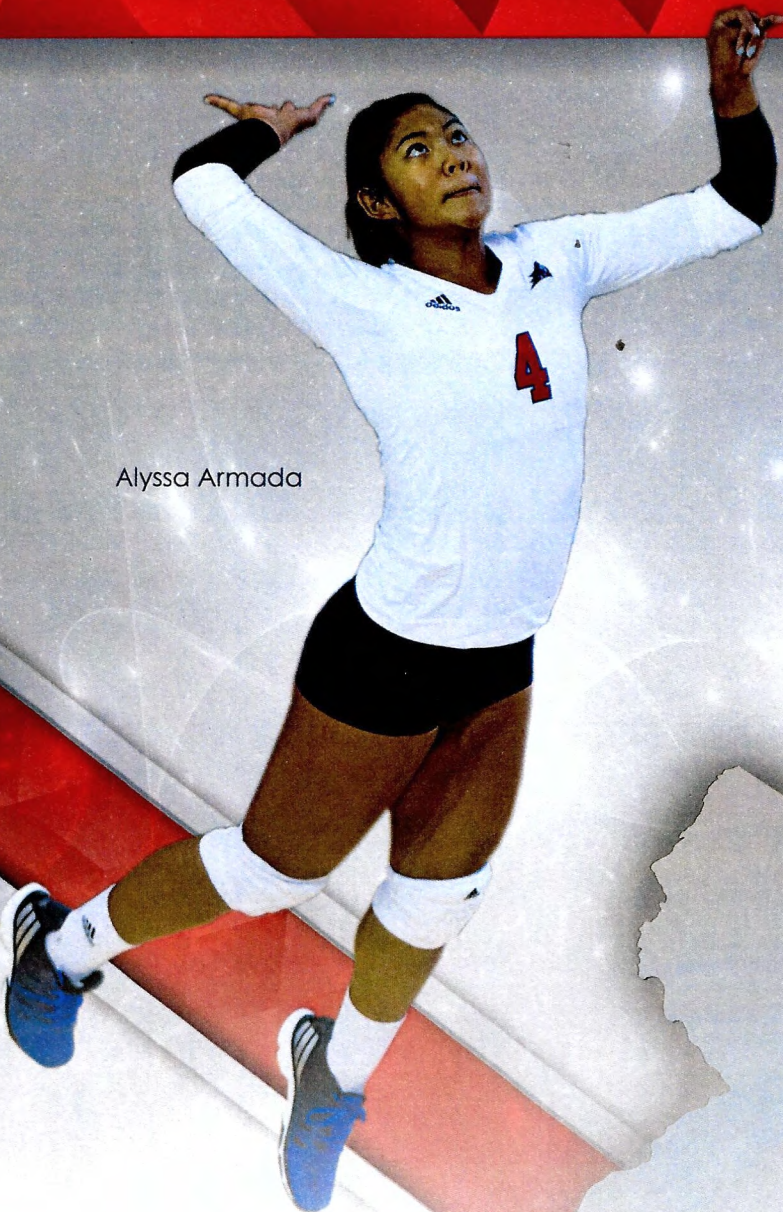
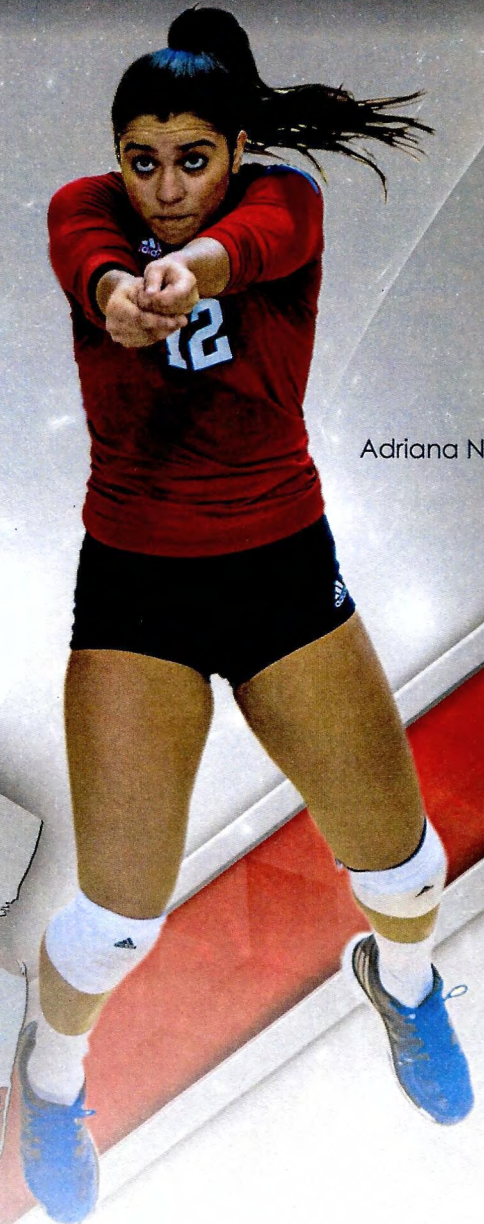


2017 VOLLEYBALL

NJIT HIGHLANDERS



Alyssa Armada



Adriana Nieto

njithighlanders.com

@NJIThighlanders



NEW HOME
FOR THE HIGHLANDERS
NJIT Wellness and Events Center

Opening November 2017

Women's Volleyball Quick Facts

Head Coach (alma mater, year): Peter Volkert (Concordia '92)
Phone/Email: 973-596-5380/volkert@njit.edu
Career Record: 378-389 (22)
Record at NJIT: 30-69 (3)
Assistant Coaches: Jackie Granger (St. John's '06; MS Stony Brook '07), Anthony Valbrun (NJIT, 1999)
Volunteer Coach: Barbara Perru
Captains: Game captains
2016 overall/ASUN (finish): 11-22
 ASUN Conference (finish): 2-12 (7th out of 8 teams)

NJIT Quick Facts

Location: University Heights, Newark, NJ
Founded: 1881
Enrollment: 11,400 (total); 7,550 (undergraduate)
NJIT website: www.njit.edu
Nickname/Colors: Highlanders/Red and White (Blue accent)
Home Field: Fleisher Athletic Center (1,500) | Wellness & Events Center (3,500)
Affiliations: NCAA Division I, ECAC
Conference: ASUN Conference
University President: Dr. Joel Bloom, EdD
Assistant Vice President/Director of Athletics: Lenny Kaplan
Senior Associate Director of Athletics: Andrew Schwartz
Associate Director of Athletics/SWA: Peg Hefferan
Athletics Department Phone: 973-596-3636

Media Information

This guide is designed to assist in coverage of NJIT women's volleyball. For home matches, the NJIT sports information office will provide an official box score following each game. Coach Peter Volkert and requested players will be available for interviews on the court following a 10-minute cooling off period. Radio broadcast requests should be made at least 10 business days prior to the contest. Requests for coach and player interviews on nongame days should be made through the NJIT sports information office (973-596-8461).

Media Relations

NJIT Athletics website: www.njithighlanders.com
Facebook, Twitter, Instagram, SnapChat & YouTube: @NJITHighlanders
Assistant SID: Stephanie Pillari, 973-596-8324/pillari@njit.edu
Assistant SID: Courtney Caden, 973-596-8485/caden@njit.edu

Why Highlanders?

The home of NJIT, University Heights, was formerly known as the Newark Highlands and NJIT's mailing address used to be High Street, until the thoroughfare was renamed in memory of Dr. Martin Luther King, Jr.

In 2006-07, NJIT athletics, in keeping with its move to NCAA Division I, unveiled a new graphic identity, which included a new Highlanders logo. Developed by CN Foundry for NJIT, the logo depicts the traditional Highlander, whose ferocity and bravery against all odds are the stuff of legend.

Table of Contents

| | |
|--|-------|
| The New NJIT Wellness and Events Center | 2-3 |
| About NJIT | 4-8 |
| NJIT in Division I | 9-10 |
| University Administration | 11-13 |
| Athletics Senior Staff | 13 |
| Athletic Administration & Coaching Staff | 14 |
| Sports Medicine | 15-17 |
| Strength & Conditioning | 17-18 |
| Academic Enrichment | 19-20 |
| Athletics Facilities | 21-23 |
| ASUN Conference | 24-26 |
| Roster | 28 |
| 2016 Statistics and Results | 29 |
| Head Coach Peter Volkert | 30-31 |
| Assistant Coaches | 32-33 |
| Records Book—Division I School Records | 34 |
| Records Book—Division I Superlatives | 35 |
| All-Time vs. Division I Opponents | 36 |
| NCAA National Statistical Leaders | 36 |
| All Time Program History | 37 |
| All-Time Conference Honors | 38 |
| Year-by-Year | 39-44 |
| All-Time Varsity Roster | 45-46 |
| Hall of Fame | 47 |
| Directions to NJIT | 48 |
| 2017 Team Photo | 49 |

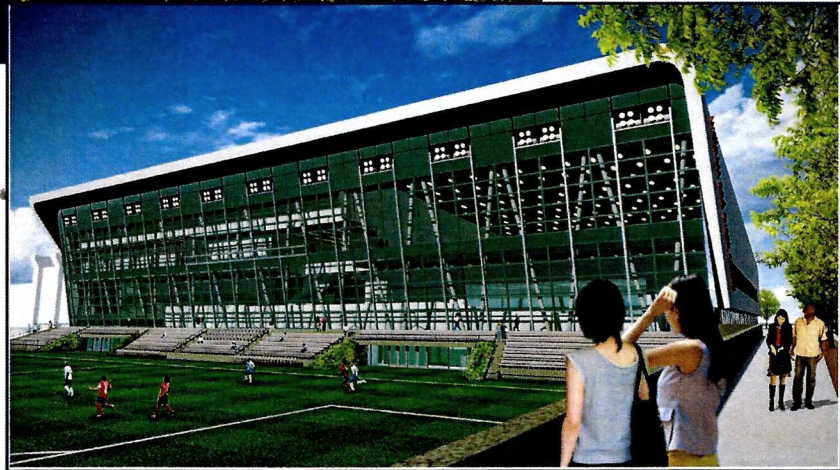
Credits

The 2017 NJIT Women's Volleyball Media Guide is a production of the NJIT Sports Information Office in cooperation with the Office of Strategic Communications. Written and edited by Stephanie Pillari. Design by Karyn Olsen. NJIT photographs and information courtesy of Office of Strategic Communications. All interior team and action photography by Mike McLaughlin Photography. Red Bull Arena photo (p. 23) courtesy of Getty Images/RBNY.



THE NJIT WELLNESS AND EVENTS CENTER

NJIT hosted a groundbreaking ceremony on Thursday, November 12, 2015 for the Wellness and Events Center (WEC), a sleek new building that has the promise to become the social centerpiece of a revamped campus.



The Wellness and Events Center (WEC) is a \$102 million building that will be constructed on the site of the current Lubetkin Field at Mal Simon Stadium athletic field. WEC will extend across the length of the field, which will later be rebuilt on the north side of the building. The construction of WEC, which began after the groundbreaking, will be finished in the fall of 2017.

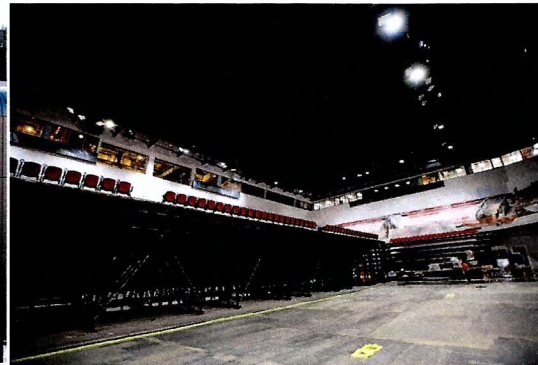
The WEC will accommodate the rapid growth of the school's athletic department, student body, and campus community. In addition to a number of conference, academic, and community facilities, the building will house a first-class basketball arena, natatorium, locker rooms, indoor track, concessions, suites, offices, and a fitness center.

The 3,500 seat basketball arena will compare favorably with many Division I mid-major facilities throughout the country, allowing NJIT to continue to grow their men's and women's basketball programs.

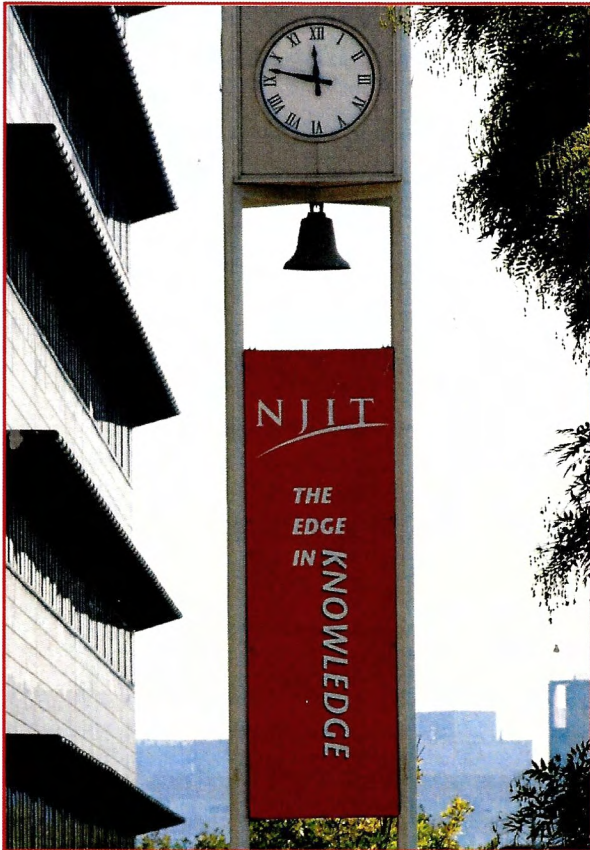


WEC will have many amenities, just some of which include: ⁴

- A 25-meter swimming pool with diving area
- A fitness center with cardio equipment and weights
- Lounges, study areas and multipurpose rooms
- An indoor 10,000 square feet turf space
- Two practice courts for intramural and intercollegiate sports
- A running track that will encircle the concourse of the first-floor arena
- The arena will seat 3,500 people, but the bleachers are designed to retract, allowing the floor space in the arena to triple in size.
- The expanded floor space will host campus events and professional conferences
- An inside path on the first floor will allow students to walk from the subway and other areas on Lock Street to the main campus quad
- A 30-foot-wide promenade between Tiernan Hall
- The outside steps and the open space on WEC's northside are designed for students to sit comfortably
- WEC will be three stories high and its north side will be all windows, through which natural light will flood into the building. The tall windows will overlook the new athletic field.



About NJIT



NJIT is New Jersey's Science & Technology University. With roots going back to 1881, when it was founded as Newark Technical School, New Jersey Institute of Technology observed its 125th anniversary in 2006.

Located in University Heights, Newark, NJ, home to more than 30,000 college students, NJIT's campus is just 10 miles from New York City.

Playing a critical role in shaping New Jersey's future, NJIT, as a major public technological university, is an important pipeline for the flow of technology into society. The university's educational programs prepare students to be leaders in the technology-dependent economy of the 21st century. University researchers seek new knowledge to improve processes and products for industry. Through public and private partnerships and economic development efforts, the university helps to grow new business ventures that fuel the economy.

In recent years, NJIT has put tens of millions of dollars toward new and improved buildings and facilities on the 48-acre campus, including biomedical engineering labs and a campus center.

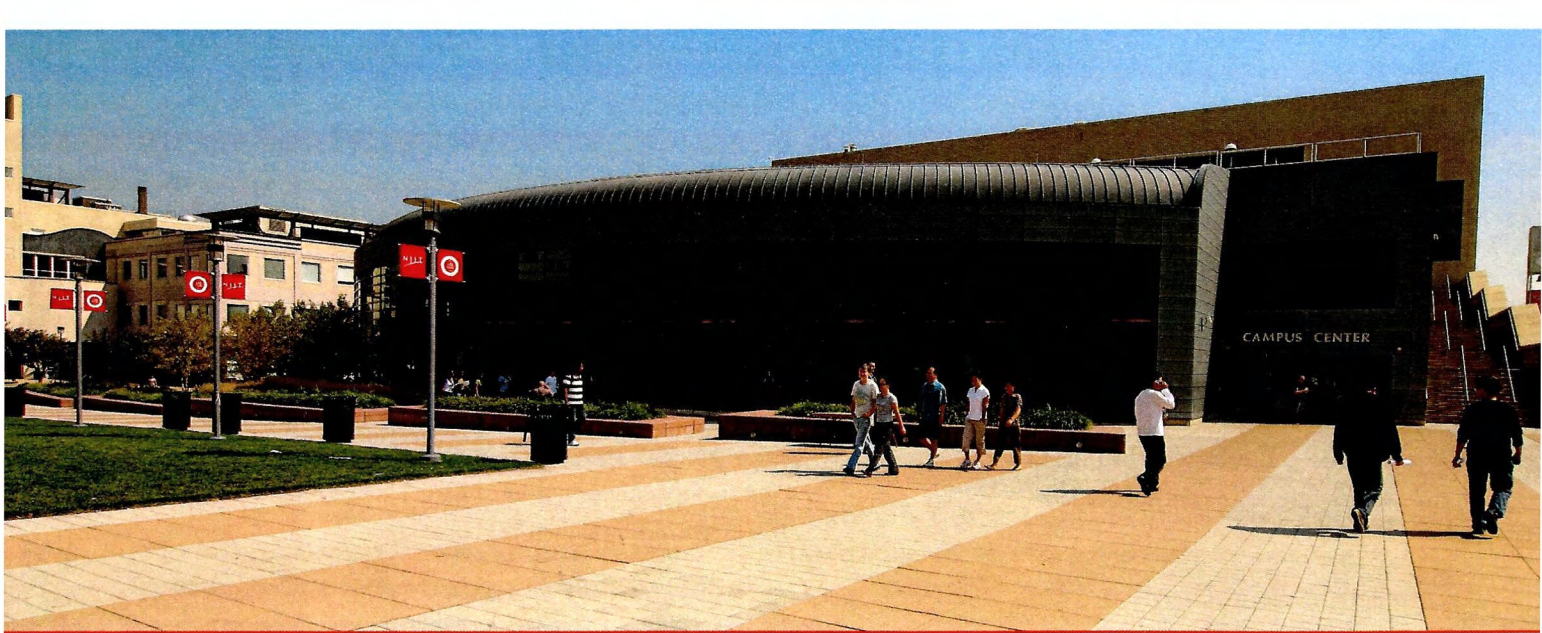
Instructional Programs

NJIT offers an ever-expanding array of educational programs, with many new programs added in the last five years and more to come. In 2014 NJIT lists 125 undergraduate and graduate degree programs through six schools:

- Newark College of Engineering
- College of Architecture and Design
- College of Science and Liberal Arts
- School of Management
- Albert Dorman Honors College
- College of Computing Sciences

NJIT has 277 tenured or tenure track faculty; 99 percent of whom hold doctoral degrees or the highest degree attainable in their field. The student-faculty ratio is 16:1, with over 7,000 undergraduate students and nearly 3,000 graduate students. Our students hail from 33 states and more than 100 countries to rank eighth in the nation for diversity.

Albert Dorman Honors College enrolls more than 500 students who take advantage of honors courses, research opportunities, advising and mentoring. Honors College students have SAT scores ranking in the top 10 percent nationally.



With nearly 50,000 alumni, NJIT is an acclaimed institution.

- BuzzFeed.com ranked NJIT as the #1 higher education value nationally when considering annual tuition cost and average starting salary of graduates.
- Top one percent for return on investment and eighth in alumni earning potential among public universities nationwide – PayScale.com
- Top 10 percent nationally for return on investment and one of four best buys in New Jersey higher education – Bloomberg Businessweek
- Third in nation among America’s Most Underrated Colleges – BusinessInsider.com
- Top National University – U.S. News and World Report
- 149th among national universities overall for its range of undergraduate majors and master’s and doctoral degree programs and commitment to groundbreaking research - U.S. News and World Report
- An “America’s Top College” – Forbes.com
- A Princeton Review Best College
- Top 200 American research universities –The Center for Measuring University Performance at Arizona State
- Top 50 among colleges without a medical school for research expenditures and top 10 among universities whose main research is in engineering – National Science Foundation
- Top 10 among technological universities in faculty scholarly productivity – Academic Analytics
- Top 100 producers of minority degrees, including fifth in the nation for bachelor’s degrees in engineering technologies to all minority students – Diverse: Issues in Higher Education

Research

NJIT's research expenditures totaled more than \$110 million in FY2014 and faculty members welcome student collaboration on research projects.

As of September 1, 2014, NJIT had 185 issued U.S. Patents and 133 pending U.S. patent applications.

Economic Development

NJIT is committed to economic development for Newark and the region. The university operates several outreach centers that provide direct technical assistance to the state's businesses with the goal of helping small and medium-sized companies. NJIT is also the home of New Jersey's oldest and largest incubator facility, and was one of the first institutions in the nation to adopt economic development as a fourth mission element, together with instruction, research and community service.

The Enterprise Development Center (EDC) at NJIT is New Jersey's largest high technology and life science business incubator, and one of the largest in the nation. EDC resident companies have attracted more than \$80 million in third-party funding since entering the incubator, and generated revenues of \$50 million last year. The approximately 90 member companies employ roughly 500 people.

The Global Edge

The diversity in NJIT's student body and faculty prepares graduates to understand and succeed in the global marketplace.

The Career Edge

- NJIT was named in the top 1 percent for return on investment and 8th in alumni earning potential among public universities nationwide by *Payscale.com*.
- Students get a head start on their careers through cooperative education, salaried internships that relate specifically to their field of study.
- The 10 fastest-growing occupations for college graduates include NJIT's newest program areas—physician assistant and physical therapy—as well as computer-related occupations.
- Among the CEOs of the S&P 500 companies, engineering is the single most common undergraduate degree (22 percent of the group). More than half of the CEOs have undergraduate degrees in engineering, business management, science, math, or computing.

The Technology Edge

NJIT has been designated one of the nation's most technologically sophisticated universities by *Forbes.com* and a *Princeton Review* survey and the university has received major funding from the National Science Foundation and the National Security Agency in recent years.

The Academic Edge

- NJIT named a Most Wired College by *Princeton Review*.
- NJIT was the first recipient of the Excellence in Technology Education Award presented by New Jersey Technology Council (NJTC), which annually recognizes outstanding technology companies and individuals who contribute to "growth, achievement, and excellence in diverse technology sectors of New Jersey."
- *Forbes.com* and a *Princeton Review* survey designated NJIT as one of the nation's most technologically sophisticated universities based on factors such as the ratio of computers to students, campus-wide and wireless networks, and technology-enhanced learning.

- NJIT has received major National Science Foundation (NSF) funding to define the next generation of computing applications. Most notable is the creation of *SmartCampus*, a wireless peer-to-peer, location-aware community system that immerses students in a world of wearable computers.
- NJIT has been designated a Center of Academic Excellence in Information Assurance (Homeland Security) Education by the **National Security Agency**.
- NJIT partners with Iowa State University in the Center for Information Protection (Homeland Security), an NSF-supported cooperative research center in information assurance.

The Regional Edge

New Jersey, with America's highest concentration of pharmaceutical, hi-tech, biotech, and medical device companies is the place to study technology. It has the nation's highest per capita number of engineers and scientists as residents, while also leading in per capita rate of patents issued. Further, the Newark-New York region is a living laboratory for architecture and building sciences, environmental engineering and transportation.

The Research Edge

NJIT has been designated by the State of New Jersey as the Homeland Security Technology Systems Center and NJIT operates the world-renowned Big Bear Solar Observatory.



About NJIT

A HISTORY OF NJIT

From the Industrial Revolution to the Information Age, New Jersey Institute of Technology has a rich history with its beginnings developing from the industrial age.

In 1881, an act of the New Jersey State Legislature, recognizing an urgent need, sought a home for what would be the state's technical school. The efforts of Newark's public and private sectors resulted with the opening of Newark Technical School, addressing the state's need.

Over time, the university expanded its curriculum and mission. In 1919, the university established baccalaureate programs in three engineering fields. By the middle of the 20th century, Newark Technical School was transformed into the robust Newark College of Engineering.

The post-war period was one of enormous activity with regular expansion of the campus, as well as the introduction of doctoral level programs. In 1975, with the addition of the New Jersey School of Architecture, the institution had evolved into a technological university, emphasizing a broad range of degrees and dedication to significant research and public service. Newark College of Engineering, stronger than ever, remained intact, but a new university name -- New Jersey Institute of Technology -- reflected the institution's expanded mission.

A broadened mission called for the creation of a residential campus and the opening of NJIT's first dormitory in 1980 began a period of steady growth that continues. Two new schools were established during the 1980s--the College of Science and Liberal Arts (1982) and the School of Industrial Management (1988). The Albert Dorman Honors College was established in 1994, and the College of Computing Sciences, was created in 2001. Beginning in 2009 the College of Architecture and Design was created to house the New Jersey School of Architecture and the new school of Art and Design.



NJIT and NCAA Division I

Beginning on September 1, 2009, the entire NJIT athletics program officially gained across-the-board active membership in NCAA Division I, completing a process that began officially in 2003.

NJIT, its teams and student-athletes enjoy the full benefits of Division I membership, including eligibility for Division I postseason championship competition and the inclusion of the Highlanders among the national Division I leaders in statistics maintained by the NCAA.



Olivia Welsch

Within months of NJIT's active Division I membership, the school won its first national Division I statistical championships, as women's volleyball player Sabrina Baby led the nation in digs per set and her teammates captured the team crown for digs, as well.

The NCAA's decision to make NJIT a full member of Division I completed a

specific timetable that required NJIT and its Department of Athletics to meet a series of annual benchmarks before proceeding to the next step in the process.

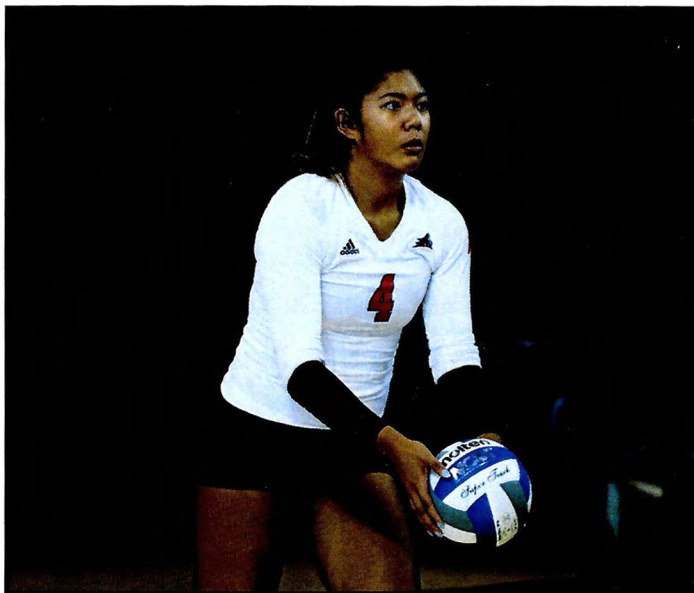
NJIT, which competed in NCAA Division II beginning in 1997-98 and in NCAA Division III for more than two decades before that, made its first formal move toward Division I reclassification with men's soccer paving the way in 2003. That move grew out of November 2002 meetings among then-President Robert A. Altenkirch, then Vice President Joel Bloom (who would later succeed Altenkirch as NJIT's President) and Director of Athletics Lenny Kaplan. From there came a proposal for Dr. Altenkirch to the Board of Trustees, which unanimously approved in February 2003 a plan to reclassify men's soccer to Division I. Little more than two years later, the NCAA approved NJIT's proposal to begin advancing its entire program to Division I.

Men's soccer achieved active Division I status in 2005 and NJIT women's soccer became postseason-eligible in 2007. The remaining programs also began reclassifying in 2005, with active status taking longer for an entire athletics program than under the single-sport-per-gender track used for the two soccer programs.

In 2005-06 the lion's share of the competition for all but the men's soccer program came at the Division II level. In 2006-07, 2007-08, and 2008-09, NJIT's teams competed at the Division I level and fully complied with NCAA Division I rules, but were not eligible for championships at the top level.

Every facet of the program has been enhanced in the move to Division I with a special emphasis placed on student-athlete welfare. Facility upgrades have gone along with support staff expansion. NJIT has built a model NCAA Division I rules compliance regimen within its athletics program and across the entire university.

NJIT and NCAA Division I



Alyssa Armada

Further, the Board of Trustees embraced the transition to Division I as part of the University's strategic plan to enhance the quality of campus life for all students.

NJIT's teams compete throughout the United States, taking on opponents from schools that are instantly recognizable for their stature in academics and athletics.

NJIT student-athletes have faced opponents every Ivy League institution, as well as the Patriot League, including Army and Navy, Buckell, Lafayette, and Lehigh.

The Highlanders have also competed against teams from every Division I conference with teams either in the Northeast or Mid-Atlantic States, including the America East, American Athletic, Atlantic 10, Big East, Colonial Athletic Association, Metro Atlantic Athletic, Mid-Eastern Athletic, and Northeast.

The eighth New Jersey-based institution in Division I, NJIT has competed against all seven of its home state peers, including Rutgers and Seton Hall.

In addition, Highlander teams have taken on squads from power conferences such as the ACC, Big Ten, Big 12, and Pac-12.

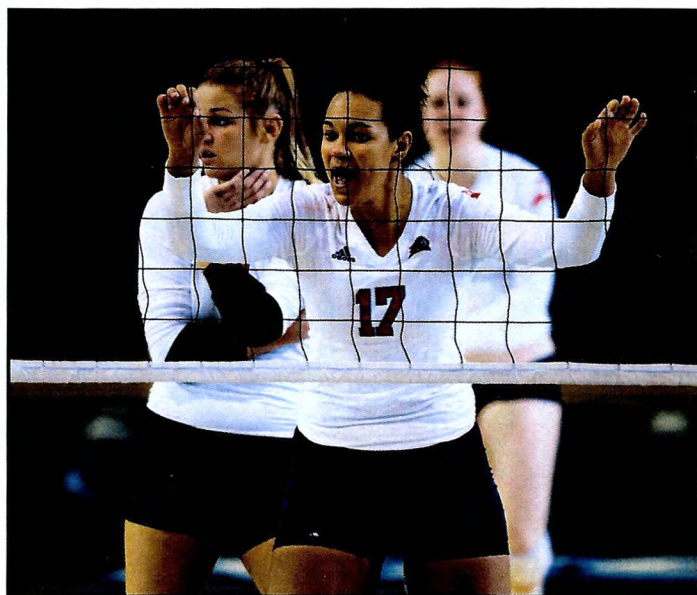
NJIT joined its first Division I conference in 2009-10 when the Great West became an all-sports conference and women's tennis captured back-to-back league titles in 2011 and 2012. In 2012-13, the final year of the GWC, NJIT men's basketball was regular season champion and NJIT women's basketball was GWC Tournament champion.

Moving on from the Great West, NJIT women's tennis joined the America East Conference in 2013-14 and finished as conference runner-up in 2014, the Highlanders' first try at the AEC title. NJIT men's soccer began play as a member of the Sun Belt Conference in

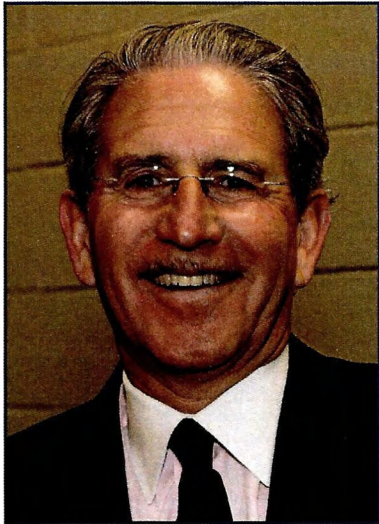
2014. Also in 2013-14, NJIT men's swimming became one of three new members in the Coastal Collegiate Swimming Association (CCSA).

In June 2015, NJIT and the Atlantic Sun Conference announced that the Highlanders would become the newest full member of the ASUN. Founded in 1978 as the Trans America Athletic Conference, the conference took on its present name following the 2001 season.

The ASUN Conference will be the home of 13 of NJIT's varsity teams in 2015-16, with men's soccer moving over from the Sun Belt in 2016-17, bringing the total of ASUN teams from NJIT to 14.



Mikalay Hughes



DR. JOEL BLOOM

President, New Jersey Institute of Technology

Appointed President of New Jersey Institute of Technology on January 12, 2012 by unanimous vote of NJIT's Board of Trustees, Joel S. Bloom started his career in industry working as an economist.

He subsequently became an educator and administrator for the New York City public schools. Prior to coming to New Jersey, he worked as a research director and instructor at Teachers College, Columbia University.

In New Jersey, he managed state and federally-funded curriculum development and training centers for the state. From 1983 through 1990, Dr. Bloom served as assistant commissioner in the NJ Department of Education for the Division of General Academic Education. He was responsible for managing many of the education department's initiatives including competency testing, curriculum content standards, pre-school programs,

establishment of 17 model effective schools, over 300 grants and contracts, and a \$24 million budget.

Immediately prior to his appointment as President, he served as Interim President from September 2011 until January 2012. Prior to that, he was NJIT's Vice President for Academic and Student Services, as well as founding dean of the Albert Dorman Honors College.

Indeed, since joining NJIT in July 1990, Dr. Bloom has served the university in many capacities.

Promoted in 1996 to Vice President for Academic and Student Services, he was responsible for nine divisions of the university, including pre-college programs, enrollment management, continuing professional education, career development services, dean of student services, freshman studies, educational opportunity programs, library services, physical education and athletics.

Dr. Bloom was appointed as the first dean of the Albert Dorman Honors College in 1998, in addition to his vice president responsibilities. The Honors College enrolls over 650 students who come from 15 states and several foreign countries. The average SAT score is over 1340 and the majority of the incoming freshman class members graduated in the top 15 percent of their high school class. More than 50 percent of the

Honors College students maintain a grade-point average higher than 3.5.

Dr. Bloom is chair of the Science Park Board, treasurer of the NJ President's Council, and treasurer of the NJEDge. Net Board. In addition, he serves as a member of the following boards: the Board for Communities and Schools, Newark Alliance, Philadelphia Alliance for Minority Participation, La Casa de Don Pedro, and the Association of Public and Land-grant Universities Presidents Council. Dr. Bloom has been the recipient of national and state education awards, as well as federal, foundation and corporate grant awards. He has published journal articles and presented papers on school improvement, curriculum development, college transition and student assessment.

Dr. Bloom holds a master's degree and a doctorate from Teachers College, Columbia University. He also earned master's and bachelor's degrees from Hunter College of the City University, New York City.



LENNY KAPLAN

Assistant Vice President/Director of Athletics

Since taking over as head of New Jersey Institute of Technology's division of physical education and athletics in August 2000, Kaplan has been instrumental in guiding the program's growth, first at the NCAA Division II level and, since late 2002, in its successful reclassification to NCAA Division I.

Kaplan's tenure at NJIT has seen growth in the institution and in its athletics program on multiple fronts.

NJIT announced plans in 2015 to build a new Wellness and Events Center, a \$102 million on-campus facility with an opening targeted for Fall 2017.

On July 1, 2015, NJIT accepted an opportunity to become the eighth full member of the multisport ASUN Conference for 14 Highlander teams. The ASUN was the first multi-sport postseason-qualifying home at the Division I level for NJIT.

However, NJIT is a long-time member of the EIVA, which is one of four automatic qualifying conferences in the sport of men's volleyball in Division I-II. Kaplan, has been appointed a four-year term on the NCAA Division I Men's Volleyball Committee in 2016, will serve on a committee that is charged with oversight of the NCAA Volleyball Championship, including, but not limited to team selection, seeding, officials, offering guidance to the host institution as necessary, areas of sport growth and rules changes.

In September 2015, Lenny Kaplan was lauded at the annual Eastern College Athletic Conference (ECAC) Honors Luncheon as one of two named Administrator of the Year in Division I.

He has been a member of the Division I-AAA

Athletics Directors Association (DI-AAA ADA) Executive Committee since 2012-13. The Division I-AAA Athletics Directors Association's mission is to enhance initiatives common to its Division I-AAA membership (the Division I institutions that do not sponsor football).

Going back to his arrival at NJIT, Kaplan helped stabilize and expand a program that was entering its fourth year in Division II. In late 2002, after discussions with then-university President Dr. Robert A. Altenkirch and Vice President (now President) Dr. Joel Bloom, Kaplan took on the task of steering NJIT's programs into Division I, an arduous process that reached fruition with the NCAA's granting active Division I status, with full championship eligibility effective September 1, 2009.

Throughout Kaplan's tenure, NJIT has enhanced the athletics program, particularly in areas that benefit the student-athletes directly. Today, NJIT's sports offerings have expanded to the current 19 varsity programs.

Since 2004, NJIT has renovated its two main on-campus venues—Lubetkin Field at Mal Simon Stadium at Lubetkin Field and the Estelle and Zoom Fleisher Athletic Center prior to launching the development of the new Wellness and Events Center.

Under Kaplan's leadership, NJIT in 2011 brought on line the Naimoli Family Recreation Center to enhance recreational and intercollegiate opportunities on campus. The Naimoli Center is the home of both NJIT tennis teams.

NJIT athletics has also forged a presence in downtown Newark, playing all home baseball in the professional Bears and Eagles Riverfront Stadium and also hosting select basketball home games in the Prudential Center, home of the NHL's New Jersey Devils. The NJIT club hockey team also plays all of its home contests in the Barnabas Health Hockey House, which is part of the Prudential Center complex.

Under Kaplan's leadership, many teams achieved regional and national Division II ranking. Success for several women's teams was unprecedented, with basketball, tennis and soccer all reaching postseason play for the first time in his administration.

Additionally, men's volleyball captured a 2007 divisional championship in the Eastern

Intercollegiate Volleyball Association and the next year reached the EIVA playoff semifinals hosted by eventual 2008 national champion Penn State.

Kaplan guided the Highlanders toward further stability with membership in the newly-expanded all-sports Great West Conference, which offers a conference home for 11 of NJIT's varsity sports.

In 2009-10, NJIT's first year as a full active member of Division I, the women's volleyball team and senior Sabrina Baby became the school's first national statistical champions at the Division I level, as team and individual leaders, respectively, digs per set. Baby was honored as the school's first CoSIDA Academic All-America in the Division I era, earning third-team national honors.

Christian Baumbach, a sophomore at the time, made history in 2009 as NJIT's first individual conference champion at the Division I level, when he won the Great West Conference men's cross country race. He also won the prestigious IC4A University Division race in the 101st annual running of that contest.

In 2010-11, the Highlanders earned their first-ever Division I conference team championship when women's tennis captured the Great West title in May.

In 2012, following a run to the championship game of the Great West Conference tournament, senior captain Isaiah Wilkerson received honorable mention on the Associated Press Division I All-America team, becoming the first NJIT student-athlete to earn honors from the AP in the Division I era.

By practically any measure, the 2012-13 year was the most successful for NJIT athletics since the program made the move to NCAA Division I competition, beginning in 2004 with men's soccer.

Both NJIT basketball teams captured Great West Conference championships—a first for those sports at the Division I level. In fact, the women's team, which won the 2013 Great West Tournament, had never won a conference tournament title at any level since beginning play in 1986-87, and the men, who won multiple championships in Division III, had not finished first in a conference since 2002-03 at the Division II level.

NJIT men's basketball reached the CollegeInsider.com semifinals in back-to-back seasons (2014-15; 2015-16), including two 20-win seasons in a row under then-head coach Jim Engles. The Highlanders, who competed in their first season as a member of the ASUN Conference (2015-16), finished tied for second place and played in a school-record 35 games.

On an individual level, all-American Damon Lynn became NJIT's all-time leading scorer (at all levels) with 2,153 points, following the 2016-17 season. He is the D-I active career leader in three-pointers made at 434 -- which ranks fifth in NCAA history.

Men's volleyball Jabarry Goodridge, concluded his four-year career at NJIT in 2017, earning his second American Volleyball Coaches Association (AVCA) All-America recognition and became the Highlanders' first Division I-II honorable mention as a junior (2016). Goodridge also became the first Highlander student-athlete to receive NCAA Postgraduate Scholarship prestigious award.

NJIT's women's basketball Alana Dudley was selected 2017 ASUN Conference Woman of the Year and nominated as NCAA Woman of the Year.

Men's Outdoor Track and Field's Erick McNamara became NJIT's first men's outdoor individual ASUN Conference champion, capturing the javelin title in 2017.

Impressive news came in June after the conclusion of 2012-13 competition, in less than a week, senior pitcher Mark Leiter, Jr. was selected in the 22nd round of the annual Major League Baseball First-Year Player Draft by the Philadelphia Phillies and classmate and fellow pitcher Tripp Davis signed a free agent contract to play in the Kansas City Royals organization.

Leiter was called up to the Philadelphia Phillies from the Phillies Class AAA team, the Lehigh Valley (PA) Iron Pigs and made his major league debut against the Dodgers on April 29, 2017, pitching a 1-2-3 seventh inning.

Men's basketball star Chris Flores, also a 2013 graduate, was one of six prospects brought in by the Brooklyn Nets on June 12 for a closed

workout in preparation for the 2013 NBA Draft. Joining Flores among the six prospects in his workout were players from such perennial college basketball powers as Kentucky, North Carolina, and Pitt.

Men's soccer made the biggest mark among the fall teams, notching 10 wins to double the previous Division I high for a program that brought NJIT (then NCE) its only national championship with an NAIA national title in an undefeated 1960 season.

The NJIT men's tennis team had their best Division I season, posting a 16-6 record. The leader was freshman Markus Schultz, who hails from Hagersten, Sweden. Named Newcomer of the Year for the overall NJIT athletics program, Schultz was 20-1 in singles and finished the year ranked 18th in the NCAA Division I Northeast Region by the authoritative ITA. He is the first NJIT tennis player to earn ITA regional ranking at the Division I level (women's players Julia Doci in 2005 and the late Fatima Kasem in 2004-05 were regionally ranked by the ITA in Division II).

In outdoor track and field, junior Kelsey Jackson became NJIT's first woman individual Great West Conference champion when she captured the high jump title. The NJIT men won their first-ever team championship in the Collegiate Track Conference, competing as one of 17 teams that included teams from all three NCAA divisions.

NJIT's growing success in Division I competition has been accompanied by a continued commitment to excellence in the university's rigorous academic environment. The combined grade point average of Highlander student-athletes has been above 3.0 for 13 straight semesters through Fall 2016.

Before coming to NJIT, Lenny Kaplan 11 years at Manhattan College, where he began as Manhattan's director of operations and was assistant athletics director from 1991-2000.

Kaplan, a 1988 graduate of St. John's University with a degree in athletics administration, resides in Merrick, NY, with his wife, Nancy. They are the parents of two sons, Michael, a student at Lafayette College, and Joshua, who is in high school.

Athletics Senior Staff



Andrew Schwartz

Senior Associate Athletic Director
(973) 642-7224 aschwartz@njit.edu



Peg Hefferan

Associate Director of Athletics for Administration and Student-Athlete Services/ Senior Woman Administrator
973-596-3181 Hefferan@njit.edu



Jayson Smikle

Assistant Athletic Director
for Compliance
(973) 596-5278 jsmikle@njit.edu



Sean Morrison

Assistant Director of
Development for Athletics
(973) 596-8489 sean.p.morrison@njit.edu

Athletics

SENIOR ADMINISTRATION

| | |
|---------------------|--|
| Lenny Kaplan | Assistant Vice President/Director of Athletics |
| Andrew Schwartz | Senior Associate Athletic Director |
| Peg Hefferan | Associate Director of Athletics for Administration & Student-Athlete Services/ Senior Woman Administrator |
| Jayson Smikle | Assistant Athletic Director for Compliance |
| Brian Callahan | Assistant Director of Physical Education |
| Michael Siegel, PhD | Faculty Athletic Representative |
| Kerry Feder | Administrative Assistant for the Director of Athletics |

ACADEMIC SUPPORT

| | |
|-----------------|--|
| Sandra Taylor | Director of The Learning Center; |
| Mike Spisto | Eligibility Certification Officer/ Academic Advisor Athletics |
| Brittany Allard | Academic Advisor for Student-Athletes |

ATHLETIC TRAINING

| | |
|-----------------|----------------------------|
| Matt Koscs | Head Athletic Trainer |
| Paul Grayner | Assistant Athletic Trainer |
| Melissa Mackey | Assistant Athletic Trainer |
| Kyle Tuohy | Assistant Athletic Trainer |
| Catie Rose | Assistant Athletic Trainer |
| Dr. Louis Rizio | Team Physician |

COMPLIANCE

| | |
|---------------|---|
| Jayson Smikle | Assistant Athletic Director for Compliance |
|---------------|---|

DEVELOPMENT

| | |
|---------------|--|
| Sean Morrison | Assistant Director of Development for Athletics |
|---------------|--|

FLEISHER ATHLETIC CENTER / WARREN STREET FITNESS CENTER

| | |
|-----------------|---|
| Casey MacDonald | Facilities Manager |
| Joe Vacca | Athletics Business Coordinator/ Ticket Manager |
| Jonathan Walker | Warren Street Fitness Center Front Desk |

SPORTS INFORMATION

| | |
|-------------------|---------------------------------------|
| Stephanie Pillari | Assistant Sports Information Director |
| Courtney Caden | Assistant Sports Information Director |
| Matt Provence | Men's Basketball Contact |

STRENGTH AND CONDITIONING

| | |
|------------|---|
| Bobby Fisk | Head Strength and Conditioning Coach |
| Drew Culp | Assistant Strength and Conditioning Coach |

COACHING STAFF DIRECTORY

BASEBALL

| | |
|------------------|-----------------|
| Brian Guilliana | Head Coach |
| Robbie McClellan | Assistant Coach |
| Grant Neary | Assistant Coach |
| Jared Fabian | Volunteer Coach |

MEN'S BASKETBALL

| | |
|----------------|-----------------------------------|
| Brian Kennedy | Head Coach |
| Jeff Rafferty | Assistant Coach |
| Kevin Driscoll | Assistant Coach |
| Kim Waiters | Assistant Coach |
| Andrew McGlynn | Director of Basketball Operations |

WOMEN'S BASKETBALL

| | |
|----------------|-----------------|
| Steve Lanpher | Head Coach |
| Bob Dubina | Assistant Coach |
| Liz Flocks | Assistant Coach |
| Rayven Johnson | Assistant Coach |

MEN'S & WOMEN'S CROSS COUNTRY

| | |
|---------------|-----------------|
| Al Alonso | Head Coach |
| John Crawford | Assistant Coach |

MEN'S AND WOMEN'S FENCING

| | |
|--------------------|-----------------|
| Yefim Litvan | Head Coach |
| Jason Henderson | Assistant Coach |
| Danielle Henderson | Assistant Coach |
| Ben Igoe | Assistant Coach |

MEN'S LACROSSE

| | |
|----------------|-----------------|
| Travis Johnson | Head Coach |
| Brad Conlon | Assistant Coach |
| Alex Lopes | Assistant Coach |
| Tyler Russell | Volunteer Coach |

MEN'S SOCCER

| | |
|------------------|------------------|
| Fernando Barboto | Head Coach |
| Matthew Uly | Assistant Coach |
| Augi Freitas | Assistant Coach |
| Mark Williams | Goalkeeper Coach |

WOMEN'S SOCCER

| | |
|--------------|--|
| Ally Nick | Head Coach |
| Mary Hearin | Assistant Coach |
| Chris Duggan | Assistant Coach |
| Joe Nick | Director of Operations/Volunteer Coach |

MEN'S SWIMMING & DIVING

| | |
|-----------------|-----------------|
| Michael Lawson | Head Coach |
| Shawn Bryan | Assistant Coach |
| Anthony Cacella | Diving Coach |

MEN'S AND WOMEN'S TENNIS

| | |
|-------------------|--------------------------|
| Ira Miller | Head Coach |
| Abdelrahman Zaki | Assistant Coach |
| Teona Tsertsvadze | Graduate Assistant Coach |

MEN'S AND WOMEN'S TRACK AND FIELD (INDOOR & OUTDOOR)

| | |
|-----------------|--------------------------|
| Al Alonso | Head Coach |
| John Crawford | Assistant Coach |
| James Luginland | Assistant Coach (Throws) |

MEN'S VOLLEYBALL

| | |
|-----------------|--------------------------|
| Danny Goncalves | Head Coach |
| Brennon Dyer | Assistant Coach |
| Zak Robben | Graduate Assistant Coach |

WOMEN'S VOLLEYBALL

| | |
|-----------------|-----------------|
| Pete Volkert | Head Coach |
| Simone Asque | Assistant Coach |
| Anthony Valbrun | Assistant Coach |

SPORTS MEDICINE

NJIT sports medicine is moving forward with the growth of the Highlanders program. Head trainer Matt Koscs, MS/ATC, oversees the program, ably assisted by assistant trainers Paul Grayner, MEd/ATC; Melissa Maskery, MS, ATC; Brittany Vondran, MS/ATC; and, Kyle Tuohy, BS/ATC.



Matt Koscs, ATC, Head Athletic Trainer

Matt Koscs, who earned both his bachelor's and master's degrees from University of Delaware, has served NJIT as

head trainer since July 2009, a year after he joined the staff as an assistant trainer.

As an undergraduate at Delaware, he was recipient of the Paris Delligatti Memorial Award for Excellence in Athletic Training. He earned his MS in Exercise

Science from Delaware in 2008.

Prior to his arrival at NJIT, Matt served three years as the head athletic trainer at Hodgson Vocational Technical High School in Newark, DE, from 2005 to 2008.

In addition to his work at the high school level, he was head athletic trainer for the Delaware Dynasty semi-pro soccer team in Wilmington, as well as with the Kirkwood Soccer Club in New Castle in 2005 and 2006.

He was employed from 2005 to 2008 at

Christiana Care Physical Therapy Plus, in Newark, DE, where he was an athletic trainer and was the Director of Athletic Training Services in a clinical setting.

He is a NATABOC certified athletic trainer, as well as holding additional certifications as a professional rescuer and in first aid.

He resides in Metuchen, NJ with his wife Kristin and daughters Eloise, Claire, and Madeleine.



Paul Grayner, ATC, Assistant Athletic Trainer

Paul Grayner, who joined the NJIT staff as an assistant athletic trainer late in the 2008 calendar year, has a diverse background

in athletic training, having served at the college and professional levels, as well as in a fitness center setting.

A graduate of Saint Leo College in Florida and holder of a master's degree from American University in Washington, DC, Grayner has served as both a head and assistant trainer in the past.

From the mid-1970s to the mid-1980s, he was a trainer in the minor league systems of the New York Yankees and New York Mets from 1977 to 1985 and in 1984 he was assistant trainer with the Mets. He later worked with the Long Island Knights professional basketball team.

At the collegiate level, he was head trainer at Division I Fairleigh Dickinson University in Teaneck, NJ from 1989 to 1998 and he earlier worked as an assistant trainer at Hofstra (1982-85) and Adelphi (1985) on Long Island before joining FDU as an assistant (1986-89).

In addition to his work in athletic training, Grayner is a financial services representative and a life insurance sales representative.

He resides in Dumont, NJ.



Melissa Mackey, ATC, Assistant Athletic Trainer

Melissa Maskey, who joined the NJIT staff as an assistant athletic trainer in the summer of 2013, earned her bachelor's degree,

majoring in athletic training and minoring in strength and conditioning, from the University of Delaware in 2011.

She earned her master's in athletic training at Temple University in May 2013.

As a graduate assistant, she worked in Philadelphia with several Division I teams at Drexel University and as an undergraduate, on the medical staff for Delaware's 2010 Division I Football Championship Series (formerly known as Division I-AA) national runner-up.

She has worked as a trainer at numerous summer camps and before coming to NJIT, she earned the 2013 Merit Award for Research in the College of Health Sciences & Social Work and was the recipient of Drexel University Dragon Award for Leadership.

She is married to Mark Mackey



Kyle Tuohy, ATC, Assistant Athletic Trainer

Kyle Tuohy, a 2014 summa cum laude graduate of East Stroudsburg (PA) University, joined the

NJIT athletic training staff in September 2014.

Tuohy, who will attend graduate school while working at NJIT, won multiple awards from his alma mater, including the David Caryl Athletic Training Outstanding Student Award in May 2014.

He had varied clinical internship experience starting in the Fall Semester 2012 and continuing through his senior year.

His internships included stints with the East Stroudsburg women's basketball team; Parkland High School

and Pen Argyl High School, both in Pennsylvania; the Tennessee Smokies professional baseball team, Class AA minor league affiliate of the Chicago Cubs; and Lafayette College in Easton, PA, where he worked closely with the Leopards football team in season and also worked with athletes from all in-season sports in the Fall Semester.

He holds several profession-related certifications, including from the National Athletic Trainers Association.



Catie Rose, ATC, Assistant Athletic Trainer

Catie Rose, who joined the NJIT staff as an assistant athletic trainer in the summer of 2016, earned her bachelor's degree,

majoring in Athletic Training and Exercise Science from Sacred Heart.

She earned her master's of science in Kinesiology and Rehabilitation Science at University of Hawaii in August 2013.

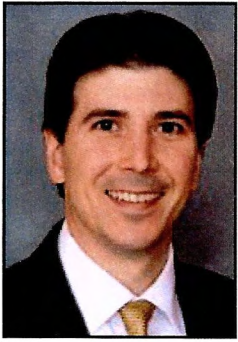
Prior to her arrival at NJIT, she worked as the athletic trainer at Kalaheo High School in Kailua, Hawaii, providing treatment, rehabilitation and reconditioning of athletes injuries, in addition to offseason strength and conditioning workouts.

She has worked for the United State Tennis Association in Hawaii Pacific, Honolulu, Hawaii, Pac5 Athletics in Honolulu, Hawaii

and for the WNBA Connecticut Sun in Uncasville, Connecticut.

As a student assistant at Sacred Heart University, she provided treatment for NCAA Division I football, men's basketball and men's lacrosse teams.

She holds several profession-related certifications, including from the National Athletic Trainers Association.



Louis Rizio, MD, Team Physician

Dr. Rizio is a board certified orthopedic surgeon and is fellowship trained in the field of sports medicine. He is a graduate

of Rutgers and after earning his medical degree from the UMDNJ/New Jersey Medical School (recently reorganized and renamed Rutgers Biomedical and Health Sciences), Dr. Rizio completed his orthopaedic residency at Tufts University in Boston.

He then completed a sports medicine fellowship at the University of Miami. During his fellowship, he was assistant team physician of the Miami Dolphins, University of Miami Hurricanes, and the Florida Marlins.

Dr. Rizio, who specializes in sports-related injuries, practices at the Sports Medicine and Orthopaedic Center in Livingston,

NJ. Prior to starting his own practice, Dr Rizio was the Chief of Sports Medicine at the NJ Medical School from 2000-2005. He currently is a professional, college, and high school team physician.

In 2013, Dr. Rizio was honored by the magazine New Jersey Monthly on its "Jersey Choice Top Doctors" list.

of Rutgers and after earning his medical degree from the UMDNJ/New Jersey Medical School (recently reorganized and renamed Rutgers Biomedical and

STRENGTH AND CONDITIONING

There are many ways to make a team better and a vital path to improvement comes with the mantra "bigger, stronger, faster".

It's how teams get better from within by maximizing individual and team performance in competition. The Strength and Conditioning staff also works closely with the Athletic Training Staff in the areas of injury prevention and rehabilitation.

In the summer and fall of 2014, NJIT's Strength and Conditioning took new direction with the appointment of Bobby Fisk as Head Strength and Conditioning Coach and Drew Culp as Fisk's Assistant Coach.



Bobby Fisk, Head Strength & Conditioning Coach

Bobby Fisk, who was a basketball player in his own college days and coached the sport after college,

competes in the Big East Conference.

Fisk, a native of Schenectady, NY, spent over two years at Hobart and William Smith Colleges in Geneva, NY, where, as head strength and conditioning coach, he worked with successful teams, including women's soccer (William Smith College), which won the 2013 NCAA Division III National Championship; football (Hobart), which advanced to the 2012 Division III national quarterfinals and the regional

finals in 2011 and 2013; and basketball, where Hobart reached the second round of the 2012 NCAA Tournament.

Moving to the Division I level with Xavier in 2013-14, Fisk worked with all 16 of the school's teams, with a primary assignment to women's basketball, men's and women's soccer, baseball, and men's and women's tennis.

He is a graduate of the State University of New York College at Oneonta (BS, Business Economics, 2008), Averett

comes to NJIT from Xavier University in Cincinnati, where he was assistant coach of strength and conditioning for the entire Musketeers' program, which

University of Danville, VA (MBA, 2010), and California University of Pennsylvania (MS in Exercise Science, Performance Enhancement & Injury Prevention, 2013).

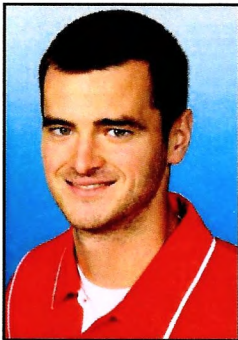
As a student-athlete, Fisk was a men's basketball player at NCAA Division I UMBC in Baltimore for three years before transferring to Oneonta, where he was on the team for two years, serving as captain as a senior and earning All-State University of New York Athletic Conference honorable mention.

As a senior for Oneonta's Red Dragons, he finished 16th in the nation in Division III in 3-point shooting percentage (.441) and 22nd in 3-pointers made per game (3.2) as a senior at Oneonta.

After graduation from Oneonta, he entered coaching while pursuing his master's degree at Averett, serving that program as assistant men's basketball coach (two years) and head strength and conditioning coach (one year).

Having received his master's degree from Averett in December 2010, he returned home to the Schenectady area and worked April 2011 to July 2011 as assistant strength and conditioning coach at nearby Siena College and with the minor professional basketball Albany Legends (head strength and conditioning coach).

Fisk holds multiple certifications and professional memberships.



Drew Culp, Assistant Strength & Conditioning

Drew Culp was named assistant strength and conditioning coach in September 2014.

Culp, who earned his bachelor's degree from Penn State University in 2010 and his master's degree from Penn State in 2012, most recently served as a volunteer assistant strength and conditioning coach at nearby Seton Hall prior to accepting his position with NJIT.

At Seton Hall, Culp worked with the school's Big East Conference men's and women's basketball teams, as well as with the men's soccer team.

Between college and coming to New Jersey, Culp worked at Velocity Sports Performance in Irvine, CA. He was a Sports Performance Coach and Assistant Sports Performance Director. Specifically, he was the Head Strength and Conditioning Coach for the El Toro High School football team and also assisted in training National Football League combine athletes. He also offered private training to athletes in a range of sports and age levels.

Drew Culp was a graduate assistant strength and conditioning coach at Penn State, working with the Nittany Lions football team for over a year through preseason 2012 and working with 11 Olympic Sports teams in his final semester.

He holds multiple certifications, including both strength and conditioning and first aid and CPR.



ACADEMIC ENRICHMENT

Sandra Taylor, Director of The Learning Center

Sandra Taylor was appointed as Director of The Learning Center in late September 2014 after

serving as Interim Director for the previous 16 months.

She joined NJIT in January 2010 as Academic Advisor for Student-Athletes working in NJIT's Center for Academic and Personal Enrichment (CAPE), which has since been renamed as The Learning Center.

She mentored student-athletes in the areas of academic support, personal development, leadership, and community service. She was instrumental in bringing the Chi Alpha Sigma Honor Society for student-athletes to campus and has been individually certified from the N4A (National Association of Academic Advisors for Athletics) as an academic advisor for student-athletes.

In May 2013, she was elevated to Interim Director of CAPE and presided over its transition to the Learning Center in August of 2014. The Learning Center provides academic support to all students, mentoring and workshops, tutoring in areas outside of math and writing, and testing accommodations

for students with disabilities. She has served on NJIT's Strategic Planning, Academic Advising, Retention and Persistence, Customer Service, Student Satisfaction, and Athletic Oversight Committees.

Prior to joining NJIT, Taylor spent 17 years as a key member of the Manhattan College Department of Athletics. She earned both her bachelor's degree in secondary education and her master's degree in special education from Manhattan College and is working on her doctorate in educational leadership at St. Mary's University in Winona, MN.

Working in the athletics department at Manhattan, a founding member of the Metro Atlantic Athletic Conference, Taylor was Associate Director of Athletics and Senior Woman Administrator, having filled those posts from 1996 until joining NJIT in 2010,

For much of her time on the Manhattan staff (1995 to 2003), she was Chief Athletic Department Compliance Officer, with responsibility for Manhattan's adherence to NCAA Division I, MAAC and college regulations. She began her service at Manhattan as Athletic Department Ticket Manager, serving in that capacity from 1993 to 2003.

In her time at Manhattan, she served on numerous NCAA, conference and internal college committees, including service on the NCAA Division I Management Council from 2004 to 2007 and as chair of the NCAA Women's Lacrosse Committee from 2002 to 2006.

At the conference level, she chaired the MAAC Women's Basketball Committee from 1997 to 2009 and also served on four other sport committees, as well as on the MAAC Committee on Athletic Administration, with service as vice-chair in 2008-09.

Internally at Manhattan, her assignments included service on the Middle States Review in 2000 and on the NCAA Certification Committee.

Sandra and her husband, Ken, who is Associate Athletics Director/Development and Marketing at Monmouth University after many years as Associate Commissioner at the MAAC, reside in Monroe Township, NJ, with their daughters, Katherine and Samantha.



Mike Spisto, Eligibility Certification Officer/Academic Advisor for Athletics

Mike Spisto moved to administration as NJIT's Eligibility Certification Office/Academic

Adviser for Athletics in the Spring of 2013, working in the Center for Academic and Personal Enrichment (CAPE), now named The Learning Center.

For the previous five years, he was the top assistant coach on the men's basketball staff, working with head coach Jim Engles in an association that culminated with the Highlanders capturing the 2013 regular season championship of the Great West Conference.

In addition to 14 years college coaching—five at NJIT—he served as Director of Athletics at the State University of New York at Delhi in

the two years before he joined Engles' coaching staff with the Highlanders.

He had two stints as head coach at SUNY at Delhi sandwiched around three years as a Division I assistant with Rider and Albany (NY). He began his coaching career with two years an assistant at his alma mater, Division III SUNY Oneonta.

At Delhi, which is also an alma mater, he was head coach from 1999 to 2001, left to become a Division I assistant and then returned for another two-year stint as head coach from 2004 to 2006 before becoming AD at Delhi.

His head coaching record in four years at SUNY Delhi was 86-31 and both stints included championships and coaching awards. His first Division I coaching assignment came at Rider University in 2001-02, where he worked alongside Jim Engles as an assistant when Rider captured its first-ever Metro Atlantic Athletic Conference regular season championship.

Heading to the University at Albany (NY), he helped recruit the team that would win back-to-back America East Conference championships.

Spisto's coaching career began at Oneonta State following his 1997 graduation. In addition to his bachelor's degree from Oneonta, he earned an associate's degree from SUNY Delhi, as well as an MSS from United States Sports Academy.

He played at both Delhi and Oneonta and was all-region twice at Delhi, where he is the career assists leader. At Oneonta he was captain as a senior after winning an ECAC title his junior year.

Mike and his wife, Katie-Lynn, reside in Staten Island, NY, with their young children: sons Michael and Christopher, and daughter Alyssa.



Brittany Allard, Academic Advisor for Student-Athletes

Brittany Allard, moved to administration as NJIT's Academic Advisor for Student-Athletes in

Fall 2015, working in The Learning Center.

For the previous three years, she was an assistant on the NJIT Athletic Training staff, working with women's soccer and men's volleyball teams.

She earned her bachelor's degree, majoring in athletic training, from Bridgewater (MA) State University in 2010 and was the school's 2008-09 Athletic Training Student of the Year.

She earned her master's in Kinesiology at James Madison University in Harrisonburg, VA, in May 2012. At James Madison, she worked with the cross country, track and field, tennis and cheerleading teams.

Brittany resides with her husband Joe in Morristown, NJ.

Athletics Facilities



With construction underway on-campus for the new Wellness and Events Center, which is scheduled to open in Fall 2017, the New Jersey Institute of Technology soccer and men's lacrosse teams play home games and practice in a combination of facilities off campus.

The on-campus facilities include the Estelle and Zoom Fleisher Athletic Center for indoor sports. In addition, NJIT in 2011 opened the Naimoli Family Athletic and Recreational Facility, a multi-purpose indoor facility on the site of the former outdoor tennis courts.

Off-campus venues include the Prudential Center, home of the NHL Devils, which has hosted selected NJIT basketball games; and Branch Brook Park in Newark and Van Cortlandt Park in the Bronx, home sites for NJIT cross country. All except for Van Cortlandt Park are less than two miles from the NJIT campus.

KEAN UNIVERSITY — EAST CAMPUS FACILITY

The new Wellness and Events Center is just another example of NJIT's commitment to building and expanding their athletic facilities in order to compete at the highest level. Until its completion in Fall 2017, the NJIT men's and women's soccer home field for the 2016 season will be in Union, NJ, on the campus of Kean University – East Campus Facility.

The East Campus Facility on the campus of Kean University has been the long-time home for the Kean's men's and women's soccer programs.

The facility, a grass stadium, has two practice fields and a 1,200 seat capacity at the East Campus.

Lubetkin Field at Mal Simon Stadium, the home of the NJIT Highlanders through Fall 2015 served as the host site for the first Great West Conference women's soccer tournament in November 2009 and previously, NJIT hosted the three-day ECAC Division II women's soccer championship tournament..

Athletics Facilities



ESTELLE AND ZOOM FLEISHER ATHLETIC CENTER

The NJIT men's and women's basketball teams and men's and women's volleyball teams play their home games in the Fleisher Athletic Center gymnasium, while the swimming and diving team competes and practices in building's pool. The Fleisher Center also houses intercollegiate fencing, as well as all athletic department offices, varsity and general weight and fitness rooms, and the athletic training room.

In the summer of 2006, the gym underwent renovation to include installation of a new floor and baskets, new lighting, new sound system and new scoreboards, along with entirely new seating for approximately 1,500 spectators after the first phase of renovation. The back bay 'C gym' can be sectioned off from the main competition floor, making the facility useful for intramurals, physical education classes and campus recreation time, while being able to host multiple simultaneous events.

A six-lane swimming pool in Fleisher Athletic Center is home to the NJIT swimming team. Fencing has its own area on the second floor of the building.

In addition to all athletic department offices, the Fleisher Athletic Center also houses the sports medicine staff in the Athletic Training Room and the varsity weight room, supervised by the head strength and condition coach. The building's third floor is home to a fitness center, which is open for use by all students and staff.



NJIT Athletics Weight Room at Estelle and Zoom Fleisher Athletic Center



THE NAIMOLI FAMILY ATHLETIC & RECREATION FACILITY

Opened in 2011, the facility is approximately 25,600 square feet. The Naimoli Family Center will be a multi-purpose space for athletics, community recreation, and gatherings involving large numbers of people.

Built on top of the old outdoor tennis courts adjoining the Fleisher Athletic Center, construction of this new building has been made possible, in part, by a generous gift from Vincent Naimoli '62, Chairman and CEO of Anchor Industries International and Chairman Emeritus/Founder of the Tampa Bay Rays major league baseball team.

The facility houses courts for tennis and is available for other athletic and recreational activities, including practice for basketball and volleyball. It is heated and air conditioned, with flooring appropriate for the intended athletics and recreational activities.

Its indoor tennis courts offer vital year round practice and playing opportunities for NJIT's intercollegiate tennis teams, which have been consistently successful in the transition to Division I. In 2011, the women's tennis team became NJIT's first conference championship team in the Division I era.

TRACK FACILITIES

The NJIT men's and women's indoor track & field team trains at the Jersey City Armory which is home to a 6-lane indoor 200m track while the outdoor track & field team trains at the Nat Turner Park 6-lane outdoor 400m track.

BRANCH BROOK PARK AND VAN CORTLANDT PARK

A hallmark of the NJIT cross country program under veteran coach Al Alonso is its ability to host cross country competition that have made Highlander-sponsored races a popular destination for schools from throughout the New York/New Jersey area.

In 2009, NJIT hosted the Great West Conference championships at Van Cortlandt Park in the Bronx, and the course, which is home to some of the most prestigious events in the sport, is also the home venue for other annual NJIT-hosted races. Branch Brook Park, which is a public park of Essex County, reaches into several towns, including Newark, with the park entrance less than a mile from the NJIT campus.



RED BULL ARENA

Located in Harrison, NJ, just across the Passaic River from Newark and less than three miles from the NJIT campus, the new home of the New York Red Bulls (opened in March 2010) sets the standard for soccer venues across North America.

The state-of-the-art soccer-specific facility is a major component of a multi-billion dollar development.

Red Bull Arena has a number of key design elements which give its seating bowl a close-to-the-action feeling and the unique stadium roof design extends from its leading edge over the entire seating bowl and then curve down to the concourse.

The overall seating capacity for soccer is 25,000, including 30 luxury suites (20 lower level and 10 upper level) and 1,116 club seats. Other amenities include three stadium clubs and two retail outlets.

NJIT and the ASUN Conference



July 1, 2015 will go down as one of the most important days in the history of athletics at New Jersey Institute of Technology.

On that day, NJIT formally became a full member of the Atlantic Sun Conference, giving a Division I conference home to 14 of the 19 Highlander intercollegiate sports. For NJIT, which began the transition to NCAA Division I in 2003-04, becoming a championship-eligible member of the NCAA's highest level on September 1, 2009, membership in the ASUN offers the University's student-athletes the full Division I experience for the first time.

About the ASUN Conference

For 37 years, the ASUN Conference has supported its member institutions in providing intercollegiate athletics programs committed to Building Winners for Life. The ASUN meets its mission by maintaining the highest standards in academic and athletic achievement, creating a balance between student and athlete. Adding an emphasis on sportsmanship in the competitive arena and fostering leadership opportunities through community service, the ASUN, its member institutions and its student-athletes aim for an overall educational experience that is successful in Building Winners for Life.

The 2014-15 season was another bright spot for the ASUN for a number of reasons, as the conference and its member institutions celebrated record levels of excellence both on and off the field:

ASUN Conference

3370 Vineville Avenue, Suite 108-B
Macon, GA 31204-0790

Phone 478-474-3394
Fax 478-474-4272
Home page asunsports.org

Commissioner: Ted Gumbart
Senior Associate Commissioner: Meredith Eaker
Associate Commissioner, Operations: John Roberts
Associate Commissioner, Compliance: Mike Hagen
Assistant Commissioner, Media Relations: Patrick McCoy
Director of Business Services: Pat Bush
Director of Public Relations: Craig Threlkeld
Director of Media Relations: Johannes Schneider
Director of Broadcast Services: Olivia Walter
Executive Assistant, Office Manager: Melody Battle

BUILDING

The student-athletes of the ASUN consistently achieve academic accolades at all levels...

- Three institutions set record highs in the 2014-15 ASUN All-Academic honors. More than 68 percent of the student-athletes in the ASUN posted a 3.0 grade point average or better, setting a new ASUN record, including the nearly 86 percent of Lipscomb student-athletes honored as the Bisons claimed the league Academic Trophy for the second-straight year.
- For the sixth-consecutive year more than 60 percent of the ASUN's teams were honored, a first for the conference. Also, for the third straight year at least three institutions recorded new highs in their final percentages of student-athletes honored academically.
- In addition to the institutional highs in the ASUN All-Academic honors, a total of eight sports also recorded percentage highs and four sports also turned in totals of at least 80 percent of the teams recording a 3.0 GPA or better.

- Eleven total ASUN Conference male and female soccer programs received Team Academic honors from the NSCAA, and seven of eight ASUN women's soccer teams were recognized by the NSCAA.
- A total of eleven ASUN student athletes were honored with Capital One Academic All-District honors, with USC Upstate men's soccer player Marvin Schmiede earning All-American accolades based on his performance on and off the pitch.

WINNERS

... while performing at a high level in the competitive arena ...

- Three men's basketball teams earned invitations to postseason play with North Florida in the NCAA, while FGCU and USC Upstate both earned spots in the CIT. For the seventh-straight season, the conference earned a postseason victory as the Spartans defeated James Madison, 73-72 in the opening round.
- Ty Greene (USC Upstate) capped an exceptional career earning Player of the Year honors in the ASUN, as well as national recognition by capturing the Lou Henson Award as the National Mid-Major Player of the Year.
- The 2015 ASUN Men's Basketball Championship Final drew in a conference record 6,155 fans.
- FGCU women's basketball spent six weeks in the national rankings, en route to conference record-tying seventh seed in the NCAA Tournament. The Eagles posted the league's first women's basketball tournament victory since 1998 with a 75-67 opening round victory against Oklahoma State.
- Every ASUN conference basketball game was aired on the ESPN family of networks. The ASUN accounted for 20 percent of ESPN3's college basketball inventory.
- USC Upstate softball advanced to the NCAA tournament for the third consecutive year, picking up a win against Fairfield. It marked the sixth consecutive time an ASUN team has won an NCAA Regional match up.
- FGCU women's soccer hosted Auburn in the 2014 NCAA Tournament, marking the first time in school history an NCAA Championship event took place on campus and the first time an ASUN women's soccer team hosted a tournament contest.

2016 Women's Volleyball Championship

2016 ASUN Championship
Allen Arena -- Hosted by Lipscomb University
November 17-19, 2016

First Round

#5 USC Upstate 3, #4 North Florida 1 (Final)
#3 FGCU 3, #6 Jacksonville 1 (Final)

Semifinals

#1 Lipscomb 3, #5 USC Upstate 0 (Final)
#3 FGCU 3, #2 Kennesaw State 2 (Final)

Finals

#1 Lipscomb 3, #3 FGCU 1 (Final)

2016 ASUN First Team All-Conference

*OH - Carlyle Nusbaum, Lipscomb
*OH - Amanda Carroll, FGCU
*S - Maggie Rick, FGCU
*OH - Anaiah Boyer#, Kennesaw State
OH - Leigh Pudwill, FGCU
L - Katarina Morton, Kennesaw State
S - Kristi Piedimonte, Kennesaw State

2016 ASUN Second Team All-Conference

MB - Liesl Engelbrecht, Kennesaw State
OH - Lauren Anderson, Lipscomb
RS - Taylor Racich, Lipscomb
L - Brittany Thomas, Lipscomb
OH - Gabby O'Connell, North Florida
OH - Katarina Raicevic, North Florida
S - Madison Haake, USC Upstate

2016 ASUN All-Freshman Team

*OH - Gabby O'Connell, North Florida
*OH - Giovanna Borgiotti, FGCU
*MB - Daniele Serrano, FGCU
*OH - Mallory Mattingly, Jacksonville
*S - Morgan Elmore, Lipscomb
*OH - Montana Swanson, USC Upstate
MB - Maddie Phillips, Lipscomb

* - Denotes unanimous decision

- Denotes two-time First Team All-Conference Selection

- For the first time in conference history two ASUN Volleyball teams were awarded spots in the NCAA Tournament field of 64 with Jacksonville receiving the automatic bid and Lipscomb earning the league's first at large selection.
- Men's golf sent a record-tying four teams to the NCAA Regionals, giving the conference at least two teams in Regional play for eight-straight years.
- FGCU men's tennis head coach CJ Weber was named the Wilson/Intercollegiate Tennis Association Southeast Region Coach of the Year.
- North Florida's Donnie Dewees was selected in the second round by the Chicago Cubs, giving the ASUN three players in the last three years selected in the first two rounds of the MLB First Year Player Draft (Max Pentecost, 2014 and Chris Anderson, 2013).
- Jacksonville pitcher Brian Holcomb, a 17 year U.S. Navy veteran and wounded warrior, earned his first collegiate start at the age of 34 in 2015.
- The second annual ASUN Winners for Life Team honored student-athletes from each of the eight member institutions who best represent the ASUN's commitment to "Building Winners for Life." Those student-athletes maintain the highest standards in academic and athletic achievement; represent a true balance between student and athlete; exhibit and promote sportsmanship in the competitive experience; and exhibit leadership through community service on- and off-campus and at home.
- For the second consecutive year, seven ASUN Conference member institutions were named to the 2014 President's Higher Education Community Service Honor Roll, one with distinction.

FOR LIFE!

...and preparing themselves to become valuable members of their community.

- A total of 14 ASUN Conference teams posted perfect scores for the 2013-14 academic year and 98 percent cleared the NCAA's standard benchmark in the NCAA's 11th annual Academic Progress Rate report. A total of 67 ASUN teams met or exceeded the most recent four-year Division I APR of 978. Additionally, 69 ASUN teams in the 2013-14 measure posted at or above their sport-specific averages.
- The ASUN also had 14 teams recognized by the NCAA for earning Public Recognition Awards, based on their most recent multi-year APR. These awards are given each year to teams with APRs in the top 10 percent in each sport. The ASUN recorded at least 13 teams for the fourth straight year, and for the seventh consecutive year the ASUN has had at least 10 teams

The ASUN Conference is a NCAA Division I league with eight member institutions committed to Building Winners for Life. The ASUN meets the challenge of maintaining the highest standards in academic and athletic achievement with a true balance between student and athlete. Headquartered in Macon, Ga., the ASUN footprint reaches into seven of the top 50 media markets in the nation. The ASUN includes a blend of the most prestigious and dynamic private and public institutions in the region: Florida Gulf Coast University, Jacksonville University, Kennesaw State University, Lipscomb University, New Jersey Institute of Technology, University of North Florida, University of South Carolina Upstate and Stetson University.



2017 Roster

| NO. | NAME | YR. | HT. | POS. | HOMETOWN/HIGH SCHOOL |
|-----|-------------------|-----|------|------|---|
| 1 | Liz Benson | So. | 6-0 | S | Plymouth, MN / Wayzata |
| 2 | Olivia Welsch | So. | 5-7 | L | Stillwater, MN / Stillwater Area |
| 3 | Tess Albyn | Sr. | 6-0 | OH | Centennial, CO / Arapahoe |
| 4 | Alyssa Armada | Sr. | 5-10 | OH | Chicago, IL / Carmel Catholic (Mundelein, IL) |
| 5 | Emily Krachenfels | Jr. | 5-7 | S | Bolingbrook, IL / Neuqua Valley (Naperville, IL) |
| 7 | Iva Mandic | Jr. | 6-2 | OH | Podgorica, Montenegro / Gimnazija Slobodan Skerovic/Coastal Carolina |
| 8 | Jovana Baosic | Jr. | 6-0 | RS | Belgrade, Serbia / Zemunska Gimnazija |
| 12 | Adriana Nieto | Jr. | 5-6 | L | Tao Alta, Puerto Rico / Academia Discipulos de Cristo (Bayamon, PR) |
| 13 | Adrienne Bynoe | Sr. | 5-11 | MB | St. Michael, Barbados / Alleyne |
| 14 | Madi Busler | So. | 5-11 | OH | Parker, CO / Grandview/Cal State Bakersfield |
| 17 | Mikalah Hughes | Sr. | 6-2 | MB | Highlands Ranch, CO / Mountain Vista HS/Fort Hays State/Dowling College |
| 18 | Alahna Diaz | So. | 5-4 | L | Carolina, Puerto Rico / Academia Maria Reina/South Alabama |



2016 Statistics

| RECORD: | OVERALL | HOME | AWAY | NEUTRAL |
|----------------|---------|------|------|---------|
| ALL GAMES | 11-22 | 3-6 | 5-13 | 3-3 |
| CONFERENCE | 2-12 | 2-5 | 0-7 | 0-0 |
| NON-CONFERENCE | 9-10 | 1-1 | 5-6 | 3-3 |

| # | Player | sp | Attack | | | | Set | | Serve | | | Dig | | Blocking | | | | | points | | | |
|----|--------------------|-----|--------|-------|-----|------|-------|------|-------|-----|-----|------|-----|----------|-------|----|-----|-------|--------|-------|----|--------|
| | | | k | k/s | e | ta | pct | a | a/s | sa | se | sa/s | re | dig | dig/s | bs | ba | total | | blk/s | be | bhe |
| 6 | KLOCEK, Katarzyna | 114 | 306 | 2.68 | 194 | 966 | .116 | 18 | 0.16 | 22 | 53 | 0.19 | 23 | 187 | 1.64 | 1 | 65 | 66 | 0.58 | 2 | 1 | 361.5 |
| 7 | WIEZIK, Weronika | 117 | 298 | 2.55 | 173 | 1042 | .120 | 30 | 0.26 | 30 | 40 | 0.26 | 58 | 277 | 2.37 | 2 | 31 | 33 | 0.28 | 4 | 0 | 345.5 |
| 3 | ALBYN, Tess | 117 | 253 | 2.16 | 153 | 845 | .118 | 7 | 0.06 | 0 | 1 | 0.00 | 7 | 54 | 0.46 | 6 | 25 | 31 | 0.26 | 4 | 1 | 271.5 |
| 17 | HUGHES, Mikalah | 116 | 174 | 1.50 | 65 | 423 | .258 | 3 | 0.03 | 0 | 3 | 0.00 | 3 | 13 | 0.11 | 7 | 82 | 89 | 0.77 | 15 | 1 | 222.0 |
| 11 | HARRIS, Anneka | 96 | 138 | 1.44 | 74 | 364 | .176 | 8 | 0.08 | 2 | 9 | 0.02 | 0 | 26 | 0.27 | 8 | 61 | 69 | 0.72 | 22 | 0 | 178.5 |
| 14 | RODRIGUES, Anna | 63 | 70 | 1.11 | 22 | 152 | .316 | 451 | 7.16 | 9 | 15 | 0.14 | 1 | 130 | 2.06 | 3 | 28 | 31 | 0.49 | 5 | 20 | 96.0 |
| 13 | BYNOE, Adrienne | 27 | 24 | 0.89 | 15 | 91 | .099 | 0 | 0.00 | 0 | 0 | 0.00 | 0 | 6 | 0.22 | 2 | 18 | 20 | 0.74 | 5 | 0 | 35.0 |
| 10 | AKUMUO, Mauren | 9 | 3 | 0.33 | 6 | 15 | -.200 | 0 | 0.00 | 0 | 0 | 0.00 | 0 | 2 | 0.22 | 0 | 1 | 1 | 0.11 | 1 | 0 | 3.5 |
| 1 | BENSON, Liz | 81 | 19 | 0.23 | 11 | 67 | .119 | 547 | 6.75 | 22 | 20 | 0.27 | 0 | 159 | 1.96 | 0 | 17 | 17 | 0.21 | 6 | 36 | 49.5 |
| 4 | ARMADA, Alyssa | 64 | 13 | 0.20 | 7 | 44 | .136 | 3 | 0.05 | 5 | 11 | 0.08 | 6 | 74 | 1.16 | 0 | 0 | 0 | 0.00 | 1 | 0 | 18.0 |
| 12 | NIETO, Adriana | 111 | 1 | 0.01 | 0 | 6 | .167 | 97 | 0.87 | 38 | 50 | 0.34 | 41 | 495 | 4.46 | 0 | 0 | 0 | 0.00 | 0 | 4 | 39.0 |
| 2 | WELSCH, Olivia | 117 | 1 | 0.01 | 0 | 13 | .077 | 22 | 0.19 | 16 | 18 | 0.14 | 27 | 198 | 1.69 | 0 | 0 | 0 | 0.00 | 0 | 0 | 17.0 |
| 5 | KRACHENFELS, Emily | 107 | 0 | 0.00 | 1 | 5 | -.200 | 22 | 0.21 | 21 | 18 | 0.20 | 0 | 57 | 0.53 | 0 | 0 | 0 | 0.00 | 0 | 0 | 21.0 |
| | TEAM | - | - | - | - | - | - | - | - | - | - | - | 25 | - | - | - | - | - | - | - | - | - |
| | NJIT | 117 | 1300 | 11.11 | 721 | 4033 | .144 | 1208 | 10.32 | 165 | 238 | 1.41 | 191 | 1678 | 14.34 | 29 | 328 | 193.0 | 1.65 | 65 | 63 | 1658.0 |
| | Opponents | 117 | 1374 | 11.74 | 608 | 3941 | .194 | 1272 | 10.87 | 191 | 281 | 1.63 | 165 | 1703 | 14.56 | 59 | 375 | 246.5 | 2.11 | 55 | 30 | 1811.5 |

| Team Statistics | NJIT | OPP | Date | Opponent | Score | Score by set | Att. |
|----------------------|-------|--------|-----------|-------------------------|-------|-------------------------------|------|
| ATTACK | | | 08/26/16 | vs SFU | w 3-0 | 25-21,25-18,25-21 | 51 |
| Kills | 1300 | 1374 | 08/26/16 | vs Morgan State | w 3-1 | 25-10,15-25,25-19,25-21 | 89 |
| Errors | 721 | 608 | 08/27/16 | vs Quinnipiac | L 1-3 | 24-26,25-21,13-25,18-25 | 67 |
| Total Attacks | 4033 | 3941 | 08/27/16 | at LaSalle | L 0-3 | 19-25,21-25,16-25 | 89 |
| Attack Pct | .144 | .194 | 09/02/16 | at Quinnipiac | L 0-3 | 21-25,22-25,20-25 | 100 |
| Kills/Set | 11.1 | 11.7 | #09/03/16 | at Fordham | w 3-2 | 25-23,25-17,23-25,19-25,15-12 | 127 |
| SET | | | 09/03/16 | at St. Francis Brooklyn | w 3-0 | 25-16,26-24,25-17 | 150 |
| Assists | 1208 | 1272 | 09/10/16 | at LIU Brooklyn | L 1-3 | 25-15,23-25,20-25,16-25 | 157 |
| Attempts | 3956 | 3810 | 09/11/16 | vs Denver | L 0-3 | 15-25,11-25,16-25 | 102 |
| Assist Pct | .305 | .334 | 09/11/16 | at LIU Brooklyn | L 0-3 | 13-25,18-25,20-25 | 113 |
| Assists/Set | 10.3 | 10.9 | 09/13/16 | SAINT PETER'S | w 3-1 | 25-9,22-25,25-14,25-16 | 333 |
| SERVE | | | 09/16/16 | at Lafayette | w 3-1 | 25-19,25-19,27-29,25-20 | 124 |
| Aces | 165 | 191 | 09/17/16 | vs St. Francis Brooklyn | w 3-2 | 27-25,16-25,23-25,25-22,15-12 | 67 |
| Errors | 238 | 281 | 09/17/16 | vs Manhattan | L 1-3 | 19-25,23-25,25-13,22-25 | 52 |
| Attempts | 2447 | 2642 | 09/20/16 | at Saint Peter's | w 3-0 | 25-14,25-23,25-16 | 140 |
| Serve Pct | .903 | .894 | 09/24/16 | at USC Upstate | L 2-3 | 30-28,22-25,25-22,15-25,13-15 | 65 |
| Aces/Set | 1.4 | 1.6 | 09/27/16 | at Iona | L 0-3 | 22-25,20-25,16-25 | 107 |
| SERVE RECEPTIONS | | | 09/30/16 | at FGCU | L 0-3 | 20-25,23-25,17-25 | 482 |
| Errors | 191 | 165 | 10/01/16 | at Stetson | L 0-3 | 22-25,24-26,13-25 | 195 |
| Errors/Set | 1.6 | 1.4 | 10/07/16 | JACKSONVILLE | L 1-3 | 25-21,16-25,23-25,16-25 | 222 |
| Attempts | 2342 | 2192 | 10/09/16 | UNF | L 0-3 | 18-25,22-25,10-25 | 199 |
| Reception Pct | .918 | .925 | 10/14/16 | at Lipscomb | L 0-3 | 22-25,16-25,13-25 | 182 |
| DEFENSE | | | 10/15/16 | at Kennesaw State | L 0-3 | 15-25,17-25,14-25 | 242 |
| Digs | 1678 | 1703 | 10/19/16 | at Fairleigh Dickinson | L 0-3 | 23-25,20-25,23-25 | 101 |
| Digs/Set | 14.3 | 14.6 | 10/22/16 | USC UPSTATE | w 3-1 | 25-21,24-26,25-17,25-16 | 200 |
| BLOCKING | | | 10/23/16 | MARIST | L 1-3 | 25-21,18-25,24-26,16-25 | 177 |
| Block Solo | 29 | 59 | 10/28/16 | KENNESAW STATE | L 1-3 | 17-25,20-25,27-25,18-25 | 200 |
| Block Assist | 328 | 375 | 10/30/16 | LIPSCOMB | L 0-3 | 17-25,17-25,18-25 | 200 |
| Total Blocks | 193.0 | 246.5 | 11/04/16 | at UNF | L 0-3 | 18-25,18-25,14-25 | 305 |
| Blocks/Set | 1.6 | 2.1 | 11/05/16 | at Jacksonville | L 0-3 | 16-25,18-25,26-28 | 175 |
| Block Errors | 65 | 55 | 11/08/16 | at Delaware State | w 3-0 | 25-21,25-15,25-22 | 80 |
| Ball handling errors | 63 | 30 | 11/11/16 | STETSON | w 3-2 | 18-25,23-25,25-20,25-18,15-11 | 199 |
| ATTENDANCE | | | 11/13/16 | FGCU | L 0-3 | 22-25,17-25,16-25 | 200 |
| Total | 1930 | 2934 | | | | | |
| Dates/Avg Per Date | 9/214 | 18/163 | | | | | |

Record in 2-set matches: 0-0

PETER VOLKERT

Head Coach



Peter Volkert, with 378 wins and success at every stop in a women's volleyball coaching career that began at the college level in 1994, was appointed as head coach of the NJIT women's volleyball program in the winter of 2014.

Volkert previously guided three college programs to success, beginning with Division II Pace University

(1994 to 1996) in Pleasantville, NY, and continuing at the Division I level with Manhattan College (1997 to 2003) and Fordham University (2004 to 2012), both in the Bronx.

A 1992 graduate of Concordia College in Bronxville, NY, where he played men's volleyball, including competition against NJIT, Volkert earned a BA in History and Secondary Education at Concordia and two subsequent master's degrees from Iona College (MS in Multicultural Education, 1995; MS in Educational Administration and Supervision in 1998).

He began coaching girls volleyball at Good Counsel High School in White Plains, NY, in 1992 and also coached as an assistant and head coach in men's volleyball at Concordia.

Under veteran coach Volkert, coaching his first season at NJIT, the program nearly doubled its total of wins from the previous season, going from 7 wins in 2013 to 13 wins in 2014.

The 2016 Highlanders finished with a 6-25 overall record, including 1-13 in the A-Sun. The team's 3-2 victory over Stetson in Newark on October 4, was the first win in A-Sun conference play for any team from NJIT, which began conference competition for the first time in 2015-16.

In 2017, NJIT nearly doubled its win total (11) from the previous season, winning the last two out of three matches.

Volkert entered the ranks of women's college volleyball at Pace in 1994. He took over a program that had been 5-23 the year before his arrival and won just one match the season before that. Against that background, he guided Pace to a 78-26 mark in three seasons (1994 to 1996)

In his first year, he led Pace to a conference championship and berth in the 1994 NCAA Division II national tournament. In 1995, Pace made the ECAC postseason tournament and then returned to the NCAA national tournament in 1996, reaching the Division II Sweet Sixteen. His Pace team achieved a fifth-place regional ranking in Division II. Pace's record in his three seasons was 15-12, 33-7, and 30-7, respectively, for a combined mark of 78-26.

Entering the Division I level with Manhattan in time for the 1997 season, he guided the Jaspers to their first Metro Atlantic Athletic Conference championship and first NCAA Division I Tournament spot in 2000 with a 23-11 record, which earned him MAAC Coach of the Year laurels.

In 2002, Manhattan won a program-record 30 matches (30-3 overall) and returned to the NCAAs after claiming another MAAC title. His last Manhattan team, in 2003, won both of its MAAC tournament matches 3-0 for back-to-back championships and another spot in the NCAAs. His record in seven seasons with Manhattan was 132-99.

Moving across the Major Deegan Expressway in the Bronx from Manhattan to Fordham and the Atlantic 10 Conference. He inherited a program that had topped 11 wins just one time in the preceding 11 years and led his new team to a 14-16 record in his first season (2004). The following year, the Rams went 19-14 and in 2006 they won 21 matches (21-15), the program's highest total ever in its 38 years of existence. Volkert won at least 13 matches in four of the five seasons that followed the 21-15 mark. Coaching at Fordham from 2004 to 2012, he led the Rams to A-10 postseason berths in 2006, 2007, 2008, and 2010. At 138-161, he has 21 more career wins than any of the other 10 coaches in Fordham history and his .462 winning percentage ranks third.

"We are very excited to add Peter to our coaching staff,"

said Kaplan, who was an Assistant Director of Athletics at Manhattan for part of Volkert's tenure as coach there. "I have known Peter for over 15 years. He is a proven head coach with a winning track record at his last three head coaching positions. We feel fortunate that he was available and interested in our position."

Immediately taking the helm at NJIT, Volkert served in 2013 as an assistant coach at Iona, which was 13-5 in MAAC regular season competition, the best conference record ever for Iona since the conference began regular season championship play in 1991.

"I'm excited to be a head coach again and to have a second opportunity to work with Lenny (Kaplan)," said Volkert. "He was assistant AD at Manhattan, but he worked closely with our program and I know he'll be supportive of the whole program as the athletic director here at NJIT."

Although his won-lost record is impressive, Volkert is not focused on that area, specifically. "The first thing is we want to put a positive process in place and match that with maximum effort," said the coach. "After that, we will give the players the tools to be in the right place at the right time on both offense and defense. If we do that, the team will get positive results."

Peter and his wife Stacey reside in Cortlandt Manor, NY with their three children Taylor (13), Trevor (11) and Austin (9).



JACKIE GRANGER

Assistant Coach



Jackie Granger, a three-time AVCA All-American Honorable Mention and AVCA All-Northeast Region selection, has joined the NJIT women's volleyball coaching staff in June 2017 as a full-time assistant coach.

One of the best volleyball players to come out of New York, the 6-foot-1 outside hitter from Stony Brook, NY, first gained notice in high school as a key player for North Rockland High School, guiding North Rockland to a State Championship in 2000 and three straight league championships.

At North Rockland High School, Granger, who was named the #1 Player in the State for Class A Volleyball, was a two-time Rockland Journal News Player of the Year as a junior and senior. Granger also earned All-State, All-County and All-League recognition.

"Jackie was one of the best players to play in the Tri-State and kept her passion going by getting into coaching right after college," head coach Peter Volkert added. "I'm excited about her bringing her passion for the game and coaching experience to NJIT."

A 2006 graduate from St. John's with a bachelor's in Communications, Granger became one of the most decorated players in Red Storm history.

In her first season, she combined for one of the best single-season's all-time by a Red Storm hitter, earning all-BIG EAST honorable mention, leading the team in kills (512), attempts (1,127), hitting percentage (.265) while finishing second with (73) total blocks and (32) service aces.

An immediate fixture in the starting lineup for the Red Storm, Granger earned American Volleyball Coaches Association (AVCA) All-American

Honorable Mention in 2003, becoming the first player in St. John's history to receive the honor, including AVCA All-Northeast Region and All-BIG EAST first-team recognition. She set the BIG EAST Conference and St. John's single-season record for kills in a season with 608, which ranked 23rd in the nation.

Granger, who played her fifth-year at Stony Brook, received her master's in Professional Studies in 2007, where she was selected America East Player of the Year, leading the Seawolves to 24 wins and the America East Conference regular season title. She finished first in the America East with 5.08 kills per game, which also ranked 14th in the nation.

"My desire to coach at the Division I level began in 2002 when I walked into my first pre-season practice as a Division I student-athlete," Granger commented. "The experience I had on and off the court is what molded me into the woman I am today. Becoming a part of the Highlander Family and coaching at this level not only allows me to fulfill one of my dreams but also allows me to pass along some of these opportunities to these young ladies. I am very excited to begin working with the girls and making our presence known in the ASUN conference. I can't wait to see what the future of the program has in store."

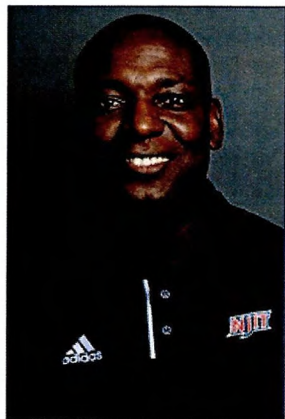
Prior to her arrival at NJIT, Granger was the head volleyball coach at The Masters School (2014 to 2017), in Dobbs Ferry, NY, for both Boys & Girls varsity and middle school teams. She also coached club for the Downstate Juniors Volleyball Club in Peekskill, New York.

Granger's first college coaching position was as an assistant coach for Dominican College in 2014. The Chargers reached 16 wins and advanced to the Central Athletic Collegiate Conference (CACC) quarterfinals.

She resides in Westchester County with her three children – Isaiah, Matthew and Avery.

ANTHONY VALBRUN BARBARA PERRU

Assistant Coach Volunteer Assistant Coach



Valbrun, a graduate of NJIT (electrical engineering), has 30 years experience playing and coaching volleyball. Indeed, he had two seasons as NJIT women's volleyball head coach in 2001 and 2002, when the program competed at the NCAA Division II level.

The seasoned coach, returned to his alma mater to coach in 2014 after an absence of a decade, having followed his tenure as women's head coach with a year as a men's assistant for the Highlanders in 2003.

He later led the Division II program at nearby Bloomfield (NJ) College, guiding that team to four consecutive conference playoff berths, ending in 2010. At the club level, he was a boys' head coach with the Cut Shot Volleyball Club and he has served as head coach of the Atlantic Valley Volleyball Club in Westfield, NJ, since 2007, while adding duties as boys' program director in 2013.

As a player, Valbrun was a member of the national team in his native Haiti and competed internationally, including in the 1988 Pan American Games. He was a two-year starter on the men's team at NJIT.

He resides in Edison, NJ.



Barbara Perru joined the NJIT women's volleyball staff as a volunteer assistant in August 2016.

Perru serves as an assistant coach at the Atlantic Valley Volleyball Club in Westfield, NJ.

As a player, Perru was named first-team all-County, all-Conference and all-State as a setter for East Side High School and played club for the AVVC 18N.



Records Book — Division I Records

Sets Played – Career

| | | |
|-----|-------------------|-----------|
| 454 | Sabrina Baby | 2006-09 |
| 444 | Katrina Hornstein | 2006-09 |
| 429 | Kristy Haeckel | 2006-09 |
| 385 | Danica Vukotic | 2012-15 |
| 368 | Janet Snell | 2009-2012 |
| 366 | Nina Vukotic | 2012-15 |
| 360 | Baaba Hughes | 2007-10 |
| 339 | Audrey Snell | 2008-11 |
| 331 | Erica Schultz | 2007-09 |

Sets Played – Season

| | | |
|-----|---------------------|------|
| 140 | Agnieszka PREGOWSKA | 2007 |
| 140 | Sabrina Baby | 2007 |
| 138 | Erica Schultz | 2007 |
| 136 | Katrina Hornstein | 2007 |

Kills – Career

| | | |
|-------|---------------------|-----------|
| 1,205 | Danica Vukotic | 2012-15 |
| 1,038 | Janet Snell | 2009-2012 |
| 1,035 | Katrina Hornstein | 2006-09 |
| 1,016 | Kristy Haeckel | 2006-09 |
| 927 | Renata Pandolfo | 2008-2012 |
| 886 | Baaba Hughes | 2007-10 |
| 637 | Nina Vukotic | 2012-15 |
| 618 | Fran Edmondson | 2012-14 |
| 610 | Agnieszka PREGOWSKA | 2006-08 |

Kills – Season

| | | |
|-----|---------------------|------|
| 409 | Janet Snell | 2011 |
| 357 | Katrina Hornstein | 2007 |
| 352 | Kristy Haeckel | 2007 |
| 348 | Renata Pandolfo | 2009 |
| 343 | Renata Pandolfo | 2008 |
| 341 | Agnieszka PREGOWSKA | 2007 |

Assists– Career

| | | |
|-------|-------------------|-----------|
| 2,506 | Erica Schultz | 2007-09 |
| 2,425 | Anna Mercado | 2009-2012 |
| 1,636 | Danielle Thompson | 2006-08 |

Assists– Season

| | | |
|------|-------------------|------|
| 1043 | Alyssa Armada | 2014 |
| 1002 | Anna Mercado | 2011 |
| 966 | Danielle Thompson | 2006 |
| 887 | Erica Schultz | 2007 |
| 830 | Erica Schultz | 2008 |
| 821 | Emily Krachenfels | 2015 |
| 799 | Erica Schultz | 2009 |

Service Aces– Career

| | | |
|-----|---------------------|---------|
| 192 | Sabrina Baby | 2006-09 |
| 127 | Agnieszka PREGOWSKA | 2006-08 |
| 113 | Katrina Hornstein | 2006-09 |
| 97 | Renata Pandolfo | 2008-12 |
| 76 | Kristy Haeckel | 2006-09 |
| 75 | Danica Vukotic | 2012-15 |

Service Aces– Season

| | | |
|----|---------------------|------|
| 71 | Sabrina Baby | 2007 |
| 57 | Sabrina Baby | 2006 |
| 50 | Agnieszka PREGOWSKA | 2007 |
| 46 | Renata Pandolfo | 2008 |
| 45 | Katrina Hornstein | 2007 |
| 45 | Sabrina Baby | 2008 |

Digs– Career

| | | |
|-------|-------------------|---------|
| 1,927 | Sabrina Baby | 2006-09 |
| 1,742 | Renata Pandolfo | 2008-12 |
| 1,215 | Katrina Hornstein | 2006-09 |
| 1,126 | Audrey Snell | 2008-11 |
| 961 | Janet Snell | 2009-12 |

Digs– Season

| | | |
|-----|-----------------|------|
| 795 | Sabrina Baby | 2007 |
| 685 | Renata Pandolfo | 2012 |
| 608 | Sabrina Baby | 2009 |
| 542 | Sabrina Baby | 2008 |
| 522 | Audrey Snell | 2011 |
| 496 | Adriana Nieto | 2016 |
| 442 | Adriana Nieto | 2015 |
| 423 | Renata Pandolfo | 2008 |
| 414 | Audrey Snell | 2010 |

Total Blocks – Career

| | | |
|-----|---------------------|---------|
| 289 | Kristy Haeckel | 2006-09 |
| 253 | Valerie Carroll | 2010-14 |
| 230 | Agnieszka PREGOWSKA | 2006-08 |
| 177 | Fernanda Lima | 2009-11 |
| 139 | Rebecca Wilkinson | 2006-07 |

Total Blocks – Season

| | | |
|-----|---------------------|------|
| 111 | Agnieszka PREGOWSKA | 2007 |
| 91 | Valerie Carroll | 2014 |
| 86 | Kristy Haeckel | 2008 |
| 85 | Valerie Carroll | 2012 |
| | Rebecca Wilkinson | 2007 |
| 81 | Fran Edmondson | 2014 |
| 82 | Kristy Haeckel | 2006 |
| 77 | Kristy Haeckel | 2007 |

Total Points – Career

| | | |
|-------|---------------------|---------|
| 1,346 | Danica Vukotic | 2012-15 |
| 1,272 | Kristy Haeckel | 2006-09 |
| 1,214 | Katrina Hornstein | 2006-09 |
| 1,127 | Agnieszka PREGOWSKA | 2006-08 |

Total Points – Season

| | | |
|-----|---------------------|------|
| 462 | Agnieszka PREGOWSKA | 2007 |
| 442 | Danica Vukotic | 2015 |
| 422 | Renata Pandolfo | 2008 |
| 421 | Fran Edmondson | 2014 |
| 412 | Kristy Haeckel | 2007 |
| 406 | Renata Pandolfo | 2009 |
| 383 | Danica Vukotic | 2014 |
| 377 | Kristy Haeckel | 2006 |

Records listed are for seasons in Division I competition only (competition began in 2006 season). Some individuals listed spent part of their careers in Division II competition.

Records Book — Division I Superlatives, Individual

Kills

- 32, Nina Vukotic vs. Rider (5 sets) (9.18.15)
- 30, Danica Vukotic vs. Rider (5 sets) (9.18.15)
- 30, Kristy Haeckel vs. Maryland Eastern Shore (5 sets) (11.4.06)
- 29, Danica Vukotic at Central Connecticut State (4sets) (9.21.13)
- 19, Renata Pandolfo at Chicago State (3 sets) (11.14.09)

Assists

- 66, Emily Krachenfels vs. Rider (5 sets) (9.18.15)
- 63, Danielle Thompson vs. Maryland Eastern Shore (5 sets) (11.4.06)
- 51, Anna Rodrigues at USC Upstate (5 sets) (9.24.16)
- 50, Alyssa Armada at Fairleigh Dickinson (4 sets) (9.17.14)

Aces

- 8, Sabrina Baby vs. Providence (5 sets) (10.26.07)
- 6, Kristy Haeckel vs. Manhattan (3 sets) (9.1.06)
- 6, Sabrina Baby vs. Quinnipiac (3 sets) (10.3.06)
- 6, Kristy Haeckel vs. Winston-Salem State (3 sets) (10.20.06)
- 6, Agnieszka Pregowska vs. St. Francis (NY) (9.5.08)
- 6, Renata Pandolfo vs. St. Francis Brooklyn (9.5.08)

Digs

- 44, Renata Pandolfo at Lafayette (5 sets) (10.23.12)
- 45, Sabrina Baby at South Dakota (4 sets) (11.5.09)
- 34, Renata Pandolfo at Temple (3 sets) (9.12.12)

Block Solo

- 7, Agnieszka Pregowska vs. Sacred Heart (5 sets) (10.27.07)
- 6, Renata Pandolfo vs. American (5 sets) (10.11.08)

Block Assist

- 9, Aneka Harris at Fordham (5 sets) (9.13.16)
- 8, Valerie Carroll at Fairleigh Dickinson (4 sets) (9.14.14)

Total Blocks

- 12, Agnieszka Pregowska vs. Sacred Heart (5 sets) (10.27.07)
- 10, Aneka Harris at Fordham (5 sets) (9.3.16)
- 9, Kristy Haeckel vs. Hartford (4 sets) (9.9.06)

Points

- 33, Kristy Haeckel vs. Maryland Eastern Shore (5 sets) (11.4.06)
- 23.5, Kristy Haeckel at Delaware State (4 sets) (10.21.06)
- 23.5, Katrina Hornstein vs. Utah Valley (4 sets) (9.28.07)
- 25, Renata Pandolfo at Chicago State (3 sets) (11.14.09)

Division I Superlatives, Team

NJIT

- 82 vs. Maryland Eastern Shore (11.4.06)
- 77 vs. Maryland Eastern Shore (11.4.06)
- 17 vs. Saint Francis Brooklyn (9.28.07)
- 124 vs. South Dakota (11.5.09)
- 9 at South Dakota (10.25.09)
- 20 at Chicago State (10.15.11)
- 15 vs. Seton Hall (10.7.10)
- 95 vs. Maryland Eastern Shore (11.4.06)

Kills

Assists

Aces

Digs

Block Solo

Block Assist

Total Blocks

Points

Opponents

- 85, Seton Hall (9.5.07)
- 77, Seton Hall (9.5.07)
- 23, Delaware State (11.10.07)
- 114, Utah Valley (10.15.09)
- 9, Delaware State, (11.8.08)
- 30, Howard (10.27.07)
- 34, Howard (10.27.07)
- 105, Columbia (10.29.07)

All-Time vs. Division I Opponents

(matches played in NJIT's Division I era—began 2006)

| | | | | | |
|-------------------------------------|-----|----------------------------------|-----|--------------------------------|------|
| Akron | 1-0 | Houston Baptist | 2-8 | Radford | 0-1 |
| American | 0-5 | Howard | 4-2 | Rhode Island | 0-1 |
| Arkansas | 0-1 | Iona | 1-3 | Rider | 2-2 |
| Army | 0-6 | Incarname Word | 1-0 | Robert Morris | 0-2 |
| Boston College | 0-1 | Jacksonville | 0-4 | Rutgers | 0-3 |
| Bryant | 1-0 | Kennesaw State | 0-4 | Sacred Heart | 3-3 |
| Bucknell | 1-1 | Lafayette | 8-3 | Saint Francis U. | 2-1 |
| Butler | 0-1 | La Salle | 4-2 | Saint Peter's | 11-4 |
| Cal State-Bakersfield | 0-2 | Lehigh | 2-2 | Stetson | 2-2 |
| Central Connecticut State | 1-6 | Lipscomb | 0-4 | St. Francis Brooklyn | 12-3 |
| Chicago State | 9-2 | LIU Brooklyn | 0-5 | St. John's | 0-1 |
| Cincinnati | 0-1 | Loyola (MD) | 2-1 | San Francisco | 0-1 |
| Columbia | 0-5 | Maine | 0-1 | Seton Hall | 1-5 |
| Coppin State | 2-2 | Manhattan | 4-4 | South Dakota | 1-4 |
| Cornell | 1-0 | Marist | 1-5 | Stony Brook | 1-0 |
| Dartmouth | 1-2 | Maryland | 0-1 | St. John's | 0-1 |
| Delaware State | 4-2 | Maryland Eastern Shore | 0-2 | TCU | 0-1 |
| Denver | 0-1 | Morgan State | 2-1 | Temple | 0-2 |
| Fairfield | 0-3 | Navy | 0-1 | Texas-El Paso | 0-1 |
| Fairleigh Dickinson | 6-9 | Nebraska at Omaha | 0-1 | Texas-Pan American | 4-5 |
| Florida Gulf Coast | 0-3 | New Hampshire | 0-1 | Tulsa | 0-2 |
| Fordham | 2-3 | Northeastern | 0-1 | Utah Valley | 1-10 |
| Georgetown | 0-1 | North Dakota | 0-6 | UMass Lowell | 1-1 |
| Grambling State | 1-0 | North Florida | 0-4 | UMBC | 0-3 |
| Grand Canyon | 0-1 | North Texas | 0-1 | USC Upstate | 1-3 |
| Hampton | 0-1 | Oral Roberts | 0-1 | Valparaiso | 0-1 |
| Hartford | 3-4 | Penn | 0-1 | Virginia Tech | 0-2 |
| Harvard | 0-2 | Princeton | 0-1 | Wagner | 6-0 |
| Hofstra | 1-4 | Providence | 3-3 | Winston-Salem State | 1-0 |
| Holy Cross | 0-1 | Quinnipiac | 3-2 | Yale | 0-2 |

NCAA National Statistical Leaders

1989 Division III

Yanet Gonzalez – service aces per set

1991 Division III

Kathy Eng – service aces per set

2004 Division II

Angie Casado – ranked 38th in aces per set

Angie Casado – ranked 4th in kills per set

2005 Division II

Agnieszka Pregowska – ranked 4th in kills per set

2009 Division I

Sabrina Baby – National Statistical Champion in digs per set (6.27 dps)

NJIT – National Statistical Champion in digs per set (19.81 dps)

2012 Division I

Renata Pandolfo – ranked 4th in digs per set (6.12 dps)

All-Time Program History

| Year | Overall W-L | WIAC | IAC | Head Coach | Captains | MVP |
|---|-------------|------|-----|----------------|--------------------------------|------------------|
| 1982 | 1-11 | --- | --- | Oleg Moiseenko | Heidi Hartung, Becky Miranda | |
| 1983 | 6-15 | --- | --- | Dave DeNure | Heidi Hartung, Becky Miranda | Sharon Ingram |
| 1984 | 10-5 | 2nd | --- | Dave DeNure | Heidi Hartung, Becky Miranda | Becky Miranda |
| 1985 | 14-6 | 1st | 2nd | Dave DeNure | Eileen Begasse, Marilyn Dawson | Marilyn Dawson |
| 1986 | 24-8 | 1st | 1st | Dave DeNure | Marilyn Dawson | Clairie Nicolaou |
| 1987 | 22-8 | 2nd | 2nd | Dave DeNure | | Clairie Nicolaou |
| <i>1987 Postseason: ECAC NY/NJ semifinals</i> | | | | | | |
| 1988 | 26-6 | 1st | 1st | Dave DeNure | Liz Goldrick, Felicia Mays | Liz Goldrick |
| <i>1988 Postseason: ECAC NY/NJ semifinals</i> | | | | | | |
| 1989 | 15-17 | 2nd | 2nd | Dave DeNure | Denise Corsaro | Denise Corsaro |
| 1990 | 23-12 | 2nd | 2nd | Dave DeNure | Kathy Eng | Kathy Eng |
| 1991 | 10-16 | | | Dave DeNure | | Kathy Eng |
| 1992 | 11-13 | 2nd | 2nd | Kerry Keith | Kathy Eng | Kathy Eng |
| 1993 | 7-20 | | 3rd | Bob Fordi | Diana Nieto, Bonnie Tai | Donna King |
| 1994 | 9-14 | 3rd | 2nd | Bob Fordi | Lenny Jiminez, Bonnie Tai | Lenny Jiminez |
| 1995 | 8-19 | | | Bob Fordi | Sandra Caceras | Lenny Jiminez |
| 1996 | No team | | | | | |
| 1997 | No team | | | | | |

NCAA Division II

| Year | Record | | Head Coach | Captains | MVP |
|--------------|--------|------|-----------------|-------------------------------|---------------------|
| NYCAC | | | | | |
| 1998 | 0-10 | | Jon Bednasz | | Melsha Winchester |
| 1999 | 1-17 | | Jon Bednasz | | Melsha Winchester |
| CACC | | | | | |
| 2000 | 0-16 | 8th | Manny Del Rio | Nikiesha Joseph | Carisa Butensky |
| 2001 | 0-20 | 8th | Anthony Valbrun | Nikeisha Joseph | Marta Oporska |
| 2002 | 0-18 | 9th | Anthony Valbrun | Eliana Lara, Stacy Waldburger | Chevanese Samms |
| 2003 | 0-21 | 10th | Pavlina Klimova | Dolores Martinez | Dolores Martinez |
| 2004 | 13-13 | 5th | Pavlina Klimova | Dolores Martinez | Angie Casado |
| 2005 | 9-20 | 8th | Ryan McNeil | Danielle Thompson | Agnieszka Pregowska |

NCAA Division I (reclassification years 2006-08)

| Year | Record | | Head Coach | Captains | MVP | |
|-------------|--------|------|---------------|--|-------------------|---------------|
| 2006 | 10-21 | --- | Ryan McNeil | Agnieszka Pregowska, Danielle Thompson | Kristy Haeckel | |
| 2007 | 13-24 | --- | Ryan McNeil | Agnieszka Pregowska, Sabrina Baby | Katrina Hornstein | |
| 2008 | 18-16 | --- | Ryan McNeil | Agnieszka Pregowska, Sabrina Baby | Katrina Hornstein | |
| GWC | | | | | | |
| 2009 | 17-11 | 3rd | JR Martins | Sabrina Baby, Renata Pandolfo | Sabrina Baby | |
| 2010 | 4-22 | 6th | JR Martins | Game Captains | | |
| 2011 | 11-18 | 4th | JR Martins | Game Captains | | |
| 2012 | 12-16 | 4th | JR Martins | Game Captains | Janet Snell | |
| 2013 | 7-15 | -- | JR Martins | Game Captains | Fran Edmondson | |
| 2014 | 13-22 | -- | Peter Volkert | Valerie Carroll, Camilla Tinari | Valerie Carroll | |
| ASUN | | | | | | |
| 2015 | 6-25 | 1-13 | 8th | Peter Volkert | Danica Vukotic | |
| 2016 | 11-22 | 2-12 | 7th | Peter Volkert | Game Captains | Adriana Nieto |

Historical Notes:
 --Competing in NCAA Division III at the time it started women's volleyball in 1982, NJIT athletics remained at that level through the 1997. However, there were not teams in 1996 and 1997. For much of the time it had teams in Division III, NJIT held membership in both the WIAC (Women's Intercollegiate Athletic Conference) and IAC (Independent Athletic Conference); the IAC sponsored championship competition in sports for both genders.

--In 1997, moving to NCAA Division II, NJIT joined the New York Collegiate Athletic Conference, which later changed its name to the current East Coast Conference. NJIT moved from the NYCAC to the CACC (Central Atlantic Collegiate Conference) in 2000 and remained there until reclassifying to NCAA Division I.

--From 2006 to 2008, NJIT was a Division I Independent. In 2009, when the GWC (Great West Conference) became a multi-sport league, it sponsored championship play in women's volleyball, continuing through the 2012 season. The GWC ceased operations on July 1, 2013

All-Time Honors

DIVISION I ERA First season 2006-07

NCAA NATIONAL STATISTICAL CHAMPION INDIVIDUAL DIGS PER SET 2009

Sabrina Baby
*(1st year NJIT players are eligible for
DI championship)*

TEAM DIGS PER SET 2009

NJIT
*(1st year NJIT is eligible for DI
championship)*

ACADEMIC ALL-AMERICA CoSIDA/ESPN The

Magazine Division I 2009

Sabrina Baby *(national 3rd team)*
*1st NJIT student-athlete chosen in the
Division I era)*

GWC SPORTSMANSHIP AWARD (all sports)

2009-10
Sabrina Baby

DIVISION I ALL-INDEPENDENT TEAM 2007

Sabrina Baby (2nd)
Kristy Haeckel (2nd)
Agnieszka PREGOWSKA (2nd)
Erica Schultz (HM)

DIVISION I INDEPENDENT ALL-ACADEMIC

2006

Emese Gyuricza
Agnieszka PREGOWSKA

2007

Sabrina Baby
Katrina Hornstein
Danielle Thompson

2008

Sabrina Baby
Katrina Hornstein

GREAT WEST CONFERENCE

DEFENSIVE PLAYER OF THE YEAR 2012

Renata Pandolfo

2009

Sabrina Baby

ALL-GREAT WEST CONFERENCE

2012

Janet Snell (1st)
Danica Vukotic (1st)
Renata Pandolfo (2nd)

2011

Janet Snell (2nd)

2009

Sabrina Baby (1st)
Renata Pandolfo (1st)

GWC ALL-NEWCOMER 2012

Danica Vukotic

2009

Fernando Lima

GWC ALL-ACADEMIC 2008

Sabrina Baby
Erica Schultz
Katrina Hornstein

*(note: although GWC competition
did not begin until 2009-10, the
conference began an awards program
that included all-academic in 2008-09)*

2009

Sabrina Baby
Erica Schultz
Katrina Hornstein

2011

Cathy Leung
Gretchen Von Koenig
Anna Mercado

2012

Anna Mercado
Cathy Leung
Katie Goswick
Camilla Tinari

DIVISION II ERA

CACC NEWCOMER OF THE YEAR 2004

Angie Casado

ALL-CACC 2005

Agnieszka PREGOWSKA

DIVISION III ERA

POSTSEASON APPEARANCES ECAC Metro NY/NJ 1987 (semifinals), 1988 (semifinals)

CONFERENCE CHAMPIONSHIP WIAC

1985, 1986, 1988
IAC
1986, 1988

IAC PLAYER OF THE YEAR 1988

Sonia Zacher

GTE REGIONAL ACADEMIC ALL-AMERICA

1988

Sonia Zacher

All-WIAC 1984

Eileen Begasse
Marilyn Dawson
Heidi Hartung

1985

Eileen Begasse
Marilyn Dawson
Liz Goldrick

1986

Marilyn Dawson
Claire Nicolau

1987

Claire Nicolau

1988

Denise Corsaro
Liz Goldrick
Gina Ochs (2nd)
Sonia Zacher

1989

Denise Corsaro
Kathy Eng (2nd)
Ursula Fukazawa (2nd)
Yanet Gonzalez

1990

Kathy Eng
Yanet Gonzalez
Gina Ochs
Joanie Pratt

1991

Kathy Eng
Connie Krzeminski (HM)

1992

Kathy Eng

1995

Wendy Gruenewald (HM)
Lenny Jiminez

All-IAC 1986

Denise Corsaro
Marilyn Dawson
Liz Goldrick (2nd)
Claire Nicolau
Regina Rygelis (2nd)

1987

Liz Goldrick
Claire Nicolau
Gina Ochs (2nd)
Sonia Zacher (2nd)

1988

Denise Corsaro
Liz Goldrick
Yanet Gonzales (2nd)
Gina Ochs
Sonia Zacher

1989

Denise Corsaro
Kathy Eng (2nd)
Ursula Fukazawa (2nd)
Yanet Gonzalez

1990

Kathy Eng
Ursula Fukazawa
Yanet Gonzalez
Gina Ochs
Joanie Pratt

1991

Kathy Eng
Connie Krzeminski
Kathy Liu (HM)

1992

Kathy Eng
Kathy Liu (2nd)
Tulia Rios (2nd)
Edyta Wrona

1993

Donna King (2nd)

1995

Wendy Gruenewald (2nd)
Lenny Jiminez (2nd)

All-Jersey 9 1990

Kathy Eng

1991

Kathy Eng
Connie Krzeminski

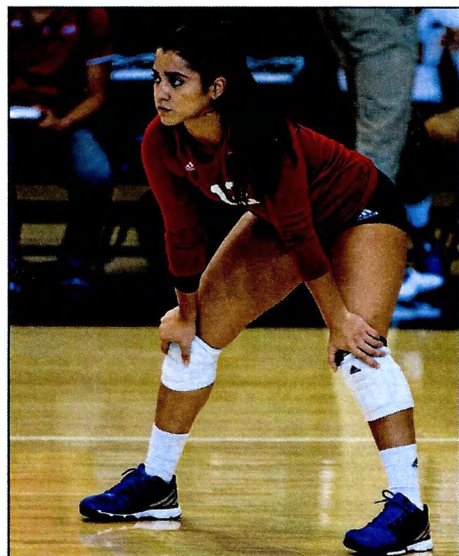
1992

Kathy Eng

1993

Donna King
Clara Ponton

Year-by-Year



Adriana Nieto

1982 (1-10)

| | | | |
|-------|----------------------------------|---|-----|
| 9/29 | at Seton Hall | L | 0-2 |
| 9/29 | vs. Lehigh (at Seton Hall) | L | 0-2 |
| 10/6 | at Rutgers-Newark | L | 1-2 |
| 10/11 | HUNTER | L | 1-2 |
| 10/13 | at William Paterson | L | 0-2 |
| 10/13 | vs. Queens (at William Paterson) | L | 0-2 |
| 10/15 | at Rutgers-Livingston | L | 1-3 |
| 10/22 | at Stockton | L | 1-3 |
| 10/26 | at Kean | L | 0-2 |
| | WILLIAM PATERSON | L | 0-2 |
| | COUNTY COLLEGE OF MORRIS | W | 3-2 |

Coach: Oleg Moseenko

1983 (6-15)

| | | | |
|-------|------------------------------------|---|-----|
| 9/21 | at St. Elizabeth | W | 3-1 |
| 9/24 | at FDU Madison | W | 2-0 |
| 9/24 | vs. Moravian (PA) (at FDU Madison) | L | 0-2 |
| 9/24 | vs. St. Elizabeth (at C.S.E) | L | 2-1 |
| 9/28 | SUNY OLD WESTBURY | W | 3-0 |
| 10/5 | at Hunter | L | 2-1 |
| 10/5 | vs. Dowling (at Hunter) | L | 0-2 |
| 10/7 | RUTGERS-NEWARK | L | 2-3 |
| 10/8 | at Stockton St. | L | 0-2 |
| 10/8 | vs. Jersey City (at Stockton) | W | 2-0 |
| 10/11 | at Upsala | L | 0-3 |
| 10/13 | KEAN | L | 2-3 |
| 10/19 | SETON HALL | L | 0-3 |
| 10/21 | vs. Clarion (PA) (at ESU) | L | 0-2 |
| 10/21 | vs. La Salle (at ESU) | L | 0-2 |
| 10/22 | vs. Central Connecticut (at ESU) | L | 0-2 |
| 10/22 | vs. WM Paterson (at ESU) | L | 0-3 |
| 10/22 | vs. Scranton (at ESU) | W | 2-0 |
| 10/26 | WILLIAM PATERSON | L | 0-3 |
| 11/1 | at County College of Morris | L | 2-3 |
| 11/9 | at SUNY Old Westbury | W | 3-2 |

Coach: Dave DeNure

1984 (12-15)

| | | | |
|-------|------------------------------------|---|-----|
| 9/19 | at St. Elizabeth* | W | 3-2 |
| 9/22 | at St. Elizabeth | W | 2-0 |
| 9/22 | vs. Stockton (at St. Elizabeth) | L | 1-2 |
| 9/22 | vs. Moravian (at St. Elizabeth) | L | 0-2 |
| 9/25 | at Caldwell* | W | 3-0 |
| 9/27 | at SUNY Old Westbury | W | 3-1 |
| 9/29 | vs. Albright (at Upsala) | W | 2-1 |
| 9/29 | vs. Hunter (at Upsala) | L | 0-2 |
| 9/29 | at Upsala | L | 0-2 |
| 9/29 | vs. Gallaudet (at Upsala) | L | 0-2 |
| 10/1 | at Bloomfield | W | 3-1 |
| 10/3 | at Rutgers-Newark | L | 0-2 |
| 10/3 | vs. Bloomfield (at Rutgers-Newark) | W | 2-0 |
| 10/10 | at Ramapo* | W | 3-0 |
| 10/12 | vs. Army (at ESU) | L | 0-2 |
| 10/12 | vs. Cortland (at ESU) | L | 0-2 |
| 10/13 | vs. Marywood (at ESU) | L | 0-2 |
| 10/13 | vs. Scranton (at ESU) | L | 0-2 |
| 10/13 | vs. Wilkes (at ESU) | L | 0-2 |
| 10/16 | vs. CCONY (at Hunter) | L | 0-2 |
| 10/16 | at Hunter | L | 0-2 |
| 10/18 | vs. Centenary (at FDU Madison) | W | 2-0 |
| 10/18 | at FDU Madison* | W | 3-0 |
| 10/23 | at Centenary (NJ) * | W | 3-0 |
| 10/25 | vs. Ramapo (at William Paterson) | W | 2-0 |
| 10/25 | at William Paterson | L | 0-2 |
| 11/2 | UPSALA* * | L | 1-3 |

*W.I.A.C Conference matches

W.I.A.C Conference (5-1)

Coach: Dave DeNure

1985 (15-8-4)

| | | | |
|-------|---------------------------------------|---|-----|
| 9/18 | ST. ELIZABETH* | W | 3-0 |
| 9/21 | vs. St. Elizabeth (at FDU) | W | 2-0 |
| 9/21 | vs. Stockton St. (at FDU) | W | 2-0 |
| 9/21 | vs. Marywood (at FDU) | W | 2-0 |
| 9/21 | vs. Muhlenburg (at FDU) | L | 1-2 |
| 9/24 | HUNTER | L | 0-3 |
| 10/1 | at Bloomfield | W | 3-1 |
| 10/5 | MT. ST. VINCENT | T | 1-1 |
| 10/5 | BARUCH | T | 1-1 |
| 10/5 | JERSEY CITY | W | 2-0 |
| 10/5 | RAMAPO | T | 1-1 |
| 10/5 | DOWLING | L | 0-2 |
| 10/9 | RAMAPO* | L | 1-3 |
| 10/12 | vs. St. Joseph's (at Old Westbury) | T | 1-1 |
| 10/12 | vs. Hunter (at Old Westbury) | L | 0-2 |
| 10/12 | vs. Mt. St. Vincent (at Old Westbury) | L | 0-2 |
| 10/16 | OLD WESTBURY | W | 3-1 |
| 10/20 | STEVENS TECH | W | 2-0 |
| 10/20 | NY POLYTECH | W | 2-0 |
| 10/20 | WESTERN CONNECTICUT | L | 0-2 |
| 10/20 | NY MARITIME | W | 2-0 |
| 10/20 | WESTERN CONNECTICUT | L | 0-2 |
| 10/22 | CENTENARY* | W | 3-1 |
| 10/24 | FDU-MADISON* | W | 3-1 |
| 10/29 | CALDWELL | W | 2-0 |
| 10/30 | at County College of Morris | W | 3-1 |
| 11/2 | UPSALA* | W | 3-2 |

*W.I.A.C Conference matches

W.I.A.C Conference (4-1)

Coach: Dave DeNure

1986 (24-8)

| | | | |
|-------|---|---|-----|
| 9/20 | at FDU-Madison* | W | 2-0 |
| 9/20 | vs. Muhlenburg (at FDU-Madison) | L | 1-2 |
| 9/20 | vs. Mt. St. Vincent's (at FDU-Madison) | W | 2-0 |
| 9/20 | vs. Albright (at FDU-Madison) | W | 2-0 |
| 9/20 | vs. Marywood (at FDU-Madison) | L | 0-2 |
| 9/24 | at Hunter | L | 1-2 |
| 9/24 | vs. Medgar Evers (at Hunter) | W | 2-0 |
| 9/25 | at St. Elizabeth* | W | 3-1 |
| 10/1 | at Kean* | W | 3-1 |
| 10/2 | at Ramapo* | L | 2-3 |
| 10/4 | MT. ST. VINCENT | W | 2-0 |
| 10/4 | JERSEY CITY STATE | W | 2-0 |
| 10/4 | BARUCH | L | 1-2 |
| 10/4 | RAMAPO* | W | 2-0 |
| 10/4 | UPSALA* | L | 1-2 |
| 10/7 | SUNY OLD WESTBURY | W | 3-0 |
| 10/9 | at Jersey City State | W | 2-0 |
| 10/9 | vs. William Paterson (at Jersey City St.) | W | 2-1 |
| 10/14 | NY POLY | W | 3-0 |
| 10/16 | at NY Maritime | W | 2-0 |
| 10/16 | vs. W. Connecticut (at NY Maritime) | W | 2-1 |
| 10/18 | at Stockton | L | 3-0 |
| 10/21 | at Centenary* | W | 3-0 |
| 10/22 | RUTGERS-NEWARK | L | 1-2 |
| 10/22 | BLOOMFIELD | W | 2-0 |
| 10/23 | at FDU-Madison* | W | 3-0 |
| 10/27 | at Upsala* | W | 3-0 |
| 10/29 | at Caldwell | W | 3-0 |
| 10/30 | COUNTY COLLEGE OF MORRIS | W | 3-0 |
| 11/5 | at Stevens Tech | W | 3-0 |
| 11/12 | vs. Ramapo* (at St. Elizabeth) | W | 2-1 |
| 11/12 | vs. Upsala* (at St. Elizabeth) | W | 2-1 |

*WIAC Conference matches

WIAC Record (7-1); 1st place

IAC Record (4-0); 1st place

Coach: Dave DeNure

1987 (22-8)

| | | | |
|-------|--------------------------|---|-----|
| 9/19 | Suburban Tournament | | |
| | vs. Marywood | L | 0-2 |
| | vs. St. Elizabeth | W | 2-0 |
| | vs. FDU-Madison | W | 2-0 |
| | vs. Albright | W | 2-0 |
| | vs. Marywood | W | 2-0 |
| 9.22 | at Pratt** | W | 3-0 |
| 9/23 | HUNTER | L | 0-2 |
| 9/23 | STATEN ISLAND | W | 2-0 |
| 9/24 | ST. ELIZABETH* | W | 3-0 |
| 10/1 | RAMAPO* | W | 3-0 |
| 10/3 | NJ TECH TOURNAMENT | | |
| 10/3 | RAMAPO | W | 2-0 |
| 10/3 | JOHN JAY | W | 2-0 |
| 10/3 | JERSEY CITY STATE | W | 2-0 |
| 10/3 | BARUCH | L | 0-2 |
| 10/3 | HUNTER | L | 0-2 |
| 10/8 | JERSEY CITY STATE | W | 2-1 |
| 10/8 | WILLIAM PATERSON | W | 2-1 |
| 10/13 | at NYU Poly** | W | 3-0 |
| 10/14 | at Maritime** | L | 1-2 |
| 10/14 | at Western Connecticut** | W | 2-0 |
| 10/17 | STOCKTON STATE | W | 3-0 |
| 10/20 | KEAN | W | 3-1 |

Year-by-Year

| | | | |
|-------|-----------------------------|---|-----|
| 10/21 | at Rutgers-Newark | L | 1-2 |
| 10/21 | at Bloomfield | W | 2-0 |
| 10/22 | FDU-MADISON* | W | 3-0 |
| 10/26 | UPSALA* | L | 1-3 |
| 10/28 | CALDWELL | W | 3-0 |
| 10/29 | at COUNTY COLLEGE OF MORRIS | W | 3-0 |
| 11/4 | STEVENS* | W | 3-0 |
| 11/14 | vs. NYU (ECAC) | L | 0-3 |

*WAC Matches

**IAC Matches

Coach: Dave DeNure

1988 (26-6)

| | | | |
|-------|--------------------------------------|---|-----|
| 9/17 | at Staten Island | W | 2-0 |
| 9/17 | vs. St. Elizabeth (at Staten Island) | W | 2-0 |
| 9/17 | vs. Albright (at Staten Island) | W | 2-0 |
| 9/17 | vs. Marywood (at Staten Island) | W | 2-0 |
| 9/17 | vs. Stockton (at Staten Island) | W | 2-1 |
| 9/21 | at Hunter | W | 2-0 |
| 9/21 | vs. Staten Island (at Hunter) | W | 2-0 |
| 9/22 | RUTGERS-NEWARK | L | 2-3 |
| 9/29 | RAMAPO | W | 3-2 |
| 10/1 | NJIT Tournament | | |
| 10/1 | JERSEY CITY STATE | W | 2-0 |
| 10/1 | RUTGERS-NEWARK | W | 2-1 |
| 10/1 | FDU-MADISON | W | 2-0 |
| 10/1 | RAMAPO | W | 2-0 |
| 10/5 | ST. ELIZABETH | W | 3-2 |
| 10/6 | JERSEY CITY STATE | W | 2-0 |
| 10/6 | WILLIAM PATERSON | L | 0-2 |
| 10/8 | STEVEN TECH | W | 2-0 |
| 10/8 | STOCKTON STATE | W | 2-0 |
| 10/8 | SAINT PETER'S | L | 0-2 |
| 10/8 | RUTGERS-NEWARK | L | 0-2 |
| 10/11 | POLYTECHNIC | W | 3-0 |
| 10/12 | at Stevens | W | 3-0 |
| 10/15 | at Stockton | W | 3-0 |
| 10/18 | at Kean | W | 3-0 |

| | | | |
|-------|---------------------|---|-----|
| 10/20 | at FDU-Madison | W | 3-0 |
| 10/27 | at John Jay | W | 3-0 |
| 10/29 | NY MARITIME | W | 2-0 |
| 10/29 | WESTERN CONNECTICUT | W | 2-0 |
| 11/1 | NYU | L | 1-3 |
| 11/2 | vs. NYU (at ECAC) | L | 0-3 |

Coach: Dave DeNure

1989 (15-17)

| | | | |
|-------|---|---|-----|
| 9/13 | MT ST. VINCENT# | W | 3-0 |
| 9/14 | at Montclair | W | 3-0 |
| 9/16 | Stockton State Tournament | | |
| 9/16 | vs. Montclair State (at Stockton) | W | 2-1 |
| 9/16 | vs. Stevens (at Stockton) | W | 2-1 |
| 9/16 | at Stockton State | L | 1-2 |
| 9/20 | HUNTER | L | 2-3 |
| 9/21 | at Rutgers-Newark | L | 0-3 |
| 9/27 | at Centenary* | W | 3-1 |
| 9/28 | RAMAPO* | W | 3-1 |
| 9/30 | ST. ELIZABETH* | W | 2-0 |
| 9/30 | BARUCH | W | 2-0 |
| 9/30 | RUTGERS-NEWARK | L | 0-2 |
| 9/30 | HUNTER | L | 0-2 |
| 10/4 | ST. ELIZABETH* | W | 3-0 |
| 10/5 | Jersey City State (at William Paterson) | L | 1-2 |
| 10/5 | at William Paterson | L | 1-2 |
| 10/5 | vs. Jersey City State | W | 2-0 |
| 10/7 | Rutgers-Newark Tournament | | |
| 10/7 | vs. Ramapo | L | 0-2 |
| 10/7 | vs. Kean | L | 0-2 |
| 10/7 | vs. Stockton State | W | 2-0 |
| 10/10 | at New York Polytechnic# | W | 3-0 |
| 10/11 | STEVENS#* | W | 3-0 |
| 10/18 | KEAN | L | 2-3 |
| 10/23 | UPSALA* | L | 1-3 |
| 10/25 | vs. New York Maritime* | L | 2-3 |
| 10/25 | at Western Connecticut# | L | 0-3 |
| 10/26 | JOHN JAY | W | 3-0 |
| 10/28 | Albany Tournament | | |
| 10/28 | at SUNY Albany | L | 0-2 |
| 10/28 | vs. Keuka | L | 0-2 |
| 10/28 | vs. Rutgers-Newark | L | 0-2 |
| 10/28 | vs. Vassar | L | 0-2 |
| 10/31 | at Baruch | W | 3-0 |
| 11/1 | at New York University | L | 1-3 |

IAC matches

* WAC matches

Coach: Dave DeNure

1990 (23-12)

| | | | |
|------|-----------------|---|-----|
| 9/15 | Delaware Valley | W | 2-0 |
| 9/15 | Goucher | W | 2-0 |
| 9/15 | Montclair State | W | 2-0 |
| 9/15 | Norte Dame | W | 2-0 |
| 9/15 | Stockton State | L | 0-2 |
| 9/19 | NYU | L | 2-3 |
| 9/20 | Rutgers-Newark | W | 3-0 |
| 9/27 | Centenary | W | 3-0 |
| 9/30 | Centenary | W | 2-0 |
| 9/30 | Caldwell | W | 2-0 |

| | | | |
|-------|---------------------|---|-----|
| 9/30 | FDU | W | 2-0 |
| 9/30 | Upsala | W | 2-0 |
| 10/3 | St. Elizabeth | W | 3-0 |
| 10/4 | William Paterson | L | 1-3 |
| 10/6 | Upsala | W | 2-0 |
| 10/6 | Ramapo | W | 2-1 |
| 10/6 | Stockton State | W | 2-0 |
| 10/6 | Kean | L | 1-2 |
| 10/10 | Mt. St. Mary | W | 3-1 |
| 10/11 | Stevens | W | 3-0 |
| 10/11 | Kean | L | 1-3 |
| 10/16 | Upsala | W | 3-1 |
| 10/18 | FDU-Madison | W | 3-0 |
| 10/20 | NY Maritime | W | 3-1 |
| 10/20 | Western Connecticut | L | 1-2 |
| 10/22 | Hunter | L | 0-3 |
| 10/24 | Mt. St. Vincent | W | 3-0 |
| 10/27 | Stevens | W | 2-0 |
| 10/27 | Upsala | L | 1-2 |
| 10/27 | FDU-Madison | L | 0-2 |
| 10/31 | Montclair State | W | 3-1 |
| 11/3 | Polytechnic | W | 3-0 |
| 11/8 | Ramapo | W | 2-1 |
| 11/8 | Upsala | L | 1-2 |

Coach: Dave DeNure

1991 (10-16)

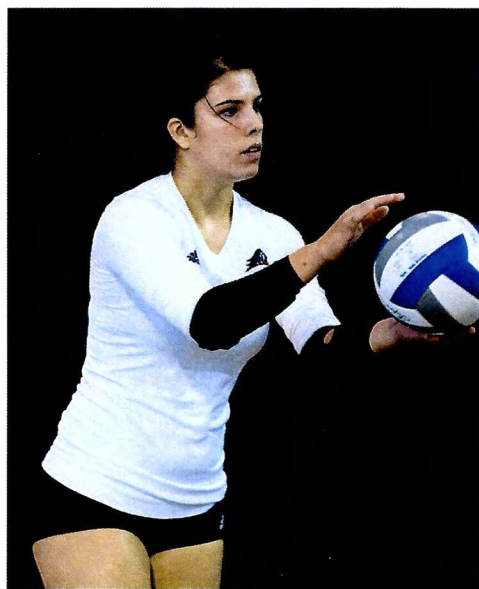
| | | | |
|-------|-----------------------------|---|-----|
| 9/14 | Stockton State Tournament | | |
| 9/14 | vs. Goucher | L | 0-2 |
| 9/14 | vs. Staten Island | W | 2-1 |
| 9/14 | at Stockton State | L | 0-2 |
| 9/18 | at Rutgers-Newark | L | 0-3 |
| 9/19 | HUNTER | L | 0-3 |
| 9/24 | PRATT | W | 3-1 |
| 9/25 | at Mt. St. Mary | L | 1-3 |
| 9/29 | Jersey "9" Tournament | | |
| 9/29 | vs. Bloomfield | W | 2-0 |
| 9/29 | vs. FDU-Madison | L | 0-2 |
| 9/29 | vs. Upsala | L | 0-2 |
| 10/2 | at Bard* | L | 0-3 |
| 10/3 | RAMAPO# | W | 3-0 |
| 10/9 | ST. ELIZABETH# | W | 3-0 |
| 10/10 | KEAN | L | 0-3 |
| 10/12 | at Centenary# | W | 3-2 |
| 10/16 | at Stevens*# | L | 1-3 |
| 10/22 | UPSALA# | L | 0-3 |
| 10/23 | MT. ST. VINCENT* | W | 3-1 |
| 10/24 | at FDU-Madison# | L | 0-3 |
| 10/26 | at Polytechnic* | W | 3-0 |
| 10/29 | WILLIAM PATERSON | L | 0-3 |
| 10/30 | at Montclair State | L | 0-3 |
| 11/3 | WAC Tournament (at Stevens) | | |
| 11/3 | vs. Centenary& | W | 2-0 |
| 11/3 | vs. Ramapo& | W | 2-1 |
| 11/3 | vs. FDU-Madison& | L | 1-2 |
| 11/3 | vs. Upsala | L | 0-3 |

*Independent Athletic Conference

#WAC matches

&WAC Tournament

Coach: Dave DeNure



Emily Krachenfels

1992 (8-12)

| | | | |
|---------------------------|------------------------|-----------|-----|
| 9/9 | Stockton Tournament | 5th place | |
| | vs. Staten Island | L | 1-2 |
| | at Stockton | L | 0-2 |
| | vs. Montclair State | W | 2-1 |
| 9/14 | MONTCLAIR STATE | W | 3-2 |
| 9/17 | at Hunter | L | 1-3 |
| 9/23 | MT. ST. MARY* | | |
| 9/24 | RUTGERS-NEWARK | L | 1-3 |
| 9/27 | Jersey "9" Tournament | 4th place | |
| | vs. Upsala | L | 0-2 |
| | vs. FDU-Madison | L | 0-2 |
| | vs. Centenary | W | 2-0 |
| | vs. Stevens Tech | W | 2-1 |
| 9/30 | BARD# | cancelled | |
| 10/1 | at Ramapo | W | 3-2 |
| 10/7 | at St. Elizabeth | L | 2-3 |
| 10/8 | at Kean | L | 0-3 |
| 10/10 | CENTENARY* | | |
| 10/13 | at Mt. St. Vincent# | W | 3-0 |
| 10/14 | STEVENS TECH# | L | 1-3 |
| 10/16 | at Jersey City State | L | 0-3 |
| 10/17 | CENTENARY | postponed | |
| 10/20 | at Upsala* | L | 0-3 |
| 10/21 | MT. ST. MARY | cancelled | |
| 10/22 | FDU-MADISON | W | 3-0 |
| 10/24 | POLYTECHNIC# | W | 3-0 |
| 10/25 | WIAC Tournament | 2nd place | |
| 10/29 | CENTENARY | L | 0-3 |
| 10/31 | vs. Vassar (at Marist) | | |
| 10/31 | at Marist | | |
| Coach: Kerry Keith | | | |

1993 (7-20)

| | | | |
|-------|--------------------------------------|-----------|-----|
| 9/11 | Stockton State Volleyball Tournament | | |
| 9/11 | at Stockton State | L | 0-2 |
| 9/11 | vs. Goucher (at Stockton) | L | 0-2 |
| 9/11 | vs. Montclair State (at Stockton) | L | 0-2 |
| 9/11 | vs. Ramapo (at Stockton) | L | 0-2 |
| 9/13 | at William Paterson | L | 0-3 |
| 9/15 | HUNTER | L | 0-3 |
| 9/22 | MT. ST. MARY** | L | 0-3 |
| 9/23 | at Rutgers-Newark | L | 0-3 |
| 9/26 | Jersey "9" Volleyball Tournament | | |
| 9/26 | vs. Centenary (NJ) | W | 2-0 |
| 9/26 | vs. Bloomfield | L | 0-2 |
| 9/26 | vs. FDU-Madison | W | 2-1 |
| 9/26 | vs. Stevens | L | 0-2 |
| 9/28 | vs. FDU-Madison** | L | 0-3 |
| 10/1 | RAMAPO** | L | 0-3 |
| 10/2 | at Bard* | L | 1-3 |
| 10/6 | ST. ELIZABETH | W | 3-0 |
| 10/7 | KEAN | L | 0-3 |
| 10/12 | MT. ST. VINCENT | L | 1-3 |
| 10/13 | at Stevens** | L | 0-3 |
| 10/15 | JERSEY CITY STATE | L | 0-3 |
| 10/21 | at Montclair State | L | 0-3 |
| 10/22 | at Centenary ** | W | 3-0 |
| 10/24 | WIAC Tournament | 3rd place | |
| 10/24 | vs. Mt. St. Mary | W | 2-0 |
| 10/24 | vs. Ramapo | W | 2-1 |
| 10/24 | vs. Stevens | L | 0-2 |

| | | | |
|------------------------|-----------------|---|-----|
| 10/24 | vs. FDU-Madison | L | 1-2 |
| * IAC matches | | | |
| ** WIAC matches | | | |
| Coach: Bob Ford | | | |

**1996
No team**

**1997
No team**

2000 (0-16)

| | | | |
|-------|--------------------|---|-----|
| 9/13 | at Bloomfield | L | 0-3 |
| 9/19 | DOMINICAN | L | 0-3 |
| 9/20 | TEIKYO POST | L | 0-3 |
| 9/23 | at USP | L | 0-3 |
| 9/23 | vs. Nyack | L | 2-3 |
| 9/29 | at Dominican | L | 0-3 |
| 10/4 | at Teikyo Post | L | 0-3 |
| 10/6 | ST. ELIZABETH | L | 1-3 |
| 10/7 | at Wilmington (DE) | L | 0-3 |
| 10/7 | vs. Nyack | L | 0-3 |
| 10/11 | at Staten Island | L | 0-3 |
| 10/14 | USP | L | 0-3 |
| 10/14 | BLOOMFIELD | L | 0-3 |
| 10/15 | at Goldey-Beacom | L | 0-3 |
| 10/22 | WILMINGTON (DE) | L | 0-3 |
| 10/27 | GOLDEY-BEACOM | L | 0-3 |

2001 (0-20)

| | | | |
|-------|---------------------|---|-----|
| 9/18 | DOMINICAN (NY)* | L | 0-3 |
| 9/20 | at Concordia (NY) | L | 0-3 |
| 9/22 | vs. Nyack* | L | 0-3 |
| 9/22 | at USP* | L | 0-3 |
| 9/23 | at Teikyo Post* | L | 0-3 |
| 9/27 | at Nyack* | L | 0-3 |
| 9/29 | at Goldey-Beacom* | L | 0-3 |
| 10/4 | at Dominican (NY)* | L | 0-3 |
| 10/5 | vs. Rowan! | L | 0-3 |
| 10/5 | vs. Springfield! | L | 0-3 |
| 10/6 | vs. Rutgers-Camden! | L | 0-3 |
| 10/6 | TEIKYO POST* | L | 0-3 |
| 10/6 | WILMINGTON (DE)* | L | 0-3 |
| 10/11 | GOLDEY-BEACOM* | L | 0-3 |
| 10/13 | at East Stroudsburg | L | 0-3 |
| 10/14 | at Wilmington (DE)* | L | 0-3 |
| 10/21 | USP* | L | 0-3 |
| 10/21 | BLOOMFIELD* | L | 0-3 |
| 10/23 | at Bloomfield* | L | 0-3 |
| 10/25 | RUTGERS-NEWARK | L | 0-3 |

! Golden Dome Invitational at Rutgers-Newark
***CACC Matches (0-14)**
Coach: Anthony Valbrun

2002 (0-18)

| | | | |
|------|--------------------|---|-----|
| 9/10 | GEORGIAN COURT* | L | 0-3 |
| 9/14 | at Bloomfield* | L | 0-3 |
| 9/14 | vs. USP* | L | 0-3 |
| 9/17 | at Dominican (NY)* | L | 0-3 |
| 9/21 | USP* | L | 0-3 |
| 9/21 | NYACK* | L | 0-3 |
| 9/24 | TEIKYO POST* | L | 0-3 |



Tess Albyn

| | | | |
|-------|----------------------|---|-----|
| 9/26 | at Nyack* | L | 0-3 |
| 9/28 | at Goldey-Beacom* | L | 0-3 |
| 10/3 | DOMINICAN (NY)* | L | 0-3 |
| 10/5 | at Teikyo Post* | L | 0-3 |
| 10/5 | vs. Wilmington (DE)* | L | 0-3 |
| 10/10 | GOLDEY-BEACOM* | L | 0-3 |
| 10/12 | WILMINGTON (DE)* | L | 0-3 |
| 10/17 | at Georgian Court* | L | 0-3 |
| 10/19 | vs. Merrimack | L | 0-3 |
| 10/19 | at Adelphi | L | 0-3 |
| 10/22 | BLOOMFIELD* | L | 0-3 |

***CACC Matches (0-16)**
Coach: Anthony Valbrun

2003 (0-21)

| | | | |
|-------|---------------------|---|-----|
| 9/9 | at Georgian Court* | L | 0-3 |
| 9/11 | BRIDGEPORT | L | 0-3 |
| 9/13 | vs. USP * | L | 0-3 |
| 9/13 | at Bloomfield* | L | 0-3 |
| 9/16 | DOMINICAN (NY)* | L | 0-3 |
| 9/20 | at Nyack* | L | 0-3 |
| 9/23 | at Teikyo Post* | L | 0-3 |
| 9/25 | NYACK* | L | 0-3 |
| 9/27 | at Goldey-Beacom* | L | 0-3 |
| 9/27 | vs. Holy Family* | L | 0-3 |
| 10/1 | at Dominican (NY)* | L | 0-3 |
| 10/4 | WILMINGTON (DE)* | L | 0-3 |
| 10/4 | TEIKYO POST* | L | 0-3 |
| 10/9 | GOLDEY-BEACOM* | L | 0-3 |
| 10/11 | at Wilmington (DE)* | L | 0-3 |
| 10/14 | at Holy Family* | L | 0-3 |
| 10/16 | GEORGIAN COURT* | L | 0-3 |
| 10/21 | BLOOMFIELD* | L | 0-3 |
| 10/27 | MOLLOY | L | 0-3 |
| 10/29 | SAINT ROSE | L | 0-3 |

***CACC Matches (0-18)**
Coach: Pavlina Klimova

Year-by-Year

2004 (13-13)

| | | | |
|-------|----------------------|---|-----|
| 9/8 | at Queens (NY) | L | 0-3 |
| 9/11 | at USP* | L | 0-3 |
| 9/16 | at Felician* | W | 3-0 |
| 9/18 | NYACK* | W | 3-1 |
| 9/18 | USP* | W | 3-1 |
| 9/21 | TEIKYO POST* | L | 1-3 |
| 9/23 | at Nyack* | W | 3-0 |
| 9/25 | GOLDEY-BEACOM* | W | 3-0 |
| 9/28 | FELICIAN* | W | 3-0 |
| 9/30 | DOMINICAN (NY)* | W | 3-2 |
| 10/2 | at Teikyo Post* | L | 0-3 |
| 10/2 | vs. Wilmington (DE)* | L | 0-3 |
| 10/9 | WILMINGTON (DE)* | L | 0-3 |
| 10/12 | at Holy Family* | W | 3-1 |
| 10/14 | at Georgian Court* | W | 3-1 |
| 10/16 | at Molloy | L | 2-3 |
| 10/19 | at Bloomfield* | W | 3-2 |
| 10/23 | at Goldey-Beacom* | L | 0-3 |
| 10/23 | vs. Delaware State | L | 0-3 |
| 11/1 | at Concordia (NY) | L | 0-3 |
| 11/4 | at Dominican (NY)* | L | 0-3 |
| 11/6 | GEORGIAN COURT* | W | 3-1 |
| 11/9 | at USP* | W | 3-1 |
| 11/12 | vs. Wilmington (DE)* | L | 0-3 |

*CACC Matches (12-18)

*CACC Tournament

Coach: Pavlina Klimova

2005 (8-20)

| | | | |
|-------|-------------------------------------|---|-----|
| 8/27 | vs. Daemen (at Shippensburg) | L | 1-3 |
| 8/27 | vs. Slippery Rock (at Shippensburg) | L | 0-3 |
| 8/28 | vs. Clarion (at Shippensburg) | L | 0-3 |
| 8/28 | at Shippensburg | L | 0-3 |
| 9/6 | CW POST | L | 1-3 |
| 9/10 | at Philadelphia | L | 1-3 |
| 9/10 | vs. Felician (at Philadelphia) | W | 3-0 |
| 9/17 | at USP | L | 1-3 |
| 9/17 | vs. Dominican (NY) (at USP) | L | 2-3 |
| 9/21 | HOLY FAMILY | L | 2-3 |
| 9/24 | vs. Holy Family (at Dominican (NY)) | W | 3-0 |
| 9/24 | at Dominican (NY) | L | 2-3 |
| 9/27 | PHILADELPHIA | L | 2-3 |
| 9/29 | at Bloomfield | L | 1-3 |
| 10/1 | vs. Bloomfield (at Wilmington (DE)) | W | 3-0 |
| 10/4 | at Post | L | 1-3 |
| 10/7 | at Georgian Court | L | 1-3 |
| 10/12 | WILMINGTON (DE) | | |
| 10/15 | GOLDEY-BEACOM | W | 3-1 |
| 10/18 | NYACK | W | 3-0 |
| 10/22 | vs. Goldey-Beacom (at Post, CT) | L | 1-3 |
| 10/22 | at Post (CT) | L | 1-3 |
| 10/26 | CONCORDIA (NY) | L | 0-3 |
| 10/28 | QUEENS (NY) | L | 2-3 |
| 11/2 | at USP | L | 0-3 |
| 11/5 | NYACK | W | 3-0 |
| 11/5 | FELICIAN | W | 3-0 |

Coach: Ryan McNeil

2006 (10-21)

| | | | |
|------|---------------------------|---|-----|
| 8/25 | vs. St. Peter's (at Army) | L | 1-3 |
| 8/26 | at Army | L | 0-3 |
| 9/1 | vs. Manhattan (at Howard) | W | 3-0 |



Alyssa Armada

| | | | |
|-------|---|---|-----|
| 9/2 | vs. American (at Howard) | L | 0-3 |
| 9/2 | at Howard | W | 3-0 |
| 9/6 | at LIU | L | 0-3 |
| 9/8 | at Columbia | L | 0-3 |
| 9/9 | vs. Hofstra (at Columbia) | L | 0-3 |
| 9/9 | vs. Hartford (at Columbia) | L | 1-3 |
| 9/15 | at Fordham | L | 0-3 |
| 9/15 | vs. St. Peter's (at Fordham) | W | 3-0 |
| 9/16 | vs. Maine (at Fordham) | L | 0-3 |
| 9/16 | vs. Tulsa (at Fordham) | L | 0-3 |
| 9/21 | SAN FRANCISCO | L | 0-3 |
| 9/29 | vs. Robert Morris (at Dartmouth) | L | 0-3 |
| 9/30 | at Dartmouth | L | 0-3 |
| 9/30 | vs. Harvard (at Dartmouth) | L | 0-3 |
| 10/3 | QUINNIPIAC | W | 3-0 |
| 10/4 | at Lafayette | L | 1-3 |
| 10/7 | at Fairleigh Dickinson | L | 1-3 |
| 10/7 | vs. Wagner (at Fairleigh Dickinson) | W | 3-0 |
| 10/11 | ARMY | L | 0-3 |
| 10/20 | vs. Winston-Salem State (at Delaware State) | W | 3-0 |
| 10/21 | at Delaware State | L | 1-3 |
| 10/21 | vs. Providence (at Delaware State) | L | 1-3 |
| 10/25 | WAGNER | W | 3-0 |
| 10/27 | at Central Connecticut State | L | 0-3 |
| 11/1 | ST. FRANCIS (NY) | W | 3-0 |
| 11/4 | MARYLAND-EASTERN SHORE | L | 2-3 |
| 11/8 | MANHATTAN | W | 3-0 |
| 11/12 | at Sacred Heart | W | 3-0 |

First Division I season

Coach: Ryan McNeil

2007 (13-24)

| | | | |
|------|---|---|-----|
| 8/25 | at Central Connecticut State | L | 1-3 |
| 8/25 | vs. Saint Peter's (at C. Connecticut State) | L | 1-3 |
| 8/28 | at Army | L | 1-3 |
| 8/31 | at St. John's | L | 0-3 |
| 9/1 | vs. Virginia Tech (at St. John's) | L | 0-3 |
| 9/1 | vs. Fairfield (at St. John's) | L | 0-3 |

| | | | |
|-------|---|---|-----|
| 9/5 | at Seton Hall | L | 2-3 |
| 9/7 | at Navy | L | 1-3 |
| 9/8 | vs. C. Connecticut State (at Navy) | L | 2-3 |
| 9/8 | vs. Marist (at Navy) | W | 3-2 |
| 9/11 | LAFAYETTE | L | 2-3 |
| 9/14 | at Tulsa | L | 0-3 |
| 9/15 | vs. Grambling State (at Tulsa) | W | 3-0 |
| 9/15 | vs. North Texas (at Tulsa) | L | 0-3 |
| 9/18 | Morgan State | W | 3-0 |
| 9/21 | vs. Hartford (at Harvard) | W | 3-1 |
| 9/22 | vs. Dartmouth (at Harvard) | L | 0-3 |
| 9/22 | at Harvard | L | 1-3 |
| 9/26 | FAIRLEIGH DICKINSON | W | 3-0 |
| 9/28 | ST. FRANCIS (NY) | W | 3-0 |
| 9/28 | UTAH VALLEY | L | 1-3 |
| 9/29 | QUINNIPIAC | W | 3-0 |
| 9/29 | COLUMBIA | L | 2-3 |
| 10/10 | at UMBC | L | 1-3 |
| 10/12 | WAGNER | W | 3-1 |
| 10/14 | SAINT FRANCIS (PA) | L | 1-3 |
| 10/17 | at Morgan State | L | 0-3 |
| 10/26 | PROVIDENCE | W | 3-2 |
| 10/27 | HOWARD | W | 3-2 |
| 10/27 | SACRED HEART | W | 3-2 |
| 10/31 | at American | L | 0-3 |
| 11/2 | at Wagner | W | 3-0 |
| 11/7 | at Fairleigh Dickinson | L | 0-3 |
| 11/10 | DELAWARE STATE | W | 3-2 |
| 11/16 | vs. Chicago State (at Orem, UT) | L | 1-3 |
| 11/16 | vs. Cal State Bakersfield (at Orem, UT) | L | 0-3 |
| 11/17 | vs. Providence (at Orem, UT) | L | 0-3 |

Coach: Ryan McNeil

2008 (18-16)

| | | | |
|-------|-------------------------------------|---|-----|
| 8/29 | vs. Oral Roberts (at UTEP) | L | 0-3 |
| 8/30 | at University of Texas-EI Paso | L | 0-3 |
| 8/30 | vs. Butler (at UTEP) | L | 0-3 |
| 9/5 | at St. Francis (NY) | W | 3-0 |
| 9/9 | WAGNER | W | 3-0 |
| 9/12 | UMBC | L | 0-3 |
| 9/13 | LOYOLA (MD) | L | 2-3 |
| 9/13 | SACRED HEART | L | 0-3 |
| 9/17 | SETON HALL | W | 3-1 |
| 9/19 | vs. Columbia (at Saint Francis, PA) | L | 2-3 |
| 9/20 | at Saint Francis (PA) | W | 3-0 |
| 9/20 | vs. Akron (at Saint Francis, PA) | W | 3-2 |
| 9/24 | at Fairleigh Dickinson | W | 3-0 |
| 9/27 | at Quinnipiac | W | 3-0 |
| 9/27 | vs. Hartford (at Quinnipiac) | W | 3-0 |
| 9/28 | vs. Coppin State (at Quinnipiac) | W | 3-0 |
| 9/30 | at La Salle | W | 3-0 |
| 10/7 | LEHIGH | W | 3-1 |
| 10/8 | ARMY | L | 0-3 |
| 10/11 | at American | L | 2-3 |
| 10/14 | at Lafayette | W | 3-2 |
| 10/17 | at Sacred Heart | L | 0-3 |
| 10/22 | at Columbia | L | 1-3 |
| 10/28 | ST. FRANCIS (NY) | W | 3-0 |
| 10/31 | PROVIDENCE | W | 3-0 |
| 11/1 | BRYANT | W | 3-0 |
| 11/1 | HOWARD | W | 3-1 |
| 11/5 | at Wagner | W | 3-0 |
| 11/8 | at Delaware State | L | 2-3 |

| | | | |
|-------|--|---|-----|
| 11/12 | FAIRLEIGH DICKINSON | L | 2-3 |
| 11/21 | vs. Providence (at Utah Valley) | W | 3-0 |
| 11/21 | vs. Cal State Bakersfield (at Utah Valley) | L | 0-3 |
| 11/22 | at Utah Valley | L | 1-3 |
| 11/22 | Vs. Texas-Pan American (at Utah Valley) | L | 2-3 |

Coach: Ryan McNeil

2009 (17-11)

| | | | |
|-------|--|---|-----|
| 8/28 | at St. Francis (NY) | W | 3-0 |
| 8/29 | vs. Bucknell (at St. Francis, NY) | W | 3-0 |
| 8/29 | vs. Saint Peter's (at St. Francis, NY) | W | 3-0 |
| 9/2 | FAIRLEIGH DICKINSON | W | 3-1 |
| 9/4 | vs. Hartford (at CCSU) | W | 3-0 |
| 9/5 | at Central Connecticut State | W | 3-0 |
| 9/5 | vs. Manhattan (at CCSU) | W | 3-0 |
| 9/9 | SACRED HEART | W | 3-0 |
| 9/11 | vs. Virginia Tech (at American) | L | 0-3 |
| 9/12 | at American | L | 1-3 |
| 9/15 | COLUMBIA | W | 3-0 |
| 9/18 | at Seton Hall | L | 0-3 |
| 9/19 | vs. Yale (at Seton Hall) | L | 0-3 |
| 9/19 | vs. Hofstra (at Seton Hall) | L | 1-3 |
| 9/25 | vs. Texas-Pan American (at HBU)* | W | 3-0 |
| 9/26 | at Houston Baptist* | W | 3-1 |
| 10/3 | CHICAGO STATE* | W | 3-0 |
| 10/10 | UTAH VALLEY* | W | 3-2 |
| 10/14 | at Lafayette | W | 3-0 |
| 10/23 | at North Dakota* | L | 0-3 |
| 10/25 | at South Dakota* | L | 2-3 |
| 10/29 | HOUSTON BAPTIST* | W | 3-0 |
| 10/31 | TEXAS-PAN AMERICAN* | L | 1-3 |
| 11/5 | SOUTH DAKOTA* | W | 3-1 |
| 11/7 | NORTH DAKOTA* | L | 0-3 |
| 11/12 | at Utah Valley* | L | 1-3 |
| 11/14 | CHICAGO STATE* | W | 3-0 |
| 11/20 | HOUSTON BAPTIST# | L | 2-3 |

***Great West Conference matches**

#Great West Conference Tournament

Great West (7-5)

Coach: JR Martins



Mikalah Hughes

2010 (4-22)

| | | | |
|-------|--|---|-----|
| 8/27 | at St. Francis (NY) | L | 1-3 |
| 8/28 | vs. Saint Peter's (at St. Francis, NY) | W | 3-1 |
| 9/1 | at Fairleigh Dickinson | L | 1-3 |
| 9/4 | at Marist | L | 0-3 |
| 9/4 | vs. Holy Cross (at Marist) | L | 2-3 |
| 9/7 | RUTGERS | L | 0-3 |
| 9/10 | vs. Yale (at Long Island) | L | 0-3 |
| 9/11 | at Long Island | L | 0-3 |
| 9/11 | vs. Georgetown (at Long Island) | L | 1-3 |
| 9/16 | at Utah Valley* | L | 0-3 |
| 9/18 | at Chicago State* | W | 3-2 |
| 9/23 | TEXAS-PAN AMERICAN* | L | 0-3 |
| 9/25 | HOUSTON BAPTIST* | L | 0-3 |
| 10/2 | CHICAGO STATE* | W | 3-0 |
| 10/5 | at Lafayette | W | 3-1 |
| 10/7 | SETON HALL | L | 2-3 |
| 10/12 | at Hofstra | L | 0-3 |
| 10/14 | at Sacred Heart | L | 0-3 |
| 10/21 | NORTH DAKOTA* | L | 0-3 |
| 10/23 | SOUTH DAKOTA* | L | 2-3 |
| 10/28 | at Houston Baptist* | L | 0-3 |
| 10/30 | at Texas-Pan American* | L | 0-3 |
| 11/4 | at South Dakota* | L | 1-3 |
| 11/6 | at North Dakota* | L | 0-3 |
| 11/11 | UTAH VALLEY* | L | 0-3 |
| 11/19 | vs. South Dakota (at Chicago State) # | L | 1-3 |

***Great West Conference matches**

#Great West Conference Tournament

Great West (2-10)

Coach: JR Martins

2011(11-18)

| | | | |
|-------|---------------------------------|-----------|-----|
| 8/26 | at St. Francis (NY) | W | 3-0 |
| 8/27 | vs. Fordham (at St. Francis) | cancelled | |
| 8/27 | vs. Rider (at St. Francis) | cancelled | |
| 8/31 | at Rutgers | L | 1-3 |
| 9/2 | vs. Princeton (at Hofstra) | L | 1-3 |
| 9/3 | vs. Fairfield (at Hofstra) | L | 1-3 |
| 9/6 | LEHIGH | W | 3-2 |
| 9/9 | at Army | L | 1-3 |
| 9/9 | vs. Marist (at Army) | L | 0-3 |
| 9/11 | vs. Arkansas (at Army) | L | 0-3 |
| 9/11 | vs. Dartmouth (at Army) | W | 3-2 |
| 9/14 | FAIRLEIGH DICKINSON | L | 2-3 |
| 9/16 | at Seton Hall | L | 0-3 |
| 9/16 | vs. TCU (at Seton Hall) | L | 0-3 |
| 9/17 | vs. Boston College (Seton Hall) | L | 0-3 |
| 9/20 | LA SALLE | W | 3-0 |
| 9/22 | HOFSTRA | W | 3-2 |
| 9/29 | HOUSTON BAPTIST* | L | 1-3 |
| 10/1 | TEXAS-PAN AMERICAN* | W | 3-0 |
| 10/6 | at North Dakota* | L | 0-3 |
| 10/8 | at Utah Valley* | L | 0-3 |
| 10/15 | at Chicago State* | W | 3-2 |
| 10/20 | UTAH VALLEY* | L | 2-3 |
| 10/22 | NORTH DAKOTA* | L | 1-3 |
| 10/25 | LAFAYETTE | W | 3-0 |
| 10/27 | at Saint Peter's | W | 3-0 |
| 11/3 | at Texas-Pan American* | W | 3-2 |
| 11/5 | at Houston Baptist* | L | 0-3 |
| 11/12 | CHICAGO STATE | L | 2-3 |

| | | | |
|-------|--------------------------------|---|-----|
| 11/17 | vs. #5 Chicago State (at UND)# | W | 3-1 |
| 11/18 | vs. #1 Utah Valley (at UND)# | L | 0-3 |

***Great West Conference matches**

#Great West Conference Tournament

Great West (3-7)

Coach: JR Martins

2012 (12-16)

| | | | |
|-------|---|---|-----|
| 8/24 | vs. Maryland Eastern Shore (at St. Francis) | L | 1-3 |
| 8/24 | vs. Radford (at St. Francis) | L | 1-3 |
| 8/25 | at St. Francis Brooklyn | W | 3-2 |
| 8/29 | at Iona | L | 1-3 |
| 9/1 | MARIST | W | 3-1 |
| 9/1 | vs. Fordham (at Marist) | L | 2-3 |
| 9/2 | vs. Hartford (at Marist) | L | 1-3 |
| 9/7 | vs. Stony Brook (at Fordham) | W | 3-2 |
| 9/8 | vs. Cornell (at Fordham) | W | 3-2 |
| 9/8 | at Fordham | W | 3-1 |
| 9/12 | at Temple | L | 0-3 |
| 9/14 | at LIU | L | 1-3 |
| 9/15 | vs. Maryland (at LIU) | L | 0-3 |
| 9/15 | vs. St. John's (at LIU) | L | 0-3 |
| 9/19 | at Fairleigh Dickinson | W | 3-1 |
| 9/27 | HOUSTON BAPTIST* | L | 1-3 |
| 9/29 | TEXAS-PAN AMERICAN* | L | 1-3 |
| 10/2 | SAINT PETER'S | W | 3-0 |
| 10/6 | at Chicago State* | W | 3-0 |
| 10/13 | at Utah Valley* | L | 2-3 |
| 10/16 | at La Salle | L | 2-3 |
| 10/23 | at Lafayette | W | 3-2 |
| 10/27 | CHICAGO STATE* | W | 3-0 |
| 11/4 | at Houston Baptist* | L | 0-3 |
| 11/5 | at Texas-Pan American* | W | 3-2 |
| 11/8 | UTAH VALLEY* | L | 1-3 |
| 11/16 | Chicago State (at Utah Valley)# | W | 3-0 |
| 11/16 | Houston Baptist (at Utah Valley)# | L | 1-3 |

***Great West Conference matches**

#Great West Conference Tournament

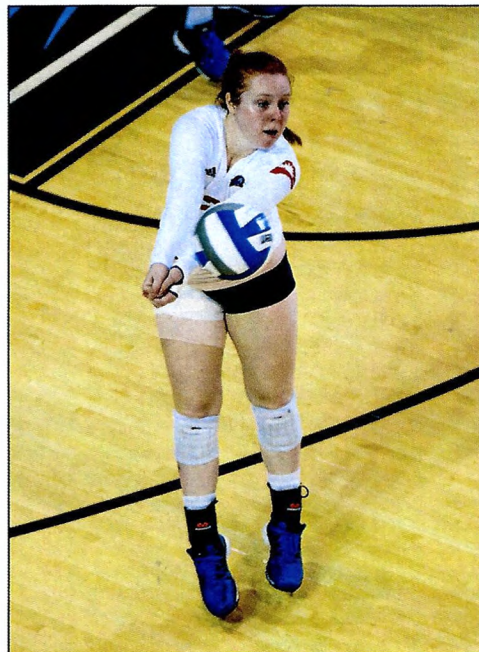
Great West (3-5)

Coach: JR Martins

2013 (7-15)

| | | | |
|-------|--------------------------------------|---|-----|
| 9/4 | SAINT PETER'S | W | 3-0 |
| 9/6 | at St. Francis Brooklyn | L | 0-3 |
| 9/7 | vs. Howard (at St. Francis Brooklyn) | L | 0-3 |
| 9/7 | vs. Rider (at St. Francis Brooklyn) | L | 0-3 |
| 9/11 | TEMPLE | L | 2-3 |
| 9/13 | at UMBC | L | 0-3 |
| 9/14 | vs. Loyola (at UMBC) | W | 3-1 |
| 9/14 | vs. Howard (at UMBC) | L | 1-3 |
| 9/18 | at Fairleigh Dickinson | L | 2-3 |
| 9/20 | vs. Fordham (at CCSU) | L | 0-3 |
| 9/21 | at Central Connecticut State | L | 1-3 |
| 9/21 | vs. Hartford (at CCSU) | L | 1-3 |
| 9/25 | at La Salle | W | 3-0 |
| 10/2 | ST. FRANCIS BROOKLYN | W | 3-0 |
| 10/4 | LAFAYETTE | W | 3-2 |
| 10/9 | at Saint Peter's | W | 3-0 |
| 10/16 | at Manhattan | W | 3-2 |
| 10/19 | at Lehigh | L | 0-3 |
| 10/30 | SETON HALL | L | 1-3 |
| 11/3 | FAIRLEIGH DICKINSON | L | 1-3 |

Year-by-Year



Olivia Welsch

| | | | |
|-------|-----------------|---|-----|
| 11/8 | at Coppin State | L | 1-3 |
| 11/14 | IONA | L | 0-3 |

Coach: JR Martins

2014 (13-22)

| | | | |
|--|-------------------------|---|-----|
| <i>2014 La Salle Invitational</i> | | | |
| 8/29 | vs. Coppin State | L | 0-3 |
| | at La Salle | W | 3-1 |
| 8/30 | vs. Manhattan | L | 0-3 |
| | vs. Loyola (MD) | W | 3-1 |
| 9/3 | SAINT PETER'S | W | 3-0 |
| <i>St. Francis Brooklyn Terrier Invitational</i> | | | |
| 9/5 | at St. Francis Brooklyn | L | 0-3 |
| 9/6 | vs. Manhattan | L | 1-3 |
| | vs. Hofstra | L | 0-3 |
| <i>Rhode Island Tournament</i> | | | |
| 9/12 | at Rhode Island | L | 0-3 |
| | vs. Rutgers | L | 0-3 |
| 9/13 | vs. Cincinnati | L | 0-3 |
| 9/17 | at Fairleigh Dickinson | W | 3-1 |
| <i>CCSU Blue Devil Invitational</i> | | | |
| 9/19 | vs. Providence | L | 2-3 |
| 9/20 | vs. Hartford | L | 1-3 |
| | at CCSU | L | 0-3 |
| 9/27 | at UMass Lowell | L | 1-3 |
| 9/28 | at New Hampshire | L | 0-3 |
| 10/1 | at Lafayette | W | 3-0 |
| 10/3 | at Delaware State | W | 3-0 |
| 10/8 | at Saint Peter's | L | 1-3 |
| 10/11 | ROBERT MORRIS | L | 2-3 |
| 10/15 | at Army | L | 0-3 |
| 10/18 | LEHIGH | L | 0-3 |
| 10/21 | IONA | W | 3-2 |
| 10/24 | DELAWARE STATE | W | 3-0 |
| 10/29 | at Rider | L | 0-3 |
| 10/31 | HAMPTON | L | 0-3 |

| | | | |
|--------------------------------|-----------------------------|---|-----|
| 11/5 | FAIRLEIGH DICKINSON | W | 3-1 |
| 11/7 | COPPIN STATE (Senior Night) | W | 3-1 |
| 11/14 | HOWARD | W | 3-0 |
| 11/15 | at Bucknell | L | 0-3 |
| <i>Grand Canyon Tournament</i> | | | |
| 11/21 | vs. Nebraska at Omaha | L | 1-3 |
| | vs. Incarnate Word | W | 3-1 |
| 11/22 | vs. UMass Lowell | W | 3-0 |
| | at Grand Canyon | L | 2-3 |

Coach: Peter Volkert

2015 (6-25)

| | | | |
|--|--------------------------|-----------|-----|
| <i>CCSU Blue Devil Invitational</i> | | | |
| 8/28 | vs. Bucknell | L | 0-3 |
| 8/29 | vs. Fairfield | L | 0-3 |
| | at CCSU | L | 0-3 |
| <i>St. Francis Brooklyn Terrier Invitational</i> | | | |
| 9/4 | vs. Valparaiso | L | 0-3 |
| 9/5 | at St. Francis Brooklyn | W | 3-1 |
| | vs. Rider | W | 3-1 |
| <i>Columbia Invitational</i> | | | |
| 9/11 | at Columbia | L | 0-3 |
| 9/12 | vs. American | L | 0-3 |
| | vs. Northeastern | L | 1-3 |
| <i>Lafayette Tournament</i> | | | |
| 9/18 | vs. St. Francis Brooklyn | W | 3-2 |
| | vs. Rider | W | 3-2 |
| 9/19 | Lafayette | L | 0-3 |
| 9/23 | at Marist | L | 0-3 |
| 9/25 | LIPSCOMB* | L | 0-3 |
| 9/26 | PENN* | L | 0-3 |
| 9/30 | at Saint Peter's | L | 2-3 |
| 10/2 | FLORIDA GULF COAST* | L | 0-3 |
| 10/4 | STETSON* | W | 3-1 |
| 10/9 | at Jacksonville* | L | 2-3 |
| 10/10 | at North Florida* | L | 0-3 |
| 10/14 | SAINT PETER'S | W | 3-0 |
| 10/16 | KENNESAW STATE* | L | 0-3 |
| 10/18 | USC UPSTATE* | L | 0-3 |
| 10/24 | at Lipscomb* | L | 0-3 |
| 10/28 | FAIRLEIGH DICKINSON | cancelled | |
| 10/30 | at Kennesaw State* | L | 0-3 |
| 10/31 | at USC Upstate* | L | 0-3 |
| 11/4 | MANHATTAN | L | 0-3 |
| 11/6 | NORTH FLORIDA* | L | 0-3 |
| 11/8 | JACKSONVILLE* | L | 0-3 |
| 11/14 | at Florida Gulf Coast* | L | 0-3 |
| 11/15 | at Stetson* | L | 0-3 |

Head Coach: Peter Volkert

2016 (11-22)

| | | | |
|-------------------------------------|-------------------------|---|-----|
| <i>La Salle Tournament</i> | | | |
| 8/26 | vs. Saint Francis U | W | 3-0 |
| | vs. Morgan State | W | 3-1 |
| 8/27 | vs. Quinnipiac | L | 1-3 |
| | at La Salle | L | 0-3 |
| <i>Terrier/Fordham Invitational</i> | | | |
| 9/2 | vs. Quinnipiac | L | 0-3 |
| 9/3 | at Fordham | W | 3-2 |
| | at St. Francis Brooklyn | W | 3-0 |
| <i>LIU Brooklyn Tournament</i> | | | |
| 9/10 | at LIU Brooklyn | L | 1-3 |
| 9/11 | vs. Denver | L | 0-3 |
| | at LIU Brooklyn | L | 0-3 |

| | | | |
|-----------------------------|--------------------------|---|-----|
| 9/13 | SAINT PETER'S | W | 3-1 |
| <i>Lafayette Tournament</i> | | | |
| 9/16 | at Lafayette | W | 3-1 |
| 9/17 | vs. St. Francis Brooklyn | W | 3-2 |
| | vs. Manhattan | L | 1-3 |
| 9/20 | at Saint Peter's | W | 3-0 |
| 9/24 | at USC Upstate* | L | 2-3 |
| 9/27 | at Iona | L | 0-3 |
| 9/30 | at FGCU* | L | 0-3 |
| 10/1 | at Stetson* | L | 0-3 |
| 10/7 | JACKSONVILLE* | L | 1-3 |
| 10/9 | NORTH FLORIDA* | L | 0-3 |
| 10/14 | at Lipscomb* | L | 0-3 |
| 10/15 | at Kennesaw State* | L | 0-3 |
| 10/19 | at Fairleigh Dickinson | L | 0-3 |
| 10/22 | USC UPSTATE* | W | 3-1 |
| 10/23 | MARIST | L | 1-3 |
| 10/28 | KENNESAW STATE* | L | 1-3 |
| 10/30 | LIPSCOMB* | L | 0-3 |
| 11/4 | at North Florida* | L | 0-3 |
| 11/5 | at Jacksonville* | L | 0-3 |
| 11/8 | at Delaware State* | W | 3-0 |
| 11/11 | STETSON* | W | 3-2 |
| 11/13 | FGCU* | L | 0-3 |

***ASUN Matches (2-12)**

Head Coach: Peter Volkert

All-Time Varsity Roster

(First Season: 1996; complete thru 2015)

A

APPLEBY, Emma 00,01,02,03
ALBERTI, Ashley 11
ALBYN, Tess 14, 15, 16
ALMAGRO, Sandy 99
ALVARADO, Karla 91,92,93,94
ALVAREZ, Mildred 92
ARMADA, Alyssa 14, 15, 16
ARAUJO, Juliana 08, 09, 10, 11

B

BABY, Sabrina 06, 07, 08, 09
BAEZ, Aliza 91
BAOSIC, Jovana 15
BARTLETT, Katie 10
BEGASSE, Eileen 83,84,85,88
BENSON, Liz 16
BERNAL, Marelis 03
BERROA, Beverly 99,00,02
BROWN, Jessica 87
BUTENSKY, Carisa 00,01
BORILCO, Anna 98
BOYADJIS, Theodora 04
BYNOE, Adrienne 16

C

CACERAS, Sandra 92,93,95
CAMEROTA, Laura 93
CARROLL, Valerie 10, 11, 12, 14
CASADO, Angie 04
CHANNER, Rene 95
CHIRINOS, Gladys 98
CHOI, R. 82
CHOY, Yvonne 94,95
COLOMBO, Julia 10, 11, 12, 13
CONTALDI, Natalie 85,86
CORSARO, Denise 85,86,88,89
CRAIG, Ashley 04, 05, 07
CRUZ, Iris 91

D

DAWSON, Marilyn 83,84,85,86
DECANDIA, Nicole 01
DELGADO, Paola 93

E

EDMONSON, Fran 12, 13, 14
ENG, Cathy 89,90,91,92

F

FERNANDEZ, Alana 99,00
FORTIER, Linda 85,86,87,88

FRANKLIN, Sylvia 88,90
FUKAZAWA, Ursula 87,88,89,90

G

GAO, Grace 13, 14, 15
GARBARINO, Mandy 14
GERTON, Katherine 12, 13, 14, 15
GILL, Victoria 07
GOLDRICK, Elizabeth 85,86,87,88
GOMEZ, Monica 98
GONZALEZ, Claudia 83,84
GONZALEZ, Yanet 87,88,89,90
GOSWICK, Katie 11, 12, 13, 14
GRADY, E. 82,83
GRUENEWALD, Wendy 95
GYURICZA, Emese 06

H

HAECKEL, Kristy 06, 07, 08, 09
HAMILTON, Heather 98
HAROLD, Lynn 85
HARRIS, Anneka 15, 16
HARTUNG, Heidi 82,83,84
HICKS, R. 82,83
HOOGERHYDE, Allison 05
HORNSTEIN, Katrina 06, 07, 08, 09
HUGHES, Baaba 07, 08, 09, 10
HUGHES, Mikalah 16

I

INGRAM, S. 82,83

J

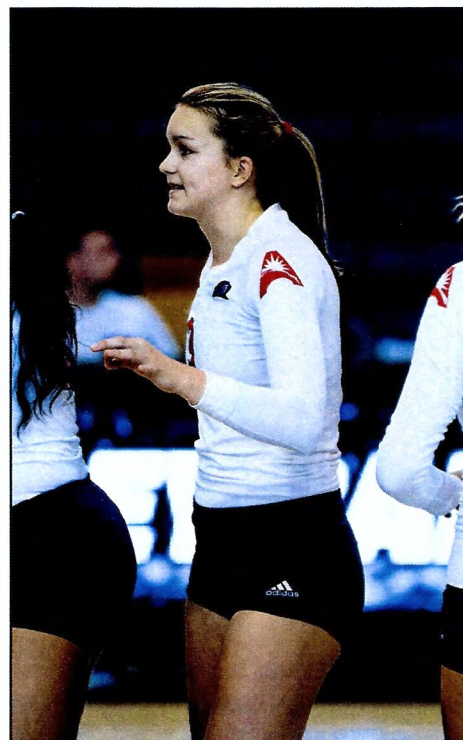
JANSSEN, Kat 14
JIMENEZ, Lenny 93,94,95
JIMENEZ, Vanessa 95
JOSEPH, Nikiesha 98,99,00,01

K

KASEM, Fatima 06
KING, Donna 91,92,93
KING, S. 82
KLOCEK, Katarzyna 16
KRACHENFELS, Emily 15, 16
KREHER, Elizabeth 04, 05
KRZEMINSKI, Connie 89,90,91,92
KULKARNI, Sita 03

L

LAGAN, Tara 90
LARA, Eliana 00,01,02
LEACOCK, Shani 14

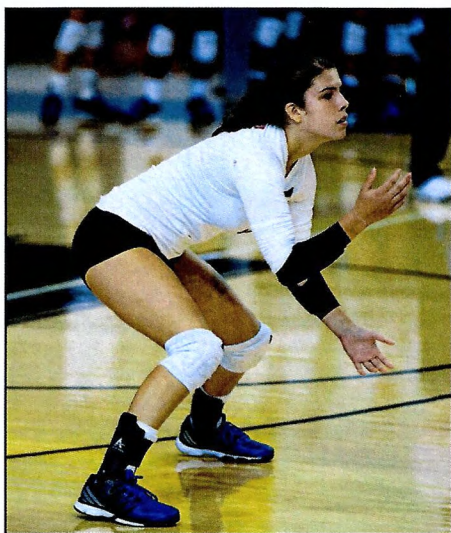


Tess Albyn

LEE, Diana 82,83,84
LEUNG, Cathy 10, 11, 12, 13
LEWIS, Katlyn 07
LIMA, Fernanda 09, 10, 11
LIU, Kathy 88,90,91,92
LOAYZA, Marcie 98,99,00
LOPEZ, Cindy 93,94,95
LORENZETTI, Lisa 92

M

MAHECHA, Luz 03
MARIN, Olga 87
MARQUES, Vanessa 14
MARTINEZ, Dolores 01,02,03,04
MASSEY, SchrKya 03
MAYS, Felicia 86,87,88,90
MCKENNA, A. 82
MCCABE, Kayleigh 13 14
MCNAIR, Tamara 95
MENDOZA, Charisma 99
MENESES, Michelle 92
MERCADO, Anna 09, 10, 11, 12
METTLE, Jane 05
MIRANDA, Becky 82,83,84
MONTFERRET, Jennifer 01
MUCHA, M. 82
MULLEN, Veronica 99



Emily Krachenfels

N

NAGY, K. 82
 NICOLAOU, Claire 85,86,87
NIETO, Adriana 15, 16
 NIETO, Diana 91,92,93,95

O

OCHS, Gina 86,87,88,90
 O'CONNOR, Kelly 89,90,91
 OPORSKA, Marta 01,03, 04, 05
 OSEGUERA, Gladis 13

P

PACHECO, Patricia 87,88,90
 PAGANO, Maria 85,86
 PAG, Song Sun 84,85
 PAPALEXIOU, Renuska 05
 PANDOLFO, Renata 08, 09, 11, 12
 PATEL, Sushreeta 95
 PERRU, Barbara 12
 PICHARDO, Carmen 94,95
 PINCAY, Maria 95
 POLANSKYJ, Odarka 83,84,85
 PONTON, Clara 93,94
 PRATT, Joanie 87,88,89,90
 PREGOWSKA, Agnieszka 05, 06, 07, 08
 PRERADOVICH, Chanelle 08, 09
 PROPSNER, J. 82,83

Q

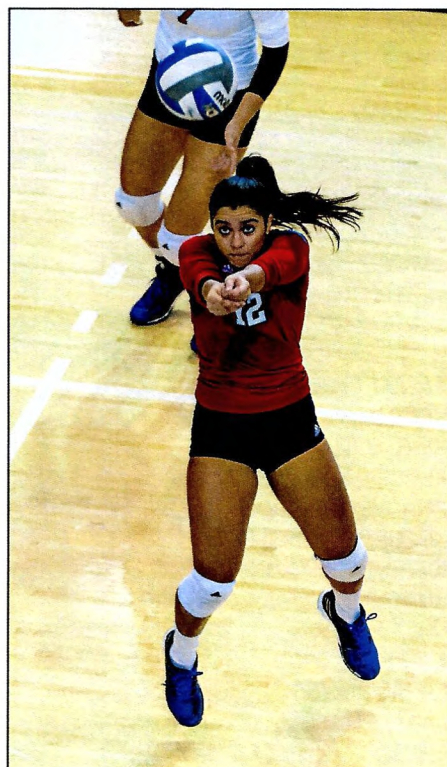
QUINTANILLA, Jackie 05
 QUINTERO, Veronica 03

R

RACHER, Sonia 86
 RATYCZ, Nadia 84
 RIOS, Tulia 88,89,90,92
 RIVERA, Erica 98
 RIVERA, H. 82
 ROBINSON, Sharae 03
 RODRIGUEZ, Anna 16
 ROJAS, Natalie 03
 ROJAS, S. 83
 RONQUILLO, R. 82,83
 RUSIN, Kasha 04, 05, 07
 RYGELIS, Regina 82,85,86

S

SANTOS, Catherine 02
 SAMMS, Chevanese 02
 SANTANA, Dennise 03
 SCHNEIDER, Cindy 84,85
 SCHULTZ, Erica 07, 08, 09
 SNEED, Brandy 01
 SNELL, Audrey 08, 09, 10, 11
 SNELL, Janet 09, 10, 11, 12



Adriana Nieto

T

TABOR, Erika 13
 TAI, Bonnie 92, 93, 94
 TALOCCO, Michelle 93, 94, 95
 TANRIKULU, Kubra 04, 06, 07
 THOMPSON, Danielle 05, 06, 07, 08
 TINARI, Camilla 11, 12, 13, 14
 TOMCZAK, Anna 99
 TRUCILLO, Gina 86,87,88,89

V

VARGAS, Sharon 01, 02
 VonKOENIG, Gretchen 10, 11, 12, 13
 VUKOTIC, Danica 12, 13, 14, 15
 VUKOTIC, Nina 12, 13, 14, 15

W

WALDBURGER, Stacy 00,01,02
 WASHINGTON, Lisa 86
WELSCH, Olivia 16
WIEZIK, Weronika 16
 WILKINSON, Rebecca 04, 06, 07
 WINCHESTER, Melsha 98,99
 WONG, Ileana 83,84
 WRONA, Edyta 89,90,91,92
 WYKA, Jacqueline 00,01

Z

ZACHER, Sonia 85,87,88
 ZIEMER, Carly 10

Returning players bold

Corrections welcome. Please contact Stephanie Pillari at pillari@njit.edu

NJIT Hall of Fame

| Name | Grad. Year | Contribution | Sport (s) | Years Active | Year of Induction | Name | Grad. Year | Contribution | Sport (s) | Years Active | Year of Induction |
|-----------------------------|------------|-----------------------|---|-------------------|-------------------|--------------------------|------------|-----------------------|---------------------------|-------------------|-------------------|
| BAKUN, Andrew I. | 1982 | Athlete/Asst. Coach | M-Soccer | 1978-81/ 90-91 | 2005 | IRIS, Herb | 1951 | Benefactor | -- | -- | 2007 |
| BAKUN, Myron | 1967 | Athlete | M-Soccer | 1964-66 | 1991 | KAMINSKY, Nicholas J. | 1978 | Athlete | Baseball | 1975-78 | 2006 |
| BARTH, Roland E. | 1960 | Athlete | M-Fencing | 1957-59 | 2009 | KASBARIAN, Raymond P. | 1966 | Founder/Athlete | Judo | 1962-66 | 1989 |
| BAUDER, Fred "Coach" | -- | Coach | M-Soccer | 1956-59 | | KETZNER, Robert Shelby | -- | Coach | Rifle | 1962-86 | 1987 |
| BLUM, Raymond E. | 1950 | Distinguished Alumnus | M-Basketball | 1932-61 | 1989 | KHOWAYLO, Alex | 1969 | Athlete | M-Soccer | 1960-63 | 1996 |
| BORJA, Hernan "Chico" | 1981 | Athlete | M-Basketball | 1932-61 | 1989 | LUBETKIN, Charles "Tudy" | 1953 | Athlete | M-Basketball/ M-Track | 1949-52 | 1994 |
| BORNAKO, Gregory "Egor" | 1970 | Athlete | Speedskating/ Cycling | -- | 1996 | LYNCH, Robert K. | 1984 | Athlete/Coach | M-Fencing | 1977-80/ 86-91 | 1993 |
| BOWSER, Hamilton V. | 1952 | Athlete | M-Soccer | 1977-80 | 1986 | MacDONALD, Dan | 1984 | Athlete | Baseball | 1981-84 | 1992 |
| BRADLEY, Thomas | 1978 | Athlete | M-Fencing | 1966-70 | 1987 | OLSEN, Richard J. | 1969 | Athlete | M-Basketball | 1965-69 | 1988 |
| BROWN, Andrew D. | 1963 | Athlete | M-Fencing | 1948-52 | 1989 | OLSON, George R. | 1977 | Athlete | Baseball | 1974-77 | 1987 |
| CRIMMINS, David | 1952 | Athlete | M-Swimming | 1974-78 | 1990 | PAULIUS, Raymond V. | 1985 | Athlete | Baseball | 1974-77 | 1987 |
| CRUZ, Edward | 1963 | Athlete | M-Soccer | 1956-59 | 2006 | RODGERS, Tarik | 1996 | Athlete | M-Soccer | 1980-83 | 2006 |
| DAWSON, Marilyn E. | 1986 | Athlete | M-Fencing | 1948-52 | 2007 | RODGERS, Warren | 1996 | Athlete | M-Volleyball | 1992-95 | 2010 |
| DeNICOLA, Carmine P. | 1978 | Athlete | M-Soccer | 1959-62 | 1995 | ROGERS, Warren | 1988 | Athlete | M-Basketball | 1983-87 | 1993 |
| DeNURE, Dave | -- | Coach | WVB/WBKB/SB | 1982-86 | 1991 | ROMULUS, Rudy | 1991 | Athlete | M-Volleyball | 1988-91 | 1996 |
| DeVITO, Louis | 1960 | Athlete | Baseball | 1975-78 | 2005 | ROSS, Jonathan A. | 1956 | Athlete | M-Soccer | 1953-55 | 2010 |
| DIAS, Joe A. | 1977 | Athlete | M-Volleyball | 1982-98 | 2009 | SARLO, Paul A. | 1992 | Athlete | Baseball | 1989-91 | 2005 |
| DRURY, Eugene M. | 1963 | Athlete | W-Volleyball | 1986-90 | | SCHMID, John "Gene" | -- | Asst Coach/Coach | Baseball | 1968-72/ 73-97 | 2002 |
| ENG, Katherine | 1993 | Athlete | W-Basketball | 1987-88 | | SIMON, J. Malcolm | -- | Coach | M-Soccer | 1955-83 | 1994 |
| ETIENNE, Yves | 1979 | Athlete | M-Soccer/ M-Fencing | 1956-60 | 1992 | SKURLA, Peter J. | 1941 | Director of Athletics | -- | 1983-94 | |
| FEHN, Gilbert F. | 1940 | Athlete | M-Soccer | 1973-76 | 1993 | SORIANO, Gregory | 1975 | Athlete | Bowling | 1937-41 | 1992 |
| FITZGERALD, Joseph M. | -- | Coach/Asst. Coach | M-Tennis | 1960-63 | 1988 | SWANSON, Robert F. | -- | Director of Athletics | M-Fencing | 1968-72 | 2010 |
| FLEISHER, Seymour "Zoom" | 1951 | Athlete | W-Volleyball | 1989-92 | 2007 | TAETZSCH, Robert | 1952 | Athlete | -- | 1947-82 | 1986 |
| GAGLIARDO, Salvatore A. | 1985 | Athlete | M-Volleyball | 1976-78 | 1990 | TAETZSCH, William | 1952 | Athlete | M-Fencing | 1948-52 | 2007 |
| GALLAGHER, Thomas G. | 1985 | Athlete | M-Basketball | 1936-40 | 1992 | TOSATO, Lawrence P. | 1956 | Athlete | M-Fencing | 1948-52 | 2007 |
| GIOVANNOLI, Arnold L. | 1953 | Athlete | M-Tennis | 1936-40 | 1992 | TUBELLO, Jeffrey | 1976 | Athlete | M-Basketball/ Baseball | 1952-56 | 1987 |
| GOLDRICK PITT, Elizabeth M. | 1990 | Athlete | M-Basketball | 1961-66/ 52-61 | 1986 | TUBELLO, Jeffrey | 1976 | Athlete | Baseball | 1952-56 | 1987 |
| GRAZIANO, Jean M. | 1989 | Athlete | M-Basketball | 1947-51 | 1992 | TUBELLO, Jeffrey | 1976 | Athlete | Rifle | 1972-76 | 1988 |
| GRUENEWALD, Wendy A. | 1997 | Athlete | M-Basketball | 1947-51 | 1992 | VAN WRIGHT, Nevea | 1997 | Athlete | W-Basketball | 1991-96 | 2005 |
| HAASE, Jay W. | 1975 | Athlete | M-Basketball | 1981-85 | 1995 | WALSH, John J. | 1966 | Athlete | MSoc/MBKB/ Baseball | 1962-66 | 1986 |
| HAMMOND, Kenneth W. | 1979 | Athlete | M-Basketball | 1981-85 | 1991 | WASNIEWSKI, Frank | 1980 | Athlete | Baseball | 1962-66 | 1986 |
| HANDWERKER, Andy | 1963 | Athlete | M-Basketball | 1981-85 | 1991 | WELGOS, Bob | 1962 | Athlete | M-Tennis | 1977-80 | 1990 |
| HAUSSER, Paul C. | -- | Administrator | M-Basketball | 1950-53 | 1993 | WOROBEK, Myron S. | 1966 | Athlete | M-Basketball/ Bowling | 1959-62 | 2005 |
| HUBEY, Ali | 1972 | Athlete | W-Volleyball/ Softball/WBKB/WTen | 1985-90 | 1995 | YONEZUKA, Yoshishada | -- | Founder/Coach | M-Basketball/ Bowling | 1959-62 | 2005 |
| HURTADO, Fabian | 1975 | Athlete | Softball | 1986-89 | 2009 | ZORN, Werner | 1962 | Athlete | M-Soccer | 1962-65 | 1994 |
| | | | WBKB/Softball/ W-Volleyball/W-Soccer | 1992-96 | 2003 | | | | Judo | 1962-? | 1991 |
| | | | M-Fencing | 1971-75 | 1988 | | | | M-Soccer | 1958-61 | 1988 |
| | | | M-Soccer | 1974-77 | 2003 | | | | | | |
| | | | M-Soccer | 1959-62 | 2002 | | | | | | |
| | | | -- | 1953-91 | 1990 | | | | | | |
| | | | Fencing/Baseball | 1954-88/53-72 | | | | | | | |
| | | | M-Soccer | 1968-71 | 1990 | | | | | | |
| | | | M-Soccer | 1970-74 | 1987 | | | | | | |

| Teams | Year | Accomplishments | Year of Induction |
|------------------|---------|-------------------------------------|-------------------|
| Men's Soccer | 1960 | NAIA co-National Champion | 1988 |
| Men's Basketball | 1981-82 | NJIT's first ECAC and IAC champion | 1990 |
| Baseball | 1982 | NJIT's second ECAC and IAC champion | 1993 |

Directions

FOR GPS USERS

The address for Lubetkin Field at Mal Simon Stadium, the Estelle and Zoom Fleisher Athletic Center, and the Naimoli Family Athletic and Recreational Facility is 80 Lock Street, Newark, NJ, 07102.

BY CAR

New Jersey Turnpike: Driving North from South Jersey: Take NJ Turnpike to Exit 13A Newark Airport. After toll stay to left and follow signs to Rt. 1 & 9 North. You will merge onto Rt. 1 & 9 North. Airport will be on right. Follow signs for downtown Newark and Rt. 21 North-(left lane exit ramp). Downtown Newark will be in front of you. NYC will be off to your right. Follow Rt. 21 North (McCarter Highway). Turn left on Raymond Blvd. Follow Raymond Blvd. past Warren Street traffic light and Fleisher Athletic Center, Naimoli Center, and Lubetkin Field at Mal Simon Stadium will be to your right (one soccer goal line runs along Warren Street and the soccer sideline parallels Lock Street).

New Jersey Turnpike: Driving South from North Jersey: Take exit 15W to Route 280 West, then follow Route 280 West directions.

Route 280 West: After drawbridge, take Exit 15A (Rt. 21 South - McCarter Highway). Follow Rt. 21 South to Raymond Blvd. Turn right on Raymond Blvd. Follow Raymond Blvd. past Warren Street traffic light and Fleisher Athletic Center, Naimoli Center, and Lubetkin Field at Mal Simon Stadium will be to your right (one soccer goal line runs along Warren Street and the soccer sideline parallels Lock Street).

Route 280 East: Take Exit 15 (Rt. 21 South - McCarter Highway). Follow Rt. 21 South to Raymond Blvd. Turn right on Raymond Blvd. Follow Raymond Blvd. past Warren Street traffic light and Fleisher Athletic Center, Naimoli Center, and Lubetkin Field at Mal Simon Stadium will be to your right (one soccer goal line runs along Warren Street and the soccer sideline parallels Lock Street).

Garden State Parkway (North & South bound): Take exit 145 to Route 280 East, then follow Route 280 East directions.

Route 1 & 9 North & South: Take exit marked Newark, Rt. 21 North (McCarter Highway). Follow Rt. 21 North (McCarter Highway). Turn left on Raymond Blvd. Follow Raymond Blvd. past Warren Street traffic light and Fleisher Athletic Center, Naimoli Center, and Lubetkin Field at Mal Simon Stadium will be to your right (one soccer goal line runs along Warren Street and the soccer sideline parallels Lock Street).

Route 78 East: Take Route 78 East to Rt. 21 North. Turn left on Raymond Blvd. Follow Raymond Blvd. past Warren Street traffic light and Fleisher Athletic Center, Naimoli Center, and Lubetkin Field at Mal Simon Stadium will be to your right (one soccer goal line runs along Warren Street and the soccer sideline parallels Lock Street).

Route 22 East: Take Route 22 East to Route 21 North. Turn left on Raymond Blvd. Follow Raymond Blvd. past Warren Street traffic light and Fleisher Athletic Center, Naimoli Center, and Lubetkin Field at Mal Simon Stadium will be to



your right (one soccer goal line runs along Warren Street and the soccer sideline parallels Lock Street).

Route 21 North: Follow Rt. 21 North to Raymond Blvd. Turn left onto Raymond Blvd. Follow Raymond Blvd. past Warren Street traffic light and Fleisher Athletic Center, Naimoli Center, and Lubetkin Field at Mal Simon Stadium will be to your right (one soccer goal line runs along Warren Street and the soccer sideline parallels Lock Street).

Route 21 South: Follow Rt. 21 South (McCarter Highway) to Raymond Blvd. Turn Right on Raymond Blvd. Follow Raymond Blvd. past Warren Street traffic light and Fleisher Athletic Center, Naimoli Center, and Lubetkin Field at Mal Simon Stadium will be to your right (one soccer goal line runs along Warren Street and the soccer sideline parallels Lock Street).

New York Thruway: Thruway to Exit 14A, Garden State Parkway. Follow Garden State Parkway directions above.

George Washington Bridge: NJ Turnpike South to Exit 15W. Follow Route 280 West directions above.

Lincoln Tunnel: West on Rt. 3 to Rt. 21 South. Turn right onto Raymond Blvd. Follow Raymond Blvd. past Warren Street traffic light and Fleisher Athletic Center, Naimoli Center, and Lubetkin Field at Mal Simon Stadium will be to your right (one soccer goal line runs along Warren Street and the soccer sideline parallels Lock Street).

From Brooklyn, Queens and Long Island: Take Verrazano-Narrows Bridge (Interstate 278) and follow 278 across Staten Island. Cross Goethels Bridge. Follow signs to New Jersey

Turnpike North then follow New Jersey Turnpike directions above.

PARKING

Bus/Van Parking: Visiting buses and vans may usually park on Lock Street adjacent to the athletic center. Please be careful not to block the parking space reserved for the doctor.

Visitor Parking: Visitor parking may be reserved in advance through your host. Otherwise, visitor parking at NJIT is available in the NJIT parking deck. Turn right onto Warren Street. Turn right onto Colden Street and proceed around the block to Summit Street. Parking Deck entrance is located to your right before the intersection with Warren Street.

Parking for on-campus athletic contests: NJIT is offering free off-street parking for fans attending regular season home soccer and volleyball matches and basketball games. The parking entrance, marked by a yellow sign is located on New Street.

OTHER TRANSPORTATION SYSTEMS

Newark Liberty International Airport: Minutes from the NJIT campus. A minibus (Newark Airlin) or taxi service connects the airport with Penn Station in Newark. Bus, Newark Light Rail, and taxi connections are available at the station.

Newark Penn Station: Located in downtown Newark, connections to the NJIT campus may be made by bus, Newark Light Rail, or taxi.

Morris & Essex Broad Street Station: A five-block walk to the NJIT campus via MLK Boulevard to Central Avenue. Taxi service is also available.

Newark Light Rail: From Penn Station in Newark, take the Warren Street stop for the NJIT campus. The Warren Street stop is on the sidewalk behind the press box for Lubetkin Field at J. Malcolm Simon Stadium.

HOTELS DOWNTOWN

Hilton Newark Gateway
Gateway Center, Raymond Boulevard & McCarter Highway
Newark, NJ, 973/622-5000

Robert Treat Hotel
50 Park Place, Newark, NJ, 973/622-1900

Hampton Inn & Suites Newark Riverwalk
100 Passaic Ave, Harrison, NJ, 973/483-1900

NEAR NEWARK LIBERTY INTERNATIONAL AIRPORT
Best Western Newark Airport West
101 International Way, Newark, NJ, 973/621-6200

Hilton Newark Airport
1170 Spring Street, Elizabeth, NJ, 908/351-3900

Holiday Inn Newark Liberty International Airport
160 Frontage Road, Newark, NJ, 973/589-1000



2017 Highlanders Women's Volleyball

Back Row (l-r): Assistant Coach Jackie Granger, Adrienne Bynoe, Liz Benson, Iva Mandic, Mikalah Hughes, Tess Albyn, Head Coach Peter Volkert

Front Row (l-r): Alyssa Armada, Alahna Diaz, Emily Krachenfels, Adriana Nieto, Olivia Welsch, Madi Busler
(not pictured Jovana Baosic)

2017 HIGHLANDERS WOMEN'S VOLLEYBALL

AUGUST

Bucknell Tournament

| | | | |
|------|----|---------------------------------|--------|
| Fri. | 25 | vs. Iona (at Bucknell) | 4pm |
| Sat. | 26 | vs. Saint Peter's (at Bucknell) | 12pm |
| Sun. | 26 | vs. La Salle (at Bucknell) | 5:30pm |

Terrier Classic

SEPTEMBER

| | | | |
|--------|---|----------------------------|------|
| Fri. | 1 | vs. Maryland Eastern Shore | 10am |
| 10Sat. | 2 | vs. St. Francis Brooklyn | 9am |
| Sat. | 2 | vs. UMass Lowell | 2pm |

Hartford Invitational

| | | | |
|------|----|---------------------------|--------|
| Fri. | 8 | vs. Hartford | 7pm |
| Sat. | 9 | vs. CCSU (at Hartford) | 10am |
| Sat. | 9 | vs. Niagara (at Hartford) | 2:30pm |
| Wed. | 13 | at Manhattan | 7pm |

Lafayette Tournament

| | | | |
|-------|----|--|------|
| Fri. | 15 | at Lafayette | 7pm |
| Sat. | 16 | vs. Fairleigh Dickinson (at Lafayette) | 10am |
| Tues. | 19 | FAIRLEIGH DICKINSON | 7pm |
| Sat. | 23 | USC UPSTATE * | 1pm |
| Sun. | 24 | IONA | 1pm |
| Wed. | 27 | at Saint Peter's | 7pm |
| Fri. | 29 | NORTH FLORIDA * | 7pm |

OCTOBER

| | | | |
|-------|----|-------------------------|-------------|
| Sun. | 1 | JACKSONVILLE * | 1pm |
| Fri. | 6 | at Stetson * | 6pm |
| Sat. | 7 | at Florida Gulf Coast * | 6pm |
| Tues. | 10 | DELAWARE STATE | 7pm |
| Fri. | 13 | at Lipscomb * | 6:30pm (CT) |
| Sat. | 14 | at Kennesaw State * | 7pm |
| Sat. | 21 | at USC Upstate * | 1pm |
| Tues. | 24 | SAINT PETER'S | 7pm |
| Fri. | 27 | KENNESAW STATE * | 7pm |
| Sun. | 29 | LIPSCOMB * | 1pm |

NOVEMBER

| | | | |
|------|----|-----------------------------|-----|
| Fri. | 3 | FLORIDA GULF COAST * | 7pm |
| Sun. | 5 | STETSON * | 1pm |
| Fri. | 10 | at Jacksonville * | 6pm |
| Sat. | 11 | at North Florida * | 5pm |

ASUN Conference Tournament at Nashville, TN

| | | |
|-------|----|--------------------|
| Thur. | 16 | ASUN Quarterfinals |
| Fri. | 17 | ASUN Semifinals |
| Sat. | 18 | ASUN Finals |

*ASUN Conference matches
CAPS/Bold indicates home matches
 at Estelle and Zoom Fleisher Athletic Center

Head Coach: Peter Volkert, fourth season
 Assistant Coaches: Jackie Granger, Anthony Valbrun