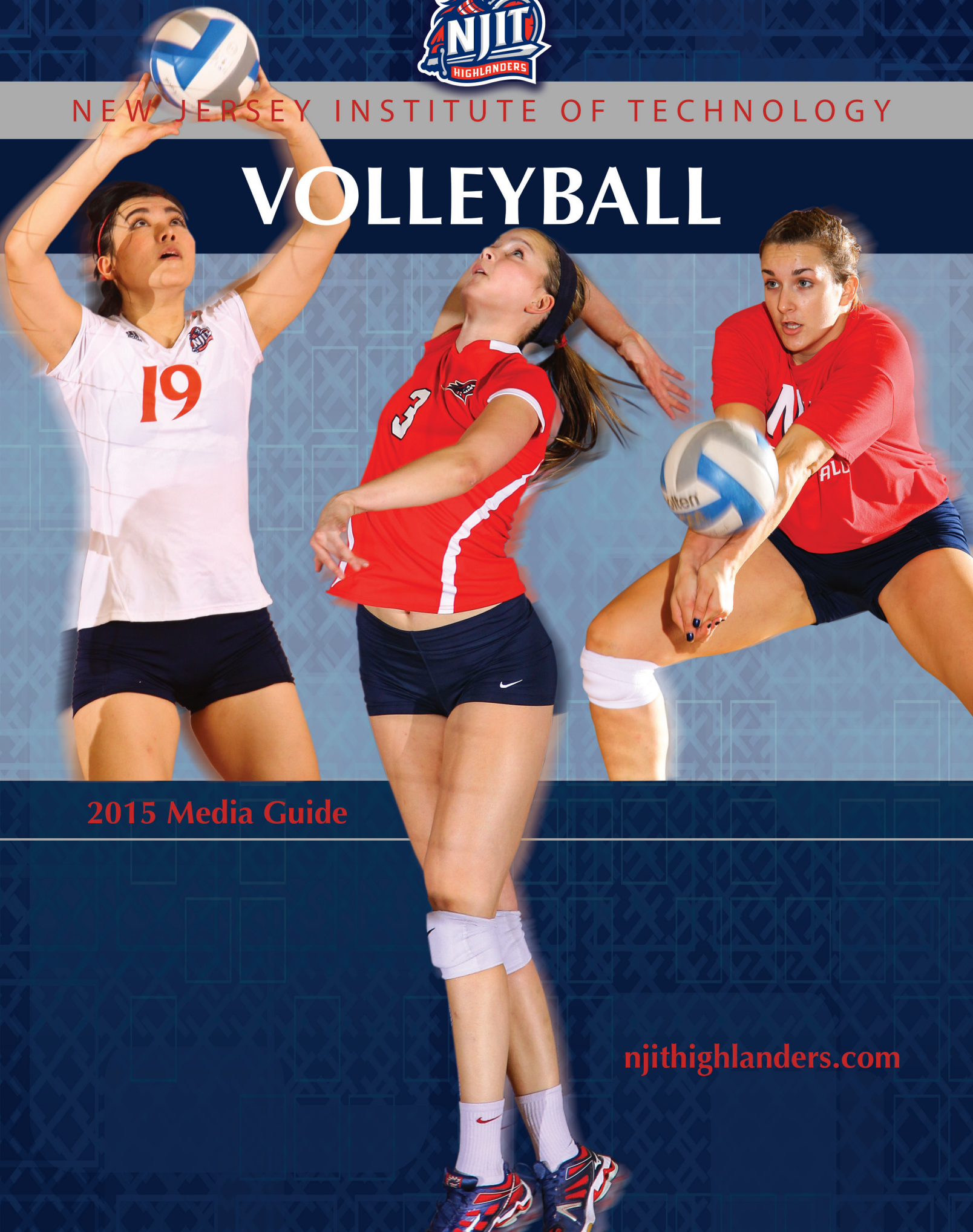




NEW JERSEY INSTITUTE OF TECHNOLOGY

VOLLEYBALL



2015 Media Guide

njithighlanders.com



VOLLEYBALL

WOMEN'S VOLLEBALL

Head Coach (alma mater, year):

Peter Volkert (Concordia College '92)

973-596-5380/volkert@njit.edu

Career Record: 361-308 (20)

Assistant Coaches: Ariel Scott (Penn State, 2013); Anthony Valbrun (NJIT, 1999); Marc Solondz (Indiana, 1986)

Captains: TBD

2014 overall: 13-22

QUICK FACTS

Location: University Heights, Newark, NJ

Founded: 1881

Enrollment:

10,646 (total)/7,550 (undergraduate)

NJIT website: www.njit.edu

Nickname: Highlanders

Colors: Red and White (Blue accent)

Home Court/Capacity: Estelle and Zoom Fleisher Athletic Center/1,500

Affiliations: NCAA Division I

Conference: Atlantic Sun

University President: Dr. Joel Bloom, EdD

Director of Athletics: Lenny Kaplan

Athletics Department Phone: 973-596-3636

WHY HIGHLANDERS?

The home of NJIT, University Heights, was formerly known as the Newark Highlands and NJIT's mailing address used to be High Street, until the thoroughfare was renamed in memory of Dr. Martin Luther King, Jr.

In 2006-07, NJIT athletics, in keeping with its move to NCAA Division I, unveiled a new graphic identity, which included a new Highlanders logo. Developed by CN Foundry for NJIT, the logo depicts the traditional Highlander, whose ferocity and bravery against all odds are the stuff of legend.

MEDIA RELATIONS

NJIT Athletics website:

www.njithighlanders.com

Facebook, Twitter, Instagram & YouTube:

@NJITHighlanders

Assistant AD for Sports Information:

Phone (Office): 973-596-8461;

(Cell): 201-401-2275

Email: camp@njit.edu

Assistant SID: Stephanie Pillari

Phone/Email: 973-596-8324/pillari@njit.edu

Assistant SID: Courtney Caden

Phone/Email: 973-596-8485/ caden@njit.edu

MEDIA INFORMATION

This guide is designed to assist in coverage of NJIT women's volleyball. For home matches, the NJIT sports information office will provide an official box score following each game. Coach Peter Volkert and requested players will be available for interviews on the court following a 10-minute cooling off period. Radio broadcast requests should be made at least 10 business days prior to the contest. Requests for coach and player interviews on nongame days should be made through the NJIT sports information office (973-596-8461).

CREDITS

The 2015 NJIT Women's Volleyball Media Guide is a production of the NJIT Sports Information Office in cooperation with the Office of Strategic Communications. Written and edited by Tim Camp and Stephanie Pillari. Cover and interior design by Karyn Olsen. NJIT photographs and information courtesy of Office of Strategic Communications. All interior team and action photography by Larry Levanti. Red Bull Arena photo (p. 25) courtesy of Getty Images/RBNY.

TABLE OF CONTENTS

About NJIT	2-7
University Administration	8-11
Athletics Senior Staff	11
Sports Medicine	12-14
Strength & Conditioning	15-16
Academic Enrichment	16-17
Athletic Administration & Coaching Staff ..	18
NJIT in Division I	19-21
Athletics Facilities	22-25
Atlantic Sun Conference	26-27
Head Coach Peter Volkert	28-29
Assistant Coaches	30
Roster	31
2014 Statistics and Results	32
Division I Records	33
Division I Superlatives	34
All-Time vs. Opponents	35
NCAA National Statistical Leaders	35
All Time Honors	36
Program History	37
Year-by-Year	38-44
All-Time Roster	45
Hall of Fame	46
Directions to NJIT	47
Team Photo	48

On the cover (left to right): Grace Gao, Tess Albyn, Katherine Gerton

NJIT is New Jersey's Science & Technology University. With roots going back to 1881, when it was founded as Newark Technical School, New Jersey Institute of Technology observed its 125th anniversary in 2006.

Located in University Heights, Newark, NJ, home to more than 30,000 college students, NJIT's campus is just 10 miles from New York City.

Playing a critical role in shaping New Jersey's future, NJIT, as a major public technological university, is an important pipeline for the flow of technology into society. The university's educational programs prepare students to be leaders in the technology-dependent economy of the 21st century. University researchers seek new knowledge to improve processes and products for industry. Through public and private partnerships and economic development efforts, the university helps to grow new business ventures that fuel the economy.

In recent years, NJIT has put tens of millions of dollars toward new and improved buildings and facilities on the 48-acre campus, including biomedical engineering labs and a campus center.



INSTRUCTIONAL PROGRAMS

NJIT offers an ever-expanding array of educational programs, with many new programs added in the last five years and more to come. In 2014 NJIT lists 125 undergraduate and graduate degree programs through six schools:

- Newark College of Engineering
- College of Architecture and Design
- College of Science and Liberal Arts
- School of Management
- Albert Dorman Honors College
- College of Computing Sciences



NJIT has 277 tenured or tenure track faculty; 99 percent of whom hold doctoral degrees or the highest degree attainable in their field. The student-faculty ratio is 16:1, with over 7,000 undergraduate students and nearly 3,000 graduate students. Our students hail from 33 states and more than 100 countries to rank eighth in the nation for diversity.

Albert Dorman Honors College enrolls more than 500 students who take advantage of honors courses, research opportunities, advising and mentoring. Honors College students have SAT scores ranking in the top 10 percent nationally.

With nearly 50,000 alumni, NJIT is an acclaimed institution.

- BuzzFeed.com ranked NJIT as the #1 higher education value nationally when considering annual tuition cost and average starting salary of graduates.
- Top one percent for return on investment and eighth in alumni earning potential among public universities nationwide – PayScale.com
- Top 10 percent nationally for return on investment and one of four best buys in New Jersey higher education –Bloomberg Businessweek
- Third in nation among America's Most Underrated Colleges – BusinessInsider.com
- Top National University – U.S. News and World Report
- 149th among national universities overall for its range of undergraduate majors and master's and doctoral degree programs and commitment to groundbreaking research - U.S. News and World Report
- An "America's Top College" – Forbes.com
- A Princeton Review Best College
- Top 200 American research universities –The Center for Measuring University Performance at Arizona State
- Top 50 among colleges without a medical school for research expenditures and top 10 among universities whose main research is in engineering – National Science Foundation
- Top 10 among technological universities in faculty scholarly productivity – Academic Analytics
- Top 100 producers of minority degrees, including fifth in the nation for bachelor's degrees in engineering technologies to all minority students – Diverse: Issues in Higher Education

RESEARCH

NJIT's research expenditures totaled more than \$110 million in FY2014 and faculty members welcome student collaboration on research projects.

As of September 1, 2014, NJIT had 185 issued U.S. Patents and 133 pending U.S. patent applications.

ECONOMIC DEVELOPMENT

NJIT is committed to economic development for Newark and the region. The university operates several outreach centers that provide direct technical assistance to the state's businesses with the goal of helping small and medium-sized companies. NJIT is also the home of New Jersey's oldest and largest incubator facility, and was one of the first institutions in the nation to adopt economic development as a fourth mission element, together with instruction, research and community service.

The Enterprise Development Center (EDC) at NJIT is New Jersey's largest high technology and life science business incubator, and one of the largest in the nation. EDC resident companies have attracted more than \$80 million in third-party funding since entering the incubator, and generated revenues of \$50 million last year. The approximately 90 member companies employ roughly 500 people.

THE CAREER EDGE

- NJIT was named in the top 1 percent for return on investment and 8th in alumni earning potential among public universities nationwide by *Payscale.com*.
- Students get a head start on their careers through cooperative education, salaried internships that relate specifically to their field of study.
- The 10 fastest-growing occupations for college graduates include NJIT's newest program areas—physician assistant and physical therapy—as well as computer-related occupations.
- Among the CEOs of the S&P 500 companies, engineering is the single most common undergraduate degree (22 percent of the group). More than half of the CEOs have undergraduate degrees in engineering, business management, science, math, or computing.

THE GLOBAL EDGE

The diversity in NJIT's student body and faculty prepares graduates to understand and succeed in the global marketplace.

THE TECHNOLOGY EDGE

NJIT has been designated one of the nation's most technologically sophisticated universities by *Forbes.com* and a *Princeton Review* survey and the university has received major funding from the National Science Foundation and the National Security Agency in recent years.

THE ACADEMIC EDGE

- NJIT named a Most Wired College by *Princeton Review*.
- NJIT was the first recipient of the Excellence in Technology Education Award presented by New Jersey Technology Council (NJTC), which annually recognizes outstanding technology companies and individuals who contribute to “growth, achievement, and excellence in diverse technology sectors of New Jersey.”
- *Forbes.com* and a *Princeton Review* survey designated NJIT as one of the nation’s most technologically sophisticated universities based on factors such as the ratio of computers to students, campus-wide and wireless networks, and technology-enhanced learning.
- NJIT has received major National Science Foundation (NSF) funding to define the next generation of computing applications. Most notable is the creation of *SmartCampus*, a wireless peer-to-peer, location-aware community system that immerses students in a world of wearable computers.
- NJIT has been designated a Center of Academic Excellence in Information Assurance (Homeland Security) Education by the **National Security Agency**.
- NJIT partners with Iowa State University in the Center for Information Protection (Homeland Security), an NSF-supported cooperative research center in information assurance.





THE REGIONAL EDGE

New Jersey, with America's highest concentration of pharmaceutical, hi-tech, biotech, and medical device companies is the place to study technology. It has the nation's highest per capita number of engineers and scientists as residents, while also leading in per capita rate of patents issued. Further, the Newark-New York region is a living laboratory for architecture and building sciences, environmental engineering and transportation. .

THE RESEARCH EDGE

NJIT has been designated by the State of New Jersey as the Homeland Security Technology Systems Center and NJIT operates the world-renowned Big Bear Solar Observatory.

A HISTORY OF NJIT

From the Industrial Revolution to the Information Age, New Jersey Institute of Technology has a rich history with its beginnings developing from the industrial age.

In 1881, an act of the New Jersey State Legislature, recognizing an urgent need, sought a home for what would be the state's technical school. The efforts of Newark's public and private sectors resulted with the opening of Newark Technical School, addressing the state's need.

Over time, the university expanded its curriculum and mission. In 1919, the university established baccalaureate programs in three engineering fields. By the middle of the 20th century, Newark Technical School was transformed into the robust Newark College of Engineering.

The post-war period was one of enormous activity with regular expansion of the campus, as well as the introduction of doctoral level programs. In 1975, with the addition of the New Jersey School of Architecture, the institution had evolved into a technological university, emphasizing a broad range of degrees and dedication to significant research and public service. Newark College of Engineering, stronger than ever, remained intact, but a new university name -- New Jersey Institute of Technology -- reflected the institution's expanded mission.

A broadened mission called for the creation of a residential campus and the opening of NJIT's first dormitory in 1980 began a period of steady growth that continues. Two new schools were established during the 1980s--the College of Science and Liberal Arts (1982) and the School of Industrial Management (1988). The Albert Dorman Honors College was established in 1994, and the College of Computing Sciences, was created in 2001. Beginning in 2009 the College of Architecture and Design was created to house the New Jersey School of Architecture and the new school of Art and Design.





DR. JOEL BLOOM

President, New Jersey Institute of Technology

Appointed President of New Jersey Institute of Technology on January 12, 2012 by unanimous vote of NJIT's Board of Trustees, Joel S. Bloom started his career in industry working as an economist.

He subsequently became an educator and administrator for the New York City public schools. Prior to coming to New Jersey, he worked as a research director and instructor at Teachers College, Columbia University.

In New Jersey, he managed state and federally-funded curriculum development and training centers for the state. From 1983 through 1990, Dr. Bloom served as assistant commissioner in the NJ Department of Education for the Division of General Academic Education. He was responsible for managing many of the education department's initiatives including competency testing, curriculum content standards, pre-school

programs, establishment of 17 model effective schools, over 300 grants and contracts, and a \$24 million budget.

Immediately prior to his appointment as President, he served as Interim President from September 2011 until January 2012. Prior to that, he was NJIT's Vice President for Academic and Student Services, as well as founding dean of the Albert Dorman Honors College.

Indeed, since joining NJIT in July 1990, Dr. Bloom has served the university in many capacities.

Promoted in 1996 to Vice President for Academic and Student Services, he was responsible for nine divisions of the university, including pre-college programs, enrollment management, continuing professional education, career development services, dean of student services, freshman studies, educational opportunity programs, library services, physical education and athletics.

Dr. Bloom was appointed as the first dean of the Albert Dorman Honors College in 1998, in addition to his vice president responsibilities. The Honors College enrolls over 650 students who come from 15 states

and several foreign countries. The average SAT score is over 1340 and the majority of the incoming freshman class members graduated in the top 15 percent of their high school class. More than 50 percent of the Honors College students maintain a grade-point average higher than 3.5.

Dr. Bloom is chair of the Science Park Board, treasurer of the NJ President's Council, and treasurer of the NJEDGE.Net Board. In addition, he serves as a member of the following boards: the Board for Communities and Schools, Newark Alliance, Philadelphia Alliance for Minority Participation, La Casa de Don Pedro, and the Association of Public and Land-grant Universities Presidents Council. Dr. Bloom has been the recipient of national and state education awards, as well as federal, foundation and corporate grant awards. He has published journal articles and presented papers on school improvement, curriculum development, college transition and student assessment.

Dr. Bloom holds a master's degree and a doctorate from Teachers College, Columbia University. He also earned master's and bachelor's degrees from Hunter College of the City University, New York City.



CHARLES J. FEY

Vice President for Academic and Student Services

oversees numerous offices and departments at NJIT, including including Intercollegiate Athletics, Recreation and Intramurals, Physical Education.

Fey actively participates in student affairs business on a national level and holds or has held board positions in ACPA, NASPA, and APLU. He was the founding president of the Massachusetts College Personnel Association and was president of the Texas Association of College and University Personnel Association. Fey has received numerous awards including the Esther Lloyd Jones Professional Service Award from ACPA; is a Diamond Honoree of ACPA's Foundation; twice received the Outstanding Service award from the Commission on Administrative Leadership of ACPA; and an exemplary service award from MCPA.

Fey earned his bachelor's degree in liberal arts and his masters of education degree in counselor education, college student personnel services, both from The Pennsylvania State University. He holds a doctorate in higher education administration from Texas A&M University.

Prior to NJIT, he was the Vice President for Student Affairs at The University of Akron; was Vice President for Student Affairs at University of Maryland, Baltimore County (UMBC); Dean of Students at the University of Texas at El Paso; served as Vice President and Dean of Student Life at Our Lady of the Lake University in San Antonio; Dean of Students at St. Mary's University, also in San Antonio; Associate Dean of Student Affairs at Keene (NH) State College; Director of Housing/Resident Life at Catholic University of America; and in numerous student affairs and other administrative posts at Newbury Junior College in Boston.

Married to Melba Ann Fey since 1985, Charlie and Melba have two daughters, Kelly Prestel, living in Boston, and Chelsea Fey, living in Arlington, VA and two sons, Lloyd Lopez and Matt Lopez, who live in San Antonio.

Dr. Fey joined NJIT in September 2012 with 39 years of leadership experience in student services as Vice President of Academic Support and Student Affairs.

At NJIT, he continues his commitment to creating a campus climate that promotes student achievement and student success. His personal philosophy of student engagement extends to the development of innovative programs that inspire challenging and engaging student experiences and encourage each student to reach for his/her dream and work until it is achieved.

Dr. Fey's strong record of accomplishments demonstrates his deep understanding of emerging issues and trends that affect metropolitan campuses and the students who attend them. In addition to his direct involvement with students, Fey



LENNY KAPLAN

Assistant Vice President/Director of Athletics

Since taking over as head of New Jersey Institute of Technology's division of physical education and athletics in August 2000, Lenny Kaplan has been instrumental in guiding the program's growth, first at the NCAA Division II level and, since late 2002, the successful reclassification to NCAA Division I.

The 2014-15 academic year saw momentous accomplishments and change for Highlander athletics.

In competition, two NJIT teams, men's soccer and men's basketball, scored victories over nationally-ranked opponents. Men's soccer defeated #22 Navy in late September 2014 and men's basketball became a national story when it upset #17/#16 Michigan in Ann Arbor on December 6. Later, the men's basketball team won its first three games in the national CollegeInsider.com postseason tournament, advancing to the semifinals.

Off the court, NJIT announced plans to build a new Wellness and Events Center, a \$100 million on-campus facility with an opening targeted for 2017. And finally, the Highlanders, who had been the only Division I

Independent in the nation, accepted an opportunity to become the eighth full member of the multisport Atlantic Sun Conference, effective July 1, 2015.

Along the way, Kaplan was promoted in 2014-15 to his new title of Assistant Vice President/Director of Athletics.

He has been a member of the Division I-AAA Athletics Directors Association (DI-AAA ADA) Executive Committee since 2012-13. The Division I-AAA Athletics Directors Association's mission is to enhance initiatives common to its Division I-AAA membership (the Division I institutions that do not sponsor football).

In September 2015, Lenny Kaplan was lauded at the annual Eastern College Athletic Conference (ECAC) Honors Luncheon. In a program that recognized student-athletes, administrators, institutions and officials, he was one of two named Division I Male Administrator of the Year.

Going back more than a decade to his arrival at NJIT, Kaplan helped stabilize and expand a program that was entering its fourth year in Division II. In late 2002, after discussions with then-university President Dr. Robert A. Altenkirch and Vice President (now President) Dr. Joel Bloom, Kaplan took on the task of steering NJIT's programs into Division I, an arduous process that reached fruition with the NCAA's granting active Division I status, with full championship eligibility effective September 1, 2009.

Throughout Kaplan's tenure, NJIT has enhanced the athletics program, particularly in areas that benefit the

student-athletes directly. A hallmark in achieving that aim was the Highlanders Athletics Campaign, which announced in the summer of 2009 that it had raised \$5.4 million, exceeding its original goal. In the \$5 million goal, \$3 million was for facilities, \$1.5 million for athletic scholarships, and \$500,000 for program support.

The sports offerings have expanded to the current 19 varsity programs. And since 2004, NJIT has renovated its two main on-campus venues—Lubetkin Field at Mal Simon Stadium at Lubetkin Field and the Estelle and Zoom Fleisher Athletic Center. Further, the Naimoli Family Recreation Center, a 25,600-square foot facility opened early in 2011 enhanced the recreational and intercollegiate opportunities on campus. The Naimoli Center is the home of both NJIT tennis teams.

The school also signed a 10-year partnership to play all home baseball in the professional Bears and Eagles Riverfront Stadium and later agreed to host select basketball home games in the Prudential Center, downtown Newark home of the NHL's New Jersey Devils. The NJIT club hockey team also plays all of its home contests in the AmeriHealth Pavilion, part of the Prudential Center that serves as the Devils practice rink.

Under Kaplan's leadership, many teams achieved regional and national Division II ranking. Success for several women's teams was unprecedented, with basketball, tennis and soccer all reaching postseason play for the first time in their existence under his administration.

Additionally, men's volleyball captured a divisional championship in the Eastern Intercollegiate Volleyball Association and the next year reached the EIVA playoff semifinals hosted by eventual 2008 national champion Penn State.

In 2009-10, NJIT's first year as a full active member of Division I, the women's volleyball team and senior Sabrina Baby became the school's first Division I national statistical champions, as team and individual leaders, respectively, digs per set. Baby was honored as the school's first CoSIDA Academic All-America in the Division I era, earning third-team national honors.

Christian Baumbach made history in 2009 as NJIT's first individual DI conference champion, when he won the Great West Conference men's cross country race. He also won the prestigious IC4A University Division race in the 101st annual running of that contest.

In 2010-11, the Highlanders earned their first-ever Division I conference team championship when women's tennis captured the Great West title, a feat they repeated the following year. In 2012-13, both basketball teams won Great West Conference crowns. Individually, men's basketball players Isaiah Wilkerson (2011-12), Chris Flores (2012-13), and Damon Lynn (2014-15) have all been Associated Press All-America honorable mention recipients,

Marko Drljic became the first NJIT men's soccer player to be selected to the All-Region season honors from the NSCAA at

the highest level, earning the honor in both 2013 and 2014. Cristian Marcel won similar honors in 2014. The duo were Sun Belt Conference Offensive Player of the Year (Marcel) and Defensive Player of Year (Drljic) in 2014, as well.

Men's tennis player Markus Schultz has achieved regional ranking in both 2013-14 and 2014-15.

John Porteous became the first NJIT track and field athlete to qualify to the 2014 NCAA Track and Field Regional, earning a spot in the men's 400-meter hurdles.

Julia Garcia, a freshman, was second in the epee at the 2015 NCAA Championships, becoming the school's first women's fencing All-America.

NJIT's growing success in Division I competition has been gone along with a continued commitment to excellence in the university's rigorous academic environment. The combined grade point average of Highlander student-athletes has been above 3.0 for 12 straight semesters through Spring 2015.

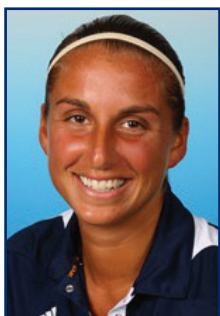
Before coming to NJIT, Lenny Kaplan served 11 years at Manhattan College, where he began as Manhattan's director of operations and was assistant athletics director from 1991-2000.

Kaplan, a 1988 graduate of St. John's University with a degree in athletics administration, resides in Merrick, NY, with his wife, Nancy. They are the parents of two sons, Michael, a student at Lafayette College, and Joshua, who is in high school.

Athletics Senior Staff



Andrew Schwartz
Senior Associate Athletic Director
(973) 642-7224 aschwartz@njit.edu



Stephanie Pillari
Acting Senior Women's Administrator/
Assistant Sports Information Director
973-596-8324 pillari@njit.edu



Tim Camp
Asst. Director of Athletics/
Sports Information
(973) 596-8461 timothy.camp@njit.edu



Jayson Smikle
Assistant Athletic Director
for Compliance
(973) 596-5278 jsmikle@njit.edu



Tim Paul
Assistant Director of
Development for Athletics
(973) 596-8489 tpaul@njit.edu

SPORTS MEDICINE

NJIT sports medicine is moving forward with the growth of the Highlanders program. Head trainer Matt Koscs, MS/ATC, oversees the program, ably assisted by assistant trainers Paul Grayner, MEd/ATC; Melissa Maskery, MS, ATC; Brittany Vondran, MS/ATC; and, Kyle Tuohy, BS/ATC.



Matt Koscs, ATC, Head Athletic Trainer

Matt Koscs, who earned both his bachelor's and master's degrees from University of Delaware, has

served NJIT as head trainer since July 2009, a year after he joined the staff as an assistant trainer.

As an undergraduate at Delaware, he was recipient of the Paris Delligatti Memorial Award for Excellence in Athletic Training. He

earned his MS in Exercise Science from Delaware in 2008.

Prior to his arrival at NJIT, Matt served three years as the head athletic trainer at Hodgson Vocational Technical High School in Newark, DE, from 2005 to 2008.

In addition to his work at the high school level, he was head athletic trainer for the Delaware Dynasty semi-pro soccer team in Wilmington, as well as with the Kirkwood Soccer Club in New Castle in 2005 and 2006.

He was employed from 2005 to 2008 at Christiana Care Physical Therapy Plus, in Newark, DE, where he was an athletic trainer and was the Director of Athletic Training Services in a clinical setting.

He is a NATABOC certified athletic trainer, as well as holding additional certifications as a professional rescuer and in first aid.

He resides in Metuchen, NJ with his wife Kristin and daughters Eloise, Claire and Madeleine.



Paul Grayner, ATC, Assistant Athletic Trainer

Paul Grayner, who joined the NJIT staff as an assistant athletic trainer late in the 2008 calendar year, has a diverse

background in athletic training, having served at the college and professional levels, as well as in a fitness center setting.

A graduate of Saint Leo College in Florida and holder of a master's

degree from American University in Washington, DC, Grayner has served as both a head and assistant trainer in the past.

From the mid-1970s to the mid-1980s, he was a trainer in the minor league systems of the New York Yankees and New York Mets from 1977 to 1985 and in 1984 he was assistant trainer with the Mets. He later worked with the Long Island Knights professional basketball team.

At the collegiate level, he was head trainer at Division I Fairleigh Dickinson University in Teaneck, NJ from 1989 to 1998 and he earlier worked as an assistant trainer at Hofstra (1982-85) and Adelphi (1985) on Long Island before joining FDU as an assistant (1986-89).

In addition to his work in athletic training, Grayner is a financial services representative and a life insurance sales representative.

He resides in Dumont, NJ.



Melissa Mackey, ATC, Assistant Athletic Trainer

Melissa Mackey, who joined the NJIT staff as an assistant athletic trainer in the summer of 2013, earned her bachelor's

degree, majoring in athletic training and minoring in strength and conditioning, from the University of Delaware in 2011.

She earned her master's in athletic training at Temple University in May 2013.

As a graduate assistant, she worked in Philadelphia with several Division I teams at Drexel University and as an undergraduate, on the medical staff for Delaware's 2010 Division I Football Championship Series (formerly known as Division I-AA) national runner-up.

She has worked as a trainer at numerous summer camps and before coming to NJIT, she earned the 2013 Merit Award for Research in the College of Health Sciences & Social Work and was the recipient of Drexel University Dragon Award for Leadership.

She is married to Mark Mackey.



Kyle Tuohy, ATC, Assistant Athletic Trainer

Kyle Tuohy, a 2014 summa cum laude graduate of East Stroudsburg (PA) University, joined the NJIT

athletic training staff in September 2014.

Tuohy, who will attend graduate school while working at NJIT, won

multiple awards from his alma mater, including the David Carylton Athletic Training Outstanding Student Award in May 2014.

He had varied clinical internship experience starting in the Fall Semester 2012 and continuing through his senior year.

His internships included stints with the East Stroudsburg women's basketball team; Parkland High School and Pen Argyl High School,

both in Pennsylvania; the Tennessee Smokies professional baseball team, Class AA minor league affiliate of the Chicago Cubs; and Lafayette College in Easton, PA, where he worked closely with the Leopards football team in season and also worked with athletes from all in-season sports in the Fall Semester.

He holds several profession-related certifications, including from the National Athletic Trainers Association.



Lauren Kravitz, ATC, Assistant Athletic Trainer

Lauren Kravitz, who joined the NJIT staff as an assistant athletic trainer in the fall of 2015, earned her bachelor's degree,

majoring in athletic training from William Paterson University in 2013.

She is pursuing her master's in exercise science with a concentration in exercise physiology at Kean University with an

anticipated graduation in December 2015.

As a graduate assistant at Kean University, she was the primary contact for NCAA Division III men's and women's basketball, field hockey and men's and women's lacrosse.

Prior to graduation at William Paterson, she worked as an athletic training student, providing treatment for NCAA Division III football, softball, men's basketball and men's and women's soccer.

She has worked as an Occupational Therapist Aide at Optimum Orthopedics in Montclair, NJ, as well as an Aide at Push to Walk, a non-profit organization in Riverdale, NJ, that provides individualized workouts and resources to people with spinal cord injuries and other neurological conditions.

Her volunteer experience includes: National Special Olympics, Special Olympics of New Jersey Summer Games and Special Olympics of New Jersey Fall Games.

Administration



Louis Rizio, MD, Team Physician

Dr. Rizio is a board certified orthopedic surgeon and is fellowship trained in the field of sports medicine. He is a graduate of Rutgers and after earning his medical degree from the UMDNJ/New Jersey Medical School (recently reorganized and renamed Rutgers Biomedical and

Health Sciences), Dr. Rizio completed his orthopaedic residency at Tufts University in Boston.

He then completed a sports medicine fellowship at the University of Miami. During his fellowship, he was assistant team physician of the Miami Dolphins, University of Miami Hurricanes, and the Florida Marlins.

Dr. Rizio, who specializes in sports-related injuries, practices at the Sports Medicine and Orthopaedic

Center in Livingston, NJ. Prior to starting his own practice, Dr Rizio was the Chief of Sports Medicine at the NJ Medical School from 2000-2005. He currently is a professional, college, and high school team physician.

In 2013, Dr. Rizio was honored by the magazine New Jersey Monthly on its "Jersey Choice Top Doctors" list.

STRENGTH AND CONDITIONING

There are many ways to make a team better and a vital path to improvement comes with the mantra "bigger, stronger, faster".

It's how teams get better from within by maximizing individual and team performance in competition. The Strength and Conditioning staff also works closely with the Athletic Training Staff in the areas of injury prevention and rehabilitation.

In the summer and fall of 2014, NJIT's Strength and Conditioning took new direction with the appointment of Bobby Fisk as Head Strength and Conditioning Coach and Drew Culp as Fisk's Assistant Coach.



Bobby Fisk, Head Strength & Conditioning Coach

Bobby Fisk, who was a basketball player in his own college days and coached the sport after college, comes to NJIT from Xavier University in Cincinnati, where he was assistant coach of strength and conditioning for the entire Musketeers' program, which

competes in the Big East Conference.

Fisk, a native of Schenectady, NY, spent over two years at Hobart and William Smith Colleges in Geneva, NY, where, as head strength and conditioning coach, he worked with successful teams, including women's soccer (William Smith College), which won the 2013 NCAA Division III National Championship; football (Hobart), which advanced to the 2012 Division III national quarterfinals and the regional finals in 2011 and

2013; and basketball, where Hobart reached the second round of the 2012 NCAA Tournament.

Moving to the Division I level with Xavier in 2013-14, Fisk worked with all 16 of the school's teams, with a primary assignment to women's basketball, men's and women's soccer, baseball, and men's and women's tennis.

He is a graduate of the State University of New York College at

Oneonta (BS, Business Economics, 2008), Averett University of Danville, VA (MBA, 2010), and California University of Pennsylvania (MS in Exercise Science, Performance Enhancement & Injury Prevention, 2013).

As a student-athlete, Fisk was a men's basketball player at NCAA Division I UMBC in Baltimore for three years before transferring to Oneonta, where he was on the team for two years, serving as captain as a senior and earning All-State

University of New York Athletic Conference honorable mention.

As a senior for Oneonta's Red Dragons, he finished 16th in the nation in Division III in 3-point shooting percentage (.441) and 22nd in 3-pointers made per game (3.2) as a senior at Oneonta.

After graduation from Oneonta, he entered coaching while pursuing his master's degree at Averett, serving that program as assistant men's basketball coach (two years) and head strength and conditioning

coach (one year).

Having received his master's degree from Averett in December 2010, he returned home to the Schenectady area and worked April 2011 to July 2011 as assistant strength and conditioning coach at nearby Siena College and with the minor professional basketball Albany Legends (head strength and conditioning coach).

Fisk holds multiple certifications and professional memberships.



Drew Culp, Assistant Strength & Conditioning

NJIT's head strength and conditioning coach Bobby Fisk named Drew Culp to be his assistant coach in

nearby Seton Hall prior to accepting his position with NJIT.

At Seton Hall, Culp worked with the school's Big East Conference men's and women's basketball teams, as well as with the men's soccer team.

Between college and coming to New Jersey, Culp worked at Velocity Sports Performance in Irvine, CA. He was a Sports Performance Coach and Assistant Sports Performance Director. Specifically, he was the Head Strength and Conditioning Coach for the El Toro High School football team and also assisted in

training National Football League combine athletes. He also offered private training to athletes in a range of sports and age levels.

Drew Culp was a graduate assistant strength and conditioning coach at Penn State, working with the Nittany Lions football team for over a year through preseason 2012 and working with 11 Olympic Sports teams in his final semester.

He holds multiple certifications, including both strength and conditioning and first aid and CPR.

September 2014.

Culp, who earned his bachelor's degree from Penn State University in 2010 and his master's degree from Penn State in 2012, most recently served as a volunteer assistant strength and conditioning coach at



ACADEMIC ENRICHMENT

Sandra Taylor, Director of The Learning Center

Sandra Taylor was appointed as Director of The Learning Center in late September

2014 after serving as Interim Director for the previous 16 months.

She joined NJIT in January 2010 as Academic Advisor for Student-Athletes working in NJIT's Center for Academic and Personal Enrichment (CAPE), which has since been renamed as The Learning Center.

She mentored student-athletes in the areas of academic support, personal development, leadership, and community service. She was instrumental in bringing the Chi Alpha Sigma Honor Society for student-athletes to campus and has been individually certified from the N4A (National Association of Academic Advisors for Athletics) as an academic advisor for student-athletes.

In May 2013, she was elevated to Interim Director of CAPE and presided over its transition to the Learning Center in August of 2014. The Learning Center provides academic support to all students, mentoring and workshops, tutoring in areas outside of math and writing,

and testing accommodations for students with disabilities. She has served on NJIT's Strategic Planning, Academic Advising, Retention and Persistence, Customer Service, Student Satisfaction, and Athletic Oversight Committees.

Prior to joining NJIT, Taylor spent 17 years as a key member of the Manhattan College Department of Athletics. She earned both her bachelor's degree in secondary education and her master's degree in special education from Manhattan College and is working on her doctorate in educational leadership at St. Mary's University in Winona, MN.

Working in the athletics department at Manhattan, a founding member of the Metro Atlantic Athletic Conference, Taylor was Associate Director of Athletics and Senior Woman Administrator, having filled those posts from 1996 until joining NJIT in 2010,

For much of her time on the Manhattan staff (1995 to 2003), she was Chief Athletic Department Compliance Officer, with responsibility for Manhattan's adherence to NCAA Division I, MAAC and college regulations. She began her service at Manhattan as

Athletic Department Ticket Manager, serving in that capacity from 1993 to 2003.

In her time at Manhattan, she served on numerous NCAA, conference and internal college committees, including service on the NCAA Division I Management Council from 2004 to 2007 and as chair of the NCAA Women's Lacrosse Committee from 2002 to 2006.

At the conference level, she chaired the MAAC Women's Basketball Committee from 1997 to 2009 and also served on four other sport committees, as well as on the MAAC Committee on Athletic Administration, with service as vice-chair in 2008-09.

Internally at Manhattan, her assignments included service on the Middle States Review in 2000 and on the NCAA Certification Committee.

Sandra and her husband, Ken, who is Associate Athletics Director/Development and Marketing at Monmouth University after many years as Associate Commissioner at the MAAC, reside in Monroe Township, NJ, with their daughters, Katherine, who was born in May 2004, and Samantha, who was born in July 2009.



Mike Spisto, Eligibility Certification Officer/Academic Adviser for Athletics

Mike Spisto moved to administration as NJIT's Eligibility Certification Office/Academic

Adviser for Athletics in the Spring of 2013, working in the Center for Academic and Personal Enrichment (CAPE), now named The Learning Center.

For the previous five years, he was the top assistant coach on the men's basketball staff, working with head coach Jim Engles in an association that culminated with the Highlanders capturing the 2013 regular season championship of the Great West Conference.

In addition to 14 years college coaching—five at NJIT—he served as Director of Athletics at the State University of New York at Delhi in the

two years before he joined Engles' coaching staff with the Highlanders.

He had two stints as head coach at SUNY at Delhi sandwiched around three years as a Division I assistant with Rider and Albany (NY). He began his coaching career with two years an assistant at his alma mater, Division III SUNY Oneonta.

At Delhi, which is also an alma mater, he was head coach from 1999 to 2001, left to become a Division I assistant and then returned for another two-year stint as head coach from 2004 to 2006 before becoming AD at Delhi.

His head coaching record in four years at SUNY Delhi was 86-31 and both stints included championships and coaching awards. His first Division I coaching assignment came at Rider University in 2001-02, where he worked alongside Jim Engles as an assistant when Rider captured its first-ever Metro Atlantic

Athletic Conference regular season championship.

Heading to the University at Albany (NY), he helped recruit the team that would win back-to-back America East Conference championships.

Spisto's coaching career began at Oneonta State following his 1997 graduation. In addition to his bachelor's degree from Oneonta, he earned an associate's degree from SUNY Delhi, as well as an MSS from United States Sports Academy.

He played at both Delhi and Oneonta and was all-region twice at Delhi, where he is the career assists leader. At Oneonta he was captain as a senior after winning an ECAC title his junior year.

Mike and his wife, Katie-Lynn, reside in Staten Island, NY, with their young children: sons Michael (10) and Christopher (7), and daughter Alyssa (3).



Brittany Vorndran, Academic Advisor for Student-Athletes

Brittany Vorndran, who joined the NJIT staff as an assistant athletic trainer in the summer of 2012, earned

her bachelor's degree, majoring in athletic training, from Bridgewater (MA) State University in 2010 and was the school's 2008-09 Athletic Training Student of the Year.

She earned her master's in Kinesiology at James Madison University in Harrisonburg, VA, in May 2012.

At James Madison, she worked with the cross country, track and field, tennis and cheerleading teams.

A resident of Millville, NJ, she has worked as a substitute teacher for the Millville Board of Education.

Administration

SENIOR ADMINISTRATION

Lenny Kaplan	Assistant Vice President/Director of Athletics
Andrew Schwartz	Senior Associate Athletic Director
Stephanie Pillari	Acting Senior Woman Administrator
Jayson Smikle	Assistant Athletic Director for Compliance
Tim Camp	Asst. Athletic Director for Sports Information
Brian Callahan	Assistant Director of Physical Education
Michael Siegel, PhD	Faculty Athletic Representative
Kerry Feder	Administrative Assistant for the Director of Athletics

ACADEMIC SUPPORT

Sandra Taylor	Director of The Learning Center;
Mike Spisto	Eligibility Certification Officer/ Academic Advisor Athletics

ATHLETIC TRAINING

Matt Koscs	Head Athletic Trainer
Paul Grayner	Assistant Athletic Trainer
Melissa Mackey	Assistant Athletic Trainer
Kyle Tuohy	Assistant Athletic Trainer
Lauren Kravitz	Assistant Athletic Trainer
Dr. Louis Rizio	Team Physician

COMPLIANCE

Jayson Smikle	Assistant Athletic Director for Compliance
Raquel Green	Compliance Coordinator

DEVELOPMENT

Tim Paul	Assistant Director of Development for Athletics
----------	--

FLEISHER ATHLETIC CENTER/ WARREN STREET FITNESS CENTER

Casey MacDonald	Interim Operations Manager
Joe Vacca	Athletics Business Coordinator/ Ticket Manager
Jonathan Walker	Warren Street Fitness Center Front Desk

SPORTS INFORMATION

Tim Camp	Assistant Athletic Director for Sports Information
Stephanie Pillari	Assistant Sports Information Director
Courtney Caden	Assistant Sports Information Director

STRENGTH AND CONDITIONING

Bobby Fisk	Head Strength and Conditioning Coach
Drew Culp	Assistant Strength and Conditioning Coach

COACHING STAFF DIRECTORY

BASEBALL

Brian Guiliana	Head Coach
Robbie McClellan	Assistant Coach
Grant Neary	Assistant Coach
Craig Anderson	Volunteer Assistant Coach

MEN'S BASKETBALL

Jim Engles	Head Coach
Brian Kennedy	Assistant Coach
Jesse Agel	Assistant Coach
Kim Waiters	Assistant Coach
Andrew McGlynn	Director of Basketball Operations

WOMEN'S BASKETBALL

Steve Lanpher	Head Coach
DeAnn Kraft	Assistant Coach
La Kea Jones	Assistant Coach
Epiphany Smith	Assistant Coach

MEN'S & WOMEN'S CROSS COUNTRY

Al Alonso	Head Coach
John Crawford	Assistant Coach

MEN'S AND WOMEN'S FENCING

Yefim Litvan	Head Coach
Jason Henderson	Assistant Coach
Henry Kennard	Assistant Coach
Danielle Henderson	Assistant Coach

MEN'S LACROSSE

Travis Johnson	Head Coach
Brad Conlon	Assistant Coach
Fran Gormley	Assistant Coach
Brian Tironi	Volunteer Assistant Coach

MEN'S SOCCER

Didier Orellana	Head Coach
David Janezic	Assistant Coach
Augi Freitas	Assistant Coach
Anthony Tuesta	Volunteer Assistant

WOMEN'S SOCCER

Mandi Risden	Head Coach
Scott Waddell	Assistant Coach
Chris Duggan	Assistant Coach
Tim Verschuren	Volunteer Coach

MEN'S SWIMMING & DIVING

Michael Lawson	Head Coach
Mark Albright	Assistant Coach
Shawn Bryan	Assistant Coach
Anthony Cacula	Volunteer Diving Coach

MEN'S AND WOMEN'S TENNIS

Ira Miller	Head Coach
Jacob Myer	Assistant Coach
Livia Gherman	Assistant Coach

MEN'S AND WOMEN'S TRACK AND FIELD (INDOOR & OUTDOOR)

Al Alonso	Head Coach
John Crawford	Assistant Coach
James Luginsland	Assistant Coach (Throws)

MEN'S VOLLEYBALL

Danny Goncalves	Head Coach
Brennon Dyer	Assistant Coach

WOMEN'S VOLLEYBALL

Pete Volkert	Head Coach
Ariel Scott	Assistant Coach
Anthony Valbrun	Assistant Coach
Marc Solondz	Volunteer Coach

Beginning on September 1, 2009, the entire NJIT athletics program officially gained across-the-board active membership in NCAA Division I, completing a process that began officially in 2003.

NJIT, its teams and student-athletes enjoy the full benefits of Division I membership, including eligibility for Division I postseason championship competition and the inclusion of the Highlanders among the national Division I leaders in statistics maintained by the NCAA.



Danica Vukotic

Within months of NJIT's active Division I membership, the school won its first national Division I statistical championships, as women's volleyball player Sabrina Baby led the nation in digs per set and her teammates captured the team crown for digs, as well.

The NCAA's decision to make NJIT a full member of Division I completed a specific timetable that required NJIT and its Department of Athletics to meet a series of annual benchmarks before proceeding to the next step in the process.

NJIT, which competed in NCAA Division II beginning in 1997-98 and in NCAA Division III for more than two decades before that, made its first formal move toward Division I reclassification with men's soccer paving the way in 2003. That move grew out of November 2002 meetings among then-President Robert A. Altenkirch, then Vice President Joel Bloom (who would later succeed Altenkirch as NJIT's President) and Director of Athletics Lenny Kaplan. From there came a

proposal for Dr. Altenkirch to the Board of Trustees, which unanimously approved in February 2003 a plan to reclassify men's soccer to Division I. Little more than two years later, the NCAA approved NJIT's proposal to begin advancing its entire program to Division I.

Men's soccer achieved active Division I status in 2005 and NJIT women's soccer became postseason-eligible in 2007. The remaining programs also began reclassifying in 2005, with active status taking longer for an entire athletics program than under the single-sport- per-gender track used for the two soccer programs.

In 2005-06 the lion's share of the competition for all but the men's soccer program came at the Division II level. In 2006-07, 2007-08, and 2008-09, NJIT's teams competed at the Division I level and fully complied with NCAA Division I rules, but were not eligible for championships at the top level.

Every facet of the program has been enhanced in the move to Division I

with a special emphasis placed on student-athlete welfare. Facility upgrades have gone along with support staff expansion. NJIT has built a model NCAA Division I rules compliance regimen within its athletics program and across the entire university.

Further, the Board of Trustees embraced the transition to Division I as part of the University's strategic plan to enhance the quality of campus life for all students.

NJIT's teams compete throughout the United States, taking on opponents from schools that are instantly recognizable for their stature in academics and athletics.



Shani Leacock

NJIT student-athletes have faced opponents every Ivy League institution, as well as the Patriot League, including Army and Navy, Buckell, Lafayette, and Lehigh.

The Highlanders have also competed against teams from every Division I conference with teams either in the Northeast or Mid-Atlantic States, including the America East, American Athletic, Atlantic 10, Big East, Colonial Athletic Association, Metro Atlantic Athletic, Mid-Eastern Athletic, and Northeast.

The eighth New Jersey-based institution in Division I, NJIT has competed against all seven of its home state peers, including Rutgers and Seton Hall.

In addition, Highlander teams have taken on squads from power conferences such as the ACC, Big Ten, Big 12, and Pac-12.

NJIT joined its first Division I conference in 2009-10 when the Great West became an all-sports conference and women's tennis captured back-to-back league titles in 2011 and 2012. In 2012-13, the final year of the GWC, NJIT men's basketball was regular season champion and NJIT women's basketball was GWC Tournament champion.

Moving on from the Great West, NJIT women's tennis joined the America East Conference in 2013-14 and finished as conference runner-up in 2014, the Highlanders' first try at the AEC title. NJIT men's soccer began play as a member of the Sun Belt Conference in 2014. Also in 2013-14, NJIT men's swimming became one of three new members in the Coastal Collegiate Swimming Association (CCSA).

In June 2015, NJIT and the Atlantic Sun Conference announced that the Highlanders would become the newest full member of the A-Sun. Founded in 1978 as the Trans America Athletic Conference, the conference took on its present name following the 2001 season.

The Atlantic Sun Conference will be the home of 13 of NJIT's varsity teams in 2015-16, with men's

soccer moving over from the Sun Belt in 2016-17, bringing the total of A-Sun teams from NJIT to 14.



Grace Gao



**The New Jersey Institute of Technology
teams play home games and practice in a
combination of facilities on campus and off.**

The on-campus facilities include Lubetkin Field at Mal Simon Stadium for outdoor sports and the Estelle and Zoom Fleisher Athletic Center for indoor sports. In addition, NJIT in 2011 opened is the Naimoli Family Athletic and Recreational Facility, a multi-purpose indoor facility on the site of the former outdoor tennis courts.

Off-campus venues include Bears and Eagles Riverfront Stadium, a professional minor league stadium that is the home of NJIT baseball; the Prudential Center, home of the NHL Devils and NBA Nets, which has hosted selected NJIT basketball games; and, Branch Brook Park in Newark and Van Cortlandt Park in the Bronx, home sites for NJIT cross country. All except for Van Cortlandt Park are less than two miles from the NJIT campus.

**LUBETKIN FIELD AT
MAL SIMON STADIUM**

The men's and women's soccer teams play their home games and practice on campus at Lubetkin Field at Malc Simon Stadium, a first-class venue for college soccer.

The field on the west end of NJIT's University Heights campus is an all-weather facility, with 24/7 availability for competition or practice. Outfitted with SprinTurf artificial grass in the summer of 2004, Lubetkin Field at Mal Simon Stadium also includes lighting for night contests, bleacher seating for more than 1,200 spectators, a press box and scoreboard.

The fully-enclosed facility, with its entrance a few feet opposite the entrance of the indoor Estelle and Zoom Fleisher Athletic Center, can take its place alongside any college soccer facility in the Northeast.

The home of Highlanders soccer served as the host site for the first-ever Great West

Conference women's soccer championship tournament in November 2009. Previously, NJIT hosted the three-day 2005 ECAC Division II women's soccer championship tournament.

In the fall of 2005, when the Northeast was hit with record rainfall, games went on without a hitch at Lubetkin Field, thanks to the quality of the surface. Indeed, with the rain disrupting schedules around the region, some crucial Big East contests involving Seton Hall were moved to NJIT's home field. Those games, too, went off without a hitch.

ESTELLE AND ZOOM FLEISHER ATHLETIC CENTER

The NJIT men's and women's basketball teams and men's and women's volleyball teams play their home games in the Fleisher Athletic Center gymnasium, while the swimming and diving team competes and practices in building's pool. The Fleisher Center also houses intercollegiate fencing, as well as all athletic department offices, varsity and general weight and fitness rooms, and the athletic training room.

In the summer of 2006, the gym underwent renovation to include installation of a new floor and baskets, new lighting, new sound system and new scoreboards, along with entirely new seating for approximately 1,500 spectators after the first phase of renovation. The back bay 'C gym' can be sectioned off from the main competition floor, making the facility useful for intramurals, physical education classes and campus recreation time, while being able to host multiple simultaneous events.



Top inset: Women's volleyball locker room at the (bottom) Estelle and Zoom Fleisher Athletic Center

A six-lane swimming pool in Fleisher Athletic Center is home to the NJIT swimming team. Fencing has its own area on the second floor of the building.

In addition to all athletic department offices, the Fleisher Athletic Center also houses the sports medicine staff in the Athletic Training Room and the varsity weight room, supervised by the head strength and condition coach. The building's third floor is home to a fitness center, which is open for use by all students and staff.

Athletics Facilities



THE NAIMOLI FAMILY ATHLETIC & RECREATION FACILITY

Opened in 2011, the facility is approximately 25,600 square feet. The Naimoli Family Center will be a multi-purpose space for athletics, community recreation, and gatherings involving large numbers of people.

Built on top of the old outdoor tennis courts adjoining the Fleisher Athletic Center, construction of this new building has been made possible, in part, by a generous gift from Vincent Naimoli '62, Chairman and CEO of Anchor Industries International and Chairman Emeritus/ Founder of the Tampa Bay Rays major league baseball team.

The facility houses courts for tennis and is available for other athletic and recreational activities, including practice for basketball and volleyball. It is heated and air conditioned, with flooring appropriate for the intended athletics and recreational activities.

Its indoor tennis courts offer vital year round practice and playing opportunities for NJIT's intercollegiate tennis teams, which have been consistently successful in the transition to Division I. In 2011, the women's tennis team became NJIT's first conference championship team in the Division I era.

BRANCH BROOK PARK AND VAN CORTLANDT PARK

A hallmark of the NJIT cross country program under veteran coach Al Alonso is its ability to host cross country competition that have made Highlander-sponsored races a popular destination for schools from throughout the New York/New Jersey area.

In 2009, NJIT hosted the Great West Conference championships at Van Cortlandt Park in the Bronx, and the course, which is home to some of the most prestigious events in the sport, is also the home venue for other annual NJIT-hosted races. Branch Brook Park, which is a public park of Essex County, reaches into several towns, including Newark, with the park entrance less than a mile from the NJIT campus.

TRACK FACILITIES

The NJIT men's and women's indoor track & field team trains at the Jersey City Armory which is home to a 6-lane indoor 200m track while the outdoor track & field team trains at the Nat Turner Park 6-lane outdoor 400m track.



NJIT Athletics Weight Room at Estelle and Zoom Fleisher Athletic Center



RED BULL ARENA

Located in Harrison, NJ, just across the Passaic River from Newark and less than three miles from the NJIT campus, the new home of the New York Red Bulls (opened in March 2010) sets the standard for soccer venues across North America.

The state-of-the-art soccer-specific facility is a major component of a multi-billion dollar development.

Red Bull Arena has a number of key design elements which give its seating bowl a close-to-the-action feeling and the unique stadium roof design extends from its leading edge over the entire seating bowl and then curve down to the concourse.

The overall seating capacity for soccer is 25,000, including 30 luxury suites (20 lower level and 10 upper level) and 1,116 club seats. Other amenities include three stadium clubs and two retail outlets.



BEARS AND EAGLES RIVERFRONT STADIUM

Bears and Eagles Riverfront Stadium, the \$30 million state-of-the-art home of professional baseball and, since 2004, the home of NJIT Highlanders baseball, officially opened to the public on July 16, 1999. With a seating capacity of 6,200, "The Den" affords fans an up-close view of the action. The ballpark also has 20 luxury suites, a picnic area, a party deck, a concert stage situated behind the outfield wall and a major league-caliber press box.

In December 2005, NJIT and the Bears held a joint press conference to herald a new partnership that includes a 10-year deal that extends Bears and Eagles Riverfront Stadium as the home of NJIT Highlanders baseball.

NJIT and the Atlantic Sun Conference



July 1, 2015 will go down as one of the most important days in the history of athletics at New Jersey Institute of Technology.

On that day, NJIT formally became a full member of the Atlantic Sun Conference, giving a Division I conference home to 14 of the 19 Highlander intercollegiate sports. For NJIT, which began the transition to NCAA Division I in 2003-04, becoming a championship-eligible member of the NCAA's highest level on September 1, 2009, membership in the A-Sun offers the University's student-athletes the full Division I experience for the first time.

About the Atlantic Sun Conference

For 37 years, the Atlantic Sun Conference has supported its member institutions in providing intercollegiate athletics programs committed to Building Winners for Life. The A-Sun meets its mission by maintaining the highest standards in academic and athletic achievement, creating a balance between student and athlete. Adding an emphasis on sportsmanship in the competitive arena and fostering leadership opportunities through community service, the A-Sun, its member institutions and its student-athletes aim for an overall educational experience that is successful in Building Winners for Life.

The 2014-15 season was another bright spot for the A-Sun for a number of reasons, as the conference and its member institutions celebrated record levels of excellence both on and off the field:

BUILDING

The student-athletes of the A-Sun consistently achieve academic accolades at all levels...

- Three institutions set record highs in the 2014-15 A-Sun

All-Academic honors. More than 68 percent of the student-athletes in the A-Sun posted a 3.0 grade point average or better, setting a new A-Sun record, including the nearly 86 percent of Lipscomb student-athletes honored as the Bisons claimed the league Academic Trophy for the second-straight year.

- For the sixth-consecutive year more than 60 percent of the A-Sun's teams were honored, a first for the conference. Also, for the third straight year at least three institutions recorded new highs in their final percentages of student-athletes honored academically.
- In addition to the institutional highs in the A-Sun All-Academic honors, a total of eight sports also recorded percentage highs and four sports also turned in totals of at least 80 percent of the teams recording a 3.0 GPA or better.
- Eleven total Atlantic Sun Conference male and female soccer programs received Team Academic honors from the NSCAA, and seven of eight A-Sun women's soccer teams were recognized by the NSCAA.
- A total of eleven A-Sun student athletes were honored with Capital One Academic All-District honors, with USC Upstate men's soccer player Marvin Schmiede earning All-American accolades based on his performance on and off the pitch.

WINNERS

... while performing at a high level in the competitive arena ...

- Three men's basketball teams earned invitations to postseason play with North Florida in the NCAA, while FGCU and USC Upstate both earned spots in the CIT. For the seventh-straight season, the conference earned a postseason victory as the Spartans defeated James Madison, 73-72 in the opening round.
- Ty Greene (USC Upstate) capped an exceptional career earning Player of the Year honors in the A-Sun, as well as national recognition by capturing the Lou Henson Award as the National Mid-Major Player of the Year.
- The 2015 A-Sun Men's Basketball Championship Final drew in a conference record 6,155 fans.
- FGCU women's basketball spent six weeks in the national rankings, en route to conference record-tying seventh seed in the NCAA Tournament. The Eagles posted the league's first women's basketball tournament victory since 1998 with a 75-67 opening round victory against Oklahoma State.

- Every A-Sun conference basketball game was aired on the ESPN family of networks. The Atlantic Sun accounted for 20 percent of ESPN3's college basketball inventory.
- USC Upstate softball advanced to the NCAA tournament for the third consecutive year, picking up a win against Fairfield. It marked the sixth consecutive time an A-Sun team has won an NCAA Regional match up.
- FGCU women's soccer hosted Auburn in the 2014 NCAA Tournament, marking the first time in school history an NCAA Championship event took place on campus and the first time an A-Sun women's soccer team hosted a tournament contest.

Atlantic Sun Conference
3370 Vineville Avenue, Suit 108-B
Macon, GA 31204-0790

Phone 478-474-3394
 Fax 478-474-4272
 Home page www.AtlanticSun.org

Commissioner: Ted Gumbart
 Associate Commissioner, Administration: Meredith Eaker
 Associate Commissioner, Operations: John Roberts
 Associate Commissioner, Compliance: Mike Hagen
 Assistant Commissioner, Media Relations: Patrick McCoy
 Director of Business Services: Pat Bush
 Director of Public Relations: Craig Threlkeld
 Director of Championships: Keith Hendrix
 Director of Media Relations: Johannes Schneider
 Director of Broadcast Services: Olivia Walter
 Assistant Director, Media Relations: Wilder Treadway
 Executive Assistant, Office Manager: Melody Battle

Additionally, 69 A-Sun teams in the 2013-14 measure posted at or above their sport-specific averages.

- The A-Sun also had 14 teams recognized by the NCAA for earning Public Recognition Awards, based on their most recent multi-year APR. These awards are given each year to teams with APRs in the top 10 percent in each sport. The A-Sun recorded at least 13 teams for the fourth straight year, and for the seventh consecutive year the A-Sun has had at least 10 teams earn the award. The A-Sun has totaled 124 Public Recognition Awards since they first were awarded in 2004-05.

- Jacksonville pitcher Brian Holcomb, a 17 year U.S. Navy veteran and wounded warrior, earned his first collegiate start at the age of 34 in 2015.

- For the first time in conference history two A-Sun Volleyball teams were awarded spots in the NCAA Tournament field of 64 with Jacksonville receiving the automatic bid and Lipscomb earning the league's first at large selection.
- Men's golf sent a record-tying four teams to the NCAA Regionals, giving the conference at least two teams in Regional play for eight-straight years.
- FGCU men's tennis head coach CJ Weber was named the Wilson/Intercollegiate Tennis Association Southeast Region Coach of the Year.
- North Florida's Donnie Dewees was selected in the second round by the Chicago Cubs, giving the A-Sun three players in the last three years selected in the first two rounds of the MLB First Year Player Draft (Max Pentecost, 2014 and Chris Anderson, 2013)

- The second annual A-Sun Winners for Life Team honored student-athletes from each of the eight member institutions who best represent the A-Sun's commitment to "Building Winners for Life." Those student-athletes maintain the highest standards in academic and athletic achievement; represent a true balance between student and athlete; exhibit and promote sportsmanship in the competitive experience; and exhibit leadership through community service on- and off-campus and at home.
- For the second consecutive year, seven Atlantic Sun Conference member institutions were named to the 2014 President's Higher Education Community Service Honor Roll, one with distinction.

The Atlantic Sun Conference is a NCAA Division I league with eight member institutions committed to Building Winners for Life. The A-Sun meets the challenge of maintaining the highest standards in academic and athletic achievement with a true balance between student and athlete. Headquartered in Macon, Ga., the A-Sun footprint reaches into seven of the top 50 media markets in the nation. The A-Sun includes a blend of the most prestigious and dynamic private and public institutions in the region: Florida Gulf Coast University, Jacksonville University, Kennesaw State University, Lipscomb University, New Jersey Institute of Technology, University of North Florida, University of South Carolina Upstate and Stetson University.

FOR LIFE!

...and preparing themselves to become valuable members of their community.

- A total of 14 Atlantic Sun Conference teams posted perfect scores for the 2013-14 academic year and 98 percent cleared the NCAA's standard benchmark in the NCAA's 11th annual Academic Progress Rate report. A total of 67 A-Sun teams met or exceeded the most recent four-year Division I APR of 978.

Head Coach Peter Volkert



With 348 wins and success at every stop in a women's volleyball coaching career that began at the college level in 1994, took on a new task when he was appointed as head coach of the NJIT women's volleyball program in the winter of 2014.

Volkert previously guided three college programs to success, beginning with Division II Pace University (1994-96) in Pleasantville, NY, and continuing at

the Division I level with Manhattan College (1997-2003) and Fordham University (2004-12), both in the Bronx.

At NJIT, he took over a program that after beginning Division I competition in 2006, produced its wins high at the top level with 18 in 2008. The 2009 Highlanders, in their first year of Division I championship eligibility finished 17-11 and led the nation in digs per set. After that, however, came four consecutive losing seasons, leading to the coaching change that brought Volkert to Newark.

In his first year leading the NJIT program, Volkert's Highlanders nearly doubled the previous season's win output with 13 victories and they went 7-5 over the last 12 matches.

Moving forward, Volkert aims for continued improvement while adding the new challenge of competing in the Atlantic Sun Conference, which sent two teams to the 2014 NCAA Division I Tournament.

A 1992 graduate of Concordia College in Bronxville, NY, where he played men's volleyball, Volkert earned a BA in History and Secondary Education at Concordia and two subsequent master's degrees from Iona College (MS in Multicultural Education, 1995; MS in Educational Administration and Supervision in 1998).

He began coaching girls volleyball at Good Counsel High School in White Plains, NY, in 1992 and also coached as an assistant and head coach in men's volleyball at Concordia.

Volkert entered the ranks of women's college volleyball at Pace in 1994. Taking over a program that had been 5-23 the year before his arrival, he guided Pace to a 78-26 mark in three seasons (1994-96).

In his first year, he led Pace to a conference championship and a berth in the 1994 NCAA Division II national tournament. In 1995, Pace made the ECAC postseason tournament and then returned to the NCAA national tournament in 1996, reaching the Division II Sweet Sixteen. His Pace team achieved a fifth-place regional ranking in Division II. Pace's record in his three seasons was 15-12, 33-7, and 30-7, respectively, for a combined 78-26.

Entering the Division I level with Manhattan for the 1997 season, Volkert guided the Jaspers to their first Metro Atlantic Athletic Conference championship and first NCAA Division I Tournament spot in 2000 with a 23-11 record, which earned him MAAC Coach of the Year laurels.

In 2002, Manhattan won a program-record 30 matches (30-3 overall) and returned to the NCAAs after claiming another MAAC title. His last Manhattan team, in 2003, won both of its MAAC tournament matches 3-0 for back-to-back championships and another spot in the NCAAs. His record in seven seasons with Manhattan was 132-99.

Volkert then moved across the Major Deegan Expressway to Fordham and the Atlantic 10 Conference. At Fordham, he inherited a program that had topped 11 wins just one time in the preceding 11 years and he led his new team to a 14-16 record in his first season (2004).

The following year, the Rams went 19-14 and in 2006 they won 21 matches (21-15), the program's highest total ever in its 38 years of existence. Coaching at Fordham from 2004-12, he led the Rams to A-10 postseason berths in 2006, 2007, 2008, and 2010. At 138-161, he has 21 more career wins than any of the other 10 coaches in Fordham history and his .462 winning percentage ranks third.

"We are very excited to add Peter to our coaching staff," said Kaplan, who was an Assistant Director of Athletics at Manhattan for part of Volkert's tenure as coach there. "I have known him for over 15 years. He is a proven head coach with a winning track record at his last three head coaching positions. We feel fortunate that he was available and interested in our position."

Immediately before taking the helm at NJIT, Volkert served in 2013 as an assistant coach at Iona, which was 13-5 in MAAC regular season competition, the best conference record ever for Iona since the MAAC began regular season championship play in 1991.

"I'm excited to be a head coach again and to have a second opportunity to work with Lenny (Kaplan)," said Volkert. "He worked closely with our program (at Manhattan) and I know he'll be supportive of the whole program as the athletic director here at NJIT."

Although his won-lost record is impressive, Volkert is not focused on that area, specifically. "The first thing is we want to put a positive process in place and match that with maximum effort," said the coach. "After that, we will give the players the tools to be in the right place at the right time on both offense and defense. If we do that, the team will get positive results."

Peter and his wife Stacey reside in Cortlandt Manor, NY with their three children Taylor (14), Trevor (12) and Austin (10).



Assistant Coach Ariel Scott



One of the greatest female players ever from New Jersey and a two-time NCAA National Champion at Penn State, joined the NJIT coaching staff as a full-time assistant coach ahead of the 2014 season.

She makes the transition to coaching from playing one season after wrapping up a run as one of the most dangerous outside hitters in all of college volleyball from 2010 to 2013, capped by her second NCAA title in December of 2013.

Before Penn State the 6-foot-4 outside hitter from Ridgewood, NJ, was the key player for Immaculate Heart Academy as it swept to three straight NJ Tournament of Champions titles when she was in high school. Along the way, she was Gatorade New Jersey Player of the Year and state Player of the Year in The Star-Ledger.

Moving on to Penn State, always one of the nation's elite programs, she became an immediate fixture in the starting lineup and was an American Volleyball Coaches Association All-America in each of her final three seasons (third team as a sophomore and first team as a junior and as a senior).

As she led her team to three consecutive Big Ten Conference championships, she was All-Big Ten three times and Big Ten Player of the Year in 2012.

Penn State capped her freshman year (2010) and her senior year (2013) with NCAA Division I National Championships and she was a national finalist for the Senior CLASS Award, which includes student-athletes from many sports.

She graduated in December 2013 with a BA in Advertising/Public Relations and worked as a pharmaceutical recruitment consultant following graduation.

Assistant Coach Anthony Valbrun



Valbrun, a graduate of NJIT (electrical engineering), has 30 years of experience playing and coaching volleyball. Indeed, he had two seasons as NJIT women's volleyball head coach in 2001 and 2002, when the program competed at the NCAA Division II level.

The seasoned coach returned to his alma mater in 2014 to coach after an absence of a decade, having led the women's team in 2001 and 2002 and served as a men's assistant for the Highlanders in 2003.

He later led the Division II program at nearby Bloomfield (NJ) College, guiding that team to four consecutive conference playoff berths, ending in 2010. At the club level, he was a boys' head coach with the Cut Shot Volleyball Club and he has served as head coach of the Atlantic Valley Volleyball Club in Westfield, NJ, since 2007, while adding duties as boys' program director in 2013.

As a player, Valbrun was a member of the national team in his native Haiti and competed internationally, including in the 1988 Pan American Games. He was a two-year starter on the men's team at NJIT.

He resides in Edison, NJ.

Volunteer Assistant Coach Marc Solondz



Marc Solondz joined the NJIT women's volleyball coaching staff as a volunteer assistant in August 2015, having most recently been a head coach at two New York NCAA Division III programs.

Most recently, Solondz was head coach at Purchase College (State University of New York) in 2013 and 2014.

Before Purchase, he guided New York University Polytechnic to 95 wins in five seasons, including three Skyline Conference championships. The Blue Jays also reached the conference finals two other times. During his time with NYU Poly, Solondz coached players who compiled 11 all-conference awards, plus three Skyline Players of the Year and four conference Rookies of the Year.

In 2009, he led Poly to an NCAA Division III tournament berth, the first in school history in any sport. The team repeated in 2010 and 2011, advancing to the NAACs each season.

Prior to taking over the head coaching position at Poly, he spent two seasons as the school's assistant coach in both women's volleyball and men's volleyball.

A resident of Union, NJ, and graduate of Livingston (NJ) High School, Solondz has also coached youth soccer and was assistant coach of girls' volleyball at Solomon Schecter High School in West Orange.

When he was an undergraduate student at Indiana University in Bloomington, IN, he coached women's cycling teams.

Outside of athletics, he was employed in retail management and film production from 1986 to 1992. He entered the field of property management in 1992 and since 1998 has been a managing member of the firm Viking Properties, LLC, managing multiple apartment complexes, as well as retail and commercial locations.

2015 Roster

NO.	NAME	YR.	HT.	POS.	HOMETOWN/HIGH SCHOOL
3	Tess Albyn	So.	6-0	OH	Centennial, CO / Arapahoe
4	Alyssa Armada	So.	5-10	S	Chicago, IL / Carmel Catholic (Mundelein, IL)
5	Emily Krachenfels	Fr.	5-7	S	Bolingbrook, IL / Neuqua Valley (Naperville, IL)
10	Marija Tomic	Fr.	6-0	OH	Nis, Serbia / Nis
11	Anneka Harris	Jr.	5-11	MB	Kingston, Jamaica / Excelsior High
12	Adriana Nieto	Fr.	5-6	L	Tao Alta, Puerto Rico / Academia Discipulos de Cristo (Bayamon, PR)
13	Jovana Baotic	Fr.	6-0	MB	Belgrade, Serbia / Zemunski Gimnazija
14	Danica Vukotic	Sr.	6-0	OH/RS	Backi Jarak, Serbia / Isidora Sekulic (Novi Sad)
17	Katherine Gerton	Jr.	5-11	RS	Lorton, VA / South County Secondary School
18	Nina Vukotic	Sr.	6-0	M	Backi Jarak, Serbia / Isidora Sekulic (Novi Sad)
19	Grace Gao	Jr.	6-1	S	Baotou, China / Baotou No. 1



2014 Statistics and Results

Overall record: 13-22 Conf: 0-0 Home: 6-3 Away: 4-10 Neutral: 3-9

#	Player	sp	Attack					Set		Serve			re	Dig		Blocking						points
			k	k/s	e	ta	pct	a	a/s	sa	se	sa/s		dig	dig/s	bs	ba	total	blk/s	be	bhe	
20	Fran Edmondson	124	336	2.71	172	1060	.155	16	0.13	41	53	0.33	-	311	2.51	5	79	84	0.68	5	2	421.5
14	Danica Vukotic	112	332	2.96	203	1021	.126	27	0.24	30	71	0.27	-	266	2.38	7	28	35	0.31	10	0	383.0
18	Nina Vukotic	116	263	2.27	169	902	.104	19	0.16	30	39	0.26	-	266	2.29	4	25	29	0.25	8	1	309.5
12	Valerie Carroll	122	231	1.89	74	581	.270	10	0.08	26	25	0.21	-	64	0.52	4	87	91	0.75	14	2	304.5
13	Kat Janssen	69	97	1.41	35	242	.256	76	1.10	7	8	0.10	-	49	0.71	3	48	51	0.74	7	3	131.0
3	Tess Albyn	59	76	1.29	33	211	.204	3	0.05	6	19	0.10	-	29	0.49	2	30	32	0.54	5	2	99.0
4	Alyssa Armada	114	44	0.39	15	154	.188	1043	9.15	20	26	0.18	-	248	2.18	4	56	60	0.53	11	69	96.0
1	Shani Leacock	35	35	1.00	17	93	.194	0	0.00	0	0	0.00	-	4	0.11	4	32	36	1.03	6	0	55.0
7	Camilla Tinari	114	3	0.03	5	28	-.071	71	0.62	16	37	0.14	-	395	3.46	0	0	0	0.00	0	2	19.0
17	Katherine Gerton	2	2	1.00	1	5	.200	0	0.00	0	0	0.00	-	0	0.00	0	0	0	0.00	0	0	2.0
19	Grace Gao	9	1	0.11	0	3	.333	48	5.33	1	2	0.11	-	10	1.11	0	2	2	0.22	0	3	3.0
11	Vanessa Marques	6	0	0.00	0	0	.000	0	0.00	1	0	0.17	-	2	0.33	0	0	0	0.00	0	0	1.0
8	Katie Goswick	60	0	0.00	1	4	-.250	15	0.25	15	16	0.25	-	140	2.33	0	0	0	0.00	0	2	15.0
9	Kayleigh McCabe	6	0	0.00	0	0	.000	0	0.00	0	1	0.00	-	1	0.17	0	0	0	0.00	0	0	0.0
5	Mandy Garbarino	1	0	0.00	0	0	.000	0	0.00	0	1	0.00	-	0	0.00	0	0	0	0.00	0	0	0.0
	NJIT	125	1420	11.36	725	4304	.161	1328	10.62	193	298	1.54	214	1785	14.28	33	387	226.5	1.81	66	86	1839.5
	Opponents	125	1472	11.78	670	4237	.189	1363	10.90	214	230	1.71	193	1869	14.95	48	369	232.5	1.86	50	51	1918.5

Team Statistics	NJIT	OPP	Date	Opponent	Score	Score by set	Att.
ATTACK			Aug 29	vs Coppin State	L 0-3	23-25,20-25,19-25	35
Kills	1420	1472	Aug 29	at La Salle	w 3-1	20-25,25-15,26-24,25-17	57
Errors	725	670	Aug 30	vs Manhattan	L 0-3	15-25,21-25,22-25	129
Total Attacks	4304	4237	Aug 30	vs Loyola	w 3-1	25-15,25-19,18-25,25-21	129
Attack Pct	.161	.189	Sep 03	SAINT PETER'S	w 3-1	25-22,12-25,25-13,25-22	300
Kills/Set	11.4	11.8	Sep 05	at St. Francis Brooklyn	L 0-3	25-27,21-25,19-25	115
SET			Sep 06	vs Manhattan	L 1-3	25-23,25-27,9-25,26-28	50
Assists	1328	1363	Sep 06	vs Hofstra	L 0-3	17-25,16-25,17-25	85
Attempts	4342	4251	Sep 12	at Rhode Island	L 0-3	21-25,21-25,18-25	250
Assist Pct	.306	.321	Sep 12	vs Rutgers	L 0-3	14-25,17-25,19-25	65
Assists/Set	10.6	10.9	Sep 13	vs Cincinnati	L 0-3	12-25,17-25,18-25	50
SERVE			Sep 17	at Fairleigh Dickinson	w 3-1	25-22,21-25,25-20,28-26	472
Aces	193	214	Sep 19	vs Providence	L 2-3	16-25,25-22,21-25,26-24,12-15	16
Errors	298	230	Sep 20	vs HARTFORD	L 1-3	16-25,25-19,14-25,16-25	117
Attempts	2642	2864	Sep 20	at CCSU	L 0-3	10-25,12-25,9-25	146
Serve Pct	.887	.920	Sep 27	at UMass Lowell	L 1-3	25-23,23-25,21-25,20-25	207
Aces/Set	1.5	1.7	Sep 28	at New Hampshire	L 0-3	17-25,22-25,26-28	190
SERVE RECEPTIONS			Oct 01	at Lafayette	w 3-0	25-20,25-20,25-19	101
Errors	214	193	Oct 03	at Delaware State	w 3-0	25-22,25-21,25-17	170
Errors/Set	1.7	1.5	Oct 11	ROBERT MORRIS	L 2-3	25-21,13-25,18-25,26-24,10-15	500
Attempts	2627	2336	Oct 08	at Saint Peter's	L 1-3	25-19,18-25,20-25,16-25	192
Reception Pct	.919	.917	Oct 15	at Army	L 0-3	10-25,23-25,15-25	105
DEFENSE			Oct 18	LEHIGH	L 0-3	17-25,22-25,14-25	200
Digs	1785	1869	Oct 21	IONA	w 3-2	25-15,21-25,25-19,23-25,17-15	300
Digs/Set	14.3	15.0	Oct 24	DELAWARE STATE	w 3-0	25-22,25-19,25-22	300
BLOCKING			Oct 29	at Rider	L 0-3	20-25,16-25,23-25	209
Block Solo	33	48	Oct 31	HAMPTON	L 0-3	22-25,19-25,23-25	322
Block Assist	387	369	Nov 05	FAIRLEIGH DICKINSON	w 3-1	27-29,25-16,30-28,25-17	200
Total Blocks	226.5	232.5	Nov 07	COPPIN STATE	w 3-1	25-15,25-22,17-25,25-14	312
Blocks/Set	1.8	1.9	Nov 14	HOWARD	w 3-0	25-22,28-26,25-15	80
Block Errors	66	50	Nov 15	at Bucknell	L 0-3	18-25,17-25,21-25	85
Ball handling errors	86	51	Nov 21	vs Omaha	L 1-3	23-25,25-22,17-25,19-25	46
ATTENDANCE			Nov 21	vs Incarnate Word	w 3-1	21-25,27-25,25-17,25-19	48
Total	2514	2375	Nov 22	vs UMass Lowell	w 3-0	25-20,25-22,25-18	31
Dates/Avg Per Date	9/279	14/170	Nov 22	at Grand Canyon	L 2-3	25-20,26-28,25-23,18-25,13-15	76
Neutral site #/Avg	12/67						
Current win streak	0	-					
Home win streak	3	-					

Record in 2-set matches:0-0 • Record in 3-set matches:5-14

Records Book — Division I School Records

Sets Played — Career

454	Sabrina Baby	2006-09
444	Katrina Hornstein	2006-09
429	Kristy Haeckel	2006-09
368	Janet Snell	2009-12
360	Baaba Hughes	2007-10
339	Audrey Snell	2008-11
331	Erica Schultz	2007-09

Sets Played — Season

140	Agnieszka Pregowska	2007
140	Sabrina Baby	2007
138	Erica Schultz	2007
136	Katrina Hornstein	2007

Kills — Career

1,038	Janet Snell	2009-12
1,035	Katrina Hornstein	2006-09
1,016	Kristy Haeckel	2006-09
927	Renata Pandolfo	2008-12
886	Baaba Hughes	2007-10
814	Danica Vukotic	2012-pres.
618	Fran Edmondson	2012-14
610	Agnieszka Pregowska	2006-08

Kills — Season

409	Janet Snell	2011
357	Katrina Hornstein	2007
352	Kristy Haeckel	2007
348	Renata Pandolfo	2009
343	Renata Pandolfo	2008
341	Agnieszka Pregowska	2007

Assists — Career

2,506	Erica Schultz	2007-09
2,425	Anna Mercado	2009-12
1,636	Danielle Thompson	2006-08

Assists — Season

1043	Alyssa Armada	2014
1002	Anna Mercado	2011
966	Danielle Thompson	2006
887	Erica Schultz	2007
830	Erica Schultz	2008
799	Erica Schultz	2009

Service Aces — Career

192	Sabrina Baby	2006-09
127	Agnieszka Pregowska	2006-08
113	Katrina Hornstein	2006-09
97	Renata Pandolfo	2008-12
76	Kristy Haeckel	2006-09

Service Aces — Season

71	Sabrina Baby	2007
57	Sabrina Baby	2006
50	Agnieszka Pregowska	2007
46	Renata Pandolfo	2008
45	Katrina Hornstein	2007
45	Sabrina Baby	2008

Digs — Career

1,927	Sabrina Baby	2006-09
1,742	Renata Pandolfo	2008-12
1,215	Katrina Hornstein	2006-09
1,126	Audrey Snell	2008-11
961	Janet Snell	2009-12

Digs — Season

795	Sabrina Baby	2007
685	Renata Pandolfo	2012
608	Sabrina Baby	2009
542	Sabrina Baby	2008
522	Audrey Snell	2011
423	Renata Pandolfo	2008
414	Audrey Snell	2010

Total Blocks — Career

289	Kristy Haeckel	2006-09
253	Valerie Carroll	2010-14
230	Agnieszka Pregowska	2006-08
177	Fernanda Lima	2009-11
139	Rebecca Wilkinson	2006-07

Total Blocks — Season

111	Agnieszka Pregowska	2007
91	Valerie Carroll	2014
86	Kristy Haeckel	2008
85	Valerie Carroll	2012
	Rebecca Wilkinson	2007
81	Fran Edmondson	2014
82	Kristy Haeckel	2006
77	Kristy Haeckel	2007

Total Points — Career

1,272	Kristy Haeckel	2006-09
1,214	Katrina Hornstein	2006-09
1,127	Agnieszka Pregowska	2006-08

Total Points — Season

462	Agnieszka Pregowska	2007
422	Renata Pandolfo	2008
421	Fran Edmondson	2014
412	Kristy Haeckel	2007
406	Renata Pandolfo	2009
383	Danica Vukotic	2014
377	Kristy Haeckel	2006

Records listed are for seasons in Division I competition only (competition began in 2006 season). Some individuals listed spent part of their careers in Division II competition.



Alyssa Armada

Records Book — Division I Superlatives: Invidual

Kills

30, Kristy Haeckel vs. Maryland Eastern Shore (5 sets) (11.4.06)
29, Danica Vukotic at Central Connecticut State (4sets) (9.21.13)
19, Renata Pandolfo at Chicago State (3 sets) (11.14.09)

Assists

63, Danielle Thompson vs. Maryland Eastern Shore (5 sets) (11.4.06)
50, Alyssa Armada at Fairleigh Dickinson (4 sets) (9.17.14)
42, Erica Schultz vs. Providence (3 sets) (11.21.08)

Aces

8, Sabrina Baby vs. Providence (5 sets) (10.26.07)
6, Kristy Haeckel vs. Manhattan (3 sets) (9.1.06)
6, Sabrina Baby vs. Quinnipiac (3 sets) (10.3.06)
6, Kristy Haeckel vs. Winston-Salem State (3 sets) (10.20.06)
6, Agnieszka Pregowska vs. St. Francis (NY) (9.5.08)
6, Renata Pandolfo vs. St. Francis Brooklyn (9.5.08)

Digs

44, Renata Pandolfo at Lafayette (5 sets) (10.23.12)
45, Sabrina Baby at South Dakota (4 sets (11.5.09)
34, Renata Pandolfo at Temple (3 sets) (9.12.12)

Block Solo

7, Agnieszka Pregowska vs. Sacred Heart (5 sets) (10.27.07)
6, Renata Pandolfo vs. American (5 sets) (10.11.08)

Block Assist

8, Valerie Carroll at Fairleigh Dickinson (4 sets) (9.14.14)
7, Kristy Haeckel at Delaware State (4 sets) (10.21.06)

Total Blocks

12, Agnieszka Pregowska vs. Sacred Heart (5 sets) (10.27.07)
9, Kristy Haeckel vs. Hartford (4 sets) (9.9.06)
7, Kristy Haeckel vs. Bryant (3 sets) (11.1.08)

Points

33, Kristy Haeckel vs. Maryland Eastern Shore (5 sets) (11.4.06)
23.5, Kristy Haeckel at Delaware State (4 sets) (10.21.06)
23.5, Katrina Hornstein vs. Utah Valley (4 sets) (9.28.07)
25, Renata Pandolfo at Chicago State (3 sets) (11.14.09)

Team

NJIT

82 vs. Maryland Eastern Shore (11.4.06)
77 vs. Maryland Eastern Shore (11.4.06)
17 vs. Saint Francis Brooklyn (9.28.07)
124 vs. South Dakota (11.5.09)
9 at South Dakota (10.25.09)
20 at Chicago State (10.15.11)
15 vs. Seton Hall (10.7.10)
95 vs. Maryland Eastern Shore (11.4.06)

Kills
Assists
Aces
Digs
Block Solo
Block Assist
Total Blocks
Points

Opponents

85, Seton Hall (9.5.07)
77, Seton Hall (9.5.07)
23, Delaware State (11.10.07)
114, Utah Valley (10.15.09)
9, Delaware State, (11.8.08)
30, Howard (10.27.07)
34, Howard (10.27.07)
105, Columbia (10.29.07)

All-Time vs. Division I Opponents

(matches played in NJIT's Division I era—began 2006)

Akron	1-0
American	0-4
Arkansas	0-1
Army	0-6
Boston College	0-1
Bryant	1-0
Bucknell	1-1
Butler	0-1
Cal State-Bakersfield	0-2
Central Connecticut State	1-5
Chicago State	9-2
Cincinnati	0-1
Columbia	0-4
Coppin State	2-2
Cornell	1-0
Dartmouth	1-2
Delaware State	3-2
Fairfield	0-2
Fairleigh Dickinson	6-7
Fordham	1-3
Florida Gulf Coast	0-0
Georgetown	0-1
Grambling State	1-0
Grand Canyon	0-1
Hampton	0-1
Hartford	3-4
Harvard	0-2
Hofstra	1-4
Holy Cross	0-1
Houston Baptist	2-8

Howard	4-2
Iona	1-2
Incarnate Word	1-0
Jacksonville	0-0
Kennesaw State	0-0
Lafayette	7-2
La Salle	4-1
Lehigh	2-2
Lipscomb	0-0
LIU Brooklyn	0-3
Loyola (MD)	2-1
Maine	0-1
Manhattan	4-2
Marist	1-3
Maryland	0-1
Maryland Eastern Shore	0-2
Morgan State	1-1
Navy	0-1
Nebraska at Omaha	0-1
New Hampshire	0-1
Northeastern	0-0
North Dakota	0-6
North Florida	0-0
North Texas	0-1
Oral Roberts	0-1
Penn	0-0
Princeton	0-1
Providence	3-3
Quinnipiac	3-0
Radford	0-1

Rhode Island	0-1
Rider	0-2
Robert Morris	0-2
Rutgers	0-3
Sacred Heart	3-3
Saint Francis (PA)	1-1
Saint Peter's	8-3
St. Francis Brooklyn	8-3
St. John's	0-1
San Francisco	0-1
Seton Hall	1-5
South Dakota	1-4
Stetson	0-0
Stony Brook	1-0
TCU	0-1
Temple	0-2
Texas-El Paso	0-1
Texas-Pan American	4-5
Tulsa	0-2
USC Upstate	0-0
Utah Valley	1-10
UMass Lowell	1-1
UMBC	0-3
Valparaiso	0-0
Virginia Tech	0-2
Wagner	6-0
Winston-Salem State	1-0
Yale	0-2

2015 opponents in bold

NCAA National Statistical Leaders

1989 Division III

Yanet Gonzalez — service aces per set

1991 Division III

Kathy Eng — service aces per set

2004 Division II

Angie Casado — ranked 38th in aces per set

Angie Casado — ranked 4th in kills per set

2005 Division II

Agnieszka Pregowska — ranked 4th in kills per set

2009 Division I

Sabrina Baby — National Statistical Champion in digs per set (6.27 dps)

NJIT — National Statistical Champion in digs per set (19.81 dps)

2012 Division I

Renata Pandolfo — ranked 4th in digs per set (6.12 dps)



All-Time Honors

DIVISION III ERA

POSTSEASON APPEARANCES

ECAC Metro NY/NJ

1987 (semifinals)
1988 (semifinals)

CONFERENCE CHAMPIONSHIP

WIAC

1985, 1986, 1988

IAC

1986, 1988

IAC PLAYER OF THE YEAR

1988 – Sonia Zacher

GTE REGIONAL ACADEMIC ALL-AMERICA

1988 – Sonia Zacher

ALL-WIAC

1984

Eileen Begasse
Marilyn Dawson
Heidi Hartung

1985

Eileen Begasse
Marilyn Dawson
Liz Goldrick

1986

Marilyn Dawson
Claire Nicolaou

1987

Claire Nicolaou

1988

Denise Corsaro
Liz Goldrick
Gina Ochs (2nd)
Sonia Zacher

1989

Denise Corsaro
Kathy Eng (2nd)
Ursula Fukazawa (2nd)
Yanet Gonzalez

1990

Kathy Eng
Yanet Gonzalez
Gina Ochs
Joanie Pratt

1991

Kathy Eng
Connie Krzeminski (HM)

1992

Kathy Eng

1995

Wendy Gruenewald (HM)
Lenny Jiminez

ALL-IAC

1986

Denise Corsaro
Marilyn Dawson
Liz Goldrick (2nd)
Claire Nicolaou
Regina Rygelis (2nd)

1987

Liz Goldrick
Claire Nicolaou
Gina Ochs (2nd)
Sonia Zacher (2nd)

1988

Denise Corsaro
Liz Goldrick
Yanet Gonzales (2nd)
Gina Ochs
Sonia Zacher

1989

Denise Corsaro
Kathy Eng (2nd)
Ursula Fukazawa (2nd)
Yanet Gonzalez

1990

Kathy Eng
Ursula Fukazawa
Yanet Gonzalez
Gina Ochs
Joanie Pratt

1991

Kathy Eng
Connie Krzeminski
Kathy Liu (HM)

1992

Kathy Eng
Kathy Liu (2nd)
Tulia Rios (2nd)
Edyta Wrona

1993

Donna King (2nd)

1995

Wendy Gruenewald (2nd)
Lenny Jiminez (2nd)

All-Jersey 9

1990

Kathy Eng

1991

Kathy Eng
Connie Krzeminski

1992

Kathy Eng

1993

Donna King
Clara Ponton

DIVISION II ERA

CACC NEWCOMER OF THE YEAR

2004

Angie Casado

ALL-CACC

2005

Agnieszka Pregowska

DIVISION I ERA

NCAA NATIONAL STATISTICAL CHAMPION INDIVIDUAL DIGS PER SET

2009

Sabrina Baby
(1st year NJIT players are eligible for DI championship)

TEAM DIGS PER SET

2009

NJIT
(1st year NJIT is eligible for DI championship)

ACADEMIC ALL-AMERICA CoSIDA/ESPN The Magazine Division I

2009

Sabrina Baby (national 3rd team)
1st NJIT student-athlete chosen in the Division I era)

GWC SPORTSMANSHIP AWARD (all sports)

2009-10

Sabrina Baby

DIVISION I ALL-INDEPENDENT TEAM

2007

Sabrina Baby (2nd)
Kristy Haeckel (2nd)
Agnieszka Pregowska (2nd)
Erica Schultz (HM)

DIVISION I INDEPENDENT ALL-ACADEMIC

2006

Emese Gyuricza
Agnieszka Pregowska

2007

Sabrina Baby
Katrina Hornstein
Danielle Thompson

2008

Sabrina Baby
Katrina Hornstein

GREAT WEST CONFERENCE DEFENSIVE PLAYER OF THE YEAR

2009

Sabrina Baby

2012

Renata Pandolfo

ALL-GREAT WEST CONFERENCE

2009

Sabrina Baby (1st)
Renata Pandolfo (1st)

2011

Janet Snell (2nd)

2012

Janet Snell (1st)
Danica Vukotic (1st)
Renata Pandolfo (2nd)

GWC ALL-NEWCOMER

2009

Fernando Lima

2012

Danica Vukotic

GWC ALL-ACADEMIC

2008

Sabrina Baby
Erica Schultz
Katrina Hornstein
(note: although GWC competition did not begin until 2009-10, the conference began an awards program that included all-academic in 2008-09)

2009

Sabrina Baby
Erica Schultz
Katrina Hornstein

2011

Cathy Leung
Gretchen Von Koenig
Anna Mercado

2012

Anna Mercado
Cathy Leung
Katie Goswick
Camilla Tinari

Program History

NCAA Division III

Year	Overall W-L	WIAC	IAC	Head Coach	Captains	MVP
1982	1-11	---	---	Oleg Moiseenko	Heidi Hartung, Becky Miranda	
1983	6-15	---	---	Dave DeNure	Heidi Hartung, Becky Miranda	Sharon Ingram
1984	10-5	2nd	---	Dave DeNure	Heidi Hartung, Becky Miranda	Becky Miranda
1985	14-6	1st	2nd	Dave DeNure	Eileen Begasse, Marilyn Dawson	Marilyn Dawson
1986	24-8	1st	1st	Dave DeNure	Marilyn Dawson	Clairie Nicolaou
1987	22-8	2nd	2nd	Dave DeNure		Clairie Nicolaou
<i>1987 Postseason: ECAC NY/NJ semifinals</i>						
1988	26-6	1st	1st	Dave DeNure	Liz Goldrick, Felicia Mays	Liz Goldrick
<i>1988 Postseason: ECAC NY/NJ semifinals</i>						
1989	15-17	2nd	2nd	Dave DeNure	Denise Corsaro	Denise Corsaro
1990	23-12	2nd	2nd	Dave DeNure	Kathy Eng	Kathy Eng
1991	10-16			Dave DeNure		Kathy Eng
1992	11-13	2nd	2nd	Kerry Keith	Kathy Eng	Kathy Eng
1993	7-20		3rd	Bob Fordi	Diana Nieto, Bonnie Tai	Donna King
1994	9-14	3rd	2nd	Bob Fordi	Lenny Jiminez, Bonnie Tai	Lenny Jiminez
1995	8-19			Bob Fordi	Sandra Caceras	Lenny Jiminez
1996	No team					
1997	No team					

NCAA Division II

Year	Record		Head Coach	Captains	MVP
		NYCAC			
1998	0-10	12th	Jon Bednasz		Melsha Winchester
1999	1-17	12th	Jon Bednasz		Melsha Winchester
		CACC			
2000	0-16	8th	Manny Del Rio	Nikiesha Joseph	Carisa Butensky
2001	0-20	8th	Anthony Valbrun	Nikeisha Joseph	Marta Oporska
2002	0-18	9th	Anthony Valbrun	Eliana Lara, Stacy Waldburger	Chevanese Samms
2003	0-21	10th	Pavlina Klimova	Dolores Martinez	Dolores Martinez
2004	13-13	5th	Pavlina Klimova	Dolores Martinez	Angie Casado
2005	9-20	8th	Ryan McNeil	Danielle Thompson	Agnieszka Pregowska

NCAA Division I (reclassification years 2006-08)

Year	Record		Head Coach	Captains	MVP
2006	10-21	---	Ryan McNeil	Agnieszka Pregowska, Danielle Thompson	Kristy Haeckel
2007	13-24	---	Ryan McNeil	Agnieszka Pregowska, Sabrina Baby	Katrina Hornstein
2008	18-16	---	Ryan McNeil	Agnieszka Pregowska, Sabrina Baby	Katrina Hornstein
		GWC			
2009	17-11	3rd	JR Martins	Sabrina Baby, Renata Pandolfo	Sabrina Baby
2010	4-22	6th	JR Martins	Game Captains	
2011	11-18	4th	JR Martins	Game Captains	
2012	12-16	4th	JR Martins	Game Captains	Janet Snell
2013	7-15	--	JR Martins	Game Captains	Fran Edmondson
2014	13-22	--	Peter Volkert	Valerie Carroll, Camilla Tinari	Valerie Carroll

Historical Notes:

--Competing in NCAA Division III at the time it started women's volleyball in 1982, NJIT athletics remained at that level through the 1997. However, there were not teams in 1996 and 1997. For much of the time it had teams in Division III, NJIT held membership in both the WIAC (Women's Intercollegiate Athletic Conference) and IAC (Independent Athletic Conference; the IAC sponsored championship competition in sports for both genders).

--In 1997, moving to NCAA Division II, NJIT joined the New York Collegiate Athletic Conference, which later changed its name to the current East Coast Conference. NJIT moved from the NYCAC to the CACC (Central Atlantic Collegiate Conference) in 2000 and remained there until reclassifying to NCAA Division I.

--From 2006 to 2008, NJIT was a Division I Independent. In 2009, when the GWC (Great West Conference) became a multi-sport league, it sponsored championship play in women's volleyball, continuing through the 2012 season. The GWC ceased operations on July 1, 2013

Year-by-Year

1982 (1-10)

9/29	at Seton Hall	L	0-2
9/29	vs. Lehigh (at Seton Hall)	L	0-2
10/6	at Rutgers-Newark	L	1-2
10/11	HUNTER	L	1-2
10/13	at William Paterson	L	0-2
10/13	vs. Queens (at William Paterson)	L	0-2
10/15	at Rutgers-Livingston	L	1-3
10/22	at Stockton	L	1-3
10/26	at Kean	L	0-2
	WILLIAM PATERSON	L	0-2
	CO. COLLEGE OF MORRIS	W	3-2

Coach: Oleg Moseenko

1983 (6-15)

9/21	at St. Elizabeth	W	3-1
9/24	at FDU Madison	W	2-0
9/24	vs. Moravian (PA)		
	(at FDU Madison)	L	0-2
9/24	vs. St. Elizabeth (at C.S.E)	L	2-1
9/28	SUNY OLD WESTBURY	W	3-0
10/5	at Hunter	L	2-1
10/5	vs. Dowling (at Hunter)	L	0-2
10/7	RUTGERS-NEWARK	L	2-3
10/8	at Stockton St.	L	0-2
10/8	vs. Jersey City (at Stockton)	W	2-0
10/11	at Upsala	L	0-3
10/13	KEAN	L	2-3
10/19	SETON HALL	L	0-3
10/21	vs. Clarion (PA) (at ESU)	L	0-2
10/21	vs. La Salle (at ESU)	L	0-2
10/22	vs. Central Connecticut (at ESU)	L	0-2
10/22	vs. WM Paterson (at ESU)	L	0-3
10/22	vs. Scranton (at ESU)	W	2-0
10/26	WILLIAM PATERSON	L	0-3
11/1	at Co. College of Morris	L	2-3
11/9	at SUNY Old Westbury	W	3-2

Coach: Dave DeNure

1984 (12-15)

9/19	at St. Elizabeth*	W	3-2
9/22	at St. Elizabeth	W	2-0
9/22	vs. Stockton (at St. Elizabeth)	L	1-2
9/22	vs. Moravian (at St. Elizabeth)	L	0-2
9/25	at Caldwell*	W	3-0
9/27	at SUNY Old Westbury	W	3-1
9/29	vs. Albright (at Upsala)	W	2-1
9/29	vs. Hunter (at Upsala)	L	0-2
9/29	at Upsala	L	0-2
9/29	vs. Gallaudet (at Upsala)	L	0-2
10/1	at Bloomfield	W	3-1



Tess Albyn

10/3	at Rutgers-Newark	L	0-2
10/3	vs. Bloomfield		
	(at Rutgers-Newark)	W	2-0
10/10	at Ramapo*	W	3-0
10/12	vs. Army (at ESU)	L	0-2
10/12	vs. Cortland (at ESU)	L	0-2
10/13	vs. Marywood (at ESU)	L	0-2
10/13	vs. Scranton (at ESU)	L	0-2
10/13	vs. Wilkes (at ESU)	L	0-2
10/16	vs. CCNY (at Hunter)	L	0-2
10/16	at Hunter	L	0-2
10/18	vs. Centenary (at FDU Madison)	W	2-0
10/18	at FDU Madison*	W	3-0
10/23	at Centenary (NJ) *	W	3-0
10/25	vs. Ramapo		
	(at William Paterson)	W	2-0
10/25	at William Paterson	L	0-2
11/2	UPSALA*	L	1-3

*W.I.A.C Conference matches

W.I.A.C Conference (5-1)

Coach: Dave DeNure

1985 (15-8-4)

9/18	ST. ELIZABETH*	W	3-0
9/21	vs. St. Elizabeth (at FDU)	W	2-0
9/21	vs. Stockton St. (at FDU)	W	2-0
9/21	vs. Marywood (at FDU)	W	2-0

9/21	vs. Muhlenburg (at FDU)	L	1-2
9/24	HUNTER	L	0-3
10/1	at Bloomfield	W	3-1
10/5	MT. ST. VINCENT	T	1-1
10/5	BARUCH	T	1-1
10/5	JERSEY CITY	W	2-0
10/5	RAMAPO	T	1-1
10/5	DOWLING	L	0-2
10/9	RAMAPO*	L	1-3
10/12	vs. St. Joseph's (at Old Westbury)	T	1-1
10/12	vs. Hunter (at Old Westbury)	L	0-2
10/12	vs. Mt. St. Vincent		
	(at Old Westbury)	L	0-2
10/16	OLD WESTBURY	W	3-1
10/20	STEVENS TECH	W	2-0
10/20	NY POLYTECH	W	2-0
10/20	WESTERN CONN.	L	0-2
10/20	NY MARITIME	W	2-0
10/20	WESTERN CONN.	L	0-2
10/22	CENTENARY*	W	3-1
10/24	FDU-MADISON*	W	3-1
10/29	CALDWELL	W	2-0
10/30	at Co. College of Morris	W	3-1
11/2	UPSALA*	W	3-2

*W.I.A.C Conference matches

W.I.A.C Conference (4-1)

Coach: Dave DeNure

1986 (24-8)

9/20	at FDU-Madison*	W	2-0
9/20	vs. Muhlenburg (at FDU-Madison)	L	1-2
9/20	vs. Mt. St. Vincent's		
	(at FDU-Madison)	W	2-0
9/20	vs. Albright (at FDU-Madison)	W	2-0
9/20	vs. Marywood (at FDU-Madison)	L	0-2
9/24	at Hunter	L	1-2
9/24	vs. Medgar Evers (at Hunter)	W	2-0
9/25	at St. Elizabeth*	W	3-1
10/1	at Kean*	W	3-1
10/2	at Ramapo*	L	2-3
10/4	MT. ST. VINCENT	W	2-0
10/4	JERSEY CITY STATE	W	2-0
10/4	BARUCH	L	1-2
10/4	RAMAPO*	W	2-0
10/4	UPSALA*	L	1-2
10/7	SUNY OLD WESTBURY	W	3-0
10/9	at Jersey City State	W	2-0
10/9	vs. William Paterson		
	(at Jersey City St.)	W	2-1
10/14	NY POLY	W	3-0
10/16	at NY Maritime	W	2-0

10/16	vs. Western Connecticut (at NY Maritime)	W 2-1
10/18	at Stockton	L 3-0
10/21	at Centenary*	W 3-0
10/22	RUTGERS-NEWARK	L 1-2
10/22	BLOOMFIELD	W 2-0
10/23	at FDU-Madison*	W 3-0
10/27	at Upsala*	W 3-0
10/29	at Caldwell	W 3-0
10/30	CO. COLLEGE OF MORRIS	W 3-0
11/5	at Stevens Tech	W 3-0
11/12	vs. Ramapo* (at St. Elizabeth)	W 2-1
11/12	vs. Upsala* (at St. Elizabeth)	W 2-1

**WIAC Conference matches
WIAC Record (7-1); 1st place
IAC Record (4-0); 1st place
Coach: Dave DeNure*

1987 (22-8)

9/19	Suburban Tournament	
	vs. Marywood	L 0-2
	vs. St. Elizabeth	W 2-0
	vs. FDU-Madison	W 2-0
	vs. Albright	W 2-0
	vs. Marywood	W 2-0
9.22	at Pratt**	W 3-0
9/23	HUNTER	L 0-2
9/23	STATEN ISLAND	W 2-0
9/24	ST. ELIZABETH*	W 3-0



Katherine Gerton

10/1	RAMAPO*	W 3-0
10/3	NJ TECH TOURNAMENT	
10/3	RAMAPO	W 2-0
10/3	JOHN JAY	W 2-0
10/3	JERSEY CITY STATE	W 2-0
10/3	BARUCH	L 0-2
10/3	HUNTER	L 0-2
10/8	JERSEY CITY STATE	W 2-1
10/8	WILLIAM PATERSON	W 2-1
10/13	at NYU Poly**	W 3-0
10/14	at Maritime**	L 1-2
10/14	at Western Connecticut**	W 2-0
10/17	STOCKTON STATE	W 3-0
10/20	KEAN	W 3-1
10/21	at Rutgers-Newark	L 1-2
10/21	at Bloomfield	W 2-0
10/22	FDU-MADISON*	W 3-0
10/26	UPSALA*	L 1-3
10/28	CALDWELL	W 3-0
10/29	at Co. College of Morris	W 3-0
11/4	STEVENS*	W 3-0
11/14	vs. NYU (ECAC)	L 0-3

**WIAC Matches
**IAC Matches
Coach: Dave DeNure*

1988 (26-6)

9/17	at Staten Island	W 2-0
9/17	vs. St. Elizabeth (at Staten Island)	W 2-0
9/17	vs. Albright (at Staten Island)	W 2-0
9/17	vs. Marywood (at Staten Island)	W 2-0
9/17	vs. Stockton (at Staten Island)	W 2-1
9/21	at Hunter	W 2-0
9/21	vs. Staten Island (at Hunter)	W 2-0
9/22	RUTGERS-NEWARK	L 2-3
9/29	RAMAPO	W 3-2
10/1	NJIT Tournament	
10/1	JERSEY CITY STATE	W 2-0
10/1	RUTGERS-NEWARK	W 2-1
10/1	FDU-MADISON	W 2-0
10/1	RAMAPO	W 2-0
10/5	ST. ELIZABETH	W 3-2
10/6	JERSEY CITY STATE	W 2-0
10/6	WILLIAM PATERSON	L 0-2
10/8	STEVEN TECH	W 2-0
10/8	STOCKTON STATE	W 2-0
10/8	SAINT PETER'S	L 0-2
10/8	RUTGERS-NEWARK	L 0-2
10/11	POLYTECHNIC	W 3-0
10/12	at Stevens	W 3-0
10/15	at Stockton	W 3-0

10/18	at Kean	W 3-0
10/20	at FDU-Madison	W 3-0
10/27	at John Jay	W 3-0
10/29	NY MARITIME	W 2-0
10/29	WESTERN CONNECTICUT	W 2-0
11/1	NYU	L 1-3
11/2	vs. NYU (at ECAC)	L 0-3

Coach: Dave DeNure

1989 (15-17)

9/13	MT ST. VINCENT#	W 3-0
9/14	at Montclair	W 3-0
9/16	Stockton State Tournament	
9/16	vs. Montclair State (at Stockton)	W 2-1
9/16	vs. Stevens (at Stockton)	W 2-1
9/16	at Stockton State	L 1-2
9/20	HUNTER	L 2-3
9/21	at Rutgers-Newark	L 0-3
9/27	at Centenary*	W 3-1
9/28	RAMAPO*	W 3-1
9/30	ST. ELIZABETH*	W 2-0
9/30	BARUCH	W 2-0
9/30	RUTGERS-NEWARK	L 0-2
9/30	HUNTER	L 0-2
10/4	ST. ELIZABETH*	W 3-0
10/5	Jersey City State (at William Paterson)	
10/5	at William Paterson	L 1-2
10/5	vs. Jersey City State	W 2-0
10/7	Rutgers-Newark Tournament	
10/7	vs. Ramapo	L 0-2
10/7	vs. Kean	L 0-2
10/7	vs. Stockton State	W 2-0
10/10	at New York Polytechnic#	W 3-0
10/11	STEVENS#*	W 3-0
10/18	KEAN	L 2-3
10/23	UPSALA*	L 1-3
10/25	vs. New York Maritime*	L 2-3
10/25	at Western Connecticut#	L 0-3
10/26	JOHN JAY	W 3-0
10/28	Albany Tournament	
10/28	at SUNY Albany	L 0-2
10/28	vs. Keuka	L 0-2
10/28	vs. Rutgers-Newark	L 0-2
10/28	vs. Vassar	L 0-2
10/31	at Baruch	W 3-0
11/1	at New York University	L 1-3

*# IAC matches
* WIAC matches
Coach: Dave DeNure*

Year-by-Year

1990 (23-12)

9/15	Delaware Valley	W	2-0
9/15	Goucher	W	2-0
9/15	Montclair State	W	2-0
9/15	Norte Dame	W	2-0
9/15	Stockton State	L	0-2
9/19	NYU	L	2-3
9/20	Rutgers-Newark	W	3-0
9/27	Centenary	W	3-0
9/30	Centenary	W	2-0
9/30	Caldwell	W	2-0
9/30	FDU	W	2-0
9/30	Upsala	W	2-0
10/3	St. Elizabeth	W	3-0
10/4	William Paterson	L	1-3
10/6	Upsala	W	2-0
10/6	Ramapo	W	2-1
10/6	Stockton State	W	2-0
10/6	Kean	L	1-2
10/10	Mt. St. Mary	W	3-1
10/11	Stevens	W	3-0
10/11	Kean	L	1-3
10/16	Upsala	W	3-1
10/18	FDU-Madison	W	3-0
10/20	NY Maritime	W	3-1
10/20	Western Connecticut	L	1-2
10/22	Hunter	L	0-3
10/24	Mt. St. Vincent	W	3-0
10/27	Stevens	W	2-0
10/27	Upsala	L	1-2
10/27	FDU-Madison	L	0-2
10/31	Montclair State	W	3-1
11/3	Polytechnic	W	3-0
11/8	Ramapo	W	2-1
11/8	Upsala	L	1-2

Coach: Dave DeNure

1991 (10-16)

9/14	Stockton State Tournament		
9/14	vs. Goucher	L	0-2
9/14	vs. Staten Island	W	2-1
9/14	at Stockton State	L	0-2
9/18	at Rutgers-Newark	L	0-3
9/19	HUNTER	L	0-3
9/24	PRATT	W	3-1
9/25	at Mt. St. Mary	L	1-3
9/29	Jersey "9" Tournament		
9/29	vs. Bloomfield	W	2-0
9/29	vs. FDU-Madison	L	0-2
9/29	vs. Upsala	L	0-2
10/2	at Bard*	L	0-3
10/3	RAMAPO#	W	3-0

10/9	ST. ELIZABETH#	W	3-0
10/10	KEAN	L	0-3
10/12	at Centenary#	W	3-2
10/16	at Stevens*#	L	1-3
10/22	UPSALA#	L	0-3
10/23	MT. ST. VINCENT*	W	3-1
10/24	at FDU-Madison#	L	0-3
10/26	at Polytechnic*	W	3-0
10/29	WILLIAM PATERSON	L	0-3
10/30	at Montclair State	L	0-3
11/3	WIAC Tournament (at Stevens)		
11/3	vs. Centenary&	W	2-0
11/3	vs. Ramapo&	W	2-1
11/3	vs. FDU-Madison&	L	1-2
11/3	vs. Upsala	L	0-3

*Independent Athletic Conference
#WIAC matches
&WIAC Tournament
Coach: Dave DeNure

1992 (8-12)

9/9	Stockton Tournament	5th place	
	vs. Staten Island	L	1-2
	at Stockton	L	0-2
	vs. Montclair State	W	2-1
9/14	MONTCLAIR STATE	W	3-2
9/17	at Hunter	L	1-3
9/23	MT. ST. MARY*		
9/24	RUTGERS-NEWARK	L	1-3
9/27	Jersey "9" Tournament	4th place	
	vs. Upsala	L	0-2
	vs. FDU-Madison	L	0-2
	vs. Centenary	W	2-0
	vs. Stevens Tech	W	2-1
9/30	BARD#	cancelled	
10/1	at Ramapo	W	3-2
10/7	at St. Elizabeth	L	2-3
10/8	at Kean	L	0-3
10/10	CENTENARY*		
10/13	at Mt. St. Vincent#	W	3-0
10/14	STEVENS TECH#	L	1-3
10/16	at Jersey City State	L	0-3
10/17	CENTENARY	postponed	
10/20	at Upsala*	L	0-3
10/21	MT. ST. MARY	cancelled	
10/22	FDU-MADISON	W	3-0
10/24	POLYTECHNIC#	W	3-0
10/25	WIAC Tournament	2nd place	
10/29	CENTENARY	L	0-3
10/31	vs. Vassar (at Marist)		
10/31	at Marist		

Coach: Kerry Keith



Nina Vukotic

1993 (7-20)

9/11	Stockton State Tournament		
9/11	at Stockton State	L	0-2
9/11	vs. Goucher (at Stockton)	L	0-2
9/11	vs. Montclair State (at Stockton)	L	0-2
9/11	vs. Ramapo (at Stockton)	L	0-2
9/13	at William Paterson	L	0-3
9/15	HUNTER	L	0-3
9/22	MT. ST. MARY**	L	0-3
9/23	at Rutgers-Newark	L	0-3
9/26	Jersey "9" Volleyball Tournament		
9/26	vs. Centenary (NJ)	W	2-0
9/26	vs. Bloomfield	L	0-2
9/26	vs. FDU-Madison	W	2-1
9/26	vs. Stevens	L	0-2
9/28	vs. FDU-Madison**	L	0-3
10/1	RAMAPO**	L	0-3
10/2	at Bard*	L	1-3
10/6	ST. ELIZABETH	W	3-0
10/7	KEAN	L	0-3
10/12	MT. ST. VINCENT	L	1-3
10/13	at Stevens*/**	L	0-3
10/15	JERSEY CITY STATE	L	0-3
10/21	at Montclair State	L	0-3
10/22	at Centenary **	W	3-0
10/24	WIAC Tournament	3rd place	
10/24	vs. Mt. St. Mary	W	2-0

10/24	vs. Ramapo	W 2-1
10/24	vs. Stevens	L 0-2
10/24	vs. FDU-Madison	L 1-2

* IAC matches

** WIAC matches

Coach: Bob Ford

1996

No team

1997

No team

2000 (0-16)

9/13	at Bloomfield	L 0-3
9/19	DOMINICAN	L 0-3
9/20	TEIKYO POST	L 0-3
9/23	at USP	L 0-3
9/23	vs. Nyack	L 2-3
9/29	at Dominican	L 0-3
10/4	at Teikyo Post	L 0-3
10/6	ST. ELIZABETH	L 1-3
10/7	at Wilmington (DE)	L 0-3
10/7	vs. Nyack	L 0-3
10/11	at Staten Island	L 0-3
10/14	USP	L 0-3
10/14	BLOOMFIELD	L 0-3
10/15	at Goldey-Beacom	L 0-3
10/22	WILMINGTON (DE)	L 0-3
10/27	GOLDEY-BEACOM	L 0-3

2001 (0-20)

9/18	DOMINICAN (NY)*	L 0-3
9/20	at Concordia (NY)	L 0-3
9/22	vs. Nyack*	L 0-3
9/22	at USP*	L 0-3
9/23	at Teikyo Post*	L 0-3
9/27	at Nyack*	L 0-3
9/29	at Goldey-Beacom*	L 0-3
10/4	at Dominican (NY)*	L 0-3
10/5	vs. Rowan!	L 0-3
10/5	vs. Springfield!	L 0-3
10/6	vs. Rutgers-Camden!	L 0-3
10/6	TEIKYO POST*	L 0-3
10/6	WILMINGTON (DE)*	L 0-3
10/11	GOLDEY-BEACOM*	L 0-3
10/13	at East Stroudsburg	L 0-3
10/14	at Wilimington (DE)*	L 0-3
10/21	USP*	L 0-3
10/21	BLOOMFIELD*	L 0-3
10/23	at Bloomfield*	L 0-3
10/25	RUTGERS-NEWARK	L 0-3

! Golden Dome Invitational at Rutgers-Newark

*CACC Matches (0-14)

Coach: Anthony Valbrun

2002 (0-18)

9/10	GEORGIAN COURT*	L 0-3
9/14	at Bloomfield*	L 0-3
9/14	vs. USP*	L 0-3
9/17	at Dominican (NY)*	L 0-3
9/21	USP*	L 0-3
9/21	NYACK*	L 0-3
9/24	TEIKYO POST*	L 0-3
9/26	at Nyack*	L 0-3
9/28	at Goldey-Beacom*	L 0-3
10/3	DOMINICAN (NY)*	L 0-3
10/5	at Teikyo Post*	L 0-3
10/5	vs. Wilmington (DE)*	L 0-3
10/10	GOLDEY-BEACOM*	L 0-3
10/12	WILMINGTON (DE)*	L 0-3
10/17	at Georgian Court*	L 0-3
10/19	vs. Merrimack	L 0-3
10/19	at Adelphi	L 0-3
10/22	BLOOMFIELD*	L 0-3

*CACC Matches (0-16)

Coach: Anthony Valbrun

2003 (0-21)

9/9	at Georgian Court*	L 0-3
9/11	BRIDGEPORT	L 0-3
9/13	vs. USP *	L 0-3
9/13	at Bloomfield*	L 0-3
9/16	DOMINICAN (NY)*	L 0-3
9/20	at Nyack*	L 0-3
9/23	at Teikyo Post*	L 0-3
9/25	NYACK*	L 0-3
9/27	at Goldey-Beacom*	L 0-3
9/27	vs. Holy Family*	L 0-3
10/1	at Dominican (NY)*	L 0-3
10/4	WILMINGTON (DE)*	L 0-3
10/4	TEIKYO POST*	L 0-3
10/9	GOLDEY-BEACOM*	L 0-3
10/11	at Wilmington (DE)*	L 0-3
10/14	at Holy Family*	L 0-3
10/16	GEORGIAN COURT*	L 0-3
10/21	BLOOMFIELD*	L 0-3
10/27	MOLLOY	L 0-3
10/29	SAINT ROSE	L 0-3

*CACC Matches (0-18)

Coach: Pavlina Klimova

2004 (13-13)

9/8	at Queens (NY)	L 0-3
9/11	at USP*	L 0-3
9/16	at Felician*	W 3-0
9/18	NYACK*	W 3-1
9/18	USP*	W 3-1

9/21	TEIKYO POST*	L 1-3
9/23	at Nyack*	W 3-0
9/25	GOLDEY-BEACOM*	W 3-0
9/28	FELICIAN*	W 3-0
9/30	DOMINICAN (NY)*	W 3-2
10/2	at Teikyo Post*	L 0-3
10/2	vs. Wilmington (DE)*	L 0-3
10/9	WILMINGTON (DE)*	L 0-3
10/12	at Holy Family*	W 3-1
10/14	at Georgian Court*	W 3-1
10/16	at Molloy	L 2-3
10/19	at Bloomfield*	W 3-2
10/23	at Goldey-Beacom*	L 0-3
10/23	vs. Delaware State	L 0-3
11/1	at Concordia (NY)	L 0-3
11/4	at Dominican (NY)*	L 0-3
11/6	GEORGIAN COURT*	W 3-1
11/9	at USP^	W 3-1
11/12	vs. Wilmington (DE)*	L 0-3

*CACC Matches (12-18)

^CACC Tournament

Coach: Pavlina Klimova

2005 (8-20)

8/27	vs. Daemen (at Shippensburg)	L 1-3
8/27	vs. Slippery Rock (at Shippensburg)	L 0-3
8/28	vs. Clarion (at Shippensburg)	L 0-3
8/28	at Shippensburg	L 0-3



Ariel Scott

Year-by-Year

9/6	CW POST	L	1-3
9/10	at Philadelphia	L	1-3
9/10	vs. Felician (at Philadelphia)	W	3-0
9/17	at USP	L	1-3
9/17	vs. Dominican (NY) (at USP)	L	2-3
9/21	HOLY FAMILY	L	2-3
9/24	vs. Holy Family (at Dominican NY)	W	3-0
9/24	at Dominican (NY)	L	2-3
9/27	PHILADELPHIA	L	2-3
9/29	at Bloomfield	L	1-3
10/1	vs. Bloomfield (at Wilmington DE)	W	3-0
10/4	at Post	L	1-3
10/7	at Georgian Court	L	1-3
10/12	WILMINGTON (DE)		
10/15	GOLDEY-BEACOM	W	3-1
10/18	NYACK	W	3-0
10/22	vs. Goldey-Beacom (at Post, CT)	L	1-3
10/22	at Post (CT)	L	1-3
10/26	CONCORDIA (NY)	L	0-3
10/28	QUEENS (NY)	L	2-3
11/2	at USP	L	0-3
11/5	NYACK	W	3-0
11/5	FELICIAN	W	3-0

Coach: Ryan McNeil

2006 (10-21)

8/25	vs. St. Peter's (at Army)	L	1-3
8/26	at Army	L	0-3
9/1	vs. Manhattan (at Howard)	W	3-0
9/2	vs. American (at Howard)	L	0-3
9/2	at Howard	W	3-0
9/6	at LIU	L	0-3
9/8	at Columbia	L	0-3
9/9	vs. Hofstra (at Columbia)	L	0-3
9/9	vs. Hartford (at Columbia)	L	1-3
9/15	at Fordham	L	0-3
9/15	vs. St. Peter's (at Fordham)	W	3-0
9/16	vs. Maine (at Fordham)	L	0-3
9/16	vs. Tulsa (at Fordham)	L	0-3
9/21	SAN FRANCISCO	L	0-3
9/29	vs. Robert Morris (at Dartmouth)	L	0-3
9/30	at Dartmouth	L	0-3
9/30	vs. Harvard (at Dartmouth)	L	0-3
10/3	QUINNIPIAC	W	3-0
10/4	at Lafayette	L	1-3
10/7	at Fairleigh Dickinson	L	1-3
10/7	vs. Wagner (at Fairleigh Dickinson)	W	3-0
10/11	ARMY	L	0-3
10/20	vs. Winston-Salem St. (at Delaware State)	W	3-0
10/21	at Delaware State	L	1-3



10/21	vs. Providence (at Delaware State)	L	1-3
10/25	WAGNER	W	3-0
10/27	at Central Conn. State	L	0-3
11/1	ST. FRANCIS (NY)	W	3-0
11/4	MARYLAND-EASTERN SHORE	L	2-3
11/8	MANHATTAN	W	3-0
11/12	at Sacred Heart	W	3-0

First Division I season

Coach: Ryan McNeil

2007 (13-24)

8/25	at Central Conn. State	L	1-3
8/25	vs. Saint Peter's (at Central Conn. State)	L	1-3
8/28	at Army	L	1-3
8/31	at St. John's	L	0-3
9/1	vs. Virginia Tech (at St. John's)	L	0-3
9/1	vs. Fairfield (at St. John's)	L	0-3
9/5	at Seton Hall	L	2-3
9/7	at Navy	L	1-3
9/8	vs. Central Conn. State (at Navy)	L	2-3
9/8	vs. Marist (at Navy)	W	3-2
9/11	LAFAYETTE	L	2-3
9/14	at Tulsa	L	0-3
9/15	vs. Grambling State (at Tulsa)	W	3-0
9/15	vs. North Texas (at Tulsa)	L	0-3
9/18	Morgan State	W	3-0
9/21	vs. Hartford (at Harvard)	W	3-1
9/22	vs. Dartmouth (at Harvard)	L	0-3

9/22	at Harvard	L	1-3
9/26	FAIRLEIGH DICKINSON	W	3-0
9/28	ST. FRANCIS (NY)	W	3-0
9/28	UTAH VALLEY	L	1-3
9/29	QUINNIPIAC	W	3-0
9/29	COLUMBIA	L	2-3
10/10	at UMBC	L	1-3
10/12	WAGNER	W	3-1
10/14	SAINT FRANCIS (PA)	L	1-3
10/17	at Morgan State	L	0-3
10/26	PROVIDENCE	W	3-2
10/27	HOWARD	W	3-2
10/27	SACRED HEART	W	3-2
10/31	at American	L	0-3
11/2	at Wagner	W	3-0
11/7	at Fairleigh Dickinson	L	0-3
11/10	DELAWARE STATE	W	3-2
11/16	vs. Chicago State (at Orem, UT)	L	1-3
11/16	vs. Cal State Bakersfield (at Orem, UT)	L	0-3
11/17	vs. Providence (at Orem, UT)	L	0-3

Coach: Ryan McNeil

2008 (18-16)

8/29	vs. Oral Roberts (at UTEP)	L	0-3
8/30	at Univ. of Texas-El Paso	L	0-3
8/30	vs. Butler (at UTEP)	L	0-3
9/5	at St. Francis (NY)	W	3-0
9/9	WAGNER	W	3-0
9/12	UMBC	L	0-3
9/13	LOYOLA (MD)	L	2-3
9/13	SACRED HEART	L	0-3
9/17	SETON HALL	W	3-1
9/19	vs. Columbia (at Saint Francis, PA)	L	2-3
9/20	at Saint Francis (PA)	W	3-0
9/20	vs. Akron (at Saint Francis, PA)	W	3-2
9/24	at Fairleigh Dickinson	W	3-0
9/27	at Quinnipiac	W	3-0
9/27	vs. Hartford (at Quinnipiac)	W	3-0
9/28	vs. Coppin State (at Quinnipiac)	W	3-0
9/30	at La Salle	W	3-0
10/7	LEHIGH	W	3-1
10/8	ARMY	L	0-3
10/11	at American	L	2-3
10/14	at Lafayette	W	3-2
10/17	at Sacred Heart	L	0-3
10/22	at Columbia	L	1-3
10/28	ST. FRANCIS (NY)	W	3-0
10/31	PROVIDENCE	W	3-0
11/1	BRYANT	W	3-0

11/1	HOWARD	W	3-1
11/5	at Wagner	W	3-0
11/8	at Delaware State	L	2-3
11/12	FAIRLEIGH DICKINSON	L	2-3
11/21	vs. Providence (at Utah Valley)	W	3-0
11/21	vs. Cal State Bakersfield (at Utah Valley)	L	0-3
11/22	at Utah Valley	L	1-3
11/22	vs. Texas-Pan American (at Utah Valley)	L	2-3

Coach: Ryan McNeil

2009 (17-11)

8/28	at St. Francis (NY)	W	3-0
8/29	vs. Bucknell (at St. Francis, NY)	W	3-0
8/29	vs. Saint Peter's (at St. Francis, NY)	W	3-0
9/2	FAIRLEIGH DICKINSON	W	3-1
9/4	vs. Hartford (at CCSU)	W	3-0
9/5	at Central Conn. State	W	3-0
9/5	vs. Manhattan (at CCSU)	W	3-0
9/9	SACRED HEART	W	3-0
9/11	vs. Virginia Tech (at American)	L	0-3
9/12	at American	L	1-3
9/15	COLUMBIA	W	3-0
9/18	at Seton Hall	L	0-3
9/19	vs. Yale (at Seton Hall)	L	0-3
9/19	vs. Hofstra (at Seton Hall)	L	1-3



Danica Vukotic

9/25	vs. Texas-Pan American (at HBU)*	W	3-0
9/26	at Houston Baptist*	W	3-1
10/3	CHICAGO STATE*	W	3-0
10/10	UTAH VALLEY*	W	3-2
10/14	at Lafayette	W	3-0
10/23	at North Dakota*	L	0-3
10/25	at South Dakota*	L	2-3
10/29	HOUSTON BAPTIST*	W	3-0
10/31	TEXAS-PAN AMERICAN*	L	1-3
11/5	SOUTH DAKOTA*	W	3-1
11/7	NORTH DAKOTA*	L	0-3
11/12	at Utah Valley*	L	1-3
11/14	CHICAGO STATE*	W	3-0
11/20	HOUSTON BAPTIST#	L	2-3

**Great West Conference matches*

#Great West Conference Tournament

Great West (7-5)

Coach: JR Martins

2010 (4-22)

8/27	at St. Francis (NY)	L	1-3
8/28	vs. Saint Peter's (at St. Francis, NY)	W	3-1
9/1	at Fairleigh Dickinson	L	1-3
9/4	at Marist	L	0-3
9/4	vs. Holy Cross (at Marist)	L	2-3
9/7	RUTGERS	L	0-3
9/10	vs. Yale (at Long Island)	L	0-3
9/11	at Long Island	L	0-3
9/11	vs. Georgetown (at Long Island)	L	1-3
9/16	at Utah Valley*	L	0-3
9/18	at Chicago State*	W	3-2
9/23	TEXAS-PAN AMERICAN*	L	0-3
9/25	HOUSTON BAPTIST*	L	0-3
10/2	CHICAGO STATE*	W	3-0
10/5	at Lafayette	W	3-1
10/7	SETON HALL	L	2-3
10/12	at Hofstra	L	0-3
10/14	at Sacred Heart	L	0-3
10/21	NORTH DAKOTA*	L	0-3
10/23	SOUTH DAKOTA*	L	2-3
10/28	at Houston Baptist*	L	0-3
10/30	at Texas-Pan American*	L	0-3
11/4	at South Dakota*	L	1-3
11/6	at North Dakota*	L	0-3
11/11	UTAH VALLEY*	L	0-3
11/19	vs. South Dakota (at Chicago State) #	L	1-3

**Great West Conference matches*

#Great West Conference Tournament

Great West (2-10)

Coach: JR Martins

2011(11-18)

8/26	at St. Francis (NY)	W	3-0
8/27	vs. Fordham (at St. Francis)	cancelled	
8/27	vs. Rider (at St. Francis)	cancelled	
8/31	at Rutgers	L	1-3
9/2	vs. Princeton (at Hofstra)	L	1-3
9/3	vs. Fairfield (at Hofstra)	L	1-3
9/6	LEHIGH	W	3-2
9/9	at Army	L	1-3
9/9	vs. Marist (at Army)	L	0-3
9/11	vs. Arkansas (at Army)	L	0-3
9/11	vs. Dartmouth (at Army)	W	3-2
9/14	FAIRLEIGH DICKINSON	L	2-3
9/16	at Seton Hall	L	0-3
9/16	vs. TCU (at Seton Hall)	L	0-3
9/17	vs. Boston College (Seton Hall)	L	0-3
9/20	LA SALLE	W	3-0
9/22	HOFSTRA	W	3-2
9/29	HOUSTON BAPTIST*	L	1-3
10/1	TEXAS-PAN AMERICAN*	W	3-0
10/6	at North Dakota*	L	0-3
10/8	at Utah Valley*	L	0-3
10/15	at Chicago State*	W	3-2
10/20	UTAH VALLEY*	L	2-3
10/22	NORTH DAKOTA*	L	1-3
10/25	LAFAYETTE	W	3-0
10/27	at Saint Peter's	W	3-0
11/3	at Texas-Pan American*	W	3-2
11/5	at Houston Baptist*	L	0-3
11/12	CHICAGO STATE	L	2-3
11/17	vs. #5 Chicago State (at UND)#	W	3-1
11/18	vs. #1 Utah Valley (at UND)#	L	0-3

**Great West Conference matches*

#Great West Conference Tournament

Great West (3-7)

Coach: JR Martins

2012 (12-16)

8/24	vs. Maryland Eastern Shore (at St. Francis)	L	1-3
8/24	vs. Radford (at St. Francis)	L	1-3
8/25	at St. Francis Brooklyn	W	3-2
8/29	at Iona	L	1-3
9/1	MARIST	W	3-1
9/1	vs. Fordham (at Marist)	L	2-3
9/2	vs. Hartford (at Marist)	L	1-3
9/7	vs. Stony Brook (at Fordham)	W	3-2
9/8	vs. Cornell (at Fordham)	W	3-2
9/8	at Fordham	W	3-1
9/12	at Temple	L	0-3
9/14	at LIU	L	1-3
9/15	vs. Maryland (at LIU)	L	0-3

Year-by-Year



Grace Gao

9/15	vs. St. John's (at LIU)	L 0-3
9/19	at Fairleigh Dickinson	W 3-1
9/27	HOUSTON BAPTIST*	L 1-3
9/29	TEXAS-PAN AMERICAN*	L 1-3
10/2	SAINT PETER'S	W 3-0
10/6	at Chicago State*	W 3-0
10/13	at Utah Valley*	L 2-3
10/16	at La Salle	L 2-3
10/23	at Lafayette	W 3-2
10/27	CHICAGO STATE*	W 3-0
11/4	at Houston Baptist*	L 0-3
11/5	at Texas-Pan American*	W 3-2
11/8	UTAH VALLEY*	L 1-3
11/16	Chicago State (at Utah Valley) #	W 3-0
11/16	Houston Baptist (at Utah Valley) #	L 1-3

*Great West Conference matches

#Great West Conference Tournament

Great West (3-5)

Coach: JR Martins

2013 (7-15)

9/4	SAINT PETER'S	W 3-0
9/6	at St. Francis Brooklyn	L 0-3
9/7	vs. Howard (at St. Francis Brooklyn)	L 0-3
9/7	vs. Rider (at St. Francis Brooklyn)	L 0-3
9/11	TEMPLE	L 2-3
9/13	at UMBC	L 0-3

9/14	vs. Loyola (at UMBC)	W 3-1
9/14	vs. Howard (at UMBC)	L 1-3
9/18	at Fairleigh Dickinson	L 2-3
9/20	vs. Fordham (at CCSU)	L 0-3
9/21	at Central Conn. State	L 1-3
9/21	vs. Hartford (at CCSU)	L 1-3
9/25	at La Salle	W 3-0
10/2	ST. FRANCIS BROOKLYN	W 3-0
10/4	LAFAYETTE	W 3-2
10/9	at Saint Peter's	W 3-0
10/16	at Manhattan	W 3-2
10/19	at Lehigh	L 0-3
10/30	SETON HALL	L 1-3
11/3	FAIRLEIGH DICKINSON	L 1-3
11/8	at Coppin State	L 1-3
11/14	IONA	L 0-3

Coach: JR Martins

2014 (13-22)

2014 La Salle Invitational		
8/29	vs. Coppin State	L 0-3
	at La Salle	W 3-1
8/30	vs. Manhattan	L 0-3
	vs. Loyola (MD)	W 3-1
9/3	SAINT PETER'S	W 3-0
St. Francis Brooklyn Terrier Invitational		
9/5	at St. Francis Brooklyn	L 0-3
9/6	vs. Manhattan	L 1-3
	vs. Hofstra	L 0-3
Rhode Island Tournament		
9/12	at Rhode Island	L 0-3
	vs. Rutgers	L 0-3
9/13	vs. Cincinnati	L 0-3
9/17	at Fairleigh Dickinson	W 3-1
CCSU Blue Devil Invitational		
9/19	vs. Providence	L 2-3
9/20	vs. Hartford	L 1-3
	at CCSU	L 0-3
9/27	at UMass Lowell	L 1-3
9/28	at New Hampshire	L 0-3
10/1	at Lafayette	W 3-0
10/3	at Delaware State	W 3-0
10/8	at Saint Peter's	L 1-3
10/11	ROBERT MORRIS	L 2-3
10/15	at Army	L 0-3
10/18	LEHIGH	L 0-3
10/21	IONA	W 3-2
10/24	DELAWARE STATE	W 3-0
10/29	at Rider	L 0-3
10/31	HAMPTON	L 0-3

11/5	FAIRLEIGH DICKINSON	W 3-1
11/7	COPPIN STATE (Senior Night)	W 3-1
11/14	HOWARD	W 3-0
11/15	at Bucknell	L 0-3
Grand Canyon Tournament		
11/21	vs. Nebraska at Omaha	L 1-3
	vs. Incarnate Word	W 3-1
11/22	vs. UMass Lowell	W 3-0
	at Grand Canyon	L 2-3

Coach: Peter Volkert



Shani Leacock

All-Time Varsity Roster

(First Season: 1982; complete thru 2014)

A

APPLEBY, Emma 00,01,02,03
ALBERTI, Ashley 11
ALBYN, Tess 14
ALMAGRO, Sandy 99
ALVARADO, Karla 91,92,93,94
ALVAREZ, Mildred 92
ARMADA, Alyssa 14
ARAUJO, Juliana 08, 09, 10, 11

B

BABY, Sabrina 06, 07, 08, 09
BAEZ, Aliza 91
BARTLETT, Katie 10
BEGASSE, Eileen 83,84,85,88
BERNAL, Marelis 03
BERROA, Beverly 99,00,02
BROWN, Jessica 87
BUTENSKY, Carisa 00,01
BORILLO, Anna 98
BOYADJIS, Theodora 04

C

CACERAS, Sandra 92,93,95
CAMEROTA, Laura 93
CARROLL, Valerie 10, 11, 12, 14
CASADO, Angie 04
CHANNER, Rene 95
CHIRINOS, Gladys 98
CHOI, R. 82
CHOY, Yvonne 94,95
COLOMBO, Julia 10, 11, 12, 13
CONTALDI, Natalie 85,86
CORSARO, Denise 85,86,88,89
CRAIG, Ashley 04, 05, 07
CRUZ, Iris 91

D

DAWSON, Marilyn 83,84,85,86
DECANDIA, Nicole 01
DELGADO, Paola 93

E

EDMONSON, Fran 12, 13, 14
ENG, Cathy 89,90,91,92

F

FERNANDEZ, Alana 99,00
FORTIER, Linda 85,86,87,88
FRANKLIN, Sylvia 88,90
FUKAZAWA, Ursula 87,88,89,90

G

GAO, Grace 13, 14
GARBARINO, Mandy 14
GERTON, Katherine 13, 14
GILL, Victoria 07
GOLDRICK, Elizabeth 85,86,87,88
GOMEZ, Monica 98
GONZALEZ, Claudia 83,84
GONZALEZ, Yanet 87,88,89,90
GOSWICK, Katie 11, 12, 13, 14
GRADDY, E. 82,83
GRUENEWALD, Wendy 95
GYURICZA, Emese 06

H

HAECKEL, Kristy 06, 07, 08, 09
HAMILTON, Heather 98
HAROLD, Lynn 85
HARTUNG, Heidi 82,83,84
HICKS, R. 82,83
HOGERHYDE, Allison 05
HORNSTEIN, Katrina 06, 07, 08, 09
HUGHES, Baaba 07, 08, 09, 10

I

INGRAM, S. 82,83

J

JANSSEN, Kat 14
JIMENEZ, Lenny 93,94,95
JIMENEZ, Vanessa 95
JOSEPH, Nikiesha 98,99,00,01

K

KASEM, Fatima 06
KING, Donna 91,92,93
KING, S. 82
KREHER, Elizabeth 04, 05
KRZEMINSKI, Connie 89,90,91,92
KULKARNI, Sita 03

L

LAGAN, Tara 90
LARA, Eliana 00,01,02
LEACOCK, Shani 14
LEE, Diana 82,83,84
LEUNG, Cathy 10, 11, 12, 13
LEWIS, Katlyn 07
LIMA, Fernanda 09, 10, 11
LIU, Kathy 88,90,91,92
LOAYZA, Marcie 98,99,00
LOPEZ, Cindy 93,94,95
LORENZETTI, Lisa 92

M

MAHECHA, Luz 03
MARIN, Olga 87
MARQUES, Vanessa 14
MARTINEZ, Dolores 01,02,03,04
MASSEY, SchrKya 03
MAYS, Felicia 86,87,88,90
MCKENNA, A. 82
MCCABE, Kayleigh 13, 14
MCNAIR, Tamara 95
MENDOZA, Charisma 99
MENESES, Michelle 92
MERCADO, Anna 09, 10, 11, 12
METTLE, Jane 05
MIRANDA, Becky 82,83,84
MONTFERRET, Jennifer 01
MUCHA, M. 82
MULLEN, Veronica 99

N

NAGY, K. 82
NICOLAOU, Claire 85,86,87
NIETO, Diana 91,92,93,95

O

OCHS, Gina 86,87,88,90
O'CONNOR, Kelly 89,90,91
OPORSKA, Marta 01,03, 04, 05
OSEGUERA, Gladis 13

P

PACHECO, Patricia 87,88,90
PAGANO, Maria 85,86
PAG, Song Sun 84,85
PAPALEXIOU, Renuska 05
PANDOLFO, Renata 08, 09, 11, 12
PATEL, Sushreet 95
PERRU, Barbara 12
PICHARDO, Carmen 94,95
PINCAY, Maria 95
POLANSKYJ, Odarka 83,84,85
PONTON, Clara 93,94
PRATT, Joanie 87,88,89,90
PREGOWSKA, Agnieszka 05, 06, 07, 08
PRERADOVICH, Channele 08, 09
PROPSNER, J. 82,83

Q

QUINTANILLA, Jackie 05
QUINTERO, Veronica 03

R

RACHER, Sonia 86
RATYCZ, Nadia 84
RIOS, Tulia 88,89,90,92

RIVERA, Erica 98
RIVERA, H. 82
ROBINSON, Sharae 03
ROJAS, Natalie 03
ROJAS, S. 83
RONQUILLO, R. 82,83
RUSIN, Kasha 04, 05, 07
RYGELIS, Regina 82,85,86

S

SANTOS, Catherine 02
SAMMS, Chevanese 02
SANTANA, Dennise 03
SCHNEIDER, Cindy 84,85
SCHULTZ, Erica 07, 08, 09
SNEED, Brandy 01
SNELL, Audrey 08, 09, 10, 11
SNELL, Janet 09, 10, 11, 12

T

TABOR, Erika 13
TAI, Bonnie 92, 93, 94
TALOCCO, Michelle 93, 94, 95
TANRIKULU, Kubra 04, 06, 07
THOMPSON, Danielle 05, 06, 07, 08
TINARI, Camilla 11, 12, 13, 14
TOMCZAK, Anna 99
TRUCILLO, Gina 86,87,88,89

V

VARGAS, Sharon 01, 02
VonKOENIG, Gretchen 10, 11, 12, 13
VUKOTIC, Danica 12, 13, 14
VUKOTIC, Nina 12, 13, 14

W

WALDBURGER, Stacy 00,01,02
WASHINGTON, Lisa 86
WILKINSON, Rebecca 04, 06, 07
WINCHESTER, Melsha 98,99
WONG, Ileana 83,84
WRONA, Edyta 89,90,91,92
WYKA, Jacqueline 00,01

Z

ZACHER, Sonia 85,87,88
ZIEMER, Carly 10

2015 players in bold

Corrections welcome. Please contact
Stephanie Pillari at pillari@njit.edu

NJIT Hall of Fame

Name	Grad. Year	Contribution	Sport (s)	Years Active	Year of Induction	Name	Grad. Year	Contribution	Sport (s)	Years Active	Year of Induction
BAKUN, Andrew I.	1982	Athlete/Asst. Coach	M-Soccer	1978-81/ 90-91	2005	IRIS, Herb	1951	Benefactor	--	--	2007
BAKUN, Myron	1967	Athlete	M-Soccer	1964-66	1991	KAMINSKY, Nicholas J.	1978	Athlete	Baseball	1975-78	2006
BARTH, Roland E.	1960	Athlete	M-Fencing	1957-59	2009	KASBARIAN, Raymond P.	1966	Founder/Athlete	Judo	1962-66	1989
			M-Soccer	1956-59		KETZNER, Robert Shelby	--	Coach	Rifle	1962-86	1987
BAUDER, Fred "Coach"	--	Coach	M-Basketball	1932-61	1989	KHOWAYLO, Alex	1969	Athlete	M-Soccer	1960-63	1996
BLUM, Raymond E.	1950	Distinguished Alumnus	Speedskating/ Cycling	--	1996	LUBETKIN, Charles "Tudy"	1953	Athlete	M-Basketball/ M-Track	1949-52	1994
BORJA, Hernan "Chico"	1981	Athlete	M-Soccer	1977-80	1986	LYNCH, Robert K.	1984	Athlete/Coach	M-Fencing	1977-80/ 86-91	1993
BORNAKO, Gregory "Egor"	1970	Athlete	M-Fencing	1966-70	1987	MacDONALD, Dan	1984	Athlete	Baseball	1981-84	1992
BOWSER, Hamilton V.	1952	Athlete	M-Fencing	1948-52	1989	OLSEN, Richard J.	1969	Athlete	M-Basketball	1965-69	1988
BRADLEY, Thomas	1978	Athlete	M-Swimming	1974-78	1990	OLSON, George R.	1977	Athlete	Baseball	1974-77	1987
BROWN, Andrew D.	1963	Athlete	M-Soccer	1956-59	2006	PAULIUS, Raymond V.	1985	Athlete	M-Soccer	1980-83	2006
CRIMMINS, David	1952	Athlete	M-Fencing	1948-52	2007	RODGERS, Tarik	1996	Athlete	M-Volleyball	1992-95	2010
CRUZ, Edward	1963	Athlete	M-Soccer	1959-62	1995	ROGERS, Warren	1988	Athlete	M-Basketball	1983-87	1993
DAWSON, Marilyn E.	1986	Athlete	WVB/WBKB/SB	1982-86	1991	ROMULUS, Rudy	1991	Athlete	M-Volleyball	1988-91	1996
DeNICOLA, Carmine P.	1978	Athlete	Baseball	1975-78	2005	ROSS, Jonathan A.	1956	Athlete	M-Soccer	1953-55	2010
DeNURE, Dave	--	Coach	M-Volleyball	1982-98	2009	SARLO, Paul A.	1992	Athlete	Baseball	1989-91	2005
			W-Volleyball	1986-90		SCHMID, John "Gene"	--	Asst Coach/Coach	Baseball	1968-72/ 73-97	2002
			W-Basketball	1987-88		SIMON, J. Malcolm	--	Coach	M-Soccer	1955-83	1994
DeVITO, Louis	1960	Athlete	M-Soccer/ M-Fencing	1956-60	1992			Director of Athletics	--	1983-94	
DIAS, Joe A.	1977	Athlete	M-Soccer	1973-76	1993	SKURLA, Peter J.	1941	Athlete	Bowling	1937-41	1992
DRURY, Eugene M.	1963	Athlete	M-Tennis	1960-63	1988	SORIANO, Gregory	1975	Athlete	M-Fencing	1968-72	2010
ENG, Katherine	1993	Athlete	W-Volleyball	1989-92	2007	SWANSON, Robert F.	--	Director of Athletics	--	1947-82	1986
ETIENNE, Yves	1979	Athlete	M-Volleyball	1976-78	1990	TAETZSCH, Robert	1952	Athlete	M-Fencing	1948-52	2007
FEHN, Gilbert F.	1940	Athlete	M-Basketball/ M-Tennis	1936-40	1992	TAETZSCH, William	1952	Athlete	M-Fencing	1948-52	2007
			M-Basketball	1961-66/ 52-61	1986	TOSATO, Lawrence P.	1956	Athlete	M-Basketball/ Baseball	1952-56	1987
FITZGERALD, Joseph M.	--	Coach/Asst. Coach	M-Basketball	1947-51	1992	TUBELLO, Jeffrey	1976	Athlete	Rifle	1972-76	1988
FLEISHER, Seymour "Zoom"	1951	Athlete	M-Basketball	1981-85	1995	VAN WRIGHT, Nevea	1997	Athlete	W-Basketball	1991-96	2005
GAGLIARDO, Salvatore A.	1985	Athlete	M-Basketball	1981-85	1991	WALSH, John J.	1966	Athlete	MSoc/MBKB/ Baseball	1962-66	1986
GALLAGHER, Thomas G.	1985	Athlete	M-Basketball	1950-53	1993	WASNIIEWSKI, Frank	1980	Athlete	M-Tennis	1977-80	1990
GIOVANNOLI, Arnold L.	1953	Athlete	W-Volleyball/ Softball/WBKB/WTen	1985-90	1995	WELGOS, Bob	1962	Athlete	M-Basketball/ Bowling	1959-62	2005
GOLDRICK PITT, Elizabeth M.	1990	Athlete	Softball	1986-89	2009	WOROBEC, Myron S.	1966	Athlete	M-Soccer	1962-65	1994
GRAZIANO, Jean M.	1989	Athlete	WBKB/Softball/ W-Volleyball/W-Soccer	1992-96	2003	YONEZUKA, Yoshishada	--	Founder/Coach	Judo	1962-?	1991
GRUENEWALD, Wendy A.	1997	Athlete	M-Fencing	1971-75	1988	ZORN, Werner	1962	Athlete	M-Soccer	1958-61	1988
HAASE, Jay W.	1975	Athlete	M-Soccer	1974-77	2003						
HAMMOND, Kenneth W.	1979	Athlete	M-Soccer	1959-62	2002	Teams	Year	Accomplishments		Year of Induction	
HANDWERKER, Andy	1963	Athlete	--	1953-91	1990	Men's Soccer	1960	NAIA co-National Champion		1988	
HAUSSER, Paul C.	--	Administrator	Fencing/Baseball	1954-88/53-72		Men's Basketball	1981-82	NJIT's first ECAC and IAC champion		1990	
			M-Soccer	1968-71	1990	Baseball	1982	NJIT's second ECAC and IAC champion		1993	
HUBEY, Ali	1972	Athlete	M-Soccer	1970-74	1987						
HURTADO, Fabian	1975	Athlete									

Alyssa Armada

Directions

FOR GPS USERS

The address for Lubetkin Field at Mal Simon Stadium, the Estelle and Zoom Fleisher Athletic Center, and the Naimoli Family Athletic and Recreational Facility is 80 Lock Street, Newark, NJ, 07102.

BY CAR

New Jersey Turnpike: Driving North from South Jersey: Take NJ Turnpike to Exit 13A Newark Airport. After toll stay to left and follow signs to Rt. 1 & 9 North. You will merge onto Rt. 1 & 9 North. Airport will be on right. Follow signs for downtown Newark and Rt. 21 North-(left lane exit ramp). Downtown Newark will be in front of you. NYC will be off to your right. Follow Rt. 21 North (McCarter Highway). Turn left on Raymond Blvd. Follow Raymond Blvd. past Warren Street traffic light and Fleisher Athletic Center, Naimoli Center, and Lubetkin Field at Mal Simon Stadium will be to your right (one soccer goal line runs along Warren Street and the soccer sideline parallels Lock Street).

New Jersey Turnpike: Driving South from North Jersey: Take exit 15W to Route 280 West, then follow Route 280 West directions.

Route 280 West: After drawbridge, take Exit 15A (Rt. 21 South - McCarter Highway). Follow Rt. 21 South to Raymond Blvd. Turn right on Raymond Blvd. Follow Raymond Blvd. past Warren Street traffic light and Fleisher Athletic Center, Naimoli Center, and Lubetkin Field at Mal Simon Stadium will be to your right (one soccer goal line runs along Warren Street and the soccer sideline parallels Lock Street).

Route 280 East: Take Exit 15 (Rt. 21 South - McCarter Highway). Follow Rt. 21 South to Raymond Blvd. Turn right on Raymond Blvd. Follow Raymond Blvd. past Warren Street traffic light and Fleisher Athletic Center, Naimoli Center, and Lubetkin Field at Mal Simon Stadium will be to your right (one soccer goal line runs along Warren Street and the soccer sideline parallels Lock Street).

Garden State Parkway (North & South bound): Take exit 145 to Route 280 East, then follow Route 280 East directions.

Route 1 & 9 North & South: Take exit marked Newark, Rt. 21 North (McCarter Highway). Follow Rt. 21 North (McCarter Highway). Turn left on Raymond Blvd. Follow Raymond Blvd. past Warren Street traffic light and Fleisher Athletic Center, Naimoli Center, and Lubetkin Field at Mal Simon Stadium will be to your right (one soccer goal line runs along Warren Street and the soccer sideline parallels Lock Street).

Route 78 East: Take Route 78 East to Rt. 21 North. Turn left on Raymond Blvd. Follow Raymond Blvd. past Warren Street traffic light and Fleisher Athletic Center, Naimoli Center, and Lubetkin Field at Mal Simon Stadium will be to your right (one soccer goal line runs along Warren Street and the soccer sideline parallels Lock Street).



Route 22 East: Take Route 22 East to Route 21 North. Turn left on Raymond Blvd. Follow Raymond Blvd. past Warren Street traffic light and Fleisher Athletic Center, Naimoli Center, and Lubetkin Field at Mal Simon Stadium will be to your right (one soccer goal line runs along Warren Street and the soccer sideline parallels Lock Street).

Route 21 North: Follow Rt. 21 North to Raymond Blvd. Turn left onto Raymond Blvd. Follow Raymond Blvd. past Warren Street traffic light and Fleisher Athletic Center, Naimoli Center, and Lubetkin Field at Mal Simon Stadium will be to your right (one soccer goal line runs along Warren Street and the soccer sideline parallels Lock Street).

Route 21 South: Follow Rt. 21 South (McCarter Highway) to Raymond Blvd. Turn Right on Raymond Blvd. Follow Raymond Blvd. past Warren Street traffic light and Fleisher Athletic Center, Naimoli Center, and Lubetkin Field at Mal Simon Stadium will be to your right (one soccer goal line runs along Warren Street and the soccer sideline parallels Lock Street).

New York Thruway: Thruway to Exit 14A, Garden State Parkway. Follow Garden State Parkway directions above.

George Washington Bridge: NJ Turnpike South to Exit 15W. Follow Route 280 West directions above.

Lincoln Tunnel: West on Rt. 3 to Rt. 21 South. Turn right onto Raymond Blvd. Follow Raymond Blvd. past Warren Street traffic light and Fleisher Athletic Center, Naimoli Center, and Lubetkin Field at Mal Simon Stadium will be to your right (one soccer goal line runs along Warren Street and the soccer sideline parallels Lock Street).

From Brooklyn, Queens and Long Island: Take Verrazano-Narrows Bridge (Interstate 278) and follow 278 across Staten Island. Cross Goethels Bridge. Follow signs to New Jersey Turnpike North then follow New Jersey Turnpike directions above.

PARKING

Bus/Van Parking: Visiting buses and vans may usually park on Lock Street adjacent to the athletic center. Please be careful not to block the parking space reserved for the doctor.

Visitor Parking: Visitor parking may be reserved in advance through your host. Otherwise, visitor parking at NJIT is available in the NJIT parking deck. Turn right onto Warren Street. Turn right onto Colden Street and proceed around the block to Summit Street. Parking Deck entrance is located to your right before the intersection with Warren Street.

Parking for on-campus athletic contests: NJIT is offering free off-street parking for fans attending regular season home soccer and volleyball matches and basketball games. The parking entrance, marked by a yellow sign is located on New Street.

OTHER TRANSPORTATION SYSTEMS

Newark Liberty International Airport: Minutes from the NJIT campus. A minibus (Newark Airlink) or taxi service connects the airport with Penn Station in Newark. Bus, Newark Light Rail, and taxi connections are available at the station.

Newark Penn Station: Located in downtown Newark, connections to the NJIT campus may be made by bus, Newark Light Rail, or taxi.

Morris & Essex Broad Street Station: A five-block walk to the NJIT campus via MLK Boulevard to Central Avenue. Taxi service is also available.

Newark Light Rail: From Penn Station in Newark, take the Warren Street stop for the NJIT campus. The Warren Street stop is on the sidewalk behind the press box for Lubetkin Field at J. Macolm Simon Stadium.

HOTELS DOWNTOWN

Hilton Newark Gateway
Gateway Center, Raymond Boulevard &
McCarter Highway
Newark, NJ, 973/622-5000

Robert Treat Hotel
50 Park Place, Newark, NJ, 973/622-1900

Hampton Inn & Suites Newark Riverwalk
100 Passaic Ave, Harrison, NJ, 973/483-1900

NEAR NEWARK LIBERTY INTERNATIONAL AIRPORT

Best Western Newark Airport West
101 International Way, Newark, NJ, 973/621-6200

Hilton Newark Airport
1170 Spring Street, Elizabeth, NJ, 908/351-3900

Holiday Inn Newark Liberty International Airport
160 Frontage Road, Newark, NJ, 973/589-1000



2015 Highlanders Women's Volleyball

DIVISION III
METRO CHAMPIONS
1986

DIVISION III
TOURNAMENT
1974 1975 1977

2015 HIGHLANDERS WOMEN'S VOLLEYBALL

AUGUST

CCSU Blue Devil Invitational

Fri.	28	Bucknell (at CCSU)
Sat.	29	Fairfield (at CCSU)
		CCSU

SEPTEMBER

St. Francis Brooklyn Terrier Invitational

Fri.	4	Valparaiso (at St. Francis Brooklyn)
Sat.	5	St. Francis Brooklyn
		Rider (at St. Francis Brooklyn)

Columbia Invitational

Fri.	11	Columbia
Sat.	12	American (at Columbia)
		Northeastern (at Columbia)

Lafayette Tournament

Fri.	18	at Rider (at Lafayette)	2:00 p.m.
		vs. St. Francis Brooklyn (at Lafayette)	8:00 p.m.
Sat.	19	at Lafayette	9:00 a.m.
Tues.	23	at Marist	7:00 p.m.
Fri.	25	LIPSCOMB *	7:00 p.m.
Sat.	26	PENN	5:00 p.m.
Wed.	30	at Saint Peter's	7:00 p.m.

OCTOBER

Fri.	2	FLORIDA GULF COAST *	7:00 p.m.
Sun.	4	STETSON *	12:00 p.m.
Fri.	9	at Jacksonville *	7:00 p.m.
Sat.	10	at North Florida *	1:00 p.m.
Wed.	14	SAINT PETER'S	7:00 p.m.
Fri.	16	KENNESAW STATE *	7:00 p.m.
Sun.	18	USC UPSTATE *	3:00 p.m.
Sat.	24	at Lipscomb *	1:00 p.m.
Wed.	28	FAIRLEIGH DICKINSON	7:00 p.m.
Fri.	30	at Kennesaw State *	7:00 p.m.
Sat.	31	at USC Upstate *	1:00 p.m.

NOVEMBER

Wed.	4	MANHATTAN	7:00 p.m.
Fri.	6	NORTH FLORIDA *	7:00 p.m.
Sun.	8	JACKSONVILLE (Senior Day) *	12:00 p.m.
Sat.	14	at Florida Gulf Coast *	7:00 p.m.
Sun.	15	at Stetson *	1:00 p.m.
Thu.-Sat.	19-21	Atlantic Sun Conference Tournament at Lipscomb	

Head Coach: Peter Volkert

Assistant Coaches:

Ariel Scott, Anthony Valbrun, Marc Solondz

CAPS/Bold = Home matches at Estelle and Zoom Fleisher Athletic Center

* Atlantic Sun Conference match