

ASHLEY CRAIG
& REBECCA WILKINSON



ASHLEY CRAIG
& MARTA OPORSKA



H
I
G
H
L
A
N
D
E
R
S



Photo: Michael Paras

The NJIT Campus Center

NJIT FACTS

Location:Newark, NJ 07102
Founded:1881 as Newark Technical School
Enrollment:5,800 full-time undergraduate (8,800 total)
Nickname:Highlanders
Colors:Scarlet and White with Navy
President:Dr. Robert A. Altenkirch
Director of Athletics:Lenny Kaplan
Interim Head Coach:Ryan McNeil
NJIT Record(Yrs.): 0-0 (as women's coach)
Career Record(Yrs.): same
Best Time to Reach:mornings
Affiliations:NCAA II, ECAC
Conference:Central Atlantic Collegiate (since 2000)
Home Arena:Entwisle Gymnasium (cap. 1,500)
First Year of Program:1982
All-Time Record:same
2004 Record:13-13
2004 Conference Record (Finish):12-8 (5)
Starters Returning/Lost:5/1
Letterwinners Returning/Lost:6/6
NJIT Athletics:973-596-3636
Coach McNeil:973-596-6498
McNeil E-Mail:McNeil@adm.njit.edu
Athletic Center Front Desk:596-5730
Sports Information Coordinator:Tim Camp
Office Phone:596-8461
Camp E-Mail:timothy.camp@njit.edu
Sports Information FAX:973-596-8440
Results Hotline:973-596-5555
URL: http://www.njit.edu/athletics

Quick Facts	IFC
Season Outlook	2
The Highlanders In Division I	3
University Administration	4
Coaching Staff	5
Roster	6
2004 Statistics and Results.....	7
Player Profiles	8-11
About NJIT	12-13
Athletics Facilities	15
About Newark	16
Happenings In and Around Newark.....	17
Program History	18
All-Time Honors	19
All-Time Roster	20
Directions to NJIT	21
Athletics/Physical Education Staff Directory.....	22
Alumni Hall of Fame	23
Central Atlantic Collegiate Conference	24
Team Picture	IBC
Schedule	OBC

MEDIA INFORMATION

This guide is designed to assist the media in their coverage of New Jersey Institute of Technology women’s volleyball. The NJIT sports information services department will provide an official NCAA box score 20 minutes after the conclusion of each home game.

All requests for interviews with players and coaches must be made through the sports information office, 973-596-8324. Following games, Coach McNeil and selected players will be available on the court following a 10-minute cooling-off period. All visiting radio broadcast requests should be made at least two weeks in advance.

CREDITS

The 2005 NJIT Women’s Volleyball Guide is a production of the NJIT sports information services department in cooperation with the Office of University Communications. Writing by Tim Camp. Special thanks to Michelle Paultner ('05) for research and editorial assistance. Additional editorial assistance by Lenny Kaplan and Stephanie Pillari. Front cover design by Johanna Moroch, Interior design by Samantha Horning. Photography by Jim Clarke and PM Studios, Edison, New Jersey. Printing by Prestige Graphics, Union, New Jersey.

WHY THE HIGHLANDERS?

The area on which the NJIT campus sits, now known as University Heights, was formerly called the Newark Highlands. The mailing address of the University used to be on High Street, until the road was re-named Dr. Martin Luther King Jr. Boulevard.

New Jersey Institute of Technology women's volleyball is a program on the move in more ways than one.

A year ago, the Highlanders, with five freshmen starting, were one of women's college volleyball's most improved teams, registering a double-digit improvement in wins over 2003.

Now Highlander volleyball is about to enter a new era, as the entire NJIT athletics program reclassifies to NCAA Division I from Division II.

The move toward Division I started in 2003, when men's soccer began the two-year, single-sport reclassification process. NJIT men's soccer is a full member of NCAA Division I this season. Women's soccer begins the same two-year, single-sport reclassification process this season and will reach full Division I status in 2007.

This summer, NJIT received the go-ahead from the NCAA to start the four-year reclassification of its entire athletics program, including women's volleyball, to Division I, with full Division I status arriving across the board in 2009-10.

The interim head coach of women's volleyball this season is Ryan McNeil, stepping in for Pavlina Klimova, who is taking a leave of absence, after serving as head coach the previous two seasons.

McNeil, who joined NJIT in August 2004, was the women's volleyball assistant last season. He is also head coach of NJIT men's volleyball and will continue in that post.

With the reclassification to NCAA Division I underway, this is NJIT's final season of competition in the Division II CACC. The Highlanders, 12-8 in the CACC regular season and an opening-match winner in 2004 conference postseason action, will play a full 22-match conference regular season slate in their CACC farewell.

In 2005, NJIT looks to blend six returnees, all regulars a year ago, with a

crop of newcomers that features a pair of impressive freshmen.

Returnees Kubra Tanrikulu, Lizzie Kreher, Rebecca Wilkinson and Ashley Craig were full-time starters as freshmen in 2004. Senior Marta Oporska gives NJIT a fifth returning full-time starter and sophomore Kasia Rusin contributed as a rookie in 2004.

The prized freshmen are Agnieszka PREGOWSKA, last year's New Jersey high school Player of the Year (as honored by the Star-Ledger and Gatorade) and two-time New York all-state setter Danielle Thompson.

Both bring championship backgrounds from the high school and club levels and should step into key roles, much as this season's sophomores did as freshmen in 2004.

Among the sophomores, the versatile Tanrikulu was second on the 2004 team in kills, assists service aces and total digs. Kreher, in addition to finishing third on the 2004 Highlanders in kills, was second in digs per game.

Thompson could get a starting nod at setter, although, 2004 assists leader Ashley Craig is a returnee, giving NJIT solid depth at a crucial position.

Marta Oporska, the only senior, is a veteran presence in the middle. She was team MVP as a freshman in 2001. After an injury-plagued couple of years, she came back to post a career-best 45 blocks in 2004.

Sophomore Kasia Rusin gained valuable experience as a freshman. Rebecca Wilkinson, the team's tallest player at 6-foot-1, was NJIT's blocks leader (49) in 2004 and also notched 44 service aces.

Also in the picture is 5-foot-11 junior newcomer Allison Hoogerhyde. The other junior newcomer, Renuska Papalexiou, is a transfer from Mercer County Community College, sophomore Jackie Quintanilla is a middle/outside hitter and freshman Jane Mettle is an outside hitter/defensive specialist.

New Jersey Institute of Technology athletics is on the move to the top level of college athletics--NCAA Division I.

The exciting news came this summer, when the NCAA gave NJIT the green light to reclassify its entire athletics program from Division II to Division I, a four-year process that will bring all Highlander sports to full Division I status and championship eligibility in 2009-10.

Two sports—men's soccer and women's soccer—are paving the way under NCAA rules that allow Division II or Division III schools to elevate one sport in each gender to Division I in a process that takes two years to complete.

NJIT men's soccer is already a full member of NCAA Division I, having arrived at championship eligibility in the 2005 season. The men's journey to the top level began in 2003, under the NCAA's two-year single-sport per gender reclassification process. Highlanders women's soccer is beginning a similar two-year process in 2005, with full Division I status and championship eligibility arriving in the 2007 season.

The larger process of advancing the entire program to NCAA I takes four years to complete and includes application, a detailed strategic plan and in-depth annual review of the institution's progress in moving toward its goal of complying with NCAA Division I rules and building a strong, broad-based athletics program.

New Jersey Institute of Technology's move to Division I has moved quickly since the November 2002 discussions among President Robert A. Altenkirch, Vice President Joel Bloom and Athletics Director Lenny Kaplan.

From there, came a proposal from Dr. Altenkirch to the Board of Trustees, which unanimously approved in February 2003 a plan to reclassify men's soccer to Division I. Little more than two years later, the NCAA has approved NJIT's proposal to advance its entire 15-sport program to Division I.

Along the way, scholarship and operating budgets have been enhanced, with expanded coaching staffs, increased scholarship dollars and upgraded facilities for competition and practice.

Upgrading athletics has been a priority for Dr. Altenkirch since he was selected as the seventh President of NJIT in May 2002.

"As NJIT continues to grow academically, and as a residential university, strengthening the athletics program through the transition to Division I will allow us to align the university athletically with our academic peers," said Altenkirch. "It will also enable us to recruit the best and brightest student-athletes, improve athletics facilities available to the entire NJIT community, gain regional and national visibility, and build strong linkages with students that will carry over to their days as alumni."



Dr. Robert A. Altenkirch

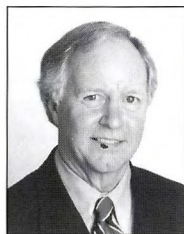
President

Dr. Robert A. Altenkirch, formerly vice president for research at Mississippi State University (MSU), joined NJIT as the university's seventh president in July 2002. During his tenure as MSU vice president for research, science and engineering, expenditures as reported to National Science Foundation (NSF) increased dramatically—75% from 1997 to 2001.

Prior to his appointment as vice president at MSU, Altenkirch served as professor of mechanical and materials engineering and dean of the College of Engineering and Architecture at Washington State University. From 1988 to 1995, he was professor of mechanical engineering and dean of the College of Engineering at MSU. He also served as professor and chair of mechanical engineering at the University of Kentucky.

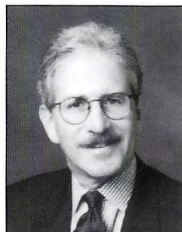
In addition to the research program, his responsibilities encompassed congressional relations, intellectual property management and economic development. While dean of engineering at MSU, he led the effort to secure National Science Foundation funding for the establishment of the MSU NSF Engineering Research Center for Computational Field Simulation in 1990. Additionally, the Center was instrumental in helping the State of Mississippi attract a \$1 billion Nissan manufacturing plant.

Altenkirch holds a PhD from Purdue University, an MS from the University of California, Berkeley, and a BSME from Purdue, all in mechanical engineering. He is the author of over 50 publications and nearly 100 presentations in combustion and heat transfer and served as principal investigator for ten Space Shuttle experiments investigating the spread of fire in reduced gravity. He is a Fellow of the American Society of Mechanical Engineers.



Dr. Joel Bloom

*Vice President of
Academic and Student Services*



Dr. Joel Bloom has worked at NJIT since July 1990. In his current position, he is responsible for nine divisions of the university, including Physical Education and Athletics.

Dr. Bloom is also Dean of the Albert Dorman Honors College, which enrolls more than 525 students who are typically in the top 10 percent of their high school graduating class.

Prior to NJIT, Dr. Bloom spent seven years as assistant Commissioner in the New Jersey Department of Education. He is currently the Chair of the NASULGC Council of Chief Student Affairs Officers and the Newark Consortium Board for Pre-College Education.

Dr. Bloom earned his Bachelor's and Master's Degrees from Hunter College, and holds a Master's and Doctorate from Columbia University Teachers College.

Lenny Kaplan

Director of Athletics



After serving 11 years in the athletics department at Division-I Manhattan College, Lenny Kaplan was appointed in August 2000 to head NJIT's division of physical education and athletics.

Kaplan is a 1988 graduate of St. John's University with a degree in athletics administration. After three years as Manhattan's director of operations, he served as an assistant athletics director with the Jaspers from 1991-2000.

Kaplan is the Central Atlantic Collegiate Conference Executive Committee Supervisor for men's basketball, and serves on the NCAA Division II nominating committee, the D-II Women's Soccer Regional Advisory Committee, and the Eastern Intercollegiate Volleyball Association Executive Committee.

Kaplan resides in Merrick, New York, with his wife, Nancy, and their sons, Michael and Joshua.

Ryan McNeil

Interim Head Coach

Ryan McNeil is the Interim Head Coach of women's volleyball this season, filling in for Pavlina Klimova, who is taking a leave of absence, having been head coach the previous two seasons.

McNeil, who joined the NJIT coaching staff in August 2004, was an assistant coach for women's volleyball last season. He is also NJIT's head men's volleyball coach, a position he continues to hold.

In 2004-05, McNeil assisted Klimova for one of the biggest improvements in women's college volleyball and then he guided the Highlanders men to their best record since 2000. The NJIT women made a double-digit improvement in wins from 2003 to 2004 and the men improved by eight wins over the previous season.

Quality volleyball, indeed, championship volleyball is nothing new to McNeil, who was a standout player in both Canada and the United States.

Later, as an assistant coach at Lewis University in Illinois, he helped coach the men's team that won the 2003 national championship and the women's team that qualified for two NCAA Tournaments.

A native of Montego Bay, Jamaica, McNeil resided in Ontario, Canada, for 15 years. He began his college playing career at Sheridan College in Brampton, Ontario, where he was named team Most Valuable Player and *Sheridan Sun* Most Noteworthy Athlete. Moving on to Ryerson University in Toronto, he earned team MVP honors, as well as all-conference recognition.

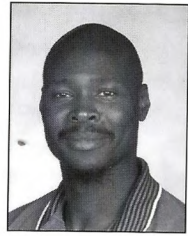
Transferring south of the border to Lewis University in Romeoville, Illinois, McNeil played on the Flyers' 1998 national semifinalists.

He turned to coaching at Lewis, where he was an assistant with both the men's and women's teams. In his two years as an assistant with the men, Lewis qualified for the NCAA tournament twice, won two Midwest Intercollegiate Volleyball Conference crowns and captured the national title in 2003.

He coached with the Lewis women for four seasons, including two as a graduate assistant. During his tenure, the Flyers had seven all-conference players, made the NCAA Tournament twice and achieved national ranking in 2002.

McNeil's first head coaching assignment, with the NJIT men's team, got off to a fine start, as the Highlanders posted an 11-11 overall record, including a 6-5 mark in the Eastern Intercollegiate Volleyball Association.

A resident of Kearny, NJ, McNeil is NJIT's co-director of intramurals.

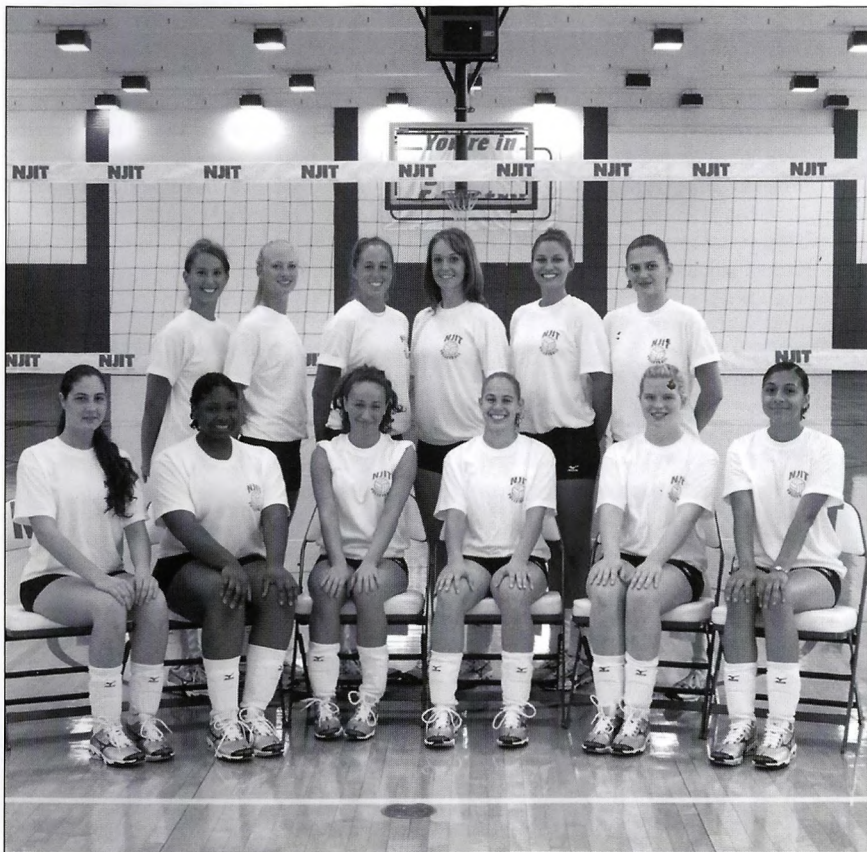


NJIT HEAD COACHES' CAREER RECORDS

Coach	Years	(No.)	W	L	Pct.
Oleg Moiseenko	1982	(1)	1	11	.083
Dave DeNure	1983-91	(9)	150	93	.617
Kerry Keith	1992	(1)	11	13	.458
Bob Fordj	1993-95	(3)	24	53	.312
Jon Bednasz	1998-99	(2)	1	27	.036
Manny Del Rio	2000	(1)	0	16	.000
Anthony Valbrun	2001-02	(2)	0	38	.000
Pavlina Klimova	2003-2004	(2)	13	34	.276
Total	21 yrs.		200	285	.412

NO	NAME	YR	POS	HT	HOMETOWN/HIGH SCHOOL
1	Kubra Tanrikulu	SO	OH/S	5'8	Manahawkin, NJ/Southern Regional
2	Renuska Papalexioiu	JR	OH	5'9	Mercerville, NJ/Hightstown
3	Agnieszka Pregowska	FR	RS	5'11	Bridgewater, NJ/Bridgewater-Raritan
4	Marta Oporska	SR	OH	6'0	Clifton, NJ/Clifton
5	Danielle Thompson	FR	S	5'11	Stony Brook, NY/Ward Melville
7	Jackie Quintanilla	FR	OH	5'8	Newark, NJ/Technology
9	Kasia Rusin	SO	MB	6'0	Clifton, NJ/Clifton
10	Elizabeth Kreher	SO	RS/OH	5'9	East Greenwich, RI/Greenwich
11	Rebecca Wilkinson	SO	MB	6'1	Gaithersburg, MD/Gaithersburg
12	Ashley Craig	SO	S	5'6	Laurel, MD/Laurel
13	Allison Hoogerhyde	JR	MH	5'11	Franklin Lakes, NJ/ Indian Hills
15	Jane Mettle	FR	OH	5'8	South Orange, NJ/Columbia

Interim Head Coach: Ryan McNeil (Lewis '01)



Overall record: 13-13 Conf: 12-8 Home: 7-2 Away: 6-7 Neutral: 0-4

#	Name	GP	MP	MS	ATTACK			SET		SERVE				
					K	K/Game	E	TA	Pct	A	A/Game	SA	SA/Gm	SE
1	KULKARNI, Sita	24	8	0	1	0.04	1	2	.000	2	0.08	0	0.00	0
2	TANRIKULU, Kubra	93	26	26	146	1.57	103	597	.072	137	1.47	48	0.52	41
4	OPORSKA, Marta	84	25	24	50	0.60	52	180	-.011	2	0.02	14	0.17	32
5	CASADO, Angie	93	26	26	516	5.55	191	1180	.275	14	0.15	57	0.61	49
6	RUSIN, Kasia	36	14	4	26	0.72	15	90	.122	4	0.11	6	0.17	7
7	BOYADJIS, Theodora	5	3	0	0	0.00	0	1	.000	0	0.00	0	0.00	2
8	SAMPER, Jessica	3	3	0	0	0.00	0	0	.000	0	0.00	0	0.00	1
10	KREHER, Lizzie	86	25	24	144	1.67	93	514	.099	24	0.28	29	0.34	36
11	WILKINSON, Rebecca	93	26	26	131	1.41	74	417	.137	11	0.12	44	0.47	36
12	CRAIG, Ashley	82	24	24	46	0.56	21	161	.155	712	8.68	27	0.33	24
14	MARTINEZ, Dolores	26	8	1	0	0.00	0	1	.000	1	0.04	10	0.38	11
15	QUINTERO, Veronica	45	13	0	0	0.00	0	5	.000	4	0.09	3	0.07	9
	NJIT.....	93	26	26	1060	11.40	550	3148	.162	911	9.80	238	2.56	248

#	Name	G	RE	DIG	Dig/G	BLOCKING			BE	BHE	POINTS	
						BS	BA	Total B/Game				
1	KULKARNI, Sita	24	2	15	0.62	0	0	0	0.00	0	0	1.0
2	TANRIKULU, Kubra	93	40	214	2.30	0	7	7	0.08	2	11	197.5
4	OPORSKA, Marta	84	3	40	0.48	14	31	45	0.54	15	4	93.5
5	CASADO, Angie	93	26	314	3.38	8	20	28	0.30	5	3	591.0
6	RUSIN, Kasia	36	2	17	0.47	4	9	13	0.36	2	3	40.5
7	BOYADJIS, Theodora	5	0	1	0.20	0	0	0	0.00	0	0	0.0
8	SAMPER, Jessica	3	0	3	1.00	0	0	0	0.00	0	0	0.0
10	KREHER, Lizzie	86	61	201	2.34	5	14	19	0.22	7	8	185.0
11	WILKINSON, Rebecca	93	48	186	2.00	25	24	49	0.53	22	8	212.0
12	CRAIG, Ashley	82	3	135	1.65	5	17	22	0.27	6	41	86.5
14	MARTINEZ, Dolores	26	2	20	0.77	0	0	0	0.00	0	0	10.0
15	QUINTERO, Veronica	45	20	87	1.93	0	0	0	0.00	0	4	3.0
	TEAM			40								
	NJIT.....	93	247	1233	13.26	61	122	122.0	1.31	59	82	1420.0

Date	Opponent	Score	Score-by-game	Overall Record	Conference Record	Time	Attend
Sep 08, 2004	at Queens (NY)	0-3 L	10-30, 16-30, 18-30	0-1	0-0	0:58	46
* Sep 11, 2004	at USF	0-3 L	28-30, 25-30, 30-32	0-2	0-1	1:35	65
* Sep 11, 2004	vs Bloomfield	2-3 L	30-23, 30-27, 28-30, 28-30, 13-15	0-3	0-2	2:06	18
* Sep 16, 2004	at Felician	W 3-0	30-8, 30-18, 30-20	1-3	1-2	0:50	120
* Sep 18, 2004	NYACK	W 3-1	30-25, 30-25, 28-30, 30-20	2-3	2-2	1:48	72
* Sep 18, 2004	UNIV. OF THE SCIENCE	W 3-1	30-19, 27-30, 30-24, 35-33	3-3	3-2	1:41	88
* Sep 21, 2004	TEIKYO POST	1-3 L	30-25, 15-30, 28-30, 21-30	3-4	3-3	1:45	130
* Sep 23, 2004	at Nyack	W 3-0	33-31, 30-26, 30-23	4-4	4-3	1:30	75
* Sep 25, 2004	GOLDEY-BEACON	W 3-0	31-29, 30-26, 30-25	5-4	5-3	1:23	70
* Sep 25, 2004	HOLY FAMILY	W 3-0	30-22, 30-22, 30-23	6-4	6-3	1:10	65
* Sep 28, 2004	FELICIAN	W 3-0	30-13, 30-15, 30-19	7-4	7-3	1:01	74
* Sep 30, 2004	DOMINICAN (NY)	W 3-2	30-20, 30-21, 24-30, 18-30, 15-12	8-4	8-3	1:49	124
* Oct 02, 2004	at Teikyo Post	0-3 L	25-30, 28-30, 20-30	8-5	8-4	1:15	70
* Oct 02, 2004	vs Wilmington (DE)	0-3 L	10-30, 16-30, 12-30	8-6	8-5	1:05	20
* Oct 09, 2004	WILMINGTON (DE)	0-3 L	17-30, 11-30, 30-32	8-7	8-6	1:22	110
* Oct 12, 2004	at Holy Family	W 3-1	30-25, 22-30, 30-18, 30-21	9-7	9-6	1:36	35
* Oct 14, 2004	at Georgian Court	W 3-1	32-30, 30-23, 25-30, 30-24	10-7	10-6	1:45	75
Oct 16, 2004	at Molloy	2-3 L	30-15, 30-20, 23-30, 20-30, 11-15	10-8	10-6		
* Oct 19, 2004	at Bloomfield	W 3-2	30-28, 28-30, 32-30, 20-30, 15-11	11-8	11-6	2:15	50
* Oct 23, 2004	at Goldey-Beacon	0-3 L	20-30, 14-30, 20-30	11-9	11-7	1:13	100
Oct 23, 2004	vs Delaware State	0-3 L	22-30, 16-30, 22-30	11-10	11-7	1:09	40
Nov 01, 2004	at Concordia (NY)	0-3 L	14-30, 18-30, 29-31	11-11	11-7		
* Nov 4, 2004	at Dominican (NY)	0-3 L	23-30, 32-34, 26-30	11-12	11-8		50
Nov 05, 2004	GEORGIAN COURT	W 3-1	27-30, 30-25, 30-23, 30-24	12-12	12-8	1:55	87
* Nov 09, 2004	at USF	W 3-1	30-28, 22-30, 30-22, 30-24	13-12	12-8	1:51	75
* Nov 12, 2004	vs Wilmington (DE)	0-3 L	19-30, 23-30, 16-30	13-13	12-8	1:10	70

* CACC Tournament

TEAM RECORD	W-L	ATTEND	Dates	Total	Average		
Overall:	13-13	Total:	26	1729	66		
Conference:	12-8	Home:	9	820	91		
		Home:	13	761	59		
		Away:	6-7	Neutral:	4	148	37
		Neutral:	0-4				
		3 games:	5-10				
		4 games:	6-1				
		5 games:	2-2				

1

KUBRA TANRIKULU

Sophomore • OH/S • 5-8
Manahawkin, NJ/Southern Regional



2004: Started every game as a freshman ... second on the team in digs (214), kills (146), assists (137)

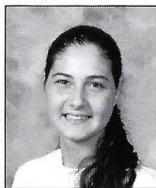
Prior to NJIT: Team MVP for coach Eric Maxwell at Southern Regional... teams won two conference championships... also a member of the swim team... won two tournament MVP awards while playing for the South Jersey Volleyball Club.

Personal: Brother Emin Tanrikulu is her legal guardian... Emin is the assistant coach at conference rival Georgian Court University... chemistry major... born 9/9/86 in Adona, Turkey.

2

RENUSKA PAPALEXIOU

Junior • OH • 5-9
Mercerville, NJ/Heightstown/Mercer CC



Earned a spot on the team as a walk-on ... did not play volleyball in high school.

Personal: Daughter of Nicolaw and Anny Papalexiou... majoring in Architecture ... born 10/1/83 in Sao Paulo, Brazil

3

AGNIESZKA PREGOWSKA

Freshman • RS • 5-11
Bridgewater, NJ/Bridgewater-Raritan



Expecting her to make an immediate impact on the team... we will look for her leadership skills on the court ... she is the most well rounded player on the team.

Prior to NJIT: Played for coach Corey Romanak at Bridgewater-Raritan High School in Bridgewater ... Selected numerous times on the All-State Team ... All Individual Player and First Team All-State 2004-05 ... MVP at the Tournament of Champions 2004-05 ... State Champions 2003-04 & 2004-05 ... Player of the Year for New Jersey 2004-05 ... Gatorade Player of the Year 2004-05 ... Selected on the All-America Team by PrepVolleyball.com

Personal: Daughter of Maciej and Joanna Pregowska ... Father Maciej Pregowska played national league in Poland for 10 years ... majoring in Architecture ... born 8/18/86 in Warsaw, Poland.

4

MARTA OPORSKA

Senior • OH • 6-0
Clifton, NJ/Clifton



2004: Played in 84 games ... second on the team in total blocks (45)

2003: Limited by injury to 12 matches... led team in kills (36) and blocks (10).

2002: Medical redshirt season.

2001: Team MVP... led the Highlanders in kills (74), blocks (16) and aces (10).

Prior to NJIT: Was all-county in track at Clifton High... also participated in swimming.

Personal: Daughter of Malgorzata Oporska... business management major... hopes to work in the sports industry... born 8/20/83 in Warsaw, Poland.

5

DANIELLE THOMPSON

Freshman • S • 5-11
Stony Brook, NY/Ward Melville



Brings experience as a setter, mentally tough player and competitor ... expected to provide leadership

Prior to NJIT: Played for coach Charles Fernando at Ward Melville in New York ... named First Team All-State, All-County Tournament Team Player and League Player of The Year in 2004... team won the 2004 State Champions and League Champions in 2003-2004... MVP of the 2003 Glen Tournament...played club volleyball for The Island Volleyball Academy for coach Kristen Broadbent

Personal: Daughter of Donald and Renee Thompson ... majoring in Architecture ... born 10/8/87 in Stony Brook, New York.

7

JACKIE QUINTANILLA

Freshman • OH • 5-8
Newark, NJ/Technology



Adds depth to the offense ... has made a big improvement since joining the team this past spring

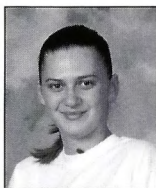
Prior to NJIT: Played for coach Angelo Velasquez at Technology High School in Newark... Named Scholar-Athlete & Team MVP in 2004 ... Played softball in high school...Participant in the North Jersey All-Star game in 2004

Personal: Daughter of Jario and Elida Quintanilla ... majoring in mechanical engineering ... born 5/2/86 in San Francisco, California

9

KASIA RUSIN

Sophomore • MB • 6-0
Clifton, NJ/Clifton



2004: Played in 36 games with 26 kills, 17 digs, 13 blocks

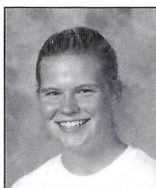
Prior to NJIT: Second-team All-Passaic County for coach Michael Doktor at Clifton High... also played basketball... played at the club level for the Garden Empire Volleyball Association.

Personal: Daughter of Andrzej and Bogumila Lojek... management major... cousins Lukasz and Richard Lojek are NJIT graduates... will wear No. 6 on her visiting red uniform... lists eating as a hobby... favorite food is grilled chicken salad... born 5/12/85 in Krakow, Poland.

10

LIZZIE KREHER

Sophomore • RS/OH • 5-9
East Greenwich, RI/Greenwich



2004: Appeared in 86 games ... third on the team in digs (201) and kills (144)

Prior to NJIT: MVP of the 2004 state tournament for coach Rebecca Schmidt at East Greenwich High... team won the 2004 state championship and were state finalists three times... three-time all-division selection... was a captain in both volleyball and field hockey... played club volleyball for coach Bob Schneck on the Rhode Island junior Rams.

Personal: Daughter of Patricia Kreher... majoring in chemical engineering... favorite quote is, "If you are going to do something, do it right!" ... born 3/9/86 in New Orleans, La.

11

REBECCA WILKINSON

Sophomore • MB • 6-1
Gaithersburg, MD/Gaithersburg



2004: One of just two Highlanders to start every match ... led the team in blocks (49)

Prior to NJIT: Played on three regional champions and three divisional championship teams for coach Michelle Dillingham at Gaithersburg High... also played basketball and was a hurdler for the track team... her Metro American Volleyball Club team finished 11th on the East Coast in 2002 under coach Sam Danai.

Personal: Daughter of Bruce and Linda Wilkinson... management major... lists volleyball and eating among her hobbies... dream job is a Supreme Court justice... born 6/11/86 in Hartford, Conn.

12

ASHLEY CRAIG

Sophomore • S • 5-6
Laurel, MD/Laurel



2004: As a freshman led the team in assists (712) averaging 8.68 per game ... was fifth on the team in digs (135)

Prior to NJIT: Two-year captain and two-time all-county for coach Dale Brennan at Laurel High... team was a county runner-up... also played basketball... was a club teammate of current Highlander Rebecca Wilkinson for the Metro American Volleyball club... earned Knights of Columbus Award... graduated in the top ten percent of her class.

Personal: Daughter of Maria DiSimone... majoring in biomedical engineering... favorite part of volleyball is seeing a hitter get a kill on one of her sets... born 1/4/86 in Silver Spring, Md.

13

ALLISON HOOGERHYDE

Junior • MH • 5-11
Franklin Lakes, NJ/Indian Hills



Improved tremendously since joining the team this spring and brings athleticism and size to the front row ...

Prior to NJIT: Played for coach Elaine Gagis at Indian Hills High School...Member of the softball and basketball team in high school.

Personal: Daughter of Debbie and Randall Hoogerhyde... Allison will major in Architecture... born 4/13/85 in Ridgewood, NJ

15

JANE METTLE

Freshman • OH • 5-8
South Orange, NJ/Columbia



Anticipated to provide depth for our defense.

Prior to NJIT: Played club volleyball for Essex Maples.

Personal: Daughter of Doreen and Joseph Mettle... majoring in communications ... born 4/4/87 in New York, NY

NJIT's Campus Center, opened in September 2004, is the final phase of a three-year, \$83.5-million campus makeover. It is designed to be the focal point of a vibrant campus life. The center features a soaring, two-story circular dining hall, sheathed in gleaming, double-pane, energy-conserving glass.

The construction program encompasses two tall multi-story buildings – the East Building, housing the Albert Dorman Honors College, the Department of Biomedical Engineering, and administrative offices, and the center itself, featuring dining facilities, student offices and lounges, game rooms, campus store and ballroom. The two buildings are connected by a sky bridge, and a European-style piazza featuring a 55-foot clock tower.

In an effort to improve communication and socialization on the 45-acre urban campus, the architects scaled the complex to create the feel of an outdoor room and give more spatial definition to the campus. "To promote socializing, we wanted to encour-

age people to move through spaces, not around them," said Thomas Levering, associate partner at the architectural firm.

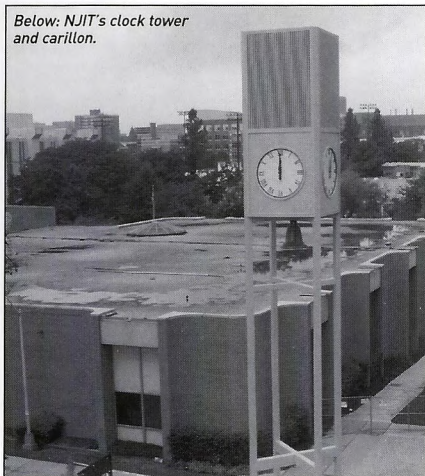
The new round campus dining hall adds height and verve plus doubles the dining space. Its smoky gray glass provides a strong presence on the campus green. A 28,000 square-foot, rooftop grass terrace crowns it. Paths around it reroute traffic to the center. The clock tower stands adjacent to one entrance to the center. The donated tower features a carillon that will chime hourly.

The construction represents a major portion of more than a \$100 million facilities improvement plan. Completed are additional residence space and an additional building for the business incubator program. Upgrades in the works include two of NJIT's oldest buildings, Cullimore and Eberhardt halls, located adjacent to the complex.

"A good-looking center tells a visual story," said Levering. "A center with the right stuff says life outside the classroom is as important as life within it."



Below: NJIT's clock tower and carillon.



NJIT's history spans from the Industrial Revolution to the Information Age. Newark was a factory town when the tuition-free evening school was founded in 1881 to support local industries. From the early days, science and technology have been the engines fueling the university's development.

Over time, the university both anticipated and responded to change by expanding its curriculum and mission. Most notably, in 1919, the university established baccalaureate programs in three engineering fields. By 1975, NJIT offered a broad range of undergraduate and graduate degrees. All programs included significant research and public service components with the goal of providing an academic environment that fostered intellectual depth and breadth, as well as social responsibility.

Today, continuing a fourfold mission of instruction, research, economic development and public service, NJIT is among the leading comprehensive technological universities in the nation. The university offers 92 degree programs in 33 undergraduate majors, 40 masters and 19 doctoral programs. It has state-of-the-art facilities on a 45-acre campus in Newark and a solar observatory in Big Bear, California.

NJIT'S SIX COLLEGES

While there has been tremendous growth and diversification at NJIT, its roots are in engineering education. For more than eight decades, Newark College of Engineering (NCE) has been preparing engineering students to use science, mathematics, technology and problem-solving skills to design, construct, test and maintain products, services, and information systems.

The New Jersey School of Architecture, established in 1973, is one of the largest architecture schools in the nation and is recognized for the innovative integration of computer technology into the design curriculum.

The College of Science and Liberal Arts (CSLA), established in 1982, is moving into the forefront of many national research activities from solar astronomy to computational and mathematical modeling. CSLA provides students with the skill sets for the professional marketplace including literacy in the computer, mathematical, physical and biological sciences, as well as the traditional liberal arts disciplines.

The School of Management, established in 1988, combines the best of the traditional business disciplines (e.g., finance, marketing, accounting, e-commerce) with the power of information and technology management to develop professionals who can manage and communicate effectively.

The Albert Dorman Honors College, established in 1993, offers one of the nation's leading technologically oriented honors programs for students who are prepared to undertake a rigorous and individualized course of study.

The College of Computing Sciences, established in 2001, encompasses a department of computer science, focused on both the theoretical areas of computing and the development of new computer technology, as well as a department of information systems, concentrated on applications involving people and organizations.

NJIT: NEW JERSEY'S TECHNOLOGICAL RESEARCH UNIVERSITY

NJIT plays a critical role in shaping New Jersey's future. As a major public technological university, NJIT is an important conduit through which technology flows into society. The university's educational programs prepare students to be leaders in the technology-dependent economy of the 21st century. University researchers seek new knowledge to improve processes and products for industry. Through public and private partnerships and economic development efforts, the university hopes to grow new business ventures that fuel the economy.

In addition to its degree programs, the university offers a full spectrum of resources in technological specialties including:

- *enrichment programs for professionals through the Division of Continuing Professional Education.*
- *programs designed to attract elementary and high school students through careers in technology.*
- *extensive eLearning courses.*
- *selected courses available at locations throughout New Jersey.*

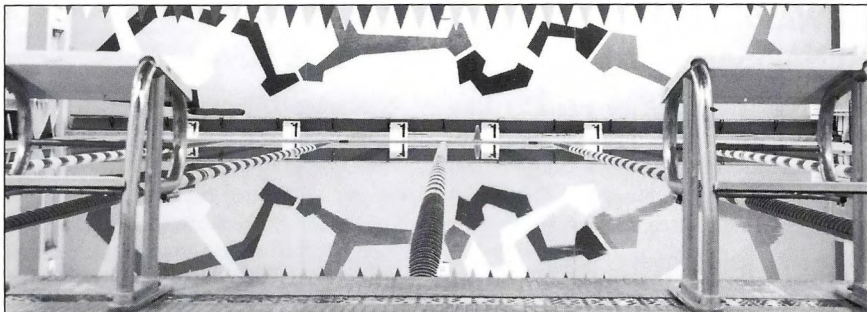
A strong applied research program is the very core of the technological research university, generating the advances that fuel a knowledge-based economy. NJIT's research programs have grown exponentially over the past 25 years, from a total expenditure of \$500,000 in 1978 to more than \$75 million today. The university conducts cutting-edge applied research through multidisciplinary centers of excellence, specialized high-tech labs, and partnerships with industry to develop commercially promising new technologies.

NJIT is committed to economic development for Newark, New Jersey, and the region. The university operates several outreach centers that provide direct technical assistance to the state's businesses with the goal of helping small and medium-sized companies become more productive, profitable, and globally competitive.

NJIT is also the home of New Jersey's oldest and largest incubator facility, and was one of the first institutions in the nation to adopt economic development as a fourth mission element. The university's research centers work in collaboration with corporate partners to speed technology transfer, and numerous outreach programs help businesses become more productive. Extensive initiatives in transportation research based at the university focus on the infrastructure New Jersey needs for a thriving economy.



Laurel Hall



The NJIT soccer teams play their home games at Lubetkin Field, a lighted campus facility, with a newly-installed SprinTurf surface, adjacent to the Estelle and Zoom Fleisher Athletic Center.

Lubetkin contains a scoreboard and pressbox facilities and has bleacher seating for approximately 1,000 spectators. Lubetkin is also used for club sports and intramural events, as well as by the NJIT baseball team for practice.



The soccer teams also have access to all of the other facilities in the athletic center. These include the fitness area (containing computer-controlled biking equipment, Cybex resistance units, and an indoor track), a free-weight room and a hammer-strength weight room, four racquetball courts (which can be converted for squash), a martial arts center, and an aerobics/dance studio.

The NJIT men's and women's basketball and volleyball teams play their home games in Entwisle Gymnasium, the main facility in the Fleisher Center. Entwisle seats approximately 1,500 spectators. The back bay, 'C

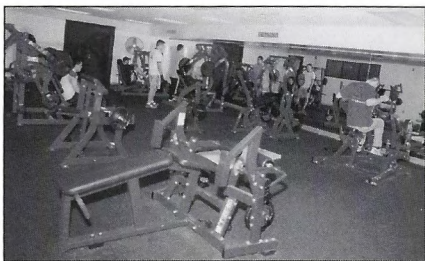
gym,' area can be sectioned off from the main floor, making the entire gymnasium useful for intramurals, physical education classes, and campus recreation time, and able to host multiple events simultaneously.

A six-lane swimming pool is home to NJIT's men's and women's swimming teams, while the two varsity tennis squads utilize the four lighted outdoor hardcourt tennis courts behind the building. The newly-renovated Campus Center houses six regulation bowling lanes.

Bears & Eagles Riverfront Stadium in downtown Newark, the facility of the Newark Bears of the Atlantic League, became the home of the Highlanders baseball squad in 2004.

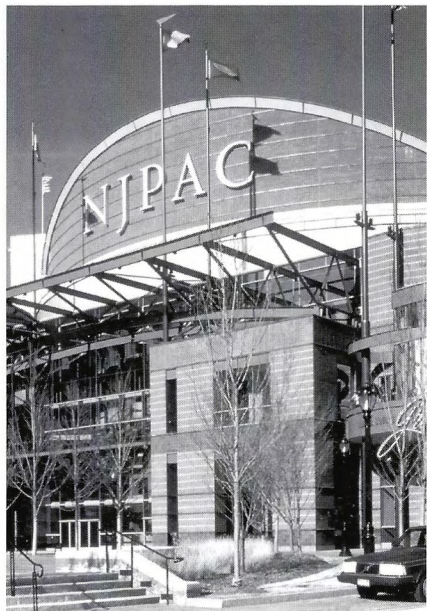
NJIT offers several club sports, including cricket, judo, men's lacrosse, and track and field, plus a full intramural program.

Each NJIT student must pass two physical education classes as a graduation requirement. Offerings include aerobics, archery, bowling, dance, fencing, golf, karate, swimming, skiing, strength training and conditioning, volleyball and water safety.



NEWARK: THE RENAISSANCE CITY

NJIT is located in the heart of New Jersey's largest city. A major urban center, Newark is a city on the move. Some 30,000 undergraduate, graduate and professional students attend classes in University Heights at the city's four public institutions of higher learning: NJIT, Rutgers-Newark, the University of Medicine and Dentistry of New Jersey, and Essex County College.



Attractions in Newark's revitalized downtown include:

- *The Newark Museum*
- *New Jersey Performing Arts Center*
- *The Newark Public Library*
- *Symphony Hall*
- *Branch Brook Park*
- *Art galleries, restaurants, and shopping*
- *An urban architectural laboratory*
- *Professional minor league baseball (Newark Bears)*

NEWARK: NEW JERSEY'S COLLEGE TOWN

Adjacent to NJIT is the Newark campus of Rutgers University.

NJIT and Rutgers enjoy an exceptionally close and productive consortial relationship within the thriving University Heights section of Newark. NJIT and Rutgers students have library privileges at both campuses. NJIT students may also enrich their educational experience by enrolling in Rutgers-Newark courses and in full degree programs in disciplines not offered at NJIT, such as art, music, geology and psychology.

Each year the two universities co-sponsor a common season of theatrical productions, as well as 'World Week,' a joint program of honors colloquia, and a variety of other cultural and social activities.

NEW JERSEY/NEW YORK METROPOLITAN REGION

The NJIT campus is in one of the nation's most exciting cultural and business regions. Advantages include:

- *Minutes from New Jersey Performing Arts Center, Liberty Science Center, Meadowlands Sports Complex, Manhattan and all of its attractions, Newport Center Mall, and Secaucus Outlet Center.*
- *Discount tickets for Broadway shows, museums, concerts, and sporting events.*
- *Weekend trips throughout the Northeastern United States: skiing, boating, swimming, hiking, and more.*
- *The spectacular Jersey shore is less than one hour away.*



MetroStars Stadium

"The MetroStars plan to build a \$92.2 million stadium that would give the Major League Soccer club a home of their own.... the team, expects the new 20,000-seat venue to open in June 2007. "

Newark/New Jersey Devils Arena

"Officials from both the city of Newark and the New Jersey Devils.... unveiled the design for the long-awaited Newark/New Jersey Devils Arena. The facility is being planned as the centerpiece of the city's Downtown Core Redevelopment Project."

The proposed 17,000-plus seat, arena is scheduled to be ready for the 2007 season.



A new 800 bed housing facility is being constructed adjacent to the university. It is scheduled for opening in the Fall of 2006.

Year	Record	WIAC	IAC	Jersey 9	NYCAC	CACC	Postseason	Head Coach	Captains	MVP
1982	1-11	—	—	—	—	—	—	Oleg Moiseenko	Heidi Hartung, Becky Miranda	
1983	6-15	—	—	—	—	—	—	Dave DeNure	Heidi Hartung, Becky Miranda	Sharon Ingram
1984	10-5	2nd	—	—	—	—	—	Dave DeNure	Heidi Hartung, Becky Miranda	Becky Miranda
1985	14-6	1st	2nd	—	—	—	—	Dave DeNure	Eileen Begasse, Marilyn Dawson	Marilyn Dawson
1986	24-8	1st	1st	—	—	—	—	Dave DeNure	Marilyn Dawson	Clairie Nicolaou
1987	22-8	2nd	2nd	—	—	—	ECAC semis	Dave DeNure		Clairie Nicolaou
1988	26-6	1st	1st	—	—	—	ECAC semis	Dave DeNure	Liz Goldrick, Felicia Mays	Liz Goldrick
1989	15-17	2nd	2nd	—	—	—	—	Dave DeNure	Denise Corsaro	Denise Corsaro
1990	23-12	2nd	2nd	1st	—	—	—	Dave DeNure	Kathy Eng	Kathy Eng
1991	10-16	—	—	—	—	—	—	Dave DeNure		Kathy Eng
1992	11-13	2nd	2nd	4th	—	—	—	Kerry Keith	Kathy Eng	Kathy Eng
1993	7-20	3rd	—	—	—	—	—	Bob Fordi	Diana Nieto, Bonnie Tai	Donna King
1994	9-14	3rd	2nd	—	—	—	—	Bob Fordi	Lenny Jiminez, Bonnie Tai	Lenny Jiminez
1995	8-19	—	—	—	—	—	—	Bob Fordi	Sandra Caceras	Lenny Jiminez
1996 no team										
1997 no team										
1998	0-10	—	—	—	12th	—	—	Jon Bednasz		Melsha Winchester
1999	1-17	—	—	—	12th	—	—	Jon Bednasz		Melsha Winchester
2000	0-16	—	—	—	—	8th	—	Manny Del Rio	Nikeisha Joseph	Carisa Butensky
2001	0-20	—	—	—	—	8th	—	Anthony Valbrun	Nikeisha Joseph	Marta Oporska
2002	0-18	—	—	—	—	9th	—	Anthony Valbrun	Eliana Lara, Stacy Waldburger	Chevanese Samms
2003	0-21	—	—	—	—	10th	—	Pavlina Klimova	Dolores Martinez	Dolores Martinez
2004	13-13	—	—	—	—	5th	—	Pavlina Klimova	Dolores Martinez	Angie Casado

Note: All blank information is missing. Anyone with documentable proof of missing information, or corrections to the above, is asked to contact the sports information office at (973) 596-8324 or mentone@adm.njit.edu.

Postseason Appearances

ECAC D-III Metro 1987, 1988

Conference Championships

WIAC
1985, 1986, 1988
IAC
1986, 1988

Conference Player of the Year

IAC
1988 - Sonia Zacher

GTE Regional Academic All-America

1988 - Sonia Zacher

All-WIAC

1984
Eileen Begasse
Marilyn Dawson
Heidi Harting

1985
Eileen Begasse
Marilyn Dawson
Liz Goldrick

1986
Marilyn Dawson
Clairie Nicolaou

1987
Clairie Nicolaou

1988
Denise Corsaro
Liz Goldrick
Gina Ochs (2nd)
Sonia Zacher

1989

Denise Corsaro
Kathy Eng (2nd)
Ursula Fukazawa (2nd)
Yanet Gonzalez

1990

Kathy Eng
Yanet Gonzalez
Gina Ochs
Joanie Pratt

1991

Kathy Eng
Connie Krzeminski (HM)

1992

Kathy Eng

1995

Wendy Gruenewald (HM)
Lenny Jiminez

All-IAC

1986
Denise Corsaro
Marilyn Dawson
Liz Goldrick (2nd)
Clairie Nicolau
Regina Rygelis (2nd)

1987

Liz Goldrick
Clairie Nicolaou
Gina Ochs (2nd)
Sonia Zacher (2nd)

1988

Denise Corsaro
Liz Goldrick
Yanet Gonzales (2nd)
Gina Ochs
Sonia Zacher

1989

Denise Corsaro
Kathy Eng (2nd)
Ursula Fukazawa (2nd)
Yanet Gonzalez

1990

Kathy Eng
Ursula Fukazawa
Yanet Gonzalez
Gina Ochs
Joanie Pratt

1991

Kathy Eng
Connie Krzeminski
Kathy Liu (HM)

1992

Kathy Eng
Kathy Liu (2nd)
Tulia Rios (2nd)
Edyta Wrona

1993

Donna King (2nd)

1995

Wendy Gruenewald (2nd)
Lenny Jiminez (2nd)

All-Jersey 9

1990

Kathy Eng

1991

Kathy Eng
Connie Krzeminski

1992

Kathy Eng

1993

Donna King
Clara Ponton

CACC Newcomer

2004

Angie Casado

National Statistical Leaders NCAA

1989 Division III

Yanet Gonzalez - *services aces per game*

1991 Division III

Kathy Eng - *services aces per game*

2004 Division II

Angie Casado - *38th aces per game*

Angie Casado - *4th kills per game*

A

APPLEBY, Emma 00, 01, 03
 ALMAGRO, Sandy 99
 ALVARDO, Karla 91, 92, 93, 94
 ALVAREZ, Mildred 92

B

BAEZ, Aliza 91
 BEGASSE, Eileen 83, 84, 85, 88
 BERNAL, Marelis 03
 BERROA, Beverly 99, 00, 02
 BROWN, Jessica 87
 BUTENSKY, Carisa 00, 01
 BORILLA, Anna 98
 BOYADJIS, Theodora 04

C

CACERAS, Sandra 92, 93, 95
 CAMEROTA, Laura 93
 CASADO, Angie 04
 CHIRINOS, Gladys 98
 CHOI, R. 82
 CHOY, Yvonne 94, 95
 CONTALDI, Natalie 85, 86
 CORSARO, Denise 85, 86, 88, 89
 CRAIG, Ashley 04
 CRUZ, Iris 91

D

DAWSON, Marilyn 83, 84, 85, 86
 DECANDIA, Nicole 01
 DELGADO, Paola 93

E

ENG, Cathy 89, 90, 91, 92

F

FERNANDEZ, Alana 99, 00
 FORTIER, Linda 85, 86, 87, 88
 FRANKLIN, Sylvia 88, 90
 FUKAZAWA, Ursula 87, 88, 89, 90

G

GOLDRICK, Elizabeth 85, 86, 87, 88
 GOMEZ, Monica 98
 GONZALEZ, Claudia 83, 84
 GONZALEZ, Yanet 87, 88, 89, 90
 GRADY, E. 82, 83
 GRUENEWALD, Wendy 95

H

HAMILTON, Heather 98
 HAROLD, Lynn 85
 HARTING, Hiedi 82, 83, 84
 HICKS, R. 83

I

INGRAM, S. 82, 83

J

JOSEPH, Nikiesha 98, 99, 00, 01

K

KING, Donna 91, 92, 93
 KING, S. 82
 KREHER, Lizzie 04

KULKARNI, Sita 03, 04

L

LAGAN, Tara 90
 LARA, Eliana 00, 01, 02
 LEE, Diana 82, 83, 84
 LIU, Kathy 88, 90, 91, 92
 LOAYZA, Marcie 98, 99, 00
 LOPEZ, Cindy 93, 94, 95
 LORENZETTI, Lisa 92

M

MAHECHA, Luz 03
 MARIN, Olga 87
 MARTINEZ, Dolores 01, 02, 03, 04
 MASSEY, Schrkya 03
 MAYS, Felicia 86, 87, 88, 90
 MCKENNA, A 82
 MCNAIR, Tamara 95
 MENDOZA, Charisma 99
 MENESES, Michelle 92
 MIRANDA, Becky 82, 83, 84
 MONTFERRET, Jennifer 01
 MUCHA, M 82
 MULLEN, Veronica 99

N

NAGY, K 82
 NICOLAOU, Claire 85, 86, 87
 NIETO, Diana 91, 92, 93, 95

O

OCHS, Gina 86, 87, 88, 90
 O'CONNOR, Kelly 89, 90, 91
 OPORSKA, Marta 01, 03, 04

P

PACHECO, Patricia 87, 88, 90
 PAGANO, Maria 85, 86
 PAG, Song Sun 84, 85
 PATEL, Sushreeta 95
 PICHARDO, Carmèn 94, 95
 PINCAY, Maria 95
 POLANSKJ, Odarka 83, 84, 85
 PROPSNER, J 82, 83

Q

QUINTERO, Veronica 03, 04

R

RACHER, Sonia 86
 RATYCYZ, Nadia 84
 RIOS, Tulia 88, 89, 90, 92
 RIVERA, Erica 98
 RIVERA, H. 82
 ROBINSON, Sharae 03
 ROJAS, S. 83
 RONQUILLO, R. 82, 83
 RUSIN, Kasia 04
 RYGELIS, Regina 82, 85, 86

S

SANTOS, Catherine 02
 SAMMS, Chevanese 02
 SAMPER, Jessica 04
 SANTANA, Dennise 03
 SCHNEIDER, Cindy 84, 85
 SNEED, Brandy 01

T

TAI, Bonnie 92, 93, 94
 TALOCCO, Michelle 93, 94, 95
 TANRIKULU, Kubra 04
 TOMCZAK, Anna 99
 TRUCILLO, Gina 86, 87, 88, 89

V

VARGAS, Sharon 01, 02

W

WALDBURGER, Stacy 00, 01, 02
 WASHINGTON, Lisa 86
 WILKINSON, Rebecca 04
 WINCHESTER, Melsha 98, 99
 WONG, Lleana 83, 84
 WRONA, Edyta 89, 90, 91, 92
 WYKA, Jaculine 00, 01

Z

ZACHER, Sonia 85, 87, 88

BY CAR

Garden State Parkway (GSP): Take Exit 145 to Route 280 East, then follow Route 280 East directions.

New Jersey Turnpike: Take Exit 15W to Route 280 West, then follow Route 280 West directions.

Route 280 West: After drawbridge, take Exit 14B (Broad Street/King Blvd.). At bottom of exit ramp, make a left. Go one block to stop sign. Make a left on King Blvd. Go five lights to Warren Street. Make a right on Warren Street. Go two blocks to Colden Street. Make a left on Colden Street. Follow signs to NJIT Parking Deck.

Route 280 East: Take Exit 13 (First Street/Newark). At light, make a right on First Street. Go three lights to W. Market Street. Make the soft left on W. Market Street. Go four lights to King Blvd. Make a left on King Blvd. Go one light to Warren Street. Make a left on Warren Street. Go two blocks to Colden Street. Make a left on Colden Street. Follow signs to NJIT Parking Deck.

Route 1 & 9 North & South: Take exit marked Newark, Route 21 (McCarter Highway). Cross bridge. At light at end of bridge, make quick left then quick right for Broad Street. (There are clear signs for Broad Street) Go about 1 mile. Make a left on Court Street. Make a right at third light on King Blvd. Make a left at fifth light on Warren Street. Go two blocks to Colden Street. Make a left on Colden Street. Follow signs to NJIT Parking Deck.

Route 78: Take Route 78 to the Garden State Parkway. Follow GSP directions.

Route 22: Take Route 22 to Route 21 North. Follow directions for Route 21 North.

Route 21 North: Turn left onto Raymond Boulevard. When Raymond Boulevard turns into Lock Street, turn right onto Warren Street. Turn right onto Colden Street and follow signs to NJIT parking deck.

Route 21 South: From 21 South, turn right on Bridge Street. Turn left on Broad Street. Go one block and turn right on Washington Place. Go one block and turn left on Halsey Street. Go one block and turn right on Central Avenue. Make the third left on King Blvd. At first light, turn right on Warren Street. Go two blocks to Colden Street. Make a left on Colden Street. Follow signs to NJIT Parking Deck.

New York Thruway: Thruway to Exit 14A, Garden State Parkway. Follow GSP directions above.

George Washington Bridge: NJ Turnpike South to Exit 15W. Follow Route 280 West directions above.

Lincoln Tunnel: West on Route 3 to NJ Turnpike South to Exit 15W. Follow Route 280 West directions above.

From Brooklyn, Queens & Long Island: Take Verrazano-Narrows Bridge (Interstate 278) and follow 278 across Staten Island. Cross Goethels Bridge. Follow signs to New Jersey Turnpike North then follow New Jersey Turnpike directions above.



OTHER TRANSPORTATION SYSTEMS

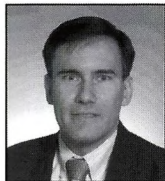
Newark International Airport: Five miles from the NJIT campus. A minibus (Newark Airtlink) or taxi service connects the airport with Penn Station in Newark. Bus, city subway, and taxi connections may be obtained at the station.

Newark Penn Station: Connections to the NJIT campus may be made by bus, city subway, or taxi.

Morris & Essex Broad Street Station: A five-block walk to the NJIT campus via King Boulevard to Central Avenue. Taxi service is also available

Newark City Subway: From Penn Station in Newark, take the Warren Street stop for the NJIT campus.

Athletics/Physical Education Staff



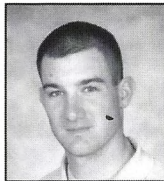
Adalberto M. Alonso
Head M/W Cross-Country
[973] 596-3636
alonso@njit.edu



Phil Baboulis
Head Women's Tennis
Head Men's Tennis
[973] 596-3636
pbtennis@optonline.net



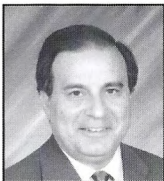
Joe Caiola
Asst. Director of Athletics/
Business & Facilities
[973] 642-7224
caiola@adm.njit.edu



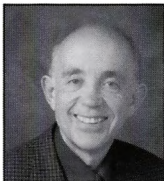
Brian Callahan
Head Baseball
[973] 596-5827
callahan@njit.edu



Tim Camp
Asst. Director of Athletics
Sports Information
[973] 596-8324



Jim Casciano
Asst. Director of Athletics/
Head Men's Basketball
[973] 596-5727
casciano@adm.njit.edu



Dr. Roy Cornely
Faculty Athletics Rep.
[973] 596-3537
cornely@adm.njit.edu



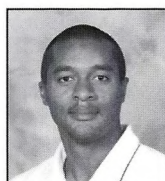
Duane Felczak
Asst. Director of Phys. Ed.
[973] 596-3637
felczak@adm.njit.edu



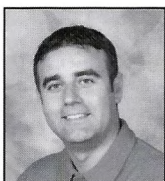
Damien Franolich
Asst. Athletic Trainer
[973] 596-3623



Lenny Kaplan
Director of Athletics
[973] 596-3636
kaplan@adm.njit.edu



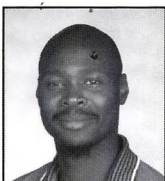
Kevin Leacock
Operations Manager
[973] 596-3636



Pedro Lopes
Head Men's Soccer
[973] 596-5219
pedro.j.lopes@njit.edu



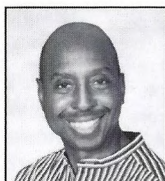
Kim Bowen Lusk
Asst. Dir. of Athletics
Head Women's Basketball
[973] 596-3633
bowen@adm.njit.edu



Ryan McNeil
Head Men's Volleyball
Interim Head Women's Volleyball
Co-Intramural Director
[973] 596-5380



Alyssa Radu
Head Women's Soccer/SWA
[973] 596-2928
radu@adm.njit.edu



Jonathan Walker
Front Desk Attendant
Equipment Specialist
[973] 596-5730



Tim Wuorinen
Asst. Director of Athletics/
Compliance & Eligibility
[973] 596-5278
wuorinen@adm.njit.edu



NJIT Alumni Athletic Hall of Fame

Name	Grad. Year	Contribution	Sport(s)	Years	Year of Induction
BAUDER, Fred "Coach"	--	Coach	M-Basketball	1932-61	1989
BAKUN, Andrew I.	1982	Athlete	M-Soccer	1978-81	2005
		Asst. Coach	M-Soccer	1990-91	
BAKUN, Myron	1967	Athlete	M-Soccer	1964-66	1991
BLUM, Raymond E.	1950	Distinguished Alum.	Speedskating/Cycling	--	1996
BORJA, Hernan "Chico"	1981	Athlete	M-Soccer	1977-80	1986
BORNAKO, Gregory "Egor"	1970	Athlete	M-Fencing	1966-70	1987
BOWSER, Hamilton V.	1952	Athlete	M-Fencing	1948-52	1989
BRADLEY, Thomas	1978	Athlete	M-Swimming	1974-78	1990
CRUZ, Edward	1963	Athlete	M-Soccer	1959-62	1995
DAWSON, Marilyn E.	1986	Athlete	WVB/WBKB/SB	1982-86	1991
DeNICOLA, Carmine P.	1978	Athlete	Baseball	1975-78	2005
DeVITO, Louis	1960	Athlete	M-Soccer/M-Fencing	1956-60	1992
DIAS, Joe A.	1977	Athlete	M-Soccer	1973-76	1993
DRURY, Eugene M.	1963	Athlete	M-Tennis	1960-63	1988
ETIENNE, Yves	1979	Athlete	M-Volleyball	1976-78	1990
FEHN, Gilbert F.	1940	Athlete	M-Basketball/M-Tennis	1936-40	1992
FITZGERALD, Joseph M.	--	Coach	M-Basketball	1961-66	1986
		Asst. Coach	M-Basketball	1952-61	
FLEISHER, Seymour "Zoom"	1951	Athlete	M-Basketball	1947-51	1992
GAGLIARDO, Salvatore A.	1985	Athlete	M-Basketball	1981-85	1995
GALLAGHER, Thomas G.	1985	Athlete	M-Basketball	1981-85	1991
GIOVANNOLI, Arnold L.	1953	Athlete	M-Basketball	1950-53	1993
GOLDRICK PITT, Elizabeth M.	1990	Athlete	WVB/SB/WBKB/WTen	1985-90	1995
GRUENEWALD, Wendy A.	1997	Athlete	WBKB/SB/WVB/WSoc	1992-96	2003
HAASE, Jay W.	1975	Athlete	M-Fencing	1971-75	1988
HAMMOND, Kenneth W.	1979	Athlete	M-Soccer	1974-77	2003
HANDWERKER, Andy	1963	Athlete	M-Soccer	1959-62	2002
HAUSSER, Paul C.	--	Administrator	--	1953-91	1990
		Coach	Fencing	1954-88	
		Coach	Baseball	1953-72	
HUBEY, Ali	1972	Athlete	M-Soccer	1968-71	1990
HURTADO, Fabian	1975	Athlete	M-Soccer	1970-73	1987
KASBARIAN, Raymond P.	1966	Founder/Athlete	Judo	1962-66	1989
KETZNER, Robert Shelby	--	Coach	Rifle	1962-86	1987
KHOWAYLO, Alex	1969	Athlete	M-Soccer	1960-63	1996
LUBETKIN, Charles "Tudy"	1953	Athlete	M-Basketball/M-Track	1949-52	1994
LYNCH, Robert K.	1984	Athlete	M-Fencing	1977-80	1993
		Coach	M-Fencing	1986-91	
MacDONALD, Dan	1984	Athlete	Baseball	1981-84	1991
OLSEN, Richard J.	1969	Athlete	M-Basketball	1965-69	1988
OLSON, George R.	1977	Athlete	Baseball	1974-77	1987
ROGERS, Warren E.	1988	Athlete	M-Basketball	1983-87	1993
ROMULUS, Rudy	1991	Athlete	M-Volleyball	1988-91	1996
SARLO, Paul A.	1992	Athlete	Baseball	1989-91	2005
SCHMID, John "Gene"	--	Coach	Baseball	1973-97	2002
		Asst. Coach	Baseball	1968-72	
SIMON, J. Malcolm	--	Coach	M-Soccer	1955-83	1994
		Athletics Director	--	1983-94	
SKURLA, Peter J.	1941	Athlete	Bowling	1937-41	1992
SWANSON, Robert F.	--	Athletics Director	--	1947-82	1986
TOSATO, Lawrence P.	1956	Athlete	M-Basketball/Baseball	1952-56	1987
TUBELLO, Jeffrey	1976	Athlete	Rifle	1972-76	1988
VAN WRIGHT	1997	Athlete	W-Basketball	1991-96	2005
WALSH, John J.	1966	Athlete	MSoc/MBKB/Baseball	1962-66	1986
WASNIEWSKI, Frank	1980	Athlete	M-Tennis	1977-80	1990
WELGOS, Bob	1962	Athlete	M-Basketball/Bowling	1959-62	2005
WOROBEC, Myron S.	1966	Athlete	M-Soccer	1962-65	1994
YONEZUKA, Yoshisada	--	Founder/Coach	Judo	1962-??	1991
ZORN, Werner	1962	Athlete	M-Soccer	1958-61	1988
1960 Men's Soccer Team		NAIA co-national champion	1988		
1981-82 Men's Basketball Team		NJIT's first ECAC and IAC champion	1990		
1982 Baseball Team		NJIT's second ECAC and IAC champion	1993		



When NJIT reclassified its athletics program to NCAA Division II from Division III in 1997, it joined the New York Collegiate Athletic Conference (NYCAC). After three years of NYCAC play, the Highlanders began a new era in the fall of 2000 as members of the Central Atlantic Collegiate Conference (CACC).

For its first two seasons in the league, NJIT was the only CACC school with full NCAA membership. The others were in a provisional period while switching affiliation from the National Association of Intercollegiate Athletics (NAIA). However, four volleyball-playing institutions completed their provisional requirements in 2002, four more did so in 2003 and 2004 saw the addi-

tion of Wilmington [Del.] College, which completed its transition and made its NCAA debut, and Felician, which sponsored its first team in the sport. This season, Philadelphia University is in the conference, expanding the CACC's ranks to 13 teams in women's volleyball.

As a conference, the CACC was voted into active status by the NCAA membership committee in July 2004. Shortly thereafter, it was awarded an automatic qualifier to the NCAA Championships in four sports, including volleyball.

The 2005 season will be the last one in the CACC for NJIT, as the Highlanders begin the four-year process of reclassifying to NCAA Division I. This season, NJIT will play a full CACC regular season conference slate and individual student-athletes will be eligible for conference honors, as well. As a result of the reclassification, NJIT will not be part of CACC postseason competition. Next season, NJIT will play a Division I schedule.

More information is available at
www.caccathletics.org.

2004 ALL-CACC TEAMS

First Team

- S Courtney McGinnis-Post, SR, *Seymour, Conn.*
- MG Julia Atkins-Wilmington, SO, *King George, Va.*
- MG Sherry Keech-Georgian Court, SR, *Glencoe, Ontario*
- OH Angie Casado-NJIT, FR, *Brick, N.J.*
- OH Emily Roth-USP, JR, *York, Pa.*
- OH Tadj Williams-Post, SO, *Albany, N.Y.*
- L Melissa Zebley-Holy Family, SR, *New Castle, Del.*

Second Team

- S Angela Estep-Wilmington, JR, *Chesapeake Beach, Md.*
- OH Norah Burdette-Goldey-Beacom, JR, *Ellicott City, MD*
- OH Jennifer Giarratano-Post, SR, *Oxford, Conn.*
- OH Lindsay Miller-Wilmington, SR, *New Castle, Del.*
- OH Juruena Silveira-Bloomfield, SO, *Brazil*
- OH Kristin Wiedeman-Wilmington, SO, *Ashland, Va.*
- L Rebecca Walczak-Georgian Court, FR, *Toms River, N.J.*

Honorable Mention

- Lauren DiSabatino, Wilmington;
- Kendra Russell, Goldey-Beacom

Player of the Year

Julia Atkins, Wilmington

Newcomer of the Year

Angie Casado, NJIT

Coach of the Year

Rich Bowers, Goldey-Beacom

Team Sportsmanship Award

Nyack

2004 CACC TOURNAMENT

November 9

#5 NJIT 3, #4 USP 1

#6 Dominican, #3 Goldey-Beacom 0

November 12

#1 Wilmington 3, #5 NJIT 0

#2 Teikyo Post 3, #6 Dominican 0

November 13

#1 Wilmington 3, #2 Teikyo Post 1

2004 CACC STANDINGS

	CACC	Overall
Wilmington	20-0	27-9
Teikyo Post	17-3	29-12
Goldey-Beacom	15-6	18-14
USP	13-7	17-16
NJIT	12-8	13-13
Holy Family	8-12	9-20
Dominican	8-12	9-22
Bloomfield	7-13	7-24
Georgian Court	6-14	8-20
Nyack	4-16	5-23
Felician	0-20	0-27

2004 LEADERS

Attack Percentage

Julia Atkins, Wilmington	.313
Tadj Williams, Teikyo Post	.291

Kills Per Game

Angie Casado, NJIT	5.55
Tadj Williams, Teikyo Post	4.42

Assists Per Game

Courtney McGinnis, Teikyo Post	10.79
Angie Estep, Wilmington	9.60

Aces Per Game

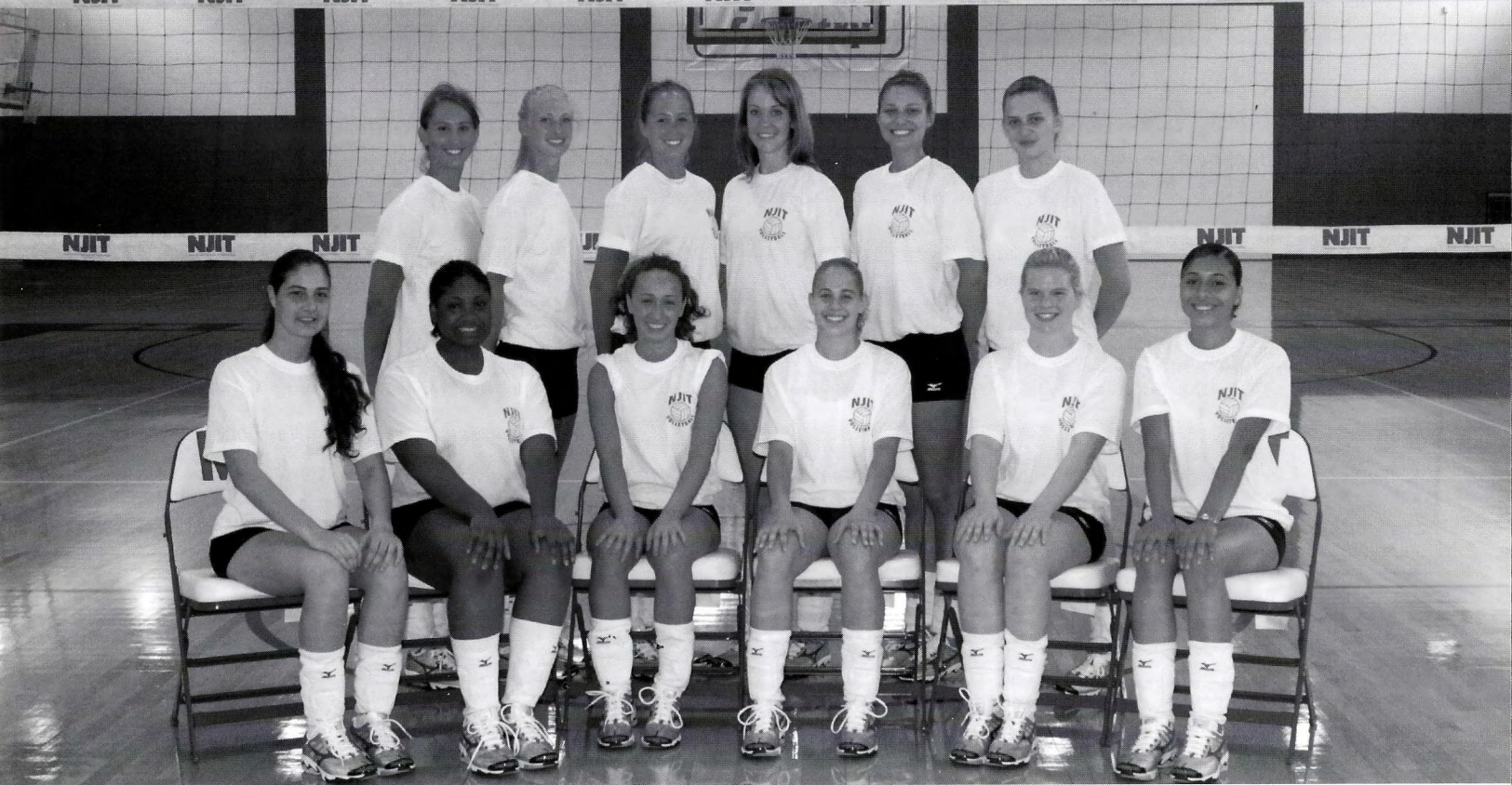
Lindsay Miller, Wilmington	.75
Heather Walker, Georgian-Court	.74

Digs Per Game

Melissa Zebley, Holy Family	5.61
Crystal Helmke, Dominican	5.00

Blocks Per Game

Sherry Keech, Georgian Court	1.31
Julia Atkins, Wilmington	1.17



The NJIT 2005 Women's Volleyball Team

Front Row - Renuska Papalexioiu, Jane Mettle, Kubra Tanrikulu, Ashley Craig, Elizabeth Kreher, Jackie Quintanilla
Back Row - Danielle Thompson, Allison Hoogerhyde, Agnieszka Pregowska, Rebecca Wilkinson, Marta Oporska, Kasia Rusin



WOMEN'S VOLLEYBALL 2005 SCHEDULE

<i>Date</i>	<i>Opponent</i>	<i>Time</i>
8/27-28	Raider Classic @ Shippensburg	
8/27	vs. Daemen	3:00PM
	vs. Slippery Rock	5:30PM
8/28	Clarion	3:00PM
	vs. Shippensburg	5:30PM
9/3	Wagner (scrimmage)	NOON
9/6	C.W. Post	7:00PM
9/10	vs. Philadelphia*	2:00PM
	vs. Felician*	4:00PM
9/17	@ USP*	NOON
	vs. Dominican (NY)*	2:00PM
9/21	HOLY FAMILY*	7:30PM
9/24	vs. Holy Family*	NOON
	@ Dominican (NY)*	2:00PM
9/27	PHILADELPHIA*	7:00PM
9/29	@ Bloomfield*	7:00PM
10/1	vs. Bloomfield*	3:00PM
	@ Wilmington (DEL)*	5:00PM
10/4	@ Post*	7:00PM
10/7	@ Georgian Court*	7:00PM
10/12	WILMINGTON (DEL)*	7:00PM
10/15	GOLDEY-BEACOM*	NOON
	GEORGIAN COURT*	4:00PM
10/18	NYACK*	7:00PM
10/22	vs. Goldey-Beacom*	3:00PM
	@ Post*	5:00PM
10/26	CONCORDIA (NY)	7:00PM
10/28	QUEENS (NY)	7:00PM
11/2	@ USP*	7:30PM
11/5	NYACK*	NOON
	FELICIAN*	4:00PM

Interim Head Coach: Ryan McNeil

Central Atlantic Collegiate Conference (*)

Home matches in (caps)

NJIT

New Jersey Institute of Technology