

Dolores Martinez
2003 Captain

2003 women's volleyball



njit facts

Location	University Heights, Newark, NJ 07102
Founded	1881 (as Newark Technical School)
Undergraduate Enrollment	5,800
Nickname	Highlanders
Colors	Scarlet and White
President	Dr. Robert A. Altenkirch
Director of Athletics	Lenny Kaplan
Athletics Department Phone	(973) 596-3636
Athletics Department FAX	(973) 596-8295
Athletics Department URL	www.njit.edu/athletics
Head Women's Volleyball Coach	Pavlina Klimova (American '00)
Career Record	first year
Record at NJIT	first year
Office Phone	(973) 596-5380
Best Time To Reach	mornings
Klimova E-Mail	njitvolleyball@hotmail.com
Captain	Dolores Martinez
First Year of Program	1982
All-Time Record	187-243 (19 yrs)
Affiliations	NCAA II, ECAC
Conference	Central Atlantic Collegiate (since 2000)
Home Arena	Entwisle Gynmasium (cap. 1,500)
2002 Record	0-18
2002 Conference Record (Finish)	0-16 (9th/9)
Starters Returning/Lost	2/4
Letterwinners Returning/Lost	2/5
Coordinator of Sports Information Services	Mark Mentone
Office Phone	(973) 596-8324
Home Phone	(973) 743-2658
E-Mail	mentone@adm.njit.edu
Women's Volleyball/Sports Information FAX	(973) 596-8440
Results Hotline	(973) 596-5555
Online Undergraduate Application	https://hex.njit.edu/undergradAppln/ugApply.jsp

Table of Contents

Quick Facts	IFC
Season Outlook	2
Roster	2
President Robert A. Altenkirch	3
Vice-President for Academic and Student Services Joel Bloom	3
Director of Athletics Lenny Kaplan	3
Head Coach Pavlina Klimova	4
2002 Statistics/Results	5
Returning Player Profiles	6
Newcomers	7
About NJIT	8
About Newark, N.J.	10
Athletics Facilities	11
Program History	12
Directions to NJIT	14
NJIT Alumni Athletic Hall of Fame	15
Central Atlantic Collegiate Conference	16
Athletics Department Directory	IBC
Schedule	OBC

MEDIA INFORMATION

This guide is designed to assist the media in their coverage of New Jersey Institute of Technology women's volleyball. The NJIT sports information services department will provide an official NCAA box score 15 minutes after the conclusion of each home match.

All interview requests should be made through the sports information office, 973-596-8324. Following matches, coach Klimova and selected players will be available on the court following a 10-minute cooling-off period. All visiting radio broadcast requests should be made at least two weeks in advance.

CREDITS

The 2003 NJIT Women's Volleyball Guide is a production of the NJIT sports information services department in cooperation with the Office of University Communications. Writing and design by Mark Mentone on Adobe PageMaker 7.0. Editorial assistance by Tim Wuorinen and Pavlina Klimova. Except where indicated, photography by PM Studios, Edison, N.J. Printing by Prestige Graphics, Union, N.J.

2003 Outlook/Roster

Pavlina Klimova knew the situation she inherited when she accepted the position of head women's volleyball coach at New Jersey Institute of Technology. And even though her pre-season roster contains just seven players, only two of which are returnees, Klimova expects the youthful Highlanders to inherit her positive attitude.

"This team works hard, and I have enjoyed working with them," said Klimova, a graduate assistant at Wagner College for the last two seasons. "Our goal is simply to keep improving from day to day. We want to play well as a team, and to execute the things we practice during the matches."

Whether that improvement provides the Highlanders with their first victory since 1999 remains to be seen. Klimova is encouraging the Highlanders to aim even higher.

"The top six teams out of 10 make the conference tournament," she said. "That gives our players something to shoot for."

SETTERS: Newcomer **Veronica Quintero** will start at setter. Team cap-

tain **Dolores Martinez** (54 GP, 22 kills, 40 digs, 10 aces in 2002) is making a transition from the outside to become the right-side hitter.

OUTSIDES: Six-foot sophomore **Marta Oporska**, the 2001 team MVP who is coming off a medical redshirt season, has been the Highlanders' strongest hitter in the preseason. Therefore, Klimova has moved her outside from her former middle blocker position, and will also count on her to pass. Junior **Sharaé Robinson**, also a member of the women's basketball team, is playing volleyball for the first time since high school. Newcomers **Marelis Bernal** and **Natalie Rojas** provide depth.

MIDDLES: NJIT hopes to receive a boost from the athleticism of fifth-year senior **SchrKya Massey**, a first-time volleyball player who has been the women's basketball MVP for the Highlanders each of the last two seasons. "Kya has improved significantly in pre-season workouts and I expect her to continue this trend," Klimova said.

Also starting in the middle is newcomer **Dennise Santana**.

2003 Roster

No.	Name	Yr.	Pos.	Ht.	Hometown/High School
2	Dennise Santana	So.	MB	5-4	Guttenberg, NJ/High Tech
3	Dolores Martinez	Jr.	Opp/S	5-5	Parlin, NJ/Old Bridge
4	Marta Oporska	So.	OH/MB	6-0	Clifton, NJ/Clifton
5	Veronica Quintero	So.	S	5-4	Paterson, NJ/Manchester Regional
7	Natalie Rojas	So.	L/OH	4-11	Paterson, NJ/PCTI
9	SchrKya Massey	Sr.	MB	5-6	South Orange, NJ/Columbia
11	Sharaé Robinson	Jr.	OH	5-8	Jersey City, NJ/McNair Academic
12	Marelis Bernal	Jr.	OH	5-6	Newark, NJ/Orange
16	Luz Mahecha	So.			Brick, NJ/Brick Twp. Mem.

Head Coach: Pavlina Klimova (American '00), 1st year

Captain: Dolores Martinez

DR. ROBERT A. ALTENKIRCH

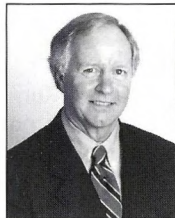
President

Dr. Robert A. Altenkirch was selected the seventh president of NJIT in May 2002.

Altenkirch, a mechanical engineer, was most recently the vice president for research at Mississippi State University (MSU). He brings to NJIT a wide background in university research, teaching and administration, with extensive experience in program development, fundraising and federal relations. He has served the University of Kentucky as professor and chair of mechanical engineering, MSU as professor and dean of the College of Engineering, and Washington State University as professor and dean of the College of Engineering and Architecture.

Altenkirch was once a prominent soccer official. He was the referee for the 1987 NIAA women's national championship game, and also worked the middle for five consecutive Kentucky state high school championships.

Altenkirch holds a Ph.D. from Purdue University, a M.S. from the University of California-Berkeley, and a B.S.M.E. from Purdue. A native of St. Louis, Missouri, he is a member of several professional societies and a reviewer for numerous professional journals.



DR. JOEL BLOOM

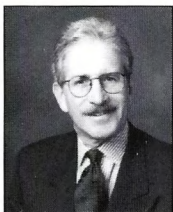
Vice President for Academic and Student Services

Dr. Joel Bloom has worked at NJIT since July 1990. In his current position, he is responsible for nine divisions of the University, including Physical Education and Athletics.

Dr. Bloom is also Dean of the Albert Dorman Honors College, which enrolls more than 525 students who are typically in the top 10 percent of their high school graduating class.

Prior to NJIT, Dr. Bloom spent seven years as Assistant Commissioner in the New Jersey Department of Education. He is currently the Chair of the NASULGC Council of Chief Student Affairs Officers and the Newark Consortium Board for Pre-College Education.

Dr. Bloom earned his Bachelor's and Master's degrees from Hunter College, and holds a Master's and Doctorate from Columbia University Teachers College.



LENNY KAPLAN

Director of Athletics

After serving 11 years in the athletics department at Division-I Manhattan College, Lenny Kaplan was appointed in August 2000 to NJIT's newly-created position of senior administrator for athletics, physical education, recreation and intramurals. He assumed the duties of director of athletics shortly thereafter.

Kaplan is a 1988 graduate of St. John's University with a degree in athletics administration. After three years as Manhattan's director of operations, he served as an assistant athletics director from 1991-2000. He is a member of the NCAA Division II nomination committee, the D-II Women's Soccer Regional Advisory Committee, and the Eastern Intercollegiate Volleyball Association Executive Committee.

Kaplan resides in Merrick, New York, with his wife, Nancy, and their sons, Michael and Joshua.



Coaching Staff

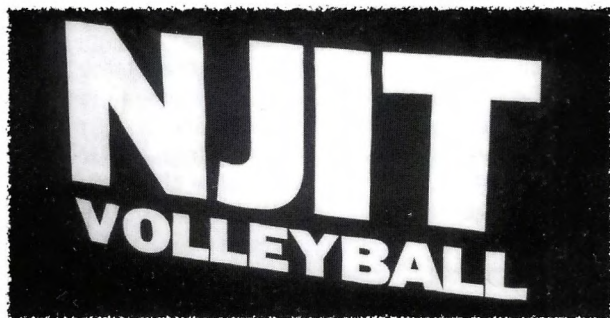
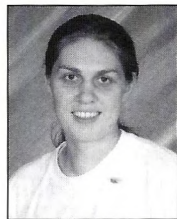
PAVLINA KLIMOVA

Head Coach

Pavlina Klimova, a native of the Czech Republic, is the first full-time women's volleyball coach at NJIT in 12 years. She is beginning her first collegiate head coaching position.

"I look forward to the opportunity to rebuild the NJIT program," Klimova said. "It is an exciting challenge for me"

Klimova was a four-year starter and four-time Colonial Athletic Association (CAA) Scholar-Athlete as an undergraduate at American University in Washington, D.C. She played on two CAA championship teams, and as a senior captain in



1999, was chosen for the all-CAA Tournament team. A former member of the Czech junior national team, she played on two national championship squads with the club team KP Brno.

Klimova spent the last two seasons

as a graduate assistant coach at Division-I Wagner College. She earned a bachelor of science degree in business administration/international economics from American in 2000 and a master's of business administration in marketing from Wagner in 2003.

NJIT Head Coaches' Career Records

<i>Coach</i>	<i>Years</i>	<i>(No.)</i>	<i>W</i>	<i>L</i>	<i>Pct.</i>
Oleg Moiseenko	1982	(1)	1	11	.083
Dave DeNure	1983-91	(9)	150	93	.617
Kerry Keith	1992	(1)	11	13	.458
Bob Fordi	1993-95	(3)	24	53	.312
Jon Bednasz	1998-99	(2)	1	27	.036
Manny Del Rio	2000	(1)	0	16	.000
Anthony Valbrun	2001-02	(2)	0	38	.000
Total	19 yrs.		187	243	.435

2002 Statistics & Results

Overall record: 0-18 Conf: 0-16 Home: 0-8 Away: 0-7 Neutral: 0-3

##	Name	GP	MP-MS	ATTACK					SET		SERVE		
				K	K/Game	E	TA	Pct	A	A/Game	SA	SA/Gm	SE
1	WALDBURGER, Stacy	54	18-18	7	0.13	38	99	-.313	1	0.02	12	0.22	33
2	BERROA, Beverly	50	18-16	16	0.32	43	99	-.273	12	0.24	5	0.10	23
3	MARTINEZ, Dolores	54	18-18	22	0.41	61	142	-.275	2	0.04	10	0.19	23
5	LARA, Eliana	46	16-8	11	0.24	37	91	-.286	11	0.24	7	0.15	14
6	SANTOS, Catherine	45	15-15	9	0.20	29	82	-.244	91	2.02	6	0.13	22
7	UARGAS, Sharon	20	8-4	3	0.15	13	25	-.400	3	0.15	8	0.40	9
9	APPLEBY, Emma	46	16-15	18	0.39	59	161	-.255	2	0.04	0	0.00	27
15	SAMMS, Chevanese	50	18-14	62	1.24	72	243	-.041	0	0.00	9	0.18	16
	NJIT.....	54	18-18	148	2.74	352	942	-.217	122	2.26	57	1.06	167

##	Name	G	RE	DIG			BLOCKING			BHE	
				DIG	Dig/G	BS	BA	Total	B/Game		BE
1	WALDBURGER, Stacy	54	157	32	0.59	0	0	0	0.00	0	1
2	BERROA, Beverly	50	101	27	0.54	0	0	0	0.00	1	6
3	MARTINEZ, Dolores	54	84	40	0.74	0	0	0	0.00	0	2
5	LARA, Eliana	46	56	27	0.59	4	0	4	0.09	3	5
6	SANTOS, Catherine	45	6	31	0.69	0	0	0	0.00	1	5
7	UARGAS, Sharon	20	17	11	0.55	0	0	0	0.00	0	1
9	APPLEBY, Emma	46	20	12	0.26	2	0	2	0.04	5	3
15	SAMMS, Chevanese	50	13	22	0.44	26	0	26	0.52	32	2
	TEAM		29								
	NJIT.....	54	483	202	3.74	32	0	32.0	0.59	42	25

Date	Opponent	Score	Score-by-game	Overall	Conf	Time	Att
* Sep 10, 2002	GEORGIAN COURT	0-3 L	12-30,24-30,28-30	0-1	0-1	1:15	50
* Sep 14, 2002	at Bloomfield	0-3 L	8-30,10-30,17-30	0-2	0-2	0:56	25
* Sep 14, 2002	us USP	0-3 L	16-30,9-30,9-30	0-3	0-3	0:51	25
* Sep 17, 2002	at Dominican (NY)	0-3 L	12-30,11-30,9-30	0-4	0-4		
* Sep 21, 2002	USP	0-3 L	12-30,9-30,14-30	0-5	0-5	0:56	15
* Sep 21, 2002	NYACK	0-3 L	11-30,18-30,16-30	0-6	0-6	1:04	35
* Sep 24, 2002	TEIKYO POST	0-3 L	8-30,8-30,11-30	0-7	0-7	0:55	20
* Sep 26, 2002	at Nyack	0-3 L	11-30,6-30,15-30	0-8	0-8		
* Sep 28, 2002	at Goldey-Beacom	0-3 L	10-30,7-30,4-30	0-9	0-9		
* Oct 03, 2002	DOMINICAN (NY)	0-3 L	15-30,7-30,16-30	0-10	0-10	1:03	40
* Oct 05, 2002	at Teikyo Post	0-3 L	11-30,13-30,9-30	0-11	0-11	1:01	40
* Oct 05, 2002	us Wilmington (DE)	0-3 L	7-30,11-30,11-30	0-12	0-12	0:57	25
* Oct 10, 2002	GOLDEY-BEACOM	0-3 L	4-30,17-30,4-30	0-13	0-13	1:01	15
* Oct 12, 2002	WILMINGTON (DE)	0-3 L	5-30,4-30,8-30	0-14	0-14	0:46	25
* Oct 17, 2002	at Georgian Court	0-3 L	17-30,22-30,16-30	0-15	0-15		
Oct 19, 2002	us Merrimack	0-3 L	17-30,20-30,12-30	0-16	0-15		
Oct 19, 2002	at Adelphi	0-3 L	14-30,5-30,19-30	0-17	0-15		
* Oct 22, 2002	BLOOMFIELD	0-3 L	7-30,6-30,15-30	0-18	0-16	0:47	50

* CACC

www.njit.edu/athletics

Returning Player Profiles

3

DOLORES MARTINEZ Jr. S 5-5

Parlin, N.J./Old Bridge HS



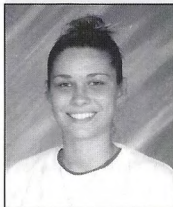
Dolores Isabel Martinez... shifts from the outside to dual setter/opposite role. **2002:** One of just two Highlanders to start every match and play all 54 games... led team with 40 digs. **2001:** Appeared in 24 games with five kills, 13 digs and five aces. **Prior to NJIT:** Attended Old Bridge High.

Personal: Daughter of Susana Bastos.... majoring in architecture... played soccer for NJIT as a true freshman in 2000... two-time letterwinner in tennis for the Highlanders... born 11/27/81 in Tegucigalpa, Honduras.

4

MARTA OPORSKA So. OH/MB 6-0

Clifton, N.J./Clifton HS

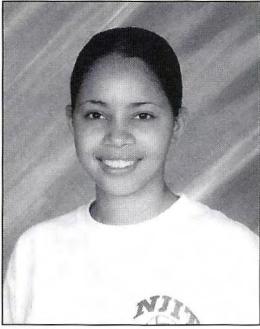


Marta Oporska... team's tallest player hopes to contribute after a year off. **2002:** Medical redshirt season. **2001:** Team MVP... led the Highlanders in kills (74), blocks (16) and aces (10). **Prior to NJIT:** Was all-county in track at Clifton High... also participated in swimming.

Personal: Daughter of Malgorzata Oporska... business management major... born 8/20/83 in Warsaw, Poland.



Newcomers



2 Dennise Santana
Guttenberg, N.J.



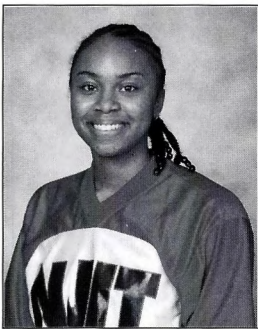
5 Veronica Quintero
Paterson, N.J.



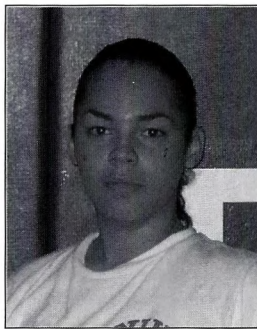
7 Natalie Rojas
Paterson, N.J.



9 SchrKya Massey
South Orange, N.J.



11 Sharaé Robinson
Jersey City, N.J.



12 Marelis Bernal
Newark, N.J.



16 Luz Mahecha
Brick, N.J.

About NJIT

NJIT's history spans from the Industrial Revolution to the Information Age. Newark was a factory town when the tuition-free evening school was founded in 1881 to support local industries. From the early days, science and technology have been the engines fueling the university's development.

Over time, the university both anticipated and responded to change by expanding its curriculum and mission. Most notably, in 1919, the university established baccalaureate programs in three engineering fields. By 1975, NJIT offered a broad range of undergraduate and graduate degrees. All programs included significant research and public service components with the goal of providing an academic environment that fostered intellectual depth and breadth, as well as social responsibility.

Today, continuing a **fourfold mission of instruction, research, economic development and public service**, NJIT is among the leading comprehensive technological universities in the nation. The university offers 100 degree programs in 27 undergraduate majors and 30 graduate specialties. It has state-of-the-art facilities on a 45-acre campus in Newark and a solar observatory in Big Bear, California.

NJIT's Six Colleges

While there has been tremendous growth and diversification at NJIT, its roots are in engineering education. For more than eight decades, **Newark College of Engineering (NCE)** has been preparing engineering students to use science, mathematics, technology and problem-solving skills to design, construct, test and maintain products, services, and information systems.

The **New Jersey School of Architecture**, established in 1973, is one of the largest architecture schools in the nation and is nationally recognized for the innovative integration of computer

technology into the design curriculum.

The **College of Science and Liberal Arts (CSLA)**, established in 1982, is moving into the forefront of many national research activities from solar astronomy to computational and mathematical modeling. CSLA provides students with the skill sets for the professional marketplace including literacy in the computer, mathematical, physical and biological sciences, as well as the traditional liberal arts disciplines.

The **School of Management**, established in 1988, combines the best of the traditional business disciplines (e.g., finance, marketing, accounting, e-commerce) with the power of information and technology management to develop professionals who can manage and communicate effectively.

The **Albert Dorman Honors College**, established in 1993, offers one of the nation's leading technologically oriented honors programs for students who are prepared to undertake a rigorous and individualized course of study.

The **College of Computing Sciences**, established in 2001, encompasses a department of computer science, focused on both the theoretical areas of computing and the development of new computer technology, as well as a department of information systems, concentrated on applications involving people and organizations.

NJIT: New Jersey's Technological Research University

NJIT plays a critical role in shaping New Jersey's future. As a major public technological university, NJIT is an important conduit through which technology flows into society. The university's educational programs prepare students to be leaders in the technology-dependent economy of the 21st century. University researchers seek new knowledge to improve processes

and products for industry. Through public and private partnerships and economic development efforts, the university hopes to grow new business ventures that fuel the economy.

In addition to its degree programs, the university offers a full spectrum of resources in technological specialties including:

- enrichment programs for professionals through the Division of Continuing Professional Education
- programs designed to attract elementary and high school students through careers in technology.
- extensive eLearning courses.
- selected courses available at locations throughout New Jersey.

A strong applied research program is the very core of the technological research university, generating the advances that fuel a knowledge-based economy. NJIT's research programs have grown exponentially over the past 25 years, from a total expenditure of \$500,000 in 1978 to more than \$50 million today. The university conducts cutting-edge applied research through

multidisciplinary centers of excellence, specialized high-tech labs, and partnerships with industry to develop commercially promising new technologies.

NJIT is committed to economic development for Newark, New Jersey, and the region. The university operates several outreach centers that provide direct technical assistance to the state's businesses with the goal of helping small and medium-sized companies become more productive, profitable, and globally competitive.

NJIT is also the home of New Jersey's oldest and largest incubator facility, and was one of the first institutions in the nation to adopt economic development as a fourth mission element. The university's research centers work in collaboration with corporate partners to speed technology transfer, and numerous outreach programs help businesses become more productive. Extensive initiatives in transportation research based at the university focus on the infrastructure New Jersey needs for a thriving economy.

U.S. News: NJIT A "Top School"

NJIT is again among the top-ranked universities in the nation in U.S. News and World Report's annual "Best Colleges" issue. NJIT's rankings place the university among the leaders in education, research, diversity, and cost-effectiveness.

Overall, NJIT ranked No. 117 of 248 national universities offering a full range of undergraduate majors, plus master's and doctoral degrees. There are nearly 600 such universities, but not all are selected to be ranked. Among the 89 public universities in the rated group, NJIT ranked 59th.

The magazine uses expert opinion about program quality and statistical data that it says are reliable indicators of the quality of a school's research, faculty and students. Among the criteria used to score schools are the rate of students who graduate, class size, the student/faculty ratio, and the class ranks and test scores of entering freshmen. The current study is based on interviews and data collected in 2002.

NJIT's ranking ties it with Howard University, SUNY-Stony Brook, the University of Oklahoma, and the University of San Francisco.

In a separate study, NJIT's engineering school's undergraduate program was rated 84th out of 115 ranked engineering schools.

More information is available at http://www.usnews.com/usnews/edu/college/rankings/rankindex_brief.php.

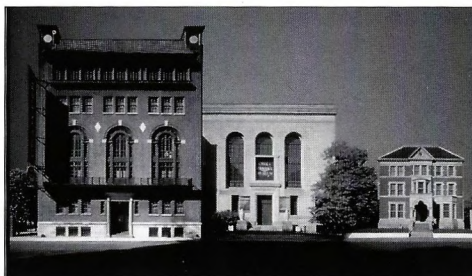
About Newark

Newark: The Renaissance City

NJIT is located in the heart of New Jersey's largest city. A major urban center, Newark is a city on the move. Some 30,000 undergraduate, graduate and professional students attend classes in University Heights at the city's four public institutions of higher learning: NJIT, Rutgers-Newark, the University of Medicine and Dentistry of New Jersey, and Essex County College.

Attractions in Newark's revitalized downtown include:

- The Newark Museum
- New Jersey Performing Arts Center
- The Newark Public Library
- Symphony Hall
- Branch Brook Park
- Art galleries, restaurants, and shopping
- An urban architectural laboratory
- Professional minor league baseball (Newark Bears)



COURTESY NEWARK MUSEUM
The Newark Museum on Washington Street.

Newark: New Jersey's College Town

Adjacent to NJIT is the Newark campus of Rutgers University.

NJIT and Rutgers enjoy an exceptionally close and productive consortial relationship within the thriving University Heights section of Newark. NJIT and Rutgers students have library privileges at both campuses. NJIT students may also enrich their educational experience by enrolling in Rutgers-Newark courses and in full degree programs in disciplines not offered at NJIT, such as art, music, geology and psychology.

Each year the two universities co-sponsor a common season of theatrical productions, as well as "World Week," a joint program of honors colloquia, and a variety of other cultural and social activities.

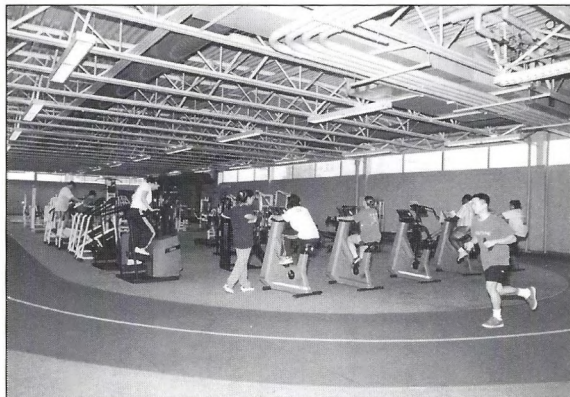
New Jersey/New York Metropolitan Region

The NJIT campus is in one of the nation's most exciting cultural and business regions. Advantages include:

- Minutes from New Jersey Performing Arts Center, Liberty Science Center, Meadowlands Sports Complex, Manhattan and all of its attractions, Newport Center Mall, and Secaucus Outlet Center.
- Discount tickets for Broadway shows, museums, concerts, and sporting events.
- Weekend trips throughout the Northeastern United States: skiing, boating, swimming, hiking, and much more.
- The spectacular Jersey shore is less than one hour away.

Athletics Facilities

The NJIT soccer teams play their home games at **Lubetkin Field**, a lighted, natural-grass campus facility adjacent to the **Estelle and Zoom Fleisher Athletic Center**.

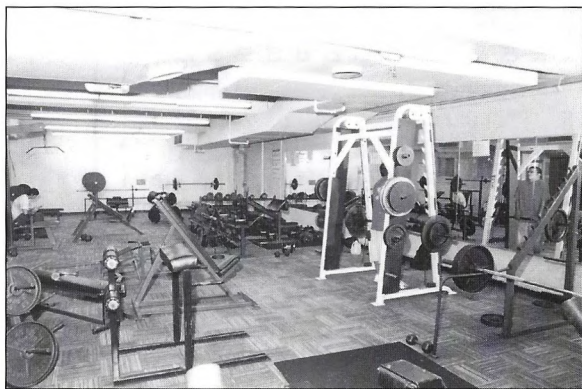


The Fleisher fitness center features computer-controlled biking equipment, Cybex resistance units, and an indoor track.

The main facility in the Fleisher Center. Entwisle seats approximately 1,500 spectators. The back bay, "C gym," area can be sectioned off from the main floor, making the entire gymnasium useful for intramural events, physical education classes, and campus recreation time, and able to host multiple events simultaneously.

The women's soccer team also has access to all of the other facilities in the athletic center. These include the fitness area (containing computer-controlled biking equipment, Cybex resistance units, and an indoor track), a free-weight room and a hammer-strength weight room, four racquetball courts (which can be converted for squash), a martial arts center, and an aerobics/dance studio. A six-lane swimming pool is home to NJIT's men's and women's swimming teams, while the two varsity tennis squads utilize the four lighted outdoor hardcourt tennis courts behind the building.

The Hazell Student Center houses six regulation bowling lanes.



NJIT's hammer-strength weight room, in the basement of the Fleisher Athletic Center.

Lubetkin, which is also home to the Highlanders' baseball team, contains a scoreboard and pressbox facilities, and has seating to hold approximately 1,000 spectators. The field is also used for physical education and intramurals.

The NJIT men's and women's basketball and volleyball teams play their home games in **Entwisle Gymnasium**,

Year	Record	WIAC	IAC	Jersey 9	NYCAC	CACC	Postseason	Head Coach	Captains	MVP
1982	1-11	—	—	—	—	—	—	Oleg Moiseenko	Heidi Hartung, Becky Miranda	
1983	6-15	—	—	—	—	—	—	Dave DeNure	Heidi Hartung, Becky Miranda	Sharon Ingram
1984	10-5	2 nd	—	—	—	—	—	Dave DeNure	Heidi Hartung, Becky Miranda	Becky Miranda
1985	14-6	1 st	2 nd	—	—	—	—	Dave DeNure	Eileen Begasse, Marilyn Dawson	Marilyn Dawson
1986	24-8	1 st	1 st	—	—	—	—	Dave DeNure	Marilyn Dawson	Clairie Nicolaou
1987	22-8	2 nd	2 nd	—	—	—	ECAC semis	Dave DeNure		Clairie Nicolaou
1988	26-6	1 st	1 st	—	—	—	ECAC semis	Dave DeNure	Liz Goldrick, Felicia Mays	Liz Goldrick
1989	15-17	2 nd	2 nd	—	—	—	—	Dave DeNure	Denise Corsaro	Denise Corsaro
1990	23-12	2 nd	2 nd	1 st	—	—	—	Dave DeNure	Kathy Eng	Kathy Eng
1991	10-16	—	—	—	—	—	—	Dave DeNure		Kathy Eng
1992	11-13	2 nd	2 nd	4 th	—	—	—	Kerry Keith	Kathy Eng	Kathy Eng
1993	7-20	—	3 rd	—	—	—	—	Bob Fordi	Diana Nieto, Bonnie Tai	Donna King
1994	9-14	3 rd	2 nd	—	—	—	—	Bob Fordi	Lenny Jiminez, Bonnie Tai	Lenny Jiminez
1995	8-19	—	—	—	—	—	—	Bob Fordi	Sandra Caceras	Lenny Jiminez
1996	no team	-----	-----	-----	-----	-----	-----	-----	-----	-----
1997	no team	-----	-----	-----	-----	-----	-----	-----	-----	-----
1998	0-10	—	—	—	12 th	—	—	Jon Bednasz		Melsha Winchester
1999	1-17	—	—	—	12 th	—	—	Jon Bednasz		Melsha Winchester
2000	0-16	—	—	—	—	8 th	—	Manny Del Rio	Nikiesha Joseph	Carisa Butensky
2001	0-20	—	—	—	—	8 th	—	Anthony Valbrun	Nikeisha Joseph	Marta Oporska
2002	0-18	—	—	—	—	9 th	—	Anthony Valbrun	Eliana Lara, Stacy Waldburger	Chevanese Samms

Note: All blank information is missing. Anyone with documentable proof of missing information, or corrections to the above, is asked to contact the sports information office at (973) 596-8324 or mentone@adm.njit.edu.

Postseason

Appearances

ECAC D-III Metro

1987, 1988

Conference Championships

WIAC

1985, 1986, 1988

IAC

1986, 1988

Conference

Player of the Year

IAC

1988 - Sonia Zacher

GTE Regional

Academic

All-America

1988 - Sonia Zacher

All-WIAC

1984

Eileen Begasse

Marilyn Dawson

Heidi Harting

1985

Eileen Begasse

Marilyn Dawson

Liz Goldrick

1986

Marilyn Dawson

Clairie Nicolaou

1987

Clairie Nicolaou

1988

Denise Corsaro

Liz Goldrick

Gina Ochs (2nd)

Sonia Zacher

1989

Denise Corsaro

Kathy Eng (2nd)

Ursula Fukazawa (2nd)

Yanet Gonzalez

1990

Kathy Eng

Yanet Gonzalez

Gina Ochs

Joanie Pratt

1991

Kathy Eng

Connie Krzeminski

(HM)

1992

Kathy Eng

1995

Wendy Gruenewald

(HM)

Lenny Jiminez

All-IAC

1986

Denise Corsaro

Marilyn Dawson

Liz Goldrick (2nd)

Clairie Nicolau

Regina Rygelis (2nd)

1987

Liz Goldrick

Clairie Nicolaou

Gina Ochs (2nd)

Sonia Zacher (2nd)

1988

Denise Corsaro

Liz Goldrick

Yanet Gonzales (2nd)

Gina Ochs

Sonia Zacher

1989

Denise Corsaro

Kathy Eng (2nd)

Ursula Fukazawa (2nd)

Yanet Gonzalez

1990

Kathy Eng

Ursula Fukazawa

Yanet Gonzalez

Gina Ochs

Joanie Pratt

1991

Kathy Eng

Connie Krzeminski

Kathy Liu (HM)

1992

Kathy Eng

Kathy Liu (2nd)

Tulia Rios (2nd)

Edyta Wrona

1993

Donna King (2nd)

1995

Wendy Gruenewald

(2nd)

Lenny Jiminez (2nd)

National Statistical Leaders

NCAA Division III

1989

Yanet Gonzalez - services aces per game

1991

Kathy Eng - services aces per game

All-Jersey 9

1990

Kathy Eng

1991

Kathy Eng

Connie Krzeminski

1992

Kathy Eng

1993

Donna King

Clara Ponton

Directions to NJIT

Garden State Parkway (GSP): Take exit 145 to Route 280 East, then follow Route 280 East directions.

New Jersey Turnpike: Take exit 15W to Route 280 West, then follow Route 280 West directions.

Route 280 West: After drawbridge, take Exit 14B (Broad Street/King Blvd.). At bottom of exit ramp, make a left. Go one block to stop sign. Make a left on King Blvd. Go five lights to Warren Street. Make a right on Warren Street. Go two blocks to Colden Street. Make a left on Colden Street. Follow signs to NJIT Parking Deck.

Route 280 East: Take Exit 13 (First Street/Newark). At light, make a right on First Street. Go three lights to W. Market Street. Make the soft left on W. Market Street. Go four lights to King Blvd. Make a left on King Blvd. Go one light to Warren Street. Make a left on Warren Street. Go two blocks to Colden Street. Make a left on Colden Street. Follow signs to NJIT Parking Deck.

Route 1 & 9 North & South: Take exit marked Newark, Route 21 (McCarter Highway). Cross bridge. At light at end of bridge, make quick left then quick right for Broad Street. (There are clear signs for Broad Street) Go about 1 mile. Make a left on Court Street. Make a right at third light on King Blvd. Make a left at fifth light on Warren Street. Go two blocks to Colden Street. Make a left on Colden Street. Follow signs to NJIT Parking Deck.

Route 78: Take Route 78 to the Garden State Parkway. Follow GSP directions.

Route 22: Take Route 22 to Route 21 North. Follow directions for Route 21 North.

Route 21 North: From 21 North, turn left onto Raymond Boulevard. When Raymond Boulevard turns into Lock Street, turn right onto Warren

Street. Turn right onto Colden Street and follow signs to NJIT parking deck.

Route 21 South: From 21 South, turn right on Bridge Street. Turn left on Broad Street. Go one block and turn right on Washington Place. Go one block and turn left on Halsey Street. Go one block and turn right on Central Avenue. Make the third left on King Blvd. At first light, turn right on Warren Street. Go two blocks to Colden Street. Make a left on Colden Street. Follow signs to NJIT Parking Deck.

New York Thruway: Thruway to Exit 14A, Garden State Parkway. Follow GSP directions above.

George Washington Bridge: NJ Turnpike South to Exit 15W. Follow Route 280 West directions above.

Lincoln Tunnel: West on Route 3 to NJ Turnpike South to Exit 15W. Follow Route 280 West directions above.

From Brooklyn, Queens and Long Island: Take Verrazano-Narrows Bridge (Interstate 278) and follow 278 across Staten Island. Cross Goethels Bridge. Follow signs to New Jersey Turnpike North then follow New Jersey Turnpike directions above.



www.njit.edu/athletics

NJIT Alumni Athletic Hall of Fame

<i>Name</i>	<i>Grad. Year</i>	<i>Contribution</i>	<i>Sport(s)</i>	<i>Years</i>	<i>Year of Induction</i>
BAUDER, Fred "Coach"	—	Coach	M-Basketball	1932-61	1989
BAKUN, Myron	1967	Athlete	M-Soccer	1964-66	1991
BLUM, Raymond E.	1950	Disting. Alum.	Speedskating/Cycling	—	1996
BORJA, Hernan "Chico"	1981	Athlete	M-Soccer	1977-80	1986
BORNAKO, Gregory "Egor"	1970	Athlete	M-Fencing	1966-70	1987
BOWSER, Hamilton V.	1952	Athlete	M-Fencing	1948-52	1989
BRADLEY, Thomas	1978	Athlete	M-Swimming	1974-78	1990
CRUZ, Edward	1963	Athlete	M-Soccer	1959-62	1995
DAWSON, Marilyn E.	1986	Athlete	WVB/WBKB/SB	1982-86	1991
DeVITO, Louis	1960	Athlete	M-Soccer/M-Fencing	1956-60	1992
DIAS, Joe A.	1977	Athlete	M-Soccer	1973-76	1993
DRURY, Eugene M.	1963	Athlete	M-Tennis	1960-63	1988
ETIENNE, Yves	1979	Athlete	M-Volleyball	1976-78	1990
FEHN, Gilbert F.	1940	Athlete	M-Basketball/M-Tennis	1936-40	1992
FITZGERALD, Joseph M.	—	Coach Asst. Coach	M-Basketball M-Basketball	1961-66 1952-61	1986
FLEISHER, Seymour "Zoom"	1951	Athlete	M-Basketball	1947-51	1992
GAGLIARDO, Salvatore A.	1985	Athlete	M-Basketball	1981-85	1995
GALLAGHER, Thomas G.	1985	Athlete	M-Basketball	1981-85	1991
GIOVANNOLI, Arnold L.	1953	Athlete	M-Basketball	1950-53	1993
GOLDRICK PITT, Elizabeth M.	1990	Athlete	WVB/SB/WBKB/WTen	1985-90	1995
HAASE, Jay W.	1975	Athlete	M-Fencing	1971-75	1988
HANDWERKER, Andy	1963	Athlete	M-Soccer	1959-62	2002
HAUSSER, Paul C.	—	Administrator Coach	— Fencing	1953-91 1954-88	1990
HUBEY, Ali	1972	Athlete	M-Soccer	1968-71	1990
HURTADO, Fabian	1975	Athlete	M-Soccer	1970-73	1987
KASBARIAN, Raymond P.	1966	Founder/Athlete	Judo	1962-66	1989
KETZNER, Robert Shelby	—	Coach	Rifle	1962-86	1987
KHOWAYLO, Alex	1969	Athlete	M-Soccer	1960-63	1996
LUBETKIN, Charles "Tudy"	1953	Athlete	M-Basketball/M-Track	1949-52	1994
LYNCH, Robert K.	1984	Athlete Coach	M-Fencing M-Fencing	1977-80 1986-91	1993
McDONALD, Dan	1984	Athlete	Baseball	1981-84	1991
OLSEN, Richard J.	1969	Athlete	M-Basketball	1965-69	1988
OLSON, George R.	1977	Athlete	Baseball	1974-77	1987
ROGERS, Warren E.	1988	Athlete	M-Basketball	1983-87	1993
ROMULUS, Rudy	1991	Athlete	M-Volleyball	1988-91	1996
SCHMID, John "Gene"	—	Coach Asst. Coach	Baseball Baseball	1973-97 1968-72	2002
SIMON, J. Malcolm	—	Coach Athletics Director	M-Soccer —	1955-83 1983-94	1994
SKURLA, Peter J.	1941	Athlete	Bowling	1937-41	1992
SWANSON, Robert F.	—	Athletics Director	—	1947-82	1986
TOSTATO, Lawrence P.	1956	Athlete	M-Basketball/Baseball	1952-56	1987
TUBELLO, Jeffrey	1976	Athlete	Rifle	1972-76	1988
WALSH, John J.	1966	Athlete	MSoc/MBKB/Baseball	1962-66	1986
WASNIEWSKI, Frank	1980	Athlete	M-Tennis	1977-80	1990
WOROBEC, Myron S.	1966	Athlete	M-Soccer	1962-65	1994
YONEZUKA, Yoshisada	—	Founder/Coach	Judo	1962-??	1991
ZORN, Werner	1962	Athlete	M-Soccer	1958-61	1988

Central Atlantic Collegiate Conference

When NJIT reclassified its athletics programs to NCAA Division II from Division III in 1997, it joined the New York Collegiate Athletic Conference. After three years of NYCAC play, the Highlanders began a new era in the fall of 2000 as members of the **Central Atlantic Collegiate Conference**.

The CACC is in a transitional phase. For its first two seasons in the league, NJIT was the only CACC school with full NCAA membership. The others were in a provisional period while switching affiliation from the National Association of Intercollegiate Athletics (NAIA). Four volleyball-playing institutions completed their provisional requirements in the 2002, and this year, four more make their NCAA debuts: Goldey-Beacom College, Holy Family University, Nyack College, and University of the Sciences in Philadelphia. Georgian Court College sponsored volleyball for the first time in 2002, and Holy Family makes its debut this year.

The CACC has allowed the Highlanders to save tremendously on travel time and costs. NJIT is centrally located in the conference, and two other member schools are in New Jersey, allowing the opportunity to foster local rivalries.

More information is available at www.caccathletics.org.

2002 All-CACC Teams

First Team

S	Angie Estep, Fr, <i>Wilmington</i>
MH	Loria Bafundo, Sr, <i>Goldey-Beacom</i>
MH	Sherry Keech, So, <i>Georgian Court</i>
MH	Cintia Spaniol, Jr, <i>Bloomfield</i>
OH	Lindsay Miller, So, <i>Wilmington</i>
OH	Eduarda Modaneze, Sr, <i>Bloomfield</i>

Second Team

S	Megan Earl, Fr, <i>Dominican</i>
S	Courtney McGinnis, So, <i>Teikyo Post</i>
Opp	Raquel Sanchez, Sr, <i>Nyack</i>
MH	Lauren DiSabatino, So, <i>Wilmington</i>
MH	Christina Labocki, So, <i>Nyack</i>
OH	Aleesa DegliObizzi, Jr, <i>Wilmington</i>
OH	Emily Roth, Fr, <i>USP</i>

Honorable Mention

Melissa Czeremcha, *Teikyo Post*; Jennifer Giarratano, *Teikyo Post*; Kristen Homan, *Teikyo Post*; Gabrielle Pownall Brown, *Goldey-Beacom*.

Player of the Year

Eduarda Modaneze, *Bloomfield*

Co-Coaches of the Year

Patrick Hall, *Bloomfield*

Dawn Spellman, *Teikyo Post*

Team Sportsmanship Award

Georgian Court

2002 CACC Tournament

November 1 at NJIT

#1 Bloomfield 3, #4 Georgian Court 0

#2 Teikyo Post 3, #3 Dominican 0

Bloomfield 3, Teikyo Post 0

2002 CACC Standings

	CACC	Overall
Wilmington	16-0	25-16
Bloomfield	12-4	17-15
Goldey-Beacom	12-4	15-14
Teikyo Post	11-5	23-12
Nyack	9-7	15-11
USP	6-10	9-13
Dominican	4-12	7-20
Georgian Court	2-14	2-20
NJIT	0-16	0-18

2002 Leaders

Attack Percentage

Loria Bafundo, <i>Goldey-Beacom</i>	.324
Gabrielle Pownall-Brown, <i>Goldey-Beacom</i>	.304

Kills Per Game

Eduarda Modaneze, <i>Bloomfield</i>	5.78
Sherry Keech, <i>Georgian Court</i>	4.03

Assists Per Game

Courtney McGinnis, <i>Teikyo Post</i>	9.38
Angie Estep, <i>Wilmington</i>	9.02

Aces Per Game

Angie Estep, <i>Wilmington</i>	0.89
Andrea Connor, <i>Goldey-Beacom</i>	0.79

Digs Per Game

Eduarda Modaneze, <i>Bloomfield</i>	5.86
Emily Roth, <i>USP</i>	4.60

Blocks Per Game

Tia Abbey, <i>USP</i>	1.87
Eduarda Modaneze, <i>Bloomfield</i>	1.63



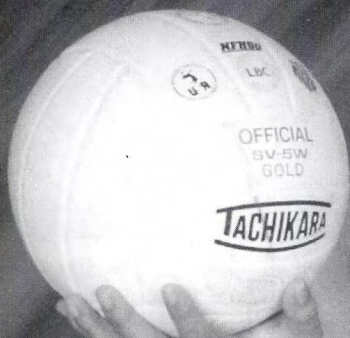
njit athletics directory

(as of 9/1/03, area code 973)

Title	Name	Phone	E-Mail
Director of Athletics	Lenny Kaplan	596-3636	kaplan@adm.njit.edu
Asst. Dir. Of Athletics.....	Joe Caiola	642-7224	caiola@adm.njit.edu
Asst. Dir. Of Athletics.....	Jim Casciano	596-5727	casciano@adm.njit.edu
Asst. Dir. Of Athletics.....	Kim Bowen Lusk.....	596-3633	bowen@adm.njit.edu
Asst. Dir. Of Athletics.....	Tim Wuorinen	596-5278	wuorinen@adm.njit.edu
Sports Info. Coord.....	Mark Mentone	596-8324	mentone@adm.njit.edu
Athletic Trainer	Roger Olean	596-3623	olean@adm.njit.edu
Asst. Dir of Phys. Ed.	Duane Felczak.....	596-3637	felczak@adm.njit.edu
Intramural Director	Tom Romano	596-2928	coachnjit@aol.com
Receptionist.....	April Lemon.....	596-3636	lemon@njit.edu
Faculty Athletics Rep.....	Dr. Roy Cornely.....	596-3537	cornely@adm.njit.edu
Front Desk	Jonathan Walker	596-5730	
Athletics Dept. FAX		596-8295	
Sports Information FAX.....		596-8440	
Swimming Pool Office		596-5229	
Results Hotline.....		596-5555	

Head Coaches

Men's Soccer.....	Pedro Lopes.....	596-5219	pedro.j.lopes@njit.edu
Women's Soccer	Tom Romano	596-2928	coachnjit@aol.com
Women's Volleyball	Pavlina Klimova.....	596-5380	njitvolleyball@hotmail.com
M/W Cross-Country	Al Alonso.....	596-3636	alonso@njit.edu
Men's Basketball.....	Jim Casciano	596-5727	casciano@adm.njit.edu
Women's Basketball	Kim Bowen Lusk.....	596-3633	bowen@adm.njit.edu
M/W Fencing	Janusz Mlynek.....	596-3636	njit.fencing@att.net
M/W Swimming	Tom Romano	596-2928	coachnjit@aol.com
Men's Volleyball.....	Michael Borga	596-5380	JSVBA@aol.com
Baseball.....	Brian Callahan.....	596-5827	callahan@njit.edu
Men's Tennis.....	Dr. Frank Koe.....	642-7499	koe@adm.njit.edu
Women's Tennis	Phil Baboulis.....	596-3636	pbtennis@optonline.net



2003 women's volleyball schedule

<u>Day</u>	<u>Date</u>	<u>Opponent</u>	<u>Time</u>
Tue.....	Sept. 9	at Georgian Court*	7 p.m.
Thu.....	Sept. 11	BRIDGEPORT	7 p.m.
Sat.....	Sept. 13	at Bloomfield* w/USP*	noon
Tue.....	Sept. 16	DOMINICAN (N.Y.)*	7 p.m.
Sat.....	Sept. 20	at Nyack* w/USP*	11 a.m.
Tue.....	Sept. 23	at Teikyo Post*	7 p.m.
Thu.....	Sept. 25	NYACK*	7 p.m.
Sat.....	Sept. 27	at Goldey-Beacom* w/Holy Family*	2 p.m.
Thu.....	Oct. 2	at Dominican (N.Y.)*	7 p.m.
Sat.....	Oct. 4	WILMINGTON*/TEIKYO POST*	noon
Thu.....	Oct. 9	GOLDEY-BEACOM*	7 p.m.
Sat.....	Oct. 11	at Wilmington (Del.)*	noon
Tue.....	Oct. 14	at Holy Family*	7 p.m.
Thu.....	Oct. 16	GEORGIAN COURT*	7 p.m.
Tue.....	Oct. 21	BLOOMFIELD*	7 p.m.
Sat.....	Oct. 25	at Saint Rose	2 p.m.
Mon.....	Oct. 27	MOLLOY	7 p.m.

Head Coach: Pavlina Klimova (American '00), 1st year

* Central Atlantic Collegiate Conference

Home matches (CAPS) at Entwisle Gymnasium