



VOLLEYBALL

2010



NJITHIGHLANDERS.COM



TABLE OF CONTENTS

About NJIT	2-3
University Administration	4-5
Student-athlete support	5-6
Athletics Senior Staff	6
NJIT in Division I	7
Coaching Staff	8
Roster	9
2009 Statistics and Results	10
About Newark	11
Athletics Facilities	12-13
Sports & Entertainment Around Newark	14-15
All-time honors/Program History	16
All-Time Roster	17
Division I Records	18
National Statistical Leaders	19
All-Time Opponents	19
NJIT Hall of Fame	20
Directions/Accommodations	21
Great West Conference	22

MEDIA INFORMATION

This guide is designed to assist in coverage of NJIT volleyball. For home matches, the NJIT sports information office will provide an official box score 10 minutes following each game. Coach JR Martins and requested players will be available for interviews on the court following a 10-minute cooling off period. Radio broadcast requests should be made at least 10 business days prior to the contest. Requests for coach and player interviews on non-game days should be made through the NJIT sports information office (973-596-8461).

CREDITS

The 2010 NJIT Women's Volleyball Guide is a production of the NJIT Sports Information Office in cooperation with the Office of University Communications. Written, compiled and edited by Tim Camp and Stephanie Pillari. Cover and interior design by Karyn Olsen Design. NJIT photographs and information courtesy of University Communications. All interior team and action photography by Larry Levanti. Photo of Red Bull Arena (page 15) courtesy Getty Images/RBNY.

WHY THE HIGHLANDERS?

The home of NJIT, University Heights, was formerly known as the Newark Highlands and NJIT's mailing address used to be High Street, until the thoroughfare was renamed in memory of Dr. Martin Luther King, Jr.

In 2006-07, NJIT athletics, in keeping with its move to NCAA Division I, unveiled a new graphic identity, which includes a new Highlanders logo (shown). Developed by CN Foundry for NJIT, the logo depicts the traditional Highlander, whose ferocity and bravery against all odds are the stuff of legend.



QUICK FACTS

New Jersey Institute of Technology

Location: University Heights, Newark, NJ

Founded: 1881

Enrollment: 5,924 (undergraduate)

NJIT website: www.njit.com

Nickname/Colors: Highlanders/Red and White (Blue accent)

Home Court/Capacity: Estelle and Zoom Fleisher Athletic Center/1,500

Affiliations: NCAA Division I, ECAC

Conference: Great West Conference

University President: Dr. Robert A. Altenkirch

Director of Athletics: Lenny Kaplan

Athletic Department Phone: 973-596-3636

Sports Information

NJIT Athletics website: www.njithighlanders.com

Results hotline: 973-596-5555

Assistant AD for Sports Information: Tim Camp

Phone/Email: 973-596-8461/timothy.camp@njit.edu

Assistant SID: Stephanie Pillari

Phone/Email: 973-596-8324/pillari@njit.edu

Women's Volleyball

Head Coach (alma mater, year):

Jose Reynaldo (JR) Martins (Lewis, 2004)

Email: J.R.Martins@njit.edu

Career Record: 17-11 (1)

Graduate Assistant Coach: Rodrigo Correa (NJIT '09)

Captains: TBD

2009 overall/conference (finish): 17-11/7-5 (3rd)

Returning/lost (starters): 7/6 (3/3 plus libero)

note: Renata Pandolfo, listed among the returning starters, will not play in 2010 due to offseason surgery

ON THE COVERS:

Inside front cover: Eberhardt Hall, the oldest building on the NJIT campus

Inside back cover: 2010 team photo

Back cover: 2010 schedule; a night view of the NJIT campus overlooking downtown Newark

NJIT is New Jersey's Science & Technology University. With roots going back to 1881, when it was founded as Newark Technical School, New Jersey Institute of Technology observed its 125th anniversary in 2006.

Located in University Heights, Newark, NJ, home to more than 30,000 college students, NJIT's campus is just 10 miles from New York City.

Playing a critical role in shaping New Jersey's future, NJIT, as a major public technological university, is an important pipeline for the flow of technology into society. The university's educational programs prepare students to be leaders in the technology-dependent economy of the 21st century. University researchers seek new knowledge to improve processes and products for industry. Through public and private partnerships and economic development efforts, the university helps to grow new business ventures that fuel the economy.

In recent years, NJIT has put more than \$83 million toward new and improved buildings and facilities on the 45-acre campus, including biomedical engineering labs and a campus center.

Instructional Programs

NJIT offers an ever-expanding array of educational programs, with eight new academic programs approved beginning in 2009-10, which comes after the addition of 14 new programs in 2008. As of 2009, NJIT



lists 55 bachelor's degree majors, 53 master's degree programs and 19 doctoral programs — through six schools:

Newark College of Engineering
College of Architecture and Design
College of Science and Liberal Arts
School of Management
Albert Dorman Honors College
College of Computing Sciences

NJIT has 416 full-time faculty; more than 98 percent of whom hold the highest degree in their field. The student-faculty ratio is 13:1, with more than 5,300 undergraduate students and more than 2,800 graduate students. Our students hail from 33 states and more than 100 countries to rank eighth in the nation for diversity.

Albert Dorman Honors College enrolls more than 500 students who take advantage of honors courses, research opportunities, advising and mentoring. Honors College students have SAT scores ranking in the top 10 percent nationally.

With more than 44,000 alumni, NJIT is rated by U.S. News and World Report as a top-tier research university offering bachelor's, master's and doctoral degrees.

Research

NJIT drew more than \$75 million in research funding in 2005 and faculty members welcome student collaboration on research projects.

Economic Development

NJIT is committed to economic development for Newark and the region. The university operates several outreach centers that provide direct technical assistance to the state's businesses with the goal of helping small and medium-sized companies. NJIT is also the home of New Jersey's oldest and largest incubator facility, and was one of the first institutions in the nation to adopt economic development as a fourth mission element, together with instruction, research and community service. More than 60 technology start-up companies, many of which hire NJIT students, are on campus.

The Career Edge

All 10 of the majors with the highest starting salaries for 2005-06 grads are in engineering, computing and business, according to the National Association of Colleges and Employers.

Computer and data processing services lead the list of the 10 fastest-growing occupations in projections compiled by the U.S. Department of Labor. Computer-related employment is expected to grow 117 percent by 2008, according to the Career Guide to Industries.

As technology changes all fields, those with science and technology backgrounds are positioned to lead. Among the CEOs of the S&P 500 companies, engineering is the single largest undergraduate degree and more than half of CEOs have undergraduate degrees in engineering, business management, science, math and computing.



The Global Edge

The diversity in NJIT's student body and faculty prepares graduates to understand and succeed in the global marketplace. NJIT was named among the world's top 500 universities in a study by the Institute of Higher Education, Shanghai Jiao Tong University.

The Technology Edge

NJIT has been designated as one of the nation's most technologically sophisticated universities by Forbes.com and a Princeton Review survey and the university has received major funding from the National Science Foundation and the National Security Agency in recent years.

The Academic Edge

NJIT has long been a national leader in applying new technologies and approaches to the education experience. NJIT was a pioneer in requiring computer science for students in all majors and the School of Architecture has led innovations in teaching CAD and digital design. The School's innovative "paperless" first-year program was recently cited by Campus Technology Magazine.

Students have a wide range of educational choices in building an interest-tailored program. Among their options are cross-enrolling at neighboring Rutgers to enrich their program with subjects such as music and languages.

NJIT students learn emerging technologies from researchers behind the technologies,

developing valuable marketplace skills. Real-world experience through experiential learning makes graduates more marketable, with many co-op opportunities leading to permanent jobs.

The Regional Edge

New Jersey, with America's highest concentration of pharmaceutical, hi-tech, biotech, and medical device companies, is the place to study technology. It has the nation's highest per capita number of engineers and scientists as residents, while also leading in per capita rate of patents issued. Further, the Newark-New York region is a living laboratory for architecture and building sciences, environmental engineering and transportation.

The Research Edge

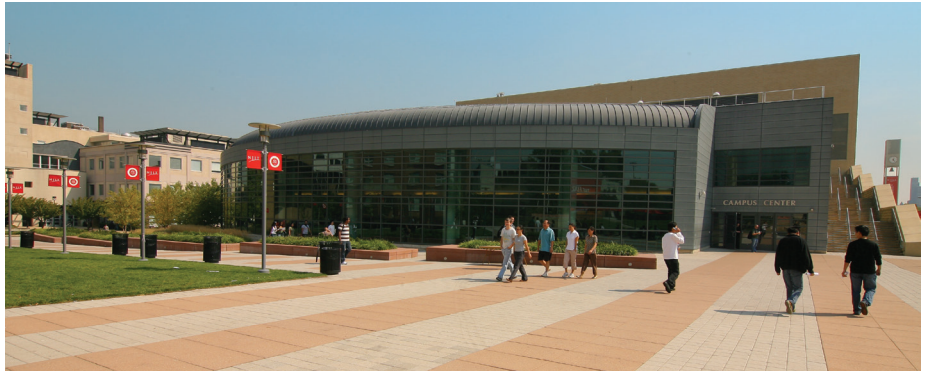
NJIT has been designated by the State of New Jersey as the Homeland Security Technology Systems Center and NJIT operates the world-renowned Big Bear Solar Observatory.

State Legislature, recognizing an urgent need, sought a home for what would be the state's technical school. The efforts of Newark's public and private sectors resulted with the opening of Newark Technical School, addressing the state's need.

Over time, the university expanded its curriculum and mission. In 1919, the university established baccalaureate programs in three engineering fields. By the middle of the 20th century, Newark Technical School was transformed into the robust Newark College of Engineering.

The post-war period was one of enormous activity with regular expansion of the campus, as well as the introduction of doctoral level programs. In 1975, with the addition of the New Jersey School of Architecture, the institution had evolved into a technological university, emphasizing a broad range of degrees and dedication to significant research and public service. Newark College of Engineering, stronger than ever, remained intact, but a new university name — New Jersey Institute of Technology — reflected the institution's expanded mission.

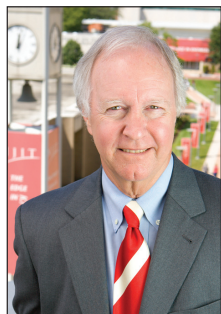
A broadened mission called for the creation of a residential campus and the opening of NJIT's first dormitory in 1980 began a period of steady growth that continues. Two new schools were established during the 1980s—the College of Science and Liberal Arts (1982) and the School of Industrial Management (1988). The Albert Dorman Honors College was established in 1994, and the newest school, the College of Computing Sciences, was created in 2001. Beginning in 2009 the College of Architecture and Design was created to house the New Jersey School of Architecture and the new school of Art and Design.



A History of NJIT

From the Industrial Revolution to the Information Age, New Jersey Institute of Technology has a rich history with its beginnings developing from the industrial age.

In 1881, an act of the New Jersey



Dr. Robert A. Altenkirch

President

Having joined NJIT as its seventh president in July 2002, Dr. Robert A. Altenkirch is leading the university in a period of multi-layered growth.

In recent years, NJIT has put more than \$83 million toward new and improved buildings and facilities, while also drawing similar dollars in annual research funding.

Under President Altenkirch, NJIT has expanded its course offerings, with 16 new degree programs added in the 2008-09 academic year alone, and 13 more in various stages of development for implementation in the following two years.

Coinciding with the expansion is NJIT's transition from a smaller commuter campus to a larger institution with a larger resident student population. The incoming class of 2013 was the

largest in the history of the school, and more than half the freshman class resides on campus.

Tied to that transition is Altenkirch's strong belief that the home institution in New Jersey's largest city needs to be residential and provide the experiences associated with a residential campus. At the same time, Altenkirch is committed to NJIT's involvement with the community in its home city of Newark.

Intercollegiate athletics fits those goals naturally and upgrading NJIT athletics has been a priority of Altenkirch's presidency going back to November 2002 meetings that led to NJIT's reclassification to NCAA Division I.

Adding a personal dimension to his support, Altenkirch, a multi-sport athlete in high school, freshman baseball player at Purdue University, and a former college soccer official, and his wife, Beth, are regular attendees at NJIT competitions, home and away.

Immediately before his selection as president of NJIT, Altenkirch was vice president for research at

Mississippi State University (MSU), a position he held from 1998 to 2002.

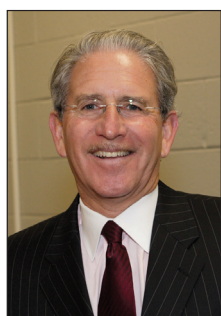
Prior to his appointment as vice president at MSU, Altenkirch served as dean of the College of Engineering and Architecture at Washington State University (1995-98).

From 1988 to 1995, he was dean of the College of Engineering at MSU. He also served as professor and chair of mechanical engineering at the University of Kentucky (1975-88).

Altenkirch holds a PhD from Purdue University, an MS from the University of California, Berkeley, and a BS from Purdue, all in mechanical engineering.

He is the author of over 50 publications and nearly 100 presentations in combustion and heat transfer and served as principal investigator for 10 Space Shuttle experiments investigating the spread of fire in reduced gravity.

He is a fellow of the American Society of Engineers and in 2008 received the Ellis Island Medal of Honor.



Dr. Joel Bloom

Vice President for Academic and Student Services

Dr. Joel Bloom, who joined NJIT in July 1990, is responsible for eight divisions of the university, including physical education and athletics.

In 1998, Bloom was appointed the first dean of the Albert Dorman Honors College in addition to his vice president responsibilities. The honors college enrolls over 500 students, including residents of 15 states and several foreign countries. The combined average SAT score is over 1300 and freshmen

typically have ranked in the top 10 percent of their high school graduating class. Honors College students maintain a grade point average higher than 3.5.

Prior to his arrival at NJIT, Dr. Bloom served seven years as assistant commissioner of the New Jersey Department of Education for the Division of General Academic Education. He was responsible for managing many of the education department's initiatives, over 300 grants and contracts, and a \$24 million budget.

Formerly a teacher and school administrator in New York City Public Schools, Dr. Bloom was also a director of research and instructor at Teacher's College, Columbia University.

He is chair of the Greater Newark Consortium for Pre-College Education and vice chair of the State Board for Communities and Schools. He serves further as a member of numerous boards at the state, regional and national levels and has received national and state education awards, as well as federal, foundation and corporate grant awards. He has published journal articles and presented papers on school improvement, curriculum development, college transition and student assessment.

Dr. Bloom holds a master's degree and a doctorate from Teacher's College, Columbia University. He also earned master's and bachelor's degrees from Hunter College of the City University of New York.



Lenny Kaplan

Director of Athletics

Since taking over as head of NJIT's division of physical education and athletics in August 2000, Lenny Kaplan has been instrumental in guiding NJIT's reclassification to NCAA Division I.

Kaplan helped stabilize and expand a program that was entering its fourth year in Division II when he arrived in Newark. In late 2002, after discussions

with university President Dr. Robert A. Altenkirch and Vice President Dr. Joel Bloom, Kaplan took on the task of steering NJIT's programs into Division I, a process that reached fruition with the NCAA's granting active Division I status, with full championship eligibility effective September 1, 2009.

Throughout Kaplan's tenure, NJIT has enhanced the athletics program, particularly in areas that benefit the student-athletes directly.

The sports offerings have expanded to its current 18 varsity programs. And since 2004, NJIT has renovated its two main on-campus venues—Lubetkin Field at J. Malcolm Simon Stadium at

Lubetkin Field and the Estelle and Zoom Fleisher Athletic Center. Further, construction has begun on the Naimoli Family Recreation Center, a 25,600-square foot facility on the site of the old tennis courts that will enhance the recreational and intercollegiate opportunities on campus.

The school also signed a 10-year partnership to play all home baseball in the professional Bears and Eagles Riverfront Stadium and later agreed to host basketball in the new Prudential Center, downtown Newark home of the NHL's New Jersey Devils.

Under Kaplan's leadership, many teams achieved regional and national Division II ranking. Success for several women's teams was unprecedented, with

basketball, tennis and soccer all reaching postseason play for the first time in his administration.

Additionally, men's volleyball captured a 2007 divisional championship in the Eastern Intercollegiate Volleyball Association and the next year reached the EIVA playoff semifinals hosted by eventual 2008 national champion Penn State.

Sports Medicine

NJIT sports medicine is moving forward with expanded facilities and a staff of three full-time trainers led by head trainer Matt Koscs, MS/ATC, with assistant trainers Paul Grayner, MEd/ATC, and Sandra Brendle, MEd/ATC. They work with team physicians Louis Rizio, MD, and Stephen Matta, DO.

Matt Koscs, who earned both his bachelor's and master's degrees from the University of Delaware, has served NJIT as head trainer since July 2009, a year after he joined the staff as an assistant trainer. As an undergrad at Delaware, he was recipient of the Paris Delligatti Memorial Award for Excellence in Athletic Training.

Prior to NJIT, he served three years as head trainer at Hodgson Vocational Technical High School in Newark, DE. He also worked with soccer clubs in Delaware and was employed at Christiana Care Physical Therapy Plus, in Newark, DE.

Paul Grayner, who holds a bachelor's degree from Saint Leo College in Florida and a master's from American University in Washington, DC, has a diverse background in athletic training, having served at the college and professional levels, as well as in a fitness center setting. He joined the NJIT staff late in 2008.

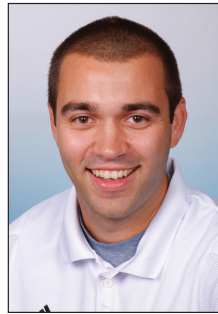
From the mid-1970s to the mid-1980s, he was a trainer in the minor league systems of the New York Yankees and New York Mets and in 1984 he was assistant trainer with the Mets. He later worked with the Long Island Knights professional basketball team.

At the collegiate level, he was head trainer at Fairleigh Dickinson University in Teaneck, NJ from 1989 to 1998 and earlier worked as an assistant trainer at Hofstra, Adelphi and FDU.

Sandra Brendle, who joined the NJIT staff as an assistant trainer in the summer of 2009, earned her bachelor's degree, majoring in athletic training, from Greensboro (NC) College in 2007. She earned her master's in athletic training at Old Dominion University in May 2009. At ODU, she

Kaplan guided the Highlanders toward further stability with membership in the newly-expanded all-sports Great West Conference, which offers a conference home for 11 of NJIT's varsity sports.

NJIT's outstanding home facilities will allow it to host conference championships in the Great West Conference and allowed it to host ECAC postseason championships in 2005-06.



Matt Koscs

worked with seven teams and was on the medical staff for the 2008 NCAA Division I Women's Basketball Tournament first and second rounds. At Greensboro, she was 2006 Athletic Training Student of the Year and worked on the 2004 NCAA Division III Men's and Women's Soccer Championship tournament medical staff.

Dr. Rizio is a board certified orthopedic surgeon and is fellowship trained in the field of sports medicine. He is a graduate of Rutgers and after earning his medical degree from the UMDNJ/New Jersey Medical School, Dr. Rizio completed his orthopedic residency at Tufts University in Boston.

He then completed a sports medicine fellowship at the University of Miami and was assistant team physician of the Hurricanes, as well as the Miami Dolphins, the Miami Hurricanes.

Dr. Rizio practices at the New Jersey Sports Medicine Institute in Livingston, NJ. Prior to starting his own practice, Dr Rizio was the Chief of Sports Medicine at the NJ Medical School from 2000-2005. He is affiliated with four New Jersey hospitals: St. Barnabas Medical Center (Livingston); Short Hills Medical Center (Short Hills); Mountainside Hospital (Montclair); and, Overlook Hospital (Summit).

Dr. Matta, who is board certified in family medicine, currently specializes in primary care sports medicine at Mountainside Hospital in Montclair, NJ, a post he assumed after three years in the family practice residency program at Valley Baptist Medical Center in Harlingen, TX. He is a 2007 graduate of a five-year DO/MBA dual degree program with Philadelphia College of



Paul Grayner

Before coming to NJIT, Lenny Kaplan served 11 years at Manhattan College, where he began as Manhattan's director of operations and was assistant athletics director from 1991-2000.

Kaplan, a 1988 graduate of St. John's University with a degree in athletics administration, resides in Merrick, NY, with his wife, Nancy, and their sons, Michael and Joshua.



Sandra Brendle

Osteopathic Medicine for his medical degree and Saint Joseph's University for an MBA in healthcare administration. He is a 2002 magna cum laude graduate of Duquesne University in Pittsburgh, with a BS in honors chemistry. He and his family reside in Belleville, NJ.



Dan Huff

Strength and Conditioning

Strength and conditioning is a key part of a successful Division I program, with an eye toward maximizing individual and team performance in competition. The strength and conditioning coach also works closely with the Athletic Training Staff in the areas of injury prevention and injury rehabilitation.

The 2008-09 year brought another dimension to NJIT athletics with the hiring of **Dan Huff**, CSCS, as the program's first full-time strength and conditioning coach. In addition to the hiring of a full-time coach to coordinate the strength and conditioning, NJIT renovated the weight rooms and purchased new equipment, with the area dedicated to use by the Highlander teams.

Huff previously served five years as strength and conditioning coordinator at Fairleigh Dickinson University in Teaneck, NJ, from 2003 to 2008, working with an 18-sport NCAA Division I program.

Huff was Sports Performance Director for Velocity Sports Performance in Wall, NJ, immediately before accepting his position at NJIT. He is a graduate of William Paterson University of New Jersey. He holds numerous certifications.

Academic Enrichment

NJIT's Center for Academic and Personal Enrichment (CAPE) added a new component in 2007 with the addition of an Associate Director position that was created for the specific purpose of serving the needs of NJIT's student-athletes.

The position focuses on five key areas: academic support, career development, personal development, leadership and community service including the Student-Athlete Advisory Committee and CHAMPS Life Skills for NJIT's nearly 300 student-athletes.

Sandra Taylor filled the post in January 2010, having previously spent her professional career at Manhattan College, which is also her alma mater.

Working at Manhattan, a founding member of the Metro Atlantic Athletic Conference, Taylor was most recently Associate Director of Athletics and Senior Woman Administrator, filling those posts from 1996 to 2010.

For much of that time (1995-2003), she was Chief Athletic Department Compliance Officer. She began her service at Manhattan as Athletic Department Ticket Manager, serving in that capacity from 1993 to 2003.



Sandra Taylor

She served on numerous NCAA, conference and internal college committees, including service on the NCAA Division I Management Council from 2004 to 2007 and as chair of the NCAA Women's Lacrosse Committee from 2002 to 2006.

She earned both her bachelor's degree in secondary education and her master's degree in special education from Manhattan College and is a doctoral candidate in educational leadership at St. Mary's University in Winona, MN.

Sandra and her husband, Ken, who is Associate Commissioner for Men's Basketball and Baseball at the MAAC, reside in Monroe Township, NJ, with their daughters, Katherine, who was born in May 2004, and Samantha, who was born in July 2009.



Tim Wuorinen

In 2008-09, **Tim Wuorinen** moved over to CAPE as eligibility certification officer/academic advisor, having spent the previous five-plus years working in the NJIT Department of Athletics as assistant athletic director and coordinator for compliance and student-athlete services.

Tim Wuorinen was a compliance fellow with the MAAC and he has worked in the athletic offices of four colleges, including Western New England College, his undergraduate alma mater. In addition to his bachelor's degree from Western New England, he earned a master's degree from NJIT.

Tim and his wife, Tara, who is the Academic/Athletic Coordinator at Saint Peter's College, reside in Aberdeen, NJ. Their son, Tyler, was born in May of 2010.

NJIT's Center for Academic and Professional Enrichment, headed by **Dr. Marybeth Boger**, is a resource available to all students within NJIT's Student Services Division. The CAPE provides academic support services and activities to enhance students' academic and professional development and it works with academic and administrative departments to help students develop the necessary analytical and problem-solving skills to become independent learners.

CAPE provides tutoring, student success workshops and testing accommodations.

ATHLETICS SENIOR STAFF



Alexis Schug

Assoc. Director of Athletics/SWA
(973) 596-8452
schug@njit.edu



Joe Caiola

Asst. Director of Athletics/
Business & Facilities
(973) 642-7224
caiola@adm.njit.edu



Tim Camp

Asst. Director of Athletics/
Sports Information
(973) 596-8461
timothy.camp@njit.edu

Beginning on September 1, 2009, the entire NJIT athletics program officially gained across-the-board active membership in NCAA Division I, completing a process that began officially in 2003.

NJIT, its teams, and student-athletes enjoy the full benefits of Division I membership, including eligibility for Division I postseason championship competition and the inclusion of the Highlanders among the national Division I leaders in statistics maintained by the NCAA.

Within months of NJIT's active Division I membership, the school won its first national Division I statistical championships, as women's volleyball player Sabrina Baby led the nation in digs per set, while she and her teammates captured the team digs crown for digs, as well.

The NCAA's decision making NJIT a full member of Division I completed a specific timetable that required NJIT and its Department of Athletics to meet a series of annual benchmarks before proceeding to the next step.

NJIT, which previously competed in NCAA Division II, first moved to reclassify its men's soccer program in 2003. The move grew out of November 2002 meetings among President Robert A. Altenkirch, Vice President Joel Bloom, and Director of Athletics Lenny Kaplan. From there, came a proposal from Dr. Altenkirch to the Board of Trustees, which unanimously approved in February 2003 a plan to reclassify men's soccer to Division I. Little more than two years later, the NCAA approved NJIT's proposal to begin advancing its entire program to Division I.

Men's soccer achieved active Division I status in 2005 and NJIT women's soccer became postseason-eligible in 2007. The remainder of NJIT's athletics program also began reclassifying in 2005, with active status taking longer for an entire program than under the single-sport-per-gender track used for the two soccer teams.

In 2005-06 the lion's share of the competition all but men's soccer came at the Division II level. In 2006-07, 2007-08, and 2008-09, NJIT's teams competed at the Division I level and complied full with NCAA Division I rules, but were not eligible for championships at the top level.

Every facet of the program has been enhanced in the reclassification, with a special emphasis placed on student-athlete welfare. Facility upgrades have gone along with sports medicine staff expansion, a strength and conditioning program, and academic enrichment. NJIT has also built a model NCAA Division I rules compliance regimen within its athletics program and across the entire university.

A key late benchmark in reclassification came in the spring of 2009, with NJIT's successful completion of the NCAA Division I certification self-study. An in-depth project that takes approximately one year to complete and involves an on-campus visit from a Peer Review team, Division I certification, renewable every 10 years, is required of all active Division I institutions.

"We completed a major milestone in demonstrating that we have the infrastructure in place and the commitment to compete at the highest levels, not only academically but now athletically as well," said Dr. Altenkirch, who made upgrading athletics a priority from the beginning of his tenure as the seventh President of NJIT in May 2002.

Professor Robert English, the NCAA Faculty Athletics Representative and Interim Dean of the School of Management, added, "I am very impressed with NJIT's student-athletes who have worked hard to meet the challenge of the heightened level of Division I competition and at the same time continued to excel academically, with many athletes earning academic honors and awards and several earning perfect 4.0 GPAs during the semester of competition."

Further, the NJIT Board of Trustees embraced the transition to Division I as part of the university's strategic plan to enhance the quality of campus

life in NJIT's transition to a residential university.

Going back to early announcements of NJIT's NCAA reclassification plans, Altenkirch stated: "As NJIT continues to grow academically, and as a residential university, strengthening the athletics program through the transition to Division I will allow us to align the university with our academic peers."

Already, NJIT's teams have competed throughout the United States, taking on opponents from schools that are instantly recognizable for their stature in academics and athletics.

NJIT teams and student-athletes have faced opponents from seven of the eight Ivy League schools (all except for Brown) and all eight Patriot League schools, including Army and Navy, Bucknell, Lafayette, and Lehigh.

In addition, Highlander teams have taken on teams from such famed conferences as the Atlantic Coast Conference, Big East Conference, Big Ten Conference, and Pac 10 Conference, with competition against Missouri of the Big 12 Conference slated for December 2010 in women's basketball.

Two high-profile opponents--Maryland in men's soccer in 2005 and Penn State in men's volleyball in 2008—won national championships following the same regular seasons in which they faced NJIT.

The Highlanders have also competed against members of all of the conferences based in the Northeastern and Mid-Atlantic regions of the United States, including America East, Atlantic 10, Colonial, Metro Atlantic, Mid-Eastern, and Northeast.

The eighth New Jersey-based institution in Division I, NJIT has competed against all seven of its home state peers, including Big East programs Rutgers and Seton Hall.

NJIT's longest-established Division I program, men's soccer, gained its first win against a Big East foe in 2008, defeating Rutgers a year after topping San Diego State for the Highlanders' first win over a Top 25-ranked team.

With its place in Division I officially certified by the NCAA, NJIT is looking ahead to continued growth. That outlook is consistent with President Altenkirch's frequently expressed view that, "the transition to Division I is just that, a transition, a process rather than an event."

For his part, Director of Athletics Lenny Kaplan said: "We are looking forward to being a solid and successful member of Division I and we are excited by the opportunity to write a new chapter in the history of NJIT athletics."



Janet Snell

COACHING STAFF



JR Martins

Head Coach

JR Martins (mar-TEENS) assumed leadership of the women's volleyball program in 2009 after three seasons as the top assistant for NJIT's women's volleyball and men's volleyball teams.

His first season at the helm saw the program continue to grow as it became a full member of NCAA Division I for the first time. The 2009 Highlanders finished with a 17-11 overall record and achieved national recognition when the led Division I in team digs per set (19.80) and Sabrina Baby, the senior libero, was the national individual leader in digs per set (6.27).

The 17-11 record that included a 7-5 mark in the first year of Great West Conference play came on the heels of an 18-16 record as an independent in 2008.

Martins' appointment as women's volleyball head coach was part of a reorganization of the coaching structure for NJIT's two volleyball teams. Ryan McNeil, who had been head coach of both teams, stepped down from coaching women's volleyball to focus on his duties as men's volleyball head coach.

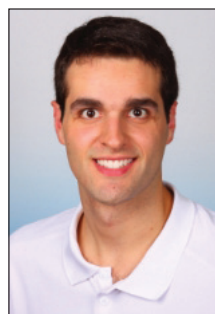
Martins (whose initials, 'JR', stand for Jose Reynaldo) is a native of Brazil who was a four-year college player at Lewis (IL) University, graduating in 2004. He was a captain and starter on the Lewis team that won the 2003 NCAA national championship match (later vacated). A four-year dean's list student at Lewis, he was a 2004 Academic All-America.

With NJIT women's volleyball, he helped a successful transition to Division I from Division II, as the Highlanders improved their wins total from 10 in 2006, to 13 in 2007 and then to 18 in 2008, for the program's highest wins total since 1990, when it won 23 matches at the Division III level.

Assisting McNeil on the men's side, Martins helped NJIT to the 2007 Eastern Intercollegiate Volleyball Association Hay Division regular season championship and to a berth in the 2008 EIVA playoff semifinals.

Martins is also a graduate of Pontific Catholic University of Campinas in his home country. A veteran of the Brazilian army, he has coached collegiate volleyball in Brazil and then club volleyball in the Midwestern United States, before returning to Brazil, where he played and coached club ball.

He resides in Newark.



Rodrigo Correa

*Men's and Women's Volleyball
Graduate Assistant*

A 2009 NJIT graduate, Correa is serving as an assistant coach with both the women's and men's volleyball teams.

A 6-foot-4 setter who chose to pursue his studies at NJIT over an offer to play for Brazil's Junior National Team, Correa was a four-year starter and the assists leader for the Highlanders, ranking 26th nationally in assists as a senior, 18th as a junior, and 20th as a sophomore.

A native of Sao Paulo, Brazil, and the son of an economist, Correa was a business management/finance major enrolled in NJIT's Albert Dorman Honors College.

He earned all-academic honors in the Eastern Intercollegiate Volleyball Association each of his last three seasons playing for NJIT.

He resides in Jersey City, NJ.



2010 ROSTER

NUMERICAL

No.	Name	Yr.	Ht.	Pos.	Hometown/High School
1	Audrey Snell	Jr.	5-5	L	Bogota, NJ / Bogota
2	Anna Mercado	So.	5-10	S	Covina, CA / St. Lucy's Priory
3	Janet Snell	So.	5-11	OH/RS	Bogota, NJ / Bogota
4	Julia Colombo	Fr.	6-0	M	Campinas, Sao Paulo, Brazil / Imaculada
5	Katie Bartlett	Fr.	5-10	OH	Sylvania, OH / Northview
7	Baaba Hughes	Sr.	5-8	OH/RS	Toronto, Ontario / Mother Teresa Catholic
8	Carly Ziemer	Fr.	5-9	S	Omaha, NE / Millard West
9	Juliana Araujo	Jr.	5-10	OH/RS	Campinas, Sao Paulo, Brazil / Anglo Taquaral
10	Catherine Leung	Fr.	5-9	DS	Lomita, CA / Rolling Hills Preparatory
11	Renata Pandolfo	Jr.	5-10	OH/RS	Joinville, SC, Brazil / Barao do Rio Branco
12	Valerie Carroll	Fr.	6-1	OH	Midlothian, VA / Midlothian
13	Gretchen VonKoenig	Fr.	6-1	M	Akron, OH / Firestone
15	Fernanda Lima	So.	6-0	M	Campinas, Sao Paulo, Brazil / Lakeland

ALPHABETICAL

No.	Name	Yr.	Ht.	Pos.	Hometown/High School
9	Juliana Araujo	Jr.	5-10	OH/RS	Campinas, Sao Paulo, Brazil / Anglo Taquaral
5	Katie Bartlett	Fr.	5-10	OH	Sylvania, OH / Northview
12	Valerie Carroll	Fr.	6-1	OH	Midlothian, VA / Midlothian
4	Julia Colombo	Fr.	6-0	M	Campinas, Sao Paulo, Brazil / Imaculada
7	Baaba Hughes	Sr.	5-8	OH/RS	Toronto, Ontario / Mother Teresa Catholic
10	Catherine Leung	Fr.	5-9	DS	Lomita, CA / Rolling Hills Preparatory
15	Fernanda Lima	So.	6-0	M	Campinas, Sao Paulo, Brazil / Lakeland
2	Anna Mercado	So.	5-10	S	Covina, CA / St. Lucy's Priory
11	Renata Pandolfo	Jr.	5-10	OH/RS	Joinville, SC, Brazil / Barao do Rio Branco
1	Audrey Snell	Jr.	5-5	L	Bogota, NJ / Bogota
3	Janet Snell	So.	5-11	OH/RS	Bogota, NJ / Bogota
13	Gretchen VonKoenig	Fr.	6-1	M	Akron, OH / Firestone
8	Carly Ziemer	Fr.	5-9	S	Omaha, NE / Millard West

Baaba Hughes

Juliana Araujo



2009 STATISTICS AND RESULTS

All matches

RECORD:	OVERALL	HOME	AWAY	NEUTRAL
ALL GAMES	17-11	7-2	5-6	5-3
CONFERENCE	7-5	4-2	2-3	1-0
NON-CONFERENCE	10-6	3-0	3-3	4-3

##	Player	sp	Attack					Set		Serve			re	Dig		Blocking						bhe	points
			k	k/s	e	ta	pct	a	a/s	sa	se	sa/s		dig	dig/s	bs	ba	total	blk/s	be			
11	Renata Pandolfo	97	348	3.59	127	1150	.192	11	0.11	33	25	0.34	23	362	3.73	15	21	36	0.37	3	2	-	
7	Baaba Hughes	96	248	2.58	120	939	.136	6	0.06	19	10	0.20	4	234	2.44	5	14	19	0.20	0	0	-	
4	Kristy Haeckel	97	183	1.89	63	478	.251	9	0.09	17	25	0.18	4	82	0.85	14	30	44	0.45	7	1	-	
10	Katrina Hornstein	84	169	2.01	79	630	.143	15	0.18	14	20	0.17	27	188	2.24	1	25	26	0.31	1	0	-	
15	Fernanda Lima	93	82	0.88	41	253	.162	14	0.15	0	0	0.00	1	37	0.40	13	56	69	0.74	1	2	-	
3	Janet Snell	54	84	1.56	46	297	.128	8	0.15	7	3	0.13	5	85	1.57	2	2	4	0.07	3	1	-	
6	Erica Schultz	95	27	0.28	9	77	.234	799	8.41	19	20	0.20	1	231	2.43	1	22	23	0.24	0	13	-	
8	Sabrina Baby	97	5	0.05	2	15	.200	88	0.91	19	21	0.20	25	608	6.27	0	0	0	0.00	0	3	-	
2	Anna Mercado	34	8	0.24	5	21	.143	116	3.41	5	13	0.15	0	46	1.35	0	4	4	0.12	0	5	-	
9	Juliana Araujo	5	2	0.40	1	12	.083	1	0.20	0	1	0.00	0	6	1.20	1	1	2	0.40	0	0	-	
12	Chanelle Preradovich	14	2	0.14	2	14	.000	0	0.00	0	0	0.00	0	3	0.21	0	0	0	0.00	0	0	-	
1	Audrey Snell	39	0	0.00	0	1	.000	2	0.05	1	2	0.03	5	39	1.00	0	1	1	0.03	0	1	-	
13	Claudia Gamarra	1	0	0.00	0	1	.000	0	0.00	0	0	0.00	0	0	0.00	0	0	0	0.00	0	0	-	
TEAM			-	-	-	-	-	-	-	-	-	-	19	-	-	-	-	-	-	-	-	-	
NJIT			97	1158	11.94	496	3889	.170	1069	11.02	134	140	1.38	114	1921	19.80	52	176	140.0	1.44	15	28	-
Opponents			97	1155	11.91	611	3949	.138	1073	11.06	114	184	1.18	134	1957	20.18	37	284	179.0	1.85	45	47	-

Team Statistics	NJIT	OPP
ATTACK		
Kills	1158	1155
Errors	496	611
Total Attacks	3889	3949
Attack Pct	.170	.138
Kills/Set	11.9	11.9
SET		
Assists	1069	1073
Assists/Set	11.0	11.1
SERVE		
Aces	134	114
Errors	140	184
Attempts	2170	1970
Serve Pct	.935	.907
Aces/Set	1.4	1.2
SERVE RECEPTIONS		
Errors	114	134
Errors/Set	1.2	1.4
DEFENSE		
Digs	1921	1957
Digs/Set	19.8	20.2
BLOCKING		
Block Solo	52	37
Block Assist	176	284
Total Blocks	140.0	179.0
Blocks/Set	1.4	1.8
Block Errors	15	45
Ball handling errors	28	47
ATTENDANCE		
Total	3277	4015
Dates/Avg Per Date	9/364	11/365
Neutral site #/Avg	8/73	-
Current win streak	0	-
Home win streak	0	-

Date	Opponent	Score	Score by set	Att.
08/28/09	at St. Francis (NY)	w 3-0	25-14,25-15,25-16	79
08/29/09	vs Bucknell	w 3-0	25-21,25-23,25-16	112
08/29/09	vs Saint Peter's	w 3-0	25-19,25-17,25-16	116
Sep 02	FDU	w 3-1	25-17,25-27,25-22,25-16	675
Sep 04	vs Hartford	w 3-0	25-17,25-11,25-18	48
09/05/09	at Central Connecticut	w 3-0	25-21,25-16,25-16	104
09/05/09	vs Manhattan	w 3-0	25-15,25-19,25-18	74
Sep 09	SACRED HEART	w 3-0	25-21,25-19,25-10	300
%Sep 11	vs VT	L 0-3	20-25,17-25,16-25	0
%Sep 12	at American University	L 1-3	25-21,16-25,20-25,24-26	221
Sep 15	COLUMBIA	w 3-0	25-18,25-18,25-20	202
\$Sep 18	at Seton Hall	L 0-3	18-25,17-25,23-25	266
Sep 19	vs Yale	L 0-3	23-25,18-25,17-25	56
Sep 19	vs Hofstra	L 1-3	20-25,25-15,18-25,20-25	66
*Sep 25	vs UTPA	w 3-0	25-13,25-14,25-23	114
*Sep 26	at HBU	w 3-1	22-25,25-18,25-23,25-16	226
*Oct 03	CHICAGO STATE	w 3-0	25-17,25-19,25-16	200
*Oct 10	UTAH VALLEY	w 3-2	25-18,25-20,22-25,18-25,15-11	400
Oct 14	at Lafayette	w 3-0	25-21,25-16,25-22	68
*Oct 23	at UND	L 0-3	20-25,15-25,11-25	891
*Oct 25	at USD	L 2-3	25-18,21-25,16-25,25-23,12-15	257
*Oct 29	HBU	w 3-0	25-15,25-20,25-17	200
*Oct 31	UTPA	L 1-3	21-25,25-22,23-25,22-25	200
*Nov 05	USD	w 3-1	28-30,25-11,25-16,25-21	800
*Nov 07	UND	L 0-3	16-25,16-25,17-25	300
*Nov 12	at Utah Valley	L 1-3	14-25,21-25,25-19,9-25	1016
*Nov 14	at Chicago State	w 3-0	25-15,25-9,25-9	640
Nov 20	at HBU	L 2-3	25-17,17-25,23-25,25-19,11-15	247

Record in 3-set matches: 13-5

Record in 4-set matches: 3-4

Record in 5-set matches: 1-2

Newark: The Renaissance City

NJIT is located in the heart of New Jersey's largest city, Newark, with a population of over 300,000, making it the 65th-largest city in the United States. A major urban center, Newark is a city on the move.

Attractions in Newark include:

- The Prudential Center, a major indoor entertainment and sports venue housing New Jersey Devils hockey, New Jersey Nets basketball, major concerts and other premier events
- New Jersey Performing Arts Center
- The Newark Museum
- The Newark Public Library
- Symphony Hall
- Branch Brook Park
- Art galleries, restaurants, shopping
- The Ironbound neighborhood, renowned for its dining and vibrant nightlife
- An urban architectural laboratory
- Professional minor league baseball (Newark Bears)



Newark: New Jersey's College Town

Some 30,000 undergraduate, graduate, and professional students attend classes in the University Heights section, which is home to NJIT, Rutgers-Newark, the University of Medicine and Dentistry of New Jersey (UMDNJ), and Essex County College.

Adjacent to NJIT to the east, is the Newark campus of Rutgers University and the two schools enjoy an exceptionally close and productive relationship. NJIT and Rutgers students have library privileges at both campuses. NJIT students may also enrich their educational experience by enrolling in Rutgers-Newark courses and in full degree programs in disciplines not offered by NJIT, such as art, music, geology, and psychology.

Each year, the two universities co-sponsor a common season of theatrical productions, as well as 'World Week,' a joint program of honors colloquia, and a variety of other cultural and social activities.

NJIT also enjoys a cooperative relationship with its neighbor to the west in the University Heights area, UMDNJ, with several joint degree programs.

New Jersey/New York Metropolitan Region

NJIT and Newark are a part of a region that is a magnet not only to the rest of the United States, but also to the world.

In Newark and neighboring northern New Jersey alone, attractions such as the Prudential Center, New Jersey Performing Arts Center, Meadowlands Sports Complex, Red Bull Arena, Liberty Science Center, and numerous others are minutes away by car and in most cases accessible by public transportation. Literally dozens of shopping malls are within a 20-minute drive of Newark, as well.

Midtown Manhattan, with all that it and the rest of New York City offer, is less than 15 miles from the NJIT campus.

NJIT students have regular access to discount tickets for Broadway shows, museums, concerts, and sporting events.

The school also sponsors weekend trips throughout the northeastern United States, with activities such as skiing, boating, swimming, hiking, and more.

The spectacular Jersey shore is less than an hour away by car and winter sports are within a couple of hours drive to the west and north.



The New Jersey Institute of Technology teams play home games and practice in a combination of facilities on-campus and off.

The on-campus facilities include Lubetkin Field at J. Malcolm Simon Stadium for outdoor sports and the Estelle and Zoom Fleisher Athletic Center for indoor sports. In addition, NJIT is constructing the Naimoli Family Athletic and Recreational Facility, a multi-purpose indoor facility on the site of the former outdoor tennis courts.

Off-campus venues include Bears and Eagles Riverfront Stadium, a professional minor league stadium that is the home of NJIT baseball; the Prudential Center, home of the NHL Devils and NBA Nets, which has hosted selected NJIT basketball games; and, Branch Brook Park in Newark and Van Cortlandt Park in the Bronx, home sites for NJIT cross country. All except for Van Cortlandt Park are less than two miles from the NJIT campus.

Lubetkin Field at J. Malcolm Simon Stadium

The men's and women's soccer teams play their home games and practice on campus at Lubetkin Field at J. Malcolm Simon Stadium, a first-class venue for college soccer.

The field on the west end of NJIT's University Heights campus, is an all-weather facility, with 24/7 availability for competition or practice. Outfitted with SprinTurf artificial grass in the summer of 2004, Lubetkin Field also includes lighting for night contests, bleacher seating for more than 1,000 spectators, a press box and scoreboard.

The fully-enclosed facility, with its entrance a few feet opposite the entrance of the indoor Estelle and Zoom Fleisher Athletic Center, can take its place alongside any college soccer facility in the

Northeast.

The home of Highlanders soccer served as the host site for the first-ever Great West Conference women's soccer championship tournament in November 2009. Previously, NJIT hosted the three-day 2005 ECAC Division II women's soccer championship tournament.

In the fall of 2005, when the Northeast was hit with record rainfall, games went on without a hitch at Lubetkin Field, thanks to the quality of the surface. Indeed, with the rain disrupting schedules around the region, some crucial Big East contests involving Seton Hall were moved to Lubetkin Field. Those games, too, went off without a hitch.

Estelle and Zoom Fleisher Athletic Center

The NJIT men's and women's basketball teams and men's and women's volleyball teams play their home games in the Fleisher Athletic Center gymnasium, while the swimming team competes and practices in building's pool. The Fleisher Center also houses intercollegiate fencing, as well as all athletic department offices, varsity and general weight and fitness rooms, and the athletic training room.

In the summer of 2006, the gym underwent renovation to include installation of a new floor and baskets, new lighting, new sound system and new scoreboards, along with entirely new seating for approximately 1,500 spectators after the first phase of renovation. The back bay 'C gym' can be sectioned off from the main competition floor, making the facility useful for intramurals, physical education classes and campus recreation time, while being able to host multiple simultaneous events.



A six-lane swimming pool in Fleisher Athletic Center is home to the NJIT swimming team. Fencing has its own area on the second floor of the building.

In addition to all athletic department offices, the Fleisher Athletic Center also houses the sports medicine staff in the Athletic Training Room and the varsity weight room, supervised by the head strength and condition coach. The building's third floor is home to a fitness center, which is open for use by all students and staff.

The Naimoli Family Athletic and Recreation Facility

Scheduled to open in 2011, the facility, under construction, will be approximately 25,600 square feet. The Naimoli Family Center will be a multi-purpose space for athletics, community recreation, and gatherings involving large numbers of people.

Built on top of the old outdoor tennis courts adjoining the Fleisher Athletic Center, construction of this new building has been made possible, in part, by a generous gift from Vincent Naimoli '62, Chairman and CEO of Anchor Industries International and Chairman Emeritus/ Founder of the Tampa Bay Rays major league baseball team..

The facility will house courts for tennis, and will be made available for other athletic and recreational activities, including practice for basketball and volleyball. It will be heated and air conditioned, with flooring appropriate for the intended athletics and recreational activities.



Bears and Eagles Riverfront Stadium: Home of the NJIT Highlanders

Joe Torre, then the manager of the New York Yankees, visited New Jersey Institute of Technology on December 8, 2005 to herald a new partnership between NJIT's baseball team, the Highlanders, and the Newark Bears.

Torre, a friend of the Bears and of college baseball, was on hand as the Highlanders signed a 10-year contract to play their home games at Bears & Eagles Riverfront Stadium in Newark.

"I think this partnership is nothing but aces," Torre said during a press conference at NJIT. "It's a partnership between two class organizations that will make for nothing but a lot of fun for everyone."

For the previous two years, the Highlanders played their home games at the stadium. But the team's longer-term commitment to play at the stadium came as NJIT elevated its baseball program to Division I.

"NJIT is bringing Division I baseball to this great stadium," said NJIT President Robert A. Altenkirch, "which will generate the highest level of excitement. It's a great partnership that allows NJIT to play intercollegiate baseball in a great facility, maybe the best for college baseball in the country."

Bears and Eagles Riverfront Stadium, the \$30 million state-of-the-art home of the Newark Bears, officially opened to the public on July 16, 1999.

With a seating capacity of 6,200 Bears and Eagles Riverfront Stadiums affords everyone in attendance an up-close view of the action. The ballpark also has 20 luxury suites, a picnic area, a party deck, a concert stage situated behind the outfield wall and a major league-caliber press box featuring two radio booths and two television booths.



The name, Bears and Eagles Riverfront Stadium, honors Newark's rich baseball history. The original Bears were a farm team for the New York Yankees up until 1949 and the Eagles were a very successful Negro League team that played in Newark until 1950.

Prudential Center

In October 2007, the Prudential Center ushered in a new era in sports and entertainment in Newark and the entire northern New Jersey area.

Prudential Center is the cornerstone in the revitalization and renaissance of downtown Newark. In addition to the arena, Newark will soon add scores of condominiums, restaurants, themed bars and mixed retail establishments. Prudential Center, one of the finest arenas in the country, is New Jersey's home for hockey, basketball, concerts and numerous other events.

A public/private partnership between the City of Newark and Devils Arena Entertainment made the \$375 million Prudential Center a reality that is changing the face of downtown Newark and making it a destination place for sports and live entertainment in the region.

"The Rock" is located about a mile from NJIT's University Heights campus and is known best as the home of the National Hockey League New Jersey Devils and now, the home of the National Basketball Association New Jersey Nets.

The arrival of the spectacular Prudential Center nearly coincides with NJIT's arrival as an NCAA Division I institution--the first in Newark and the newest in New

Jersey in more than 20 years. The Rock opened one year after NJIT began Division I competition as part of its NCAA reclassification which is now complete.

In the arena's inaugural year, NJIT played host to six basketball games on four dates, including four men's basketball games and two women's games. Included was the first women's basketball game in the building's history, when the Highlanders entertained Cornell on January 15, 2008.

The Highlanders have hosted additional basketball games each year of the building's existence and will play there again in 2010-11. Further, NJIT's club ice hockey team plays all of its home games in the full-size Devils practice rink facility (AmeriHealth Pavilion), which adjoins the main arena and has an 800-seat capacity. And one of the special events held in the main arena is NJIT's annual commencement.

Branch Brook Park and Van Cortlandt Park

A hallmark of the NJIT cross country program under veteran coach Al Alonso is its ability to host cross country competition that have made Highlander-sponsored races a popular destination for school from throughout the New York/New Jersey area.

In 2009, NJIT hosted the Great West Conference championships at Van Cortlandt Park in the Bronx, and the course, which is home to some of the most prestigious events in the sport, is also the home venue for other annual NJIT-hosted races. Branch Brook Park, which is a public park of Essex County, reaches into several towns, including Newark, with the park entrance less than a mile from the NJIT campus.

NJIT, with its campus in Newark, NJ, sits in a region that abounds with major professional sports unlike any other in the United States and perhaps in the world. There are nine teams in the major professional leagues (MLB, NFL, NBA, and NHL) located in New York City, northern New Jersey and Long Island.

Only one of nine major teams is more than 25 miles from Newark, but most, including the New Meadowlands Stadium (Giants and Jets NFL football), Madison Square Garden (NBA Knicks, NHL Rangers), are much closer.

The three closest professional sports venues (listed below) are within three miles of NJIT's campus and can be accessed in a matter of minutes at low cost by public transportation, beginning with Newark Light Rail, from campus.

Prudential Center

The home of the National Hockey League New Jersey Devils and the New Jersey Nets of the National Basketball Association is in downtown Newark at the corner of Mulberry and Edison streets, about one mile from the NJIT's University Heights campus.

Opened in October 2007, 'The Rock' is the centerpiece of the city's Downtown Core Redevelopment Project. In addition to NHL hockey and NBA basketball, it has hosted numerous entertainment and sporting events, including NJIT basketball.

NJIT played basketball in the Rock in the inaugural year and in each year since. Indeed, NJIT hosted the first women's basketball game ever played in the Prudential Center on January 15, 2008 (NJIT vs. Cornell).

The arena, with full-capacity seating for 18,500 spectators, features a 4,800 square-foot exterior LED screen, as well as the latest in ice-surface technology and a gourmet restaurant overlooking the ice for Devils games. The building contains 850,000 square feet of space, 9,000 tons of steel, eight million pounds of structural steel and 25,000 cubic yards of concrete.

Prudential Center





Red Bull Arena

Red Bull Arena

Located in Harrison, NJ, just across the Passaic River from Newark and less than three miles from the NJIT campus, the new home of the New York Red Bulls (opened in March 2010) sets the standard for soccer venues across North America.

The state-of-the-art soccer-specific facility is a major component of a multi-billion dollar development.

Red Bull Arena has a number of key design elements which give its seating bowl a close-to-the-action feeling and the unique stadium roof design extends from its leading edge over the entire seating bowl and then curve down to the concourse.

The overall seating capacity for soccer is 25,000, including 30 luxury suites (20 lower level and 10 upper level) and 1,116 club seats. Other amenities include three stadium clubs and two retail outlets.



Bears and Eagles Riverfront Stadium

Bears and Eagles Riverfront Stadium

Bears and Eagles Riverfront Stadium, the \$30 million state-of-the-art home of the professional baseball Newark Bears and since 2004 the home of NJIT Highlanders baseball, officially opened to the public on July 16, 1999. With a seating capacity of 6,200, "The Den" affords fans an up-close view of the action. The ballpark also has 20 luxury suites, a picnic area, a party deck, a concert stage situated behind the outfield wall and a major league-caliber press box.

In December 2005, NJIT and the Bears held a joint press conference to herald a new partnership that includes a 10-year deal that extends Bears and Eagles Riverfront Stadium as the home of NJIT Highlanders baseball.

ALL - TIME H O N O R S

DIVISION III ERA

POSTSEASON APPEARANCES

ECAC Metro

1987, 1988

CONFERENCE CHAMPIONS

WIAC

1985, 1986, 1988

Independent Athletic

Conference

1986, 1988

CONFERENCE PLAYER

OF THE YEAR

Independent Athletic

Conference

1988 – Sonia Zacher

GTE REGIONAL ACADEMIC

ALL-AMERICA

1988 – Sonia Zacher

ALL-WIAC

1984

Eileen Bagasse

Marilyn Dawson

Heidi Harting

1985

Eileen Bagasse

Marilyn Dawson

Liz Goldrick

1986

Marilyn Dawson

Claire Nicolaou

1987

Claire Nicolaou

1988

Denise Corsaro

Liz Goldrick

Gina Ochs (2nd)

Sonia Zacher

1989

Denise Corsaro

Kathy Eng (2nd)

Ursula Fukazawa (2nd)

Yanet Gonzalez

1990

Kathy Eng

Yanet Gonzalez

Gina Ochs

Joanie Pratt

1991

Kathy Eng

Connie Krzeminski (HM)

1992

Kathy Eng

1995

Wendy Gruenewald (HM)

Lenny Jiminez

ALL-INDEPENDENT ATHLETIC

CONFERENCE

1986

Denise Corsaro

Marilyn Dawson

Liz Goldrick (2nd)

Claire Nicolaou

Regina Rygelis (2nd)

1987

Liz Goldrick

Claire Nicolaou

Gina Ochs (2nd)

Sonia Zacher (2nd)

1988

Denise Corsaro

Liz Goldrick

Yanet Gonzales (2nd)

Gina Ochs

Sonia Zacher

1989

Denise Corsaro

Kathy Eng (2nd)

Ursula Fukazawa (2nd)

Yanet Gonzalez

1990

Kathy Eng

Ursula Fukazawa

Yanet Gonzalez

Gina Ochs

Joanie Pratt

1991

Kathy Eng

Connie Krzeminski

Kathy Liu (HM)

1992

Kathy Eng

Kathy Liu (2nd)

Tulia Rios (2nd)

Edyta Wrona

1993

Donna King (2nd)

1995

Wendy Gruenewald (2nd)

Lenny Jiminez (2nd)

ALL-JERSEY 9

1990

Kathy Eng

1991

Kathy Eng

Connie Krzeminski

1992

Kathy Eng

1993

Donna King

Clara Ponton

DIVISION II ERA

CENTRAL ATLANTIC

COLLEGIATE CONFERENCE

Newcomer of the Year 2004

Angie Casado

ALL-CACC 2004

Agnieszka Pregowska

DIVISION I ERA

DIVISION I INDEPENDENT

All-Academic

2006

Emese Gyuricza

Agnieszka Pregowska

2007

Sabrina Baby

Katrina Hornstein

Danielle Thompson

2008

Sabrina Baby

Katrina Hornstein

Erica Schultz

D-I INDEPENDENT ALL-STAR

2007

Sabrina Baby (2nd)

Kristy Haeckel (2nd)

Agnieszka Pregowska (2nd)

Erica Schultz (HM)

GREAT WEST CONFERENCE

Defensive Player of the Year

2009

Sabrina Baby

AII-GWC 2009

Sabrina Baby (1st)

Renata Pandolfo (1st)

GWC All-Newcomer 2009

Fernanda Lima

GWC All-Academic 2008

Sabrina Baby

Katrina Hornstein

Erica Schultz

(note: although GWC competition did not begin until 2009-10, the conference began an awards program that included all-academic in 2008-09)

2009

Sabrina Baby

Erica Schultz

Katrina Hornstein

GWC Sportsmanship Award

(all sports)

2009-10

Sabrina Baby

NCAA DIVISION I

INDIVIDUAL DIGS PER SET

2009

(1st year NJIT players are eligible)

Sabrina Baby (national champion)

TEAM DIGS PER SET 2009

(1st year NJIT is eligible)

NJIT (national champion)

ACADEMIC ALL-AMERICA

CoSIDA/ESPN The Magazine

Division I

Sabrina Baby

(national 3rd team; 1st NJIT student-athlete chosen in the Division I era)

P R O G R A M H I S T O R Y

NCAA DIVISION III							
Year	Record	WIAC	IAC	Postseason	Head Coach	Captains	MVP
1982	1-11	—	—	—	Oleg Moiseenko	Heidi Hartung, Becky Miranda	
1983	6-15	—	—	—	Dave DeNure	Heidi Hartung, Becky Miranda	Sharon Ingram
1984	10-5	2nd	—	—	Dave DeNure	Heidi Hartung, Becky Miranda	Becky Miranda
1985	14-6	1st	2nd	—	Dave DeNure	Eileen Begasse, Marilyn Dawson	Marilyn Dawson
1986	24-8	1st	1st	—	Dave DeNure	Marilyn Dawson	Clairie Nicolaou
1987	22-8	2nd	2nd	ECAC semis	Dave DeNure		Clairie Nicolaou
1988	26-6	1st	1st		Dave DeNure	Liz Goldrick, Felicia Mays	Liz Goldrick
1989	15-17	2nd	2nd	—	Dave DeNure	Denise Corsaro	Denise Corsaro
1990	23-12	2nd	2nd	—	Dave DeNure	Kathy Eng	Kathy Eng
1991	10-16	—	—	—	Dave DeNure		Kathy Eng
1992	11-13	2nd	2nd	—	Kerry Keith	Kathy Eng	Kathy Eng
1993	7-20	—	3rd	—	Bob Fordi	Diana Nieto, Bonnie Tai	Donna King
1994	9-14	3rd	2nd	—	Bob Fordi	Lenny Jiminez, Bonnie Tai	Lenny Jiminez
1995	8-19	—	—	—	Bob Fordi	Sandra Caceras	Lenny Jiminez
1996	no team						
1997	no team						

NCAA DIVISION II							
Year	Record			Postseason	Head Coach	Captains	MVP
1998	0-10	NYCAC		—	Jon Bednasz		Melsha Winchester
1999	1-17			—	Jon Bednasz		Melsha Winchester
2000	0-16	CACC		—	Manny Del Rio	Nikiesha Joseph	Carisa Butensky
2001	0-20			—	Anthony Valbrun	Nikeisha Joseph	Marta Oporska
2002	0-18			—	Anthony Valbrun	Eliana Lara, Stacy Waldburger	Chevanese Samms
2003	0-21			—	Pavlina Klimova	Dolores Martinez	Dolores Martinez
2004	13-13			—	Pavlina Klimova	Dolores Martinez	Angie Cosado
2005	9-20			—	Ryan McNeil	Danielle Thompson	Agnieszka Pregowska

NCAA DIVISION I (reclassification years 2006-08)							
Year	Record			Postseason	Head Coach	Captains	MVP
2006	10-21	—		—	Ryan McNeil	Agnieszka Pregowska, Danielle Thompson	Kristy Haeckel
2007	13-24	—		—	Ryan McNeil	Agnieszka Pregowska, Sabrina Baby	Katrina Hornstein
2008	18-16	CWC		—	Ryan McNeil	Agnieszka Pregowska, Sabrina Baby	Katrina Hornstein
2009	17-11			—	JR Martins	Sabrina Baby, Renata Pandolfo	Sabrina Baby

ALL - TIME ROSTER

(First season: 1982; Complete through 2009)

A

APPLEBY, Emma 00,01,02,03
ALMAGRO, Sandy 99
ALVARADO, Karla 91,92,93,94
ALVAREZ, Mildred 92
ARAUJO, Juliana 08 09

B

BABY, Sabrina 06, 07, 08, 09
BAEZ, Aliza 91
BEGASSE, Eileen 83,84,85,88
BERNAL, Marelis 03
BERROA, Beverly 99,00,02
BROWN, Jessica 87
BUTENSKY, Carisa 00,01
BORILLO, Anna 98
BOYADJIS, Theodora 04

C

CACERAS, Sandra 92,93,95
CAMEROTA, Laura 93
CASADO, Angie 04
CHANNER, Rene 95
CHIRINOS, Gladys 98
CHOI, R. 82
CHOY, Yvonne 94,95
CONTALDI, Natalie 85,86
CORSARO, Denise 85,86,88,89
CRAIG, Ashley 04, 05, 07
CRUZ, Iris 91

D

DAWSON, Marilyn 83,84,85,86
DECANDIA, Nicole 01
DELGADO, Paola 93

E

ENG, Cathy 89,90,91,92

F

FERNANDEZ, Alana 99,00
FORTIER, Linda 85,86,87,88
FRANKLIN, Sylvia 88,90
FUKAZAWA, Ursula 87,88,89,90

G

GILL, Victoria 07
GOLDRICK, Elizabeth 85,86,87,88
GOMEZ, Monica 98
GONZALEZ, Claudia 83,84
GONZALEZ, Yanet 87,88,89,90
GRADDY, E. 82,83
GRUENEWALD, Wendy 95
GYURICZA, Emese 06

H

HAECKEL, Kristy 06, 07, 08, 09
HAMILTON, Heather 98
HAROLD, Lynn 85
HARTING, Heidi 82,83,84
HICKS, R. 82,83
HOOGERHYDE, Allison 05
HORNSTEIN, Katrina 06, 07, 08, 09
HUGHES, Baaba 07, 08, 09

I

INGRAM, S. 82,83

J

JIMENEZ, Lenny 93,94,95
JIMENEZ, Vanessa 95
JOSEPH, Nikiesha 98,99,00,01

K

KASEM, Fatima 06
KING, Donna 91,92,93
KING, S. 82

KREHER, Elizabeth 04, 05
KRZEMINSKI, Connie 89,90,91,92
KULKARNI, Sita 03

L

LAGAN, Tara 90
LARA, Eliana 00,01,02
LEE, Diana 82,83,84
LEWIS, Katlyn 07
LIMA, Fernanda 09
LIU, Kathy 88,90,91,92
LOAYZA, Marcie 98,99,00
LOPEZ, Cindy 93,94,95
LORENZETTI, Lisa 92

M

MAHECHA, Luz 03
MARIN, Olga 87
MARTINEZ, Dolores 01,02,03,04
MASSEY, SchrKya 03
MAYS, Felicia 86,87,88,90
MCKENNA, A. 82
MCNAIR, Tamara 95
MENDOZA, Charisma 99
MENESES, Michelle 92
MERCADO, Anna 09
METTLE, Jane 05
MIRANDA, Becky 82,83,84
MONTFERRET, Jennifer 01
MUCHA, M. 82
MULLEN, Veronica 99

N

NAGY, K. 82
NICOLAOU, Claire 85,86,87
NIETO, Diana 91,92,93,95

O

OCHS, Gina 86,87,88,90
O'CONNOR, Kelly 89,90,91
OPORSKA, Marta 01,03, 04, 05



Anna Mercado

P

PACHECO, Patricia 87,88,90
PAGANO, Maria 85,86
PAG, Song Sun 84,85
PAPALEXIOU, Renuska 05
PANDOLFO, Renata 08, 09
PATEL, Sushreeta 95
PICHARDO, Carmen 94,95
PINCAY, Maria 95
POLANSKYJ, Odarka 83,84,85
PONTON, Clara 93,94
PRATT, Joanie 87,88,89,90
PREGOWSKA, Agnieszka 05, 06, 07, 08
PRERADOVICH, Chanelle 08, 09
PROPSNER, J. 82,83

Q

QUINTANILLA, Jackie 05
QUINTERO, Veronica 03

R

RACHER, Sonia 86
RATYCYZ, Nadia 84
RIOS, Tulia 88,89,90,92
RIVERA, Erica 98
RIVERA, H. 82
ROBINSON, Sharae 03
ROJAS, Natalie 03
ROJAS, S. 83
RONQUILLO, R. 82,83
RUSIN, Kasha 04, 05, 07
RYGELIS, Regina 82,85,86

S

SANTOS, Catherine 02
SAMMS, Chevanese 02
SANTANA, Dennise 03
SCHNEIDER, Cindy 84,85
SCHULTZ, Erica 07, 08, 09
SNEED, Brandy 01
SNELL, Audrey 08, 09
SNELL, Janet 09

T

TAI, Bonnie 92,93,94
TALOCCO, Michelle 93,94,95
TANRIKULU, Kubra 04, 06, 07
THOMPSON, Danielle 05, 06, 07, 08
TOMCZAK, Anna 99
TRUCILLO, Gina 86,87,88,89

V

VARGAS, Sharon 02,01

W

WALDBURGER, Stacy 00,01,02
WASHINGTON, Lisa 86
WILKINSON, Rebecca 04, 06, 07
WINCHESTER, Melsha 98,99
WONG, Ileana 83,84
WRONA, Edyta 89,90,91,92
WYKA, Jaculine 00,01

Z

ZACHER, Sonia 85,87,88

Returning players in bold

*Corrections welcome. Please contact
Stephanie Pillari at pillari@njit.edu*



DIVISION I RECORDS

Sets Played—Career

454	Sabrina Baby	2006-09
444	Katrina Hornstein	2006-09
429	Kristy Haeckel	2006-09
331	Erica Schultz	2007-09
274	Agnieszka Pregowska	2006-08

Sets Played—Season

140	Agnieszka Pregowska	2007
140	Sabrina Baby	2007
138	Erica Schultz	2007
136	Katrina Hornstein	2007

Kills—Career

1,035	Katrina Hornstein	2006-09
1,016	Kristy Haeckel	2006-09
691	Renata Pandolfo	2008-pres.
616	Baaba Hughes	2007-pres.
610	Agnieszka Pregowska	2006-08

Kills—Season

357	Katrina Hornstein	2007
352	Kristy Haeckel	2007
348	Renata Pandolfo	2009
343	Renata Pandolfo	2008
341	Agnieszka Pregowska	2007

Assists—Career

2,506	Erica Schlutz	2007-09
1,636	Danielle Thompson	2006-08

Assists—Season

966	Danielle Thompson	2006
887	Erica Schultz	2007
830	Erica Schultz	2008
799	Erica Schultz	2009

Service Aces—Career

192	Sabrina Baby	2006-09
127	Agnieszka Pregowska	2006-08
113	Katrina Hornstein	2006-09
79	Renata Pandolfo	2008-pres.
76	Kristy Haeckel	2006-09

Service Aces—Season

71	Sabrina Baby	2007
57	Sabrina Baby	2006
50	Agnieszka Pregowska	2007
46	Renata Pandolfo	2008
45	Katrina Hornstein	2007
45	Sabrina Baby	2008

Digs—Career

1,927	Sabrina Baby	2006-09
1,215	Katrina Hornstein	2006-09
785	Renata Pandolfo	2008-pres.
552	Kubra Tanrikulu	2006-07

Digs—Season

795	Sabrina Baby	2007
608	Sabrina Baby	2009
542	Sabrina Baby	2008
423	Renata Pandolfo	2008
408	Katrina Hornstein	2007

Total Blocks—Career

289	Kristy Haeckel	2006-09
230	Agnieszka Pregowska	2006-08
139	Rebecca Wilkinson	2006, 2007

Total Blocks—Season

111	Agnieszka Pregowska	2007
86	Kristy Haeckel	2008
85	Rebecca Wilkinson	2007
82	Kristy Haeckel	2006
77	Kristy Haeckel	2007

Total Points—Career

1,272	Kristy Haeckel	2006-09
1,214	Katrina Hornstein	2006-09
1,127	Agnieszka Pregowska	2006-08

Total Points—Season

462	Agnieszka Pregowska	2007
422	Renata Pandolfo	2008
412	Kristy Haeckel	2007
406	Renata Pandolfo	2009
377	Kristy Haeckel	2006

Division I competition only (competition began in 2006 season)

DIVISION I SUPERLATIVES

NJIT

82	vs. Maryland Eastern Shore (11.4.06)
77	vs. Maryland Eastern Shore (11.4.06)
17	vs. Saint Francis (NY) (9.28.07)
124	vs. South Dakota (11.5.09)
9	at South Dakota (10.25.09)
19	at Delaware State (10.21.06)
14	vs. Sacred Heart (10.27.07)
14	vs. Hartford (9.9.06)
95	vs. Maryland Eastern Shore (11.4.06)

TEAM

Kills
Assists
Aces
Digs
Block Solo
Block Assist
Total Blocks
Points

Opponents

85, Seton Hall (9.5.07)
77, Seton Hall (9.5.07)
23, Delaware State (11.10.07)
114, Utah Valley (10.15.09)
9, Delaware State, (11.8.08)
30, Howard (10.27.07)
19, Howard (10.27.07)
105, Columbia (10.29.07)

INDIVIDUALS

Kills

30, Kristy Haeckel vs. Maryland Eastern Shore (5 sets) (11.4.06)
20, Renata Pandolfo vs. South Dakota (4 sets) (11.5.09)
20, Renata Pandolfo vs. FDU (9.2.09)
19, Renata Pandolfo at Chicago State (3 sets) (11.14.09)

Assists

63, Danielle Thompson vs. Maryland Eastern Shore (5 sets) (11.4.06)
49, Danielle Thompson at Delaware State (4 sets) (10.21.06)
42, Erica Schultz vs. Providence (3 sets) (11.21.08)

Aces

8, Sabrina Baby vs. Providence (5 sets) (10.26.07)
6, Kristy Haeckel vs. Manhattan (3 sets) (9.1.06)
6, Sabrina Baby vs. Quinnipiac (3 sets) (10.3.06)
6, Kristy Haeckel vs. Winston-Salem State (3 sets) (10.20.06)
6, Agnieszka Pregowska vs. St. Francis (NY) (9.5.08)
6, Renata Pandolfo vs. St. Francis (NY) (9.5.08)

Digs

42, Sabrina Baby vs. Sacred Heart (5 sets) (10.27.07)
45, Sabrina Baby at South Dakota (4 sets) (11.5.09)
30, Sabrina Baby vs. Manhattan (3 sets) (9.5.09)

Block Solo

7, Agnieszka Pregowska vs. Sacred Heart (5 sets) (10.27.07)

Block Assists

6, Renata Pandolfo vs. American (5 sets) (10.11.08)
7, Kristy Haeckel at Delaware State (4 sets) (10.21.06)

Total Blocks

12, Agnieszka Pregowska vs. Sacred Heart (5 sets) (10.27.07)
9, Kristy Haeckel vs. Hartford (4 sets) (9.9.06)
7, Kristy Haeckel vs. Bryant (3 sets) (11.1.08)

Points

33, Kristy Haeckel vs. Maryland Eastern Shore (5 sets) (11.4.06)
23.5, Kristy Haeckel at Delaware State (4 sets) (10.21.06)
23.5, Katrina Hornstein vs. Utah Valley (4 sets) (9.28.07)
25, Renata Pandolfo at Chicago State (3 sets) (11.14.09)

NATIONAL STATISTICAL LEADERS NCAA



Sabrina Baby

1989 Division III
Yanet Gonzalez – service aces per set

1991 Division III
Kathy Eng – service aces per set

2004 Division II
Angie Casado – ranked 38th in aces per set
Angie Casado – ranked 4th in kills per set

2005 Division II
Agnieszka Pregowska – ranked 4th in kills per set

2009 Division I
Sabrina Baby – National Leader in digs per set (6.27dps)
NJIT – National Team leader in digs per set (19.81dps)



Fernanda Lima

ALL - TIME OPPONENTS

vs. Division I opponents



Audrey Snell



Renata Pandolfo

Akron	1-0
American	0-4
Army	0-4
Bryant	1-0
Bucknell	1-0
Butler	0-1
Cal State-Bakersfield	0-2
Central Connecticut State	1-3
Chicago State	2-1
Columbia	0-4
Coppin State	1-0
Dartmouth	0-2
Delaware State	1-2
Fairfield	0-1
Fairleigh Dickinson	3-3
Fordham	0-1
Georgetown	0-0
Grambling State	1-0
Hartford	3-1

Harvard	0-2
Hofstra	0-2
Holy Cross	0-0
Houston Baptist	2-1
Howard	3-0
Lafayette	2-2
LaSalle	1-0
Lehigh	1-0
Long Island	0-1
Loyola (MD)	0-1
Maine	0-1
Manhattan	3-0
Marist	0-1
Maryland Eastern Shore	0-1
Morgan State	1-1
Navy	0-1
North Dakota	0-2
North Texas	0-1
Oral Roberts	0-1
Providence	3-2
Quinnipiac	3-0
Robert Morris	0-1



Rutgers	0-0
Sacred Heart	3-2
Saint Francis (NY)	5-0
Saint Francis (PA)	1-1
Saint Peter's	2-2
San Francisco	0-1
Seton Hall	1-2
St. John's (NY)	0-1
South Dakota	1-1
Texas-El Paso	0-1
Texas-Pan American	1-2
Tulsa	0-2
Utah Valley	1-3
UMBC	0-2
Virginia Tech	0-2
Wagner	6-0
Winston-Salem State	1-0
Yale	0-1

2010 opponents in bold

NJIT HALL OF FAME

Name	Grad. Year	Contribution	Sport (s)	Years Active	Year of Induction
BAKUN, Andrew I.	1982	Athlete/Asst. Coach	M-Soccer	1978-81/90-91	2005
BAKUN, Myron	1967	Athlete	M-Soccer	1964-66	1991
BARTH, Roland E.	1960	Athlete	M-Fencing	1957-59	2009
			M-Soccer	1956-59	
BAUDER, Fred "Coach"	--	Coach	M-Basketball	1932-61	1989
BLUM, Raymond E.	1950	Distinguished Alumnus	Speedskating/Cycling	--	1996
BORJA, Hernan "Chico"	1981	Athlete	M-Soccer	1977-80	1986
BORNAKO, Gregory "Egor"	1970	Athlete	M-Fencing	1966-70	1987
BOWSER, Hamilton V.	1952	Athlete	M-Fencing	1948-52	1989
BRADLEY, Thomas	1978	Athlete	M-Swimming	1974-78	1990
BROWN, Andrew D.	1963	Athlete	M-Soccer	1956-59	2006
CRIMMINS, David	1952	Athlete	M-Fencing	1948-52	2007
CRUZ, Edward	1963	Athlete	M-Soccer	1959-62	1995
DAWSON, Marilyn E.	1986	Athlete	WVB/WBKB/SB	1982-86	1991
DeNICOLA, Carmine P.	1978	Athlete	Baseball	1975-78	2005
DeNURE, Dave	--	Coach	M-Volleyball	1982-98	2009
			W-Volleyball	1986-90	
			W-Basketball	1987-88	
DeVITO, Louis	1960	Athlete	M-Soccer/M-Fencing	1956-60	1992
DIAS, Joe A.	1977	Athlete	M-Soccer	1973-76	1993
DRURY, Eugene M.	1963	Athlete	M-Tennis	1960-63	1988
ENG, Katherine	1993	Athlete	W-Volleyball	1989-92	2007
ETIENNE, Yves	1979	Athlete	M-Volleyball	1976-78	1990
FEHN, Gilbert F.	1940	Athlete	M-Basketball/M-Tennis	1936-40	1992
FITZGERALD, Joseph M.	--	Coach/Asst. Coach	M-Basketball	1961-66/52-61	1986
FLEISHER, Seymour "Zoom"	1951	Athlete	M-Basketball	1947-51	1992
GAGLIARDO, Salvatore A.	1985	Athlete	M-Basketball	1981-85	1995
GALLAGHER, Thomas G.	1985	Athlete	M-Basketball	1981-85	1991
GIOVANNOLI, Arnold L.	1953	Athlete	M-Basketball	1950-53	1993
GOLDRICK PITT, Elizabeth M.	1990	Athlete	WVB/SB/WBKB/WTen	1985-90	1995
GRAZIANO, Jean M.	1989	Athlete	Softball	1986-89	2009
GRUENEWALD, Wendy A.	1997	Athlete	WBKB/SB/WVB/WSoc	1992-96	2003
HAASE, Jay W.	1975	Athlete	M-Fencing	1971-75	1988
HAMMOND, Kenneth W.	1979	Athlete	M-Soccer	1974-77	2003
HANDWERKER, Andy	1963	Athlete	M-Soccer	1959-62	2002
HAUSSER, Paul C.	--	Administrator	--	1953-91	1990
		Coach	Fencing/Baseball	1954-88/53-72	
HUBEY, Ali	1972	Athlete	M-Soccer	1968-71	1990
HURTADO, Fabian	1975	Athlete	M-Soccer	1970-74	1987
IRIS, Herb	1951	Benefactor	--	--	2007
KAMINSKY, Nicholas J.	1978	Athlete	Baseball	1975-78	2006
KASBARIAN, Raymond P.	1966	Founder/Athlete	Judo	1962-66	1989
KETZNER, Robert Shelby	--	Coach	Rifle	1962-86	1987
KHOWAYLO, Alex	1969	Athlete	M-Soccer	1960-63	1996
LUBETKIN, Charles "Tudy"	1953	Athlete	M-Basketball/M-Track	1949-52	1994
LYNCH, Robert K.	1984	Athlete/Coach	M-Fencing	1977-80/86-91	1993
MacDONALD, Dan	1984	Athlete	Baseball	1981-84	1992
OLSEN, Richard J.	1969	Athlete	M-Basketball	1965-69	1988
OLSON, George R.	1977	Athlete	Baseball	1974-77	1987
PAULIUS, Raymond V.	1985	Athlete	M-Soccer	1980-83	2006
RODGERS, Tarik	1996	Athlete	M-Volleyball	1992-95	2010
ROGERS, Warren	1988	Athlete	M-Basketball	1983-87	1993
ROMULUS, Rudy	1991	Athlete	M-Volleyball	1988-91	1996
ROSS, Jonathan A.	1956	Athlete	M-Soccer	1953-55	2010
SARLO, Paul A.	1992	Athlete	Baseball	1989-91	2005
SCHMID, John "Gene"	--	Asst Coach/Coach	Baseball	1968-72/73-97	2002
SIMON, J. Malcolm	--	Coach	M-Soccer	1955-83	1994
		Director of Athletics	--	1983-94	
SKURLA, Peter J.	1941	Athlete	Bowling	1937-41	1992
SORIANO, Gregory	1975	Athlete	M-Fencing	1968-72	2010
SWANSON, Robert F.	--	Director of Athletics	--	1947-82	1986
TAETZSCH, Robert	1952	Athlete	M-Fencing	1948-52	2007
TAETZSCH, William	1952	Athlete	M-Fencing	1948-52	2007
TOSATO, Lawrence P.	1956	Athlete	M-Basketball/Baseball	1952-56	1987
TUBELLO, Jeffrey	1976	Athlete	Rifle	1972-76	1988
VAN WRIGHT, Nevea	1997	Athlete	W-Basketball	1991-96	2005
WALSH, John J.	1966	Athlete	MSoc/MBKB/Baseball	1962-66	1986
WASNIEWSKI, Frank	1980	Athlete	M-Tennis	1977-80	1990
WELGOS, Bob	1962	Athlete	M-Basketball/Bowling	1959-62	2005
WOROBEC, Myron S.	1966	Athlete	M-Soccer	1962-65	1994
YONEZUKA, Yoshishada	--	Founder/Coach	Judo	1962-?	1991
ZORN, Werner	1962	Athlete	M-Soccer	1958-61	1988

Teams

Year	Accomplishments
1960	NAIA co-National Champion
1981-82	NJIT's first ECAC and IAC champion
1982	NJIT's second ECAC and IAC champion

Year of Induction

1988
1990
1993

DIRECTIONS TO NJIT

FOR GPS USERS

The address for Lubetkin Field at J. Malcolm Simon Stadium and the Estelle and Zoom Fleisher Athletic Center is 80 Lock Street, Newark, NJ, 07102

BY CAR

New Jersey Turnpike: Driving North from South Jersey:

Take NJ Turnpike to Exit 13A Newark Airport. After toll stay to left and follow signs to Rt. 1 & 9 North. You will merge onto Rt. 1 & 9 North. Airport will be on right. Follow signs for downtown Newark and Rt. 21 North-(left lane exit ramp). Downtown Newark will be in front of you. NYC will be off to your right. Follow Rt. 21 North (McCarter Highway). Turn left on Raymond Blvd. Follow Raymond Blvd. past Warren Street traffic light and Fleisher Athletic Center & Lubetkin Field at J. Malcolm Simon Stadium will be to your right (one soccer goal line runs along Warren Street and the soccer sideline parallels Lock Street).

New Jersey Turnpike: Driving South from North Jersey:

Take exit 15W to Route 280 West, then follow Route 280 West directions.

Route 280 West: After drawbridge, take Exit 15A (Rt. 21 South - McCarter Highway). Follow Rt. 21 South to Raymond Blvd. Turn right on Raymond Blvd. Follow Raymond Blvd. past Warren Street traffic light and Fleisher Athletic Center & Lubetkin Field at J. Malcolm Simon Stadium will be to your right (one soccer goal line runs along Warren Street and the soccer sideline parallels Lock Street).

Route 280 East: Take Exit 15 (Rt. 21 South - McCarter Highway). Follow Rt. 21 South to Raymond Blvd. Turn right on Raymond Blvd. Follow Raymond Blvd. past Warren Street traffic light and Fleisher Athletic Center & Lubetkin Field at J. Malcolm Simon Stadium will be to your right (one soccer goal line runs along Warren Street and the soccer sideline parallels Lock Street).

Garden State Parkway (North & South bound):

Take exit 145 to Route 280 East, then follow Route 280 East directions.

Route 1 & 9 North & South: Take exit marked Newark, Rt. 21 North (McCarter Highway). Follow Rt. 21 North (McCarter Highway). Turn left on Raymond Blvd. Follow Raymond Blvd. past Warren Street traffic light and Fleisher Athletic Center & Lubetkin Field at J. Malcolm Simon Stadium will be to your right (one soccer goal line runs along Warren Street and the soccer sideline parallels Lock Street).

Route 78 East: Take Route 78 East to Rt. 21 North. Turn left on Raymond Blvd. Follow Raymond Blvd. past Warren Street traffic light and Fleisher Athletic Center & Lubetkin Field at J. Malcolm Simon Stadium will be to your right (one soccer goal line runs along Warren Street and the soccer sideline parallels Lock Street).

Route 22 East: Take Route 22 East to Route 21 North. Turn left on Raymond Blvd. Follow Raymond Blvd. past Warren Street traffic light and Fleisher Athletic Center & Lubetkin Field at J. Malcolm Simon Stadium will be to your right (one soccer goal line runs along Warren Street and the soccer sideline parallels Lock Street).



Route 21 North: Follow Rt. 21 North to Raymond Blvd. Turn left onto Raymond Blvd. Follow Raymond Blvd. past Warren Street traffic light and Fleisher Athletic Center & Lubetkin Field at J. Malcolm Simon Stadium will be to your right (one soccer goal line runs along Warren Street and the soccer sideline parallels Lock Street).

Route 21 South: Follow Rt. 21 South (McCarter Highway) to Raymond Blvd. Turn Right on Raymond Blvd. Follow Raymond Blvd. past Warren Street traffic light and Fleisher Athletic Center & Lubetkin Field at J. Malcolm Simon Stadium will be to your right (one soccer goal line runs along Warren Street and the soccer sideline parallels Lock Street).

New York Thruway: Thruway to Exit 14A, Garden State Parkway. Follow Garden State Parkway directions above.

George Washington Bridge: NJ Turnpike South to Exit 15W. Follow Route 280 West directions above.

Lincoln Tunnel: West on Rt. 3 to Rt. 21 South. Turn right onto Raymond Blvd. Follow Raymond Blvd. past Warren Street traffic light and Fleisher Athletic Center & Lubetkin Field at J. Malcolm Simon Stadium will be to your right (one soccer goal line runs along Warren Street and the soccer sideline parallels Lock Street).

From Brooklyn, Queens and Long Island: Take Verrazano-Narrows Bridge (Interstate 278) and follow 278 across Staten Island. Cross Goethels Bridge. Follow signs to New Jersey Turnpike North then follow New Jersey Turnpike directions above.

PARKING

Bus/Van Parking: Visiting buses and vans may usually park on Lock Street adjacent to the athletic center. Please be careful not to block the parking space reserved for the doctor.

Visitor Parking: Visitor parking may be reserved in advance through your host. Otherwise, visitor parking at NJIT is available in the NJIT parking deck. Turn right onto Warren Street. Turn right onto Colden Street and proceed around the block to Summit Street. Parking Deck entrance is located to your right before the intersection with Warren Street.

Parking for on-campus athletic contests:

NJIT is offering free off-street parking for fans attending regular season home soccer matches, volleyball games and basketball games. The parking entrance, marked by a sign, is located across Warren Street from the soccer field.

OTHER TRANSPORTATION SYSTEMS

Newark Liberty International Airport: Minutes from the NJIT campus. A minibus (Newark Airlink) or taxi service connects the airport with Penn Station in Newark. Bus, Newark Light Rail, and taxi connections are available at the station.

Newark Penn Station: Located in downtown Newark, connections to the NJIT campus may be made by bus, Newark Light Rail, or taxi.

Morris & Essex Broad Street Station: A five-block walk to the NJIT campus via MLK Boulevard to Central Avenue. Taxi service is also available.

Newark Light Rail: From Penn Station in Newark, take the Warren Street stop for the NJIT campus. The Warren Street stop is on the sidewalk behind the press box for Lubetkin Field at J. Malcolm Simon Stadium.

OFFICIAL HOTEL OF THE HIGHLANDERS

SpringHill Suites Newark Liberty International Airport

652 Route 1 & 9 South, Newark, NJ
973/624-5300 (ask for Melanie Schellhas)
ASK FOR SPECIAL NJIT HIGHLANDERS RATE
(discount code NJIS for kings, NJIT for doubles)

DOWNTOWN

Hilton Newark Gateway

Gateway Center, Raymond Boulevard & McCarter Highway
Newark, NJ, 973/622-5000

Robert Treat Hotel

50 Park Place, Newark, NJ, 973/622-1900

Hampton Inn & Suites Newark Riverwalk

100 Passaic Ave, Harrison, NJ, 973/483-1900

NEAR NEWARK LIBERTY INTERNATIONAL AIRPORT

Best Western Newark Airport West

101 International Way, Newark, NJ, 973/621-6200

Hilton Newark Airport

1170 Spring Street, Elizabeth, NJ, 908/351-3900

Holiday Inn Newark Liberty International Airport

160 Frontage Road, Newark, NJ, 973/589-1000

G R E A T W E S T C O N F E R E N C E



NJIT's first multi-sport conference affiliation at the Division I level, came when the Highlanders aligned with the Great West Conference, which began play as an expanded multi-sport conference in 2009-10.

Member schools are spread over seven states and four time zones, giving each school added exposure in new destinations. The conference, which began as a football-only league, took a giant leap in the collegiate athletic world with expansion to include a full range of sports and new members.

Joining the league in July 2008 were: Houston Baptist, NJIT, North Dakota, South Dakota, Texas-Pan American and Utah Valley. Chicago State accepted the league's invitation to join in October 2008. These seven schools joined football-only members Cal Poly, UC Davis and Southern Utah.

As the conference began planning for multi-team sport competition, several teams were added in women's soccer and baseball to help provide a more diverse and competitive field. Delaware State, Howard and South Carolina State joined as associate members in women's soccer and they formed the East Division, along with NJIT. Northern Colorado and New York Institute of Technology joined as associate members in baseball, while Seattle was added as an associate member in cross country and track and field.

NJIT, Texas-Pan American and Utah Valley had been playing each other in multiple sports, including home-and-home games in men's and women's basketball, since NJIT began Division I competition for the first time in 2006-07.

NJIT and Utah Valley completed their NCAA reclassification and became championship-eligible members of NCAA Division I in September. Houston Baptist announced an agreement with the NCAA that can make HBU an active member of Division I in 2011-12 and North Dakota and South Dakota will be active members of Division I in 2012-13. Texas-Pan American and Chicago State have

been active Division I programs for many years.

The expanded conference is not an automatic NCAA Division I championship postseason qualifier, but it offers the benefit of conference championship competition, stable scheduling opportunities and individual recognition for student-athletes through weekly and season all-conference recognition.

The champion of the Great West Conference men's basketball postseason tournament (hosted in 2011 by Utah Valley) receives an automatic bid into the CollegeInsider.com Tournament (CIT) a 16-team national postseason tournament won by Old Dominion in 2009 and Missouri State in 2010 in a game that was televised nationally on Fox College Sports.

Governance of the GWC remains primarily with the member institutions. Each member institution is represented on the President's Council by its CEO. General operations and management of the Conference is conducted by the Joint Council, comprised of Directors of Athletics and Senior Woman Administrators.

NJIT's sports that compete in championships sponsored by the Great West Conference are: baseball, basketball (men's and women's); cross country (men's and women's); track and field (men's and women's; indoor and outdoor); women's tennis; and, women's volleyball.

Two NJIT sports that do not come under the Great West umbrella continue in their existing conferences—men's soccer in the Atlantic Soccer Conference and men's volleyball in the Eastern Intercollegiate Volleyball Association, which has an automatic NCAA postseason berth, claimed in 2008 by eventual national champion Penn State.

The latest conference news and information is available on-line at <http://www.greatwestconference.org/>.

CONFERENCE ADMINISTRATIVE OFFICE

Ed Grom, Commissioner; Phone: (630) 428-4492; E-Mail: grom@gwconference.org

Mike Sharpe, Assistant Commissioner; Phone: (816) 210-4305; E-Mail: sharp@gwconference.org

Jacque Cottrell, Director of Media Relations (SWA); Phone: (713) 305-8614; E-Mail: cottrell@gwconference.org

Cliff Martin, Media Relations Assistant; Phone: (214) 770-6463; E-mail: martin@gwconference.org



2010 HIGHLANDERS WOMEN'S VOLLEYBALL

Back Row (l-r): Head Coach JR Martins, Anna Mercado, Fernanda Lima, Gretchen VonKoenig, Valerie Carroll,
 Julia Colombo, Janet Snell, Graduate Assistant Rodrigo Correa

Front Row (l-r): Carly Ziemer, Catherine Leung, Renata Pandolfo, Audrey Snell, Baaba Hughes, Katie Bartlett, Juliana Araujo

2010 HIGHLANDERS WOMEN'S VOLLEYBALL

Aug. 27	at St. Francis (NY)	Oct. 5	at Lafayette
Aug. 28	vs. St. Peters (at St. Francis NY)	Oct. 7	SETON HALL
Sept. 1	at Fairleigh Dickinson	Oct. 12	at Hofstra
Sept. 4	vs. Marist ^	Oct. 14	at Sacred Heart
	vs. Holy Cross ^	Oct. 21	NORTH DAKOTA *
Sept. 7	RUTGERS	Oct. 23	SOUTH DAKOTA *
Sept. 10	vs. Yale +	Oct. 28	at Houston Baptist *
Sept. 11	Long Island +	Oct. 30	at Texas-Pan American
	Georgetown +	Nov. 4	at South Dakota *
Sept. 16	at Utah Valley *	Nov. 6	at North Dakota *
Sept. 18	at Chicago State *	Nov. 11	UTAH VALLEY *
Sept. 23	TEXAS-PAN AMERICAN *	Nov. 19-21	Great West Conference
Sept. 25	HOUSTON BAPTIST *		Championships at Chicago State
Oct. 2	CHICAGO STATE *		

* Indicates Great West Conference Game

^ Indicates Marist Tournament, Poughkeepsie, NY

+ Indicates Long Island Tournament, Brooklyn, NY

Home matches in **BOLD CAPS** played at Estelle and Zoom Fleisher Athletic Center

