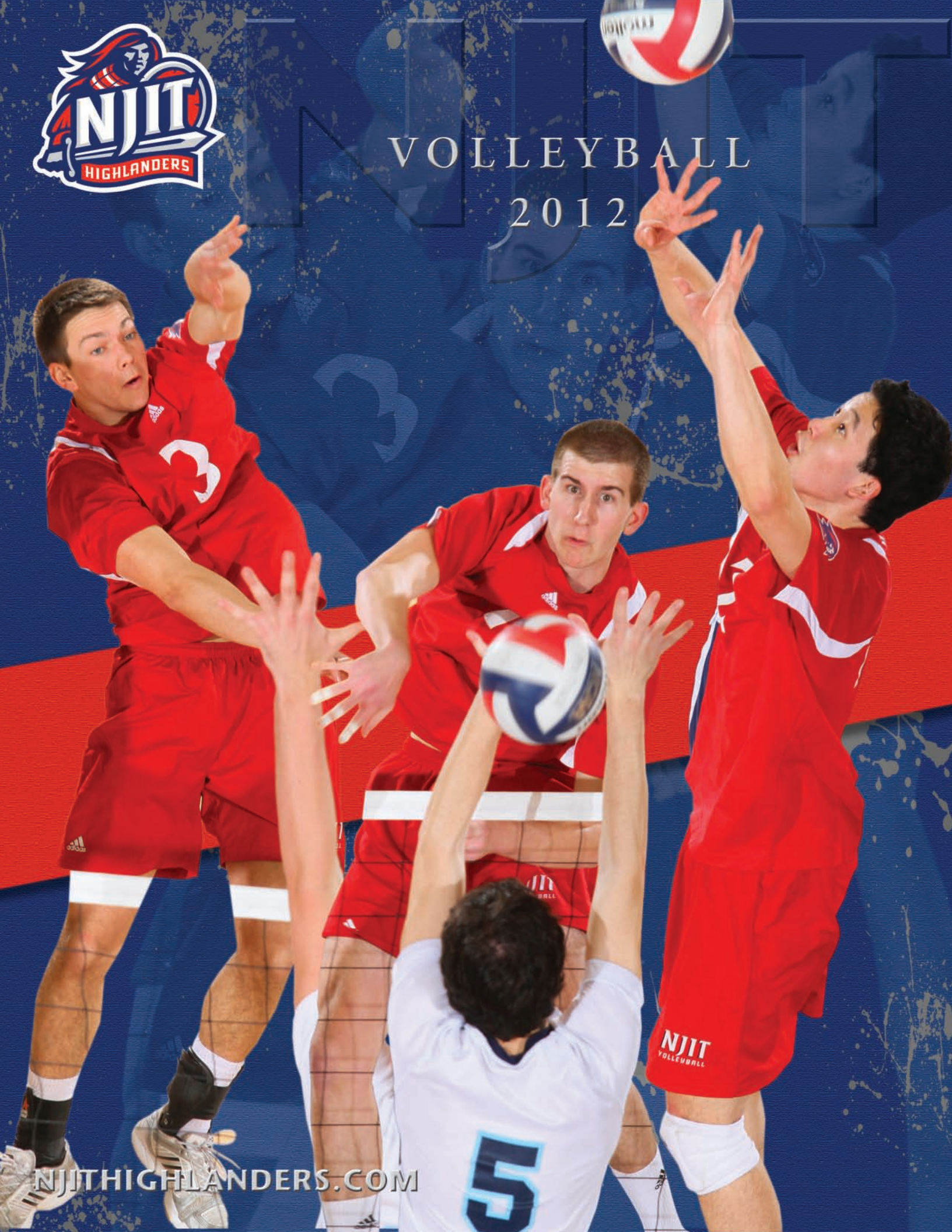




# VOLLEYBALL

## 2012



[NJITHIGHLANDERS.COM](http://NJITHIGHLANDERS.COM)







# NEW JERSEY INSTITUTE OF TECHNOLOGY

About NJIT .....	2-3
University Administration .....	4-5
Student-athlete support .....	6-7
Athletics Senior Staff .....	7
NJIT in Division I .....	8-9
Head Coach Ryan McNeil .....	10
Assistant Coaches .....	11
Roster .....	12
2011 Statistics .....	13
Program History .....	14
All-Americans/Academic All-Americans .....	15
Athletics Facilities .....	16-18
About Newark .....	19
Sports & Entertainment Around Newark .....	20-21
Great West Conference .....	22
Hall of Fame .....	24
Directions to NJIT .....	24

## MEDIA INFORMATION

This guide is designed to assist in coverage of NJIT men's volleyball. For home games, the NJIT sports information office will provide official box score 10 minutes following each game. Coach Ryan McNeil and requested players will be available for interviews on the basement level of Fleisher Athletic Center following a 10-minute cooling-off period. Radio broadcast requests should be made at least 10 business days prior to the contest.

Requests for coach and player interviews on non-game days should be made through the NJIT sports information office (973-596-8461).

## CREDITS

The 2012 NJIT Men's Volleyball Media Guide is a production of the NJIT Sports Information Office in cooperation with the Office of Strategic Communications. Written and edited by Tim Camp and Stephanie Pillari. Cover and interior design by Karyn Olsen Designs. NJIT photographs and information courtesy of Office of Strategic Communications. All interior team and action photography by Larry Levanti. Red Bull Arena photo (p. 21) courtesy of Getty Images/RBNY.

## WHY THE HIGHLANDERS?

The home of NJIT, University Heights, was formerly known as the Newark Highlands and NJIT's mailing address used to be High Street, until the thoroughfare was renamed in memory of Dr. Martin Luther King, Jr.



In 2006-07, NJIT athletics, in keeping with its move to NCAA Division I, unveiled a new graphic identity, which includes a new Highlanders logo (shown). Developed by CN Foundry for NJIT, the logo depicts the traditional Highlander, whose ferocity and bravery against all odds are the stuff of legend.

## QUICK FACTS

**Location:** University Heights, Newark, NJ

**Founded:** 1881

**Enrollment:** 5,924 (undergraduate)

**NJIT website:** [www.njit.edu](http://www.njit.edu)

**Nickname:** Highlanders

**Colors:** Highlanders/Red and White (Blue accent)

**Home Court (capacity):** Estelle and Zoom Fleisher Athletic Center (1,500)

**Affiliations:** NCAA Division I, ECAC

**Conference:** Eastern Intercollegiate Volleyball Association

**President:** Joel Bloom, EdD

**Director of Athletics:** Lenny Kaplan

**Athletic Department Phone:** 973-596-3636

## Sports Information

**NJIT Athletics website:** [www.njithighlanders.com](http://www.njithighlanders.com)

**Results hotline:** 973-596-5555

**Assistant AD for Sports Information:** Tim Camp

**Phone/Email:** 973-596-8461/[timothy.camp@njit.edu](mailto:timothy.camp@njit.edu)

**Assistant SID:** Stephanie Pillari

**Phone/Email:** 973-596-8324/[pillari@njit.edu](mailto:pillari@njit.edu)

## Volleyball

**Head Coach (alma mater, year):** Ryan McNeil (Lewis '01)

**Phone/Email:** 973-596-6498; [mcneil@njit.edu](mailto:mcneil@njit.edu)

**Career Record:** 76-131 (7 years, NJIT men)

**Assistant Coaches:** Rodrigo Correa, Christianssen Siddayao

**2011 overall/conference (finish):** 7-21, 1-7 (T-4th)

**On the cover:** (left to right): Adam Gustafson; Kevin Van Oss; Brady Smith

**Inside back cover:** 2012 Volleyball team



# ABOUT NJIT

**NJIT is New Jersey's Science & Technology University. With roots going back to 1881, when it was founded as Newark Technical School, New Jersey Institute of Technology observed its 125th anniversary in 2006.**

Located in University Heights, Newark, NJ, home to more than 30,000 college students, NJIT's campus is just 10 miles from New York City.

Playing a critical role in shaping New Jersey's future, NJIT, as a major public technological university, is an important pipeline for the flow of technology into society. The university's educational programs prepare students to be leaders in the technology-dependent economy of the 21st century. University researchers seek new knowledge to improve processes and products for industry. Through public and private partnerships and economic development efforts, the university helps to grow new business ventures that fuel the economy.

In recent years, NJIT has put more than \$83 million toward new and improved buildings and facilities on the 45-acre campus, including biomedical engineering labs and a campus center.

## Instructional Programs

NJIT offers an ever-expanding array of educational programs. As of 2011, NJIT lists 57 bachelor's degree majors, 57 master's degree programs and 21 doctoral programs -- through six schools: — through six schools:



**Newark College of Engineering  
College of Architecture and Design  
College of Science and Liberal Arts  
School of Management  
Albert Dorman Honors College  
College of Computing Sciences**

NJIT has over 400 full-time faculty; more than 98 percent of whom hold the highest degree in their field. The student-faculty ratio is 13:1, with over 6,000 undergraduate students and nearly 3,000 graduate students. Our students hail from more than 30 states and more than 100 countries to rank eighth in the nation for diversity.

Albert Dorman Honors College enrolls more than 500 students who take advantage of honors courses, research opportunities, advising and mentoring. Honors College students have SAT scores ranking in the top 10 percent nationally.

With more than 44,000 alumni, NJIT is rated by *US News and World Report* as a top-tier national research university offering bachelor's, master's and doctoral degrees. In the 2010 edition of *US News and World Report's* Annual Guide to America's Best Colleges, NJIT ranked 115 among

the nation's best national universities. It was NJIT's fifth consecutive year on the top tier list.

NJIT was named by *The Princeton Review* as one of the country's best 376 institutions for undergraduate education in the annual college guide for 2012 and on *PrincetonReview.com* one of 220 "best" institutions in the Northeast. Only 15 percent of America's 2,500 four-year colleges and three colleges outside the USA are profiled in the book, which profiles and rates schools.

## Research

In 2009, NJIT's research expenditures topped \$92 million and faculty members welcome student collaboration on research projects.

## Economic Development

NJIT is committed to economic development for Newark and the region. The university operates several outreach centers that provide direct technical assistance to the state's businesses with the goal of helping small and medium-sized companies. NJIT is also the home of New Jersey's oldest and largest incubator facility, and was one of the first institutions in the nation to adopt economic development as a fourth mission element, together with instruction, research and community service. More than 60 technology start-up companies, many of which hire NJIT students, are on campus.

## The Career Edge

NJIT offers degrees in nine of the 11 "most wanted" degrees in '11, according to the National Association of Colleges and Employers, which conducts annual surveys of businesses to track hiring expectations. The average starting salary offers for the top 11 fields in the 2011 survey ranges from over \$46,000 to a high of over \$63,000 (for computer science majors).

Computer and data processing services lead the list of the 10 fastest-growing occupations in projections compiled by the US Department of Labor.

As technology changes all fields, those with science and technology backgrounds are positioned to lead. Among the CEOs of the S&P 500 companies, engineering is the single





# ABOUT NJIT

largest undergraduate degree and more than half of CEOs have undergraduate degrees in engineering, business management, science, math and computing.

## The Global Edge

The diversity in NJIT's student body and faculty prepares graduates to understand and succeed in the global marketplace. NJIT was named among the world's top 500 universities in a study by the Institute of Higher Education, Shanghai Jiao Tong University.

## The Technology Edge

NJIT has been designated one of the nation's most technologically sophisticated universities by Forbes.com and a Princeton Review survey and the university has received major funding from the National Science Foundation and the National Security Agency in recent years.

## The Academic Edge

NJIT has long been a national leader in applying new technologies and approaches to the educational experience. NJIT was a pioneer in requiring computer science for students in all majors and the School of Architecture has led innovations in teaching CAD and digital design. The school's innovative "paperless" first-year program was recently cited by Campus Technology Magazine.

Students have a wide range of educational choices in building an interest-tailored program. Among their options are cross-enrolling at neighboring Rutgers to enrich their program with subjects such as music and languages.

NJIT students learn emerging technologies from the researchers behind the technologies, developing valuable marketplace skills. Real-world experience through experiential learning makes graduates more marketable, with many co-op opportunities leading to permanent jobs.

## The Regional Edge

New Jersey, with America's highest concentration of pharmaceutical, hi-tech, biotech, and medical device companies is the place



to study technology. It has the nation's highest per capita number of engineers and scientists as residents, while also leading in per capita rate of patents issued. Further, the Newark-New York region is a living laboratory for architecture and building sciences, environmental engineering and transportation.

## The Research Edge

NJIT has been designated by the State of New Jersey as the Homeland Security Technology Systems Center and NJIT operates the world-renowned Big Bear Solar Observatory.

## A History of NJIT

From the Industrial Revolution to the Information Age, New Jersey Institute of Technology has a rich history with its beginnings developing from the industrial age.

In 1881, an act of the New Jersey State Legislature, recognizing an urgent need, sought a home for what would be the state's technical school. The efforts of Newark's public and private sectors resulted with

the opening of Newark Technical School, addressing the state's need.

Over time, the university expanded its curriculum and mission. In 1919, the university established baccalaureate programs in three engineering fields. By the middle of the 20th century, Newark Technical School was transformed into the robust Newark College of Engineering.

The post-war period was one of enormous activity with regular expansion of the campus, as well as the introduction of doctoral level programs. In 1975, with the addition of the New Jersey School of Architecture, the institution had evolved into a technological university, emphasizing a broad range of degrees and dedication to significant research and public service. Newark College of Engineering, stronger than ever, remained intact, but a new university name -- New Jersey Institute of Technology -- reflected the institution's expanded mission.

A broadened mission called for the creation of a residential campus and the opening of NJIT's first dormitory in 1980 began a period of steady growth that continues. Two new schools were established during the 1980s--the College of Science and Liberal Arts (1982) and the School of Industrial Management (1988). The Albert Dorman Honors College was established in 1994, and the newest school, the College of Computing Sciences, was created in 2001. Beginning in 2009 the College of Architecture and Design was created to house the New Jersey School of Architecture and the new school of Art and Design.







**Dr. Joel Bloom**  
*President*

On January 9, 2012, the New Jersey Institute of Technology Board of Trustees voted unanimously to appoint Dr. Joel Bloom as President of the University, effective immediately.

Dr. Bloom, had been serving as Interim President of NJIT since September 28, 2011, following the resignation of the previous president, Robert A. Altenkirch, who had been in that post since July 2002.

Speaking for the NJIT Board of Trustees, Kathleen Wielkopolski said: "It is in the best interest of the university to appoint a president at the earliest possible date to provide stability and continuity to the important work of the university; that is, educating New Jersey's future science and technology leaders, responding to opportunities presented by the governor for workforce and economic development, building NJIT's national academic and research reputation, and proceeding with our ongoing significant fund raising initiatives, specifically, the \$150 million 'NJIT NEXT' campaign."

Bloom, who is NJIT Vice President for Academic and Student Services, as well as founding dean of the Albert Dorman Honors College, is well-positioned to take on this leadership role. Bloom, with a career spanning 20 years at NJIT, is passionate about the university and its students as their education in the sciences, engineering, technology, design and management transforms their future and that of their families.

As Vice President for Academic and Student Services, Dr. Bloom is responsible for eight divisions of the university, including physical education and athletics. In that role, his guidance has been vital in NJIT's transition in intercollegiate athletics to NCAA Division I from Division II, an endeavor that began in earnest following November 2002 discussions among Dr. Bloom, then-President Altenkirch, and Director of Athletics Lenny Kaplan. The transition reached official fruition on September 1, 2009, when the NCAA embraced NJIT as an across-the-board active (full) member of

Division I following completion of a rigorous formal process.

Bloom's impact on the university has been significant. Under his watch, student enrollment increased from 7,600 to over 9,500 students, including increases in female and minority students. The average SAT math score is now in the top quarter nationally; Dorman Honors College enrollment increased 70 percent, totaling 685 with combined average SAT scores over 1335 for fall 2011; articulation agreements are currently signed with the state's high-tech high schools and 19 county colleges; and accelerated joint admission agreements exist with UMDNJ Medical and Dental Schools, St. George's Medical School, SUNY College of Optometry and Seton Hall Law School.

In his role as dean of the Dorman Honors College and Vice President for Student and Academic Services, Bloom has been integral in helping to shape the academic plan for the university. Further, Bloom is leading the development of a Dorman Residential Honors College and the planning for a Greek Village in collaboration with Greek alumni and currently enrolled students. Previously, Bloom led the successful effort to raise \$23M for Dorman Honors College scholarships.

Bloom expanded the Center for Pre-College Programs to help prepare students for the rigors of science, mathematics, engineering and technology education; with the college deans and faculty, he expanded honors courses and undergraduate research, established the university's medical and health committee of faculty to advise and assist undergraduate students entry into graduate and professional schools and to coordinate the health-related NJIT disciplines; he increased retention and graduation rates, and planned residence halls that transformed a commuter campus to one with more than 50 percent of the freshmen living on campus.

As the university proceeds to implement a major comprehensive fundraising campaign, "Dr. Bloom brings an understanding of the university, its history and contacts, and will provide the necessary continuity needed at this time," said Trustee Wielkopolski.

Bloom has served the Newark community through his participation in the development of Science Park High School. He has also initiated multiple programs with the Newark Public

Schools, most recently with the new Central High School—yielding the largest number of enrolled NJIT freshmen from the school. For over a decade, he has served as vice chair of the board for Community and Schools, a national dropout prevention program serving Newark and other urban school districts. He is active in many education organizations including The NJ Presidents' Council Executive Board for New Jersey Edgnet and the executive board of the NSF-funded Philadelphia Alliance for Minority Participation.

He has received national and state education awards, as well as federal, foundation and corporate grant awards. He has published journal articles and presented papers on school improvement, curriculum development, college transition and student assessment.

Prior to joining NJIT, Bloom served seven years as an assistant commissioner for the New Jersey Department of Education for the Division of General Academic Education. He was responsible for managing many of the education department's initiatives during Governor Thomas Kean's administration and was responsible for statewide assessment, curriculum standards, math/science/technology education, and the improvement of urban education through piloting the Effective Schools research and Alternative Education programs.

Formerly a teacher and school administrator in New York City Public Schools, Dr. Bloom was also a director of research and instructor at Teacher's College, Columbia University.

He holds a master's degree and a doctorate from Teacher's College, Columbia University. He also earned master's and bachelor's degrees from Hunter College of the City University of New York.

Upon becoming Interim President, Dr. Bloom announced that Jack Gentul, Dean of Students, will serve as Interim Vice President for Academic and Student Services and that Distinguished Professor of Electrical and Computer Engineering, Atam Dhawan, currently the Associate Dean of the Albert Dorman Honors College, will become the Interim Dean.





**Jack Gentul**  
*Interim Vice President  
for Academic and  
Student Services*

When Dr. Joel Bloom was named Interim President of NJIT in late September 2011, he turned to veteran administrator Jack

Gentul, the Dean of Students, to fill the role of Interim Vice President for Academic and Student Services.

The Dean of Students at NJIT since 2001, Jack Gentul has a career of more than 30 years in the field of student affairs. After graduating from Binghamton University in 1973 with a degree in theater, he attended Rutgers University, where he received a master's in education in 1979. While doing his graduate work at Rutgers, Gentul worked in both the Dean of Students office and in residence life.

His first professional job was at Rutgers as Livingston Towers Coordinator and Assistant to the Dean for Handicapped Affairs. From Rutgers, he moved to Trenton State College (now the College of New Jersey) where he served as a Residence Area Coordinator from 1980 to 1982.

He next moved to Upsala College in East Orange, NJ, where he served as Assistant Dean for Residence Life. After Upsala, Gentul became the founding Director of the Center for Students with Disabilities at New York University in 1983 and later became the Associate Director of Student Life for NYU. During his stay at NYU, he earned a PhD in Higher Education Administration from the school in 1997.

He was selected in 1999 as Dean for Students at Pace University, Westchester, a position he held until coming to NJIT to serve as Dean of Students at NJIT in 2001.

Two of his children, daughter Adrienne, and son Walker are intercollegiate athletes. Adrienne, who swam and played soccer in high school, was a three-year member of the crew team at Lehigh University. Walker, who played soccer and ran track in high school, is on the track team at Springfield College. Another son, Alex, is completing a graduate degree in education at Rutgers, while son Robert is a student at NYU and is organizing an ultimate frisbee club there.



**Lenny Kaplan**  
*Director of Athletics*

Since taking over as head of NJIT's division of physical education and athletics in August 2000, Lenny Kaplan has been

instrumental in guiding NJIT's reclassification to NCAA Division I.

Kaplan helped stabilize and expand a program that was entering its fourth year in Division II when he arrived in Newark. In late 2002, after discussions with university President Dr. Robert A. Altenkirch and Vice President Dr. Joel Bloom, Kaplan took on the task of steering NJIT's programs into Division I, a process that reached fruition with the NCAA's granting active Division I status, with full championship eligibility effective September 1, 2009.

Throughout Kaplan's tenure, NJIT has enhanced the athletics program, particularly in areas that benefit the student-athletes directly.

The sports offerings have expanded to the current 18 varsity programs. And since 2004, NJIT has renovated its two main on-campus venues—Lubetkin Field at J. Malcolm Simon Stadium at Lubetkin Field and the Estelle and Zoom Fleisher Athletic Center. Further, the Naimoli Family Recreation Center, a 25,600-square foot facility opened early in 2011 enhanced the recreational and intercollegiate opportunities on campus.

The school also signed a 10-year partnership to play all home baseball in the professional Bears and Eagles Riverfront Stadium and later agreed to host basketball in the new Prudential Center, downtown Newark home of the NHL's New Jersey Devils.

Under Kaplan's leadership, many teams achieved regional and national Division II ranking. Success for several women's teams was unprecedented, with basketball, tennis and soccer all reaching postseason play for the first time in his administration,

Additionally, men's volleyball captured a 2007 divisional championship in the Eastern Intercollegiate Volleyball Association and the next year reached the EIVA playoff semifinals

hosted by eventual 2008 national champion Penn State.

Kaplan guided the Highlanders toward further stability with membership in the newly-expanded all-sports Great West Conference, which offers a conference home for 11 of NJIT's varsity sports.

In 2009-10, NJIT's first year as a full active member of Division I, the women's volleyball team and senior Sabrina Baby became the school's first national statistical champions at the Division I level, as team and individual leaders, respectively, digs per set. Baby was honored as the school's first CoSIDA Academic All-America in the Division I era, earning third-team national honors.

Christian Baumbach, a sophomore at the time, made history in 2009 as NJIT's first individual conference champion at the Division I level, when he won the Great West Conference men's cross country race. He also won the prestigious IC4A University Division race in the 101st annual running of that contest.

In 2010-11, the Highlanders earned their first-ever Division I conference team championship when women's tennis captured the Great West title in May.

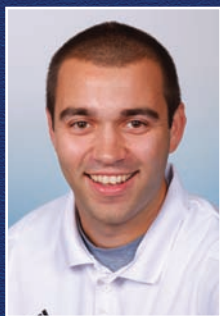
NJIT's outstanding home facilities will allow it to host conference championships in the Great West Conference and allowed it to host ECAC postseason championships in 2005-06.

Before coming to NJIT, Lenny Kaplan served 11 years at Manhattan College, where he began as Manhattan's director of operations and was assistant athletics director from 1991-2000.

Kaplan, a 1988 graduate of St. John's University with a degree in athletics administration, resides in Merrick, NY, with his wife, Nancy, and their sons, Michael and Joshua.



# STUDENT-ATHLETE SUPPORT



**Matt Koscs**



**Paul Grayner**



**Sandra Brendle**

## Sports Medicine

NJIT sports medicine is moving forward with expanded facilities and a staff of three full-time trainers led by head trainer Matt Koscs, MS/ATC, with assistant trainers Paul Grayner, MEd/ATC, and Sandra Brendle, MSED/ATC. They work with team physicians Louis Rizio, MD, and Stephen Matta, DO.

*Matt Koscs*, who earned both his bachelor's and master's degrees from the University of Delaware, has served NJIT as head trainer since July 2009, a year after he joined the staff as an assistant trainer. As an undergrad at Delaware, he was recipient of the Paris Delligatti Memorial Award for Excellence in Athletic Training.

Prior to NJIT, he served three years as head trainer at Hodgson Vocational Technical High School in Newark, DE. He also worked with soccer clubs in Delaware and was employed at Christiana Care Physical Therapy Plus, in Newark, DE.

*Paul Grayner*, who holds a bachelor's degree from Saint Leo College in Florida and a master's from American University in Washington, DC, has a diverse background in athletic training, having served at the college and professional levels, as well as in a fitness center setting. He joined the NJIT staff late in 2008.

From the mid-1970s to the mid-1980s, he was a trainer in the minor league systems of the New York Yankees and New York Mets and in 1984 he was assistant trainer with the Mets. He later worked with the Long Island Knights professional basketball team.

Adelphi and FDU.

*Sandra Brendle*, who joined the NJIT staff as an assistant trainer in the summer of 2009, earned her bachelor's degree, majoring in athletic training, from Greensboro (NC) College in 2007. She earned her master's in athletic training at Old Dominion University in May 2009. At ODU, she worked with seven teams and was on the medical staff for the 2008 NCAA Division I Women's Basketball Tournament first and second rounds. At Greensboro, she was 2006 Athletic Training Student of the Year and worked on the 2004 NCAA Division III Men's and Women's Soccer Championship tournament medical staff.

*Dr. Louis Rizio* is a board certified orthopedic surgeon and is fellowship trained in the field of sports medicine. He is a graduate of Rutgers and after earning his medical degree from the UMDNJ/New Jersey Medical School, Dr. Rizio completed his orthopedic residency at Tufts University in Boston.

He then completed a sports medicine fellowship at the University of Miami and was assistant team physician of the Hurricanes, as well as the Miami Dolphins, the Miami Hurricanes.

Dr. Rizio practices at the New Jersey Sports Medicine Institute in Livingston, NJ. Prior to starting his own practice, Dr. Rizio was the Chief of Sports Medicine at the NJ Medical School from 2000-2005. He is affiliated with four New Jersey hospitals: St. Barnabas Medical Center (Livingston); Short Hills Medical Center (Short Hills); Mountainside Hospital (Montclair); and, Overlook Hospital (Summit).

At the collegiate level, he was head trainer at Fairleigh Dickinson University in Teaneck, NJ from 1989 to 1998 and earlier worked as an assistant trainer at Hofstra,

*Dr. Stephen Matta*, who is board certified in family medicine, currently specializes in primary care sports medicine at Mountainside Hospital in Montclair, NJ, a post he assumed after three years in the family practice residency program at Valley Baptist Medical Center in Harlingen, TX. He is a 2007 graduate of a five-year DO/MBA dual degree program with Philadelphia College of Osteopathic Medicine for his medical degree and Saint Joseph's University for an MBA in healthcare administration. He is a 2002 magna cum laude graduate of Duquesne University in Pittsburgh, with a BS in honors chemistry. He and his family reside in Belleville, NJ.

## Strength and Conditioning

Strength and conditioning is a key part of a successful Division I program, with an eye toward maximizing individual and team performance in competition. The strength and conditioning coach also works closely with the Athletic Training Staff

in the areas of injury prevention and injury rehabilitation.



**Dan Huff**

The 2008-09 year brought another dimension to NJIT athletics with the hiring of *Dan Huff*, CSCS, as the program's first full-time strength and conditioning coach.

In addition to the hiring of a full-time coach to coordinate the strength and conditioning, NJIT renovated the weight rooms and purchased new equipment, with the area dedicated to use by the Highlander teams.

Huff previously served five years as strength and conditioning coordinator at Fairleigh Dickinson University in Teaneck, NJ, from 2003 to 2008, working with an 18-sport NCAA Division I program.

Huff was Sports Performance Director for Velocity Sports Performance in Wall, NJ, immediately before accepting his position at



## STUDENT-ATHLETE SUPPORT

NJIT. He is a graduate of William Paterson University of New Jersey. He holds numerous certifications.

### Academic Enrichment

NJIT's Center for Academic and Personal Enrichment (CAPE) added a new component in 2007 with the addition of an Associate Director position that was created for the specific purpose of serving the needs of NJIT's student-athletes.

The position focuses on five key areas: academic support, career development, personal development, leadership and community service including the Student-Athlete Advisory Committee and CHAMPS Life Skills for NJIT's nearly 300 student-athletes.

*Sandra Taylor* filled the post in January 2010, having previously spent her professional career at Manhattan College, which is also her alma mater.

Working at Manhattan, a founding member of the Metro Atlantic Athletic Conference, Taylor was most recently Associate Director of Athletics and Senior Woman Administrator, filling those posts from 1996 to 2010.

For much of that time (1995-2003), she was Chief Athletic Department Compliance Officer. She began her service at Manhattan as Athletic Department Ticket Manager, serving in that capacity from 1993 to 2003.



**Sandra Taylor**

She served on numerous NCAA, conference and internal college committees, including service on the NCAA Division I Management Council from 2004 to 2007 and as chair of the NCAA Women's Lacrosse Committee from 2002 to 2006.

She earned both her bachelor's degree in secondary education and her master's degree in special education from Manhattan College and is a doctoral candidate in educational leadership at St. Mary's University in Winona, MN.

Sandra and her husband, Ken, who is Associate Commissioner for Men's Basketball and Baseball at the MAAC, reside in Monroe Township, NJ, with their daughters, Katherine, who was born in May 2004, and Samantha, who was born in July 2009.

New to the staff in 2011-12 is *Elizabeth Bookwalter*, the eligibility certification officer/academic advisor, who brings a wealth of experience to her post at NJIT.



**Elizabeth Bookwalter**

Most recently before coming to NJIT, she worked from March 2009 to 2011 in the NCAA Eligibility Center as Associate Director of Client Relations/Coordinator of Customer Service.

She is a journalism graduate of The Ohio State University and she earned her master's degree from the University of Tennessee with a concentration in sport management.

At Ohio State, she was a student intern in the Athletic Communications Office and she was a graduate assistant for compliance at Tennessee, while also working as a project leader/project assistant for the legal firm Vorys, Sater, Seymour and Pease, LLP.

She began full-time work in NCAA compliance at American University in Washington, DC, in 2006, before joining the compliance office at Florida State University, where she served from September 2006 to March 2009.

NJIT's Center for Academic and Personal Enrichment, headed by Dr. Marybeth Boger, is a resource available to all students within NJIT's Student Services Division. The CAPE provides academic support services and activities to enhance students' academic and professional development and it works with academic and administrative departments to help students develop the necessary analytical and problem-solving skills to become independent learners.

CAPE provides tutoring, student success workshops and testing accommodations.

## ATHLETICS SENIOR STAFF



**Alexis Schug**  
Assoc. Director of Athletics/SWA  
(973) 596-8452  
schug@njit.edu



**Joe Caiola**  
Asst. Director of Athletics/  
Business & Facilities  
(973) 642-7224  
caiola@adm.njit.edu



**Tim Camp**  
Asst. Director of Athletics/  
Sports Information  
(973) 596-8461  
timothy.camp@njit.edu



# NJIT AND NCAA DIVISION I

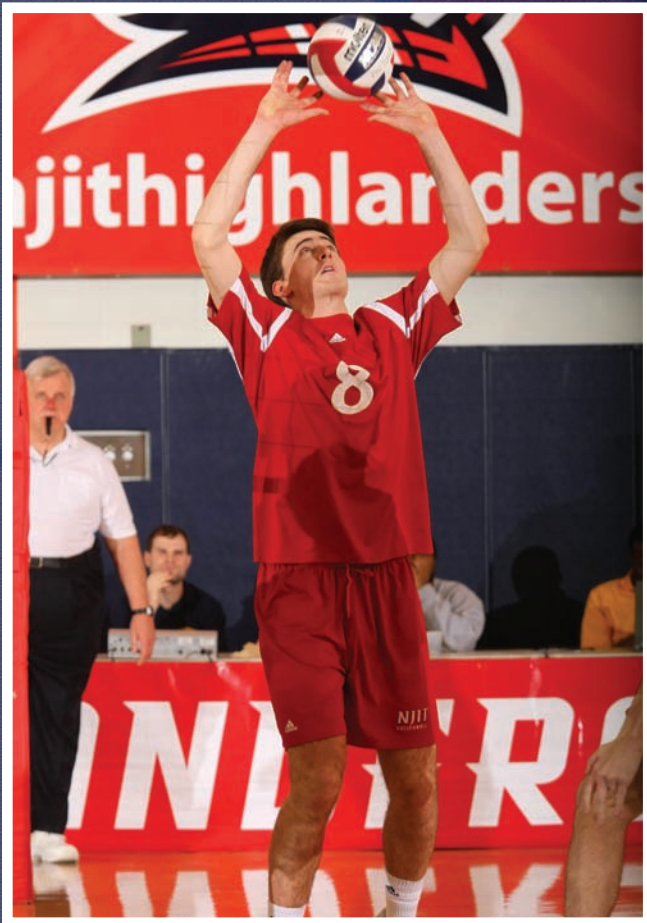
Beginning on September 1, 2009, the entire NJIT athletics program officially gained across-the-board active membership in NCAA Division I, completing a process that began officially in 2003.

NJIT, its teams, and student-athletes enjoy the full benefits of Division I membership, including eligibility for Division I postseason championship competition and the inclusion of the Highlanders among the national Division I leaders in statistics maintained by the NCAA.

Within months of NJIT's active Division I membership, the school won its first national Division I statistical championships, as women's volleyball player Sabrina Baby led the nation in digs per set, while she and her teammates captured the team digs crown for digs, as well.

The NCAA's decision making NJIT a full member of Division I completed a specific timetable that required NJIT and its Department of Athletics to meet a series of annual benchmarks before proceeding to the next step.

*Doug Battersby*



*background photo Brady Smith*

NJIT, which previously competed in NCAA Division II, first moved to reclassify its men's soccer program in 2003. The move grew out of November 2002 meetings among President Robert A. Altenkirch, Vice President Joel Bloom, and Director of Athletics Lenny Kaplan. From there, came a proposal from Dr. Altenkirch to the Board of Trustees, which unanimously approved in February 2003 a plan to reclassify men's soccer to Division I. Little more than two years later, the NCAA approved NJIT's proposal to begin advancing its entire program to Division I.

Men's soccer achieved active Division I status in 2005 and NJIT women's soccer became postseason-eligible in 2007. The remainder of NJIT's athletics program also began reclassifying in 2005, with active status taking longer for an entire program than under the single-sport-per-gender track used for the two soccer teams.

In 2005-06 the lion's share of the competition for all but men's soccer came at the Division II level. In 2006-07, 2007-08, and 2008-09, NJIT's teams competed at the Division I level and complied full with NCAA Division I rules, but were not eligible for championships at the top level.

Every facet of the program has been enhanced in the reclassification, with a special emphasis placed on student-athlete welfare. Facility upgrades have gone along with sports medicine staff expansion, a strength and conditioning program, and academic enrichment. NJIT has also built a model NCAA Division I rules compliance regimen within its athletics program and across the entire university.

A key late benchmark in reclassification came in the spring of 2009, with NJIT's successful completion of the NCAA Division I certification self-study. An in-depth project that takes approximately one year to complete and involves an on-campus visit from a Peer Review team, Division I certification, renewable every 10 years, is required of all active Division I institutions.

"We completed a major milestone in demonstrating that we have the infrastructure in place and the commitment to compete at the highest levels, not only academically but now athletically as well," said Dr. Altenkirch, who made upgrading athletics a priority from the beginning of his tenure as the seventh President of NJIT in May 2002.

Professor Robert English, the NCAA Faculty Athletics Representative and Interim Dean of the School of Management, added, "I am very impressed with NJIT's



# NJIT AND NCAA DIVISION I

student-athletes who have worked hard to meet the challenge of the heightened level of Division I competition and at the same time continued to excel academically, with many athletes earning academic honors and awards and several earning perfect 4.0 GPAs during the semester of competition.”

Further, the NJIT Board of Trustees embraced the transition to Division I as part of the university’s strategic plan to enhance the quality of campus life in NJIT’s transition to a residential university.

Going back to early announcements of NJIT’s NCAA reclassification plans, Altenkirch stated: “As NJIT continues to grow academically, and as a residential university, strengthening the athletics program through the transition to Division I will allow us to align the university with our academic peers.”

Already, NJIT’s teams have competed throughout the United States, taking on opponents from schools that are instantly

recognizable for their stature in academics and athletics.

NJIT teams and student-athletes have faced opponents from seven of the eight Ivy League schools (all except for Brown, which will be the opening opponent for Highlander women’s basketball in 2011-12) and all eight Patriot League schools, including Army and Navy, Bucknell, Lafayette, and Lehigh.

In addition, Highlander teams have taken on squads from such famed conferences as the Atlantic Coast Conference, Big East Conference, Big Ten Conference, Big 12 Conference, and Pac 10 Conference.

Two high-profile opponents--Maryland in men’s soccer in 2005 and Penn State in men’s volleyball in 2008—won national championships following the same regular seasons in which they faced NJIT.

The Highlanders have also competed against members of all of the conferences based in the Northeastern and Mid-Atlantic regions of the United States, including America East, Atlantic 10, Colonial, Metro Atlantic, Mid-Eastern, and Northeast.

The eighth New Jersey-based institution in Division I, NJIT has competed against all seven of its home state peers, including Big East programs Rutgers and Seton Hall.

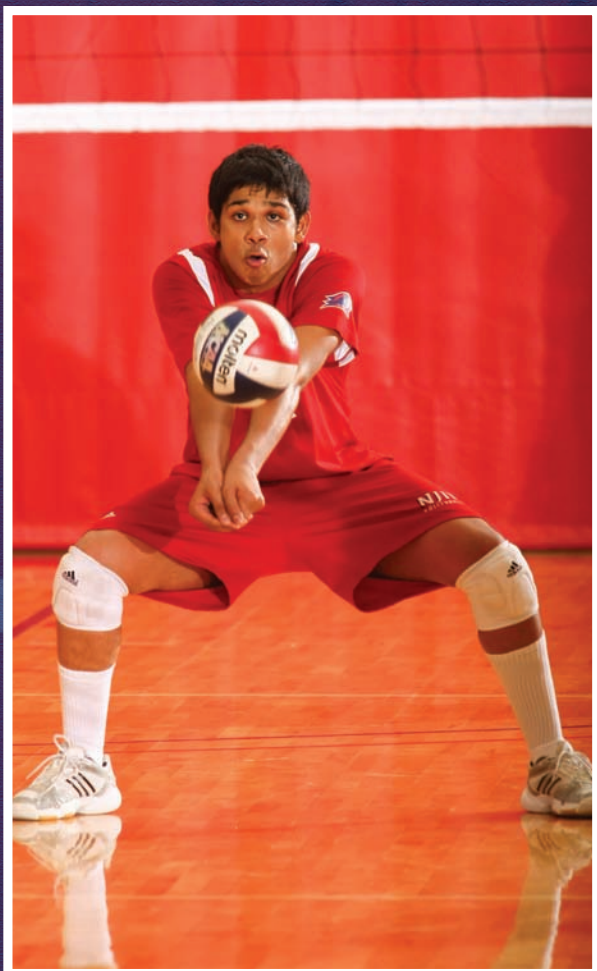
NJIT’s longest-established Division I program, men’s soccer, gained its first win against a Big East foe in 2008, defeating Rutgers a year after topping San Diego State for the Highlanders’ first win over a Top 25-ranked team.

NJIT began play as a core member of its first Division I conference, the Great West Conference, which began full competition in 2009-10. In the spring of 2011, the second season for the GWC, the Highlanders celebrated their first Division I team championship, when women’s tennis captured the Great West title.

With its place in Division I officially certified by the NCAA, NJIT looks ahead to continued growth. That outlook is consistent with President Altenkirch’s frequently expressed view that, “the transition to Division I is just that, a transition, a process rather than an event.”

For his part, Director of Athletics Lenny Kaplan said: “We are looking forward to being a solid and successful member of Division I and we are excited by the opportunity to write a new chapter in the history of NJIT athletics.”

*Dhruv Lad*



*background photo Kevin Van Oss*





# VOLLEYBALL 2012



## Head Coach Ryan McNeil

Ryan McNeil, who came to NJIT in August 2004, has successfully built the fortunes of two volleyball programs for the Highlanders. Now, in a back to the future move, he is focused on rebuilding the fortunes of NJIT men's volleyball.

Originally hired as head coach of the men's team, he has filled that role since the 2005 season, restoring the program to heights it hadn't seen since the 1990s. He was also hired as assistant coach of the NJIT women, but his duties soon expanded to become head coach of that sport, which he led for four seasons (2005 to 2008). In that capacity, he guided the NJIT women through their successful transition to NCAA Division I from Division II.

Beginning in 2009-10, the direction of NJIT's two volleyball programs was reorganized, with McNeil remaining as head men's coach and handing over his duties as head coach of the women to JR

Martins, who was previously assistant coach of both squads.

As men's head coach since 2005, McNeil led a resurgence that saw NJIT return to the upper levels of the Eastern Intercollegiate Volleyball Association, qualifying for the EIVA postseason playoffs for three consecutive years (2006 to 2008) and reaching the playoff semifinals in 2008.

In those 2008 semifinals, NJIT lost to George Mason, ranked 11th in the nation, 3-2, for the right to advance to the conference final against Penn State, which would go on to win the national championship.

Heavy graduation losses took their toll following that deep run in the 2008 EIVA playoffs and the Highlanders have been in rebuilding mode since the 2009 season. The rebuilding began to show signs of taking hold in 2011, when the team surpassed its combined wins total from the previous two seasons.

Recapping his NJIT career to date, McNeil took over a men's program that had four straight losing records and guided his first squad to a .500 overall record in 2005 and followed that up with playoff appearances for three years beginning in 2006. Along the way, NJIT won the 2007 championship of the EIVA Hay Division with a 9-1 division record and a year later marched to the brink of national prominence with a run to the 2008 playoff semifinals.

On the women's side, McNeil assisted on a 2004 team that made a double-digit jump in wins from the previous season and then became interim head coach in 2005 and permanent head coach in 2006.

In 2006, he led NJIT into its first season of Division I competition. Despite facing Division I competition with only two starters returning from the previous year, the Highlanders won 10 matches, surpassing the team's nine wins in its last season at the Division II level in 2005.

Sporting a lineup without a junior or senior in the top seven, McNeil guided the young 2006 squad to a 7-7 mark over the last 14 matches. In 2007, the Highlander women took another step, logging 13 wins--three more than in 2006--and NJIT won five of its last seven 2007 regular season matches. In 2008, his last season heading the women's team, NJIT won 18 matches, the highest wins total in nearly two decades going back to 1990, when the Highlanders, who then played at the Division III level, won 23 matches.

Championship-level volleyball is nothing new to Ryan McNeil, who was a standout player in both Canada and the United States. Later, as an assistant coach at Lewis University in Illinois, he helped coach the men's team that won the 2003 national championship match and the women's team that qualified for two NCAA Tournaments.





# VOLLEYBALL 2012



A native of Montego Bay, Jamaica, McNeil resided in Ontario, Canada, for 15 years. He was MVP of two college teams in Canada--Sheridan College and Ryerson University.

Transferring south of the border to Lewis University in Illinois, McNeil played on the Flyers' 1998 national semifinalists. He then turned to coaching at Lewis, assisting with both the men's and women's teams.

In his two years as an assistant with the Lewis men, they qualified for the NCAA tournament twice, won two Midwest Intercollegiate Volleyball Association crowns and captured the 2003 national title match. He coached with the Lewis women for four seasons and during his tenure the Flyers made the NCAA Tournament twice and achieved national ranking in 2002.

## COACHING STAFF



### Rodrigo Correa

*Assistant Coach, Men and Women*

A 2009 NJIT graduate, Correa is serving as an assistant coach with both the women's and men's volleyball teams.

A 6-foot-4 setter who chose to pursue his studies at NJIT over an offer to play for Brazil's Junior National Team, Correa was a four-year starter and the assists leader for the Highlanders, ranking 26th nationally in assists as a senior, 18th as a

junior, and 20th as a sophomore.

A native of Sao Paulo, Brazil, and the son of an economist, Correa was a business management/finance major enrolled in NJIT's Albert Dorman Honors College.

He earned all-academic honors in the Eastern Intercollegiate Volleyball Association each of his last three seasons playing for NJIT.

He resides in Jersey City, NJ.



### Christianssen Siddayao

*Assistant Men's Coach*

A 2008 NJIT graduate, Siddayao joined the men's volleyball coaching staff in December of 2011.

A four-year starter at the libero position, he led the team in digs with 214 (2.16 per set) in his senior season, also ranking the 5-foot-8 libero 19th in the nation in digs per set.

He was a starter on the NJIT team that reached the 2008 Eastern Intercollegiate Volleyball Association playoff semifinals. NJIT lost to George Mason, ranked 11th in the nation, 3-2, for the right to advance to the conference final against Penn State, which would go on to win the national championship.

Siddayao earned a Bachelor of Science in Management and Information Technology and is currently working as a Business Analyst for Global E-Commerce - IT.







# VOLLEYBALL 2012

## 2012 ROSTER

### NUMERICAL

No.	Name	Yr.	Ht.	Wt.	Pos.	Hometown/High School
1	Herman Kantushov	So.	6-1	165	RS	Qiryat Ono, Israel/Rothberg
2	Matthew Lui	Jr.	6-1	160	S	Aiea, HI/Hawaii Baptist Academy
3	Adam Gustafson	Sr.	6-0	166	S/RS	Monee, IL/ Providence Catholic
4	Andrei Stoyanow	Jr.	6-2	190	OH/S	Sao Paulo, Brazil/Novo Hamburgo
5	Brady Smith	Jr.	6-0	160	L	Kurtistown, HI/Waiakea
6	Aurel Griesshammer	Fr.	6-7	210	MB	Munich, Bavaria, Germany/LSH Kempfenhausen
7	Kevin Van Oss	Jr.	6-8	190	OH	Dayton, OH/Archbishop Alter
8	Doug Battersby	Jr.	6-5	185	S/RS	Ringwood, NJ Don Bosco Prep
9	Oren Zyndorf	Fr.	5-9	130	L	Fair Lawn, NJ/Fair Lawn
10	Ryan Blondell	Jr.	6-0	151	L	Hamlin, NY/Brockport
11	Zak Robben	Fr.	6-0	170	S	St. Louis, MO/St. Louis University HS
13	Trevor Kinaman	Fr.	5-6	140	L	Leesburg, VA/Stone Bridge (Ashburn, VA)
14	TJ Jurko	Fr.	6-3	185	OH	Weston, FL/Archbishop McCarthy (Davie, FL)
15	Dhruv Lad	So.	6-1	195	OH	Old Bridge, NJ/Old Bridge
17	Adam Feehan	Jr.	6-1	155	M	Howell, NJ/Howell
18	Julian Diaz	So.	6-3	170	OH	Pereira, Colombia/Union City
21	Chris Kaepernick	Fr.	6-8	190	OH	Berlin, Germany/Coubertin-Gymnasium
23	Ryan Thomas	Fr.	6-5	170	MB	Port of Spain, Trinidad/International School of Port of Spain
24	Khalil Brown	Fr.	6-2	170	MH	Piscataway, NJ / Piscataway

### ALPHABETICAL

No.	Name	Yr.	Ht.	Wt.	Pos.	Hometown/High School
8	Doug Battersby	Jr.	6-5	185	S/RS	Ringwood, NJ Don Bosco Prep
10	Ryan Blondell	Jr.	6-0	151	L	Hamlin, NY/Brockport
24	Khalil Brown	Fr.	6-2	170	MH	Piscataway, NJ / Piscataway
18	Julian Diaz	So.	6-3	170	OH	Pereira, Colombia/Union City
17	Adam Feehan	Jr.	6-1	155	M	Howell, NJ/Howell
6	Aurel Griesshammer	Fr.	6-7	210	MB	Munich, Bavaria, Germany/LSH Kempfenhausen
3	Adam Gustafson	Sr.	6-0	166	S/RS	Monee, IL/ Providence Catholic
14	TJ Jurko	Fr.	6-3	185	OH	Weston, FL/Archbishop McCarthy (Davie, FL)
21	Chris Kaepernick	Fr.	6-8	190	OH	Berlin, Germany/Coubertin-Gymnasium
1	Herman Kantushov	So.	6-1	165	RS	Qiryat Ono, Israel/Rothberg
13	Trevor Kinaman	Fr.	5-6	140	L	Leesburg, VA/Stone Bridge (Ashburn, VA)
15	Dhruv Lad	So.	6-1	195	OH	Old Bridge, NJ/Old Bridge
2	Matthew Lui	Jr.	6-1	160	S	Aiea, HI/Hawaii Baptist Academy
11	Zak Robben	Fr.	6-0	170	S	St. Louis, MO/St. Louis University HS
5	Brady Smith	Jr.	6-0	160	L	Kurtistown, HI/Waiakea
4	Andrei Stoyanow	Jr.	6-2	190	OH/S	Sao Paulo, Brazil/Novo Hamburgo
23	Ryan Thomas	Fr.	6-5	170	MB	Port of Spain, Trinidad/International School of Port of Spain
7	Kevin Van Oss	Jr.	6-8	190	OH	Dayton, OH/Archbishop Alter
9	Oren Zyndorf	Fr.	5-9	130	L	Fair Lawn, NJ/Fair Lawn



# VOLLEYBALL 2012



## 2011 STATISTICS

### All matches

Overall record: 7-21 Conf: 1-7 Home: 5-9 Away: 2-12 Neutral: 0-0

#	Player	sp	Attack					Set		Serve			Dig			Blocking						points
			k	k/s	e	ta	pct	a	a/s	sa	se	sa/s	re	dig	dig/s	bs	ba	total	blk/s	be	bhe	
16	Malpass, Randall	3	5	1.67	0	5	1.000	0	0.00	3	2	1.00	0	4	1.33	0	2	2	0.67	0	0	-
14	Green, Andrew	6	4	0.67	1	6	.500	0	0.00	0	2	0.00	0	1	0.17	0	0	0	0.00	0	0	-
7	Van Oss, Kevin	97	200	2.06	69	419	.313	5	0.05	23	50	0.24	2	32	0.33	9	48	57	0.59	11	2	-
3	Gustafson, Adam	97	177	1.82	74	451	.228	313	3.23	21	27	0.22	15	173	1.78	9	37	46	0.47	14	2	-
8	Battersby, Doug	95	116	1.22	55	284	.215	127	1.34	14	22	0.15	0	56	0.59	12	43	55	0.58	5	0	-
11	D. Lad	5	13	2.60	7	32	.188	0	0.00	1	1	0.20	1	4	0.80	0	1	1	0.20	0	0	-
17	Feehan, Adam	38	80	2.11	43	211	.175	7	0.18	3	9	0.08	7	35	0.92	2	5	7	0.18	0	1	-
20	Kierznowski, Rafal	53	41	0.77	23	107	.168	2	0.04	8	18	0.15	0	11	0.21	7	29	36	0.68	4	0	-
5	Smith, Brady	93	2	0.02	1	6	.167	27	0.29	0	0	0.00	37	218	2.34	0	0	0	0.00	0	0	-
2	Lui, Matthew	63	14	0.22	8	38	.158	483	7.67	10	28	0.16	0	101	1.60	4	21	25	0.40	2	6	-
4	Stoyanow, Andrei	86	164	1.91	100	457	.140	11	0.13	5	44	0.06	15	96	1.12	5	18	23	0.27	2	1	-
18	Diaz, Julian	13	10	0.77	7	22	.136	1	0.08	2	7	0.15	0	2	0.15	0	2	2	0.15	1	0	-
1	Kantushov, Herman	70	150	2.14	99	431	.118	14	0.20	13	21	0.19	25	92	1.31	3	10	13	0.19	3	0	-
11	Blondell, Ryan	39	0	0.00	0	1	.000	5	0.13	2	4	0.05	4	26	0.67	0	0	0	0.00	0	1	-
15	Lad, Dhruv	52	77	1.48	81	241	-.017	5	0.10	6	32	0.12	13	46	0.88	4	11	15	0.29	5	0	-
	NJIT	102	1053	10.32	568	2711	.179	1000	9.80	111	267	1.09	130	897	8.79	55	227	168.5	1.65	47	13	-
	Opponents	102	1275	12.50	487	2811	.280	1185	11.62	130	388	1.27	111	918	9.00	37	429	251.5	2.47	57	14	-

Team Statistics	NJIT	OPP
ATTACK		
Kills	1053	1275
Errors	568	487
Total Attacks	2711	2811
Attack Pct	.179	.280
Kills/Set	10.3	12.5
SET		
Assists	1000	1185
Assists/Set	9.8	11.6
SERVE		
Aces	111	130
Errors	267	388
Aces/Set	1.1	1.3
SERVE RECEPTIONS		
Errors	130	111
Errors/Set	1.3	1.1
DEFENSE		
Digs	897	918
Digs/Set	8.8	9.0
BLOCKING		
Block Solo	55	37
Block Assist	227	429
Total Blocks	168.5	251.5
Blocks/Set	1.7	2.5
Block Errors	47	57
Ball handling errors	13	14
ATTENDANCE		
Total	1322	3137
Dates/Avg Per Date	14/94	14/224
Neutral site #/Avg	0/0	-
Current win streak	0	-
Home win streak	0	-

Date	Opponent	Score	Score by set	Att.
Jan 07	IPFW	L 0-3	24-26,15-25,20-25	109
Jan 08	IPFW	L 0-3	7-25,15-25,22-25	28
Jan 13	WASHINGTON ADVENTIST	w 3-0	25-6,25-8,25-10	60
Jan 14	at George Mason	L 1-3	13-25,25-20,16-25,15-25	86
Jan 21	at Rutgers-Newark	L 0-3	21-25,22-25,17-25	95
Jan 23	at Saint Francis	L 1-3	15-25,18-25,25-21,14-25	100
Jan 28	HUNTER	w 3-2	25-22,22-25,25-23,21-25,15-13	84
*Feb 04	at Juniata	L 0-3	22-25,16-25,20-25	650
Feb 08	KEAN	w 3-0	25-22,25-15,25-19	101
*Feb 16	NYU	L 1-3	25-20,19-25,16-25,21-25	52
Feb 18	LEES-MCRAE	L 0-3	16-25,18-25,21-25	74
Feb 24	at Springfield College	L 0-3	17-25,22-25,20-25	106
Feb 26	GRAND CANYON	L 1-3	19-25,25-17,22-25,18-25	74
*Mar 01	at Sacred Heart	L 1-3	16-25,19-25,27-25,11-25	292
Mar 04	at Lees-McRae	L 0-3	16-25,15-25,22-25	351
Mar 05	at Pfeiffer	w 3-0	25-19,25-22,25-21	0
Mar 09	at Kean	w 3-2	25-16,23-25,25-20,27-29,15-5	107
Mar 12	SAINT FRANCIS	L 1-3	26-24,26-28,22-25,23-25	172
Mar 18	at #12 Lewis	L 1-3	18-25,22-25,25-16,19-25	378
Mar 19	at #11 Loyola	L 1-3	15-25,25-18,20-25,14-25	432
03/22/11	at Stevens	L 1-3	19-25,19-25,25-18,15-25	75
Mar 27	WASHINGTON ADVENTIST	w 3-0	25-8,25-6,25-13	52
*Mar 30	at NYU	L 2-3	22-25,21-25,27-25,25-19,10-15	215
*Apr. 2	JUNIATA	L 1-3	24-26,21-25,25-21,22-25	107
*Apr 05	SACRED HEART	L 0-3	18-25,22-25,22-25	100
*Apr 09	HARVARD	w 3-1	25-19,25-22,25-27,25-17	200
Apr 15	RUTGERS-NEWARK	L 0-3	15-25,22-25,24-26	109
*Apr 16	at Harvard	L 1-3	19-25,21-25,25-23,16-25	250

Record in 3-set matches:4-9 • Record in 4-set matches:1-11 • Record in 5-set matches:2-1





# VOLLEYBALL 2012

## PROGRAM HISTORY

Year	Overall	League*	Div./Finish	Postseason	Head Coach	Captains	MVP
1971							Michael Wiercinski
1972							Michael Wiercinski
1973				ECVL playoffs			Lee McQuillin
1974				ECVL playoffs			Lee McQuillin
1975				ECVL playoffs		Lee McQuillin	
1976				ECVL playoffs			Manny Martinez
1977				ECVL playoffs			Yves Etienne
1978				ECVL playoffs			Yves Etienne
1979				ECVL playoffs			Yves Etienne
1980				ECVL playoffs			Ray Elsmann
1981				ECVL playoffs			Paul Aloia
1982				ECVL playoffs			Jack Van Vladricken
1983				ECVL playoffs			Joe Pniewski
1984				ECVL playoffs			Danny Siryj
1985	12-5			ECVL playoffs	Oleg Moiseenko	Joe Pniewski	Joe Pniewski
1986	12-7		East/2nd	---	Oleg Moiseenko	Myron Petruch	Ted Laarkamp
1987	23-11		Atlantic/1st	EIVA quarters; No. 20 in nation	Oleg Moiseenko	Ted Laarkamp, Tom Rogers	Ted Laarkamp
1988	27-10		Atlantic/1st	EIVA quarters	Oleg Moiseenko	Jim Livolsi,	Rudy Romulus
1989	11-18	7-3	East/2nd	EIVA quarters	Dave DeNure	Walt Szynalski Mike Bensch, Rudy Romulus	Dave Trent
1990	20-16	6-2	East/2nd	EIVA quarters	Dave DeNure	Mike Bensch	Rudy Romulus
1991	24-14		East/2nd	EIVA quarters; EIVA DIII champs	Dave DeNure		
1992	19-16		East/2nd	EIVA DIII semis, IAC champs	Dave DeNure		
1993	20-10			EIVA quarters, EIVA DIII runner-up, IAC champs	Dave DeNure	Eric Wenstrom	Eric Wenstrom
1994	19-10			EIVA quarters, IAC champs	Dave DeNure	Brian Driesse	Tarik Rodgers
1995	20-13			EIVA DIII runner-up, IAC champs	Dave DeNure	Tarik Rodgers	
1996	18-11			EIVA DIII 1st round; IAC champs	Dave DeNure	Jon Bednasz	
1997	17-10			EIVA quarters, EIVA DIII champs	Dave DeNure	Jon Bednasz	Harold Nazaire
1998	17-8	5-1	Tait/T-1st	EIVA quarters, EIVA DII champs	Dave DeNure (175-126)		Wycliffe Gordon
1999	24-5		Tait	EIVA finals, EIVA DII champs	Manny Del Rio		Harold Nazaire
2000	16-12	8-6	Tait	EIVA semis	Manny Del Rio		Josh Zuidema
2001	5-19	2-12	Tait/7th	---	Manny Del Rio (45-36)		Fernando Fuentes
2002	1-22	0-14	Tait/8th	---	Alex Lykouriotis (1-22)	Justin Meyer	Hunter Haliniak
2003	5-19	1-11	Hay/7th	---	Michael Borga	Ron Horn, Rob Miller	Ron Horn
2004	3-17	2-11	Sweeney/T-4th	---	Michael Borga (8-36)	Rob Miller, Ryan Walsh	Keith Samuel
2005	11-11	6-5	Sweeney/3rd	--	Ryan McNeil	Matt Thorkildsen, Brian Como	
2006	13-13	8-4	EIVA Hay/2nd	Lost EIVA Playoff 1st Round	Ryan McNeil	Brian Como, Eduardo Welter	Eduardo Welter
2007	19-10	9-1	EIVA Hay/1st	Lost EIVA Playoff 1st Round	Ryan McNeil	Mike Nonnenmann, Eduardo Welter	
2008	13-14	4-8	EIVA Tait/4th	EIVA Semifinals (lost to #11 George Mason, 3-2)	Ryan McNeil	Mike Nonnenmann, Eduardo Welter	
2009	3-23	0-12	EIVA Tait/7th	---	Ryan McNeil	Amobi Armstrong	
2010	3-18	2-6	EIVA Tait/7th	---	Ryan McNeil		
2011	7-21	1-7	EIVA Tait/t4th	---	Ryan McNeil (69-110)		

\*--league was known as the ECVL (Eastern Collegiate Volleyball League) through 1985 and was renamed EIVA (Eastern Intercollegiate Volleyball Association) thereafter. IAC Independent Athletic Conference, a separate multi-sport organization. League record and Division listed is for ECVL and EIVA.

Note: All blank information is missing from the NJIT files. Anyone with documented information, or correction to the above is asked to contact the sports information office at (973) 596-8461 or [timothy.camp@njit.edu](mailto:timothy.camp@njit.edu).



# VOLLEYBALL 2012



## ALL - AMERICANS / ACADEMIC ALL - AMERICANS

### NJIT ALL-AMERICANS

**1995**

**Tarik Rogers** – ASICS Small College Player of the Year

**1997**

**Harold Nazaire** – AVCA First Team

**1998**

**Wycliffe Gordon** – AVCA Second Team

**Harold Nazaire** – AVCA Second Team

**1999**

**Harold Nazaire** – AVCA First Team

### ACADEMIC ALL-AMERICANS

**1990**

**Rudy Romulus** – GTE

**1991**

**Rudy Romulus** – GTE

### EIVA ALL-ACADEMIC HONORS

**2011**

**Adam Gustafson**

*Biomedical Engineering*

**Adam Feehan**

*Biomedical Engineering*

**Andrei Stoyanow**

*Business*

**Brady Smith**

*Communications*

**2010**

**Adam Gustafson**

*Bio-Medical Engineering*

**2009**

**Rodrigo Correa**

*Management*

**2008**

**Rodrigo Correa**

*Management*

**Leonardo Paludo**

*Management*

**Eddie Welter**

*Management*

**Greg Wagner**

*Computer Science*

**2007**

**Rodrigo Correa**

*Management*

**Leonardo Paludo**

*Management*

**Eddie Welter**

*Management*

**Greg Wagner**

*Computer Science*



# ATHLETICS FACILITIES

The New Jersey Institute of Technology teams play home games and practice in a combination of facilities on campus and off.

The on-campus facilities include Lubetkin Field at J. Malcolm Simon Stadium for outdoor sports and the Estelle and Zoom Fleisher Athletic Center for indoor sports. In addition, NJIT in 2011 opened is the Naimoli Family Athletic and Recreational Facility, a multi-purpose indoor facility on the site of the former outdoor tennis courts.

Off-campus venues include Bears and Eagles Riverfront Stadium, a professional minor league stadium that is the home of NJIT baseball; the Prudential Center, home of the NHL Devils and NBA Nets, which has hosted selected NJIT basketball games; and, Branch Brook Park in Newark and Van Cortlandt Park in the Bronx, home sites for NJIT cross country. All except for Van Cortlandt Park are less than two miles from the NJIT campus.



*Lubetkin Field at J. Malcolm Simon Stadium*

## **Lubetkin Field at J. Malcolm Simon Stadium**

The men's and women's soccer teams play their home games and practice on campus at Lubetkin Field at J. Malcolm Simon Stadium, a first-class venue for college soccer.

The field on the west end of NJIT's University Heights campus is an all-weather facility, with 24/7 availability for competition or practice. Outfitted with SprinTurf artificial grass in the summer of 2004, Lubetkin Field at J. Malcolm Simon Stadium also includes lighting for night contests, bleacher seating for more than 1,000 spectators, a press box and scoreboard.

The fully-enclosed facility, with its entrance a few feet opposite the entrance of the indoor Estelle and Zoom Fleisher Athletic Center, can take its place alongside any college soccer facility in the Northeast.

The home of Highlanders soccer served as the host site for the first-ever Great West Conference women's soccer championship tournament in November 2009. Previously, NJIT hosted the three-day 2005 ECAC Division II women's soccer championship tournament.

In the fall of 2005, when the Northeast was hit with record rainfall, games went on

without a hitch at Lubetkin Field, thanks to the quality of the surface. Indeed, with the rain disrupting schedules around the region, some crucial Big East contests involving Seton Hall were moved to NJIT's home field. Those games, too, went off without a hitch.

## **Estelle and Zoom Fleisher Athletic Center**

The NJIT men's and women's basketball teams and men's and women's volleyball teams play their home games in the Fleisher Athletic Center gymnasium, while the swimming team competes and practices in building's pool. The Fleisher Center also houses intercollegiate fencing, as well as all athletic department offices, varsity and general weight and fitness rooms, and the athletic training room.

In the summer of 2006, the gym underwent renovation to include installation of a new floor and baskets, new lighting, new sound system and new scoreboards, along with entirely new seating for approximately 1,500 spectators after the first phase of renovation. The back bay 'C gym' can be sectioned off from the main competition floor, making the facility useful for intramurals, physical education classes and campus recreation time, while being able to host multiple simultaneous events.



# ATHLETICS FACILITIES

A six-lane swimming pool in Fleisher Athletic Center is home to the NJIT swimming team. Fencing has its own area on the second floor of the building.

In addition to all athletic department offices, the Fleisher Athletic Center also houses the sports medicine staff in the Athletic Training Room and the varsity weight room, supervised by the head strength and condition coach. The building's third floor is home to a fitness center, which is open for use by all students and staff.

## **The Naimoli Family Athletic and Recreation Facility**

Opened in 2011, the facility is approximately 25,600 square feet. The Naimoli Family Center will be a multi-purpose space for athletics, community recreation, and gatherings involving large numbers of people.

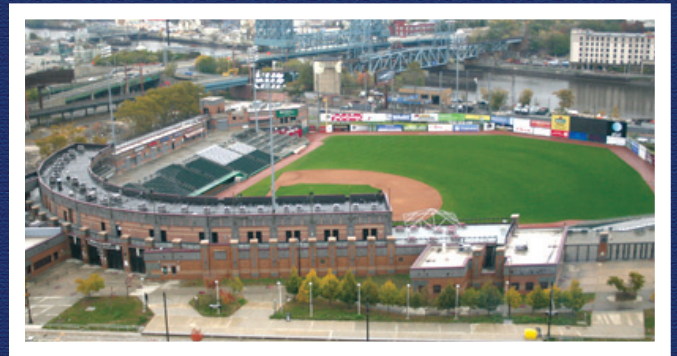
Built on top of the old outdoor tennis courts adjoining the Fleisher Athletic Center, construction of this new building has been made possible, in part, by a generous gift from Vincent Naimoli '62, Chairman and CEO of Anchor Industries International and Chairman Emeritus/ Founder of the Tampa Bay Rays major league baseball team.

The facility houses courts for tennis and is available for other athletic and recreational activities, including practice for basketball and volleyball. It is heated and air conditioned, with flooring appropriate for the intended athletics and recreational activities.

Its indoor tennis courts offer vital year round practice and playing opportunities for NJIT's intercollegiate tennis teams, which have been consistently successful in the transition to Division I. In 2011, the women's tennis team became NJIT's first conference championship team in the Division I era.

## **Bears and Eagles Riverfront Stadium: Home of the NJIT Highlanders**

Joe Torre, then the manager of the New York Yankees, visited New Jersey Institute of Technology on December 8, 2005 to herald a new partnership between NJIT's baseball team, the Highlanders, and the Newark Bears.



*Bears and Eagles Riverfront Stadium*

Torre, a friend of the Bears and of college baseball, was on hand as the Highlanders signed a 10-year contract to play their home games at Bears & Eagles Riverfront Stadium in Newark.

"I think this partnership is nothing but aces," Torre said during a press conference at NJIT. "It's a partnership between two class organizations that will make for nothing but a lot of fun for everyone."

For the previous two years, the Highlanders played their home games at the stadium. But the team's longer-term commitment to play at the stadium came as NJIT elevated its baseball program to Division I.

"NJIT is bringing Division I baseball to this great stadium," said NJIT President Robert A. Altenkirch, "which will generate the highest level of excitement. It's a great partnership that allows NJIT to play intercollegiate baseball in a great facility, maybe the best for college baseball in the country."

Bears and Eagles Riverfront Stadium, the \$30 million state-of-the-art home of the Newark Bears, officially opened to the public on July 16, 1999.

With a seating capacity of 6,200 Bears and Eagles Riverfront Stadiums affords everyone in attendance an up-close view of the action. The ballpark also has 20 luxury suites, a picnic area, a party deck, a concert stage situated behind the outfield wall and a major league-caliber press box featuring two radio booths and two television booths.





## ATHLETICS FACILITIES



The name, Bears and Eagles Riverfront Stadium, honors Newark's rich baseball history. The original Bears were a farm team for the New York Yankees up until 1949 and the Eagles were a very successful Negro League team that played in Newark until 1950.

### Prudential Center

In October 2007, the Prudential Center ushered in a new era in sports and entertainment in Newark and the entire northern New Jersey area.

Prudential Center is the cornerstone in the revitalization and renaissance of downtown Newark. In addition to the arena, Newark will soon add scores of condominiums, restaurants, themed bars and mixed retail establishments. Prudential Center, one of the finest arenas in the country, is New Jersey's home for hockey, basketball, concerts and numerous other events.

A public/private partnership between the City of Newark and Devils Arena Entertainment made the \$375 million Prudential Center a reality that is changing the face of downtown Newark and making it a destination place for sports and live entertainment in the region.

"The Rock" is located about a mile from NJIT's University Heights campus and is known best as the home of the National Hockey League New Jersey Devils and now, the home of the National Basketball Association New Jersey Nets.

The arrival of the spectacular Prudential Center nearly coincided with NJIT's arrival as an NCAA Division I institution—the first in Newark and the newest in New Jersey in more than 20 years. The Rock opened one year after NJIT began Division I competition as part of its NCAA reclassification which is now complete.

In the arena's inaugural year, NJIT played host to six basketball games on four dates, including four men's basketball games and two women's games. Included was the first women's basketball game in the building's history, when the Highlanders entertained Cornell on January 15, 2008.

The Highlanders hosted additional basketball games in subsequent years and have played there each year of the building's existence. Further, NJIT's club ice hockey team plays all of its home games

in the full-size Devils practice rink facility (AmeriHealth Pavilion), which adjoins the main arena and has an 800-seat capacity. And one of the special events held in the main arena is NJIT's annual commencement.

### Branch Brook Park and Van Cortlandt Park

A hallmark of the NJIT cross country program under veteran coach Al Alonso is its ability to host cross country competition that have made Highlander-sponsored races a popular destination for schools from throughout the New York/New Jersey area.

In 2009, NJIT hosted the Great West Conference championships at Van Cortlandt Park in the Bronx, and the course, which is home to some of the most prestigious events in the sport, is also the home venue for other annual NJIT-hosted races. Branch Brook Park, which is a public park of Essex County, reaches into several towns, including Newark, with the park entrance less than a mile from the NJIT campus.



# ABOUT NEWARK



## Newark: The Renaissance City

NJIT is located in the heart of New Jersey's largest city, Newark, with a population of over 300,000, making it the 65th-largest city in the United States. A major urban center, Newark is a city on the move.

Attractions in Newark include:

- **The Prudential Center, a major indoor entertainment and sports venue housing New Jersey Devils hockey, New Jersey Nets basketball, major concerts and other premier events**
- **New Jersey Performing Arts Center**
- **The Newark Museum**
- **The Newark Public Library**
- **Symphony Hall**
- **Branch Brook Park**
- **Art galleries, restaurants, shopping**
- **The Ironbound neighborhood, renowned for its dining and vibrant nightlife**
- **An urban architectural laboratory**
- **Professional minor league baseball (Newark Bears)**

## Newark: New Jersey's College Town

Some 30,000 undergraduate, graduate, and professional students attend classes in the University Heights section, which is home to NJIT, Rutgers-Newark, the University of Medicine and Dentistry of New Jersey (UMDNJ), and Essex County College.

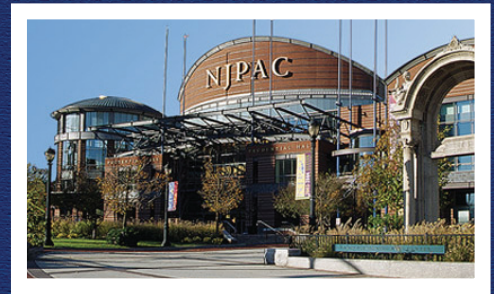
Adjacent to NJIT to the east, is the Newark campus of Rutgers University and the two schools enjoy an exceptionally close and productive relationship. NJIT and Rutgers students have library privileges at both campuses. NJIT students may also enrich their educational experience by enrolling in Rutgers-Newark courses and in full degree programs in disciplines not offered by NJIT, such as art, music, geology, and psychology.

Each year, the two universities co-sponsor a common season of theatrical productions, as well as 'World Week', a joint program of honors colloquia, and a variety of other cultural and social activities.

NJIT also enjoys a cooperative relationship with its neighbor to the west in the University Heights area, UMDNJ, with several joint degree programs.

## New Jersey/New York Metropolitan Region

NJIT and Newark are a part of a region that is a magnet not only to the rest of the United States, but also to the world.



In Newark and neighboring northern New Jersey alone, attractions such as the Prudential Center, New Jersey Performing Arts Center, Meadowlands Sports Complex, Red Bull Arena, Liberty Science Center, and numerous others are minutes away by car and in most cases accessible by public transportation. Literally dozens of shopping malls are within a 20-minute drive of Newark, as well.

Midtown Manhattan, with all that it and the rest of New York City offer, is less than 15 miles from the NJIT campus.

NJIT students have regular access to discount tickets for Broadway shows, museums, concerts, and sporting events.

The school also sponsors weekend trips throughout the northeastern United States, with activities such as skiing, boating, swimming, hiking, and more.

The spectacular Jersey shore is less than an hour away by car and winter sports are within a couple of hours drive to the west and north.





# SPORTS & ENTERTAINMENT AROUND NEWARK

NJIT, with its campus in Newark, NJ, sits in a region that abounds with major professional sports unlike any other in the United States and perhaps in the world. There are nine teams in the major professional leagues (MLB, NFL, NBA, and NHL) located in New York City, northern New Jersey and Long Island.

Only one of nine major teams is more than 25 miles from Newark, but most, including the New Meadowlands Stadium (Giants and Jets NFL football), Madison Square Garden (NBA Knicks, NHL Rangers), are much closer.

The three closest professional sports venues (listed below) are within three miles of NJIT's campus and can be accessed in a matter of minutes at low cost by public transportation, beginning with Newark Light Rail, from campus.

## Prudential Center

The home of the National Hockey League New Jersey Devils and the New Jersey Nets of the National Basketball Association is in downtown Newark at the corner of Mulberry and Edison streets, about one mile from the NJIT's University Heights campus.

Opened in October 2007, 'The Rock' is the centerpiece of the city's Downtown Core Redevelopment Project. In addition to NHL hockey and NBA basketball, it has hosted numerous entertainment and sporting events, including NJIT basketball.

NJIT played basketball in the Rock in the inaugural year and in each year since. Indeed, NJIT hosted the first women's basketball game ever played in the Prudential Center on January 15, 2008 (NJIT vs. Cornell).

The arena, with full-capacity seating for 18,500 spectators, features a 4,800 square-foot exterior LED screen, as well as the latest in ice-surface technology and a gourmet restaurant overlooking

the ice for Devils games. The building contains 850,000 square feet of space, 9,000 tons of steel, eight million pounds of structural steel and 25,000 cubic yards of concrete.

## Red Bull Arena

Located in Harrison, NJ, just across the Passaic River from Newark and less than three miles from the NJIT campus, the new home of the New York Red Bulls (opened in March 2010) sets the standard for soccer venues across North America.

The state-of-the-art soccer-specific facility is a major component of a multi-billion dollar development.

Red Bull Arena has a number of key design elements which give its seating bowl a close-to-the-action feeling and the unique stadium roof design extends from its leading edge over the entire seating bowl and then curve down to the concourse.

The overall seating capacity for soccer is 25,000, including 30 luxury suites (20 lower level and 10 upper level) and 1,116







*Red Bull Arena*

club seats. Other amenities include three stadium clubs and two retail outlets.

## **Bears and Eagles Riverfront Stadium**

Bears and Eagles Riverfront Stadium, the \$30 million state-of-the-art home of the professional baseball Newark Bears and since 2004 the home of NJIT Highlanders baseball, officially opened to the public on July 16, 1999. With a seating capacity of

6,200, “The Den” affords fans an up-close view of the action. The ballpark also has 20 luxury suites, a picnic area, a party deck, a concert stage situated behind the outfield wall and a major league-caliber press box.

In December 2005, NJIT and the Bears held a joint press conference to herald a new partnership that includes a 10-year deal that extends Bears and Eagles Riverfront Stadium as the home of NJIT Highlanders baseball.

*Bears and Eagles Riverfront Stadium*







# VOLLEYBALL 2012

## EASTERN INTERCOLLEGIATE VOLLEYBALL ASSOCIATION



NJIT men's volleyball is a member of the Eastern Intercollegiate Volleyball Association. The EIVA, which is the top college volleyball circuit in this part of the United States and contains eight members, all of whom compete in NCAA Division I.

Before the 2012 season, the EIVA had three Division III programs, but with the introduction of an NCAA National Championship in Division III, those programs—Juniata, NYU, and Springfield have left the EIVA in order to play a schedule of teams from their own NCAA Division. Further, Rutgers-Newark, which formerly operated a Division I men's volleyball program while sponsoring Division III sports in the rest of its program, is reclassifying men's volleyball to DIII and will leave the EIVA when its reclassification is complete.

The champion of the EIVA playoffs receives an automatic qualifier into the four-team NCAA National Division I Championship. The other three teams in the NCAA championship tournament are: the champions of the Mountain Pacific Sports Federation, Midwestern Intercollegiate Volleyball Association and an at-large team from one of the three major men's volleyball leagues (EIVA, MIVA, MPSF).

In 2008, Penn State, ranked first in the nation during the regular season with just one loss, won the EIVA playoffs and went on to capture the NCAA championship, as well.

Founded in 1971 as the Eastern Collegiate Volleyball League, the EIVA was given its current name in 1985. Penn State made EIVA and NCAA history in 1994 by becoming the first non-California school to win the national title.

The league has been realigned several times before this year, with a major move occurring before the 2006 season. In 2004 and 2005, the EIVA had three divisions, but the alignment was dropped back to two divisions—the Tait and the Hay—for 2006.

The EIVA used to group its divisions based on power ratings, with the higher power-rated teams aligned in the Tait Division. To account for changes in the relative strength of the teams, the EIVA has a system of promotion and relegation similar to European soccer. At the end of the season, the champion of the second power-rated division (Hay) was promoted to the Tait for the following season. Meanwhile, the bottom team in the Tait was relegated to the Hay Division for the following season.

As the 2007 EIVA Hay Division champion, NJIT earned promotion to the EIVA Tait Division. In 2010, NJIT returned to the Hay Division after two years in the Tait.

NJIT reached the EIVA finals in 1999, losing to Penn State, and returned to the semifinals in 2000. The Highlanders won the now-defunct EIVA Division II Tournament in 1998 and 1999. Prior to reclassifying to Division

II, they won the EIVA Division III championship (also no longer contested) in 1991 and 1997 and were the Division III runners-up in 1993 and 1995. In 2008, NJIT made its deepest run into the EIVA playoffs since 2000. The 2008 Highlanders won their first two playoff matches to reach the EIVA semifinals, hosted by Penn State. NJIT's 2008 run came to an end in a tightly-contested 3-2 (lost set 5, 13-15) to #11 in the nation George Mason.

More information is available at [www.eivavolleyball.com](http://www.eivavolleyball.com) the official website of the EIVA.

### 2011 EIVA Standings

<b>TAIT</b>	<b>Division</b>	<b>Overall</b>
Penn State	10-0	24-7
George Mason	8-2	17-11
Springfield	4-6	18-15
Rutgers-Newark	4-6	17-12
Saint Francis	3-7	10-19
Princeton	1-9	3-19

<b>HAY</b>	<b>Division</b>	<b>Overall</b>
Juniata	8-0	18-12
NYU	5-3	19-9
Sacred Heart	5-3	13-9
NJIT	1-7	7-21
Harvard	1-7	9-13

### EIVA Playoffs

#### EIVA Championship

#1 Penn State def. #3 Springfield - 3-0 (25-20, 25-14, 25-24)

#### Hitting Percentage

1. Greg Falcone, Springfield	.524
2. Cal Palumbo, Springfield	.506
3. Ben Wolff, Juniata	.473

#### Kills per game

1. Joe Sunder, Penn State	4.54
2. Mark Jones, George Mason	4.46
3. Enzo Mackenzie, Sacred Heart	4.37

#### Assists per game

1. Edgardo Goas, Penn State	11.03
2. Connor Mortland, NYU	10.85
3. Mike Becker, Springfield	10.69

#### Aces per game

1. Austin Pappas, Rutgers-Newark	0.57
2. Kenneth de Groh, Rutgers-Newark	0.49
3. Jeff Stapleton, Princeton	0.39

#### Blocks per game

1. Shaun Sibley, George Mason	1.53
2. Brandon Joyner, George Mason	1.17
3. Francis Hodgson, NYU	1.08

#### Digs per game

1. Dennis Del Valle, Penn State	2.65
2. John Wappler, Saint Francis	2.42
3. Brady Smith, NJIT	2.34



# VOLLEYBALL 2012



## NJIT HALL OF FAME

Name	Grad. Year	Contribution	Sport (s)	Years Active	Year of Induction
BAKUN, Andrew I.	1982	Athlete/Asst. Coach	M-Soccer	1978-81/90-91	2005
BAKUN, Myron	1967	Athlete	M-Soccer	1964-66	1991
BARTH, Roland E.	1960	Athlete	M-Fencing	1957-59	2009
			M-Soccer	1956-59	
BAUDER, Fred "Coach"	--	Coach	M-Basketball	1932-61	1989
BLUM, Raymond E.	1950	Distinguished Alumnus	Speedskating/Cycling	--	1996
BORJA, Hernan "Chico"	1981	Athlete	M-Soccer	1977-80	1986
BORNAKO, Gregory "Egor"	1970	Athlete	M-Fencing	1966-70	1987
BOWSER, Hamilton V.	1952	Athlete	M-Fencing	1948-52	1989
BRADLEY, Thomas	1978	Athlete	M-Swimming	1974-78	1990
BROWN, Andrew D.	1963	Athlete	M-Soccer	1956-59	2006
CRIMMINS, David	1952	Athlete	M-Fencing	1948-52	2007
CRUZ, Edward	1963	Athlete	M-Soccer	1959-62	1995
DAWSON, Marilyn E.	1986	Athlete	WVB/WBKB/SB	1982-86	1991
DeNICOLA, Carmine P.	1978	Athlete	Baseball	1975-78	2005
DeNURE, Dave	--	Coach	M-Volleyball	1982-98	2009
			W-Volleyball	1986-90	
			W-Basketball	1987-88	
DeVITO, Louis	1960	Athlete	M-Soccer/M-Fencing	1956-60	1992
DIAS, Joe A.	1977	Athlete	M-Soccer	1973-76	1993
DRURY, Eugene M.	1963	Athlete	M-Tennis	1960-63	1988
ENG, Katherine	1993	Athlete	W-Volleyball	1989-92	2007
ETIENNE, Yves	1979	Athlete	M-Volleyball	1976-78	1990
FEHN, Gilbert F.	1940	Athlete	M-Basketball/M-Tennis	1936-40	1992
FITZGERALD, Joseph M.	--	Coach/Asst. Coach	M-Basketball	1961-66/52-61	1986
FLEISHER, Seymour "Zoom"	1951	Athlete	M-Basketball	1947-51	1992
GAGLIARDO, Salvatore A.	1985	Athlete	M-Basketball	1981-85	1995
GALLAGHER, Thomas G.	1985	Athlete	M-Basketball	1981-85	1991
GIOVANNOLI, Arnold L.	1953	Athlete	M-Basketball	1950-53	1993
GOLDRICK PITT, Elizabeth M.	1990	Athlete	WVB/SB/WBKB/WTen	1985-90	1995
GRAZIANO, Jean M.	1989	Athlete	Softball	1986-89	2009
GRUENEWALD, Wendy A.	1997	Athlete	WBKB/SB/WVB/WSoc	1992-96	2003
HAAASE, Jay W.	1975	Athlete	M-Fencing	1971-75	1988
HAMMOND, Kenneth W.	1979	Athlete	M-Soccer	1974-77	2003
HANDWERKER, Andy	1963	Athlete	M-Soccer	1959-62	2002
HAUSSER, Paul C.	--	Administrator	--	1953-91	1990
		Coach	Fencing/Baseball	1954-88/53-72	
HUBEY, Ali	1972	Athlete	M-Soccer	1968-71	1990
HURTADO, Fabian	1975	Athlete	M-Soccer	1970-74	1987
IRIS, Herb	1951	Benefactor	--	--	2007
KAMINSKY, Nicholas J.	1978	Athlete	Baseball	1975-78	2006
KASBARIAN, Raymond P.	1966	Founder/Athlete	Judo	1962-66	1989
KETZNER, Robert Shelby	--	Coach	Rifle	1962-86	1987
KHOWAYLO, Alex	1969	Athlete	M-Soccer	1960-63	1996
LUBETKIN, Charles "Tudy"	1953	Athlete	M-Basketball/M-Track	1949-52	1994
LYNCH, Robert K.	1984	Athlete/Coach	M-Fencing	1977-80/86-91	1993
MacDONALD, Dan	1984	Athlete	Baseball	1981-84	1992
OLSEN, Richard J.	1969	Athlete	M-Basketball	1965-69	1988
OLSON, George R.	1977	Athlete	Baseball	1974-77	1987
PAULIUS, Raymond V.	1985	Athlete	M-Soccer	1980-83	2006
RODGERS, Tarik	1996	Athlete	M-Volleyball	1992-95	2010
ROGERS, Warren	1988	Athlete	M-Basketball	1983-87	1993
ROMULUS, Rudy	1991	Athlete	M-Volleyball	1988-91	1996
ROSS, Jonathan A.	1956	Athlete	M-Soccer	1953-55	2010
SARLO, Paul A.	1992	Athlete	Baseball	1989-91	2005
SCHMID, John "Gene"	--	Asst Coach/Coach	Baseball	1968-72/73-97	2002
SIMON, J. Malcolm	--	Coach	M-Soccer	1955-83	1994
		Director of Athletics	--	1983-94	
SKURLA, Peter J.	1941	Athlete	Bowling	1937-41	1992
SORIANO, Gregory	1975	Athlete	M-Fencing	1968-72	2010
SWANSON, Robert F.	--	Director of Athletics	--	1947-82	1986
TAETZSCH, Robert	1952	Athlete	M-Fencing	1948-52	2007
TAETZSCH, William	1952	Athlete	M-Fencing	1948-52	2007
TOSATO, Lawrence P.	1956	Athlete	M-Basketball/Baseball	1952-56	1987
TUBELLO, Jeffrey	1976	Athlete	Rifle	1972-76	1988
VAN WRIGHT, Nevea	1997	Athlete	W-Basketball	1991-96	2005
WALSH, John J.	1966	Athlete	MSoc/MBKB/Baseball	1962-66	1986
WASNIEWSKI, Frank	1980	Athlete	M-Tennis	1977-80	1990
WELGOS, Bob	1962	Athlete	M-Basketball/Bowling	1959-62	2005
WOROBEC, Myron S.	1966	Athlete	M-Soccer	1962-65	1994
YONEZUKA, Yoshishada	--	Founder/Coach	Judo	1962-?	1991
ZORN, Werner	1962	Athlete	M-Soccer	1958-61	1988

### Teams

Year
Men's Soccer
Men's Basketball
Baseball

### Accomplishments

NAIA co-National Champion
NJIT's first ECAC and IAC champion
NJIT's second ECAC and IAC champion

### Year of Induction

1988
1990
1993



# DIRECTIONS TO NJIT

## FOR GPS USERS

The address for Lubetkin Field at J. Malcolm Simon Stadium, the Estelle and Zoom Fleisher Athletic Center, and the Naimoli Family Athletic and Recreational Facility is 80 Lock Street, Newark, NJ, 07102.

## BY CAR

### New Jersey Turnpike: Driving North from

**South Jersey:** Take NJ Turnpike to Exit 13A Newark Airport. After toll stay to left and follow signs to Rt. 1 & 9 North. You will merge onto Rt. 1 & 9 North. Airport will be on right. Follow signs for downtown Newark and Rt. 21 North-(left lane exit ramp). Downtown Newark will be in front of you. NYC will be off to your right. Follow Rt. 21 North (McCarter Highway). Turn left on Raymond Blvd. Follow Raymond Blvd. past Warren Street traffic light and Fleisher Athletic Center, Naimoli Center, and Lubetkin Field at J. Malcolm Simon Stadium will be to your right (one soccer goal line runs along Warren Street and the soccer sideline parallels Lock Street).

### New Jersey Turnpike: Driving South from

**North Jersey:** Take exit 15W to Route 280 West, then follow Route 280 West directions.

**Route 280 West:** After drawbridge, take Exit 15A (Rt. 21 South - McCarter Highway). Follow Rt. 21 South to Raymond Blvd. Turn right on Raymond Blvd. Follow Raymond Blvd. past Warren Street traffic light and Fleisher Athletic Center, Naimoli Center, and Lubetkin Field at J. Malcolm Simon Stadium will be to your right (one soccer goal line runs along Warren Street and the soccer sideline parallels Lock Street).

**Route 280 East:** Take Exit 15 (Rt. 21 South - McCarter Highway). Follow Rt. 21 South to Raymond Blvd. Turn right on Raymond Blvd. Follow Raymond Blvd. past Warren Street traffic light and Fleisher Athletic Center, Naimoli Center, and Lubetkin Field at J. Malcolm Simon Stadium will be to your right (one soccer goal line runs along Warren Street and the soccer sideline parallels Lock Street).

### Garden State Parkway (North & South

**bound):** Take exit 145 to Route 280 East, then follow Route 280 East directions.

**Route 1 & 9 North & South:** Take exit marked Newark, Rt. 21 North (McCarter Highway). Follow Rt. 21 North (McCarter Highway). Turn left on Raymond Blvd. Follow Raymond Blvd. past Warren Street traffic light and Fleisher Athletic Center, Naimoli Center, and Lubetkin Field at J. Malcolm Simon Stadium will be to your right (one soccer goal line runs along Warren Street and the soccer sideline parallels Lock Street).

**Route 78 East:** Take Route 78 East to Rt. 21 North. Turn left on Raymond Blvd. Follow Raymond Blvd. past Warren Street traffic light and Fleisher Athletic Center, Naimoli Center, and Lubetkin Field at J. Malcolm Simon Stadium will be to your right (one soccer goal line runs along Warren Street and the soccer sideline parallels Lock Street).

**Route 22 East:** Take Route 22 East to Route 21 North. Turn left on Raymond Blvd. Follow Raymond Blvd. past Warren Street traffic light and Fleisher Athletic Center, Naimoli Center, and Lubetkin Field at J. Malcolm Simon Stadium will be to your right (one soccer goal line runs along Warren Street and the soccer sideline parallels Lock Street).



**Route 21 North:** Follow Rt. 21 North to Raymond Blvd. Turn left onto Raymond Blvd. Follow Raymond Blvd. past Warren Street traffic light and Fleisher Athletic Center, Naimoli Center, and Lubetkin Field at J. Malcolm Simon Stadium will be to your right (one soccer goal line runs along Warren Street and the soccer sideline parallels Lock Street).

**Route 21 South:** Follow Rt. 21 South (McCarter Highway) to Raymond Blvd. Turn Right on Raymond Blvd. Follow Raymond Blvd. past Warren Street traffic light and Fleisher Athletic Center, Naimoli Center, and Lubetkin Field at J. Malcolm Simon Stadium will be to your right (one soccer goal line runs along Warren Street and the soccer sideline parallels Lock Street).

**New York Thruway:** Thruway to Exit 14A, Garden State Parkway. Follow Garden State Parkway directions above.

**George Washington Bridge:** NJ Turnpike South to Exit 15W. Follow Route 280 West directions above.

**Lincoln Tunnel:** West on Rt. 3 to Rt. 21 South. Turn right onto Raymond Blvd. Follow Raymond Blvd. past Warren Street traffic light and Fleisher Athletic Center, Naimoli Center, and Lubetkin Field at J. Malcolm Simon Stadium will be to your right (one soccer goal line runs along Warren Street and the soccer sideline parallels Lock Street).

**From Brooklyn, Queens and Long Island:** Take Verrazano-Narrows Bridge (Interstate 278) and follow 278 across Staten Island. Cross Goethels Bridge. Follow signs to New Jersey Turnpike North then follow New Jersey Turnpike directions above.

## PARKING

**Bus/Van Parking:** Visiting buses and vans may usually park on Lock Street adjacent to the athletic center. Please be careful not to block the parking space reserved for the doctor.

**Visitor Parking:** Visitor parking may be reserved in advance through your host. Otherwise, visitor parking at NJIT is available in the NJIT parking deck. Turn right onto Warren Street. Turn right onto Colden Street and proceed around the block to Summit Street. Parking Deck entrance is located to your right before the intersection with Warren Street.

### Parking for on-campus athletic contests:

NJIT is offering free off-street parking for fans attending regular season home soccer matches, volleyball games and basketball games. The parking entrance, marked by a sign, is located across Warren Street from the soccer field.

## OTHER TRANSPORTATION SYSTEMS

**Newark Liberty International Airport:** Minutes from the NJIT campus. A minibus (Newark Airlink) or taxi service connects the airport with Penn Station in Newark. Bus, Newark Light Rail, and taxi connections are available at the station.

**Newark Penn Station:** Located in downtown Newark, connections to the NJIT campus may be made by bus, Newark Light Rail, or taxi.

**Morris & Essex Broad Street Station:** A five-block walk to the NJIT campus via MLK Boulevard to Central Avenue. Taxi service is also available.

**Newark Light Rail:** From Penn Station in Newark, take the Warren Street stop for the NJIT campus. The Warren Street stop is on the sidewalk behind the press box for Lubetkin Field at J. Malcolm Simon Stadium.

## OFFICIAL HOTEL OF THE HIGHLANDERS

### SpringHill Suites Newark Liberty International Airport

652 Route 1 & 9 South, Newark, NJ  
973/624-5300 (ask for Melanie Schellhas)  
ASK FOR SPECIAL NJIT HIGHLANDERS RATE (discount code NJIS for kings, NJIT for doubles)

## DOWNTOWN

### Hilton Newark Gateway

Gateway Center, Raymond Boulevard & McCarter Highway  
Newark, NJ, 973/622-5000

### Robert Treat Hotel

50 Park Place, Newark, NJ, 973/622-1900

### Hampton Inn & Suites Newark Riverwalk

100 Passaic Ave, Harrison, NJ, 973/483-1900

## NEAR NEWARK LIBERTY INTERNATIONAL AIRPORT

### Best Western Newark Airport West

101 International Way, Newark, NJ, 973/621-6200

### Hilton Newark Airport

1170 Spring Street, Elizabeth, NJ, 908/351-3900

### Holiday Inn Newark Liberty International Airport

160 Frontage Road, Newark, NJ, 973/589-1000





## 20112 HIGHLANDERS VOLLEYBALL

Back Row (l-r): Assistant Christiansen Siddayao, Dhruv Lad, TJ Jurko, Doug Battersby, Ryan Thomas, Aurel Griesshammer, Khalil Brown, Julian Diaz, Matthew Lui, Adam Gustafson, Manager, Assistant Coach Rodrigo Correa

Front (l-r): Herman Kantushov, Andrei Stoyanow, Ryan Blondell, Trevor Kinaman, Head Coach Ryan McNeil, Oren Zyndorf, Brady Smith, Zak Robben, Adam Feehan



## 2012 HIGHLANDERS VOLLEYBALL

### JANUARY

13	Fri.	at Grand Canyon	7:00pm (PT)
14	Sat.	vs. UC San Diego (at Grand Canyon)	7:00pm (PT)
		at Grand Canyon	6:00pm (PT)

#### *Golden Dome Classic (1.20-1.21)*

20	Fri.	vs. Hunter (at Rutgers-Newark)	5:00pm
21	Sat.	at Rutgers-Newark	7:00pm
28	Sat.	LEES-McRAE	7:00pm
31	Tue.	NJCU	7:00pm

### FEBRUARY

4	Sat.	<b>**ALUMNI EVENT**</b>	2:00pm
10	Fri.	at Saint Francis (PA)*	7:00pm
11	Sat.	at Penn State*	7:00pm
15	Wed.	RUTGERS-NEWARK*	7:00pm
17	Fri.	LEWIS	7:00pm
18	Sat.	LOYOLA-CHICAGO	7:00pm
21	Tue.	SACRED HEART*	7:00pm
25	Sat.	PFEIFFER	7:00pm

### MARCH

2	Fri.	at IPFW	7:00pm
3	Sat.	at IPFW	7:00pm
9	Fri.	PRINCETON*	7:00pm
16	Fri.	at Lees-McRae	7:00pm
17	Sat.	at Kings (TN)	3:00pm
23	Fri.	PENN STATE*	7:00pm
24	Sat.	SAINT FRANCIS (PA)*	4:00pm
29	Thu.	LIMESTONE	7:00pm
31	Sat.	at Harvard*	2:00pm

### APRIL

6	Fri.	GEORGE MASON*	7:00pm
11	Wed.	RUTGERS-NEWARK*	7:00pm
13	Fri.	HARVARD* (Senior Day)	7:00pm
14	Sat.	at George Mason*	7:00pm
18	Wed.	at Princeton*	7:00pm
21	Sat.	at Sacred Heart*	4:00pm

Head Coach: Ryan McNeil (Lewis '01)

Assistant Coach: Rodrigo Correa (NJIT '09)

Home matches in BOLD CAPS at Estelle and Zoom Fleisher Athletic Center

\*EIVA Conference Matches; Visit [www.njithighlanders.com](http://www.njithighlanders.com) for updated times