



# VOLLEYBALL

2011



[NJITHIGHLANDERS.COM](http://NJITHIGHLANDERS.COM)





NJIT  
New Jersey's  
Science &  
Technology  
University

NJIT  
THE  
EDGE  
IN  
KNOWLEDGE

CAMPUS CENTER

NJIT  
ENGINEERING



# TABLE OF CONTENTS

About NJIT .....	2-3
University Administration .....	4-5
Student-athlete support .....	5-6
Athletics Senior Staff .....	6
Coaching Staff .....	7-8
Roster .....	9
2009-10 Statistics and Results .....	10-11
NJIT and NCAA Division I .....	12
Program History .....	13
Prudential Center .....	14
Athletics Facilities .....	15
About Newark .....	16
Sports and Entertainment Around Newark .....	17
NJIT Hall of Fame .....	18
Directions to NJIT .....	19
Great West Conference .....	20

## QUICK FACTS

### New Jersey Institute of Technology

**Location:** University Heights, Newark, NJ

**Founded:** 1881

**Enrollment:** 5,924 (undergraduate)

**NJIT website:** [www.njit.com](http://www.njit.com)

**Nickname/Colors:** Highlanders/Red and White (Blue accent)

**Home Court/Capacity:** Estelle and Zoom Fleisher Athletic Center (1,500)

**Affiliations:** NCAA Division I, ECAC

**Conference:** Eastern Intercollegiate Volleyball Association (Hay Division)

**University President:** Dr. Robert A. Altenkirch

**Director of Athletics:** Lenny Kaplan

**Athletic Department Phone:** 973-596-3636

## Sports Information

**NJIT Athletics website:** [www.njithighlanders.com](http://www.njithighlanders.com)

**Results hotline:** 973-596-5555

**Assistant AD for Sports Information:** Tim Camp

**Phone/Email:** 973-596-8461/[timothy.camp@njit.edu](mailto:timothy.camp@njit.edu)

**Assistant SID:** Stephanie Pillari

**Phone/Email:** 973-596-8324/[pillari@njit.edu](mailto:pillari@njit.edu)

## Men's Volleyball

**Head Coach (alma mater, year):** Ryan McNeil (Lewis '01)

**Phone/Email:** 973-596-6498/[mcneil@adm.njit.edu](mailto:mcneil@adm.njit.edu)

**NJIT Career Record:** 62-89 (6 years, NJIT men)

**Assistant Coaches:** Rodrigo Correa

**2009-10 record:** 3-18

**EIVA Record/finish:** 2-6

## MEDIA INFORMATION

This guide is designed to assist in coverage of NJIT men's volleyball. For home games, the NJIT sports information office will provide official box score 10 minutes following each game. Coach Ryan McNeil and requested players will be available for interviews on the basement level of Fleisher Athletic Center following a 10-minute cooling-off period. Radio broadcast requests should be made at least 10 business days prior to the contest. Requests for coach and player interviews on non-game days should be made through the NJIT sports information office (973-596-8461).

## CREDITS

The 2011 NJIT Men's Volleyball Guide is a production of the NJIT Sports Information Office in cooperation with the Office of University Communications. Written, compiled and edited by Tim Camp and Stephanie Pillari. Cover and interior design by Karyn Olsen Design. NJIT photographs and information courtesy of University Communications. All interior team and action photography by Larry Levanti. Red Bull Arena photo (p. 17) courtesy of Getty Images/RBNY.

## WHY THE HIGHLANDERS?

The home of NJIT, University Heights, was formerly known as the Newark Highlands and NJIT's mailing address used to be High Street, until the thoroughfare was renamed in memory of Dr. Martin Luther King, Jr.

In 2006-07, NJIT athletics, in keeping with its move to NCAA Division I, unveiled a new graphic identity, which includes a new Highlanders logo (shown). Developed by CN Foundry for NJIT, the logo depicts the traditional Highlander, whose ferocity and bravery against all odds are the stuff of legend.



## ON THE COVER:

*Front cover:* (left to right): Adam Gustafson, Brady Smith, Doug Battersby

*Inside back cover:* 2011 team photo

*Back cover:* 2011 schedule; a night view of the NJIT campus overlooking downtown Newark

**NJIT is New Jersey's Science & Technology University. With roots going back to 1881, when it was founded as Newark Technical School, New Jersey Institute of Technology observed its 125th anniversary in 2006.**

Located in University Heights, Newark, NJ, home to more than 30,000 college students, NJIT's campus is just 10 miles from New York City.

Playing a critical role in shaping New Jersey's future, NJIT, as a major public technological university, is an important pipeline for the flow of technology into society. The university's educational programs prepare students to be leaders in the technology-dependent economy of the 21st century. University researchers seek new knowledge to improve processes and products for industry. Through public and private partnerships and economic development efforts, the university helps to grow new business ventures that fuel the economy.

In recent years, NJIT has put more than \$83 million toward new and improved buildings and facilities on the 45-acre campus, including biomedical engineering labs and a campus center.

## Instructional Programs

NJIT offers an ever-expanding array of educational programs, with eight new academic programs approved beginning in 2009-10, which comes after the addition of 14 new programs in 2008. As of 2009, NJIT



lists 55 bachelor's degree majors, 53 master's degree programs and 19 doctoral programs — through six schools:

**Newark College of Engineering**  
**College of Architecture and Design**  
**College of Science and Liberal Arts**  
**School of Management**  
**Albert Dorman Honors College**  
**College of Computing Sciences**

NJIT has 416 full-time faculty; more than 98 percent of whom hold the highest degree in their field. The student-faculty ratio is 13:1, with more than 5,300 undergraduate students and more than 2,800 graduate students. Our students hail from 33 states and more than 100 countries to rank eighth in the nation for diversity.

Albert Dorman Honors College enrolls more than 500 students who take advantage of honors courses, research opportunities, advising and mentoring. Honors College students have SAT scores ranking in the top 10 percent nationally.

With more than 44,000 alumni, NJIT is rated by U.S. News and World Report as a top-tier research university offering bachelor's, master's and doctoral degrees.

## Research

NJIT drew more than \$75 million in research funding in 2005 and faculty members welcome student collaboration on research projects.

## Economic Development

NJIT is committed to economic development for Newark and the region. The university operates several outreach centers that provide direct technical assistance to the state's businesses with the goal of helping small and medium-sized companies. NJIT is also the home of New Jersey's oldest and largest incubator facility, and was one of the first institutions in the nation to adopt economic development as a fourth mission element, together with instruction, research and community service. More than 60 technology start-up companies, many of which hire NJIT students, are on campus.

## The Career Edge

All 10 of the majors with the highest starting salaries for 2005-06 grads are in engineering, computing and business, according to the National Association of Colleges and Employers.

Computer and data processing services lead the list of the 10 fastest-growing occupations in projections compiled by the U.S. Department of Labor. Computer-related employment is expected to grow 117 percent by 2008, according to the Career Guide to Industries.

As technology changes all fields, those with science and technology backgrounds are positioned to lead. Among the CEOs of the S&P 500 companies, engineering is the single largest undergraduate degree and more than half of CEOs have undergraduate degrees in engineering, business management, science, math and computing.





## The Global Edge

The diversity in NJIT's student body and faculty prepares graduates to understand and succeed in the global marketplace. NJIT was named among the world's top 500 universities in a study by the Institute of Higher Education, Shanghai Jiao Tong University.

## The Technology Edge

NJIT has been designated as one of the nation's most technologically sophisticated universities by Forbes.com and a Princeton Review survey and the university has received major funding from the National Science Foundation and the National Security Agency in recent years.

## The Academic Edge

NJIT has long been a national leader in applying new technologies and approaches to the education experience. NJIT was a pioneer in requiring computer science for students in all majors and the School of Architecture has led innovations in teaching CAD and digital design. The School's innovative "paperless" first-year program was recently cited by Campus Technology Magazine.

Students have a wide range of educational choices in building an interest-tailored program. Among their options are cross-enrolling at neighboring Rutgers to enrich their program with subjects such as music and languages.

NJIT students learn emerging technologies from researchers behind the technologies,

developing valuable marketplace skills. Real-world experience through experiential learning makes graduates more marketable, with many co-op opportunities leading to permanent jobs.

## The Regional Edge

New Jersey, with America's highest concentration of pharmaceutical, hi-tech, biotech, and medical device companies, is the place to study technology. It has the nation's highest per capita number of engineers and scientists as residents, while also leading in per capita rate of patents issued. Further, the Newark-New York region is a living laboratory for architecture and building sciences, environmental engineering and transportation.

## The Research Edge

NJIT has been designated by the State of New Jersey as the Homeland Security Technology Systems Center and NJIT operates the world-renowned Big Bear Solar Observatory.

State Legislature, recognizing an urgent need, sought a home for what would be the state's technical school. The efforts of Newark's public and private sectors resulted with the opening of Newark Technical School, addressing the state's need.

Over time, the university expanded its curriculum and mission. In 1919, the university established baccalaureate programs in three engineering fields. By the middle of the 20th century, Newark Technical School was transformed into the robust Newark College of Engineering.

The post-war period was one of enormous activity with regular expansion of the campus, as well as the introduction of doctoral level programs. In 1975, with the addition of the New Jersey School of Architecture, the institution had evolved into a technological university, emphasizing a broad range of degrees and dedication to significant research and public service. Newark College of Engineering, stronger than ever, remained intact, but a new university name — New Jersey Institute of Technology — reflected the institution's expanded mission.

A broadened mission called for the creation of a residential campus and the opening of NJIT's first dormitory in 1980 began a period of steady growth that continues. Two new schools were established during the 1980s—the College of Science and Liberal Arts (1982) and the School of Industrial Management (1988). The Albert Dorman Honors College was established in 1994, and the newest school, the College of Computing Sciences, was created in 2001. Beginning in 2009 the College of Architecture and Design was created to house the New Jersey School of Architecture and the new school of Art and Design.

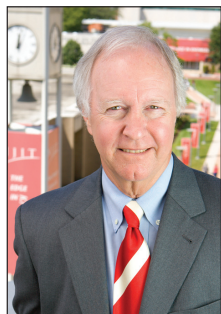


## A History of NJIT

From the Industrial Revolution to the Information Age, New Jersey Institute of Technology has a rich history with its beginnings developing from the industrial age.

In 1881, an act of the New Jersey





## Dr. Robert A. Altenkirch

### President

Having joined NJIT as its seventh president in July 2002, Dr. Robert A. Altenkirch is leading the university in a period of multi-layered growth.

In recent years, NJIT has put more than \$83 million toward new and improved buildings and facilities, while also drawing similar dollars in annual research funding.

Under President Altenkirch, NJIT has expanded its course offerings, with 16 new degree programs added in the 2008-09 academic year alone, and 13 more in various stages of development for implementation in the following two years.

Coinciding with the expansion is NJIT's transition from a smaller commuter campus to a larger institution with a larger resident student population. The incoming class of 2013 was the

largest in the history of the school, and more than half the freshman class resides on campus.

Tied to that transition is Altenkirch's strong belief that the home institution in New Jersey's largest city needs to be residential and provide the experiences associated with a residential campus. At the same time, Altenkirch is committed to NJIT's involvement with the community in its home city of Newark.

Intercollegiate athletics fits those goals naturally and upgrading NJIT athletics has been a priority of Altenkirch's presidency going back to November 2002 meetings that led to NJIT's reclassification to NCAA Division I.

Adding a personal dimension to his support, Altenkirch, a multi-sport athlete in high school, freshman baseball player at Purdue University, and a former college soccer official, and his wife, Beth, are regular attendees at NJIT competitions, home and away.

Immediately before his selection as president of NJIT, Altenkirch was vice president for research at

Mississippi State University (MSU), a position he held from 1998 to 2002.

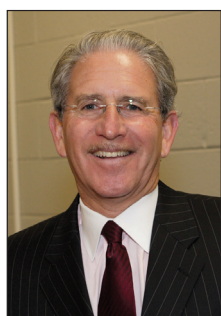
Prior to his appointment as vice president at MSU, Altenkirch served as dean of the College of Engineering and Architecture at Washington State University (1995-98).

From 1988 to 1995, he was dean of the College of Engineering at MSU. He also served as professor and chair of mechanical engineering at the University of Kentucky (1975-88).

Altenkirch holds a PhD from Purdue University, an MS from the University of California, Berkeley, and a BS from Purdue, all in mechanical engineering.

He is the author of over 50 publications and nearly 100 presentations in combustion and heat transfer and served as principal investigator for 10 Space Shuttle experiments investigating the spread of fire in reduced gravity.

He is a fellow of the American Society of Engineers and in 2008 received the Ellis Island Medal of Honor.



## Dr. Joel Bloom

### Vice President for Academic and Student Services

Dr. Joel Bloom, who joined NJIT in July 1990, is responsible for eight divisions of the university, including physical education and athletics.

In 1998, Bloom was appointed the first dean of the Albert Dorman Honors College in addition to his vice president responsibilities. The honors college enrolls over 500 students, including residents of 15 states and several foreign countries. The combined average SAT score is over 1300 and freshmen

typically have ranked in the top 10 percent of their high school graduating class. Honors College students maintain a grade point average higher than 3.5.

Prior to his arrival at NJIT, Dr. Bloom served seven years as assistant commissioner of the New Jersey Department of Education for the Division of General Academic Education. He was responsible for managing many of the education department's initiatives, over 300 grants and contracts, and a \$24 million budget.

Formerly a teacher and school administrator in New York City Public Schools, Dr. Bloom was also a director of research and instructor at Teacher's College, Columbia University.

He is chair of the Greater Newark Consortium for Pre-College Education and vice chair of the State Board for Communities and Schools. He serves further as a member of numerous boards at the state, regional and national levels and has received national and state education awards, as well as federal, foundation and corporate grant awards. He has published journal articles and presented papers on school improvement, curriculum development, college transition and student assessment.

Dr. Bloom holds a master's degree and a doctorate from Teacher's College, Columbia University. He also earned master's and bachelor's degrees from Hunter College of the City University of New York.



## Lenny Kaplan

### Director of Athletics

Since taking over as head of NJIT's division of physical education and athletics in August 2000, Lenny Kaplan has been instrumental in guiding NJIT's reclassification to NCAA Division I.

Kaplan helped stabilize and expand a program that was entering its fourth year in Division II when he arrived in Newark. In late 2002, after discussions

with university President Dr. Robert A. Altenkirch and Vice President Dr. Joel Bloom, Kaplan took on the task of steering NJIT's programs into Division I, a process that reached fruition with the NCAA's granting active Division I status, with full championship eligibility effective September 1, 2009.

Throughout Kaplan's tenure, NJIT has enhanced the athletics program, particularly in areas that benefit the student-athletes directly.

The sports offerings have expanded to its current 18 varsity programs. And since 2004, NJIT has renovated its two main on-campus venues—Lubetkin Field at J. Malcolm Simon Stadium at

Lubetkin Field and the Estelle and Zoom Fleisher Athletic Center. Further, construction has begun on the Naimoli Family Recreation Center, a 25,600-square foot facility on the site of the old tennis courts that will enhance the recreational and intercollegiate opportunities on campus.

The school also signed a 10-year partnership to play all home baseball in the professional Bears and Eagles Riverfront Stadium and later agreed to host basketball in the new Prudential Center, downtown Newark home of the NHL's New Jersey Devils.

Under Kaplan's leadership, many teams achieved regional and national Division II ranking. Success for several women's teams was unprecedented, with



basketball, tennis and soccer all reaching postseason play for the first time in his administration.

Additionally, men's volleyball captured a 2007 divisional championship in the Eastern Intercollegiate Volleyball Association and the next year reached the EIVA playoff semifinals hosted by eventual 2008 national champion Penn State.

## Sports Medicine

NJIT sports medicine is moving forward with expanded facilities and a staff of three full-time trainers led by head trainer Matt Koscs, MS/ATC, with assistant trainers Paul Grayner, MEd/ATC, and Sandra Brendle, MEd/ATC. They work with team physicians Louis Rizio, MD, and Stephen Matta, DO.

**Matt Koscs**, who earned both his bachelor's and master's degrees from the University of Delaware, has served NJIT as head trainer since July 2009, a year after he joined the staff as an assistant trainer. As an undergrad at Delaware, he was recipient of the Paris Delligatti Memorial Award for Excellence in Athletic Training.

Prior to NJIT, he served three years as head trainer at Hodgson Vocational Technical High School in Newark, DE. He also worked with soccer clubs in Delaware and was employed at Christiana Care Physical Therapy Plus, in Newark, DE.

**Paul Grayner**, who holds a bachelor's degree from Saint Leo College in Florida and a master's from American University in Washington, DC, has a diverse background in athletic training, having served at the college and professional levels, as well as in a fitness center setting. He joined the NJIT staff late in 2008.

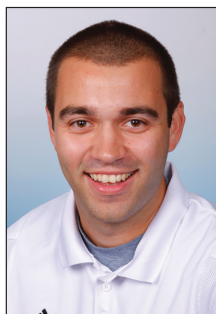
From the mid-1970s to the mid-1980s, he was a trainer in the minor league systems of the New York Yankees and New York Mets and in 1984 he was assistant trainer with the Mets. He later worked with the Long Island Knights professional basketball team.

At the collegiate level, he was head trainer at Fairleigh Dickinson University in Teaneck, NJ from 1989 to 1998 and earlier worked as an assistant trainer at Hofstra, Adelphi and FDU.

**Sandra Brendle**, who joined the NJIT staff as an assistant trainer in the summer of 2009, earned her bachelor's degree, majoring in athletic training, from Greensboro (NC) College in 2007. She earned her master's in athletic training at Old Dominion University in May 2009. At ODU, she

Kaplan guided the Highlanders toward further stability with membership in the newly-expanded all-sports Great West Conference, which offers a conference home for 11 of NJIT's varsity sports.

NJIT's outstanding home facilities will allow it to host conference championships in the Great West Conference and allowed it to host ECAC postseason championships in 2005-06.



**Matt Koscs**

worked with seven teams and was on the medical staff for the 2008 NCAA Division I Women's Basketball Tournament first and second rounds. At Greensboro, she was 2006 Athletic Training Student of the Year and worked on the 2004 NCAA Division III Men's and Women's Soccer Championship tournament medical staff.

**Dr. Rizio** is a board certified orthopedic surgeon and is fellowship trained in the field of sports medicine. He is a graduate of Rutgers and after earning his medical degree from the UMDNJ/New Jersey Medical School, Dr. Rizio completed his orthopedic residency at Tufts University in Boston.

He then completed a sports medicine fellowship at the University of Miami and was assistant team physician of the Hurricanes, as well as the Miami Dolphins, the Miami Hurricanes.

Dr. Rizio practices at the New Jersey Sports Medicine Institute in Livingston, NJ. Prior to starting his own practice, Dr Rizio was the Chief of Sports Medicine at the NJ Medical School from 2000-2005. He is affiliated with four New Jersey hospitals: St. Barnabas Medical Center (Livingston); Short Hills Medical Center (Short Hills); Mountainside Hospital (Montclair); and, Overlook Hospital (Summit).

**Dr. Matta**, who is board certified in family medicine, currently specializes in primary care sports medicine at Mountainside Hospital in Montclair, NJ, a post he assumed after three years in the family practice residency program at Valley Baptist Medical Center in Harlingen, TX. He is a 2007 graduate of a five-year DO/MBA dual degree program with Philadelphia College of



**Paul Grayner**

Before coming to NJIT, Lenny Kaplan served 11 years at Manhattan College, where he began as Manhattan's director of operations and was assistant athletics director from 1991-2000.

Kaplan, a 1988 graduate of St. John's University with a degree in athletics administration, resides in Merrick, NY, with his wife, Nancy, and their sons, Michael and Joshua.



**Sandra Brendle**

Osteopathic Medicine for his medical degree and Saint Joseph's University for an MBA in healthcare administration. He is a 2002 magna cum laude graduate of Duquesne University in Pittsburgh, with a BS in honors chemistry. He and his family reside in Belleville, NJ.



**Dan Huff**

## Strength and Conditioning

Strength and conditioning is a key part of a successful Division I program, with an eye toward maximizing individual and team performance in competition. The strength and conditioning coach also works closely with the Athletic Training Staff in the areas of injury prevention and injury rehabilitation.

The 2008-09 year brought another dimension to NJIT athletics with the hiring of **Dan Huff**, CSCS, as the program's first full-time strength and conditioning coach. In addition to the hiring of a full-time coach to coordinate the strength and conditioning, NJIT renovated the weight rooms and purchased new equipment, with the area dedicated to use by the Highlander teams.

Huff previously served five years as strength and conditioning coordinator at Fairleigh Dickinson University in Teaneck, NJ, from 2003 to 2008, working with an 18-sport NCAA Division I program.

Huff was Sports Performance Director for Velocity Sports Performance in Wall, NJ, immediately before accepting his position at NJIT. He is a graduate of William Paterson University of New Jersey. He holds numerous certifications.



## Academic Enrichment

NJIT's Center for Academic and Personal Enrichment (CAPE) added a new component in 2007 with the addition of an Associate Director position that was created for the specific purpose of serving the needs of NJIT's student-athletes.

The position focuses on five key areas: academic support, career development, personal development, leadership and community service including the Student-Athlete Advisory Committee and CHAMPS Life Skills for NJIT's nearly 300 student-athletes.

**Sandra Taylor** filled the post in January 2010, having previously spent her professional career at Manhattan College, which is also her alma mater.

Working at Manhattan, a founding member of the Metro Atlantic Athletic Conference, Taylor was most recently Associate Director of Athletics and Senior Woman Administrator, filling those posts from 1996 to 2010.

For much of that time (1995-2003), she was Chief Athletic Department Compliance Officer. She began her service at Manhattan as Athletic Department Ticket Manager, serving in that capacity from 1993 to 2003.



**Sandra Taylor**

She served on numerous NCAA, conference and internal college committees, including service on the NCAA Division I Management Council from 2004 to 2007 and as chair of the NCAA Women's Lacrosse Committee from 2002 to 2006.

She earned both her bachelor's degree in secondary education and her master's degree in special education from Manhattan College and is a doctoral candidate in educational leadership at St. Mary's University in Winona, MN.

Sandra and her husband, Ken, who is Associate Commissioner for Men's Basketball and Baseball at the MAAC, reside in Monroe Township, NJ, with their daughters, Katherine, who was born in May 2004, and Samantha, who was born in July 2009.



**Tim Wuorinen**

In 2008-09, **Tim Wuorinen** moved over to CAPE as eligibility certification officer/academic advisor, having spent the previous five-plus years working in the NJIT Department of Athletics as assistant athletic director and coordinator for compliance and student-athlete services.

Tim Wuorinen was a compliance fellow with the MAAC and he has worked in the athletic offices of four colleges, including Western New England College, his undergraduate alma mater. In addition to his bachelor's degree from Western New England, he earned a master's degree from NJIT.

Tim and his wife, Tara, who is the Academic/Athletic Coordinator at Saint Peter's College, reside in Aberdeen, NJ. Their son, Tyler, was born in May of 2010.

NJIT's Center for Academic and Professional Enrichment, headed by **Dr. Marybeth Boger**, is a resource available to all students within NJIT's Student Services Division. The CAPE provides academic support services and activities to enhance students' academic and professional development and it works with academic and administrative departments to help students develop the necessary analytical and problem-solving skills to become independent learners.

CAPE provides tutoring, student success workshops and testing accommodations.

## ATHLETICS SENIOR STAFF



**Alexis Schug**

Assoc. Director of Athletics/SWA  
(973) 596-8452  
schug@njit.edu



**Joe Caiola**

Asst. Director of Athletics/  
Business & Facilities  
(973) 642-7224  
caiola@adm.njit.edu



**Tim Camp**

Asst. Director of Athletics/  
Sports Information  
(973) 596-8461  
timothy.camp@njit.edu



## COACHING STAFF



**Ryan McNeil**  
*Head Coach*

Ryan McNeil, who came to NJIT in August 2004, has successfully built the fortunes of two volleyball programs for the Highlanders. Now, in a back to the future move, he is focused on rebuilding the fortunes of NJIT men's volleyball.

Originally hired as head coach of the men's team, he has filled that role since the 2005 season, restoring the program to heights it hadn't seen since the 1990s. He was also hired as assistant coach of the NJIT

women, but his duties soon expanded to become head coach of that sport, which he led for four seasons (2005 to 2008). In that capacity, he guided the NJIT women through their successful transition to NCAA Division I from Division II.

Beginning in 2009-10, the direction of NJIT's two volleyball programs was reorganized, with McNeil remaining as head men's coach and handing over his duties as head coach of the women to JR Martins, who was previously assistant coach of both squads.

As men's head coach since 2005, McNeil led a resurgence that saw NJIT return to the upper levels of the Eastern Intercollegiate Volleyball Association, qualifying for the EIVA postseason playoffs for three consecutive years (2006 to 2008) and reaching the playoff semifinals in 2008.

In those 2008 semifinals, NJIT lost to George Mason, ranked 11th in the nation, 3-2, for the right to advance to the conference final against Penn State, which would go on to win the national championship.

Heavy graduation losses took their toll following that deep run in the 2008 EIVA playoffs and the Highlanders have been in rebuilding mode since the 2009 season.

Recapping his NJIT career to date, McNeil took over a men's program that had four straight losing records and guided his first squad to a .500 overall record in 2005 and followed that up with playoff appearances for three years beginning in 2006. Along the way, NJIT won the 2007 championship of the EIVA Hay Division with a 9-1 division record and a year later marched to the brink of national prominence with a run to the 2008 playoff semifinals.

On the women's side, McNeil assisted on a 2004 team that made a double-digit jump in wins from the previous season and then became interim head coach in 2005 and permanent head coach in 2006.

In 2006, he led NJIT into its first season of Division I competition. Despite facing Division I competition with only two starters returning from the previous year, the Highlanders won 10 matches, surpassing the team's nine wins in its last season at the Division II level in 2005.

Sporting a lineup without a junior or senior in the top seven, McNeil guided the young 2006 squad to a 7-7 mark over the last 14 matches. In 2007, the Highlander women took another step, logging 13 wins--three more than in 2006--and NJIT won five of its last seven 2007 regular season matches. In 2008, his last season heading the women's team, NJIT won 18 matches, the highest wins total in nearly two decades going back to 1990, when the Highlanders, who then played at the Division III level, won 23 matches.

Championship-level volleyball is nothing new to Ryan McNeil, who was a standout player in both Canada and the United States. Later, as an assistant coach at Lewis University in Illinois, he helped coach the men's team that won the 2003 national championship match and the women's team that qualified for two NCAA Tournaments.

A native of Montego Bay, Jamaica, McNeil resided in Ontario, Canada, for 15 years. He was MVP of two college teams in Canada--Sheridan College and Ryerson University.

Transferring south of the border to Lewis University in Illinois, McNeil played on the Flyers' 1998 national semifinalists. He then turned to coaching at Lewis, assisting with both the men's and women's teams.

In his two years as an assistant with the Lewis men, they qualified for the NCAA tournament twice, won two Midwest Intercollegiate Volleyball Association crowns and captured the 2003 national title match. He coached with the Lewis women for four seasons and during his tenure the Flyers made the NCAA Tournament twice and achieved national ranking in 2002.

McNeil resides in Newark.





## COACHING STAFF



### Rodrigo Correa

*Assistant Coach, Men and Women*

A 2009 NJIT graduate, Correa is serving as an assistant coach with both the women's and men's volleyball teams.

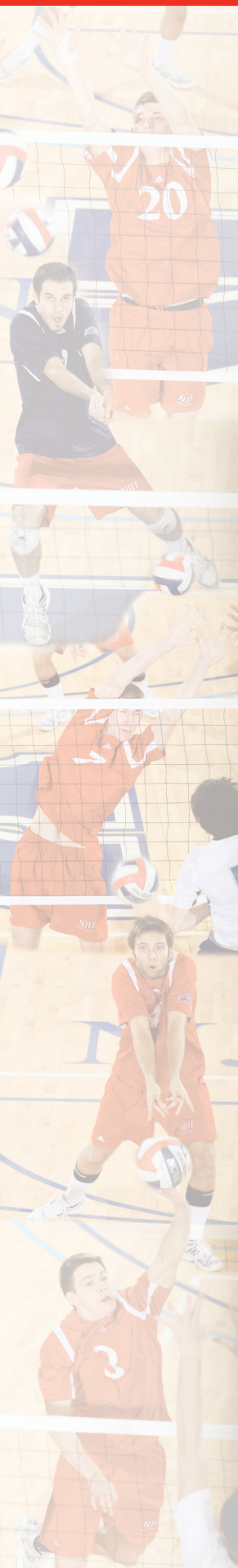
A 6-foot-4 setter who chose to pursue his studies at NJIT over an offer to play for Brazil's Junior National Team, Correa was a four-year starter and

the assists leader for the Highlanders, ranking 26th nationally in assists as a senior, 18th as a junior, and 20th as a sophomore.

A native of Sao Paulo, Brazil, and the son of an economist, Correa was a business management/finance major enrolled in NJIT's Albert Dorman Honors College.

He earned all-academic honors in the Eastern Intercollegiate Volleyball Association each of his last three seasons playing for NJIT.

He resides in Jersey City, NJ.





## 2011 ROSTER

### NUMERICAL

No.	Name	Yr.	Ht.	Wt.	Pos.	Hometown/High School
1	Herman Kantushov	Fr.	6-1	165	RS	Qiryat Ono, Israel / Rothberg
2	Matthew Lui	So.	6-1	150	S	Aiea, HI / Hawaii Baptist Academy
3	Adam Gustafson	Jr.	6-0	166	S/RS	Monee, IL / Providence Catholic
4	Andrei Stoyanow	So.	6-2	190	OH/S	Sao Paulo, Brazil / Novo Hamburgo
5	Brady Smith	So.	6-0	160	L	Kurtistown, HI / Waiakea
7	Kevin Van Oss	So.	6-8	190	OH	Dayton, OH / Archbishop Alter
8	Doug Battersby	So.	6-5	185	S/RS	Ringwood, NJ / Don Bosco Prep
9	Ryan Blondell	So.	5-10	151	L	Hamlin, NY / Brockport
11	Dhruv Lad	Fr.	6-1	195	OH	Old Bridge, NJ / Old Bridge
14	Andrew Green	Fr.	6-0	160	OH	Monmouth Junction, NJ / South Brunswick
16	Randall Malpass	Fr.	6-3	190	MB	Clinton, NC / Union
17	Adam Feehan	So.	6-1	155	M	Howell, NJ / Howell
18	Julian Diaz	Fr.	6-3	170	OH	Union City, NJ / Union City
20	Rafal Kierznowski	Fr.	6-6	175	OH/MB	Bayonne, NJ / Bayonne, NJ

### ALPHABETICAL

No.	Name	Yr.	Ht.	Pos.	Wt.	Hometown/High School
8	Doug Battersby	So.	6-5	185	S/RS	Ringwood, NJ / Don Bosco Prep
9	Ryan Blondell	So.	5-10	151	L	Hamlin, NY / Brockport
18	Julian Diaz	Fr.	6-3	170	OH	Union City, NJ / Union City
17	Adam Feehan	So.	6-1	155	M	Howell, NJ / Howell
14	Andrew Green	Fr.	6-0	160	OH	Monmouth Junction, NJ / South Brunswick
3	Adam Gustafson	Jr.	6-0	166	S/RS	Monee, IL / Providence Catholic
1	Herman Kantushov	Fr.	6-1	165	RS	Qiryat Ono, Israel / Rothberg
20	Rafal Kierznowski	Fr.	6-6	175	OH/MB	Bayonne, NJ / Bayonne, NJ
11	Dhruv Lad	Fr.	6-1	195	OH	Old Bridge, NJ / Old Bridge
2	Matthew Lui	So.	6-1	150	S	Aiea, HI / Hawaii Baptist Academy
16	Randall Malpass	Fr.	6-3	190	MB	Clinton, NC / Union
5	Brady Smith	So.	6-0	160	L	Kurtistown, HI / Waiakea
4	Andrei Stoyanow	So.	6-2	190	OH/S	Sao Paulo, Brazil / Novo Hamburgo
7	Kevin Van Oss	So.	6-8	190	OH	Dayton, OH / Archbishop Alter





## 2009-10 TEAM STATISTICS

RECORD:	OVERALL	HOME	AWAY	NEUTRAL
ALL GAMES	3-18	1-6	2-10	0-2
CONFERENCE	2-6	1-3	1-3	0-0
NON-CONFERENCE	1-12	0-3	1-7	0-2

#	Player	sp	Attack					Set		Serve			re	Dig			Blocking					bhe	points
			k	k/s	e	ta	pct	a	a/s	sa	se	sa/s		dig	dig/s	bs	ba	total	blk/s	be			
1	Puszies, Christian	69	320	4.64	167	753	.203	21	0.30	19	52	0.28	35	116	1.68	1	26	27	0.39	1	3	-	
7	Van Oss, Kevin	72	206	2.86	124	531	.154	7	0.10	11	44	0.15	12	47	0.65	4	34	38	0.53	4	0	-	
3	Gustafson, Adam	68	111	1.63	50	328	.186	266	3.91	8	21	0.12	8	133	1.96	9	44	53	0.78	8	0	-	
8	Battersby, Doug	72	91	1.26	58	248	.133	2	0.03	4	10	0.06	8	38	0.53	17	61	78	1.08	1	0	-	
16	Bell, Charles	33	64	1.94	34	148	.203	5	0.15	4	21	0.12	2	14	0.42	5	20	25	0.76	3	2	-	
4	Stoyanow, Andrei	46	57	1.24	53	221	.018	12	0.26	5	8	0.11	11	71	1.54	1	12	13	0.28	0	1	-	
2	Lui, Matthew	62	29	0.47	21	82	.098	532	8.58	8	25	0.13	1	99	1.60	3	14	17	0.27	1	4	-	
10	De Magalhaes, Glen	20	41	2.05	22	103	.184	6	0.30	0	12	0.00	2	44	2.20	0	7	7	0.35	1	0	-	
17	Feehan, Adam	9	17	1.89	4	34	.382	1	0.11	1	1	0.11	0	8	0.89	0	4	4	0.44	0	0	-	
19	Regalado, Marvin	17	5	0.29	8	25	-.120	0	0.00	2	3	0.12	0	1	0.06	1	6	7	0.41	2	0	-	
9	Blondell, Ryan	21	0	0.00	0	1	.000	0	0.00	2	2	0.10	1	6	0.29	0	0	0	0.00	0	0	-	
12	Hernandez, Rudy	8	1	0.12	4	7	-.429	2	0.25	0	1	0.00	3	4	0.50	0	0	0	0.00	0	0	-	
14	Richmond, Chuck	11	0	0.00	0	0	.000	0	0.00	1	0	0.09	0	2	0.18	0	0	0	0.00	0	0	-	
5	Smith, Brady	73	0	0.00	1	2	-.500	27	0.37	0	0	0.00	36	186	2.55	0	0	0	0.00	0	2	-	
	TEAM	-	-	-	-	-	-	-	-	-	-	-	8	-	-	-	-	-	-	-	-	-	
	NJIT	73	942	12.90	546	2483	.159	881	12.07	65	200	0.89	127	769	10.53	41	228	155.0	2.12	21	12	-	
	Opponents	73	1158	15.86	421	2485	.297	1088	14.90	127	319	1.74	64	832	11.40	41	377	229.5	3.14	27	6	-	

Team Statistics	NJIT	OPP
ATTACK		
Kills	942	1158
Errors	546	421
Total Attacks	2483	2485
Attack Pct	.159	.297
Kills/Set	12.9	15.9
SET		
Assists	881	1088
Attempts	2279	2293
Assist Pct	.387	.474
Assists/Set	12.1	14.9
SERVE		
Aces	65	127
Errors	200	319
Attempts	1735	1947
Serve Pct	.885	.836
Aces/Set	0.9	1.7
SERVE RECEPTIONS		
Errors	127	64
Errors/Set	1.7	0.9
Attempts	1633	1534
Reception Pct	.922	.958
DEFENSE		
Digs	769	832
Digs/Set	10.5	11.4
BLOCKING		
Block Solo	41	41
Block Assist	228	377
Total Blocks	155.0	229.5
Blocks/Set	2.1	3.1
Block Errors	21	27
Ball handling errors	12	6
ATTENDANCE		
Total	804	1735
Dates/Avg Per Date	7/115	12/145
Neutral site #/Avg	2/88	
Current win streak	1	-
Home win streak	0	-

Date	Opponent	Score	Score by set	Att.
Jan 08	at IPFW	L 0-3	24-30,25-30,24-30	371
Jan 09	at IPFW	L 0-3	23-30,16-30,27-30	308
*Jan 22	vs Saint Francis	L 0-3	22-30,27-30,26-30	60
*Jan 23	vs #14 Lewis	L 0-3	19-30,22-30,23-30	115
*Feb 03	at Sacred Heart	L 1-3	22-30,30-24,17-30,25-30	187
Feb 02	PRINCETON	L 0-3	24-30,21-30,26-30	75
Feb 08	at #2 Springfield College	L 0-3	17-30,20-30,15-30	110
*Feb 16	NYU	w 3-1	30-26,30-23,26-30,30-24	200
*Feb 19	SACRED HEART	L 2-3	28-30,30-24,24-30,30-22,12-15	124
*Feb 23	at Rutgers-Newark	L 0-3	22-30,24-30,19-30	85
*Mar 02	RUTGERS-NEWARK	L 0-3	26-30,24-30,26-30	115
*Mar 06	HARVARD	L 0-3	21-30,24-30,22-30	84
Mar 11	KING COLLEGE	L 2-3	24-30,30-27,30-26,21-30,19-21	55
03/12/10	at Nazareth	L 0-3	19-30,21-30,20-30	0
Mar 13	at D'Youville College	w 3-2	30-16,30-32,30-16,26-30,15-8	50
Mar 19	at PACIFIC	L 0-3	18-30,30-32,18-30	129
Mar 20	at PACIFIC	L 0-3	19-30,26-30,26-30	150
Mar 24	STEVENS	L 1-3	27-30,25-30,30-25,24-30	151
*Apr 13	at NYU	L 0-3	30-32,17-30,28-30	86
Apr 15	at Princeton	L 0-3	27-30,22-30,24-30	95
*Apr 17	at Harvard	w 3-1	25-30,30-17,32-30,34-32	164

Record in 3-set matches: 0-14

Record in 4-set matches: 2-2

Record in 5-set matches: 1-2



# 2009-10 RESULTS

Date	Opponent	Score	Score-by-set	Overall	Conf	Time	Att.
Jan 08	at IPFW	L	0-3 24-30,25-30,24-30	0-1	0-0	1:25	371
Jan 09	at IPFW	L	0-3 23-30,16-30,27-30	0-2	0-0	1:30	308
+ Jan 22	vs Saint Francis	L	0-3 22-30,27-30,26-30	0-3	0-0	1:15	60
+ Jan 23	vs #14 Lewis	L	0-3 19-30,22-30,23-30	0-4	0-0	1:15	115
* Feb 03	at Sacred Heart	L	1-3 22-30,30-24,17-30,25-30	0-5	0-1	1:49	187
Feb 02	PRINCETON	L	0-3 24-30,21-30,26-30	0-6	0-1	1:25	75
Feb 08	at #2 Springfield College	L	0-3 17-30,20-30,15-30	0-7	0-1	1:10	110
* Feb 16	NYU	W	3-1 30-26,30-23,26-30,30-24	1-7	1-1	1:50	200
* Feb 19	SACRED HEART	L	2-3 28-30,30-24,24-30,30-22,12-15	1-8	1-2	2:05	124
* Feb 23	at Rutgers-Newark	L	0-3 22-30,24-30,19-30	1-9	1-3	1:13	85
* Mar 02	RUTGERS-NEWARK	L	0-3 26-30,24-30,26-30	1-10	1-4	1:15	115
* Mar 06	HARVARD	L	0-3 21-30,24-30,22-30	1-11	1-5	1:15	84
Mar 11	KING COLLEGE	L	2-3 24-30,30-27,30-26,21-30,19-21	1-12	1-5	2:35	55
03/12/10	at Nazareth	L	0-3 19-30,21-30,20-30	1-13	1-5		
Mar 13	at D'Youville College	W	3-2 30-16,30-32,30-16,26-30,15-8	2-13	1-5	2:05	50
Mar 19	at PACIFIC	L	0-3 18-30,30-32,18-30	2-14	1-5	1:26	129
Mar 20	at PACIFIC	L	0-3 19-30,26-30,26-30	2-15	1-5	1:26	150
Mar 24	STEVENS	L	1-3 27-30,25-30,30-25,24-30	2-16	1-5	2hr	151
* Apr 13	at NYU	L	0-3 30-32,17-30,28-30	2-17	1-6	1:25	86
Apr 15	at Princeton	L	0-3 27-30,22-30,24-30	2-18	1-6	1:20	95
* Apr 17	at Harvard	W	3-1 25-30,30-17,32-30,34-32	3-18	2-6	1:56	164

Team Record	W-L-T	Attend	Dates	Total	Avg.
Overall:	3-18	Total:	21	2714	129
Conference:	2-6	Home:	7	804	115
Home:	1-6	Away:	12	1735	145
Away:	2-10	Neutral:	2	175	88
Neutral:	0-2				
3 sets:	0-14				
4 sets:	2-2				
5 sets:	1-2				





Beginning on September 1, 2009, the entire NJIT athletics program officially gained across-the-board active membership in NCAA Division I, completing a process that began officially in 2003.

NJIT, its teams, and student-athletes enjoy the full benefits of Division I membership, including eligibility for Division I postseason championship competition and the inclusion of the Highlanders among the national Division I leaders in statistics maintained by the NCAA.

Within months of NJIT's active Division I membership, the school won its first national Division I statistical championships, as women's volleyball player Sabrina Baby led the nation in digs per set, while she and her teammates captured the team digs crown for digs, as well.

The NCAA's decision making NJIT a full member of Division I completed a specific timetable that required NJIT and its Department of Athletics to meet a series of annual benchmarks before proceeding to the next step.

NJIT, which previously competed in NCAA Division II, first moved to reclassify its men's soccer program in 2003. The move grew out of November 2002 meetings among President Robert A. Altenkirch, Vice President Joel Bloom, and Director of Athletics Lenny Kaplan. From there, came a proposal from Dr. Altenkirch to the Board of Trustees, which unanimously approved in February 2003 a plan to reclassify men's soccer to Division I. Little more than two years later, the NCAA approved NJIT's proposal to begin advancing its entire program to Division I.

Men's soccer achieved active Division I status in 2005 and NJIT women's soccer became postseason-eligible in 2007. The remainder of NJIT's athletics program also began reclassifying in 2005, with active status taking longer for an entire program than under the single-sport-per-gender track used for the two soccer teams.

In 2005-06 the lion's share of the competition all but men's soccer came at the Division II level. In 2006-07, 2007-08, and 2008-09, NJIT's teams competed at the Division I level and complied full with NCAA Division I rules, but were not eligible for championships at the top level.

Every facet of the program has been enhanced in the reclassification, with a special emphasis placed on student-athlete welfare. Facility upgrades have gone along with sports medicine staff expansion, a strength and conditioning program, and academic enrichment. NJIT has also built a model NCAA Division I rules compliance regimen within its athletics program and across the entire university.

A key late benchmark in reclassification came in the spring of 2009, with NJIT's successful completion of the NCAA Division I certification self-study. An in-depth project that takes approximately one year to complete and involves an on-campus visit from a Peer Review team, Division I certification, renewable every 10 years, is required of all active Division I institutions.

"We completed a major milestone in demonstrating that we have the infrastructure in place and the commitment to compete at the highest levels, not only academically but now athletically as well," said Dr. Altenkirch, who made upgrading athletics a priority from the beginning of his tenure as the seventh President of NJIT in May 2002.

Professor Robert English, the NCAA Faculty Athletics Representative and Interim Dean of the School of Management, added, "I am very impressed with NJIT's student-athletes who have worked hard to meet the challenge of the heightened level of Division I competition and at the same time continued to excel academically, with many athletes earning academic honors and awards and several earning perfect 4.0 GPAs during the semester of competition."

Further, the NJIT Board of Trustees embraced the transition to Division I as part of the university's strategic plan to enhance the quality of campus life in NJIT's transition to a residential university.

Going back to early announcements of NJIT's NCAA reclassification plans, Altenkirch stated: "As NJIT continues to grow academically, and as a residential university, strengthening the athletics program through the transition to Division I will allow us to align the university with our academic peers."

Already, NJIT's teams have competed throughout the United States, taking on opponents from schools that are instantly recognizable for their stature in academics and athletics.

NJIT teams and student-athletes have faced opponents from seven of the eight Ivy League schools (all except for Brown) and all eight Patriot League schools, including Army and Navy, Bucknell, Lafayette, and Lehigh.

In addition, Highlander teams have taken on teams from such famed conferences as the Atlantic Coast Conference, Big East Conference, Big Ten Conference, and Pac 10 Conference, with competition against Missouri of the Big 12 Conference slated for December 2010 in women's basketball.

Two high-profile opponents--Maryland in men's soccer in 2005 and Penn State in men's volleyball in 2008—won national championships following the same regular seasons in which they faced NJIT.

The Highlanders have also competed against members of all of the conferences based in the Northeastern and Mid-Atlantic regions of the United States, including America East, Atlantic 10, Colonial, Metro Atlantic, Mid-Eastern, and Northeast.

The eighth New Jersey-based institution in Division I, NJIT has competed against all seven of its home state peers, including Big East programs Rutgers and Seton Hall.

NJIT's longest-established Division I program, men's soccer, gained its first win against a Big East foe in 2008, defeating Rutgers a year after topping San Diego State for the Highlanders' first win over a Top 25-ranked team.

With its place in Division I officially certified by the NCAA, NJIT is looking ahead to continued growth. That outlook is consistent with President Altenkirch's frequently expressed view that, "the transition to Division I is just that, a transition, a process rather than an event."

For his part, Director of Athletics Lenny Kaplan said: "We are looking forward to being a solid and successful member of Division I and we are excited by the opportunity to write a new chapter in the history of NJIT athletics."





# PROGRAM HISTORY

Year	Overall	League*	Div./Finish	Postseason	Head Coach	Captains	MVP
1971							Michael Wiercinski
1972							Michael Wiercinski
1973				ECVL playoffs			Lee McQuillin
1974				ECVL playoffs			Lee McQuillin
1975				ECVL playoffs			Lee McQuillin
1976				ECVL playoffs			Manny Martinez
1977				ECVL playoffs			Yves Etienne
1978				ECVL playoffs			Yves Etienne
1979				ECVL playoffs			Yves Etienne
1980				ECVL playoffs			Ray Elsmann
1981				ECVL playoffs			Paul Aloia
1982				ECVL playoffs			Jack Van Vladricken
1983				ECVL playoffs			Joe Pniewski
1984				ECVL playoffs			Danny Siryj
1985	12-5			ECVL playoffs	Oleg Moiseenko	Joe Pniewski	Joe Pniewski
1986	12-7		East/2nd	---	Oleg Moiseenko	Myron Petruch	Ted Laarkamp
1987	23-11		Atlantic/1st	EIVA quarters; No. 20 in nation	Oleg Moiseenko	Ted Laarkamp, Tom Rogers	Ted Laarkamp
1988	27-10		Atlantic/1st	EIVA quarters	Oleg Moiseenko	Jim Livolsi, Walt Szynalski	Rudy Romulus
1989	11-18	7-3	East/2nd	EIVA quarters	Dave DeNure	Mike Bensch, Rudy Romulus	Dave Trent
1990	20-16	6-2	East/2nd	EIVA quarters	Dave DeNure	Mike Bensch	Rudy Romulus
1991	24-14		East/2nd	EIVA quarters; EIVA DIII champs	Dave DeNure		
1992	19-16		East/2nd	EIVA DIII semis, IAC champs	Dave DeNure		
1993	20-10			EIVA quarters, EIVA DIII runner-up, IAC champs	Dave DeNure	Eric Wenstrom	Eric Wenstrom
1994	19-10			EIVA quarters, IAC champs	Dave DeNure	Brian Driesse	Tarik Rodgers
1995	20-13			EIVA DIII runner-up, IAC champs	Dave DeNure	Tarik Rodgers	
1996	18-11			EIVA DIII 1st round; IAC champs	Dave DeNure	Jon Bednasz	
1997	17-10			EIVA quarters, EIVA DIII champs	Dave DeNure	Jon Bednasz	Harold Nazaire
1998	17-8	5-1	Tait/T-1st	EIVA quarters, EIVA DII champs	Dave DeNure (175-126)		Wycliffe Gordon
1999	24-5		Tait	EIVA finals, EIVA DII champs	Manny Del Rio		Harold Nazaire
2000	16-12	8-6	Tait	EIVA semis	Manny Del Rio		Josh Zuidema
2001	5-19	2-12	Tait/7th	---	Manny Del Rio (45-36)	Fernando Fuentes	
2002	1-22	0-14	Tait/8th	---	Alex Lykouriotis (1-22)	Justin Meyer	Hunter Haliniak
2003	5-19	1-11	Hay/7th	---	Michael Borga	Ron Horn, Rob Miller	Ron Horn
2004	3-17	2-11	Sweeney/T-4th	---	Michael Borga (8-36)	Rob Miller, Ryan Walsh	Keith Samuel
2005	11-11	6-5	Sweeney/3rd	--	Ryan McNeil	Matt Thorkildsen, Brian Como	
2006	13-13	8-4	EIVA Hay/2nd	Lost EIVA Playoff 1st Round	Ryan McNeil	Brian Como, Eduardo Welter	Eduardo Welter
2007	19-10	9-1	EIVA Hay/1st	Lost EIVA Playoff 1st Round	Ryan McNeil	Mike Nonnenmann, Eduardo Welter	
2008	13-14	4-8	EIVA Tait/4th	EIVA Semifinals (lost to #11 George Mason, 3-2)	Ryan McNeil	Mike Nonnenmann, Eduardo Welter	
2009	3-23	0-12	EIVA Tait/7th	---	Ryan McNeil	Amobi Armstrong	
2010	3-18	2-6	EIVA Tait/7th	---	Ryan McNeil (62-89)		

\*--league was known as the ECVL (Eastern Collegiate Volleyball League) through 1985 and was renamed EIVA (Eastern Intercollegiate Volleyball Association) thereafter. IAC Independent Athletic Conference, a separate multi-sport organization. League record and Division listed is for ECVL and EIVA.

Note: All blank information is missing from the NJIT files. Anyone with documented information, or correction to the above is asked to contact the sports information office at (973) 596-8461 or timothy.camp@njit.edu.

## ALL - AMERICANS / ACADEMIC ALL - AMERICANS

### NJIT ALL-AMERICANS

**1995**

**Tarik Rogers** – ASICS Small College Player of the Year

**1997**

**Harold Nazaire** – AVCA First Team

**1998**

**Wycliffe Gordon** – AVCA Second Team

**Harold Nazaire** – AVCA Second Team

**1999**

**Harold Nazaire** – AVCA First Team

### ACADEMIC ALL-AMERICANS

**1990**

**Rudy Romulus** – GTE

**1991**

**Rudy Romulus** – GTE

### EIVA ALL-ACADEMIC HONORS

**2010**

**Adam Gustafson**  
Bio-Medical Engineering

**2008**

**Rodrigo Correa**  
Management  
**Leonardo Paludo**  
Management

**2009**

**Rodrigo Correa**  
Management

**Eddie Welter**  
Management  
**Greg Wagner**  
Computer Science

**2007**

**Rodrigo Correa**  
Management  
**Leonardo Paludo**  
Management  
**Eddie Welter**  
Management  
**Greg Wagner**  
Computer Science

In October 2007, the Prudential Center ushered in a new era in sports and entertainment in Newark and the entire northern New Jersey area.

Newark is in the midst of a major revitalization, converting the city core into a vibrant and energized entertainment district.

The Prudential Center, the New Jersey Performing Arts Center, The Newark Symphony, Bears and Eagles Riverfront Stadium and in 2010, Red Bull Arena in nearby Harrison represent just part of the nearly \$2 billion in construction underway.

Prudential Center is the cornerstone in the revitalization and renaissance of downtown Newark. In addition to the arena, Newark will soon add scores of condominiums, restaurants, themed bars and mixed retail establishments. Prudential Center, one of the finest arenas in the country, is New Jersey's home for hockey, college basketball, indoor soccer, concerts, family shows and special events.

A public/private partnership between the City of Newark and Devils Arena Entertainment made the \$375 million Prudential Center a reality that is changing the face of downtown Newark and making it a destination place for sports and live entertainment in the region.

Bounded by Edison Place to the north, Lafayette Street to the south, Mulberry Street to the east and Broad Street and City Hall to the west, "The Rock" is located about a mile from NJIT's University Heights campus. Known best as the home of the National Hockey League New Jersey Devils, the Prudential Center has a seating capacity of 17,625 for hockey and up to 18,500 for basketball.

Featuring a 4,800 square-foot exterior LED screen, as well as two club lounges, a goal bar, terrace area and a 350-seat gourmet restaurant, along with 76 Luxury Suites and two Event Suites, the Prudential Center is big league in every way.

The relationship between NJIT and the Prudential Center is a natural. "The Rock" is the centerpiece of Newark's Downtown Core Redevelopment Project. NJIT, meanwhile, is an integral part of the city's educational, civic and economic life.

The arrival of the spectacular Prudential Center nearly coincides with NJIT's arrival as an NCAA Division I institution—the first in Newark and the newest in New Jersey in more than 20 years. The Rock opened one year after NJIT began Division I competition as part of its NCAA reclassification which is now complete.

In the arena's inaugural year, NJIT played host to six basketball games on four dates, including four men's basketball games and two women's games. Included was the first women's or girls' sports competition in the building's history, when the Highlanders entertained Cornell on January 15, 2008.



The Highlanders hosted five more men's and women's college basketball games in the state-of-the-art building and are set to host four games in 2009-10. Further, NJIT's club ice hockey team plays all of its home games in the full-size Devils practice rink facility (AmeriHealth Pavilion), which adjoins the main arena and has an 800-seat capacity.

The Prudential Center, located in downtown Newark, about a mile from NJIT's University Heights campus, is easily accessible by mass transit or by automobile.

"The Rock" is located a short walk from regional mass transportation hub Newark Penn Station, which is served by Amtrak and New Jersey Transit trains, not to mention the Newark City Light Rail, which has a stop (Warren Street Station) at the NJIT campus just a few feet from the entrance of Fleisher Athletic Center and J. Malcolm Simon Stadium at Lubetkin Field.

Highways passing near the arena include: I-78, I-280, the NJ Turnpike, Garden State Parkway, Routes 1 & 9, 21, and 22.

There are over 3,500 parking spaces within two blocks of the arena and way-finding signage, guest services personnel and security will assist in getting you to your destination (Please note: all of the parking lots are owned independently, with the exception of the VIP Parking Deck (Lot 10) located on Lafayette Street at the corner of Broad and Lafayette).

## DRIVING DIRECTIONS TO THE PRUDENTIAL CENTER

For GPS users, the address is 165 Mulberry Street, Newark, NJ, 07102

### From the New Jersey Turnpike

#### Southbound—

—Exit 15 W to I-280 westbound. Turn right on Exit 15 A toward Route 21 southbound. Turn right onto Rector Street. Turn left onto Broad Street

southbound. Continue on Broad Street to Lafayette Street and turn left. Prudential Center will be on your left.

#### Northbound—

—Exit 14 toward I-78 westbound. Take center ramp after the toll booth toward US 1-9/Rt. 21. Keep right to stay on the ramp toward US 1-9. Continue on US 1-9 approx. 3 miles and exit on the right onto Rt. 21 (McCarter Highway). Bear left onto Broad Street northbound. Continue on Broad Street to Lafayette Street and make a right. Prudential Center will be on your left.

### Garden State Parkway

#### Southbound or northbound—

—Exit 145. Follow signs to I-280 eastbound. Exit 15 (Route 21-Downtown/Arts). At bottom of ramp (traffic light). Turn right onto Route 21 South. Continue on Rt. 21 to Raymond Boulevard. Turn right onto Raymond Blvd. and then left onto Mulberry Street. The Prudential Center will be visible ahead on your right.

### From Newark Liberty International Airport

Follow signs for Routes 1 and 9 North via the ramp to State Hwy 21. Slight left at Rt 21 (signs for Newark/US 22/State Hwy 21). Turn left at Edison Place. Turn left at Mulberry Street (door-to-door distance is approx. 4.4 miles).

### From New York City

—From George Washington Bridge or Lincoln Tunnel, follow signs to New Jersey Turnpike and then follow directions above for New Jersey Turnpike southbound.

—From Holland Tunnel, follow signs to I-78 westbound and take center ramp after the toll booth toward US 1-9/Rt. 21. Keep right to stay on the ramp toward US 1-9. Continue on US 1-9 approx. 3 miles and exit on the right onto Rt. 21 (McCarter Highway). Bear left onto Broad Street northbound. Continue on Broad Street to Lafayette Street and make a right. Prudential Center will be on your left.



The NJIT basketball teams will have home games this season in the downtown Newark Prudential Center and on-campus in the recently-renovated gymnasium of the Estelle and Zoom Fleisher Athletic Center.

“The Rock”, located about a mile from NJIT’s University Heights campus, opened in October 2007 as the new home of the National Hockey League New Jersey Devils. NJIT basketball has played there in each of the building’s first two seasons and the Highlanders will return for two doubleheaders in February 2010.

The Fleisher Athletic Center gym, also home to NJIT’s volleyball teams, underwent renovation in the summer of 2006. Included in the makeover was installation of a new floor and baskets and a repositioning of the main playing court.

The gym also got new lighting, a new sound system and new scoreboards, along with entirely new seating for more than 1,000 spectators after the first phase of renovation. Future plans include the addition of more seating, which will nearly double the seating capacity while maintaining the up close-feel that puts spectators next to the action and contributes to the homecourt advantage.

The back bay ‘C gym’ can be sectioned off from the main competition floor, making the facility useful for intramurals, physical education classes and campus recreation time, while being able to host multiple simultaneous events.

The NJIT basketball teams also have full access to the other facilities in the Fleisher Center. These



include the fitness area (containing computer-controlled biking equipment, Cybex resistance units and an indoor track), a free-weight room, four racquetball courts (which can be converted for squash), a martial arts center and an aerobics dance studio.

A six-lane swimming pool in Fleisher Athletic Center is home to the NJIT men’s and women’s swimming teams, while the two varsity tennis squads play on the four outdoor lighted tennis courts behind Fleisher Athletic Center. The NJIT Campus Center houses six regulation bowling lanes.

Lubetkin Field at J. Malcolm Simon Stadium, with its entrance a few feet from the entrance of the Fleisher Athletic Center, is a first-class venue for college soccer.

Outfitted with SprinTurf artificial grass in the summer of 2004, the complex also includes lighting for night contests, bleacher seating for more than 1,000 spectators, a press box and scoreboard. The installation of the new surface, a walking track and new landscaping was done at a cost of \$1.2 million.

Bears and Eagles Riverfront Stadium, opened in 1999 at a cost of \$30 million and with a seating capacity of 6,200, became the home of NJIT baseball in 2004. In a joint December 2005 press conference, New York Yankees manager Joe Torre was a featured speaker as NJIT and the Newark Bears announced a 10-year partnership that designated the downtown stadium the home of all Highlanders home games for the decade to come.

NJIT, which offers a growing list of club sports, also has a robust intramural program, which makes use of the numerous athletic facilities.





## Newark: The Renaissance City

NJIT is located in the heart of New Jersey's largest city, Newark, with a population of over 300,000, making it the 65th-largest city in the United States. A major urban center, Newark is a city on the move.

Attractions in Newark include:

- **The Prudential Center**, a major indoor entertainment and sports venue housing New Jersey Devils hockey, New Jersey Nets basketball, major concerts and other premier events
- **New Jersey Performing Arts Center**
- **The Newark Museum**
- **The Newark Public Library**
- **Symphony Hall**
- **Branch Brook Park**
- **Art galleries, restaurants, shopping**
- **The Ironbound neighborhood**, renowned for its dining and vibrant nightlife
- **An urban architectural laboratory**
- **Professional minor league baseball (Newark Bears)**



## Newark: New Jersey's College Town

Some 30,000 undergraduate, graduate, and professional students attend classes in the University Heights section, which is home to NJIT, Rutgers-Newark, the University of Medicine and Dentistry of New Jersey (UMDNJ), and Essex County College.

Adjacent to NJIT to the east, is the Newark campus of Rutgers University and the two schools enjoy an exceptionally close and productive relationship. NJIT and Rutgers students have library privileges at both campuses. NJIT students may also enrich their educational experience by enrolling in Rutgers-Newark courses and in full degree programs in disciplines not offered by NJIT, such as art, music, geology, and psychology.

Each year, the two universities co-sponsor a common season of theatrical productions, as well as 'World Week', a joint program of honors colloquia, and a variety of other cultural and social activities.

NJIT also enjoys a cooperative relationship with its neighbor to the west in the University Heights area, UMDNJ, with several joint degree programs.

## New Jersey/New York Metropolitan Region

NJIT and Newark are a part of a region that is a magnet not only to the rest of the United States, but also to the world.

In Newark and neighboring northern New Jersey alone, attractions such as the Prudential Center, New Jersey Performing Arts Center, Meadowlands Sports Complex, Red Bull Arena, Liberty Science Center, and numerous others are minutes away by car and in most cases accessible by public transportation. Literally dozens of shopping malls are within a 20-minute drive of Newark, as well.

Midtown Manhattan, with all that it and the rest of New York City offer, is less than 15 miles from the NJIT campus.

NJIT students have regular access to discount tickets for Broadway shows, museums, concerts, and sporting events.

The school also sponsors weekend trips throughout the northeastern United States, with activities such as skiing, boating, swimming, hiking, and more.

The spectacular Jersey shore is less than an hour away by car and winter sports are within a couple of hours drive to the west and north.





**NJIT, with its campus in Newark, NJ, sits in a region that abounds with major professional sports unlike any other in the United States and perhaps in the world. There are nine teams in the major professional leagues (MLB, NFL, NBA, and NHL) located in New York City, northern New Jersey and Long Island.**

Only one of nine major teams is more than 25 miles from Newark, but most, including the New Meadowlands Stadium (Giants and Jets NFL football), Madison Square Garden (NBA Knicks, NHL Rangers), are much closer.

The three closest professional sports venues (listed below) are within three miles of NJIT's campus and can be accessed in a matter of minutes at low cost by public transportation, beginning with Newark Light Rail, from campus.

## Prudential Center

The home of the National Hockey League New Jersey Devils and the New Jersey Nets of the National Basketball Association is in downtown Newark at the corner of Mulberry and Edison streets, about one mile from the NJIT's University Heights campus.

### *Prudential Center*



*Red Bull Arena*

Opened in October 2007, 'The Rock' is the centerpiece of the city's Downtown Core Redevelopment Project. In addition to NHL hockey and NBA basketball, it has hosted numerous entertainment and sporting events, including NJIT basketball.

NJIT played basketball in the Rock in the inaugural year and in each year since. Indeed, NJIT hosted the first women's basketball game ever played in the Prudential Center on January 15, 2008 (NJIT vs. Cornell).

The arena, with full-capacity seating for 18,500 spectators, features a 4,800 square-foot exterior LED screen, as well as the latest in ice-surface technology and a gourmet restaurant overlooking the ice for Devils games. The building contains 850,000 square feet of space, 9,000 tons of steel, eight million pounds of structural steel and 25,000 cubic yards of concrete.



*Bears and Eagles Riverfront Stadium*

## Red Bull Arena

Located in Harrison, NJ, just across the Passaic River from Newark and less than three miles from the NJIT campus, the new home of the New York Red Bulls (opened in March 2010) sets the standard for soccer venues across North America.

The state-of-the-art soccer-specific facility is a major component of a multi-billion dollar development.

Red Bull Arena has a number of key design elements which give its seating bowl a close-to-the-action feeling and the unique stadium roof design extends from its leading edge over the entire seating bowl and then curve down to the concourse.

The overall seating capacity for soccer is 25,000, including 30 luxury suites (20 lower level and 10 upper level) and 1,116 club seats. Other amenities include three stadium clubs and two retail outlets.

## Bears and Eagles Riverfront Stadium

Bears and Eagles Riverfront Stadium, the \$30 million state-of-the-art home of the professional baseball Newark Bears and since 2004 the home of NJIT Highlanders baseball, officially opened to the public on July 16, 1999. With a seating capacity of 6,200, "The Den" affords fans an up-close view of the action. The ballpark also has 20 luxury suites, a picnic area, a party deck, a concert stage situated behind the outfield wall and a major league-caliber press box.

In December 2005, NJIT and the Bears held a joint press conference to herald a new partnership that includes a 10-year deal that extends Bears and Eagles Riverfront Stadium as the home of NJIT Highlanders baseball.

# NJIT HALL OF FAME

Name	Grad. Year	Contribution	Sport (s)	Years Active	Year of Induction
BAKUN, Andrew I.	1982	Athlete/Asst. Coach	M-Soccer	1978-81/90-91	2005
BAKUN, Myron	1967	Athlete	M-Soccer	1964-66	1991
BARTH, Roland E.	1960	Athlete	M-Fencing	1957-59	2009
			M-Soccer	1956-59	
BAUDER, Fred "Coach"	--	Coach	M-Basketball	1932-61	1989
BLUM, Raymond E.	1950	Distinguished Alumnus	Speedskating/Cycling	--	1996
BORJA, Hernan "Chico"	1981	Athlete	M-Soccer	1977-80	1986
BORNAKO, Gregory "Egor"	1970	Athlete	M-Fencing	1966-70	1987
BOWSER, Hamilton V.	1952	Athlete	M-Fencing	1948-52	1989
BRADLEY, Thomas	1978	Athlete	M-Swimming	1974-78	1990
BROWN, Andrew D.	1963	Athlete	M-Soccer	1956-59	2006
CRIMMINS, David	1952	Athlete	M-Fencing	1948-52	2007
CRUZ, Edward	1963	Athlete	M-Soccer	1959-62	1995
DAWSON, Marilyn E.	1986	Athlete	WVB/WBKB/SB	1982-86	1991
DeNICOLA, Carmine P.	1978	Athlete	Baseball	1975-78	2005
DeNURE, Dave	--	Coach	M-Volleyball	1982-98	2009
			W-Volleyball	1986-90	
			W-Basketball	1987-88	
DeVITO, Louis	1960	Athlete	M-Soccer/M-Fencing	1956-60	1992
DIAZ, Joe A.	1977	Athlete	M-Soccer	1973-76	1993
DRURY, Eugene M.	1963	Athlete	M-Tennis	1960-63	1988
ENG, Katherine	1993	Athlete	W-Volleyball	1989-92	2007
ETIENNE, Yves	1979	Athlete	M-Volleyball	1976-78	1990
FEHN, Gilbert F.	1940	Athlete	M-Basketball/M-Tennis	1936-40	1992
FITZGERALD, Joseph M.	--	Coach/Asst. Coach	M-Basketball	1961-66/52-61	1986
FLEISHER, Seymour "Zoom"	1951	Athlete	M-Basketball	1947-51	1992
GAGLIARDO, Salvatore A.	1985	Athlete	M-Basketball	1981-85	1995
GALLAGHER, Thomas G.	1985	Athlete	M-Basketball	1981-85	1991
GIOVANNOLI, Arnold L.	1953	Athlete	M-Basketball	1950-53	1993
GOLDRICK PITT, Elizabeth M.	1990	Athlete	WVB/SB/WBKB/WTen	1985-90	1995
GRAZIANO, Jean M.	1989	Athlete	Softball	1986-89	2009
GRUENEWALD, Wendy A.	1997	Athlete	WBKB/SB/WVB/WSoc	1992-96	2003
HAASE, Jay W.	1975	Athlete	M-Fencing	1971-75	1988
HAMMOND, Kenneth W.	1979	Athlete	M-Soccer	1974-77	2003
HANDWERKER, Andy	1963	Athlete	M-Soccer	1959-62	2002
HAUSSER, Paul C.	--	Administrator	--	1953-91	1990
		Coach	Fencing/Baseball	1954-88/53-72	
HUBEY, Ali	1972	Athlete	M-Soccer	1968-71	1990
HURTADO, Fabian	1975	Athlete	M-Soccer	1970-74	1987
IRIS, Herb	1951	Benefactor	--	--	2007
KAMINSKY, Nicholas J.	1978	Athlete	Baseball	1975-78	2006
KASBARIAN, Raymond P.	1966	Founder/Athlete	Judo	1962-66	1989
KETZNER, Robert Shelby	--	Coach	Rifle	1962-86	1987
KHOWAYLO, Alex	1969	Athlete	M-Soccer	1960-63	1996
LUBETKIN, Charles "Tudy"	1953	Athlete	M-Basketball/M-Track	1949-52	1994
LYNCH, Robert K.	1984	Athlete/Coach	M-Fencing	1977-80/86-91	1993
MacDONALD, Dan	1984	Athlete	Baseball	1981-84	1992
OLSEN, Richard J.	1969	Athlete	M-Basketball	1965-69	1988
OLSON, George R.	1977	Athlete	Baseball	1974-77	1987
PAULIUS, Raymond V.	1985	Athlete	M-Soccer	1980-83	2006
RODGERS, Tarik	1996	Athlete	M-Volleyball	1992-95	2010
ROGERS, Warren	1988	Athlete	M-Basketball	1983-87	1993
ROMULUS, Rudy	1991	Athlete	M-Volleyball	1988-91	1996
ROSS, Jonathan A.	1956	Athlete	M-Soccer	1953-55	2010
SARLO, Paul A.	1992	Athlete	Baseball	1989-91	2005
SCHMID, John "Gene"	--	Asst Coach/Coach	Baseball	1968-72/73-97	2002
SIMON, J. Malcolm	--	Coach	M-Soccer	1955-83	1994
		Director of Athletics	--	1983-94	
SKURLA, Peter J.	1941	Athlete	Bowling	1937-41	1992
SORIANO, Gregory	1975	Athlete	M-Fencing	1968-72	2010
SWANSON, Robert F.	--	Director of Athletics	--	1947-82	1986
TAETZSCH, Robert	1952	Athlete	M-Fencing	1948-52	2007
TAETZSCH, William	1952	Athlete	M-Fencing	1948-52	2007
TOSATO, Lawrence P.	1956	Athlete	M-Basketball/Baseball	1952-56	1987
TUBELLO, Jeffrey	1976	Athlete	Rifle	1972-76	1988
VAN WRIGHT, Nevea	1997	Athlete	W-Basketball	1991-96	2005
WALSH, John J.	1966	Athlete	MSoc/MBKB/Baseball	1962-66	1986
WASNIEWSKI, Frank	1980	Athlete	M-Tennis	1977-80	1990
WELGOS, Bob	1962	Athlete	M-Basketball/Bowling	1959-62	2005
WOROBEC, Myron S.	1966	Athlete	M-Soccer	1962-65	1994
YONEZUKA, Yoshishada	--	Founder/Coach	Judo	1962-?	1991
ZORN, Werner	1962	Athlete	M-Soccer	1958-61	1988
Teams	Year	Accomplishments	Year of Induction		
Men's Soccer	1960	NAIA co-National Champion	1988		
Men's Basketball	1981-82	NJIT's first ECAC and IAC champion	1990		
Baseball	1982	NJIT's second ECAC and IAC champion	1993		



## FOR GPS USERS

The address for Lubetkin Field at J. Malcolm Simon Stadium and the Estelle and Zoom Fleisher Athletic Center is 80 Lock Street, Newark, NJ, 07102

## BY CAR

### New Jersey Turnpike: Driving North from South Jersey:

Take NJ Turnpike to Exit 13A Newark Airport. After toll stay to left and follow signs to Rt. 1 & 9 North. You will merge onto Rt. 1 & 9 North. Airport will be on right. Follow signs for downtown Newark and Rt. 21 North (left lane exit ramp). Downtown Newark will be in front of you. NYC will be off to your right. Follow Rt. 21 North (McCarter Highway). Turn left on Raymond Blvd. Follow Raymond Blvd. past Warren Street traffic light and Fleisher Athletic Center & Lubetkin Field at J. Malcolm Simon Stadium will be to your right (one soccer goal line runs along Warren Street and the soccer sideline parallels Lock Street).

### New Jersey Turnpike: Driving South from North Jersey:

Take exit 15W to Route 280 West, then follow Route 280 West directions.

**Route 280 West:** After drawbridge, take Exit 15A (Rt. 21 South - McCarter Highway). Follow Rt. 21 South to Raymond Blvd. Turn right on Raymond Blvd. Follow Raymond Blvd. past Warren Street traffic light and Fleisher Athletic Center & Lubetkin Field at J. Malcolm Simon Stadium will be to your right (one soccer goal line runs along Warren Street and the soccer sideline parallels Lock Street).

**Route 280 East:** Take Exit 15 (Rt. 21 South - McCarter Highway). Follow Rt. 21 South to Raymond Blvd. Turn right on Raymond Blvd. Follow Raymond Blvd. past Warren Street traffic light and Fleisher Athletic Center & Lubetkin Field at J. Malcolm Simon Stadium will be to your right (one soccer goal line runs along Warren Street and the soccer sideline parallels Lock Street).

### Garden State Parkway (North & South bound):

Take exit 145 to Route 280 East, then follow Route 280 East directions.

**Route 1 & 9 North & South:** Take exit marked Newark, Rt. 21 North (McCarter Highway). Follow Rt. 21 North (McCarter Highway). Turn left on Raymond Blvd. Follow Raymond Blvd. past Warren Street traffic light and Fleisher Athletic Center & Lubetkin Field at J. Malcolm Simon Stadium will be to your right (one soccer goal line runs along Warren Street and the soccer sideline parallels Lock Street).

**Route 78 East:** Take Route 78 East to Rt. 21 North. Turn left on Raymond Blvd. Follow Raymond Blvd. past Warren Street traffic light and Fleisher Athletic Center & Lubetkin Field at J. Malcolm Simon Stadium will be to your right (one soccer goal line runs along Warren Street and the soccer sideline parallels Lock Street).

**Route 22 East:** Take Route 22 East to Route 21 North. Turn left on Raymond Blvd. Follow Raymond Blvd. past Warren Street traffic light and Fleisher Athletic Center & Lubetkin Field at J. Malcolm Simon Stadium will be to your right (one soccer goal line runs along Warren Street and the soccer sideline parallels Lock Street).



**Route 21 North:** Follow Rt. 21 North to Raymond Blvd. Turn left onto Raymond Blvd. Follow Raymond Blvd. past Warren Street traffic light and Fleisher Athletic Center & Lubetkin Field at J. Malcolm Simon Stadium will be to your right (one soccer goal line runs along Warren Street and the soccer sideline parallels Lock Street).

**Route 21 South:** Follow Rt. 21 South (McCarter Highway) to Raymond Blvd. Turn Right on Raymond Blvd. Follow Raymond Blvd. past Warren Street traffic light and Fleisher Athletic Center & Lubetkin Field at J. Malcolm Simon Stadium will be to your right (one soccer goal line runs along Warren Street and the soccer sideline parallels Lock Street).

**New York Thruway:** Thruway to Exit 14A, Garden State Parkway. Follow Garden State Parkway directions above.

**George Washington Bridge:** NJ Turnpike South to Exit 15W. Follow Route 280 West directions above.

**Lincoln Tunnel:** West on Rt. 3 to Rt. 21 South. Turn right onto Raymond Blvd. Follow Raymond Blvd. past Warren Street traffic light and Fleisher Athletic Center & Lubetkin Field at J. Malcolm Simon Stadium will be to your right (one soccer goal line runs along Warren Street and the soccer sideline parallels Lock Street).

**From Brooklyn, Queens and Long Island:** Take Verrazano-Narrows Bridge (Interstate 278) and follow 278 across Staten Island. Cross Goethels Bridge. Follow signs to New Jersey Turnpike North then follow New Jersey Turnpike directions above.

## PARKING

**Bus/Van Parking:** Visiting buses and vans may usually park on Lock Street adjacent to the athletic center. Please be careful not to block the parking space reserved for the doctor.

**Visitor Parking:** Visitor parking may be reserved in advance through your host. Otherwise, visitor parking at NJIT is available in the NJIT parking deck. Turn right onto Warren Street. Turn right onto Colden Street and proceed around the block to Summit Street. Parking Deck entrance is located to your right before the intersection with Warren Street.

### Parking for on-campus athletic contests:

NJIT is offering free off-street parking for fans attending regular season home soccer matches, volleyball games and basketball games. The parking entrance, marked by a sign, is located across Warren Street from the soccer field.

## OTHER TRANSPORTATION SYSTEMS

**Newark Liberty International Airport:** Minutes from the NJIT campus. A minibus (Newark Airlink) or taxi service connects the airport with Penn Station in Newark. Bus, Newark Light Rail, and taxi connections are available at the station.

**Newark Penn Station:** Located in downtown Newark, connections to the NJIT campus may be made by bus, Newark Light Rail, or taxi.

**Morris & Essex Broad Street Station:** A five-block walk to the NJIT campus via MLK Boulevard to Central Avenue. Taxi service is also available.

**Newark Light Rail:** From Penn Station in Newark, take the Warren Street stop for the NJIT campus. The Warren Street stop is on the sidewalk behind the press box for Lubetkin Field at J. Malcolm Simon Stadium.

## OFFICIAL HOTEL OF THE HIGHLANDERS

### SpringHill Suites Newark Liberty International Airport

652 Route 1 & 9 South, Newark, NJ  
973/624-5300 (ask for Melanie Schellhas)  
ASK FOR SPECIAL NJIT HIGHLANDERS RATE (discount code NJIS for kings, NJIT for doubles)

## DOWNTOWN

### Hilton Newark Gateway

Gateway Center, Raymond Boulevard & McCarter Highway  
Newark, NJ, 973/622-5000

### Robert Treat Hotel

50 Park Place, Newark, NJ, 973/622-1900

### Hampton Inn & Suites Newark Riverwalk

100 Passaic Ave, Harrison, NJ, 973/483-1900

## NEAR NEWARK LIBERTY INTERNATIONAL AIRPORT

### Best Western Newark Airport West

101 International Way, Newark, NJ, 973/621-6200

### Hilton Newark Airport

1170 Spring Street, Elizabeth, NJ, 908/351-3900

### Holiday Inn Newark Liberty International Airport

160 Frontage Road, Newark, NJ, 973/589-1000

# EASTERN INTERCOLLEGIATE VOLLEYBALL ASSOCIATION



NJIT men's volleyball is a member of the Eastern Intercollegiate Volleyball Association. The EIVA, which is the top college volleyball circuit in this part of the United States, contains 11 members representing athletics

programs from NCAA Division I and NCAA Division III.

The champion of the EIVA playoffs receives an automatic qualifier into the four-team NCAA National Collegiate Championship. The other three teams in the NCAA championship tournament are: the champions of the Mountain Pacific Sports Federation, Midwestern Intercollegiate Volleyball Association and an at-large team from one of the three major men's volleyball leagues (EIVA, MIVA, MPSF).

In 2008, Penn State, ranked first in the nation during the regular season with just one loss, won the EIVA playoffs and went on to capture the NCAA championship, as well.

Founded in 1971 as the Eastern Collegiate Volleyball League, the EIVA was given its current name in 1985. Penn State made EIVA and NCAA history in 1994 by becoming the first non-California school to win the national title.

The league has been realigned several times, with a major move occurring before the 2006 season. In 2004 and 2005, the EIVA had three divisions, but the alignment was dropped back to two divisions—the Tait and the Hay—for 2006.

The EIVA groups its divisions based on power ratings, with the higher power-rated teams aligned in the Tait Division. To account for changes in the relative strength of the teams, the EIVA has a system of promotion and relegation similar to European soccer. At the end of the season, the champion of the second power-rated division (Hay) is promoted to the Tait for the following season. Meanwhile, the bottom team in the Tait is relegated to the Hay Division for the following season.

As the 2007 EIVA Hay Division champion, NJIT earned promotion to the EIVA Tait Division. In 2010, NJIT returned to the Hay Division after two years in the Tait. For 2010, the two-division alignment remains, with NJIT grouped in the Hay alongside Harvard, Juniata, New York University, and Sacred Heart. The Tait Division includes George Mason, Juniata, Penn State, Princeton, Rutgers-Newark, Saint Francis, and Springfield.

NJIT reached the EIVA finals in 1999, losing to Penn State, and returned to the semifinals in 2000. The Highlanders won the now-defunct EIVA Division II Tournament in 1998 and 1999. Prior to reclassifying to Division II, they won the EIVA Division III championship (also no longer contested) in 1991 and 1997 and were the Division III runners-up in 1993 and 1995.

In 2008, NJIT made its deepest run into the EIVA playoffs since 2000. The 2008 Highlanders won their first two playoff matches to reach the EIVA semifinals, hosted by Penn State. NJIT's 2008 run came to an end in a tightly-contested 3-2 (lost set 5, 13-15) to #11 in the nation George Mason.

More information is available at the official website of the EIVA [www.eivavolleyball.com](http://www.eivavolleyball.com)

## 2010 EIVA Standings

<b>TAIT</b>	<b>Division</b>	<b>Overall</b>
Penn State	10-0	25-7
Princeton	5-5	15-10
George Mason	4-6	8-19
Springfield	4-6	20-11
Saint Francis	4-6	12-15
Juniata	3-7	9-13

<b>HAY</b>	<b>Division</b>	<b>Overall</b>
Rutgers-Newark	8-0	13-13
Sacred Heart	5-3	18-11
Harvard	3-5	5-16
NYU	2-6	6-17
NJIT	2-6	3-19

## EIVA Playoffs

### EIVA Championship

#1 Penn State def. #2 Princeton - 3-0 (30-28, 30-27, 30-13)

### Hitting Percentage

1. Lance Rogers, George Mason	.513
2. Max Lipsitz, Penn State	.507
3. Jon Keller, Rutgers-Newark	.505

### Kills per game

1. Jordan Varee, Saint Francis	5.15
2. Matt Jones, Harvard	5.03
3. Christian Puszies, NJIT	4.59

### Blocks per game

1. Jon Keller, Rutgers-Newark	1.96
2. Max Lipsitz, Penn State	1.67
3. Lance Rodgers, George Mason	1.50

### Aces per game

1. Jeff Zornig, Rutgers-Newark	1.14
2. Will Price, Penn State	0.63
3. Dane Mulligan, Rutgers-Newark	0.47

### Digs per game

1. Dennis Del Valle, Penn State	3.76
2. Anthony Damiano, Juniata	2.95
3. John Wappler, Saint Francis	2.83

### Assists per game

1. Scott Liljestrom, Princeton	13.32
2. Eric Shoemaker, Springfield	12.93
3. Edgardo Goas, Penn State	12.90





### 2011 HIGHLANDERS MEN'S VOLLEYBALL

(Back Row, L-R) Assistant Coach Daniel Cruz, Andrei Stoyanow, Andrew Green, Herman Kantushov, Brady Smith, Assistant Coach Rodrigo Correa, Ryan Blondell, Adam Feehan, Adam Gustafson, Matthew Lui, Dhruv Lad, Assistant Coach Andrew Bennett

(Front Row, L-R) Kevin Van Oss, Doug Battersby, Julian Diaz, Head Coach Ryan McNeil, Marvin Regaldo, Randall Malpass, Rafal Kierznowski



# 2010-11 HIGHLANDERS VOLLEYBALL

## JANUARY

<b>Fri. 7</b>	<b>IPFW</b>
<b>Sat. 8</b>	<b>IPFW</b>
<b>Thur. 13</b>	at Washington Adventist
<b>Fri. 14</b>	at George Mason
<b>Fri. 21</b>	at Rutgers-Newark
<b>Sun. 23</b>	at Saint Francis (PA)
<b>Thur. 27</b>	<b>KEAN</b>
<b>Fri. 28</b>	<b>HUNTER</b>

## FEBRUARY

<b>Fri. 4</b>	at Juniata *
<b>Tues. 8</b>	<b>KEAN</b>
<b>Wed. 16</b>	<b>NYU *</b>
<b>Fri. 18</b>	<b>LEES-MCRAE</b>
<b>Thur. 24</b>	at Springfield
<b>Sat. 26</b>	<b>GRAND CANYON (Alumni Day)</b>

## MARCH

<b>Tues. 1</b>	at Sacred Heart *
<b>Fri. 4</b>	at Lees-McRae
<b>Sat. 5</b>	at Pfeiffer
<b>Wed. 9</b>	at Kean
<b>Sat. 12</b>	<b>SAINT FRANCIS (PA)</b>
<b>Fri. 18</b>	at Lewis
<b>Sat. 19</b>	at Loyola-Chicago
<b>Tues. 22</b>	at Stevens
<b>Sun. 27</b>	<b>WASHINGTON ADVENTIST</b>
<b>Wed. 30</b>	at NYU *

## APRIL

<b>Sat. 2</b>	<b>JUNIATA *</b>
<b>Tues. 5</b>	<b>SACRED HEART *</b>
<b>Sat. 9</b>	<b>HARVARD *</b>
<b>Fri. 15</b>	<b>RUTGERS-NEWARK</b>
<b>Sat. 16</b>	at Harvard *

Home games in CAPS at the Estelle and Zoom Fleisher Athletic Center

\*Indicates Eastern Intercollegiate Volleyball Association match