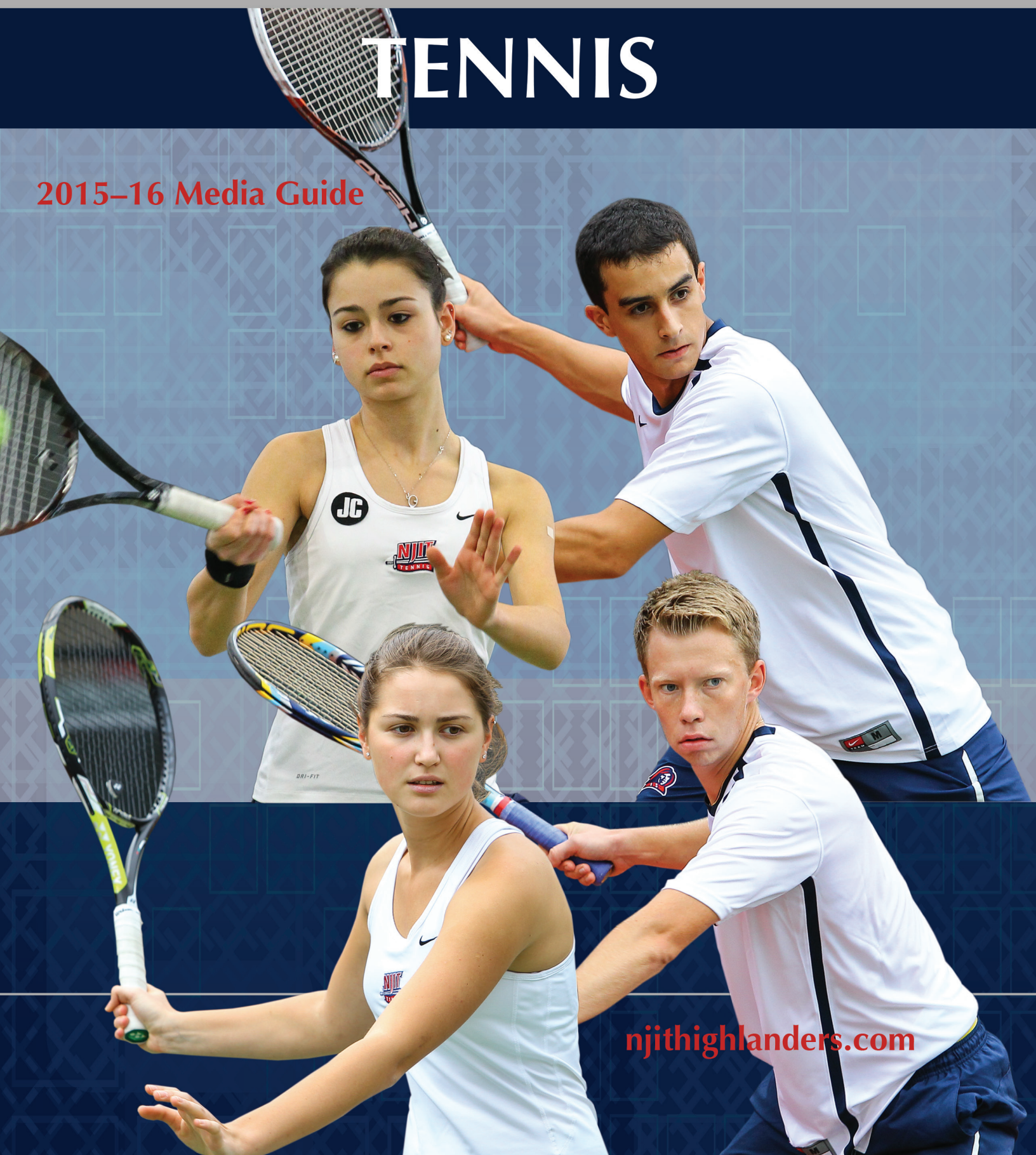




NEW JERSEY INSTITUTE OF TECHNOLOGY

TENNIS

2015–16 Media Guide



njithighlanders.com



TENNIS

TENNIS

Director of Tennis/Women's Head Coach

(alma mater, year):

Ira Miller (Clark University)

Phone/Email: 973-596-8297/imiller@njit.edu

Record at NJIT: 10-9 (M)/3-17 (W) (1)

Assistant Coach: Jacob Meyer

Graduate Assistant Coach:

Livia Gherman (UAlbany '11)

First Year Men's Program: 1934

2014-15 Men's Record: 10-9

First Year Women's Program: 1983

2014-15 Women's Record: 3-17

QUICK FACTS

Location: University Heights, Newark, NJ

Founded: 1881

Enrollment: 10,646 (total); 7,550 (undergraduate)

NJIT website: www.njit.edu

Nickname/Colors: Highlanders/

Red and White (Blue accent)

Home Arena: The Naimoli Family Athletic and Recreational Facility

Affiliations: NCAA Division 1

Conference: Atlantic Sun Conference

University President: Dr. Joel Bloom, EdD

Director of Athletics: Lenny Kaplan

Athletic Department Phone: 973-596-3636

WHY HIGHLANDERS?

The home of NJIT, University Heights, was formerly known as the Newark Highlands and NJIT's mailing address used to be High Street, until the thoroughfare was renamed in memory of Dr. Martin Luther King, Jr.

In 2006-07, NJIT athletics, in keeping with its move to NCAA Division I, unveiled a new graphic identity, which included a new Highlanders logo. Developed by CN Foundry for NJIT, the logo depicts the traditional Highlander, whose ferocity and bravery against all odds are the stuff of legend.

MEDIA RELATIONS

NJIT Athletics website:

www.njithighlanders.com

Facebook, Twitter, Instagram & YouTube:

@NJITHighlanders

Assistant AD for Sports Information:

Tim Camp, 973-596-8461/

timothy.camp@njit.edu

Assistant SID: Stephanie Pillari, 973-596-

8324/pillari@njit.edu

Assistant SID: Courtney Caden, 973-596-

8485/ caden@njit.edu

MEDIA INFORMATION

This guide is designed to assist in coverage of NJIT men's and women's tennis. For home matches, the NJIT sports information office will provide an official box score following each game. Coach Ira Miller and requested players will be available for interviews on the court following a 10-minute cooling off period. Radio broadcast requests should be made at least 10 business days prior to the contest. Requests for coach and player interviews on nongame days should be made through the NJIT sports information office (973-596-8461).

CREDITS

The 2015-16 NJIT Tennis Media Guide is a production of the NJIT Sports Information Office in cooperation with the Office of Strategic Communications. Written and edited by Tim Camp and Stephanie Pillari. Cover and interior design by Karyn Olsen. NJIT photographs and information courtesy of Office of Strategic Communications. All interior team and action photography by Larry Levanti. Red Bull Arena photo (p. 25) courtesy of Getty Images/RBNY.

TABLE OF CONTENTS

About NJIT	2-7
University Administration	8-11
Athletics Senior Staff	11
Sports Medicine	12-14
Strength & Conditioning	15-16
Academic Enrichment	16-17
Athletic Administration & Coaching Staff ..	18
NJIT in Division I	19-21
Athletics Facilities	22-25
Atlantic Sun Conference	26-27
Rosters	28
Head Coach Ira Miller	29-30
Assistant Coaches	31
2014-15 Men's Statistics and Results. .	32-33
2014-15 Women's Statistics & Results .	34-35
Men's Year-by-Year	36-41
Men's All-Time Roster	42
Women's All-Time Roster	43
Women's Year-by-Year	44-46
Hall of Fame	47
Directions to NJIT	48
Team Photos	49

NJIT is New Jersey's Science & Technology University. With roots going back to 1881, when it was founded as Newark Technical School, New Jersey Institute of Technology observed its 125th anniversary in 2006.

Located in University Heights, Newark, NJ, home to more than 30,000 college students, NJIT's campus is just 10 miles from New York City.

Playing a critical role in shaping New Jersey's future, NJIT, as a major public technological university, is an important pipeline for the flow of technology into society. The university's educational programs prepare students to be leaders in the technology-dependent economy of the 21st century. University researchers seek new knowledge to improve processes and products for industry. Through public and private partnerships and economic development efforts, the university helps to grow new business ventures that fuel the economy.

In recent years, NJIT has put tens of millions of dollars toward new and improved buildings and facilities on the 48-acre campus, including biomedical engineering labs and a campus center.



INSTRUCTIONAL PROGRAMS

NJIT offers an ever-expanding array of educational programs, with many new programs added in the last five years and more to come. In 2014 NJIT lists 125 undergraduate and graduate degree programs through six schools:

- Newark College of Engineering
- College of Architecture and Design
- College of Science and Liberal Arts
- School of Management
- Albert Dorman Honors College
- College of Computing Sciences



NJIT has 277 tenured or tenure track faculty; 99 percent of whom hold doctoral degrees or the highest degree attainable in their field. The student-faculty ratio is 16:1, with over 7,000 undergraduate students and nearly 3,000 graduate students. Our students hail from 33 states and more than 100 countries to rank eighth in the nation for diversity.

Albert Dorman Honors College enrolls more than 500 students who take advantage of honors courses, research opportunities, advising and mentoring. Honors College students have SAT scores ranking in the top 10 percent nationally.

With nearly 50,000 alumni, NJIT is an acclaimed institution.

- BuzzFeed.com ranked NJIT as the #1 higher education value nationally when considering annual tuition cost and average starting salary of graduates.
- Top one percent for return on investment and eighth in alumni earning potential among public universities nationwide – PayScale.com
- Top 10 percent nationally for return on investment and one of four best buys in New Jersey higher education –Bloomberg Businessweek
- Third in nation among America's Most Underrated Colleges – BusinessInsider.com
- Top National University – U.S. News and World Report
- 149th among national universities overall for its range of undergraduate majors and master's and doctoral degree programs and commitment to groundbreaking research - U.S. News and World Report
- An "America's Top College" – Forbes.com
- A Princeton Review Best College
- Top 200 American research universities –The Center for Measuring University Performance at Arizona State
- Top 50 among colleges without a medical school for research expenditures and top 10 among universities whose main research is in engineering – National Science Foundation
- Top 10 among technological universities in faculty scholarly productivity – Academic Analytics
- Top 100 producers of minority degrees, including fifth in the nation for bachelor's degrees in engineering technologies to all minority students – Diverse: Issues in Higher Education

RESEARCH

NJIT's research expenditures totaled more than \$110 million in FY2014 and faculty members welcome student collaboration on research projects.

As of September 1, 2014, NJIT had 185 issued U.S. Patents and 133 pending U.S. patent applications.

ECONOMIC DEVELOPMENT

NJIT is committed to economic development for Newark and the region. The university operates several outreach centers that provide direct technical assistance to the state's businesses with the goal of helping small and medium-sized companies. NJIT is also the home of New Jersey's oldest and largest incubator facility, and was one of the first institutions in the nation to adopt economic development as a fourth mission element, together with instruction, research and community service.

The Enterprise Development Center (EDC) at NJIT is New Jersey's largest high technology and life science business incubator, and one of the largest in the nation. EDC resident companies have attracted more than \$80 million in third-party funding since entering the incubator, and generated revenues of \$50 million last year. The approximately 90 member companies employ roughly 500 people.

THE CAREER EDGE

- NJIT was named in the top 1 percent for return on investment and 8th in alumni earning potential among public universities nationwide by *Payscale.com*.
- Students get a head start on their careers through cooperative education, salaried internships that relate specifically to their field of study.
- The 10 fastest-growing occupations for college graduates include NJIT's newest program areas—physician assistant and physical therapy—as well as computer-related occupations.
- Among the CEOs of the S&P 500 companies, engineering is the single most common undergraduate degree (22 percent of the group). More than half of the CEOs have undergraduate degrees in engineering, business management, science, math, or computing.

THE GLOBAL EDGE

The diversity in NJIT's student body and faculty prepares graduates to understand and succeed in the global marketplace.

THE TECHNOLOGY EDGE

NJIT has been designated one of the nation's most technologically sophisticated universities by *Forbes.com* and a *Princeton Review* survey and the university has received major funding from the National Science Foundation and the National Security Agency in recent years.

THE ACADEMIC EDGE

- NJIT named a Most Wired College by *Princeton Review*.
- NJIT was the first recipient of the Excellence in Technology Education Award presented by New Jersey Technology Council (NJTC), which annually recognizes outstanding technology companies and individuals who contribute to “growth, achievement, and excellence in diverse technology sectors of New Jersey.”
- *Forbes.com* and a *Princeton Review* survey designated NJIT as one of the nation’s most technologically sophisticated universities based on factors such as the ratio of computers to students, campus-wide and wireless networks, and technology-enhanced learning.
- NJIT has received major National Science Foundation (NSF) funding to define the next generation of computing applications. Most notable is the creation of *SmartCampus*, a wireless peer-to-peer, location-aware community system that immerses students in a world of wearable computers.
- NJIT has been designated a Center of Academic Excellence in Information Assurance (Homeland Security) Education by the **National Security Agency**.
- NJIT partners with Iowa State University in the Center for Information Protection (Homeland Security), an NSF-supported cooperative research center in information assurance.





THE REGIONAL EDGE

New Jersey, with America's highest concentration of pharmaceutical, hi-tech, biotech, and medical device companies is the place to study technology. It has the nation's highest per capita number of engineers and scientists as residents, while also leading in per capita rate of patents issued. Further, the Newark-New York region is a living laboratory for architecture and building sciences, environmental engineering and transportation. .

THE RESEARCH EDGE

NJIT has been designated by the State of New Jersey as the Homeland Security Technology Systems Center and NJIT operates the world-renowned Big Bear Solar Observatory.

A HISTORY OF NJIT

From the Industrial Revolution to the Information Age, New Jersey Institute of Technology has a rich history with its beginnings developing from the industrial age.

In 1881, an act of the New Jersey State Legislature, recognizing an urgent need, sought a home for what would be the state's technical school. The efforts of Newark's public and private sectors resulted with the opening of Newark Technical School, addressing the state's need.

Over time, the university expanded its curriculum and mission. In 1919, the university established baccalaureate programs in three engineering fields. By the middle of the 20th century, Newark Technical School was transformed into the robust Newark College of Engineering.

The post-war period was one of enormous activity with regular expansion of the campus, as well as the introduction of doctoral level programs. In 1975, with the addition of the New Jersey School of Architecture, the institution had evolved into a technological university, emphasizing a broad range of degrees and dedication to significant research and public service. Newark College of Engineering, stronger than ever, remained intact, but a new university name -- New Jersey Institute of Technology -- reflected the institution's expanded mission.

A broadened mission called for the creation of a residential campus and the opening of NJIT's first dormitory in 1980 began a period of steady growth that continues. Two new schools were established during the 1980s--the College of Science and Liberal Arts (1982) and the School of Industrial Management (1988). The Albert Dorman Honors College was established in 1994, and the College of Computing Sciences, was created in 2001. Beginning in 2009 the College of Architecture and Design was created to house the New Jersey School of Architecture and the new school of Art and Design.





DR. JOEL BLOOM

President, New Jersey Institute of Technology

Appointed President of New Jersey Institute of Technology on January 12, 2012 by unanimous vote of NJIT's Board of Trustees, Joel S. Bloom started his career in industry working as an economist.

He subsequently became an educator and administrator for the New York City public schools. Prior to coming to New Jersey, he worked as a research director and instructor at Teachers College, Columbia University.

In New Jersey, he managed state and federally-funded curriculum development and training centers for the state. From 1983 through 1990, Dr. Bloom served as assistant commissioner in the NJ Department of Education for the Division of General Academic Education. He was responsible for managing many of the education department's initiatives including competency testing, curriculum content standards, pre-school

programs, establishment of 17 model effective schools, over 300 grants and contracts, and a \$24 million budget.

Immediately prior to his appointment as President, he served as Interim President from September 2011 until January 2012. Prior to that, he was NJIT's Vice President for Academic and Student Services, as well as founding dean of the Albert Dorman Honors College.

Indeed, since joining NJIT in July 1990, Dr. Bloom has served the university in many capacities.

Promoted in 1996 to Vice President for Academic and Student Services, he was responsible for nine divisions of the university, including pre-college programs, enrollment management, continuing professional education, career development services, dean of student services, freshman studies, educational opportunity programs, library services, physical education and athletics.

Dr. Bloom was appointed as the first dean of the Albert Dorman Honors College in 1998, in addition to his vice president responsibilities. The Honors College enrolls over 650 students who come from 15 states

and several foreign countries. The average SAT score is over 1340 and the majority of the incoming freshman class members graduated in the top 15 percent of their high school class. More than 50 percent of the Honors College students maintain a grade-point average higher than 3.5.

Dr. Bloom is chair of the Science Park Board, treasurer of the NJ President's Council, and treasurer of the NJEDGE.Net Board. In addition, he serves as a member of the following boards: the Board for Communities and Schools, Newark Alliance, Philadelphia Alliance for Minority Participation, La Casa de Don Pedro, and the Association of Public and Land-grant Universities Presidents Council. Dr. Bloom has been the recipient of national and state education awards, as well as federal, foundation and corporate grant awards. He has published journal articles and presented papers on school improvement, curriculum development, college transition and student assessment.

Dr. Bloom holds a master's degree and a doctorate from Teachers College, Columbia University. He also earned master's and bachelor's degrees from Hunter College of the City University, New York City.



CHARLES J. FEY

Vice President for Academic and Student Services

oversees numerous offices and departments at NJIT, including including Intercollegiate Athletics, Recreation and Intramurals, Physical Education.

Fey actively participates in student affairs business on a national level and holds or has held board positions in ACPA, NASPA, and APLU. He was the founding president of the Massachusetts College Personnel Association and was president of the Texas Association of College and University Personnel Association. Fey has received numerous awards including the Esther Lloyd Jones Professional Service Award from ACPA; is a Diamond Honoree of ACPA's Foundation; twice received the Outstanding Service award from the Commission on Administrative Leadership of ACPA; and an exemplary service award from MCPA.

Fey earned his bachelor's degree in liberal arts and his masters of education degree in counselor education, college student personnel services, both from The Pennsylvania State University. He holds a doctorate in higher education administration from Texas A&M University.

Prior to NJIT, he was the Vice President for Student Affairs at The University of Akron; was Vice President for Student Affairs at University of Maryland, Baltimore County (UMBC); Dean of Students at the University of Texas at El Paso; served as Vice President and Dean of Student Life at Our Lady of the Lake University in San Antonio; Dean of Students at St. Mary's University, also in San Antonio; Associate Dean of Student Affairs at Keene (NH) State College; Director of Housing/Resident Life at Catholic University of America; and in numerous student affairs and other administrative posts at Newbury Junior College in Boston.

Married to Melba Ann Fey since 1985, Charlie and Melba have two daughters, Kelly Prestel, living in Boston, and Chelsea Fey, living in Arlington, VA and two sons, Lloyd Lopez and Matt Lopez, who live in San Antonio.

Dr. Fey joined NJIT in September 2012 with 39 years of leadership experience in student services as Vice President of Academic Support and Student Affairs.

At NJIT, he continues his commitment to creating a campus climate that promotes student achievement and student success. His personal philosophy of student engagement extends to the development of innovative programs that inspire challenging and engaging student experiences and encourage each student to reach for his/her dream and work until it is achieved.

Dr. Fey's strong record of accomplishments demonstrates his deep understanding of emerging issues and trends that affect metropolitan campuses and the students who attend them. In addition to his direct involvement with students, Fey



LENNY KAPLAN

Assistant Vice President/Director of Athletics

Since taking over as head of New Jersey Institute of Technology's division of physical education and athletics in August 2000, Lenny Kaplan has been instrumental in guiding the program's growth, first at the NCAA Division II level and, since late 2002, the successful reclassification to NCAA Division I.

The 2014-15 academic year saw momentous accomplishments and change for Highlander athletics.

In competition, two NJIT teams, men's soccer and men's basketball, scored victories over nationally-ranked opponents. Men's soccer defeated #22 Navy in late September 2014 and men's basketball became a national story when it upset #17/#16 Michigan in Ann Arbor on December 6. Later, the men's basketball team won its first three games in the national CollegeInsider.com postseason tournament, advancing to the semifinals.

Off the court, NJIT announced plans to build a new Wellness and Events Center, a \$100 million on-campus facility with an opening targeted for 2017. And finally, the Highlanders, who had been the only Division I

Independent in the nation, accepted an opportunity to become the eighth full member of the multisport Atlantic Sun Conference, effective July 1, 2015.

Along the way, Kaplan was promoted in 2014-15 to his new title of Assistant Vice President/Director of Athletics.

He has been a member of the Division I-AAA Athletics Directors Association (DI-AAA ADA) Executive Committee since 2012-13. The Division I-AAA Athletics Directors Association's mission is to enhance initiatives common to its Division I-AAA membership (the Division I institutions that do not sponsor football).

In September 2015, Lenny Kaplan was lauded at the annual Eastern College Athletic Conference (ECAC) Honors Luncheon. In a program that recognized student-athletes, administrators, institutions and officials, he was one of two named Division I Male Administrator of the Year.

Going back more than a decade to his arrival at NJIT, Kaplan helped stabilize and expand a program that was entering its fourth year in Division II. In late 2002, after discussions with then-university President Dr. Robert A. Altenkirch and Vice President (now President) Dr. Joel Bloom, Kaplan took on the task of steering NJIT's programs into Division I, an arduous process that reached fruition with the NCAA's granting active Division I status, with full championship eligibility effective September 1, 2009.

Throughout Kaplan's tenure, NJIT has enhanced the athletics program, particularly in areas that benefit the

student-athletes directly. A hallmark in achieving that aim was the Highlanders Athletics Campaign, which announced in the summer of 2009 that it had raised \$5.4 million, exceeding its original goal. In the \$5 million goal, \$3 million was for facilities, \$1.5 million for athletic scholarships, and \$500,000 for program support.

The sports offerings have expanded to the current 19 varsity programs. And since 2004, NJIT has renovated its two main on-campus venues—Lubetkin Field at Mal Simon Stadium at Lubetkin Field and the Estelle and Zoom Fleisher Athletic Center. Further, the Naimoli Family Recreation Center, a 25,600-square foot facility opened early in 2011 enhanced the recreational and intercollegiate opportunities on campus. The Naimoli Center is the home of both NJIT tennis teams.

The school also signed a 10-year partnership to play all home baseball in the professional Bears and Eagles Riverfront Stadium and later agreed to host select basketball home games in the Prudential Center, downtown Newark home of the NHL's New Jersey Devils. The NJIT club hockey team also plays all of its home contests in the AmeriHealth Pavilion, part of the Prudential Center that serves as the Devils practice rink.

Under Kaplan's leadership, many teams achieved regional and national Division II ranking. Success for several women's teams was unprecedented, with basketball, tennis and soccer all reaching postseason play for the first time in their existence under his administration.

Additionally, men's volleyball captured a divisional championship in the Eastern Intercollegiate Volleyball Association and the next year reached the EIVA playoff semifinals hosted by eventual 2008 national champion Penn State.

In 2009-10, NJIT's first year as a full active member of Division I, the women's volleyball team and senior Sabrina Baby became the school's first Division I national statistical champions, as team and individual leaders, respectively, digs per set. Baby was honored as the school's first CoSIDA Academic All-America in the Division I era, earning third-team national honors.

Christian Baumbach made history in 2009 as NJIT's first individual DI conference champion, when he won the Great West Conference men's cross country race. He also won the prestigious IC4A University Division race in the 101st annual running of that contest.

In 2010-11, the Highlanders earned their first-ever Division I conference team championship when women's tennis captured the Great West title, a feat they repeated the following year. In 2012-13, both basketball teams won Great West Conference crowns. Individually, men's basketball players Isaiah Wilkerson (2011-12), Chris Flores (2012-13), and Damon Lynn (2014-15) have all been Associated Press All-America honorable mention recipients,

Marko Drljic became the first NJIT men's soccer player to be selected to the All-Region season honors from the NSCAA at

the highest level, earning the honor in both 2013 and 2014. Cristian Marcel won similar honors in 2014. The duo were Sun Belt Conference Offensive Player of the Year (Marcel) and Defensive Player of Year (Drljic) in 2014, as well.

Men's tennis player Markus Schultz has achieved regional ranking in both 2013-14 and 2014-15.

John Porteous became the first NJIT track and field athlete to qualify to the 2014 NCAA Track and Field Regional, earning a spot in the men's 400-meter hurdles.

Julia Garcia, a freshman, was second in the epee at the 2015 NCAA Championships, becoming the school's first women's fencing All-America.

NJIT's growing success in Division I competition has been gone along with a continued commitment to excellence in the university's rigorous academic environment. The combined grade point average of Highlander student-athletes has been above 3.0 for 12 straight semesters through Spring 2015.

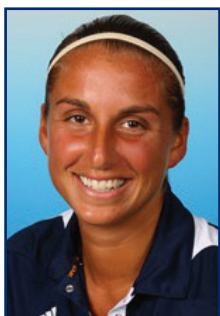
Before coming to NJIT, Lenny Kaplan served 11 years at Manhattan College, where he began as Manhattan's director of operations and was assistant athletics director from 1991-2000.

Kaplan, a 1988 graduate of St. John's University with a degree in athletics administration, resides in Merrick, NY, with his wife, Nancy. They are the parents of two sons, Michael, a student at Lafayette College, and Joshua, who is in high school.

Athletics Senior Staff



Andrew Schwartz
Senior Associate Athletic Director
(973) 642-7224 aschwartz@njit.edu



Stephanie Pillari
Acting Senior Women's Administrator/
Assistant Sports Information Director
973-596-8324 pillari@njit.edu



Tim Camp
Asst. Director of Athletics/
Sports Information
(973) 596-8461 timothy.camp@njit.edu



Jayson Smikle
Assistant Athletic Director
for Compliance
(973) 596-5278 jsmikle@njit.edu



Tim Paul
Assistant Director of
Development for Athletics
(973) 596-8489 tpaul@njit.edu

SPORTS MEDICINE

NJIT sports medicine is moving forward with the growth of the Highlanders program. Head trainer Matt Koscs, MS/ATC, oversees the program, ably assisted by assistant trainers Paul Grayner, MEd/ATC; Melissa Maskery, MS, ATC; Brittany Vondran, MS/ATC; and, Kyle Tuohy, BS/ATC.



Matt Koscs, ATC, Head Athletic Trainer

Matt Koscs, who earned both his bachelor's and master's degrees from University of Delaware, has

served NJIT as head trainer since July 2009, a year after he joined the staff as an assistant trainer.

As an undergraduate at Delaware, he was recipient of the Paris Delligatti Memorial Award for Excellence in Athletic Training. He

earned his MS in Exercise Science from Delaware in 2008.

Prior to his arrival at NJIT, Matt served three years as the head athletic trainer at Hodgson Vocational Technical High School in Newark, DE, from 2005 to 2008.

In addition to his work at the high school level, he was head athletic trainer for the Delaware Dynasty semi-pro soccer team in Wilmington, as well as with the Kirkwood Soccer Club in New Castle in 2005 and 2006.

He was employed from 2005 to 2008 at Christiana Care Physical Therapy Plus, in Newark, DE, where he was an athletic trainer and was the Director of Athletic Training Services in a clinical setting.

He is a NATABOC certified athletic trainer, as well as holding additional certifications as a professional rescuer and in first aid.

He resides in Metuchen, NJ with his wife Kristin and daughters Eloise, Claire and Madeleine.



Paul Grayner, ATC, Assistant Athletic Trainer

Paul Grayner, who joined the NJIT staff as an assistant athletic trainer late in the 2008 calendar year, has a diverse

background in athletic training, having served at the college and professional levels, as well as in a fitness center setting.

A graduate of Saint Leo College in Florida and holder of a master's

degree from American University in Washington, DC, Grayner has served as both a head and assistant trainer in the past.

From the mid-1970s to the mid-1980s, he was a trainer in the minor league systems of the New York Yankees and New York Mets from 1977 to 1985 and in 1984 he was assistant trainer with the Mets. He later worked with the Long Island Knights professional basketball team.

At the collegiate level, he was head trainer at Division I Fairleigh Dickinson University in Teaneck, NJ from 1989 to 1998 and he earlier worked as an assistant trainer at Hofstra (1982-85) and Adelphi (1985) on Long Island before joining FDU as an assistant (1986-89).

In addition to his work in athletic training, Grayner is a financial services representative and a life insurance sales representative.

He resides in Dumont, NJ.



Melissa Mackey, ATC, Assistant Athletic Trainer

Melissa Mackey, who joined the NJIT staff as an assistant athletic trainer in the summer of 2013, earned her bachelor's

degree, majoring in athletic training and minoring in strength and conditioning, from the University of Delaware in 2011.

She earned her master's in athletic training at Temple University in May 2013.

As a graduate assistant, she worked in Philadelphia with several Division I teams at Drexel University and as an undergraduate, on the medical staff for Delaware's 2010 Division I Football Championship Series (formerly known as Division I-AA) national runner-up.

She has worked as a trainer at numerous summer camps and before coming to NJIT, she earned the 2013 Merit Award for Research in the College of Health Sciences & Social Work and was the recipient of Drexel University Dragon Award for Leadership.

She is married to Mark Mackey.



Kyle Tuohy, ATC, Assistant Athletic Trainer

Kyle Tuohy, a 2014 summa cum laude graduate of East Stroudsburg (PA) University, joined the NJIT

athletic training staff in September 2014.

Tuohy, who will attend graduate school while working at NJIT, won

multiple awards from his alma mater, including the David Caryl Athletic Training Outstanding Student Award in May 2014.

He had varied clinical internship experience starting in the Fall Semester 2012 and continuing through his senior year.

His internships included stints with the East Stroudsburg women's basketball team; Parkland High School and Pen Argyl High School,

both in Pennsylvania; the Tennessee Smokies professional baseball team, Class AA minor league affiliate of the Chicago Cubs; and Lafayette College in Easton, PA, where he worked closely with the Leopards football team in season and also worked with athletes from all in-season sports in the Fall Semester.

He holds several profession-related certifications, including from the National Athletic Trainers Association.



Lauren Kravitz, ATC, Assistant Athletic Trainer

Lauren Kravitz, who joined the NJIT staff as an assistant athletic trainer in the fall of 2015, earned her bachelor's degree,

majoring in athletic training from William Paterson University in 2013.

She is pursuing her master's in exercise science with a concentration in exercise physiology at Kean University with an

anticipated graduation in December 2015.

As a graduate assistant at Kean University, she was the primary contact for NCAA Division III men's and women's basketball, field hockey and men's and women's lacrosse.

Prior to graduation at William Paterson, she worked as an athletic training student, providing treatment for NCAA Division III football, softball, men's basketball and men's and women's soccer.

She has worked as an Occupational Therapist Aide at Optimum Orthopedics in Montclair, NJ, as well as an Aide at Push to Walk, a non-profit organization in Riverdale, NJ, that provides individualized workouts and resources to people with spinal cord injuries and other neurological conditions.

Her volunteer experience includes: National Special Olympics, Special Olympics of New Jersey Summer Games and Special Olympics of New Jersey Fall Games.

Administration



Louis Rizio, MD, Team Physician

Dr. Rizio is a board certified orthopedic surgeon and is fellowship trained in the field of sports medicine. He is a graduate of Rutgers and after earning his medical degree from the UMDNJ/New Jersey Medical School (recently reorganized and renamed Rutgers Biomedical and

Health Sciences), Dr. Rizio completed his orthopaedic residency at Tufts University in Boston.

He then completed a sports medicine fellowship at the University of Miami. During his fellowship, he was assistant team physician of the Miami Dolphins, University of Miami Hurricanes, and the Florida Marlins.

Dr. Rizio, who specializes in sports-related injuries, practices at the Sports Medicine and Orthopaedic

Center in Livingston, NJ. Prior to starting his own practice, Dr Rizio was the Chief of Sports Medicine at the NJ Medical School from 2000-2005. He currently is a professional, college, and high school team physician.

In 2013, Dr. Rizio was honored by the magazine New Jersey Monthly on its "Jersey Choice Top Doctors" list.

STRENGTH AND CONDITIONING

There are many ways to make a team better and a vital path to improvement comes with the mantra "bigger, stronger, faster".

It's how teams get better from within by maximizing individual and team performance in competition. The Strength and Conditioning staff also works closely with the Athletic Training Staff in the areas of injury prevention and rehabilitation.

In the summer and fall of 2014, NJIT's Strength and Conditioning took new direction with the appointment of Bobby Fisk as Head Strength and Conditioning Coach and Drew Culp as Fisk's Assistant Coach.



Bobby Fisk, Head Strength & Conditioning Coach

Bobby Fisk, who was a basketball player in his own college days and coached the sport after college, comes to NJIT from Xavier University in Cincinnati, where he was assistant coach of strength and conditioning for the entire Musketeers' program, which

competes in the Big East Conference.

Fisk, a native of Schenectady, NY, spent over two years at Hobart and William Smith Colleges in Geneva, NY, where, as head strength and conditioning coach, he worked with successful teams, including women's soccer (William Smith College), which won the 2013 NCAA Division III National Championship; football (Hobart), which advanced to the 2012 Division III national quarterfinals and the regional finals in 2011 and

2013; and basketball, where Hobart reached the second round of the 2012 NCAA Tournament.

Moving to the Division I level with Xavier in 2013-14, Fisk worked with all 16 of the school's teams, with a primary assignment to women's basketball, men's and women's soccer, baseball, and men's and women's tennis.

He is a graduate of the State University of New York College at

Oneonta (BS, Business Economics, 2008), Averett University of Danville, VA (MBA, 2010), and California University of Pennsylvania (MS in Exercise Science, Performance Enhancement & Injury Prevention, 2013).

As a student-athlete, Fisk was a men's basketball player at NCAA Division I UMBC in Baltimore for three years before transferring to Oneonta, where he was on the team for two years, serving as captain as a senior and earning All-State

University of New York Athletic Conference honorable mention.

As a senior for Oneonta's Red Dragons, he finished 16th in the nation in Division III in 3-point shooting percentage (.441) and 22nd in 3-pointers made per game (3.2) as a senior at Oneonta.

After graduation from Oneonta, he entered coaching while pursuing his master's degree at Averett, serving that program as assistant men's basketball coach (two years) and head strength and conditioning

coach (one year).

Having received his master's degree from Averett in December 2010, he returned home to the Schenectady area and worked April 2011 to July 2011 as assistant strength and conditioning coach at nearby Siena College and with the minor professional basketball Albany Legends (head strength and conditioning coach).

Fisk holds multiple certifications and professional memberships.



Drew Culp, Assistant Strength & Conditioning

NJIT's head strength and conditioning coach Bobby Fisk named Drew Culp to be his assistant coach in

nearby Seton Hall prior to accepting his position with NJIT.

At Seton Hall, Culp worked with the school's Big East Conference men's and women's basketball teams, as well as with the men's soccer team.

Between college and coming to New Jersey, Culp worked at Velocity Sports Performance in Irvine, CA. He was a Sports Performance Coach and Assistant Sports Performance Director. Specifically, he was the Head Strength and Conditioning Coach for the El Toro High School football team and also assisted in

training National Football League combine athletes. He also offered private training to athletes in a range of sports and age levels.

Drew Culp was a graduate assistant strength and conditioning coach at Penn State, working with the Nittany Lions football team for over a year through preseason 2012 and working with 11 Olympic Sports teams in his final semester.

He holds multiple certifications, including both strength and conditioning and first aid and CPR.

September 2014.

Culp, who earned his bachelor's degree from Penn State University in 2010 and his master's degree from Penn State in 2012, most recently served as a volunteer assistant strength and conditioning coach at



ACADEMIC ENRICHMENT

Sandra Taylor, Director of The Learning Center

Sandra Taylor was appointed as Director of The Learning Center in late September

2014 after serving as Interim Director for the previous 16 months.

She joined NJIT in January 2010 as Academic Advisor for Student-Athletes working in NJIT's Center for Academic and Personal Enrichment (CAPE), which has since been renamed as The Learning Center.

She mentored student-athletes in the areas of academic support, personal development, leadership, and community service. She was instrumental in bringing the Chi Alpha Sigma Honor Society for student-athletes to campus and has been individually certified from the N4A (National Association of Academic Advisors for Athletics) as an academic advisor for student-athletes.

In May 2013, she was elevated to Interim Director of CAPE and presided over its transition to the Learning Center in August of 2014. The Learning Center provides academic support to all students, mentoring and workshops, tutoring in areas outside of math and writing,

and testing accommodations for students with disabilities. She has served on NJIT's Strategic Planning, Academic Advising, Retention and Persistence, Customer Service, Student Satisfaction, and Athletic Oversight Committees.

Prior to joining NJIT, Taylor spent 17 years as a key member of the Manhattan College Department of Athletics. She earned both her bachelor's degree in secondary education and her master's degree in special education from Manhattan College and is working on her doctorate in educational leadership at St. Mary's University in Winona, MN.

Working in the athletics department at Manhattan, a founding member of the Metro Atlantic Athletic Conference, Taylor was Associate Director of Athletics and Senior Woman Administrator, having filled those posts from 1996 until joining NJIT in 2010,

For much of her time on the Manhattan staff (1995 to 2003), she was Chief Athletic Department Compliance Officer, with responsibility for Manhattan's adherence to NCAA Division I, MAAC and college regulations. She began her service at Manhattan as

Athletic Department Ticket Manager, serving in that capacity from 1993 to 2003.

In her time at Manhattan, she served on numerous NCAA, conference and internal college committees, including service on the NCAA Division I Management Council from 2004 to 2007 and as chair of the NCAA Women's Lacrosse Committee from 2002 to 2006.

At the conference level, she chaired the MAAC Women's Basketball Committee from 1997 to 2009 and also served on four other sport committees, as well as on the MAAC Committee on Athletic Administration, with service as vice-chair in 2008-09.

Internally at Manhattan, her assignments included service on the Middle States Review in 2000 and on the NCAA Certification Committee.

Sandra and her husband, Ken, who is Associate Athletics Director/Development and Marketing at Monmouth University after many years as Associate Commissioner at the MAAC, reside in Monroe Township, NJ, with their daughters, Katherine, who was born in May 2004, and Samantha, who was born in July 2009.



Mike Spisto, Eligibility Certification Officer/Academic Adviser for Athletics

Mike Spisto moved to administration as NJIT's Eligibility Certification Office/Academic

Adviser for Athletics in the Spring of 2013, working in the Center for Academic and Personal Enrichment (CAPE), now named The Learning Center.

For the previous five years, he was the top assistant coach on the men's basketball staff, working with head coach Jim Engles in an association that culminated with the Highlanders capturing the 2013 regular season championship of the Great West Conference.

In addition to 14 years college coaching—five at NJIT—he served as Director of Athletics at the State University of New York at Delhi in the

two years before he joined Engles' coaching staff with the Highlanders.

He had two stints as head coach at SUNY at Delhi sandwiched around three years as a Division I assistant with Rider and Albany (NY). He began his coaching career with two years an assistant at his alma mater, Division III SUNY Oneonta.

At Delhi, which is also an alma mater, he was head coach from 1999 to 2001, left to become a Division I assistant and then returned for another two-year stint as head coach from 2004 to 2006 before becoming AD at Delhi.

His head coaching record in four years at SUNY Delhi was 86-31 and both stints included championships and coaching awards. His first Division I coaching assignment came at Rider University in 2001-02, where he worked alongside Jim Engles as an assistant when Rider captured its first-ever Metro Atlantic

Athletic Conference regular season championship.

Heading to the University at Albany (NY), he helped recruit the team that would win back-to-back America East Conference championships.

Spisto's coaching career began at Oneonta State following his 1997 graduation. In addition to his bachelor's degree from Oneonta, he earned an associate's degree from SUNY Delhi, as well as an MSS from United States Sports Academy.

He played at both Delhi and Oneonta and was all-region twice at Delhi, where he is the career assists leader. At Oneonta he was captain as a senior after winning an ECAC title his junior year.

Mike and his wife, Katie-Lynn, reside in Staten Island, NY, with their young children: sons Michael (10) and Christopher (7), and daughter Alyssa (3).



Brittany Vorndran, Academic Advisor for Student-Athletes

Brittany Vorndran, who joined the NJIT staff as an assistant athletic trainer in the summer of 2012, earned

her bachelor's degree, majoring in athletic training, from Bridgewater (MA) State University in 2010 and was the school's 2008-09 Athletic Training Student of the Year.

She earned her master's in Kinesiology at James Madison University in Harrisonburg, VA, in May 2012.

At James Madison, she worked with the cross country, track and field, tennis and cheerleading teams.

A resident of Millville, NJ, she has worked as a substitute teacher for the Millville Board of Education.

Administration

SENIOR ADMINISTRATION

Lenny Kaplan	Assistant Vice President/Director of Athletics
Andrew Schwartz	Senior Associate Athletic Director
Stephanie Pillari	Acting Senior Woman Administrator
Jayson Smikle	Assistant Athletic Director for Compliance
Tim Camp	Asst. Athletic Director for Sports Information
Brian Callahan	Assistant Director of Physical Education
Michael Siegel, PhD	Faculty Athletic Representative
Kerry Feder	Administrative Assistant for the Director of Athletics

ACADEMIC SUPPORT

Sandra Taylor	Director of The Learning Center;
Mike Spisto	Eligibility Certification Officer/ Academic Advisor Athletics

ATHLETIC TRAINING

Matt Koscs	Head Athletic Trainer
Paul Grayner	Assistant Athletic Trainer
Melissa Mackey	Assistant Athletic Trainer
Kyle Tuohy	Assistant Athletic Trainer
Lauren Kravitz	Assistant Athletic Trainer
Dr. Louis Rizio	Team Physician

COMPLIANCE	
Jayson Smikle	Assistant Athletic Director for Compliance
Raquel Green	Compliance Coordinator

DEVELOPMENT

Tim Paul	Assistant Director of Development for Athletics
----------	---

FLEISHER ATHLETIC CENTER / WARREN STREET FITNESS CENTER

Casey MacDonald	Interim Operations Manager
Joe Vacca	Athletics Business Coordinator/ Ticket Manager
Jonathan Walker	Warren Street Fitness Center Front Desk

SPORTS INFORMATION

Tim Camp	Assistant Athletic Director for Sports Information
Stephanie Pillari	Assistant Sports Information Director
Courtney Caden	Assistant Sports Information Director

STRENGTH AND CONDITIONING

Bobby Fisk	Head Strength and Conditioning Coach
Drew Culp	Assistant Strength and Conditioning Coach

COACHING STAFF DIRECTORY

BASEBALL

Brian Guiliana	Head Coach
Robbie McClellan	Assistant Coach
Grant Neary	Assistant Coach
Craig Anderson	Volunteer Assistant Coach

MEN'S BASKETBALL

Jim Engles	Head Coach
Brian Kennedy	Assistant Coach
Jesse Agel	Assistant Coach
Kim Waiters	Assistant Coach
Andrew McGlynn	Director of Basketball Operations

WOMEN'S BASKETBALL

Steve Lanpher	Head Coach
DeAnn Kraft	Assistant Coach
La Kea Jones	Assistant Coach
Epiphany Smith	Assistant Coach

MEN'S & WOMEN'S CROSS COUNTRY

Al Alonso	Head Coach
John Crawford	Assistant Coach

MEN'S AND WOMEN'S FENCING

Yefim Litvan	Head Coach
Jason Henderson	Assistant Coach
Henry Kennard	Assistant Coach
Danielle Henderson	Assistant Coach

MEN'S LACROSSE

Travis Johnson	Head Coach
Brad Conlon	Assistant Coach
Fran Gormley	Assistant Coach
Brian Tironi	Volunteer Assistant Coach

MEN'S SOCCER

Didier Orellana	Head Coach
David Janezic	Assistant Coach
Augi Freitas	Assistant Coach
Anthony Tuesta	Volunteer Assistant

WOMEN'S SOCCER

Mandi Risden	Head Coach
Scott Waddell	Assistant Coach
Chris Duggan	Assistant Coach
Tim Verschuren	Volunteer Coach

MEN'S SWIMMING & DIVING

Michael Lawson	Head Coach
Mark Albright	Assistant Coach
Shawn Bryan	Assistant Coach
Anthony Cacula	Volunteer Diving Coach

MEN'S AND WOMEN'S TENNIS

Ira Miller	Head Coach
Jacob Myer	Assistant Coach
Livia Gherman	Assistant Coach

MEN'S AND WOMEN'S TRACK AND FIELD (INDOOR & OUTDOOR)

Al Alonso	Head Coach
John Crawford	Assistant Coach
James Luginsland	Assistant Coach (Throws)

MEN'S VOLLEYBALL

Danny Goncalves	Head Coach
Brennon Dyer	Assistant Coach

WOMEN'S VOLLEYBALL

Pete Volkert	Head Coach
Ariel Scott	Assistant Coach
Anthony Valbrun	Assistant Coach
Marc Solondz	Volunteer Coach

Beginning on September 1, 2009, the entire NJIT athletics program officially gained across-the-board active membership in NCAA Division I, completing a process that began officially in 2003.

NJIT, its teams and student-athletes enjoy the full benefits of Division I membership, including eligibility for Division I postseason championship competition and the inclusion of the Highlanders among the national Division I leaders in statistics maintained by the NCAA.



Alba Rosas Garcia

Within months of NJIT's active Division I membership, the school won its first national Division I statistical championships, as women's volleyball player Sabrina Baby led the nation in digs per set and her teammates captured the team crown for digs, as well.

The NCAA's decision to make NJIT a full member of Division I completed a specific timetable that required NJIT and its Department of Athletics

to meet a series of annual benchmarks before proceeding to the next step in the process.

NJIT, which competed in NCAA Division II beginning in 1997-98 and in NCAA Division III for more than two decades before that, made its first formal move toward Division I reclassification with men's soccer paving the way in 2003. That move grew out of November 2002 meetings among then-President

Robert A. Altenkirch, then Vice President Joel Bloom (who would later succeed Altenkirch as NJIT's President) and Director of Athletics Lenny Kaplan. From there came a proposal for Dr. Altenkirch to the Board of Trustees, which unanimously approved in February 2003 a plan to reclassify men's soccer to Division I. Little more than two years later, the NCAA approved NJIT's proposal to begin advancing its entire program to Division I.

Men's soccer achieved active Division I status in 2005 and NJIT women's soccer became postseason-eligible in 2007. The remaining programs also began reclassifying in 2005, with active status taking longer for an entire athletics program than under the single-sport- per-gender track used for the two soccer programs.

In 2005-06 the lion's share of the competition for all but the men's soccer program came at the Division II level. In 2006-07, 2007-08, and 2008-09, NJIT's teams competed at the Division I level and fully

complied with NCAA Division I rules, but were not eligible for championships at the top level.

Every facet of the program has been enhanced in the move to Division I with a special emphasis placed on student-athlete welfare. Facility upgrades have gone along with support staff expansion. NJIT has built a model NCAA Division I rules compliance regimen within its athletics program and across the entire university.

Further, the Board of Trustees embraced the transition to Division I as part of the University's strategic plan to enhance the quality of campus life for all students.



Richard Rangga

NJIT's teams compete throughout the United States, taking on opponents from schools that are instantly recognizable for their stature in academics and athletics.

NJIT student-athletes have faced opponents every Ivy League institution, as well as the Patriot League, including Army and Navy, Buckell, Lafayette, and Lehigh.

The Highlanders have also competed against teams from every Division I conference with teams either in the Northeast or Mid-Atlantic States, including the America East, American Athletic, Atlantic 10, Big East, Colonial Athletic Association, Metro Atlantic Athletic, Mid-Eastern Athletic, and Northeast.

The eighth New Jersey-based institution in Division I, NJIT has competed against all seven of its home state peers, including Rutgers and Seton Hall.

In addition, Highlander teams have taken on squads from power conferences such as the ACC, Big Ten, Big 12, and Pac-12.

NJIT joined its first Division I conference in 2009-10 when the Great West became an all-sports conference and women's tennis captured back-to-back league titles in 2011 and 2012. In 2012-13, the final year of the GWC, NJIT men's basketball was regular season champion and NJIT women's basketball was GWC Tournament champion.

Moving on from the Great West, NJIT women's tennis joined the America East Conference in 2013-14 and finished as conference runner-up in 2014, the Highlanders' first try at the AEC title. NJIT men's soccer began play as a member of the Sun Belt Conference in 2014. Also in 2013-14, NJIT

men's swimming became one of three new members in the Coastal Collegiate Swimming Association (CCSA).

In June 2015, NJIT and the Atlantic Sun Conference announced that the Highlanders would become the newest full member of the A-Sun. Founded in 1978 as the Trans America Athletic Conference, the

conference took on its present name following the 2001 season.

The Atlantic Sun Conference will be the home of 13 of NJIT's varsity teams in 2015-16, with men's soccer moving over from the Sun Belt in 2016-17, bringing the total of A-Sun teams from NJIT to 14.



Andres Alban

Athletics Facilities



The New Jersey Institute of Technology teams play home games and practice in a combination of facilities on campus and off.

The on-campus facilities include Lubetkin Field at Mal Simon Stadium for outdoor sports and the Estelle and Zoom Fleisher Athletic Center for indoor sports. In addition, NJIT in 2011 opened is the Naimoli Family Athletic and Recreational Facility, a multi-purpose indoor facility on the site of the former outdoor tennis courts.

Off-campus venues include Bears and Eagles Riverfront Stadium, a professional minor league stadium that is the home of NJIT baseball; the Prudential Center, home of the NHL Devils and NBA Nets, which has hosted selected NJIT basketball games; and, Branch Brook Park in Newark and Van Cortlandt Park in the Bronx, home sites for NJIT cross country. All except for Van Cortlandt Park are less than two miles from the NJIT campus.

LUBETKIN FIELD AT MAL SIMON STADIUM

The men's and women's soccer teams play their home games and practice on campus at Lubetkin Field at Malc Simon Stadium, a first-class venue for college soccer.

The field on the west end of NJIT's University Heights campus is an all-weather facility, with 24/7 availability for competition or practice. Outfitted with SprinTurf artificial grass in the summer of 2004, Lubetkin Field at Mal Simon Stadium also includes lighting for night contests, bleacher seating for more than 1,200 spectators, a press box and scoreboard.

The fully-enclosed facility, with its entrance a few feet opposite the entrance of the indoor Estelle and Zoom Fleisher Athletic Center, can take its place alongside any college soccer facility in the Northeast.

The home of Highlanders soccer served as the host site for the first-ever Great West

Conference women's soccer championship tournament in November 2009. Previously, NJIT hosted the three-day 2005 ECAC Division II women's soccer championship tournament.

In the fall of 2005, when the Northeast was hit with record rainfall, games went on without a hitch at Lubetkin Field, thanks to the quality of the surface. Indeed, with the rain disrupting schedules around the region, some crucial Big East contests involving Seton Hall were moved to NJIT's home field. Those games, too, went off without a hitch.



The Estelle and Zoom Fleisher Athletic Center

ESTELLE AND ZOOM FLEISHER ATHLETIC CENTER

The NJIT men's and women's basketball teams and men's and women's volleyball teams play their home games in the Fleisher Athletic Center gymnasium, while the swimming and diving team competes and practices in building's pool. The Fleisher Center also houses intercollegiate fencing, as well as all athletic department offices, varsity and general weight and fitness rooms, and the athletic training room.

In the summer of 2006, the gym underwent renovation to include installation of a new floor and baskets, new lighting, new sound system and new scoreboards, along with entirely new seating for approximately 1,500 spectators after the first phase of renovation. The back bay 'C gym' can be sectioned off from the

main competition floor, making the facility useful for intramurals, physical education classes and campus recreation time, while being able to host multiple simultaneous events.

A six-lane swimming pool in Fleisher Athletic Center is home to the NJIT swimming team. Fencing has its own area on the second floor of the building.

In addition to all athletic department offices, the Fleisher Athletic Center also houses the sports medicine staff in the Athletic Training Room and the varsity weight room, supervised by the head strength and condition coach. The building's third floor is home to a fitness center, which is open for use by all students and staff.

Athletics Facilities



THE NAIMOLI FAMILY ATHLETIC & RECREATION FACILITY

Opened in 2011, the facility is approximately 25,600 square feet. The Naimoli Family Center will be a multi-purpose space for athletics, community recreation, and gatherings involving large numbers of people.

Built on top of the old outdoor tennis courts adjoining the Fleisher Athletic Center, construction of this new building has been made possible, in part, by a generous gift from Vincent Naimoli '62, Chairman and CEO of Anchor Industries International and Chairman Emeritus/ Founder of the Tampa Bay Rays major league baseball team.

The facility houses courts for tennis and is available for other athletic and recreational activities, including practice for basketball and volleyball. It is heated and air conditioned, with flooring appropriate for the intended athletics and recreational activities.

Its indoor tennis courts offer vital year round practice and playing opportunities for NJIT's intercollegiate tennis teams, which have been consistently successful in the transition to Division I. In 2011, the women's tennis team became NJIT's first conference championship team in the Division I era.

BRANCH BROOK PARK AND VAN CORTLANDT PARK

A hallmark of the NJIT cross country program under veteran coach Al Alonso is its ability to host cross country competition that have made Highlander-sponsored races a popular destination for schools from throughout the New York/New Jersey area.

In 2009, NJIT hosted the Great West Conference championships at Van Cortlandt Park in the Bronx, and the course, which is home to some of the most prestigious events in the sport, is also the home venue for other annual NJIT-hosted races. Branch Brook Park, which is a public park of Essex County, reaches into several towns, including Newark, with the park entrance less than a mile from the NJIT campus.

TRACK FACILITIES

The NJIT men's and women's indoor track & field team trains at the Jersey City Armory which is home to a 6-lane indoor 200m track while the outdoor track & field team trains at the Nat Turner Park 6-lane outdoor 400m track.



NJIT Athletics Weight Room at Estelle and Zoom Fleisher Athletic Center



RED BULL ARENA

Located in Harrison, NJ, just across the Passaic River from Newark and less than three miles from the NJIT campus, the new home of the New York Red Bulls (opened in March 2010) sets the standard for soccer venues across North America.

The state-of-the-art soccer-specific facility is a major component of a multi-billion dollar development.

Red Bull Arena has a number of key design elements which give its seating bowl a close-to-the-action feeling and the unique stadium roof design extends from its leading edge over the entire seating bowl and then curve down to the concourse.

The overall seating capacity for soccer is 25,000, including 30 luxury suites (20 lower level and 10 upper level) and 1,116 club seats. Other amenities include three stadium clubs and two retail outlets.



BEARS AND EAGLES RIVERFRONT STADIUM

Bears and Eagles Riverfront Stadium, the \$30 million state-of-the-art home of professional baseball and, since 2004, the home of NJIT Highlanders baseball, officially opened to the public on July 16, 1999. With a seating capacity of 6,200, "The Den" affords fans an up-close view of the action. The ballpark also has 20 luxury suites, a picnic area, a party deck, a concert stage situated behind the outfield wall and a major league-caliber press box.

In December 2005, NJIT and the Bears held a joint press conference to herald a new partnership that includes a 10-year deal that extends Bears and Eagles Riverfront Stadium as the home of NJIT Highlanders baseball.

NJIT and the Atlantic Sun Conference



July 1, 2015 will go down as one of the most important days in the history of athletics at New Jersey Institute of Technology.

On that day, NJIT formally became a full member of the Atlantic Sun Conference, giving a Division I conference home to 14 of the 19 Highlander intercollegiate sports. For NJIT, which began the transition to NCAA Division I in 2003-04, becoming a championship-eligible member of the NCAA's highest level on September 1, 2009, membership in the A-Sun offers the University's student-athletes the full Division I experience for the first time.

About the Atlantic Sun Conference

For 37 years, the Atlantic Sun Conference has supported its member institutions in providing intercollegiate athletics programs committed to Building Winners for Life. The A-Sun meets its mission by maintaining the highest standards in academic and athletic achievement, creating a balance between student and athlete. Adding an emphasis on sportsmanship in the competitive arena and fostering leadership opportunities through community service, the A-Sun, its member institutions and its student-athletes aim for an overall educational experience that is successful in Building Winners for Life.

The 2014-15 season was another bright spot for the A-Sun for a number of reasons, as the conference and its member institutions celebrated record levels of excellence both on and off the field:

BUILDING

The student-athletes of the A-Sun consistently achieve academic accolades at all levels...

- Three institutions set record highs in the 2014-15 A-Sun

All-Academic honors. More than 68 percent of the student-athletes in the A-Sun posted a 3.0 grade point average or better, setting a new A-Sun record, including the nearly 86 percent of Lipscomb student-athletes honored as the Bisons claimed the league Academic Trophy for the second-straight year.

- For the sixth-consecutive year more than 60 percent of the A-Sun's teams were honored, a first for the conference. Also, for the third straight year at least three institutions recorded new highs in their final percentages of student-athletes honored academically.
- In addition to the institutional highs in the A-Sun All-Academic honors, a total of eight sports also recorded percentage highs and four sports also turned in totals of at least 80 percent of the teams recording a 3.0 GPA or better.
- Eleven total Atlantic Sun Conference male and female soccer programs received Team Academic honors from the NSCAA, and seven of eight A-Sun women's soccer teams were recognized by the NSCAA.
- A total of eleven A-Sun student athletes were honored with Capital One Academic All-District honors, with USC Upstate men's soccer player Marvin Schmiede earning All-American accolades based on his performance on and off the pitch.

WINNERS

... while performing at a high level in the competitive arena ...

- Three men's basketball teams earned invitations to postseason play with North Florida in the NCAA, while FGCU and USC Upstate both earned spots in the CIT. For the seventh-straight season, the conference earned a postseason victory as the Spartans defeated James Madison, 73-72 in the opening round.
- Ty Greene (USC Upstate) capped an exceptional career earning Player of the Year honors in the A-Sun, as well as national recognition by capturing the Lou Henson Award as the National Mid-Major Player of the Year.
- The 2015 A-Sun Men's Basketball Championship Final drew in a conference record 6,155 fans.
- FGCU women's basketball spent six weeks in the national rankings, en route to conference record-tying seventh seed in the NCAA Tournament. The Eagles posted the league's first women's basketball tournament victory since 1998 with a 75-67 opening round victory against Oklahoma State.

- Every A-Sun conference basketball game was aired on the ESPN family of networks. The Atlantic Sun accounted for 20 percent of ESPN3's college basketball inventory.
- USC Upstate softball advanced to the NCAA tournament for the third consecutive year, picking up a win against Fairfield. It marked the sixth consecutive time an A-Sun team has won an NCAA Regional match up.
- FGCU women's soccer hosted Auburn in the 2014 NCAA Tournament, marking the first time in school history an NCAA Championship event took place on campus and the first time an A-Sun women's soccer team hosted a tournament contest.

Atlantic Sun Conference
3370 Vineville Avenue, Suit 108-B
Macon, GA 31204-0790

Phone 478-474-3394
 Fax 478-474-4272
 Home page www.AtlanticSun.org

Commissioner: Ted Gumbart
 Associate Commissioner, Administration: Meredith Eaker
 Associate Commissioner, Operations: John Roberts
 Associate Commissioner, Compliance: Mike Hagen
 Assistant Commissioner, Media Relations: Patrick McCoy
 Director of Business Services: Pat Bush
 Director of Public Relations: Craig Threlkeld
 Director of Championships: Keith Hendrix
 Director of Media Relations: Johannes Schneider
 Director of Broadcast Services: Olivia Walter
 Assistant Director, Media Relations: Wilder Treadway
 Executive Assistant, Office Manager: Melody Battle

Additionally, 69 A-Sun teams in the 2013-14 measure posted at or above their sport-specific averages.

- The A-Sun also had 14 teams recognized by the NCAA for earning Public Recognition Awards, based on their most recent multi-year APR. These awards are given each year to teams with APRs in the top 10 percent in each sport. The A-Sun recorded at least 13 teams for the fourth straight year, and for the seventh consecutive year the A-Sun has had at least 10 teams earn the award. The A-Sun has totaled 124 Public Recognition Awards since they first were awarded in 2004-05.
- Jacksonville pitcher Brian Holcomb, a 17 year U.S. Navy veteran and wounded warrior, earned his first collegiate start at the age of 34 in 2015.

- For the first time in conference history two A-Sun Volleyball teams were awarded spots in the NCAA Tournament field of 64 with Jacksonville receiving the automatic bid and Lipscomb earning the league's first at large selection.
- Men's golf sent a record-tying four teams to the NCAA Regionals, giving the conference at least two teams in Regional play for eight-straight years.
- FGCU men's tennis head coach CJ Weber was named the Wilson/Intercollegiate Tennis Association Southeast Region Coach of the Year.
- North Florida's Donnie Dewees was selected in the second round by the Chicago Cubs, giving the A-Sun three players in the last three years selected in the first two rounds of the MLB First Year Player Draft (Max Pentecost, 2014 and Chris Anderson, 2013)
- The second annual A-Sun Winners for Life Team honored student-athletes from each of the eight member institutions who best represent the A-Sun's commitment to "Building Winners for Life." Those student-athletes maintain the highest standards in academic and athletic achievement; represent a true balance between student and athlete; exhibit and promote sportsmanship in the competitive experience; and exhibit leadership through community service on- and off-campus and at home.
- For the second consecutive year, seven Atlantic Sun Conference member institutions were named to the 2014 President's Higher Education Community Service Honor Roll, one with distinction.

The Atlantic Sun Conference is a NCAA Division I league with eight member institutions committed to Building Winners for Life. The A-Sun meets the challenge of maintaining the highest standards in academic and athletic achievement with a true balance between student and athlete. Headquartered in Macon, Ga., the A-Sun footprint reaches into seven of the top 50 media markets in the nation. The A-Sun includes a blend of the most prestigious and dynamic private and public institutions in the region: Florida Gulf Coast University, Jacksonville University, Kennesaw State University, Lipscomb University, New Jersey Institute of Technology, University of North Florida, University of South Carolina Upstate and Stetson University.

FOR LIFE!

...and preparing themselves to become valuable members of their community .

- A total of 14 Atlantic Sun Conference teams posted perfect scores for the 2013-14 academic year and 98 percent cleared the NCAA's standard benchmark in the NCAA's 11th annual Academic Progress Rate report. A total of 67 A-Sun teams met or exceeded the most recent four-year Division I APR of 978.

2015-16 Rosters

MEN'S TENNIS

NAME	YR.	HT.	WT.	HOMETOWN/HIGH SCHOOL
Andres Alban	Sr.	5-8	140	Bogota, Colombia / Colegio Andino
Javier Allende	Fr.	6-1	175	Barcelona, Spain / Colegio Loreto
Pablo Arrutia	Fr.	5-9	135	Getxo, Spain / Azkorri
Zac Castagna	Fr.	6-0	170	Pitman, NJ / Pitman
Jan Cimrman	So.	6-1	170	Karlsruhe, Germany / Walghfeid-Strabo Gymnasium
Arnaud Holl	Sr.	6-0	160	Baden, Germany / Gymnasium Walldorf
Luka Kaic	So.	6-1	176	Belgrade, Serbia / Sixth Belgrade Gymnasium
Richard Rangga	So.	5-10	175	Clifton, NJ / Clifton
Markus Schultz	Sr.	6-1	175	Hägersten, Stockholm / Jensen Gymnasium Vastra
Lukas Zvikas	Fr.	6-0	165	Siaulini, Lithuania / Sauletekis Gymnasium

WOMEN'S TENNIS

NAME	YR.	HT.	HOMETOWN/HIGH SCHOOL
Tiffany Barnes	So.	5-5	Hopatcong, NJ / Hopatcong
Nathalie Habegger	Jr.	5-9	Gland, Switzerland / Gynbase de Nyon
Amanda Helminsky	Fr.	5-10	Sao Paulo, Brazil / Liceu High School
Alba Rosas Garcia	So.	5-6	Barcelona, Spain / Institut Menendez i Pelayo
Rafaella Sampaio	Fr.	5-9	Sao Paulo, Brazil / Campos Salles
Natalija Tasovac	So.	5-6	Belgrade, Serbia / Hospitality & Tourism
Ines Vujkovic	So.	5-8	Belgrade, Serbia / Deveta gimnazija Mihailo Petrovic Alas

Head Coach Ira Miller



Ira Miller, one of the most successful college tennis coaches in the East, has joined NJIT in July 2014, where he will guide the school's already-successful men's and women's teams.

Miller, a nine-time Northeast Conference Coach of the Year and a member of the athletics Hall of Fame at two different New Jersey colleges, will lead the two Highlander programs that have known uninterrupted

success dating back to when NJIT competed in NCAA Division II through to the move to the Division I level, which the Highlanders entered in 2006-07.

Miller, a cum laude graduate (BA) of Clark University in



Worcester, MA, and The American Film Institute (MFA) in Los Angeles, Miller played four years on the varsity at Clark and was a team captain as a senior

He has coached at three different institutions—Fairleigh Dickinson University in Teaneck, NJ; Drew University in Madison, NJ; and Yeshiva University in New York City. He won multiple conference championships at FDU and Drew and in his only season at Yeshiva (Spring 2014) he led the program to a conference championship and an NCAA Division III National Tournament berth, becoming the first Yeshiva team in any sport to qualify for NCAA postseason play.

"We are pleased that a coach with Ira's experience and success was interested in our position," said Kaplan in announcing the move. "His track record of graduating high-achieving, smart tennis players was something that put his resume at the top of our list."

Miller began his college coaching in 1985 at Fairleigh Dickinson and he guided programs there in three separate stints (1985-88, 1994-98, and 2005-12). He coached Drew from 1998 through 2005 and was men's tennis coach at Yeshiva University this year.

At FDU, he directed NEC men's titles in 1988, 1996, 1997, 1998, 2007, 2008, and 2012 and women's NEC titles in 1987 and 2012.

He was selected as NEC Coach of the Year in men's tennis seven times and was NEC women's Coach of the Year three times.

In 2012, Miller was voted as ITA (Intercollegiate Tennis Association) Northeast Region Coach of the Year for women's tennis.

He led FDU teams into the NCAA Division I tournament three times with the men (2007, 2008, and 2012) and he steered the Knight women into the 2012 NCAAAs. His 1996 FDU team was Eastern College Athletic Conference South champion,

In Miller's seven-year tenure at NCAA Division III Drew, he led teams to seven Freedom Conference championships, winning five in a row with the men (2001 to 2005) and one with the women in 2003.

He was inducted into the Fairleigh Dickinson Hall of Fame in 2004 and into the Drew Hall of Fame in 2011 as coach of the school's 2001 championship team.

Coupled with the stream of success in competition, his teams have excelled as students, earning a total of 33 team academic awards from the ITA, which is the governing body of college tennis. His players have earned 93 ITA Scholar-Athlete awards as individuals.

His most recent women's team at Fairleigh Dickinson posted the highest team GPA (3.7) in the Knights' program for 2012. Both teams were honored by the NEC in 2010 and 2012 for the highest team GPA in their respective sports among conference teams.

His coaching extends outside the college ranks, as he is director of the adidas tennis camp in Mahwah, NJ and was adidas Caribbean director from 2010 to 2012.

In United States Tennis Association (USTA) competition, he guided girls and boys age group 16 teams to gold medals in 2006 and 2007. He also coached the United States boys and girls national teams in the 1999 Pan American Maccabi Games in Mexico City. The games are international competitions for Jewish athletes, with competition organized on a model similar to the Pan American games, which, in turn, are modeled after the Olympics, but on a smaller scale with teams from this hemisphere.

In coming to NJIT, Coach Miller will work with a solid foundation that has built up for nearly a decade. In 2005, women's tennis earned an NCAA Division II national berth, the only NJIT team to do so in the program's membership in DII that lasted from 1997 to 2006 (teams were not eligible for NCAA postseason in 2005-06 due to having declared the intention to move to Division I).

The women's team won back-to-back Great West Conference championships in 2011 and 2012. The GWC did not have an automatic berth in the NCAA DI field, but NJIT joined an automatically qualifier conference in 2014, when it became an associate member of the America East Conference. In its first try at a Division I NCAA bid, NJIT reached the 2014 America East finals before falling to 3-time defending champ Stony Brook.

NJIT has not been in a Division I conference in men's tennis, but facing a strong regional schedule, the Highlanders posted a 30-12 match record over the last two seasons. In 2013-14, the NJIT men notched a 14-6 record, including 6-1 over the last seven. The women were 11-8, including 7-3 in the last seven matches and 2-1 in the America East tournament.

Beginning Division I competition in 2006-07, the NJIT men have posted records at .500 or above in seven of eight seasons, with a top mark of 18-7 in 2009-10. The NJIT women have had winning records all eight years in Division I, with a high of 21-3 in 2011-12.



Assistant Coach Jacob Meyer



Jacob Meyer joined the NJIT coaching staff for the men's and women's tennis team in January 2015. In joining the tennis staff, Meyer is excited to team up with Hall of Fame Coach Ira Miller.

Coach Meyer wealth of experience includes cutting edge biomechanics methodologies, video analysis, and a thorough background in functional strength training.

Meyer has guided men's and women's tennis teams to seven conference titles

including five appearances at the NCAA tournament and two at the NAIA National Tournament.

Most recently he was assistant coach for the Savannah College of Art and Design in Atlanta, where both men's and women's teams were consistently ranked in the Top 20 nationally.

Previously, Meyer was the head coach for Agnes Scott College in Atlanta. Meyer's first college coaching experience dates back to his alma mater, where he began as a women's volunteer assistant coach at Emory in 2004.

He has worked privately as an ATP coach and served as an ATP physio. Meyer was contracted as a Women's Tennis Association (WTA) racquet and string technician, served in country clubs and junior academies in Atlanta, taught private tennis lessons, ran strength clinics and has run speed & strength programs for college teams.

Meyer is an NSCA certified strength and conditioning specialist, ACSM certified exercise physiologist, and level two USA Weightlifting Sports Performance Coach.

He holds major tennis certifications, including the USPTA Elite Professional, PTR Adult Professional, and USTA High Performance designations.

"The constant thread in coach Meyer's career," says NJIT Director of Tennis Ira Miller, "Is his pursuit of excellence and love for teaching and learning. We are very fortunate to have him on board and he will be big part of taking the men's team to the highest national level."

Meyer resides in Cornwall, NY with his wife Lyndsey,

Graduate Assistant Coach Livia Gherman



Livia Gherman has joined the NJIT coaching staff for the men's and women's tennis teams in August 2014.

Gherman, who earned bachelor's (2011) and master's degrees (2013) from NJIT's America East Conference women's tennis rival University at Albany, began her coaching career in 2013-14 at Fairleigh Dickinson University in Teaneck, NJ.

A native of Romania, Gherman began her career as a college student-athlete at Washington State University, where she competed as a freshman and as a sophomore, with an appearance by the Cougars in the NCAA Division I Tournament. She was named to the Pac 10 Conference All-Academic team following both of her years at Washington State.

She transferred to UAlbany for her final two years and was the Most Valuable Player for the Great Danes in 2009-10 and a member of the All-America East Conference second doubles team. She graduated magna cum laude from UAlbany in 2011 with a BS in Business Administration. Her MS is in educational administration and policy studies-higher education.

Moving to coaching, Gherman assisted with FDU's Northeast Conference women's champions, who advanced to the 2014 NCAA Tournament, where they were eliminated by sixth-ranked California.

As an undergraduate at UAlbany, she was a membership sales representative for campus recreation and also held internships with the Great Dane athletics department in marketing and promotions and in media relations.

Gherman was active in volunteer community service throughout her college years, both in Washington and in the Albany area.

Men's Statistics and Results

Overall record: 12-10 • Conference: 0-0 • Region: 0-0 • Home: 6-0 • Away: 6-10 • Neutral: 0-0
vs National ranked: 0-1 • vs Regional ranked: 0-1

MEN'S SINGLES

											vs Ranked			
	Overall	Dual	Tour	Conf	1	2	3	4	5	6	Nat'l	Reg'l	Streak	Last10
Andres Alban	18-13	13-9	5-4	0-0	0-1	13-8	---	---	---	---	0-1	0-1	L 1	6-4
Jan Cimrman	10-8	10-8	0-0	0-0	---	---	3-3	7-5	---	---	0-0	1-0	W 2	5-5
Arnaud Holl	12-12	11-11	1-1	0-0	0-1	1-0	7-9	3-1	---	---	0-1	0-1	L 3	2-8
Carl Jedlinski	3-8	2-5	1-3	0-0	---	---	---	0-3	---	2-2	0-0	0-0	W 1	3-7
Luka Kaic	8-15	8-13	0-2	0-0	---	---	---	---	0-4	8-9	0-0	0-1	L 1	3-7
Richard Rangka	14-11	10-11	4-0	0-0	---	---	---	1-2	9-9	---	0-0	0-1	L 1	3-7
Markus Schultz	18-8	15-6	3-2	0-0	15-5	---	---	---	---	0-1	0-0	0-1	L 1	5-5
Totals	83-75	69-63	14-12	0-0	15-7	14-8	10-12	11-11	9-13	10-12	0-2	1-5		
Percentage	.525	.523	.538	.000	.682	.636	.455	.500	.409	.455	.000	.167		

MEN'S DOUBLES TEAMS

											vs Ranked			
	Overall	Dual	Tour	Conf	1	2	3	Nat'l	Reg'l	Streak	Last10			
Andres Alban/Arnaud Holl	1-1	0-0	1-1	0-0	---	---	---	0-0	0-0	W 1	1-1			
Carl Jedlinski/Luka Kaic	2-2	0-1	2-1	0-0	---	---	0-1	0-0	0-0	L 2	2-2			
Andres Alban/Markus Schultz	3-3	2-1	1-2	0-0	2-1	---	---	0-0	0-0	W 1	3-3			
Arnaud Holl/Carl Jedlinski	2-2	2-2	0-0	0-0	0-1	2-1	---	0-0	0-0	L 2	2-2			
Luka Kaic/Richard Rangka	6-9	6-9	0-0	0-0	---	0-1	6-8	0-1	0-1	L 1	3-7			
Arnaud Holl/Markus Schultz	10-7	10-7	0-0	0-0	10-6	---	0-1	0-0	0-1	L 1	6-4			
Andres Alban/Jan Cimrman	11-7	11-7	0-0	0-0	0-1	11-6	---	0-1	0-1	L 1	4-6			
Carl Jedlinski/Richard Rangka	2-2	2-2	0-0	0-0	---	---	2-2	0-0	0-0	L 1	2-2			
Totals	37-33	33-29	4-4	0-0	12-9	13-8	8-12	0-2	0-3					
Percentage	.529	.532	.500	.000	.571	.619	.400	.000	.000					

Overall record: 12-10 • Conference: 0-0 • Region: 0-0 • Home: 6-0 • Away: 6-10 • Neutral: 0-0
vs National ranked: 0-1 • vs Regional ranked: 0-1

Team match-by-match— MEN

Date	Opponent	Score	SINGLES						DOUBLES		
			1	2	3	4	5	6	1	2	3
Oct 24, 2014	at Stony Brook	W 4-3	L	L	W	L	W	W	W	W	L
Oct 25, 2014	at Army	W 5-2	W	W	W	L	W	L	L	W	W
Oct 25, 2015	at Marist	L 2-5	W	L	L	L	L	L	W	L	W
Jan 30, 2015	at Fairfield	W 7-0	W	W	W	W	W	W	W	W	L
Feb 7, 2015	FDU	W 7-0	W	W	W	W	W	W	W	W	W
Feb 8, 2015	SACRED HEART	W 6-1	W	W	L	W	W	W	W	W	W
Feb 8, 2015	SAINT PETER'S	W 6-1	W	L	W	W	W	W	W	W	W
Feb 11, 2015	at Penn	L 1-6	W	L	L	L	L	L	L	W	L
Feb 20, 2015	at Wofford	L 2-5	L	W	L	W	L	L	L	W	L
Feb 21, 2015	at Appalachian State	L 3-4	W	W	W	L	L	L	L	W	L
Feb 22, 2015	at Winthrop	L 3-4	W	W	L	W	L	L	L	L	L
Mar 6, 2015	ST. FRANCIS BROOKLYN	W 7-0	W	W	W	W	W	W	W	W	W
Mar 8, 2015	MONMOUTH	W 4-3	L	W	W	L	Lr	W	W	W	L
Mar 13, 2015	NYIT	W 4-3	W	W	L	W	L	W	W	L	L
Mar 14, 2015	at Drexel	W 4-2	W	W	L	W	L	W	.	.	.
Mar 17, 2015	at Charlotte	L 0-7	L	L	L	L	L	L	L	L	u
Mar 18, 2015	at Presbyterian College	L 1-6	W	L	L	L	L	L	W	L	L
Mar 27, 2015	at St. John's	L 1-6	L	W	L	L	L	L	L	L	W
Apr 4, 2015	at Saint Joseph's	W 6-1	W	W	W	W	W	L	W	W	L
April 5, 2015	at #49 Penn State	L 0-7	L	L	L	L	L	L	L	L	L
Apr 12, 2015	at Hofstra	W 6-1	W	W	L	W	W	W	W	W	W
Apr 29, 2015	at #7 Concordia (N.Y.)	L 1-8	L	L	W	L	L	L	L	L	L

Women's Statistics and Results

Overall record: 3-16 • Conference: 0-0 • Region: 0-0 • Home: 2-4 • Away: 1-12 • Neutral: 0-0

vs National ranked: 0-0 • vs Regional ranked: 0-0

WOMEN'S SINGLES

	vs Ranked												Streak	Last10
	Overall	Dual	Tour	Conf	1	2	3	4	5	6	Nat'l	Reg'l		
Tiffany Barnes	0-3	0-3	0-0	0-0	---	---	---	---	0-1	0-2	0-0	0-0	L 3	0-3
Valerie Carroll	0-17	0-16	0-1	0-0	---	---	---	---	0-5	0-11	0-0	0-0	L 17	0-10
Alba Rosas Garcia	5-13	5-13	0-0	0-0	---	---	3-12	2-1	---	---	0-0	0-0	L 4	2-8
Nathalie Habegger	8-12	6-12	2-0	0-0	---	6-12	---	---	---	---	0-0	0-0	L 1	3-6
Chloe Moxham	0-3	0-0	0-3	0-0	---	---	---	---	---	---	0-0	0-0	L 3	0-3
Sydney Nowak	0-11	0-10	0-1	0-0	---	---	---	0-1	0-6	0-3	0-0	0-0	L 11	0-9
Natalija Tasovac	0-7	0-7	0-0	0-0	---	---	---	0-1	0-6	---	0-0	0-0	L 7	0-7
Ines Vujkovic	4-22	2-14	2-8	0-0	---	---	0-4	2-10	---	---	0-0	0-0	L 4	1-8
Carolina Zanotta	5-23	4-14	1-9	0-0	4-14	---	---	---	---	---	0-0	0-0	L 4	2-7
Totals	25-112	20-90	5-22	0-0	4-14	6-12	3-16	4-13	0-19	3-16	0-0	0-0		
Percentage	.182	.182	.185	.000	.222	.333	.158	.235	.000	.158	.000	.000		

WOMEN'S DOUBLES TEAMS

WOMEN'S DOUBLES TEAMS	vs Ranked										
	Overall	Dual	Tour	Conf	1	2	3	Nat'l	Reg'l	Streak	Last10
Ines Vujkovic/Carolina Zanotta	0-3	0-0	0-3	0-0	---	---	---	0-0	0-0	L 3	0-3
Chloe Moxham/Carolina Zanotta	1-1	0-0	1-1	0-0	---	---	---	0-0	0-0	L 1	1-1
Alba Rosas Garcia/Ines Vujkovic	1-11	1-9	0-2	0-0	---	1-9	---	0-0	0-0	L 4	1-9
Nathalie Habegger/Carolina Zanotta	6-9	5-7	1-2	0-0	5-7	---	---	0-0	0-0	L 3	4-6
Valerie Carroll/Sydney Nowak	0-7	0-5	0-2	0-0	---	---	0-5	0-0	0-0	L 7	0-7
Alba Rosas Garcia/Natalija Tasovac	0-4	0-4	0-0	0-0	---	0-4	---	0-0	0-0	L 4	0-4
Tiffany Barnes/Valerie Carroll	0-2	0-2	0-0	0-0	---	---	0-2	0-0	0-0	L 2	0-2
Sydney Nowak/Natalija Tasovac	0-2	0-2	0-0	0-0	---	---	0-2	0-0	0-0	L 2	0-2
Sydney Nowak/Ines Vujkovic	1-6	1-6	0-0	0-0	---	0-1	1-5	0-0	0-0	L 4	1-6
Natalija Tasovac/Carolina Zanotta	0-4	0-4	0-0	0-0	0-4	---	---	0-0	0-0	L 4	0-4
Alba Rosas Garcia/Nathalie Habegger	0-3	0-3	0-0	0-0	---	0-3	---	0-0	0-0	L 3	0-3
Valerie Carroll/Nathalie Habegger	0-1	0-1	0-0	0-0	---	---	0-1	0-0	0-0	L 1	0-1
Totals	12-53	10-43	2-10	0-0	5-11	1-17	4-15	0-0	0-0		
Percentage	.185	.189	.167	.000	.312	.056	.211	.000	.000		

Overall record: 3-16 • Conference: 0-0 • Region: 0-0 • Home: 2-4 • Away: 1-12 • Neutral: 0-0
vs National ranked: 0-0 • vs Regional ranked: 0-0

Team match-by-match— WOMEN

Date	Opponent	Score	SINGLES						DOUBLES		
			1	2	3	4	5	6	1	2	3
Jan 31, 2015	LIU BROOKLYN	L 1-6	L	L	L	W	L	L	L	L	L
Feb 1, 2015	at UMBC	L 2-5	W	L	L	W	L	L	u	L	L
Feb 6, 2015	at Akron	L 0-7	L	L	L	L	L	L	W	L	L
Feb 7, 2015	at Liberty	L 0-7	L	L	L	L	L	L	L	L	L
Feb 8, 2015	at Youngstown State	L 2-4	L	L	L	.f	Ld	Wd	W	L	Wd
Feb 15, 2015	SACRED HEART	L 1-6	L	W	L	L	L	L	W	L	L
Feb 15, 2015	SAINT PETER'S	W 6-1	W	W	W	W	L	Wd	W	W	Wd
Feb 20, 2015	at Rutgers	L 0-7	L	L	L	L	L	L	L	L	L
Feb 27, 2015	SETON HALL	L 1-6	L	W	L	Lr	L	L	L	L	L
Mar 14, 2015	FDU	W 4-3	W	W	L	L	L	Wd	W	L	Wd
Mar 17, 2015	at Charlotte	L 0-7	L	L	L	L	L	L	u	L	L
Mar 18, 2015	at UNC Asheville	L 1-6	L	L	W	L	L	L	L	L	L
Mar 28, 2015	STONY BROOK	L 0-7	L	L	L	Lr	L	L	L	L	L
Apr 11, 2015	at Marist	W 4-3	W	W	W	W	L	L	L	L	L
Apr 12, 2015	at Hofstra	L 0-7	L	L	L	L	L	L	L	L	W
Apr 14, 2015	at St. John's	L 0-7	L	L	L	L	L	L	u	L	L
Apr 18, 2015	at UAlbany	L 1-6	L	W	Lr	L	L	L	L	L	L
Apr 19 2015	at Binghamton	L 0-7	L	L	L	L	L	L	L	L	L
Apr 24, 2015	at Binghamton	L 0-4	u	u	L	u	L	L	L	u	L

Men's Year-by-Year Results

1935-36 (7-0)

St. Peter's	W 4-3
Webb Naval	W 5-2
Hudson	W 5-0
Rutgers College of Pharmacy	W 5-0
St. Peter's	W 6-1
Montclair State Teachers	W 7-3
Newark Normal	W 7-0

Coach: Robert Van Houten

** Schedule Incomplete

1936-37 (7-0)

John Marshall	W 8-1
Webb Naval	W 6-3
Montclair State Teachers	W 6-3
Newark State Teachers	W 6-3
St. Peters	W 7-2
Panzer	W 6-3
Hudson	W 9-0

Coach: Robert Van Houten

** Schedule Incomplete

1939-40 (5-2)

Brooklyn Poly	W
St. Peter's	W
Newark State Teachers	W
Webb Naval	W
Newark	W
Drew	L
Montclair State Teachers	L

Coach: Mr. William Jordan

** Schedule Incomplete

1940-1941(3-3)

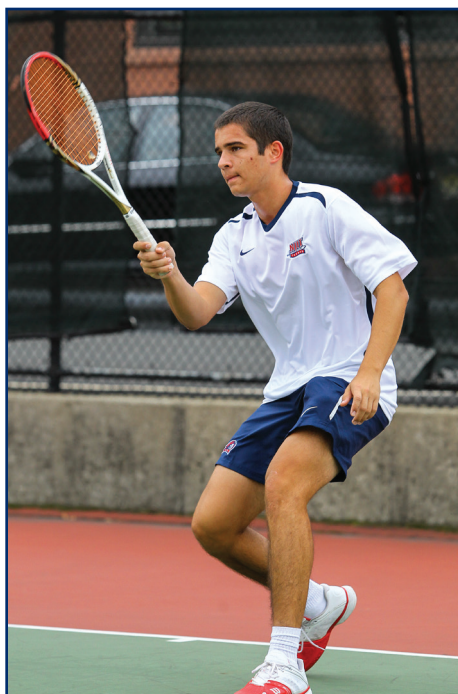
Drew	L
Upsala	L
Rutgers Pharmacy	W
Wagner	W
Webb	cancelled
Seton Hall	L
Montclair State Teachers	W
Newark State Teachers	

Coach: Mr. William Jordan

** Schedule Incomplete

1941-1942

Drew	
Seton Hall	
Wagner	L
Montclair State Teachers	



Luca Kaic

Upsala	
Webb Institute	
Newark	L

Coach: Mr. William Jordan

** Schedule Incomplete

1942-43

Coach: Mr. William Jordan

** Schedule Incomplete

1949-50

4/15	Drew	L 2-7
5/6	Fairleigh Dickinson	W 7-2
5/12	Newark Rutgers	L 3-6
5/13	Paterson State	W 8-1
5/20	Montclair State	W 5-3
5/27	St. Peter's	W 7-0
6/3	Pace	

** Schedule Incomplete

1950-51

4/14	Fairleigh Dickinson	W 9-0
4/21	Stevens Institute	L 2-7
4/28	Montclair State	W 8-1
5/5	Upsala	W 7-2

5/12	Newark Rutgers
5/19	Drew
5/26	St. Peter's

Coach: Bowe

** Schedule Incomplete

1951-52

4/12	Stevens Tech	L 3-6
4/19	Newark Rutgers	W
4/26	Montclair State	W
5/3	Fairleigh Dickinson	W
5/10	N.J.I.A.C. Tournament	
5/17	Drew	W
5/24	Upsala	L 3-6

Coach: Fithian

** Schedule Incomplete

1961-62

Jersey City State	W 9-0
Trenton State	W
at Seton Hall	
Eastern Intercollegiate Tournament	

(at Colgate)

** Schedule Incomplete

1963-1964 (3-6)

Upsala	L 2-7
Jersey City	W 8-1
St Peter's	W 5-4
Montclair State	W 5-4
Stevens	L 0-9
Drew	L 1-8
Newark Rutgers	L 3-6
Seton Hall	L 2-7
Trenton State	L 0-9

Coach: Alex Bedrosian

** Schedule Incomplete

1964-65 (6-4)

4/3	at Upsala	L 1-8
4/10	MONTCLAIR STATE	W 6-3
4/12	at Saint Peter's	W 9-0
4/13	at Rutgers-Newark	cancelled
4/14	at Trenton State	L 2-7
4/15	NEWARK STATE	W 8-0
4/17	at Stevens	W 6-3
4/24	at Pace	W 9-0
5/1	at Drew	W 5-4
5/8	SETON HALL	L 2-7
5/15	at Monmouth	L 0-9

Coach: Alex Bedrosian

1965-66 (4-6)		
3/26	at Newark State	W 8-1
4/2	at FDU-Madison	L 0-9
4/9	at Montclair State	L 3-6
4/11	at Monmouth	L 0-9
4/12	RUTGERS-NEWARK	L 1-7
4/13	at Trenton State	cancelled
4/16	at Seton Hall	W 5-4
4/23	at Pace	W 5-4
4/30	at Drew	W 6-3
5/7	at Stevens	L 2-7
5/14	at Upsala	L 0-9
Coach: Alex Bedrosian		

1966-67 (6-1)		
4/1	at Upsala	L 1-8
4/8	MONTCLAIR STATE	W 5-4
4/11	NEWARK STATE	W 8-1
4/15	SETON HALL	W 8-1
4/22	at Trenton State	W 6-3
4/29	at Drew	W 5-4
5/6	STEVENS	cancelled
5/13	BLOOMFIELD	W 8-1
Coach: Alex Bedrosian		

1967-68(8-2)		
3/30	FDU-MADISON	W 6-3
4/1	UPSALA	L 3-6
4/4	at Rutgers-Newark	W 6-2
4/6	at Montclair State	W 5-4
4/13	at Seton Hall	W 7-2
4/20	TRENTON STATE	W 6-3
4/27	BLOOMFIELD	W 9-0
5/4	at Drew	W 5-4
5/11	at Stevens	L 1-8



Markus Schultz

5/18	at Newark State	W 6-0
Coach: Alex Bedrosian		

1968-69 (7-3)		
3/29	at FDU-Madison	W 7-2
4/2	at Rutgers-Newark	L 4-5
4/5	at Montclair State	W 6-3
4/12	SETON HALL	W 6-3
4/16	at Upsala	cancelled
4/19	at Trenton State	W 8-1
4/26	at Drew	L 2-7
4/30	JERSEY CITY STATE	W 7-2
5/3	STEVENS	L 3-5
5/10	BLOOMFIELD	W 7-2
5/17	NEWARK STATE	W 7-1
Coach: Alex Bedrosian		

1969-70 (11-1)		
4/4	at Monmouth	W 7-2
4/8	FDU-MADISON	W 7-2
4/11	at Seton Hall	W 8-1
4/15	at Upsala	W 9-0 (forfeit)
4/18	TRENTON STATE	W 6-3
4/22	at Rutgers-Newark	W 7-2
4/25	at Drew	L 2-7
4/29	MONTCLAIR STATE	W 5-4
5/2	at Stevens	W 5-4
5/9	SAINT PETER'S	W 9-0
5/13	PRATT	W 8-1
5/16	at Newark State	W 1-0 (default)
Coach: Alex Bedrosian		

1970-71 (12-0)		
3/24	SETON HALL	W 9-0
3/27	at FDU-Madison	W 7-2
3/31	UPSALA	W 8-1
4/3	RUTGERS-NEWARK	W 7-2
4/7	MONMOUTH	W 8-1
4/17	at Saint Peter's	W 7-2
4/21	BLOOMFIELD	W 9-0
4/24	DREW	W 6-3
5/1	at Trenton State	W 8-1
5/5	STEVENS	W 8-1
5/8	PRATT	cancelled
5/12	NEWARK STATE	W 9-0
5/19	at Montclair State	W 6-3
Coach: Alex Bedrosian		

1971-72 (7-3)		
3/25	FDU-MADISON	W 6-3
4/5	at Rutgers-Newark	L 4-5
4/8	at Seton Hall	W 6-3
4/12	at Pratt	W 7-2
4/19	BLOOMFIELD	W 9-0
4/26	MONTCLAIR STARE	W 5-4

4/29	at Monmouth	L 3-6
5/3	TRENTON STATE	L 3-6
5/10	at Newark State	W 8-1
5/13	at Drew	W 6-3
Coach: Alex Bedrosian		

1972-73 (3-8)		
3/24	FDU-MADISON	W 9-0 (forfeit)
3/28	at Stevens	L 3-6
3/31	at Monmouth	L 3-6
4/7	at Seton Hall	L 4-5
4/14	SAINT PETER'S	L 4-5
4/18	BLOOMFIELD	W 8-1
4/21	TRENTON STATE	L 4-5
4/25	MONTCLAIR STATE	L 2-7
5/2	at Upsala	L 1-8
5/5	at Pratt	W 5-4
5/12	at Drew	L 2-7
Coach: Alex Bedrosian		

1973-74(4-6)		
3/23	FDU-MADISON	L 4-5
3/30	at Monmouth	cancelled
4/3	at Upsala	L 1-8
4/6	at Seton Hall	W 5-4
4/10	at Pratt	cancelled
4/13	SAINT PETER'S	cancelled
4/17	at Rutgers-Newark	L 4-5
4/20	TRENTON STATE	L 1-8
4/24	MONTCLAIR STATE	L 0-9
4/27	JERSEY CITY STATE	W 5-4
5/1	BLOOMFIELD	W 8-1
5/4	at Stevens	L 3-6
5/8	at Newark State	W 7-2
5/11	at Drew	L 4-5
Coach: Alex Bedrosian		

1974-75(0-0)		
3/22	at FDU-Madison	—
3/26	PRATT	W 9-0
3/29	at Monmouth	—
4/2	RAMAPO	W 6-3
4/5	SETON HALL	—
4/9	UPSALA	L 0-9
4/12	SAINT PETER'S	—
4/16	at Trenton State	—
4/23	at Montclair	—
4/26	at Jersey City State	—
4/30	BLOOMFIELD	—
5/3	STEVENS	—
5/7	NEWARK STATE	—
5/10	DREW	—
Coach: Alex Bedrosian		

Men's Year-by-Year Results

1975-76 (0-0)

3/27	at Monmouth	—
3/31	RAMAPO	—
4/3	at Seton Hall	—
4/10	SAINT PETER'S	—
4/14	at Rutgers-Newark	—
4/17	TRENTON STATE	—
4/21	MONTCLAIR	—
4/24	JERSEY CITY STATE	—
4/28	at Drew	—
5/1	at Stevens	—
5/5	at Kean	—
5/8	PRATT	—
5/12	FDU-MADISON	—

Coach: Remsen Becker

1976-77 (0-0)

3/30	at Ramapo	W 6-3
4/2	SETON HALL	—
4/6	MONMOUTH	—
4/9	at Saint Peter's	—
4/13	RUTGERS-NEWARK	—
4/16	at Trenton State	—
4/20	at Montclair	—
4/23	at Jersey City State	—
4/27	DREW	—
4/30	POLY	—
5/4	KEAN	—
5/7	STEVENS	—
5/11	at FDU-Madison	—

Coach: Remsen Becker

1977-78 (8-4)

3/29	RAMAPO	W 8-1
4/1	at Seton Hall	W 7-2
4/5	at Monmouth	W 6-1
4/8	SAINT PETER'S	W 6-3
4/12	at Rutgers-Newark	W 7-2
4/15	TRENTON STATE	L 4-5
4/19	MONTCLAIR	cancelled
4/22	JERSEY CITY STATE	W 6-3
4/26	at Drew	L 2-7
4/29	at NYU-Poly	W 8-1
5/3	at Kean	L 1-7
5/6	at Stevens	W 5-4
5/10	FDU-MADISON	L 3-6

Coach: Remsen Becker

1978-79 (0-0)

3/28	at Ramapo	—
3/31	SETON HALL	—
4/4	MONMOUTH	—

4/7	at Saint Peter's	—
4/11	RUTGERS-NEWARK	—
4/14	TRENTON STATE	—
4/18	at Montclair State	—
4/21	at Jersey City State	—
4/25	DREW	—
4/28	NYU-POLY	—
5/2	KEAN	—
5/5	STEVENS	—
5/7	at Yeshiva	—
5/9	at FDU-Madison	—

Coach:

1979-80 (7-5)

3/26	RAMAPO	W 6-3
3/29	at Seton Hall	cancelled
4/2	at Monmouth	W 9-0
4/5	SAINT PETER'S	W 6-3
4/12	at Trenton State	L 3-6
4/16	MONTCLAIR STATE	L 0-8
4/19	JERSEY CITY STATE	W 9-0
4/23	at Drew	W 8-1
4/26	at NYU-Poly	W 9-0
4/27	YESHIVA	cancelled
4/30	at Kean	L 4-5
5/4	at Stevens	L 2-7
5/7	FDU-MADISON	L 1-5
5/15	YESHIVA	W 8-0

Coach: Harold Deutschman

1980-81 (1-5)

3/22	YESHIVA	L 3-6
3/25	at Ramapo	L 3-6
3/28	SETON HALL	cancelled
4/1	MONMOUTH	W 8-1
4/4	SAINT PETER'S	L 3-6
4/8	TRENTON STATE	L 0-9
4/11	RUTGERS-NEWARK	cancelled
4/15	at Montclair State	L 2-7

Coach: Harold Deutschman

1981-82 (3-6)

3/24	RAMAPO	L 1-5
3/27	at Seton Hall	L 0-9
3/31	YESHIVA	cancelled
4/3	at Saint Peter's	L 3-6
4/7	at Trenton State	cancelled
4/10	at Rutgers-Newark	cancelled
4/14	at Montclair State	L 0-9
4/17	at Jersey City State	cancelled
4/21	MARITIME	W 7-2
4/24	NYU-POLY	W 7-2
4/28	DREW	L 0-9



Jan Cimrman

5/1	at Stevens	L 3-6
5/3	at Yeshiva	W 6-3

Coach: Harold Deutschman

1982-83 (2-9)

3/16	YESHIVA	L 1-8
3/23	at Ramapo	L 4-5
3/26	SETON HALL	L 2-7
3/30	KEAN	W 7-2
4/2	at Saint Peter's	L 2-7
4/6	TRENTON STATE	L 1-8
4/9	RUTGERS-NEWARK	L 0-9
4/13	at Montclair State	L 0-9
4/16	JERSEY CITY STATE	cancelled
4/20	at Maritime	—
4/23	at NYU-Poly	W 9-0
4/27	DREW	L 2-7
4/30	STEVENS	L 3-6

Coach: Stewart Cohen

1983-84 (2-9)

3/14	YESHIVA	L 1-8
3/24	at Seton Hall	L 2-7
3/31	at Saint Peter's	L 3-6
4/7	RUTGERS-NEWARK	L 2-7
4/11	MONTCLAIR STATE	L 0-8
4/18	MARITIME	L 8-1
4/21	NYU-POLY	W 7-2

4/25	at Drew	L 0-9
4/28	at Stevens	L 2-7
4/29	at Kean	L 2-7
5/2	RAMAPO	L 2-7

Coach: Stewart Cohen

1984-85 (5-5)

3/13	YESHIVA	3-3 (unfinished)
3/27	at Ramapo	L 1-8
3/30	at Saint Peter's	W 7-2
4/3	at Trenton State	L 1-8
4/10	at Montclair State	L 0-9
4/13	JERSEY CITY STATE	W 9-0
4/17	at Maritime	W 6-2
4/20	at NYU-Poly	W 9-0
4/24	SETON HALL	L 1-8
4/27	STEVENS	L 3-6
5/1	KEAN	W 8-1

Coach: Stewart Cohen

1985-86 (3-9)

3/12	YESHIVA	L 2-5
3/22	at Seton Hall	L 0-9
3/26	RAMAPO	L 1-8
3/29	SAINT PETER'S	W 8-1
4/2	TRENTON STATE	L 2-7
4/5	RUTGERS-NEWARK	L 0-9
4/9	MONTCLAIR STATE	L 2-6
4/12	at Jersey City State	W 7-2
4/19	NYU-POLY	W 8-1
4/27	at Stevens	L 4-5
4/30	at Kean	L 4-5
5/3	at Western Connecticut	L 4-5

Coach: Stewart Cohen

1986-87 (7-4)

3/11	at Yeshiva	W 6-3
3/21	SETON HALL	L 3-6
3/25	at Ramapo	W 6-3
3/28	at Saint Peter's	L 4-5
4/1	at Trenton State	L 0-9
4/8	at Montclair State	L 4-5
4/11	JERSEY CITY STATE	W 9-0
4/15	at NY Maritime	W 9-0
4/25	STEVENS	W 7-2
4/29	KEAN	W 9-0
5/2	WESTERN CONNETICUT	W 9-0

Coach: Stewart Cohen

2003-04 (6-7)

3/14	at Adelphi	L 2-3
3/27	STEVENS	L 4-5
3/28	MERCY	L 0-9

3/29	at Queens (NY)	L 0-9
4/2	at Ramapo	W 9-0
4/4	SOUTHAMPTON	W 9-0
4/16	at Kutztown	L 0-9
4/17	at Bloomsburg	L 0-9
4/19	at Philadelphia	L 3-6
4/20	USP	W 6-2
4/23	at Rutgers-Newark	W 4-3
4/24	at Southampton	W 7-2
4/25	CALDWELL	W 8-0

Coach: Phil Baboulis

2004-05 (5-10)

2/18	at Queens (NY)	L 0-9
2/19	EAST STROUDSBURG	W 6-3
2/26	BRYANT	L 3-6
3/5	PACE	L 3-6
3/12	DOWLING	L 1-8
3/16	at La Salle	L 2-4
3/19	KUTZTOWN	L 0-9
3/26	at Millersville	L 1-8
4/1	at St. Thomas Aquinas	W 7-2
4/2	PHILADELPHIA	L 2-7
4/9	at Caldwell	W 8-1
4/10	at Bloomsburg	L 0-9
4/13	at John Jay	
	(National Tennis Center)	W 9-0
4/16	at USP	L 4-5
4/18	ADELPHI	W 7-2

Coach: Phil Baboulis

2005-06 (8-10)

9/10	at Lafayette	L 0-9
9/14	WEST CHESTER	W 7-0
9/21	TEMPLE	L 0-7

9/22	at Philadelphia	W 6-3
2/4	Rhode Island	L 1-6
2/11	MERCY	postponed
2/18	EAST STROUDSBURG	W 6-3
2/26	FAIRLEIGH DICKINSON	L 0-7
3/3	at Queens (NY)	L 0-9
3/4	PACE	W 5-2
3/11	at Mesa State (Phoenix, AZ)	L 0-9
3/12	vs. Western New Mexico	
	(Phoenix, AZ)	L 0-6
3/18	ST. PETER'S	L 3-4
3/19	MERCY	L 0-7
3/25	PHILADELPHIA	W 4-3
3/26	MILLERSVILLE	postponed
4/2	at West Chester	cancelled
4/6	USP	W 6-3
4/11	CALDWELL	W 4-3
4/12	at Temple	cancelled
4/13	MILLERSVILLE	L 0-7
4/14	FDU-FLORHAM	postponed
4/15	at Kutztown	postponed
4/24	BLOOMFIELD	W 7-0

Coach: Phil Baboulis

2006-07 (10-10)

9/16	RIDER	W 4-3
9/23	RHODE ISLAND	L 0-7
9/30	FORDHAM	W 4-3
10/8	at Siena	L 1-6
10/21	SAINT FRANCIS (PA)	W 4-3
2/3	at Rhode Island	W 4-3
2/10	at Sacred Heart	W 7-0
2/16	at Rutgers	W 4-3
2/17	MONMOUTH	L 1-6



Arnaud Holl

Men's Year-by-Year Results

2/24	at Temple	L 2-5
2/28	at Saint Peter's	W 4-3
3/3	FAIRLEIGH DICKINSON	L 1-6
3/12	vs. Northern Illinois (Melbourne, FL)	L 0-7
3/13	vs. Florida Institute of Tech. (Melbourne, FL)	W 5-4
3/14	vs. Johns Hopkins (Melbourne, FL)	L 2-5
3/15	vs. Saint Louis (Melbourne, FL)	L 2-5
3/17	ST. FRANCIS (NY)	W 7-0
3/24	WAGNER	W 7-0
3/31	at Bucknell	L 1-6
4/1	at La Salle	postponed
4/10	at Hofstra	L 1-6
4/12	at La Salle	cancelled

Coach: Phil Baboulis
First year Division I

2007-08 (11-7)

9/15	at Rider	L 3-4
9/18	at Fordham	W 4-3
9/26	at Mount St. Mary's	W 4-2
9/29	SIENA	W 5-2
2/25	SACRED HEART	W 6-1
2/9	HOFSTRA	L 0-7
2/16	SAINT PETER'S	W 4-3
2/20	MORGAN STATE	W 4-3
2/23	HOWARD	W 6-1
2/24	at Army	L 0-7
3/1	HARTFORD	W 6-1
3/8	RHODE ISLAND	cancelled
3/15	ST. FRANCIS (NY)	W 6-1
3/18	vs. St. Thomas (FL) (at Florida Gulf Coast)	L 3-4
3/19	vs. Colgate (at Florida Gulf Coast)	L 0-7
3/20	vs. Stony Brook (at Florida Gulf Coast)	L 0-7
3/27	at Wagner	postponed
3/29	LA SALLE	W 4-3
4/3	at Wagner	W 7-0
4/4	BINGHAMTON	cancelled
4/6	at Monmouth	postponed

Coach: Phil Baboulis

2008-09 (11-6)

9/6	Fairfield/Sacred Heart Doubles Invitational	All Day
9/16	RIDER	W 7-0
9/20	ECAC Championships (at Trinity)	All Day
9/21	ECAC Championships (at Trinity)	All Day

10/4	Stony Brook 3-Way	L 1-4
10/4	at Stony Brook	W 4-1
10/4	vs. Saint Peter's	W 6-1
10/8	FORDHAM	W 6-1
10/10-12	Sergio Tacchini Collegiate Invitational	All Day
10/16	Wilson/ITA Northeast Regional	All Day
1/31	SACRED HEART	W 4-3
2/1	at Saint Peter's	L 3-4
2/14	HOWARD	W 4-3
2/21	at Hartford	W 7-0
2/28	MORGAN STATE	W 6-1
3/16	vs. Colgate (Fort Myers, FL)	L 2-5
3/18	vs. Florida Gulf Coast (Fort Myers, FL)	L 0-4
3/28	at Bucknell	L 1-6
3/29	WAGNER	postponed
3/31	at La Salle	W 6-1
4/4	at Bryant	W 4-3
4/5	at Boston University	W 5-2
4/9	at Marist	L 0-7
4/13	at Siena	W 7-0
4/15	at Monmouth	cancelled

Coach: Mike Sowter

2009-10 (18-7)

9/11-13	NJIT Invitational	All Day
9/23	at Fordham	W 5-2
10/2-4	Sergio Tacchini Collegiate Invitational	All Day
10/10-11	Stony Brook Invitational	All Day
10/16-18	ITA/Wilson Northeast Championships	All Day
1/30	vs. Sacred Heart (at Yale)	L 3-4
1/31	at Saint Peter's	W 5-2
2/6	BRYANT	W 6-1
2/7	at Hofstra	W 7-0
2/13	HOWARD	W 7-0
2/19-20	vs. Northern Kentucky (at Dayton)	W 7-0
2/20	vs. Belmont (at Dayton)	L 2-5
2/20	at Dayton	W 6-1
2/28	MONMOUTH	W 7-0
3/7	at Army	L 3-4
3/12	at Temple	L 1-6
3/16	at Florida Atlantic	L 0-7
3/17	at Florida Gulf Coast	W 4-3
3/28	at Saint Joseph's	W 5-2
3/28	at La Salle	W 6-0
4/5	at Fairfield	W 4-3
4/7	at Rider	W 7-0



Andres Alban

4/10	vs. Hartford (at Siena)	W 7-0
4/10	at Siena	W 6-1
4/11	at Stony Brook	L 2-5
Men's National Independent Tournament (at Longwood)		
4/15	vs. Seattle	W 4-1
4/15	vs. North Carolina Central	W 4-1
4/16	vs. Winston-Salem State	W 4-0
4/16	at Longwood	L 1-4

Coach: Mike Sowter

2010-11 (9-14)

9/17-19	Northeast Collegiate (at Brown)	All Day
9/21	RIDER	W 7-0
9/24-26	USTA National Tennis Center Men's College Invitational	All Day
10/8-10	Hampton Roads Collegiate Invitational	All Day
10/13	FORDHAM	W 6-1
10/14-19	Northeast USTA/ITA Division I Regional Championship	All Day
1/22	at Cornell	L 0-7
1/29	SACRED HEART	postponed
1/30	at Saint Peter's	postponed
2/6	MONMOUTH	postponed
2/12	at Fairfield	L 2-4

2/26	at Lafayette	L 3-4
2/27	at Princeton	L 0-7
3/2	SACRED HEART	postponed
3/4	at Army	L 2-5
3/5	MONMOUTH	L 3-4
3/12	NIAGARA	W 4-3
3/12	WAGNER	W 7-0
3/15	vs. Colgate (Orlando, FL)	W 4-3
3/16	vs. Liberty (Orlando, FL)	L 0-7
3/17	vs. Bucknell (Orlando, FL)	L 2-5
3/26	SAINT FRANCIS (PA)	W 5-0
3/26	HARTFORD	W 4-1
3/28	SACRED HEART	cancelled
4/2	at Hofstra	W 4-3
4/3	at Saint Joseph's	L 3-4
4/9	at Stony Brook	L 0-7
4/10	at La Salle	W 7-0
4/10	at Temple	L 0-7

Men's National Independent Tournament
(at Longwood)

4/15	vs. Seattle (at Longwood)	L 0-4
4/15	vs. North Carolina Central	L 3-4
4/16	at Longwood	L 0-4

Coach: Mike Sowter

2011-12 (13-9)

9/23-25	USTA National Tennis Center Invitational	
10/7-9	Hofstra Invitational	
10/13-16	Northeast USTA/ITA D1 Reg.Champ.	
10/16	at Rider	W 7-0
1/28	at Sacred Heart	W 7-0
1/29	SAINT PETER'S	W 7-0
2/4	MARIST	L 3-4
2/9	FORDHAM	L 3-4
2/18	VILLANOVA	W 5-2
2/22	WAGNER	W 6-1
2/24	MONMOUTH	W 7-0
2/25	LA SALLE	W 6-1
3/4	LAFAYETTE	W 6-1

Spring Break Trip (3.12-3.16)

3/12	vs. Valparaiso	L 3-4
3/13	vs. Liberty	L 2-5
	vs. Chicago State	W 5-2
3/15	vs. Bucknell	W 5-2
3/15	vs. Indiana	L 0-7
3/24	FAIRLEIGH DICKINSON	L 3-4
3/25	SAINT JOSEPH'S	L 3-4
3/31	HOFSTRA	W 5-2
4/1	at Hartford	W 7-0
4/4	at Army	L 1-6
4/10	at Stony Brook	L 1-6

Coach: Mike Sowter

2012-13 (16-6)

9/19	at Rider	W 6-1
9/28-30	Penn Invitational	All Day
10/5-7	Columbia Invitational	All Day
10/18-21	ITA Northeast Championships	All Day
1/26	SACRED HEART	W 7-0
1/27	at Saint Peter's	W 6-1
2/1	MONMOUTH	W 7-0
2/2	LA SALLE	W 6-1
2/9	at Lafayette	W 7-0
2/16	JAMES MADISON	L 2-5
2/22	ST. FRANCIS (NY)	W 7-0
2/23	at Army	L 3-4
3/1	at Niagara	W 5-2
3/2	at St. Bonaventure	W 6-1
3/3	at Buffalo	L 2-5
3/9	HOFSTRA	W 7-0
	Spring Break Trip -- Hilton Head Island, SC (3.19-21)	
3/19	vs. Nebraska at Omaha	W 7-0
3/20	at South Carolina State	W 5-2
3/21	vs. The Citadel	W 5-2
3/24	at Villanova	W 4-3
4/6	at Fairleigh Dickinson	W 4-3
4/7	at Saint Joseph's	W 5-2
4/13	at Marist	L 2-5
4/14	at Stony Brook	L 3-4
4/21	NORTHERN KENTUCKY	L 3-4

Coach: Mike Sowter

2013-14 (14-6)

9/20-22	USTA Billie Jean King NTC Men's College -- Flushing, NY	
9/25	at Rider	W 6-1
10/4-6	Columbia Classic -- New York	
10/19	2013 USTA/ITA Championships -- Cambridge, MA	
11/1	Winthrop Invitational -- Rock Hill, SC	
1/25	at Sacred Heart	W 6-1
1/26	SAINT PETER'S	W 7-0
1/31	FAIRFIELD	W 6-1
2/1	FAIRLEIGH DICKINSON	W 6-1
2/8	ASA COLLEGE	L 3-4
2/21	LA SALLE	W 7-0
2/23	at NYIT	L 4-5
2/28	BUFFALO	L 3-4
3/1	NEBRASKA	L 0-7
3/2	at Hofstra	W 7-0
3/8	ST. BONAVENTURE	W 7-0
3/20	at William & Mary	W 6-1
4/7	at Drexel	W 5-2
4/12	at Villanova	W 5-2
4/13	at Stony Brook	W 4-2
4/17	at Army	W 4-3

4/26	ABILENE CHRISTIAN	L 1-6
4/26	at Omaha	W 6-1
4/27	GRAND CANYON UNIV.	W 5-2

Coach: Mike Sowter

2014-15 (10-9)

9/5-6	Stony Brook Invitational	All Day
9/14	RIDER	cancelled
9/19-21	Princeton Invitational	All Day
9/27	ITA Men's All-American Championships	
10/16-20	ITA Northeast Championships	All Day
10/24-25	Army Invitational	All Day
1/30	at Fairfield	W, 7-0
2/7	FAIRLEIGH DICKINSON	W, 7-0
2/8	SACRED HEART	W, 6-1
	SAINT PETER'S	W, 6-1
2/11	at Penn	L, 1-6
2/18	YESHIVA (scrimmage)	
2/20	at Wofford	L, 2-5
2/21	vs. Appalachian State	L, 3-4
2/22	at Winthrop	L, 3-4
3/6	ST. FRANCIS BROOKLYN	W, 7-0
3/8	MONMOUTH	W, 4-3
3/13	NYIT	W, 4-3
3/14	at Drexel	W, 4-2
3/17	at UNC Charlotte	L, 0-7
3/18	at Presbyterian	L, 1-6
3/27	at St. John's	L, 1-6
4/4	SAINT JOSEPH'S	W, 6-1
4/5	at #49 Penn State	L, 0-7
4/9	at Stony Brook	cancelled
4/11	at Marist	cancelled
4/12	at Hofstra	W, 6-1
4/29	at Concordia	L, 1-8

Coach: Ira Miller

Records are incomplete. Please e-mail pillari@njit.edu with any additions or corrections.

Men's All-Time Roster

(1936-1939; 2001-02 to 2013-15)

A

ABREU, Diego 09, 10
ALBAN, Andres 13 14 15
 ALDER, Joe 02, 03, 04
 ALI, Monojir, Ali 02, 03
 ANAND, Arjun 05
 ARLT, Stephen 03, 04, 05, 06
 ARTUSSON, Erik 13 14
 ASSASSI, Youness 05
 ATHANS, Dimitri 07, 08, 09

B

BECICA, Charles 37, 38, 39
 BIGORNIA, Erik 02, 03, 04
 BHARGAVA, Pavan 03
 BROWN, Erik 02

C

CEDERQVIST, Martin 10
 CHINCHANKAR, Linesh 01
 CHIUJDEA, Cosmin 06, 07, 08, 09
 CHOU, Peter 03
 CHOWDHURY, Rafiqul 03, 04
 CHUA, Francis 01, 02, 03
CIMRMAN, Jan 15
 CROAD, Fraser 09, 10, 11, 12

D

DUKLESKI, Nikola 07

E

ERICKSON, Steve 06, 07, 08, 09

F

FEHN, Gil 37, 38, 39
 FEINMAN, Milton 37, 38, 39
 FELICH, Jack 12
 FERNANDES, Luis 02, 03
 FORRISTEL, Harry 38

G

GOLDSCHMITT, Ryan 01

H

HECKING 38
 HELLER, Herbert 37, 38, 39
 HENDRICKS, Robert 01
HOLL, Arnaud 14 15

I

IRANI, Kevin 06, 07

J

JEDLINSKI, Carl 14, 15

K

KAIC, Luka 15
 KALLOO, Marlon 01
 KEELAN, Bryan 08, 09, 10, 11
 KIRO, Ike 10, 11

L

LANG, Jonathan 07, 08
 LAWANDY, Mikel 05, 06
 LAWANDY, Ramy 05, 06, 07
 LONSKY, John 02
 LUNDQUIST, Carl 08, 09

M

MA, Andrew 01, 02, 03, 04
 MAMUTUK, Angelito 10 11
 MARTINEZ, Victor 11
 MEYER, Henry 38, 39

MORENO, Henrique 10
 MUNOZ, Adrian 05

N

NORREGAARD, Holger 12 13 14

O

OBEROI, Varun 02, 03, 04

P

PETERS, Rudy 37

R

RANGGA, Richard 15
 RICCOBONO, Thomas 03, 04
 RINCK 38, 39
 ROUSAR, Petr 10, 11, 12

S

SALOMON, Dan 08, 09, 10, 11
 SANTORO, John 01, 02
 SAYRE, Walter 38, 39
 SCHER, Marv 37
SCHULTZ, Markus 13 14 15
 SMITH, Lou 38, 39
 SULLIVAN, Mike 07, 08

T

TASCA, Joao 10, 11
 TRIVEDI, Ronak 03, 04
 TUNNERO, Anthony 07, 08, 09

V

VERMA, Siddharth 07

W

WANG, Roger 05
 WEIMAN, Tim 06, 07
 WENTZEL, Damian 03, 04, 05, 06

Z

ZYTKO, Doug 07

*Note: Only first year of school year is listed;
 i.e., 94 = 1994-95 school year.*

Bold current players

Records are incomplete. Please e-mail pillari@njit.edu
 with any additions or corrections.



Markus Schultz

Women's All-Time Roster

(First season 1982-83 to 2013-15)

A

ADE, Dianne 84
AHMED, Fouzia 03
AIZIER, Fanny 06, 07, 08, 09
ALCALDE, Andre 05
APPLEBY, Emma 02, 03
ASLAM, Sadia 02

B

BABNZATEGIER, Sonia 87
BAHNKEN, Kerri 91,92
BALANZAYEGUI, Sonia 89,90
BALLOU, Nicole 00, 01
BARNES, Tiffany 15
BERKERY, Gayle 84,85,86
BLAKE, Barbara 86
BOGDAN, Grace 05, 06, 07
BYAN, Jisu 94

C

CAKIROGLU, Didem 06, 07
CHEE, Julia 02
CHESWICK, Jennifer 98,99
CORKY, Sheryl 85,86

D

DALLALAH, Suzanne 90
DiVERRES, Sonia 02, 03
DeROSA, Katie 09
De JESUS, Christine 97,98,99
DOCI, Iulia 05, 06, 07, 08
DZIKOWSKI, Caitlin 02, 03

F

FERNANDEZ, Wennie 87
FOSTER, Taikya 02
FREELAND, Michele 83,84,85,86
FUSCO, Lisa 87,88,89,90

G

GASCARD, Lorelei 83,84
GOLDRICK, Liz 89
GONZALEZ, Judy 90
GRAFF, Monika 10 11 12
GRIFFITHS, Nadia 96
GUIDERA, Cristine 92
GUIDRY, Megan 10 11 12 13
GUPTA, Amita 96,97,98,99
GUPTA, Angela 94
GYI, Khin 93,94

H

HABEICHE, Nicole 99
HABEGGER, Nathalie 15
HENRY, Francille 89,90,91,92
HENRY, Marine 06
HERNANDEZ, Andy 88
HERNANDEZ, Esperanza 84,85
HOFFMAN, Kendra 88
HOMAN, Karen 91,92
HOWE, Rebecca 96,98,99

K

KAMARA, Mayeana 03
KASEM, Fatima 05, 06, 07
KIM, Joo 86,87
KIMBLE, Debra 90,91,92
KOIKE, Chiori 05, 06, 07
KUZMENKO, Ksenia 10 11 12 13

L

LEE, Jeannie 91,92,93,94
LIDON, Ana 08, 09, 10
LI, Miao 02, 03
LIN, Jenny 92,93,94
LOVDAL, Anine 08, 09
LUSTE, Jana 10 11 12 13

M

MacDONALD, Hannelore 10 11 12 13
MADAMBA, Kim 00, 01, 02, 03
MARTINEZ, Dolores 01, 02, 03, 04
MARTINEZ, Gina 93,94,96,97
MAYEVSKA, Nina 09, 10 11

MAZANEK, Melissa 03
MELIBEU, Natalia 12 13
MELUCCI, Michelle 99
MITCHELL, Crystal 03
MOSELEY, Jennifer 96
MOYA, Griselda 86,87,88
MOYA, Virginia 98,99,00
MUCHA, Mary Ann 83,84
MULDON, Kristi 93,94
MURRY, Jean 86

N

NACIRI, Nisrine 02, 03
NOWAK, Sydney 15

O

O'CONNOR, Jackie 00
O'MEARA, Teresa 88,89
OSEN, Risikatu 96,97,98

P

PATRAS, Alice 83,84
PASZKOWSKI, Lisa 87,88
PAWLEKOWSKI, Nancy 84
PROFITA, Joan 83,84

R

RAMIREZ, Maria 92
RAYMOND, Veronica 92
REAGO, Susan 96,97,98
RIBELIN, Nettie 00
RIVERA, Marisol 86,87,88,90
ROESSNER, Chrissa 00, 01

RODISON, Kim 88
RODRIQUEZ, Derys 93,94,96,97
RODRIQUEZ, Natalie 97,98,99
ROJAS, Kathleen 92
ROSAS GARCIA, Alba 15

S

SALERNO, Eva 05
SANJAI, Deepti 02, 03, 04, 05
SAMRA, Omnia 91,92
SCHNEIDER, Andrea 85
SCHWIER, Allison 86,87,88,89
SEVILLA, Eileen 88,89,92
SIMCHICK, Sharyn 89,98,91,92
SOLORZANO, Denise 02, 03, 04, 05
SOLORZANO, Rebecca 03, 04, 05
STANIMIROVIC, Dasa 07, 08, 09
STROMAN, Kartika 87,88,89,90
SWEENEY, Megan 83,84,85

T

TASOVAC, Natalija 15
TOOR, Isha 06, 07, 08, 09
TORRES, Debra 90
TRIPCOVICI, Martina 10 11 12 13

V

VAN BLACRCOM, Jennifer 88,89

W

WALDBURG, Stacy 02
WANG, Yi-Ren 87
WHEELER, Terri 83
WORLEY, Sanjeanetta 87,88,90

Z

ZANOTTA, Carolina 12 13 14 15
ZOE, Adrienne 84,85

Note: Only first year of school year is listed; i.e., 94 = 1994-95 school year.

Bold current players

Records are incomplete. Please e-mail pillari@njit.edu with any additions or corrections.



Nathalie Habegger

Women's Year-by-Year Results

1983-84 (0-2)

9/14	at Stevens	cancelled
9/28	at St. Elizabeth	L 2-7
10/19	at Rutgers-Newark	L 0-9

Coach: Duane Felczak

1984-85 (4-2)

9/15	STEVENS	L 2-7
9/26	at Rutgers-Newark	L 0-9
10/3	NY MARITIME	W 7-2
10/10	BARUCH	W 7-2
10/17	ST. ELIZABETH	W 5-4
10/20	at Ramapo	W 8-1

Coach: Duane Felczak

1985-86 (0-8)

9/21	WESTERN CONN. STATE	L 3-5
9/25	at Stevens	L 2-7
10/2	at NY Maritime	L 2-6
10/9	at Upsala	L 3-6
10/18	RAMAPO	L 3-6
10/19	at Centenary	L 3-6
10/20	YESHIVA	L 2-7
10/26	STEVENS	L 2-6

Coach: Duane Felczak

1986-87 (3-5)

9/17	YESHIVA	L 0-9
9/20	at Western Connecticut	L 1-8
9/24	STEVENS	L 1-8
10/1	MARITIME	L 4-5
10/4	C.S.E	W 5-4
10/8	UPSALA	W 6-3
10/17	at Ramapo	L 0-9
10/18	CENTENARY	W 9-0 (default)

Coach: Robert Moran

2003-04 (7-7)

9/14	at Concordia (NY)	W 6-3
9/17	CALDWELL	W 5-4
9/20	GEORGIA COURT	L 3-6
9/27	CONCORDIA (NY)	W 6-3
10/4	USP	W 5-4
10/11	GREEN MOUNTAIN	W 5-4
2/21	EAST STROUDSBURG	L 2-7
3/6	NYU	L 0-9
3/21	at Georgian Court	W 6-3
3/27	at Drew	W 6-3
4/7	at Richard Stockton	L 2-7
4/15	at Queens (NY)	L 0-9
4/16	at Kutztown	L 1-7
4/17	at Bloomsburg	L 0-9

Coach: Phil Baboulis

2004-05 (10-9)

9/7	HOLY FAMILY	W 6-3
9/10	at Bryant	L 0-9
9/11	vs. Bentley (at Bryant)	W 6-3
10/2	CALIFORNIA (PA)	W 5-4
10/5	GEORGIAN COURT	W 9-0
2/19	EAST STROUDSBURG	W 6-3
2/26	BRYANT	L 2-7
3/5	PACE	W 8-1
3/16	at La Salle	L 2-4
3/19	KUTZTOWN	L 1-8
3/26	at Millersville	L 1-8
3/31	at Rutgers-Newark	W 8-1
4/2	PHILADELPHIA	W 5-4
4/6	MONTCLAIR STATE	W 8-1
4/8	QUEENS (NY)	L 1-8
4/9	at Georgian Court	W 8-1
4/10	at Bloomsburg	L 1-8
4/20	at Queens (NY)	L 1-8
5/6	Regional Tournament	L 0-5

Coach: Phil Baboulis

2005-06 (18-5)

9/2	CLARION	L 1-6
9/7	USP	W 5-2
9/10	LAFAYETTE	L 3-4
9/13	at Holy Family	W 9-0
9/14	at West Chester	W 6-1
9/21	GEORGIAN COURT	W 6-1
9/28	at Caldwell	W 7-2
10/1	at Philadelphia	W 5-4
10/4	GOLDEY-BEACOM	W 7-0
2/16	at Temple	L 3-4
2/18	EAST STROUDSBURG	W 9-0
2/25	SETON HALL	L 7-0
2/26	FAIRLEIGH DICKINSON	W 7-0
3/4	PACE	W 6-1
3/5	WALSH	W 6-1
3/11	vs. Mesa State (Phoenix, AZ)	W 7-2
3/12	vs. Western New Mexico (Phoenix, AZ)	W 5-2
3/13	vs. Northern Arizona (Sedona, AZ)	cx
3/18	ST. PETER'S	W 7-0
3/25	CONCORDIA (NY)	W 6-1
4/1	at Bloomsburg	L 3-6
4/6	MILLERSVILLE	W 7-0
4/8	at Georgian Court	cancelled
4/9	at Philadelphia	W 5-4
4/12	at Queens (NY)	W 5-4
4/15	at Kutztown	postponed

Coach: Phil Baboulis



Ines Vujkovic

2006-07 (14-8)

9/16	RIDER	W 5-2
9/23-24	Rhode Island Invitational	3rd place
9/30	CONCORDIA (NY)	postponed
10/3	CONCORDIA (NY)	W 5-2
10/6	SETON HALL	L 1-6
10/14	at Fordham	L 0-7
10/21	SAINT FRANCIS (PA)	W 5-2
2/2	at St. Peter's	W 7-0
2/10	LIU	W 6-1
2/17	TEMPLE	L 1-6
2/23	at Binghamton	postponed
2/24	FAIRFIELD	W 5-2
3/3	FAIRLEIGH DICKINSON	W 4-3
3/12	at Florida Atlantic	L 0-7
3/13	at Florida Institute of Technology	L 4-5
3/14	vs. Johns Hopkins (Melbourne, FL)	W 5-2
3/15	vs. Saint Louis (Lakeland, FL)	L 1-5
3/17	SACRED HEART	W 5-2
3/24	WAGNER	W 7-0
3/29	at Binghamton	L 2-5
3/31	at Bucknell	W 5-2
4/1	RHODE ISLAND	L 1-4
4/3	MANHATTAN	W 6-1
4/10	at Hofstra	W 6-1
4/11	at Monmouth	W 7-0

Coach: Phil Baboulis

First year Division I

2007-08 (12-8)

9/15	at Rider	W 6-1
9/24	MONMOUTH	W 6-1
9/26	at Mt. St. Mary's	W 4-3
10/5-7	Bucknell Invitational	
1/30	at Princeton	L 0-7
2/1	at Army	L 3-4
2/2	SACRED HEART	W 6-1
2/9	HOFSTRA	W 4-3
2/16	ST. PETER'S	W 6-1
2/20	MORGAN STATE	W 5-2
2/23	BINGHAMTON	L 2-5
3/1	HARTFORD	W 7-0
3/8	MANHATTAN	W 6-1
3/15	ST. FRANCIS (NY)	W 7-0
3/18	vs. St. Thomas (FL)	
	(Miami Gardens, FL)	W 5-1
3/19	vs. Colgate (at Florida Gulf Coast)	L 3-4
3/20	vs. Coastal Carolina	
	(at Florida Gulf Coast)	L 1-6
3/26	at Wagner	W 7-0
3/30	at St. John's	L 3-4
4/3	FORDHAM	L 1-4
4/6	at Rhode Island	L 2-5
4/12	vs. LIU (at National Tennis Center)	ppd

Coach: Phil Baboulis

2008-09 (11-9)

9/7	Fairfield/Sacred Heart Doubles	
	Invitational	
9/12-14	Hofstra Invitational	
	Seton Hall, Radford, Hofstra, St. Peter's,	
	Manhattan Fairfield, Sacred Heart	
9/16	RIDER	W 5-2
10/4	Stony Brook 3-Way	
	vs. Saint Peter's	W 4-1
	at Stony Brook	L 1-4
10/7	at Monmouth	W 5-2
	Hampton Roads Collegiate Invitational	
10/10-12	Sergio Tacchini Collegiate	
	Invitational	All Day
10/24	Wilson/ITA East Regional	All Day
1/31	SACRED HEART	W 6-1
2/1	at Saint Peter's	W 7-0
2/14	HOWARD	W 6-1
2/20	at Princeton	L 0-7
2/21	at Hartford	W 7-0
2/28	MORGAN STATE	W 7-0
3/1	at Army	L 1-6
3/7	at Albany	cancelled
	Spring Break Trip	
3/16	vs. Colgate (Fort Myers, FL)	W 6-1
3/17	vs. Florida Gulf Coast	
	(Fort Myers, FL)	L 0-6
3/28	at Bucknell	L 0-7
3/29	WAGNER	postponed
4/1	LA SALLE (Senior Day)	
	W 4-0	
4/4	at Bryant	W 6-1

4/6	at Manhattan	cancelled
	Independent Tennis Tournament	
4/17	Chicago State (at UTPA)	L 0-4
4/17	Texas-Pan American	L 1-4
4/18	Longwood (at UTPA)	L 1-4
4/19	Seattle (at UTPA)	L 2-4

Coach: Mike Sowter

2009-10 (14-11)

9/11-13	NJIT Invitational	
9/25-27	Eastern Collegiates	
10/2-4	Sergio Tacchini Collegiate	
	Invitational	
10/24-25	ITA/Wilson East Regionals	
1/30	vs. Sacred Heart (at Yale)	L 3-4
1/31	at Saint Peter's	W 6-1
2/6	BRYANT	W 6-1
2/7	at Hofstra	W 4-2
2/13	HOWARD	L 3-4
2/19-20	vs. Robert Morris (at Dayton)	W 5-2
2/19	vs. Lipscomb (at Dayton)	W 4-3
2/20	at Dayton	W 5-2
3/6	vs. Providence (at Army)	L 3-4
3/7	at Army	L 1-6
3/7	vs. Marist (at Army)	L 3-4
3/15	vs. Columbia (at Florida Atlantic)	L 0-7
3/16	at Florida Atlantic	L 0-7
3/20	SETON HALL	W 4-3
3/27	UMASS	L 1-6
3/28	at Saint Joseph's	W 6-1
4/5	MANHATTAN	W 5-2
4/10	vs. Hartford (at Siena)	W 6-1
4/10	at Siena	W 6-1
4/11	at Stony Brook	L 0-7
4/17	at Rider	W 6-1
4/18	ALBANY	W 4-3
	Great West Conference Tournament (at North Dakota)	
5/1	#3 at North Dakota	L 3-4
5/1	#5 vs. South Dakota	W 4-1
5/2	#1 vs. Chicago State	L 0-4

Coach: Mike Sowter

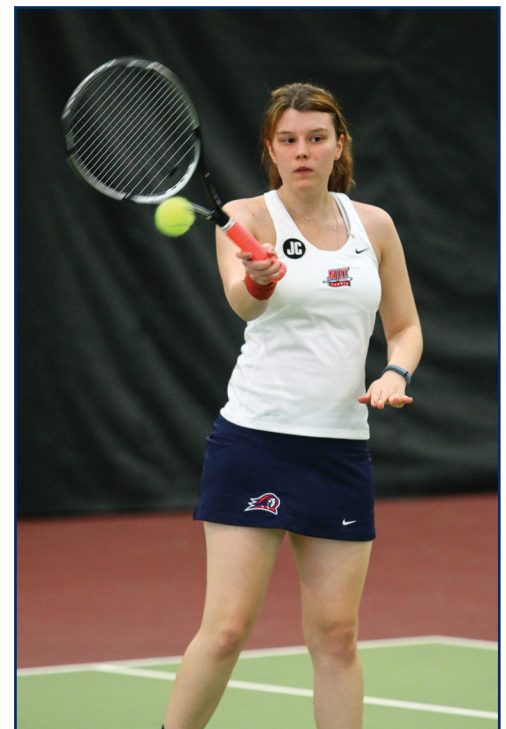
2010-11 (17-8)

9/15	at Fordham	W 4-3
9/17-19	Stony Brook Invitational	
9/24-26	Eastern Collegiates (at Army)	
9/28	RIDER	postponed
10/8-10	Hampton Roads Collegiate	
	Invitational	
10/22-26	Northeast Wilson/ITA	
	Division I Regional	
	Championship (at Dartmouth)	
1/29	SACRED HEART	postponed
1/30	at Saint Peter's	postponed
2/5	at UMass	postponed
2/6	at UMass	L 1-6
2/12	at Fairfield	W 5-2
2/13	at Albany	W 6-1
2/18-20	Princeton (ECAC Indoor	

	Championships)	L 0-7
2/19	Dartmouth (ECAC Indoor	
	Championships)	L 0-7
2/20	Cornell (ECAC Indoor	
	Championships)	L 0-3
2/26	at Lafayette	W 6-1
3/5	at Army	L 1-6
3/6	Providence (at Army)	W 7-0
3/15	North Dakota (Orlando, FL)	L 2-5
3/16	Liberty (Orlando, FL)	L 1-6
3/17	Florida A&M (Orlando, FL)	W 6-1
3/26	SAINT FRANCIS (PA)	W 5-0
3/26	HARTFORD	W 5-0
3/29	at St. Joseph's	W 6-1
4/2	at Hofstra	W 6-1
4/6	MANHATTAN	W 6-1
4/9	at Stony Brook	L 1-6
4/10	SACRED HEART	W 7-0
4/21	SETON HALL	W 7-0
4/23	QUEENS (NY)	W 7-0
	Great West Conference Tournament	
	(at Chicago State)	
4/30	#5 Chicago State	W 4-0
4/30	#1 Seattle	W 4-0
5/1	#3 North Dakota	W 4-2

(NJIT wins Great West Conference Tournament; first Division I team conference championship for NJIT in any sport; Division I competition began in 2006-07; championship-eligible in Division I in 2009-10).

Coach: Mike Sowter



Tiffany Barnes

Women's Year-by-Year Results

2011-12 (21-3)

9/16-18	Cornell Invitational	
10/5	at Fordham	L 2-5
10/7-9	Hofstra Invitational	
10/20-23	Northeast Wilson/ITA D1 Reg. Champ.	
1/28	at Sacred Heart	W 6-1
1/29	SAINT PETER'S	W 7-0
2/3	MANHATTAN	W 7-0
2/4	LONG ISLAND	W 6-1
2/11	at Akron	L 1-6
2/12	at Pittsburgh	W 4-3
2/17	RHODE ISLAND	W 7-0
2/18	VILLANOVA	W 6-1
2/25	LA SALLE	W 7-0
3/4	LAFAYETTE	W 6-1
3/9	SETON HALL	W 6-1
Spring Break (3.12-3.15 — Orlando, FL)		
3/12	vs. North Dakota	W 6-1
3/13	vs. Southern Illinois	W 4-3
	vs. Chicago State	W 7-0
3/15	vs. Bucknell	W 6-1
3/25	SAINT JOSEPH'S	W 7-0
3/30	at Army	W 4-3
3/31	HOFSTRA	W 7-0
4/1	at Hartford	W 7-0
4/10	at Stony Brook	L 3-4
4/14	at Queens (NY)	W 6-1
Great West Conference Tournament (at Texas-Pan American)		
4/21	vs. #5 Chicago State	W 4-0
4/22	vs. #2 Seattle	W 4-1
(NJIT wins Great West Conference Tournament for the second consecutive year)		
Coach: Mike Sowter		

2012-13 (15-6)

9/28-30	NJIT Women's Tennis Invitational	All Day
10/6-8	USTA Invitational	All Day
10/19-22	ITA Northeast Championships	All Day
11/9-11	Harvard Invitational	All Day
1/26	SACRED HEART	W 6-1
1/27	SAINT PETER'S	W 7-0
2/2	FORDHAM	W 6-1
2/3	at Dartmouth	L 1-6
2/15	SETON HALL	W 6-1
2/16	RHODE ISLAND	W 7-0
2/23	AKRON	L 2-5
3/2	at St. Bonaventure	W 6-1
3/3	at Buffalo	L 1-6
3/9	HOFSTRA	W 6-1
3/9	MANHATTAN	W 7-0
3/15	at Harvard	L 0-7
Spring Break — Hilton Head Island, SC (3.19-3.21)		
3/19	vs. Nebraska at Omaha	W 7-0
3/20	vs. #68 Kansas	L 1-4
3/21	vs. #64 Cornell	L 1-6
3/24	at Villanova	W 6-1
4/7	at Saint Joseph's	W 6-1

4/14	at Stony Brook	cancelled
4/17	at Army	W 5-2
National Invitation Tennis Tournament (hosted by NJIT; at Thomas Edison Park)		
4/20	vs. Chicago State	W 7-0
4/20	vs. Northern Kentucky	W 7-0
4/21	vs. Texas-Pan American	W 4-1
Coach: Mike Sowter		

2013-14 (11-8)

10/4	Warhawk/Panther Invitational -- Whitewater, WI	
10/11	USTA Women's College Invitational -- Billie Jean King National Tennis Center	
10/18	2013 USTA/ITA Regional Championships -- Cambridge, MA	
10/26	NJIT Women's Tennis Invitational -- Newark, NJ	
1/25	at Sacred Heart	W 4-3
1/26	SAINT PETER'S	W 7-0
2/1	FAIRLEIGH DICKINSON	L 2-5
2/9	FORDHAM	L 3-4
2/15	SETON HALL	L 3-4
2/28	at Army	L 2-5
3/2	at Hofstra	W 6-1
3/8	BINGHAMTON	L 3-4
3/9	ST. BONAVENTURE	W 5-2
3/20	vs. Norfolk State	W 5-2
3/29	MARIST W	7-0
4/4	MANHATTAN	W 7-0
4/6	at Drexel	L 3-4

2014-15 (3-17)

9/26-27	Army Invitational	All Day
10/3-5	USTA Invitational	All Day
10/16-20	ITA Northeast Championships	All Day
10/24-25	NJIT INVITATIONAL	All Day
1/24-25	NJIT WINTER INVITATIONAL	All Day
1/31	LIU BROOKLYN	L, 1-6
2/1	at UMBC	L, 2-5
2/6	at Akron	L, 0-7
2/7	vs. Liberty (at Akron)	L, 0-7
2/8	at Youngstown State	L, 2-5
2/15	SACRED HEART	L, 1-6
	SAINT PETER'S	W, 6-1
2/20	at Rutgers	L, 0-7
2/27	SETON HALL	L, 1-6
3/8	FAIRLEIGH DICKINSON	W, 4-3
3/14	at Drexel	L, 0-5
3/17	at UNC Charlotte	L, 0-7
3/18	at UNC Asheville	L, 1-6
3/19	at Presbyterian	rained out
3/28	STONY BROOK	L, 0-7
3/29	RHODE ISLAND	cancelled
4/8	at St. John's	cancelled
4/11	at Marist	W, 4-3
4/12	at Hofstra	L, 0-7
4/14	at St. John's	L, 0-7
4/18	at UAlbany	L, 1-6
4/19	at Binghamton	L, 0-7
America East Championships		
4/24	at Binghamton	L, 0-4
Coach: Ira Miller		



Natalija Tasovac

Records are incomplete. Please e-mail pillari@njit.edu with any additions or corrections.

NJIT Hall of Fame

Name	Grad. Year	Contribution	Sport (s)	Years Active	Year of Induction	Name	Grad. Year	Contribution	Sport (s)	Years Active	Year of Induction
BAKUN, Andrew I.	1982	Athlete/Asst. Coach	M-Soccer	1978-81/ 90-91	2005	IRIS, Herb	1951	Benefactor	--	--	2007
BAKUN, Myron	1967	Athlete	M-Soccer	1964-66	1991	KAMINSKY, Nicholas J.	1978	Athlete	Baseball	1975-78	2006
BARTH, Roland E.	1960	Athlete	M-Fencing	1957-59	2009	KASBARIAN, Raymond P.	1966	Founder/Athlete	Judo	1962-66	1989
			M-Soccer	1956-59		KETZNER, Robert Shelby	--	Coach	Rifle	1962-86	1987
BAUDER, Fred "Coach"	--	Coach	M-Basketball	1932-61	1989	KHOWAYLO, Alex	1969	Athlete	M-Soccer	1960-63	1996
BLUM, Raymond E.	1950	Distinguished Alumnus	Speedskating/ Cycling	--	1996	LUBETKIN, Charles "Tudy"	1953	Athlete	M-Basketball/ M-Track	1949-52	1994
BORJA, Hernan "Chico"	1981	Athlete	M-Soccer	1977-80	1986	LYNCH, Robert K.	1984	Athlete/Coach	M-Fencing	1977-80/ 86-91	1993
BORNAKO, Gregory "Egor"	1970	Athlete	M-Fencing	1966-70	1987	MacDONALD, Dan	1984	Athlete	Baseball	1981-84	1992
BOWSER, Hamilton V.	1952	Athlete	M-Fencing	1948-52	1989	OLSEN, Richard J.	1969	Athlete	M-Basketball	1965-69	1988
BRADLEY, Thomas	1978	Athlete	M-Swimming	1974-78	1990	OLSON, George R.	1977	Athlete	Baseball	1974-77	1987
BROWN, Andrew D.	1963	Athlete	M-Soccer	1956-59	2006	PAULIUS, Raymond V.	1985	Athlete	M-Soccer	1980-83	2006
CRIMMINS, David	1952	Athlete	M-Fencing	1948-52	2007	RODGERS, Tarik	1996	Athlete	M-Volleyball	1992-95	2010
CRUZ, Edward	1963	Athlete	M-Soccer	1959-62	1995	ROGERS, Warren	1988	Athlete	M-Basketball	1983-87	1993
DAWSON, Marilyn E.	1986	Athlete	WVB/WBKB/SB	1982-86	1991	ROMULUS, Rudy	1991	Athlete	M-Volleyball	1988-91	1996
DeNICOLA, Carmine P.	1978	Athlete	Baseball	1975-78	2005	ROSS, Jonathan A.	1956	Athlete	M-Soccer	1953-55	2010
DeNURE, Dave	--	Coach	M-Volleyball	1982-98	2009	SARLO, Paul A.	1992	Athlete	Baseball	1989-91	2005
			W-Volleyball	1986-90		SCHMID, John "Gene"	--	Asst Coach/Coach	Baseball	1968-72/ 73-97	2002
			W-Basketball	1987-88							
DeVITO, Louis	1960	Athlete	M-Soccer/ M-Fencing	1956-60	1992	SIMON, J. Malcolm	--	Coach Director of Athletics	M-Soccer --	1955-83 1983-94	1994
DIAS, Joe A.	1977	Athlete	M-Soccer	1973-76	1993	SKURLA, Peter J.	1941	Athlete	Bowling	1937-41	1992
DRURY, Eugene M.	1963	Athlete	M-Tennis	1960-63	1988	SORIANO, Gregory	1975	Athlete	M-Fencing	1968-72	2010
ENG, Katherine	1993	Athlete	W-Volleyball	1989-92	2007	SWANSON, Robert F.	--	Director of Athletics	--	1947-82	1986
ETIENNE, Yves	1979	Athlete	M-Volleyball	1976-78	1990	TAETZSCH, Robert	1952	Athlete	M-Fencing	1948-52	2007
FEHN, Gilbert F.	1940	Athlete	M-Basketball/ M-Tennis	1936-40	1992	TAETZSCH, William	1952	Athlete	M-Fencing	1948-52	2007
						TOSATO, Lawrence P.	1956	Athlete	M-Basketball/ Baseball	1952-56	1987
FITZGERALD, Joseph M.	--	Coach/Asst. Coach	M-Basketball	1961-66/ 52-61	1986	TUBELLO, Jeffrey	1976	Athlete	Rifle	1972-76	1988
FLEISHER, Seymour "Zoom"	1951	Athlete	M-Basketball	1947-51	1992	VAN WRIGHT, Nevea	1997	Athlete	W-Basketball	1991-96	2005
GAGLIARDO, Salvatore A.	1985	Athlete	M-Basketball	1981-85	1995	WALSH, John J.	1966	Athlete	MSoc/MBKB/ Baseball	1962-66	1986
GALLAGHER, Thomas G.	1985	Athlete	M-Basketball	1981-85	1991						
GIOVANNOLI, Arnold L.	1953	Athlete	M-Basketball	1950-53	1993	WASNIEWSKI, Frank	1980	Athlete	M-Tennis	1977-80	1990
GOLDRICK PITT, Elizabeth M.	1990	Athlete	W-Volleyball/ Softball/WBKB/WTen	1985-90	1995	WELGOS, Bob	1962	Athlete	M-Basketball/ Bowling	1959-62	2005
GRAZIANO, Jean M.	1989	Athlete	Softball	1986-89	2009	WOROBEC, Myron S.	1966	Athlete	M-Soccer	1962-65	1994
GRUENEWALD, Wendy A.	1997	Athlete	WBKB/Softball/ W-Volleyball/W-Soccer	1992-96	2003	YONEZUKA, Yoshishada	--	Founder/Coach	Judo	1962-?	1991
						ZORN, Werner	1962	Athlete	M-Soccer	1958-61	1988
HAASE, Jay W.	1975	Athlete	M-Fencing	1971-75	1988						
HAMMOND, Kenneth W.	1979	Athlete	M-Soccer	1974-77	2003	Teams	Year	Accomplishments		Year of Induction	
HANDWERKER, Andy	1963	Athlete	M-Soccer	1959-62	2002	Men's Soccer	1960	NAIA co-National Champion		1988	
HAUSSER, Paul C.	--	Administrator	--	1953-91	1990	Men's Basketball	1981-82	NJIT's first ECAC and IAC champion		1990	
		Coach	Fencing/Baseball	1954-88/53-72		Baseball	1982	NJIT's second ECAC and IAC champion		1993	
HUBEY, Ali	1972	Athlete	M-Soccer	1968-71	1990						
HURTADO, Fabian	1975	Athlete	M-Soccer	1970-74	1987						

Directions

FOR GPS USERS

The address for Lubetkin Field at Mal Simon Stadium, the Estelle and Zoom Fleisher Athletic Center, and the Naimoli Family Athletic and Recreational Facility is 80 Lock Street, Newark, NJ, 07102.

BY CAR

New Jersey Turnpike: Driving North from South Jersey: Take NJ Turnpike to Exit 13A Newark Airport. After toll stay to left and follow signs to Rt. 1 & 9 North. You will merge onto Rt. 1 & 9 North. Airport will be on right. Follow signs for downtown Newark and Rt. 21 North-(left lane exit ramp). Downtown Newark will be in front of you. NYC will be off to your right. Follow Rt. 21North (McCarter Highway). Turn left on Raymond Blvd. Follow Raymond Blvd. past Warren Street traffic light and Fleisher Athletic Center, Naimoli Center, and Lubetkin Field at Mal Simon Stadium will be to your right (one soccer goal line runs along Warren Street and the soccer sideline parallels Lock Street).

New Jersey Turnpike: Driving South from North Jersey: Take exit 15W to Route 280 West, then follow Route 280 West directions.

Route 280 West: After drawbridge, take Exit 15A (Rt. 21 South - McCarter Highway). Follow Rt. 21 South to Raymond Blvd. Turn right on Raymond Blvd. Follow Raymond Blvd. pass Warren Street traffic light and Fleisher Athletic Center, Naimoli Center, and Lubetkin Field at Mal Simon Stadium will be to your right (one soccer goal line runs along Warren Street and the soccer sideline parallels Lock Street).

Route 280 East: Take Exit 15 (Rt. 21 South - McCarter Highway). Follow Rt. 21 South to Raymond Blvd. Turn right on Raymond Blvd. Follow Raymond Blvd. past Warren Street traffic light and Fleisher Athletic Center, Naimoli Center, and Lubetkin Field at Mal Simon Stadium will be to your right (one soccer goal line runs along Warren Street and the soccer sideline parallels Lock Street).

Garden State Parkway (North & South bound): Take exit 145 to Route 280 East, then follow Route 280 East directions.

Route 1 & 9 North & South: Take exit marked Newark, Rt. 21 North (McCarter Highway). Follow Rt. 21 North (McCarter Highway). Turn left on Raymond Blvd. Follow Raymond Blvd. past Warren Street traffic light and Fleisher Athletic Center, Naimoli Center, and Lubetkin Field at Mal Simon Stadium will be to your right (one soccer goal line runs along Warren Street and the soccer sideline parallels Lock Street).

Route 78 East: Take Route 78 East to Rt. 21 North. Turn left on Raymond Blvd. Follow Raymond Blvd. past Warren Street traffic light and Fleisher Athletic Center, Naimoli Center, and Lubetkin Field at Mal Simon Stadium will be to your right (one soccer goal line runs along Warren Street and the soccer sideline parallels Lock Street).

Route 22 East: Take Route 22 East to Route 21 North. Turn left on Raymond Blvd. Follow Raymond Blvd. past Warren Street traffic light and Fleisher Athletic Center, Naimoli Center, and Lubetkin Field at Mal Simon Stadium will be to your right (one soccer goal line runs along Warren Street and the soccer sideline parallels Lock Street).



Route 21 North: Follow Rt. 21 North to Raymond Blvd. Turn left onto Raymond Blvd. Follow Raymond Blvd. past Warren Street traffic light and Fleisher Athletic Center, Naimoli Center, and Lubetkin Field at Mal Simon Stadium will be to your right (one soccer goal line runs along Warren Street and the soccer sideline parallels Lock Street).

Route 21 South: Follow Rt. 21 South (McCarter Highway) to Raymond Blvd. Turn Right on Raymond Blvd. Follow Raymond Blvd. past Warren Street traffic light and Fleisher Athletic Center, Naimoli Center, and Lubetkin Field at Mal Simon Stadium will be to your right (one soccer goal line runs along Warren Street and the soccer sideline parallels Lock Street).

New York Thruway: Thruway to Exit 14A, Garden State Parkway. Follow Garden State Parkway directions above.

George Washington Bridge: NJ Turnpike South to Exit 15W. Follow Route 280 West directions above.

Lincoln Tunnel: West on Rt. 3 to Rt. 21 South. Turn right onto Raymond Blvd. Follow Raymond Blvd. past Warren Street traffic light and Fleisher Athletic Center, Naimoli Center, and Lubetkin Field at Mal Simon Stadium will be to your right (one soccer goal line runs along Warren Street and the soccer sideline parallels Lock Street).

From Brooklyn, Queens and Long Island: Take Verrazano-Narrows Bridge (Interstate 278) and follow 278 across Staten Island. Cross Goethels Bridge. Follow signs to New Jersey Turnpike North then follow New Jersey Turnpike directions above.

PARKING

Bus/Van Parking: Visiting buses and vans may usually park on Lock Street adjacent to the athletic center. Please be careful not to block the parking space reserved for the doctor.

Visitor Parking: Visitor parking may be reserved in advance through your host. Otherwise, visitor parking at NJIT is available in the NJIT parking deck. Turn right onto Warren Street. Turn right onto Colden Street and proceed around the block to Summit Street. Parking Deck entrance is located to your right before the intersection with Warren Street.

Parking for on-campus athletic contests: NJIT is offering free off-street parking for fans attending regular season home soccer and volleyball matches and basketball games. The parking entrance, marked by a yellow sign is located on New Street.

OTHER TRANSPORTATION SYSTEMS

Newark Liberty International Airport: Minutes from the NJIT campus. A minibus (Newark Airlink) or taxi service connects the airport with Penn Station in Newark. Bus, Newark Light Rail, and taxi connections are available at the station.

Newark Penn Station: Located in downtown Newark, connections to the NJIT campus may be made by bus, Newark Light Rail, or taxi.

Morris & Essex Broad Street Station: A five-block walk to the NJIT campus via MLK Boulevard to Central Avenue. Taxi service is also available.

Newark Light Rail: From Penn Station in Newark, take the Warren Street stop for the NJIT campus. The Warren Street stop is on the sidewalk behind the press box for Lubetkin Field at J. Macolm Simon Stadium.

HOTELS DOWNTOWN

Hilton Newark Gateway
Gateway Center, Raymond Boulevard &
McCarter Highway
Newark, NJ, 973/622-5000

Robert Treat Hotel
50 Park Place, Newark, NJ, 973/622-1900

Hampton Inn & Suites Newark Riverwalk
100 Passaic Ave, Harrison, NJ, 973/483-1900

NEAR NEWARK LIBERTY INTERNATIONAL AIRPORT

Best Western Newark Airport West
101 International Way, Newark, NJ, 973/621-6200

Hilton Newark Airport
1170 Spring Street, Elizabeth, NJ, 908/351-3900

Holiday Inn Newark Liberty International Airport
160 Frontage Road, Newark, NJ, 973/589-1000

2015-16 HIGHLANDERS TENNIS

SEPTEMBER

Sat.-Sun. 12-13 at Army Shootout (M)
 Fri.-Sun. 18-20 at Navy Invitational (W)
 Fri.-Sun. 18-20 Ivy Plus Invitational (at Princeton) (M)
 Fri.-Sun. 25-27 at Army Invitational (W)

OCTOBER

Sat. 3 **ALUMNI EVENT (W) (M)**
 Sat.-Wed. 3-7 ITA Men's All-American Championships (Tulsa, OK)
 Fri.-Sun. 9-11 Princeton Invitational (M)
 Thur. 22 ITA Northeast Championships (at Dartmouth) (W)
 Thu.-Mon. 22-26 ITA Northeast Championships (at Yale) (M)
 Sat. 31 **NJIT INVITATIONAL (W)**

JANUARY

Sat. 23 **NJIT WOMEN'S TENNIS INVITATIONAL (W)**
 Sat.-Sun. 30-31 **NJIT WINTER INVITATIONAL (M)**

FEBRUARY

Fri. 5 **SETON HALL (W)** 4pm
 Sun. 7 at Princeton (M) 10am
 Sun. 7 **LIU BROOKLYN (W)** 1pm
 Wed. 10 MARIST (W) 4pm
 Fri.-Sun. 12-14 ECAC Championships (M)
 Sat. 13 **FAIRFIELD (W)** 2pm
 Sun. 14 **FORDHAM (W)** 1pm
 Fri. 19 at St. John's (M) 12pm
 Sat. 20 at Cornell (W) 2pm
 Sun. 21 at Penn State 4pm
 Thur. 25 at Rutgers (W) 12:30pm
 Sat. 27 at Army (W) TBD
 Sat. 27 **FAIRFIELD (M)** TBD

MARCH

Fri. 4 at Army (M) 3:30pm
 Fri. 4 **ST. JOHN'S (W)** 6pm
 Sat. 5 vs. Stony Brook (at Army) (M) 1pm
 Sun. 6 **DREXEL (M)** TBD
 Sun. 6 **DREXEL (W)** 11am
Humacao, Puerto Rico
 Tue. 15 Navy (Harbour Lakes Resort) (W)
 Wed. 16 Lehigh (at Harbour Lakes Resort) (W)
 Thur. 17 Buffalo (at Harbour Lakes Resort) (W)
 Thur. 24 **NORTH FLORIDA * (W)** 2pm
 Sat. 26 **STETSON * (W)** 10am
 Sat. 26 **STETSON * (M)** TBD
 Thur. 31 at Florida Gulf Coast * (M) 2pm
 Thur. 31 at Florida Gulf Coast * (W) 6pm

APRIL

Sat. 2 **STONY BROOK (W)** 1pm
 Sun. 3 at North Florida * (M) 11am
 Thur. 7 at Kennesaw State * (W) 10am
 Thur. 7 at Kennesaw State * TBD
 Sat. 9 at Lipscomb * (W) 10am
 Sat. 9 at Lipscomb * (M) TBD
 Thur. 14 at Sacred Heart (M) 3pm
 Sat. 16 **USC UPSTATE * (W)** 2pm
 Sat. 16 **USC UPSTATE * (M)** TBD
 Fri.-Sun. 22-24 Atlantic Sun. Conference Tournament (W) (M) TBD

Head Coach: Ira Miller

Assistant Coach: Jacob Meyer Volunteer Assistant Coach: Livia Gherman

Home matches **CAP/BOLD** at The Naimoli Family Athletic and Recreational Facility