



# NEW JERSEY INSTITUTE OF TECHNOLOGY WOMEN'S SOCCER

2014 MEDIA GUIDE



# HIGHLANDERS

[njithighlanders.com](http://njithighlanders.com)









**Follow us on Facebook: <https://www.facebook.com/pages/NJIT-Womens-Soccer/146260138795850>**  
**Follow us on Twitter: <http://twitter.com/NJITWSoccer>**

## TABLE OF CONTENTS

About NJIT .....	2-7
University Administration .....	8-11
Athletics Senior Staff .....	11
Sports Medicine .....	12-13
Strength & Conditioning .....	14-15
Academic Enrichment .....	15-16
Remembering Joe Caiola .....	17
Athletic Administration & Coaching Staff ..	18
NJIT in Division I .....	19-21
Athletics Facilities .....	22-26
About Newark .....	27
Sports & Entertainment Around Newark	28-29
Roster .....	30
Team photos .....	31
Head Coach Mandi Ridsen .....	32-33
Assistant Coaches .....	34
2013 Statistics and Results .....	35
School Records .....	36-37
Coaches Career Records .....	37
Division I Records .....	38
Division I Superlatives .....	39
All-Time Conference Honors .....	39
All-Time vs. Opponents .....	40
Year-by-Year .....	41-44
All-Time Roster .....	45
Hall of Fame .....	46
Directions to NJIT .....	47

## WOMEN'S SOCCER

### Head Coach (alma mater, year):

Mandi Ridsen (Auburn, 1999),  
973-596-2928/[ridsen@njit.edu](mailto:ridsen@njit.edu)

**Career Record:** 8-10-1 (1)

**Assistant Coach:** Scott Waddell (Columbia '07)

**Volunteer Coach:** Tun Verschuren (University of The Hague, '09))

**Captains:** Game captains

**2013 overall:** 8-10-1

## QUICK FACTS

**Location:** University Heights, Newark, NJ

**Founded:** 1881

**Enrollment:** 10,130 (total) 7,286 (undergraduate)

**NJIT website:** [www.njit.edu](http://www.njit.edu)

**Nickname/Colors:** Highlanders/  
Red and White (Blue accent)

**Home Field:** Lubetkin Field at Mal Simon Stadium (1,000; lighted; SprinTurf surface)

**Affiliations:** NCAA Division I, ECAC

**University President:** Dr. Joel Bloom, EdD

**Director of Athletics:** Lenny Kaplan

**Athletic Department Phone:** 973-596-3636

## WHY HIGHLANDERS?

The home of NJIT, University Heights, was formerly known as the Newark Highlands and NJIT's mailing address used to be High Street, until the thoroughfare was renamed in memory of Dr. Martin Luther King, Jr.

In 2006-07, NJIT athletics, in keeping with its move to NCAA Division I, unveiled a new graphic identity, which included a new Highlanders logo. Developed by CN Foundry for NJIT, the logo depicts the traditional Highlander, whose ferocity and bravery against all odds are the stuff of legend.

## MEDIA RELATIONS

### NJIT Athletics website:

[www.njithighlanders.com](http://www.njithighlanders.com)

**Facebook & Twitter:** @NJITHighlanders

### Assistant AD for Sports Information:

Tim Camp, 973-596-8461/[timothy.camp@njit.edu](mailto:timothy.camp@njit.edu)

**Assistant SID:** Stephanie Pillari, 973-596-8324/  
[pillari@njit.edu](mailto:pillari@njit.edu)

**Assistant SID:** Courtney Caden, 973-596-8485/  
[caden@njit.edu](mailto:caden@njit.edu)

## MEDIA INFORMATION

This guide is designed to assist in coverage of NJIT women's soccer. For home matches, the NJIT sports information office will provide an official box score following each game. Coach Mandi Ridsen and requested players will be available for interviews on the field following a 10-minute cooling off period. Radio broadcast requests should be made at least 10 business days prior to the contest. Requests for coach and player interviews on nongame days should be made through the NJIT sports information office (973-596-8461).

## CREDITS

The 2014 NJIT Women's Soccer Media Guide is a production of the NJIT Sports Information Office in cooperation with the Office of Strategic Communications. Written and edited by Tim Camp and Stephanie Pillari. Cover and interior design by Karyn Olsen. NJIT photographs and information courtesy of Office of Strategic Communications. All interior team and action photography by Larry Levanti. Red Bull Arena photo (p. 27) courtesy of Getty Images/RBNY.



# About NJIT



**NJIT is New Jersey's Science & Technology University. With roots going back to 1881, when it was founded as Newark Technical School, New Jersey Institute of Technology observed its 125th anniversary in 2006.**

**Located in University Heights, Newark, NJ, home to more than 30,000 college students, NJIT's campus is just 10 miles from New York City.**

Playing a critical role in shaping New Jersey's future, NJIT, as a major public technological university, is an important pipeline for the flow of technology into society. The university's educational programs prepare students to be leaders in the technology-dependent economy of the 21st century. University researchers seek new knowledge to improve processes and products for industry. Through public and private partnerships and economic development efforts, the university helps to grow new business ventures that fuel the economy.

In recent years, NJIT has put tens of millions of dollars toward new and improved buildings and facilities on the 48-acre campus, including biomedical engineering labs and a campus center.

## Instructional Programs

NJIT offers an ever-expanding array of educational programs, with many new programs added in the last five years and more to come. In 2014 NJIT lists 125 undergraduate and graduate degree programs through six schools:

- Newark College of Engineering
- College of Architecture and Design
- College of Science and Liberal Arts
- School of Management
- Albert Dorman Honors College
- College of Computing Sciences

NJIT has 277 tenured or tenure track faculty; 99 percent of whom hold doctoral degrees or the highest degree attainable in their field. The student-faculty ratio is 16:1, with over 7,000 undergraduate students and nearly 3,000 graduate students. Our students hail from 33 states and more than 100 countries to rank eighth in the nation for diversity.





Albert Dorman Honors College enrolls more than 500 students who take advantage of honors courses, research opportunities, advising and mentoring. Honors College students have SAT scores ranking in the top 10 percent nationally.

With nearly 50,000 alumni, NJIT is an acclaimed institution.

- *BuzzFeed.com* ranked NJIT as the #1 higher education value nationally when considering annual tuition cost and average starting salary of graduates.
- Top one percent for return on investment and eighth in alumni earning potential among public universities nationwide – *PayScale.com*
- Top 10 percent nationally for return on investment and one of four best buys in New Jersey higher education – *Bloomberg Businessweek*
- Third in nation among America's Most Underrated Colleges – *BusinessInsider.com*
- Top National University – *U.S. News and World Report*
- 149th among national universities overall for its range of undergraduate majors and master's and doctoral degree programs and commitment to groundbreaking research - *U.S. News and World Report*
- An "America's Top College" – *Forbes.com*
- A *Princeton Review* Best College
- Top 200 American research universities – *The Center for Measuring University Performance at Arizona State*
- Top 50 among colleges without a medical school for research expenditures and top 10 among universities whose main research is in engineering – *National Science Foundation*
- Top 10 among technological universities in faculty scholarly productivity – *Academic Analytics*
- Top 100 producers of minority degrees, including fifth in the nation for bachelor's degrees in engineering technologies to all minority students – *Diverse: Issues in Higher Education*



# About NJIT

## Research

NJIT's research expenditures totaled more than \$110 million in FY2014 and faculty members welcome student collaboration on research projects.

As of September 1, 2014, NJIT had 185 issued U.S. Patents and 133 pending U.S. patent applications.

## Economic Development

NJIT is committed to economic development for Newark and the region. The university operates several outreach centers that provide direct technical assistance to the state's businesses with the goal of helping small and medium-sized companies. NJIT is also the home of New Jersey's oldest and largest incubator facility, and was one of the first institutions in the nation to adopt economic development as a fourth mission element, together with instruction, research and community service.

The Enterprise Development Center (EDC) at NJIT is New Jersey's largest high technology and life science business incubator, and one of the largest in the nation. EDC resident companies have attracted more than \$80 million in third-party funding since entering the incubator, and generated revenues of \$50 million last year. The approximately 90 member companies employ roughly 500 people.

## The Career Edge

- NJIT was named in the top 1 percent for return on investment and 8th in alumni earning potential among public universities nationwide by *Payscale.com*.
- Students get a head start on their careers through cooperative education, salaried internships that relate specifically to their field of study.
- The 10 fastest-growing occupations for college graduates include NJIT's newest program areas—physician assistant and physical therapy—as well as computer-related occupations.
- Among the CEOs of the S&P 500 companies, engineering is the single most common undergraduate degree (22 percent of the group). More than half of the CEOs have undergraduate degrees in engineering, business management, science, math, or computing.

## The Global Edge

The diversity in NJIT's student body and faculty prepares graduates to understand and succeed in the global marketplace.



## The Technology Edge

NJIT has been designated one of the nation's most technologically sophisticated universities by *Forbes.com* and a *Princeton Review* survey and the university has received major funding from the National Science Foundation and the National Security Agency in recent years.

## The Academic Edge

- NJIT named a Most Wired College by *Princeton Review*.
- NJIT was the first recipient of the Excellence in Technology Education Award presented by New Jersey Technology Council (NJTC), which annually recognizes outstanding technology companies and individuals who contribute to "growth, achievement, and excellence in diverse technology sectors of New Jersey."
- *Forbes.com* and a *Princeton Review* survey designated NJIT as one of the nation's most technologically sophisticated universities based on factors such as the ratio of computers to students, campus-wide and wireless networks, and technology-enhanced learning.
- NJIT has received major National Science Foundation (NSF) funding to define the next generation of computing applications. Most notable is the creation of *SmartCampus*, a wireless peer-to-peer, location-aware community system that immerses students in a world of wearable computers.
- NJIT has been designated a Center of Academic Excellence in Information Assurance (Homeland Security) Education by the **National Security Agency**.
- NJIT partners with Iowa State University in the Center for Information Protection (Homeland Security), an NSF-supported cooperative research center in information assurance.





# About NJIT



## The Regional Edge

New Jersey, with America's highest concentration of pharmaceutical, hi-tech, biotech, and medical device companies is the place to study technology. It has the nation's highest per capita number of engineers and scientists as residents, while also leading in per capita rate of patents issued. Further, the Newark-New York region is a living laboratory for architecture and building sciences, environmental engineering and transportation. .

## The Research Edge

NJIT has been designated by the State of New Jersey as the Homeland Security Technology Systems Center and NJIT operates the world-renowned Big Bear Solar Observatory.

## A History of NJIT

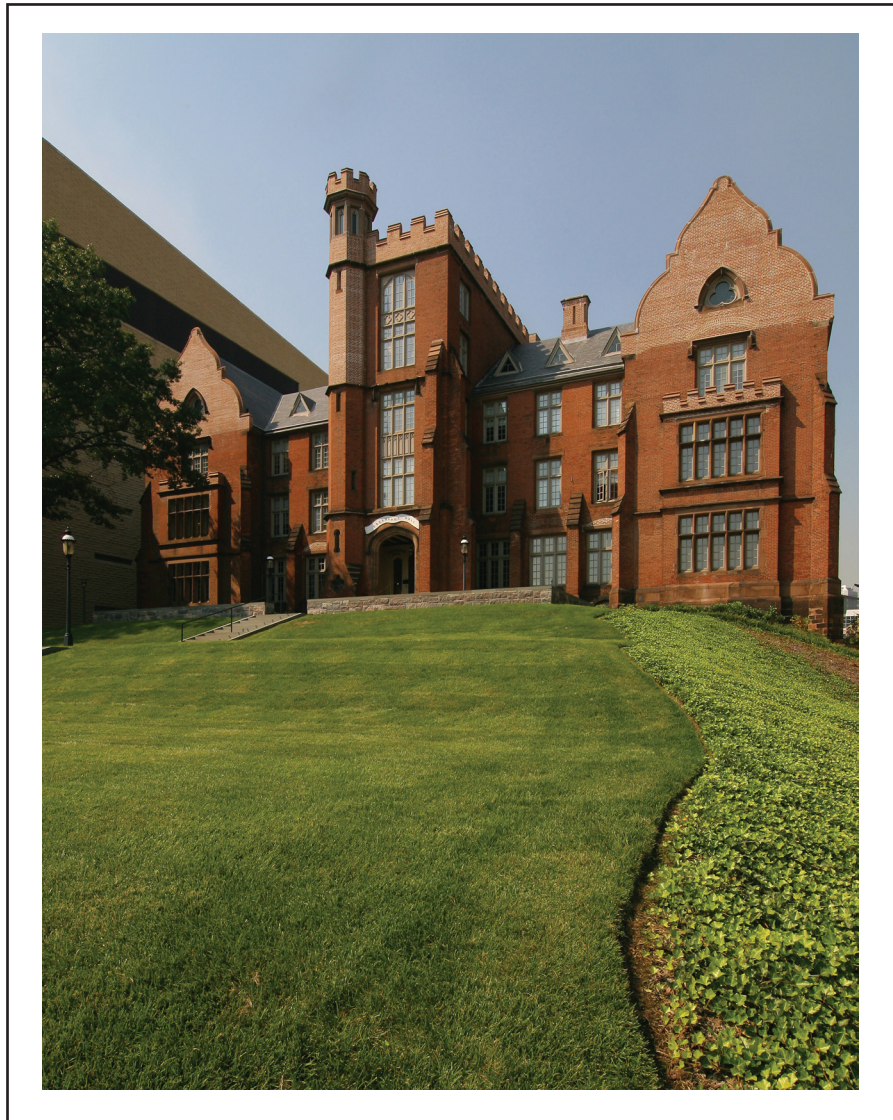
From the Industrial Revolution to the Information Age, New Jersey Institute of Technology has a rich history with its beginnings developing from the industrial age.

In 1881, an act of the New Jersey State Legislature, recognizing an urgent need, sought a home for what would be the state's technical school. The efforts of Newark's public and private sectors resulted with the opening of Newark Technical School, addressing the state's need.

Over time, the university expanded its curriculum and mission. In 1919, the university established baccalaureate programs in three engineering fields. By the middle of the 20th century, Newark Technical School was transformed into the robust Newark College of Engineering.

The post-war period was one of enormous activity with regular expansion of the campus, as well as the introduction of doctoral level programs. In 1975, with the addition of the New Jersey School of Architecture, the institution had evolved into a technological university, emphasizing a broad range of degrees and dedication to significant research and public service. Newark College of Engineering, stronger than ever, remained intact, but a new university name -- New Jersey Institute of Technology -- reflected the institution's expanded mission.

A broadened mission called for the creation of a residential campus and the opening of NJIT's first dormitory in 1980 began a period of steady growth that continues. Two new schools were established during the 1980s--the College of Science and Liberal Arts (1982) and the School of Industrial Management (1988). The Albert Dorman Honors College was established in 1994, and the College of Computing Sciences, was created in 2001. Beginning in 2009 the College of Architecture and Design was created to house the New Jersey School of Architecture and the new school of Art and Design.





# Administration

## Dr. Joel Bloom

### *President, New Jersey Institute of Technology*

Appointed President of New Jersey Institute of Technology on January 12, 2012 by unanimous



vote of NJIT's Board of Trustees, Joel S. Bloom started his career in industry working as an economist.

He subsequently became an educator and administrator for the New York City public schools. Prior to coming to New Jersey, he worked as a research director and instructor at Teachers College, Columbia University.

In New Jersey, he managed state and federally-funded curriculum development and training centers for the state. From 1983 through 1990, Dr. Bloom served as assistant commissioner in the NJ Department of Education for the Division of General Academic Education. He was responsible for managing many of the education department's initiatives including competency testing, curriculum content standards, pre-school programs, establishment of 17 model effective schools, over 300 grants and contracts, and a \$24 million budget.

Immediately prior to his appointment as President, he served as Interim President from September 2011 until January 2012.

Prior to that, he was NJIT's Vice President for Academic and Student Services, as well as founding dean of the Albert Dorman Honors College.

Indeed, since joining NJIT in July 1990, Dr. Bloom has served the university in many capacities.

Promoted in 1996 to Vice President for Academic and Student Services, he was responsible for nine divisions of the university, including pre-college programs, enrollment management, continuing professional education, career development services, dean of student services, freshman studies, educational opportunity programs, library services, physical education and athletics.

Dr. Bloom was appointed as the first dean of the Albert Dorman Honors College in 1998, in addition to his vice president responsibilities. The Honors College enrolls over 650 students who come from 15 states and several foreign countries. The average SAT score is over 1340 and the majority of the incoming freshman class members graduated in the top 15 percent of their high school class. More than 50 percent of the Honors College students maintain a grade-point average higher than 3.5.

Dr. Bloom is chair of the Science Park Board, treasurer of the NJ President's Council, and treasurer of the NJEDge.Net Board. In addition, he serves as a member of the following boards: the Board for Communities and Schools, Newark Alliance, Philadelphia Alliance for Minority Participation, La Casa de Don Pedro, and the Association of Public and Land-grant Universities Presidents Council. Dr. Bloom has been the recipient of national and state education awards, as well as federal, foundation and corporate grant awards. He has published journal articles and presented papers on school improvement, curriculum development, college transition and student assessment.

Dr. Bloom holds a master's degree and a doctorate from Teachers College, Columbia University. He also earned master's and bachelor's degrees from Hunter College of the City University, New York City.

## Charles J. Fey

### *Vice President for Academic and Student Services*



Dr. Fey joined NJIT in September 2012 with 39 years of leadership experience in student services as Vice President of Academic Support and Student Affairs.

At NJIT, he continues his commitment to creating a campus climate that promotes student achievement and student success. His personal philosophy of student engagement extends to the development of innovative programs that inspire challenging and engaging student experiences and encourage each student to reach for his/her dream and work until it is achieved.

Dr. Fey's strong record of accomplishments demonstrates his deep understanding of emerging issues and trends that affect metropolitan campuses and the students who attend them. In addition to his direct involvement with students, Fey oversees numerous offices and departments at NJIT, including including Intercollegiate Athletics, Recreation and Intramurals, Physical Education.

Fey actively participates in student affairs business on a national level and holds or has held board positions in ACPA, NASPA, and APLU. He was the founding president of the Massachusetts College Personnel Association and was president of the Texas Association of College and University Personnel Association. Fey has received numerous awards including the Esther Lloyd Jones Professional Service Award from ACPA; is a Diamond Honoree of ACPA's Foundation; twice received the Outstanding Service award from the Commission on Administrative Leadership of ACPA; and an exemplary service award from MCPA.

Fey earned his bachelor's degree in liberal arts and his masters of education degree in counselor education, college student personnel services, both from The Pennsylvania State University. He holds a doctorate in higher education administration from Texas A&M University.

Prior to NJIT, he was the Vice President for Student Affairs at The University of Akron; was Vice President for Student Affairs at University of Maryland, Baltimore County (UMBC); Dean of Students at the University of Texas at El Paso; served as Vice President and Dean of Student Life at Our Lady of the Lake University in San Antonio; Dean of Students at St. Mary's University, also in San Antonio; Associate Dean of Student Affairs at Keene (NH) State College; Director of Housing/Resident Life at Catholic University of America; and in numerous student affairs and other administrative posts at Newbury Junior College in Boston.

Married to Melba Ann Fey since 1985, Charlie and Melba have two daughters, Kelly Prestel, living in Boston, and Chelsea Fey, living in Arlington, VA and two sons, Lloyd Lopez and Matt Lopez, who live in San Antonio.



# Administration

## Lenny Kaplan

### *Director of Athletics*



Since taking over as head of NJIT's division of physical education and athletics in August 2000, Lenny Kaplan has been instrumental in guiding NJIT's reclassification to NCAA Division I.

First, Kaplan helped stabilize and expand a program that was entering its fourth year in Division II when he arrived in Newark. In late 2002, after discussions with then-President Dr. Robert A. Altenkirch and then-Vice President Dr. Joel Bloom, Kaplan took on the task of steering NJIT's programs into Division I, a process that reached fruition with the NCAA's granting active Division I status, with full championship eligibility effective September 1, 2009.

Throughout Kaplan's tenure, NJIT has enhanced the athletics program, particularly in areas that benefit the student-athletes directly. A hallmark in achieving that aim was the Highlanders Athletics Campaign, which announced in the summer of 2009 that it had raised \$5.4 million against a goal of \$5 million. Of the \$5 million in the goal, \$3 million was for facilities, \$1.5 million for athletics scholarships, and \$500,000 for program support.

The sports offerings have expanded to its current 19 varsity programs, with the newest, men's lacrosse set to debut in 2015. Since 2004, NJIT has renovated its two main on-campus venues—Lubetkin Field at Mal Simon Stadium and the Estelle and Zoom Fleisher Athletic Center. Further, the newest facility, the Naimoli Family Athletic and Recreational Facility, a 25,600-square foot building opened in March 2011 as a heated and air conditioned space that includes indoor tennis courts used for intercollegiate competition.

On Kaplan's watch, the school signed a 10-year partnership to play all home baseball in the professional Bears and Eagles Riverfront Stadium and later agreed to host basketball in the Prudential Center, the downtown Newark home of the NHL's New Jersey Devils.

Under Kaplan's leadership, many teams achieved regional and national Division II ranking. Success for several women's teams was unprecedented, with basketball, tennis and soccer all reaching postseason play for the first time under his administration.

Additionally, men's volleyball captured a 2007 divisional championship in the Eastern Intercollegiate Volleyball Association and the next year reached the EIVA playoff semifinals hosted by eventual 2008 national champion Penn State.

In 2009-10, NJIT's first full year as an active member of NCAA Division I, the women's volleyball team and senior Sabrina Baby became the school's first national statistical champions at the Division I level, as team and individual leaders, respectively in digs per set. Baby was honored as NJIT's first CoSIDA Academic All-America in the Division I era, earning third-team national honors.

Christian Baumbach made history in 2009 when he was NJIT's first Division I individual sport conference champion, taking first place in the Great West Conference cross country race and in the prestigious IC4A University Division race, a competition held for the 101st time in 2009.

Kaplan guided the Highlanders into the all-sports Great West Conference and the women's tennis team won back-to-back GWC titles in 2011 and 2012. In 2012-13, both NJIT basketball teams captured GWC crowns, with the men winning their regular season title and the women's winning the GWC postseason tournament.

Two Highlanders men's basketball standouts—Isaiah Wilkerson (Class of 2012) and Chris Flores (Class of 2013)—received honorable mention on the Associated Press All-America team, the first such national honorees for NJIT at the Division I level.

Wilkerson continued his career as a professional in the NBA D-League and Flores and women's basketball star Rayven Johnson (Class of 2013) went overseas to professional careers in Germany.

In 2012-13, baseball pitcher Mark Leiter, Jr., was selected by the Philadelphia Phillies organization in the Major League Baseball First-Year Player draft and fellow pitcher Tripp Davis signed as a free agent with the Kansas City Royals organization.

In 2013-14, Marko Drljic became the first NJIT men's soccer player to be selected to the All-Region season honors from the NSCAA at the highest level, earning NSCAA/Continental Tire Division I Men's All-North Atlantic Region honors, while men's tennis player Markus Schultz advanced to the round of 16 at the 2013 USTA/ITA National Regional Championships, the furthest any NJIT tennis player has advanced at the ITA tournament.

Two members of the NJIT men's basketball team, Terrence Smith and Damon Lynn finished the 2013-14 season ranked in the top 4 in the nation—Smith third in individual field-goal percentage and Lynn fourth in 3-point field goals made.

NJIT men's fencer David Kong whose weapon is the foil, earned a 16-place finish at the US National Championships and ranks 24th in the nation and 14th under 20. He placed 18th in the men's foil competition at the 2014 NCAA Fencing Championships, becoming the first NJIT fencer in 10 years to advance to the championships.

John Porteous became the first NJIT track and field athlete to qualify to the 2014 NCAA Track and Field Regional, earning a spot in the men's 400-meter hurdles.

Two NJIT sports, women's tennis and men's soccer, were invited to join automatic qualifying Division I conferences in their respective sports. Women's tennis is in the America East Conference, reaching the AEC final in 2014 and men's soccer is one of programs in the Sun Belt Conference, which is sponsoring the sport in 2014 for the first time since 1995.

Before coming to NJIT, Lenny Kaplan served 11 years at Manhattan College, where he began as Manhattan's director of operations and was assistant athletics director from 1991-2000.

Kaplan, a 1988 graduate of St. John's University with a degree in athletics administration, resides in Merrick, NY, with his wife, Nancy, and their sons, Michael and Joshua.

---

## Athletics Senior Staff



**Alexis Schug**  
Assoc. Director of Athletics/SWA  
(973) 596-8452 [schug@njit.edu](mailto:schug@njit.edu)



**Tim Camp**  
Asst. Director of Athletics/Sports Information  
(973) 596-8461 [timothy.camp@njit.edu](mailto:timothy.camp@njit.edu)



**Jayson Smikle**  
Assistant Athletic Director for Compliance  
(973) 596-5278 [jsmikle@njit.edu](mailto:jsmikle@njit.edu)



# Administration

## Sports Medicine

NJIT sports medicine is moving forward with the growth of the Highlanders program. Head trainer Matt Koscs, MS/ATC, oversees the program, ably assisted by assistant trainers Paul Grayner, MED/ATC; Melissa Maskery, MS, ATC; Brittany Vondran, MS/ATC; and, Kyle Tuohy, BS/ATC.



**Matt Koscs, ATC, Head Athletic Trainer**

Matt Koscs, who earned both his bachelor's and master's degrees from University of Delaware, has served NJIT as head trainer since July 2009, a year after he joined the staff as an assistant trainer.

As an undergraduate at Delaware, he was recipient of the Paris Delligatti Memorial Award for Excellence in Athletic Training. He earned his MS in Exercise Science from Delaware in 2008.

Prior to his arrival at NJIT, Matt served three years as the head athletic trainer at Hodgson Vocational Technical High School in Newark, DE, from 2005 to 2008.

In addition to his work at the high school level, he was head athletic trainer for the Delaware Dynasty semi-pro soccer team in Wilmington, as well as with the Kirkwood Soccer Club in New Castle in 2005 and 2006.

He was employed from 2005 to 2008 at Christiana Care Physical Therapy Plus, in Newark, DE, where he was an athletic trainer and was the Director of Athletic Training Services in a clinical setting.

He is a NATABOC certified athletic trainer, as well as holding additional certifications as a professional rescuer and in first aid.

He resides in Metuchen, NJ with his wife Kristin and daughters Eloise, Claire and Madeleine.



**Paul Grayner, ATC, Assistant Athletic Trainer**

Paul Grayner, who joined the NJIT staff as an assistant athletic trainer late in the 2008 calendar year, has a diverse background in athletic training, having served at the college and professional levels, as well as in a fitness center setting.

A graduate of Saint Leo College in Florida and holder of a master's degree from American University in Washington, DC, Grayner has served as both a head and assistant trainer in the past.

From the mid-1970s to the mid-1980s, he was a trainer in the minor league systems of the New York Yankees and New York Mets from 1977 to 1985 and in 1984 he was assistant trainer with the Mets. He later worked with the Long Island Knights professional basketball team.

At the collegiate level, he was head trainer at Division I Fairleigh Dickinson University in Teaneck, NJ from 1989 to 1998 and he earlier worked as an assistant trainer at Hofstra (1982-85) and Adelphi (1985) on Long Island before joining FDU as an assistant (1986-89).

In addition to his work in athletic training, Grayner is a financial services representative and a life insurance sales representative.

He resides in Dumont, NJ.



**Brittany Vorndran, ATC, Assistant Athletic Trainer**

Brittany Vorndran, who joined the NJIT staff as an assistant athletic trainer in the summer of 2012, earned her bachelor's degree, majoring in athletic training, from Bridgewater (MA) State University in 2010 and was the school's 2008-09

Athletic Training Student of the Year.

She earned her master's in Kinesiology at James Madison University in Harrisonburg, VA, in May 2012.

At James Madison, she worked with the cross country, track and field, tennis and cheerleading teams.

A resident of Millville, NJ, she has worked as a substitute teacher for the Millville Board of Education.



**Melissa Maskery, ATC,  
Assistant Athletic Trainer**

Melissa Maskery, who joined the NJIT staff as an assistant athletic trainer in the summer of 2013, earned her bachelor's degree, majoring in athletic training and minoring in strength and conditioning, from the

University of Delaware in 2011.

She earned her master's in athletic training at Temple University in May 2013.

As a graduate assistant, she worked in Philadelphia with several Division I teams at Drexel University and as an undergraduate, on the medical staff for Delaware's 2010 Division I Football Championship Series (formerly known as Division I-AA) national runner-up.

She has worked as a trainer at numerous summer camps and before coming to NJIT, she earned the 2013 Merit Award for Research in the College of Health Sciences & Social Work and was the recipient of Drexel University Dragon Award for Leadership.

She is married to Mark Mackey.



**Kyle Tuohy, ATC, Assistant  
Athletic Trainer**

Kyle Tuohy, a 2014 summa cum laude graduate of East Stroudsburg (PA) University, joined the NJIT athletic training staff in September 2014.

Tuohy, who will attend graduate school while working

at NJIT, won multiple awards from his alma mater, including the David Caryl Athletic Training Outstanding Student Award in May 2014.

He had varied clinical internship experience starting in the Fall Semester 2012 and continuing through his senior year.

His internships included stints with the East Stroudsburg women's basketball team; Parkland High School and Pen Argyl High School, both in Pennsylvania; the Tennessee Smokies professional baseball team, Class AA minor league affiliate of the Chicago Cubs; and Lafayette College in Easton, PA, where he worked closely with the Leopards football team in season and also worked with athletes from all in-season sports in the Fall Semester.

He holds several profession-related certifications, including from the National Athletic Trainers Association.



**Louis Rizio, MD, Team  
Physician**

Dr. Rizio is a board certified orthopedic surgeon and is fellowship trained in the field of sports medicine. He is a graduate of Rutgers and after earning his medical degree from the UMDNJ/New Jersey Medical School (recently

reorganized and renamed Rutgers Biomedical and Health Sciences), Dr. Rizio completed his orthopaedic residency at Tufts University in Boston.



# Administration

He then completed a sports medicine fellowship at the University of Miami. During his fellowship, he was assistant team physician of the Miami Dolphins, University of Miami Hurricanes, and the Florida Marlins.

Dr. Rizio, who specializes in sports-related injuries, practices at the Sports Medicine and Orthopaedic Center in Livingston, NJ. Prior to starting his own practice, Dr Rizio was the Chief of Sports Medicine at the NJ Medical School from 2000-2005. He currently is a professional, college, and high school team physician.

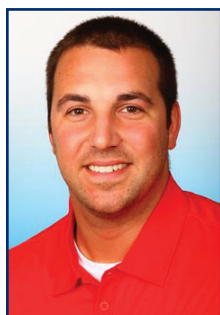
In 2013, Dr. Rizio was honored by the magazine New Jersey Monthly on its "Jersey Choice Top Doctors" list.

## Strength and Conditioning

There are many ways to make a team better and a vital path to improvement comes with the mantra "bigger, stronger, faster."

It's how teams get better from within by maximizing individual and team performance in competition. The Strength and Conditioning staff also works closely with the Athletic Training Staff in the areas of injury prevention and rehabilitation.

In the summer and fall of 2014, NJIT's Strength and Conditioning took new direction with the appointment of Bobby Fisk as Head Strength and Conditioning Coach and Drew Culp as Fisk's Assistant Coach.



**Bobby Fisk, Head Strength & Conditioning Coach**

Bobby Fisk, who was a basketball player in his own college days and coached the sport after college, comes to NJIT from Xavier University in Cincinnati, where he was assistant coach of strength and conditioning for

the entire Musketeers' program, which competes in the Big East Conference.

Fisk, a native of Schenectady, NY, spent over two years at Hobart and William Smith Colleges in Geneva, NY, where, as head strength and conditioning coach, he worked with successful teams, including women's soccer (William Smith College), which won the 2013 NCAA Division III National Championship; football (Hobart), which advanced to the 2012 Division III national quarterfinals and the regional finals in 2011 and 2013; and basketball, where Hobart reached the second round of the 2012 NCAA Tournament.

Moving to the Division I level with Xavier in 2013-14, Fisk worked with all 16 of the school's teams, with a primary assignment to women's basketball, men's and women's soccer, baseball, and men's and women's tennis.

He is a graduate of the State University of New York College at Oneonta (BS, Business Economics, 2008), Averett University of Danville, VA (MBA, 2010), and California University of Pennsylvania (MS in Exercise Science, Performance Enhancement & Injury Prevention, 2013)

As a student-athlete, Fisk was a men's basketball player at NCAA Division I UMBC in Baltimore for three years before transferring to Oneonta, where he was on the team for two years, serving as captain as a senior and earning All-State University of New York Athletic Conference honorable mention.

As a senior for Oneonta's Red Dragons, he finished 16th in the nation in Division III in 3-point shooting percentage (.441) and 22nd in 3-pointers made per game (3.2) as a senior at Oneonta.

After graduation from Oneonta, he entered coaching while pursuing his master's degree at Averett, serving that program as assistant men's basketball coach (two years) and head strength and conditioning coach (one year).

Having received his master's degree from

Averett in December 2010, he returned home to the Schenectady area and worked April 2011 to July 2011 as assistant strength and conditioning coach at nearby Siena College and with the minor professional basketball Albany Legends (head strength and conditioning coach).

Fisk holds multiple certifications and professional memberships.



### **Drew Culp, Assistant Strength & Conditioning**

NJIT's head strength and conditioning coach Bobby Fisk named Drew Culp to be his assistant coach in September 2014.

Culp, who earned his bachelor's degree from Penn State University in 2010 and his master's degree from

Penn State in 2012, most recently served as a volunteer assistant strength and conditioning coach at nearby Seton Hall prior to accepting his position with NJIT.

At Seton Hall, Culp worked with the school's Big East Conference men's and women's basketball teams, as well as with the men's soccer team.

Between college and coming to New Jersey, Culp worked at Velocity Sports Performance in Irvine, CA. He was a Sports Performance Coach and Assistant Sports Performance Director. Specifically, he was the Head Strength and Conditioning Coach for the El Toro High School football team and also assisted in training National Football League combine athletes. He also offered private training to athletes in a range of sports and age levels.

Drew Culp was a graduate assistant strength and conditioning coach at Penn State, working with the Nittany Lions football team for over a year through preseason 2012 and working with 11 Olympic Sports teams in his final semester.

He holds multiple certifications, including both strength and conditioning and first aid and CPR.

## **Academic Enrichment**



### **Sandra Taylor, Director of The Learning Center**

Sandra Taylor was appointed as Director of The Learning Center in late September 2014 after serving as Interim Director for the previous 16 months.

She joined NJIT in January 2010 as Academic Advisor for Student-

Athletes working in NJIT's Center for Academic and Personal Enrichment (CAPE), which has since been renamed as The Learning Center.

She mentored student-athletes in the areas of academic support, personal development, leadership, and community service. She was instrumental in bringing the Chi Alpha Sigma Honor Society for student-athletes to campus and has been individually certified from the N4A (National Association of Academic Advisors for Athletics) as an academic advisor for student-athletes.

In May 2013, she was elevated to Interim Director of CAPE and presided over its transition to the Learning Center in August of 2014. The Learning Center provides academic support to all students, mentoring and workshops, tutoring in areas outside of math and writing, and testing accommodations for students with disabilities. She has served on NJIT's Strategic Planning, Academic Advising, Retention and Persistence, Customer Service, Student Satisfaction, and Athletic Oversight Committees.

Prior to joining NJIT, Taylor spent 17 years as a key member of the Manhattan College Department of Athletics. She earned both her bachelor's degree in secondary education and her master's degree in special education from Manhattan College and is working on her doctorate in educational leadership at St. Mary's University in Winona, MN.

Working in the athletics department at Manhattan, a founding member of the Metro Atlantic Athletic Conference, Taylor was Associate Director of Athletics and Senior Woman Administrator, having filled those posts from 1996 until joining NJIT in 2010,



# Administration

For much of her time on the Manhattan staff (1995 to 2003), she was Chief Athletic Department Compliance Officer, with responsibility for Manhattan's adherence to NCAA Division I, MAAC and college regulations. She began her service at Manhattan as Athletic Department Ticket Manager, serving in that capacity from 1993 to 2003.

In her time at Manhattan, she served on numerous NCAA, conference and internal college committees, including service on the NCAA Division I Management Council from 2004 to 2007 and as chair of the NCAA Women's Lacrosse Committee from 2002 to 2006.

At the conference level, she chaired the MAAC Women's Basketball Committee from 1997 to 2009 and also served on four other sport committees, as well as on the MAAC Committee on Athletic Administration, with service as vice-chair in 2008-09.

Internally at Manhattan, her assignments included service on the Middle States Review in 2000 and on the NCAA Certification Committee.

Sandra and her husband, Ken, who is Associate Commissioner for Men's Basketball and Baseball at the MAAC, reside in Monroe Township, NJ, with their daughters, Katherine, who was born in May 2004, and Samantha, who was born in July 2009.



**Mike Spisto, Eligibility Certification Officer/Academic Advisor for Athletics**

Mike Spisto moved to administration as NJIT's Eligibility Certification Office/ Academic Adviser for Athletics in the Spring of 2013, working in the Center for Academic and Personal Enrichment (CAPE), now named

The Learning Center.

For the previous five years, he was the top assistant coach on the men's basketball staff, working with head coach Jim Engles in an association that culminated with the Highlanders capturing the 2013

regular season championship of the Great West Conference.

In addition to 14 years college coaching—five at NJIT—he served as Director of Athletics at the State University of New York at Delhi in the two years before he joined Engles' coaching staff with the Highlanders.

He had two stints as head coach at SUNY at Delhi sandwiched around three years as a Division I assistant with Rider and Albany (NY). He began his coaching career with two years as an assistant at his alma mater, Division III SUNY Oneonta.

At Delhi, which is also an alma mater, he was head coach from 1999 to 2001, left to become a Division I assistant and then returned for another two-year stint as head coach from 2004 to 2006 before becoming AD at Delhi.

His head coaching record in four years at SUNY Delhi was 86-31 and both stints included championships and coaching awards. His first Division I coaching assignment came at Rider University in 2001-02, where he worked alongside Jim Engles as an assistant when Rider captured its first-ever Metro Atlantic Athletic Conference regular season championship.

Heading to the University at Albany (NY), he helped recruit the team that would win back-to-back America East Conference championships.

Spisto's coaching career began at Oneonta State following his 1997 graduation. In addition to his bachelor's degree from Oneonta, he earned an associate's degree from SUNY Delhi, as well as an MSS from United States Sports Academy.

He played at both Delhi and Oneonta and was all-region twice at Delhi, where he is the career assists leader. At Oneonta he was captain as a senior after winning an ECAC title his junior year.

Mike and his wife, Katie-Lynn, reside in Staten Island, NY, with their young children: sons Michael (9) and Christopher (6), and daughter Alyssa (2).

# Remembering Joe Caiola



On June 29, 2014, NJIT athletics lost one of its top administrators, Assistant Director of Athletics Joe Caiola, who passed away unexpectedly at the age of 57 in Fort Myers, Florida.

As hard-working and vital a contributor as he was the department's day-to-day operation, more important to the many that knew him was the way Joe touched so many lives with his warm personality and kind spirit.

Born in Newark on February 16, 1957, Joe Caiola earned two degrees from NJIT, a Bachelor of Science, cum laude, with a major in engineering technology in 1980, and a Master of Science in Management in 1984. He previously earned an Associate in Applied Science in 1978 from Brookdale Community College (Lincroft, NJ) in 1978.

While he was an undergraduate at NJIT, Caiola was a two-year member of the men's basketball team. In his final college game on February 29, 1980, Joe exploded for a career-high 40 points against Concordia of New York. In addition to being Joe's personal career-best, that 40-point total is sixth on the all-time list for the Highlanders, who have fielded intercollegiate basketball teams since 1922.

Upon graduation from NJIT, Caiola embarked on a career in marketing and management in technical staff augmentation and contract engineering services. He held that position full-time for over a decade and later began working as a developer of single-family homes.

However, sports remained a passion for Joe and, along with his full-time work, he became a part-time coach in boys basketball in the mid-1990s.

Not long after, he returned to NJIT as an assistant men's basketball coach in 1997 and soon added responsibilities as an Assistant Director of Athletics. Having spent 17 years on the staff at NJIT, he was the longest-tenured employee of the department among administrators and coaches. At the time of his passing, Joe held the title of Assistant Athletics Director for Business, Facilities, and Events Management.

In addition to his work for NJIT, he was active in youth basketball and baseball in Edison, NJ, his hometown for the last 29 years of his life.

An avid bike rider who, on more than one occasion, rode from Edison to Newark and back, a round-trip of nearly 50 miles, Joe also continued to play recreational basketball in his 50s and played every year in the annual NJIT Alumni basketball games, which he helped organize. He played

throughout the most recent alumni game, held in February 2014.

Joe Caiola was a special person, universally well-liked among his NJIT co-workers and his friendliness and his kind spirit were evident almost immediately when he met new people.

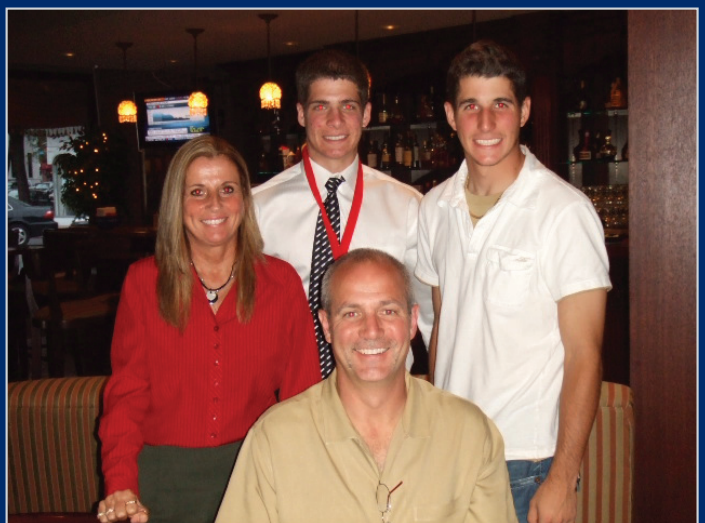
He enthusiastically took on new tasks on the job, no matter how difficult, and he was always the first to help others. Many a co-worker could tell personal stories of how Joe helped them in a time of need.

He worked especially closely with the Highlander baseball program and often traveled to the team's away games. He was the administrator-in-charge at several away Great West Conference baseball tournaments across the country and when NJIT hosted the 2013 Great West Conference Tournament, the last one for the GWC, he was Tournament Director, a post he also held when NJIT hosted previous baseball and soccer championship tournaments. Joe also accompanied other Highlander teams when they traveled to far away tournaments.

He is survived by his wife Carol and their two sons, Joe and Anthony. Both sons followed in their father's path, attending and graduating from NJIT. Joe, the elder of the Caiola brothers earned both bachelor's and master's degrees, while Anthony earned a bachelor's degree and played as member of the Highlanders baseball team for four years, completing his playing career in 2012.

His sons and their accomplishment were a special source of pride and joy for Joe. If you knew Joe well enough to speak to him regularly, you would hear news about all that his boys were doing as their lives progressed from high school all the way through college and entering the job market.

Joe is also survived by his parents, Nicholas and Filomena, and by his brother, Nicholas, Jr., in addition to numerous in-laws, nieces, nephews and cousins.





# Athletic Administration & Coaching Staff

## SENIOR ADMINISTRATION

Lenny Kaplan TBA	Director of Athletics Senior Associate Athletic Director
Alexis Schug	Director Associate Athletic Director/ Senior Women Administrator
Jayson Smikle	Assistant Athletic Director for Compliance
Tim Camp	Assistant Athletic Director for Sports Information
Mike Siegel	Faculty Athletic Representative Senior Women Administrator
Brian Callahan	Assistant Director of Physical Education

## ACADEMIC SUPPORT

Sandra Taylor	Director of The Learning Center; Academic Advisor Athletics
Mike Spisto	Eligibility Certification Officer/Academic Advisor for Athletics

## ATHLETIC TRAINING

Matt Koscs	Head Athletic Trainer
Paul Grayner	Assistant Athletic Trainer
Brittany Vorndran	Assistant Athletic Trainer
Melissa Mackey	Assistant Athletic Trainer
Kyle Tuohy	Assistant Athletic Trainer
Dr. Louis Rizio	Team Physician

## COMPLIANCE

Alexis Schug	Associate Athletic Director/ Senior Women Administrator
Jayson Smikle	Assistant Athletic Director for Compliance
Raquel Green	Compliance Coordinator

## DEVELOPMENT

Darlene Lamourt	Development Officer for Athletics
-----------------	--------------------------------------

## FLEISHER ATHLETIC CENTER

Shannon Abraham	Operations Manager
Jonathan Walker	Front Desk
Danielle Dundas	Receptionist

## SPORTS INFORMATION

Tim Camp	Assistant Athletic Director for Sports Information
Stephanie Pillari	Assistant Sports Information Director
Courtney Caden	Assistant Sports Information Director

## STRENGTH AND CONDITIONING

Bobby Fisk	Head Strength and Conditioning Coach
Drew Culp	Assistant Strength and Conditioning Coach

## COACHING STAFF DIRECTORY

### BASEBALL

Brian Guiliana	Head Coach
Robbie McClellan	Assistant Coach
Grant Neary	Assistant Coach

### MEN'S BASKETBALL

Jim Engles	Head Coach
Brian Kennedy	Assistant Coach
Jesse Agel	Assistant Coach
Dino Presley	Assistant Coach
Jared Czech	Director of Basketball Operations

### WOMEN'S BASKETBALL

Steve Lanpher	Head Coach
Mark McCaleb	Assistant Coach
LaKea Jones	Assistant Coach
Epiphany Smith	Assistant Coach

### MEN'S & WOMEN'S CROSS COUNTRY

Al Alonso	Head Coach
John Crawford	Assistant Coach

### MEN'S AND WOMEN'S FENCING

Yefim Litvan	Head Coach
Jason Henderson	Assistant Coach
Henry Kennard	Assistant Coach
Danielle Henderson	Assistant Coach

### MEN'S SOCCER

Didier Orellana	Head Coach
David Janezic	Assistant Coach
Evan Brandsdorfer	Assistant Coach
Chris Condron	Volunteer Assistant

### WOMEN'S SOCCER

Mandi Ridsen	Head Coach
Scott Waddell	Assistant Coach
Tim Verschuren	Volunteer Coach

### MEN'S SWIMMING & DIVING

Michael Lawson	Head Coach
Mark Albright	Assistant Coach
Shawn Bryan	Assistant Coach
Anthony Cacella	Volunteer Diving Coach

### MEN'S AND WOMEN'S TENNIS

Ira Miller	Head Coach
Livia Gherman	Assistant Coach

### MEN'S AND WOMEN'S TRACK AND FIELD (INDOOR & OUTDOOR)

Al Alonso	Head Coach
John Crawford	Assistant Coach
Robert Willmott	Volunteer Coach

### MEN'S VOLLEYBALL

Danny Goncalves	Head Coach
Brennon Dyer	Assistant Coach

### WOMEN'S VOLLEYBALL

Pete Volkert	Head Coach
Ariel Scott	Assistant Coach
Anthony Valbrun	Assistant Coach
Alicja Pawelec	Volunteer Coach

# NJIT & NCAA Division I



*Jenny Cisló*

**Beginning on September 1, 2009, the entire NJIT athletics program officially gained across-the-board active membership in NCAA Division I, completing a process that began officially in 2003.**

**NJIT, its teams and student-athletes enjoy the full benefits of Division I membership, including eligibility for Division I postseason championship competition and the inclusion of the Highlanders among the national Division I leaders in statistics maintained by the NCAA.**

Within months of NJIT's active Division I membership, the school won its first national Division I statistical championships, as women's volleyball players Sabrina Baby led the nation in digs per set and her teammates captured the team crown for digs, as well.

The NCAA's decision to make NJIT a full member of Division I completed a specific timetable that required NJIT and its Department of Athletics to meet a series of annual benchmarks before proceeding to the next step in the process.

NJIT, which competed in NCAA Division II beginning in 1997-98 and in NCAA Division III for more than two decades before that, made its first formal move toward Division I reclassification with men's soccer paving the way in 2003. That move grew out of November 2002 meetings among then-President Robert A. Altenkirch, then Vice President Joel Bloom (who would later succeed Altenkirch as NJIT's President) and Director of Athletics Lenny Kaplan. From there came a proposal for Dr. Altenkirch to the Board of Trustees, which unanimously approved in February 2003 a plan to reclassify men's soccer to Division I. Little more than two years later, the NCAA approved NJIT's proposal to begin advancing its entire program to Division I.

Men's soccer achieved active Division I status in 2005 and NJIT women's soccer



# NJIT & NCAA Division I

became postseason-eligible in 2007. The remaining programs also began reclassifying in 2005, with active status taking longer for an entire athletics program than under the single-sport- per-gender track used for the two soccer programs.

In 2005-06 the lion's share of the competition for all but the men's soccer program came at the Division II level. In 2006-07, 2007-08, and 2008-09, NJIT's teams competed at the Division I level and fully complied with NCAA Division I rules, but were not eligible for championships at the top level.

Every facet of the program has been enhanced in the move to Division I with a

special emphasis placed on student-athlete welfare. Facility upgrades have gone along with sports medicine staff expansion, a strength and conditioning program, and academic enrichment. NJIT has built a model NCAA Division I rules compliance regimen within its athletics program and across the entire university.

Further, the Board of Trustees embraced the transition to Division I as part of the University's strategic plan to enhance the quality of campus life for all students as NJIT makes the transition to being a residential university.

NJIT's teams have competed throughout the United States, taking on opponents from schools that are instantly recognizable for their stature in academics and athletics.

NJIT student-athletes have faced opponents every Ivy League institution, as well as the Patriot League, including Army and Navy, Buckell, Lafayette, and Lehigh.

The Highlanders have also competed against teams from every Division I conference with teams either in the Northeast or Mid-Atlantic States, including the America East, American Athletic, Atlantic 10, Big East, Colonial Athletic Association, Metro Atlantic Athletic, Mid-Eastern Athletic, and Northeast.

The eighth New Jersey-based institution in Division I, NJIT has competed against all



*Larissa Beer*

seven of its home state peers, including Rutgers and Seton Hall.

In addition, Highlander teams have taken on squads from power conferences such as the ACC, Big Ten, Big 12, and Pac-12.

Two high-profile opponents, Maryland in men's soccer in 2005 and Penn State in men's volleyball in 2008, won national championships following the same regular seasons in which they faced NJIT.

NJIT joined its first Division I conference in 2009-10 when the Great West became an all-sports conference and women's tennis captured back-to-back league titles in 2011 and 2012. In 2012-13, the final year of the GWC, NJIT men's basketball was regular season champion and NJIT

women's basketball was GWC Tournament champion.

Moving on from the Great West, NJIT women's tennis joined the America East Conference in 2013-14 and finished as conference runner-up in 2014, the Highlanders' first try at the AEC title. NJIT men's soccer began play as a member of the Sun Belt Conference in 2014, with the Sun Belt champion earning an automatic qualifying berth in the Division I College Cup field.

Also in 2013-14, NJIT men's swimming became one of three new members in the Coastal Collegiate Swimming Association (CCSA), a 15-member Division I association.



*Abi Fakolujo*



# Athletics Facilities

**The New Jersey Institute of Technology teams play home games and practice in a combination of facilities on campus and off.**

**The on-campus facilities include Lubetkin Field at Mal Simon Stadium for outdoor sports and the Estelle and Zoom Fleisher Athletic Center for indoor sports. In addition, NJIT in 2011 opened is the Naimoli Family Athletic and Recreational Facility, a multi-purpose indoor facility on the site of the former outdoor tennis courts.**

**Off-campus venues include Bears and Eagles Riverfront Stadium, a professional minor league stadium that is the home of NJIT baseball; the Prudential Center, home of the NHL Devils and NBA Nets, which has hosted selected NJIT basketball games; and, Branch Brook Park in Newark and Van Cortlandt Park in the Bronx, home sites for NJIT cross country. All except for Van Cortlandt Park are less than two miles from the NJIT campus.**

## Lubetkin Field at Mal Simon Stadium

The men's and women's soccer teams play their home games and practice on campus at Lubetkin Field at Mal Simon Stadium, a first-class venue for college soccer.

The field on the west end of NJIT's University Heights campus is an all-weather facility, with 24/7 availability for competition or practice. Outfitted with SprinTurf artificial grass in the summer of 2004, Lubetkin Field at Mal Simon Stadium also includes lighting for night contests, bleacher seating for more than 1,200 spectators, a press box and scoreboard.

The fully-enclosed facility, with its entrance a few feet opposite the entrance of the indoor Estelle and Zoom Fleisher Athletic Center, can take its place alongside any college soccer facility in the Northeast.

The home of Highlanders soccer served as the host site for the first-ever Great West Conference women's soccer championship tournament in November 2009. Previously, NJIT hosted the three-day 2005 ECAC Division II women's soccer championship tournament.

In the fall of 2005, when the Northeast was hit with record rainfall, games went on without a hitch at Lubetkin Field, thanks to the quality of the surface. Indeed, with the rain disrupting schedules around the region, some crucial Big East contests involving Seton Hall were moved to NJIT's home field. Those games, too, went off without a hitch.



*Lubetkin Field at Mal Simon Stadium*

## Estelle and Zoom Fleisher Athletic Center

The NJIT men's and women's basketball teams and men's and women's volleyball teams play their home games in the Fleisher Athletic Center gymnasium, while the swimming and diving team competes and practices in building's pool. The Fleisher Center also houses intercollegiate fencing, as well as all athletic department offices, varsity and general weight and fitness rooms, and the athletic training room.

In the summer of 2006, the gym underwent renovation to include installation of a new floor and baskets, new lighting, new sound system and new scoreboards, along with entirely new seating for approximately 1,500 spectators after the first phase of renovation. The back bay 'C gym' can be sectioned off from the main competition floor, making the facility useful for intramurals, physical education classes and campus recreation time, while being able to host multiple simultaneous events.

A six-lane swimming pool in Fleisher Athletic Center is home to the NJIT swimming team. Fencing has its own area on the second floor of the building.

In addition to all athletic department offices, the Fleisher Athletic Center also houses the sports medicine staff in the Athletic Training Room and the varsity weight room, supervised by the head strength and condition coach. The building's third floor is home to a fitness center, which is open for use by all students and staff.



*Soccer locker room at Estelle and Zoom Fleisher Athletic Center*





# Athletics Facilities

## The Naimoli Family Athletic & Recreation Facility

Opened in 2011, the facility is approximately 25,600 square feet. The Naimoli Family Center will be a multi-purpose space for athletics, community recreation, and gatherings involving large numbers of people.

Built on top of the old outdoor tennis courts adjoining the Fleisher Athletic Center, construction of this new building has been made possible, in part, by a generous gift from Vincent Naimoli '62, Chairman and CEO of Anchor Industries International and Chairman Emeritus/Founder of the Tampa Bay Rays major league baseball team.

The facility houses courts for tennis and is available for other athletic and recreational activities, including practice for basketball and volleyball. It is heated and air conditioned, with flooring appropriate for the intended athletics and recreational activities.

Its indoor tennis courts offer vital year round practice and playing opportunities for NJIT's intercollegiate tennis teams, which have been consistently successful in the transition to Division I. In 2011, the women's tennis team became NJIT's first conference championship team in the Division I era.



*The Naimoli Family Athletic & Recreation Facility*

## Branch Brook Park and Van Cortlandt Park

A hallmark of the NJIT cross country program under veteran coach Al Alonso is its ability to host cross country competition that have made Highlander-sponsored races a popular destination for schools from throughout the New York/New Jersey area.

In 2009, NJIT hosted the Great West Conference championships at Van Cortlandt Park in the Bronx, and the course, which is home to some of the most prestigious events in the sport, is also the home venue for other annual NJIT-hosted races. Branch Brook Park, which is a public park of Essex County, reaches into several towns, including Newark, with the park entrance less than a mile from the NJIT campus.



*NJIT Athletics Weight Room at Estelle and Zoom Fleisher Athletic Center*

## Track Facilities

The NJIT men's and women's indoor track & field team trains at the Jersey City Armory which is home to a 6-lane indoor 200m track while the outdoor track & field team trains at the Nat Turner Park 6-lane outdoor 400m track.





## Prudential Center

In October 2007, the Prudential Center ushered in a new era in sports and entertainment in Newark and the entire northern New Jersey area.

Prudential Center is the cornerstone in the revitalization and renaissance of downtown Newark. In addition to the arena, Newark will soon add scores of condominiums, restaurants, themed bars and mixed retail establishments. Prudential Center, one of the finest arenas in the country, is New Jersey's home for hockey, basketball, concerts and numerous other events.

A public/private partnership between the City of Newark and Devils Arena Entertainment made the \$375 million Prudential Center a reality that is changing the face of downtown Newark and making it a destination place for sports and live entertainment in the region.

"The Rock" is located about a mile from NJIT's University Heights campus and is known best as the home of the National Hockey League New Jersey Devils and the former home of the National Basketball Association New Jersey Nets.

The arrival of the spectacular Prudential Center nearly coincided with NJIT's arrival as an NCAA Division I institution--the first in Newark and the newest in New Jersey in more than 20 years. The Rock opened one year after NJIT began Division I competition as part of its NCAA reclassification which is now complete.

In the arena's inaugural year, NJIT played host to six basketball games on four dates, including four men's basketball games and two women's games. Included was the first women's basketball game in the building's history, when the Highlanders entertained Cornell on January 15, 2008.

The Highlanders hosted additional basketball games in subsequent years and have played there each year of the building's existence. Further, NJIT's club ice hockey team plays all of its home games

in the full-size Devils practice rink facility (AmeriHealth Pavilion), which adjoins the main arena and has an 800-seat capacity. And one of the special events held in the main arena is NJIT's annual commencement.

# Athletics Facilities

## Bears and Eagles Riverfront Stadium: Home of the NJIT Highlanders

Joe Torre, then the manager of the New York Yankees, visited New Jersey Institute of Technology on December 8, 2005 to herald a new partnership between NJIT's baseball team, the Highlanders, and Newark professional baseball.

Torre was on hand as the Highlanders signed a 10-year contract to play their home games at Bears & Eagles Riverfront Stadium in Newark.

"I think this partnership is nothing but aces," Torre said during a press conference at NJIT. "It's a partnership between two class organizations that will make for nothing but a lot of fun for everyone."

For the previous two years, the Highlanders played their home games at the stadium. But the team's longer-term commitment to play at the stadium came as NJIT elevated its baseball program to Division I.

"NJIT is bringing Division I baseball to this great stadium," said NJIT President Robert A. Altenkirch, "which will generate the highest level of

excitement. It's a great partnership that allows NJIT to play intercollegiate baseball in a great facility, maybe the best for college baseball in the country."

Bears and Eagles Riverfront Stadium, the \$30 million state-of-the-art home of professional baseball in Newark, officially opened to the public on July 16, 1999.

With a seating capacity of 6,200 Bears and Eagles Riverfront Stadium affords everyone in attendance an up-close view of the action. The ballpark also has 20 luxury suites, a picnic area, a party deck, a concert stage situated behind the outfield wall and a major league-caliber press box featuring two radio booths and two television booths.

The name, Bears and Eagles Riverfront Stadium, honors Newark's rich baseball history. The original Bears were a farm team for the New York Yankees up until 1949 and the Eagles were a very successful Negro League team that played in Newark until 1950.

*Bears and Eagles Riverfront Stadium*





# About Newark



## Newark: The Renaissance City

NJIT is located in the heart of New Jersey's largest city, Newark, with a population of over 300,000, making it the 65th-largest city in the United States. A major urban center, Newark is a city on the move.

Attractions in Newark include:

- The Prudential Center, a major indoor entertainment and sports venue housing New Jersey Devils hockey and major concerts and other premier events
- New Jersey Performing Arts Center
- The Newark Museum
- The Newark Public Library
- Symphony Hall
- Branch Brook Park
- Art galleries, restaurants, shopping
- The Ironbound neighborhood, renowned for its dining and vibrant nightlife
- An urban architectural laboratory
- Professional minor league baseball



## Newark: New Jersey's College Town

Some 30,000 undergraduate, graduate, and professional students attend classes in the University Heights section, which is home to NJIT, Rutgers-Newark, Rutgers Biomedical and Health Services, and Essex County College.

Adjacent to NJIT to the east, is the Newark campus of Rutgers University and the two schools enjoy an exceptionally close and productive relationship. NJIT and Rutgers students have library privileges at both campuses. NJIT students may also enrich their educational experience by enrolling in Rutgers-Newark courses and in full degree programs in disciplines not offered by NJIT, such as art, music, geology, and psychology.

Each year, the two universities co-sponsor a common season of theatrical productions, as well as 'World Week', a joint program of honors colloquia, and a variety of other cultural and social activities.

NJIT also enjoys a cooperative relationship with its neighbor to the west in the University Heights area, UMDNJ, with several joint degree programs.



## New Jersey/New York Metropolitan Region

NJIT and Newark are a part of a region that is a magnet not only to the rest of the United States, but also to the world.

In Newark and neighboring northern New Jersey alone, attractions such as the Prudential Center, New Jersey Performing Arts Center, Meadowlands Sports Complex, Red Bull Arena, Liberty Science Center, and numerous others are minutes away by car and in most cases accessible by public transportation. Literally dozens of shopping malls are within a 20-minute drive of Newark, as well.

Midtown Manhattan, with all that it and the rest of New York City offer, is less than 15 miles from the NJIT campus.

NJIT students have regular access to discount tickets for Broadway shows, museums, concerts, and sporting events.

The school also sponsors weekend trips throughout the northeastern United States, with activities such as skiing, boating, swimming, hiking, and more.

The spectacular Jersey shore is less than an hour away by car and winter sports are within a couple of hours drive to the west and north.



# Sports & Entertainment Around Newark

**NJIT, with its campus in Newark, NJ, sits in a region that abounds with major professional sports unlike any other in the United States and perhaps in the world. There are nine teams in the major professional leagues (MLB, NFL, NBA, and NHL) located in New York City, northern New Jersey and Long Island.**

**Only one of nine major teams is more than 25 miles from Newark, but most, including MetLife Stadium (Giants and Jets NFL football), Madison Square Garden (NBA Knicks, NHL Rangers), are much closer.**

**The three closest professional sports venues (listed below) are within three miles of NJIT's campus and can be accessed in a matter of minutes at low cost by public transportation, beginning with Newark Light Rail, from campus.**

## Prudential Center

The home of the National Hockey League New Jersey Devils is in downtown Newark at the corner of Mulberry and Edison streets, about one mile from the NJIT's University Heights campus.

Opened in October 2007, 'The Rock' is the centerpiece of the city's Downtown Core Redevelopment Project. In addition to NHL hockey, it has hosted numerous entertainment and sporting events, including NJIT basketball.

NJIT played basketball in the Rock in the inaugural year and in each year since. Indeed, NJIT hosted the first women's basketball game ever played in the Prudential Center on January 15, 2008 (NJIT vs. Cornell).

The arena, with full-capacity seating for 18,500 spectators, features a 4,800 square-foot exterior LED screen, as well as the latest in ice-surface technology and a gourmet restaurant overlooking the ice for Devils games. The building contains 850,000 square feet of space, 9,000 tons of steel, eight million pounds of structural steel and 25,000 cubic yards of concrete.



# Sports & Entertainment Around Newark



## Red Bull Arena

Located in Harrison, NJ, just across the Passaic River from Newark and less than three miles from the NJIT campus, the new home of the New York Red Bulls (opened in March 2010) sets the standard for soccer venues across North America.

The state-of-the-art soccer-specific facility is a major component of a multi-billion dollar development.

Red Bull Arena has a number of key design elements which give its seating bowl a close-to-the-action feeling and the unique stadium roof design extends from its leading edge over the entire seating bowl and then curve down to the concourse.

The overall seating capacity for soccer is 25,000, including 30 luxury suites (20 lower level and 10 upper level) and 1,116 club seats. Other amenities include three stadium clubs and two retail outlets.



## Bears and Eagles Riverfront Stadium

Bears and Eagles Riverfront Stadium, the \$30 million state-of-the-art home of professional baseball and, since 2004, the home of NJIT Highlanders baseball, officially opened to the public on July 16, 1999. With a seating capacity of 6,200, "The Den" affords fans an up-close view of the action. The ballpark also has 20 luxury suites, a picnic area, a party deck, a concert stage situated behind the outfield wall and a major league-caliber press box.

In December 2005, NJIT and the Bears held a joint press conference to herald a new partnership that includes a 10-year deal that extends Bears and Eagles Riverfront Stadium as the home of NJIT Highlanders baseball.



## 2014 Roster

NO.	NAME	YR.	HT.	POS.	HOMETOWN/HIGH SCHOOL
0	Larissa Beer	Jr.	5-9	GK	London, Ontario, Canada / St. Thomas Aquinas (London, Ontario)
00	Karen David	So.	5-9	GK	Aberdeen, NJ / Biotechnology
1	Samantha Bersett	Jr.	5-9	GK	Wildwood, MO / Cor Jesu Academy (St. Louis, MO)
2	Megan Dellavalle	Sr.	5-3	F	Santa Rosa, CA / Montgomery
3	Dana Schules	So.	5-3	MF	Blackwood, NJ / Triton Regional
4	Carly Berdan	So.	5-5	F	Woodland Park, NJ / Passaic Valley
6	Rebecca Tustin	Sr.	5-7	F	Haddon Heights, NJ / Haddon Heights
7	Danielle Pierce	Jr.	5-9	D	Ajax, Ontario, Canada / Archbishop Denis O'Connor Catholic
8	Kylie Jones	Sr.	5-7	MF	Cheshire, England / Ellesmere Port Catholic
9	Brittany Goulart	So.	5-5	M	Canyon Lake, CA / Temescal Canyon
10	Julia Keebaugh	So.	5-1	D	York Haven, PA / Red Land
11	Kaelyn Gamel	Jr.	5-4	F/MF	Hamburg, NY / Hamburg
14	Madeline Griep	Jr.	5-4	MF/F	Burlington, Ontario, Canada / Nelson
16	Jenny Cislo	Sr.	5-7	D	Crownsville, MD / Old Mill Senior
19	Abi Fakolujo	Jr.	5-5	F	Magnolia, NJ / Triton Regional
21	Alex Adam	Jr.	5-6	MF	Centereach, NY / Centereach
22	Grace Seely	Sr.	5-5	B	London, England / Bexley Grammar School
23	Jamee Simone	So.	5-7	D	Berlin, NJ / Eastern Regional
25	Jaclyn Ward	Jr.	5-4	D	Pasadena, MD / Chesapeake
31	Amelia Sapirman	Fr.	5-7	GK	Bethlehem, PA / Liberty





## Seniors



## Juniors



## Sophomores



## Freshman



## Goalkeepers



## Head Coach Mandi Ridsen



On the NJIT coaching staff as an assistant beginning in 2008, Mandi Ridsen was promoted to head coach in April 2013.

In her first season at the helm, Ridsen guided the 2013 Highlanders to the most wins (8) and the most shutouts (6), since the program began Division I competition with the 2006 seasons.

Ridsen has coached at three different NCAA

Division I programs, including NJIT, since 2000.

She had twice served as interim head coach of the Highlanders, leading the program for five months in the 2010-11 offseason and again in 2013 from the March resignation of Sergio Gonzalez, who stepped down from his position as NJIT head coach to become an assistant coach at Indiana University in the Big Ten Conference.

In Ridsen's first season in charge, she earned 2013 Independent Coach of the Year honors from the website College Sports Madness for her work in NJIT's 8-10-1 record with six shutouts. The previous Division I high for wins was 7 when the Highlanders were 7-9-2 in 2009.

The 2013 squad also matched the overall program record for wins. Started as a Division III program in 1996, NJIT played in Division II from 1997 to 2005, posting an 8-6-3 mark the final season in Division II.

Ridsen, who earned a bachelor's degree at Auburn University and a master's degree at Drexel University, first coached at the Division I level from 2000 to 2004 as an assistant/goalkeeper coach at Rutgers University. The Scarlet Knights reached the 2003 NCAA College Cup Sweet 16 and the second round of the 2001 NCAA College Cup in her time

at Rutgers, which ranked 14th in the final NSCAA Division I poll in 2001.

From Rutgers, Ridsen moved to Brown University in the Ivy League, where she was an assistant/goalkeeper coach with the women's program from 2004 to 2008.

Coming to NJIT, she was the lead assistant under then-head coach Kevin Leacock from 2008 to November 2010. In 2009, NJIT finished in first place in the Eastern Division of the Great West Conference with a 4-1-1 league mark that was part of a then-program Division I-best 7-9-2 overall record.

Ridsen was interim head coach from November 2010, when Leacock stepped down, to March 2011, when Gonzalez was hired to lead the program after a highly-successful stint as an assistant at Dayton.

Ridsen remained at NJIT as the top assistant for Gonzalez and she was re-appointed as the interim head coach when Gonzalez left for Indiana.

"I would like to thank Lenny and the rest of the administration for this tremendous opportunity," the new head coach said. "I am extremely grateful and excited to continue being a part of the NJIT Women's Soccer Program. I look forward to building on the foundation that has been set over the past few years and to helping the program continue to reach new levels of success."

In addition to her 13 years as an NCAA Division I assistant coach, Ridsen was a four-year goalkeeper in a career at two Division I programs (Clemson, 1994-96; and Auburn, 1997). At Auburn, she was team captain and a scholar-athlete award winner. At Clemson, she played on three teams that competed in the Division I Women's College Cup Tournament and finished ranked in the National Top 15 in each of her three seasons (13th in 1994, 15th in 1995, and 11th in 1996).

She resides in Matawan, NJ.







## Assistant Coach Scott Waddell



Scott Waddell joined the NJIT women's soccer coaching staff in Spring 2014, coming on as an assistant coach after four seasons at Columbia University.

A former captain on the Columbia University men's soccer team, Waddell began his college coaching career in 2010 with the Columbia women's soccer staff.

Waddell, a four-year player with the Columbia Lions, played

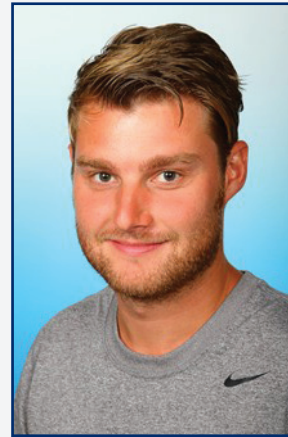
professionally for Pulau Penang FC (2008) and Real Mona FC (2009).

He is the director at the NYC Soccer Academy and assistant coach of the U17 ENYSSA Olympic Development Program in New York. He served as head coach from 2008-2009 for the Elmont Rush Girls U13 soccer club.

A graduate from Columbia University, Waddell graduated with a bachelor degree in political science.

Scott currently holds a NSCAA National Diploma and US Soccer USSF "C" License. He resides in New York, NY.

## Volunteer Assistant Tim Verschuren



A native of the Netherlands, Tim Verschuren joined the NJIT women's soccer coaching staff in August 2013.

He is a graduate of University of The Hague (Haagse Hogeschool), in his home country, where he received a bachelor's degree in Sports Management in 2009.

Tim, who came to the United States in 2009, works for the

New Jersey Soccer Group in Morris Plains, NJ, coaching multiple youth teams from U8 to U18 and serves as the head coach of the Morris United STA.

Tim holds a KNVB (Royal Dutch Football Association) for UEFA "C" license, NSCAA National Diploma and NSCAA Advanced National Diploma.

# 2013 Statistics and Results

<b>RECORD:</b>	<b>OVERALL</b>	<b>HOME</b>	<b>AWAY</b>	<b>NEUTRAL</b>
ALL GAMES	8-10-1	4-4-1	4-6	0-0
CONFERENCE	0-0	0-0	0-0	0-0
NON-CONFERENCE	8-10-1	4-4-1	4-6	0-0

Date	Opponent		Score	Att.	#	Player	gp	g	a	pts	sh	sh%	sog	sog%	gw	pk-att
Aug 23	TEMPLE	L	0-2	300	6	Rebecca Tustin	19	3	3	9	13	.231	9	.692	1	0-0
Aug 25	RHODE ISLAND	L	0-3	305	4	Carly Berdan	19	3	1	7	22	.136	9	.409	2	0-0
Aug 29	at Saint Peter's	w	3-2	125	19	Abi Fakolujo	18	3	0	6	8	.375	6	.750	2	0-0
Sep 01	at Stony Brook	L	1-2	139	2	Megan Dellavalle	17	2	2	6	10	.200	7	.700	2	0-0
Sept 5	at Monmouth	L	0-3	275	11	Kaelyn Gamel	19	2	1	5	16	.125	10	.625	0	0-0
Sep 08	LAFAYETTE	L	0-2	481	13	Camille Billing	7	2	0	4	3	.667	2	.667	1	0-0
Sep 13	VMI	w	1-0	366	14	Madeline Griep	19	1	2	4	17	.059	9	.529	0	0-1
Sep 15	RIDER	w	2-0	300	16	Jenny Cislo	19	1	1	3	13	.077	6	.462	0	0-0
Sep 20	at Wagner	L	0-4	312	20	Dana Schules	19	1	0	2	9	.111	3	.333	0	0-0
Sep 22	at Cornell	L	0-4	138	8	Kylie Jones	11	1	0	2	9	.111	4	.444	0	0-0
Sep 27	at Duquesne	L	0-3	218	23	Jamee Simone	19	0	2	2	4	.000	2	.500	0	0-0
Oct 04	at Delaware State	w	3-0	123	17	Amanda Redden	17	0	1	1	10	.000	3	.300	0	0-0
Oct 08	at Columbia	L	0-2	100	10	Julia Keebaugh	9	0	1	1	0	.000	0	.000	0	0-0
Oct 13	SOUTH CAROLINA STATE	w	3-1	300	21	Alex Adam	16	0	0	0	8	.000	2	.250	0	0-0
Oct 19	at South Carolina State	w	1-0	98	9	Brittany Goulart	13	0	0	0	4	.000	2	.500	0	0-0
Oct 22	PENN	L	0-2	200	25	Jaclyn Ward	18	0	0	0	3	.000	1	.333	0	0-0
Oct 27	at Howard	w	1-0	100	26	Courtney McHugh	4	0	0	0	1	.000	1	1.000	0	0-0
Nov 1	HOWARD	To2	1-1	613	24	Catherine Andrus	2	0	0	0	1	.000	1	1.000	0	0-0
Nov 06	DELAWARE STATE	w	3-0	419	7	Danielle Pierce	13	0	0	0	1	.000	0	.000	0	0-0

## TEAM STATISTICS NJIT OPP

<b>SHOT STATISTICS</b>		
Goals-Shot attempts	19-152	31-239
Goals scored per game	1.00	1.63
Shot pct.	.125	.130
Shots on goal-Attempts	77-152	127-239
SOG pct.	.507	.531
Shots/Game	8.0	12.6
CORNER KICKS	60	83
PENALTY KICKS	0-1	1-1
<b>PENALTIES</b>		
Yellow cards	5	5
Red cards	0	0
<b>ATTENDANCE</b>		
Total	3284	1628
Dates/Avg Per Date	9/365	10/163
Neutral Site #/Avg	0/0	

#	Goalie	GP	Min.	GA	GAAvg	Saves	Pct	W-L-T	Sho
1	Samantha Bersett	19	1730:00	31	1.61	95	.754	8-10-1	6/0
	Total	19	1730:00	31	1.61	96	.756	8-10-1	6
	Opponents	19	1730:00	19	0.99	58	.753	10-8-1	9

## Goals by Period

	1st	2nd	OT	OT2	Total
NJIT	11	8	0	0	19
Opponents	14	17	0	0	31

## Shots by Period

	1st	2nd	OT	OT2	Total
NJIT	70	79	2	1	152
Opponents	117	120	1	1	239

## Saves by Period

	1st	2nd	OT	OT2	Total
NJIT	46	50	0	0	96
Opponents	22	35	0	1	58

## Corners by Period

	1st	2nd	OT	OT2	Total
NJIT	22	37	0	1	60
Opponents	38	45	0	0	83

## Fouls by Period

	1st	2nd	OT	OT2	Total
NJIT	71	81	1	0	153
Opponents	66	82	0	0	148

## Records Book — School Records

**Most Goals—Career**

75	Meryl Hershfield	2009-12
74	Sadie Mele	2007-10
73	Kori Washington	2007-10
72	Cielianna Pasiciel	2008-11
	Christi Taylor	2007-10
	Erika Taugher	2004-08
70	Gechi Ukaegbu	2009-12
64	Erin Morris	2009-12
65	Erin Salgado	2002-05
62	Amanda Bayiokos	2004-07
	Briana Morales	2005-09
60	Katie DeRosa	2005-08

**Most Games – Season**

20	5 tied	2012
19	3 tied	2012
	9 tied	2011
	6 tied	2008
	6 tied	2007

**Most Games – Career**

16	Erika Taugher	2004-08
	Cathy Wasko	2001
	Erin Salgado	2002-05
12	Kori Washington	2007-10
	Karina Merchan	2001-02
10	Gechi Ukaegbu	2009-12
9	Jillian Misiunas	2002-04
8	Daisy Calderon	2000-01, 03
	Valerie DeAngelis	2000
7	Anna Tomczak	1999-2001
	Mary Caron	1998-99

**Most Goals – Season**

13	Cathy Wasko	2001
12	Karina Merchan	2001
8	Vallerie DeAngelis	2000
6	Erika Taugher	2004
	Erika Taugher	2005
5	Erin Salgado	2002
	Daisy Calderon	2001
	Anna Tomczak	2001
	Kori Washington	2007

**Most Goals – Game**

5	Cathy Wasko vs. Mt. St. Vincent,	9/7/01
4	Karina Merchan vs. St. Elizabeth,	10/15/01

**Most Assists – Career**

15	Erika Taugher	2004-08
10	Jayna Misiunas	2002-04
	Karina Merchan	2001-02
9	Cathy Wasko	2001
8	Anna Tomczak	1999-2001
	Meryl Hershfield	2009-12
7	Jillian Misiunas	2002-04
	Sarah Buchala	2001-04
	Erin Salgado	2002-05
5	Kori Washington	2007-10

**Most Assists – Season**

9	Cathy Wasko	2001
7	Karina Merchan	2001
6	Jayna Misiunas	2003
5	Erika Taugher	2004
	Sarah Buchala	2001

**Most Assists – Game**

4	Cathy Wasko vs. Mt. St. Vincent,	9/7/01
3	Erika Taugher vs. Wagner,	9/10/08

**Most Points – Career**

47	Erika Taugher	2004-08
35	Cathy Wasko	2001
34	Karina Merchan	2001-02
33	Erin Salgado	2002-05
29	Kori Washington	2007-10
27	Jillian Misiunas	2002-04
23	Gechi Ukaegbu	2009-12
22	Anna Tomczak	1999-2001
19	Vallerie DeAngelis	2000
17	Sarah Buchala	2001-04

**Most Points – Season**

35	Cathy Wasko	2001
31	Karina Merchan	2001
19	Vallerie DeAngelis	2000
17	Erika Taugher	2004
15	Erika Taugher	2005
13	Daisy Calderon	2001
	Anna Tomczak	2001
12	Kori Washington	2007
11	Erin Salgado	2002
	Jessi Wilkinson	2001

**Most Points – Game**

10	Cathy Wasko vs. Mt. St. Vincent,	9/7/01
8	Karina Merchan vs. St. Elizabeth,	10/15/01

**Most Shots – Season**

64	Cathy Wasko	2001
----	-------------	------

**Most Shots – Game**

15	Erin Salgado vs. Mt. St. Vincent,	10/17/02
----	-----------------------------------	----------

**Most Games as Goalkeeper – Career**

74	Sadie Mele	2007-10
39	Samantha Bersett	2012-present
38	Daisy Calderon	2000-01, 03

**Most Solo Shutouts – Season**

7	Bruna Lotufo	2005
6	Samantha Bersett	2013

**Most Saves – Career**

437	Sadie Mele	2007-10
296	Daisy Calderon	2000-01, 03

**Most Saves – Season**

167	Daisy Calderon	2000
155	Kate Crowley	1999
152	Kate Duncan	2002
140	Sadie Mele	2008

**Most Saves – Game**

15	Samantha Bersett vs. Utah Valley,	10/5/12
15	Bruna Lotufo vs. IPFW, 8/31/06	
	Ketsia Mesidor vs. Bridgeport,	9/17/97

**Most Goalkeeper Wins – Career**

17	Sadie Mele	2007-10
12	Samantha Bersett	2012-present
10	Daisy Calderon	2000-01, 03
9	Bruna Lotufo	2005-06
6	Joy Intasamakul	2001

**Most Goalkeeper Wins – Season**

8	Bruna Lotufo	2005
8	Samantha Bersett	2013
7	Sadie Mele	2009



# Records Book — School Records

## MISCELLANEOUS INDIVIDUAL RECORDS

### Most Hat Tricks, Career:

2, Cathy Wasko, 2001

### Most Hat Tricks, Season:

2, Cathy Wasko, 2001

### Most Game Winning Goals, Career:

3, Cathy Wasko, 2001 & Erika Taugher, 2004

### Most Game Winning Goals, Season:

3, Cathy Wasko, 2001 & Erika Taugher, 2004

### Fastest Two Goals:

1:23, Dinah Kotei at New Jersey City, 9/7/02

### Fastest Three Goals:

12:20, Cathy Wasko vs. CCNY, 10/1/01

### Longest Goal-Scoring Streak:

3, Cathy Wasko, 2001 and Jessi Wilkinson, 2001

### Longest Point-Scoring Streak:

3, five times

## TEAM RECORDS

### TEAM RECORDS

**Most Victories:** 8, 2005, 2013

**Fewest Losses:** 6, 2005

**Most Ties:** 3, 2005, 2012

**Best Winning Percentage:** .559, 2005

**Most Consecutive Victories:**

3, Oct. 18 to Oct. 25, 2009;

Sept. 28 to Oct. 5, 2005

**Most Consecutive Shutouts:** 3, 2005

**Most Goals, Game:**

9 vs. CCNY, 10/1/01

**Most Shots, Game:**

50 vs. Mount St. Vincent, 10/6/04

**Most Goals, Season:** 43, 2001

**Fewest Goals Allowed, Season:**

25, 2009

**Fastest Two Goals:**

0:47 at Delaware State

10/17/03 (Erin Salgado, Maura Finn)

**Fastest Three Goals:**

5:23 vs. CCNY

10/1/01 (Cathy Wasko 2, Karina Merchan)

**Fastest Goal From Start of Game:** 3:15 vs.

Mercy, 9/8/03 (Maura Finn)

## All-Time Coaching Records

YEAR	OVERALL RECORD	HEAD COACH	CONFERENCE	MVP	CAPTAINS
<i>NCAA Division III era (1 year)</i>					
1996	0-12	Dan Kilday	WIAC/IAC	Natalie Rodriguez	N/A
<i>NCAA Division II era (9 years)</i>					
1997	0-13	Ralph Choonoo	NYCAC (0-8/9th)	Janina Alvarez	N/A
1998	1-10	Jean Pierre	NYCAC (0-8/9th)	Natalie Rodriguez	N/A
1999	1-10	Tom Romano	NYCAC (0-9/10th)	Veta Obazenu	N/A
2000	3-13	Tom Romano	CACC (1-9/t10th)	Daisy Calderon	Ana Tomczak
2001	6-9	Tom Romano	CACC (1-8/t9th)	Cathy Wasko	Ana Tomczak
2002	4-13	Tom Romano	CACC (1-9/10th)	Erin Salgado	Sarah Buchala, Erin Salgado
2003	2-12-1	Tom Romano	CACC (1-9/t10th)	Lisa Kling	Sarah Buchala, Katie Duncan
2004	5-10-1	Alyssa Radu	CACC (2-7)	Katie Hepfinger	Sarah Buchala, Katie Duncan, Erin Salgado
2005	8-6-3	Alyssa Radu	CACC (7-2-2)	Amanda Bayiokos	Erin Salgado
<i>2005 Postseason: ECAC Division II Quarterfinal</i>					
<i>NCAA Division I era (7 years; ongoing)</i>					
2006	1-13-1	Alyssa Radu	Independent	Cynthia Bayiokos	Dena Baskous, Cynthia Bayiokos
2007	4-14-1	Alyssa Radu	USC (2-2-1)	Dena Baskous	Dena Baskous
2008	2-16-1	Kevin Leacock	USC (1-3-1)	Sadie Mele	Emma Vinski, Erika Taugher, Melissa Paul, Briana Morales
2009	7-9-2	Kevin Leacock	GWC (4-1-1/1st East)	Sadie Mele	Game Captains
2010	4-13-1	Kevin Leacock	GWC (3-3-0/2nd East)	Sadie Mele	Game Captains
2011	2-17-0	Sergio Gonzalez	GWC (1-5-0/7th)	N/A	Game Captains
2012	4-13-3	Sergio Gonzalez	GWC (2-3-0/4th)	Jenny Cislo	Game Captains
2013	8-10-1	Mandi Ridsen	N/A	Samantha Bersett	Game Captains

### Conference notes:

--For 1996 in NCAA Division III, NJIT held membership in both the WIAC (Women's Intercollegiate Athletic Conference) and IAC (Independent Athletic Conference; the IAC sponsored championship competition in sports for both genders).

--In 1997, moving to NCAA Division II, NJIT joined the New York Collegiate Athletic Conference, which later changed its name to the current East Coast Conference. NJIT moved from the NYCAC to the CACC (Central Atlantic Collegiate Conference) in 2000 and remained there until reclassifying to NCAA Division I.

--In 2006 (1st first year in NCAA Division I), NJIT was an independent. In 2007, NJIT was a founding member of the USC (United Soccer Conference), a one-sport alliance of programs that previously were independents. In 2009, when the GWC (Great West Conference) became a multi-sport league, it absorbed the USC, with those teams forming an Eastern Division in women's soccer (NJIT joined the GWC in multiple sports, while the other USC teams joined for women's soccer only). In 2011, the GWC dropped its divisional format for women's soccer.

# Division I Records

## Most Goals—Career

75	Meryl Hershfield	2009-12
74	Sadie Mele	2007-2010
73	Kori Washington	2007-2010
72	Cielianna Pasciel	2008-11
	Christi Taylor	2007-2010
	Amanda Redden	2010-13
70	Gechi Ukaegbu	2009-12
66	Mary Munoz	2007-2010
64	Erin Morris	2009-12
58	Jenny Cislo	2011-pres.

## Most Games – Season

20	5 tied	2012
19	7 tied	2013
	3 tied	2012
	9 tied	2011
	7 tied	2008

## Most Goals – Career

12	Kori Washington	2007-2010
10	Gechi Ukaegbu	2009-2012
5	Megan Dellavalle	2011-pres.
	Rebecca Tustin	2011-pres.
	Emma Vinski	2006-2008
4	Kylie Jones	2011-pres.
	Amanda Dotten	2009, 2010

(Note: Emma Vinski began her career in NJIT's Division II era. Totals and years listed in this section are for Division I competition only).

## Most Goals – Season

5	Kori Washington	2007
4	Amanda Dotten	2010
	Kori Washington	2009
3	3 tied	2013

## Most Assists – Career

8	Meryl Hershfield	2009-12
7	Erika Taugher	2006-2008
5	Kori Washington	2007-2010
	Madeline Griep	2012-pres.
4	Emma Vinski	2006-2008

(Note: Erika Taugher and Emma Vinski began their career in NJIT's Division II era; totals and years listed in this section are for Division I competition only)

## Most Assists – Season

4	Erika Taugher	2008
3	Rebecca Tustin	2013
3	Madeline Griep	2012
3	Piper Lunan	2010
	Meryl Hershfield	2010
3	Amanda Dotten	2009
3	Emma Vinski	2008
3	Erika Taugher	2007

## Most Points – Career

29	Kori Washington	2007-2010
23	Gechi Ukaegbu	2009-12
15	Amanda Dotten	2009, 2010
15	Erika Taugher	2006-2008
14	Emma Vinski	2006-2008
14	Rebecca Tustin	2010-pres.

(Note: Erika Taugher and Emma Vinski began their career in NJIT's Division II era; totals and years listed in this section are for Division I competition only)

## Most Points – Season

12	Kori Washington	2007
10	Kori Washington	2009
	Erika Taugher	2008
9	Rebecca Tustin	2013
8	Gechi Ukaegbu	2009
	Piper Lunan	
7	Carly Berdan	2013
	Gechi Ukaegbu	2012
	Amanda Dotten	2009
	Emma Vinski	2008
	Emma Vinski	2007

## Most Saves – Career

437	Sadie Mele	2007-2010
210	Samantha Bersett	2012-pres.
83	Bruna Lotufo	2006
69	Angelica Sepulveda	2006

(Note: Brunu Lotufo and Angelica Sepulveda began their careers in NJIT's Division II era. Totals and years listed in this section are for Division I competition only).

## Most Saves – Season

140	Sadie Mele	2008
123	Sadie Mele	2007
115	Samantha Bersett	2012
95	Samantha Bersett	2013
90	Sadie Mele	2010

## Most Shutouts – Season

7	Bruna Lotufo	2005
6	Samantha Bersett	2013
4	Samantha Bersett	2012
3	Sadie Mele	2009
	Sadie Mele	2007

## Most Shutouts – Career

10	Samantha Bersett	2012-pres.
9	Sadie Mele	2007-10

## TEAM RECORDS

**Most Victories:** 8, 2013  
**Fewest Losses:** 9, 2009  
**Most Ties:** 3, 2012  
**Best Winning Percentage:** .447 \* (8-10-1) 2013  
**Most Consecutive Victories:** 3, Oct. 18 to Oct. 25, 2009  
**Most Shutouts:** 6, 2013  
**Most Consecutive Shutouts:** 2, 2007 \* 2013  
**Most Goals, Game:** 5, vs. Delaware State (Oct. 23); vs. Howard (Oct. 24, 2007)  
**Most Goals, Season:** 23, 2009  
**Most Shots, Game:** 27, vs. South Carolina State (Nov. 7, 2007)  
**Most Shots, Season:** 226, 2009  
**Most Saves, Game:** 15 at Utah Valley (Oct. 5, 2012); 15, at IPFW (Aug. 31, 2006)  
**Most Saves, Season:** 143, 2006

(Division I competition began in 2006)  
 \*-tie computed as half win/half tie



Karen David

## Division I Superlatives

<b>NJIT</b>	<b>TEAM</b>	<b>Opponents</b>	<b>Points</b>	<b>INDIVIDUALS</b>
14 vs. Iona (8.25.06)	Points	13, Long Island Univ. (9.1.10) 13, Central Conn. State (9.13.06)	5, Kori Washington vs. Howard (10.24.07)	
15 vs. Howard, (10.24.07)	Points	25, Iona, (10.3.06)	<b>Goals</b>	
5 vs. Howard, (10.24.07)	Goals	7, North Dakota State (10.30.06)	2, Kori Washington vs. South Carolina State (11.7.07)	
5 vs. Delaware State (10.23.09)		7, Iona (10.13.06) 7, Monmouth (10.12.08)	2, Gechi Ukaegbu at Delaware State (10.23.09)	
5 vs. Howard, (10.24.07)	Assists	11, Iona, (10.13.06)	<b>Assists</b>	
5 vs. Wagner (9.10.08)			3, Erika Taugher vs. Wagner (9.10.08)	
31 vs. South Carolina State (11.2.07)	Shots	46, IPFW, (8.31.06)	<b>Shots</b>	
20 vs. South Carolina State (11.2.07)	Shots on Goal	21, IPFW, (8.31.06)	8, Amanda Dotten vs Howard (10.25.09)	
15 at Dartmouth (9.20.12)	Saves	19, South Carolina State (11.2.07)	<b>Shots on Goal</b>	
15 at Utah Valley (10.5.12) at IPFW (8.31.06)			4, four tied	
12 vs. Delaware State (10.11.12)	Corner Kicks	18, Drexel, (9.19.06)	<b>Saves</b>	
23 vs. South Carolina State (11.2.07)	Fouls	17, South Carolina State (11.2.07)	15, Samantha Bersett vs. Utah Valley (10.5.12)	

## All-Time Conference Honors

<b>Great West Conference Sportsmanship Award</b>	<b>Great West Conference (East Division)</b>	<b>College Sports Madness Great West Conference</b>	<b>Central Athletic Collegiate Conference</b>
2010 Sadie Mele	2010 Sadie Mele	2013 Rebecca Tustin (1st)	2005 Dena Baskous (1st)
	2010 Piper Lunan	2013 Kaelyn Gamel (1st)	2005 Bruna Lotufo (2nd)
<b>Great West Conference Defensive Player of the Year (East)</b>	2009 Sadie Mele	2013 Jenny Cislo (1st)	2005 Erika Taugher (3rd)
	2009 Cielianna Pasiciel	2013 Madeline Griep (2nd)	2002 Erin Salgado (HM)
2010 Sadie Mele	2009 Piper Lunan	2013 Danielle Pierce (2nd)	2000 Vallerie DeAngelis (HM)
2009 Sadie Mele	<b>Great West Conference All-Academic Team</b>	<b>United Soccer Conference</b>	<b>Women's Intercollegiate Athletic Conference</b>
<b>Great West Conference Offensive Player of the Year (East)</b>	2012 Meryl Hershfield	2007 Dena Baskous (1st)	1996 Wendy Gruenewald, Natalie Rodriguez, Maiysha Ware
	2012 Jenny Cislo	2007 Erika Taugher (2nd)	
2010 Piper Lunan	2011 Anna Kornmuller	2007 Sadie Mele (3rd)	<b>Independent Athletic Conference</b>
<b>Great West Conference</b>	2011 Meryl Hershfield	2007 Emma Vinski (3rd)	1996 Natalie Rodriguez
2012 Meryl Hershfield (1st)	2011 Erin Morris	2007 Kori Washington (3rd)	
2012 Gechi Ukaegbu (2nd)	2010 Amanda Dotten	2007 Michelle Borth (3rd)	
2012 Alex Adam (2nd)	2010 Erin Morris	2007 Xiomara Medina (3rd)	
	2010 Christi Taylor	<b>NSCAA Division II All-New England</b>	<b>NCAA Statistical Champion</b>
	2010 Meryl Hershfield	2005 Dena Baskous (2nd)	2000 Daisy Calderon, saves per game
	2009 Christi Taylor		
	2008 Erika Taugher		
	2008 Christi Taylor		



## All-Time vs. Opponents

Adelphi.....	.0-3
<b>UAlbany</b> .....	<b>0-2</b>
Allentown.....	.0-2
Army.....	.0-3
Binghamton.....	.0-2
Bloomfield.....	.6-4
Bridgeport.....	.0-1
Bryant.....	.1-2
Caldwell.....	.0-5-1
<b>Canisius</b> .....	<b>0-2</b>
Centenary (NJ).....	.0-1
<b>Central Connecticut State</b> .....	<b>0-0</b>
CCNY.....	.1-0
<b>Charleston Southern</b> .....	<b>0-0</b>
Charlotte (UNC Charlotte).....	.0-1
<b>Columbia</b> .....	<b>0-2</b>
Concordia (NY).....	.0-5
<b>Cornell</b> .....	<b>0-1</b>
Dartmouth.....	.0-1
<b>Delaware State</b> .....	<b>11-1</b>
Dominican (NY).....	.0-5
Drexel.....	.1-3
Duquesne.....	.0-1
<b>Fairleigh Dickinson</b> .....	<b>0-2</b>
FDU-Madison.....	.0-1
Felician.....	.1-5
Georgian Court.....	.0-4-1

Goldey-Beacom.....	.0-5
Green Mountain.....	.0-1
<b>Hartford</b> .....	<b>0-0</b>
Holy Family.....	.0-6
Houston Baptist.....	.0-4
Howard.....	.5-5-2
<b>Iona</b> .....	<b>0-5-1</b>
IPFW.....	.0-1
<b>Lafayette</b> .....	<b>0-5-1</b>
La Salle.....	.0-2
Lehigh.....	.0-2
<b>LIU Brooklyn</b> .....	<b>0-2</b>
LIU Post (CW Post).....	.0-3
Longwood.....	.0-4-1
Marist.....	.0-1
Marshall.....	.0-1
<b>Manhattan</b> .....	<b>0-1</b>
Mercy.....	.1-3
Molloy.....	.0-4
<b>Monmouth</b> .....	<b>1-6</b>
Mount St. Mary's (MD).....	.0-1-2
Mount St. Vincent.....	.5-2
Navy.....	.0-1
North Dakota.....	.0-2
North Dakota State.....	.0-2
NYIT (NY Tech).....	.0-4
New Jersey City.....	.2-0-1
Nyack.....	.0-7
Penn.....	.0-3
Philadelphia (Phila. Textile).....	.0-5
Philadelphia Biblical.....	.2-0

Post (CT).....	.1-4
Purchase.....	.2-1
Queens (NY).....	.0-4
Quinnipiac.....	.0-3-1
Rhode Island.....	.0-2
<b>Rider</b> .....	<b>2-2-1</b>
<b>Sacred Heart</b> .....	<b>0-0</b>
Siena.....	.0-1
South Carolina State.....	.6-4-1
<b>Saint Peter's</b> .....	<b>5-2-1</b>
St. Anselm.....	.0-1
St. Elizabeth.....	.3-1
Saint Joseph's (PA).....	.0-2
St. Joseph's-Patchogue.....	.0-1
St. Rose.....	.0-5
St. Thomas Aquinas.....	.0-2
Southampton.....	.0-3
Stevens.....	.0-1
Stony Brook.....	.0-1
Temple.....	.0-2
<b>The Citadel</b> .....	<b>0-0</b>
Utah Valley.....	.0-7
VMI.....	.1-0
Wagner.....	.1-6
Wilmington (DE).....	.1-4

2014 opponents in bold



Samantha Bersett



Jamee Simone

# Year-by-Year

## 1996 (0-11)

	MT. ST. VINCENT	L	2-3
	St. Joseph's (LI)+	L	
	at Allentown	L	0-1
	at Molloy	L	0-9
10/2	STEVENS TECH+	L	0-3
	at Allentown (ot)	L	0-1
	at St. Elizabeth	L	0-4
	at FDU-Madison	L	0-3
	at Centenary (NJ)	L	0-9
	at Nyack	L	0-4
	at Bloomfield	L	0-3

\*WIAA +IAC

Coach: Dan Kilday

## 1997 (0-13)

9/2	at Nyack	L	0-11
9/6	at Adelphi	L	0-14
9/14	at Albany	L	0-8
9/17	BRIDGEPORT	L	0-8
9/24	at Bloomfield	L	
9/30	PHILA. TEXTILE*	L	1-10
10/4	ST. ROSE*	L	0-5
10/11	SOUTHHAMPTON*	L	
10/15	at St. Thomas Aquinas	L	
10/18	at Molloy*	L	0-12
10/24	CW POST*	L	0-5
10/26	at New York Tech*	L	0-16
11/1	at Concordia (NY)*	L	0-7

\*NYAC (0-8)

Coach: Ralph Choonoo



Rebecca Tustin

## 1998 (0-10)

9/12	BLOOMFIELD	L	0-5
9/16	at CW POST*	L	0-13
9/20	ST. THOMAS AQUINAS		0-5
9/26	at St. Rose*	L	0-13
10/9	at Molloy*	L	0-8
10/14	NEW YORK TECH*	L	0-8
10/17	CONCORDIA (NY)*	L	0-4
10/21	ADELPHI*	L	fft.
10/24	at Southampton*	L	0-8
10/31	PHILA. TEXTILE*	L	0-14

\*NYCAC (0-8)

## 1999 (1-10)

9/11	CALDWELL	L	1-8
9/13	at Molloy*	L	0-10
9/23	at Bloomfield	W	2-1
9/26	ST. ROSE*	L	0-12
9/29	at Queens (NY)*	L	0-6
10/9	at Concordia (NY)*	L	0-8
10/14	SOUTHHAMPTON*	L	0-6
10/17	at Adelphi*	L	1-7
10/23	CW POST*	L	0-21
10/25	PHILADELPHIA*	L	1-13
10/30	at New York Tech*	L	0-9

\*NYCAC (0-9)

Coach: Tom Romano

## 2000 (3-13)

9/11	QUEENS (NY)	L	0-5
9/13	TEIKYO POST*	L	0-6
9/16	at Concordia (NY)	L	1-3
9/18	at Bloomfield* (ot)	L	1-2
9/21	CONCORDIA (NY)	L	0-2
9/25	at Mercy	L	1-2
9/27	GEORGIAN COURT*	L	0-7
9/30	at Holy Family*	L	0-8
10/2	MT. ST. VINCENT	W	3-1
10/4	at Dominican (NY)*	L	0-7
10/7	WILMINGTON (DE)* (ot)	W	2-1
10/11	at Caldwell*	L	0-5
10/14	FELICIAN*	L	0-3
10/16	at Mt. St. Vincent	W	6-0
10/18	NYACK*	L	0-4
10/22	at Goldey-Beacom*	L	0-8

\*CACC (1-9)

Coach: Tom Romano



Alex Adam

## 2001 (6-9)

9/7	at Mt. St. Vincent	W	7-1
9/10	MERCY	L	0-5
9/17	PHILADELPHIA BIBLEW		5-2
9/19	at Bloomfield*	W	2-0
9/22	at Teikyo Post*	L	0-8
9/26	at Nyack*	L	2-5
9/29	HOLY FAMILY*	L	0-7
10/1	CCNY	W	9-0
10/3	GOLDEY-BEACOM*	L	1-3
10/5	GEORGIAN COURT*	L	1-2
10/10	at Dominican (NY) *	L	0-8
10/15	ST. ELIZABETH	W	8-0
10/20	at Wilmington (DE) *	L	2-7
10/22	MT. ST. VINCENT	W	6-0
10/25	FELICIAN*	L	0-7

\*CACC (1-8)

Coach: Tom Romano

## 2002 (4-13)

8/31	at Saint Rose	L	0-8
9/1	vs. Green Mountain	L	0-6
9/7	at New Jersey City	W	3-0
9/11	at Queens (NY)	L	0-2
9/14	at Felician*	L	0-5
9/18	BLOOMFIELD* (ot)	W	3-2
9/21	TEIKYO POST*	L	1-5
10/5	at Georgian Court*	L	1-3
10/7	at Mt. St. Vincent	L	2-4



## Year-by-Year



Dana Schules

10/9	DOMINICAN (NY) *	L	0-7
10/14	at Goldey-Beacom*	L	0-8
10/19	WILMINGTON (DE) *	L	0-6
10/21	ST. ELIZABETH	W	3-0
10/23	PURCHASE	W	2-0
10/27	at Holy Family*	L	1-5
10/30	NYACK*	L	2-3
11/1	at Caldwell*	L	0-3
*CACC (1-9)			
Coach: Tom Romano			

<b>2003 (5-12-1)</b>			
9/6	NEW JERSEY CITY (2ot)	T	1-1
9/8	at Mercy	L	1-3
9/10	QUEENS (NY)	L	0-6
9/17	at Bloomfield*	W	3-0
9/20	at Teikyo Post*	L	0-4
9/24	at Nyack*	L	0-5
9/27	HOLT FAMILY*	L	0-6
9/29	at Purchase	L	0-4
10/1	GOLDEY-BEACOM*	L	0-5
10/4	GEORGIAN COURT*	L	0-3
10/6	MT. ST. VINCENT	W	6-0
10/11	CALDWELL*	L	0-6
10/13	FELICIAN*	L	1-5
10/17	at Delaware State	W	5-1
10/18	at Wilmington (DE) *	L	0-8
10/20	at St. Elizabeth (2ot)	W	2-1

10/24	at Dominican (NY) *	L	0-5
10/25	PHILA. BIBLICAL	W	2-0
*CACC (1-9)			
Coach: Tom Romano			

<b>2004 (5-10-1)</b>			
8/29	ST. ANSELM COLLEGE	L	0-8
9/4	NYIT	L	0-3
9/8	at Felician*	L	2-3
9/11	at Georgian Court* (2ot)	T	0-0
9/15	BLOOMFIELD*	W	1-0
9/25	at Holy Family *	L	0-5
9/27	TEIKYO POST*	W	1-0
9/29	at Goldey-Beacom*	L	0-3
10/6	DOMINICAN (NY) *	L	0-2
10/9	at Caldwell*	L	0-2
10/13	at NJCU	W	5-1
10/16	MERCY	W	1-0
10/17	ST. ROSE	L	0-1
10/20	WILMINGTON (DE) *	L	0-4
10/23	NYACK* (NJIT DAY)	L	1-2
10/31	PURCHASE	W	4-1
*CACC (2-7-1)			
Coach: Tom Romano			
<b>2005 (8-6-3)</b>			
8/26	at Drexel	L	0-6
9/4	ST. ANSELM	L	0-5
9/7	FELICIAN*	W	3-0
9/10	at NYIT (ot)	L	1-2
9/14	BLOOMFIELD*	W	2-0

9/17	at Post * (2ot)	T	0-0
9/21	at Nyack*	W	1-0
9/24	HOLY FAMILY*	L	0-2
10/1	GEORGIAN COURT*	W	3-0
10/5	at Dominican (NY) *	W	1-0
10/8	CALDWELL* (2ot)	T	1-1
10/15	DELAWARE STATE	W	3-1
10/19	at Wilmington (DE) *	W	1-0
10/23	at Saint Rose	L	0-5
10/27	PHILADELPHIA*	L	0-2
11/9	vs. Philadelphia # (2ot)	T	1-1
*CACC (7-2-2) #ECAC Division II Tourn.			
Coach: Alyssa Radu			

<b>2006 (1-13-1)</b>			
8/25	MARSHALL	L	1-10
8/31	at IPFW	L	0-6
9/1	vs. Utah Valley State	L	0-6
9/8	MANHATTAN	L	0-3
9/13	at Iona	L	0-7
9/15	vs. Siena	L	0-6
9/17	at Albany	L	1-6
9/19	at Drexel	L	0-2
9/24	at UNC-Charlotte	L	0-5
10/1	at Howard	W	3-1
10/4	at Quinnipiac	L	0-4
10/14	NYIT	L	1-2
10/19	MONMOUTH	L	0-3
10/21	at St. Peter's (2ot)	T	0-0 (
10/30	NO DAKOTA STATE	L	0-7
Coach: Alyssa Radu			



Megan Dellavalle

<b>2007 (4-14-1)</b>			
9/2	at LIU	L	0-1
9/7	ALBANY (ot)	L	1-2
9/9	QUINNIPIAC	L	0-1
9/15	IONA	L	0-1
9/19	DREXEL	L	0-1
9/22	at Longwood*	L	0-1
9/25	at Binghamton	L	1-3
9/28	at Monmouth	L	0-5
9/30	at Wagner	L	1-2
10/5	at LaSalle	L	0-4
10/7	at Navy	L	0-3
10/14	at North Dakota State	L	1-3
10/19	at Utah Valley*	L	0-5
10/24	HOWARD*	W	5-1
10/26	at Delaware State*	W	2-0
11/2	SO CAROLINA STATE*	T	1-1
11/4	SAINT PETER'S	W	2-0





**Jaclyn Ward**

11/7	vs. South Carolina State <sup>^</sup>	W	4-0
11/9	at Utah Valley <sup>^</sup>	L	0-3

\* USC (2-2-1) ^ USC Tournament

Coach: Alyssa Radu

#### 2008 (2-16-1)

8/26	at Army	L	1-3
8/29	at Saint Peter's	L	0-1
8/31	BINGHAMTON	L	0-2
9/5	CANISIUS	L	0-3
9/7	at Drexel	L	0-3
9/10	WAGNER	W	4-2
9/12	MONMOUTH	L	0-7
9/17	at Mount St. Mary's	L	2-5
9/18	at La Salle	L	0-3
9/21	at Quinnipiac	L	0-6
9/26	at Lafayette	L	0-2
9/28	at Iona	L	1-2
10/5	at South Carolina State*	W	2-0
10/8	UTAH VALLEY*	L	1-2
10/11	LONGWOOD* (2ot)	T	0-0
10/17	DELAWARE STATE*	L	0-1
10/19	BRYANT	L	1-3
10/26	at Howard*	L	0-1
11/1	at Utah Valley <sup>^</sup>	L	0-4

\* USC (1-3-1) ^ USC Tournament

Coach: Kevin Leacock

#### 2009 (7-9-2)

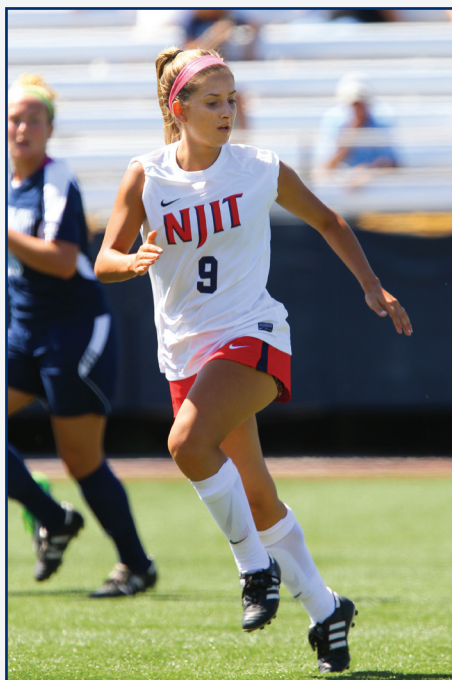
8/28	at Army	L	0-3
8/30	at Canisius	L	0-1
9/4	DREXEL (2ot)	W	2-1
9/11	SAINT PETER'S	L	0-1
9/13	RIDER	W	2-0
9/18	MOUNT ST. MARY'S (2ot)T	1-1	
9/20	at Bryant	W	3-2
9/25	LAFAYETTE	L	0-1
9/28	IONA (ot)	L	1-2
10/2	SO. CAROLINA STATE *W	2-1	
10/4	at Howard * (2ot)	T	1-1
10/9	at South Carolina State *	L	0-1
10/18	DELAWARE STATE *	W	2-0
10/23	at Delaware State *	W	5-2
10/25	HOWARD *	W	2-0
10/30	at Wagner	L	0-3
11/1	at Longwood	L	1-2
11/6	NORTH DAKOTA ^	L	1-3

\* GWC (5-2-1) ^ GWC Quarterfinals

Coach: Kevin Leacock

#### 2010 (4-13-1)

8/27	MONMOUTH	L	0-2
8/29	at Saint Peter's	W	2-1
9/3	BRYANT (ot)	L	1-2
9/5	at Saint Josephs	L	0-3
9/10	WAGNER	L	0-1
9/12	at Mount St. Mary's (2ot)	T	1-1



**Brittany Goulart**



**Kayeln Gamel**

9/17	at Lafayette	L	0-2
9/21	at Rider	L	2-5
9/24	ARMY	L	0-2
9/26	at Howard* (ot)	L	1-2
10/3	at Lehigh	L	0-6
10/8	at Delaware State*	W	4-3
10/15	SO. CAROLINA STATE*	L	0-2
10/17	LONGWOOD	L	1-3
10/22	DELAWARE STATE*	W	1-0
10/29	HOWARD*	W	2-1
10/31	at South Carolina State*	L	1-3
11/5	vs. Houston Baptist <sup>^</sup>	L	0-1

\* GWC (3-3) ^ GWC Tournament

Coach: Kevin Leacock

#### 2011 (2-17-0)

8/26	at Iona	L	1-3
8/30	at Wagner	L	1-2
9/2	RIDER	L	0-2
9/5	at Monmouth	L	0-6
9/9	at Fairleigh Dickinson	L	0-1
9/11	LAFAYETTE	L	0-1
9/14	LONG ISLAND	L	0-2
9/18	LEHIGH	L	0-2
9/22	SAINT PETER'S	W	2-1
9/25	SAINT JOSEPH'S	L	0-2
10/7	DELAWARE STATE*	W	2-0
10/9	at Longwood	L	0-2

## Year-by-Year



Carly Berdan

10/12	at Penn	L	0-8
10/15	at South Carolina State*	L	0-1
10/20	HOWARD*	L	0-2
10/22	UTAH VALLEY*	L	1-4
10/27	at North Dakota*	L	0-2
10/29	at Houston Baptist*	L	0-1
11/4	at Houston Baptist^	L	0-1

\*GWC (1-5) ^ GWC Tournament

Coach: Sergio Gonzalez



Madeline Griep

## 2012 (4-13-3)

8/17	at Saint Peter's	W	3-0
8/19	at Rider (2OT)	L	0-1
8/24	MARIST	L	2-3
8/26	at Rhode Island	L	0-1
8/31	at Temple	L	0-1
9/2	MONMOUTH	W	2-1
9/7	QUINNIPIAC (2OT)	T	0-0
9/9	WAGNER	L	1-3
9/14	FDU	L	1-3
9/16	IONA (2OT)	T	1-1
9/20	at Dartmouth	L	0-5
9/23	at Lafayette (2OT)	T	1-1
9/30	at UPenn	L	0-4
10/5	at Utah Valley*	L	0-2
10/7	COLUMBIA	L	0-2
10/11	DELAWARE STATE*	W	1-0
10/13	HOUSTON BAPTIST*	L	0-2
10/20	SO.CAROLINA STATE*W	1-0	

(2OT)

10/25	at Howard*	L	0-1
11/3	vs. Howard^	L	1-2

(2OT)

\*GWC (2-3)

^GWC Tournament

Coach: Sergio Gonzalez

## 2013 (8-10-1)

8/23	TEMPLE	L	0-2
8/25	RHODE ISLAND	L	0-3
8/29	at Saint Peter's	W	3-2
9/1	at Stony Brook	L	1-2

9/5	at Monmouth	L	0-3
9/8	LAFAYETTE	L	0-2
9/13	VMI	W	1-0
9/15	RIDER	W	2-0
9/20	at Wagner	L	0-4
9/22	at Cornell	L	0-4
9/27	at Duquesne	L	0-3
10/4	at Delaware State	W	3-0
10/8	at Columbia	L	0-2
10/13	SO. CAROLINA STATE	W	3-1
10/19	at South Carolina State	W	1-0
10/22	PENN	L	0-2
10/27	at Howard	W	1-0
11/1	HOWARD (2OT)	T	1-1
11/6	DELAWARE STATE	W	3-0

Division I record for wins &amp; shutouts

Coach: Mandi Risden



Daniell Pierce



# All-Time Varsity Roster

(First Season: 1996; complete thru 2012)

## A

ABERG, Elina 11  
**ADAM, Alex 12, 13**  
 ALVAREZ, Janina 97,98  
**ANDRUS, Catherine 10, 11, 12**  
 ARMSTRONG, Tama 96  
 AUGUSTINE, Joann 96  
 AWOKE, Hiywote 96,97,98,99

## B

BABUCHIWSKI, Dorothy 03  
 BALLOU, Nicole 99  
 BARRETO, Michelle 00,01  
 BASKOUS, Dena 05, 06, 07  
 BAYIOKOS, Amanda 04, 05, 06, 07  
 BAYIOKOS, Cindy 05, 06  
 BECKER, Melissa 97,98  
**BEER, Larissa 13**  
**BERDAN, Carly 13**  
**BERSETT, Samantha 12, 13**  
 BESTAWROS, Mariam 09, 11  
 BHANDERI, Nilam 97,98,99  
 BILLING, Camile 10, 11, 12, 13  
 BORSCHKE, Marissa 12  
 BORTH, Michelle 07, 08, 09, 10  
 BUCHALA, Sarah 01,02,03,04

## C

CALDERON, Daisy 00,01,03  
 CARON, Mary 98,99  
 CHOY, Yvonne 96,97,98  
**CISLO, Jenny 11, 12, 13**  
 CLOVIS, Darlene 00  
 COHEN, Krista 05, 06, 07  
 CORREA, Claudia 03  
 CROWLEY, Kate 99  
 CUBIAS, Marina 96

## D

**DAVID, Karen 13**  
 DeANGELIS, Vallerie 00  
 DeROSA, Katie 05, 06, 07, 08  
**DELLAVALLE, Megan 11, 12, 13**  
 DORN, Jennifer 00,01  
 DOTTEN, Amanda 09, 10  
 DUNCAN, Kate 02,04

## E

ELLIOT, Laura 96,97

## F

**FAKOLUJO, Abi 12, 13**  
 FARROW, Ann 96  
 FERRERA, Michelle 11  
 FINN, Maura 03,04  
 FLORES, Linda 00,01

## G

**GAMEL, Kaelyn 12, 13**  
 GANNON, Amanda 07, 08  
 GO, Jean 02  
 GOLDMAN, Alexis 97, 98, 99, 00  
 GOUGH, Heather 01  
 GOULART, Brittany 13  
 GRIFFITHS, Nadia 97,98,99  
**GRIEP, Madeline 12, 13**  
 GRISWOLD, Kimberly 02  
 GRUENEWALD, Wendy 96  
 GUARDADO, Luisa 99  
 GUISHARD, Corina 02

## H

HATTLE, Emmy 12, 13  
 HENRY, Margarette 96,97,98  
 HEPFINGER, Katie 04, 05, 06, 07  
 HERMAN, Susan 97,98  
 HERNANDEZ, Heather 00  
 HERRERA, Jennifer 00,02,03,04  
 HERSHFELD, Meryl 09, 10, 11, 12  
 HIGGINS, Teresa 06  
 HORDYNSKY, Natalie 01  
 HOUSER, Leila 99,00  
 HOWE, Rebecca 00  
 HOWELL-HARRIES, Kyrsten 07, 08, 09, 10

## I

INTASAMAKUL, Joy 01 ,02

## J

**JONES, Kylie 11, 12, 13**  
 JOY-WAY, Alida 96, 98

## K

KALCZEWSKI, Jennifer 08, 09, 10, 11  
**KEELBAUGH, Julia 13**  
 KLING, Lisa 03  
 KORNMULLER, Anna 10, 11  
 KOTEL, Dinah 02

## L

LaBELLARTE, Christina 08, 10, 11  
 LARGE, Katie 99  
 LEIBEL, Katie 01  
 LEICHTNAM, Elizabeth 02, 03, 04  
 LEMARIE, Linda 97, 98, 99  
 LOFGREN, Ashley 13  
 LOTUFO, Bruna 05, 06  
 LUNAN, Piper 08, 09, 10

## M

MACAULAY, Keri-Anne 04, 05  
 MACIAS, Stephanie 04, 05, 07  
 MAKLOUFI, Keltoum 99  
 MARTINEZ, Dolores 00  
 MAYFIELD, Taekia 00  
 MEDINA, Xiomara 07  
 MELE, Sadie 07, 08, 09, 10  
 McHUGH, Courtney 2013  
 MENDOZA, Monica 00  
 MERCHAN, Karina 01,02  
 MESIDOR, Ketsia 96,97,98  
 MEVS, Carmina 99,00  
 MISIUNAS, Jayna 02,03,04  
 MISIUNAS, Jillian 02,03,04  
 MORALES, Briana 05, 06, 07, 08  
 MORRIS, Erin 09, 10, 11, 12  
 MOTTA, Millie 09  
 MOVING, Lisa 97,98  
 MUNOZ, Mary 07, 08, 09, 10  
 MURRAY, Amanda 11

## N

NAITO, Chacha 09  
 NOBLES, Chelsea 06

## O

OBAZENU, Veta 99  
 O'CONNOR, Jackie 99  
 OSSA, Ana 03  
 O'DWYER, Aine 05, 07

## P

PARISI, Casey 10  
 PASICIEL, Cieliana 08, 09, 10, 11  
 PATEL, Lali 98  
 PATEL, Sushreeta 97  
 PAUL, Melissa 07, 09  
**PIERCE, Danielle 12, 13**  
 POSSIBLE, Vicki 96,97,98  
 PHILLIPS, Marie 98,99  
 POWDHAR, Joanna 05, 06

## R

RAGNI, Caitlyn 08, 09, 10, 11  
 RAMIREZ, Magda 99  
 RAPATSKI, Brandi 96  
 REDDEN, Amanda 10, 11, 12, 13  
 REEBER, Lisa 99  
 REYNOLDS, Leigh 04  
 RIBELIN, Nettie 00,01  
 RIVERA, Betty 99,00  
 RIVIRIEGO, Sheila 99  
 RODRIGUES, Melanie 10  
 RODRIGUEZ, Natalie 96,97,98,99

ROMANO, Mary Kate 02  
 RUSCIANO, Sarah 07

## S

SALGADO, Erin 02, 03, 04, 05  
 SAMUEL, Jaky 08  
 SCHMITT, Erin 10, 11, 12, 13  
 SCHULES, Dana 13  
**SEELY, Grace 11, 12, 13**  
 SEPULVEDA, Angelica 05, 06, 07  
 SIMEON, Verdane 96  
**SIMONE, Jamee 13**  
 SMITH, Patricie 99  
 SOLT, Karisa 01,02,03  
 SOLU, Alyn 96,97,98  
 STOLTZ, Heather 96

## T

TALAI, Mina 03  
 TAUGHER, Erika 04, 05, 07, 08  
 TAYLOR, Christi 07, 08, 09, 10  
 TOMCZAK, Anna 99,00,01  
 TUDOR, Lauren 99  
 TURNBULL, Breanna 06  
**TUSTIN, Rebecca 10, 12, 13**

## U

UKAEGBU, Gechi 09, 10, 11, 12

## V

VAZQUEZ, Nicole 11  
 VICZIAN, Karoly 73, 74, 75  
 VINSKI, Emma 05, 07, 08

## W

WALLACE, Leah 96,98,99  
**WARD, Jaclyn 13**  
 WARE, Maiysha 96,97,98  
 WASKO, Cathy 01  
 WASHINGTON, Kori 07, 08, 09, 10  
 WHITWORTH, Elaine 01  
 WHITWORTH, Elizabeth 01  
 WIELAND, Rachel 96  
 WILKINSON, Jessi 01  
 WILLIAMS-WEIR, Erin 12  
 WU, Peychi 97,98,99

## Z

ZAMBRANO, Claudia 97,98  
 ZIEMBA, Melissa 96

## Returning players bold

*Corrections welcome. Please contact  
 Stephanie Pillari at [pillari@njit.edu](mailto:pillari@njit.edu)*



## Hall of Fame

Name	Grad. Year	Contribution	Sport (s)	Years Active	Year of Induction	Name	Grad. Year	Contribution	Sport (s)	Years Active	Year of Induction
BAKUN, Andrew I.	1982	Athlete/Asst. Coach	M-Soccer	1978-81/ 90-91	2005	IRIS, Herb	1951	Benefactor	--	--	2007
BAKUN, Myron	1967	Athlete	M-Soccer	1964-66	1991	KAMINSKY, Nicholas J.	1978	Athlete	Baseball	1975-78	2006
BARTH, Roland E.	1960	Athlete	M-Fencing	1957-59	2009	KASBARIAN, Raymond P.	1966	Founder/Athlete	Judo	1962-66	1989
			M-Soccer	1956-59		KETZNER, Robert Shelby	--	Coach	Rifle	1962-86	1987
BAUDER, Fred "Coach"	--	Coach	M-Basketball	1932-61	1989	KHOWAYLO, Alex	1969	Athlete	M-Soccer	1960-63	1996
BLUM, Raymond E.	1950	Distinguished Alumnus	Speedskating/ Cycling	--	1996	LUBETKIN, Charles "Tudy"	1953	Athlete	M-Basketball/ M-Track	1949-52	1994
						LYNCH, Robert K.	1984	Athlete/Coach	M-Fencing	1977-80/ 86-91	1993
BORJA, Hernan "Chico"	1981	Athlete	M-Soccer	1977-80	1986	MacDONALD, Dan	1984	Athlete	Baseball	1981-84	1992
BORNAKO, Gregory "Egor"	1970	Athlete	M-Fencing	1966-70	1987	OLSEN, Richard J.	1969	Athlete	M-Basketball	1965-69	1988
BOWSER, Hamilton V.	1952	Athlete	M-Fencing	1948-52	1989	OLSON, George R.	1977	Athlete	Baseball	1974-77	1987
BRADLEY, Thomas	1978	Athlete	M-Swimming	1974-78	1990	PAULIUS, Raymond V.	1985	Athlete	M-Soccer	1980-83	2006
BROWN, Andrew D.	1963	Athlete	M-Soccer	1956-59	2006	RODGERS, Tarik	1996	Athlete	M-Volleyball	1992-95	2010
CRIMMINS, David	1952	Athlete	M-Fencing	1948-52	2007	ROGERS, Warren	1988	Athlete	M-Basketball	1983-87	1993
CRUZ, Edward	1963	Athlete	M-Soccer	1959-62	1995	ROMULUS, Rudy	1991	Athlete	M-Volleyball	1988-91	1996
DAWSON, Marilyn E.	1986	Athlete	WVB/WBKB/SB	1982-86	1991	ROSS, Jonathan A.	1956	Athlete	M-Soccer	1953-55	2010
DeNICOLA, Carmine P.	1978	Athlete	Baseball	1975-78	2005	SARLO, Paul A.	1992	Athlete	Baseball	1989-91	2005
DeNURE, Dave	--	Coach	M-Volleyball W-Volleyball W-Basketball	1982-98 1986-90 1987-88	2009	SCHMID, John "Gene"	--	Asst Coach/Coach	Baseball	1968-72/ 73-97	2002
DeVITO, Louis	1960	Athlete	M-Soccer/ M-Fencing	1956-60	1992	SIMON, J. Malcolm	--	Coach	M-Soccer	1955-83	1994
DIAS, Joe A.	1977	Athlete	M-Soccer	1973-76	1993			Director of Athletics	--	1983-94	
DRURY, Eugene M.	1963	Athlete	M-Tennis	1960-63	1988	SKURLA, Peter J.	1941	Athlete	Bowling	1937-41	1992
ENG, Katherine	1993	Athlete	W-Volleyball	1989-92	2007	SORIANO, Gregory	1975	Athlete	M-Fencing	1968-72	2010
ETIENNE, Yves	1979	Athlete	M-Volleyball	1976-78	1990	SWANSON, Robert F.	--	Director of Athletics	--	1947-82	1986
FEHN, Gilbert F.	1940	Athlete	M-Basketball/ M-Tennis	1936-40	1992	TAETZSCH, Robert	1952	Athlete	M-Fencing	1948-52	2007
						TAETZSCH, William	1952	Athlete	M-Fencing	1948-52	2007
FITZGERALD, Joseph M.	--	Coach/Asst. Coach	M-Basketball	1961-66/ 52-61	1986	TOSATO, Lawrence P.	1956	Athlete	M-Basketball/ Baseball	1952-56	1987
FLEISHER, Seymour "Zoom"	1951	Athlete	M-Basketball	1947-51	1992	TUBELLO, Jeffrey	1976	Athlete	Rifle	1972-76	1988
GAGLIARDO, Salvatore A.	1985	Athlete	M-Basketball	1981-85	1995	VAN WRIGHT, Nevea	1997	Athlete	W-Basketball	1991-96	2005
GALLAGHER, Thomas G.	1985	Athlete	M-Basketball	1981-85	1991	WALSH, John J.	1966	Athlete	MSoc/MBKB/ Baseball	1962-66	1986
GIOVANNOLI, Arnold L.	1953	Athlete	M-Basketball	1950-53	1993	WASNIEWSKI, Frank	1980	Athlete	M-Tennis	1977-80	1990
GOLDRICK PITT, Elizabeth M.	1990	Athlete	W-Volleyball/ Softball/WBKB/WTen	1985-90	1995	WELGOS, Bob	1962	Athlete	M-Basketball/ Bowling	1959-62	2005
GRAZIANO, Jean M.	1989	Athlete	Softball	1986-89	2009	WOROBEC, Myron S.	1966	Athlete	M-Soccer	1962-65	1994
GRUENEWALD, Wendy A.	1997	Athlete	WBKB/Softball/ W-Volleyball/W-Soccer	1992-96	2003	YONEZUKA, Yoshishada	--	Founder/Coach	Judo	1962-?	1991
HAASE, Jay W.	1975	Athlete	M-Fencing	1971-75	1988	ZORN, Werner	1962	Athlete	M-Soccer	1958-61	1988
HAMMOND, Kenneth W.	1979	Athlete	M-Soccer	1974-77	2003						
HANDWERKER, Andy	1963	Athlete	M-Soccer	1959-62	2002	<b>Teams</b>	<b>Year</b>	<b>Accomplishments</b>		<b>Year of Induction</b>	
HAUSSER, Paul C.	--	Administrator Coach	-- Fencing/Baseball	1953-91 1954-88/53-72	1990	Men's Soccer	1960	NAIA co-National Champion		1988	
HUBEY, Ali	1972	Athlete	M-Soccer	1968-71	1990	Men's Basketball	1981-82	NJIT's first ECAC and IAC champion		1990	
HURTADO, Fabian	1975	Athlete	M-Soccer	1970-74	1987	Baseball	1982	NJIT's second ECAC and IAC champion		1993	

# Directions

## FOR GPS USERS

The address for Lubetkin Field at Mal Simon Stadium, the Estelle and Zoom Fleisher Athletic Center, and the Naimoli Family Athletic and Recreational Facility is 80 Lock Street, Newark, NJ, 07102.

## BY CAR

**New Jersey Turnpike: Driving North from South Jersey:** Take NJ Turnpike to Exit 13A Newark Airport. After toll stay to left and follow signs to Rt. 1 & 9 North. You will merge onto Rt. 1 & 9 North. Airport will be on right. Follow signs for downtown Newark and Rt. 21 North-(left lane exit ramp). Downtown Newark will be in front of you. NYC will be off to your right. Follow Rt. 21 North (McCarter Highway). Turn left on Raymond Blvd. Follow Raymond Blvd. past Warren Street traffic light and Fleisher Athletic Center, Naimoli Center, and Lubetkin Field at Mal Simon Stadium will be to your right (one soccer goal line runs along Warren Street and the soccer sideline parallels Lock Street).

**New Jersey Turnpike: Driving South from North Jersey:** Take exit 15W to Route 280 West, then follow Route 280 West directions.

**Route 280 West:** After drawbridge, take Exit 15A (Rt. 21 South - McCarter Highway). Follow Rt. 21 South to Raymond Blvd. Turn right on Raymond Blvd. Follow Raymond Blvd. past Warren Street traffic light and Fleisher Athletic Center, Naimoli Center, and Lubetkin Field at Mal Simon Stadium will be to your right (one soccer goal line runs along Warren Street and the soccer sideline parallels Lock Street).

**Route 280 East:** Take Exit 15 (Rt. 21 South - McCarter Highway). Follow Rt. 21 South to Raymond Blvd. Turn right on Raymond Blvd. Follow Raymond Blvd. past Warren Street traffic light and Fleisher Athletic Center, Naimoli Center, and Lubetkin Field at Mal Simon Stadium will be to your right (one soccer goal line runs along Warren Street and the soccer sideline parallels Lock Street).

**Garden State Parkway (North & South bound):** Take exit 145 to Route 280 East, then follow Route 280 East directions.

**Route 1 & 9 North & South:** Take exit marked Newark, Rt. 21 North (McCarter Highway). Follow Rt. 21 North (McCarter Highway). Turn left on Raymond Blvd. Follow Raymond Blvd. past Warren Street traffic light and Fleisher Athletic Center, Naimoli Center, and Lubetkin Field at Mal Simon Stadium will be to your right (one soccer goal line runs along Warren Street and the soccer sideline parallels Lock Street).

**Route 78 East:** Take Route 78 East to Rt. 21 North. Turn left on Raymond Blvd. Follow Raymond Blvd. past Warren Street traffic light and Fleisher Athletic Center, Naimoli Center, and Lubetkin Field at Mal Simon Stadium will be to your right (one soccer goal line runs along Warren Street and the soccer sideline parallels Lock Street).

**Route 22 East:** Take Route 22 East to Route 21 North. Turn left on Raymond Blvd. Follow Raymond Blvd. past Warren Street traffic light and Fleisher Athletic Center, Naimoli Center, and Lubetkin Field at Mal Simon



Stadium will be to your right (one soccer goal line runs along Warren Street and the soccer sideline parallels Lock Street).

**Route 21 North:** Follow Rt. 21 North to Raymond Blvd. Turn left onto Raymond Blvd. Follow Raymond Blvd. past Warren Street traffic light and Fleisher Athletic Center, Naimoli Center, and Lubetkin Field at Mal Simon Stadium will be to your right (one soccer goal line runs along Warren Street and the soccer sideline parallels Lock Street).

**Route 21 South:** Follow Rt. 21 South (McCarter Highway) to Raymond Blvd. Turn Right on Raymond Blvd. Follow Raymond Blvd. past Warren Street traffic light and Fleisher Athletic Center, Naimoli Center, and Lubetkin Field at Mal Simon Stadium will be to your right (one soccer goal line runs along Warren Street and the soccer sideline parallels Lock Street).

**New York Thruway:** Thruway to Exit 14A, Garden State Parkway. Follow Garden State Parkway directions above.

**George Washington Bridge:** NJ Turnpike South to Exit 15W. Follow Route 280 West directions above.

**Lincoln Tunnel:** West on Rt. 3 to Rt. 21 South. Turn right onto Raymond Blvd. Follow Raymond Blvd. past Warren Street traffic light and Fleisher Athletic Center, Naimoli Center, and Lubetkin Field at Mal Simon Stadium will be to your right (one soccer goal line runs along Warren Street and the soccer sideline parallels Lock Street).

**From Brooklyn, Queens and Long Island:** Take Verrazano-Narrows Bridge (Interstate 278) and follow 278 across Staten Island. Cross Goethels Bridge. Follow signs to New Jersey Turnpike North then follow New Jersey Turnpike directions above.

## PARKING

**Bus/Van Parking:** Visiting buses and vans may usually park on Lock Street adjacent to the athletic center. Please be careful not to block the parking space reserved for the doctor.

**Visitor Parking:** Visitor parking may be reserved in advance through your host. Otherwise, visitor parking at NJIT is available in the NJIT parking deck. Turn right onto Warren Street. Turn right onto Colden Street and proceed around the block to Summit Street. Parking Deck entrance is located to your right before the intersection with Warren Street.

**Parking for on-campus athletic contests:** NJIT is offering free off-street parking for fans attending regular season home soccer and volleyball matches and basketball games. The parking entrance, marked by a yellow sign is located on New Street.

## OTHER TRANSPORTATION SYSTEMS

**Newark Liberty International Airport:** Minutes from the NJIT campus. A minibus (Newark Airlink) or taxi service connects the airport with Penn Station in Newark. Bus, Newark Light Rail, and taxi connections are available at the station.

**Newark Penn Station:** Located in downtown Newark, connections to the NJIT campus may be made by bus, Newark Light Rail, or taxi.

**Morris & Essex Broad Street Station:** A five-block walk to the NJIT campus via MLK Boulevard to Central Avenue. Taxi service is also available.

**Newark Light Rail:** From Penn Station in Newark, take the Warren Street stop for the NJIT campus. The Warren Street stop is on the sidewalk behind the press box for Lubetkin Field at J. Macolm Simon Stadium.

## HOTELS DOWNTOWN

### Hilton Newark Gateway

Gateway Center, Raymond Boulevard & McCarter Highway  
Newark, NJ, 973/622-5000

### Robert Treat Hotel

50 Park Place, Newark, NJ, 973/622-1900

### Hampton Inn & Suites Newark Riverwalk

100 Passaic Ave, Harrison, NJ, 973/483-1900

## NEAR NEWARK LIBERTY INTERNATIONAL AIRPORT

### Best Western Newark Airport West

101 International Way, Newark, NJ, 973/621-6200

### Hilton Newark Airport

1170 Spring Street, Elizabeth, NJ, 908/351-3900

### Holiday Inn Newark Liberty International Airport

160 Frontage Road, Newark, NJ, 973/589-1000







### 2014 Highlanders Women's Soccer

Back Row (l-r): Jaclyn Ward, Alex Adam, Rebecca Tustin, Kylie Jones, Danielle Pierce,  
Jenny Cislo, Jamee Simone, Carly Berdan

Middle Row (l-r): Brittany Goulart, Grace Seely, Assistant Coach Scott Waddell, Head Coach Mandi Ridsen,  
Volunteer Coach Tim Verschuren, Abi Fakolujo, Kaelyn Gamel

Front Row (l-r): Julia Keebaugh, Madeline Griep, Amelia Sapirman, Karen David, Samantha Bersett,  
Larissa Beer, Dana Schules, Megan Dellavalle





## 2014 HIGHLANDERS WOMEN'S SOCCER

### AUGUST

22	CANISIUS	7:00 p.m.
24	HARTFORD	1:00 p.m.

#### *Nike Tournament*

29	at Charleston Southern	4:00 p.m.
31	vs. The Citadel	12:00 p.m.

### SEPTEMBER

4	MONMOUTH	7:00 p.m.
7	MANHATTAN	1:00 p.m.
10	SAINT PETER'S	7:00 p.m.
12	at Central Connecticut State	7:00 p.m.
14	at Rider	3:00 p.m.
19	at Iona	4:00 p.m.
25	at UAlbany	7:00 p.m.
28	FAIRLEIGH DICKINSON	1:00 p.m.

### OCTOBER

1	at LIU-Brooklyn	6:00 p.m.
10	DELAWARE STATE (Senior Night)	7:00 p.m.
12	COLUMBIA	1:00 p.m.
15	at Lafayette	7:05 p.m.
19	CORNELL	4:30 p.m.

#### *Independent Soccer Tournament*

31	TBD (at Delaware State)	4:00 p.m./7:00 p.m.
----	-------------------------	---------------------

### NOVEMBER

2	TBD (at Delaware State)	11:00 a.m./2:00 p.m.
---	-------------------------	----------------------

Head Coach: Mandi Risen

Assistant Coaches:

Scott Waddell, Tim Verschuren

CAPS/Bold = Home matches at Lubetkin Field at Mal Simon Stadium