

WOMEN'S

2012



Erin Morris



Meryl Hershfield



Gechi Ukaegbu



New Jersey Institute of Technology

njithighlanders.com



NJIT

THE
EDGE
IN

KNOWLEDGE



Jillian Loyden United States Women's National Team Goalkeeper and 2012 Member of the Gold Medal Team at training with the 2012 NJIT Women's Soccer Team.

2012 Women's Soccer Media Guide

TABLE OF CONTENTS

About NJIT	2-5
University Administration	6-7
Sports Medicine & Strength and Conditioning	8
Academic Support & Athletics Senior Staff	9
NJIT in Division I	10-11
Athletics Facilities	12-14
About Newark	15
Sports & Entertainment Around Newark	16-17
Head Coach Sergio Gonzalez	18-19
Assistant Coaches	20
Roster	21
2011 Statistics and Results	22
School Records	23-24
All-Time Coaching Records	24
Division I Records/Division I Superlatives	25
All-Time vs. Opponents	26
All-Time Conference Honors	26
Year-by-Year	27-28
All-Time Roster	29-30
Hall of Fame	31
Great West Conference	32
Athletic Administration & Coaching Staff ..	33
Directions to NJIT	34

WOMEN'S SOCCER

Head Coach (alma mater, year): Sergio Gonzalez (Salve Regina '00)
 Phone/Email: 973-596-8239/ sgonzal@njit.edu
 Career Record: 2-17-0 (1)
 Assistant Coaches: Manda Ridsen (Auburn, 1999), Erwin van Bennekon (CISCO Academy '02)
 Captains: Game captains
 2011 overall: 2-17-0 GWC record/finish: 1-5-0 (7th)
 Letterwinners returning/lost (starters): 12/5 (8/3)

QUICK FACTS

Location: University Heights, Newark, NJ
 Founded: 1881
 Enrollment: 7,125 (undergraduate)
 NJIT website: www.njit.edu
 Nickname/Colors: Highlanders/Red and White (Blue accent)
 Home Field/Capacity: Lubetkin Field at J. Malcolm Simon Stadium/1,000 (lighted; sprinturf surface)
 Affiliations: NCAA Division I, ECAC
 Conference: Great West Conference
 University President: Dr. Joel Bloom, EdD
 Director of Athletics: Lenny Kaplan
 Athletic Department Phone: 973-596-3636

WHY THE HIGHLANDERS?

The home of NJIT, University Heights, was formerly known as the Newark Highlands and NJIT's mailing address used to be High Street, until the thoroughfare was renamed in memory of Dr. Martin Luther King, Jr.

In 2006-07, NJIT athletics, in keeping with its move to NCAA Division I, unveiled a new graphic identity, which includes a new Highlanders logo (shown). Developed by CN Foundry for NJIT, the logo depicts the traditional Highlander, whose ferocity and bravery against all odds are the stuff of legend.

MEDIA RELATIONS

NJIT Athletics website: www.njithighlanders.com
 Assistant AD for Sports Information: Tim Camp
 Phone/Email: 973-596-8461/timothy.camp@njit.edu
 Assistant SID: Stephanie Pillari
 Phone/Email: 973-596-8324/pillari@njit.edu

MEDIA INFORMATION

This guide is designed to assist in coverage of NJIT women's soccer. For home matches, the NJIT sports information office will provide an official box score following each game. Coach Sergio Gonzalez and requested players will be available for interviews on the field following a 10-minute cooling off period. Radio broadcast requests should be made at least 10 business days prior to the contest. Requests for coach and player interviews on nongame days should be made through the NJIT sports information office (973-596-8461).

CREDITS

The 2012 NJIT Women's Soccer Media Guide is a production of the NJIT Sports Information Office in cooperation with the Office of Strategic Communications. Written and edited by Tim Camp and Stephanie Pillari. Cover and interior design by Karyn Olsen. NJIT photographs and information courtesy of Office of Strategic Communications. All interior team and action photography by Larry Levanti. Red Bull Arena photo (p. 17) courtesy of Getty Images/RBNI.

ON THE COVER:

Front cover: (left to right): Erin Morris, Meryl Hershfield, Gechi Ukaegbu
 Inside back cover: 2012 team photo

NJIT is New Jersey's Science & Technology University. With roots going back to 1881, when it was founded as Newark Technical School, New Jersey Institute of Technology observed its 125th anniversary in 2006.

Located in University Heights, Newark, NJ, home to more than 30,000 college students, NJIT's campus is just 10 miles from New York City.

Playing a critical role in shaping New Jersey's future, NJIT, as a major public technological university, is an important pipeline for the flow of technology into society. The university's educational programs prepare students to be leaders in the technology-dependent economy of the 21st century. University researchers seek new knowledge to improve processes and products for industry. Through public and private partnerships and economic development efforts, the university helps to grow new business ventures that fuel the economy.

In recent years, NJIT has put more than \$83 million toward new and improved buildings and facilities on the 45-acre campus, including biomedical engineering labs and a campus center.

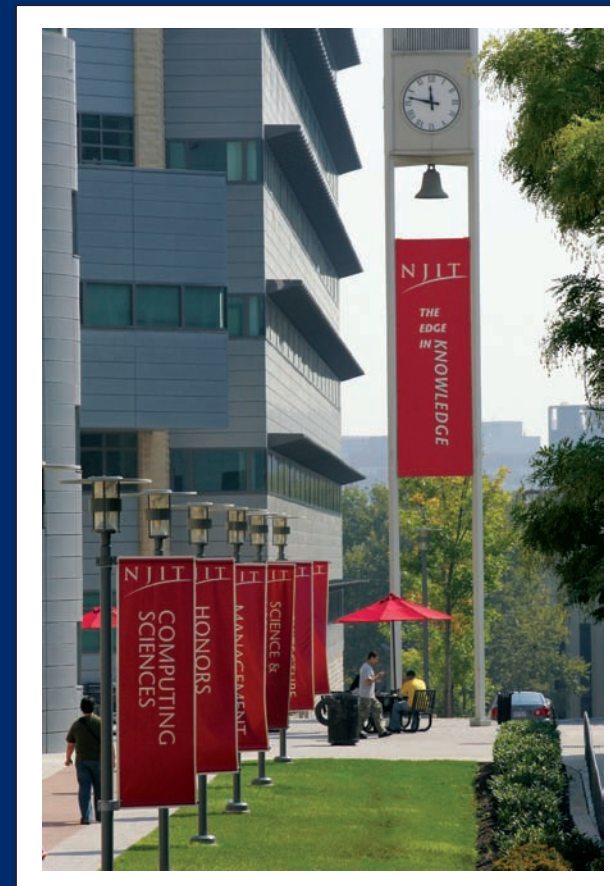
Instructional Programs

NJIT offers an ever-expanding array of educational programs, with eight new academic programs approved beginning in 2009-10, which comes after the addition of 14 new programs in 2008. As of 2009, NJIT lists 55 bachelor's degree majors, 53 master's degree programs and 19 doctoral programs — through six schools:

Newark College of Engineering
College of Architecture and Design
College of Science and Liberal Arts
School of Management
Albert Dorman Honors College
College of Computing Sciences

NJIT has 490 full-time faculty; more than 98 percent of whom hold the highest degree in their field. The student-faculty ratio is 16:1, with more than 7,125 undergraduate students and more than 2,825 graduate students. Our students hail from 33 states and more than 100 countries to rank eighth in the nation for diversity. Albert Dorman Honors College enrolls more than 500 students who take advantage of honors courses, research opportunities, advising and mentoring. Honors College students have SAT scores ranking in the top 10 percent nationally.

With more than 44,000 alumni, NJIT is rated by U.S. News and World Report as a top-tier research university offering bachelor's, master's and doctoral degrees.



Research

NJIT's research expenditures totaled more than \$100 million in 2011. As of June 30, 2011, NJIT had 134 issued patents, of which 60 are licensed to third parties.

Strategic Initiatives

The University's 2010-2015 strategic plans identify several focal areas for growth and development in education of young people and professionals.

- Sustainable Systems, including sustainable design, environmental science and engineering, ecology and alternative energy technologies.
- Digital Everywhere, including wireless telecommunications, social networks and cloud computing, network security and financial bubble research.
- Life and Healthcare Science and Engineering, including tissue engineering and adult stem cell research, rehabilitation medicine, biomedical informatics and data mining, and drug development and pharmaceutical manufacturing techniques.

On-going projects designed to enhance campus life and increase residential students on campus by 600:

- Warren Street Village at NJIT, which includes the Dorman Residential Honors College, 6-story facility with residence floors to house 360 honors scholars, as well as a common area with studying and other facilities to be used by commuter and residential honors students alike, designed to increase academic and social collaboration among honors scholars. The complex will also house five duplex town houses for Greek organizations and will have a restaurant, convenience store and a fitness center.
- The Gateway Project, which will integrate development of an enhanced University Heights neighborhood, envisioned with such improved amenities as enhanced housing and new commercial space with shops and restaurants.



Economic Development

NJIT is committed to economic development for Newark and the region. The university operates several outreach centers that provide direct technical assistance to the state's businesses with the goal of helping small and medium-sized companies. NJIT is also the home of New Jersey's oldest and largest incubator facility, and was one of the first institutions in the nation to adopt economic development as a fourth mission element, together with instruction, research and community service. More than 60 technology start-up companies, many of which hire NJIT students, are on campus.

The Career Edge

All 10 of the majors with the highest starting salaries for 2005-06 grads are in engineering, computing and business, according to the National Association of Colleges and Employers.

Computer and data processing services lead the list of the 10 fastest-growing occupations in projections compiled by the U.S. Department of Labor. Computer-related employment is expected to grow 117 percent by 2008, according to the Career Guide to Industries.

As technology changes all fields, those with science and technology backgrounds are positioned to lead. Among the CEOs of the S&P 500 companies, engineering is the single largest undergraduate degree and more than half of CEOs have undergraduate degrees in engineering, business management, science, math and computing.

The Global Edge

The high level of diversity in NJIT's student body and faculty prepares graduates to understand and succeed in the global marketplace. U.S. News ranks NJIT 10th among national universities for campus diversity.

NJIT was named among the top 500 world universities in a study by the Institute of Higher Education, Shanghai Jiao Tong University. Institutions were judged on quality of education, quality of faculty, research output and size; only 170 US institutions were ranked in the top 500.

The Technology Edge

NJIT has been designated as one of the nation's most technologically sophisticated universities by Forbes.com and a Princeton Review survey and the university has received major funding from the National Science Foundation and the National Security Agency in recent years.

The Academic Edge

NJIT has long been a national leader in applying new technologies and approaches to the education experience. NJIT was a pioneer in requiring computer science for students in all majors and the School of Architecture has led innovations in teaching CAD and digital design. The School's innovative "paperless" first-year program was recently cited by Campus Technology Magazine.

Students have a wide range of educational choices in building an interest-tailored program. Among their options are cross-enrolling at neighboring Rutgers to enrich their program with subjects such as music and languages.

NJIT students learn emerging technologies from researchers behind the technologies, developing valuable marketplace skills. Real-world experience through experiential learning makes graduates more marketable, with many co-op opportunities leading to permanent jobs.

The Regional Edge

New Jersey, with America's highest concentration of pharmaceutical, hi-tech, biotech, and medical device companies, is the place to study technology. It has the nation's highest per capita number of engineers and scientists as residents, while also leading in per capita rate of patents issued. Further, the Newark-New York region is a living laboratory for architecture and building sciences, environmental engineering and transportation.





The Research Edge

NJIT has been designated by the State of New Jersey as the Homeland Security Technology Systems Center and NJIT operates the world-renowned Big Bear Solar Observatory.

A History of NJIT

From the Industrial Revolution to the Information Age, New Jersey Institute of Technology has a rich history with its beginnings developing from the industrial age.

In 1881, an act of the New Jersey State Legislature, recognizing an urgent need, sought a home for what would be the state's technical school. The efforts of Newark's public and private sectors resulted with the opening of Newark Technical School, addressing the state's need.

Over time, the university expanded its curriculum and mission. In 1919, the university established baccalaureate programs in three engineering fields. By the middle of the 20th century, Newark Technical School was transformed into the robust Newark College of Engineering.

The post-war period was one of enormous activity with regular expansion of the campus, as well as the introduction of doctoral level programs. In 1975, with the addition of the New Jersey School of Architecture, the institution had evolved into a technological university, emphasizing a broad range of degrees and dedication to significant research and public service. Newark College of Engineering, stronger than ever, remained intact, but a new university name — New Jersey Institute of Technology — reflected the institution's expanded mission.

A broadened mission called for the creation of a residential campus and the opening of NJIT's first dormitory in 1980 began a period of steady growth that continues. Two new schools were established during the 1980s—the College of Science and Liberal Arts (1982) and the School of Industrial Management (1988). The Albert Dorman Honors College was established in 1994, and the newest school, the College of Computing Sciences, was created in 2001. Beginning in 2009 the College of Architecture and Design was created to house the New Jersey School of Architecture and the new school of Art and Design.



Dr. Joel Bloom President

On January 9, 2012, the New Jersey Institute of Technology Board of Trustees voted unanimously to appoint Dr. Joel Bloom as President of the University, effective immediately.

Dr. Bloom, had been serving as Interim President of NJIT since September

28, 2011, following the resignation of the previous president, Robert A. Altenkirch, who had been in that post since July 2002.

Speaking for the NJIT Board of Trustees, Kathleen Wielkopolski said: "It is in the best interest of the university to appoint a president at the earliest possible date to provide stability and continuity to the important work of the university; that is, educating New Jersey's future science and technology leaders, responding to opportunities presented by the governor for workforce and economic development, building NJIT's national academic and research reputation, and proceeding with our ongoing significant fund raising initiatives, specifically, the \$150 million 'NJIT NEXT' campaign."

Bloom, who is NJIT Vice President for Academic and Student Services, as well as founding dean of the Albert Dorman Honors College, is well-positioned to take on this leadership role. Bloom, with a career spanning 20 years at NJIT, is passionate about the university and its students as their education in the sciences, engineering, technology, design and management transforms their future and that of their families.

As Vice President for Academic and Student Services, Dr. Bloom is responsible for eight divisions of the university, including physical education and athletics. In that role, his guidance has been vital in NJIT's transition in intercollegiate athletics to NCAA Division I from Division II, an endeavor that began in earnest following November 2002 discussions among Dr. Bloom, then-President Altenkirch, and Director of Athletics Lenny Kaplan. The transition reached official fruition on September 1, 2009, when the NCAA embraced NJIT as an across-the-board active (full) member of Division I following completion of a rigorous formal process.

Bloom's impact on the university has been significant. Under his watch, student enrollment increased from 7,600 to over 9,500 students, including increases in female and minority students. The average SAT math score is now in the top quarter nationally; Dorman Honors College enrollment increased 70 percent, totaling 685 with combined average SAT scores over 1335 for fall 2011; articulation agreements are currently signed with the state's high-tech high schools and 19 county colleges; and accelerated joint admission agreements exist with UMDNJ Medical and Dental Schools, St. George's Medical School, SUNY College of Optometry and Seton Hall Law School.

In his role as dean of the Dorman Honors College and Vice President for Student and Academic Services, Bloom has been integral in helping to shape the academic plan for the university. Further, Bloom is leading the development of a Dorman Residential Honors College and the planning for a Greek Village in collaboration with Greek alumni and currently enrolled students. Previously, Bloom led the successful effort to raise \$23M for Dorman Honors College scholarships.

Bloom expanded the Center for Pre-College Programs to help prepare students for the rigors of science, mathematics, engineering and technology education; with the college deans and faculty, he expanded honors courses and undergraduate research, established the university's medical and health committee of faculty to advise and assist undergraduate students entry into graduate and professional schools and to coordinate the health-related NJIT disciplines; he increased retention and graduation rates, and planned residence halls that transformed a commuter campus to one with more than 50 percent of the freshmen living on campus.

As the university proceeds to implement a major comprehensive fundraising campaign, "Dr. Bloom brings an understanding of the university, its history and contacts, and will provide the necessary continuity needed at this time," said Trustee Wielkopolski.

Bloom has served the Newark community through his participation in the development of Science Park High School. He has also initiated multiple programs with the Newark Public Schools, most recently with the new Central High School—yielding the largest number of enrolled NJIT

freshmen from the school. For over a decade, he has served as vice chair of the board for Community and Schools, a national dropout prevention program serving Newark and other urban school districts. He is active in many education organizations including The NJ Presidents' Council Executive Board for New Jersey Edgnet and the executive board of the NSF-funded Philadelphia Alliance for Minority Participation.

He has received national and state education awards, as well as federal, foundation and corporate grant awards. He has published journal articles and presented papers on school improvement, curriculum development, college transition and student assessment.

Prior to joining NJIT, Bloom served seven years as an assistant commissioner for the New Jersey Department of Education for the Division of General Academic Education. He was responsible for managing many of the education department's initiatives during Governor Thomas Kean's administration and was responsible for statewide assessment, curriculum standards, math/science/technology education, and the improvement of urban education through piloting the Effective Schools research and Alternative Education programs.

Formerly a teacher and school administrator in New York City Public Schools, Dr. Bloom was also a director of research and instructor at Teacher's College, Columbia University.

He holds a master's degree and a doctorate from Teacher's College, Columbia University. He also earned master's and bachelor's degrees from Hunter College of the City University of New York.

Upon becoming Interim President, Dr. Bloom announced that Jack Gentul, Dean of Students, will serve as Interim Vice President for Academic and Student Services and that Distinguished Professor of Electrical and Computer Engineering, Atam Dhawan, currently the Associate Dean of the Albert Dorman Honors College, will become the Interim Dean.



Charles J. Fey *Vice President for Academic and Student Services*

Dr. Charles J Fey, joined NJIT with 39 years of leadership experience in student services as the new NJIT Vice President of Academic and Student Support Service in September 2012.

Previously, he was Vice President for student engagement and success and a professor in the graduate school at the University of Akron where he managed a \$53 million divisional budget, a student affairs staff of 386 members, supervised three associate vice presidents, two assistant vice presidents plus fund-raised through gifts and grant-writing.

Fey's four years at Akron followed a decade of service at the University of Maryland Baltimore Campus (UMBC), a research extensive university and member of the University System of Maryland. UMBC is best known for its undergraduate honors college. His last position was as vice president for student affairs. More than 20 years of student support service experiences at six other institutions of higher learning preceded this position.

His proudest recent achievement was the creation and management of the Akron Experience, a signature program designed to advance total student learning and engagement to help students make intellectual connections between in-class and out-of-class learning while insuring pathways of success.

While there, he also partnered with the Provost on projects to enhance the equality of student life and the student experience. These efforts resulted in the creation of living/learning communities which were so remarkable that they have received national recognition. The out of the classroom experiences created and implemented by members of his division resulted in Akron being named the "Campus of the Year" award from Campus Activities magazine.

At UMBC, three programs resulted in markedly higher retention and graduation rates--the latter from 54 to 61 percent. He partnered with the provost, faculty members and residence life staff to expand a successful residence hall faculty-mentoring

program and living learning and communities and oversaw the establishment of a learning community for commuter students.

Working with the Provost's Office, he and a Vice Provost developed a first-year experience program featuring a traditional credit-bearing course which resulted in the establishment of an undergraduate education office.

Fey received his EdD in the administration of higher education from Texas A&M University. He received both his BA in liberal arts from Pennsylvania State University as well as his Master of Education in counselor/education/college student personal services. He did post master's degree coursework in business management and higher education at Catholic University.



Lenny Kaplan *Director of Athletics*

Since taking Since taking over as head of NJIT's division of physical education and athletics in August 2000, Lenny Kaplan has been instrumental in guiding NJIT's reclassification to NCAA Division I.

Kaplan helped stabilize and expand a program that was entering its fourth year in Division II when he arrived in Newark.

In late 2002, after discussions with university President Dr. Robert A. Altenkirch and Vice President Dr. Joel Bloom, Kaplan took on the task of steering NJIT's programs into Division I, a process that reached fruition with the NCAA's granting active Division I status, with full championship eligibility effective September 1, 2009.

Throughout Kaplan's tenure, NJIT has enhanced the athletics program, particularly in areas that benefit the student-athletes directly.

The sports offerings have expanded to the current 18 varsity programs. And since 2004, NJIT has renovated its two main on-campus venues—Lubetkin Field at J. Malcolm Simon Stadium at Lubetkin Field and the Estelle and Zoom Fleisher Athletic Center. Further, the Naimoli Family Recreation Center, a 25,600-square foot facility opened early in 2011 enhanced the recreational and intercollegiate opportunities on campus.

The school also signed a 10-year partnership to play all home baseball in the professional Bears and Eagles Riverfront Stadium

and later agreed to host basketball in the new Prudential Center, downtown Newark home of the NHL's New Jersey Devils.

Under Kaplan's leadership, many teams achieved regional and national Division II ranking. Success for several women's teams was unprecedented, with basketball, tennis and soccer all reaching postseason play for the first time in his administration,

Additionally, men's volleyball captured a 2007 divisional championship in the Eastern Intercollegiate Volleyball Association and the next year reached the EIVA playoff semifinals hosted by eventual 2008 national champion Penn State.

Kaplan guided the Highlanders toward further stability with membership in the newly-expanded all-sports Great West Conference, which offers a conference home for 11 of NJIT's varsity sports.

In 2009-10, NJIT's first year as a full active member of Division I, the women's volleyball team and senior Sabrina Baby became the school's first national statistical champions at the Division I level, as team and individual leaders, respectively, digs per set. Baby was honored as the school's first CoSIDA Academic All-America in the Division I era, earning third-team national honors.

Christian Baumbach, a sophomore at the time, made history in 2009 as NJIT's first individual conference champion at the Division I level, when he won the Great West Conference men's cross country race. He also won the prestigious IC4A University Division race in the 101st annual running of that contest.

In 2010-11, the Highlanders earned their first-ever Division I conference team championship when women's tennis captured the Great West title in May.

NJIT's outstanding home facilities will allow it to host conference championships in the Great West Conference and allowed it to host ECAC postseason championships in 2005-06.

Before coming to NJIT, Lenny Kaplan served 11 years at Manhattan College, where he began as Manhattan's director of operations and was assistant athletics director from 1991-2000.

Kaplan, a 1988 graduate of St. John's University with a degree in athletics administration, resides in Merrick, NY, with his wife, Nancy, and their sons, Michael and Joshua.

Sports Medicine

NJIT sports medicine is moving forward with expanded facilities and a staff of three full-time trainers led by head trainer Matt Koscs, MS/ATC, with assistant trainers Paul Grayner, MEd/ATC, and Sandra Brendle, MEd/ATC. They work with team physicians Louis Rizio, MD, and Stephen Matta, DO.

Matt Koscs, who earned both his bachelor's and master's degrees from the University of Delaware, has served NJIT as head trainer since July 2009, a year after he joined the staff as an assistant trainer. As an undergrad at Delaware, he was recipient of the Paris Delligatti Memorial Award for Excellence in Athletic Training.

Prior to NJIT, he served three years as head trainer at Hodgson Vocational Technical High School in Newark, DE. He also worked with soccer clubs in Delaware and was employed at Christiana Care Physical Therapy Plus, in Newark, DE.

Paul Grayner, who holds a bachelor's degree from Saint Leo College in Florida and a master's from American University in Washington, DC, has a diverse background in athletic training, having served at the college and professional levels, as well as in a fitness center setting. He joined the NJIT staff late in 2008.

From the mid-1970s to the mid-1980s, he was a trainer in the minor league systems of the New York Yankees and New York Mets and in 1984 he was assistant trainer with the Mets. He later worked with the Long Island Knights professional basketball team.

At the collegiate level, he was head trainer at Fairleigh Dickinson University in Teaneck, NJ from 1989 to 1998 and earlier worked as an assistant trainer at Hofstra, Adelphi and FDU.

Brittany Vorndran, who joined the NJIT staff as an assistant athletic trainer in the summer of 2012, earned her bachelor's degree, majoring in athletic training, from Bridgewater (MA) State College in 2010 and was the school's 2008-09 Athletic Training Student of the Year.

She earned her master's in Kinesiology at James Madison University in Harrisonburg, VA, in May 2012. At James Madison, she worked with the cross country, track and field, tennis and cheerleading teams.

A resident of Millville, NJ, she has worked as a substitute teacher for the Millville Board of Education

Dr. Louis Rizio is a board certified orthopedic surgeon and is fellowship trained in the field of sports medicine. He is a graduate of Rutgers and after earning his medical degree from the UMDNJ/New Jersey Medical School, Dr. Rizio completed his orthopedic residency at Tufts University in Boston.

He then completed a sports medicine fellowship at the University of Miami and was assistant team physician of the Hurricanes, as well as the Miami Dolphins, the Miami Hurricanes.

Dr. Rizio practices at the New Jersey Sports Medicine Institute in Livingston, NJ. Prior to starting his own practice, Dr Rizio was the Chief of Sports Medicine at the NJ Medical School from 2000-2005. He is affiliated with four New Jersey hospitals: St. Barnabas Medical Center (Livingston); Short Hills Medical Center (Short Hills); Mountainside Hospital (Montclair); and, Overlook Hospital (Summit).

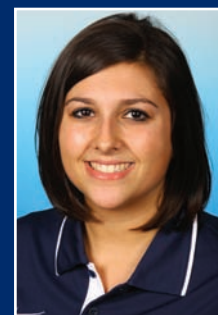
Dr. Stephen Matta, who is board certified in family medicine, currently specializes in primary care sports medicine at Mountainside Hospital in Montclair, NJ, a post he assumed after three years in the family practice residency program at Valley Baptist Medical Center in Harlingen, TX. He is a 2007 graduate of a five-year DO/MBA dual degree program with Philadelphia College of Osteopathic Medicine for his medical degree and Saint Joseph's University for an



Matt Koscs



Paul Grayner



Brittany Vorndran



Dan Huff

MBA in healthcare administration. He is a 2002 magna cum laude graduate of Duquesne University in Pittsburgh, with a BS in honors chemistry. He and his family reside in Belleville, NJ.

Strength and Conditioning

Strength and conditioning is a key part of a successful Division I program, with an eye toward maximizing individual and team performance in competition. The strength and conditioning coach also works closely with the Athletic Training Staff in the areas of injury prevention and injury rehabilitation.

The 2008-09 year brought another dimension to NJIT athletics with the hiring of *Dan Huff*, CSCS, as the program's first full-time strength and conditioning coach. In addition to the hiring of a full-time coach to coordinate the strength and conditioning, NJIT renovated the weight rooms and purchased new equipment, with the area dedicated to use by the Highlander teams.

Huff previously served five years as strength and conditioning coordinator at Fairleigh Dickinson University in Teaneck, NJ, from 2003 to 2008, working with an 18-sport NCAA Division I program.

Huff was Sports Performance Director for Velocity Sports Performance in Wall, NJ, immediately before accepting his position at NJIT. He is a graduate of William Paterson University of New Jersey. He holds numerous certifications.

ADMINISTRATION



Sandra Taylor



Elizabeth Bookwalter

Academic Enrichment

NJIT's Center for Academic and Personal Enrichment (CAPE) added a new component in 2007 with the addition of an Associate Director position that was created for the specific purpose of serving the needs of NJIT's student-athletes.

The position focuses on five key areas: academic support, career development, personal development, leadership and community service including the Student-Athlete Advisory Committee and CHAMPS Life Skills for NJIT's nearly 300 student-athletes.

Sandra Taylor filled the post in January 2010, having previously spent her professional career at Manhattan College, which is also her alma mater.

Working at Manhattan, a founding member of the Metro Atlantic Athletic Conference, Taylor was most recently Associate Director of Athletics and Senior Woman Administrator, filling those posts from 1996 to 2010.

For much of that time (1995-2003), she was Chief Athletic Department Compliance Officer. She began her service at Manhattan as Athletic Department Ticket Manager, serving in that capacity from 1993 to 2003.

She served on numerous NCAA, conference and internal college committees, including service on the NCAA Division I Management Council from 2004 to 2007 and as chair of the NCAA Women's Lacrosse Committee from 2002 to 2006.

She earned both her bachelor's degree in secondary education and her master's degree in special education from Manhattan College and is a doctoral candidate in educational leadership at St. Mary's University in Winona, MN.

Sandra and her husband, Ken, who is Associate Commissioner for Men's Basketball and Baseball at the MAAC, reside in Monroe Township, NJ, with their daughters, Katherine, who was born in May 2004, and Samantha, who was born in July 2009.

New to the staff in 2011-12 is *Elizabeth Bookwalter*, the eligibility certification officer/academic advisor, who brings a wealth of experience to her post at NJIT.

Most recently before coming to NJIT, she worked from March 2009 to 2011 in the NCAA Eligibility Center as Associate Director of Client Relations/Coordinator of Customer Service.

She is a journalism graduate of The Ohio State University and she earned her master's degree from the University of Tennessee with a concentration in sport management.

At Ohio State, she was a student intern in the Athletic Communications Office and she was a graduate assistant for compliance at Tennessee, while also working as a project leader/project assistant for the legal firm Vorys, Sater, Seymour and Pease, LLP.

She began full-time work in NCAA compliance at American University in Washington, DC, in 2006, before joining the compliance office at Florida State University, where she served from September 2006 to March 2009.

NJIT's Center for Academic and Personal Enrichment, headed by Dr. Marybeth Boger, is a resource available to all students within NJIT's Student Services Division. The CAPE provides academic support services and activities to enhance students' academic and professional development and it works with academic and administrative departments to help students develop the necessary analytical and problem-solving skills to become independent learners.

CAPE provides tutoring, student success workshops and testing accommodations.

ATHLETICS SENIOR STAFF



Alexis Schug

Assoc. Director of Athletics/SWA
(973) 596-8452 schug@njit.edu



Joe Caiola

Asst. Director of Athletics/Business & Facilities
(973) 642-7224 caiola@adm.njit.edu



Tim Camp

Asst. Director of Athletics/Sports Information
(973) 596-8461 timothy.camp@njit.edu



Marion Johnson

Asst. Director of Athletics/Compliance
(973) 596-5278 johnsonm@adm.njit.edu



Jenny Cisló

Beginning on September 1, 2009, the entire NJIT athletics program officially gained across-the-board active membership in NCAA Division I, completing a process that began officially in 2003.

NJIT, its teams, and student-athletes enjoy the full benefits of Division I membership, including eligibility for Division I postseason championship competition and the inclusion of the Highlanders among the national Division I leaders in statistics maintained by the NCAA.

Within months of NJIT's active Division I membership, the school won its first national Division I statistical championships, as women's volleyball player Sabrina Baby led the nation in digs per set, while she and her

teammates captured the team digs crown for digs, as well.

The NCAA's decision making NJIT a full member of Division I completed a specific timetable that required NJIT and its Department of Athletics to meet a series of annual benchmarks before proceeding to the next step.

NJIT, which previously competed in NCAA Division II, first moved to reclassify its men's soccer program in 2003. The move grew out of November 2002 meetings among President Robert A. Altenkirch, Vice President Joel Bloom, and Director of Athletics Lenny Kaplan. From there, came a proposal from Dr. Altenkirch to the Board of Trustees, which unanimously approved in February 2003 a plan to reclassify men's soccer to Division I. Little more than two years later, the NCAA approved NJIT's proposal to begin advancing its entire program to Division I.

Men's soccer achieved active Division I status in 2005 and NJIT women's soccer became postseason-eligible in 2007. The remainder of NJIT's athletics program also began reclassifying in 2005, with active status taking longer for an entire program than under the single-sport-per-gender track used for the two soccer teams.

In 2005-06 the lion's share of the competition for all but men's soccer came at the Division II level. In 2006-07, 2007-08, and 2008-09, NJIT's teams competed at the Division I level and complied full with NCAA Division I rules, but were not eligible for championships at the top level.

Every facet of the program has been enhanced in the reclassification, with a special emphasis placed on student-athlete welfare. Facility upgrades have gone along with sports medicine staff expansion, a strength

and conditioning program, and academic enrichment. NJIT has also built a model NCAA Division I rules compliance regimen within its athletics program and across the entire university.

A key late benchmark in reclassification came in the spring of 2009, with NJIT's successful completion of the NCAA Division I certification self-study. An in-depth project that takes approximately one year to complete and involves an on-campus visit from a Peer Review team, Division I certification, renewable every 10 years, is required of all active Division I institutions.

"We completed a major milestone in demonstrating that we have the infrastructure in place and the commitment to compete at the highest levels, not only academically



Amanda Redden

but now athletically as well,” said Dr. Altenkirch, who made upgrading athletics a priority from the beginning of his tenure as the seventh President of NJIT in May 2002.

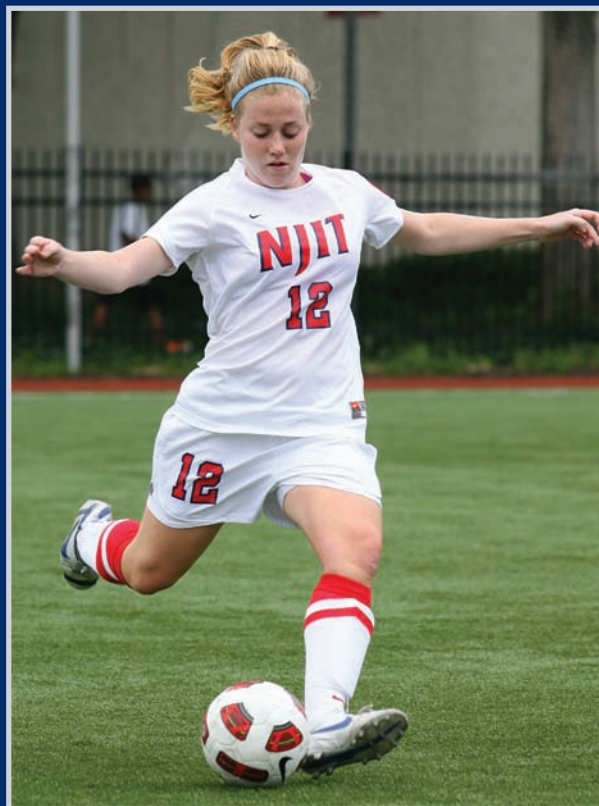
Professor Robert English, the NCAA Faculty Athletics Representative and Interim Dean of the School of Management, added, “I am very impressed with NJIT’s student-athletes who have worked hard to meet the challenge of the heightened level of Division I competition and at the same time continued to excel academically, with many athletes earning academic honors and awards and several earning perfect 4.0 GPAs during the semester of competition.”

Further, the NJIT Board of Trustees embraced the transition to Division I as part of the university’s strategic plan to enhance the quality of campus life in NJIT’s transition to a residential university.

Going back to early announcements of NJIT’s NCAA reclassification plans, Altenkirch stated: “As NJIT continues to grow academically, and as a residential university, strengthening the athletics program through the transition to Division I will allow us to align the university with our academic peers.”

Already, NJIT’s teams have competed throughout the United States, taking on opponents from schools that are instantly recognizable for their stature in academics and athletics.

NJIT teams and student-athletes have faced opponents from seven of the eight Ivy League schools (all except for Brown, which will be the opening opponent for Highlander women’s basketball in 2011-12) and all eight



Erin Schmitt

Patriot League schools, including Army and Navy, Bucknell, Lafayette, and Lehigh.

In addition, Highlander teams have taken on squads from such famed conferences as the Atlantic Coast Conference, Big East Conference, Big Ten Conference, Big 12 Conference, and Pac 10 Conference.

Two high-profile opponents--Maryland in men’s soccer in 2005 and Penn State in men’s volleyball in 2008—won national championships following the same regular seasons in which they faced NJIT.

The Highlanders have also competed against members of all of the conferences based in the Northeastern and Mid-Atlantic regions of the United States, including America East, Atlantic 10, Colonial, Metro Atlantic, Mid-Eastern, and Northeast.

The eighth New Jersey-based institution in Division I, NJIT has competed against all seven of its home state peers, including Big East programs Rutgers and Seton Hall.

NJIT’s longest-established Division I program, men’s soccer, gained its first win against a Big East foe in 2008, defeating Rutgers a year after topping San Diego State for the Highlanders’ first win over a Top 25-ranked team.

NJIT began play as a core member of its first Division I conference, the Great West Conference, which began full competition in 2009-10. In the spring of 2011, the second season for the GWC, the Highlanders celebrated their first Division I team championship, when women’s tennis captured the Great West title.

With its place in Division I officially certified by the NCAA, NJIT looks ahead to continued growth. That outlook is consistent with President Altenkirch’s frequently expressed view that, “the transition to Division I is just that, a transition, a process rather than an event.”

For his part, Director of Athletics Lenny Kaplan said: “We are looking forward to being a solid and successful member of Division I and we are excited by the opportunity to write a new chapter in the history of NJIT athletics.”

The New Jersey Institute of Technology teams play home games and practice in a combination of facilities on campus and off.

The on-campus facilities include Lubetkin Field at J. Malcolm Simon Stadium for outdoor sports and the Estelle and Zoom Fleisher Athletic Center for indoor sports. In addition, NJIT in 2011 opened is the Naimoli Family Athletic and Recreational Facility, a multi-purpose indoor facility on the site of the former outdoor tennis courts.

Off-campus venues include Bears and Eagles Riverfront Stadium, a professional minor league stadium that is the home of NJIT baseball; the Prudential Center, home of the NHL Devils and NBA Nets, which has hosted selected NJIT basketball games; and, Branch Brook Park in Newark and Van Cortlandt Park in the Bronx, home sites for NJIT cross country. All except for Van Cortlandt Park are less than two miles from the NJIT campus.

Lubetkin Field at J. Malcolm Simon Stadium

The men's and women's soccer teams play their home games and practice on campus at Lubetkin Field at J. Malcolm Simon Stadium, a first-class venue for college soccer.

The field on the west end of NJIT's University Heights campus is an all-weather facility, with 24/7 availability for competition or practice. Outfitted with SprinTurf artificial grass in the summer of 2004, Lubetkin Field at J. Malcolm Simon Stadium also includes lighting for night contests, bleacher seating for more than 1,000 spectators, a press box and scoreboard.

The fully-enclosed facility, with its entrance a few feet opposite the entrance of the indoor Estelle and Zoom Fleisher Athletic Center, can take its place alongside any college soccer facility in the Northeast.

The home of Highlanders soccer served as the host site for the first-ever Great West Conference women's soccer championship tournament in November 2009. Previously, NJIT hosted the three-day 2005 ECAC Division II women's soccer championship tournament.

In the fall of 2005, when the Northeast was hit with record rainfall, games went on without a hitch at Lubetkin Field, thanks to the quality of the surface. Indeed, with the rain disrupting schedules around the region, some crucial Big East contests involving Seton Hall were moved to NJIT's home field. Those games, too, went off without a hitch.



Lubetkin Field at J. Malcolm Simon Stadium

Estelle and Zoom Fleisher Athletic Center

The NJIT men's and women's basketball teams and men's and women's volleyball teams play their home games in the Fleisher Athletic Center gymnasium, while the swimming team competes and practices in building's pool. The Fleisher Center also houses intercollegiate fencing, as well as all athletic department offices, varsity and general weight and fitness rooms, and the athletic training room.

In the summer of 2006, the gym underwent renovation to include installation of a new floor and baskets, new lighting, new sound system and new scoreboards, along with entirely new seating for approximately 1,500 spectators after the first phase of renovation. The back bay 'C gym' can be sectioned off from the main competition floor, making the facility useful for intramurals, physical education classes and campus recreation time, while being able to host multiple simultaneous events.

A six-lane swimming pool in Fleisher Athletic Center is home to the NJIT swimming team. Fencing has its own area on the second floor of the building.

In addition to all athletic department offices, the Fleisher Athletic Center also houses the sports medicine staff in the Athletic Training Room and the varsity weight room, supervised by the head strength and condition coach. The building's third floor is home to a fitness center, which is open for use by all students and staff.

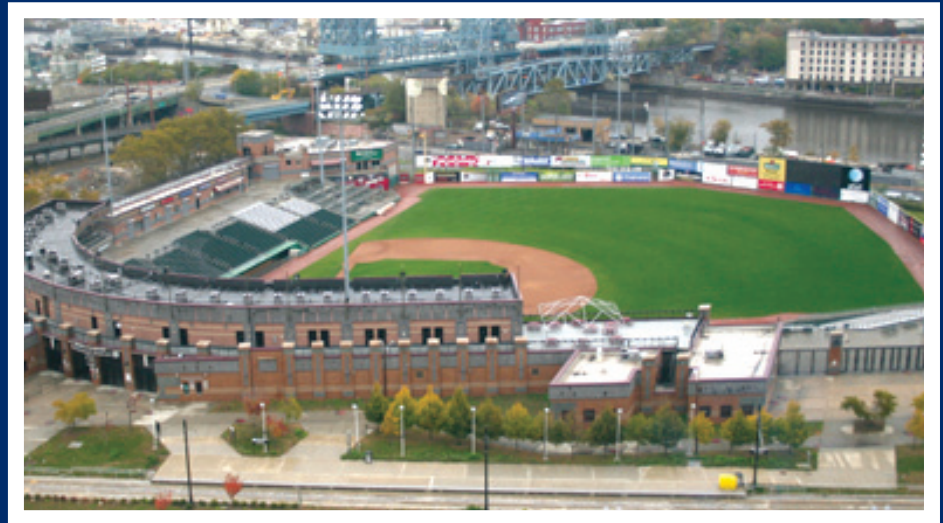
The Naimoli Family Athletic & Recreation Facility

Opened in 2011, the facility is approximately 25,600 square feet. The Naimoli Family Center will be a multi-purpose space for athletics, community recreation, and gatherings involving large numbers of people.

Built on top of the old outdoor tennis courts adjoining the Fleisher Athletic Center, construction of this new building has been made possible, in part, by a generous gift from Vincent Naimoli '62, Chairman and CEO of Anchor



Soccer locker room at Estelle and Zoom Fleisher Athletic Center



Bears and Eagles Riverfront Stadium

Industries International and Chairman Emeritus/Founder of the Tampa Bay Rays major league baseball team.

The facility houses courts for tennis and is available for other athletic and recreational activities, including practice for basketball and volleyball. It is heated and air conditioned, with flooring appropriate for the intended athletics and recreational activities.

Its indoor tennis courts offer vital year round practice and playing opportunities for NJIT's intercollegiate tennis teams, which have been consistently successful in the transition to Division I. In 2011, the women's tennis team became NJIT's first conference championship team in the Division I era.

Bears and Eagles Riverfront Stadium: Home of the NJIT Highlanders

Joe Torre, then the manager of the New York Yankees, visited New Jersey Institute of Technology on December 8, 2005 to herald a new partnership between NJIT's baseball team, the Highlanders, and the Newark Bears.

Torre, a friend of the Bears and of college baseball, was on hand as the Highlanders signed a 10-year contract to play their home games at Bears & Eagles Riverfront Stadium in Newark.

"I think this partnership is nothing but aces," Torre said during a press conference at NJIT. "It's a partnership between two class organizations that will make for nothing but a lot of fun for everyone."

For the previous two years, the Highlanders played their home games at the stadium. But the team's longer-term commitment to play at the stadium came as NJIT elevated its baseball program to Division I.

"NJIT is bringing Division I baseball to this great stadium," said NJIT President Robert A. Altenkirch, "which will generate the highest level of excitement. It's a great partnership that allows NJIT to play intercollegiate baseball in a great facility, maybe the best for college baseball in the country."

Bears and Eagles Riverfront Stadium, the \$30 million state-of-the-art home of the Newark Bears, officially opened to the public on July 16, 1999.

With a seating capacity of 6,200 Bears and Eagles Riverfront Stadium affords everyone in attendance an up-close view of the action. The ballpark also has 20 luxury suites, a picnic area, a party deck, a concert stage situated behind the outfield wall and a major league-caliber press box featuring two radio booths and two television booths.

The name, Bears and Eagles Riverfront Stadium, honors Newark's rich baseball history. The original Bears were a farm team for the New York Yankees up until 1949 and the Eagles were a very successful Negro League team that played in Newark until 1950.



Prudential Center

In October 2007, the Prudential Center ushered in a new era in sports and entertainment in Newark and the entire northern New Jersey area.

Prudential Center is the cornerstone in the revitalization and renaissance of downtown Newark. In addition to the arena, Newark will soon add scores of condominiums, restaurants, themed bars and mixed retail establishments. Prudential Center, one of the finest arenas in the country, is New Jersey's home for hockey, basketball, concerts and numerous other events.

A public/private partnership between the City of Newark and Devils Arena Entertainment made the \$375 million Prudential Center a reality that is changing the face of downtown Newark and making it a destination place for sports and live entertainment in the region.

"The Rock" is located about a mile from NJIT's University Heights campus and is known best as the home of the National Hockey League New Jersey Devils and the former home of the National Basketball Association New Jersey Nets.

The arrival of the spectacular Prudential Center nearly coincided with NJIT's arrival as an NCAA Division I institution--the first in Newark and the newest in New Jersey in more than 20 years. The Rock opened one year after NJIT began Division I competition as part of its NCAA reclassification which is now complete.

In the arena's inaugural year, NJIT played host to six basketball games on four dates, including four men's basketball games and two women's games. Included was the first women's basketball game in the building's history, when the Highlanders entertained Cornell on January 15, 2008.

The Highlanders hosted additional basketball games in subsequent years and have played there each year of the building's existence. Further, NJIT's club ice hockey team plays all of its home games

in the full-size Devils practice rink facility (AmeriHealth Pavilion), which adjoins the main arena and has an 800-seat capacity. And one of the special events held in the main arena is NJIT's annual commencement.

Branch Brook Park and Van Cortlandt Park

A hallmark of the NJIT cross country program under veteran coach Al Alonso is its ability to host cross country competition that have made Highlander-sponsored races a popular destination for schools from throughout the New York/New Jersey area.

In 2009, NJIT hosted the Great West Conference championships at Van Cortlandt Park in the Bronx, and the course, which is home to some of the most prestigious events in the sport, is also the home venue for other annual NJIT-hosted races. Branch Brook Park, which is a public park of Essex County, reaches into several towns, including Newark, with the park entrance less than a mile from the NJIT campus.

ABOUT NEWARK



Newark: The Renaissance City

NJIT is located in the heart of New Jersey's largest city, Newark, with a population of over 300,000, making it the 65th-largest city in the United States. A major urban center, Newark is a city on the move.

Attractions in Newark include:

- **The Prudential Center, a major indoor entertainment and sports venue housing New Jersey Devils hockey, New Jersey Nets basketball, major concerts and other premier events**
- **New Jersey Performing Arts Center**
- **The Newark Museum**
- **The Newark Public Library**
- **Symphony Hall**
- **Branch Brook Park**
- **Art galleries, restaurants, shopping**
- **The Ironbound neighborhood, renowned for its dining and vibrant nightlife**
- **An urban architectural laboratory**
- **Professional minor league baseball (Newark Bears)**

Newark: New Jersey's College Town

Some 30,000 undergraduate, graduate, and professional students attend classes in the University Heights section, which is home to NJIT, Rutgers-Newark, the University of Medicine and Dentistry of New Jersey (UMDNJ), and Essex County College.

Adjacent to NJIT to the east, is the Newark campus of Rutgers University and the two schools enjoy an exceptionally close and productive relationship. NJIT and Rutgers students have library privileges at both campuses. NJIT students may also enrich their educational experience by enrolling in Rutgers-Newark courses and in full degree programs in disciplines not offered by NJIT, such as art, music, geology, and psychology.

Each year, the two universities co-sponsor a common season of theatrical productions, as well as 'World Week,' a joint program of honors colloquia, and a variety of other cultural and social activities.

NJIT also enjoys a cooperative relationship with its neighbor to the west in the University Heights area, UMDNJ, with several joint degree programs.

New Jersey/New York Metropolitan Region

NJIT and Newark are a part of a region that is a magnet not only to the rest of the United States, but also to the world.

In Newark and neighboring northern New Jersey alone, attractions such as the Prudential Center, New Jersey Performing Arts Center, Meadowlands Sports Complex, Red Bull Arena, Liberty Science Center, and numerous others are minutes away by car and in most cases accessible by public transportation. Literally dozens of shopping malls are within a 20-minute drive of Newark, as well.

Midtown Manhattan, with all that it and the rest of New York City offer, is less than 15 miles from the NJIT campus.

NJIT students have regular access to discount tickets for Broadway shows, museums, concerts, and sporting events.

The school also sponsors weekend trips throughout the northeastern United States, with activities such as skiing, boating, swimming, hiking, and more.

The spectacular Jersey shore is less than an hour away by car and winter sports are within a couple of hours drive to the west and north.

NJIT, with its campus in Newark, NJ, sits in a region that abounds with major professional sports unlike any other in the United States and perhaps in the world. There are nine teams in the major professional leagues (MLB, NFL, NBA, and NHL) located in New York City, northern New Jersey and Long Island.

Only one of nine major teams is more than 25 miles from Newark, but most, including the New Meadowlands Stadium (Giants and Jets NFL football), Madison Square Garden (NBA Knicks, NHL Rangers), are much closer.

The three closest professional sports venues (listed below) are within three miles of NJIT's campus and can be accessed in a matter of minutes at low cost by public transportation, beginning with Newark Light Rail, from campus.

Prudential Center

The home of the National Hockey League New Jersey Devils and the New Jersey Nets of the National Basketball Association is in downtown Newark at the corner of Mulberry and Edison streets, about one mile from the NJIT's University Heights campus.

Opened in October 2007, 'The Rock' is the centerpiece of the city's Downtown Core Redevelopment Project. In addition to NHL hockey and NBA basketball, it has hosted numerous entertainment and sporting events, including NJIT basketball.

NJIT played basketball in the Rock in the inaugural year and in each year since. Indeed, NJIT hosted the first women's basketball game ever played in the Prudential Center on January 15, 2008 (NJIT vs. Cornell).

The arena, with full-capacity seating for 18,500 spectators, features a 4,800 square-foot exterior LED screen, as well as the latest in ice-surface technology and a gourmet restaurant overlooking the ice for Devils games. The building contains 850,000 square feet of space, 9,000 tons of steel, eight million pounds of structural steel and 25,000 cubic yards of concrete.





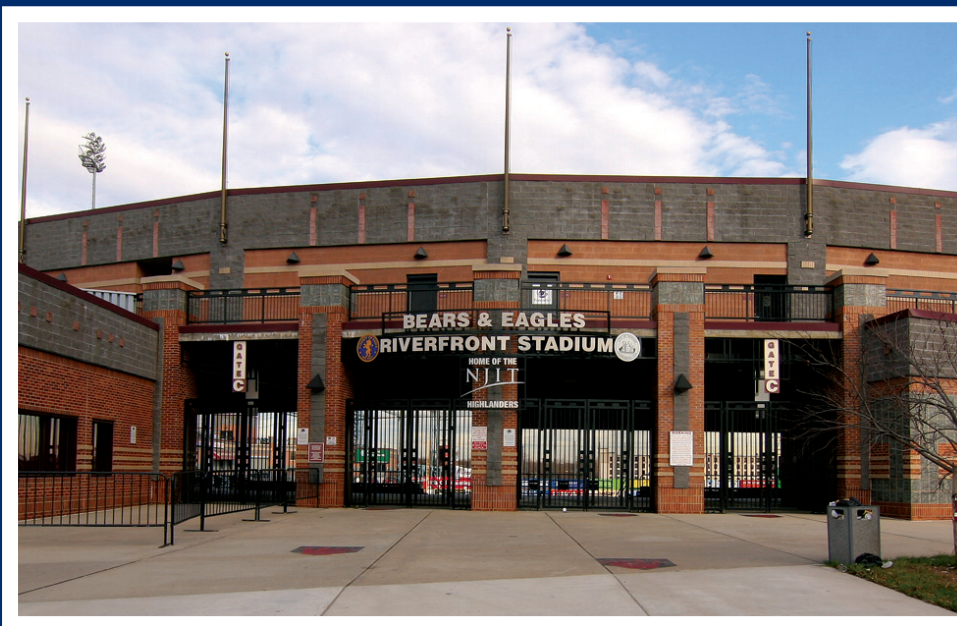
Red Bull Arena

Located in Harrison, NJ, just across the Passaic River from Newark and less than three miles from the NJIT campus, the new home of the New York Red Bulls (opened in March 2010) sets the standard for soccer venues across North America.

The state-of-the-art soccer-specific facility is a major component of a multi-billion dollar development.

Red Bull Arena has a number of key design elements which give its seating bowl a close-to-the-action feeling and the unique stadium roof design extends from its leading edge over the entire seating bowl and then curve down to the concourse.

The overall seating capacity for soccer is 25,000, including 30 luxury suites (20 lower level and 10 upper level) and 1,116 club seats. Other amenities include three stadium clubs and two retail outlets.



Bears and Eagles Riverfront Stadium

Bears and Eagles Riverfront Stadium, the \$30 million state-of-the-art home of the professional baseball Newark Bears and since 2004 the home of NJIT Highlanders baseball, officially opened to the public on July 16, 1999. With a seating capacity of 6,200, "The Den" affords fans an up-close view of the action. The ballpark also has 20 luxury suites, a picnic area, a party deck, a concert stage situated behind the outfield wall and a major league-caliber press box.

In December 2005, NJIT and the Bears held a joint press conference to herald a new partnership that includes a 10-year deal that extends Bears and Eagles Riverfront Stadium as the home of NJIT Highlanders baseball.



COACHING STAFF

HEAD COACH SERGIO GONZALEZ



Sergio Gonzalez was announced as the new head women's soccer coach at New Jersey Institute of Technology as of March 2011, after assisting multiple championship seasons, including teams at the University of Dayton that advanced to the second round of the NCAA Division I Tournament following both the 2009 and 2010 seasons.

In Gonzalez's first season at the helm of the Highlanders, the team finished with a 2-17 record. Looking ahead at the 2012 season, Gonzalez and his staff brought in 12 newcomers -- two players from New York (one from Long Island and one from upstate near Buffalo) and one each from New Jersey, Maryland, and Virginia and from the Midwest in Illinois and Missouri, plus four from Ontario for his latest recruiting class. The recruited group includes a goalkeeper, three defenders, two midfielders, a forward, two who will work on both defense and in the midfield, and two more who will be in either the midfield or at forward.

Gonzalez spent five seasons at Dayton, which finished 16-1-6 in 2009 and 19-3-1 in 2010 to cap off a total record of 71-21-15 in his time with the Flyers, who were Atlantic 10 Conference champions each of the last two years.

The Dayton class that completed its career in 2010 was ranked 15th in the nation for wins in the players' four-

year careers. The 2009 Flyers also ranked 25th in the final national poll.

Gonzalez assisted head coach Mike Tucker in all aspects of the program, including being the team's goalkeepers coach and recruiting coordinator.

Under Gonzalez's tutelage, two Flyer goalkeepers earned Atlantic 10 Defensive Player of the Year honors; Niki Reed in 2007 and Katherine Boone in 2009. Lisa Rodgers, who had played youth soccer for Gonzalez in Pennsylvania, earned First Team A-10 honors in 2010, while Reed and Boone also raked in First Team honors.

In 2009, Dayton ranked second nationally in goals against average, while posting a school-record 15 shutouts. In 2010, the Flyers were 10th in goals against average and fifth in shutout percentage.

In Sergio's last three seasons at Dayton, he was the top assistant for Coach Tucker, the four-time Atlantic 10 Coach of the Year and 2009 NSCAA Region Coach of the Year.

"Sergio is one of the rising young stars in the coaching profession," said Coach Tucker, who has 235 wins in 16 seasons at Dayton, of his departing assistant. "I hate to lose him, but the chance to have his own program at NJIT is great for him and great for the program there. I don't have a bit of doubt that he'll do well.

"He takes pride in his coaching and he's in it for the players. He has a passion for coaching and he is a tremendous teacher who is very good working with the players to make them better. He'll make the players (NJIT has) better and he's a tireless recruiter who will bring in players who will make the program even better."

Gonzalez worked with Coach Tucker to recruit and coach three Atlantic 10 Defensive Players of the Year, two A10 Offensive Players of the Year, an A-10 Rookie of the Year and an A-10 Midfielder of the Year. One Flyer was a first-team NSCAA All-American in 2009 and two were second-team All-Americans in 2010.

Before joining the Flyers, Gonzalez was an assistant coach under head coach Noreen Herlihy at Division II Slippery Rock (PA) for six seasons (2000-05). At The Rock, he helped the women's team to the Pennsylvania State Athletic Conference regular season championship in 2003 and 2004. He also coached three consecutive PSAC Player of the Year honorees, as well as the 2003 PSAC Rookie of the Year.

In 2003 and 2005, Slippery Rock captured the PSAC Tournament championship. The Rock advanced to the national Division II Tournament Round of 16 in 2001 and played in the Tournament first round in 2003.

At Slippery Rock, Gonzalez helped coach a first-team Division II All-American, the 2003 PSAC Player and Rookie of the Year, two All-Americans in 2003, and the 2005 PSAC Player of the Year.

His coaching experience also includes being a director for former United States Women's National Team, Olympic gold medal and World Cup-winning coach Tony DiCicco's Soccer Plus Goalkeeper Camp since 2001.

"Sergio is a great young professional," said DiCicco. "He's a soccer junkie who studies the game and he's learned the ropes with some really good programs and coaches. Being a Division I head coach is a great opportunity that he's earned."

While at Dayton, Sergio was the head goalkeeper coach for the Ohio South Olympic Development program and a member of the Region II Olympic Development Program Coaching Staff.

He is currently on the NSCAA Goalkeeper Academy staff and was Director of Goalkeeping for the Ohio Elite Soccer Academy.

Gonzalez is a former standout college goalkeeper in his own right as a four-year starter and team captain at Salve Regina University in Newport, RI, where he holds all the season and career records. He earned three all-conference

honors and was a second-team All-Region selection in 1999. He also earned Salve Regina's "Male Athlete of the Year" award in 1999-2000.

Prior to enrolling at Salve Regina, he earned first-team All-State Group 4, Section I recognition at Vernon Township (NJ) High School. His parents still live in Vernon and he is thrilled about returning to the Garden State. "I have a ton of family in the area and it will be great to be around them and have their support."

Gonzalez, who holds a NSCAA Premier Coaching Diploma, received his BA in criminal justice from Salve Regina in 2000. He received his master's degree in student personnel from Slippery Rock in 2003.

"I was very happy when Sergio accepted our offer to become the next head coach for women's soccer here at NJIT," said Lenny Kaplan. "This is an exciting time for our program, and I believe Sergio is the guy to help us take our next big step."

"He is a high-energy Jersey native who has been associated with two great programs. And there is no question better times are ahead for the NJIT women's soccer program, and Sergio is the coach to get us there."

Gonzalez is thankful to his mentors. "I've been lucky to work for a lot of great coaches—Tony (DiCicco), his assistant (with the professional Boston Breakers) Lisa Cole (formerly head coach at the University of Rhode Island), Noreen (Herlihy, head coach at Slippery Rock), and Mike Tucker.

"Noreen gave me my first chance to be a coach and it was a great experience helping to build a program from the ground floor to a championship. And then at Dayton, to help get it

back up to where it had been a few years earlier under Mike (Tucker). The biggest thing I learned from Mike is that he cares more about them as people than as soccer players. Players have to want to play for you and they're going to feel that way if they know you care for them."

Gonzalez sees a bright future for NJIT women's soccer, which is entering its 16th all-time season and its sixth season of Division I competition.

"I'm excited about this chance at NJIT seeing the resources we have," said the new coach. "Looking at what we had as a young program at Slippery Rock and then at Dayton, I think the resources are here for this to be a competitive regional program, where we can challenge the top teams."

Gonzalez is also pleased to retain Manda Ridsen as assistant coach. Ridsen, who joined the NJIT staff in 2008, oversaw the program following the resignation of former head coach Kevin Leacock. Prior to coaching at NJIT, Ridsen had been an assistant coach at Brown for four years and at Rutgers the four years before that. She played high-level Division I soccer at Clemson and Auburn.

"She's a great person and I'm really happy to have her stay on staff," said Gonzalez. "She did a fantastic job working with the players in the (coaching) transition, keeping this group together. The work she put in has made it so much easier for me coming in and since we've been working together, I've found that we share the same vision of what makes a good player and a good program, so I couldn't be happier."





COACHING STAFF

ASSISTANT COACH MANDA RISDEN



Manda Ridsen, a New Jersey native, returned to her home state and NJIT in 2008 after four years as an assistant coach at Brown.

She had joined the Bears following a four-year coaching stint at Rutgers University as an assistant/goalkeeper coach. While with the Scarlet Knights, Ridsen helped to lead Rutgers to two NCAA Tournament appearances, advancing to the 2001 Sweet Sixteen, and the 2003 Second Round.

While at Rutgers, Ridsen has also served as an Assistant Director/Goalkeeping Director at the Glenn Crooks Girls Soccer School since 2000.

In addition to collegiate coaching experience, Ridsen helped to lead the 85 Girls (NJ ODP) to a Region I Championship in 2000, and the 85 Girls (NJ DOP) to the ODP National Championships in 2001. She also served as the 87 and 88 Girls (NJ ODP) Goalkeeper Coach in 2001.

A 1999 graduate of Auburn University with a B.S. in Education, Ridsen was a standout performer for the Tigers from 1997-1998, after transferring from Clemson University, where she spent three seasons. She was captain for the 1998 Auburn soccer team and she received an Auburn Scholar Athlete Award. She served on the Student Athlete Advisory Committee at both Clemson and Auburn and appeared in the most minutes in a single-season at Auburn during the 1998 season.

ASSISTANT COACH ERWIN VAN BENNEKOM



Joining the NJIT women's soccer coaching staff for 2011, Erwin van Bennekom, a native of the Netherlands, has extensive experience as a coach in club soccer.

Since January 2010, he has headed the New Jersey Blaze women's team in the Women's Premier Soccer League. He also coached the Real New Jersey SC Power and NJ Elite '95, both top-ranked club teams in its age group in the country. Erwin currently coaches the STA Magic.

He is a graduate of CIOS Academy - Institute of Sports and the KNVB (translated in English as Royal Dutch Football Association) Academy in his home country, which is renowned worldwide for its player and coach

development program.

Erwin currently hold a UEFA "B" and "C" License, KNVB Trainer Coach II & III License, US Soccer USSF "C" License, NSCAA Youth Diploma and Rene Meulenstein Technical Training Diploma.

2012 ROSTER



<i>NO.</i>	<i>NAME</i>	<i>YR.</i>	<i>HT.</i>	<i>POS.</i>	<i>HOMETOWN/HIGH SCHOOL</i>
0	Larissa Beer	Fr.	5-9	GK	London, Ontario, Canada / St. Thomas Aquinas (London, Ontario)
1	Samantha Bersett	Fr.	5-9	GK	Wildwood, MO / Cor Jesu Academy (St. Louis, MO)
2	Megan Dellavalle	So.	5-3	F	Santa Rosa, CA / Montgomery
4	Meryl Hershfield	Sr.	5-4	MF	Vancouver, British Columbia / Jess Schwartz College Prep (Phoenix, AZ)
5	Gechi Ukaegbu	Sr.	5-3	F	Union, NJ / Union
6	Rebecca Tustin	Jr.	5-7	F	Haddon Heights, NJ / Haddon Heights
7	Danielle Pierce	Fr.	5-9	D	Ajax, Ontario, Canada / Archbishop Denis O'Connor Catholic
8	Kylie Jones	So.	5-7	MF	Cheshire, England / Ellesmere Port Catholic
10	Erin Williams-Weir	Fr.	5-7	MF	Burlington, Ontario, Canada / Nelson
11	Kaelyn Gamel	Fr.	5-4	F/MF	Hamburg, NY / Hamburg
12	Erin Schmitt	Jr.	5-4	D	Ramsey, NJ / Ramsey
13	Camille Billing	Jr.	5-6	F	Tecumseh, Ontario / St. Anne Catholic
14	Madeline Griep	Fr.	5-4	MF/F	Burlington, Ontario, Canada / Nelson
15	Erin Morris	Sr.	5-10	MF	Potomac, MD / Thomas S. Wootton (Rockville, MD)
16	Jenny Cislo	So.	5-7	D	Crownsville, MD / Old Mill Senior
17	Amanda Redden	Jr.	5-4	CM	Hamilton Square, NJ / Steinert
18	Antonietta Jackson	Fr.	5-1	MF	Freehold, NJ / Freehold Township
19	Abi Fakolujo	Fr.	5-5	F	Magnolia, NJ / Triton Regional
20	Marissa Borschke	Fr.	5-9	CM/D	Burlington, Ontario, Canada / Corpus Christi Secondary School
21	Alex Adam	Fr.	5-6	MF	Centereach, NY / Centereach
22	Grace Seely	So.	5-5	B	London, England / Bexley Grammar School
24	Catherine Andrus	Jr.	5-7	D	Monroe Township, NJ / Bishop George Ahr
25	Jaclyn Ward	Fr.	5-4	D	Pasadena, MD / Chesapeake
27	Emmy Hattle	Fr.	5-7	D	Western Springs, IL / Lyons Township



2011 STATISTICS & RESULTS

RECORD:	OVERALL	HOME	AWAY	NEUTRAL
ALL GAMES	2-17-0	2-7-0	0-9-0	0-1-0
CONFERENCE	1-5-0	1-2-0	0-2-0	0-1-0
NON-CONFERENCE	1-12-0	1-5-0	0-7-0	0-0-0

Date	Opponent	Score	Att.	##	Player	gp	g	a	pts	sh	sh%	sog	sog%	gw	pk-att
Aug 26	at Iona College	L 1-3	104	5	Gechi Ukaegbu	19	2	0	4	24	.083	11	.458	0	0-0
Aug 30	at Wagner	L 1-2	167	8	Kylie Jones	19	2	0	4	23	.087	8	.348	0	0-0
Sep 02	RIDER	L 0-2	413	2	Megan Dellavalle	19	1	1	3	12	.083	5	.417	1	0-0
Sept 5	at Monmouth	L 0-6	315	13	Camille Billing	17	1	0	2	5	.200	3	.600	1	0-0
Sept. 9	at Fairleigh Dickinson	L 0-1	183	23	Jennifer Kalczewski	19	1	0	2	3	.333	2	.667	0	0-0
Sep 11	LAFAYETTE	L 0-1	225	9	Mariam Bestawros	19	0	2	2	27	.000	8	.296	0	0-0
Sep 14	LONG ISLAND	L 0-2	209	4	Meryl Hershfield	19	0	2	2	19	.000	8	.421	0	0-0
Sep 18	LEHIGH	L 0-2	189	10	Cielianna Pasiciel	19	0	1	1	4	.000	1	.250	0	0-0
Sep 22	SAINT PETER'S	W 2-1	204	17	Amanda Redden	18	0	0	0	23	.000	9	.391	0	0-0
Sep 25	SAINT JOSEPH'S	L 0-2	213	15	Erin Morris	17	0	0	0	4	.000	1	.250	0	0-0
* Oct 07	DELAWARE STATE	W 2-0	413	18	Nicole Vazquez	12	0	0	0	1	.000	0	.000	0	0-0
Oct 09	at Longwood	L 0-2	139	12	Erin Schmitt	19	0	0	0	1	.000	1	1.000	0	0-0
10/12/1	at Penn	L 0-8	50	25	Gabrielle Clark	1	0	0	0	0	.000	0	.000	0	0-0
* Oct 15	vs South Carolina State	L 0-1	52	24	Catherine Andrus	13	0	0	0	0	.000	0	.000	0	0-0
* Oct 20	HOWARD	L 0-2	600	22	Grace Seely	11	0	0	0	0	.000	0	.000	0	0-0
* Oct 22	UTAH VALLEY	L 1-4	209	16	Jenny Ciso	19	0	0	0	0	.000	0	.000	0	0-0
* Oct 27	at North Dakota	L 0-2	157	3	Elina Aberg	15	0	0	0	0	.000	0	.000	0	0-0
* Oct 29	at Houston Baptist	L 0-1	158		Total	19	7	6	20	146	.048	57	.390	2	0-0
Nov 04	at Houston Baptist	L 0-1	300		Opponents	19	43	34	120	284	.151	147	.518	17	5-5

Goals by Period	1st	2nd	Total
NJIT	4	3	7
Opponents	23	20	43

Shots by Period	1st	2nd	Total
NJIT	58	88	146
Opponents	136	148	284

Saves by Period	1st	2nd	Total
NJIT	47	57	104
Opponents	26	24	50

Corners by Period	1st	2nd	Total
NJIT	22	33	55
Opponents	56	31	87

Fouls by Period	1st	2nd	Total
NJIT	77	90	167
Opponents	89	102	191

TEAM STATISTICS	NJIT	OPP
SHOT STATISTICS		
Goals-Shot attempts	7-146	43-284
Goals scored per game	0.37	2.26
Shot pct.	.048	.151
Shots on goal-Attempts	57-146	147-284
SOG pct.	.390	.518
Shots/Game	7.7	14.9
CORNER KICKS	55	87
PENALTY KICKS	0-0	5-5
PENALTIES		
Yellow cards	8	13
Red cards	0	0
ATTENDANCE		
Total	2675	1573
Dates/Avg Per Date	9/297	9/175
Neutral Site #/Avg	1/52	

##	Goalie	GP	Min.	GA	GAAvg	Saves	Pct	W-L-T	Sho
1	Caity Ragni	1	45:00	0	0.00	2	1.000	1-0-0	0
00	Amanda Murray	5	315:00	4	1.14	23	.852	0-2-0	0
0	Anna Kommuller	16	1350:00	39	2.60	78	.667	1-13-0	0
	Total	19	1710:00	43	2.26	104	.707	2-15-0	1
	Opponents	19	1710:00	7	0.37	50	.877	15-2-0	14

RECORDS BOOK



SCHOOL RECORDS

Most Games—Career

74	Sadie Mele	2007-10
73	Kori Washington	2007-10
72	Cielianna Pasiciel	2008-11
	Christi Taylor	2007-10
	Erika Taugher	2004-08
65	Erin Salgado	2002-05
62	Amanda Bayiokos	2004-07
	Briana Morales	2005-09
60	Katie DeRosa	2005-08
59	Jennifer Herrera	2000, 2002-04
57	Sara Buchala	2001-04

Most Games—Season

19	9 tied	2011
6 tied	2008	
6 tied	2007	

Most Goals—Career

16	Erika Taugher	2004-08
	Cathy Wasko	2001
	Erin Salgado	2002-05
12	Kori Washington	2007-10
	Karina Merchan	2001-02
9	Jillian Misiunas	2002-04
8	Daisy Calderon	2000-01, 03
	Valerie DeAngelis	2000
7	Gechi Ukaegbu	2009-pres.
	Anna Tomczak	1999-2001
	Mary Caron	1998-99

Most Goals—Season

13	Cathy Wasko	2001
12	Karina Merchan	2001
8	Vallerie DeAngelis	2000
6	Erika Taugher	2004
	Erika Taugher	2005
5	Erin Salgado	2002
	Daisy Calderon	2001
	Anna Tomczak	2001
	Kori Washington	2007

Most Goals—Game

5	Cathy Wasko vs. Mt. St. Vincent,	2000
9/7/01		
4	Karina Merchan vs. St. Elizabeth,	2001
10/15/01		

Most Assists—Career

15	Erika Taugher	2004-08
10	Jayna Misiunas	2002-04
	Karina Merchan	2001-02
9	Cathy Wasko	2001
8	Anna Tomczak	1999-2001
7	Meryl Hershfield	2009-pres.
	Jillian Misiunas	2002-04
	Sarah Buchala	2001-04
	Erin Salgado	2002-05
5	Kori Washington	2007-10
4	Linda Flores	2000-01
	Emma Vinski	2005-08

Most Assists—Season

9	Cathy Wasko	2001
7	Karina Merchan	2001
6	Jayna Misiunas	2003
5	Erika Taugher	2004
	Sarah Buchala	2001

Most Assists—Game

4	Cathy Wasko vs. Mt. St. Vincent,	2001
9/7/01		
3	Erika Taugher vs. Wagner,	2001
9/10/08		

Most Points—Career

47	Erika Taugher	2004-08
35	Cathy Wasko	2001
34	Karina Merchan	2001-02
33	Erin Salgado	2002-05
29	Kori Washington	2007-10
27	Jillian Misiunas	2002-04
22	Anna Tomczak	1999-2001

19	Vallerie DeAngelis	2000
17	Sarah Buchala	2001-04
16	Jayna Misiunas	2002-04
	Emma Vinski	2005-08

Most Points—Season

35	Cathy Wasko	2001
31	Karina Merchan	2001
19	Vallerie DeAngelis	2000
17	Erika Taugher	2004
15	Erika Taugher	2005
13	Dasiy Calderon	2001
	Anna Tomczak	2001
12	Kori Washington	2007
11	Erin Salgado	2002
	Jessi Wilkinson	2001

Most Points—Game

10	Cathy Wasko vs. Mt. St. Vincent,	2001
9/7/01		
8	Karina Merchan vs. St. Elizabeth,	2001
10/15/01		

Most Shots—Season

64	Cathy Wasko	2001
----	-------------	------

Most Shots—Game

15	Erin Salgado vs. Mt. St. Vincent,	2001
10/17/02		

Most Games as Goalkeeper—Career

74	Sadie Mele	2007-10
38	Daisy Calderon	2000-01, 03

Most Solo Shutouts—Season

7	Bruna Lotufo	2005
3	Sadie Mele	2009
	Sadie Mele	2007

Most Saves—Career

437	Sadie Mele	2007-10
296	Daisy Calderon	2000-01, 03

Most Saves—Season

167	Daisy Calderon	2000
155	Kate Crowley	1999
152	Kate Duncan	2002
140	Sadie Mele	2008

Most Saves—Game

	Ketsia Mesidor vs. Bridgeport,	2001
	9/17/97	

Most Goalkeeper Wins—Career

17	Sadie Mele	2007-10
10	Daisy Calderon	2000-01, 03
9	Bruna Lotufo	2005-06
6	Joy Intasamakul	2001

Most Goalkeeper Wins—Season

8	Bruna Lotufo	2005
7	Sadie Mele	2009



Camille Billing



RECORDS BOOK

SCHOOL RECORDS

MISCELLANEOUS INDIVIDUAL RECORDS

Most Hat Tricks, Career

2, Cathy Wasko, 2001

Most Hat Tricks, Season

2, Cathy Wasko, 2001

Most Game Winning Goals, Career

3, Cathy Wasko, 2001 & Erika Taugher, 2004

Most Game Winning Goals, Season

3, Cathy Wasko, 2001 & Erika Taugher, 2004

Fastest Two Goals

1:23, Dinah Kotei at New Jersey City, 9/7/02

Fastest Three Goals

12:20, Cathy Wasko vs. CCNY, 10/1/01

Longest Goal-Scoring Streak

3, Cathy Wasko, 2001 and Jessi Wilkin-son, 2001

Longest Point-Scoring Streak

3, five times

TEAM RECORDS

Most Victories: 8, 2005
Fewest Losses: 6, 2005
Most Ties: 3, 2005
Best Winning Percentage: .559, 2005
Most Consecutive Victories: 3, Oct. 18 to Oct. 25, 2009; Sept. 28 to Oct. 5, 2005
Most Shutouts: 7, 2005
Most Consecutive Shutouts: 3, 2005
Most Goals, Game: 9 vs. CCNY, 10/1/01
Most Shots, Game: 50 vs. Mount St. Vincent, 10/6/04
Most Goals, Season: 43, 2001
Fewest Goals Allowed, Season: 25, 2009
Fastest Two Goals: 0:47 at Delaware State 10/17/03 (Erin Salgado, Maura Finn)
Fastest Three Goals: 5:23 vs. CCNY 10/1/01 (Cathy Wasko 2, Karina Merchan)
Fastest Goal From Start of Game: 3:15 vs. Mercy, 9/8/03 (Maura Finn)


Catherine Andrus

ALL-TIME COACHING RECORDS

YEAR	RECORD	CONFERENCE	MVP	CAPTAINS
1996	0-12	WIAC/IAC	Natalie Rodriguez	N/A
1997	0-13	NYCAC (0-8/9th)	Janina Alvarez	N/A
1998	1-10	NYCAC (0-8/9th)	Natalie Rodriguez	N/A
1999	1-10	NYCAC (0-9/10th)	Veta Obazenu	N/A
2000	3-13	CACC (1-9/T-10th)	Daisy Calderon	Ana Tomczak
2001	6-9	CACC (1-8/T-9th)	Cathy Wasko	Ana Tomczak
2002	4-13	CACC (1-9, 10th)	Erin Salgado	Sarah Buchala, Erin Salgado
2003	2-12-1	CACC (1-9, T-10th)	Lisa Kling	Sarah Buchala, Katie Duncan
2004	5-10-1	CACC (2-7)	Katie Hepfinger	Sarah Buchala, Katie Duncan
2005	8-6-3	CACC (7-2-2)	Amanda Bayiokos	Erin Salgado
<i>Postseason: ECAC Quarterfinal</i>				
2006	1-13-1	Independent	Cynthia Bayiokos	Dena Baskous, Cynthia Bayiokos
2007	4-14-1		USC (2-2-1)	Dena Baskous Dena Baskous
2008	2-16-1	USC (1-3-1)	Sadie Mele	
			Emma Vinski, Erika Taugher, Melissa Paul, Briana Morales	
2009	7-9-2	GWC (4-1-1/1st East)	Sadie Mele	Game Captains
2010	4-13-1	GWC (3-3-0/2nd East)	Sadie Mele	Game Captains
2011	2-17-0	GWC (1-5-0/7th)	N/A	Game Captains

RECORDS BOOK



DIVISION I RECORDS

Most Games—Career

74	Sadie Mele	2007-2010
73	Kori Washington	2007-2010
72	Cielianna Pasiciel	2008-11
	Christi Taylor	2007-2010
66	Mary Munoz	2007-2010
55	Meryl Hershfield	2009-pres.
53	Piper Lunan	2008-2010
51	Gechi Ukaegbu	2009-pres.
45	Briana Morales	2006-2009
43	Michelle Borth	2007-2010
39	Erika Taugher	2006-2008
38	Emma Vinski	2006-2008

(Note: Erika Taugher and Emma Vinski began their careers in NJIT's Division II era. Totals and years listed in this section are for their Division I competition only)

Most Games—Season

19	9 tied	2011
	7 tied	2008

Most Goals—Career

12	Kori Washington	2007-2010
7	Gechi Ukaegbu	2009-pres.
5	Emma Vinski	2006-2008
4	Amanda Dotten	2009-2010

(Note: Emma Vinski began her career in NJIT's Division II era. Totals and years listed in this section are for her Division I competition only)

Most Goals—Season

5	Kori Washington	2007
4	Amanda Dotten	2010
	Kori Washington	2009

Most Assists—Career

7	Meryl Hershfield	2009-pres.
	Erika Taugher	2006-2008
5	Kori Washington	2007-2010
4	Emma Vinski	2007-2008

Most Assists—Season

4	Erika Taugher	2008
3	Piper Lunan	2010
	Meryl Hershfield	2010
3	Amanda Dotten	2009
3	Emma Vinski	2008
3	Erika Taugher	2007

Most Points—Career

29	Kori Washington	2007-2010
16	Gechi Ukaegbu	2009-pres.
15	Amanda Dotten	2009, 2010
15	Erika Taugher	2006-2008
14	Emma Vinski	2007-2008

(Note: Erika Taugher and Emma Vinski began their careers in NJIT's Division II era. Totals and years listed in this section are for their Division I competition only)

Most Points—Season

12	Kori Washington	2007
10	Kori Washington	2009
	Erika Taugher	2008
8	Gechi Ukaegbu	2009
	Piper Lunan	
7	Amanda Dotten	2009
	Emma Vinski	2008
	Emma Vinski	2007

Most Saves—Career

437	Sadie Mele	2007-2010
83	Bruna Lotufo	2006
69	Angelica Sepulveda	2006

Most Saves—Season

140	Sadie Mele	2008
123	Sadie Mele	2007
90	Sadie Mele	2010
84	Sadie Mele	2009
70	Bruna Lotufo	2006
69	Angelica Sepulveda	2006

TEAM RECORDS

Most Victories: 7, 2009

Fewest Losses: 9, 2009

Most Ties: 2, 2009

Best Winning Percentage:

.444 (7-9-2) 2009

Most Consecutive Victories:

3, Oct. 18 to Oct. 25

Most Shutouts: 3, 2007, 2009

Most Consecutive Shutouts:

2, 2007

Most Goals, Game:

5 vs. Delaware State (Oct.23); vs. Howard (Oct. 24, 2007)

Most Goals, Season: 23, 2009

Most Shots, Game:

27 vs. South Carolina State (Nov. 7, 2007)

Most Shots, Season: 226, 2009

Most Saves, Game:

15 at IPFW (Aug. 31, 2006)

Most Saves, Season: 143, 2006

(Division I competition began in 2006)

DIVISION I SUPERLATIVES

NJIT

14 vs. Iona (8.25.06)
15 vs. Howard, (10.24.07)
5 vs. Howard, (10.24.07)
5 vs. Delaware State (10.23.09)
5 vs. Howard, (10.24.07)
5 vs. Wagner (9.10.08)
31 vs. South Carolina State (11.2.07)
20 vs. South Carolina State (11.2.07)
15 at IPFW (8.31.06)
8 vs. Bryant (9.3.10); 8 vs. Howard (10.29.10)
8 vs. South Carolina State (11.2.07)
23 vs. South Carolina State (11.2.07)

TEAM

Points	13, Long Island Univ. (9.1.10)
	13, Central Conn. State (9.13.06)
Points	25, Iona, (10.3.06)
Goals	7, North Dakota State (10.30.06)
	7, Iona (10.13.06)
	7, Monmouth (10.12.08)
Assists	11, Iona, (10.13.06)
Shots	46, IPFW, (8.31.06)
Shots on Goal	21, IPFW, (8.31.06)
Saves	19, South Carolina State (11.2.07)
Corner Kicks	18, Drexel, (9.19.06)
	8 vs. Delaware State (10.18.09)
Fouls	17, South Carolina State (11.2.07)

Opponents

INDIVIDUALS

Points

5, Kori Washington vs. Howard (10.24.07)

Goals

2, Kori Washington vs. South Carolina State (11.7.07)
2, Gechi Ukaegbu at Delaware State (10.23.09)

Assists

3, Erika Taugher vs. Wagner (9.10.08)

Shots

8, Amanda Dotten vs Howard (10.25.09)

Shots on Goal

4, four tied

Saves

14, Sadie Mele vs. Army (8.26.08)

Records are from 2005 on (active championship-eligible Division I status)



RECORDS BOOK

ALL-TIME VS. OPPONENTS

Adelphi	0-3	Delaware State	8-1	Lehigh	0-2	Nyack	0-7	Saint Joseph's	0-2
Albany (NY)	0-2	Dominican (NY)	0-5	Long Island	0-2	Penn	0-1	St. Joseph's-Patchogue	0-1
Allentown	0-2	Drexel	1-3	Longwood	0-4-1	Philadelphia	0-3	St. Rose	0-5
Army	0-3	Fairleigh Dickinson	0-1	Marist	0-0	Philadelphia Biblical	2-0	St. Thomas Aquinas	0-2
Binghamton	0-2	FDU-Madison	0-1	Marshall	0-1	Philadelphia Textile	0-2	Southampton	0-3
Bloomfield	6-4	Felician	1-5	Manhattan	0-1	Post (CT)	1-4	Stevens	0-1
Bridgeport	0-1	Georgian Court	0-4-1	Mercy	1-3	Purchase	2-1	Temple	0-0
Bryant	1-2	Goldey-Beacom	0-5	Molloy	0-4	Queens (NY)	0-4	UNC-Charlotte	0-1
Caldwell	0-5-1	Green Mountain	0-1	Monmouth	0-5	Quinnipiac	0-3	Utah Valley	0-6
Canisius	0-1	Holy Family	0-6	Mount St. Mary's	0-1-2	Rhode Island	0-0	Wagner	1-4
Centenary (NJ)	0-1	Houston Baptist	0-3	Mount St. Vincent	5-2	Rider	1-2	Wilmington (DE)	1-4
CCNY	1-0	Howard	4-3-1	Navy	0-1	Siena	0-1		
Columbia	0-0	Iona	0-5	North Dakota	0-2	South Carolina State	3-4-1	2012 opponents in bold	
Concordia (NY)	0-5	IPFW	0-1	North Dakota State	0-2	Saint Peter's	3-3		
C.W. Post	0-3	Lafayette	0-4	NYIT	0-4	St. Anselm	0-1		
Dartmouth	0-0	LaSalle	0-2	New Jersey City	2-0-1	St. Elizabeth	3-1		

ALL-TIME ALL CONFERENCE HONORS

Women's Intercollegiate Athletic Conference

1996 Wendy Gruenewald, Natalie Rodriguez, Maiysha Ware

Independent Athletic Conference

1996 Natalie Rodriguez

Great West Conference All-Academic Team

2011 Anna Kornmuller
2011 Meryl Hershfield
2011 Erin Morris
2010 Amanda Dotten
2010 Erin Morris
2010 Christi Taylor
2010 Meryl Hershfield
2009 Christi Taylor
2008 Erika Taugher
2008 Christi Taylor

Great West Conference (East Division)

2010 Sadie Mele
2010 Piper Lunan
2009 Sadie Mele
2009 Cielianna Pasiciel
2009 Piper Lunan

Great West Conference Defensive Player of the Year (East)

2010 Sadie Mele
2009 Sadie Mele

Great West Conference Offensive Player of the Year (East)

2010 Piper Lunan

Great West Conference Sportsmanship Award

2010 Sadie Mele

Central Athletic Collegiate Conference

2005 Dena Baskous (1st)
2005 Bruna Lotufo (2nd)
2005 Erika Taugher (3rd)
2002 Erin Salgado (HM)
2000 Vallerie DeAngelis (HM)

United Soccer Conference

2007 Dena Baskous (1st)
2007 Erika Taugher (2nd)
2007 Sadie Mele (3rd)
2007 Emma Vinski (3rd)
2007 Kori Washington (3rd)
2007 Michelle Borth (3rd)
2007 Xiomara Medina (3rd)

NSCAA Division II All-New England

2005 Dena Baskous (2nd)

NCAA Statistical Champion

2000 Daisy Calderon, saves per game

RECORDS BOOK



YEAR - BY - YEAR

1996 (0-11)

	MT. ST. VINCENT	L	2-3
	St. Joseph's (LI)+	L	
	at Allentown	L	0-1
	at Molloy	L	0-9
10/2	STEVENS TECH+	L	0-3
	at Allentown (ot)	L	0-1
	at St. Elizabeth	L	0-4
	at FDU-Madison	L	0-3
	at Centenary (NJ)	L	0-9
	at Nyack	L	0-4
	at Bloomfield	L	0-3

*WIAC +IAC
Coach: Dan Kilday

1997 (0-13)

9/2	at Nyack	L	0-11
9/6	at Adelphi	L	0-14
9/14	at Albany	L	0-8
9/17	BRIDGEPORT	L	0-8
9/24	at Bloomfield	L	
9/30	PHILA. TEXTILE*	L	1-10
10/4	ST. ROSE*	L	0-5
10/11	SOUTHAMPTON*	L	
10/15	at St. Thomas Aquinas	L	



Gechi Ukaegbu

10/18	at Molloy*	L	0-12
10/24	CW POST*	L	0-5
10/26	at New York Tech*	L	0-16
11/1	at Concordia (NY)*	L	0-7

*NYAC (0-8)
Coach: Ralph Choonoo

1998 (0-10)

9/12	BLOOMFIELD	L	0-5
9/16	at CW POST*	L	0-13
9/20	ST. THOMAS AQUINAS	L	0-5
9/26	at St. Rose*	L	0-13
10/9	at Molloy*	L	0-8
10/14	NEW YORK TECH*	L	0-8
10/17	CONCORDIA (NY)*	L	0-4
10/21	ADELPHI*	L	fft.
10/24	at Southampton*	L	0-8
10/31	PHILA. TEXTILE*	L	0-14

*NYCAC (0-8)

1999 (1-10)

9/11	CALDWELL	L	1-8
9/13	at Molloy*	L	0-10
9/23	at Bloomfield	W	2-1
9/26	ST. ROSE*	L	0-12
9/29	at Queens (NY)*	L	0-6
10/9	at Concordia (NY)*	L	0-8
10/14	SOUTHAMPTON*	L	0-6
10/17	at Adelphi*	L	1-7
10/23	CW POST*	L	0-21
10/25	PHILADELPHIA*	L	1-13
10/30	at New York Tech*	L	0-9

*NYCAC (0-9)
Coach: Tom Romano

2000 (3-13)

9/11	QUEENS (NY)	L	0-5
9/13	TEIKYO POST*	L	0-6
9/16	at Concordia (NY)	L	1-3
9/18	at Bloomfield* (ot)	L	1-2
9/21	CONCORDIA (NY)	L	0-2
9/25	at Mercy	L	1-2
9/27	GEORGIAN COURT*	L	0-7
9/30	at Holy Family*	L	0-8
10/2	MT. ST. VINCENT	W	3-1
10/4	at Dominican (NY)*	L	0-7



Kylie Jones

10/7	WILMINGTON (DE)* (ot)	W	2-1
10/11	at Caldwell*	L	0-5
10/14	FELICIAN*	L	0-3
10/16	at Mt. St. Vincent	W	6-0
10/18	NYACK*	L	0-4
10/22	at Goldey-Beacom*	L	0-8

*CACC (1-9)
Coach: Tom Romano

2001 (6-9)

9/7	at Mt. St. Vincent	W	7-1
9/10	MERCY	L	0-5
9/17	PHILADELPHIA BIBLEW	5-2	
9/19	at Bloomfield*	W	2-0
9/22	at Teikyo Post*	L	0-8
9/26	at Nyack*	L	2-5
9/29	HOLY FAMILY*	L	0-7
10/1	CCNY	W	9-0
10/3	GOLDEY-BEACOM*	L	1-3
10/5	GEORGIAN COURT*	L	1-2
10/10	at Dominican (NY)*	L	0-8
10/15	ST. ELIZABETH	W	8-0
10/20	at Wilmington (DE)*	L	2-7
10/22	MT. ST. VINCENT	W	6-0
10/25	FELICIAN*	L	0-7

*CACC (1-8)

Coach: Tom Romano

2002 (4-13)

8/31	at Saint Rose	L	0-8
9/1	vs. Green Mountain	L	0-6
9/7	at New Jersey City	W	3-0
9/11	at Queens (NY)	L	0-2
9/14	at Felician*	L	0-5
9/18	BLOOMFIELD* (ot)	W	3-2
9/21	TEIKYO POST*	L	1-5
10/5	at Georgian Court*	L	1-3
10/7	at Mt. St. Vincent	L	2-4
10/9	DOMINICAN (NY)*	L	0-7
10/14	at Goldey-Beacom*	L	0-8
10/19	WILMINGTON (DE)*	L	0-6
10/21	ST. ELIZABETH	W	3-0
10/23	PURCHASE	W	2-0
10/27	at Holy Family*	L	1-5
10/30	NYACK*	L	2-3
11/1	at Caldwell*	L	0-3

*CACC (1-9)

Coach: Tom Romano

2003 (5-12-1)

9/6	NEW JERSEY CITY (2ot)	T	1-1
9/8	at Mercy	L	1-3
9/10	QUEENS (NY)	L	0-6
9/17	at Bloomfield*	W	3-0
9/20	at Teikyo Post*	L	0-4
9/24	at Nyack*	L	0-5
9/27	HOLT FAMILY*	L	0-6
9/29	at Purchase	L	0-4
10/1	GOLDEY-BEACOM*	L	0-5
10/4	GEORGIAN COURT*	L	0-3
10/6	MT. ST. VINCENT	W	6-0
10/11	CALDWELL*	L	0-6
10/13	FELICIAN*	L	1-5
10/17	at Delaware State	W	5-1
10/18	at Wilmington (DE)*	L	0-8
10/20	at St. Elizabeth (2ot)	W	2-1
10/24	at Dominican (NY)*	L	0-5
10/25	PHILA. BIBLICAL	W	2-0

*CACC (1-9)

Coach: Tom Romano



RECORDS BOOK

YEAR - BY - YEAR

2004 (5-10-1)

8/29	ST. ANSELM COLLEGE	0-8
9/4	NYIT	L 0-3
9/8	at Felician*	L 2-3
9/11	at Georgian Court* (2ot)	T 0-0
9/15	BLOOMFIELD*	W 1-0
9/25	at Holy Family *	L 0-5
9/27	TEIKYO POST*	W 1-0
9/29	at Goldey-Beacom*	L 0-3
10/6	DOMINICAN (NY) *	L 0-2
10/9	at Caldwell*	L 0-2
10/13	at NJCU	W 5-1
10/16	MERCY	W 1-0
10/17	ST. ROSE	L 0-1
10/20	WILMINGTON (DE) *	L 0-4
10/23	NYACK* (NJIT DAY)	L 1-2
10/31	PURCHASE	W 4-1

*CACC (2-7-1)

Coach: Tom Romano

2005 (8-6-3)

8/26	at Drexel	L 0-6
9/4	ST. ANSELM	L 0-5
9/7	FELICIAN*	W 3-0
9/10	at NYIT (ot)	L 1-2
9/14	BLOOMFIELD*	W 2-0
9/17	at Post * (2ot)	T 0-0
9/21	at Nyack*	W 1-0
9/24	HOLY FAMILY*	L 0-2
10/1	GEORGIAN COURT*	W 3-0
10/5	at Dominican (NY) *	W 1-0
10/8	CALDWELL* (2ot)	T 1-1
10/15	DELAWARE STATE	W 3-1
10/19	at Wilmington (DE) *	W 1-0
10/23	at Saint Rose	L 0-5
10/27	PHILADELPHIA*	L 0-2
11/9	vs. Philadelphia # (2ot)	T 1-1

*CACC (7-2-2) #ECAC Division II Tourn.

Coach: Alyssa Radu

2006 (1-13-1)

8/25	MARSHALL	L 1-10
8/31	at IPFW	L 0-6
9/1	vs. Utah Valley State	L 0-6
9/8	MANHATTAN	L 0-3
9/13	at Iona	L 0-7
9/15	vs. Siena	L 0-6
9/17	at Albany	L 1-6

9/19	at Drexel	L 0-2
9/24	at UNC-Charlotte	L 0-5
10/1	at Howard	W 3-1
10/4	at Quinnipiac	L 0-4
10/14	NYIT	L 1-2
10/19	MONMOUTH	L 0-3
10/21	at St. Peter's (2ot)	T 0-0 (
10/30	NORTH DAKOTA STATE	L 0-7

Coach: Alyssa Radu

2007 (4-14-1)

9/2	at LIU	L 0-1
9/7	ALBANY (ot)	L 1-2
9/9	QUINNIPIAC	L 0-1
9/15	IONA	L 0-1
9/19	DREXEL	L 0-1
9/22	at Longwood*	L 0-1
9/25	at Binghamton	L 1-3
9/28	at Monmouth	L 0-5
9/30	at Wagner	L 1-2
10/5	at LaSalle	L 0-4
10/7	at Navy	L 0-3
10/14	at North Dakota State	L 1-3
10/19	at Utah Valley*	L 0-5
10/24	HOWARD*	W 5-1
10/26	at Delaware State*	W 2-0
11/2	SOUTH CAROLINA STATE*	T 1-1
11/4	SAINT PETER'S	W 2-0
11/7	vs. South Carolina State^	W 4-0
11/9	at Utah Valley^	L 0-3

* USC (2-2-1) ^ USC Tournament

Coach: Alyssa Radu

2008 (2-16-1)

8/26	at Army	L 1-3
8/29	at Saint Peter's	L 0-1
8/31	BINGHAMTON	L 0-2
9/5	CANISIUS	L 0-3
9/7	at Drexel	L 0-3
9/10	WAGNER	W 4-2
9/12	MONMOUTH	L 0-7
9/17	at Mount St. Mary's	L 2-5
9/18	at La Salle	L 0-3
9/21	at Quinnipiac	L 0-6
9/26	at Lafayette	L 0-2
9/28	at Iona	L 1-2
10/5	at South Carolina State*W	2-0

10/8	UTAH VALLEY*	L 1-2
10/11	LONGWOOD* (2ot)	T 0-0
10/17	DELAWARE STATE*	L 0-1
10/19	BRYANT	L 1-3
10/26	at Howard*	L 0-1
11/1	at Utah Valley^	L 0-4

* USC (1-3-1) ^ USC Tournament

Coach: Kevin Leacock

2009 (7-9-2)

8/28	at Army	L 0-3
8/30	at Canisius	L 0-1
9/4	DREXEL (2ot)	W 2-1
9/11	SAINT PETER'S	L 0-1
9/13	RIDER	W 2-0
9/18	MOUNT ST. MARY'S (2ot)	T 1-1
9/20	at Bryant	W 3-2
9/25	LAFAYETTE	L 0-1
9/28	IONA (ot)	L 1-2
10/2	SOUTH CAROLINA STATE *	W 2-1
10/4	at Howard * (2ot)	T 1-1
10/9	at South Carolina State *	L 0-1
10/18	DELAWARE STATE *	W 2-0
10/23	at Delaware State *	W 5-2
10/25	HOWARD *	W 2-0
10/30	at Wagner	L 0-3
11/1	at Longwood	L 1-2



Megan Dellavalle

11/6	NORTH DAKOTA ^	L 1-3
------	----------------	-------

* GWC (5-2-1) ^ GWC Quarterfinals

Coach: Kevin Leacock

2010 (4-13-1)

8/27	MONMOUTH	L 0-2
8/29	at Saint Peter's	W 2-1
9/3	BRYANT (ot)	L 1-2
9/5	at Saint Josephs	L 0-3
9/10	WAGNER	L 0-1
9/12	at Mount St. Mary's (2ot)	T 1-1
9/17	at Lafayette	L 0-2
9/21	at Rider	L 2-5
9/24	ARMY	L 0-2
9/26	at Howard* (ot)	L 1-2
10/3	at Lehigh	L 0-6
10/8	at Delaware State*	W 4-3
10/15	SOUTH CAROLINA STATE*	L 0-2
10/17	LONGWOOD	L 1-3
10/22	DELAWARE STATE*	W 1-0
10/29	HOWARD*	W 2-1
10/31	at South Carolina State*	L 1-3
11/5	vs. Houston Baptist^	L 0-1

* GWC (3-3) ^ GWC Tournament

Coach: Kevin Leacock

2011 (2-17-0)

8/26	at Iona	L 1-3
8/30	at Wagner	L 1-2
9/2	RIDER	L 0-2
9/5	at Monmouth	L 0-6
9/9	at Fairleigh Dickinson	L 0-1
9/11	LAFAYTTE	L 0-1
9/14	LONG ISLAND	L 0-2
9/18	LEHIGH	L 0-2
9/22	SAINT PETER'S	W 2-1
9/25	SAINT JOSEPH'S	L 0-2
10/7	DELAWARE STATE*	W 2-0
10/9	at Longwood	L 0-2
10/12	at Penn	L 0-8
10/15	at South Carolina State*	L 0-1
10/20	HOWARD*	L 0-2
10/22	UTAH VALLEY*	L 1-4
10/27	at North Dakota*	L 0-2
10/29	at Houston Baptist*	L 0-1
11/4	at Houston Baptist^	L 0-1

*GWC (1-5) ^ GWC Tournament

Coach: Sergio Gonzalez

RECORDS BOOK



ALL-TIME VARSITY ROSTER (FIRST SEASON: 1996; COMPLETE THRU 2011)

A

ABERG, Elina 11
ALVAREZ, Janina 97,98
ANDRUS, Catherine 10, 11
ARMSTRONG, Tama 96
AUGUSTINE, Joann 96
AWOKE, Hiywote 96,97,98,99

B

BABUCHIWSKI, Dorothy 03
BALLOU, Nicole 99
BARRETO, Michelle 00,01
BASKOUS, Dena 05, 06, 07
BAYIOKOS, Amanda 04, 05, 06, 07
BAYIOKOS, Cindy 05, 06
BECKER, Melissa 97,98
BESTAWROS, Mariam 09, 11
BHANDERI, Nilam 97,98,99
BILLING, Camile 10, 11
BORTH, Michelle 07, 08, 09, 10
BUCHALA, Sarah 01,02,03,04

C

CALDERON, Daisy 00,01,03
CARON, Mary 98,99
CHOY, Yvonne 96,97,98
CISLO, Jenny 11
CLOVIS, Darlene 00
COHEN, Krista 05, 06, 07
CORREA, Claudia 03
CROWLEY, Kate 99
CUBIAS, Marina 96



Erin Morris

D

DeANGELIS, Vallerie 00
DeROSA, Katie 05, 06, 07, 08
DELLAVALLE, Megan 11
DORN, Jennifer 00,01
DOTTEN, Amanda 09, 10
DUNCAN, Kate 02,04

E

ELLIOT, Laura 96,97

F

FARROW, Ann 96
FERRERA, Michelle 11
FINN, Maura 03,04
FLORES, Linda 00,01

G

GANNON, Amanda 07, 08
GO, Jean 02
GOLDMAN, Alexis 97,98,99,00
GOUGH, Heather 01
GRIFFITHS, Nadia 97,98,99
GRISWOLD, Kimberly 02
GRUENEWALD, Wendy 96
GUARDADO, Luisa 99
GUISHARD, Corina 02

H

HENRY, Margarette 96,97,98
HEPFINGER, Katie 04, 05, 06, 07
HERMAN, Susan 97,98
HERNANDEZ, Heather 00
HERRERA, Jennifer 00,02,03,04
HERSHFIELD, Meryl 09, 10, 11
HIGGINS, Teresa 06
HORDYNSKY, Natalie 01
HOUSER, Leila 99,00
HOWE, Rebecca 00
HOWELL-HARRIES, Kyrsten 07, 08, 09, 10

I

INTASAMAKUL, Joy 01,02

J

JONES, Kylie 11
JOY-WAY, Alida 96,98

K

KALCZEWSKI, Jennifer 08, 09, 10, 11
KLING, Lisa 03
KORNMULLER, Anna 10, 11
KOTEL, Dinah 02

L

LaBELLARTE, Christina 08, 10, 11
LARGE, Katie 99
LEIBEL, Katie 01
LEICHTNAM, Elizabeth 02,03,04
LEMARIE, Linda 97,98,99
LOTUFO, Bruna 05, 06
LUNAN, Piper 08, 09, 10

M

MACAULAY, Keri-Anne 04, 05
MACIAS, Stephanie 04, 05, 07
MAKLOUFI, Keltoum 99
MARTINEZ, Dolores 00
MAYFIELD, Taekia 00
MEDINA, Xiomara 07
MELE, Sadie 07, 08, 09, 10
MENDOZA, Monica 00
MERCHAN, Karina 01,02
MESIDOR, Ketsia 96,97,98
MEVS, Carmina 99,00
MISIUNAS, Jayna 02,03,04
MISIUNAS, Jillian 02,03,04
MORALES, Briana 05, 06, 07, 08
MORRIS, Erin 09, 10, 11
MOTTA, Millie 09
MOVING, Lisa 97,98
MUNOZ, Mary 07, 08, 09, 10
MURRAY, Amanda 11



RECORDS BOOK

ALL-TIME VARSITY ROSTER (FIRST SEASON: 1996; COMPLETE THRU 2011)

N

NAITO, Chacha 09
NOBLES, Chelsea 06

O

OBAZENU, Veta 99
O'CONNOR, Jackie 99
OSSA, Ana 03
O'DWYER, Aine 05, 07

P

PARISI, Casey 10
PASICIEL, Cielianna 08, 09, 10, 11
PATEL, Lali 98
PATEL, Sushreeta 97
PAUL, Melissa 07, 09
POSSIBLE, Vicki 96,97,98
PHILLIPS, Marie 98,99
POWDHAR, Joanna 05, 06

R

RAGNI, Caitlyn 08, 09, 10, 11
RAMIREZ, Magda 99
RAPATSKI, Brandi 96
REDDEN, Amanda 10, 11
REEBER, Lisa 99
REYNOLDS, Leigh 04
RIBELIN, Nettie 00,01
RIVERA, Betty 99,00
RIVIRIEGO, Sheila 99
RODRIGUES, Melanie 10
RODRIGUEZ, Natalie 96,97,98,99
ROMANO, Mary Kate 02
RUSCIANO, Sarah 07

S

SALGADO, Erin 02,03,04, 05
SAMUEL, Jaky 08
SCHMITT, Erin 10, 11
SEELY, Grace 11
SEPULVEDA, Angelica 05, 06, 07
SIMEON, Verdane 96
SMITH, Patricie 99
SOLT, Karisa 01,02,03
SOLU, Alyn 96,97,98
STOLTZ, Heather 96

T

TALAI, Mina 03
TAUGHER, Erika 04, 05, 07, 08
TAYLOR, Christi 07, 08, 09, 10
TOMCZAK, Anna 99,00,01



Meryl Hershfield

TUDOR, Lauren 99

TURNBULL, Breanna 06

TUSTIN, Rebecca 10

U

UKAEGBU, Gechi 09, 10, 11

V

VAZQUEZ, Nicole 11
VINSKI, Emma 05, 07, 08

W

WALLACE, Leah 96,98,99
WARE, Maiysha 96,97,98
WASKO, Cathy 01
WASHINGTON, Kori 07, 08, 09, 10
WHITWORTH, Elaine 01
WHITWORTH, Elizabeth 01
WIELAND, Rachel 96
WILKINSON, Jessi 01
WU, Peychi 97,98,99

Z

ZAMBRANO, Claudia 97,98
ZIEMBA, Melissa 96

Returning players in bold

*Corrections welcome. Please contact
Stephanie Pillari at pillari@njit.edu*

RECORDS BOOK



NJIT HALL OF FAME

Name	Grad. Year	Contribution	Sport (s)	Years Active	Year of Induction	Name	Grad. Year	Contribution	Sport (s)	Years Active	Year of Induction
BAKUN, Andrew I.	1982	Athlete/Asst. Coach	M-Soccer	1978-81/ 90-91	2005	IRIS, Herb	1951	Benefactor	--	--	2007
BAKUN, Myron	1967	Athlete	M-Soccer	1964-66	1991	KAMINSKY, Nicholas J.	1978	Athlete	Baseball	1975-78	2006
BARTH, Roland E.	1960	Athlete	M-Fencing	1957-59	2009	KASBARIAN, Raymond P.	1966	Founder/Athlete	Judo	1962-66	1989
			M-Soccer	1956-59		KETZNER, Robert Shelby	--	Coach	Rifle	1962-86	1987
BAUDER, Fred "Coach"	--	Coach	M-Basketball	1932-61	1989	KHOWAYLO, Alex	1969	Athlete	M-Soccer	1960-63	1996
BLUM, Raymond E.	1950	Distinguished Alumnus	Speedskating/Cycling	--	1996	LUBETKIN, Charles "Tudy"	1953	Athlete	M-Basketball/M-Track	1949-52	1994
BORJA, Hernan "Chico"	1981	Athlete	M-Soccer	1977-80	1986	LYNCH, Robert K.	1984	Athlete/Coach	M-Fencing	1977-80/ 86-91	1993
BORNAKO, Gregory "Egor"	1970	Athlete	M-Fencing	1966-70	1987	MacDONALD, Dan	1984	Athlete	Baseball	1981-84	1992
BOWSER, Hamilton V.	1952	Athlete	M-Fencing	1948-52	1989	OLSEN, Richard J.	1969	Athlete	M-Basketball	1965-69	1988
BRADLEY, Thomas	1978	Athlete	M-Swimming	1974-78	1990	OLSON, George R.	1977	Athlete	Baseball	1974-77	1987
BROWN, Andrew D.	1963	Athlete	M-Soccer	1956-59	2006	PAULIUS, Raymond V.	1985	Athlete	M-Soccer	1980-83	2006
CRIMMINS, David	1952	Athlete	M-Fencing	1948-52	2007	RODGERS, Tarik	1996	Athlete	M-Volleyball	1992-95	2010
CRUZ, Edward	1963	Athlete	M-Soccer	1959-62	1995	ROGERS, Warren	1988	Athlete	M-Basketball	1983-87	1993
DAWSON, Marilyn E.	1986	Athlete	WVB/WBKB/SB	1982-86	1991	ROMULUS, Rudy	1991	Athlete	M-Volleyball	1988-91	1996
DeNICOLA, Carmine P.	1978	Athlete	Baseball	1975-78	2005	ROSS, Jonathan A.	1956	Athlete	M-Soccer	1953-55	2010
DeNURE, Dave	--	Coach	M-Volleyball	1982-98	2009	SARLO, Paul A.	1992	Athlete	Baseball	1989-91	2005
			W-Volleyball	1986-90		SCHMID, John "Gene"	--	Asst Coach/Coach	Baseball	1968-72/ 73-97	2002
			W-Basketball	1987-88							
DeVITO, Louis	1960	Athlete	M-Soccer/M-Fencing	1956-60	1992	SIMON, J. Malcolm	--	Coach	M-Soccer	1955-83	1994
DIAZ, Joe A.	1977	Athlete	M-Soccer	1973-76	1993			Director of Athletics	--	1983-94	
DRURY, Eugene M.	1963	Athlete	M-Tennis	1960-63	1988	SKURLA, Peter J.	1941	Athlete	Bowling	1937-41	1992
ENG, Katherine	1993	Athlete	W-Volleyball	1989-92	2007	SORIANO, Gregory	1975	Athlete	M-Fencing	1968-72	2010
ETIENNE, Yves	1979	Athlete	M-Volleyball	1976-78	1990	SWANSON, Robert F.	--	Director of Athletics	--	1947-82	1986
FEHN, Gilbert F.	1940	Athlete	M-Basketball/M-Tennis	1936-40	1992	TAETZSCH, Robert	1952	Athlete	M-Fencing	1948-52	2007
FITZGERALD, Joseph M.	--	Coach/Asst. Coach	M-Basketball	1961-66/ 52-61	1986	TAETZSCH, William	1952	Athlete	M-Fencing	1948-52	2007
						TOSATO, Lawrence P.	1956	Athlete	M-Basketball/Baseball	1952-56	1987
FLEISHER, Seymour "Zoom"	1951	Athlete	M-Basketball	1947-51	1992	TUBELLO, Jeffrey	1976	Athlete	Rifle	1972-76	1988
GAGLIARDO, Salvatore A.	1985	Athlete	M-Basketball	1981-85	1995	VAN WRIGHT, Nevea	1997	Athlete	W-Basketball	1991-96	2005
GALLAGHER, Thomas G.	1985	Athlete	M-Basketball	1981-85	1991	WALSH, John J.	1966	Athlete	MSoc/MBKB/Baseball	1962-66	1986
GIOVANNOLI, Arnold L.	1953	Athlete	M-Basketball	1950-53	1993	WASNIEWSKI, Frank	1980	Athlete	M-Tennis	1977-80	1990
GOLDRICK PITT, Elizabeth M.	1990	Athlete	WVB/SB/WBKB/WTen	1985-90	1995	WELGOS, Bob	1962	Athlete	M-Basketball/Bowling	1959-62	2005
GRAZIANO, Jean M.	1989	Athlete	Softball	1986-89	2009	WOROBEC, Myron S.	1966	Athlete	M-Soccer	1962-65	1994
GRUENEWALD, Wendy A.	1997	Athlete	WBKB/SB/WVB/WSoc	1992-96	2003	YONEZUKA, Yoshishada	--	Founder/Coach	Judo	1962-?	1991
HAASE, Jay W.	1975	Athlete	M-Fencing	1971-75	1988	ZORN, Werner	1962	Athlete	M-Soccer	1958-61	1988
HAMMOND, Kenneth W.	1979	Athlete	M-Soccer	1974-77	2003						
HANDWERKER, Andy	1963	Athlete	M-Soccer	1959-62	2002	Teams	Year	Accomplishments		Year of Induction	
HAUSSER, Paul C.	--	Administrator	--	1953-91	1990	Men's Soccer	1960	NAIA co-National Champion		1988	
		Coach	Fencing/Baseball	1954-88/53-72		Men's Basketball	1981-82	NJIT's first ECAC and IAC champion		1990	
HUBEY, Ali	1972	Athlete	M-Soccer	1968-71	1990	Baseball	1982	NJIT's second ECAC and IAC champion		1993	
HURTADO, Fabian	1975	Athlete	M-Soccer	1970-74	1987						

NJIT's first multi-sport conference affiliation at the Division I level, came when the Highlanders aligned with the Great West Conference, which began play as an expanded multi-sport conference in 2009-10.

Member schools are spread over seven states and four time zones, giving each school added exposure in new destinations. The conference, which began as a football-only league, took a giant leap in the collegiate athletic world with expansion to include a full range of sports and new members.

Joining the league in July 2008 were: Houston Baptist, NJIT, North Dakota, South Dakota, Texas-Pan American and Utah Valley. Chicago State accepted the league's invitation to join in October 2008. These seven schools joined football-only members Cal Poly, UC Davis and Southern Utah.

As the conference began planning for multi-team sport competition, several teams were added in women's soccer and baseball to help provide a more diverse and competitive field. Delaware State, Howard and South Carolina State joined as associate members in women's soccer and they formed the East Division, along with NJIT. Northern Colorado and New York Institute of Technology joined as associate members in baseball, while Seattle was added as an associate member in cross country and track and field.

NJIT, Texas-Pan American and Utah Valley had been playing each other in multiple sports, including home-and-home games in men's and women's basketball, since NJIT began Division I competition for the first time in 2006-07.

NJIT and Utah Valley completed their NCAA reclassification and became championship-eligible members of NCAA Division I in September. Houston Baptist announced an agreement with the NCAA that can make HBU an active member of Division I in 2011-12 and North Dakota and South Dakota will be active members of Division I in 2012-13. Texas-Pan American and Chicago State have been active Division I programs for many years.



The expanded conference is not an automatic NCAA Division I championship postseason qualifier, but it offers the benefit of conference championship competition, stable scheduling opportunities and individual recognition for student-athletes through weekly and season all-conference recognition.

The champion of the Great West Conference men's basketball postseason tournament (hosted in 2011 by Utah Valley) receives an automatic bid into the CollegeInsider.com Tournament (CIT) a 16-team national postseason tournament won by Old Dominion in 2009 and Missouri State in 2010 in a game that was televised nationally on Fox College Sports.

Governance of the GWC remains primarily with the member institutions. Each member institution is represented on the President's Council by its CEO. General operations and management of the Conference is conducted by the Joint Council, comprised of Directors of Athletics and Senior Woman Administrators.

NJIT's sports that compete in championships sponsored by the Great West Conference are: baseball, basketball (men's and women's); cross country (men's and women's); track and field (men's and women's; indoor and outdoor); women's tennis; and, women's volleyball.

Two NJIT sports that do not come under the Great West umbrella continue in their existing conferences—men's soccer in the Atlantic Soccer Conference and men's volleyball in the Eastern Intercollegiate Volleyball Association, which has an automatic NCAA postseason berth, claimed in 2008 by eventual national champion Penn State.

The latest conference news and information is available on-line at <http://www.greatwestconference.org/>.

Ed Grom, Commissioner; Phone: (630) 428-4492; E-Mail: grom@gwconference.org
Mike Sharpe, Assistant Commissioner; Phone: (816) 210-4305; E-Mail: sharp@gwconference.org
Jacque Cottrell, Director of Media Relations (SWA); Phone: (713) 305-8614; E-Mail: cottrell@gwconference.org
Cliff Martin, Media Relations Assistant; Phone: (214) 770-6463; E-mail: martin@gwconference.org

SENIOR ADMINISTRATION

Lenny Kaplan	Director of Athletics
Alexis Schug	Associate Athletic Director/Senior Women Administrator
Joe Caiola	Assistant Director of Athletics/Business/Facilities
Tim Camp	Assistant Athletic Director for Sports Information
Marian Johnson	Assistant Athletic Director for Athletics – Compliance
Wenda Noel-Lane	Administrative Assistant for the Director of Athletics
Mike Siegel	Faculty Athletic Representative
Brian Callahan	Assistant Director of Physical Education

ACADEMIC SUPPORT

Sandra Taylor	Associate Director CAPE – Athlete Academic Advisor
Elizabeth Bookwalker	Academic Advisor for SA & Eligibility Certification Officer

ATHLETIC TRAINING

Matt Koscs	Head Athletic Trainer
Paul Grayner	Assistant Athletic Trainer
Brittany Vorndran	Assistant Athletic Trainer

COMPLIANCE

Alexis Schug	Associate Athletic Director/Senior Women Administrator
Marian Johnson	Assistant Athletic Director for Athletics – Compliance

DEVELOPMENT

Darlene Lamourt	Development Officer for Athletics
-----------------	-----------------------------------

FLEISHER ATHLETIC CENTER

Shannon Abraham	Operations Manager/Tickets
Jonathan Walker	Front Desk
Courtney Caden	Receptionist

SPORTS INFORMATION

Tim Camp	Assistant Athletic Director of Sports Information
Stephanie Pillari	Assistant Sports Information Director

STRENGTH AND CONDITIONING

Dan Huff	Head Strength and Conditioning Coach
----------	--------------------------------------

COACHING STAFF DIRECTORY**BASEBALL**

Brian Guiliana	Head Coach
Robbie McClellan	Assistant Coach

MEN'S BASKETBALL

Jim Engles	Head Coach
Mike Spisto	Assistant Coach
Brian Kennedy	Assistant Coach
Michael Brown	Assistant Coach
Matt Healing	Director of Operations

WOMEN'S BASKETBALL

Steve Lanpher	Head Coach
Mark McCaleb	Assistant Coach
LaKea Jones	Assistant Coach
Epiphany Smith	Assistant Coach

MEN'S & WOMEN'S CROSS COUNTRY

Al Alonso	Head Coach
Albert Siuta	Assistant Coach

MEN'S AND WOMEN'S FENCING

Yefim Litvan	Head Coach
Jason Henderson	Assistant Coach

MEN'S SOCCER

Cesar Markovic	Head Coach
Didier Orellana	Assistant Coach
John Ciano	Assistant Coach

WOMEN'S SOCCER

Sergio Gonzalez	Head Coach
Mandi Risden	Assistant Coach
Erwin van Bennekom	Assistant Coach

MEN'S SWIMMING

Michael Lawson	Head Coach
Mark Albright	Assistant Coach
Daniel Schittone	Assistant Coach

MEN'S AND WOMEN'S TENNIS

Mike Sowter	Head Coach
Danielle Viola	Assistant Coach
Bernie Jones	Assistant Coach

MEN'S AND WOMEN'S TRACK AND FIELD (INDOOR & OUTDOOR)

Al Alonso	Head Coach
Albert Siuta	Assistant Coach
Savatheda Fynes Coke	Assistant Coach

MEN'S VOLLEYBALL

Ryan McNeil	Head Coach
Francesca Garay	Graduate Assistant Coach

WOMEN'S VOLLEYBALL

JR Martins	Head Coach
Francesca Garay	Graduate Assistant Coach

FOR GPS USERS

The address for Lubetkin Field at J. Malcolm Simon Stadium, the Estelle and Zoom Fleisher Athletic Center, and the Naimoli Family Athletic and Recreational Facility is 80 Lock Street, Newark, NJ, 07102.

BY CAR

New Jersey Turnpike: Driving North from South Jersey: Take NJ Turnpike to Exit 13A Newark Airport. After toll stay to left and follow signs to Rt. 1 & 9 North. You will merge onto Rt. 1 & 9 North. Airport will be on right. Follow signs for downtown Newark and Rt. 21 North-(left lane exit ramp). Downtown Newark will be in front of you. NYC will be off to your right. Follow Rt. 21North (McCarter Highway). Turn left on Raymond Blvd. Follow Raymond Blvd. past Warren Street traffic light and Fleisher Athletic Center, Naimoli Center, and Lubetkin Field at J. Malcolm Simon Stadium will be to your right (one soccer goal line runs along Warren Street and the soccer sideline parallels Lock Street).

New Jersey Turnpike: Driving South from North Jersey: Take exit 15W to Route 280 West, then follow Route 280 West directions.

Route 280 West: After drawbridge, take Exit 15A (Rt. 21 South - McCarter Highway). Follow Rt. 21 South to Raymond Blvd. Turn right on Raymond Blvd. Follow Raymond Blvd. pass Warren Street traffic light and Fleisher Athletic Center, Naimoli Center, and Lubetkin Field at J. Malcolm Simon Stadium will be to your right (one soccer goal line runs along Warren Street and the soccer sideline parallels Lock Street).

Route 280 East: Take Exit 15 (Rt. 21 South - McCarter Highway). Follow Rt. 21 South to Raymond Blvd. Turn right on Raymond Blvd. Follow Raymond Blvd. past Warren Street traffic light and Fleisher Athletic Center, Naimoli Center, and Lubetkin Field at J. Malcolm Simon Stadium will be to your right (one soccer goal line runs along Warren Street and the soccer sideline parallels Lock Street).

Garden State Parkway (North & South bound): Take exit 145 to Route 280 East, then follow Route 280 East directions.

Route 1 & 9 North & South: Take exit marked Newark, Rt. 21 North (McCarter Highway). Follow Rt. 21 North (McCarter Highway). Turn left on Raymond Blvd. Follow Raymond Blvd. past Warren Street traffic light and Fleisher Athletic Center, Naimoli Center, and Lubetkin Field at J. Malcolm Simon Stadium will be



to your right (one soccer goal line runs along Warren Street and the soccer sideline parallels Lock Street).

Route 78 East: Take Route 78 East to Rt. 21 North. Turn left on Raymond Blvd. Follow Raymond Blvd. past Warren Street traffic light and Fleisher Athletic Center, Naimoli Center, and Lubetkin Field at J. Malcolm Simon Stadium will be to your right (one soccer goal line runs along Warren Street and the soccer sideline parallels Lock Street).

Route 22 East: Take Route 22 East to Route 21 North. Turn left on Raymond Blvd. Follow Raymond Blvd. past Warren Street traffic light and Fleisher Athletic Center, Naimoli Center, and Lubetkin Field at J. Malcolm Simon Stadium will be to your right (one soccer goal line runs along Warren Street and the soccer sideline parallels Lock Street).

Route 21 North: Follow Rt. 21 North to Raymond Blvd. Turn left onto Raymond Blvd. Follow Raymond Blvd. past Warren Street traffic light and Fleisher Athletic Center, Naimoli Center, and Lubetkin Field at J.

Malcolm Simon Stadium will be to your right (one soccer goal line runs along Warren Street and the soccer sideline parallels Lock Street).

Route 21 South: Follow Rt. 21 South (McCarter Highway) to Raymond Blvd. Turn Right on Raymond Blvd. Follow Raymond Blvd. past Warren Street traffic light and Fleisher Athletic Center, Naimoli Center, and Lubetkin Field at J. Malcolm Simon Stadium will be to your right (one soccer goal line runs along Warren Street and the soccer sideline parallels Lock Street).

New York Thruway: Thruway to Exit 14A, Garden State Parkway. Follow Garden State Parkway directions above.

George Washington Bridge: NJ Turnpike South to Exit 15W. Follow Route 280 West directions above.

Lincoln Tunnel: West on Rt. 3 to Rt. 21 South. Turn right onto Raymond Blvd. Follow Raymond Blvd. past Warren Street traffic light and Fleisher Athletic Center, Naimoli Center, and Lubetkin Field at J. Malcolm Simon Stadium will be to your right (one soccer goal line runs along Warren Street and the soccer sideline parallels Lock Street).

From Brooklyn, Queens and Long Island: Take Verrazano-Narrows Bridge (Interstate 278) and follow 278 across Staten Island. Cross Goethels Bridge. Follow signs to New Jersey Turnpike North then follow New Jersey Turnpike directions above.

PARKING

Bus/Van Parking: Visiting buses and vans may usually park on Lock Street adjacent to the athletic center. Please be careful not to block the parking space reserved for the doctor.

Visitor Parking: Visitor parking may be reserved in advance through your host. Otherwise, visitor parking at NJIT is available in the NJIT parking deck. Turn right onto Warren Street. Turn right onto Colden Street and proceed around the block to Summit Street. Parking Deck entrance is located to your right before the intersection with Warren Street.

Parking for on-campus athletic contests: NJIT is offering free off-street parking for fans attending regular season home soccer and volleyball matches and basketball games. The parking entrance, marked by a yellow sign is located on New Street.

OTHER TRANSPORTATION SYSTEMS

Newark Liberty International Airport: Minutes from the NJIT campus. A minibus (Newark Airlink) or taxi service connects the airport with Penn Station in Newark. Bus, Newark Light Rail, and taxi connections are available at the station.

Newark Penn Station: Located in downtown Newark, connections to the NJIT campus may be made by bus, Newark Light Rail, or taxi.

Morris & Essex Broad Street Station:A five-block walk to the NJIT campus via MLK Boulevard to Central Avenue. Taxi service is also available.

Newark Light Rail: From Penn Station in Newark, take the Warren Street stop for the NJIT campus. The Warren Street stop is on the sidewalk behind the press box for Lubetkin Field at J. Malcolm Simon Stadium.

OFFICIAL HOTEL OF THE HIGHLANDERS

SpringHill Suites Newark Liberty International Airport
652 Route 1 & 9 South, Newark, NJ
973/624-5300 (ask for Melanie Schellhas)
ASK FOR SPECIAL NJIT HIGHLANDERS RATE (discount code NJIS for kings, NJIT for doubles)

DOWNTOWN

Hilton Newark Gateway
Gateway Center, Raymond Boulevard & McCarter Highway
Newark, NJ, 973/622-5000

Robert Treat Hotel
50 Park Place, Newark, NJ, 973/622-1900

Hampton Inn & Suites Newark Riverwalk
100 Passaic Ave, Harrison, NJ, 973/483-1900

NEAR NEWARK LIBERTY INTERNATIONAL AIRPORT

Best Western Newark Airport West
101 International Way, Newark, NJ, 973/621-6200

Hilton Newark Airport
1170 Spring Street, Elizabeth, NJ, 908/351-3900

Holiday Inn Newark Liberty International Airport
160 Frontage Road, Newark, NJ, 973/589-1000

2012 Highlanders



Top Row (l-r): Camille Billing, Kylie Jones, Danielle Pierce, Erin Morris, Marissa Borschke, Rebecca Tustin, Jenny Cislo, Catherine Andrus, Assistant Coach Erwin van Bennekom

Middle Row (l-r): Assistant Coach Mandi Ridsen, Megan Dellavalle, Gechi Ukaegbu, Erin Williams-Weir, Samantha Bersett, Larissa, Beer, Emmy Hattle, Alex Adam, Jaclyn Ward, Head Coach Sergio Gonzalez

Bottom Row (l-r): Antonietta Jackson, Amanda Redden, Grace Seely, Abi Fakolujo, Kaelyn Gamel, Erin Schmitt, Meryl Hershfield, Madeline Griep

2012 HIGHLANDERS WOMEN'S SOCCER

AUGUST

17	at Saint Peter's	4:00 P.M.
19	at Rider	5:00 P.M.
24	MARIST	5:00 P.M.
26	at Rhode Island	1:00 P.M.
31	at Temple	4:00 P.M.

SEPTEMBER

2	MONMOUTH	7:00 P.M.
7	QUINNIPIAC	7:00 P.M.
9	WAGNER	1:00 P.M.
14	FAIRLEIGH DICKINSON	4:30 P.M.
16	IONA	7:00 P.M.
20	at Dartmouth	5:00 P.M.
23	at Lafayette	1:00 P.M.
30	at UPenn	1:00 P.M.

OCTOBER

5	at Utah Valley *	7:00 P.M. (MT)
7	COLUMBIA	7:00 P.M.
11	DELAWARE STATE *	7:00 P.M.
13	HOUSTON BAPTIST *(Senior Night)	7:00 P.M.
20	SOUTH CAROLINA STATE * (Alumnae Day)	1:00 P.M.
25	at Howard	7:00 P.M.

NOVEMBER

Great West Conference Tournament

2	GWC Quarterfinals (at Utah Valley)	TBD (MT)
3	GWC Semifinals (at Utah Valley)	TBD (MT)
5	GWC Finals (at Utah Valley)	1:00 P.M. (MT)

Head Coach: Sergio Gonzalez (Salve Regina '00)

Assistant Coaches: Manda Riden (Auburn '99), Erwin van Bennekon (CTSCO Academy '02)

CAPS/Bold = Home matches at Lubetkin Field at J. Malcolm Simon Stadium

* Great West Conference game