



# WOMEN'S SOCCER

2010



[NJITHIGHLANDERS.COM](http://NJITHIGHLANDERS.COM)



NJIT





## TABLE OF CONTENTS

About NJIT .....	2-3
University Administration .....	4-5
Student-athlete support .....	5-6
Athletics Senior Staff .....	6
NJIT in Division I .....	7
Coaching Staff .....	8-9
Roster .....	10
2009 Statistics and Results .....	11
About Newark .....	12
Sports & Entertainment Around Newark .....	13
Athletics Facilities .....	14-15
All-Time Results .....	16
All-Time vs. Opponents .....	16
School Records .....	17
Division I Records/Division I Superlatives .....	18
All-Time All-Conference .....	18
All-Time Roster .....	19
Year-by-Year .....	19
Hall of Fame .....	20
Directions to NJIT .....	21
Great West Conference .....	22

## MEDIA INFORMATION

This guide is designed to assist in coverage of NJIT women's soccer. For home matches, the NJIT sports information office will provide an official box score 10 minutes following each game. Coach Kevin Leacock and requested players will be available for interviews on the field following a 10-minute coolingoff period. Radio broadcast requests should be made at least 10 business days prior to the contest. Requests for coach and player interviews on nongame days should be made through the NJIT sports information office (973-596-8461). Red Bull Arena photo (p. 15) courtesy of Getty Images/RBNY.

## CREDITS

The 2010 NJIT Women's Soccer Guide is a production of the NJIT Sports Information Office in cooperation with the Office of University Communications. Written, compiled and edited by Tim Camp and Stephanie Pillari. Cover and interior design by Karyn Olsen Design. NJIT photographs and information courtesy of University Communications. All interior team and action photography by Larry Levanti.

## WHY THE HIGHLANDERS?

The home of NJIT, University Heights, was formerly known as the Newark Highlands and NJIT's mailing address used to be High Street, until the thoroughfare was renamed in memory of Dr. Martin Luther King, Jr. In 2006-07, NJIT athletics, in keeping with its move to NCAA Division I, unveiled a new graphic identity, which includes a new Highlanders logo (shown). Developed by CN Foundry for NJIT, the logo depicts the traditional Highlander, whose ferocity and bravery against all odds are the stuff of legend.



## QUICK FACTS

### New Jersey Institute of Technology

**Location:** University Heights, Newark, NJ

**Founded:** 1881

**Enrollment:** 5,924 (undergraduate)

**NJIT website:** [www.njit.com](http://www.njit.com)

**Nickname/Colors:** Highlanders/Red and White (Blue accent)

**Home Court/Capacity:** Estelle and Zoom Fleisher Athletic Center/1,500

**Affiliations:** NCAA Division I, ECAC

**Conference:** Great West Conference

**University President:** Dr. Robert A. Altenkirch

**Director of Athletics:** Lenny Kaplan

**Athletic Department Phone:** 973-596-3636

### Sports Information

**NJIT Athletics website:** [www.njithighlanders.com](http://www.njithighlanders.com)

**Results hotline:** 973-596-5555

**Assistant AD for Sports Information:** Tim Camp

**Phone/Email:** 973-596-8461/[timothy.camp@njit.edu](mailto:timothy.camp@njit.edu)

**Assistant SID:** Stephanie Pillari

**Phone/Email:** 973-596-8324/[pillari@njit.edu](mailto:pillari@njit.edu)

### Women's Soccer

**Head Coach (alma mater, year):**

Kevin Leacock (Long Island University 1999)

**Phone/Email:** 973-596-8329; [leacock@njit.edu](mailto:leacock@njit.edu)

**Career Record:** 9-25-3 (2 seasons)

**Graduate Assistant Coach:** Manda Ridsen (Auburn 1999)

**Captains:** Game captains

**2009 overall:** 7-9-2

**GWC Record/finish:** 4-1-1/1st (East Division)

## ON THE COVER:

*Front cover:* (left to right) Christi Taylor, Kori Washington, Mary Munoz

*Inside back cover:* 2010 team photo

*Back cover:* 2010 schedule; a night view of the NJIT campus overlooking downtown Newark

**NJIT is New Jersey's Science & Technology University. With roots going back to 1881, when it was founded as Newark Technical School, New Jersey Institute of Technology observed its 125th anniversary in 2006.**

Located in University Heights, Newark, NJ, home to more than 30,000 college students, NJIT's campus is just 10 miles from New York City.

Playing a critical role in shaping New Jersey's future, NJIT, as a major public technological university, is an important pipeline for the flow of technology into society. The university's educational programs prepare students to be leaders in the technology-dependent economy of the 21st century. University researchers seek new knowledge to improve processes and products for industry. Through public and private partnerships and economic development efforts, the university helps to grow new business ventures that fuel the economy.

In recent years, NJIT has put more than \$83 million toward new and improved buildings and facilities on the 45-acre campus, including biomedical engineering labs and a campus center.

## Instructional Programs

NJIT offers an ever-expanding array of educational programs, with eight new academic programs approved beginning in 2009-10, which comes after the addition of 14 new programs in 2008. As of 2009, NJIT



lists 55 bachelor's degree majors, 53 master's degree programs and 19 doctoral programs — through six schools:

**Newark College of Engineering**  
**College of Architecture and Design**  
**College of Science and Liberal Arts**  
**School of Management**  
**Albert Dorman Honors College**  
**College of Computing Sciences**

NJIT has 416 full-time faculty; more than 98 percent of whom hold the highest degree in their field. The student-faculty ratio is 13:1, with more than 5,300 undergraduate students and more than 2,800 graduate students. Our students hail from 33 states and more than 100 countries to rank eighth in the nation for diversity.

Albert Dorman Honors College enrolls more than 500 students who take advantage of honors courses, research opportunities, advising and mentoring. Honors College students have SAT scores ranking in the top 10 percent nationally.

With more than 44,000 alumni, NJIT is rated by U.S. News and World Report as a top-tier research university offering bachelor's, master's and doctoral degrees.

## Research

NJIT drew more than \$75 million in research funding in 2005 and faculty members welcome student collaboration on research projects.

## Economic Development

NJIT is committed to economic development for Newark and the region. The university operates several outreach centers that provide direct technical assistance to the state's businesses with the goal of helping small and medium-sized companies. NJIT is also the home of New Jersey's oldest and largest incubator facility, and was one of the first institutions in the nation to adopt economic development as a fourth mission element, together with instruction, research and community service. More than 60 technology start-up companies, many of which hire NJIT students, are on campus.

## The Career Edge

All 10 of the majors with the highest starting salaries for 2005-06 grads are in engineering, computing and business, according to the National Association of Colleges and Employers.

Computer and data processing services lead the list of the 10 fastest-growing occupations in projections compiled by the U.S. Department of Labor. Computer-related employment is expected to grow 117 percent by 2008, according to the Career Guide to Industries.

As technology changes all fields, those with science and technology backgrounds are positioned to lead. Among the CEOs of the S&P 500 companies, engineering is the single largest undergraduate degree and more than half of CEOs have undergraduate degrees in engineering, business management, science, math and computing.





## The Global Edge

The diversity in NJIT's student body and faculty prepares graduates to understand and succeed in the global marketplace. NJIT was named among the world's top 500 universities in a study by the Institute of Higher Education, Shanghai Jiao Tong University.

## The Technology Edge

NJIT has been designated as one of the nation's most technologically sophisticated universities by Forbes.com and a Princeton Review survey and the university has received major funding from the National Science Foundation and the National Security Agency in recent years.

## The Academic Edge

NJIT has long been a national leader in applying new technologies and approaches to the education experience. NJIT was a pioneer in requiring computer science for students in all majors and the School of Architecture has led innovations in teaching CAD and digital design. The School's innovative "paperless" first-year program was recently cited by Campus Technology Magazine.

Students have a wide range of educational choices in building an interest-tailored program. Among their options are cross-enrolling at neighboring Rutgers to enrich their program with subjects such as music and languages.

NJIT students learn emerging technologies from researchers behind the technologies,

developing valuable marketplace skills. Real-world experience through experiential learning makes graduates more marketable, with many co-op opportunities leading to permanent jobs.

## The Regional Edge

New Jersey, with America's highest concentration of pharmaceutical, hi-tech, biotech, and medical device companies, is the place to study technology. It has the nation's highest per capita number of engineers and scientists as residents, while also leading in per capita rate of patents issued. Further, the Newark-New York region is a living laboratory for architecture and building sciences, environmental engineering and transportation.

## The Research Edge

NJIT has been designated by the State of New Jersey as the Homeland Security Technology Systems Center and NJIT operates the world-renowned Big Bear Solar Observatory.

State Legislature, recognizing an urgent need, sought a home for what would be the state's technical school. The efforts of Newark's public and private sectors resulted with the opening of Newark Technical School, addressing the state's need.

Over time, the university expanded its curriculum and mission. In 1919, the university established baccalaureate programs in three engineering fields. By the middle of the 20th century, Newark Technical School was transformed into the robust Newark College of Engineering.

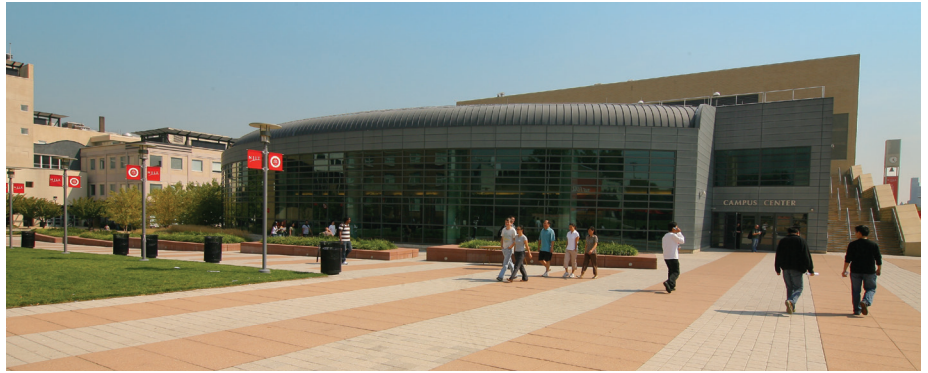
The post-war period was one of enormous activity with regular expansion of the campus, as well as the introduction of doctoral level programs. In 1975, with the addition of the New Jersey School of Architecture, the institution had evolved into a technological university, emphasizing a broad range of degrees and dedication to significant research and public service. Newark College of Engineering, stronger than ever, remained intact, but a new university name — New Jersey Institute of Technology — reflected the institution's expanded mission.

## A History of NJIT

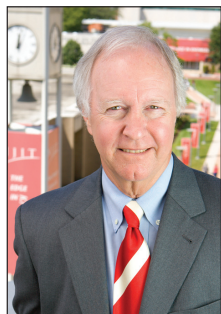
From the Industrial Revolution to the Information Age, New Jersey Institute of Technology has a rich history with its beginnings developing from the industrial age.

In 1881, an act of the New Jersey

A broadened mission called for the creation of a residential campus and the opening of NJIT's first dormitory in 1980 began a period of steady growth that continues. Two new schools were established during the 1980s—the College of Science and Liberal Arts (1982) and the School of Industrial Management (1988). The Albert Dorman Honors College was established in 1994, and the newest school, the College of Computing Sciences, was created in 2001. Beginning in 2009 the College of Architecture and Design was created to house the New Jersey School of Architecture and the new school of Art and Design.







## Dr. Robert A. Altenkirch

### President

Having joined NJIT as its seventh president in July 2002, Dr. Robert A. Altenkirch is leading the university in a period of multi-layered growth.

In recent years, NJIT has put more than \$83 million toward new and improved buildings and facilities, while also drawing similar dollars in annual research funding.

Under President Altenkirch, NJIT has expanded its course offerings, with 16 new degree programs added in the 2008-09 academic year alone, and 13 more in various stages of development for implementation in the following two years.

Coinciding with the expansion is NJIT's transition from a smaller commuter campus to a larger institution with a larger resident student population. The incoming class of 2013 was the

largest in the history of the school, and more than half the freshman class resides on campus.

Tied to that transition is Altenkirch's strong belief that the home institution in New Jersey's largest city needs to be residential and provide the experiences associated with a residential campus. At the same time, Altenkirch is committed to NJIT's involvement with the community in its home city of Newark.

Intercollegiate athletics fits those goals naturally and upgrading NJIT athletics has been a priority of Altenkirch's presidency going back to November 2002 meetings that led to NJIT's reclassification to NCAA Division I.

Adding a personal dimension to his support, Altenkirch, a multi-sport athlete in high school, freshman baseball player at Purdue University, and a former college soccer official, and his wife, Beth, are regular attendees at NJIT competitions, home and away.

Immediately before his selection as president of NJIT, Altenkirch was vice president for research at

Mississippi State University (MSU), a position he held from 1998 to 2002.

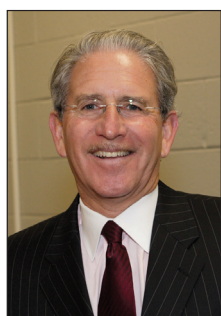
Prior to his appointment as vice president at MSU, Altenkirch served as dean of the College of Engineering and Architecture at Washington State University (1995-98).

From 1988 to 1995, he was dean of the College of Engineering at MSU. He also served as professor and chair of mechanical engineering at the University of Kentucky (1975-88).

Altenkirch holds a PhD from Purdue University, an MS from the University of California, Berkeley, and a BS from Purdue, all in mechanical engineering.

He is the author of over 50 publications and nearly 100 presentations in combustion and heat transfer and served as principal investigator for 10 Space Shuttle experiments investigating the spread of fire in reduced gravity.

He is a fellow of the American Society of Engineers and in 2008 received the Ellis Island Medal of Honor.



## Dr. Joel Bloom

### Vice President for Academic and Student Services

Dr. Joel Bloom, who joined NJIT in July 1990, is responsible for eight divisions of the university, including physical education and athletics.

In 1998, Bloom was appointed the first dean of the Albert Dorman Honors College in addition to his vice president responsibilities. The honors college enrolls over 500 students, including residents of 15 states and several foreign countries. The combined average SAT score is over 1300 and freshmen

typically have ranked in the top 10 percent of their high school graduating class. Honors College students maintain a grade point average higher than 3.5.

Prior to his arrival at NJIT, Dr. Bloom served seven years as assistant commissioner of the New Jersey Department of Education for the Division of General Academic Education. He was responsible for managing many of the education department's initiatives, over 300 grants and contracts, and a \$24 million budget.

Formerly a teacher and school administrator in New York City Public Schools, Dr. Bloom was also a director of research and instructor at Teacher's College, Columbia University.

He is chair of the Greater Newark Consortium for Pre-College Education and vice chair of the State Board for Communities and Schools. He serves further as a member of numerous boards at the state, regional and national levels and has received national and state education awards, as well as federal, foundation and corporate grant awards. He has published journal articles and presented papers on school improvement, curriculum development, college transition and student assessment.

Dr. Bloom holds a master's degree and a doctorate from Teacher's College, Columbia University. He also earned master's and bachelor's degrees from Hunter College of the City University of New York.



## Lenny Kaplan

### Director of Athletics

Since taking over as head of NJIT's division of physical education and athletics in August 2000, Lenny Kaplan has been instrumental in guiding NJIT's reclassification to NCAA Division I.

Kaplan helped stabilize and expand a program that was entering its fourth year in Division II when he arrived in Newark. In late 2002, after discussions

with university President Dr. Robert A. Altenkirch and Vice President Dr. Joel Bloom, Kaplan took on the task of steering NJIT's programs into Division I, a process that reached fruition with the NCAA's granting active Division I status, with full championship eligibility effective September 1, 2009.

Throughout Kaplan's tenure, NJIT has enhanced the athletics program, particularly in areas that benefit the student-athletes directly.

The sports offerings have expanded to its current 18 varsity programs. And since 2004, NJIT has renovated its two main on-campus venues—Lubetkin Field at J. Malcolm Simon Stadium at

Lubetkin Field and the Estelle and Zoom Fleisher Athletic Center. Further, construction has begun on the Naimoli Family Recreation Center, a 25,600-square foot facility on the site of the old tennis courts that will enhance the recreational and intercollegiate opportunities on campus.

The school also signed a 10-year partnership to play all home baseball in the professional Bears and Eagles Riverfront Stadium and later agreed to host basketball in the new Prudential Center, downtown Newark home of the NHL's New Jersey Devils.

Under Kaplan's leadership, many teams achieved regional and national Division II ranking. Success for several women's teams was unprecedented, with



basketball, tennis and soccer all reaching postseason play for the first time in his administration.

Additionally, men's volleyball captured a 2007 divisional championship in the Eastern Intercollegiate Volleyball Association and the next year reached the EIVA playoff semifinals hosted by eventual 2008 national champion Penn State.

## Sports Medicine

NJIT sports medicine is moving forward with expanded facilities and a staff of three full-time trainers led by head trainer Matt Koscs, MS/ATC, with assistant trainers Paul Grayner, MEd/ATC, and Sandra Brendle, MEd/ATC. They work with team physicians Louis Rizio, MD, and Stephen Matta, DO.

**Matt Koscs**, who earned both his bachelor's and master's degrees from the University of Delaware, has served NJIT as head trainer since July 2009, a year after he joined the staff as an assistant trainer. As an undergrad at Delaware, he was recipient of the Paris Delligatti Memorial Award for Excellence in Athletic Training.

Prior to NJIT, he served three years as head trainer at Hodgson Vocational Technical High School in Newark, DE. He also worked with soccer clubs in Delaware and was employed at Christiana Care Physical Therapy Plus, in Newark, DE.

**Paul Grayner**, who holds a bachelor's degree from Saint Leo College in Florida and a master's from American University in Washington, DC, has a diverse background in athletic training, having served at the college and professional levels, as well as in a fitness center setting. He joined the NJIT staff late in 2008.

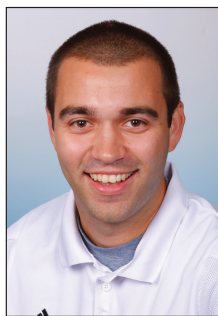
From the mid-1970s to the mid-1980s, he was a trainer in the minor league systems of the New York Yankees and New York Mets and in 1984 he was assistant trainer with the Mets. He later worked with the Long Island Knights professional basketball team.

At the collegiate level, he was head trainer at Fairleigh Dickinson University in Teaneck, NJ from 1989 to 1998 and earlier worked as an assistant trainer at Hofstra, Adelphi and FDU.

**Sandra Brendle**, who joined the NJIT staff as an assistant trainer in the summer of 2009, earned her bachelor's degree, majoring in athletic training, from Greensboro (NC) College in 2007. She earned her master's in athletic training at Old Dominion University in May 2009. At ODU, she

Kaplan guided the Highlanders toward further stability with membership in the newly-expanded all-sports Great West Conference, which offers a conference home for 11 of NJIT's varsity sports.

NJIT's outstanding home facilities will allow it to host conference championships in the Great West Conference and allowed it to host ECAC postseason championships in 2005-06.



**Matt Koscs**

worked with seven teams and was on the medical staff for the 2008 NCAA Division I Women's Basketball Tournament first and second rounds. At Greensboro, she was 2006 Athletic Training Student of the Year and worked on the 2004 NCAA Division III Men's and Women's Soccer Championship tournament medical staff.

**Dr. Rizio** is a board certified orthopedic surgeon and is fellowship trained in the field of sports medicine. He is a graduate of Rutgers and after earning his medical degree from the UMDNJ/New Jersey Medical School, Dr. Rizio completed his orthopedic residency at Tufts University in Boston.

He then completed a sports medicine fellowship at the University of Miami and was assistant team physician of the Hurricanes, as well as the Miami Dolphins, the Miami Hurricanes.

Dr. Rizio practices at the New Jersey Sports Medicine Institute in Livingston, NJ. Prior to starting his own practice, Dr Rizio was the Chief of Sports Medicine at the NJ Medical School from 2000-2005. He is affiliated with four New Jersey hospitals: St. Barnabas Medical Center (Livingston); Short Hills Medical Center (Short Hills); Mountainside Hospital (Montclair); and, Overlook Hospital (Summit).

**Dr. Matta**, who is board certified in family medicine, currently specializes in primary care sports medicine at Mountainside Hospital in Montclair, NJ, a post he assumed after three years in the family practice residency program at Valley Baptist Medical Center in Harlingen, TX. He is a 2007 graduate of a five-year DO/MBA dual degree program with Philadelphia College of



**Paul Grayner**

Before coming to NJIT, Lenny Kaplan served 11 years at Manhattan College, where he began as Manhattan's director of operations and was assistant athletics director from 1991-2000.

Kaplan, a 1988 graduate of St. John's University with a degree in athletics administration, resides in Merrick, NY, with his wife, Nancy, and their sons, Michael and Joshua.



**Sandra Brendle**

Osteopathic Medicine for his medical degree and Saint Joseph's University for an MBA in healthcare administration. He is a 2002 magna cum laude graduate of Duquesne University in Pittsburgh, with a BS in honors chemistry. He and his family reside in Belleville, NJ.



**Dan Huff**

## Strength and Conditioning

Strength and conditioning is a key part of a successful Division I program, with an eye toward maximizing individual and team performance in competition. The strength and conditioning coach also works closely with the Athletic Training Staff in the areas of injury prevention and injury rehabilitation.

The 2008-09 year brought another dimension to NJIT athletics with the hiring of **Dan Huff**, CSCS, as the program's first full-time strength and conditioning coach. In addition to the hiring of a full-time coach to coordinate the strength and conditioning, NJIT renovated the weight rooms and purchased new equipment, with the area dedicated to use by the Highlander teams.

Huff previously served five years as strength and conditioning coordinator at Fairleigh Dickinson University in Teaneck, NJ, from 2003 to 2008, working with an 18-sport NCAA Division I program.

Huff was Sports Performance Director for Velocity Sports Performance in Wall, NJ, immediately before accepting his position at NJIT. He is a graduate of William Paterson University of New Jersey. He holds numerous certifications.



## Academic Enrichment

NJIT's Center for Academic and Personal Enrichment (CAPE) added a new component in 2007 with the addition of an Associate Director position that was created for the specific purpose of serving the needs of NJIT's student-athletes.

The position focuses on five key areas: academic support, career development, personal development, leadership and community service including the Student-Athlete Advisory Committee and CHAMPS Life Skills for NJIT's nearly 300 student-athletes.

**Sandra Taylor** filled the post in January 2010, having previously spent her professional career at Manhattan College, which is also her alma mater.

Working at Manhattan, a founding member of the Metro Atlantic Athletic Conference, Taylor was most recently Associate Director of Athletics and Senior Woman Administrator, filling those posts from 1996 to 2010.

For much of that time (1995-2003), she was Chief Athletic Department Compliance Officer. She began her service at Manhattan as Athletic Department Ticket Manager, serving in that capacity from 1993 to 2003.



**Sandra Taylor**

She served on numerous NCAA, conference and internal college committees, including service on the NCAA Division I Management Council from 2004 to 2007 and as chair of the NCAA Women's Lacrosse Committee from 2002 to 2006.

She earned both her bachelor's degree in secondary education and her master's degree in special education from Manhattan College and is a doctoral candidate in educational leadership at St. Mary's University in Winona, MN.

Sandra and her husband, Ken, who is Associate Commissioner for Men's Basketball and Baseball at the MAAC, reside in Monroe Township, NJ, with their daughters, Katherine, who was born in May 2004, and Samantha, who was born in July 2009.



**Tim Wuorinen**

In 2008-09, **Tim Wuorinen** moved over to CAPE as eligibility certification officer/academic advisor, having spent the previous five-plus years working in the NJIT Department of Athletics as assistant athletic director and coordinator for compliance and student-athlete services.

Tim Wuorinen was a compliance fellow with the MAAC and he has worked in the athletic offices of four colleges, including Western New England College, his undergraduate alma mater. In addition to his bachelor's degree from Western New England, he earned a master's degree from NJIT.

Tim and his wife, Tara, who is the Academic/Athletic Coordinator at Saint Peter's College, reside in Aberdeen, NJ. Their son, Tyler, was born in May of 2010.

NJIT's Center for Academic and Professional Enrichment, headed by **Dr. Marybeth Boger**, is a resource available to all students within NJIT's Student Services Division. The CAPE provides academic support services and activities to enhance students' academic and professional development and it works with academic and administrative departments to help students develop the necessary analytical and problem-solving skills to become independent learners.

CAPE provides tutoring, student success workshops and testing accommodations.

## ATHLETICS SENIOR STAFF



**Alexis Schug**

Assoc. Director of Athletics/SWA  
(973) 596-8452  
schug@njit.edu



**Joe Caiola**

Asst. Director of Athletics/  
Business & Facilities  
(973) 642-7224  
caiola@adm.njit.edu



**Tim Camp**

Asst. Director of Athletics/  
Sports Information  
(973) 596-8461  
timothy.camp@njit.edu



Beginning on September 1, 2009, the entire NJIT athletics program officially gained across-the-board active membership in NCAA Division I, completing a process that began officially in 2003.

NJIT, its teams, and student-athletes enjoy the full benefits of Division I membership, including eligibility for Division I postseason championship competition and the inclusion of the Highlanders among the national Division I leaders in statistics maintained by the NCAA.

Within months of NJIT's active Division I membership, the school won its first national Division I statistical championships, as women's volleyball player Sabrina Baby led the nation in digs per set, while she and her teammates captured the team digs crown for digs, as well.

The NCAA's decision making NJIT a full member of Division I completed a specific timetable that required NJIT and its Department of Athletics to meet a series of annual benchmarks before proceeding to the next step.

NJIT, which previously competed in NCAA Division II, first moved to reclassify its men's soccer program in 2003. The move grew out of November 2002 meetings among President Robert A. Altenkirch, Vice President Joel Bloom, and Director of Athletics Lenny Kaplan. From there, came a proposal from Dr. Altenkirch to the Board of Trustees, which unanimously approved in February 2003 a plan to reclassify men's soccer to Division I. Little more than two years later, the NCAA approved NJIT's proposal to begin advancing its entire program to Division I.

Men's soccer achieved active Division I status in 2005 and NJIT women's soccer became postseason-eligible in 2007. The remainder of NJIT's athletics program also began reclassifying in 2005, with active status taking longer for an entire program than under the single-sport-per-gender track used for the two soccer teams.

In 2005-06 the lion's share of the competition all but men's soccer came at the Division II level. In 2006-07, 2007-08, and 2008-09, NJIT's teams competed at the Division I level and complied full with NCAA Division I rules, but were not eligible for championships at the top level.

Every facet of the program has been enhanced in the reclassification, with a special emphasis placed on student-athlete welfare. Facility upgrades have gone along with sports medicine staff expansion, a strength and conditioning program, and academic enrichment. NJIT has also built a model NCAA Division I rules compliance regimen within its athletics program and across the entire university.



*Piper Lunan*

A key late benchmark in reclassification came in the spring of 2009, with NJIT's successful completion of the NCAA Division I certification self-study. An in-depth project that takes approximately one year to complete and involves an on-campus visit from a Peer Review team, Division I certification, renewable every 10 years, is required of all active Division I institutions.

"We completed a major milestone in demonstrating that we have the infrastructure in place and the commitment to compete at the highest levels, not only academically but now athletically as well," said Dr. Altenkirch, who made upgrading athletics a priority from the beginning of his tenure as the seventh President of NJIT in May 2002.

Professor Robert English, the NCAA Faculty Athletics Representative and Interim Dean of the School of Management, added, "I am very impressed with NJIT's student-athletes who have

worked hard to meet the challenge of the heightened level of Division I competition and at the same time continued to excel academically, with many athletes earning academic honors and awards and several earning perfect 4.0 GPAs during the semester of competition."

Further, the NJIT Board of Trustees embraced the transition to Division I as part of the university's strategic plan to enhance the quality of campus life in NJIT's transition to a residential university.

Going back to early announcements of NJIT's NCAA reclassification plans, Altenkirch stated: "As NJIT continues to grow academically, and as a residential university, strengthening the athletics program through the transition to Division I will allow us to align the university with our academic peers."

Already, NJIT's teams have competed throughout the United States, taking on opponents from schools that are instantly recognizable for their stature in academics and athletics.

NJIT teams and student-athletes have faced opponents from seven of the eight Ivy League schools (all except for Brown) and all eight Patriot League schools, including Army and Navy, Bucknell, Lafayette, and Lehigh.

In addition, Highlander teams have taken on teams from such famed conferences as the Atlantic Coast Conference, Big East Conference, Big Ten Conference, and Pac 10 Conference, with competition against Missouri of the Big 12 Conference slated for December 2010 in women's basketball.

Two high-profile opponents--Maryland in men's soccer in 2005 and Penn State in men's volleyball in 2008—won national championships following the same regular seasons in which they faced NJIT.

The Highlanders have also competed against members of all of the conferences based in the Northeastern and Mid-Atlantic regions of the United States, including America East, Atlantic 10, Colonial, Metro Atlantic, Mid-Eastern, and Northeast.

The eighth New Jersey-based institution in Division I, NJIT has competed against all seven of its home state peers, including Big East programs Rutgers and Seton Hall.

NJIT's longest-established Division I program, men's soccer, gained its first win against a Big East foe in 2008, defeating Rutgers a year after topping San Diego State for the Highlanders' first win over a Top 25-ranked team.

With its place in Division I officially certified by the NCAA, NJIT is looking ahead to continued growth. That outlook is consistent with President Altenkirch's frequently expressed view that, "the transition to Division I is just that, a transition, a process rather than an event."

For his part, Director of Athletics Lenny Kaplan said: "We are looking forward to being a solid and successful member of Division I and we are excited by the opportunity to write a new chapter in the history of NJIT athletics."



*Sadie Mele*



## COACHING STAFF



### Kevin Leacock

*Head Coach*

Kevin Leacock ascended to the role of head women's soccer coach prior to the 2008 season after serving the previous three seasons as an assistant coach.

In his time on staff the team made postseason play for the first time in its final season at the Division II level (2005) and then made the transition to NCAA Division I in 2006 and became postseason eligible at the top level in 2007.

Leacock joined the NJIT staff in 2005, serving as full-time Operations Manager for the athletic department and part-time women's soccer assistant. Leacock became full-time women's soccer assistant coach, relinquishing his operations duties, in 2006.

After two seasons as the full-time assistant coach, he led NJIT's program since March 2008, when the previous head coach, Alyssa Radu, resigned to accept a similar position.

Directing NJIT in 2008, he scored his first head coaching victory on September 10 with a 4-2 home win against Wagner.

The 2009 season represented a major step for the program, as it came close to the .500 mark for the first time at the Division I level. Overall, the record was 7-9-2 (one win shy of the program-record eight wins, set in 2005, when the Highlanders were 8-6-3 in their final season in Division II).

Included in NJIT's surge to seven wins in 2009 (up from two the year before) was a 4-1-1 mark in the inaugural season of Great West Conference competition. The 4-1-1 record was good for first place in the four-team GWC East Division.

To go with the improved won-lost record, the 2009 Highlanders also set new program Division I standards in goals for (23, nearly double the previous year's 12) and fewest goals against (25, exactly half the 2008 season total).

*Michelle Borth*

Leacock has played a large role in bringing together the last four recruiting classes, which have seen a steady improvement in the team's skill and depth.

He ran all of NJIT's 2008 practices and spring competition leading up to his being named head coach, but when the team returned in August, the 2008 campaign was undermined from the start of preseason by a spate of injuries, many to the young players who had entered the program in 2007 and 2008.

A native of Trinidad and Tobago, Leacock was a goalkeeper on that country's under-21 and under-23 national teams, where he played alongside many of the players who made international headlines for tying heavily-favored Sweden to open the 2006 World Cup.

He represented his country in the 1993 Central American and Caribbean Games and in the 1994 Pan American Games before coming to the United States in 1995 as a student-athlete at Long Island University in Brooklyn, NY, where he competed for four years and was magna cum laude graduate, twice earning Northeast Conference all-academic honors.

In addition to his work at NJIT, Leacock was recognized at the national level in 2007, when he was selected as one of two assistant coaches to help the United States U16 Girls National Team during its summer training. He was asked back again for domestic training of the US U17 Girls National Team in the summer of 2009.

Leacock holds an NSCAA national diploma, regional goalkeeping diploma, and advanced national diploma. He previously coached an U17 girls team in the New Jersey Region I league.

He and his wife, Shannon Evans, reside in Manville, NJ, with their daughter, Alivia Evans-Leacock, born in December 2009.





## COACHING STAFF



### **Manda Ridsen**

*Assistant Coach*

Manda Ridsen, a New Jersey native, returned to her home state and NJIT in 2008 after four years as an assistant coach at Brown.

She had joined the Bears following a four-year coaching stint at Rutgers University as an assistant/goalkeeper coach. While with the Scarlet Knights, Ridsen helped to lead Rutgers to two NCAA Tournament appearances, advancing to the 2001 Sweet Sixteen, and the 2003 Second Round.

While at Rutgers, Ridsen has also served as an Assistant Director/Goalkeeping Director at the Glenn Crooks Girls Soccer School since 2000.

In addition to collegiate coaching experience, Ridsen helped to lead the 85 Girls (NJ ODP) to a Region I Championship in 2000, and the 85 Girls (NJ ODP) to the ODP National Championships in 2001. She also served as the 87 and 88 Girls (NJ ODP) Goalkeeper Coach in 2001.

A 1999 graduate of Auburn University with a B.S. in Education, Ridsen was a standout performer for the Tigers from 1997-1998, after transferring from Clemson University, where she spent three seasons. She was captain for the 1998 Auburn soccer team and she received an Auburn Scholar Athlete Award. She served on the Student Athlete Advisory Committee at both Clemson and Auburn and appeared in the most minutes in a single-season at Auburn during the 1998 season.



*Amanda Dotten*



*Meryl Hershfield*





## 2010 ROSTER

### NUMERICAL

No.	Name	Yr.	Ht.	Pos.	Hometown/High School
0	Anna Kornmuller	Fr.	5-6	GK	London, Ontario / AB Lucas Secondary School
00	Sadie Mele	Sr.	5-4	GK	Rio Rancho, NM / Rio Rancho
1	Caity Ragni	Jr.	5-10	GK	Mechanicsburg, PA / Trinity
2	Michelle Borth	Sr.	5-10	D	Tacoma, WA / Thomas Jefferson HS, Federal Way
3	Rebecca Tustin	Fr.	5-7	F	Haddon Heights, NJ / Haddon Heights
4	Meryl Hershfield	So.	5-4	MF	Vancouver, British Columbia, Canada / Jess Schwartz College Prep (Phoenix, AZ)
6	Amanda Dotten	So.	5-7	MF	Anchorage, AK / Service
7	Christina LaBellarte	Jr.	5-1	D	Rahway, NJ / Rahway
8	Christi Taylor	Sr.	5-6	MF	Hackensack, NJ / Hawthorne Christian Academy
9	Kyrsten Howell-Harries	Sr.	5-2	CM	London, ON / AB Lucas Secondary
10	Cielianna Pasiciel	Jr.	5-9	D	Hamet, CA / San Jacinto
12	Erin Schmitt	Fr.	5-4	D	Ramsey, NJ / Ramsey
13	Camille Billing	Fr.	5-6	F	Tecumseh, Ontario / St. Anne Catholic
14	Casey Parisi	Fr.	5-5	CM	Santa Rosa, CA / Montgomery
15	Erin Morris	So.	5-10	MF	Potomac, MD / Thomas S. Wooton (Rockville, MD)
16	Piper Lunan	Jr.	5-7	MF	Calgary, Alberta, Canada / Henry Wise Wood
17	Amanda Redden	Fr.	5-4	CM	Hamilton, NJ / Steinert
18	Melanie Rodrigues	Fr.	5-3	MF	Warren, NJ / Watchung Hills Regional
20	Kori Washington	Sr.	5-8	F	Ewing, NJ / The Pennington School, Pennington, NJ
21	Gechi Ukaegbu	So.	5-3	F	Union, NJ / Union
22	Mary Munoz	Sr.	5-5	D	Barnegat, NJ / Southern Regional
23	Jennifer Kalczewski	Jr.	5-4	MF	Woodbury, NJ / Gloucester Catholic
24	Catherine Andrus	Fr.	5-7	D	Monroe Township, NJ / Bishop George Ahr

### ALPHABETICAL

No.	Name	Yr.	Ht.	Pos.	Hometown/High School
24	Catherine Andrus	Fr.	5-7	D	Monroe Township, NJ / Bishop George Ahr
13	Camille Billing	Fr.	5-6	F	Tecumseh, Ontario / St. Anne Catholic
2	Michelle Borth	Sr.	5-10	D	Tacoma, WA / Thomas Jefferson HS, Federal Way
6	Amanda Dotten	So.	5-7	MF	Anchorage, AK / Service
4	Meryl Hershfield	So.	5-4	MF	Vancouver, British Columbia, Canada / Jess Schwartz College Prep (Phoenix, AZ)
9	Kyrsten Howell-Harries	Sr.	5-2	CM	London, ON / AB Lucas Secondary
23	Jennifer Kalczewski	Jr.	5-4	MF	Woodbury, NJ / Gloucester Catholic
0	Anna Kornmuller	Fr.	5-6	GK	London, Ontario / AB Lucas Secondary School
7	Christina LaBellarte	Jr.	5-1	D	Rahway, NJ / Rahway
16	Piper Lunan	Jr.	5-7	MF	Calgary, Alberta, Canada / Henry Wise Wood
00	Sadie Mele	Sr.	5-4	GK	Rio Rancho, NM / Rio Rancho
15	Erin Morris	So.	5-10	MF	Potomac, MD / Thomas S. Wooton (Rockville, MD)
22	Mary Munoz	Sr.	5-5	D	Barnegat, NJ / Southern Regional
14	Casey Parisi	Fr.	5-5	CM	Santa Rosa, CA / Montgomery
10	Cielianna Pasiciel	Jr.	5-9	D	Hamet, CA / San Jacinto
1	Caity Ragni	Jr.	5-10	GK	Mechanicsburg, PA / Trinity
17	Amanda Redden	Fr.	5-4	CM	Hamilton, NJ / Steinert
18	Melanie Rodrigues	Fr.	5-3	MF	Warren, NJ / Watchung Hills Regional
12	Erin Schmitt	Fr.	5-4	D	Ramsey, NJ / Ramsey
8	Christi Taylor	Sr.	5-6	MF	Hackensack, NJ / Hawthorne Christian Academy
3	Rebecca Tustin	Fr.	5-7	F	Haddon Heights, NJ / Haddon Heights
21	Gechi Ukaegbu	So.	5-3	F	Union, NJ / Union
20	Kori Washington	Sr.	5-8	F	Ewing, NJ / The Pennington School, Pennington, NJ



# 2009 STATISTICS AND RESULTS

## All games

RECORD:	OVERALL	HOME	AWAY	NEUTRAL
ALL GAMES	7-9-2	5-4-1	2-5-1	0-0
CONFERENCE	4-1-1	3-0	1-1-1	0-0
NON-CONFERENCE	3-8-1	2-4-1	1-4	0-0

Date	Opponent	Score	Att.	#	Player	gp	g	a	pts	sh	sh%	sog	sog%	gw	pk-att
Aug 28	at Army	L 0-3	200	20	Kori Washington	18	4	2	10	22	.182	17	.773	1	0-0
Aug 30	at Canisius	L 0-1	150	21	Gechi Ukaegbu	17	3	2	8	26	.115	14	.538	1	0-0
Sep 04	DREXEL	Wo2 2-1	700	16	Piper Lunan	16	3	2	8	19	.158	7	.368	0	0-0
Sep 11	SAINT PETER'S	L 0-1	400	6	Amanda Dotten	18	2	3	7	48	.042	23	.479	2	0-0
Sep 13	RIDER	W 2-0	400	2	Michelle Borth	12	3	0	6	8	.375	4	.500	0	2-2
Sep 18	MOUNT ST. MARY'S	To2 1-1	309	15	Erin Morris	12	2	1	5	9	.222	5	.556	0	0-0
Sep 20	at Bryant	W 3-2	208	7	Mariam Bestawros	18	1	1	3	27	.037	8	.296	1	0-0
Sep 25	LAFAYETTE	L 0-1	303	8	Christi Taylor	18	1	1	3	22	.045	8	.364	1	0-0
Sep 28	IONA	Lot 1-2	321	14	Briana Morales	15	1	1	3	15	.067	7	.467	0	0-0
* Oct 02	SOUTH CAROLINA STATE	W 2-1	419	3	Chacha Naito	18	1	0	2	9	.111	4	.444	1	0-0
* Oct 04	at Howard	To2 1-1	166	5	Millie Motta	9	1	0	2	2	.500	2	1.000	0	0-0
* Oct 09	at South Carolina State	L 0-1	174	4	Meryl Hershfield	18	0	2	2	7	.000	2	.286	0	0-0
* Oct 18	DELAWARE STATE	W 2-0	200	10	Cielianna Pasiciel	16	0	0	0	8	.000	2	.250	0	0-0
* Oct 23	at Delaware State	W 5-2	0	22	Jennifer Kalczewski	2	0	0	0	2	.000	1	.500	0	0-0
* Oct 25	HOWARD	W 2-0	300	22	Mary Munoz	17	0	0	0	1	.000	0	.000	0	0-0
10/30/09	at WAGNER	L 0-3	197	9	K. Howell-Harries	3	0	0	0	1	.000	1	1.000	0	0-0
Nov 01	at Longwood	L 1-2	225	11	Melissa Paul	5	0	0	0	0	.000	0	.000	0	0-0
Nov 06	NORTH DAKOTA	L 1-3	450	00	Sadie Mele	18	0	0	0	0	.000	0	.000	0	0-0
Total						18	23	15	61	226	.102	106	.469	7	2-2
Opponents						18	25	20	70	233	.107	109	.468	9	0-2

### TEAM STATISTICS

	NJIT	OPP
SHOT STATISTICS		
Goals-Shot attempts	23-226	25-233
Goals scored per game	1.28	1.39
Shot pct.	.102	.107
Shots on goal-Attempts	106-226	109-233
SOG pct.	.469	.468
Shots/Game	12.6	12.9
CORNER KICKS	51	80
PENALTY KICKS	2-2	0-2
PENALTIES		
Yellow cards	14	16
Red cards	1	1
ATTENDANCE		
Total	3802	1320
Dates/Avg Per Date	10/380	8/165
Neutral Site #/Avg	0/0	

#	Goalie	GP	Min.	GA	GAAvg	Saves	Pct	W-L-T	Sho
00	Sadie Mele	18	1684:33	25	1.34	84	.771	7-9-2	3
	Total	18	1684:33	25	1.34	84	.771	7-9-2	3
	Opponents	18	1684:33	23	1.23	83	.783	8-6-2	5

Goals by Period	1st	2nd	OT	OT2	Total
NJIT	9	13	0	1	23
Opponents	10	14	1	0	25

Shots by Period	1st	2nd	OT	OT2	Total
NJIT	113	101	7	5	226
Opponents	103	113	10	7	233

Saves by Period	1st	2nd	OT	OT2	Total
NJIT	37	36	7	4	84
Opponents	44	35	1	3	83

Corners by Period	1st	2nd	OT	OT2	Total
NJIT	22	29	0	0	51
Opponents	42	35	2	1	80

Fouls by Period	1st	2nd	OT	OT2	Total
NJIT	84	89	4	7	184
Opponents	72	79	3	0	154



Gechi Ukaegbu





## Newark: The Renaissance City

NJIT is located in the heart of New Jersey's largest city, Newark, with a population of over 300,000, making it the 65th-largest city in the United States. A major urban center, Newark is a city on the move.

Attractions in Newark include:

- The Prudential Center, a major indoor entertainment and sports venue housing New Jersey Devils hockey, New Jersey Nets basketball, major concerts and other premier events
- New Jersey Performing Arts Center
- The Newark Museum
- The Newark Public Library
- Symphony Hall
- Branch Brook Park
- Art galleries, restaurants, shopping
- The Ironbound neighborhood, renowned for its dining and vibrant nightlife
- An urban architectural laboratory
- Professional minor league baseball (Newark Bears)



## Newark: New Jersey's College Town

Some 30,000 undergraduate, graduate, and professional students attend classes in the University Heights section, which is home to NJIT, Rutgers-Newark, the University of Medicine and Dentistry of New Jersey (UMDNJ), and Essex County College.

Adjacent to NJIT to the east, is the Newark campus of Rutgers University and the two schools enjoy an exceptionally close and productive relationship. NJIT and Rutgers students have library privileges at both campuses. NJIT students may also enrich their educational experience by enrolling in Rutgers-Newark courses and in full degree programs in disciplines not offered by NJIT, such as art, music, geology, and psychology.

Each year, the two universities co-sponsor a common season of theatrical productions, as well as 'World Week', a joint program of honors colloquia, and a variety of other cultural and social activities.

NJIT also enjoys a cooperative relationship with its neighbor to the west in the University Heights area, UMDNJ, with several joint degree programs.

## New Jersey/New York Metropolitan Region

NJIT and Newark are a part of a region that is a magnet not only to the rest of the United States, but also to the world.

In Newark and neighboring northern New Jersey alone, attractions such as the Prudential Center, New Jersey Performing Arts Center, Meadowlands Sports Complex, Red Bull Arena, Liberty Science Center, and numerous others are minutes away by car and in most cases accessible by public transportation. Literally dozens of shopping malls are within a 20-minute drive of Newark, as well.

Midtown Manhattan, with all that it and the rest of New York City offer, is less than 15 miles from the NJIT campus.

NJIT students have regular access to discount tickets for Broadway shows, museums, concerts, and sporting events.

The school also sponsors weekend trips throughout the northeastern United States, with activities such as skiing, boating, swimming, hiking, and more.

The spectacular Jersey shore is less than an hour away by car and winter sports are within a couple of hours drive to the west and north.





NJIT, with its campus in Newark, NJ, sits in a region that abounds with major professional sports unlike any other in the United States and perhaps in the world. There are nine teams in the major professional leagues (MLB, NFL, NBA, and NHL) located in New York City, northern New Jersey and Long Island.

Only one of nine major teams is more than 25 miles from Newark, but most, including the New Meadowlands Stadium (Giants and Jets NFL football), Madison Square Garden (NBA Knicks, NHL Rangers), are much closer.

The three closest professional sports venues (listed below) are within three miles of NJIT's campus and can be accessed in a matter of minutes at low cost by public transportation, beginning with Newark Light Rail, from campus.

### Prudential Center

The home of the National Hockey League New Jersey Devils and the New Jersey Nets of the National Basketball Association is in downtown Newark at the corner of Mulberry and Edison streets, about one mile from the NJIT's University Heights campus.

#### *Prudential Center*



*Red Bull Arena*

Opened in October 2007, 'The Rock' is the centerpiece of the city's Downtown Core Redevelopment Project. In addition to NHL hockey and NBA basketball, it has hosted numerous entertainment and sporting events, including NJIT basketball.

NJIT played basketball in the Rock in the inaugural year and in each year since. Indeed, NJIT hosted the first women's basketball game ever played in the Prudential Center on January 15, 2008 (NJIT vs. Cornell).

The arena, with full-capacity seating for 18,500 spectators, features a 4,800 square-foot exterior LED screen, as well as the latest in ice-surface technology and a gourmet restaurant overlooking the ice for Devils games. The building contains 850,000 square feet of space, 9,000 tons of steel, eight million pounds of structural steel and 25,000 cubic yards of concrete.



*Bears and Eagles Riverfront Stadium*

### Red Bull Arena

Located in Harrison, NJ, just across the Passaic River from Newark and less than three miles from the NJIT campus, the new home of the New York Red Bulls (opened in March 2010) sets the standard for soccer venues across North America.

The state-of-the-art soccer-specific facility is a major component of a multi-billion dollar development.

Red Bull Arena has a number of key design elements which give its seating bowl a close-to-the-action feeling and the unique stadium roof design extends from its leading edge over the entire seating bowl and then curve down to the concourse.

The overall seating capacity for soccer is 25,000, including 30 luxury suites (20 lower level and 10 upper level) and 1,116 club seats. Other amenities include three stadium clubs and two retail outlets.

### Bears and Eagles Riverfront Stadium

Bears and Eagles Riverfront Stadium, the \$30 million state-of-the-art home of the professional baseball Newark Bears and since 2004 the home of NJIT Highlanders baseball, officially opened to the public on July 16, 1999. With a seating capacity of 6,200, "The Den" affords fans an up-close view of the action. The ballpark also has 20 luxury suites, a picnic area, a party deck, a concert stage situated behind the outfield wall and a major league-caliber press box.

In December 2005, NJIT and the Bears held a joint press conference to herald a new partnership that includes a 10-year deal that extends Bears and Eagles Riverfront Stadium as the home of NJIT Highlanders baseball.



The New Jersey Institute of Technology teams play home games and practice in a combination of facilities on-campus and off.

The on-campus facilities include Lubetkin Field at J. Malcolm Simon Stadium for outdoor sports and the Estelle and Zoom Fleisher Athletic Center for indoor sports. In addition, NJIT is constructing the Naimoli Family Athletic and Recreational Facility, a multi-purpose indoor facility on the site of the former outdoor tennis courts.

Off-campus venues include Bears and Eagles Riverfront Stadium, a professional minor league stadium that is the home of NJIT baseball; the Prudential Center, home of the NHL Devils and NBA Nets, which has hosted selected NJIT basketball games; and, Branch Brook Park in Newark and Van Cortlandt Park in the Bronx, home sites for NJIT cross country. All except for Van Cortlandt Park are less than two miles from the NJIT campus.

## Lubetkin Field at J. Malcolm Simon Stadium

The men's and women's soccer teams play their home games and practice on campus at Lubetkin Field at J. Malcolm Simon Stadium, a first-class venue for college soccer.

The field on the west end of NJIT's University Heights campus, is an all-weather facility, with 24/7 availability for competition or practice. Outfitted with SprinTurf artificial grass in the summer of 2004, Lubetkin Field also includes lighting for night contests, bleacher seating for more than 1,000 spectators, a press box and scoreboard.

The fully-enclosed facility, with its entrance a few feet opposite the entrance of the indoor Estelle and Zoom Fleisher Athletic Center, can take its place

alongside any college soccer facility in the Northeast.

The home of Highlanders soccer served as the host site for the first-ever Great West Conference women's soccer championship tournament in November 2009. Previously, NJIT hosted the three-day 2005 ECAC Division II women's soccer championship tournament.

In the fall of 2005, when the Northeast was hit with record rainfall, games went on without a hitch at Lubetkin Field, thanks to the quality of the surface. Indeed, with the rain disrupting schedules around the region, some crucial Big East contests involving Seton Hall were moved to Lubetkin Field. Those games, too, went off without a hitch.

## Estelle and Zoom Fleisher Athletic Center

The NJIT men's and women's basketball teams and men's and women's volleyball teams play their home games in the Fleisher Athletic Center gymnasium, while the swimming team competes and practices in building's pool. The Fleisher Center also houses intercollegiate fencing, as well as all athletic department offices, varsity and general weight and fitness rooms, and the athletic training room.

In the summer of 2006, the gym underwent renovation to include installation of a new floor and baskets, new lighting, new sound system and new scoreboards, along with entirely new seating



A six-lane swimming pool in Fleisher Athletic Center is home to the NJIT swimming team. Fencing has its own area on the second floor of the building.

In addition to all athletic department offices, the Fleisher Athletic Center also houses the sports medicine staff in the Athletic Training Room and the varsity weight room, supervised by the head strength and condition coach. The building's third floor is home to a fitness center, which is open for use by all students and staff.

## The Naimoli Family Athletic and Recreation Facility

Scheduled to open in 2011, the facility, under construction, will be approximately 25,600 square feet. The Naimoli Family Center will be a multi-purpose space for athletics, community recreation, and gatherings involving large numbers of people.

Built on top of the old outdoor tennis courts adjoining the Fleisher Athletic Center, construction of this new building has been made possible, in part, by a generous gift from Vincent Naimoli '62, Chairman and CEO of Anchor Industries International and Chairman Emeritus/ Founder of the Tampa Bay Rays major league baseball team..

The facility will house courts for tennis, and will be made available for other athletic and recreational activities, including practice for basketball and volleyball. It will be heated and air conditioned, with flooring appropriate for the intended athletics and recreational activities.



for approximately 1,500 spectators after the first phase of renovation. The back bay 'C gym' can be sectioned off from the main competition floor, making the facility useful for intramurals, physical education classes and campus recreation time, while being able to host multiple simultaneous events.



## Bears and Eagles Riverfront Stadium: Home of the NJIT Highlanders

Joe Torre, then the manager of the New York Yankees, visited New Jersey Institute of Technology on December 8, 2005 to herald a new partnership between NJIT's baseball team, the Highlanders, and the Newark Bears.

Torre, a friend of the Bears and of college baseball, was on hand as the Highlanders signed a 10-year contract to play their home games at Bears & Eagles Riverfront Stadium in Newark.

"I think this partnership is nothing but aces," Torre said during a press conference at NJIT. "It's a partnership between two class organizations that will make for nothing but a lot of fun for everyone."

For the previous two years, the Highlanders played their home games at the stadium. But the team's longer-term commitment to play at the stadium came as NJIT elevated its baseball program to Division I.

"NJIT is bringing Division I baseball to this great stadium," said NJIT President Robert A. Altenkirch, "which will generate the highest level of excitement. It's a great partnership that allows NJIT to play intercollegiate baseball in a great facility, maybe the best for college baseball in the country."

Bears and Eagles Riverfront Stadium, the \$30 million state-of-the-art home of the Newark Bears, officially opened to the public on July 16, 1999.

With a seating capacity of 6,200 Bears and Eagles Riverfront Stadiums affords everyone in attendance an up-close view of the action. The ballpark also has 20 luxury suites, a picnic area, a party deck, a concert stage situated behind the outfield wall and a major league-caliber press box featuring two radio booths and two television booths.



The name, Bears and Eagles Riverfront Stadium, honors Newark's rich baseball history. The original Bears were a farm team for the New York Yankees up until 1949 and the Eagles were a very successful Negro League team that played in Newark until 1950.

### Prudential Center

In October 2007, the Prudential Center ushered in a new era in sports and entertainment in Newark and the entire northern New Jersey area.

Prudential Center is the cornerstone in the revitalization and renaissance of downtown Newark. In addition to the arena, Newark will soon add scores of condominiums, restaurants, themed bars and mixed retail establishments. Prudential Center, one of the finest arenas in the country, is New Jersey's home for hockey, basketball, concerts and numerous other events.

A public/private partnership between the City of Newark and Devils Arena Entertainment made the \$375 million Prudential Center a reality that is changing the face of downtown Newark and making it a destination place for sports and live entertainment in the region.

"The Rock" is located about a mile from NJIT's University Heights campus and is known best as the home of the National Hockey League New Jersey Devils and now, the home of the National Basketball Association New Jersey Nets.

The arrival of the spectacular Prudential Center nearly coincides with NJIT's arrival as an NCAA Division I institution--the first in Newark and the newest in New

Jersey in more than 20 years. The Rock opened one year after NJIT began Division I competition as part of its NCAA reclassification which is now complete.

In the arena's inaugural year, NJIT played host to six basketball games on four dates, including four men's basketball games and two women's games. Included was the first women's basketball game in the building's history, when the Highlanders entertained Cornell on January 15, 2008.

The Highlanders have hosted additional basketball games each year of the building's existence and will play there again in 2010-11. Further, NJIT's club ice hockey team plays all of its home games in the full-size Devils practice rink facility (AmeriHealth Pavilion), which adjoins the main arena and has an 800-seat capacity. And one of the special events held in the main arena is NJIT's annual commencement.

### Branch Brook Park and Van Cortlandt Park

A hallmark of the NJIT cross country program under veteran coach Al Alonso is its ability to host cross country competition that have made Highlander-sponsored races a popular destination for school from throughout the New York/New Jersey area.

In 2009, NJIT hosted the Great West Conference championships at Van Cortlandt Park in the Bronx, and the course, which is home to some of the most prestigious events in the sport, is also the home venue for other annual NJIT-hosted races. Branch Brook Park, which is a public park of Essex County, reaches into several towns, including Newark, with the park entrance less than a mile from the NJIT campus.



## ALL-TIME RESULTS/ALL-TIME VS. OPPONENTS

**1996 (0-11)**

MT. ST. VINCENT	L	2-3
St. Joseph's (LI)+	L	
at Allentown	L	0-1
at Molloy	L	0-9
10/2 STEVENS TECH+	L	0-3
At Allentown (ot)	L	0-1
at St. Elizabeth	L	0-4
at FDU-Madison	L	0-3
at Centenary (NJ)	L	0-9
at Nyack	L	0-4
at Bloomfield	L	0-3

**\*WIAC +IAC**  
Coach: Dan Kilday

**1997 (0-13)**

9/2 at Nyack	L	0-11
9/6 at Adelphi*	L	0-14
9/14 at Albany	L	0-8
9/17 BRIDGEPORT	L	0-8
9/24 at Bloomfield	L	
9/30 PHILA. TEXTILE*	L	1-10
10/4 ST. ROSE*	L	0-5
10/11 SOUTHAMPTON*	L	
10/15 at St. Thomas Aquinas	L	
10/18 at Molloy*	L	0-12
10/24 C.W. POST*	L	0-5
10/26 at New York Tech*	L	0-16
11/1 at Concordia (NY)*	L	0-7

**\*NYAC (0-8)**  
Coach: Ralph Choonoo

**1998 (0-10)**

9/12 BLOOMFIELD	L	0-5
9/16 at C.W. Post*	L	0-13
9/20 ST. THOMAS AQUINAS	L	0-5
9/26 at St. Rose*	L	0-13
10/9 at Molloy*	L	0-8
10/14 NEW YORK TECH*	L	0-8
10/17 CONCORDIA (NY)*	L	0-4
10/21 ADELPHI*	L	fft.
10/24 at Southampton*	L	0-8
10/31 PHILA. TEXTILE*	L	0-14

**\*NYCAC (0-8) 16-10**  
Coach: Jean Pierre

**1999 (1-10)**

9/11 CALDWELL	L	1-8
9/13 at Molloy*	L	0-10
9/23 at Bloomfield	W	2-1
9/26 ST. ROSE*	L	0-12
9/29 at Queens (NY)*	L	0-6
10/9 at Concordia (NY)*	L	0-8
10/14 SOUTHAMPTON*	L	0-6
10/17 at Adelphi*	L	1-7
10/23 CW POST*	L	0-21
10/25 PHILADELPHIA*	L	1-13
10/31 at New York Tech*	L	0-9

**\*NYCAC (0-9)**  
Coach: Tom Romano

**2000 (3-13)**

9/11 QUEENS (NY)	L	0-5
9/13 TEIKYO POST*	L	0-6
9/16 at Concordia (NY)	L	1-3
9/18 at Bloomfield* (ot)	L	1-2
9/21 CONCORDIA (NY)	L	0-2
9/25 at Mercy	L	1-2
9/27 GEORGIAN CT.*	L	0-7
9/30 at Holy Family*	L	0-8
10/2 MT. ST. VINCENT	W	3-1
10/4 at Dominican (NY)*	L	0-7
10/7 WILMINGTON*(ot)	W	2-1
10/11 at Caldwell*	L	0-5
10/14 FELICIAN*	L	0-3
10/16 at Mt. St. Vincent	W	6-0
10/18 NYACK*	L	0-4
10/22 at Goldey-Beacom*	L	0-8

**\*CACC (1-9) 14-64**  
Coach: Tom Romano

**2001 (6-9)**

9/7 at Mt. St. Vincent	W	7-1
9/10 MERCY	L	0-5
9/17 PHILA. BIBLE	W	5-2
9/19 at Bloomfield *	W	2-0
9/22 at Teikyo Post *	L	0-8
9/26 at Nyack *	L	2-5
9/29 HOLY FAMILY *	L	0-7
10/1 CCONY	W	9-0
10/3 GOLDEY-BEACOM *	L	1-3
10/5 GEORGIAN COURT *	L	1-2
10/10 at Dominican (NY) *	L	0-8
10/15 ST. ELIZABETH	W	8-0
10/20 at Wilmington (DE) *	L	2-7
10/22 MT. ST. VINCENT	W	6-0
10/25 FELICIAN *	L	0-7

**\*CACC (1-8) 43-55**  
Coach: Tom Romano



Erin Morris

**2002 (4-13)**

8/31 at Saint Rose	L	0-8
9/1 vs. Green Mountain	L	0-6
9/7 at New Jersey City	W	3-0
9/11 at Queens (NY)	L	0-2
9/14 at Felician*	L	0-5
9/18 BLOOMFIELD* (ot)	W	3-2
9/21 TEIKYO POST*	L	1-5
10/5 at Georgian Court*	L	1-3
10/7 at Mt. St. Vincent	L	2-4
10/9 DOMNICAN (NY)*	L	0-7
10/14 at Goldey-Beacom*	L	0-8
10/19 WILMINGTON (DE)*	L	0-6
10/21 ST. ELIZABETH	W	3-0
10/23 PURCHASE	W	2-0
10/27 at Holy Family*	L	1-5
10/30 NYACK*	L	2-3
11/1 at Caldwell*	L	0-3

**\*CACC (1-9) 18-68**  
Coach: Tom Romano

**2003 (5-12-1)**

9/6 NEW JERSEY CTY (2ot)	T	1-1
9/8 at Mercy	L	1-3
9/10 QUEENS (NY)	L	0-6
9/17 at Bloomfield*	W	3-0
9/20 at Teikyo Post*	L	0-4
9/24 at Nyack*	L	0-5
9/27 HOLY FAMILY*	L	0-6
9/29 at Purchase	L	0-4
10/1 GOLDEY-BEACOM*	L	0-5
10/4 GEORGIAN COURT*	L	0-3
10/6 MT. ST. VINCENT	W	6-0
10/11 CALDWELL*	L	0-6
10/13 FELICIAN*	L	1-5
10/17 at Delaware State	W	5-1
10/18 at Wilmington (DE)*	L	0-8
10/20 at St. Elizabeth (2ot)	W	2-1
10/24 at Dominican (NY)*	L	0-5
10/25 PHILA. BIBLICAL	W	2-0

**\*CACC (1-9) 20-62**  
Coach: Tom Romano

**2004 (5-10-1)**

8/29 ST. ANSELM COLLEGE	L	0-8
9/4 NYIT	L	0-3
9/8 at Felician*	L	2-3
9/11 at Georgian Court	T	0-0
9/15 BLOOMFIELD*	W	1-0
9/25 at Holy Family*	L	0-5
9/27 TEIKYO POST*	W	1-0
9/29 at Golden Beacom*	L	0-3
10/6 DOMINICAN (NY)*	L	0-2
10/9 at Caldwell*	L	0-2
10/13 at NJCU	W	5-1
10/16 MERCY	W	1-0
10/17 COLLEGE OF ST. ROSE	L	0-1
10/20 WILMINGTON (DE)*	L	0-4
10/23 NYACK* (NJIT DAY)	L	1-2
10/31 PURCHASE	W	4-1

**\*CACC (2-7)**  
Coach: Alyssa Radu

**2005 (8-6-3)**

8/26 at Drexel	L	0-6
9/4 ST. ANSELM	L	0-5
9/7 FELICIAN*	W	3-0
9/10 at NYIT	L (ot)	1-2
9/14 BLOOMFIELD*	W	2-0
9/17 at Post*	T (2ot)	0-0
9/21 at Nyack*	W	1-0
9/24 HOLY FAMILY*	L	0-2

10/1 GEORGIAN COURT*	W	3-0
10/5 at Dominican*	W	1-0
10/8 CALDWELL*	T (2ot)	1-1
10/15 DELAWARE STATE	W	3-1
10/19 at Wilmington*	W	1-0
10/23 at Saint Rose	L	0-5
10/27 PHILADELPHIA*	L	0-2
11/9 vs Philadelphia#	T (2ot)	1-1

**\*CACC (7-2-2)**  
**#ECAC Division II Tournament**  
Coach: Alyssa Radu

**2006 (1-13-1)**

8/25 MARSHALL	L	1-10
8/31 at IPFW	L	0-6
9/1 vs. Utah Valley State	L	0-6
9/8 MANHATTAN	L	0-3
9/13 at Iona	L	0-7
9/15 vs. Siena	L	0-6
9/17 at Albany	L	1-6
9/19 at Drexel	L	0-2
9/24 at UNC-Charlotte	L	0-5
10/1 at Howard	W	3-1
10/4 at Quinnipiac	L	0-4
10/14 NYIT	L	1-2
10/19 MONMOUTH	L	0-3
10/21 at St. Peter's	T (2ot)	0-0
10/30 NORTH DAKOTA STATE	L	0-7

Coach: Alyssa Radu

**2007 (4-14-1)**

9/2 at LIU	L	0-1
9/7 ALBANY	L (ot)	1-2
9/9 QUINNIPAC	L	1-1
9/15 IONA	L	0-1
9/19 DREXEL	L	0-1
9/22 at Longwood*	L	0-1
9/25 at Binghamton	L	1-3
9/28 at Monmouth	L	0-5
9/30 at Wagner	L	1-2
10/5 at LaSalle	L	0-4
10/7 at Navy	L	0-3
10/14 at North Dakota State	L	1-3
10/19 at Utah Valley*	L	0-5
10/24 HOWARD*	W	5-1
10/26 at Delaware State*	W	2-0
11/2 SO. CAROLINA STATE*	T	1-1
11/4 SAINT PETER'S	W	2-0
11/7 vs. South Carolina State^	W	4-0
11/9 at Utah Valley^	L	0-3

**\*USC (2-2-1) ^USC Tournament**  
Coach: Alyssa Radu

**2008 (2-16-1)**

8/26 at Army	L	1-3
8/29 at Saint Peter's	L	0-1
8/31 BINGHAMTON	L	0-2
9/5 CANISIUS	L	0-3
9/7 at Drexel	L	0-3
9/10 WAGNER	W	4-2
9/12 MONMOUTH	L	0-7
9/17 at Mount St. Mary's	L	2-5
9/18 at La Salle	L	0-3
9/21 at Quinnipiac	L	0-6
9/26 at Lafayette	L	0-2
9/28 at Iona	L	1-2
10/5 at South Carolina State*	W	2-0
10/8 UTAH VALLEY*	L	1-2
10/11 LONGWOOD*	T (2ot)	0-0
10/17 DELAWARE STATE*	L	0-1
10/19 BRYANT	L	1-3
10/26 at Howard*	L	0-1
11/1 at Utah Valley^	L	0-4

**\*USC (1-3-1) ^USC Tournament**  
Coach: Kevin Leacock

**2009 (7-9-2)**

8/28 at Army	L	0-3
8/30 at Canisius	L	0-1
9/4 DREXEL	W	2-1
9/11 SAINT PETER'S	L	0-1
9/13 RIDER	W	2-1
9/18 MOUNT ST. MARY'S	T	1-1
9/20 at Bryant	W	3-2
9/25 LAFAYETTE	L	0-1
9/28 IONA	L	1-2
10/2 SO. CAROLINA STATE*	W	2-0
10/4 at Howard*	T	1-1
10/9 at So. Carolina State*	L	0-1
10/18 DELAWARE STATE*	W	2-0
10/23 at Delaware State*	W	5-2
10/25 HOWARD*	W	2-0
10/30 at Wagner	L	0-3
11/1 at Longwood*	L	1-2
11/6 NORTH DAKOTA^	L	1-3

**\*GWC (5-2-1) ^ GWC Quarterfinals**  
Coach: Kevin Leacock

### ALL TIME RECORDS VS. OPPONENTS

Adelphi	0-3
Albany (NY)	0-2
Allentown	0-2
Army	0-2
Binghamton	0-2
Bloomfield	0-6
Bridgeport	0-1
Bryant	1-1
Caldwell	0-5-1
Canisius	0-1
Centenary (NJ)	0-1
CCNY	1-0
Concordia (NY)	0-5
C.W. Post	0-3
Delaware State	5-1
Dominican (NY)	0-5
Drexel	1-3
FDU-Madison	0-1
Felician	1-5
Georgian Court	0-4-1
Goldey-Beacom	0-5
Green Mountain	0-1
Holy Family	0-6
Howard	3-1-1
Iona	0-4
IPFW	0-1
Lafayette	0-2
LaSalle	0-2
Lehigh	0-0
Long Island	0-1
Longwood	0-2-1
Marshall	0-1
Manhattan	0-1
Mercy	1-3
Molloy	0-4
Monmouth	0-3
Mount St. Mary's	0-1-1
Mount St. Vincent	5-2
Navy	0-1
North Dakota	0-1
North Dakota State	0-2
NYIT	0-4
New Jersey City	2-0-1
Nyack	0-7
Philadelphia	0-3
Philadelphia Biblical	2-0
Philadelphia Textile	0-2
Post (CT)	1-4
Purchase	2-1
Queens (NY)	0-4
Quinnipiac	0-3
Rider	1-0
Siena	0-1
South Carolina State	3-1-1
Saint Peter's	1-3
St. Anselm	0-1
St. Elizabeth	3-1
Saint Joseph's	0-0
St. Joseph's-Patchogue	0-1
St. Rose	0-5
St. Thomas Aquinas	0-2
Southampton	0-3
Stevens	0-1
UNC-Charlotte	0-1
Utah Valley	0-5
Wagner	1-2
Wilmington (DE)	1-4

2010 opponents in bold

Cielianna Pasciel





# SCHOOL RECORDS

## Most Games—Career

72	Erika Taugher	2004-08
65	Erin Salgado	2002-05
62	Amanda Bayiokos	2004-07
	Briana Morales	2005-09
60	Katie DeRosa	2005-08
59	Jennifer Herrera	2000, 2002-04
57	Sara Buchala	2001-04
56	Sadie Mele	2007-pres.
	Christi Taylor	2007-pres.
	Kori Washington	2007-pres.

## Most Games—Season

19	6 tied	2008
	6 tied	2007

## Most Goals—Career

16	Erika Taugher	2004-08
	Cathy Wasko	2001
	Erin Salgado	2002-05
12	Kori Washington	2007-pres.
	Karina Merchan	2001-02
9	Jillian Misiunas	2002-04
8	Daisy Calderon	2000-01, 03
	Valerie DeAngelis	2000
7	Anna Tomczak	1999-2001
	Mary Caron	1998-99

## Most Goals—Season

13	Cathy Wasko	2001
12	Karina Merchan	2001
8	Vallerie DeAngelis	2000
6	Erika Taugher	2004
	Erika Taugher	2005
5	Erin Salgado	2002
	Daisy Calderon	2001
	Anna Tomczak	2001
	Kori Washington	2007

## Most Goals—Game

5	- Cathy Wasko vs. Mt. St. Vincent, 9/7/01
4	- Karina Merchan vs. St. Elizabeth, 10/15/01

## Most Assists—Career

15	Erika Taugher	2004-08
10	Jayna Misiunas	2002-04
	Karina Merchan	2001-02
9	Cathy Wasko	2001
8	Anna Tomczak	1999-2001
7	Jillian Misiunas	2002-04
	Sarah Buchala	2001-04
	Erin Salgado	2002-05
4	Linda Flores	2000-01
	Emma Vinski	2005-08
3	5 tied	

## Most Assists—Season

9	Cathy Wasko	2001
7	Karina Merchan	2001
6	Jayna Misiunas	2003
5	Erika Taugher	2004
	Sarah Buchala	2001

## Most Assists—Game

4	- Cathy Wasko vs. Mt. St. Vincent, 9/7/01
3	- Erika Taugher vs. Wagner, 9/10/08



Kori Washington

## Most Points—Career

47	Erika Taugher	2004-08
35	Cathy Wasko	2001
34	Karina Merchan	2001-02
33	Erin Salgado	2002-05
28	Kori Washington	2007-pres.
27	Jillian Misiunas	2002-04
22	Anna Tomczak	1999-2001
19	Vallerie DeAngelis	2000
17	Sarah Buchala	2001-04
16	Jayna Misiunas	2002-04
	Emma Vinski	2005-08

## Most Points—Season

35	Cathy Wasko	2001
31	Karina Merchan	2001
19	Vallerie DeAngelis	2000
17	Erika Taugher	2004
15	Erika Taugher	2005
13	Daisy Calderon	2001
	Anna Tomczak	2001
12	Kori Washington	2007
11	Erin Salgado	2002
	Jessi Wilkinson	2001

## Most Points—Game

10	- Cathy Wasko vs. Mt. St. Vincent, 9/7/01
8	- Karina Merchan vs. St. Elizabeth, 10/15/01

## Most Shots—Season

64	Cathy Wasko	2001
----	-------------	------

## Most Shots—Game

15	- Erin Salgado vs. Mt. St. Vincent, 10/17/02
----	--

## Most Games as Goalkeeper—Career

56	Sadie Mele	2007-pres.
38	Daisy Calderon	2000-01, 03

## Most Solo Shutouts—Season

7	Bruna Lotufo	2005
3	Sadie Mele	2009
	Sadie Mele	2007

## Most Saves—Career

347	Sadie Mele	2007-pres.
296	Daisy Calderon	2000-01, 03

## Most Saves—Season

167	Daisy Calderon	2000
155	Kate Crowley	1999
152	Kate Duncan	2002
140	Sadie Mele	2008

## Most Saves—Game

Ketsia Mesidor vs. Bridgeport, 9/17/97

## Most Goalkeeper Wins—Career

13	Sadie Mele	2007-pres.
10	Daisy Calderon	2000-01, 03
9	Bruna Lotufo	2005-06

## Most Goalkeeper Wins—Season

8	Bruna Lotufo	2005
7	Sadie Mele	2009

## MISCELLANEOUS INDIVIDUAL RECORDS

### Most Hat Tricks, Career:

2, Cathy Wasko, 2001

### Most Hat Tricks, Season:

2, Cathy Wasko, 2001

### Most Game Winning Goals, Career:

3, Cathy Wasko, 2001 & Erika Taugher, 2004

### Most Game Winning Goals, Season:

3, Cathy Wasko, 2001 & Erika Taugher, 2004

### Fastest Two Goals:

1:23, Dinah Kotei at New Jersey City, 9/7/02

### Fastest Three Goals:

12:20, Cathy Wasko vs. CCNY, 10/1/01

### Longest Goal-Scoring Streak:

3, Cathy Wasko, 2001 & Jessi Wilkinson, 2001

### Longest Point-Scoring Streak:

3, five times

## TEAM RECORDS

**Most Victories:** 8, 2005

**Fewest Losses:** 6, 2005

**Most Ties:** 3, 2005

**Best Winning Percentage:** .559, 2005

### Most Consecutive Victories:

3, Oct. 18 to Oct. 25, 2009; Sept. 28 to Oct. 5, 2005

### Most Shutouts:

12, 2008

### Most Consecutive Shutouts:

3, 2005 (9/10-9/21)

### Most Goals, Game:

50 vs. Mount St. Vincent, 10/6/04

### Most Goals, Season:

43, 2001

### Fewest Goals Allowed, Season:

25, 2009

### Fastest Two Goals:

0:47 at Delaware State

10/17/03 (Erin Salgado, Maura Finn)

### Fastest Three Goals:

5:23 vs. CCNY

10/1/01 (Cathy Wasko 2, Karina Merchan)

### Fastest Goal from Start of Game:

3:15 vs. Mercy, 9/8/03 (Maura Finn)





## DIVISION I RECORDS

<b>Most Games—Career</b>		3	6 tied	69	Angelica Sepulveda	2006
56	Sadie Mele	2007-pres.				
	Christi Taylor	2007-pres.				
	Kori Washington	2007-pres.	7	<b>Most Assists—Career</b>		
51	Mary Munoz	2007-pres.	4	Erika Taugher	2006-2008	
45	Briana Morales	2006-2009		Kori Washington	2007-pres.	
39	Erika Taugher	2006-2008		Emma Vinski	2006-2008	
38	Emma Vinski	2006-2008				
	Michelle Borth	2007-pres.	4	<b>Most Assists—Season</b>		
35	Cielianna Pasiciel	2008-pres.	3	Erika Taugher	2008	
	Piper Lunan	2008-pres.	3	Amanda Dotten	2009	
33	Dena Baskous	2006, 2007	3	Emma Vinski	2008	
				Erika Taugher	2007	
	<b>Most Games—Season</b>			<b>Most Points—Career</b>		
19	Erika Taugher	2008	28	Kori Washington	2007-pres.	
	Emma Vinski	2008	15	Erika Taugher	2006-2008	
	Kori Washington	2008	14	Emma Vinski	2006-2008	
	C. Pasiciel-Chalmers	2008				
	Amanda Gannon	2008		<b>Most Points—Season</b>		
	Christy Taylor	2008	12	Kori Washington	2007	
	Sadie Mele	2008	10	Kori Washington	2009	
				Erika Taugher	2008	
	<b>Most Goals—Career</b>		8	Gechi Ukaegbu	2009	
8	Kori Washington	2007-pres.		Piper Lunan	2009	
4	Kori Washington	2009	7	Amanda Dotten	2009	
5	Emma Vinski	2006-2008		Emma Vinski	2008	
				Emma Vinski	2007	
	<b>Most Goals—Season</b>			<b>Most Saves—Career</b>		
5	Kori Washington	2007	347	Sadie Mele	2007-pres.	
4	Kori Washington	2009	83	Bruna Lotufo	2006	
				<b>Most Saves—Season</b>		
				140	Sadie Mele	2008
				123	Sadie Mele	2007
				84	Sadie Mele	2009
				70	Bruna Lotufo	2006
				69	Angelica Sepulveda	2006

## TEAM RECORDS

**Most Victories:** 7, 2009  
**Fewest Losses:** 9, 2009  
**Most Ties:** 2, 2009  
**Best Winning Percentage:**  
 (7-9-2), 2009  
**Most Consecutive Victories:**  
 3, Oct. 18 to Oct. 25, 2010  
**Most Shutouts:** 3, 2007, 2009  
**Most Consecutive Shutouts:** 2, 2007  
**Most Goals, Game:**  
 5, vs. Delaware State (Oct. 23, 2010); vs. Howard  
 (Oct. 24, 2007)  
**Most Goals, Season:** 23, 2009  
**Most Shots, Game:**  
 27, vs. South Carolina State (Nov. 7, 2007)  
**Most Shots, Season:** 226, 2009  
**Most Saves, Game:**  
 15, at IPFW (Aug. 31, 2006)  
**Most Saves, Season:** 143, 2006  
*(Division I competition began in 2006)*

## DIVISION I SUPERLATIVES

### NJIT

15 vs. Howard, (10.24.07)  
 5 vs. Howard, (10.24.07)  
 5 vs. Delaware State (10.23.09)

5 vs. Howard, (10.24.07)  
 5 vs. Wagner (9.10.08)  
 31 vs. South Carolina State (11.2.07)  
 20 vs. South Carolina State (11.2.07)  
 15 at IPFW (8.31.06)  
 8 vs. South Carolina State (11.2.07)  
 8 vs. Delaware State (10.18.09)  
 23 vs. South Carolina State (11.2.07)

### NJIT

5, Kori Washington vs. Howard (10.24.07)  
 2, Kori Washington vs. South Carolina State (11.7.07)  
 2, Gechi Ukaegbu at Delaware State (10.23.09)  
 3, Erika Taugher vs. Wagner (9.10.08)  
 8, Amanda Dotten vs. Howard (10.25.09)  
 4, three tied  
 14, Sadie Mele vs. vs. Army (8.26.08)

### TEAM

Points  
 Goals

Assists

Shots  
 Shots on Goal  
 Saves  
 Corner Kicks

Fouls

### Opponents

25, Iona, (10.3.06)  
 7, North Dakota State (10.30.06)  
 7, Iona (10.13.06)  
 7, Monmouth (10.12.08)  
 11, Iona, (10.13.06)  
 46, IPFW, (8.31.06)  
 21, IPFW, (8.31.06)  
 19, South Carolina State (11.2.07)  
 18, Drexel, (9.19.06)  
 17, South Carolina State (11.2.07)

### INDIVIDUALS

Points  
 Goals

Assists  
 Shots  
 Shots on Goal  
 Saves

## ALL - TIME ALL - CONFERENCE

### Women's Intercollegiate Athletic Conference

1996 Wendy Gruenewald,  
 Natalie Rodriguez, Maiysha Ware

### Independent Athletic Conference

1996 Natalie Rodriguez

### Great West Conference (East Division)

2009 Sadie Mele  
 2009 Cielianna Pasiciel  
 2009 Piper Lunan

### Great West Conference Defensive Player of the Year (East)

2009 Sadie Mele

### Great West Conference All-Academic Team

2009 Christi Taylor  
 2008 Erika Taugher  
 2008 Christi Taylor

### Central Atlantic Collegiate Conference

2005 Dena Baskous (1st)  
 2005 Brunna Lotufo (2nd)  
 2005 Erika Taugher (3rd)  
 2002 Erin Salgado (HM)  
 2000 Vallerie DeAngelis (HM)

### United Soccer Conference

2007 Dena Baskous (1st)  
 2007 Erika Taugher (2nd)  
 2007 Sadie Mele (3rd)  
 2007 Michelle Borth (3rd)  
 2007 Emma Vinski (3rd)  
 2007 Kori Washington (3rd)  
 2007 Xiomara Medina (3rd)

### NCSA Division II All-New England

2005 Dena Baskous (2nd)

### National Statistical Leader

2000 Daisy Calderon, saves per game



# ALL - TIME ROSTER

## A

ALVAREZ, Janina 97,98  
ARMSTRONG, Tama 96  
AUGUSTINE, Joann 96  
AWOKE, Hiywote 96,97,98,99

## B

BABUCHIWSKI, Dorothy 03  
BALLOU, Nicole 99  
BARRETO, Michelle 00,01  
BASKOUS, Dena 05, 06, 07  
BAYIOKOS, Amanda 04, 05, 06, 07  
BAYIOKOS, Cindy 05, 06  
BECKER, Melissa 97,98  
**BESTAWROS, Mariam 09**  
BHANDERI, Nilam 97,98,99  
**BORTH, Michelle 07, 08, 09**  
BUCHALA, Sarah 01,02,03,04

## C

CALDERON, Daisy 00,01,03  
CARON, Mary 98,99  
CHOY, Yvonne 96,97,98  
CLOVIS, Darlene 00  
COHEN, Krista 05, 06, 07  
CORREA, Claudia 03  
CROWLEY, Kate 99  
CUBIAS, Marina 96

## D

DeANGELIS, Vallerie 00  
DeROSA, Katie 05, 06, 07, 08  
DORN, Jennifer 00,01  
**DOTTEN, Amanda 09**  
DUNCAN, Kate 02,04

## E

ELLIOT, Laura 96,97

## F

FARROW, Ann 96  
FINN, Maura 03,04  
FLORES, Linda 00,01

## G

GANNON, Amanda 07, 08  
GO, Jean 02  
GOLDMAN, Alexis 97,98,99,00  
GOUGH, Heather 01  
GRIFFITHS, Nadia 97,98,99  
GRISWOLD, Kimberly 02  
GRUENEWALD, Wendy 96  
GUARDADO, Luisa 99  
GUISHARD, Corina 02

## H

HENRY, Margarette 96,97,98  
HEPFINGER, Katie 04, 05, 06, 07  
HERMAN, Susan 97,98  
HERNANDEZ, Heather 00  
HERRERA, Jennifer 00,02,03,04

## HERSHFIELD, Meryl 09

HIGGINS, Teresa 06  
HORDYNSKY, Natalie 01  
HOUSER, Leila 99,00  
HOWE, Rebecca 00  
**HOWELL-HARRIES, Kyrsten 07, 08, 09**

## I

INTASAMAKUL, Joy 01,02

## J

JOY-WAY, Alida 96,98

## K

**KALCZEWSKI, Jennifer 08, 09**  
KLING, Lisa 03  
KOTEL, Dinah 02

## L

LaBELLARTE, Chrissy 08  
LARGE, Katie 99  
LEIBEL, Katie 01  
LEICHTNAM, Elizabeth 02,03,04  
LEMARIE, Linda 97,98,99  
LOTUFO, Bruna 05, 06  
**LUNAN, Piper 08, 09**

## M

MACAULAY, Keri-Anne 04, 05  
MACIAS, Stephanie 04, 05, 07  
MAKLOUFI, Keltoum 99  
MARTINEZ, Dolores 00  
MAYFIELD, Tackia 00  
MEDINA, Xiomara 07  
**MELE, Sadie 07, 08, 09**  
MENDOZA, Monica 00  
MERCHAN, Karina 01,02  
MESIDOR, Ketsia 96,97,98  
MEVS, Carmina 99,00  
MISIUNAS, Jayna 02,03,04  
MISIUNAS, Jillian 02,03,04  
MORALES, Briana 05, 06, 07  
**MORRIS, Erin 09**  
**MOTTA, Millie 09**  
MOVING, Lisa 97,98  
**MUNOZ, Mary 07, 08, 09**

## N

NAITO, Chacha 09  
NOBLES, Chelsea 06

## O

OBAZENU, Veta 99  
O'CONNOR, Jackie 99  
OSSA, Ana 03  
O'DWYER, Aine 05, 07

## P

**PASICIEL-CHALMERS, Cieliana 08, 09**  
PATEL, Lali 98  
PATEL, Sushreeta 97  
**PAUL, Melissa 07, 09**

POSSIBLE, Vicki 96,97,98  
PHILLIPS, Marie 98,99  
POWDHAR, Joanna 05, 06

## R

**RAGNI, Caitlyn 08, 09**  
RAMIREZ, Magda 99  
RAPATSKI, Brandi 96  
REEBER, Lisa 99  
REYNOLDS, Leigh 04  
RIBELIN, Nettie 00,01  
RIVERA, Betty 99,00  
RIVIRIEGO, Sheila 99  
RODRIGUEZ, Natalie 96,97,98,99  
ROMANO, Mary Kate 02  
RUSCIANO, Sarah 07

## S

SALGADO, Erin 02,03,04, 05  
SAMUEL, Jaky 08  
SEPULVEDA, Angelica 05, 06, 07  
SIMEON, Verdane 96  
SMITH, Patricie 99  
SOLT, Karisa 01,02,03  
SOLU, Alyn 96,97,98  
STOLTZ, Heather 96

## T

TALAI, Mina 03  
TAUGHER, Erika 04, 05, 07, 08  
**TAYLOR, Christi 07, 08, 09**  
TOMCZAK, Anna 99,00,01  
TUDOR, Lauren 99  
TURNBULL, Breanna 06

## U

**UKAEGBU, Gechi, 09**

## V

VINSKI, Emma 05, 07, 08

## W

WALLACE, Leah 96,98,99  
WARE, Maiysha 96,97,98  
WASKO, Cathy 01  
**WASHINGTON, Kori 07, 08, 09**  
WHITWORTH, Elaine 01  
WHITWORTH, Elizabeth 01  
WIELAND, Rachel 96  
WILKINSON, Jessi 01  
WU, Peychi 97,98,99

## Z

ZAMBRANO, Claudia 97,98  
ZIEMBA, Melissa 96

Returning players in bold

Corrections welcome. Please contact Stephanie Pillari at [pillari@njit.edu](mailto:pillari@njit.edu)

# YEAR - BY - YEAR

YEAR	RECORD	CONFERENCE	MVP	CAPTAINS
1996	0-12	WIAC/IAC	Natalie Rodriguez	N/A
1997	0-13	NYCAC (0-8/9th)	Janina Alvarez	N/A
1998	1-10	NYCAC (0-8/9th)	Natalie Rodriguez	N/A
1999	1-10	NYCAC (0-9/10th)	Veta Obazenu	N/A
2000	3-13	CACC (1-9/T-10th)	Daisy Calderon	Ana Tomczak
2001	6-9	CACC (1-8/T-9th)	Cathy Wasko	Ana Tomczak
2002	4-13	CACC (1-9, 10th)	Erin Salgado	Sarah Buchala, Erin Salgado
2003	2-12-1	CACC (1-9, T-10th)	Lisa Kling	Sarah Buchala, Katie Duncan
2004	5-10-1	CACC (2-7)	Katie Hepfinger	Erin Salgado
2005	8-6-3	CACC (7-2-2)	Amanda Bayiokos	Erin Salgado
<i>Postseason: ECAC Quarterfinal</i>				
2006	1-13-1	Independent	Cynthia Bayiokos	Dena Baskous, Cynthia Bayiokos
2007	4-14-1	USC (2-2-1)	Dena Baskous	Dena Baskous
2008	2-16-1	USC (1-3-1)	Sadie Mele	Emma Vinski, Erika Taugher, Melissa Paul, Briana Morales
2009	7-9-2	GWC East (4-1-1/1st)	Sadie Mele	Game captains

Christi Taylor





# NJIT HALL OF FAME

Name	Grad. Year	Contribution	Sport (s)	Years Active	Year of Induction
BAKUN, Andrew I.	1982	Athlete/Asst. Coach	M-Soccer	1978-81/90-91	2005
BAKUN, Myron	1967	Athlete	M-Soccer	1964-66	1991
BARTH, Roland E.	1960	Athlete	M-Fencing	1957-59	2009
			M-Soccer	1956-59	
BAUDER, Fred "Coach"	--	Coach	M-Basketball	1932-61	1989
BLUM, Raymond E.	1950	Distinguished Alumnus	Speedskating/Cycling	--	1996
BORJA, Hernan "Chico"	1981	Athlete	M-Soccer	1977-80	1986
BORNAKO, Gregory "Egor"	1970	Athlete	M-Fencing	1966-70	1987
BOWSER, Hamilton V.	1952	Athlete	M-Fencing	1948-52	1989
BRADLEY, Thomas	1978	Athlete	M-Swimming	1974-78	1990
BROWN, Andrew D.	1963	Athlete	M-Soccer	1956-59	2006
CRIMMINS, David	1952	Athlete	M-Fencing	1948-52	2007
CRUZ, Edward	1963	Athlete	M-Soccer	1959-62	1995
DAWSON, Marilyn E.	1986	Athlete	WVB/WBKB/SB	1982-86	1991
DeNICOLA, Carmine P.	1978	Athlete	Baseball	1975-78	2005
DeNURE, Dave	--	Coach	M-Volleyball	1982-98	2009
			W-Volleyball	1986-90	
			W-Basketball	1987-88	
DeVITO, Louis	1960	Athlete	M-Soccer/M-Fencing	1956-60	1992
DIAS, Joe A.	1977	Athlete	M-Soccer	1973-76	1993
DRURY, Eugene M.	1963	Athlete	M-Tennis	1960-63	1988
ENG, Katherine	1993	Athlete	W-Volleyball	1989-92	2007
ETIENNE, Yves	1979	Athlete	M-Volleyball	1976-78	1990
FEHN, Gilbert F.	1940	Athlete	M-Basketball/M-Tennis	1936-40	1992
FITZGERALD, Joseph M.	--	Coach/Asst. Coach	M-Basketball	1961-66/52-61	1986
FLEISHER, Seymour "Zoom"	1951	Athlete	M-Basketball	1947-51	1992
GAGLIARDO, Salvatore A.	1985	Athlete	M-Basketball	1981-85	1995
GALLAGHER, Thomas G.	1985	Athlete	M-Basketball	1981-85	1991
GIOVANNOLI, Arnold L.	1953	Athlete	M-Basketball	1950-53	1993
GOLDRICK PITT, Elizabeth M.	1990	Athlete	WVB/SB/WBKB/WTen	1985-90	1995
GRAZIANO, Jean M.	1989	Athlete	Softball	1986-89	2009
GRUENEWALD, Wendy A.	1997	Athlete	WBKB/SB/WVB/WSoc	1992-96	2003
HAASE, Jay W.	1975	Athlete	M-Fencing	1971-75	1988
HAMMOND, Kenneth W.	1979	Athlete	M-Soccer	1974-77	2003
HANDWERKER, Andy	1963	Athlete	M-Soccer	1959-62	2002
HAUSSER, Paul C.	--	Administrator	--	1953-91	1990
		Coach	Fencing/Baseball	1954-88/53-72	
HUBEY, Ali	1972	Athlete	M-Soccer	1968-71	1990
HURTADO, Fabian	1975	Athlete	M-Soccer	1970-74	1987
IRIS, Herb	1951	Benefactor	--	--	2007
KAMINSKY, Nicholas J.	1978	Athlete	Baseball	1975-78	2006
KASBARIAN, Raymond P.	1966	Founder/Athlete	Judo	1962-66	1989
KETZNER, Robert Shelby	--	Coach	Rifle	1962-86	1987
KHOWAYLO, Alex	1969	Athlete	M-Soccer	1960-63	1996
LUBETKIN, Charles "Tudy"	1953	Athlete	M-Basketball/M-Track	1949-52	1994
LYNCH, Robert K.	1984	Athlete/Coach	M-Fencing	1977-80/86-91	1993
MacDONALD, Dan	1984	Athlete	Baseball	1981-84	1992
OLSEN, Richard J.	1969	Athlete	M-Basketball	1965-69	1988
OLSON, George R.	1977	Athlete	Baseball	1974-77	1987
PAULIUS, Raymond V.	1985	Athlete	M-Soccer	1980-83	2006
RODGERS, Tarik	1996	Athlete	M-Volleyball	1992-95	2010
ROGERS, Warren	1988	Athlete	M-Basketball	1983-87	1993
ROMULUS, Rudy	1991	Athlete	M-Volleyball	1988-91	1996
ROSS, Jonathan A.	1956	Athlete	M-Soccer	1953-55	2010
SARLO, Paul A.	1992	Athlete	Baseball	1989-91	2005
SCHMID, John "Gene"	--	Asst Coach/Coach	Baseball	1968-72/73-97	2002
SIMON, J. Malcolm	--	Coach	M-Soccer	1955-83	1994
		Director of Athletics	--	1983-94	
SKURLA, Peter J.	1941	Athlete	Bowling	1937-41	1992
SORIANO, Gregory	1975	Athlete	M-Fencing	1968-72	2010
SWANSON, Robert F.	--	Director of Athletics	--	1947-82	1986
TAETZSCH, Robert	1952	Athlete	M-Fencing	1948-52	2007
TAETZSCH, William	1952	Athlete	M-Fencing	1948-52	2007
TOSATO, Lawrence P.	1956	Athlete	M-Basketball/Baseball	1952-56	1987
TUBELLO, Jeffrey	1976	Athlete	Rifle	1972-76	1988
VAN WRIGHT, Nevea	1997	Athlete	W-Basketball	1991-96	2005
WALSH, John J.	1966	Athlete	MSoc/MBKB/Baseball	1962-66	1986
WASNIEWSKI, Frank	1980	Athlete	M-Tennis	1977-80	1990
WELGOS, Bob	1962	Athlete	M-Basketball/Bowling	1959-62	2005
WOROBEC, Myron S.	1966	Athlete	M-Soccer	1962-65	1994
YONEZUKA, Yoshishada	--	Founder/Coach	Judo	1962-?	1991
ZORN, Werner	1962	Athlete	M-Soccer	1958-61	1988

## Teams

Year	Accomplishments
1960	NAIA co-National Champion
1981-82	NJIT's first ECAC and IAC champion
1982	NJIT's second ECAC and IAC champion

## Year of Induction

1988
1990
1993

background:  
Mary Munoz



## DIRECTIONS TO NJIT

### FOR GPS USERS

The address for Lubetkin Field at J. Malcolm Simon Stadium and the Estelle and Zoom Fleisher Athletic Center is 80 Lock Street, Newark, NJ, 07102

### BY CAR

#### **New Jersey Turnpike: Driving North from South Jersey:**

Take NJ Turnpike to Exit 13A Newark Airport. After toll stay to left and follow signs to Rt. 1 & 9 North. You will merge onto Rt. 1 & 9 North. Airport will be on right. Follow signs for downtown Newark and Rt. 21 North (left lane exit ramp). Downtown Newark will be in front of you. NYC will be off to your right. Follow Rt. 21 North (McCarter Highway). Turn left on Raymond Blvd. Follow Raymond Blvd. past Warren Street traffic light and Fleisher Athletic Center & Lubetkin Field at J. Malcolm Simon Stadium will be to your right (one soccer goal line runs along Warren Street and the soccer sideline parallels Lock Street).

#### **New Jersey Turnpike: Driving South from North Jersey:**

Take exit 15W to Route 280 West, then follow Route 280 West directions.

**Route 280 West:** After drawbridge, take Exit 15A (Rt. 21 South - McCarter Highway). Follow Rt. 21 South to Raymond Blvd. Turn right on Raymond Blvd. Follow Raymond Blvd. past Warren Street traffic light and Fleisher Athletic Center & Lubetkin Field at J. Malcolm Simon Stadium will be to your right (one soccer goal line runs along Warren Street and the soccer sideline parallels Lock Street).

**Route 280 East:** Take Exit 15 (Rt. 21 South - McCarter Highway). Follow Rt. 21 South to Raymond Blvd. Turn right on Raymond Blvd. Follow Raymond Blvd. past Warren Street traffic light and Fleisher Athletic Center & Lubetkin Field at J. Malcolm Simon Stadium will be to your right (one soccer goal line runs along Warren Street and the soccer sideline parallels Lock Street).

#### **Garden State Parkway (North & South bound):**

Take exit 145 to Route 280 East, then follow Route 280 East directions.

**Route 1 & 9 North & South:** Take exit marked Newark, Rt. 21 North (McCarter Highway). Follow Rt. 21 North (McCarter Highway). Turn left on Raymond Blvd. Follow Raymond Blvd. past Warren Street traffic light and Fleisher Athletic Center & Lubetkin Field at J. Malcolm Simon Stadium will be to your right (one soccer goal line runs along Warren Street and the soccer sideline parallels Lock Street).

**Route 78 East:** Take Route 78 East to Rt. 21 North. Turn left on Raymond Blvd. Follow Raymond Blvd. past Warren Street traffic light and Fleisher Athletic Center & Lubetkin Field at J. Malcolm Simon Stadium will be to your right (one soccer goal line runs along Warren Street and the soccer sideline parallels Lock Street).

**Route 22 East:** Take Route 22 East to Route 21 North. Turn left on Raymond Blvd. Follow Raymond Blvd. past Warren Street traffic light and Fleisher Athletic Center & Lubetkin Field at J. Malcolm Simon Stadium will be to your right (one soccer goal line runs along Warren Street and the soccer sideline parallels Lock Street).



**Route 21 North:** Follow Rt. 21 North to Raymond Blvd. Turn left onto Raymond Blvd. Follow Raymond Blvd. past Warren Street traffic light and Fleisher Athletic Center & Lubetkin Field at J. Malcolm Simon Stadium will be to your right (one soccer goal line runs along Warren Street and the soccer sideline parallels Lock Street).

**Route 21 South:** Follow Rt. 21 South (McCarter Highway) to Raymond Blvd. Turn Right on Raymond Blvd. Follow Raymond Blvd. past Warren Street traffic light and Fleisher Athletic Center & Lubetkin Field at J. Malcolm Simon Stadium will be to your right (one soccer goal line runs along Warren Street and the soccer sideline parallels Lock Street).

**New York Thruway:** Thruway to Exit 14A, Garden State Parkway. Follow Garden State Parkway directions above.

**George Washington Bridge:** NJ Turnpike South to Exit 15W. Follow Route 280 West directions above.

**Lincoln Tunnel:** West on Rt. 3 to Rt. 21 South. Turn right onto Raymond Blvd. Follow Raymond Blvd. past Warren Street traffic light and Fleisher Athletic Center & Lubetkin Field at J. Malcolm Simon Stadium will be to your right (one soccer goal line runs along Warren Street and the soccer sideline parallels Lock Street).

**From Brooklyn, Queens and Long Island:** Take Verrazano-Narrows Bridge (Interstate 278) and follow 278 across Staten Island. Cross Goethels Bridge. Follow signs to New Jersey Turnpike North then follow New Jersey Turnpike directions above.

### PARKING

**Bus/Van Parking:** Visiting buses and vans may usually park on Lock Street adjacent to the athletic center. Please be careful not to block the parking space reserved for the doctor.

**Visitor Parking:** Visitor parking may be reserved in advance through your host. Otherwise, visitor parking at NJIT is available in the NJIT parking deck. Turn right onto Warren Street. Turn right onto Colden Street and proceed around the block to Summit Street. Parking Deck entrance is located to your right before the intersection with Warren Street.

#### **Parking for on-campus athletic contests:**

NJIT is offering free off-street parking for fans attending regular season home soccer matches, volleyball games and basketball games. The parking entrance, marked by a sign, is located across Warren Street from the soccer field.

### OTHER TRANSPORTATION SYSTEMS

**Newark Liberty International Airport:** Minutes from the NJIT campus. A minibus (Newark Airlink) or taxi service connects the airport with Penn Station in Newark. Bus, Newark Light Rail, and taxi connections are available at the station.

**Newark Penn Station:** Located in downtown Newark, connections to the NJIT campus may be made by bus, Newark Light Rail, or taxi.

**Morris & Essex Broad Street Station:** A five-block walk to the NJIT campus via MLK Boulevard to Central Avenue. Taxi service is also available.

**Newark Light Rail:** From Penn Station in Newark, take the Warren Street stop for the NJIT campus. The Warren Street stop is on the sidewalk behind the press box for Lubetkin Field at J. Malcolm Simon Stadium.

### OFFICIAL HOTEL OF THE HIGHLANDERS

#### **SpringHill Suites Newark Liberty International Airport**

652 Route 1 & 9 South, Newark, NJ  
973/624-5300 (ask for Melanie Schellhas)  
ASK FOR SPECIAL NJIT HIGHLANDERS RATE  
(discount code NJIS for kings, NJIT for doubles)

### DOWNTOWN

#### **Hilton Newark Gateway**

Gateway Center, Raymond Boulevard & McCarter Highway  
Newark, NJ, 973/622-5000

#### **Robert Treat Hotel**

50 Park Place, Newark, NJ, 973/622-1900

#### **Hampton Inn & Suites Newark Riverwalk**

100 Passaic Ave, Harrison, NJ, 973/483-1900

### NEAR NEWARK LIBERTY INTERNATIONAL AIRPORT

#### **Best Western Newark Airport West**

101 International Way, Newark, NJ, 973/621-6200

#### **Hilton Newark Airport**

1170 Spring Street, Elizabeth, NJ, 908/351-3900

#### **Holiday Inn Newark Liberty International Airport**

160 Frontage Road, Newark, NJ, 973/589-1000



## G R E A T   W E S T   C O N F E R E N C E



NJIT's first multi-sport conference affiliation at the Division I level, came when the Highlanders aligned with the Great West Conference, which began play as an expanded multi-sport conference in 2009-10.

Member schools are spread over seven states and four time zones, giving each school added exposure in new destinations. The conference, which began as a football-only league, took a giant leap in the collegiate athletic world with expansion to include a full range of sports and new members.

Joining the league in July 2008 were: Houston Baptist, NJIT, North Dakota, South Dakota, Texas-Pan American and Utah Valley. Chicago State accepted the league's invitation to join in October 2008. These seven schools joined football-only members Cal Poly, UC Davis and Southern Utah.

As the conference began planning for multi-team sport competition, several teams were added in women's soccer and baseball to help provide a more diverse and competitive field. Delaware State, Howard and South Carolina State joined as associate members in women's soccer and they formed the East Division, along with NJIT. Northern Colorado and New York Institute of Technology joined as associate members in baseball, while Seattle was added as an associate member in cross country and track and field.

NJIT, Texas-Pan American and Utah Valley had been playing each other in multiple sports, including home-and-home games in men's and women's basketball, since NJIT began Division I competition for the first time in 2006-07.

NJIT and Utah Valley completed their NCAA reclassification and became championship-eligible members of NCAA Division I in September. Houston Baptist announced an agreement with the NCAA that can make HBU an active member of Division I in 2011-12 and North Dakota and South Dakota will be active members of Division I in 2012-13. Texas-Pan American and Chicago State have

been active Division I programs for many years.

The expanded conference is not an automatic NCAA Division I championship postseason qualifier, but it offers the benefit of conference championship competition, stable scheduling opportunities and individual recognition for student-athletes through weekly and season all-conference recognition.

The champion of the Great West Conference men's basketball postseason tournament (hosted in 2011 by Utah Valley) receives an automatic bid into the CollegeInsider.com Tournament (CIT) a 16-team national postseason tournament won by Old Dominion in 2009 and Missouri State in 2010 in a game that was televised nationally on Fox College Sports.

Governance of the GWC remains primarily with the member institutions. Each member institution is represented on the President's Council by its CEO. General operations and management of the Conference is conducted by the Joint Council, comprised of Directors of Athletics and Senior Woman Administrators.

NJIT's sports that compete in championships sponsored by the Great West Conference are: baseball, basketball (men's and women's); cross country (men's and women's); track and field (men's and women's; indoor and outdoor); women's tennis; and, women's volleyball.

Two NJIT sports that do not come under the Great West umbrella continue in their existing conferences—men's soccer in the Atlantic Soccer Conference and men's volleyball in the Eastern Intercollegiate Volleyball Association, which has an automatic NCAA postseason berth, claimed in 2008 by eventual national champion Penn State.

The latest conference news and information is available on-line at <http://www.greatwestconference.org/>.

### CONFERENCE ADMINISTRATIVE OFFICE

**Ed Grom**, Commissioner; Phone: (630) 428-4492; E-Mail: [grom@gwconference.org](mailto:grom@gwconference.org)

**Mike Sharpe**, Assistant Commissioner; Phone: (816) 210-4305; E-Mail: [sharp@gwconference.org](mailto:sharp@gwconference.org)

**Jacque Cottrell**, Director of Media Relations (SWA); Phone: (713) 305-8614; E-Mail: [cottrell@gwconference.org](mailto:cottrell@gwconference.org)

**Cliff Martin**, Media Relations Assistant; Phone: (214) 770-6463; E-mail: [martin@gwconference.org](mailto:martin@gwconference.org)





## 2010 HIGHLANDERS WOMEN'S SOCCER

Back Row (l-r): Assistant Coach Manda Ridsen, Rebecca Tustin, Kori Washington, Michelle Borth, Sadie Mele, Caity Ragni, Anna Kornmuller, Erin Morris, Celianna Pasciel, Amanda Dotten, Head Coach Kevin Leacock

Middle Row (l-r): Gechi Ukaegbu, Camille Billing, Mary Munoz, Christi Taylor, Catherine Andrus, Piper Lunan, Casey Parisi, Jennifer Kalczewski

Front Row (l-r): Kyrsten Howell-Harries, Christina LaBellarte, Meryl Hershfield, Melanie Rodrigues, Amanda Redden, Erin Schmitt



## 2010 HIGHLANDERS WOMEN'S SOCCER

<b>Aug. 27</b>	<b>MONMOUTH</b>
Aug. 29	Saint Peter's
<b>Sept. 3</b>	<b>BRYANT</b>
Sept. 5	Saint Joseph's
<b>Sept. 10</b>	<b>WAGNER</b>
Sept. 12	Mount St. Mary's
Sept. 17	Lafayette
Sept. 21	Rider
<b>Sept. 24</b>	<b>ARMY</b>
Sept. 26	Howard *
Oct. 3	Lehigh
Oct. 8	Delaware State *
<b>Oct. 15</b>	<b>SOUTH CAROLINA STATE *</b>
<b>Oct. 17</b>	<b>LONGWOOD</b>
<b>Oct. 22</b>	<b>DELAWARE STATE *</b>
<b>Oct. 29</b>	<b>HOWARD (Senior Day) *</b>
Oct. 31	South Carolina State *
Nov.5-8	Great West Conference Tournament Houston, TX

\* Indicates Great West Conference Game

Home games in **BOLD CAPS** played at Lubetkin Field

