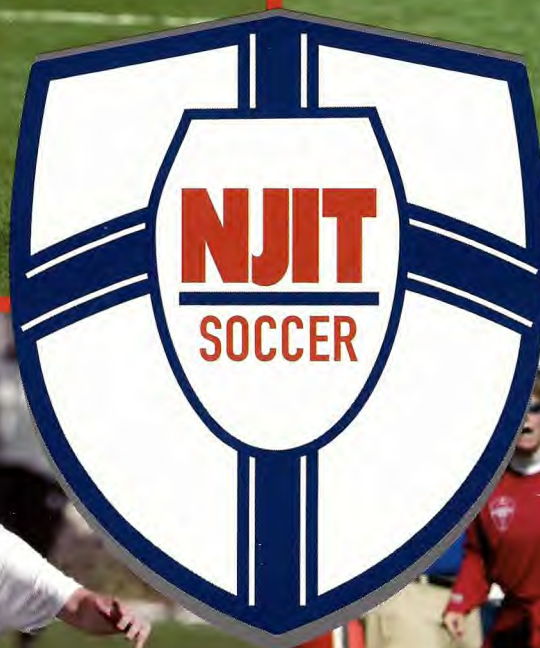




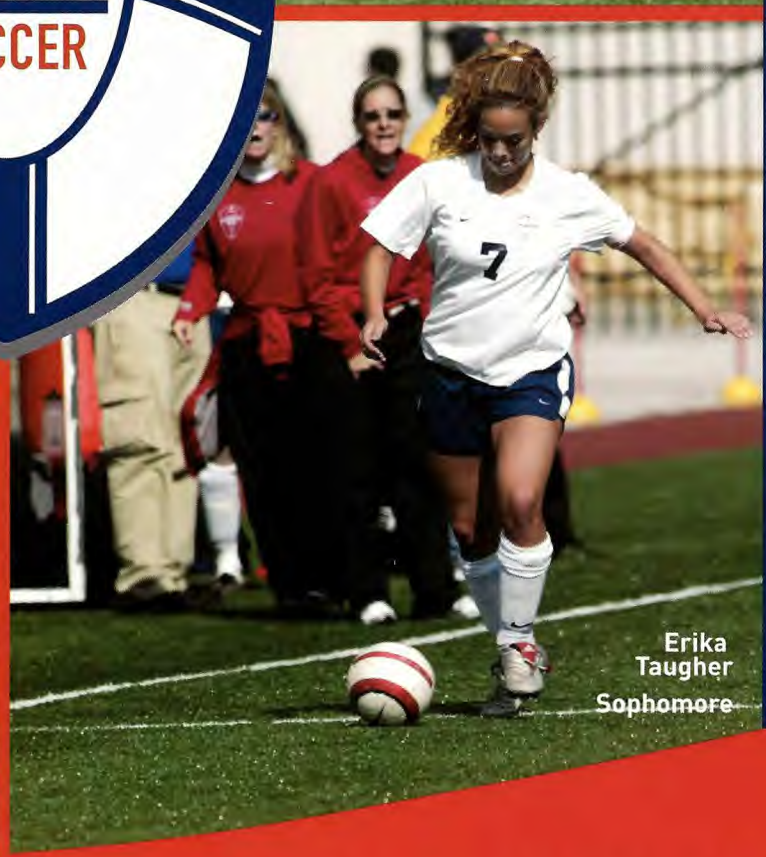
Erin Salgado
Senior



Amanda Bayiokos
Sophomore



Katie Hepfinger
Sophomore



Erika Taugher
Sophomore



The NJIT Campus Center

NJIT FACTS

Location	University Heights, Newark, NJ 07102
Founded	1881 (as Newark Technical School)
Undergraduate Enrollment	5,800
Nickname	Highlanders
Colors	Scarlet and White with Navy
President	Dr. Robert A. Altenkirch
Director of Athletics	Lenny Kaplan
Athletics Dept. Phone	(973) 596-3636
Athletics Dept. FAX	(973) 596-8295
Athletics Dept. URL	www.njit.edu/athletics
Head Men's Soccer Coach	Alyssa Radu
Career Record	5-10-1 (2)
Record at NJIT	same
Office Phone	(973) 596-5219
Best Time To Reach	mornings
Radu E-Mail	radu@adm.njit.edu
Assistant Coaches	Tiffany Williams, Kevin Leacock
Captains	Erin Salgado
First Year of Program	1996
All-Time Record	24-101-2 (9 yrs)
Affiliations	NCAA I(Reclassifying), ECAC
Home Field	Lubetkin Field (SprinTurf, lighted, cap. 1,000)
2004 Record	5-10-1
Conference Record	2-7-1
Starters Returning/Lost	6/5
Letterwinners/Returning/Lost	6/3
Coordinator of Sports Information Services	Tim Camp
Office Phone	(973) 596-8324
Home Phone	(201) 451-1043
E-Mail	camp@njit.edu
Men's Soccer/Sports Information FAX	(973) 596-8440
Results Hotline	(973) 596-5555
Admissions Office Phone	1-800-925-NJIT
Admissions E-Mail	admissions@njit.edu
Online Undergraduate Application	https://hex.njit.edu/undergradAppln/ugApply.jsp

Quick Facts	IFC
Season Outlook	2
The Highlanders In Division I	3
University Administration	4
Coaching Staff	5
Roster	6
2004 Statistics and Results	7
Captain Profiles	8
Team Profiles	9-12
About NJIT	13-14
About NJIT & Newark	15
Athletics Facilities	16
Happenings In and Around Newark	17
School Records	18
Year By Year Results	19
All Time Roster	20
Directions/Accommodations	21
Athletics and Physical Education Staff Directory	22
NJIT Hall of Fame	23
Central Atlantic Collegiate Conference	24
Team Picture	IBC
Schedule	OBC

MEDIA INFORMATION

This guide is designed to assist the media in their coverage of New Jersey Institute of Technology women's soccer. The NJIT sports information services department will provide an official NCAA box score 10 minutes after the conclusion of each home game.

All requests for interviews with players and coaches must be made through the sports information office, 973-596-8324. Following games, Coach Radu and selected players will be available on the field following a 10-minute cooling-off period. All visiting radio broadcast requests should be made at least two weeks in advance.

Right: NJIT's clock tower.



NJIT 2005 WOMEN'S SOCCER TEAM VISION & MISSION STATEMENT

***Our character will show
great determination and persistence
to become an undefeated family:***

- By sacrificing individual goals to unify friendships and support a foundation of trust, commitment and respect.
- While staying focused during times of adversity and working hard to execute our goals with a positive attitude.
- With discipline and a relentless work ethic to consistently motivate each other.

CREDITS

The 2005 NJIT Women's Soccer Guide is a production of the NJIT sports information services department in cooperation with the Office of University Communications. Writing by Tim Camp. Special thanks to Michelle Pautler ('05) for research and editorial assistance. Additional editorial assistance by Lenny Kaplan, Alyssa Radu and Stephanie Pillari. Front cover design by Johanna Moroch, Interior design by Samantha Horning. Photography by Jim Clarke and PM Studios, Edison, NJ. Printing by Prestige Graphics, Union, NJ.

WHY THE HIGHLANDERS?

The area on which the NJIT campus sits, now known as University Heights, was formerly called the Newark Highlands. The mailing address of the University used to be on High Street, until the road was re-named Dr. Martin Luther King Jr. Boulevard.

The New Jersey Institute of Technology women's soccer program is a whirlwind of activity as it heads into its second season under the guidance of head coach Alyssa Radu.

Along the way, 2005 marks the 10th season of women's soccer at NJIT overall and its final season of competition in the Central Atlantic Collegiate Conference, as the Highlanders continue the process of reclassifying to NCAA Division I.

The 2005 schedule includes dates against two Division I opponents, including Drexel in the opener on August 26. Those contests will offer a preview of things to come, which includes a Division I schedule in 2006 and Division I championship eligibility in the 2007 season.

Radu, who played on nationally-ranked high school teams in western Pennsylvania, went on to be a four-year starter at Rutgers University from 1997 through 2000. After two years as an assistant coach at the collegiate level, she was named NJIT's head coach in January 2004.

Meeting her first head coaching challenge head on, she led the program to its most CACC conference wins matched the second-highest overall wins total in Highlanders' history.

The 2005 season will include changes on and off the field for the Highlanders. Off the field, the coaching staff of Radu and second-year assistant coach Tiffany Williams has grown to include a goal-keeper coach, Kevin Leacock.

On the field, the 2005 Highlanders will be fortified by the fruits of a full recruiting class, with newcomers from the high school ranks, as well as transfers, two of whom bring Division I experience with them to NJIT. The new players will blend with six holdovers from the 2004 squad.

"We are comfortable with the team we have," said Radu, looking ahead to her second NJIT team. "How we get will be critical to our success. We have some tough games early in the season that will test us.

"We gained talent and experience in the back and because we can build our attack out of the back, our attack will be stronger."

Having taken a step forward in conference play a year ago, the Highlanders will aim to keep moving ahead and leave their mark in their last season in the CACC.

GOALKEEPERS

In 2004, fifth-year senior Kate Duncan was a constant for NJIT, protecting the goal for all but about four minutes of the team's 16 games.

With Duncan, the 2004 captain, having graduated, the Highlanders will look to a pair of newcomers to fill the void. The candidates in goal are junior transfer Bruna Lotufo, who hails from Brazil, and Angelica Sepulveda, who was already on campus as an NJIT student and is joining the Highlanders for the 2005 season.

"We had great leadership last season out of our senior keeper [Duncan]," Radu noted. "We hope, over time, our new keepers will develop that same level of leadership."

DEFENDERS

The defensive third is where the Highlanders' new look should be most apparent, with transfers and freshmen filling key slots. Two of the transfers, Dena Baskous and Cindy Bayiokos, bring Division I experience to NJIT.

Baskous comes in from the University of Connecticut, where she logged playing time as a freshman on the 2004 Big East Conference tournament champions, who then advanced to the Sweet 16 of the NCAA Tournament. Before college, Baskous was a two-time All-State selection in Alaska.

Cindy Bayiokos, a junior, joins her sister, returning sophomore Amanda Bayiokos, on the Highlanders. Cindy played two seasons at Division I Saint Peter's, where she started all 39 of her career matches. Both Baskous and Bayiokos are tri-captains, along with Erin Salgado.

Freshman Katie DeRosa, who played on state champion high school and club teams in New Hampshire, should be in the mix for playing time at the outset.

Returnee Stephanie Macias saw action in all 16 games last season as a freshman.

Katie Hepfinger, the 2004 Highlanders' team Most Valuable Player as a freshman midfielder (1 g, 1 a, 3 points), could see action on the back line, as could Tipperary, Ireland native Aine O'Dwyer, a junior, playing college soccer for the first time.

"Defense was one area where we, as a coaching staff, felt we needed to add players in the off-season. You can score record amounts of goals, but it means nothing if you are unable to stop the opponent," said Radu. "We like to attack out of the back, so we need a well-rounded skilled defender in our system. We feel we have brought in the individuals to fit that system."

MIDFIELDERS

"Our midfield is very skilled and will be the most competitive area," Radu said. "We have good leadership and attitude in this area, too."

Senior Erin Selgado has been a team captain since 2002, when she was a redshirt freshman. She notched three goals and an assist last season, after leading NJIT in scoring in 2002 and 2003. She is third on the school career list in goals (11) and points (28) and enters her final season in striking distance of the top spot in both categories.

Amanda Bayiokos (1 g) returns as a center midfielder after playing in 14 games last year as a freshman.

Hepfinger, the 2004 team MVP, O'Dwyer and freshman Krista Cohen all figure in the midfield picture, as well.

O'Dwyer, who is 5-foot-10, will bring height and athleticism to the soccer field. A standout in basketball and club soccer in her native Ireland, she will become a two-sport college athlete after two seasons as a starter on NJIT's basketball team.

Also competing for minutes as outside midfielders will be junior Joanna Powdhar, a transfer from neighboring Essex County College, sophomore Keri-Anne Macaulay and freshmen Emma Vinski.

FORWARDS

Erika Taugher, who picked up a team-leading six goals, five assists and 17 points last season as a freshman, returns as a key player in the team's plans.

The Oakville, Ontario product has played on provincial select teams in her home country. Her resume expanded further, when she became part of the national team pool for Portugal, her mother's native country.

The freshmen, Emma Vinski and Krista Cohen, who are vying for work in midfield, are also candidates for work at forward, along with classmate Briana Morales.

The skill of the forwards will be augmented by support from the midfield and from the back, where the attack can begin in NJIT's system. "We have added skill and experience in the back and we have improved our speed," said Radu. "We will look to take advantage of our speed and create offensive opportunities. We have set goals to improve our offensive numbers."

New Jersey Institute of Technology women's soccer is on the fast track to NCAA Division I reclassification, with 2005 marking the first year of the two-year single-sport reclassification.

As such, soccer will become the first of NJIT's women's sports to achieve championship eligibility, with full Division I status arriving in the 2007 season.

Women's soccer follows, by two years, its men's counterparts as the leaders in NJIT's overall athletic reclassification to NCAA Division I.

The NCAA allows Division II or Division III schools to elevate one sport in each gender to Division I in a process that takes two years to complete. Men's soccer was the first program to make the move, starting in 2003. In 2004, the men played their first Division I-only schedule and in 2005 they are eligible for Division I postseason championship competition.

Women's soccer is following a corresponding two-year single-sport reclassification track after the men.

For the women, 2005 marks the first year of the process, as athletics director Lenny Kaplan has submitted an application and strategic plan for the move to the NCAA. An update to the plan will be submitted in the summer of 2006 and another will be sent the following summer.

In 2005, the women's soccer team will take on two Division I opponents, including in the season opener at Drexel. In 2006, the program will be in full compliance with all Division I rules and by-laws, including a schedule of at least 11 Division I opponents. NJIT expects to be a full Division I member in women's soccer in 2007.



Above: Highlander mascot.

Meanwhile, the NCAA approved this summer NJIT's request to undertake the first-year reclassification of its entire intercollegiate athletics program to NCAA Division I, a process that takes four years to complete.

The move to Division I has advanced quickly from the November 2002 discussion among President Robert A. Altenkirch, Vice President Joel Bloom and Athletics Director Lenny Kaplan.

From there, came a proposal from Dr. Altenkirch to the Board of Trustees, which unanimously approved in February 2003 a plan to reclassify men's soccer to Division I.

Off the field, the scholarship and operating budgets have been enhanced, with expanded coaching

staffs and increased scholarship dollars.

Even the playing field, itself, was upgraded with the installation of SprinTurf artificial grass on NJIT's Lubetkin Field.

Upgrading athletics has been a priority for Dr. Altenkirch since he was selected as the seventh President of NJIT in May 2002.

"As NJIT continues to grow academically, and as a residential university, strengthening the athletics program through the transition to Division I will allow us to align the university athletically with our academic peers," said Altenkirch. "It will also enable us to recruit the best and brightest student-athletes, improve athletics facilities available to the entire NJIT community, gain regional and national visibility, and build strong linkages with students that will carry over to their days as alumni."

Women's soccer head coach Alyssa Radu is looking forward to what lies ahead. "We are honored that we have this opportunity as a program and coaching staff," she said. "We understand the importance of this move and we will keep it in mind in the way we conduct ourselves on and off the field."

The NJIT women's soccer program enters its 10th season in 2005, having begun play in 1996 and has competed at the NCAA Division II level since 1997. The Highlanders have competed in the Central Atlantic Collegiate Conference since the 2000 season and 2005 will be their last season of CACC competition.

Dr. Robert A. Altenkirch

President

Dr. Robert A. Altenkirch, formerly vice president for research at Mississippi State University (MSU), joined NJIT as the university's seventh president in July 2002. During his tenure as MSU vice president for research, science and engineering, expenditures as reported to National Science Foundation (NSF) increased dramatically—75% from 1997 to 2001.



Prior to his appointment as vice president at MSU, Altenkirch served as professor of mechanical and materials engineering and dean of the College of Engineering and Architecture at Washington State University. From 1988 to 1995, he was professor of mechanical engineering and dean of the College of Engineering at MSU. He also served as professor and chair of mechanical engineering at the University of Kentucky.

In addition to the research program, his responsibilities encompassed congressional relations, intellectual property management and economic development. While dean of engineering at MSU, he led the effort to secure National Science Foundation funding for the establishment of the MSU NSF Engineering Research Center for Computational Field Simulation in

1990. Additionally, the Center was instrumental in helping the State of Mississippi attract a \$1 billion Nissan manufacturing plant.

Altenkirch holds a PhD from Purdue University, an MS from the University of California, Berkeley, and a BSME from Purdue, all in mechanical engineering. He is the author of over 50 publications and nearly 100 presentations in combustion and heat transfer and served as principal investigator for ten Space Shuttle experiments investigating the spread of fire in reduced gravity. He is a Fellow of the American Society of Mechanical Engineers.

Dr. Joel Bloom

Vice President of Academic and Student Services

Dr. Joel Bloom has worked at NJIT since July 1990. In his current position, he is responsible for nine divisions of the university, including Physical Education and Athletics.



Dr. Bloom is also Dean of the Albert Dorman Honors College, which enrolls more than 525 students who are typically in the top 10 percent of their high school graduating class.

Prior to NJIT, Dr. Bloom spent seven years as assistant Commissioner in the New Jersey Department of Education. He is currently the Chair of

the NASULGC Council of Chief Student Affairs Officers and the Newark Consortium Board for Pre-College Education.

Dr. Bloom earned his Bachelor's and Master's Degrees from Hunter College, and holds a Master's and Doctorate from Columbia University Teachers College.

Lenny Kaplan

Director of Athletics

After serving 11 years in the athletics department at Division-I Manhattan College, Lenny Kaplan was appointed in August 2000 to head NJIT's division of physical education and athletics.



Kaplan is a 1988 graduate of St. John's University with a degree in athletics administration. After three years as Manhattan's director of operations, he served as an assistant athletics director with the Jaspers from 1991-2000.

Kaplan is the Central Atlantic Collegiate Conference Executive Committee Supervisor for men's basketball, and serves on the NCAA Division II nominating committee, the D-II Women's Soccer Regional Advisory Committee, and the Eastern Intercollegiate Volleyball Association Executive Committee.

Kaplan resides in Merrick, New York, with his wife, Nancy, and their sons, Michael and Joshua.

Alyssa Radu

Head Coach

Alyssa Radu starts her second season as head coach at NJIT. She posted a 5-10-1 record in her first season. During her time here at NJIT she is working to build a program that will elevate to Div I in 2006.



Radu comes to NJIT after two years as an assistant at Centenary (NJ) College. During her tenure, the Cyclones posted a record of 21-14-1, twice set the school record for victories, and won the 2003 Women's Intercollegiate Athletic Conference regular season championship. She brings extensive experience coaching in all youth ages. She is in her fourth year at the Jersey Knights Soccer Club. She has studied under the youth coaches of two professional European clubs, Manchester United and PSV Eindhoven. She holds coaching licenses from both the NSCAA and USSF.

Radu was a four-year starter for Division I Rutgers University from 1997-2000. While in college, she played semi-pro in the W-League for the New Jersey Splash and also was a member of PDA (Player Development Academy). A team that was a National Finalist and a National Champion in two consecutive years.

A native of Pittsburgh, Pennsylvania, Radu played scholastically at Upper St. Clair High School, where her nationally-ranked teams were a state finalist and two-time district finalist. She also won 10 State Cups and one Region I championship, all while playing for Beadling Soccer Club. In addition to her club experience she was a six-year member and regional pool player in the Olympic Development Program.

In addition to her coaching experience Radu, right out of college, was the director of public relations and marketing at Global Technology Operations in Downingtown,

Pennsylvania. For two years Radu with two other partners operated an e-commerce business. She received a Bachelor of Arts degree in journalism/media studies from Rutgers in 2001. She is currently working towards her MBA at NJIT. She resides in North Brunswick.

Tiffany Williams

Assistant Coach

Tiffany Williams starts her second season on the NJIT coaching staff. She brings extensive youth coaching experience to NJIT. She started her college coaching career while still an undergraduate at Division I Rutgers University. Unfortunately, her playing career ended after sustaining a serious head injury in 2001. She joined the Rutgers coaching staff shortly thereafter. Williams and Radu were college teammates both at Rutgers and PDA.



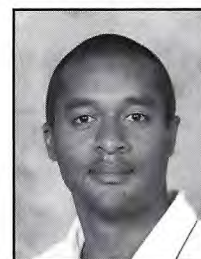
Williams is most proud of her accomplishments in the Olympic Development Program. She played seven years representing Eastern Pennsylvania and also played three years on the Region I team and one year with the youth national pool. At the same time Williams played for Downingtown High School, (PA) where in 1998 she was name High School All-America. She also played for nationally recognized FC DELCO. She was part of five state cup championships and one Region I finals appearance. Williams was recently inducted into the FC DELCO Hall of Fame.

Williams holds coaching license from the NSCAA and USSF. She received a bachelor's degree in economics from Rutgers in 2004, and is pursuing an MBA from NJIT. She resides in North Brunswick.

Kevin Leacock

Assistant Coach/ Goalkeeper Coach

Kevin Leacock is a new addition to the NJIT Women's Soccer Coaching Staff, specializing in Goalkeeping Training. A native of Trinidad and Tobago, he earned himself a spot as the Goalkeeper on the National Under-21 Soccer Team traveling to Puerto Rico to participate at the Central American and Caribbean Games (1993), and subsequently at the Pan American Games in Argentina (1994) with the National Under 23-Team.



Kevin came to America in 1995 on an athletic scholarship to Long Island University (Brooklyn Campus) where he played 4 years as both a Goalkeeper and Center Back. During his time at LIU, he achieved recognition as a recipient of the All American Scholar Collegiate Award, the Northeast Conference All Academic Team, and the "Who's Who" College Recognition Award, each respectively for two consecutive years. He graduated magna cum laude with a bachelor's degree in the field of Business Management.

Upon his return to New Jersey in 2004 Kevin immediately began coaching, finding success with a U-17 Girls Soccer team participating in the NJ Region 1 League. He currently holds the NSCAA Advanced Regional Diploma as well as the Regional Goalkeeping Diploma, and is looking forward to pursuing his National Diploma in the coming year. Kevin is also the Operations Manager for the Athletics Department and resides in Hackensack, NJ.

ALPHABETICAL

No.	Name	Yr.	Pos.	Ht.	Hometown/High School (Previous College)
3	Dena Baskous	So.	B	5-9	Anchorage, AK/University of Connecticut
6	Amanda Bayiokos	So.	M	5-6	Staten Island, NY/Susan E. Wagner
8	Cynthia Bayiokos	Jr.	B	6-9	Staten Island, NY/St. Peter's College
5	Krista Cohen	Fr.	F	5-4	Egg Harbor, NJ/Egg Harbor HS
4	Katie DeRosa	Fr.	B	5-3	Hampstead, NH/Trinity HS
19	Katie Hepfinger	So.	M	5-3	Mason, OH/Mason HS
0	Bruna Latufo	Jr.	GK	5-7	Sao Paulo, Brazil/Machenzie Institute
12	Stephanie Macias	So.	B	5-4	North Arlington, NJ/St. John's University
13	Keri-Anne Macaulay	So.	M	5-5	Perkosie, PA/Pennridge HS
14	Briana Morales	Fr.	M	5-4	Paterson, NJ/DePaul HS
9	Aine O'Dwyer	Jr.	M	5-9	Killenaule, Ireland/Scoil Ruain
23	Joanna Powdhar	Jr.	B	5-3	Trinidad/Essex College
2	Erin Salgado	Sr.	M	5-4	Neptune, NJ/Neptune HS
1	Angelica Sepulveda	So.	GK	5-8	Jersey City, NJ/Dickinson HS
7	Erika Taugher	So.	F	5-9	Oakville, Canada/St. Thomas Aquinas HS
18	Emma Vinski	Fr.	F/M	5-5	Bridgewater, NJ/Bridgewater Raritan HS

NUMERICAL

No.	Name	Yr.	Pos.	Ht.	Wt.	Hometown/High School (Previous College)
0	Bruna Latufo	Jr.	GK	5-7		Sao Paulo, Brazil/Machenzie Institute
1	Angelica Sepulveda	So.	GK	5-8		Jersey City, NJ/Dickinson HS
2	Erin Salgado	Sr.	M	5-4		Neptune, NJ/Neptune HS
3	Dena Baskous	So.	B	5-9		Anchorage, AK/University of Connecticut
4	Katie DeRosa	Fr.	B	5-3		Hampstead, NH/Trinity HS
5	Krista Cohen	Fr.	F	5-4		Egg Harbor, NJ/Egg Harbor HS
6	Amanda Bayiokos	So.	M	5-6		Staten Island, NY/Susan E. Wagner
7	Erika Taugher	So.	F	5-9		Oakville, Canada/St. Thomas Aquinas HS
8	Cynthia Bayiokos	Jr.	B	6-9		Staten Island, NY/St. Peter's College
9	Aine O'Dwyer	Jr.	M	5-9		Killenaule, Ireland/Scoil Ruain
12	Stephanie Macias	So.	B	5-4		North Arlington, NJ/St. John's University
13	Keri-Anne Macaulay	So.	M	5-5		Perkosie, PA/Pennridge HS
14	Briana Morales	Fr.	M	5-4		Paterson, NJ/DePaul HS
18	Emma Vinski	Fr.	F/M	5-5		Bridgewater, NJ/Bridgewater Raritan HS
19	Katie Hepfinger	So.	M	5-3		Mason, OH/Mason HS
23	Joanna Powdhar	Jr.	B	5-3		Trinidad/Essex College

Head Coach: Alyssa Radu (Rutgers '01)

Assistant Coaches: Tiffany Williams (Rutgers '04)

Goalkeeper Coach: Kevin Leacock (LIU '98)

Captains: Dena Baskous, Cynthia Bayiokos, Erin Salgado

NJIT HEAD COACHES' CAREER RECORDS

Coach	Years	(No.)	W	L	T	Pct.
Dan Kilday	1996	(1)	0	11	0	.000
Ralph Choonoo	1997	(1)	0	13	0	.000
Jean Pierre	1998	(1)	0	10	0	.000
Tom Romano	1999-2003	(5)	19	57	1	.253
Alyssa Radu	2004-present	(1)	5	10	1	.344
Total		9 yrs.	24	101	2	.197

NJIT By the Numbers

BY CLASS:	BY LOCALITY:
Seniors1	New Jersey6
Juniors.....4	Pennsylvania1
Sophomores7	New Hampshire1
Freshman4	Canada.....1
	Brazil1
BY POSITION:	Alaska1
Goalkeepers2	New York2
Backs5	Ohio1
Midfielders7	Ireland1
Forwards2	Trinidad1

Final 2004 NJIT Women's Soccer Statistics and Results (5-10-1)

Date			Opponent	OT	Shots	Goals	Assists	Saves
8/29	L	0	ST. ANSELM	8	0-25	0	---	Duncan 8
9/4	L	0	NYIT	3	6-25	0	---	Duncan 15
9/8	L	2	at Felician	3	10-13	Taughher, Ja. Misiunas	---	Duncan 8
9/11	T	0	at Georgian Court (2ot)	0	28-2	0	---	Duncan 2
9/15	W	1	BLOOMFIELD	0	16-11	Taughher	---	Duncan 6
9/25	L	0	at Holy Family	5	9-14	0	---	Duncan 2
9/27	W	1	TPU	0	15-10	Taughher	---	Duncan 2
9/29	L	0	at Goldey-Beacom	3	11-18	0	---	Duncan 9
10/6	L	0	DOMINICAN (NY)	2	20-8	0	---	Duncan 2
10/9	L	0	at Caldwell	2	10-15	0	---	Duncan 4
10/13	W	5	at New Jersey City U.	1	24-7	Bayiokos, Salgado 2, Ji. Misiunas, Hepfinger	---	Duncan 3
10/16	W	1	MERCY	0	30-7	Taughher	---	Duncan 4
10/17	L	0	SAINT ROSE	1	2-37	0	---	Duncan 13
10/20	L	0	WILMINGTON (DE)	4	8-12	0	---	Duncan 5, Leichtman 0
10/23	L	1	NYACK	2	18-7	Salgado	---	Duncan 0
10/31	W	4	PURCHASE	1	29-7	Taughher 2, Ja. Misiunas 2	---	Duncan 4

## Player	GP/GS	Shots	G	A	Pts	YC	RC
7 TAUGHER, Erika	16/16	61	6	5	17	1	0
2 SALGADO, Erin	16/16	50	3	1	7	0	0
4 MISIUNAS, Jillian	14/4	16	3	1	7	0	0
19 HEPFINGER, Katie	16/16	29	1	1	3	0	0
11 MISIUNAS, Jayna	16/16	16	1	1	3	0	0
6 BAYIOKOS, Amanda	14/14	24	1	0	2	1	0
13 MACAULAY, Keri-Anne	16/15	10	0	1	1	0	0
8 LEICHTNAM, Elizabeth	14/12	1	0	1	1	1	0
14 FINN, Maura	16/14	13	0	0	0	0	0
20 REYNOLDS, Leigh	14/0	12	0	0	0	0	0
12 MACIAS, Stephanie	16/12	2	0	0	0	0	0
10 BUCHALA, Sarah	16/16	2	0	0	0	0	0
23 HERRERA, Jennifer	14/9	0	0	0	0	0	0
1 DUNCAN, Kate	16/16	0	0	0	0	0	0
TOTAL	16	236	15	11	41	3	0

## Goalkeepers	GP/GS	W-L-T	Min.	GA	Svs.	Pct.	Sho
1 DUNCAN, Kate	16/16	5-10-1	14:65:03	34	87	.719	4
8 LEICHTNAM, Elizabeth	1/0	0-0-0	3:57	1	0	.000	0
TOTAL	16	10-5-1	1460	35	88	.715	4

Scoring by Period	1st	2nd	Total
NJIT	6	9	15
Opponents	12	23	35



ERIN SALGADO

Senior • Midfielder • 5-4
Neptune, NJ/Neptune HS



CAREER STATS

YEAR: 2004					
GP	Sh	G	A	Pts	
16	50	3	1	7	

YEAR: 2003					
GP	Sh	G	A	Pts	
18	61	3	4	10	

YEAR: 2002					
GP	Sh	G	A	Pts	
14	59	5	1	11	

Entering her senior season (2005): Tri-Captain...Erin looks to finish off her career leading many offensive categories statistically. She has played the most games in program history, holds the record for most assists over career. Erin is also top 3 in points over career. She brings leadership to a young group and majority that will be vital for the Highlanders to succeed.

As a redshirt junior (2004): Tri-Captain...Catalyst in the central midfield position...played in every game for the highlanders. Scored 3 goals and 1 assist for a total of 7 points.

As a redshirt sophomore (2003): Co-captain...school's fourth-all time leading scorer. Led team in points with 10 (3g 4a).

As a redshirt freshman (2002): Team MVP...Co-Captain... honorable mention All-CACC... led the Highlanders in scoring with 11 points on five goals and one assist.

As a freshman (2001): Did not play for the Highlanders due to an injury...Medical redshirt.

Prior to NJIT: Two-time all county for coach Richard Smith at Neptune High... played on Monmouth-Ocean Soccer Association and New Jersey Olympic Development Program select teams.

Personal: Daughter of Luis and Bernadette Salgado, graduated as an undergraduate from NJIT in information technology, starts her MBA this fall at NJIT...born 5/1/83 in Neptune, NJ.



DENA BASKOUS

Sophomore • Defense • 5-9
Anchorage, AK/University of Connecticut



Entering her sophomore season (2005): Tri-Captain...Strong in the air... Vocal leader... hard nosed defender. Strong presence in set pieces, will be looked upon to solidify the back position.

Prior to NJIT: Transfer from the University of Connecticut, a program that won the Big East Conference Tournament. A top ten program that finished in the Sweet Sixteen. Her experience in a nationally-ranked program will aid the highlanders in the backfield; an area of priority in the off-season. High School Captain... 2-time MVP... won Alaska High School State Championship her freshman year.

Personal: Daughter of Alexander and Maria Baskous...Dena has two siblings younger brother Aristotle and older brother Thanos...She will study architecture here at NJIT...Born 7/24/86 in Anchorage, AK.



CYNTHIA BAYIOKOS

Junior • Midfielder • 5-9
Staten Island, NY/St. Peter's College



Entering her junior season (2005): Tri-Captain...She brings a strong work ethic and Division I experience that will be vital for the program as it moves forward to Division I... She will be looked upon to solidify the defense and also will be pushed forward on the flanks...strong hard nosed player.

Prior to NJIT: Cynthia, older sister of Amanda joins the NJIT women's soccer program after transferring from St Peter's College.

Personal: Older sister of Amanda Bayiokos... She is the daughter of Patricia Bayiokos...She will study Science, Technology and Society here at NJIT...Born 1/20/85 in Staten Island, NY.



BRUNA LATUFO

Junior • Goalkeeper • 5-6
Sao Paulo, Brazil/Machenzie Institute

Entering her junior season (2005): Very agile in the net and will compete for starting position in preseason...great attitude and work ethic...Coach Radu looks forward to her development as a player.

Prior to NJIT: Bruna comes to NJIT from Brazil where she was a student for the last three years. She brings maturity to the keeper position and great promise. She joins a number of other Brazilian student-athletes already apart of the athletic department.

Personal: Daughter of Fernando Lotufo and Antonia Suely Leite...She is the second youngest of five children... She will study History while at NJIT... Currently holds a 3.0 GPA...Born 4/7/84 in San Paula, Brazil.



ANGELICA SEPULVEDA

Junior • Goalkeeper • 5-4
Jersey City, NJ/Dickinson HS

Entering her junior season (2005): Angelica is new to the program and new to the sport... She brings tremendous athletic ability and after hard work in the off season will contend for the starting position in net...Coach Radu thinks she is very coachable and believes she will respond to the challenges collegiate soccer endures.

Prior to NJIT: All around athlete...Made All-County 4 years in a row for softball...Made Sweet 16 for Pony League Clifton Charmers National Softball team U-16.

Personal: Daughter of Maria Sepulveda...Angelica is the youngest of three children... her two younger sisters are Stephanie Massanet and Samantha Sepulveda...Born 8/5/85 in Jersey City, NJ.



KATIE DeROSA

Freshman • Defense • 5-3
E. Hampstead, NH/Trinity HS

Entering her first season (2005): Feisty defensive player...solid 1V1 defensive abilities...strong work ethic...will be looked upon as an outside back. Ability to go forward with strong shot.

Prior to NJIT: 2001 New Hampshire High School State Champions...Played ODP for New Hampshire for 5 years...Captain High School team...Played Club soccer for the New Hampshire Classics.

Personal: Honors program student...Katie will study Engineering at NJIT...Daughter of Lou and Jane DeRosa...Katie has a younger brother Joseph DeRosa...Born 2/2/87 in Princeton, NJ.



5

KRISTA COHEN

Freshman • Forward • 5-5
Egg Harbor, NJ/Egg Harbor HS

Entering her first season (2005): Attacking player will compete for time up top and on the flanks. Brings speed and determination... Played Club soccer for Atlantic United.

Personal: Krista will study Chemistry at NJIT...Twin brother attends Caldwell College... Born 2/2/87 in Atlantic City, NJ.



6

AMANDA BAYIOKOS

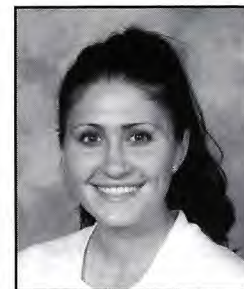
Sophomore • Midfielder • 5-6
Staten Island, NY/Susan E. Wagner

Entering her sophomore season (2005): Amanda after a year of experience will be looked upon to lead in the central midfield role.

As a freshman (2004): Intrical part of the midfield. Her gritty play and hard work helped solidify the middle of the park. Scored first collegiate goal against New Jersey City University.

Prior to NJIT: Team MVP for Coach Carleen Rago at Susan E. Wagner... played for New York ODP U-19 team...was member of Hewlett/Lawrence Blue Blaze Soccer Club... captain of New York City entry in the US Youth Games.

Personal: Amanda is joined this year by her sister Cindy who comes from St. Peter's College... Daughter of Patricia Bayiokos... Biology major...Born 8/18/86 in Staten Island, NY.



CAREER STATS

YEAR: 2004

GP	Sh	G	A	Pts
14	24	1	0	3

7

ERIKA TAUGHER

Sophomore • Forward • 5-9
Oakville, Canada/St. Thomas Aquinas HS

Entering her sophomore season (2005): This summer she was selected to the Portuguese National Team pool. One of 3 players selected to join the full national team pool of players. She has worked on her game and is expected to continue to contribute to the Highlanders offense.

As a freshman (2004): Leading goal scorer, also leading point getter as a freshman. Dominant player up front for the highlanders.

Prior to NJIT: Played club soccer for coach Ron Wright on the Oakville Angels...team was an Ontario Cup finalist and WAGS Tournament champion. Captain of Team Ontario for two years. Member of the track team in High School, also played club basketball and won a provincial title with the Burlington Panthers.

Personal: Daughter of Tim and Nelia Taugher, majoring in mechanical engineering, maintains 3.7 GPA in the honors program... born 4/26/86 in Oakville, Ontario.



CAREER STATS

YEAR: 2004

GP	Sh	G	A	Pts
16	61	6	5	17

9

AINE O'DWYERJunior • Midfielder • 5-4
Killenaule, Ireland/Scoil Ruain

Entering her junior season (2005): Aine joins the women's soccer program after playing her first 2 years of collegiate athletics on the NJIT women's basketball team... with her two sport abilities she will be looked upon to join the attack for the highlanders... she has tremendous technical abilities and strong service from the midfield position...tremendous athlete and hard worker.

Prior to NJIT: Played for Ireland's U-20 National team...three all-Ireland titles in Basketball with Scoil Ruain for Coach Sean O'Regan... also plays Gaelic football and Camogie soccer... league Player of the Year in soccer as a senior... played club basketball for the Tipperary Talons and was the Underage Club Player of the Year in 1999.

Personal: Fourth of six children of John and Rosaleen O'Dwyer... uncle Niall Quinn is a professional soccer player in England... civil engineering major... Born 5/5/85 in Tipperary, Ireland.

12

STEPHANIE MACIASJunior • Defense • 5-4
North Arlington, NJ/St. John's University

Entering her junior season (2005): Solid defensive presence...Strong service out of back... Great team player... Will be looked upon in the back again this season.

As a sophomore (2004): Played in all sixteen games in her first year at NJIT.

Prior to NJIT: Transferred to NJIT from St. John's University...Also played softball...played for the Meadowlands United Club team.

Personal: Daughter of Sixto and Dora Macias... Management major... born 12/9/84 in New York, NY.

CAREER STATS

YEAR: 2004

GP	Sh	G	A	Pts
16	2	0	0	0

13

KERI-ANNE MACAULAYSophomore • Midfielder • 5-5
Perkosie, PA/Pennridge HS

Entering her sophomore season (2005): Has made the most adjustments to her game in the offseason, improved all facets of her game. Coach Radu has been very impressed with Keri in preseason and expects her to continue to get stronger. She will be looked to play on the flanks and also will see time at outside back.

As a freshman (2004): Started all 16 games as a freshman for the Highlander at outside midfield.

Prior to NJIT: Played for coach Kim Gerhart at Pennridge High School. Member of FC Bucks Storm Soccer Club under coach Mike Robnett, graduated in the top 10 percent of her high school class.

Personal: Daughter of Kenneth and Katherine Macaulay, majoring in mechanical engineering maintains a 3.3 GPA in the honors program... born 10/28/86 in Weymouth, MA.

CAREER STATS

YEAR: 2004

GP	Sh	G	A	Pts
16	10	0	1	1

14

BRIANA MORALES

Freshman • Forward • 5-6
Paterson, NJ/DePaul HS

Entering her first season (2005): Playmaking abilities... Speedy attacker...strong shot... will compete for time up top and in the midfield...2004 New Jersey 1st team All-State... 2004 New Jersey 1st Team All-County.

Personal: Daughter of Oscar and Carmen Morales...Briana has a brother Roberto Morales... Briana will study Architecture at NJIT...Born 8/31/87 in Passaic, NJ.



18

EMMA VINSKI

Freshman • Midfielder • 5-6
Bridgewater, NJ/Bridgewater Raritan

Entering her first season (2005): Strong offensive presence...1 V 1 abilities in the final third... Tremendous speed with and without the ball...Hard worker...technically sound...Played club soccer for Bridgewater Soccer Club...All around athlete, ran track and played basketball in High School...

Personal: Honors program student...Emma will study Architecture at NJIT.



19

KATIE HEPFINGER

Sophomore • Midfielder • 5-4
Mason, OH/Mason HS

Entering her sophomore season (2005): Technically sound player with strong shot. With new team members joining the program, Coach Radu will be able to move Katie forward and utilize her attacking abilities.

As a freshman (2004): Voted team MVP. Stepped into a role needed by the team. She was the central force in the back... dangerous attacking player out of the back.

Prior to NJIT: Captain's Award winner for Coach Angie Edmonds at Mason High. Three-Time academic All-Southwest Ohio selection. Academic All-State as a senior, played for the Ohio Elite Soccer Academy.

Personal: Youngest of four daughters of John and Susan Hepfinger, majoring in Communications... born 4/25/86 in Cincinnati, OH.



CAREER STATS

YEAR: 2004

GP	Sh	G	A	Pts
16	29	1	1	3

23

JOANNA POWDHAR

Junior • Defense • 5-3
Trinidad/Essex College

Entering her junior season (2005): Joanna comes to NJIT from Essex College... she played her first two years of college soccer there...Joanna brings experience and maturity to the team and look forward to seeing her develop in the program.

Prior to NJIT: Junior College transfer from neighboring Essex College...NJCAA Champions... Best Team GPA... Voted Most Improved...Captain at Essex...Phi Theta Kappa Academic Award winner...National Dean's List.

Personal: Daughter of Judy Ali and Ramanand Powdhar... Joanna will study Mechanical Engineering... She currently holds a 3.3 GPA... Born 8/12/83 in Port-of-Spain.



NJIT's Campus Center, opened in September 2004, is the final phase of a three-year, \$83.5-million campus makeover. It is designed to be the focal point of a vibrant campus life. The center features a soaring, two-story circular dining hall, sheathed in gleaming, double-pane, energy-conserving glass.

The construction program encompasses two tall multi-story buildings – the East Building, housing the Albert Dorman Honors College, the Department of Biomedical Engineering, and administrative offices, and the center itself, featuring dining facilities, student offices and lounges, game rooms, campus store and ballroom. The two buildings are connected by a sky bridge,

and a European-style piazza featuring a 55-foot clock tower.

In an effort to improve communication and socialization on the 45-acre urban campus, the architects scaled the complex to create the feel of an outdoor room and give more spatial definition to the campus. "To promote socializing, we wanted to encourage people to move through spaces, not around them," said Thomas Levering, associate partner at the architectural firm.

The new round campus dining hall adds height and verve plus doubles the dining space. Its smoky gray glass provides a strong presence on the campus green. A 28,000 square-foot, rooftop grass terrace crowns it. Paths around it reroute traffic to the

center. The clock tower stands adjacent to one entrance to the center. The donated tower features a carillon that will chime hourly.

The construction represents a major portion of more than a \$100 million facilities improvement plan. Completed are additional residence space and an additional building for the business incubator program. Upgrades in the works include two of NJIT's oldest buildings, Cullimore and Eberhardt halls, located adjacent to the complex.

"A good-looking center tells a visual story," said Levering. "A center with the right stuff says life outside the classroom is as important as life within it."



NJIT's new campus center.

NJIT's history spans from the Industrial Revolution to the Information Age. Newark was a factory town when the tuition-free evening school was founded in 1881 to support local industries. From the early days, science and technology have been the engines fueling the university's development.

Over time, the university both anticipated and responded to change by expanding its curriculum and mission. Most notably, in 1919, the university established baccalaureate programs in three engineering fields. By 1975, NJIT offered a broad range of undergraduate and graduate degrees. All programs included significant research and public service components with the goal of providing an academic environment that fostered intellectual depth and breadth, as well as social responsibility.

Today, continuing a fourfold mission of instruction, research, economic development and public service, NJIT is among the leading comprehensive technological universities in the nation. The university offers 92 degree programs in 33 undergraduate majors, 40 masters and 19 doctoral programs. It has state-of-the-art facilities on a 45-acre campus in Newark and a solar observatory in Big Bear, California.

Below: Ariel photo of NJIT's campus center.



NJIT'S SIX COLLEGES

While there has been tremendous growth and diversification at NJIT, its roots are in engineering education. For more than eight decades, Newark College of Engineering (NCE) has been preparing engineering students to use science, mathematics, technology and problem-solving skills to design, construct, test and maintain products, services, and information systems.

The New Jersey School of Architecture, established in 1973, is one of the largest architecture schools in the nation and is nationally recognized for the innovative integration of computer technology into the design curriculum.

The College of Science and Liberal Arts (CSLA), established in 1982, is moving into the forefront of many national research activities from solar astronomy to computational and mathematical modeling. CSLA provides students with the skill sets for the professional marketplace including literacy in the computer, mathematical, physical and biological sciences, as well as the traditional liberal arts disciplines.

The School of Management, established in 1988, combines the best of the traditional business disciplines (e.g., finance, marketing, accounting, e-commerce) with the power of information and technology management to develop professionals who can manage and communicate effectively.

The Albert Dorman Honors College, established in 1993, offers one of the nation's leading technologically oriented honors programs for students who are prepared to undertake a rigorous and individualized course of study.

The College of Computing Sciences, established in 2001, encompasses a department of computer science, focused on both the theoretical areas of computing and the development of new computer technology, as well as a department of information systems, concentrated on applications involving people and organizations.

Below: NJIT's clock tower.



NJIT: NEW JERSEY'S TECHNOLOGICAL RESEARCH UNIVERSITY

NJIT plays a critical role in shaping New Jersey's future. As a major public technological university, NJIT is an important conduit through which technology flows into society. The university's educational programs prepare students to be leaders in the technology-dependent economy of the 21st century. University researchers seek new knowledge to improve processes and products for industry. Through public and private partnerships and economic development efforts, the university hopes to grow new business ventures that fuel the economy.

In addition to its degree programs, the university offers a full spectrum of resources in technological specialties including:

- *enrichment programs for professionals through the Division of Continuing Professional Education.*
- *programs designed to attract elementary and high school students through careers in technology.*
- *extensive eLearning courses.*
- *selected courses available at locations throughout New Jersey.*

A strong applied research program is the very core of the technological research university, generating the

advances that fuel a knowledge-based economy. NJIT's research programs have grown exponentially over the past 25 years, from a total expenditure of \$500,000 in 1978 to more than \$75 million today. The university conducts cutting-edge applied research through multidisciplinary centers of excellence, specialized high-tech labs, and partnerships with industry to develop commercially promising new technologies.

NJIT is committed to economic development for Newark, New Jersey, and the region. The university operates several outreach centers that provide direct technical assistance to the state's businesses with the goal of

helping small and medium-sized companies become more productive, profitable, and globally competitive.

NJIT is also the home of New Jersey's oldest and largest incubator facility, and was one of the first institutions in the nation to adopt economic development as a fourth mission element. The university's research centers work in collaboration with corporate partners to speed technology transfer, and numerous outreach programs help businesses become more productive. Extensive initiatives in transportation research based at the university focus on the infrastructure New Jersey needs for a thriving economy.

NEWARK: THE RENAISSANCE CITY

NJIT is located in the heart of New Jersey's largest city. A major urban center, Newark is a city on the move. Some 30,000 undergraduate, graduate and professional students attend classes in University Heights at the city's four public institutions of higher learning: NJIT, Rutgers-Newark, the University of Medicine and Dentistry of New Jersey, and Essex County College.

Attractions in Newark's revitalized downtown include:

- *The Newark Museum*
- *New Jersey Performing Arts Center*
- *The Newark Public Library*
- *Symphony Hall*
- *Branch Brook Park*
- *Art galleries, dining and shopping*
- *An urban architectural laboratory*
- *Professional minor league baseball (Newark Bears)*

NEWARK: NEW JERSEY'S COLLEGE TOWN

Adjacent to NJIT is the Newark campus of Rutgers University.

NJIT and Rutgers enjoy an exceptionally close and productive consortia relationship within the thriving University Heights section of Newark. NJIT and Rutgers students have library privileges at both campuses. NJIT students may also enrich their educational experience by enrolling in Rutgers-Newark courses and in full degree programs in disciplines not offered at NJIT, such as art, music, geology and psychology.

Each year the two universities co-sponsor a common season of theatrical productions, as well as 'World Week,' a joint program of honors colloquia, and a variety of other cultural and social activities.

NEW JERSEY/ NEW YORK METROPOLITAN REGION

The NJIT campus is in one of the nation's most exciting cultural and business regions. Advantages include:

- *Minutes from New Jersey Performing Arts Center, Liberty Science Center, Meadowlands Sports Complex, Manhattan and all of its attractions, Newport Center Mall, and Secaucus Outlet Center.*
- *Discount tickets for Broadway shows, museums, concerts, and sporting events.*
- *Weekend trips throughout the Northeastern United States: skiing, boating, swimming, hiking, and much more.*
- *The spectacular Jersey shore is less than one hour away.*

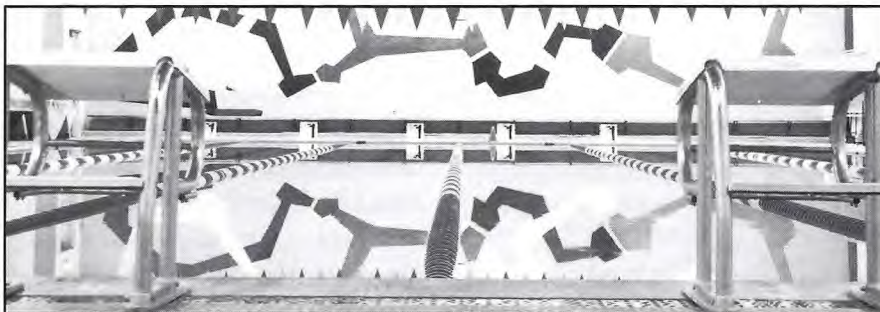
The NJIT soccer teams play their home games at Lubetkin Field, a lighted campus facility, with a newly-installed SprinTurf surface, adjacent to the Estelle and Zoom Fleisher Athletic Center.



Lubetkin contains a scoreboard and pressbox facilities and has bleacher seating for approximately 1,000 spectators. Lubetkin is also used for club sports and intramural events, as well as by the NJIT baseball team for practice.

The soccer teams also have access to all of the other facilities in the athletic center. These include the fitness area (containing computer-controlled biking equipment, Cybex resistance units, and an indoor track), a free-weight room and a hammer-strength weight room, four racquetball courts (which can be converted for squash), a martial arts center, and an aerobics/dance studio.

The NJIT men's and women's basketball and volleyball teams play their home games in Entwisle Gymnasium,



the main facility in the Fleisher Center. Entwisle seats approximately 1,500 spectators. The back bay, 'C gym,' area can be sectioned off from the main floor, making the entire gymnasium useful for intramurals, physical education classes, and campus recreation time, and able to host multiple events simultaneously.

A six-lane swimming pool is home to NJIT's men's and women's swimming teams, while the two varsity tennis squads utilize the four lighted outdoor hardcourt tennis courts behind the building. The newly-renovated Campus Center houses six regulation bowling lanes.

Bears & Eagles Riverfront Stadium in downtown Newark, the facility of the Newark Bears of the Atlantic League, became the home of the Highlanders baseball squad in 2004.

NJIT offers several club sports, including cricket, judo, men's lacrosse, and track and field, plus a full intramural program.

Each NJIT student must pass two physical education classes as a graduation requirement. Offerings include aerobics, archery, bowling, dance, fencing, golf, karate, swimming, skiing, strength training and conditioning, volleyball and water safety.



Top: Fleisher Pool. Above left: Fleisher fitness center. Above: Hammer-strength weight room.



MetroStars Stadium

"The MetroStars plan to build a \$92.2 million stadium that would give the Major League Soccer club a home of their own.... the team, expects the new 20,000-seat venue to open in June 2007. "

Newark/New Jersey Devils Arena

"Officials from both the city of Newark and the New Jersey Devils....unveiled the design for the long-awaited Newark/New Jersey Devils Arena. The facility is being planned as the centerpiece of the city's Downtown Core Redevelopment Project."

The proposed 17,000-plus seat, 700,000 square-foot arena is scheduled to be ready for the 2007 season.



A new 800 bed housing facility is being constructed adjacent to the university. It is scheduled for opening in the Fall of 2006.

Most Games - Career

59	Jennifer Herrera	2000, 2002-04
57	Sarah Buchala	2001-04
50	Jayna Misiunas	2002-04
49	Jillian Misiunas	2002-04
48	Erin Salgado	2002-pres.
46	Daisy Calderon	2000-01, 03
45	Karisa Solt	2001-2003

Most Games - Season

18	Sarah Buchala	2003
	Maura Finn	2003
	Lisa Kling	2003
	Jillian Misiunas	2003
	Erin Salgado	2003

Most Goals - Career

13	Cathy Wasko	2001
12	Karina Merchan	2001-02
11	Erin Salgado	2002-pres.
9	Jillian Misiunas	2002-pres.
8	Daisy Calderon	2000-01, 03
	Vallerie DeAngelis	2000
7	Anna Tomczak	1999-2001
	Mary Caron	1998-99
6	Erika Taugher	2004-pres.
	Jillian Misiunas	2002-04
5	Sarah Buchala	2001-04
4	Maura Finn	2003-04
	Lisa Kling	2003
	Jessi Wilkinson	2001

Most Goals - Season

13	Cathy Wasko	2001
12	Karina Merchan	2001
8	Vallerie DeAngelis	2000
6	Erika Taugher	2004
5	Erin Salgado	2002
	Daisy Calderon	2001
	Anna Tomczak	2001
4	Maura Finn	2003
	Lisa Kling	2003
	Jessi Wilkinson	2001
3	7 tied	

Most Goals - Game

5	Cathy Wasko vs. Mount St. Vincent	9/7/01
4	Karina Merchan vs. St. Elizabeth	10/15/01

Most Assists - Career

10	Jayna Misiunas	2002-04
	Karina Merchan	2001-02
9	Cathy Wasko	2001
8	Anna Tomczak	1999-2001
7	Jillian Misiunas	2002-04
	Sarah Buchala	2001-04
6	Erin Salgado	2002-pres.
5	Erika Taugher	2004-pres.
4	Linda Flores	2000-01
3	Daisy Calderon	2000-01, 03
	Jean Go	2002
	Jessi Wilkinson	2001
	Vallerie DeAngelis	2000

Most Assists - Season

9	Cathy Wasko	2001
7	Karina Merchan	2001
6	Jayna Misiunas	2003

5	Erika Taugher	2004
	Sarah Buchala	2001
4	Erin Salgado	2003
	Jillian Misiunas	2002
	Linda Flores	2001
	Anna Tomczak	2000
3	7 tied	

Most Assists - Game

4	Cathy Wasko vs. St. Elizabeth	10/15/01
---	-------------------------------	----------

Most Points - Career

35	Cathy Wasko	2001
34	Karina Merchan	2001-02
28	Erin Salgado	2002-pres.
27	Jillian Misiunas	2002-04
22	Anna Tomczak	1999-01
19	Vallerie DeAngelis	2000
17	Erika Taugher	2004-pres.
	Sarah Buchala	2001-04
16	Jayna Misiunas	2002-04
15	Daisy Calderon	2000-01, 03
12	Mary Caron	1998-99

Most Points - Season

35	Cathy Wasko	2001
31	Karina Merchan	2001
19	Vallerie DeAngelis	2000
17	Erika Taugher	2004
13	Daisy Calderon	2001
	Anna Tomczak	2001
11	Erin Salgado	2002
	Jessi Wilkinson	2001
10	Erin Salgado	2003
	Jillian Misiunas	2002
9	Maura Finn	2003
	Sarah Buchala	2001

Most Points - Game

10	Cathy Wasko	
	vs. Mt. St. Vincent (5g 0a)	9/7/01
8	Karina Merchan	
	vs. St. Elizabeth (4g 0a)	10/15/01

Most Shots - Season

64	Cathy Wasko	2001
----	-------------	------

Most Shots - Game

15	Erin Salgado vs. Mt. St. Vincent	10/7/02
----	----------------------------------	---------

Most Games as Goalkeeper - Career

38	Daisy Calderon	2000-01, 03
----	----------------	-------------

Most Solo Shutouts - Season

4	Daisy Calderon	2003
---	----------------	------

Most Saves - Career

296	Daisy Calderon	2000-01, 03
-----	----------------	-------------

Most Saves - Season

167	Daisy Calderon	2000
155	Kate Crowley	1999
152	Kate Duncan	2002

Most Saves - Game

27	Ketsia Mesidor vs. Bridgeport	9/17/97
----	-------------------------------	---------

Most Goalkeeper Wins - Career

10	Daisy Calderon	2000-01, 03
6	Joy Intasamakul	2001

Most Goalkeeper Wins - Season

5	Daisy Calderon	2003
4	Joy Intasamakul	2001

MISCELLANEOUS INDIVIDUAL RECORDS

Most Hat Tricks, Career:

2, Cathy Wasko, 2001

Most Hat Tricks, Season:

2, Cathy Wasko, 2001

Most Game Winning Goals, Career:

3, Cathy Wasko and Erika Taugher, 2004

Most Game Winning Goals, Season:

3, Cathy Wasko and Erika Taugher, 2004

Fastest Two Goals: 1:23, Dinah Kotei at New Jersey City, 9/7/02

Fastest Three Goals: 12:20, Cathy Wasko vs. CCNY, 10/1/01

Longest Goal-Scoring Streak:

3, Cathy Wasko, 2001 and Jessi Wilkinson, 2001

Longest Point-Scoring Streak: 3, five times

TEAM RECORDS

Most Victories: 6, 2001

Fewest Losses: 9, 2001

Most Ties: 1, 2003 and 2004

Best Winning Percentage: .400, 2001

Most Consecutive Victories:

2, Sept. 17-19, 2001 and Oct. 21-23, 2002 and Oct. 13-16, 2004

Most Shutouts: 4, 2001 and 2003

Most Consecutive Shutouts: 2, 2002

Most Goals, Game: 9 vs. CCNY, 10/1/01

Most Shots, Game:

50 vs. Mount St. Vincent, 10/6/04

Most Goals, Season: 43, 2001

Fewest Goals Allowed, Season: 35, 2004

Fastest Two Goals: 0:47 at Delaware State, 10/17/03 (Erin Salgado, Maura Finn)

Fastest Three Goals: 5:23 vs. CCNY, 10/1/01 (Cathy Wasko 2, Karina Merchan)

Fastest Goal From Start of Game:

3:15 vs. Mercy, 9/8/03 (Maura Finn)

All-Time All Conference

Women's Intercollegiate Athletic Conference

1996 Wendy Gruenewald,
Natalie Rogriguez, Maiysha Ware

Independent Athletic Conference

1996 Natalie Rodriguez

Central Atlantic Collegiate Conference

2000 Vallerie DeAngelis (HM)
2002 Erin Salgado (HM)

National Statistical Leader

2000 Daisy Calderon, saves per game

1996 (0-11)

MT. ST. VINCENT	L	2-3
St. Joseph's (LI)+	L	
at Allentown	L	0-1
at Molloy	L	0-9
10/2 STEVENS TECH+	L	0-3
At Allentown (ot)	L	0-1
at St. Elizabeth	L	0-4
at FDU-Madison	L	0-3
at Centenary (NJ)	L	0-9
at Nyack	L	0-4
at Bloomfield	L	0-3

*WIAC

+IAC

Coach: Dan Kilday

1997 (0-13)

9/2 at Nyack	L	0-11
9/6 at Adelphi*	L	0-14
9/14 at Albany	L	0-8
9/17 BRIDGEPORT	L	0-8
9/24 at Bloomfield	L	
9/30 PHILA. TEXTILE*	L	1-10
10/4 ST. ROSE*	L	0-5
10/11 SOUTHAMPTON*	L	
10/15 at St. Thomas Aquinas	L	
10/18 at Molloy*	L	0-12
10/24 C.W. POST*	L	0-5
10/26 at New York Tech*	L	0-16
11/1 at Concordia (NY)*	L	0-7

*NYAC (0-8)

Coach: Ralph Choonoo

1998 (0-10)

9/12 BLOOMFIELD	L	0-5
9/16 at C.W. Post*	L	0-13
9/20 ST. THOMAS AQUINAS	L	0-5
9/26 at St. Rose*	L	0-13
10/9 at Molloy*	L	0-8
10/14 NEW YORK TECH*	L	0-8
10/17 CONCORDIA (NY)*	L	0-4
10/21 ADELPHI*	L	fft.
10/24 at Southampton*	L	0-8
10/31 PHILA. TEXTILE*	L	0-14

*NYCAC (0-8)

Coach: Jean Pierre

1999 (1-10)

9/11 CALDWELL	L	1-8
9/13 at Molloy*	L	0-10
9/23 at Bloomfield	W	2-1
9/26 ST. ROSE*	L	0-12
9/29 at Queens (NY)*	L	0-6
10/9 at Concordia (NY)*	L	0-8
10/14 SOUTHAMPTON*	L	0-6

10/17 at Adelphi*	L	1-7
10/23 C.W. POST*	L	0-21
10/25 PHILADELPHIA*	L	1-13
10/30 at New York Tech*	L	0-9

*NYCAC (0-9)

Coach: Tom Romano

2000 (3-13)

9/11 QUEENS (NY)	L	0-5
9/13 TEIKYO POST*	L	0-6
9/16 at Concordia (NY)	L	1-3
9/18 at Bloomfield* (ot)	L	1-2
9/21 CONCORDIA (NY)	L	0-2
9/25 at Mercy	L	1-2
9/27 GEORGIAN CT.*	L	0-7
9/30 at Holy Family*	L	0-8
10/2 MT. ST. VINCENT	W	3-1
10/4 at Dominican (NY)*	L	0-7
10/7 WILMINGTON* (ot)	W	2-1
10/11 at Caldwell*	L	0-5
10/14 FELICIAN*	L	0-3
10/16 at Mt. St. Vincent	W	6-0
10/18 NYACK*	L	0-4
10/22 at Goldey-Beacom*	L	0-8

*CACC (1-9)

Coach: Tom Romano

2001 (6-9)

9/7 at Mt. St. Vincent	L	2-3
9/10 MERCY	W	4-2
9/17 PHILA. BIBLICAL	W	1-0
9/19 at Bloomfield*	L	3-4
9/22 at Teikyo Post*	W	4-2
9/26 at Nyack*	L	-10
9/29 HOLY FAMILY*	W	7-0
10/1 CCNY	W	7-0
10/3 GOLDEY-BEACOM*	W	7-0
10/5 GEORGIAN COURT*	W	4-1
10/10 at Dominican (NY)*	W	7-0
10/15 ST. ELIZABETH	W	7-0
10/20 at Wilmington (DE)*	W	7-0
10/22 MT. ST. VINCENT	W	7-0
10/25 FELICIAN*	W	7-0

*CACC (1-8)

Coach: Tom Romano

2002 (4-13)

8/31 at Saint Rose	L	0-8
9/1 vs. Green Mountain	L	0-6
9/7 at New Jersey City	W	3-0
9/11 at Queens (NY)	L	0-2
9/14 at Felician*	L	0-5
9/18 BLOOMFIELD* (ot)	W	3-2
9/21 TEIKYO POST*	L	1-5
10/5 at Georgian Court*	L	1-3

10/7 at Mt. St. Vincent	L	2-4
10/9 DOMINICAN (NY)*	L	0-7
10/14 at Goldey-Beacom*	L	0-8
10/19 WILMINGTON (DE)*	L	0-6
10/21 ST. ELIZABETH	W	3-0
10/23 PURCHASE	W	2-0
10/27 at Holy Family*	L	1-5
10/30 NYACK*	L	2-3
11/1 at Caldwell*	L	0-3

*CACC (1-9)

Coach: Tom Romano

2003 (5-12-1)

9/6	NEW JERSEY CTY (2ot)	T	1-1
9/8	at Mercy	L	1-3
9/10	QUEENS (NY)	L	0-6
9/17	at Bloomfield*	W	3-0
9/20	at Teikyo Post*	L	0-4
9/24	at Nyack*	L	0-5
9/27	HOLY FAMILY*	L	0-6
9/29	at Purchase	L	0-4
10/1	GOLDEY-BEACOM*	L	0-5
10/4	GEORGIAN COURT*	L	0-3
10/6	MT. ST. VINCENT	W	6-0
10/11	CALDWELL*	L	0-6
10/13	FELICIAN*	L	1-5
10/17	at Delaware State	W	5-1
10/18	at Wilmington (DE)*	L	0-8
10/20	at St. Elizabeth (2ot)	W	2-1
10/24	at Dominican (NY)*	L	0-5
10/25	PHILA. BIBLICAL	W	2-0

*CACC (1-9)

Coach: Tom Romano

2004 (5-10-1)

8/29 ST. ANSELM COLLEGE	L	0-8
9/4 NYIT	L	0-3
9/8 at Felician*	L	2-3
9/11 at Georgian Court	T	0-0
9/15 BLOOMFIELD*	W	1-0
9/25 at Holy Family*	L	0-5
9/27 TEIKYO POST*	W	1-0
9/29 at Golden Beacom*	L	0-3
10/6 DOMINICAN (NY)*	L	0-2
10/9 at Caldwell*	L	0-2
10/13 at NJCU	W	5-1
10/16 MERCY	W	1-0
10/17 COLLEGE OF ST. ROSE	L	0-1
10/20 WILMINGTON (DE)*	L	0-4
10/23 NYACK* (NJIT DAY)	L	1-2
10/31 PURCHASE	W	4-1

*CACC (2-7)

Coach: Alyssa Radu

ALL TIME RECORDS VS. OPPONENTS

Adelphi.....	0-3
Albany (NY)	0-1
Allentown.....	0-2
Bloomfield	5-4
Bridgeport.....	0-1
Caldwell	0-5
Centenary (NJ)	0-1
CCNY	1-0
Concordia (NY)	0-5
C.W. Post	0-3
Delaware State.....	1-0
Dominican (NY)	0-5
Drexel	0-0
FDU-Madison	0-1
Felician	0-5
Georgian Court	0-4-1
Goldey-Beacom	0-5
Green Mountain	0-1
Holy Family	0-5
Mercy	1-3
Molloy	0-4
Mount St. Vincent.....	5-2
NYIT	0-4
New Jersey City	2-0-1
Nyack.....	0-7
Philadelphia	0-3
Philadelphia Biblical	2-0
Post University	1-4
Purchase	2-1
Queens (NY)	0-4
St. Anselm	0-1
St. Elizabeth	3-1
St. Joseph's-Patchogue	0-1
St. Rose	0-5
St. Thomas Aquinas	0-2
Southampton	0-3
Stevens Tech	0-1
Wilmington (DE).....	1-4
TOTAL	24-101-2

2005 opponents in **bold**

Note: The information on these pages is as complete as possible based on available information. Any items left blank are not on file. Anyone with documentable corrections/additions to these items is asked to contact the sports information office at (973) 596-8324.



— A —

ALVAREZ, Janina 97,98
ARMSTRONG, Tama 96
AUGUSTINE, Joann 96
AWOKE, Hiywote 96,97,98,99

— B —

BABUCHIWSKI, Dorothy 03
BALLOU, Nicole 99
BARRETO, Michelle 00,01
BAYIOKOSL, Amanda 04
BECKER, Melissa 97,98
BHANDERI, Nilam 97,98,99
BUCHALA, Sarah 01,02,03, 04

— C —

CALDERON, Daisy 00,01,03
CARON, Mary 98,99
CHOY, Yvonne 96,97,98
CLOVIS, Darlene 00
CORREA, Claudia 03
CROWLEY, Kate 99
CUBIAS, Marina 96

— D —

DeANGELIS, Vallerie 00
DORN, Jennifer 00,01
DUNCAN, Kate 02, 04

— E —

ELLIOT, Laura 96,97

— F —

FARROW, Ann 96
FINN, Maura 03, 04
FLORES, Linda 00,01

— G —

GO, Jean 02
GOLDMAN, Alexis 97,98,99,00



GOUGH, Heather 01
GRIFFITHS, Nadia 97,98,99
GRISWOLD, Kimberly 02
GRUENEWALD, Wendy 96
GUARDADO, Luisa 99
GUISHARD, Corina 02

— H —

HENRY, Margarette 96,97,98
HEPFINGER, Katie 04
HERMAN, Susan 97,98
HERNANDEZ, Heather 00
HERRERA, Jennifer 00,02,03,04
HORDYNSKY, Natalie 01
HOUSER, Leila 99,00
HOWE, Rebecca 00

— I —

INTASAMAKUL, Joy 01,02

— J —

JOY-WAY, Alida 96,98

— K —

KLING, Lisa 03
KOTEL, Dinah 02

— L —

LARGE, Katie 99
LEIBEL, Katie 01
LEICHTNAM, Elizabeth 02,03,04
LEMARIE, Linda 97,98,99

— M —

MACAULAY, Keri-Anne 04
MACIAS, Stephanie 04
MAKLOUFI, Keltoum 99
MARTINEZ, Dolores 00
MAYFIELD, Taekia 00
MENDOZA, Monica 00
MERCHAN, Karina 01,02
MESIDOR, Ketsia 96,97,98
MEVS, Carmina 99,00
MISIUNAS, Jayna 02,03, 04
MISIUNAS, Jillian 02,03, 04

MOVING, Lisa 97,98

— O —

OBAZENU, Veta 99
O'CONNOR, Jackie 99
OSSA, Ana 03

— P —

PATEL, Lali 98
PATEL, Sushreeta 97
POSSIBLE, Vicki 96,97,98
PHILLIPS, Marie 98,99

— R —

RAMIREZ, Magda 99
RAPATSKI, Brandi 96
REEBER, Lisa 99
REYNOLDS, Leigh 04
RIBELIN, Nettie 00,01
RIVERA, Betty 99,00
RIVIRIEGO, Sheila 99
RODRIGUEZ, Natalie 96,97,98,99
ROMANO, Mary Kate 02

— S —

SALGADO, Erin 02,03,04
SIMEON, Verdane 96
SMITH, Patricie 99
SOLT, Karisa 01,02,03
SOLU, Alyn 96,97,98
STOLTZ, Heather 96

— T —

TALAI, Mina 03
TAUGHER, Erika 04
TOMCZAK, Anna 99,00,01
TUDOR, Lauren 99

— W —

WALLACE, Leah 96,98,99
WARE, Maiysha 96,97,98
WASKO, Cathy 01
WHITWORTH, Elaine 01
WHITWORTH, Elizabeth 01
WIELAND, Rachel 96
WILKINSON, Jessi 01
WU, Peychi 97,98,99

— Z —

ZAMBRANO, Claudia 97,98
ZIEMBA, Melissa 96

WOMEN'S SOCCER YEAR-BY-YEAR

Year	Record	Conference	Postseason	MVP	Captains
1996	0-12	WIAC, IAC	--	Natalie Rodriguez	N/A
1997	0-13	NYCAC (0-8, 9th)	--	Janina Alvarez	N/A
1998	0-10	NYCAC (0-8, 9th)	--	Natalie Rodriguez	N/A
1999	1-10	NYCAC (0-9, 10th)	--	Veta Obazenu	none
2000	3-13	CACC (1-9, T-10th)	--	Daisy Calderon	Anna Tomczak
2001	6-9	CACC (1-8, T-9th)	--	Cathy Wasko	Anna Tomczak
2002	4-13	CACC (1-9, 10th)	--	Erin Salgado	Sarah Buchala, Erin Salgado
2003	2-12-1	CACC (1-9, T-10th)	--	Lisa Kling	Sarah Buchala, Erin Salgado
2004	5-10-1	CACC (2-7)	--	Katie Hepfinger	Sarah Buchala, Kate Duncan, Erin Salgado

By Car

Garden State Parkway (GSP): Take Exit 145 to Route 280 East, then follow Route 280 East directions.

New Jersey Turnpike: Take Exit 15W to Route 280 West, then follow Route 280 West directions.



Route 280 West: After drawbridge, take Exit 14B (Broad Street/King Blvd.). At bottom of exit ramp, make a left. Go one block to stop sign. Make a left on King Blvd. Go five lights to Warren Street. Make a right on Warren Street. Go two blocks to Colden Street. Make a left on Colden Street. Follow signs to NJIT Parking Deck.

Route 280 East: Take Exit 13 (First Street/Newark). At light, make a right on First Street. Go three lights to W. Market Street. Make the soft left on W. Market Street. Go four lights to King Blvd. Make a left on King Blvd. Go one light to Warren Street. Make a left on Warren Street. Go two blocks to Colden Street. Make a left on Colden Street. Follow signs to NJIT Parking Deck.

Route 1 & 9 North & South: Take exit marked Newark, Route 21 (McCart Highway). Cross bridge. At light at end of bridge, make quick left then quick right for Broad Street. (There are clear signs for Broad Street) Go about 1 mile. Make a left on Court Street. Make a right at third light on King Blvd. Make a left at fifth light on Warren Street. Go two blocks to Colden Street. Make a left on Colden Street. Follow signs to NJIT Parking Deck.

Route 78: Take Route 78 to the Garden State Parkway. Follow GSP directions.

Route 22: Take Route 22 to Route 21 North. Follow directions for Route 21 North.

Route 21 North: Turn left onto Raymond Boulevard. When Raymond Boulevard turns into Lock Street, turn right onto Warren Street. Turn right onto Colden Street and follow signs to the NJIT parking deck.

Route 21 South: From 21 South, turn right on Bridge Street. Turn left on Broad Street. Go one block and turn right on Washington Place. Go one block and turn left on Halsey Street. Go one block and turn right on Central Avenue. Make the third left on King Blvd. At first light, turn right on Warren Street. Go two blocks to Colden Street. Make a left on Colden Street. Follow signs to NJIT Parking Deck.

New York Thruway: Thruway to Exit 14A, Garden State Parkway. Follow GSP directions above.

George Washington Bridge: NJ Turnpike South to Exit 15W. Follow Route 280 West directions above.

Lincoln Tunnel: West on Route 3 to NJ Turnpike South to Exit 15W. Follow Route 280 West directions above.

From Brooklyn, Queens & Long Island: Take Verrazano-Narrows Bridge (Interstate 278) and follow 278 across Staten Island. Cross Goethals Bridge. Follow signs to New Jersey Turnpike North then follow New Jersey Turnpike directions above.

Other Transportation Systems

Newark International Airport: Five miles from the NJIT campus. A minibus (Newark Airlink) or taxi service connects the airport with Penn Station in Newark. Bus, city subway, and taxi connections may be obtained at the station.

Newark Penn Station: Connections to the NJIT campus may be made by bus, city subway, or taxi.

Morris & Essex Broad Street Station: A five-block walk to the NJIT campus via King Boulevard to Central Avenue. Taxi service is also available

Newark City Subway: From Penn Station in Newark, take the Warren Street stop for the NJIT campus.

Downtown Hotels

Comfort Suites

1348 McCarter Highway, Newark
973/481-5200

Hampton Inn & Suites Newark Riverwalk

100 Passaic Avenue, 973/483-1900

Hilton Newark Gateway

Gateway Center, Raymond Blvd. & McCarter Highway, 973/622-5000

Robert Treat Hotel

50 Park Place, Newark, 973/622-1000

Hotels Near Newark Airport

Best Western Newark Airport West

101 International Way, Newark
973/621-6200

Courtyard by Marriot Newark Liberty International Airport

600 Route 1 & 9, Newark, 973/643-8500

Days Inn Newark

450 Rt.1 South (near Haynes Ave.), Newark
973/242-0900

Fairfield Inn & Suites Newark Liberty International Airport

618 Rt.1 & 9 South, Newark
973/242-2600

Four Points by Sheraton Newark Airport

901 Spring St., Elizabeth, 908/527-1600

Hampton Inn Newark Airport

1128-38 Spring St., Elizabeth
908/355-0500

Hilton Newark Airport

1170 Spring St., Elizabeth
908/351-3900

Holiday Inn Newark Liberty International Airport

160 Frontage Rd., Newark, 973/589-1000

Newark Liberty International Airport Marriott

Newark Liberty International Airport, Newark, 973/623-0006

Ramada Inn Newark Liberty International Airport

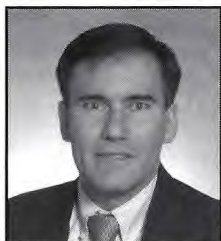
550 Rt.1 & 9 South, Newark
973/824-4000

Sheraton Newark Airport Hotel

128 Frontage Rd., Newark
973/690-5500

Wyndham Newark Airport

1000 Spring St., Elizabeth, 908/436-4600



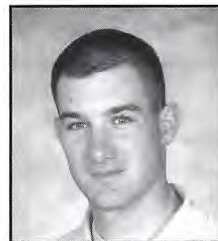
Adalberto M. Alonso
Head M/W Cross-Country
(973) 596-3636
alonso@njit.edu



Phil Baboulis
Head Women's Tennis
Head Men's Tennis
(973) 596-3636
pbtennis@optonline.net



Joe Caiola
Asst. Director of Athletics/
Business & Facilities
(973) 642-7224
caiola@adm.njit.edu



Brian Callahan
Head Baseball
(973) 596-5827
callahan@njit.edu



Tim Camp
Asst. Director of Athletics
Sports Information
(973) 596-8324



Jim Casciano
Asst. Director of Athletics/
Head Men's Basketball
(973) 596-5727
casciano@adm.njit.edu



Dr. Roy Cornely
Faculty Athletics Rep.
(973) 596-3537
cornely@adm.njit.edu



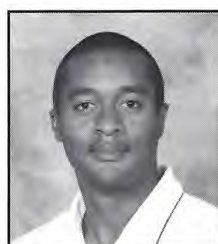
Duane Felczak
Asst. Director of Phys. Ed.
(973) 596-3637
felczak@adm.njit.edu



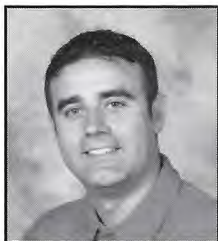
Damien Franolich
Asst. Athletic Trainer
(973) 596-3623



Lenny Kaplan
Director of Athletics
(973) 596-3636
kaplan@adm.njit.edu



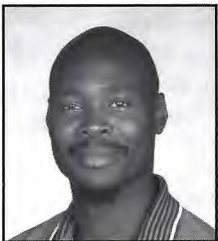
Kevin Leacock
Operations Manager
(973) 596-3636



Pedro Lopes
Head Men's Soccer
(973) 596-5219
pedro.j.lopes@njit.edu



Kim Bowen Lusk
Asst. Dir. of Athletics
Head Women's Basketball
(973) 596-3633
bowen@adm.njit.edu



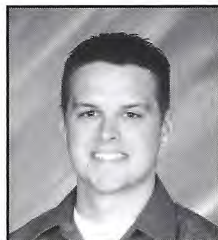
Ryan McNeil
Head Men's Volleyball
Interim Head Women's Volleyball
Co-Intramural Director
(973) 596-5380



Alyssa Radu
Head Women's Soccer/SWA
(973) 596-2928
radu@adm.njit.edu



Jonathan Walker
Front Desk Attendant
Equipment Specialist
(973) 596-5730



Tim Wuorinen
Asst. Director of Athletics/
Compliance & Eligibility
(973) 596-5278
wuorinen@adm.njit.edu

NJIT Alumni Athletic Hall of Fame

Name	Grad. Year	Contribution	Sport(s)	Years	Year of Induction
BAUDER, Fred "Coach"	--	Coach	M-Basketball	1932-61	1989
BAKUN, Andrew I.	1982	Athlete	M-Soccer	1978-81	2005
		Asst. Coach	M-Soccer	1990-91	
BAKUN, Myron	1967	Athlete	M-Soccer	1964-66	1991
BLUM, Raymond E.	1950	Distinguished Alum.	Speedskating/Cycling	--	1996
BORJA, Hernan "Chico"	1981	Athlete	M-Soccer	1977-80	1986
BORNAKO, Gregory "Egor"	1970	Athlete	M-Fencing	1966-70	1987
BOWSER, Hamilton V.	1952	Athlete	M-Fencing	1948-52	1989
BRADLEY, Thomas	1978	Athlete	M-Swimming	1974-78	1990
CRUZ, Edward	1963	Athlete	M-Soccer	1959-62	1995
DAWSON, Marilyn E.	1986	Athlete	WVB/WBKB/SB	1982-86	1991
DeNICOLA, Carmine P.	1978	Athlete	Baseball	1975-78	2005
DeVITO, Louis	1960	Athlete	M-Soccer/M-Fencing	1956-60	1992
DIAS, Joe A.	1977	Athlete	M-Soccer	1973-76	1993
DRURY, Eugene M.	1963	Athlete	M-Tennis	1960-63	1988
ETIENNE, Yves	1979	Athlete	M-Volleyball	1976-78	1990
FEHN, Gilbert F.	1940	Athlete	M-Basketball/M-Tennis	1936-40	1992
FITZGERALD, Joseph M.	--	Coach	M-Basketball	1961-66	1986
		Asst. Coach	M-Basketball	1952-61	
FLEISHER, Seymour "Zoom"	1951	Athlete	M-Basketball	1947-51	1992
GAGLIARDO, Salvatore A.	1985	Athlete	M-Basketball	1981-85	1995
GALLAGHER, Thomas G.	1985	Athlete	M-Basketball	1981-85	1991
GIOVANNOLI, Arnold L.	1953	Athlete	M-Basketball	1950-53	1993
GOLDRICK PITT, Elizabeth M.	1990	Athlete	WVB/SB/WBKB/WTen	1985-90	1995
GRUENEWALD, Wendy A.	1997	Athlete	WBKB/SB/WVB/WSoc	1992-96	2003
HAASE, Jay W.	1975	Athlete	M-Fencing	1971-75	1988
HAMMOND, Kenneth W.	1979	Athlete	M-Soccer	1974-77	2003
HANDWERKER, Andy	1963	Athlete	M-Soccer	1959-62	2002
HAUSSER, Paul C.	--	Administrator	--	1953-91	1990
		Coach	Fencing	1954-88	
		Coach	Baseball	1953-72	
HUBEY, Ali	1972	Athlete	M-Soccer	1968-71	1990
HURTADO, Fabian	1975	Athlete	M-Soccer	1970-73	1987
KASBARIAN, Raymond P.	1966	Founder/Athlete	Judo	1962-66	1989
KETZNER, Robert Shelby	--	Coach	Rifle	1962-86	1987
KHOWAYLO, Alex	1969	Athlete	M-Soccer	1960-63	1996
LUBETKIN, Charles "Tudy"	1953	Athlete	M-Basketball/M-Track	1949-52	1994
LYNCH, Robert K.	1984	Athlete	M-Fencing	1977-80	1993
		Coach	M-Fencing	1986-91	
MacDONALD, Dan	1984	Athlete	Baseball	1981-84	1991
OLSEN, Richard J.	1969	Athlete	M-Basketball	1965-69	1988
OLSON, George R.	1977	Athlete	Baseball	1974-77	1987
ROGERS, Warren E.	1988	Athlete	M-Basketball	1983-87	1993
ROMULUS, Rudy	1991	Athlete	M-Volleyball	1988-91	1996
SARLO, Paul A.	1992	Athlete	Baseball	1989-91	2005
SCHMID, John "Gene"	--	Coach	Baseball	1973-97	2002
		Asst. Coach	Baseball	1968-72	
SIMON, J. Malcolm	--	Coach	M-Soccer	1955-83	1994
		Athletics Director	--	1983-94	
SKURLA, Peter J.	1941	Athlete	Bowling	1937-41	1992
SWANSON, Robert F.	--	Athletics Director	--	1947-82	1986
TOSATO, Lawrence P.	1956	Athlete	M-Basketball/Baseball	1952-56	1987
TUBELLO, Jeffrey	1976	Athlete	Rifle	1972-76	1988
VAN WRIGHT	1997	Athlete	W-Basketball	1991-96	2005
WALSH, John J.	1966	Athlete	MSoc/MBKB/Baseball	1962-66	1986
WASNIEWSKI, Frank	1980	Athlete	M-Tennis	1977-80	1990
WELGOS, Bob	1962	Athlete	M-Basketball/Bowling	1959-62	2005
WOROBEC, Myron S.	1966	Athlete	M-Soccer	1962-65	1994
YONEZUKA, Yoshisada	--	Founder/Coach	Judo	1962-??	1991
ZORN, Werner	1962	Athlete	M-Soccer	1958-61	1988
1960 Men's Soccer Team		NAIA co-national champion 1988			
1981-82 Men's Basketball Team		NJIT's first ECAC and IAC champion 1990			
1982 Baseball Team		NJIT's second ECAC and IAC champion 1993			



When NJIT reclassified its athletics programs to NCAA Division II from Division III in 1997, it joined the New York Collegiate Athletic Conference (NYCAC). After three years of NYCAC play, the Highlanders began a new era in the fall of 2000 as members of the Central Atlantic Collegiate Conference (CACC).

For its first two seasons in the league, NJIT was the only CACC school with full NCAA membership. The others were in a provisional period while switching affiliation from the National Association of Intercollegiate Athletics (NAIA). However, six women's soccer-playing institutions completed their provisional requirements in 2002, three more did so in 2003 and Wilmington (Del.) College joined the NCAA fold in 2004. This season, Philadelphia University is in the conference, expanding the CACC's ranks to 12 schools in women's soccer. As a conference, the CACC was voted into active status by the NCAA membership committee in July 2004.

The 2005 season will be the last one in the CACC for NJIT, as the Highlanders begin the two-year single-sport process of reclassifying to NCAA Division I. This season, NJIT will play a full CACC regular season conference slate and individual student-athletes will be eligible for conference honors, as well. As a result of the reclassification, NJIT will not be part of CACC postseason competition. Next season, NJIT will play a Division I schedule.

More information is available at www.caccathletics.org.

CACC OFFICERS

COMMISSIONER: Robert Oliver
ASSISTANT COMMISSIONER: Kirk Reed

PRESIDENT: Sandy Michael, *Holy Family*
VICE-PRESIDENT: Chris Morgan, *Goldey Beacom*

TREASURER: Sheila Wooten, *Bloomfield*
SECRETARY: Keith Davie, *Nyack*

2004 CACC STANDINGS

	CACC	Overall
Wilmington	9-1-0 .900	16-2-0 .889
Holy Family	9-1-0 .900	11-7-0 .611
Caldwell	8-2-0 .800	10-7-1 .583
Dominican	7-2-1 .750	11-5-1 .676
Goldey-Beacom	5-4-1 .550	6-10-2 .389
Nyack	4-5-1 .450	7-10-1 .417
Felician	4-5-1 .450	4-12-1 .265
Georgian Court	2-6-2 .300	4-8-2 .357
NJIT	2-7-1 .250	5-10-1 .344
Teikyo Post	1-8-1 .150	2-15-2 .158
Bloomfield	0-10-0 .000	0-17-0 .000

2004 ALL-CACC SOCCER TEAM

First Team

GK	Jamie Kaiser	Fr	Georgian Court
D	Dana Ayars	So	Wilmington
D	Lindsay Gregoris	So	Caldwell
D	Stacey Ryan	So	Dominican
D	Nicole Scheirer	Sr	Georgian Court
M	Carla Bleiler	Fr	Caldwell
M	Melissa Gamble	So	Holy Family
M	Katie Mazzio	Sr	Wilmington
M	Brianne Redelheim	So	Holy Family
F	Colby Bugda	So	Wilmington
F	Margaret Denman	Sr	Dominican
F	Begum Malali	Fr	Wilmington

Second Team

GK	Amanda Musarra	Fr	Felician
D	Gabrielle Donnelly	Sr	Holy Family
D	Colleen Gregory	So	Holy Family
D	Carrie L'Italien	Sr	Goldey-Beacom
D	Danielle Szymanski	Jr	Wilmington
M	Victoria Aguilera	So	Caldwell
M	Lori Knabb	Jr	Goldey-Beacom
M	Jill Smith	Sr	Dominican
F	Jenna Cutts	Jr	Nyack
F	Brook DeLucca	Fr	Caldwell
F	Melissa Samio	So	Wilmington

Player of the Year: Katie Mazzio, *Wilmington*

Newcomer of the Year: Carla Bleiler, *Caldwell*

Coach of the Year: Phil Fluhr, *Dominican*

Team Sportsmanship Award: Bloomfield

Honorable Mention: Keri Dugan, Sr, M, *Dominican*;

Jenna Krowl, Fr, D, *Felician*; Richelle Morse, Jr, GK, *Caldwell*;

Jill Slesinski, Sr, GK, *Dominican*.



The NJIT 2005 Women's Soccer Team

[L to R] Top Row: Kevin Leacock, Tiffany Williams, Katie Hepfinger, Keri-Anne Macaulay, Erin Salgado, Aine O'Dwyer, Dena Baskous, Erika Taugher, Cynthia Bayiokos, Amanda Bayiokos, Stephanie Macias, Alyssa Radu Bottom Row: Briana Morales, Krista Cohen, Joanna Powdhar, Angelica Sepulveda, Emma Vinski, Katie DeRosa, Jackie Bunner

WOMEN'S SOCCER 2005 SCHEDULE

AUGUST

Friday	26	@ Drexel University	4 pm
--------	----	---------------------	------

SEPTEMBER

Sunday	4	ST. ANSELM	1pm
Wednesday	7	FELICIAN *	6:30 pm
Saturday	10	NYIT	Noon
Wednesday	14	BLOOMFIELD *	6:30 pm
Saturday	17	@ Post University *	1 pm
Wednesday	21	@ Nyack *	3:30 pm
Saturday	24	HOLY FAMILY *(DH)(Keeper Wars)	3:00pm
Wednesday	28	GOLDEY BEACOM (DH)*	4:30pm

OCTOBER

Saturday	1	GEORGIAN COURT *	6 pm
Wednesday	5	@ Dominican (NY)*	3:30 pm
Saturday	8	CALDWELL (DH)*NJIT DAY	10:30 am
Saturday	15	DELAWARE STATE	3 pm
Wednesday	19	@ Wilmington (DE)*	3:30 pm
Sunday	23	@ St. Rose (NY)	1pm
Wednesday	26	@ Philadelphia University *	3 pm

Head Coach: Alyssa Radu (Rutgers '01), 2nd year

Central Atlantic Collegiate Conference

DH - Double Header with Men's team

Home games (CAPS) @ Lubetkin Field

Stephanie
Macias
Junior

Keri-Anne
Macaulay
Sophomore