



HIGHLANDERS

NEW JERSEY INSTITUTE OF TECHNOLOGY

2013

Women's

Soccer

NJIT

HIGHLANDERS

NJITHIGHLANDERS.COM





NJIT

2013 Women's Soccer Media Guide



TABLE OF CONTENTS

About NJIT	2-5
University Administration	6-9
Athletics Senior Staff	9
Sports Medicine & Strength and Conditioning ..	10
Academic Enrichment	11
NJIT in Division I	12-13
Athletics Facilities	14-16
About Newark	17
Sports & Entertainment Around Newark ...	18-19
Head Coach Mandi Ridsen	20
Assistant Coaches	21
Roster	22
2012 Statistics and Results	23
School Records	24-25
All-Time Coaching Records	25
Division I Records/Division I Superlatives	26
All-Time vs. Opponents	27
All-Time Conference Honors	27
Year-by-Year	28-30
All-Time Roster	31-32
Hall of Fame	33
Athletic Administration & Coaching Staff ..	34
Directions to NJIT	35

WOMEN'S SOCCER

Head Coach (alma mater, year): Mandi Ridsen (Auburn, 1999)

Phone/Email: 973-596-8239/ ridsen@njit.edu

Career Record: First Season

Assistant Coaches: Erwin van Bennekon (CISCO Academy '02), Katrina Smedley (College of William and Mary '13)

Volunteer Coach: Tim Verschuren (University of The Hague (Haagse Hogeschool) '09)

Captains: Game captains

2012 overall: 4-13-3

GWC record/finish: 2-3-0 (5th)

QUICK FACTS

Location: University Heights, Newark, NJ

Founded: 1881

Enrollment: 10,130 (total)

NJIT website: www.njit.edu

Nickname/colors: Highlanders/red and white (blue accent)

Home Field: Lubetkin Field at Mal Simon Stadium (cap: 1,000; lighted; SprinTurf surface)

Affiliations: NCAA Division I, ECAC

Conference: Independent

University President: Dr. Joel Bloom EdD

Director of Athletics: Lenny Kaplan

Athletic Department Phone: 973-596-3636

WHY THE HIGHLANDERS?

The home of NJIT, University Heights, was formerly known as the Newark Highlands and NJIT's mailing address used to be High Street, until the thoroughfare was renamed in memory of Dr. Martin Luther King, Jr.

In 2006-07, NJIT athletics, in keeping with its move to NCAA Division I, unveiled a new graphic identity, which included a new Highlanders logo. Developed by CN Foundry for NJIT, the logo depicts the traditional Highlander, whose ferocity and bravery against all odds are the stuff of legend.

MEDIA RELATIONS

NJIT Athletics website: www.njithighlanders.com

Assistant AD for Sports Information: Tim Camp

Phone/Email: 973-596-8461/timothy.camp@njit.edu

Assistant SID: Stephanie Pillari

Phone/Email: 973-596-8324/pillari@njit.edu

MEDIA INFORMATION

This guide is designed to assist in coverage of NJIT women's soccer. For home matches, the NJIT sports information office will provide an official box score following each game. Coach Mandi Ridsen and requested players will be available for interviews on the field following a 10-minute cooling off period. Radio broadcast requests should be made at least 10 business days prior to the contest. Requests for coach and player interviews on nongame days should be made through the NJIT sports information office (973-596-8461).

CREDITS

The 2013 NJIT Women's Soccer Media Guide is a production of the NJIT Sports Information Office in cooperation with the Office of Strategic Communications. Written and edited by Tim Camp and Stephanie Pillari. Cover and interior design by Karyn Olsen. NJIT photographs and information courtesy of Office of Strategic Communications. All interior team and action photography by Larry Levanti. Red Bull Arena photo (p. 17) courtesy of Getty Images/RBNY.

About NJIT

NJIT is New Jersey's Science & Technology University. With roots going back to 1881, when it was founded as Newark Technical School, New Jersey Institute of Technology observed its 125th anniversary in 2006.

Located in University Heights, Newark, NJ, home to more than 30,000 college students, NJIT's campus is just 10 miles from New York City.

Playing a critical role in shaping New Jersey's future, NJIT, as a major public technological university, is an important pipeline for the flow of technology into society. The university's educational programs prepare students to be leaders in the technology-dependent economy of the 21st century. University researchers seek new knowledge to improve processes and products for industry. Through public and private partnerships and economic development efforts, the university helps to grow new business ventures that fuel the economy.

In recent years, NJIT has put more than \$83 million toward new and improved buildings and facilities on the 45-acre campus, including biomedical engineering labs and a campus center.

Instructional Programs

NJIT offers an ever-expanding array of educational programs, with eight new academic programs approved beginning in 2009-10, which comes after the addition of 14 new programs in 2008. As of 2009, NJIT lists 55 bachelor's degree majors, 53 master's degree programs and 19 doctoral programs — through six schools:

- Newark College of Engineering**
- College of Architecture and Design**
- College of Science and Liberal Arts**
- School of Management**
- Albert Dorman Honors College**
- College of Computing Sciences**

NJIT has 490 full-time faculty; more than 98 percent of whom hold the highest degree in their field. The student-faculty ratio is 16:1, with more than 7,125 undergraduate students and more than 2,825 graduate students. Our students hail from 33 states and more than 100 countries to rank eighth in the nation for diversity. Albert Dorman Honors College enrolls more than 500 students who take advantage of honors courses, research opportunities, advising and mentoring. Honors College students have SAT scores ranking in the top 10 percent nationally.

With more than 44,000 alumni, NJIT is rated by U.S. News and World Report as a top-tier research university offering bachelor's, master's and doctoral degrees.

Research

NJIT's research expenditures totaled more than \$100 million in 2011. As of June 30, 2011, NJIT had 134 issued patents, of which 60 are licensed to third parties.





Strategic Initiatives

The University's 2010-2015 strategic plans identify several focal areas for growth and development in education of young people and professionals.

- Sustainable Systems, including sustainable design, environmental science and engineering, ecology and alternative energy technologies.
- Digital Everywhere, including wireless telecommunications, social networks and cloud computing, network security and financial bubble research.
- Life and Healthcare Science and Engineering, including tissue engineering and adult stem cell research, rehabilitation medicine, biomedical informatics and data mining, and drug development and pharmaceutical manufacturing techniques.

On-going projects designed to enhance campus life and increase residential students on campus by 600:

- Warren Street Village at NJIT, which includes the Dorman Residential Honors College, 6-story facility with residence floors to house 360 honors scholars, as well as a common area with studying and other facilities to be used by commuter and residential honors students alike, designed to increase academic and social collaboration among honors scholars. The complex will also house five duplex town houses for Greek organizations and will have a restaurant, convenience store and a fitness center.

- The Gateway Project, which will integrate development of an enhanced University Heights neighborhood, envisioned with such improved amenities as enhanced housing and new commercial space with shops and restaurants.

Economic Development

NJIT is committed to economic development for Newark and the region. The university operates several outreach centers that provide direct technical assistance to the state's businesses with the goal of helping small and medium-sized companies. NJIT is also the home of New Jersey's oldest and largest incubator facility, and was one of the first institutions in the nation to adopt economic development as a fourth mission element, together with instruction, research and community service. More than 60 technology start-up companies, many of which hire NJIT students, are on campus.

About NJIT

The Career Edge

All 10 of the majors with the highest starting salaries for 2005-06 grads are in engineering, computing and business, according to the National Association of Colleges and Employers.

Computer and data processing services lead the list of the 10 fastest-growing occupations in projections compiled by the U.S. Department of Labor. Computer-related employment is expected to grow 117 percent by 2008, according to the Career Guide to Industries.

As technology changes all fields, those with science and technology backgrounds are positioned to lead. Among the CEOs of the S&P 500 companies, engineering is the single largest undergraduate degree and more than half of CEOs have undergraduate degrees in engineering, business management, science, math and computing.

The Global Edge

The high level of diversity in NJIT's student body and faculty prepares graduates to understand and succeed in the global marketplace. U.S. News ranks NJIT 10th among national universities for campus diversity.

NJIT was named among the top 500 world universities in a study by the Institute of Higher Education, Shanghai Jiao Tong University. Institutions were judged on quality of education, quality of faculty, research output and size; only 170 US institutions were ranked in the top 500.

The Technology Edge

NJIT has been designated as one of the nation's most technologically sophisticated universities by Forbes.com and a Princeton Review survey and the university has received major funding from the National Science Foundation and the National Security Agency in recent years.

The Academic Edge

NJIT has long been a national leader in applying new technologies and approaches to the education experience. NJIT was a pioneer in requiring computer science for students in all majors and the School of Architecture has led innovations in teaching CAD and digital design. The School's innovative "paperless" first-year program was recently cited by Campus Technology Magazine.

Students have a wide range of educational choices in building an interest-tailored program. Among their options are cross-enrolling at neighboring Rutgers to enrich their program with subjects such as music and languages.

NJIT students learn emerging technologies from researchers behind the technologies, developing valuable marketplace skills. Real-world experience through experiential learning makes graduates more marketable, with many co-op opportunities leading to permanent jobs.

The Regional Edge

New Jersey, with America's highest concentration of pharmaceutical, hi-tech, biotech, and medical device companies, is the place to study technology. It has the nation's highest per capita number of engineers and scientists as residents, while also leading in per capita rate of patents issued. Further, the Newark-New York region is a living laboratory for architecture and building sciences, environmental engineering and transportation.





The Research Edge

NJIT has been designated by the State of New Jersey as the Homeland Security Technology Systems Center and NJIT operates the world-renowned Big Bear Solar Observatory.

A History of NJIT

From the Industrial Revolution to the Information Age, New Jersey Institute of Technology has a rich history with its beginnings developing from the industrial age.

In 1881, an act of the New Jersey State Legislature, recognizing an urgent need, sought a home for what would be the state's technical school. The efforts of Newark's public and private sectors resulted with the opening of Newark Technical School, addressing the state's need.

Over time, the university expanded its curriculum and mission. In 1919, the university established baccalaureate programs in three engineering fields. By the middle of the 20th century, Newark Technical School was transformed into the robust Newark College of Engineering.

The post-war period was one of enormous activity with regular expansion of the campus, as well as the introduction of doctoral level programs. In 1975, with the addition of the New Jersey School of Architecture, the institution had evolved into a technological university, emphasizing a broad range of degrees and dedication to significant research and public service. Newark College of Engineering, stronger than ever, remained intact, but a new university name — New Jersey Institute of Technology — reflected the institution's expanded mission.

A broadened mission called for the creation of a residential campus and the opening of NJIT's first dormitory in 1980 began a period of steady growth that continues. Two new schools were established during the 1980s—the College of Science and Liberal Arts (1982) and the School of Industrial Management (1988). The Albert Dorman Honors College was established in 1994, and the newest school, the College of Computing Sciences, was created in 2001. Beginning in 2009 the College of Architecture and Design was created to house the New Jersey School of Architecture and the new school of Art and Design.

Dr. Joel Bloom *President, New Jersey Institute of Technology*



On January 9, 2012, the New Jersey Institute of Technology Board of Trustees voted unanimously to appoint Dr. Joel Bloom as President of the University, effective immediately.

Dr. Bloom had been serving as Interim President of NJIT since September 28, 2011, following the resignation of the previous president, Robert A. Altenkirch,

who had been in that post since July 2002.

Speaking for the NJIT Board of Trustees, Kathleen Wielkopolski said: "It is in the best interest of the university to appoint a president at the earliest possible date to provide stability and continuity to the important work of the university; that is, educating New Jersey's future science and technology leaders, responding to opportunities presented by the governor for workforce and economic development, building NJIT's national academic and research reputation, and proceeding with our ongoing significant fund raising initiatives, specifically, the \$150 million 'NJIT NEXT' campaign."

Bloom, who was NJIT Vice President for Academic and Student Services, as well as founding dean of the Albert Dorman Honors College, is well-positioned to take on this leadership role. Bloom, with a career spanning 20 years at NJIT, is passionate about the university and its students as their education in the sciences, engineering, technology, design and management transforms their future and that of their families.

As Vice President for Academic and Student Services, Dr. Bloom is responsible for eight divisions of the university, including physical education and athletics. In that role, his guidance has been vital in NJIT's transition in intercollegiate athletics to NCAA Division I from Division II, an endeavor that began in earnest following November 2002 discussions among Dr. Bloom, then-President Altenkirch, and Director of Athletics Lenny Kaplan. The transition reached official fruition on September 1, 2009, when the NCAA embraced NJIT as an across-the-board active (full) member of Division I following completion of a rigorous formal process.

Bloom's impact on the university has been significant. Under his watch, student enrollment increased from 7,600 to over 10,000 students, including increases in female and minority students. The average SAT math score is now in the top quarter nationally; Dorman Honors College enrollment increased 70 percent, totaling 685 with combined average SAT scores over 1335 for fall 2011; articulation agreements are currently signed with the state's high-tech high schools and 19 county colleges; and accelerated joint admission agreements exist with Rutgers Biomedical and Health Sciences, St. George's Medical School, SUNY College of Optometry and Seton Hall Law School.

In his role as dean of the Dorman Honors College and Vice President for Student and Academic Services, Bloom was integral in helping to shape the academic plan for the university. Further, Bloom led the development of a Dorman Residential Honors College and the planning for a Greek Village in collaboration with Greek alumni and currently enrolled students. Previously, Bloom led the successful effort to raise \$23M for Dorman Honors College scholarships.

Bloom expanded the Center for Pre-College Programs to help prepare students for the rigors of science, mathematics, engineering and technology education; with the college deans and faculty, he expanded honors courses

and undergraduate research, established the university's medical and health committee of faculty to advise and assist undergraduate students entry into graduate and professional schools and to coordinate the health-related NJIT disciplines; he increased retention and graduation rates, and planned residence halls that transformed a commuter campus to one with more than 50 percent of the freshmen living on campus.

As the university proceeds to implement a major comprehensive fundraising campaign, "Dr. Bloom brings an understanding of the university, its history and contacts, and will provide the necessary continuity needed at this time," said Trustee Wielkopolski.

Bloom has served the Newark community through his participation in the development of Science Park High School. He has also initiated multiple programs with the Newark Public Schools, most recently with the new Central High School—yielding the largest number of enrolled NJIT freshmen from the school. For over a decade, he has served as vice chair of the board for Community and Schools, a national dropout prevention program serving Newark and other urban school districts. He is active in many education organizations including The NJ Presidents' Council Executive Board for New Jersey Edgenet and the executive board of the NSF-funded Philadelphia Alliance for Minority Participation.

He has received national and state education awards, as well as federal, foundation and corporate grant awards. He has published journal articles and presented papers on school improvement, curriculum development, college transition and student assessment.

Prior to joining NJIT, Bloom served seven years as an assistant commissioner for the New Jersey Department of Education for the Division of General Academic Education. He was responsible for managing many of the education department's initiatives during Governor Thomas Kean's administration and was responsible for

statewide assessment, curriculum standards, math/science/technology education, and the improvement of urban education through piloting the Effective Schools research and Alternative Education programs.

Formerly a teacher and school administrator in New York City Public Schools, Dr. Bloom was also a director of research and instructor at Teacher's College, Columbia University.

He holds a master's degree and a doctorate from Teacher's College, Columbia University. He also earned master's and bachelor's degrees from Hunter College of the City University of New York.

Charles J. Fey *Vice President for Academic and Student Services*



Dr. Charles J Fey, joined NJIT with 39 years of leadership experience in student services as the new NJIT Vice President of Academic and Student Support Service in September 2012.

Previously, he was Vice President for student engagement and success and a professor in the graduate school at the University of Akron where he managed a \$53 million divisional budget, a student affairs staff of 386 members, supervised three associate vice presidents, two assistant vice presidents plus fund-raised through gifts and grant-writing.

Fey's four years at Akron followed a decade of service at the University of Maryland Baltimore Campus (UMBC), a research extensive university and member of the University System of Maryland. UMBC is best known for its undergraduate honors college. His last position was as vice president for student affairs. More than 20 years of student support service experiences at six other institutions of higher learning preceded this position.

His proudest recent achievement was the creation and management of the Akron Experience, a signature program designed to advance total student learning and engagement to help students make intellectual connections between in-class and out-of-class learning while insuring pathways of success.

While there, he also partnered with the Provost on projects to enhance the equality of student life and the student experience. These efforts resulted in the creation of living/learning communities which were so remarkable that they have received national recognition. The out of the classroom

experiences created and implemented by members of his division resulted in Akron being named the "Campus of the Year" award from Campus Activities magazine.

At UMBC, three programs resulted in markedly higher retention and graduation rates--the latter from 54 to 61 percent. He partnered with the provost, faculty members and residence life staff to expand a successful residence hall faculty-mentoring program and living learning and communities and oversaw the establishment of a learning community for commuter students.

Working with the Provost's Office, he and a Vice Provost developed a first-year experience program featuring a traditional credit-bearing course which resulted in the establishment of an undergraduate education office.

Fey received his EdD in the administration of higher education from Texas A&M University. He received both his BA in liberal arts from Pennsylvania State University as well as his Master of Education in counselor/education/college student personal services. He did post master's degree coursework in business management and higher education at Catholic University.

Lenny Kaplan *Director of Athletics*

Since taking over as head of NJIT's division of physical education and athletics in August 2000, Lenny Kaplan has been instrumental in guiding NJIT's reclassification to NCAA Division I.



Kaplan helped stabilize and expand a program that was entering its fourth year in Division II when he arrived in Newark. In late 2002, after discussions with then-university President Dr. Robert

A. Altenkirch and then-Vice President Dr. Joel Bloom, Kaplan took on the task of

steering NJIT's programs into Division I, a process that reached fruition with the NCAA's granting active Division I status, with full championship eligibility effective September 1, 2009.

Throughout Kaplan's tenure, NJIT has enhanced the athletics program, particularly in areas that benefit the student-athletes directly. A hallmark in achieving that aim was the Highlanders Athletics Campaign, which announced in the summer of 2009 that it had raised \$5.4 million of the \$5 million goal. Of the \$5 million in the goal, \$3 million was for facilities, \$1.5 million for athletic scholarships, and \$500,000 for program support.

The sports offerings have expanded to the current 18 varsity programs. And since 2004, NJIT has renovated its two main on-campus venues—Lubetkin Field at Mal Simon Stadium at Lubetkin Field and the Estelle and Zoom Fleisher Athletic Center. Further, the Naimoli Family Recreation Center, a 25,600-square foot facility opened early in 2011 enhanced the recreational and intercollegiate opportunities on campus.

The school also signed a 10-year partnership to play all home baseball in the professional Bears and Eagles Riverfront Stadium and later agreed to host basketball in the new Prudential Center, downtown Newark home of the NHL's New Jersey Devils. The NJIT club hockey team also plays all of its home contests in the AmeriHealth Pavilion, which is part of the Prudential Center and serves as a practice rink for the Devils.

Under Kaplan's leadership, many teams achieved regional and national Division II ranking. Success for several women's teams was unprecedented, with basketball, tennis and soccer all reaching postseason play for the first time in his administration,

Additionally, men's volleyball captured a 2007 divisional championship in the Eastern Intercollegiate Volleyball Association and the next year reached the EIVA playoff semifinals hosted by eventual 2008 national champion Penn State.

Kaplan guided the Highlanders toward further stability with membership in the newly-expanded all-sports Great West

Administration

Conference, which offers a conference home for 11 of NJIT's varsity sports.

In 2009-10, NJIT's first year as a full active member of Division I, the women's volleyball team and senior Sabrina Baby became the school's first national statistical champions at the Division I level, as team and individual leaders, respectively, digs per set. Baby was honored as the school's first CoSIDA Academic All-America in the Division I era, earning third-team national honors.

Christian Baumbach, a sophomore at the time, made history in 2009 as NJIT's first individual conference champion at the Division I level, when he won the Great West Conference men's cross country race. He also won the prestigious IC4A University Division race in the 101st annual running of that contest.

In 2010-11, the Highlanders earned their first-ever Division I conference team championship when women's tennis captured the Great West title in May.

In 2012, following a run to the championship game of the Great West Conference tournament, senior captain Isaiah Wilkerson received honorable mention on the Associated Press Division I All-America team, becoming the first NJIT student-athlete to earn honors from the AP in the Division I era.

By practically any measure, the 2012-13 year was the most successful for NJIT athletics since the program made the move to NCAA Division I competition, beginning in 2004 with men's soccer.

Both NJIT basketball teams captured Great West Conference championships—a first for those sports at the Division I level. In fact, the women's team, which won the 2013 Great West Tournament, had never won a conference tournament title at any level since beginning play in 1986-87, and the men, who won multiple championships in Division III, had not finished first in a conference since 2002-03 at the Division II level.

On an individual level, impressive news came in June after the conclusion of 2012-13 competition. In less than a week, senior pitcher Mark Leiter, Jr. was selected in the 22nd round of the annual Major League Baseball First-Year Player Draft by the Philadelphia Phillies and classmate and fellow pitcher Tripp Davis signed a free agent contract to play in the Kansas City Royals organization.

Men's basketball star Chris Flores, also a 2013 graduate, was one of six prospects brought in by the Brooklyn Nets on June 12 for a closed workout in preparation for the 2013 NBA Draft. Joining Flores among the six prospects in his workout were players from such perennial college basketball powers as Kentucky, North Carolina, and Pitt.

Men's soccer made the biggest mark among the fall teams, notching 10 wins to double the previous Division I high for a program that brought NJIT (then NCE) its only national championship with an NAIA national title in an undefeated 1960 season.

The NJIT men's tennis team had their best Division I season, posting a 16-6 record.

The leader was freshman Markus Schultz, who hails from Hagersten, Sweden. Named Newcomer of the Year for the overall NJIT athletics program, Schultz was 20-1 in singles and finished the year ranked 18th in the NCAA Division I Northeast Region by the authoritative ITA. He is the first NJIT tennis player to earn ITA regional ranking at the Division I level (women's players Iulia Doci in 2005 and the late Fatima Kasem in 2004-05 were regionally ranked by the ITA in Division II).

In outdoor track and field, junior Kelsey Jackson became NJIT's first woman individual Great West Conference champion when she captured the high jump title. The NJIT men won their first-ever team championship in the Collegiate Track Conference, competing as one of 17 teams that included teams from all three NCAA divisions.

NJIT's outstanding home facilities have allowed it to host conference championships in the Great West Conference and allowed it to host ECAC postseason championships in 2005-06.

Before coming to NJIT, Lenny Kaplan served 11 years at Manhattan College, where he began as Manhattan's director of operations and was assistant athletics director from 1991-2000.

Kaplan, a 1988 graduate of St. John's University with a degree in athletics administration, resides in Merrick, NY, with his wife, Nancy, and their sons, Michael and Joshua.

Athletics Senior Staff



Alexis Schug

Assoc. Director of Athletics/SWA
(973) 596-8452 schug@njit.edu



Joe Caiola

Asst. Director of Athletics/Business & Facilities
(973) 642-7224 caiola@adm.njit.edu



Tim Camp

Asst. Director of Athletics/Sports Information
(973) 596-8461 timothy.camp@njit.edu



Jayson Smikle

Assistant Athletic Director for Compliance
(973) 596-5278 jsmikle@njit.edu



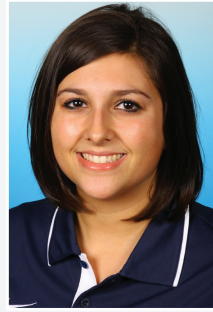
Matt Koscs



Paul Grayner



Melissa Maskery



Brittany Vorndran

Sports Medicine

NJIT sports medicine is moving forward with expanded facilities and a staff of four full-time trainers led by head trainer Matt Koscs, MS/ATC, with assistant trainers Paul Grayner, MEd/ATC, Melissa Maskery, and Brittany Vondran. They work with team physicians Louis Rizio, MD, and Stephen Matta, DO.

Matt Koscs, who earned both his bachelor's and master's degrees from the University of Delaware, has served NJIT as head trainer since July 2009, a year after he joined the staff as an assistant trainer. As an undergrad at Delaware, he was recipient of the Paris Delligatti Memorial Award for Excellence in Athletic Training.

Prior to NJIT, he served three years as head trainer at Hodgson Vocational Technical High School in Newark, DE. He also worked with soccer clubs in Delaware and was employed at Christiana Care Physical Therapy Plus, in Newark, DE.

Paul Grayner, who holds a bachelor's degree from Saint Leo College in Florida and a master's from American University in Washington, DC, has a diverse background in athletic training, having served at the college and professional levels, as well as in a fitness center setting. He joined the NJIT staff late in 2008.

From the mid-1970s to the mid-1980s, he was a trainer in the minor league systems of the New York Yankees and New York Mets and in 1984 he was assistant trainer with the Mets. He later worked with the Long Island Knights professional basketball team.

At the collegiate level, he was head trainer at Fairleigh Dickinson University in Teaneck, NJ from 1989 to 1998 and earlier worked as an assistant trainer at Hofstra, Adelphi and FDU.

Melissa Maskery, who joined the NJIT staff as an assistant athletic trainer in the summer of 2013, earned her bachelor's degree, majoring in athletic training and minoring in strength and conditioning, from the University of Delaware in 2011.

She earned her master's in athletic training at Temple University in May 2013. As a graduate assistant at Drexel, she worked with several teams and was on the medical staff for the 2010 National Championship Division IAA Football team.

At Drexel, she earned the 2013 Merit Award for Research in the College of Health Sciences & Social Work and was the recipient of Drexel University Dragon Award for Leadership. She resides in Wyckoff, NJ.

Brittany Vorndran, who joined the NJIT staff as an assistant athletic trainer in the summer of 2012, earned her bachelor's degree, majoring in athletic training, from Bridgewater (MA) State College in 2010 and was the school's 2008-09 Athletic Training Student of the Year.

She earned her master's in Kinesiology at James Madison University in Harrisonburg, VA, in May 2012. At James Madison, she worked with the cross country, track and field, tennis and cheerleading teams.

A resident of Millville, NJ, she has worked as a substitute teacher for the Millville Board of Education.

Dr. Louis Rizio is a board certified orthopedic surgeon and is fellowship trained in the field of sports medicine. He is a graduate of Rutgers and after earning his medical degree from the UMDNJ/New Jersey Medical School, Dr. Rizio completed his orthopedic residency at Tufts University in Boston.

He then completed a sports medicine fellowship at the University of Miami and was assistant team physician of the Hurricanes, as well as the Miami Dolphins, the Miami Hurricanes.

Dr. Rizio practices at the New Jersey Sports Medicine Institute in Livingston, NJ. Prior to starting his own practice, Dr. Rizio was the Chief of Sports Medicine at the NJ Medical School from 2000-2005. He is affiliated with four New Jersey hospitals: St. Barnabas Medical Center (Livingston); Short Hills Medical Center (Short Hills); Mountainside Hospital (Montclair); and, Overlook Hospital (Summit).

Dr. Stephen Matta, who is board certified in family medicine, currently specializes in primary care sports medicine at Mountainside Hospital in Montclair, NJ, a post he assumed after three years in the family practice residency program at Valley Baptist Medical Center in Harlingen, TX. He is a 2007 graduate of a five-year DO/MBA dual degree program with Philadelphia College of Osteopathic Medicine for his medical degree and Saint Joseph's University for an

MBA in healthcare administration. He is a 2002 magna cum laude graduate of Duquesne University in Pittsburgh, with a BS in honors chemistry. He and his family reside in Belleville, NJ.

Strength and Conditioning

Strength and conditioning is a key part of a successful Division I program, with an eye toward maximizing individual and team performance in competition. The strength and conditioning coach also works closely with the Athletic Training Staff in the areas of injury prevention and injury rehabilitation.

Administration



Dan Huff

The 2008-09 year brought another dimension to NJIT athletics with the hiring of *Dan Huff*, CSCS, as the program's first full-time strength and conditioning coach. In addition to the hiring of a full-time coach to coordinate

the strength and conditioning, NJIT renovated the weight rooms and purchased new equipment, with the area dedicated to use by the Highlander teams.

Huff previously served five years as strength and conditioning coordinator at Fairleigh Dickinson University in Teaneck, NJ, from 2003 to 2008, working with an 18-sport NCAA Division I program.

Huff was Sports Performance Director for Velocity Sports Performance in Wall, NJ, immediately before accepting his position at NJIT. He is a graduate of William Paterson University of New Jersey. He holds numerous certifications.

Academic Enrichment

NJIT's Center for Academic and Personal Enrichment (CAPE) added a new component in 2007 with the addition of an Associate Director position that was created for the specific purpose of serving the needs of NJIT's student-athletes.

The position focuses on five key areas: academic support, career development, personal development, leadership and community service including the Student-Athlete Advisory Committee and CHAMPS Life Skills for NJIT's nearly 300 student-athletes.

Sandra Taylor filled the post in January 2010, having previously spent her professional career at Manhattan College, which is also her alma mater.

Working at Manhattan, a founding member of the Metro Atlantic Athletic Conference, Taylor was most recently Associate Director of Athletics and Senior Woman

Administrator, filling those posts from 1996 to 2010.

For much of that time (1995-2003), she was Chief Athletic Department Compliance Officer. She began her service at Manhattan as Athletic Department Ticket Manager, serving in that capacity from 1993 to 2003.

She served on numerous NCAA, conference and internal college committees, including service on the NCAA Division I Management Council from 2004 to 2007 and as chair of the NCAA Women's Lacrosse Committee from 2002 to 2006.

She earned both her bachelor's degree in secondary education and her master's degree in special education from Manhattan College and is a doctoral candidate in educational leadership at St. Mary's University in Winona, MN.

Sandra and her husband, Ken, who is Associate Commissioner for Men's Basketball and Baseball at the MAAC, reside in Monroe Township, NJ, with their daughters, Katherine, who was born in May 2004, and Samantha, who was born in July 2009.

Mike Spisto moved to administration as NJIT's Eligibility Certification Office/Academic Adviser for Athletics in the Spring of 2013, working in the Center for Academic and Personal Enrichment (CAPE).

For the previous five years, he was the top assistant coach on the men's basketball staff, working with head coach Jim Engles in an association that culminated with the Highlanders capturing the regular season championship of the Great West Conference.

In addition to 14 years college coaching—five at NJIT—he served as Director of Athletics at the State University of New York at Delhi in the two years before he joined Engles' coaching staff with the Highlanders.

He had two stints as head coach at the SUNY at Delhi sandwiched around three years as a Division I assistant with Rider and Albany (NY). He began his coaching



Sandra Taylor

career with two years an assistant at his alma mater, Division III SUNY Oneonta.

At Delhi, which is also an alma mater, he was head coach from 1999 to 2001, left to become a Division I assistant and then returned for another two-year stint as head coach from 2004 to 2006 before becoming AD at Delhi.

His head coaching record in four years at SUNY Delhi was 86-31 and both stints included championships and coaching awards.

His first Division I coaching assignment came at Rider University in 2001-02, where he worked alongside Jim Engles as an assistant when Rider captured its first-ever Metro Atlantic Athletic Conference regular season championship.

Heading to the University at Albany (NY), he helped recruit the team that would win back-to-back America East Conference championships

Spisto's coaching career began at Oneonta State following his 1997 graduation. In addition to his bachelor's degree from Oneonta, he earned an associate's degree from SUNY Delhi, as well as an MSS from United States Sports Academy.

He played at both Delhi and Oneonta and was all-region twice at Delhi, where he is the career assists leader. At Oneonta he was captain as a senior after winning an ECAC title his junior year.

Mike and his wife, Katie-Lynn, reside in Staten Island, NY, with their young children: sons Michael and Christopher, and daughter Alyssa.



Mike Spisto



Alex Adam

Background photo: Amanda Redden

Beginning on September 1, 2009, the entire NJIT athletics program officially gained across-the-board active membership in NCAA Division I, completing a process that began officially in 2003.

NJIT, its teams, and student-athletes enjoy the full benefits of Division I membership, including eligibility for Division I postseason championship competition and the inclusion of the Highlanders among the national Division I leaders in statistics maintained by the NCAA.

Within months of NJIT's active Division I membership, the school won its first national Division I statistical championships, as women's volleyball player Sabrina Baby led the nation in digs per set, while she and her teammates captured the team digs crown for digs, as well.

The NCAA's decision making NJIT a full member of Division I completed a specific timetable that required NJIT and its Department of Athletics to meet a series of annual benchmarks before proceeding to the next step.

NJIT, which previously competed in NCAA Division II, first moved to reclassify its men's soccer program in 2003. The move grew out of November 2002 meetings among President Robert A. Altenkirch, Vice President Joel Bloom, and Director of Athletics Lenny Kaplan. From there, came a proposal from Dr. Altenkirch to the Board of Trustees, which unanimously approved in February 2003 a plan to reclassify men's soccer to Division I. Little more than two years later, the NCAA approved NJIT's proposal to begin advancing its entire program to Division I.

Men's soccer achieved active Division I status in 2005 and NJIT women's soccer became postseason-eligible in 2007. The remainder of NJIT's athletics program also began reclassifying in 2005, with active status taking longer for an entire program than under the single-sport-per-gender track used for the two soccer teams.

In 2005-06 the lion's share of the competition for all but men's soccer came at the Division II level. In 2006-07, 2007-08, and 2008-09, NJIT's teams competed at the Division I level and complied full with NCAA Division I rules, but were not eligible for championships at the top level.

Every facet of the program has been enhanced in the reclassification, with a special emphasis placed on student-athlete welfare. Facility upgrades have gone along with sports medicine staff

expansion, a strength and conditioning program, and academic enrichment. NJIT has also built a model NCAA Division I rules compliance regimen within its athletics program and across the entire university.

A key late benchmark in reclassification came in the spring of 2009, with NJIT's successful completion of the NCAA Division I certification self-study. An in-depth project that takes approximately one year to complete and involves an on-campus visit from a Peer Review team, Division I certification, renewable every 10 years, is required of all active Division I institutions.

"We completed a major milestone in demonstrating that we have the infrastructure in place and the commitment to compete at the highest levels, not only academically but now athletically as well," said Dr. Altenkirch, who made upgrading athletics a priority from the beginning of his tenure as the seventh President of NJIT in May 2002.

Professor Robert English, the NCAA Faculty Athletics Representative and Interim Dean of the School of Management, added, "I am very impressed with NJIT's student-athletes who have worked hard to meet the challenge of the heightened level of Division I competition and at the same time continued to excel academically, with many athletes earning academic honors and awards and several earning perfect 4.0 GPAs during the semester of competition."

Further, the NJIT Board of Trustees embraced the transition to Division I as part of the university's strategic plan to enhance the quality of campus life in

NJIT and NCAA Division I



Rebecca Tustin

NJIT's transition to a residential university.

Going back to early announcements of NJIT's NCAA reclassification plans, Altenkirch stated: "As NJIT continues to grow academically, and as a residential university, strengthening the athletics program through the transition to Division I will allow us to align the university with our academic peers."

Already, NJIT's teams have competed throughout the United States, taking on opponents from schools that are instantly recognizable for their stature in academics and athletics.

NJIT student-athletes have all faced opponents from eight Ivy League schools and 9 Patriot League schools including Army and Navy, Bucknell, Lafayette, and Leigh.

The eighth New Jersey-based institution Division I, NJIT has competed against all

seven of its home state peers including Rutgers and Seton Hall.

In addition, Highlander teams have taken on squads from such famed conferences as the Atlantic Coast Conference, Big East Conference, Big Ten Conference, Big 12 Conference, and Pac 10 Conference.

Two high-profile opponents--Maryland in men's soccer in 2005 and Penn State in men's volleyball in 2008—won national championships following the same regular seasons in which they faced NJIT.

The Highlanders have also competed against members of all of the conferences based in the Northeastern and Mid-Atlantic regions of the United States, including America East, Atlantic 10, Colonial, Metro Atlantic, Mid-Eastern, and Northeast.

The eighth New Jersey-based institution in Division I, NJIT has competed against all seven of its home state peers, including Big East programs Rutgers and Seton Hall.



Grace Seeley

Background photo: Danielle Pierce



Samantha Bersett

NJIT's longest-established Division I program, men's soccer, gained its first win against a Big East foe in 2008, defeating Rutgers a year after topping San Diego State for the Highlanders' first win over a Top 25-ranked team.

NJIT began play as a core member of its first Division I conference, the Great West Conference, which began full competition in 2009-10. In the spring of 2011, the second season for the GWC, the Highlanders celebrated their first Division I team championship, when women's tennis captured the Great West title.

With its place in Division I officially certified by the NCAA, NJIT looks ahead to continued growth. That outlook is consistent with President Altenkirch's frequently expressed view that, "the transition to Division I is just that, a transition, a process rather than an event."

For his part, Director of Athletics Lenny Kaplan said: "We are looking forward to being a solid and successful member of Division I and we are excited by the opportunity to write a new chapter in the history of NJIT athletics."

Athletics Facilities

The New Jersey Institute of Technology teams play home games and practice in a combination of facilities on campus and off.

The on-campus facilities include Lubetkin Field at Mal Simon Stadium for outdoor sports and the Estelle and Zoom Fleisher Athletic Center for indoor sports. In addition, NJIT in 2011 opened is the Naimoli Family Athletic and Recreational Facility, a multi-purpose indoor facility on the site of the former outdoor tennis courts.

Off-campus venues include Bears and Eagles Riverfront Stadium, a professional minor league stadium that is the home of NJIT baseball; the Prudential Center, home of the NHL Devils and NBA Nets, which has hosted selected NJIT basketball games; and, Branch Brook Park in Newark and Van Cortlandt Park in the Bronx, home sites for NJIT cross country. All except for Van Cortlandt Park are less than two miles from the NJIT campus.

Lubetkin Field at Mal Simon Stadium

The men's and women's soccer teams play their home games and practice on campus at Lubetkin Field at Mal Simon Stadium, a first-class venue for college soccer.

The field on the west end of NJIT's University Heights campus is an all-weather facility, with 24/7 availability for competition or practice. Outfitted with SprinTurf artificial grass in the summer of 2004, Lubetkin Field at Mal Simon Stadium also includes lighting for night contests, bleacher seating for more than 1,000 spectators, a press box and scoreboard.

The fully-enclosed facility, with its entrance a few feet opposite the entrance of the indoor Estelle and Zoom Fleisher Athletic Center, can take its place alongside any college soccer facility in the Northeast.

The home of Highlanders soccer served as the host site for the first-ever Great West Conference women's soccer championship tournament in November 2009.

Previously, NJIT hosted the three-day 2005 ECAC Division II women's soccer championship tournament.

In the fall of 2005, when the Northeast was hit with record rainfall, games went on without a hitch at Lubetkin Field, thanks

to the quality of the surface. Indeed, with the rain disrupting schedules around the region, some crucial Big East contests involving Seton Hall were moved to NJIT's home field. Those games, too, went off without a hitch.

Estelle and Zoom Fleisher Athletic Center

The NJIT men's and women's basketball teams and men's and women's volleyball teams play their home games in the Fleisher Athletic Center gymnasium, while the swimming team competes and practices in building's pool. The Fleisher Center also houses intercollegiate fencing, as well as all athletic department offices, varsity and general weight and fitness rooms, and the athletic training room.

In the summer of 2006, the gym underwent renovation to include installation of a new floor and baskets, new lighting, new sound system and new scoreboards, along with entirely new seating for approximately 1,500 spectators after the first phase of renovation. The back bay 'C gym' can be sectioned off from the main competition floor, making the facility useful for intramurals, physical education classes and campus recreation time, while being able to host multiple simultaneous events.

A six-lane swimming pool in Fleisher Athletic Center is home to the NJIT swimming team. Fencing has its own area on the second floor of the building.

In addition to all athletic department offices, the Fleisher Athletic Center also houses the sports medicine staff in the Athletic Training Room and the varsity weight room, supervised by the head strength and condition coach. The building's third floor is home to a fitness center, which is open for use by all students and staff.



Lubetkin Field at Mal Simon Stadium

Athletics Facilities



Soccer locker room at Estelle and Zoom Fleisher Athletic Center

The Naimoli Family Athletic & Recreation Facility

Opened in 2011, the facility is approximately 25,600 square feet. The Naimoli Family Center will be a multi-purpose space for athletics, community recreation, and gatherings involving large numbers of people.

Built on top of the old outdoor tennis courts adjoining the Fleisher Athletic Center, construction of this new building has been made possible, in part, by a generous gift from Vincent Naimoli '62, Chairman and CEO of Anchor Industries International and Chairman Emeritus/ Founder of the Tampa Bay Rays major league baseball team.

The facility houses courts for tennis and is available for other athletic and recreational activities, including practice for basketball and volleyball. It is heated and air conditioned, with flooring appropriate for the intended athletics and recreational activities.

Its indoor tennis courts offer vital year round practice and playing opportunities for NJIT's intercollegiate tennis teams, which have been consistently successful in the transition to Division I. In 2011, the women's tennis team became NJIT's first conference championship team in the Division I era.

Bears and Eagles Riverfront Stadium: Home of the NJIT Highlanders

Joe Torre, then the manager of the New York Yankees, visited New Jersey Institute of Technology on December 8, 2005 to herald a new partnership between NJIT's baseball team, the Highlanders, and the Newark Bears.

Torre, a friend of the Bears and of college baseball, was on hand as the Highlanders signed a 10-year contract to play their home games at Bears & Eagles Riverfront Stadium in Newark.

"I think this partnership is nothing but aces," Torre said during a press conference at NJIT. "It's a partnership between two

class organizations that will make for nothing but a lot of fun for everyone."

For the previous two years, the Highlanders played their home games at the stadium. But the team's longer-term commitment to play at the stadium came as NJIT elevated its baseball program to Division I.

"NJIT is bringing Division I baseball to this great stadium," said NJIT President Robert A. Altenkirch, "which will generate the highest level of excitement. It's a great partnership that allows NJIT to play intercollegiate baseball in a great facility, maybe the best for college baseball in the country."

Bears and Eagles Riverfront Stadium, the \$30 million state-of-the-art home of the Newark Bears, officially opened to the public on July 16, 1999.

With a seating capacity of 6,200 Bears and Eagles Riverfront Stadium affords everyone in attendance an up-close view of the action. The ballpark also has 20 luxury suites, a picnic area, a party deck, a concert stage situated behind the outfield wall and a major league-caliber press box featuring two radio booths and two television booths.

The name, Bears and Eagles Riverfront Stadium, honors Newark's rich baseball history. The original Bears were a farm team for the New York Yankees up until 1949 and the Eagles were a very successful Negro League team that played in Newark until 1950.



Bears and Eagles Riverfront Stadium

Athletics Facilities



Prudential Center

In October 2007, the Prudential Center ushered in a new era in sports and entertainment in Newark and the entire northern New Jersey area.

Prudential Center is the cornerstone in the revitalization and renaissance of downtown Newark. In addition to the arena, Newark will soon add scores of condominiums, restaurants, themed bars and mixed retail establishments. Prudential Center, one of the finest arenas in the country, is New Jersey's home for hockey, basketball, concerts and numerous other events.

A public/private partnership between the City of Newark and Devils Arena Entertainment made the \$375 million Prudential Center a reality that is changing the face of downtown Newark and making it a destination place for sports and live entertainment in the region.

"The Rock" is located about a mile from NJIT's University Heights campus and is known best as the home of the National Hockey League New Jersey Devils and the former home of the National Basketball Association New Jersey Nets.

The arrival of the spectacular Prudential Center nearly coincided with NJIT's arrival as an NCAA Division I institution--the first in Newark and the newest in New Jersey in more than 20 years. The Rock opened one year after NJIT began Division I competition as part of its NCAA reclassification which is now complete.

In the arena's inaugural year, NJIT played host to six basketball games on four dates, including four men's basketball games and two women's games. Included was the first women's basketball game in the building's history, when the Highlanders entertained Cornell on January 15, 2008.

The Highlanders hosted additional basketball games in subsequent years and have played there each year of the building's existence. Further, NJIT's club ice hockey team plays all of its home games in the full-size Devils practice rink facility

(AmeriHealth Pavilion), which adjoins the main arena and has an 800-seat capacity. And one of the special events held in the main arena is NJIT's annual commencement.

Branch Brook Park and Van Cortlandt Park

A hallmark of the NJIT cross country program under veteran coach Al Alonso is its ability to host cross country competition that have made Highlander-sponsored races a popular destination for schools from throughout the New York/New Jersey area.

In 2009, NJIT hosted the Great West Conference championships at Van Cortlandt Park in the Bronx, and the course, which is home to some of the most prestigious events in the sport, is also the home venue for other annual NJIT-hosted races. Branch Brook Park, which is a public park of Essex County, reaches into several towns, including Newark, with the park entrance less than a mile from the NJIT campus.

About Newark



Newark: The Renaissance City

NJIT is located in the heart of New Jersey's largest city, Newark, with a population of over 300,000, making it the 65th-largest city in the United States. A major urban center, Newark is a city on the move.

Attractions in Newark include:

- **The Prudential Center, a major indoor entertainment and sports venue housing New Jersey Devils hockey and major concerts and other premier events**
- **New Jersey Performing Arts Center**
- **The Newark Museum**
- **The Newark Public Library**
- **Symphony Hall**
- **Branch Brook Park**
- **Art galleries, restaurants, shopping**
- **The Ironbound neighborhood, renowned for its dining and vibrant nightlife**
- **An urban architectural laboratory**
- **Professional minor league baseball (Newark Bears)**

Newark: New Jersey's College Town

Some 30,000 undergraduate, graduate, and professional students attend classes in the University Heights section, which is home to NJIT, Rutgers-Newark, Rutgers Biomedical and Health Services, and Essex County College.

Adjacent to NJIT to the east, is the Newark campus of Rutgers University and the two schools enjoy an exceptionally close and productive relationship. NJIT and Rutgers students have library privileges at both campuses. NJIT students may also enrich their educational experience by enrolling in Rutgers-Newark courses and in full degree programs in disciplines not offered by NJIT, such as art, music, geology, and psychology.

Each year, the two universities co-sponsor a common season of theatrical productions, as well as 'World Week', a joint program of honors colloquia, and a variety of other cultural and social activities.

NJIT also enjoys a cooperative relationship with its neighbor to the west in the University Heights area, UMDNJ, with several joint degree programs.

New Jersey/New York Metropolitan Region

NJIT and Newark are a part of a region that is a magnet not only to the rest of the United States, but also to the world.

In Newark and neighboring northern New Jersey alone, attractions such as the Prudential Center, New Jersey Performing Arts Center, Meadowlands Sports Complex, Red Bull Arena, Liberty Science Center, and numerous others are minutes away by car and in most cases accessible by public transportation. Literally dozens of shopping malls are within a 20-minute drive of Newark, as well.

Midtown Manhattan, with all that it and the rest of New York City offer, is less than 15 miles from the NJIT campus.

NJIT students have regular access to discount tickets for Broadway shows, museums, concerts, and sporting events.

The school also sponsors weekend trips throughout the northeastern United States, with activities such as skiing, boating, swimming, hiking, and more.

The spectacular Jersey shore is less than an hour away by car and winter sports are within a couple of hours drive to the west and north.

Sports & Entertainment Around Newark

NJIT, with its campus in Newark, NJ, sits in a region that abounds with major professional sports unlike any other in the United States and perhaps in the world. There are nine teams in the major professional leagues (MLB, NFL, NBA, and NHL) located in New York City, northern New Jersey and Long Island.

Only one of nine major teams is more than 25 miles from Newark, but most, including the New Meadowlands Stadium (Giants and Jets NFL football), Madison Square Garden (NBA Knicks, NHL Rangers), are much closer.

The three closest professional sports venues (listed below) are within three miles of NJIT's campus and can be accessed in a matter of minutes at low cost by public transportation, beginning with Newark Light Rail, from campus.

Prudential Center

The home of the National Hockey League New Jersey Devils and the New Jersey Nets of the National Basketball Association is in downtown Newark at the corner of Mulberry and Edison streets, about one mile from the NJIT's University Heights campus.

Opened in October 2007, 'The Rock' is the centerpiece of the city's Downtown Core Redevelopment Project. In addition to NHL hockey and NBA basketball, it has hosted numerous entertainment and sporting events, including NJIT basketball.

NJIT played basketball in the Rock in the inaugural year and in each year since. Indeed, NJIT hosted the first women's basketball game ever played in the Prudential Center on January 15, 2008 (NJIT vs. Cornell).

The arena, with full-capacity seating for 18,500 spectators, features a 4,800 square-foot exterior LED screen, as well as the latest in ice-surface technology and a gourmet restaurant overlooking the ice for Devils games. The building contains 850,000 square feet of space, 9,000 tons of steel, eight million pounds of structural steel and 25,000 cubic yards of concrete.



Sports & Entertainment Around Newark



Red Bull Arena

Located in Harrison, NJ, just across the Passaic River from Newark and less than three miles from the NJIT campus, the new home of the New York Red Bulls (opened in March 2010) sets the standard for soccer venues across North America.

The state-of-the-art soccer-specific facility is a major component of a multi-billion dollar development.

Red Bull Arena has a number of key design elements which give its seating bowl a close-to-the-action feeling and the unique stadium roof design extends from its leading edge over the entire seating bowl and then curve down to the concourse.

The overall seating capacity for soccer is 25,000, including 30 luxury suites (20 lower level and 10 upper level) and 1,116 club seats. Other amenities include three stadium clubs and two retail outlets.



Bears and Eagles Riverfront Stadium

Bears and Eagles Riverfront Stadium, the \$30 million state-of-the-art home of the professional baseball Newark Bears and since 2004 the home of NJIT Highlanders baseball, officially opened to the public on July 16, 1999. With a seating capacity of 6,200, "The Den" affords fans an up-close view of the action. The ballpark also has 20 luxury suites, a picnic area, a party deck, a concert stage situated behind the outfield wall and a major league-caliber press box.

In December 2005, NJIT and the Bears held a joint press conference to herald a new partnership that includes a 10-year deal that extends Bears and Eagles Riverfront Stadium as the home of NJIT Highlanders baseball.

COACHING STAFF



HEAD COACH MANDI RISDEN

Mandi Ridsen, who was promoted to head coach of the NJIT women's soccer team in April 2013, has been on the NJIT coaching staff since 2008 and has coached in three NCAA Division I programs, including NJIT, since 2000.

She has twice served as interim head coach of the Highlanders, leading the program for five

months in the 2010-11 offseason and again in 2013 from the March resignation of Sergio Gonzalez, who stepped down from his position as NJIT head coach to become an assistant coach at Indiana University in the Big Ten Conference.

"I am excited to be able to elevate Mandi to our head coaching position here at NJIT," said Director of Athletics Lenny Kaplan. "Her playing experience combined with her coaching experience, most recently here at NJIT, make her the right fit for us at this stage of our program's development."

Ridsen, who earned a bachelor's degree at Auburn University and a master's degree at Drexel University, first coached at the Division I level from 2000 to 2004 as an assistant/goalkeeper coach at Rutgers University. The Scarlet Knights reached the 2003 NCAA College Cup Sweet 16 and the second round of the 2001 NCAA College Cup in her time at Rutgers, which ranked 14th in the final NSCAA Division I poll in 2001.

From Rutgers, Ridsen moved to Brown University in the Ivy League, where she was an assistant/goalkeeper coach with the women's program from 2004 to 2008.

Coming to NJIT, she was the lead assistant under then-head coach Kevin Leacock from 2008 to November 2010. In 2009, NJIT finished in first place in the Eastern Division of the

Great West Conference with a 4-1-1 league mark that was part of a program Division I-best (since 2006) 7-9-2 overall record.

Ridsen was interim head coach from November 2010, when Leacock stepped down, to March 2011, when Gonzalez was hired to lead the program after a highly-successful stint as an assistant at Dayton.

Ridsen remained at NJIT as the top assistant for Gonzalez and she was re-appointed as the interim head coach last month and then was officially named as the head coach in April.

"I would like to thank Lenny and the rest of the administration for this tremendous opportunity," the new head coach said. "I am extremely grateful and excited to continue being a part of the NJIT Women's Soccer Program. I look forward to building on the foundation that has been set over the past few years and to helping the program continue to reach new levels of success."

In addition to her 13 years as an NCAA Division I assistant coach, Ridsen was a four-year goalkeeper in a career at two Division I programs (Clemson, 1994-96; and Auburn, 1997). At Auburn, she was team captain and a scholar-athlete award winner. At Clemson, she played on three teams that competed in the Division I Women's College Cup Tournament and finished ranked in the National Top 15 in each of her three seasons (13th in 1994, 15th in 1995, and 11th in 1996).

She resides in Matawan, NJ.

ASSISTANT COACH ERWIN VON BENNEKOM



Erwin van Bennekom, a native of the Netherlands, joined the NJIT women's soccer coaching staff for 2011, following extensive experience developing club soccer players.

He moved up to the full-time assistant coaching post in 2013 when Mandi Ridsen was promoted to head coach of the Highlanders.

Still active in New Jersey club soccer, he added assistant coach of Sky Blue FC, the New Jersey-based entry in the

professional National Women's Soccer League, to his portfolio.

At Sky Blue, he coached United States Women's National Team stalwart and multi-Women's World Cup and Olympic Gold medal winner Christie Rampone, as well as USWNT goalkeeper Jill Loyden and Kelley O'Hara, among other outstanding professionals, several of whom play on their respective national teams outside the US.

Before that, he headed the New Jersey Select and New Jersey Blaze women's team in the Women's Premier Soccer League for two years. He also coached the Real New Jersey SC Power and NJ Elite '95, both top-ranked club teams in their age group in the country.

He is a graduate of CIOS Academy - Institute of Sports and the KNVB (translated in English as Royal Dutch Football Association) Academy in his home country, which is renowned worldwide for its player and coach development program.

Erwin holds a UEFA "B" and "C" License, KNVB Trainer Coach II & III License, US Soccer USSF "C" License, NSCAA Youth Diploma and Rene Meulensteen Technical Training Diploma.

ASSISTANT COACH KATRINA SMEDLEY



A 2013 graduate of College of William and Mary, Katrina joins the NJIT women's soccer coaching staff for the start of the 2013 women's soccer season.

Smedley, who majored in Kinesiology and Health Sciences with a concentration in Health Science and a minor in Psychology at William and Mary, was a Division I women's soccer player, competing for The Tribe from 2009 to 2012.

She works for the New Jersey Olympic Development Program which identifies potential national youth players. She is the second assistant coach for the East Windsor, NJ-based program, serving under Glenn Crooks, who is also the long-time head coach of women's soccer at Rutgers.

Katrina, who is preparing to attend physical therapy school in the near future, served as Fitness and Wellness Coach and Therapist Aid in Williamsburg, VA, when she was a college senior.

She resides in Hamilton, NJ.

ASSISTANT COACH TIM VERSCHUREN



A native of the Netherlands, Tim Verschuren joined the NJIT women's soccer coaching staff in August 2013.

He is a graduate of University of The Hague (Haagse Hogeschool), in his home country, where he received a bachelor's degree in Sports Management in 2009.

Tim, who came to the United States in 2009, works for the New Jersey Soccer Group in Morris Plains, NJ, coaching multiple youth teams from U8 to U18 and serves as the head coach of the Morris United STA.

Tim holds a KNVB (Royal Dutch Football Association) for UEFA "C" license, NSCAA National Diploma and NSCAA Advanced National Diploma.

2013 ROSTER

NO.	NAME	YR.	HT.	POS.	HOMETOWN/HIGH SCHOOL
00	Karen David	Fr.	5-9	GK	Aberdeen, NJ/Biotechnology
0	Larissa Beer	So.	5-9	GK	London, Ontario, Canada/St. Thomas Aquinas (London, ON)
1	Samantha Bersett	So.	5-9	GK	Wildwood, MO/Cor Jesu Academy (St. Louis, MO)
2	Megan Dellavalle	Jr.	5-3	F	Santa Rosa, CA/Montgomery
3	Dana Schules	Fr.	5-3	MF	Blackwood, NJ/Trinton Regional
4	Carly Berdan	Fr.	5-5	F	Woodland Park, NJ/Passaic Valley
6	Rebecca Tustin	Sr.	5-7	F	Haddon Heights, NJ/Haddon Heights
7	Danielle Pierce	So.	5-9	D	Ajax, Ontario/ Archbishop Denis O'Connor Catholic
8	Kylie Jones	Jr.	5-7	MF	Cheshire, England/Ellesmere Port Catholic
9	Brittany Goulart	Fr.	5-5	M	Canyon Lake, CA/Temescal Canyon
10	Julia Keebaugh	Fr.	5-1	D	York Haven, PA/Red Land
11	Kaelyn Gamel	So.	5-4	F/MF	Hamburg, NY/Hamburg
12	Erin Schmitt	Sr.	5-4	D	Ramsey, NJ/Ramsey
13	Camille Billing	Sr.	5-6	F	Tecumseh, Ontario/St. Anne Catholic
14	Madeline Griep	So.	5-4	MF/F	Burlington, Ontario/Nelson
15	Ashley Lofgren	Fr.	5-7	D	Fort Myers, FL/Bishop Verot Catholic
16	Jenny Cislo	Jr.	5-7	D	Crownsville, MD/Old Mill Senior
17	Amanda Redden	Sr.	5-4	CM	Hamilton Square, NJ/Steinert
18	Antonietta Jackson	Fr.	5-1	MF	Freehold, NJ/Freehold Township
19	Abi Fakolujo	So.	5-5	F	Magnolia, NJ/Triton Regional
21	Alex Adam	So.	5-6	MF	Centereach, NY/Centereach
22	Grace Seely	Jr.	5-5	B	London, England/Bexley Grammar School
23	Jamee Simone	Fr.	5-7	D	Berlin, NJ/Eastern Regional
24	Catherine Andrus	Jr.	5-7	D	Monroe Township, NJ/Bishop George Ahr
25	Jaclyn Ward	Fr.	5-4	D	Pasadena, MD/Chesapeake
26	Courtney McHugh	Fr.	5-5	F	Hershey, PA/Hershey
27	Emmy Hattle	Fr.	5-7	D	Western Springs, IL /Lyons Township



2012 STATISTICS & RESULTS

RECORD:	OVERALL	HOME	AWAY	NEUTRAL
ALL GAMES	4-13-3	3-5-2	1-7-1	0-1
CONFERENCE	2-3	2-1	0-2	0-0
NON-CONFERENCE	2-10-3	1-4-2	1-5-1	0-1

Date	Opponent	Score	Att.	#	Player	gp	g	a	pts	sh	sh%	sog	sog%	gw	pk-att
Aug 17	at Saint Peter's	W 3-0	178	5	Gechi Ukaegbu	19	3	1	7	17	.176	6	.353	1	0-0
Aug 19	at Rider	Lo2 0-1	198	10	Erin Williams-Weir	16	3	0	6	9	.333	5	.556	1	2-2
Aug 24	MARIST	L 2-3	419	4	Meryl Hershfield	20	2	1	5	14	.143	3	.214	1	0-0
Aug 26	at Rhode Island	L 0-1	112	15	Erin Morris	19	2	1	5	10	.200	4	.400	0	0-0
Aug 31	at Temple	L 0-1	103	2	Megan Dellavalle	14	2	0	4	6	.333	3	.500	0	0-0
Sep 02	MONMOUTH	W 2-1	615	8	Kylie Jones	15	1	1	3	10	.100	4	.400	1	0-0
Sep 07	QUINNIPIAC	To2 0-0	400	14	Madeline Griep	20	0	3	3	13	.000	4	.308	0	0-0
Sep 09	WAGNER	L 1-3	228	20	Marissa Borschke	5	1	0	2	5	.200	2	.400	0	0-0
Sep 14	FDU	L 1-3	399	21	Alex Adam	19	0	2	2	13	.000	7	.538	0	0-0
Sep 16	IONA	To2 1-1	221	17	Amanda Redden	20	0	1	1	29	.000	10	.345	0	0-0
Sep 20	at Dartmouth	L 0-5	450	16	Jenny Cislo	20	0	1	1	3	.000	2	.667	0	0-0
Sep 23	at Lafayette	To2 1-1	319	22	Grace Seely	17	0	1	1	2	.000	0	.000	0	0-0
09/30/12	at Penn	L 0-4	147	6	Rebecca Tustin	20	0	0	0	17	.000	7	.412	0	0-0
* Oct 05	at Utah Valley	L 0-2	514	19	Abi Fakolujo	16	0	0	0	9	.000	8	.889	0	0-0
Oct 07	COLUMBIA	L 0-2	107	12	Erin Schmitt	18	0	0	0	2	.000	0	.000	0	0-0
* Oct 11	DELAWARE STATE	W 1-0	187	11	Kaelyn Gamel	15	0	0	0	1	.000	0	.000	0	0-0
* Oct 13	HOUSTON BAPTIST	L 0-2	256	27	Emmy Hattle	8	0	0	0	0	.000	0	.000	0	0-0
* Oct 20	SOUTH CAROLINA STATE	Wo2 1-0	404	24	Catherine Andrus	1	0	0	0	0	.000	0	.000	0	0-0
* Oct 25	at Howard WSOC	L 0-1	101	18	Antonietta Jackson	1	0	0	0	0	.000	0	.000	0	0-0
Nov 03	vs Howard	Lo2 1-2	0	13	Camille Billing	9	0	0	0	0	.000	0	.000	0	0-0
				7	Danielle Pierce	20	0	0	0	0	.000	0	.000	0	0-0
					Total	20	14	12	40	160	.087	65	.406	4	2-2
					Opponents	20	33	32	98	296	.111	151	.510	13	0-0

TEAM STATISTICS	NJIT	OPP
SHOT STATISTICS		
Goals-Shot attempts	14-160	33-296
Goals scored per game	0.70	1.65
Shot pct.	.087	.111
Shots on goal-Attempts	65-160	151-296
SOG pct.	.406	.510
Shots/Game	8.0	14.8
CORNER KICKS	69	83
PENALTY KICKS	2-2	0-0
PENALTIES		
Yellow cards	11	13
Red cards	0	0
ATTENDANCE		
Total	3236	2122
Dates/Avg Per Date	10/324	9/236
Neutral Site #/Avg	1/0	

#	Goalie	GP	Min.	GA	GAAvg	Saves	Pct	W-L-T	Sho
0	Larissa Beer	1	45:00	0	0.00	0	.000	0-0-0	0/0
1	Samantha Bersett	20	1861:46	33	1.60	115	.777	4-12-3	4/0
	Total	20	1906:46	33	1.56	118	.781	4-12-3	4
	Opponents	20	1906:46	14	0.66	51	.785	12-4-3	10

Goals by Period	1st	2nd	OT	OT2	Total
NJIT	7	6	0	1	14
Opponents	14	17	0	2	33

Shots by Period	1st	2nd	OT	OT2	Total
NJIT	66	85	5	4	160
Opponents	147	136	6	7	296

Saves by Period	1st	2nd	OT	OT2	Total
NJIT	55	59	3	1	118
Opponents	17	31	2	1	51

Corners by Period	1st	2nd	OT	OT2	Total
NJIT	32	36	1	0	69
Opponents	39	41	1	2	83

Fouls by Period	1st	2nd	OT	OT2	Total
NJIT	85	77	4	5	171
Opponents	68	84	5	9	166

RECORDS BOOK

SCHOOL RECORDS

Most Games—Career

75	Meryl Hershfield	2009-12
74	Sadie Mele	2007-10
73	Kori Washington	2007-10
72	Cielianna Pasiciel	2008-11
	Christi Taylor	2007-10
	Erika Taugher	2004-08
70	Gechi Ukaegbu	2009-12
64	Erin Morris	2009-12
65	Erin Salgado	2002-05
62	Amanda Bayiokos	2004-07
	Briana Morales	2005-09
60	Katie DeRosa	2005-08
59	Jennifer Herrera	2000, 2002-04
57	Sara Buchala	2001-04

Most Games—Season

20	5 tied	2012
19	3 tied	2012
	9 tied	2011
	6 tied	2008
	6 tied	2007

Most Goals—Career

16	Erika Taugher	2004-08
	Cathy Wasko	2001
	Erin Salgado	2002-05
12	Kori Washington	2007-10
	Karina Merchan	2001-02
10	Gechi Ukaegbu	2009-12
9	Jillian Misiunas	2002-04
8	Daisy Calderon	2000-01, 03
	Valerie DeAngelis	2000
7	Anna Tomczak	1999-2001
	Mary Caron	1998-99

Most Goals—Season

13	Cathy Wasko	2001
12	Karina Merchan	2001
8	Vallerie DeAngelis	2000
6	Erika Taugher	2004
	Erika Taugher	2005
5	Erin Salgado	2002
	Daisy Calderon	2001
	Anna Tomczak	2001
	Kori Washington	2007

Most Goals—Game

5	Cathy Wasko vs. Mt. St. Vincent,	9/7/01
4	Karina Merchan vs. St. Elizabeth,	10/15/01

Most Assists—Career

15	Erika Taugher	2004-08
10	Jayna Misiunas	2002-04
	Karina Merchan	2001-02
9	Cathy Wasko	2001
8	Anna Tomczak	1999-2001
	Meryl Hershfield	2009-12
7	Jillian Misiunas	2002-04
	Sarah Buchala	2001-04
	Erin Salgado	2002-05
5	Kori Washington	2007-10
4	Linda Flores	2000-01
	Emma Vinski	2005-08

Most Assists—Season

9	Cathy Wasko	2001
7	Karina Merchan	2001
6	Jayna Misiunas	2003
5	Erika Taugher	2004
	Sarah Buchala	2001

Most Assists—Game

4	Cathy Wasko vs. Mt. St. Vincent,	9/7/01
3	Erika Taugher vs. Wagner,	9/10/08

Most Points—Career

47	Erika Taugher	2004-08
35	Cathy Wasko	2001
34	Karina Merchan	2001-02
33	Erin Salgado	2002-05
29	Kori Washington	2007-10
27	Jillian Misiunas	2002-04
23	Gechi Ukaegbu	2009-12
22	Anna Tomczak	1999-2001
19	Vallerie DeAngelis	2000
17	Sarah Buchala	2001-04
16	Jayna Misiunas	2002-04
	Emma Vinski	2005-08

Most Points—Season

35	Cathy Wasko	2001
31	Karina Merchan	2001
19	Vallerie DeAngelis	2000
17	Erika Taugher	2004
15	Erika Taugher	2005
13	Daisy Calderon	2001
	Anna Tomczak	2001
12	Kori Washington	2007
11	Erin Salgado	2002
	Jessi Wilkinson	2001

Most Points—Game

10	Cathy Wasko vs. Mt. St. Vincent,	9/7/01
8	Karina Merchan vs. St. Elizabeth,	10/15/01

Most Shots—Season

64	Cathy Wasko	2001
----	-------------	------

Most Shots—Game

15	Erin Salgado vs. Mt. St. Vincent,	10/17/02
----	-----------------------------------	----------

Most Games as Goalkeeper—Career

74	Sadie Mele	2007-10
38	Daisy Calderon	2000-01, 03

Most Solo Shutouts—Season

7	Bruna Lotufo	2005
3	Samantha Bersett	2012
	Sadie Mele	2009
	Sadie Mele	2007

Most Saves—Career

437	Sadie Mele	2007-10
296	Daisy Calderon	2000-01, 03

Most Saves—Season

167	Daisy Calderon	2000
155	Kate Crowley	1999
152	Kate Duncan	2002
140	Sadie Mele	2008

Most Saves—Game

15	Samantha Bersett vs. Utah Valley,	10/5/12
	Bruna Lotufo vs. IPFW,	8/31/06
	Ketsia Mesidor vs. Bridgeport,	9/17/97

Most Goalkeeper Wins—Career

17	Sadie Mele	2007-10
10	Daisy Calderon	2000-01, 03
9	Bruna Lotufo	2005-06
6	Joy Intasamakul	2001

Most Goalkeeper Wins—Season

8	Bruna Lotufo	2005
7	Sadie Mele	2009



SCHOOL RECORDS

MISCELLANEOUS INDIVIDUAL RECORDS

Most Hat Tricks, Career

2, Cathy Wasko, 2001

Most Hat Tricks, Season

2, Cathy Wasko, 2001

Most Game Winning Goals, Career

3, Cathy Wasko, 2001 & Erika Taugher, 2004

Most Game Winning Goals, Season

3, Cathy Wasko, 2001 & Erika Taugher, 2004

Fastest Two Goals

1:23, Dinah Kotei at New Jersey City, 9/7/02

Fastest Three Goals

12:20, Cathy Wasko vs. CCNY, 10/1/01

Longest Goal-Scoring Streak

3, Cathy Wasko, 2001 and Jessi Wilkinson, 2001

Longest Point-Scoring Streak

3, five times

TEAM RECORDS

Most Victories: 8, 2005
Fewest Losses: 6, 2005
Most Ties: 3, 2005, 2012
Best Winning Percentage: .559, 2005
Most Consecutive Victories: 3, Oct. 18

to Oct. 25, 2009; Sept. 28 to Oct. 5, 2005

Most Shutouts: 7, 2005
Most Consecutive Shutouts: 3, 2005
Most Goals, Game: 9 vs. CCNY, 10/1/01
Most Shots, Game: 50 vs. Mount St.

Vincent, 10/6/04

Most Goals, Season: 43, 2001
Fewest Goals Allowed, Season: 25, 2009
Fastest Two Goals: 0:47 at Delaware State

10/17/03 (Erin Salgado, Maura Finn)

Fastest Three Goals: 5:23 vs. CCNY

10/1/01 (Cathy Wasko 2, Karina Merchan)

Fastest Goal From Start of Game: 3:15 vs. Mercy, 9/8/03 (Maura Finn)

ALL-TIME COACHING RECORDS

YEAR	OVERALL RECORD	HEAD COACH	CONFERENCE	MVP	CAPTAINS
<i>NCAA Division III era (1 year)</i>					
1996	0-12	Dan Kilday	WIAC/IAC	Natalie Rodriguez	N/A
<i>NCAA Division II era (9 years)</i>					
1997	0-13	Ralph Choonoo	NYCAC (0-8/9th)	Janina Alvarez	N/A
1998	1-10	Jean Pierre	NYCAC (0-8/9th)	Natalie Rodriguez	N/A
1999	1-10	Tom Romano	NYCAC (0-9/10th)	Veta Obazenu	N/A
2000	3-13	Tom Romano	CACC (1-9/t10th)	Daisy Calderon	Ana Tomczak
2001	6-9	Tom Romano	CACC (1-8/t9th)	Cathy Wasko	Ana Tomczak
2002	4-13	Tom Romano	CACC (1-9/10th)	Erin Salgado	Sarah Buchala, Erin Salgado
2003	2-12-1	Tom Romano	CACC (1-9/t10th)	Lisa Kling	Sarah Buchala, Katie Duncan
2004	5-10-1	Alyssa Radu	CACC (2-7)	Katie Hepfinger	Sarah Buchala, Katie Duncan, Erin Salgado
2005	8-6-3	Alyssa Radu	CACC (7-2-2)	Amanda Bayiokos	Erin Salgado
<i>2005 Postseason: ECAC Division II Quarterfinal</i>					
<i>NCAA Division I era (7 years; ongoing)</i>					
2006	1-13-1	Alyssa Radu	Independent	Cynthia Bayiokos	Dena Baskous, Cynthia Bayiokos
2007	4-14-1	Alyssa Radu	USC (2-2-1)	Dena Baskous	Dena Baskous
2008	2-16-1	Kevin Leacock	USC (1-3-1)	Sadie Mele	Emma Vinski, Erika Taugher, Melissa Paul, Briana Morales
2009	7-9-2	Kevin Leacock	GWC (4-1-1/1st East)	Sadie Mele	Game Captains
2010	4-13-1	Kevin Leacock	GWC (3-3-0/2nd East)	Sadie Mele	Game Captains
2011	2-17-0	Sergio Gonzalez	GWC (1-5-0/7th)	N/A	Game Captains
2012	4-13-3	Sergio Gonzalez	GWC (2-3-0/4th)	Jenny Cislo	Game Captains

Conference notes:

--For 1996 in NCAA Division III, NJIT held membership in both the WIAC (Women's Intercollegiate Athletic Conference) and IAC (Independent Athletic Conference; the IAC sponsored championship competition in sports for both genders).

--In 1997, moving to NCAA Division II, NJIT joined the New York Collegiate Athletic Conference, which later changed its name to the current East Coast Conference. NJIT moved from the NYCAC to the CACC (Central Atlantic Collegiate Conference) in 2000 and remained there until reclassifying to NCAA Division I.

--In 2006 (1st first year in NCAA Division I), NJIT was an independent. In 2007, NJIT was a founding member of the USC (United Soccer Conference), a one-sport alliance of programs that previously were independents. In 2009, when the GWC (Great West Conference) became a multi-sport league, it absorbed the USC, with those teams forming an Eastern Division in women's soccer (NJIT joined the GWC in multiple sports, while the other USC teams joined for women's soccer only). In 2011, the GWC dropped its divisional format for women's soccer.

RECORDS BOOK

DIVISION I RECORDS

Most Games—Career

75	Meryl Hershfield	2009-12
74	Sadie Mele	2007-2010
73	Kori Washington	2007-2010
72	Cielianna Pasiciel	2008-11
	Christi Taylor	2007-2010
70	Gechi Ukaegbu	2009-12
66	Mary Munoz	2007-2010
64	Erin Morris	2009-12
56	Amanda Redden	2010-pres.
55	Erin Schmitt	2010-pres.
53	Piper Lunan	2008-2010
45	Briana Morales	2006-2009
43	Michelle Borth	2007-2010
39	Erika Taugher	2006-2008
38	Emma Vinski	2006-2008

(Note: Erika Taugher and Emma Vinski began their careers in NJIT's Division II era. Totals and years listed in this section are for their Division I competition only)

Most Games—Season

20	5 tied	2012
19	3 tied	2012
	9 tied	2011
	7 tied	2008

Most Goals—Career

12	Kori Washington	2007-2010
10	Gechi Ukaegbu	2009-12
5	Emma Vinski	2006-2008
4	Amanda Dotten	2009, 2010

(Note: Emma Vinski began her career in NJIT's Division II era. Totals and years listed in this section are for her Division I competition only)

Most Goals—Season

5	Kori Washington	2007
4	Amanda Dotten	2010
	Kori Washington	2009

Most Assists—Career

8	Meryl Hershfield	2009-12
7	Erika Taugher	2006-2008
5	Kori Washington	2007-2010
4	Emma Vinski	2006-2008
3	Madeline Griep	2012-present

Most Assists—Season

4	Erika Taugher	2008
3	Madeline Griep	2012
3	Piper Lunan	2010
	Meryl Hershfield	2010
3	Amanda Dotten	2009
3	Emma Vinski	2008
3	Erika Taugher	2007

Most Points—Career

29	Kori Washington	2007-2010
23	Gechi Ukaegbu	2009-12
15	Amanda Dotten	2009, 2010
15	Erika Taugher	2006-2008
14	Emma Vinski	2006-2008

(Note: Erika Taugher and Emma Vinski began their careers in NJIT's Division II era. Totals and years listed in this section are for their Division I competition only)

Most Points—Season

12	Kori Washington	2007
10	Kori Washington	2009
	Erika Taugher	2008
8	Gechi Ukaegbu	2009
	Piper Lunan	
7	Gechi Ukaegbu	2012
	Amanda Dotten	2009
	Emma Vinski	2008
	Emma Vinski	2007

Most Saves—Career

437	Sadie Mele	2007-2010
115	Samantha Bersett	2012-pres.
83	Bruna Lotufo	2006
69	Angelica Sepulveda	2006

Most Saves—Season

140	Sadie Mele	2008
123	Sadie Mele	2007
115	Samantha Bersett	2012
90	Sadie Mele	2010
84	Sadie Mele	2009

TEAM RECORDS

Most Victories: 7, 2009

Fewest Losses: 9, 2009

Most Ties: 3, 2012

Best Winning Percentage:

.444 (7-9-2) 2009

Most Consecutive Victories:

3, Oct. 18 to Oct. 25

Most Shutouts: 3, 2007, 2009, 2012

Most Consecutive Shutouts:

2, 2007

Most Goals, Game:

5 vs. Delaware State (Oct. 23); vs. Howard (Oct. 24, 2007)

Most Goals, Season: 23, 2009

Most Shots, Game:

27 vs. South Carolina State (Nov. 7, 2007)

Most Shots, Season: 226, 2009

Most Saves, Game:

15 at Utah Valley (Oct. 5, 2012); 15, at IPFW (Aug. 31, 2006)

Most Saves, Season: 143, 2006

(Division I competition began in 2006)

DIVISION I SUPERLATIVES

NJIT

14 vs. Iona (8.25.06)

15 vs. Howard, (10.24.07)
5 vs. Howard, (10.24.07)
5 vs. Delaware State (10.23.09)

5 vs. Howard, (10.24.07)
5 vs. Wagner (9.10.08)
31 vs. South Carolina State (11.2.07)
20 vs. South Carolina State (11.2.07)
15 at Dartmouth (9.20.12)
15 at Utah Valley (10.5.12)
at IPFW (8.31.06)
12 vs. Delaware State (10.11.12)
23 vs. South Carolina State (11.2.07)

TEAM

Points

Points

Goals

Assists

Shots

Shots on Goal

Saves

Corner Kicks

Fouls

Opponents

13, Long Island Univ. (9.1.10)

13, Central Conn. State (9.13.06)

25, Iona, (10.3.06)

7, North Dakota State (10.30.06)

7, Iona (10.13.06)

7, Monmouth (10.12.08)

11, Iona, (10.13.06)

46, IPFW, (8.31.06)

21, IPFW, (8.31.06)

19, South Carolina State (11.2.07)

18, Drexel, (9.19.06)

17, South Carolina State (11.2.07)

INDIVIDUALS

Points

5, Kori Washington vs. Howard (10.24.07)

Goals

2, Kori Washington vs. South Carolina State (11.7.07)

2, Gechi Ukaegbu at Delaware State (10.23.09)

Assists

3, Erika Taugher vs. Wagner (9.10.08)

Shots

8, Amanda Dotten vs Howard (10.25.09)

Shots on Goal

4, four tied

Saves

15, Samantha Bersett vs. Utah Valley (10.5.12)



ALL-TIME VS. OPPONENTS

Adelphi	0-3	Fairleigh Dickinson	0-2	Molloy	0-4	Saint Peter's	4-2-1
UAlbany	0-2	FDU-Madison	0-1	Monmouth	1-5	St. Anselm	0-1
Allentown	0-2	Felician	1-5	Mount St. Mary's (MD)	0-1-2	St. Elizabeth	3-1
Army	0-3	Georgian Court	0-4-1	Mount St. Vincent	5-2	Saint Joseph's (PA)	0-2
Binghamton	0-2	Goldey-Beacom	0-5	Navy	0-1	St. Joseph's-Patchogue	0-1
Bloomfield	6-4	Green Mountain	0-1	North Dakota	0-2	St. Rose	0-5
Bridgeport	0-1	Holy Family	0-6	North Dakota State	0-2	St. Thomas Aquinas	0-2
Bryant	1-2	Houston Baptist	0-4	NYIT (NY Tech)	0-4	Southampton	0-3
Caldwell	0-5-1	Howard	4-5-1	New Jersey City	2-0-1	Stevens	0-1
Canisius	0-1	Iona	0-5-1	Nyack	0-7	Stony Brook	0-0
Centenary (NJ)	0-1	IPFW	0-1	Penn	0-2	Temple	0-1
CCNY	1-0	Lafayette	0-4-1	Philadelphia (Phila. Textile)	0-5	Utah Valley	0-7
Charlotte (UNC Charlotte)	0-1	La Salle	0-2	Philadelphia Biblical	2-0	VMI	0-0
Columbia	0-1	Lehigh	0-2	Post (CT)	1-4	Wagner	1-5
Concordia (NY)	0-5	LIU Brooklyn	0-2	Purchase	2-1	Wilmington (DE)	1-4
Cornell	0-0	LIU Post (CW Post)	0-3	Queens (NY)	0-4		
Dartmouth	0-1	Longwood	0-4-1	Quinnipiac	0-3-1	2013 opponents in bold	
Delaware State	9-1	Marist	0-1	Rhode Island	0-1		
Dominican (NY)	0-5	Marshall	0-1	Rider	1-2-1		
Drexel	1-3	Manhattan	0-1	Siena	0-1		
Duquesne	0-0	Mercy	1-3	South Carolina State	4-4-1		

ALL-TIME ALL CONFERENCE HONORS

Great West Conference Sportsmanship Award

2010 Sadie Mele

Great West Conference Defensive Player of the Year (East)

2010 Sadie Mele

2009 Sadie Mele

Great West Conference Offensive Player of the Year (East)

2010 Piper Lunan

Great West Conference

2012 Meryl Hershfield (1st)

2012 Gechi Ukaegbu (2nd)

2012 Alex Adam (2nd)

Great West Conference (East Division)

2010 Sadie Mele

2010 Piper Lunan

2009 Sadie Mele

2009 Cielianna Pasiciel

2009 Piper Lunan

Great West Conference All-Academic Team

2012 Meryl Hershfield

2012 Jenny Cislo

2011 Anna Kornmuller

2011 Meryl Hershfield

2011 Erin Morris

2010 Amanda Dotten

2010 Erin Morris

2010 Christi Taylor

2010 Meryl Hershfield

2009 Christi Taylor

2008 Erika Taugher

2008 Christi Taylor

College Sports Madness Great West Conference

2012 Gechi Ukaegbu (2nd)

2012 Madeline Griep (2nd)

2012 Samantha Bersett (2nd)

United Soccer Conference

2007 Dena Baskous (1st)

2007 Erika Taugher (2nd)

2007 Sadie Mele (3rd)

2007 Emma Vinski (3rd)

2007 Kori Washington (3rd)

2007 Michelle Borth (3rd)

2007 Xiomara Medina (3rd)

NSCAA Division II All-New England

2005 Dena Baskous (2nd)

Central Athletic Collegiate Conference

2005 Dena Baskous (1st)

2005 Bruna Lotufo (2nd)

2005 Erika Taugher (3rd)

2002 Erin Salgado (HM)

2000 Vallerie DeAngelis (HM)

Women's Intercollegiate Athletic Conference

1996 Wendy Gruenewald,

Natalie Rodriguez, Maiysha Ware

Independent Athletic Conference

1996 Natalie Rodriguez

NCAA Statistical Champion

2000 Daisy Calderon, saves per game

RECORDS BOOK

YEAR-BY-YEAR



Emmy Hattle

1996 (0-11)

	MT. ST. VINCENT	L	2-3
	St. Joseph's (LI)+	L	
	at Allentown	L	0-1
	at Molloy	L	0-9
10/2	STEVENS TECH+	L	0-3
	at Allentown (ot)	L	0-1
	at St. Elizabeth	L	0-4
	at FDU-Madison	L	0-3
	at Centenary (NJ)	L	0-9
	at Nyack	L	0-4
	at Bloomfield	L	0-3

*WIAC +IAC

Coach: Dan Kilday

1997 (0-13)

9/2	at Nyack	L	0-11
9/6	at Adelphi	L	0-14
9/14	at Albany	L	0-8
9/17	BRIDGEPORT	L	0-8
9/24	at Bloomfield	L	
9/30	PHILA. TEXTILE*	L	1-10
10/4	ST. ROSE*	L	0-5
10/11	SOUTHAMPTON*	L	
10/15	at St. Thomas Aquinas	L	
10/18	at Molloy*	L	0-12
10/24	CW POST*	L	0-5
10/26	at New York Tech*	L	0-16
11/1	at Concordia (NY)*	L	0-7

*NYAC (0-8)

Coach: Ralph Choonoo

1998 (0-10)

9/12	BLOOMFIELD	L	0-5
9/16	at CW POST*	L	0-13
9/20	ST. THOMAS AQUINAS	L	0-5
9/26	at St. Rose*	L	0-13
10/9	at Molloy*	L	0-8
10/14	NEW YORK TECH*	L	0-8
10/17	CONCORDIA (NY)*	L	0-4
10/21	ADELPHI*	L	fft.
10/24	at Southampton*	L	0-8
10/31	PHILA. TEXTILE*	L	0-14

*NYCAC (0-8)

1999 (1-10)

9/11	CALDWELL	L	1-8
9/13	at Molloy*	L	0-10
9/23	at Bloomfield	W	2-1
9/26	ST. ROSE*	L	0-12
9/29	at Queens (NY)*	L	0-6
10/9	at Concordia (NY)*	L	0-8
10/14	SOUTHAMPTON*	L	0-6
10/17	at Adelphi*	L	1-7
10/23	CW POST*	L	0-21
10/25	PHILADELPHIA*	L	1-13
10/30	at New York Tech*	L	0-9

*NYCAC (0-9)

Coach: Tom Romano

2000 (3-13)

9/11	QUEENS (NY)	L	0-5
9/13	TEIKYO POST*	L	0-6
9/16	at Concordia (NY)	L	1-3
9/18	at Bloomfield* (ot)	L	1-2
9/21	CONCORDIA (NY)	L	0-2
9/25	at Mercy	L	1-2
9/27	GEORGIAN COURT*	L	0-7
9/30	at Holy Family*	L	0-8
10/2	MT. ST. VINCENT	W	3-1
10/4	at Dominican (NY)*	L	0-7
10/7	WILMINGTON (DE)* (ot)	W	2-1
10/11	at Caldwell*	L	0-5
10/14	FELICIAN*	L	0-3
10/16	at Mt. St. Vincent	W	6-0
10/18	NYACK*	L	0-4
10/22	at Goldey-Beacom*	L	0-8

*CACC (1-9)

Coach: Tom Romano

2001 (6-9)

9/7	at Mt. St. Vincent	W	7-1
9/10	MERCY	L	0-5
9/17	PHILADELPHIA BIBLEW		5-2
9/19	at Bloomfield*	W	2-0
9/22	at Teikyo Post*	L	0-8
9/26	at Nyack*	L	2-5
9/29	HOLY FAMILY*	L	0-7

10/1	CCNY	W	9-0
10/3	GOLDEY-BEACOM*	L	1-3
10/5	GEORGIAN COURT*	L	1-2
10/10	at Dominican (NY) *	L	0-8
10/15	ST. ELIZABETH	W	8-0
10/20	at Wilmington (DE) *	L	2-7
10/22	MT. ST. VINCENT	W	6-0
10/25	FELICIAN*	L	0-7

*CACC (1-8)

Coach: Tom Romano

2002 (4-13)

8/31	at Saint Rose	L	0-8
9/1	vs. Green Mountain	L	0-6
9/7	at New Jersey City	W	3-0
9/11	at Queens (NY)	L	0-2
9/14	at Felician*	L	0-5
9/18	BLOOMFIELD* (ot)	W	3-2
9/21	TEIKYO POST*	L	1-5
10/5	at Georgian Court*	L	1-3
10/7	at Mt. St. Vincent	L	2-4
10/9	DOMINICAN (NY) *	L	0-7
10/14	at Goldey-Beacom*	L	0-8
10/19	WILMINGTON (DE) *	L	0-6
10/21	ST. ELIZABETH	W	3-0
10/23	PURCHASE	W	2-0
10/27	at Holy Family*	L	1-5
10/30	NYACK*	L	2-3
11/1	at Caldwell*	L	0-3

*CACC (1-9)

Coach: Tom Romano



Abi Fakolujo

YEAR-BY-YEAR

2003 (5-12-1)

9/6	NEW JERSEY CITY (2ot)	T	1-1
9/8	at Mercy	L	1-3
9/10	QUEENS (NY)	L	0-6
9/17	at Bloomfield*	W	3-0
9/20	at Teikyo Post*	L	0-4
9/24	at Nyack*	L	0-5
9/27	HOLT FAMILY*	L	0-6
9/29	at Purchase	L	0-4
10/1	GOLDEY-BEACOM*	L	0-5
10/4	GEORGIAN COURT*	L	0-3
10/6	MT. ST. VINCENT	W	6-0
10/11	CALDWELL*	L	0-6
10/13	FELICIAN*	L	1-5
10/17	at Delaware State	W	5-1
10/18	at Wilmington (DE) *	L	0-8
10/20	at St. Elizabeth (2ot)	W	2-1
10/24	at Dominican (NY) *	L	0-5
10/25	PHILA. BIBLICAL	W	2-0

*CACC (1-9)

Coach: Tom Romano

2004 (5-10-1)

8/29	ST. ANSELM COLLEGE	0-8
9/4	NYIT	L 0-3
9/8	at Felician*	L 2-3
9/11	at Georgian Court* (2ot)	T 0-0
9/15	BLOOMFIELD*	W 1-0
9/25	at Holy Family *	L 0-5
9/27	TEIKYO POST*	W 1-0
9/29	at Goldey-Beacom*	L 0-3
10/6	DOMINICAN (NY) *	L 0-2
10/9	at Caldwell*	L 0-2
10/13	at NJCU	W 5-1
10/16	MERCY	W 1-0
10/17	ST. ROSE	L 0-1
10/20	WILMINGTON (DE) *	L 0-4
10/23	NYACK* (NJIT DAY)	L 1-2
10/31	PURCHASE	W 4-1

*CACC (2-7-1)

Coach: Tom Romano

2005 (8-6-3)

8/26	at Drexel	L	0-6
9/4	ST. ANSELM	L	0-5
9/7	FELICIAN*	W	3-0
9/10	at NYIT (ot)	L	1-2
9/14	BLOOMFIELD*	W	2-0
9/17	at Post * (2ot)	T	0-0
9/21	at Nyack*	W	1-0
9/24	HOLY FAMILY*	L	0-2
10/1	GEORGIAN COURT*	W	3-0
10/5	at Dominican (NY) *	W	1-0
10/8	CALDWELL* (2ot)	T	1-1
10/15	DELAWARE STATE	W	3-1
10/19	at Wilmington (DE) *	W	1-0
10/23	at Saint Rose	L	0-5
10/27	PHILADELPHIA*	L	0-2

11/9 vs. Philadelphia # (2ot) T 1-1

*CACC (7-2-2) #ECAC Division II Tourn.

Coach: Alyssa Radu

2006 (1-13-1)

8/25	MARSHALL	L	1-10
8/31	at IPFW	L	0-6
9/1	vs. Utah Valley State	L	0-6
9/8	MANHATTAN	L	0-3
9/13	at Iona	L	0-7
9/15	vs. Siena	L	0-6
9/17	at Albany	L	1-6
9/19	at Drexel	L	0-2
9/24	at UNC-Charlotte	L	0-5
10/1	at Howard	W	3-1
10/4	at Quinnipiac	L	0-4
10/14	NYIT	L	1-2
10/19	MONMOUTH	L	0-3
10/21	at St. Peter's (2ot)	T	0-0 (
10/30	NORTH DAKOTA STATE	L	0-7

Coach: Alyssa Radu

2007 (4-14-1)

9/2	at LIU	L	0-1
9/7	ALBANY (ot)	L	1-2
9/9	QUINNIPAC	L	0-1
9/15	IONA	L	0-1
9/19	DREXEL	L	0-1
9/22	at Longwood*	L	0-1
9/25	at Binghamton	L	1-3
9/28	at Monmouth	L	0-5
9/30	at Wagner	L	1-2
10/5	at LaSalle	L	0-4
10/7	at Navy	L	0-3
10/14	at North Dakota State	L	1-3
10/19	at Utah Valley*	L	0-5
10/24	HOWARD*	W	5-1
10/26	at Delaware State*	W	2-0
11/2	SOUTH CAROLINA STATE*	T	1-1
11/4	SAINT PETER'S	W	2-0
11/7	vs. South Carolina State^	W	4-0
11/9	at Utah Valley^	L	0-3

* USC (2-2-1) ^ USC Tournament

Coach: Alyssa Radu

2008 (2-16-1)

8/26	at Army	L	1-3
8/29	at Saint Peter's	L	0-1
8/31	BINGHAMTON	L	0-2
9/5	CANISIUS	L	0-3
9/7	at Drexel	L	0-3
9/10	WAGNER	W	4-2
9/12	MONMOUTH	L	0-7
9/17	at Mount St. Mary's	L	2-5
9/18	at La Salle	L	0-3
9/21	at Quinnipiac	L	0-6
9/26	at Lafayette	L	0-2
9/28	at Iona	L	1-2

10/5 at South Carolina State*W 2-0

10/8 UTAH VALLEY* L 1-2

10/11 LONGWOOD* (2ot) T 0-0

10/17 DELAWARE STATE* L 0-1

10/19 BRYANT L 1-3

10/26 at Howard* L 0-1

11/1 at Utah Valley^ L 0-4

* USC (1-3-1) ^ USC Tournament

Coach: Kevin Leacock

2009 (7-9-2)

8/28	at Army	L	0-3
8/30	at Canisius	L	0-1
9/4	DREXEL (2ot)	W	2-1
9/11	SAINT PETER'S	L	0-1
9/13	RIDER	W	2-0
9/18	MOUNT ST. MARY'S (2ot)T	1-1	
9/20	at Bryant	W	3-2
9/25	LAFAYETTE	L	0-1
9/28	IONA (ot)	L	1-2
10/2	SOUTH CAROLINA STATE *	W	2-1
10/4	at Howard * (2ot)	T	1-1
10/9	at South Carolina State *	L	0-1
10/18	DELAWARE STATE *	W	2-0
10/23	at Delaware State *	W	5-2
10/25	HOWARD *	W	2-0
10/30	at Wagner	L	0-3
11/1	at Longwood	L	1-2
11/6	NORTH DAKOTA ^	L	1-3

* GWC (5-2-1) ^ GWC Quarterfinals

Coach: Kevin Leacock



Jenny Cislo

RECORDS BOOK

YEAR-BY-YEAR

2010 (4-13-1)

8/27	MONMOUTH	L	0-2
8/29	at Saint Peter's	W	2-1
9/3	BRYANT (ot)	L	1-2
9/5	at Saint Josephs	L	0-3
9/10	WAGNER	L	0-1
9/12	at Mount St. Mary's (2ot)	T	1-1
9/17	at Lafayette	L	0-2
9/21	at Rider	L	2-5
9/24	ARMY	L	0-2
9/26	at Howard* (ot)	L	1-2
10/3	at Lehigh	L	0-6
10/8	at Delaware State*	W	4-3
10/15	SOUTH CAROLINA STATE*	L	0-2
10/17	LONGWOOD	L	1-3
10/22	DELAWARE STATE*	W	1-0
10/29	HOWARD*	W	2-1
10/31	at South Carolina State*	L	1-3
11/5	vs. Houston Baptist^	L	0-1

* GWC (3-3) ^ GWC Tournament

Coach: Kevin Leacock

2011 (2-17-0)

8/26	at Iona	L	1-3
8/30	at Wagner	L	1-2
9/2	RIDER	L	0-2
9/5	at Monmouth	L	0-6
9/9	at Fairleigh Dickinson	L	0-1
9/11	LAFAYTIE	L	0-1
9/14	LONG ISLAND	L	0-2
9/18	LEHIGH	L	0-2
9/22	SAINT PETER'S	W	2-1
9/25	SAINT JOSEPH'S	L	0-2
10/7	DELAWARE STATE*	W	2-0
10/9	at Longwood	L	0-2

10/12	at Penn	L	0-8
10/15	at South Carolina State*	L	0-1
10/20	HOWARD*	L	0-2
10/22	UTAH VALLEY*	L	1-4
10/27	at North Dakota*	L	0-2
10/29	at Houston Baptist*	L	0-1
11/4	at Houston Baptist^	L	0-1

*GWC (1-5) ^ GWC Tournament

Coach: Sergio Gonzalez

2012 (4-13-3)

8/17	at Saint Peter's	W	3-0
8/19	at Rider	L	0-1 (2OT)
8/24	MARIST	L	2-3
8/26	at Rhode Island	L	0-1
8/31	at Temple	L	0-1
9/2	MONMOUTH	W	2-1
9/7	QUINNIPIAC	T	0-0 (2OT)
9/9	WAGNER	L	1-3
9/14	FDU	L	1-3
9/16	IONA	T	1-1 (2OT)
9/20	at Dartmouth	L	0-5
9/23	at Lafayette	T	1-1 (2OT)
9/30	at UPenn	L	0-4
10/5	at Utah Valley*	L	0-2
10/7	COLUMBIA	L	0-2
10/11	DELAWARE STATE*	W	1-0
10/13	HOUSTON BAPTIST*	L	0-2
10/20	SO.CAROLINA STATE*	W	1-0 (2OT)
10/25	at Howard*	L	0-1
11/3	vs. Howard^	L	1-2 (2OT)

*GWC (2-3) ^GWC Tournament

Coach: Sergio Gonzalez



Amanda Redden



Kaelyn Gamel

ALL-TIME VARSITY ROSTER

[FIRST SEASON: 1996; COMPLETE THROUGH 2012]

A

ABERG, Elina 11
ADAM, Alex 12
 ALVAREZ, Janina 97,98
ANDRUS, Catherine 10, 11
 ARMSTRONG, Tama 96
 AUGUSTINE, Joann 96
 AWOKE, Hiywote 96,97,98,99

B

BABUCHIWSKI, Dorothy 03
 BALLOU, Nicole 99
 BARRETO, Michelle 00,01
 BASKOUS, Dena 05, 06, 07
 BAYIOKOS, Amanda 04, 05, 06, 07
 BAYIOKOS, Cindy 05, 06
 BECKER, Melissa 97,98
 BESTAWROS, Mariam 09, 11
 BHANDERI, Nilam 97,98,99
 BILLING, Camile 10, 11, 12
 BORSCHKE, Marissa 12
 BORTH, Michelle 07, 08, 09, 10
 BUCHALA, Sarah 01,02,03,04

C

CALDERON, Daisy 00,01,03
 CARON, Mary 98,99
 CHOY, Yvonne 96,97,98
CISLO, Jenny 11, 12
 CLOVIS, Darlene 00
 COHEN, Krista 05, 06, 07
 CORREA, Claudia 03
 CROWLEY, Kate 99
 CUBIAS, Marina 96

D

DeANGELIS, Vallerie 00
 DeROSA, Katie 05, 06, 07, 08
DELLAVALLE, Megan 11, 12
 DORN, Jennifer 00,01
 DOTTEN, Amanda 09, 10
 DUNCAN, Kate 02,04

E

ELLIOT, Laura 96,97

F

FAKOLUJO, Abi 12
 FARROW, Ann 96
 FERRERA, Michelle 11
 FINN, Maura 03,04
 FLORES, Linda 00,01

G

GAMMEL, Kaelyn 12
 GANNON, Amanda 07, 08
 GO, Jean 02
 GOLDMAN, Alexis 97,98,99,00
 GOUGH, Heather 01
 GRIFFITHS, Nadia 97,98,99
GRIEP, Madeline 12
 GRISWOLD, Kimberly 02
 GRUENEWALD, Wendy 96
 GUARDADO, Luisa 99
 GUISHARD, Corina 02

H

HATTLE, Emmy 12
 HENRY, Margarette 96,97,98
 HEPFINGER, Katie 04, 05, 06, 07
 HERMAN, Susan 97,98
 HERNANDEZ, Heather 00
 HERRERA, Jennifer 00,02,03,04
 HERSHFIELD, Meryl 09, 10, 11, 12
 HIGGINS, Teresa 06
 HORDYNSKY, Natalie 01
 HOUSER, Leila 99,00
 HOWE, Rebecca 00
 HOWELL-HARRIES, Kyrsten 07, 08, 09, 10

I

INTASAMAKUL, Joy 01,02

J

JONES, Kylie 11, 12
 JOY-WAY, Alida 96,98



Erin Schmitt

K

KALCZEWSKI, Jennifer 08, 09, 10, 11
 KLING, Lisa 03
 KORNMULLER, Anna 10, 11
 KOTEI, Dinah 02

L

LaBELLARTE, Christina 08, 10, 11
 LARGE, Katie 99
 LEIBEL, Katie 01
 LEICHTNAM, Elizabeth 02,03,04
 LEMARIE, Linda 97,98,99
 LOTUFO, Bruna 05, 06
 LUNAN, Piper 08, 09, 10

M

MACAULAY, Keri-Anne 04, 05
 MACIAS, Stephanie 04, 05, 07
 MAKLOUFI, Keltoum 99
 MARTINEZ, Dolores 00
 MAYFIELD, Taekia 00
 MEDINA, Xiomara 07
 MELE, Sadie 07, 08, 09, 10
 MENDOZA, Monica 00
 MERCHAN, Karina 01,02

RECORDS BOOK

ALL-TIME VARSITY ROSTER

[FIRST SEASON: 1996; COMPLETE THROUGH 2012]

MESIDOR, Ketsia 96,97,98
 MEVS, Carmina 99,00
 MISIUNAS, Jayna 02,03,04
 MISIUNAS, Jillian 02,03,04
 MORALES, Briana 05, 06, 07, 08
 MORRIS, Erin 09, 10, 11, 12
 MOTTA, Millie 09
 MOVING, Lisa 97,98
 MUNOZ, Mary 07, 08, 09, 10
 MURRAY, Amanda 11

N

NAITO, Chacha 09
 NOBLES, Chelsea 06

O

OBAZENU, Veta 99
 O'CONNOR, Jackie 99
 OSSA, Ana 03
 O'DWYER, Aine 05, 07

P

PARISI, Casey 10
 PASICIEL, Cieliana 08, 09, 10, 11
 PATEL, Lali 98
 PATEL, Sushreeta 97
 PAUL, Melissa 07, 09
PIERCE, Danielle 12
 POSSIBLE, Vicki 96,97,98
 PHILLIPS, Marie 98,99
 POWDHAR, Joanna 05, 06

R

RAGNI, Caitlyn 08, 09, 10, 11
 RAMIREZ, Magda 99
 RAPATSKI, Brandi 96
REDDEN, Amanda 10, 11, 12
 REEBER, Lisa 99
 REYNOLDS, Leigh 04
 RIBELIN, Nettie 00,01
 RIVERA, Betty 99,00
 RIVIRIEGO, Sheila 99
 RODRIGUES, Melanie 10
 RODRIGUEZ, Natalie 96,97,98,99

ROMANO, Mary Kate 02
 RUSCIANO, Sarah 07

S

SALGADO, Erin 02,03,04, 05
 SAMUEL, Jaky 08
SCHMITT, Erin 10, 11, 12
SEELY, Grace 11, 12
 SEPULVEDA, Angelica 05, 06, 07
 SIMEON, Verdane 96
 SMITH, Patricie 99
 SOLT, Karisa 01,02,03
 SOLU, Alyn 96,97,98
 STOLTZ, Heather 96

T

TALAI, Mina 03
 TAUGHER, Erika 04, 05, 07, 08
 TAYLOR, Christi 07, 08, 09, 10
 TOMCZAK, Anna 99,00,01
 TUDOR, Lauren 99
 TURNBULL, Breanna 06
TUSTIN, Rebecca 10, 12

U

UKAEGBU, Gechi 09, 10, 11, 12

V

VAZQUEZ, Nicole 11
 VICZIAN, Karoly 73, 74, 75
 VINSKI, Emma 05, 07, 08

W

WALLACE, Leah 96,98,99
 WARE, Maiysha 96,97,98
 WASKO, Cathy 01
 WASHINGTON, Kori 07, 08, 09, 10
 WHITWORTH, Elaine 01
 WHITWORTH, Elizabeth 01
 WIELAND, Rachel 96
 WILKINSON, Jessi 01
 WILLIAMS-WEIR, Erin 12
 WU, Peychi 97,98,99

Z

ZAMBRANO, Claudia 97,98
 ZIEMBA, Melissa 96

Returning players in bold

*Corrections welcome. Please contact
 Stephanie Pillari at pillari@njit.edu*



NJIT HALL OF FAME

Name	Grad. Year	Contribution	Sport (s)	Years Active	Year of Induction	Name	Grad. Year	Contribution	Sport (s)	Years Active	Year of Induction
BAKUN, Andrew I.	1982	Athlete/Asst. Coach	M-Soccer	1978-81/ 90-91	2005	IRIS, Herb	1951	Benefactor	--	--	2007
BAKUN, Myron	1967	Athlete	M-Soccer	1964-66	1991	KAMINSKY, Nicholas J.	1978	Athlete	Baseball	1975-78	2006
BARTH, Roland E.	1960	Athlete	M-Fencing	1957-59	2009	KASBARIAN, Raymond P.	1966	Founder/Athlete	Judo	1962-66	1989
			M-Soccer	1956-59		KETZNER, Robert Shelby	--	Coach	Rifle	1962-86	1987
BAUDER, Fred "Coach"	--	Coach	M-Basketball	1932-61	1989	KHOWAYLO, Alex	1969	Athlete	M-Soccer	1960-63	1996
BLUM, Raymond E.	1950	Distinguished Alumnus	Speedskating/ Cycling	--	1996	LUBETKIN, Charles "Tudy"	1953	Athlete	M-Basketball/ M-Track	1949-52	1994
						LYNCH, Robert K.	1984	Athlete/Coach	M-Fencing	1977-80/ 86-91	1993
BORJA, Hernan "Chico"	1981	Athlete	M-Soccer	1977-80	1986	MacDONALD, Dan	1984	Athlete	Baseball	1981-84	1992
BORNAKO, Gregory "Egor"	1970	Athlete	M-Fencing	1966-70	1987	OLSEN, Richard J.	1969	Athlete	M-Basketball	1965-69	1988
BOWSER, Hamilton V.	1952	Athlete	M-Fencing	1948-52	1989	OLSON, George R.	1977	Athlete	Baseball	1974-77	1987
BRADLEY, Thomas	1978	Athlete	M-Swimming	1974-78	1990	PAULIUS, Raymond V.	1985	Athlete	M-Soccer	1980-83	2006
BROWN, Andrew D.	1963	Athlete	M-Soccer	1956-59	2006	RODGERS, Tarik	1996	Athlete	M-Volleyball	1992-95	2010
CRIMMINS, David	1952	Athlete	M-Fencing	1948-52	2007	ROGERS, Warren	1988	Athlete	M-Basketball	1983-87	1993
CRUZ, Edward	1963	Athlete	M-Soccer	1959-62	1995	ROMULUS, Rudy	1991	Athlete	M-Volleyball	1988-91	1996
DAWSON, Marilyn E.	1986	Athlete	WVB/WBKB/SB	1982-86	1991	ROSS, Jonathan A.	1956	Athlete	M-Soccer	1953-55	2010
DeNICOLA, Carmine P.	1978	Athlete	Baseball	1975-78	2005	SARLO, Paul A.	1992	Athlete	Baseball	1989-91	2005
DeNURE, Dave	--	Coach	M-Volleyball W-Volleyball W-Basketball	1982-98 1986-90 1987-88	2009	SCHMID, John "Gene"	--	Asst Coach/Coach	Baseball	1968-72/ 73-97	2002
			M-Soccer/ M-Fencing	1956-60	1992	SIMON, J. Malcolm	--	Coach	M-Soccer	1955-83	1994
DeVITO, Louis	1960	Athlete						Director of Athletics	--	1983-94	
DIAS, Joe A.	1977	Athlete	M-Soccer	1973-76	1993	SKURLA, Peter J.	1941	Athlete	Bowling	1937-41	1992
DRURY, Eugene M.	1963	Athlete	M-Tennis	1960-63	1988	SORIANO, Gregory	1975	Athlete	M-Fencing	1968-72	2010
ENG, Katherine	1993	Athlete	W-Volleyball	1989-92	2007	SWANSON, Robert F.	--	Director of Athletics	--	1947-82	1986
ETIENNE, Yves	1979	Athlete	M-Volleyball	1976-78	1990	TAETZSCH, Robert	1952	Athlete	M-Fencing	1948-52	2007
FEHN, Gilbert F.	1940	Athlete	M-Basketball/ M-Tennis	1936-40	1992	TAETZSCH, William	1952	Athlete	M-Fencing	1948-52	2007
						TOSATO, Lawrence P.	1956	Athlete	M-Basketball/ Baseball	1952-56	1987
FITZGERALD, Joseph M.	--	Coach/Asst. Coach	M-Basketball	1961-66/ 52-61	1986	TUBELLO, Jeffrey	1976	Athlete	Rifle	1972-76	1988
FLEISHER, Seymour "Zoom"	1951	Athlete	M-Basketball	1947-51	1992	VAN WRIGHT, Nevea	1997	Athlete	W-Basketball	1991-96	2005
GAGLIARDO, Salvatore A.	1985	Athlete	M-Basketball	1981-85	1995	WALSH, John J.	1966	Athlete	MSoc/MBKB/ Baseball	1962-66	1986
GALLAGHER, Thomas G.	1985	Athlete	M-Basketball	1981-85	1991	WASNIEWSKI, Frank	1980	Athlete	M-Tennis	1977-80	1990
GIOVANNOLI, Arnold L.	1953	Athlete	M-Basketball	1950-53	1993	WELGOS, Bob	1962	Athlete	M-Basketball/ Bowling	1959-62	2005
GOLDRICK PITT, Elizabeth M.	1990	Athlete	W-Volleyball/ Softball/WBKB/WTen	1985-90	1995	WOROBEC, Myron S.	1966	Athlete	M-Soccer	1962-65	1994
						YONEZUKA, Yoshishada	--	Founder/Coach	Judo	1962-?	1991
GRAZIANO, Jean M.	1989	Athlete	Softball	1986-89	2009	ZORN, Werner	1962	Athlete	M-Soccer	1958-61	1988
GRUENEWALD, Wendy A.	1997	Athlete	WBKB/Softball/ W-Volleyball/W-Soccer	1992-96	2003						
HAASE, Jay W.	1975	Athlete	M-Fencing	1971-75	1988						
HAMMOND, Kenneth W.	1979	Athlete	M-Soccer	1974-77	2003						
HANDWERKER, Andy	1963	Athlete	M-Soccer	1959-62	2002						
HAUSSER, Paul C.	--	Administrator Coach	-- Fencing/Baseball	1953-91 1954-88/53-72	1990	Teams	Year	Accomplishments		Year of Induction	
HUBEY, Ali	1972	Athlete	M-Soccer	1968-71	1990	Men's Soccer	1960	NAIA co-National Champion		1988	
HURTADO, Fabian	1975	Athlete	M-Soccer	1970-74	1987	Men's Basketball	1981-82	NJIT's first ECAC and IAC champion		1990	
						Baseball	1982	NJIT's second ECAC and IAC champion		1993	

Athletic Administration & Coaching Staff

SENIOR ADMINISTRATION

Lenny Kaplan	Director of Athletics
Alexis Schug	Associate Athletic Director/ Senior Women Administrator
Joe Caiola	Assistant Director of Athletics/Business/Facilities
Tim Camp	Assistant Athletic Director for Sports Information
Jayson Smikle	Assistant Athletic Director for Compliance
Wenda Noel-Lane	Administrative Assistant for the Director of Athletics
Mike Siegel	Faculty Athletic Representative
Brian Callahan	Senior Women Administrator Assistant Director of Physical Education

ACADEMIC SUPPORT

Sandra Taylor	Associate Director CAPE – Athlete Academic Advisor
Mike Spisto	Eligibility Certification Officer/Academic Advisor for Athletics

ATHLETIC TRAINING

Matt Koscs	Head Athletic Trainer
Paul Grayner	Assistant Athletic Trainer
Melissa Maskery	Assistant Athletic Trainer
Brittany Vorndran	Assistant Athletic Trainer

COMPLIANCE

Alexis Schug	Associate Athletic Director/ Senior Women Administrator
Jayson Smikle	Assistant Athletic Director for Compliance

DEVELOPMENT

Darlene Lamourt	Development Officer for Athletics
-----------------	--------------------------------------

FLEISHER ATHLETIC CENTER

Shannon Abraham	Operations Manager/Tickets
Jonathan Walker	Front Desk
Courtney Caden	Receptionist

SPORTS INFORMATION

Tim Camp	Assistant Athletic Director for Sports Information
Stephanie Pillari	Assistant Sports Information Director

STRENGTH AND CONDITIONING

Dan Huff	Head Strength and Conditioning Coach
----------	---

COACHING STAFF DIRECTORY

BASEBALL

Brian Guilian	Head Coach
Robbie McClellan	Assistant Coach

MEN'S BASKETBALL

Jim Engles	Head Coach
Brian Kennedy	Assistant Coach
Jesse Agel	Assistant Coach
Michael Brown	Assistant Coach
TJ Tibbs	Director of Basketball Operations

WOMEN'S BASKETBALL

Steve Lanpher	Head Coach
Mark McCaleb	Assistant Coach
LaKea Jones	Assistant Coach
Epiphany Smith	Assistant Coach

MEN'S & WOMEN'S CROSS COUNTRY

Al Alonso	Head Coach
John Crawford	Assistant Coach

MEN'S AND WOMEN'S FENCING

Yefim Litvan	Head Coach
Jason Henderson	Assistant Coach

MEN'S SOCCER

Didier Orellana	Head Coach
David Janezic	Assistant Coach
Hernando Santamaria	Assistant Coach

WOMEN'S SOCCER

Mandi Ridsen	Head Coach
Erwin van Bennekom	Assistant Coach
Katrina Smedley	Assistant Coach
Tim Verschuren	Volunteer Coach

MEN'S SWIMMING

Michael Lawson	Head Coach
Mark Albright	Assistant Coach
Daniel Schittone	Assistant Coach

MEN'S AND WOMEN'S TENNIS

Mike Sowter	Head Coach
Carmen Selaru-Stewart	Assistant Coach
Bernie Jones	Assistant Coach

MEN'S AND WOMEN'S TRACK AND FIELD (INDOOR & OUTDOOR)

Al Alonso	Head Coach
John Crawford	Assistant Coach

MEN'S VOLLEYBALL

Ryan McNeil	Head Coach
Francesca Garay	Graduate Assistant Coach

WOMEN'S VOLLEYBALL

JR Martins	Head Coach
Poline Mackiewicz	Assistant Coach

Directions to NJIT

FOR GPS USERS

The address for Lubetkin Field at Mal Simon Stadium, the Estelle and Zoom Fleisher Athletic Center, and the Naimoli Family Athletic and Recreational Facility is 80 Lock Street, Newark, NJ, 07102.

BY CAR

New Jersey Turnpike: Driving North from South Jersey: Take NJ Turnpike to Exit 13A Newark Airport. After toll stay to left and follow signs to Rt. 1 & 9 North. You will merge onto Rt. 1 & 9 North. Airport will be on right. Follow signs for downtown Newark and Rt. 21 North-(left lane exit ramp). Downtown Newark will be in front of you. NYC will be off to your right. Follow Rt. 21 North (McCarter Highway). Turn left on Raymond Blvd. Follow Raymond Blvd. past Warren Street traffic light and Fleisher Athletic Center, Naimoli Center, and Lubetkin Field at Mal Simon Stadium will be to your right (one soccer goal line runs along Warren Street and the soccer sideline parallels Lock Street).

New Jersey Turnpike: Driving South from North Jersey: Take exit 15W to Route 280 West, then follow Route 280 West directions.

Route 280 West: After drawbridge, take Exit 15A (Rt. 21 South - McCarter Highway). Follow Rt. 21 South to Raymond Blvd. Turn right on Raymond Blvd. Follow Raymond Blvd. past Warren Street traffic light and Fleisher Athletic Center, Naimoli Center, and Lubetkin Field at Mal Simon Stadium will be to your right (one soccer goal line runs along Warren Street and the soccer sideline parallels Lock Street).

Route 280 East: Take Exit 15 (Rt. 21 South - McCarter Highway). Follow Rt. 21 South to Raymond Blvd. Turn right on Raymond Blvd. Follow Raymond Blvd. past Warren Street traffic light and Fleisher Athletic Center, Naimoli Center, and Lubetkin Field at Mal Simon Stadium will be to your right (one soccer goal line runs along Warren Street and the soccer sideline parallels Lock Street).

Garden State Parkway (North & South bound): Take exit 145 to Route 280 East, then follow Route 280 East directions.

Route 1 & 9 North & South: Take exit marked Newark, Rt. 21 North (McCarter Highway). Follow Rt. 21 North (McCarter Highway). Turn left on Raymond Blvd. Follow Raymond Blvd. past Warren Street traffic light and Fleisher Athletic Center, Naimoli Center, and Lubetkin Field at Mal Simon Stadium will be to your right (one soccer goal line runs along Warren Street and the soccer sideline parallels Lock Street).

Route 78 East: Take Route 78 East to Rt. 21 North. Turn left on Raymond Blvd. Follow Raymond Blvd. past Warren Street traffic light and Fleisher Athletic Center, Naimoli Center, and Lubetkin Field at Mal Simon Stadium will be to your right (one soccer goal line runs along Warren Street and the soccer sideline parallels Lock Street).



Route 22 East: Take Route 22 East to Route 21 North. Turn left on Raymond Blvd. Follow Raymond Blvd. past Warren Street traffic light and Fleisher Athletic Center, Naimoli Center, and Lubetkin Field at Mal Simon Stadium will be to your right (one soccer goal line runs along Warren Street and the soccer sideline parallels Lock Street).

Route 21 North: Follow Rt. 21 North to Raymond Blvd. Turn left onto Raymond Blvd. Follow Raymond Blvd. past Warren Street traffic light and Fleisher Athletic Center, Naimoli Center, and Lubetkin Field at Mal Simon Stadium will be to your right (one soccer goal line runs along Warren Street and the soccer sideline parallels Lock Street).

Route 21 South: Follow Rt. 21 South (McCarter Highway) to Raymond Blvd. Turn Right on Raymond Blvd. Follow Raymond Blvd. past Warren Street traffic light and Fleisher Athletic Center, Naimoli Center, and Lubetkin Field at Mal Simon Stadium will be to your right (one soccer goal line runs along Warren Street and the soccer sideline parallels Lock Street).

New York Thruway: Thruway to Exit 14A, Garden State Parkway. Follow Garden State Parkway directions above.

George Washington Bridge: NJ Turnpike South to Exit 15W. Follow Route 280 West directions above.

Lincoln Tunnel: West on Rt. 3 to Rt. 21 South. Turn right onto Raymond Blvd. Follow Raymond Blvd. past Warren Street traffic light and Fleisher Athletic Center, Naimoli Center, and Lubetkin Field at Mal Simon Stadium will be to your right (one soccer goal line runs along Warren Street and the soccer sideline parallels Lock Street).

From Brooklyn, Queens and Long Island: Take Verrazano-Narrows Bridge (Interstate 278) and follow 278 across Staten Island. Cross Goethels Bridge. Follow

signs to New Jersey Turnpike North then follow New Jersey Turnpike directions above.

PARKING

Bus/Van Parking: Visiting buses and vans may usually park on Lock Street adjacent to the athletic center. Please be careful not to block the parking space reserved for the doctor.

Visitor Parking: Visitor parking may be reserved in advance through your host. Otherwise, visitor parking at NJIT is available in the NJIT parking deck. Turn right onto Warren Street. Turn right onto Colden Street and proceed around the block to Summit Street. Parking Deck entrance is located to your right before the intersection with Warren Street.

Parking for on-campus athletic contests: NJIT is offering free off-street parking for fans attending regular season home soccer and volleyball matches and basketball games. The parking entrance, marked by a yellow sign is located on New Street.

OTHER TRANSPORTATION SYSTEMS

Newark Liberty International Airport: Minutes from the NJIT campus. A minibus (Newark Airlink) or taxi service connects the airport with Penn Station in Newark. Bus, Newark Light Rail, and taxi connections are available at the station.

Newark Penn Station: Located in downtown Newark, connections to the NJIT campus may be made by bus, Newark Light Rail, or taxi.

Morris & Essex Broad Street Station: A five-block walk to the NJIT campus via MLK Boulevard to Central Avenue. Taxi service is also available.

Newark Light Rail: From Penn Station in Newark, take the Warren Street stop for the NJIT campus. The Warren Street stop is on the sidewalk behind the press box for Lubetkin Field at J. Macolm Simon Stadium.

HOTELS DOWNTOWN

Hilton Newark Gateway

Gateway Center, Raymond Boulevard & McCarter Highway
Newark, NJ, 973/622-5000

Robert Treat Hotel

50 Park Place, Newark, NJ, 973/622-1900

Hampton Inn & Suites Newark Riverwalk

100 Passaic Ave, Harrison, NJ, 973/483-1900

NEAR NEWARK LIBERTY INTERNATIONAL AIRPORT

Best Western Newark Airport West

101 International Way, Newark, NJ, 973/621-6200

Hilton Newark Airport

1170 Spring Street, Elizabeth, NJ, 908/351-3900

Holiday Inn Newark Liberty International Airport

160 Frontage Road, Newark, NJ, 973/589-1000



2013-14 Highlanders Women's Soccer

Back Row (l-r): Alex Adam, Rebecca Tustin, Jamee Simone, Kylie Jones, Danielle Pierce, Jenny Cislo, Ashley Lofgren, Emmy Hattle, Carly Berdan

Middle Row (l-r): Assistant Coach Katrina Smedley, Volunteer Coach Tim Verschuren, Courtney McHugh, Jaclyn Ward, Camille Billing, Karen David, Samantha Bersett, Larissa Beer, Catherine Andrus, Grace Seeley, Megan Dellavalle, Assistant Coach Erwin van Bennekom, Head Coach Mandi Ridsen

Front Row (l-r): Abi Fakolujo, Antoinetta Jackson, Amanda Redden, Madeline Griep, Erin Schmitt, Kaelyn Gamel, Dana Schules, Julia Keebaugh, Brittany Goulart.



2013 HIGHLANDERS WOMEN'S SOCCER

AUGUST

23	Fri.	TEMPLE	7pm
25	Sun.	RHODE ISLAND	1pm
29	Thu.	at Saint Peter's	4pm

SEPTEMBER

1	Sun.	at Stony Brook	2pm
5	Thu.	at Monmouth	7pm
8	Sun.	LAFAYETTE	1pm
13	Fri.	VMI	3pm
15	Sun.	RIDER	4pm
20	Fri.	at Wagner	7pm
22	Sun.	at Cornell	1pm
27	Fri.	at Duquesne	5pm

OCTOBER

4	Fri.	at Delaware State	7pm
7	Mon.	at Columbia	7pm
13	Sun.	SOUTH CAROLINA STATE	5pm
19	Sat.	at South Carolina State	1pm
22	Tue.	PENN	7pm
27	Sun.	at Howard	1pm

NOVEMBER

1	Fri.	HOWARD	7pm
6	Wed.	DELAWARE STATE (Senior Day)	7pm