



NEW JERSEY INSTITUTE OF TECHNOLOGY

FENCING



2015-16 Media Guide

njithighlanders.com



FENCING

FENCING

Head Coach: Yefim Litvan

Phone/Email: 973-596-8490/litvan@njit.edu

Record at NJIT:

Men 60-106 (8); Women 24-79-1 (7)

13 NCAA berths in 13 seasons at Rutgers

Assistant Coaches: Jason Henderson, Danielle Henderson, Ben Igoe

First Year Men's Program: 1935-36

2014-15 Men's Record: 18-9, 14th place team finish at the 2015 NCAA Championships

First Year Women's Program: 1982-83

2014-15 Women's Record: 5-19

Postseason: Julia Garcia 2nd place finish at NCAA Fencing Championships

QUICK FACTS

Location: University Heights, Newark, NJ

Founded: 1881

Enrollment: 10,130 (total); 7,286 (undergraduate)

NJIT website: www.njit.edu

Nickname/Colors: Highlanders/
Red and White (Blue accent)

Home Arena: Fleisher Athletic Center
Multipurpose Room

Affiliations: NCAA Division I

Conference: Middle Atlantic Collegiate Fencing Association (Men); National Intercollegiate Women's Fencing Association (Women)

University President: Dr. Joel Bloom, EdD

Director of Athletics: Lenny Kaplan

Athletic Department Phone: 973-596-3636

WHY HIGHLANDERS?

The home of NJIT, University Heights, was formerly known as the Newark Highlands and NJIT's mailing address used to be High Street, until the thoroughfare was renamed in memory of Dr. Martin Luther King, Jr.

In 2006-07, NJIT athletics, in keeping with its move to NCAA Division I, unveiled a new graphic identity, which included a new Highlanders logo. Developed by CN Foundry for NJIT, the logo depicts the traditional Highlander, whose ferocity and bravery against all odds are the stuff of legend.

MEDIA RELATIONS

NJIT Athletics website:

www.njithighlanders.com

Facebook, Twitter, Instagram & YouTube:

@NJITHighlanders

Assistant AD for Sports Information:

Tim Camp, 973-596-8461/

timothy.camp@njit.edu

Assistant SID: Stephanie Pillari, 973-596-8324/pillari@njit.edu

Assistant SID: Courtney Caden, 973-596-8485/ caden@njit.edu

MEDIA INFORMATION

This guide is designed to assist in coverage of NJIT men's and women's fencing. For home matches, the NJIT sports information office will provide an official box score following each game. Coach Yefim Litvan and requested players will be available for interviews on the court following a 10-minute cooling off period. Radio broadcast requests should be made at least 10 business days prior to the contest. Requests for coach and player interviews on nongame days should be made through the NJIT sports information office (973-596-8461).

CREDITS

The 2015-16 NJIT Fencing Media Guide is a production of the NJIT Sports Information Office in cooperation with the Office of Strategic Communications. Written and edited by Tim Camp and Stephanie Pillari. Cover and interior design by Karyn Olsen. NJIT photographs and information courtesy of Office of Strategic Communications. All interior team and action photography by Larry Levanti. Red Bull Arena photo (p. 25) courtesy of Getty Images/RBNY.

TABLE OF CONTENTS

About NJIT	2-7
University Administration	8-11
Athletics Senior Staff	11
Sports Medicine	12-14
Strength & Conditioning	15-16
Academic Enrichment	16-17
Athletic Administration & Coaching Staff ..	18
NJIT in Division I	19-21
Athletics Facilities	22-25
Head Coach Yefim Litvan	26
Assistant Coaches	27
Rosters	28
Julia Garcia—2nd at NAAs	29
Program History	30-31
Men's Year-by-Year	32-37
Men's All-Time Roster	39-40
Women's Year-by-Year	41-42
Women's All-Time Roster	42
Hall of Fame	43
Directions to NJIT	44

NJIT is New Jersey's Science & Technology University. With roots going back to 1881, when it was founded as Newark Technical School, New Jersey Institute of Technology observed its 125th anniversary in 2006.

Located in University Heights, Newark, NJ, home to more than 30,000 college students, NJIT's campus is just 10 miles from New York City.

Playing a critical role in shaping New Jersey's future, NJIT, as a major public technological university, is an important pipeline for the flow of technology into society. The university's educational programs prepare students to be leaders in the technology-dependent economy of the 21st century. University researchers seek new knowledge to improve processes and products for industry. Through public and private partnerships and economic development efforts, the university helps to grow new business ventures that fuel the economy.

In recent years, NJIT has put tens of millions of dollars toward new and improved buildings and facilities on the 48-acre campus, including biomedical engineering labs and a campus center.



INSTRUCTIONAL PROGRAMS

NJIT offers an ever-expanding array of educational programs, with many new programs added in the last five years and more to come. In 2014 NJIT lists 125 undergraduate and graduate degree programs through six schools:

- Newark College of Engineering
- College of Architecture and Design
- College of Science and Liberal Arts
- School of Management
- Albert Dorman Honors College
- College of Computing Sciences



NJIT has 277 tenured or tenure track faculty; 99 percent of whom hold doctoral degrees or the highest degree attainable in their field. The student-faculty ratio is 16:1, with over 7,000 undergraduate students and nearly 3,000 graduate students. Our students hail from 33 states and more than 100 countries to rank eighth in the nation for diversity.

Albert Dorman Honors College enrolls more than 500 students who take advantage of honors courses, research opportunities, advising and mentoring. Honors College students have SAT scores ranking in the top 10 percent nationally.

With nearly 50,000 alumni, NJIT is an acclaimed institution.

- BuzzFeed.com ranked NJIT as the #1 higher education value nationally when considering annual tuition cost and average starting salary of graduates.
- Top one percent for return on investment and eighth in alumni earning potential among public universities nationwide – PayScale.com
- Top 10 percent nationally for return on investment and one of four best buys in New Jersey higher education –Bloomberg Businessweek
- Third in nation among America's Most Underrated Colleges – BusinessInsider.com
- Top National University – U.S. News and World Report
- 149th among national universities overall for its range of undergraduate majors and master's and doctoral degree programs and commitment to groundbreaking research - U.S. News and World Report
- An "America's Top College" – Forbes.com
- A Princeton Review Best College
- Top 200 American research universities –The Center for Measuring University Performance at Arizona State
- Top 50 among colleges without a medical school for research expenditures and top 10 among universities whose main research is in engineering – National Science Foundation
- Top 10 among technological universities in faculty scholarly productivity – Academic Analytics
- Top 100 producers of minority degrees, including fifth in the nation for bachelor's degrees in engineering technologies to all minority students – Diverse: Issues in Higher Education

RESEARCH

NJIT's research expenditures totaled more than \$110 million in FY2014 and faculty members welcome student collaboration on research projects.

As of September 1, 2014, NJIT had 185 issued U.S. Patents and 133 pending U.S. patent applications.

ECONOMIC DEVELOPMENT

NJIT is committed to economic development for Newark and the region. The university operates several outreach centers that provide direct technical assistance to the state's businesses with the goal of helping small and medium-sized companies. NJIT is also the home of New Jersey's oldest and largest incubator facility, and was one of the first institutions in the nation to adopt economic development as a fourth mission element, together with instruction, research and community service.

The Enterprise Development Center (EDC) at NJIT is New Jersey's largest high technology and life science business incubator, and one of the largest in the nation. EDC resident companies have attracted more than \$80 million in third-party funding since entering the incubator, and generated revenues of \$50 million last year. The approximately 90 member companies employ roughly 500 people.

THE CAREER EDGE

- NJIT was named in the top 1 percent for return on investment and 8th in alumni earning potential among public universities nationwide by *Payscale.com*.
- Students get a head start on their careers through cooperative education, salaried internships that relate specifically to their field of study.
- The 10 fastest-growing occupations for college graduates include NJIT's newest program areas—physician assistant and physical therapy—as well as computer-related occupations.
- Among the CEOs of the S&P 500 companies, engineering is the single most common undergraduate degree (22 percent of the group). More than half of the CEOs have undergraduate degrees in engineering, business management, science, math, or computing.

THE GLOBAL EDGE

The diversity in NJIT's student body and faculty prepares graduates to understand and succeed in the global marketplace.

THE TECHNOLOGY EDGE

NJIT has been designated one of the nation's most technologically sophisticated universities by *Forbes.com* and a *Princeton Review* survey and the university has received major funding from the National Science Foundation and the National Security Agency in recent years.

THE ACADEMIC EDGE

- NJIT named a Most Wired College by *Princeton Review*.
- NJIT was the first recipient of the Excellence in Technology Education Award presented by New Jersey Technology Council (NJTC), which annually recognizes outstanding technology companies and individuals who contribute to “growth, achievement, and excellence in diverse technology sectors of New Jersey.”
- *Forbes.com* and a *Princeton Review* survey designated NJIT as one of the nation’s most technologically sophisticated universities based on factors such as the ratio of computers to students, campus-wide and wireless networks, and technology-enhanced learning.
- NJIT has received major National Science Foundation (NSF) funding to define the next generation of computing applications. Most notable is the creation of *SmartCampus*, a wireless peer-to-peer, location-aware community system that immerses students in a world of wearable computers.
- NJIT has been designated a Center of Academic Excellence in Information Assurance (Homeland Security) Education by the **National Security Agency**.
- NJIT partners with Iowa State University in the Center for Information Protection (Homeland Security), an NSF-supported cooperative research center in information assurance.





THE REGIONAL EDGE

New Jersey, with America's highest concentration of pharmaceutical, hi-tech, biotech, and medical device companies is the place to study technology. It has the nation's highest per capita number of engineers and scientists as residents, while also leading in per capita rate of patents issued. Further, the Newark-New York region is a living laboratory for architecture and building sciences, environmental engineering and transportation. .

THE RESEARCH EDGE

NJIT has been designated by the State of New Jersey as the Homeland Security Technology Systems Center and NJIT operates the world-renowned Big Bear Solar Observatory.

A HISTORY OF NJIT

From the Industrial Revolution to the Information Age, New Jersey Institute of Technology has a rich history with its beginnings developing from the industrial age.

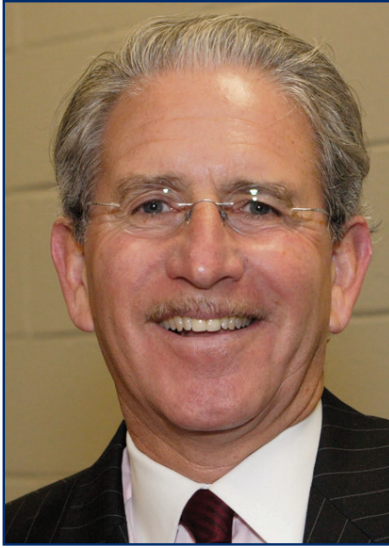
In 1881, an act of the New Jersey State Legislature, recognizing an urgent need, sought a home for what would be the state's technical school. The efforts of Newark's public and private sectors resulted with the opening of Newark Technical School, addressing the state's need.

Over time, the university expanded its curriculum and mission. In 1919, the university established baccalaureate programs in three engineering fields. By the middle of the 20th century, Newark Technical School was transformed into the robust Newark College of Engineering.

The post-war period was one of enormous activity with regular expansion of the campus, as well as the introduction of doctoral level programs. In 1975, with the addition of the New Jersey School of Architecture, the institution had evolved into a technological university, emphasizing a broad range of degrees and dedication to significant research and public service. Newark College of Engineering, stronger than ever, remained intact, but a new university name -- New Jersey Institute of Technology -- reflected the institution's expanded mission.

A broadened mission called for the creation of a residential campus and the opening of NJIT's first dormitory in 1980 began a period of steady growth that continues. Two new schools were established during the 1980s--the College of Science and Liberal Arts (1982) and the School of Industrial Management (1988). The Albert Dorman Honors College was established in 1994, and the College of Computing Sciences, was created in 2001. Beginning in 2009 the College of Architecture and Design was created to house the New Jersey School of Architecture and the new school of Art and Design.





DR. JOEL BLOOM

President, New Jersey Institute of Technology

Appointed President of New Jersey Institute of Technology on January 12, 2012 by unanimous vote of NJIT's Board of Trustees, Joel S. Bloom started his career in industry working as an economist.

He subsequently became an educator and administrator for the New York City public schools. Prior to coming to New Jersey, he worked as a research director and instructor at Teachers College, Columbia University.

In New Jersey, he managed state and federally-funded curriculum development and training centers for the state. From 1983 through 1990, Dr. Bloom served as assistant commissioner in the NJ Department of Education for the Division of General Academic Education. He was responsible for managing many of the education department's initiatives including competency testing, curriculum content standards, pre-school

programs, establishment of 17 model effective schools, over 300 grants and contracts, and a \$24 million budget.

Immediately prior to his appointment as President, he served as Interim President from September 2011 until January 2012. Prior to that, he was NJIT's Vice President for Academic and Student Services, as well as founding dean of the Albert Dorman Honors College.

Indeed, since joining NJIT in July 1990, Dr. Bloom has served the university in many capacities.

Promoted in 1996 to Vice President for Academic and Student Services, he was responsible for nine divisions of the university, including pre-college programs, enrollment management, continuing professional education, career development services, dean of student services, freshman studies, educational opportunity programs, library services, physical education and athletics.

Dr. Bloom was appointed as the first dean of the Albert Dorman Honors College in 1998, in addition to his vice president responsibilities. The Honors College enrolls over 650 students who come from 15 states

and several foreign countries. The average SAT score is over 1340 and the majority of the incoming freshman class members graduated in the top 15 percent of their high school class. More than 50 percent of the Honors College students maintain a grade-point average higher than 3.5.

Dr. Bloom is chair of the Science Park Board, treasurer of the NJ President's Council, and treasurer of the NJEDGE.Net Board. In addition, he serves as a member of the following boards: the Board for Communities and Schools, Newark Alliance, Philadelphia Alliance for Minority Participation, La Casa de Don Pedro, and the Association of Public and Land-grant Universities Presidents Council. Dr. Bloom has been the recipient of national and state education awards, as well as federal, foundation and corporate grant awards. He has published journal articles and presented papers on school improvement, curriculum development, college transition and student assessment.

Dr. Bloom holds a master's degree and a doctorate from Teachers College, Columbia University. He also earned master's and bachelor's degrees from Hunter College of the City University, New York City.



CHARLES J. FEY

Vice President for Academic and Student Services

Dr. Fey joined NJIT in September 2012 with 39 years of leadership experience in student services as Vice President of Academic Support and Student Affairs.

At NJIT, he continues his commitment to creating a campus climate that promotes student achievement and student success. His personal philosophy of student engagement extends to the development of innovative programs that inspire challenging and engaging student experiences and encourage each student to reach for his/her dream and work until it is achieved.

Dr. Fey's strong record of accomplishments demonstrates his deep understanding of emerging issues and trends that affect metropolitan campuses and the students who attend them. In addition to his direct involvement with students, Fey

oversees numerous offices and departments at NJIT, including including Intercollegiate Athletics, Recreation and Intramurals, Physical Education.

Fey actively participates in student affairs business on a national level and holds or has held board positions in ACPA, NASPA, and APLU. He was the founding president of the Massachusetts College Personnel Association and was president of the Texas Association of College and University Personnel Association. Fey has received numerous awards including the Esther Lloyd Jones Professional Service Award from ACPA; is a Diamond Honoree of ACPA's Foundation; twice received the Outstanding Service award from the Commission on Administrative Leadership of ACPA; and an exemplary service award from MCPA.

Fey earned his bachelor's degree in liberal arts and his masters of education degree in counselor education, college student personnel services, both from The Pennsylvania State University. He holds a doctorate in higher education administration from Texas A&M University.

Prior to NJIT, he was the Vice President for Student Affairs at The University of Akron; was Vice President for Student Affairs at University of Maryland, Baltimore County (UMBC); Dean of Students at the University of Texas at El Paso; served as Vice President and Dean of Student Life at Our Lady of the Lake University in San Antonio; Dean of Students at St. Mary's University, also in San Antonio; Associate Dean of Student Affairs at Keene (NH) State College; Director of Housing/Resident Life at Catholic University of America; and in numerous student affairs and other administrative posts at Newbury Junior College in Boston.

Married to Melba Ann Fey since 1985, Charlie and Melba have two daughters, Kelly Prestel, living in Boston, and Chelsea Fey, living in Arlington, VA and two sons, Lloyd Lopez and Matt Lopez, who live in San Antonio.



LENNY KAPLAN

Assistant Vice President/Director of Athletics

Since taking over as head of New Jersey Institute of Technology's division of physical education and athletics in August 2000, Lenny Kaplan has been instrumental in guiding the program's growth, first at the NCAA Division II level and, since late 2002, the successful reclassification to NCAA Division I.

The 2014-15 academic year saw momentous accomplishments and change for Highlander athletics.

In competition, two NJIT teams, men's soccer and men's basketball, scored victories over nationally-ranked opponents. Men's soccer defeated #22 Navy in late September 2014 and men's basketball became a national story when it upset #17/#16 Michigan in Ann Arbor on December 6. Later, the men's basketball team won its first three games in the national CollegeInsider.com postseason tournament, advancing to the semifinals.

Off the court, NJIT announced plans to build a new Wellness and Events Center, a \$100 million on-campus facility with an opening targeted for 2017. And finally, the Highlanders, who had been the only Division I

Independent in the nation, accepted an opportunity to become the eighth full member of the multisport Atlantic Sun Conference, effective July 1, 2015.

Along the way, Kaplan was promoted in 2014-15 to his new title of Assistant Vice President/Director of Athletics.

He has been a member of the Division I-AAA Athletics Directors Association (DI-AAA ADA) Executive Committee since 2012-13. The Division I-AAA Athletics Directors Association's mission is to enhance initiatives common to its Division I-AAA membership (the Division I institutions that do not sponsor football).

In September 2015, Lenny Kaplan was lauded at the annual Eastern College Athletic Conference (ECAC) Honors Luncheon. In a program that recognized student-athletes, administrators, institutions and officials, he was one of two named Division I Male Administrator of the Year.

Going back more than a decade to his arrival at NJIT, Kaplan helped stabilize and expand a program that was entering its fourth year in Division II. In late 2002, after discussions with then-university President Dr. Robert A. Altenkirch and Vice President (now President) Dr. Joel Bloom, Kaplan took on the task of steering NJIT's programs into Division I, an arduous process that reached fruition with the NCAA's granting active Division I status, with full championship eligibility effective September 1, 2009.

Throughout Kaplan's tenure, NJIT has enhanced the athletics program, particularly in areas that benefit the

student-athletes directly. A hallmark in achieving that aim was the Highlanders Athletics Campaign, which announced in the summer of 2009 that it had raised \$5.4 million, exceeding its original goal. In the \$5 million goal, \$3 million was for facilities, \$1.5 million for athletic scholarships, and \$500,000 for program support.

The sports offerings have expanded to the current 19 varsity programs. And since 2004, NJIT has renovated its two main on-campus venues—Lubetkin Field at Mal Simon Stadium at Lubetkin Field and the Estelle and Zoom Fleisher Athletic Center. Further, the Naimoli Family Recreation Center, a 25,600-square foot facility opened early in 2011 enhanced the recreational and intercollegiate opportunities on campus. The Naimoli Center is the home of both NJIT tennis teams.

The school also signed a 10-year partnership to play all home baseball in the professional Bears and Eagles Riverfront Stadium and later agreed to host select basketball home games in the Prudential Center, downtown Newark home of the NHL's New Jersey Devils. The NJIT club hockey team also plays all of its home contests in the AmeriHealth Pavilion, part of the Prudential Center that serves as the Devils practice rink.

Under Kaplan's leadership, many teams achieved regional and national Division II ranking. Success for several women's teams was unprecedented, with basketball, tennis and soccer all reaching postseason play for the first time in their existence under his administration.

Additionally, men's volleyball captured a divisional championship in the Eastern Intercollegiate Volleyball Association and the next year reached the EIVA playoff semifinals hosted by eventual 2008 national champion Penn State.

In 2009-10, NJIT's first year as a full active member of Division I, the women's volleyball team and senior Sabrina Baby became the school's first Division I national statistical champions, as team and individual leaders, respectively, digs per set. Baby was honored as the school's first CoSIDA Academic All-America in the Division I era, earning third-team national honors.

Christian Baumbach made history in 2009 as NJIT's first individual DI conference champion, when he won the Great West Conference men's cross country race. He also won the prestigious IC4A University Division race in the 101st annual running of that contest.

In 2010-11, the Highlanders earned their first-ever Division I conference team championship when women's tennis captured the Great West title, a feat they repeated the following year. In 2012-13, both basketball teams won Great West Conference crowns. Individually, men's basketball players Isaiah Wilkerson (2011-12), Chris Flores (2012-13), and Damon Lynn (2014-15) have all been Associated Press All-America honorable mention recipients,

Marko Drljic became the first NJIT men's soccer player to be selected to the All-Region season honors from the NSCAA at

the highest level, earning the honor in both 2013 and 2014. Cristian Marcel won similar honors in 2014. The duo were Sun Belt Conference Offensive Player of the Year (Marcel) and Defensive Player of Year (Drljic) in 2014, as well.

Men's tennis player Markus Schultz has achieved regional ranking in both 2013-14 and 2014-15.

John Porteous became the first NJIT track and field athlete to qualify to the 2014 NCAA Track and Field Regional, earning a spot in the men's 400-meter hurdles.

Julia Garcia, a freshman, was second in the epee at the 2015 NCAA Championships, becoming the school's first women's fencing All-America.

NJIT's growing success in Division I competition has been gone along with a continued commitment to excellence in the university's rigorous academic environment. The combined grade point average of Highlander student-athletes has been above 3.0 for 12 straight semesters through Spring 2015.

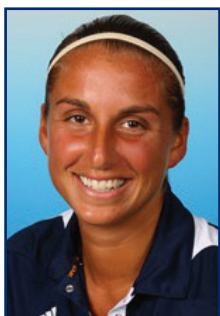
Before coming to NJIT, Lenny Kaplan served 11 years at Manhattan College, where he began as Manhattan's director of operations and was assistant athletics director from 1991-2000.

Kaplan, a 1988 graduate of St. John's University with a degree in athletics administration, resides in Merrick, NY, with his wife, Nancy. They are the parents of two sons, Michael, a student at Lafayette College, and Joshua, who is in high school.

Athletics Senior Staff



Andrew Schwartz
Senior Associate Athletic Director
(973) 642-7224 aschwartz@njit.edu



Stephanie Pillari
Acting Senior Women's Administrator/
Assistant Sports Information Director
973-596-8324 pillari@njit.edu



Tim Camp
Asst. Director of Athletics/
Sports Information
(973) 596-8461 timothy.camp@njit.edu



Jayson Smikle
Assistant Athletic Director
for Compliance
(973) 596-5278 jsmikle@njit.edu



Tim Paul
Assistant Director of
Development for Athletics
(973) 596-8489 tpaul@njit.edu

SPORTS MEDICINE

NJIT sports medicine is moving forward with the growth of the Highlanders program. Head trainer Matt Koscs, MS/ATC, oversees the program, ably assisted by assistant trainers Paul Grayner, MEd/ATC; Melissa Maskery, MS, ATC; Brittany Vondran, MS/ATC; and, Kyle Tuohy, BS/ATC.



Matt Koscs, ATC, Head Athletic Trainer

Matt Koscs, who earned both his bachelor's and master's degrees from University of Delaware, has

served NJIT as head trainer since July 2009, a year after he joined the staff as an assistant trainer.

As an undergraduate at Delaware, he was recipient of the Paris Delligatti Memorial Award for Excellence in Athletic Training. He

earned his MS in Exercise Science from Delaware in 2008.

Prior to his arrival at NJIT, Matt served three years as the head athletic trainer at Hodgson Vocational Technical High School in Newark, DE, from 2005 to 2008.

In addition to his work at the high school level, he was head athletic trainer for the Delaware Dynasty semi-pro soccer team in Wilmington, as well as with the Kirkwood Soccer Club in New Castle in 2005 and 2006.

He was employed from 2005 to 2008 at Christiana Care Physical Therapy Plus, in Newark, DE, where he was an athletic trainer and was the Director of Athletic Training Services in a clinical setting.

He is a NATABOC certified athletic trainer, as well as holding additional certifications as a professional rescuer and in first aid.

He resides in Metuchen, NJ with his wife Kristin and daughters Eloise, Claire and Madeleine.



Paul Grayner, ATC, Assistant Athletic Trainer

Paul Grayner, who joined the NJIT staff as an assistant athletic trainer late in the 2008 calendar year, has a diverse

background in athletic training, having served at the college and professional levels, as well as in a fitness center setting.

A graduate of Saint Leo College in Florida and holder of a master's

degree from American University in Washington, DC, Grayner has served as both a head and assistant trainer in the past.

From the mid-1970s to the mid-1980s, he was a trainer in the minor league systems of the New York Yankees and New York Mets from 1977 to 1985 and in 1984 he was assistant trainer with the Mets. He later worked with the Long Island Knights professional basketball team.

At the collegiate level, he was head trainer at Division I Fairleigh Dickinson University in Teaneck, NJ from 1989 to 1998 and he earlier worked as an assistant trainer at Hofstra (1982-85) and Adelphi (1985) on Long Island before joining FDU as an assistant (1986-89).

In addition to his work in athletic training, Grayner is a financial services representative and a life insurance sales representative.

He resides in Dumont, NJ.



Melissa Mackey, ATC, Assistant Athletic Trainer

Melissa Mackey, who joined the NJIT staff as an assistant athletic trainer in the summer of 2013, earned her bachelor's

degree, majoring in athletic training and minoring in strength and conditioning, from the University of Delaware in 2011.

She earned her master's in athletic training at Temple University in May 2013.

As a graduate assistant, she worked in Philadelphia with several Division I teams at Drexel University and as an undergraduate, on the medical staff for Delaware's 2010 Division I Football Championship Series (formerly known as Division I-AA) national runner-up.

She has worked as a trainer at numerous summer camps and before coming to NJIT, she earned the 2013 Merit Award for Research in the College of Health Sciences & Social Work and was the recipient of Drexel University Dragon Award for Leadership.

She is married to Mark Mackey.



Kyle Tuohy, ATC, Assistant Athletic Trainer

Kyle Tuohy, a 2014 summa cum laude graduate of East Stroudsburg (PA) University, joined the NJIT

athletic training staff in September 2014.

Tuohy, who will attend graduate school while working at NJIT, won

multiple awards from his alma mater, including the David Caryl Athletic Training Outstanding Student Award in May 2014.

He had varied clinical internship experience starting in the Fall Semester 2012 and continuing through his senior year.

His internships included stints with the East Stroudsburg women's basketball team; Parkland High School and Pen Argyl High School,

both in Pennsylvania; the Tennessee Smokies professional baseball team, Class AA minor league affiliate of the Chicago Cubs; and Lafayette College in Easton, PA, where he worked closely with the Leopards football team in season and also worked with athletes from all in-season sports in the Fall Semester.

He holds several profession-related certifications, including from the National Athletic Trainers Association.



Lauren Kravitz, ATC, Assistant Athletic Trainer

Lauren Kravitz, who joined the NJIT staff as an assistant athletic trainer in the fall of 2015, earned her bachelor's degree,

majoring in athletic training from William Paterson University in 2013.

She is pursuing her master's in exercise science with a concentration in exercise physiology at Kean University with an

anticipated graduation in December 2015.

As a graduate assistant at Kean University, she was the primary contact for NCAA Division III men's and women's basketball, field hockey and men's and women's lacrosse.

Prior to graduation at William Paterson, she worked as an athletic training student, providing treatment for NCAA Division III football, softball, men's basketball and men's and women's soccer.

She has worked as an Occupational Therapist Aide at Optimum Orthopedics in Montclair, NJ, as well as an Aide at Push to Walk, a non-profit organization in Riverdale, NJ, that provides individualized workouts and resources to people with spinal cord injuries and other neurological conditions.

Her volunteer experience includes: National Special Olympics, Special Olympics of New Jersey Summer Games and Special Olympics of New Jersey Fall Games.

Administration



Louis Rizio, MD, Team Physician

Dr. Rizio is a board certified orthopedic surgeon and is fellowship trained in the field of sports medicine. He is a graduate of Rutgers and after earning his medical degree from the UMDNJ/New Jersey Medical School (recently reorganized and renamed Rutgers Biomedical and

Health Sciences), Dr. Rizio completed his orthopaedic residency at Tufts University in Boston.

He then completed a sports medicine fellowship at the University of Miami. During his fellowship, he was assistant team physician of the Miami Dolphins, University of Miami Hurricanes, and the Florida Marlins.

Dr. Rizio, who specializes in sports-related injuries, practices at the Sports Medicine and Orthopaedic

Center in Livingston, NJ. Prior to starting his own practice, Dr Rizio was the Chief of Sports Medicine at the NJ Medical School from 2000-2005. He currently is a professional, college, and high school team physician.

In 2013, Dr. Rizio was honored by the magazine New Jersey Monthly on its "Jersey Choice Top Doctors" list.

STRENGTH AND CONDITIONING

There are many ways to make a team better and a vital path to improvement comes with the mantra "bigger, stronger, faster".

It's how teams get better from within by maximizing individual and team performance in competition. The Strength and Conditioning staff also works closely with the Athletic Training Staff in the areas of injury prevention and rehabilitation.

In the summer and fall of 2014, NJIT's Strength and Conditioning took new direction with the appointment of Bobby Fisk as Head Strength and Conditioning Coach and Drew Culp as Fisk's Assistant Coach.



Bobby Fisk, Head Strength & Conditioning Coach

Bobby Fisk, who was a basketball player in his own college days and coached the sport after college, comes to NJIT from Xavier University in Cincinnati, where he was assistant coach of strength and conditioning for the entire Musketeers' program, which

competes in the Big East Conference.

Fisk, a native of Schenectady, NY, spent over two years at Hobart and William Smith Colleges in Geneva, NY, where, as head strength and conditioning coach, he worked with successful teams, including women's soccer (William Smith College), which won the 2013 NCAA Division III National Championship; football (Hobart), which advanced to the 2012 Division III national quarterfinals and the regional finals in 2011 and

2013; and basketball, where Hobart reached the second round of the 2012 NCAA Tournament.

Moving to the Division I level with Xavier in 2013-14, Fisk worked with all 16 of the school's teams, with a primary assignment to women's basketball, men's and women's soccer, baseball, and men's and women's tennis.

He is a graduate of the State University of New York College at

Oneonta (BS, Business Economics, 2008), Averett University of Danville, VA (MBA, 2010), and California University of Pennsylvania (MS in Exercise Science, Performance Enhancement & Injury Prevention, 2013).

As a student-athlete, Fisk was a men's basketball player at NCAA Division I UMBC in Baltimore for three years before transferring to Oneonta, where he was on the team for two years, serving as captain as a senior and earning All-State

University of New York Athletic Conference honorable mention.

As a senior for Oneonta's Red Dragons, he finished 16th in the nation in Division III in 3-point shooting percentage (.441) and 22nd in 3-pointers made per game (3.2) as a senior at Oneonta.

After graduation from Oneonta, he entered coaching while pursuing his master's degree at Averett, serving that program as assistant men's basketball coach (two years) and head strength and conditioning

coach (one year).

Having received his master's degree from Averett in December 2010, he returned home to the Schenectady area and worked April 2011 to July 2011 as assistant strength and conditioning coach at nearby Siena College and with the minor professional basketball Albany Legends (head strength and conditioning coach).

Fisk holds multiple certifications and professional memberships.



Drew Culp, Assistant Strength & Conditioning

NJIT's head strength and conditioning coach Bobby Fisk named Drew Culp to be his assistant coach in

nearby Seton Hall prior to accepting his position with NJIT.

At Seton Hall, Culp worked with the school's Big East Conference men's and women's basketball teams, as well as with the men's soccer team.

Between college and coming to New Jersey, Culp worked at Velocity Sports Performance in Irvine, CA. He was a Sports Performance Coach and Assistant Sports Performance Director. Specifically, he was the Head Strength and Conditioning Coach for the El Toro High School football team and also assisted in

training National Football League combine athletes. He also offered private training to athletes in a range of sports and age levels.

Drew Culp was a graduate assistant strength and conditioning coach at Penn State, working with the Nittany Lions football team for over a year through preseason 2012 and working with 11 Olympic Sports teams in his final semester.

He holds multiple certifications, including both strength and conditioning and first aid and CPR.

September 2014.

Culp, who earned his bachelor's degree from Penn State University in 2010 and his master's degree from Penn State in 2012, most recently served as a volunteer assistant strength and conditioning coach at



ACADEMIC ENRICHMENT

Sandra Taylor, Director of The Learning Center

Sandra Taylor was appointed as Director of The Learning Center in late September

2014 after serving as Interim Director for the previous 16 months.

She joined NJIT in January 2010 as Academic Advisor for Student-Athletes working in NJIT's Center for Academic and Personal Enrichment (CAPE), which has since been renamed as The Learning Center.

She mentored student-athletes in the areas of academic support, personal development, leadership, and community service. She was instrumental in bringing the Chi Alpha Sigma Honor Society for student-athletes to campus and has been individually certified from the N4A (National Association of Academic Advisors for Athletics) as an academic advisor for student-athletes.

In May 2013, she was elevated to Interim Director of CAPE and presided over its transition to the Learning Center in August of 2014. The Learning Center provides academic support to all students, mentoring and workshops, tutoring in areas outside of math and writing,

and testing accommodations for students with disabilities. She has served on NJIT's Strategic Planning, Academic Advising, Retention and Persistence, Customer Service, Student Satisfaction, and Athletic Oversight Committees.

Prior to joining NJIT, Taylor spent 17 years as a key member of the Manhattan College Department of Athletics. She earned both her bachelor's degree in secondary education and her master's degree in special education from Manhattan College and is working on her doctorate in educational leadership at St. Mary's University in Winona, MN.

Working in the athletics department at Manhattan, a founding member of the Metro Atlantic Athletic Conference, Taylor was Associate Director of Athletics and Senior Woman Administrator, having filled those posts from 1996 until joining NJIT in 2010,

For much of her time on the Manhattan staff (1995 to 2003), she was Chief Athletic Department Compliance Officer, with responsibility for Manhattan's adherence to NCAA Division I, MAAC and college regulations. She began her service at Manhattan as

Athletic Department Ticket Manager, serving in that capacity from 1993 to 2003.

In her time at Manhattan, she served on numerous NCAA, conference and internal college committees, including service on the NCAA Division I Management Council from 2004 to 2007 and as chair of the NCAA Women's Lacrosse Committee from 2002 to 2006.

At the conference level, she chaired the MAAC Women's Basketball Committee from 1997 to 2009 and also served on four other sport committees, as well as on the MAAC Committee on Athletic Administration, with service as vice-chair in 2008-09.

Internally at Manhattan, her assignments included service on the Middle States Review in 2000 and on the NCAA Certification Committee.

Sandra and her husband, Ken, who is Associate Athletics Director/Development and Marketing at Monmouth University after many years as Associate Commissioner at the MAAC, reside in Monroe Township, NJ, with their daughters, Katherine, who was born in May 2004, and Samantha, who was born in July 2009.



Mike Spisto, Eligibility Certification Officer/Academic Adviser for Athletics

Mike Spisto moved to administration as NJIT's Eligibility Certification Office/Academic

Adviser for Athletics in the Spring of 2013, working in the Center for Academic and Personal Enrichment (CAPE), now named The Learning Center.

For the previous five years, he was the top assistant coach on the men's basketball staff, working with head coach Jim Engles in an association that culminated with the Highlanders capturing the 2013 regular season championship of the Great West Conference.

In addition to 14 years college coaching—five at NJIT—he served as Director of Athletics at the State University of New York at Delhi in the

two years before he joined Engles' coaching staff with the Highlanders.

He had two stints as head coach at SUNY at Delhi sandwiched around three years as a Division I assistant with Rider and Albany (NY). He began his coaching career with two years an assistant at his alma mater, Division III SUNY Oneonta.

At Delhi, which is also an alma mater, he was head coach from 1999 to 2001, left to become a Division I assistant and then returned for another two-year stint as head coach from 2004 to 2006 before becoming AD at Delhi.

His head coaching record in four years at SUNY Delhi was 86-31 and both stints included championships and coaching awards. His first Division I coaching assignment came at Rider University in 2001-02, where he worked alongside Jim Engles as an assistant when Rider captured its first-ever Metro Atlantic

Athletic Conference regular season championship.

Heading to the University at Albany (NY), he helped recruit the team that would win back-to-back America East Conference championships.

Spisto's coaching career began at Oneonta State following his 1997 graduation. In addition to his bachelor's degree from Oneonta, he earned an associate's degree from SUNY Delhi, as well as an MSS from United States Sports Academy.

He played at both Delhi and Oneonta and was all-region twice at Delhi, where he is the career assists leader. At Oneonta he was captain as a senior after winning an ECAC title his junior year.

Mike and his wife, Katie-Lynn, reside in Staten Island, NY, with their young children: sons Michael (10) and Christopher (7), and daughter Alyssa (3).



Brittany Vorndran, Academic Advisor for Student-Athletes

Brittany Vorndran, who joined the NJIT staff as an assistant athletic trainer in the summer of 2012, earned

her bachelor's degree, majoring in athletic training, from Bridgewater (MA) State University in 2010 and was the school's 2008-09 Athletic Training Student of the Year.

She earned her master's in Kinesiology at James Madison University in Harrisonburg, VA, in May 2012.

At James Madison, she worked with the cross country, track and field, tennis and cheerleading teams.

A resident of Millville, NJ, she has worked as a substitute teacher for the Millville Board of Education.

Administration

SENIOR ADMINISTRATION

Lenny Kaplan	Assistant Vice President/Director of Athletics
Andrew Schwartz	Senior Associate Athletic Director
Stephanie Pillari	Acting Senior Woman Administrator
Jayson Smikle	Assistant Athletic Director for Compliance
Tim Camp	Asst. Athletic Director for Sports Information
Brian Callahan	Assistant Director of Physical Education
Michael Siegel, PhD	Faculty Athletic Representative
Kerry Feder	Administrative Assistant for the Director of Athletics

ACADEMIC SUPPORT

Sandra Taylor	Director of The Learning Center;
Mike Spisto	Eligibility Certification Officer/ Academic Advisor Athletics

ATHLETIC TRAINING

Matt Koscs	Head Athletic Trainer
Paul Grayner	Assistant Athletic Trainer
Melissa Mackey	Assistant Athletic Trainer
Kyle Tuohy	Assistant Athletic Trainer
Lauren Kravitz	Assistant Athletic Trainer
Dr. Louis Rizio	Team Physician

COMPLIANCE

Jayson Smikle	Assistant Athletic Director for Compliance
Raquel Green	Compliance Coordinator

DEVELOPMENT

Tim Paul	Assistant Director of Development for Athletics
----------	--

FLEISHER ATHLETIC CENTER/ WARREN STREET FITNESS CENTER

Casey MacDonald	Interim Operations Manager
Joe Vacca	Athletics Business Coordinator/ Ticket Manager
Jonathan Walker	Warren Street Fitness Center Front Desk

SPORTS INFORMATION

Tim Camp	Assistant Athletic Director for Sports Information
Stephanie Pillari	Assistant Sports Information Director
Courtney Caden	Assistant Sports Information Director

STRENGTH AND CONDITIONING

Bobby Fisk	Head Strength and Conditioning Coach
Drew Culp	Assistant Strength and Conditioning Coach

COACHING STAFF DIRECTORY

BASEBALL

Brian Guiliana	Head Coach
Robbie McClellan	Assistant Coach
Grant Neary	Assistant Coach
Craig Anderson	Volunteer Assistant Coach

MEN'S BASKETBALL

Jim Engles	Head Coach
Brian Kennedy	Assistant Coach
Jesse Agel	Assistant Coach
Kim Waiters	Assistant Coach
Andrew McGlynn	Director of Basketball Operations

WOMEN'S BASKETBALL

Steve Lanpher	Head Coach
DeAnn Kraft	Assistant Coach
La Kea Jones	Assistant Coach
Epiphany Smith	Assistant Coach

MEN'S & WOMEN'S CROSS COUNTRY

Al Alonso	Head Coach
John Crawford	Assistant Coach

MEN'S AND WOMEN'S FENCING

Yefim Litvan	Head Coach
Jason Henderson	Assistant Coach
Danielle Henderson	Assistant Coach
Ben Igoe	Assistant Coach

MEN'S LACROSSE

Travis Johnson	Head Coach
Brad Conlon	Assistant Coach
Fran Gormley	Assistant Coach
Brian Tironi	Volunteer Assistant Coach

MEN'S SOCCER

Didier Orellana	Head Coach
David Janezic	Assistant Coach
Augi Freitas	Assistant Coach
Anthony Tuesta	Volunteer Assistant

WOMEN'S SOCCER

Mandi Risden	Head Coach
Scott Waddell	Assistant Coach
Chris Duggan	Assistant Coach
Tim Verschuren	Volunteer Coach

MEN'S SWIMMING & DIVING

Michael Lawson	Head Coach
Mark Albright	Assistant Coach
Shawn Bryan	Assistant Coach
Anthony Cacula	Volunteer Diving Coach

MEN'S AND WOMEN'S TENNIS

Ira Miller	Head Coach
Jacob Myer	Assistant Coach
Livia Gherman	Assistant Coach

MEN'S AND WOMEN'S TRACK AND FIELD (INDOOR & OUTDOOR)

Al Alonso	Head Coach
John Crawford	Assistant Coach
James Luginsland	Assistant Coach (Throws)

MEN'S VOLLEYBALL

Danny Goncalves	Head Coach
Brennon Dyer	Assistant Coach

WOMEN'S VOLLEYBALL

Pete Volkert	Head Coach
Ariel Scott	Assistant Coach
Anthony Valbrun	Assistant Coach
Marc Solondz	Volunteer Coach

Beginning on September 1, 2009, the entire NJIT athletics program officially gained across-the-board active membership in NCAA Division I, completing a process that began officially in 2003.

NJIT, its teams and student-athletes enjoy the full benefits of Division I membership, including eligibility for Division I postseason championship competition and the inclusion of the Highlanders among the national Division I leaders in statistics maintained by the NCAA.



David Kong, 2014 & 2015 NCAA National Championship Participant

Within months of NJIT's active Division I membership, the school won its first national Division I statistical championships, as women's volleyball player Sabrina Baby led the nation in digs per set and her teammates captured the

team crown for digs, as well.

The NCAA's decision to make NJIT a full member of Division I completed a specific timetable that required NJIT and its Department of Athletics to meet a series of annual benchmarks before proceeding to the next step in the process.

NJIT, which competed in NCAA Division II beginning in 1997-98 and in NCAA Division III for more than two decades before that, made its first formal move toward Division I reclassification with men's

soccer paving the way in 2003. That move grew out of November 2002 meetings among then-President Robert A. Altenkirch, then Vice President Joel Bloom (who would later succeed Altenkirch as NJIT's President) and Director of Athletics Lenny Kaplan. From there came a proposal for Dr. Altenkirch to the Board of Trustees, which unanimously approved in February 2003 a plan to reclassify men's soccer to Division I. Little more than two years later, the NCAA approved NJIT's proposal to begin advancing its entire program to Division I.

Men's soccer achieved active Division I status in 2005 and NJIT women's soccer became postseason-eligible in 2007. The remaining programs also began reclassifying in 2005, with active status taking longer for an entire athletics program than under the single-sport- per-gender track used for the two soccer programs.

In 2005-06 the lion's share of the competition for all but the men's soccer program came at the Division

II level. In 2006-07, 2007-08, and 2008-09, NJIT's teams competed at the Division I level and fully complied with NCAA Division I rules, but were not eligible for championships at the top level.

Every facet of the program has been enhanced in the move to Division I with a special emphasis placed on student-athlete welfare. Facility upgrades have gone along with support staff expansion. NJIT has built a model NCAA Division I rules compliance regimen within its athletics program and across the entire university.

Further, the Board of Trustees embraced the transition to Division I as part of the University's strategic plan to enhance the quality of campus life for all students.



Jule Shigihara

NJIT's teams compete throughout the United States, taking on opponents from schools that are instantly recognizable for their stature in academics and athletics.

NJIT student-athletes have faced opponents every Ivy League institution, as well as the Patriot League, including Army and Navy, Buckell, Lafayette, and Lehigh.

The Highlanders have also competed against teams from every Division I conference with teams either in the Northeast or Mid-Atlantic States, including the America East, American Athletic, Atlantic 10, Big East, Colonial Athletic Association, Metro Atlantic Athletic, Mid-Eastern Athletic, and Northeast.

The eighth New Jersey-based institution in Division I, NJIT has competed against all seven of its home state peers, including Rutgers and Seton Hall.

In addition, Highlander teams have taken on squads from power conferences such as the ACC, Big Ten, Big 12, and Pac-12.

NJIT joined its first Division I conference in 2009-10 when the Great West became an all-sports conference and women's tennis captured back-to-back league titles in 2011 and 2012. In 2012-13, the final year of the GWC, NJIT men's basketball was regular season champion and NJIT women's basketball was GWC Tournament champion.

Moving on from the Great West, NJIT women's tennis joined the America East Conference in 2013-14 and finished as conference runner-up in 2014, the Highlanders' first try at the AEC title. NJIT men's soccer began play as a member of the Sun Belt Conference in 2014. Also in 2013-14, NJIT

men's swimming became one of three new members in the Coastal Collegiate Swimming Association (CCSA).

In June 2015, NJIT and the Atlantic Sun Conference announced that the Highlanders would become the newest full member of the A-Sun. Founded in 1978 as the Trans America Athletic Conference, the conference took on its present name following the 2001 season.

The Atlantic Sun Conference will be the home of 13 of NJIT's varsity teams in 2015-16, with men's soccer moving over from the Sun Belt in 2016-17, bringing the total of A-Sun teams from NJIT to 14.



Julia Garcia, 2nd place, 2015 NCAA National Championships



Ian Constantin

Athletics Facilities



The New Jersey Institute of Technology teams play home games and practice in a combination of facilities on campus and off.

The on-campus facilities include Lubetkin Field at Mal Simon Stadium for outdoor sports and the Estelle and Zoom Fleisher Athletic Center for indoor sports. In addition, NJIT in 2011 opened is the Naimoli Family Athletic and Recreational Facility, a multi-purpose indoor facility on the site of the former outdoor tennis courts.

Off-campus venues include Bears and Eagles Riverfront Stadium, a professional minor league stadium that is the home of NJIT baseball; the Prudential Center, home of the NHL Devils and NBA Nets, which has hosted selected NJIT basketball games; and, Branch Brook Park in Newark and Van Cortlandt Park in the Bronx, home sites for NJIT cross country. All except for Van Cortlandt Park are less than two miles from the NJIT campus.

LUBETKIN FIELD AT MAL SIMON STADIUM

The men's and women's soccer teams play their home games and practice on campus at Lubetkin Field at Malc Simon Stadium, a first-class venue for college soccer.

The field on the west end of NJIT's University Heights campus is an all-weather facility, with 24/7 availability for competition or practice. Outfitted with SprinTurf artificial grass in the summer of 2004, Lubetkin Field at Mal Simon Stadium also includes lighting for night contests, bleacher seating for more than 1,200 spectators, a press box and scoreboard.

The fully-enclosed facility, with its entrance a few feet opposite the entrance of the indoor Estelle and Zoom Fleisher Athletic Center, can take its place alongside any college soccer facility in the Northeast.

The home of Highlanders soccer served as the host site for the first-ever Great West

Conference women's soccer championship tournament in November 2009. Previously, NJIT hosted the three-day 2005 ECAC Division II women's soccer championship tournament.

In the fall of 2005, when the Northeast was hit with record rainfall, games went on without a hitch at Lubetkin Field, thanks to the quality of the surface. Indeed, with the rain disrupting schedules around the region, some crucial Big East contests involving Seton Hall were moved to NJIT's home field. Those games, too, went off without a hitch.



The Estelle and Zoom Fleisher Athletic Center

ESTELLE AND ZOOM FLEISHER ATHLETIC CENTER

The NJIT men's and women's basketball teams and men's and women's volleyball teams play their home games in the Fleisher Athletic Center gymnasium, while the swimming and diving team competes and practices in building's pool. The Fleisher Center also houses intercollegiate fencing, as well as all athletic department offices, varsity and general weight and fitness rooms, and the athletic training room.

In the summer of 2006, the gym underwent renovation to include installation of a new floor and baskets, new lighting, new sound system and new scoreboards, along with entirely new seating for approximately 1,500 spectators after the first phase of renovation. The back bay 'C gym' can be sectioned off from the

main competition floor, making the facility useful for intramurals, physical education classes and campus recreation time, while being able to host multiple simultaneous events.

A six-lane swimming pool in Fleisher Athletic Center is home to the NJIT swimming team. Fencing has its own area on the second floor of the building.

In addition to all athletic department offices, the Fleisher Athletic Center also houses the sports medicine staff in the Athletic Training Room and the varsity weight room, supervised by the head strength and condition coach. The building's third floor is home to a fitness center, which is open for use by all students and staff.

Athletics Facilities



THE NAIMOLI FAMILY ATHLETIC & RECREATION FACILITY

Opened in 2011, the facility is approximately 25,600 square feet. The Naimoli Family Center will be a multi-purpose space for athletics, community recreation, and gatherings involving large numbers of people.

Built on top of the old outdoor tennis courts adjoining the Fleisher Athletic Center, construction of this new building has been made possible, in part, by a generous gift from Vincent Naimoli '62, Chairman and CEO of Anchor Industries International and Chairman Emeritus/ Founder of the Tampa Bay Rays major league baseball team.

The facility houses courts for tennis and is available for other athletic and recreational activities, including practice for basketball and volleyball. It is heated and air conditioned, with flooring appropriate for the intended athletics and recreational activities.

Its indoor tennis courts offer vital year round practice and playing opportunities for NJIT's intercollegiate tennis teams, which have been consistently successful in the transition to Division I. In 2011, the women's tennis team became NJIT's first conference championship team in the Division I era.

BRANCH BROOK PARK AND VAN CORTLANDT PARK

A hallmark of the NJIT cross country program under veteran coach Al Alonso is its ability to host cross country competition that have made Highlander-sponsored races a popular destination for schools from throughout the New York/New Jersey area.

In 2009, NJIT hosted the Great West Conference championships at Van Cortlandt Park in the Bronx, and the course, which is home to some of the most prestigious events in the sport, is also the home venue for other annual NJIT-hosted races. Branch Brook Park, which is a public park of Essex County, reaches into several towns, including Newark, with the park entrance less than a mile from the NJIT campus.

TRACK FACILITIES

The NJIT men's and women's indoor track & field team trains at the Jersey City Armory which is home to a 6-lane indoor 200m track while the outdoor track & field team trains at the Nat Turner Park 6-lane outdoor 400m track.



NJIT Athletics Weight Room at Estelle and Zoom Fleisher Athletic Center



RED BULL ARENA

Located in Harrison, NJ, just across the Passaic River from Newark and less than three miles from the NJIT campus, the new home of the New York Red Bulls (opened in March 2010) sets the standard for soccer venues across North America.

The state-of-the-art soccer-specific facility is a major component of a multi-billion dollar development.

Red Bull Arena has a number of key design elements which give its seating bowl a close-to-the-action feeling and the unique stadium roof design extends from its leading edge over the entire seating bowl and then curve down to the concourse.

The overall seating capacity for soccer is 25,000, including 30 luxury suites (20 lower level and 10 upper level) and 1,116 club seats. Other amenities include three stadium clubs and two retail outlets.

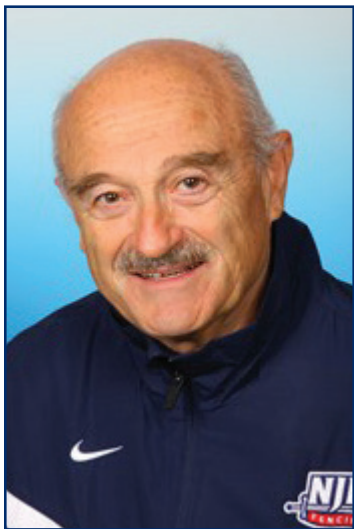


BEARS AND EAGLES RIVERFRONT STADIUM

Bears and Eagles Riverfront Stadium, the \$30 million state-of-the-art home of professional baseball and, since 2004, the home of NJIT Highlanders baseball, officially opened to the public on July 16, 1999. With a seating capacity of 6,200, "The Den" affords fans an up-close view of the action. The ballpark also has 20 luxury suites, a picnic area, a party deck, a concert stage situated behind the outfield wall and a major league-caliber press box.

In December 2005, NJIT and the Bears held a joint press conference to herald a new partnership that includes a 10-year deal that extends Bears and Eagles Riverfront Stadium as the home of NJIT Highlanders baseball.

Head Coach Yefim Litvan



Yefim Litvan, who has coached internationally for the United States in two Olympic Games and who recently completed a highly successful tenure as a college head coach at Rutgers University, became head coach of the men's and women's fencing teams at New Jersey Institute of Technology in 2007.

Litvan, who was honored as 2007 Coach of the Year by the United States Fencing

Association, entered college coaching in 1990. Since then, he has guided championship-level teams and individuals in both men's and women's fencing and in all three weapons of the sport--sabre, foil and epee.

An émigré from the former Soviet Union, Litvan became an assistant at the University of Pennsylvania in 1990, remaining there until being named head coach at Rutgers in New Brunswick, NJ, in June 1994. He was head coach of Rutgers until 2007 and then joined the NJIT staff.

He joined the United States National Team program in 1995 and was a coach in the 1996 and 2000 Olympic Games. Litvan, who also coached in the World University Games and in the Pan American Games, was on the US coaching staff for the fencing World Championships from 1995 to 1999.

In addition to his college and national team work, Litvan has coached at the New York Athletic Club since 1995 and worked with three fencers who have combined to compete in five Olympic Games, while combining to win six United States national championships.

In 13 years as coach at Rutgers, Litvan led his teams to 13 berths in the NCAA national championships. The teams consistently finished in the top 15 and made the top 10 in seven NCAA tournaments.

In the March 2007 NCAA national championships, Litvan guided his team to a 12th-place finish. It was the final varsity

fencing competition for Rutgers, which announced last year that it was eliminating six varsity intercollegiate sports, including fencing.

In 2003, under his tutelage, women's fencer Alexis Jemal, who had not competed interscholastically prior to college, captured the individual NCAA championship in the women's sabre. In 1996, Litvan's Rutgers team won the NCAA team championship in another weapon of fencing, the epee.

In four years at Penn, Litvan coached three All-Americans and two Ivy League team champions. The Penn women's team was second in the 1994 NCAA championship and the Penn sabre team was second at the NAAs in 1993 and third in 1994.

Litvan's coaching career began in the former Soviet Union in 1959, when he was based in Ukraine. Before immigrating to the United States, more than 20 of his protégés achieved the rank of Master of Sports in the former USSR.

At NJIT, he leads a sport with one of the longest, richest traditions at the school, with records dating back to 1935-36 on the men's side. A separate women's program was founded in 1982-83 and competed until 1990-91. The women's program was re-established in 2003-04 and continues as a Highlander varsity sport.



Assistant Coach Jason Henderson



Jason Henderson, a star fencer for four years under the tutelage of Yefim Litvan at Rutgers University, was reunited with his old coach in the summer of 2010, signing on as an assistant coach at NJIT on the staff headed since 2007 by Litvan. In 2015

Henderson was awarded the USFA National Team Champion Coach's Medal for Senior Team Women's Epee.

Henderson's recruiting and scheduling efforts have drastically improved the athletic caliber of the athletes and strength of the season. NJIT now competes against 18 out of the top 25 programs in the country and 7 out of the top 10. During the 2014-15 season NJIT gained national attention as it was ranked on the national coaches poll for the first time in school history.

Henderson, who graduated from Rutgers cum laude in January 2008, was a two-time NCAA All-American and four-time NCAA National Championship participant in a four-year career from 2003 to 2007.

A three-year team captain, Henderson graduated with a double major in sports management and philosophy, making the dean's list for eight semesters and earning numerous awards for academic excellence and leadership.

Henderson was a member of the National Society of Collegiate Scholars; Rutgers Fencing MVP in 2004;



Dean's Award for Co-Curricular Excellence; SAAC representative; Cap and Skull Honor Society; Athletic Director's Excellence Award; and, Chi Alpha Sigma—National Athlete Honor Society.

Out of more than 460,000 NCAA student-athletes, Henderson was one of only 174 recipients of the NCAA Post-Graduate Scholarship, the first student-athlete from Rutgers University to earn the scholarship in three years. He went on to both graduate and law school, earning a Master of Management Studies in May 2010 from Duke University's Fuqua School of Business and a Juris Doctorate in 2015 from Rutgers School of Law.

He is co-founder and director of Air Castles and Slides, LLC, and ACVI Internet and Business Services, LLC, both based in Edison, NJ.

Henderson resides in Roselle, NJ.

Assistant Coach Danielle Henderson



A 2010 graduate of Rutgers University with a double major in Cultural Anthropology and Philosophy, Danielle Henderson has built a remarkable list of accomplishments as a scholar and as an athlete, particularly in fencing.

She joined the NJIT fencing coaching staff in 2014-15, where she was reunited with her college coach, Yefim Litvan, and she also works alongside her older brother, NJIT assistant coach Jason Henderson, a two-time All-American for Rutgers in his own right.

Danielle earned a master's in philosophy in Cultural Anthropology from Cambridge University in England in 2011 and earned her JD from the University of Pennsylvania in 2015.

She is a 3-time national champion and member of bronze medal team at the 2015 World University Games in Seoul, South Korea.

On the fencing strip, she was an All-American at Rutgers and also earned a "Full Blue" (highest honor in British University sport, fencing for Cambridge.

An international-level fencer, she was a member of the 2009 United States Pan American Games (western hemisphere) team champions and was a two-time national champion and United States World team member.

On top of all that, in addition to being the Most Valuable Player of the Rutgers fencing team, she was also a letter winner on the Rutgers women's rowing team and was that team's top erg score.



Assistant Coach Ben Igoe



A 2007 graduate of Rutgers University, Ben Igoe joins the NJIT fencing staff in 2015-16 season.

Igoe, who attended Rutgers with assistant coach Jason Henderson, is a four-time All-American fencer, Senior World Team member and two-time Pan American Champion.

He has won two Division I North American Cups and has been a finalist in several more.

Currently playing for the New York Athletic Club, Igoe ranks No.9 in the U.S on the saber strip.

2015-16 Rosters

MEN'S FENCING

NAME	YR.	WEAPON	HOMETOWN / HS	CLSF.
Ege Ayan	Fr.	Epee	Ankara, Turkey / TED Ankara Koledi	C
Dan Boylan	Fr.	Epee	Wharton, NJ / Morris Knolls	C
Nicholas Concepcion	Fr.	Foil	Jackson, NJ / Homeschooled	B
Ian Constantin	Sr.	Epee	Roselle Park, NJ / Academy for Information Technology (Scotch Plains, NJ)	D
Tristan Decker	Fr.	Epee	Bernardsville, NJ / Bernards	A
Cole Degeorges	So.	Sabre	Warren, NJ / Watchung Hills Regional	B
Eduardo Ezcurra	So.	Epee	Las Rozas, Madrid / Colegio Europeo de Madrid	A
Gal Gluhic	So.	Epee	Ljubljana, Slovenia / Gimnazija Bezigrad	C
Ryan Hrapsky	Jr.	Epee	Point Pleasant Beach, NJ / Point Pleasant Beach	A
David Kong	Jr.	Foil	Rutherford, NJ / St. Peter's Prep	A
Henrique Marques	So.	Foil	São Paulo, Brazil / Colégio Porto Seguro	A
Andrew Mendez	So.	Sabre	Newark, NJ / Queen of Peace	
Maxwell Miller	Sr.	Foil	Harrington Park, NJ / Northern Valley Regional	E
Greg Puccio	Fr.	Sabre	Warren, NJ / Watchung Hills	A
Tristan Quinton	Fr.	Sabre	Colonia, NJ / Union Catholic	B
Simon Rizell	So.	Foil	Gothenburg, Sweden	B
Chris Saulys	Fr.	Foil	Metuchen, NJ / St. Joseph Metuchen	A
Robert Slawinski	So.	Sabre	Middletown, NJ / Middletown	C

WOMEN'S FENCING

NAME	YR.	WEAPON	HOMETOWN / HS	CLSF.
Abigail Bazile	Sr.	Epee	Teaneck, NJ / Teaneck	U
Tess Dalton	Fr.	Sabre	Hamilton, NJ / Steinert	U
Julia Garcia	So.	Epee	Madrid, Spain / Camilo Jose	B
Necha Jagtap	Fr.	Foil	Paramus, NJ / Paramus	U
Katarina Jevtic	So.	Sabre	West Allis, WI / Nathan Male	U
Nia Johnson	So.	Sabre	Hillside, NJ / Roselle Catholic	U
Mehnaz Moon	So.	Sabre	Egg Harbor Township, NJ / Agrabad Women's College	U
Lenna Nashif	Jr.	Foil	Franklin Park, NJ / Noor-Ul-Iman School	U
Michelle Potestio	Sr.	Foil	Staten Island, NY / Tottenville	D
Rebecca Richmond	Sr.	Epee	Linwood, NJ / Mainland Regional	U
Jule Shighihara	So.	Foil	Bonn, Germany / Christophorusschule	C
Maria Sztan	Fr.	Epee	Bridgewater, NJ / Bridgewater-Raritan Regional	B

Julia Garcia Takes Home Silver at 2015 NCAA Fencing Championships

NJIT freshman Julia Garcia made history, placing second in the women's epee event at the 2015 NCAA Fencing Championships held at Ohio State in St. John Arena on March 22, 2015.

Garcia, a freshman from Madrid, Spain, is the first female fencer to compete in the National Championship and becomes the newest NJIT All-American.

The freshman, who is ranked the No. 1 junior women's epee fencer in Spain, faced No.1 seed Victoria Wines of Cornell in the Top 4. Garcia defeated Wines, 15-11, advancing to the gold medal bout.

In the finals, Garcia dropped a 15-6 decision to eventual winner Isis Washington of St. John's to earn a silver medal.



Program History—Men

YEAR	W-L	COACH	CAPTAINS	MVP
1935-36	4-6			---
1936-37	4-6			---
1937-38	9-1	Norman Wyckoff		---
1938-39	8-3-1	Norman Wyckoff		---
1939-40	7-1	Norman Wyckoff		---
1940-41	6-2	Norman Wyckoff		---
1941-42	7-0	A. John Geraci (player)		---
1942-43		no team – World War II		
1943-44		no team – World War II		
1944-45		no team – World War II		
1945-46		no team – World War II		
1946-47	3-1	Smith		---
1947-48	5-4	Smith (8-5)		---
1948-49	5-0	Pelegrino Ringi		---
1949-50	9-0	Pelegrino Ringi		---
1950-51	8-0	Pelegrino Ringi		---
1951-52	8-1	Pelegrino Ringi	Hamilton Bowser,	---
1952-53	7-1	Pelegrino Ringi (37-2)		---
1953-54	7-1	Paul Hausser		---
1954-55	5-3	Paul Hausser		---
1955-56	6-2	Paul Hausser		---
1956-57	8-1	Paul Hausser		---
1957-58	7-2	Paul Hausser		---
1958-59	6-2	Paul Hausser		---
1959-60	8-2	Paul Hausser		---
1960-61	7-1	Paul Hausser		---
1961-62	10-3	Paul Hausser		---
1962-63	8-5	Paul Hausser		---
1963-64	7-5	Paul Hausser		---
1964-65	6-5	Paul Hausser		---
1965-66	7-6	Paul Hausser		Stan Karamanol
1966-67	7-6	Paul Hausser	Bruce Killy, Oleg Moiseenko	Oleg Moiseenko
1967-68	7-6	Paul Hausser		Len Teslenko
1968-69	8-3	Paul Hausser		Mike Morse
1969-70	7-6	Paul Hausser		George Martinez
1970-71	8-4	Paul Hausser		Greg Soriano
1971-72	11-1	Paul Hausser		Garbor Hauer
1972-73	7-7	Paul Hausser		Gary Marso
1973-74	4-8	Paul Hausser		Jay Haase
1974-75	6-6	Paul Hausser		Jay Haase
1975-76	3-8	Paul Hausser		Jerry Spiesback
1976-77	6-6	Paul Hausser		Bob Lynch
1977-78	5-4	Paul Hausser		Peter Wessner
1978-79	3-7	Paul Hausser		Bob Lynch
1979-80	4-7	Paul Hausser		Bob Lynch
1980-81		Paul Hausser		Steve Colucci
1981-82		Paul Hausser	Steve Colucci	Steve Colucci
1982-83		Paul Hausser		Peter An
1983-84		Paul Hausser		Ron Heisler
1984-85	1-8	Paul Hausser		Ron Heisler
1985-86	2-9	Bob Lynch	Ernie DeRosa	Ernie DeRosa
1986-87	1-9	Bob Lynch	Ernie DeRosa	David Cruz

YEAR	W-L	COACH	CAPTAINS	MVP
1987-88	1-9	Bob Lynch		Saul Cruz
1988-89	1-9	Bob Lynch	Chris Kaplonski	Chris Kaplonski
1989-90	2-10	Bob Lynch	Mohammed Shafaie	Wayne Holness
1990-91	4-11	Bob Lynch (11-57)	Stephen Muccione	Mohammed Shafaie
1991-92*	10-4	George LaTorre	Patrick Clune, Fabian Herrera	Patrick Clune
1992-93*	11-6	George LaTorre (21-10)	P. Clune, J. Javier, F. Herrera	Patrick Clune
1993-94		Vladimir Lilov		Jeff Day
1994-95	5-10	Craig Garretson	Geovani Morales	David Johnson
1995-96	5-10	Craig Garretson	Idan Mandelbaum	Edwin Herrera
1996-97		Craig Garretson	Idan Mandelbaum	Idan Mandelbaum
1997-98	4-12	Craig Garretson		Hans Gangwar
1998-99	6-11	Craig Garretson		George Lane
1999-2000	5-11	Idan Mandelbaum		Thomas Nemeth
2000-01	2-16	Idan Mandelbaum (7-27)		Ian LaFond
2001-02	3-15	J. Mlynek/W. Rak	Chris Aliprantis	Ian LaFond
2002-03	9-5	Janusz Mlynek	Chris Aliprantis, Ian LaFond	Phil Dolata
2003-04	5-8	Janusz Mlynek	P. Dolata, M. Edzenga, I. LaFond	Phil Dolata
2004-05	6-11	Janusz Mlynek	Matt Edzenga, Michael Goldsmith	---
2005-06	0-12	Mac Shaker	Rob Tani, Michael Konchalski	Rob Tani
2006-07	1-14	Janusz Mlyneck	Rob Tani	Rob Tani
2007-08	1-17	Yefim Litvan	Javier Vasques	---
2008-09	6-18	Yefim Litvan	Zachary Hvizdak	
* IAC Champion				
2009-10	9-10	Yefim Litvan	Zachary Hvizdak	---
2010-11	6-12	Yefim Litvan	Max McDermott	---
2011-12	6-12	Yefim Litvan	Max McDermott	---
2012-13	8-12	Yefim Litvan	Max McDermott	Guillaume Lanteri
2013-14	6-16	Yefim Litvan	Bryan Ransinangue	David Kong
2014-15	18-9	Yefim Litvan	Ian Constantin	Simon Rizell

Program History—Women

YEAR	W-L	COACH	CAPTAINS	MVP
1982-83		Bob Lynch		Miya Fennar
1988-89	---	Bob Lynch	none	Sarah Rees
1989-90	0-??	Bob Lynch		Ana Sofia Nolau
1990-91	0-??	Frank Wadas		Ellen Duffy
2003-04	1-9	Janusz Mlynek	Crystal Cooper	Deepti Sanjai
2004-05	1-10	Janusz Mlynek	Michelle Paulter	Deepti Sanjai
2005-06	1-10	Mac Shaker	Deepti Sanjai, Nyakiyo Kairu	Deepti Sanjai
2006-07	0-10	Janusz Mlynek	Jennifer Olsztyn	Jennifer Olsztyn
2007-08	0-2	Yefim Litvan	Nicole Fagundo	---
2008-09	0-3-1	Yefim Litvan	Vanessa Jorge	---
2009-10	1-16	Yefim Litvan	---	---
2010-11	4-9	Yefim Litvan	Jennifer Ramos	
2011-12	3-6	Yefim Litvan	Jennifer Ramos	---
2012-13	6-10	Yefim Litvan	Julia Aronov	Julia Graham
2013-14	5-14	Yefim Litvan	Julia Aronov	Julia Aronov
2014-15	5-19	Yefim Litvan	Julia Aronov	Julia Garcia

Note: All blank information is not on file. Anyone with documentable proof of missing information is asked to contact NJIT Sports Information at (973) 596-8324 or pillari@njit.edu

Men's Year-by-Year Results

1935-1936 (4-6)

1/17	vs. Alumni	L	5-12
2/16	vs. Lehigh	L	8-9
	vs. Stevens	L	11-16
3/20	vs. Montclair Teachers	W	9-7
3/21	vs. Stevens	L	13-14
3/26	vs. Upsala	W	6-3
	vs. Princeton	L	5-12
	vs. Pahzer	L	4-5
	vs. Montclair Teaches	W	6-3

1936-1937 (4-5)

1/8	vs. Lafayette	L	2-15
1/14	vs. Montclair	L	4-5
2/20	vs. Lehigh	W	11-6
2/27	vs. Montclair	W	8-1
3/6	vs. Wagner	W	14-3
3/13	vs. Lafayette	L	5-12
3/20	vs. Temple	L	6-11
4/3	vs. Stevens	L	8-9
4/24	vs. Alumni	W	9-8

1937-1938 (9-1)

12/18	vs. Wagner	W	11-6
1/8	vs. Lafayette	L	8-9
1/15	vs. Montclair	W	5-4
2/12	vs. Newark University	W	7-2
2/19	vs. Panzer	W	6-3
2/26	vs. Temple	W	9-8
3/5	vs. Lehigh	W	9-8
3/12	vs. Drew	W	10-7
3/19	vs. NTS	W	8-1
3/26	vs. Alumni	W	10-7

Coach: Norman Wyckoff

1938-1939 (8-3-1)

12/17	vs. Newark University	W	10-7
1/7	vs. Montclair State	W	13-4
1/14	vs. Alumni	L	8-9
1/21	vs. Drew	W	9-8
2/4	vs. Wagner	L	8-9
2/11	vs. Panzer	W	9 ½ - 8 ½
2/18	vs. Temple	W	15-2
3/4	vs. Marlin Swim Club	T	
3/11	vs. Fordham	W	10-7
3/25	vs. Newark University	W	15-2
4/1	vs. Lafayette	W	9-8

Coach: Norman Wyckoff

1939-1940 (7-1)

12/16	vs. Montclair State	W	12-5
1/6	vs. Cooper Union	W	5-4
1/12	vs. L.I.U.	L	7-10
2/3	vs. Drew	W	12-5
2/9	vs. Newark State	W	5-4



Eduardo Ezcurra, 2015 NCAA National Championship Participant

2/17	vs. Brooklyn College	W	10-7
2/24	vs. Wagner	W	10-7
3/2	vs. Temple University	W	9-8

Coach: Norman Wyckoff

1940-1941 (6-2)

12/2	vs. Panzer	W	9-8
1/4	vs. Cooper Union	W	7-2
1/18	vs. Panzer	L	7-10
1/25	vs. Newark State	W	8-1
2/8	vs. Temple	W	9-8
2/15	vs. Drew	W	10-7
2/22	vs. Montclair State	L	8-9
3/1	vs. Wagner	W	9-8

Coach: Norman Wyckoff

1941-42

Hudson	L
Newark State Teachers	L
Panzer	
Drew	
Brooklyn	
Cooper Union	
Temple	
Wagner	
Philadelphia	

Coach: A. John Geraci (player)

** Schedule Incomplete

1947-48

vs. Stevens	W	5-4
vs. Stevens	T	4-4
vs. Panzer	W	6-3
vs. Cooper Union	L	7-9
vs. Drew	W	5-4
vs. Drew	L	5-8
vs. Paterson Teachers	W	5-4
vs. Paterson Teachers	L	4-5
vs. Stevens	W	9-0
vs. Newark Bombers	T	8-8

Coach: Ben D'Armiento (player and captain)

** Schedule Incomplete

1949-1950 (7-2)

12/17	at Stevens	L	9-18
1/7	at Lafayette	W	15-12
1/14	NEWARK RUTGERS	W	8-4
1/21	MONTCLAIR STATE	W	10-6
2/18	at Drew	L	11 ½- 15 ½
2/25	COOPER UNION	W	16 ½- 10 ½
3/4	SAINT PETER'S	W	19-8
3/18	at Paterson State	W	16-11
3/25	JERSEY CITY STATE	W	

Coach: Pelegrino Ringi

1950-1951 (8-0)

12/16	vs. Newark Rutgers		
1/13	MONTCLAIR STATE	W	9-0
1/20	PACE	W	19-8
2/10	at Saint Peter's	W	20-7
2/17	PATERSON STATE T.C	W	17-10
2/24	LAFAYETTE	W	17-10
3/3	at Stevens	W	14-13
3/9	vs. Paterson State		
3/10	at Cooper Union	W	16-11
3/17	DREW	W	15-12
3/24	vs. Fordham		
3/31	N.C.E. Invitation Tournament		

Coach: Pelegrino Ringi

1951-1952 (8-1)

1/12	at Lafayette	W	16-11
1/19	FORDHAM	W	15-12
2/2	at Drew	W	15-12
2/16	NEWARK RUTGERS	W	18-9
2/23	SAINT PETER'S	W	17-10
3/1	STEVENS TECH	W	15-12
3/8	MONTCLAIR STATE	W	20-7
3/15	at Paterson State	L	13-14
3/22	Tournament		
3/29	COOPER UNION	W	17-10

Coach: Pelegrino Ringi

** Schedule Incomplete

1952-1953 (7-1)			
1/10	PATERSON STATE	W	17-10
1/31	vs. at Fordham	W	15-12
2/14	DREW	W	16-11
2/21	at Cooper Union	W	16-11
3/7	LAFAYETTE	W	16-11
3/21	at Stevens	W	14-13
3/28	vs. NEWARK RUTGERS	W18-9	
4/4	at Saint Peter's	L	13-14
Coach: Pelegrino Ringi			

1953-1954 (7-1)			
1/9	vs. Pace	W	16-11
1/30	vs. Fordham	W	16-11
2/13	vs. Drew	L	12-15
2/20	vs. Cooper Union	W	21-6
3/6	vs. Lafayette	W	16-11
3/13	vs. Newark Rutgers	W	15-12
3/20	vs. Stevens	W	15-12
3/27	vs. Saint Peter's	W	14-13
Coach: Paul Hausser			

1954-1955 (5-3)			
	vs. Yeshiva	L	12-15
	vs. FDU	W	20-7
	vs. Pace	W	16-11
	vs. Drew	W	14-13
	vs. Cooper Union	W	15-12
	vs. St. Peter's	L	12-15

	vs. Stevens	L	13-14
	vs. Newark Rutgers	W	14-13
Coach: Paul Hausser			
** Schedule Incomplete			

1955-1956 (6-2)			
	vs. FDU	W	19-8
	vs. Pace	W	17-10
	vs. Yeshiva	L	13-14
	vs. Drew	L	12-15
	vs. Cooper Union	W	15-12
	vs. St. Peter's	W	16-11
	vs. Stevens	W	16-11
	vs. Newark Rutgers	W	16-11
Coach: Paul Hausser			
** Schedule Incomplete			

1956-1957 (8-1)			
	vs. Brooklyn Poly	W	14-13
	vs. Yeshiva	W	14-13
	vs. FDU	W	21-6
	vs. Cooper Union	W	20-7
	vs. Drew	W	18-9
	vs. St. Peter's	W	16-11
	vs. Stevens	L	11-16
	vs. Newark Rutgers	W	16-11
	vs. Pace	W	18-9
Coach: Paul Hausser			
**Schedule Incomplete			

1957-1958 (5-2)			
	vs. Drew	W	15-12
	vs. Pace	W	17-10
	vs. FDU	W	20-7
	vs. Brooklyn Poly	L	9-18
	vs. Cooper Union	W	20-7
	vs. St. Peter's	W	17-10
	vs. Stevens	L	13-14
Coach: Paul Hausser			
** Schedule Incomplete			

1958-1959 (6-2)			
	vs. Pace	L	12-15
	vs. Drew	W	14-13
	vs. Saint Peter's	W	15-12
	vs. FDU	W	15-12
	vs. Cooper Union	W	18-9
	vs. Newark-Rutgers	W	14-13
	vs. Brooklyn Poly	W	15-12
	vs. Stevens	L	10-17
Coach: Paul Hausser			
**Schedule Incomplete			

1959-1960 (8-2)			
	vs. Pace	W	14-13
	vs. Paterson State	W	16-11
	vs. Jersey City	W	23-4
	vs. Drew	W	14-13
	vs. Saint Peter's	W	Forfeit
	vs. FDU	W	16-11
	vs. Cooper Union	W	18-9
	vs. Newark-Rutgers	W	14-13
	vs. Brooklyn Poly	L	12-15
	vs. Stevens	L	13-14
Coach: Paul Hausser			
** Schedule Incomplete			

1960-1961 (6-3)			
	vs. St. Peter's	W	14-13
	vs. Jersey City	W	14-13
	vs. Pace		cancelled
	vs. RIT		cancelled
	vs. Drew	W	14-13
	vs. Cooper Union		cancelled
	vs. FDU	W	14-13
	vs. Paterson State	W	15-12
	vs. Newark Rutgers	L	11-16
	vs. Brooklyn Poly	W	14-13
	vs. Stevens	L	13-14
Coach: Paul Hausser			
**Schedule Incomplete			

1961-1962 (10-3)			
	vs. Saint Peter's	L	9-18
	vs. Jersey City	W	16-11
	vs. Seton Hall	W	16-11
	vs. Temple	W	16-11
	vs. Cooper Union	L	12-15
	vs. Brooklyn Poly	W	17-10
	vs. FDU	W	17-10
	vs. Paterson State	W	18-9
	vs. Newark Rutgers	L	13-14
	vs. RIT	W	14-13
	vs. Pace	W	15-12
	vs. Drew	W	14-13
	vs. Stevens	W	16-11
Coach: Paul Hausser			
**Schedule Incomplete			

1962-1963 (8-5)			
	vs. Jersey City	W	18-9
	vs. Seton Hall	W	14-13
	vs. Temple	W	14-13
	vs. MIT	W	14-13
	vs. Cooper Union	L	12-15
	vs. Brooklyn Poly	W	14-13
	vs. St. Peter's	L	12-15
	vs. Paterson State	W	14-13
	vs. Newark Rutgers	L	13-14



Ryan Hrapsky

Men's Year-by-Year Results

vs. RIT	W	15-12
vs. Pace	W	15-12
vs. Drew	L	13-14
vs. Stevens	L	13-14

Coach: Paul Hausser

****Schedule Incomplete**

1963-1964 (7-5)

vs. Jersey City	W	19-8
vs. Seton Hall	L	12-15
vs. Temple	W	15-12
vs. Pace	W	15-12
vs. RIT	cancelled	
vs. Paterson State	L	8-19
vs. Saint Peter's	W	14-13
vs. Stevens	W	16-11
vs. Brooklyn Poly	W	15-12
vs. MIT	L	13-14
vs. Newark Rutgers	W	15-12
vs. West Point	L	12-15
vs. Drew	L	11-16

Coach: Paul Hausser

****Schedule Incomplete**

1964-1965 (6-5)

vs. Jersey City	L	13-14
vs. Temple	W	14-13
vs. Stevens	W	14-13
vs. Brooklyn Poly	L	13-14
vs. Saint Peter's	W	18-9
vs. Paterson State	L	13-14
vs. West Point	L	12-15
vs. Montclair State	W	20-7
vs. Newark Rutgers	L	10-17
vs. Seton Hall	W	17-10
vs. Drew	W	14-13

Coach: Paul Hausser

****Schedule Incomplete**

1966-1967 (7-7)

vs. Seton Hall	L	12-15
vs. RIT	L	10-17
vs. Hobart	W	20-7
vs. Pace	L	11-16
vs. Temple	L	10-17
vs. Montclair State	W	18-9
vs. St. Peter's College	W	14-13
vs. Jersey City	W	15-12
vs. West Point	L	9-18
vs. Brooklyn Poly	L	11-20
vs. Stevens	L	11-16
vs. Newark Rutgers	W	15-12
vs. Paterson State	W	16-11
vs. Drew	W	16-11

Coach: Paul Hausser

****Schedule Incomplete**

1967-1968 (7-6)

vs. Seton Hall	L	12-15
vs. Saint Peter's	W	18-9
vs. Penn State	W	15-12
vs. Temple	L	9-18
vs. Paterson State	W	14-13
vs. West Point	L	8-19
vs. Jersey City	W	19-8
vs. Montclair State	W	16-11
vs. RIT	W	16-11
vs. Stevens	L	12-15
vs. Newark Rutgers	L	14-13
vs. Brooklyn Poly	W	14-13
vs. Drew	L	10-17

Coach: Paul Hausser

****Schedule Incomplete**

1968-1969 (8-3)

vs. Seton Hall	W	17-10
vs. Stevens	W	18-9
vs. West Point	L	11-16
vs. Temple	L	13-14
vs. Paterson State	W	15-12
vs. Jersey City	W	27-0
vs. Drew	W	20-7
vs. Montclair State	W	14-13
vs. Penn State	L	10-17
vs. Newark Rutgers	W	20-7
vs. Saint Peter's	W	18-9

Coach: Paul Hausser

****Schedule Incomplete**

1969-1970 (7-6)

vs. Stevens	L	13-14
vs. Jersey City	W	25-2
vs. Temple	L	12-15
vs. Montclair State	L	6-21
vs. Paterson State	W	18-9
vs. Brooklyn	W	17-10
vs. Drew	W	17-10
vs. Penn State	L	9-18
vs. St. John's	L	12-15
vs. Hobart	W	19-8
vs. Newark Rutgers	W	15-12
vs. Seton Hall	L	12-15
vs. Saint Peter's	W	22-5

Coach: Paul Hausser

****Schedule Incomplete**

1970-1971 (7-5)

vs. Jersey City	W	20-7
vs. Paterson State	W	15-12
vs. Temple	L	11-16
vs. Brooklyn	W	20-7
vs. Montclair State	L	9-18
vs. Drew	W	20-7



Simon Rlzell, 2015 NCAA National Championship Participant

vs. Seton Hall	W	16-11
vs. Penn State	L	13-14
vs. St. John's	L	11-16
vs. Newark Rutgers	W	18-9
vs. Stevens	L	13-14
vs. Saint Peter's	W	18-9

Coach: Paul Hausser

****Schedule Incomplete**

1971-1972 (10-2)

vs. Jersey City	W	20-7
vs. Temple	L	8-19
vs. Seton Hall	L	10-17
vs. Brooklyn	W	14-13
vs. Montclair State	W	14-13
vs. Drew	W	20-7
vs. Penn State	W	16-11
vs. Newark Rutgers	W	14-13
vs. William Paterson	W	15-12
vs. Stevens	W	15-12
vs. St. Peter's	W	17-10
vs. FDU-Madison	W	20-7

Coach: Paul Hausser

****Schedule Incomplete**

1972-1973 (7-7)

vs. Jersey City	W	20-7
vs. Pratt	W	15-12

vs. Temple	W	Forfeit
vs. Seton Hall	L	11-16
vs. Brooklyn	L	10-17
vs. Montclair State	L	12-15
vs. Drew	L	13-14
vs. Penn State	L	12-15
vs. Paterson	L	9-18
vs. Newark Rutgers	W	15-12
vs. Stevens	L	13-14
vs. Saint Peter's	W	16-11
vs. FDU-Madison	W	18-9
vs. CCM	W	20-7

Coach: Paul Hausser

**Schedule Incomplete

1973-1974 (4-8)

vs. Jersey City	W	18-9
vs. Pratt	W	Forfeit
vs. Temple	L	9-18
vs. Seton Hall	L	10-17
vs. Montclair State	L	10-12
vs. Drew	L	12-15
vs. Penn State	L	6-21
vs. Paterson	L	12-15
vs. Newark Rutgers	L	11-16
vs. Stevens	L	11-16
vs. Saint Peter's	W	19-8
vs. FDU-Madison	W	18-4

Coach: Paul Hausser

**Schedule Incomplete

1974-1975 (6-6)

vs. Jersey City	W	15-12
vs. Temple	L	12-15
vs. Seton Hall	L	8-19
vs. Kean	W	Forfeit
vs. Montclair State	L	13-14
vs. Drew	W	17-10
vs. Pratt	W	14-13
vs. Penn State	L	6-21
vs. Newark Rutgers	L	13-13
(Fence off 3-0)		
vs. Stevens	L	13-14
vs. William Paterson	cancelled	
vs. St. Peter's	W	20-7
vs. FDU-Madison	W	Forfeit

Coach: Paul Hausser

**Schedule Incomplete

1975-1976 (3-8)

1/17	at Temple	L	9-18
1/21	at Seton Hall	L	5-22
1/24	KEAN	W	Forfeit
1/28	at Montclair State	W	16-11
1/31	DREW	L	6-21
2/4	at Pratt	W	Forfeit

2/7	at Penn State	cancelled
2/11	WILLIAM PATERSON	L 4-23
2/14	at Newark Rutgers	L 8-19
2/18	STEVENS	L 4-23
2/21	at Jersey City	L 7-20
2/25	SAINT PETER'S	L 10-17
2/28	CCNY	cancelled

Coach: Paul Hausser

**Schedule Incomplete

1976-1977 (6-6)

vs. Temple	W	Forfeit
vs. Seton Hall	L	5-22
vs. Haverford	W	15-12
vs. UMBC	W	14-13
vs. Montclair State	W	16-11
vs. Drew	L	10-17
vs. William Paterson	L	9-18
vs. Rutgers-Newark	L	11-16
vs. Stevens	L	11-16
vs. Jersey City	W	18-9
vs. Saint Pete's	W	19-8
vs. CCNY	L	7-20

Coach: Paul Hausser

**Schedule Incomplete

1977-1978 (5-4)

vs. Temple	L	12-17
vs. Seton Hall	L	12-15
vs. Haverford	cancelled	
vs. UMBC	cancelled	
vs. Montclair State	W	22-5
vs. Drew	W	15-12
vs. William Paterson	cancelled	
vs. Newark Rutgers	W	18-9
vs. Stevens	L	10-17
vs. Jersey City	W	17-12
vs. Saint Peter's	W	19-8
vs. CCNY	L	13-14

Coach: Paul Hausser

**Schedule Incomplete

1979-1980 (5-6)

vs. Temple	L	8-19
vs. Seton Hall	W	16-11
vs. Haverford	W	16-11
vs. Muhlenberg	L	11-16
vs. Drew	W	15-12
vs. Paterson	L	9-18
vs. Newark Rutgers	L	13-14
vs. Stevens	L	13-14
vs. Jersey City	W	Forfeit
vs. Saint Peter's	W	18-9
vs. CCNY	L	8-19

Coach: Paul Hausser

**Schedule Incomplete

1980-1981 (5-5)

vs. Temple	L	8-19
vs. Seton Hall	W	14-13
vs. Saint Peter's	W	15-12
vs. NYU Poly	W	17-10
vs. Drew	L	13-14
vs. Newark Rutgers	L	10-17
vs. William Paterson	L	8-19
vs. Jersey City	W	4-3
vs. Stevens	L	10-17
vs. CCNY	cancelled	
vs. Yeshiva	W	18-9

Coach: Paul Hausser

**Schedule Incomplete

1981-1982 (5-7)

vs. Temple	L	12-15
vs. George Mason	W	Forfeit
vs. Seton Hall	L	13-14
vs. Johns Hopkins	L	12-15
vs. Drew	L	11-16
vs. Newark-Rutgers	L	11-16
vs. William Paterson	L	7-20
vs. Saint Peter's	W	14-13
vs. Haverford	L	10-17
vs. Lafayette	W	14-13
vs. Yeshiva	W	19-8
vs. Stevens	W	14-13



Henrique Marques

Men's Year-by-Year Results

vs. NYU Poly
vs. Jersey City

cancelled
cancelled

Coach: Paul Hausser

**Schedule Incomplete

2005-2006 (0-8)

11/13 SACRED HEART L 2-25

Stevens Invitational

11/20 vs. Johns Hopkins L 2-25

11/20 vs. Yeshiva L 6-21

11/20 at Stevens L 3-24

11/20 vs. Hunter L 7-20

Johns Hopkins Invitational

1/29 vs. Virginia Tech L 3-24

1/29 vs. Virginia L 6-21

1/29 vs. William & Mary L 3-24

1/29 at Johns Hopkins postponed

2/5 at Sacred Heart postponed

2/12 CORNELL postponed

2/12 DREW postponed

2/12 LAFAYETTE postponed

2/12 ARMY postponed

2/12 HAVERFORD postponed

2/19 ARMY

2/19 HAVERFORD

2/19 DREW

2/19 CORNELL

2/19 LAFAYETTE L 2-25

Coach: Mac Shaker

**Schedule Incomplete

2006-2007 (1-15)

Stevens Invitational

11/19 vs. Hunter W 14-13

11/19 vs. Yeshiva L 7-20

11/19 at Stevens L 1-26

Army Invitational

1/21 vs. Stony Brook L 2-25

1/21 at Army L 2-25

1/21 vs. Hunter L 5-22

Johns Hopkins Invitational

1/28 vs. Virginia Tech L 10-17

1/28 vs. Virginia L 11-14

1/28 vs. William & Mary L 0-27

1/28 vs. Maryland L 5-22

1/28 vs. St. John's (MD) L 6-21

2/11 HAVERFORD** L 0-27

2/11 ARMY** L 2-25

2/11 LAFAYETTE** L 6-21

2/11 CORNELL** L 2-25

2/11 DREW** L 1-26

3/4 vs. Hunter (at Drew) postponed

Coach: Janusz Mlynec

** Home games played in Maplewood, NJ

2007-2008 (1-13)

Stevens Invitational

12/2 vs. Yeshiva L 12-15

12/2 vs. Hunter L 8-14

12/2 at Stevens L 7-20

12/2 vs. Johns Hopkins L 1-26

12/9 vs. Yeshiva (at Sacred Heart)W 16-11

12/9 at Sacred Heart

Johns Hopkins Invitational

1/27 vs. William & Mary

1/27 vs. Maryland L 4-23

1/27 vs. Virginia L 11-16

1/27 vs. Virginia Tech L 8-19

1/27 vs. St. John's (MD) L 11-16

1/27 vs. North Carolina L 1-26

2/10 HAVERFORD L 1-26

2/10 CORNELL L 8-19

2/10 ARMY L 6-21

2/10 LAFAYETTE L 12-15

2/10 DREW

2/21 PRINCETON

Coach: Yefim Litvan

**Schedule Incomplete

2008-2009 (6-18)

Haverford Invitational

11/9 at Haverford L 3-24

11/9 vs. North Carolina L 3-24

11/9 vs. William & Mary L 10-17

11/9 vs. Virginia W 18-9

11/9 vs. Virginia Tech W 19-8

11/9 vs. Johns Hopkins L 5-22

UPenn Invitational

1/11 at Penn L 0-27

1/11 vs. Duke L 1-26

1/11 vs. UNC L 4-23

1/11 vs. Drew L 5-22

1/11 vs. Sacred Heart L 9-18

1/18 at Army Invitational

Sacred Heart Invitational

1/25 at Sacred Heart L 1-26

1/25 vs. Yeshiva W 16-11

1/25 vs. New Haven W 18-9

Stevens Invitational

2/1 at Stevens L 4-23

2/1 vs. Cornell L 5-22

2/1 vs. Army L 6-21

2/1 vs. Stony Brook W 14-13

2/8 ST. JOHN'S (MD) W 17-4

2/8 MARYLAND L 10-17

2/8 RUTGERS L 7-20

2/8 LAFAYETTE L 9-18

2/8 HUNTER L 11-16

2/8 DREW L 5-22

2/22 MACFA Conference Tournament

3/7 NCAA Regionals

Coach: Yefim Litvan



Max Miller

2009-2010 (9-10)

Drew Invitational

11/14 at Drew W 15-12

11/14 vs. Maryland W 23-4

11/14 vs. Lafayette W 17-10

11/14 vs. Stevens L 10-17

11/14 vs. Rutgers L 10-17

11/14 vs. St. John's (MD) W 23-3

12/4-6 North American Cup

1/9 at Penn L 7-20

Philadelphia Invitational (at UPenn)

1/9 vs. Sacred Heart L 6-21

1/9 vs. Duke L 5-22

1/9 vs. North Carolina L 6-21

West Point Invitational

1/23 Hunter W 21-6

1/23 at Army W 14-13

1/23 vs. Clemson L 13-14

2/7 vs. Stevens (at Princeton)L8-19

2/7 at Princeton L 2-25

2/13 MACFA Multi Meet A vs. C

2/21 HAVERFORD L 10-17

2/21 WILLIAM & MARY W 14-13

2/21 VIRGINIA W 21-6

2/21 VIRGINIA TECH W 18-9

2/28 MACFA Championships

Coach: Yefim Litvan

2010-2011 (3-1)

10/15-17	North American Cup		
11/7/13	Temple Open		
Drew Invitational			
11/21	vs. Maryland	W	18-9
1/21	vs. Hunter	W	18-9
11/21	vs. Rutgers	L	13-14
11/21	at Drew	W	15-12
1/22	Penn Invitational		
1/30	Stevens Invitational (C vs. A)		
2/13	MACFA (Round Robin)		
3/6	MACFA Championship (at William & Mary)		
3/12	NCAA Regional (at Drew)		

Coach: Yefim Litvan

2011-2012 (6-12)

11/20	ARMY	L	10-17
11/20	STEVENS	L	12-15
11/20	HUNTER	W	17-10
11/20	YESHIVA	W	20-7
12/2-12/4NAC Open			
UPenn Invitational			
1/22	vs. Drew	L	10-17
1/22	vs. Johns Hopkins	L	10-17
1/22	at UPenn	L	8-19
1/22	vs. Duke	L	2-25
1/22	vs. Sacred Heart	L	4-23
1/22	vs. North Carolina	W	14-13
Stevens Invitational			
1/29	vs. Maryland	W	15-12
1/29	vs. Johns Hopkins	L	5-22
1/29	vs. Virginia	W	16-11
1/29	vs. William & Mary	L	11-16
2/11	HAVERFORD	L	9-18
Drew Invitational			
2/12	vs. Lafayette	W	15-12
2/12	vs. Rutgers	L	12-15
2/12	vs. Cornell	L	10-17
3/4	MACFA Championships		

Coach: Yefim Litvan

2012-2013 (8-12)

11/12	North American Cup		
Haverford Invitational			
11/17	vs. Johns Hopkins	L	8-19
11/17	at Haverford	L	12-15
11/17	vs. William & Mary	W	17-10
11/17	vs. Maryland	W	15-12
11/17	vs. Virginia	W	18-9
Lafayette Invitational			
11/18	at Lafayette	W	14-13
11/18	vs. Drew	L	13-14
11/18	vs. Rutgers	W	16-11
11/18	vs. Cornell	W	14-13
11/30	at Columbia	L	10-17
11/30	vs. Stevens (at Columbia)	L	12-15

1/13 MACFA – B vs. C (at Stevens)

Temple Invitational			
1/26	vs. Duke	L	6-21
1/26	vs. Haverford	L	7-20
1/26	vs. North Carolina	L	7-20
1/26	vs. UPenn	L	6-21
1/26	vs. Sacred Heart	L	4-23
Stevens Invitational			
2/10	vs. Hunter	W	17-10
2/10	vs. Army	L	11-16
2/10	at Stevens	L	11-16
2/10	vs. Yeshiva	W	23-4
3/3	MACFA Championships (at Maryland)		
NCAA Regionals (at Lafayette)			

Coach: Yefim Litvan

2013-2014 (6-16)

11/8-20	North American Cup (D1 & Junior)		
Columbia Invitational			
11/22	vs. Stevens	L	7-10
11/22	vs. Princeton	L	3-24
11/22	at Columbia	L	3-24
MACFA B vs. C (at Johns Hopkins)			
11/24	vs. Virginia	W	19-8
11/24	vs. Maryland	W	17-10
11/24	vs. William & Mary	W	17-10
11/24	at Johns Hopkins	L	7-20
11/24	vs. Navy	L	13-14
1/11	Alumni Meet		
1/25	Penn Invitational		
2014 Eric Sollee Invitational			
at Brandeis University			
2/1	vs. Brown	L	11-16
2/1	vs. Stevens	L	9-18
2/1	at Brandeis	L	6-21
2/1	vs. Boston College	L	12-15
2/1	vs. Haverford	L	11-16
2/1	vs. MIT	L	7-20
MACFA B Round Robin (at Stevens)			
2/9	vs. Yeshiva	W	16-11
2/9	vs. Army	L	13-14
2/9	at Stevens	L	11-16
2/9	vs. Hunter	L	13-14

NJIT Invitational			
2/16	DREW	W	17-10
2/16	LAFAYETTE	L	11-16
2/16	RUTGERS	W	16-11
2/16	CORNELL	L	13-14
3/2	MACFA Championships (at Army)		
	5th out of 14 teams		
3/8	NCAA Regional Championships (at Lafayette)		
3/22-23	NCAA Division I Fencing Championships (at Ohio State)		

2013-14 National Ranking: 23rd

Coach: Yefim Litvan

2014-2015 (18-9)

11/1-2	Temple Open		
Columbia Invitational			
11/14	vs. Stevens	W	14-13
	#7 Columbia	L	9-18
	vs. Florida	W	14-13
Vassar Invitational			
1/18	vs. Sacred Heart	W	14-13
	vs. Yale	W	14-13
	vs. Cleveland State	W	25-2
	vs. Detroit Mercy	W	22-5
	at Vassar	L	11-16
Philadelphia Invitational			
1/25	vs. Lafayette	W	18-9
	at #8 Penn	L	7-20
	vs. Drew	W	22-5
	vs. #10 Duke	L	13-14
	vs. North Carolina	W	21-6
Eric Sollee Invitational			
1/31	vs. Brown	W	17-10
	vs. Hunter	W	23-4
	vs. Boston College	L	13-14
	vs. Brandeis	L	13-14
	vs. Yeshiva	W	22-5
MACFA B Round Robin			
2/8	at Stevens	L	11-16
	vs. Army	L	13-14
	vs. TCNJ	W	24-3
	vs. Hunter	W	22-5
	vs. Yeshiva	W	22-5
MACFA A vs. B			
2/15	vs. Cornell	L	13-14
	vs. Rutgers	W	23-4
	vs. Drew	W	25-2
	vs. Lafayette	W	21-6
2/22	MACFA B vs. C cancelled		
3/1	MACFA Championships (at Johns Hopkins)		
3/7	NCAA Regional Championships (at Duke)		
3/19-21	NCAA Fencing Championships (at Ohio State)		
2014-15 National Ranking: 14th			
Coach: Yefim Litvan			

Coach: Yefim Litvan

Men's All-Time Roster

(First season: 1935-36; complete thru 2014-2015)

A

ACOCCELLA, Norm 58
ALAI, John 54, 55
ALBANESE, Emil 49, 50, 51
ALDOVER, Christian 10, 11, 12, 13, 14
ALVARADO, Patrick 07, 08, 09
AMOS, Doug 53
AN, Peter 81
ANDERSON, Art 59, 60
ANDERSON, George 70, 71, 72, 73
ANDERSON, Greg 72, 73, 74
ANDREOLI, Aldo 55
APPLEBAUGH, Robert 53, 54

B

BALLISTER, Ronald 68, 69
BANTA, R. 42
BARCELONA, Vin 72, 73, 74, 75
BARENSIRCHER, K. 54
BARTH, Roland 58, 59, 60
BARTHA, Mike 70, 71, 75
BEATTIE, John 71, 72, 73, 74
BEBEE, D. 60, 61, 62
BEM, Ed 74, 75
BENAMY, Phil 78
BERG, Charles 55, 56
BESADA, Peter 09, 10, 11, 12
BIONDO, Greg 09, 10, 11, 12
BIRD, R. 50, 51
BLOOM, Phil 57, 58, 59, 60
BORNAKO, Greg 67, 68, 69, 70
BOSCHI, J. 59
BOWLES, Larry 55
BOWSER, Hamilton 49, 50, 51, 52
BOWSER, Robert 52, 54, 55, 57, 58
BRADFORD, Nevin 37, 40
BRILLANT, Phil 08, 09
BROWN, Art 68
BROWN, Steve 67
BROWN, William 68, 69, 70, 71
BRUMMER, Harry 53
BUELL, Jim 53, 54
BUNTIN, E. 54
BURTIS, Don 61, 62, 63, 64
BUTRYN, Kevin 15
BYRNE, Ed 62, 63, 64, 65

C

CAIRNS, Wally 53
CAPRIO, Michael 09

CARR, Dylan 10, 11, 12, 13
CHIN, Gilbert 82
CICAK, Peter 63, 64, 65
CILLI, Lenny 73, 74, 75, 76, 77
CLUNE, Patrick 92
COLUCCI, Steve 79, 80, 81, 82
CONSTANTIN, Ian 13, 14, 15
CONTRETAS, Andy 06
CORBO, Nick 61
CRAIG, Hugh 46
CRESPO, Jose 79
CRIMMINS, Dave 49, 50, 51, 52
CRITTENDEN, Richard 51
CURTIS, Ronald 68, 69

D

D'ADDARIO, R. 50, 51
D'ARMIENTO, Ben 46, 47, 48, 49
D'EMIDIO, Vinnie 70, 71, 72, 73
DANIEL, Justin 10
DAVIS, Michael 08
DAVIS, William 76, 77, 78
DAVISON, George 52, 53, 54
DAY, Jeff 92
DECKER, Don 66
DEGEORGES, Cole 15

DEGUIA, Paolo 07
DEMBECKS, Andrew 60, 61, 62, 63
DENCH, John 46
DENNEY, William 68, 69
DENNING, Tony 39, 40
DEROSA, James 07
DEVALVE, Dan 08
DEVENJO, Matthew 09, 10, 11, 12
DEVITO, Enzo 66, 67
DEVITO, Louis 57, 58, 59, 60
DISHUK, Gary 07, 08
DOLID, Paul 49
DORNBUSH, Bernie 61, 62
DOUGHERTY, Warren 66, 67, 68, 69
DOW, Robert 68
DOWNEY, Matt 14
DRABINIS, Al 62, 63, 64
DUNCAN, Jeff 60, 61, 62
DURBAK, Demetro 57, 58, 59, 60

E

ELGRAM, Roger 64, 65
ERDREICH, John 62, 63, 64, 65
EZCURRA, Eduardo 15

F

FECHER, George 55, 56
FENNAR, Miya 80, 81
FERNANDEZ, Dennis 68, 69
FORMAN, Shemley 07
FOSTER, John 38
FRANK, George 69, 70
FREE, Joe 56, 57
FUCHS, Brian 80, 81, 82

G

GARABRANT, Gary 62, 63, 64
GARDNER, John 69, 70, 71
GARRETSON, Craig 92
GAVRUN, Andrew 15
GERACI, A. John 39, 40, 41, 42
GERBER, Lawrence M. 46
GILBERT, S. 60
GIORDANO, Lou 59, 60
GLATT, Marvin 64
GLUHIC, Gal 15
GO, Lennart 07
GOVEL, Edward 46, 47
GRABER, William 06
GREEN, Harry 58



Gal Gluhic

GROSS, Bernard 47
GULINO, Frank 82
GUSTIFSON, Paul 61

H

HAASE, Jay 72, 73, 74, 75
HAASE, John 69, 70, 71, 72
HALLAS, Pete 70
HAMFELDT, Michael 09, 10, 11, 12
HAMILTON, William 37, 40
HARGIS, James, I. 47
HARRISON, Bill 38, 39, 40, 41
HARWOOD, Robert 62, 63
HASCUP, Bruce 68, 69, 70, 71
HATCHMAN, Harry 47
HATKE, David 10, 11, 12
HAUER, Gabe 71, 72, 73
HAY, Oscar 74, 75, 76
HE, Edward 11, 12, 13, 14
HEISLER, Ron 81
HELLMAR, R. 50
HELLSTROM, Edward C. 46
HERRERA, Fabian 92
HIGGINS, William 68
HILL, Alex 15
HOFFMAN, George 60, 61, 62, 63
HOWES, Richard P. 46
HRAPSKY, Ryan 14, 15
HUNTER, Aaron 92
HURLEY, John 75, 76
HVIZDAK, Zachary 08, 09, 10, 11

I

ILG, Carl 57
IPPOLITO, Mark 66
ISCHER, Valentin 10
IVASKA, Tony 53

J

JACOBS, Joe 66, 67
JAKOSITZ, Jack 55
JANIEC, Kris 07
JAREA, J. 59
JAREZ, J.
JAVIER, Joe 92
JEAN, Gerard "Jerry" 62, 63, 64, 65
JENSEN, Chris 37, 38, 40
JONES, Roger 36, 37
JONKER, Dan 47
JUINTA, Tom 52, 53, 54
JUREWICZ, Mike 14, 15

K

KARAMANOL, Stan 64, 65, 66
KEESSEE, Don 56, 57, 58
KELLERS, Al 60, 61
KILLY, Bruce 64, 65, 66, 67
KIRK, Andrew 08, 09, 10, 11
KISS, John 81, 82
KLAPHOLZ, Dave 76
KLAPPHOLZ, Leon 47, 48, 49
KLAUSNER, Sheldon 46
KONCHALSKI, Michael 06
KONG, David 14, 15
KORRY, Henry 68, 69, 70
KOSVIC, Tom 60, 61, 62, 63
KRAM, William 52, 53, 54
KRONSEDER, John 37, 38, 39, 40
KUM, Steven 07
KURZEJA, Stan 51, 52, 53, 54

L

LA RUE, Charles 56
LAGANELLA, Larry 51, 53
LANDELLS, James 64
LANTERI, Guillaume 12, 13
LARUSSO, Tom 59, 60, 61, 62, 63
LAWLESS, William 58
LAWRENCE, Devis 74, 75
LAYENDECKER, Richard 68, 69, 70, 71
LENK, Paul 52, 53, 54
LERNER, Richard 64
LEVIN, Harvey 64, 65, 66
LEVY, Harvey 46
LOGANELLA 52
LOPES, Robert 76, 77
LORENZ, Paul 07, 08, 09
LUBAS, Mike 80
LUCK, Felex E. 46
LUTKENHOUSE, Nick 10
LYNCH, Robert 77, 78, 79, 80

M

MAHON, D. 59, 60
MALETTA, Tony 46
MALLON, Harry 37, 40
MARKOSIAN, Varooshn 37, 38, 39, 40
MARQUES, Henrique 15
MARREN, Rich 76
MARSH, Gary 70, 71, 72, 73
MARTINEZ, George 67, 68, 69, 70
MATE 49



*Simon Rizell, 2015 NCAA National
Championship Participant*

MATONTI, Gus 35
MCCLAUD, Glen 74
MCDERMOTT, Max 10, 11, 12, 13
MCDONALD, John 67
MEDDLES, Ed 68
MEEHAN, Steve 81, 82
MENDEZ, Andrew 15
MENDOZA, Pedro 75, 76, 77
MENJIVAR, Mario 06
MENKES, Bernie 47
MESSINA, Peter 69, 70, 71, 72
MESSING, Louis R. 46
MICHEL, John 78, 79, 80
MICHEL, Ron 55, 57, 58
MILLER, Maxwell 14, 15
MISHRA, Shivank 14, 15
MITCHELL, William 60, 61, 62, 63
MOISEENKO, Oleg 64, 65, 66, 67
MORSE, Mike 67, 68, 69
MOREHOUSE, Don 53
MOY, Ken 72, 73, 75, 76
MUI, SK 73, 74
MULSHINE, Tom 62

Men's All-Time Roster

(First season: 1935-36; complete thru 2014-2015)

N

NAPOLITANO, Pat 56, 57
NARCAVAGE, George 63
NELSON, Mike 63, 64, 65, 66
NICHOLLS, Ronald 55, 56, 57
NICOLAY, Edward P. 46
NICOLAY, Herbert A. 46
NIZNAN, Neil 77
NOCTOR, Jim 77
NORDFORS, Edgar 46, 47
NORDMAN, Eberhardt 54, 55, 56, 57
NORDMAN, Otto 54, 55, 56, 57
NUCCI, L. 40, 42

O

O'BRIEN, Chuck 81, 82
O'BRIEN, Ed 79, 80
O'REILLY, Robert 78, 79
OLIVER, Eric 09

P

PANCOAST, Andrew 06
PANG, Ronald 77, 78, 80, 81
PARR, Ben 55, 56
PARSONS 51
PATTEN, Tom 76, 77, 78, 79
PERRY, Alan 56, 57, 58, 59, 60
PERSHAD, Ian 12, 13, 14
PETROSKY, Walter 39, 40, 41
PICCININNO, Lou 58
PINTERICH, Steve 65, 66
PITT, Walter 37, 40
POLIS, Dan 53, 54, 55
POLIZZI, Emanuel 64, 65, 66, 67
POTOCZNICK, George 63, 64, 65, 66, 67
POTOCZNIK, Joe 66, 67
PRICE, Don 56
PRINCE, Elio 55, 57
PRUESSE, Carl 56, 57, 58, 59
PURCELL, Vinnie 49, 50, 51

R

RAMJATTAN, Amrit 08, 09
RANSINANGUE, Bryan 11, 12, 13, 14
RENNER, Jack 38, 39, 40
RENNER, R. 37, 40
RENVER, John 37, 38
REYNOLDS, Thomas 06
RIZELL, Simon 15
RODRIGUES, David 06
RODRIGUEZ, Dan 82

ROSENFELD, Rudy 64, 65, 66, 67
ROSENZWEIG, Robert 64, 65, 66
ROSSI, Tony 74
ROTOLLO, Victor 49, 50
RUOFF, Jeff 66

S

SADOWSKI, Alex 13, 14
SAHAFAIE, Mohammad 92
SANCHEZ, Rufo 40, 42
SAYRE, William 38, 39
SCALRGA, Frank 47
SCHAEFER, Walt 56, 57
SCHENCK, Elwood 37, 40
SCHNEIDER, Jerry 62, 63
SCHULMAN, I. 59
SELLS, Tyler 08, 09
SHEEHY, George 71
SHEN, Ray 79, 80
SIMKINS 69
SINNOT, Dan 53
SKIDMORE, Ritchie 42
SKUCAS, John 55, 56, 57, 58
SLAWSINSKI, Robert 15
SLIZZA, Dick 56, 57, 58
SMITH, Jim 66
SORGI, Tony 09, 10, 11, 12
SORIANO, Greg 69, 70, 71, 72
SPENGLER, Keith 06
SPICER, Ron 61
SPIESBACH, Gerry 72, 73, 74, 75, 76
SPINA, John 62, 63, 64, 66, 67
STAVINSKI, D. 54
STEMMER, Jay 58
STILLWAGGON, Jack 38, 39, 40, 41
STUMPFL, Ed 56
SULLIVAN, Jim 50, 51, 52, 53
SZELUGA, Robert 77, 78, 79

T

TAESTZCHE, Bill 49, 50, 51, 52
TAESTZCHE, Bob 49, 50, 51, 52
TANI, Rob 06, 07, 08
TENGWELL, Ed 81
TERNINKO, Jack 59, 60, 61
TESLENKO, Lenny 66, 67, 68
TINKHAM, Robert 64, 65
TOBANKIN, Harry 50, 51, 52, 53
TOGONON, Alvin 06, 07
TOGONON, Carlo 06, 07
TRUONG, Andrew 13, 14

U

UNGARDO, Tony 70
UNGER, Bill 75
URBANNECK, George 67, 68

V

VACHINO, Ray 52, 53
VALENTE, Nick 69, 70
VAN DENBURGH, Leland 37, 38, 40
VANARELLI, J. 47
VANDERSCHANS, P. 47
VANSPLINTER, Peter 59, 60
VASELLI, John 69, 70, 71, 72
VASQUES, Javier 07, 08
VAVARI, Bashir 80
VELESE, Jose 66, 67, 68
VERMIGGIN, Tony 72
VOGEL, Robert 62, 64, 65

W

WARSHAW, Herman E. 46
WEATE, Mike 82
WEINREB, Marius 54, 55, 56
WELTMER, George 62
WESSNER, 76, 77, 78
WESTON, Greg 92
WHALEN, Mike 82
WIEGLEB, Ernest 46
WILL, Tom 67
WISE, L. 59
WOLFE, Tom 80, 81
WOLFENDEN, Dan 12, 13
WOLFSON, Steve 92
WYCKOFF, Norman 34
WYROUGH, W. 42
WYSZKOWSKI, Edward P. 46, 47

Y

YOUNG, Rolan 92
YUSEM, Quinn 10

Z

ZIEMSKI, Gary 77
ZIVARI, Bashir 80

*Records are incomplete. Please e-mail
pillari@njit.edu with any additions or
corrections.*

Robert Slawinski

Women's Year-by-Year

2005-06 (0-7)			
11/13	at Sacred Heart	L	9-18
11/20	at Stevens Tech	L	3-24
11/20	vs. Yeshiva (at Stevens Tech)	L	9-18
11/20	vs. Hunter (at Stevens Tech)		
11/20	vs. Johns Hopkins (at Stevens Tech)		
1/21	vs. Drew (at Baltimore, MD)	L	1-26
1/21	vs. Cornell (at Baltimore, MD)	L	1-26
1/21	vs. Penn (at Baltimore, MD)	L	0-27
1/21	vs. Northwestern (at Baltimore, MD)	L	0-27

2/5	vs. Fairleigh Dickinson (at Philadelphia)		
2/5	vs. James Madison (at Philadelphia)		
2/5	vs. Stevens Tech (at Philadelphia)		
2/5	vs. Hunter (at Philadelphia)		
2/10	at Drew		
2/11	DREW		
2/19	HAVERFORD		
2/19	LAFAYETTE		
2/19	DREW		
2/19	ARMY		
2/19	CORNELL		

Coach: Mac Shaker
 **Schedule Incomplete

2006-07 (0-10)			
12/3			
1/21	vs. Fairleigh Dickinson (at West Point)	L	1-26
		L	3-24
1/21	at Army	L	3-24
1/21	vs. Hunter (at West Point)	L	3-24
2/4	vs. Fairleigh Dickinson (at Philadelphia, PA)	L	3-24
2/4	vs. Johns Hopkins (at Philadelphia, PA)	L	1-26
2/4	vs. Army (at Philadelphia, PA)	L	2-25
2/4	vs. Stevens Tech (at Philadelphia, PA)	L	2-25
2/10	at Drew	L	2-25
2/10	vs. Temple (at Drew)	L	2-25
2/10	vs. Fairleigh Dickinson (at Drew)	L	2-25
3/3	(at Smith College)		

Coach: Janusz Mlynek
 **Schedule Incomplete

2007-08 (0-1)			
12/2	(at Jersey City, NJ)		
12/9	vs. Yeshiva (at Sacred Heart)	L	0-9
12/9	at Sacred Heart		
1/20	vs. Stevens Tech (at Army)		
1/27	at Johns Hopkins		
2/23	(at Hunter)		

Coach: Yefim Litvan
 **Schedule Incomplete

2008-09 (0-3-1)

12/4	QUEENS	T	9-9
12/7	NIWFA Christmas Tournament (at Jersey City, NJ)		
1/18	at Army Invitational		
1/25	at Sacred Heart	L	2-25
1/25	vs. New Haven (at Fairfield, CT)	L	4-23
1/25	vs. Yeshiva (at Fairfield, CT)	L	8-19
3/7	NCAA Regionals		
3/8	NCAA Regionals		
3/19	NCAA Finals		

Coach: Yefim Litvan

2009-10 (1-16)			
11/14	at Drew	L	12-15
11/14	vs. Maryland (at Drew)	W	13-9
11/14	vs. Rutgers (at Drew)	L	5-11
12/1	QUEENS	L	11-16
12/6	NIWFA Christmas Tournament		
1/9	vs. Drew (at Penn)	L	13-14
1/9-10	vs. Sacred Heart (at Penn)	L	5-22
1/9	vs. Fairleigh Dickinson (at Penn)	L	10-17
1/9	vs. North Carolina vs Penn	L	4-23
1/23	vs. Clemson (at Army)	L	7-14
1/23	at Army	L	10-17
1/23	vs. Hunter (at Army)	L	8-19
1/23	vs. CCNY (at Army)	L	8-17
1/23	vs. Stevens Tech (at Army)	L	6-21
2/7	vs. Fairleigh Dickinson (at Princeton)	L	9-18

2/7 vs. Stevens Tech (at Princeton) L 6-21
 2/7 at Princeton L 1-26
 3/6 NIWFA Championships
 3/13 NCAA Regionals
 Coach: Yefim Litvan
 **Schedule Incomplete

2010-11 (2-1)			
10/15-17	North American Cup		
11/21	vs. Maryland (at Drew Invitational)	W	16-11
11/21	vs. Drew (at Drew Invitational)	W	15-12
11/21	vs. Rutgers (at Drew Invitational)	L	7-17
12/2	QUEENS	cancelled	
12/5	NIWFA Christmas Invitational (at Cobra Fencing Club)		
1/22-23	Philadelphia Invitational (at Temple)		
2/13	Stevens Invitational		
3/12	NCAA Regionals		

Coach: Yefim Litvan

2011-12 (3-6)			
11/20	FAIRLEIGH DICKINSON	W	14-13
11/20	HUNTER	W	20-7
12/4	NIWFA Christmas Invitational (at Cobra Fencing Club)		

1/21	vs. Drew (at UPenn)	W	17-10
1/21	vs. Duke (at UPenn)	L	4-23
1/21	vs. Cornell (at UPenn)	L	3-24
1/21	vs. Northwestern (at UPenn)	L	4-23
1/21	at Penn	L	6-21
2/11	HAVERFORD		
2/12	vs. Lafayette (at Drew)	L	12-15
2/12	vs. Rutgers (at Drew)	L	13-14
3/3	NIFWA Championships		
3/10	NCAA Regional (at Lafayette)		

Coach: Yefim Litvan

2012-13 (6-10)			
11/9-12	North American Cup		
Haverford	Invitational (at Haverford)		
11/17	at Haverford	L	8-19
11/17	vs. Johns Hopkins	L	5-22
11/17	vs. Maryland	W	15-12
11/17	vs. William & Mary	W	14-13
11/17	vs. Virginia	L	13-14
Lafayette	Invitational (at Lafayette)		
11/18	at Lafayette	W	14-13
11/18	vs. Yeshiva	W	16-11
11/18	vs. Drew	L	11-16
11/18	vs. Rutgers	L	9-18
Columbia	Invitational (at Columbia)		
11/30	at Columbia	L	2-25
11/30	vs. Tufts	W	15-12
12/2	NIFWA Christmas Invitational		
Penn	Invitational (at Temple)		
1/26	vs. Haverford	L	8-19
1/26	vs. Johns Hopkins	L	6-21
1/26	vs. North Carolina	L	8-19
1/26	vs. Duke	L	5-22
2/9	NJIT Invitational		
2/15	at The City College of New York	W	14-13
3/2	NIWFA Championships (at Swarthmore)		
3/9	NCAA Regional (at Lafayette)		

Coach: Yefim Litvan

2013-14 (5-14)			
11/8-11	North American Cup (D1 & Junior)		
Columbia	Invitational (at Columbia)		
11/22	at Columbia	L	3-24
11/22	vs. Princeton	L	0-27
John Hopkins	Invitational (at Johns Hopkins)		
11/24	at Johns Hopkins	L	6-21
11/24	vs. Army	W	15-12
11/24	vs. Yeshiva	W	25-2
11/24	vs. Virginia	W	16-11
11/24	vs. Navy	L	13-14
12/8	NIWFA Christmas Invitational (at Rutgers)		

Women's Year-by-Year Results

1/11	Alumnae Day		
1/26	Philadelphia Invitational (at Penn)		
2014 Eric Sollee Invitational (at Brandis University)			
2/1	at Brandis	L	5-22
2/1	vs. Boston College	L	5-22
2/1	vs. Brown	L	3-24
2/1	vs. Haverford	L	7-20
2/1	vs. MIT	L	7-20
2/1	vs. Stevens	L	7-20

NJIT Invitational

2/16	QUEENS	W	22-5
2/16	FAIRLEIGH DICKINSON	L	8-19
2/16	LAFAYETTE	L	13-14
2/16	RUTGERS	L	11-16
2/16	ARMY	W	17-10
2/20	FAIRLEIGH DICKINSON	L	12-15
3/1	NIWFA Championships (at Army)		
3/8	NCAA Regional Championships (at Lafayette)		

Coach: Yefim Litvan

2014-15 (5-19)

11/1-2	Temple Open		
Columbia Invitational			
11/14	vs. Fairleigh Dickinson	L	7-20
	at Columbia	L	3-24
	vs. Florida	L	13-14

Vassar Invitational

1/18	vs. Sacred Heart	L	4-23
	vs. Yale	L	6-21
	vs. Cleveland State	W	14-13
	vs. Detroit Mercy	L	10-17
	at Vassar	L	10-17
	vs. Tufts	L	6-21

Philadelphia Invitational

1/25	vs. Haverford	W	14-13
	vs. Cornell	L	3-24
	vs. Fairleigh Dickinson	L	12-15
	vs. Drew	W	15-12
	vs. North Carolina	L	6-21

Eric Sollee Invitational

1/31	vs. Brown	L	8-19
	vs. Hunter	W	14-13
	vs. Boston College	L	7-20
	vs. Brandeis	L	8-19
	vs. Yeshiva	W	18-9

FDU Invitational

2/8	at Fairleigh Dickinson	L	8-19
	vs. Temple	L	0-27
	vs. Brandeis	L	3-24
	vs. Johns Hopkins	L	12-15
	vs. Stevens	L	10-17

3/7 NCAA Regional Championships (at Duke)

3/19-21 NCAA Fencing Championships (at Ohio State)

Coach: Yefim Litvan

Women's All-Time Roster

A

ALADE, Opeyemi 12, 13, 14
 AMAECHI, Felicia 05, 06, 07
 ANZAR, Ana 91
ARONOV, Julia 12, 13, 14, 15

B

BAILEY, Linda 02
 BANDEIRA, Carla 97, 98, 99
BAZILE, Abigail 13, 14, 15
 BOCHNIEWICZ, Elaine 01
 BOJARSKI, Judy

C

CAMARGO, Andrea 10, 11, 13, 14
 CHOU, Ashley 04
 CHRISTIAN, Margaret 13, 14
 CILENTO, Karen 10, 11
 CONNERAN, Maria 10, 11
 COOPER, Crystal 01, 04

D

DANG, Jiaxi 14
 DEATS, Jennifer 92, 93
DONG, Grace 14, 15
 DUFFY, Ellen 90, 91
 DUPUIS, Lauren 12

E

EDWARDS, Sherry 09, 10
 ERICKSON, Chris 05

F

FAGUNDO, Nicole 07, 08
 FENNAR, Miya

G

GAMEL, Kaelyn 15
GARCIA, Julia 15
 GRAHAM, Jalia 10, 11, 12, 13
 GUNNARSON, Breanna 12

H

HAGEN, Kristen 10, 11
 HARPULA, Jennifer 94, 95, 96
 HAWN, Vivian 14
 HIGGINS, Teresa 07
 HO, Jessica 04, 05
 HUAN, Hannah 12, 13, 14
 HUGHES, Jessica 05, 07

J

JEVTIC, Katarina 15
JOHNSON, Nia 15
 JORGE, Vanessa 08, 09, 10

K

KAIRU, Nyakiyo 05, 06
 KUNZ, Karen 93

L

LEPELLETIER, Allison 01, 02
LIGO, Jennifer 12, 13, 14, 15

M

MALDONADO, Laurabeth 09, 10
 MALDONADO, Macarena 09, 10, 11, 12
 MARSHALL, Mia 13, 14
 MCCARTNEY, Alexa 07
 MCGOWAN, Kelsey 11
 MCLEACH, Darlene
MOON, Mehnaz 15
 MUDALIAR, Yashil 12
 MUHAMMAD, Faizah 11

N

NELSON, Marissa 14

O

OHUABUNWA, Barbara 06
 OLSZTYN, Jennifer 05, 06, 07

P

PAULTER, Michelle 04, 05
 PHATAK, Uma 02, 04, 05
 POTESTIO, Michelle 13, 14, 15

R

RAMJATTAN, Crystal 12
 RAMOS, Jennifer 09, 10, 11, 12
 REZA, Jabeen 04
RICHMOND, Rebecca 13, 14, 15
 RIVERA, Maritza 91
RODRIGUES, Alessandra 15
 ROMERO, Ana 91
 ROSE, Carol
 RUSSO, Christina 04
 RUSTOM, Layyal 10

S

SANJAI, Deepti 04, 05
 SHAH, Shivani 11
SHIGHARA, Jule 15
SHIPMAN, Vera 15
 SILVA, Jennifer 11, 12, 13, 14
 SOBERS, Sophia 09, 10

T

TOSCANO, Sharon 98

V

VENERACION, Sheryl 97, 98, 99
 VOTA, Amanda 07

*Records are incomplete. Please e-mail
 pillari@njit.edu with any additions or
 corrections.*

Michelle Potestio

NJIT Hall of Fame

Name	Grad. Year	Contribution	Sport (s)	Years Active	Year of Induction	Name	Grad. Year	Contribution	Sport (s)	Years Active	Year of Induction
BAKUN, Andrew I.	1982	Athlete/Asst. Coach	M-Soccer	1978-81/ 90-91	2005	IRIS, Herb	1951	Benefactor	--	--	2007
BAKUN, Myron	1967	Athlete	M-Soccer	1964-66	1991	KAMINSKY, Nicholas J.	1978	Athlete	Baseball	1975-78	2006
BARTH, Roland E.	1960	Athlete	M-Fencing	1957-59	2009	KASBARIAN, Raymond P.	1966	Founder/Athlete	Judo	1962-66	1989
			M-Soccer	1956-59		KETZNER, Robert Shelby	--	Coach	Rifle	1962-86	1987
BAUDER, Fred "Coach"	--	Coach	M-Basketball	1932-61	1989	KHOWAYLO, Alex	1969	Athlete	M-Soccer	1960-63	1996
BLUM, Raymond E.	1950	Distinguished Alumnus	Speedskating/ Cycling	--	1996	LUBETKIN, Charles "Tudy"	1953	Athlete	M-Basketball/ M-Track	1949-52	1994
BORJA, Hernan "Chico"	1981	Athlete	M-Soccer	1977-80	1986	LYNCH, Robert K.	1984	Athlete/Coach	M-Fencing	1977-80/ 86-91	1993
BORNAKO, Gregory "Egor"	1970	Athlete	M-Fencing	1966-70	1987	MacDONALD, Dan	1984	Athlete	Baseball	1981-84	1992
BOWSER, Hamilton V.	1952	Athlete	M-Fencing	1948-52	1989	OLSEN, Richard J.	1969	Athlete	M-Basketball	1965-69	1988
BRADLEY, Thomas	1978	Athlete	M-Swimming	1974-78	1990	OLSON, George R.	1977	Athlete	Baseball	1974-77	1987
BROWN, Andrew D.	1963	Athlete	M-Soccer	1956-59	2006	PAULIUS, Raymond V.	1985	Athlete	M-Soccer	1980-83	2006
CRIMMINS, David	1952	Athlete	M-Fencing	1948-52	2007	RODGERS, Tarik	1996	Athlete	M-Volleyball	1992-95	2010
CRUZ, Edward	1963	Athlete	M-Soccer	1959-62	1995	ROGERS, Warren	1988	Athlete	M-Basketball	1983-87	1993
DAWSON, Marilyn E.	1986	Athlete	WVB/WBKB/SB	1982-86	1991	ROMULUS, Rudy	1991	Athlete	M-Volleyball	1988-91	1996
DeNICOLA, Carmine P.	1978	Athlete	Baseball	1975-78	2005	ROSS, Jonathan A.	1956	Athlete	M-Soccer	1953-55	2010
DeNURE, Dave	--	Coach	M-Volleyball	1982-98	2009	SARLO, Paul A.	1992	Athlete	Baseball	1989-91	2005
			W-Volleyball	1986-90		SCHMID, John "Gene"	--	Asst Coach/Coach	Baseball	1968-72/ 73-97	2002
			W-Basketball	1987-88		SIMON, J. Malcolm	--	Coach	M-Soccer	1955-83	1994
DeVITO, Louis	1960	Athlete	M-Soccer/ M-Fencing	1956-60	1992			Director of Athletics	--	1983-94	
DIAS, Joe A.	1977	Athlete	M-Soccer	1973-76	1993	SKURLA, Peter J.	1941	Athlete	Bowling	1937-41	1992
DRURY, Eugene M.	1963	Athlete	M-Tennis	1960-63	1988	SORIANO, Gregory	1975	Athlete	M-Fencing	1968-72	2010
ENG, Katherine	1993	Athlete	W-Volleyball	1989-92	2007	SWANSON, Robert F.	--	Director of Athletics	--	1947-82	1986
ETIENNE, Yves	1979	Athlete	M-Volleyball	1976-78	1990	TAETZSCH, Robert	1952	Athlete	M-Fencing	1948-52	2007
FEHN, Gilbert F.	1940	Athlete	M-Basketball/ M-Tennis	1936-40	1992	TAETZSCH, William	1952	Athlete	M-Fencing	1948-52	2007
						TOSATO, Lawrence P.	1956	Athlete	M-Basketball/ Baseball	1952-56	1987
FITZGERALD, Joseph M.	--	Coach/Asst. Coach	M-Basketball	1961-66/ 52-61	1986	TUBELLO, Jeffrey	1976	Athlete	Rifle	1972-76	1988
FLEISHER, Seymour "Zoom"	1951	Athlete	M-Basketball	1947-51	1992	VAN WRIGHT, Nevea	1997	Athlete	W-Basketball	1991-96	2005
GAGLIARDO, Salvatore A.	1985	Athlete	M-Basketball	1981-85	1995	WALSH, John J.	1966	Athlete	MSoc/MBKB/ Baseball	1962-66	1986
GALLAGHER, Thomas G.	1985	Athlete	M-Basketball	1981-85	1991	WASNIEWSKI, Frank	1980	Athlete	M-Tennis	1977-80	1990
GIOVANNOLI, Arnold L.	1953	Athlete	M-Basketball	1950-53	1993	WELGOS, Bob	1962	Athlete	M-Basketball/ Bowling	1959-62	2005
GOLDRICK PITT, Elizabeth M.	1990	Athlete	W-Volleyball/ Softball/WBKB/WTen	1985-90	1995	WOROBEC, Myron S.	1966	Athlete	M-Soccer	1962-65	1994
GRAZIANO, Jean M.	1989	Athlete	Softball	1986-89	2009	YONEZUKA, Yoshishada	--	Founder/Coach	Judo	1962-?	1991
GRUENEWALD, Wendy A.	1997	Athlete	WBKB/Softball/ W-Volleyball/W-Soccer	1992-96	2003	ZORN, Werner	1962	Athlete	M-Soccer	1958-61	1988
HAASE, Jay W.	1975	Athlete	M-Fencing	1971-75	1988						
HAMMOND, Kenneth W.	1979	Athlete	M-Soccer	1974-77	2003						
HANDWERKER, Andy	1963	Athlete	M-Soccer	1959-62	2002						
HAUSSER, Paul C.	--	Administrator	--	1953-91	1990						
		Coach	Fencing/Baseball	1954-88/53-72							
HUBEY, Ali	1972	Athlete	M-Soccer	1968-71	1990						
HURTADO, Fabian	1975	Athlete	M-Soccer	1970-74	1987						

Teams	Year	Accomplishments	Year of Induction
Men's Soccer	1960	NAIA co-National Champion	1988
Men's Basketball	1981-82	NJIT's first ECAC and IAC champion	1990
Baseball	1982	NJIT's second ECAC and IAC champion	1993

Directions

FOR GPS USERS

The address for Lubetkin Field at Mal Simon Stadium, the Estelle and Zoom Fleisher Athletic Center, and the Naimoli Family Athletic and Recreational Facility is 80 Lock Street, Newark, NJ, 07102.

BY CAR

New Jersey Turnpike: Driving North from South Jersey: Take NJ Turnpike to Exit 13A Newark Airport. After toll stay to left and follow signs to Rt. 1 & 9 North. You will merge onto Rt. 1 & 9 North. Airport will be on right. Follow signs for downtown Newark and Rt. 21 North-(left lane exit ramp). Downtown Newark will be in front of you. NYC will be off to your right. Follow Rt. 21North (McCarter Highway). Turn left on Raymond Blvd. Follow Raymond Blvd. past Warren Street traffic light and Fleisher Athletic Center, Naimoli Center, and Lubetkin Field at Mal Simon Stadium will be to your right (one soccer goal line runs along Warren Street and the soccer sideline parallels Lock Street).

New Jersey Turnpike: Driving South from North Jersey: Take exit 15W to Route 280 West, then follow Route 280 West directions.

Route 280 West: After drawbridge, take Exit 15A (Rt. 21 South - McCarter Highway). Follow Rt. 21 South to Raymond Blvd. Turn right on Raymond Blvd. Follow Raymond Blvd. pass Warren Street traffic light and Fleisher Athletic Center, Naimoli Center, and Lubetkin Field at Mal Simon Stadium will be to your right (one soccer goal line runs along Warren Street and the soccer sideline parallels Lock Street).

Route 280 East: Take Exit 15 (Rt. 21 South - McCarter Highway). Follow Rt. 21 South to Raymond Blvd. Turn right on Raymond Blvd. Follow Raymond Blvd. past Warren Street traffic light and Fleisher Athletic Center, Naimoli Center, and Lubetkin Field at Mal Simon Stadium will be to your right (one soccer goal line runs along Warren Street and the soccer sideline parallels Lock Street).

Garden State Parkway (North & South bound): Take exit 145 to Route 280 East, then follow Route 280 East directions.

Route 1 & 9 North & South: Take exit marked Newark, Rt. 21 North (McCarter Highway). Follow Rt. 21 North (McCarter Highway). Turn left on Raymond Blvd. Follow Raymond Blvd. past Warren Street traffic light and Fleisher Athletic Center, Naimoli Center, and Lubetkin Field at Mal Simon Stadium will be to your right (one soccer goal line runs along Warren Street and the soccer sideline parallels Lock Street).

Route 78 East: Take Route 78 East to Rt. 21 North. Turn left on Raymond Blvd. Follow Raymond Blvd. past Warren Street traffic light and Fleisher Athletic Center, Naimoli Center, and Lubetkin Field at Mal Simon Stadium will be to your right (one soccer goal line runs along Warren Street and the soccer sideline parallels Lock Street).

Route 22 East: Take Route 22 East to Route 21 North. Turn left on Raymond Blvd. Follow Raymond Blvd. past Warren Street traffic light and Fleisher Athletic Center, Naimoli Center, and Lubetkin Field at Mal Simon Stadium will be to your right (one soccer goal line runs along Warren Street and the soccer sideline parallels Lock Street).



Route 21 North: Follow Rt. 21 North to Raymond Blvd. Turn left onto Raymond Blvd. Follow Raymond Blvd. past Warren Street traffic light and Fleisher Athletic Center, Naimoli Center, and Lubetkin Field at Mal Simon Stadium will be to your right (one soccer goal line runs along Warren Street and the soccer sideline parallels Lock Street).

Route 21 South: Follow Rt. 21 South (McCarter Highway) to Raymond Blvd. Turn Right on Raymond Blvd. Follow Raymond Blvd. past Warren Street traffic light and Fleisher Athletic Center, Naimoli Center, and Lubetkin Field at Mal Simon Stadium will be to your right (one soccer goal line runs along Warren Street and the soccer sideline parallels Lock Street).

New York Thruway: Thruway to Exit 14A, Garden State Parkway. Follow Garden State Parkway directions above.

George Washington Bridge: NJ Turnpike South to Exit 15W. Follow Route 280 West directions above.

Lincoln Tunnel: West on Rt. 3 to Rt. 21 South. Turn right onto Raymond Blvd. Follow Raymond Blvd. past Warren Street traffic light and Fleisher Athletic Center, Naimoli Center, and Lubetkin Field at Mal Simon Stadium will be to your right (one soccer goal line runs along Warren Street and the soccer sideline parallels Lock Street).

From Brooklyn, Queens and Long Island: Take Verrazano-Narrows Bridge (Interstate 278) and follow 278 across Staten Island. Cross Goethels Bridge. Follow signs to New Jersey Turnpike North then follow New Jersey Turnpike directions above.

PARKING

Bus/Van Parking: Visiting buses and vans may usually park on Lock Street adjacent to the athletic center. Please be careful not to block the parking space reserved for the doctor.

Visitor Parking: Visitor parking may be reserved in advance through your host. Otherwise, visitor parking at NJIT is available in the NJIT parking deck. Turn right onto Warren Street. Turn right onto Colden Street and proceed around the block to Summit Street. Parking Deck entrance is located to your right before the intersection with Warren Street.

Parking for on-campus athletic contests: NJIT is offering free off-street parking for fans attending regular season home soccer and volleyball matches and basketball games. The parking entrance, marked by a yellow sign is located on New Street.

OTHER TRANSPORTATION SYSTEMS

Newark Liberty International Airport: Minutes from the NJIT campus. A minibus (Newark Airlink) or taxi service connects the airport with Penn Station in Newark. Bus, Newark Light Rail, and taxi connections are available at the station.

Newark Penn Station: Located in downtown Newark, connections to the NJIT campus may be made by bus, Newark Light Rail, or taxi.

Morris & Essex Broad Street Station: A five-block walk to the NJIT campus via MLK Boulevard to Central Avenue. Taxi service is also available.

Newark Light Rail: From Penn Station in Newark, take the Warren Street stop for the NJIT campus. The Warren Street stop is on the sidewalk behind the press box for Lubetkin Field at J. Macolm Simon Stadium.

HOTELS DOWNTOWN

Hilton Newark Gateway
Gateway Center, Raymond Boulevard &
McCarter Highway
Newark, NJ, 973/622-5000

Robert Treat Hotel
50 Park Place, Newark, NJ, 973/622-1900

Hampton Inn & Suites Newark Riverwalk
100 Passaic Ave, Harrison, NJ, 973/483-1900

NEAR NEWARK LIBERTY INTERNATIONAL AIRPORT

Best Western Newark Airport West
101 International Way, Newark, NJ, 973/621-6200

Hilton Newark Airport
1170 Spring Street, Elizabeth, NJ, 908/351-3900

Holiday Inn Newark Liberty International Airport
160 Frontage Road, Newark, NJ, 973/589-1000



2015 Highlanders Men's Fencing

Standing L-R: Assistant Coach Danielle Henderson, Simon Rizell, Assistant Coach Ben Igoe, Andrew Mendez, Tristan Quinton, Ryan Hrapsky, Cole Degeorges, Tritan Decker, Gal Gluhic, Eduardo Ezcurra, Chris Saulys, Henrique Marques, Assistant Coach Jason Henderson, Head Coach Yefim Litvan

Kneeling L-R: Robert Slawinski, Ege Ayan, Dan Boylan, Maxwell Miller, Greg Puccio, Nicholas Concepcion, Ian Constantin



2015 Highlanders Women's Fencing

Standing L-R: Assistant Coach Danielle Henderson, Assistant Coach Ben Igoe, Maria Sztan, Julia Garcia, Katarina Jevtic, Mehnaz Moon, Jule Shighara, Assistant Coach Jason Henderson, Head Coach Yefim Litvan

Kneeling L-R: Abigail Bazile, Michelle Potestio, Lenna Nashif, Tess Dalton, Necha Jagtap

2015-16 HIGHLANDERS FENCING

OCTOBER

9-12 Fri.-Mon. October NAC (Richmond, VA) (M/W) 8am

NOVEMBER

Stevens Invitational

5 Thu. at Stevens (M/W) 5pm
vs. NYU (M/W)

Columbia Invitational

6 Fri. at Columbia (M/W) 5pm
vs. Hunter (M)
vs. Stevens (M)
vs. Northwestern (W)
vs. FDU (W)

Elite Penn Invitational

21-22 Sat.-Sun. at Penn (M/W)

10am

vs. Norte Dame (M/W)
vs. Johns Hopkins (M)
vs. Temple (W)
vs. Columbia (M)
vs. Princeton (M/W)

MACFA B vs. C (at Hunter College – New York, NY)

22 Sun. vs. William & Mary (M) 10am
vs. Navy (M)
vs. Johns Hopkins (M)
vs. Maryland (M)

DECEMBER

Sacred Heart Invitational

6 Sun. at Sacred Heart (M) 10am
vs. Penn State (M)
vs. Harvard (M)
vs. North Carolina (M)
vs. Vassar (M)
vs. NYU (M)

JANUARY

DeCicco Duals

16 Sat. at Notre Dame (M/W) 10am
vs. Sacred Heart (M/W)

vs. Wayne State (M/W)

vs. Cleveland State (M/W)

vs. Lawrence (M/W)

vs. Detroit Mercy (M/W)

Philadelphia Invitational

23-24 Sat.-Sun. vs. Duke (M/W) 10am
at Penn (M/W)
vs. North Carolina (M/W)
vs. Lafayette (M/W)
vs. Haverford (M/W)

Eric Sollee Invitational

30 Sat. at Brandies (M/W) 10am
vs. Brown (M/W)
vs. Boston College (M/W)
vs. MIT (M/W)
vs. Haverford (M)

FEBRUARY

MACFA B Round-Robin

7 Sun. at Stevens (M) 10am
vs. Army (M)
vs. Hunter (M)
vs. Yeshiva (M)
vs. TCNJ (M)

FDU Invitational

7 Sun. at FDU (W) 10am
vs. Temple (W)
vs. Stevens (W)
vs. Brandies (W)
vs. Johns Hopkins (W)

MACFA A vs. B (at Hunter)

14 Sun. Vs. Cornell (M)
vs. Lafayette (M)
Vs. Drew (M)
vs. Rutgers (M)
vs. Haverford (M)
MACFA Conference Championships (M) 10am

MARCH

12-13 Sat.-Sun. NCAA Regionals (M/W) (at TBD) 8am

24-27 Thu.-Sun. NCAA Championships (M/W) (at Brandies)

Head Coach: Yefim Litvan

Assistant Coaches: Jason Henderson, Danielle Henderson, Ben Igwe