



NEW JERSEY INSTITUTE OF TECHNOLOGY  
**MEN'S & WOMEN'S FENCING**  
2014-15 MEDIA GUIDE



Julia Garcia



David Kong

# HIGHLANDERS

[njithighlanders.com](http://njithighlanders.com)







**Follow us on Facebook: <https://www.facebook.com/NJITFencingTeam>**  
**Follow us on Twitter: <https://twitter.com/njithighlanders>**

## TABLE OF CONTENTS

About NJIT .....	2-7
University Administration .....	8-11
Athletics Senior Staff .....	11
Sports Medicine .....	12-13
Strength & Conditioning .....	14-15
Academic Enrichment .....	15-16
Remembering Joe Caiola .....	17
Athletic Administration & Coaching Staff ..	18
NJIT in Division I .....	19-21
Athletics Facilities .....	22-26
About Newark .....	27
Sports & Entertainment Around Newark	28-29
David Kong, NCAA Competitor .....	30-31
Coaching Staff .....	32-33
2014-15 Rosters .....	34-35
Program History .....	36-37
Men's Year-by-Year .....	38-43
Men's All-Time Varsity Roster .....	44-46
Women's Year-by-Year .....	47-48
Women's All-Time Varsity Roster .....	48
Hall of Fame .....	49
Directions to NJIT .....	50

## MEN'S & WOMEN'S FENCING

**Head Coach:** Yefim Litvan  
**Phone/Email:** 973-596-8490/litvan@njit.edu  
**Record at NJIT:** Men 42-97 (7); Women 19-60-1 (7)  
 13 NCAA berths in 13 seasons at Rutgers  
**Assistant Coaches:** Jason Henderson, Danielle Henderson, Henry Kennard  
**First Year of Program:** Men 1935-36; Women 1982-83  
**2013-14 Records:** Men 6-16; Women 5-14

## QUICK FACTS

**Location:** University Heights, Newark, NJ  
**Founded:** 1881  
**Enrollment:** 10,130 (total) | 7,286 (undergraduate)  
**NJIT website:** www.njit.edu  
**Nickname/Colors:** Highlanders/  
 Red and White (Blue accent)  
**Home Court:** Fleisher Athletic Center Multipurpose Room  
**Affiliations:** Middle Atlantic Collegiate Fencing Association (Men); National Intercollegiate Women's Fencing Association (Women)  
**University President:** Dr. Joel Bloom, EdD  
**Director of Athletics:** Lenny Kaplan  
**Athletic Department Phone:** 973-596-3636

## WHY HIGHLANDERS?

The home of NJIT, University Heights, was formerly known as the Newark Highlands and NJIT's mailing address used to be High Street, until the thoroughfare was renamed in memory of Dr. Martin Luther King, Jr.

In 2006-07, NJIT athletics, in keeping with its move to NCAA Division I, unveiled a new graphic identity, which included a new Highlanders logo. Developed by CN Foundry for NJIT, the logo depicts the traditional Highlander, whose ferocity and bravery against all odds are the stuff of legend.

## MEDIA RELATIONS

**NJIT Athletics website:**  
 www.njithighlanders.com  
**Facebook & Twitter:** @NJITHighlanders  
**Assistant AD for Sports Information:**  
 Tim Camp, 973-596-8461/timothy.camp@njit.edu  
**Assistant SID:** Stephanie Pillari, 973-596-8324/  
 pillari@njit.edu  
**Assistant SID:** Courtney Caden, 973-596-8485 /  
 caden@njit.edu

## MEDIA INFORMATION

This guide is designed to assist in coverage of NJIT men's and women's fencing. For home matches, the NJIT sports information office will provide an official box score following each match. Coach Yefim Litvan and requested athletes will be available for interviews on the field following a 10-minute cooling off period. Radio broadcast requests should be made at least 10 business days prior to the contest. Requests for coach and athlete interviews on nongame days should be made through the NJIT sports information office (973-596-8461).

## CREDITS

The 2014-15 NJIT Men's and Women's Fencing Media Guide is a production of the NJIT Sports Information Office in cooperation with the Office of Strategic Communications. Written and edited by Tim Camp and Stephanie Pillari. Cover and interior design by Karyn Olsen. NJIT photographs and information courtesy of Office of Strategic Communications. All interior team and action photography by Larry Levanti. Red Bull Arena photo (p. 29) courtesy of Getty Images/RBNY.

# About NJIT



**NJIT is New Jersey's Science & Technology University. With roots going back to 1881, when it was founded as Newark Technical School, New Jersey Institute of Technology observed its 125th anniversary in 2006.**

**Located in University Heights, Newark, NJ, home to more than 30,000 college students, NJIT's campus is just 10 miles from New York City.**

Playing a critical role in shaping New Jersey's future, NJIT, as a major public technological university, is an important pipeline for the flow of technology into society. The university's educational programs prepare students to be leaders in the technology-dependent economy of the 21st century. University researchers seek new knowledge to improve processes and products for industry. Through public and private partnerships and economic development efforts, the university helps to grow new business ventures that fuel the economy.

In recent years, NJIT has put tens of millions of dollars toward new and improved buildings and facilities on the 48-acre campus, including biomedical engineering labs and a campus center.

## Instructional Programs

NJIT offers an ever-expanding array of educational programs, with many new programs added in the last five years and more to come. In 2014 NJIT lists 125 undergraduate and graduate degree programs through six schools:

- Newark College of Engineering
- College of Architecture and Design
- College of Science and Liberal Arts
- School of Management
- Albert Dorman Honors College
- College of Computing Sciences

NJIT has 277 tenured or tenure track faculty; 99 percent of whom hold doctoral degrees or the highest degree attainable in their field. The student-faculty ratio is 16:1, with over 7,000 undergraduate students and nearly 3,000 graduate students. Our students hail from 33 states and more than 100 countries to rank eighth in the nation for diversity.





Albert Dorman Honors College enrolls more than 500 students who take advantage of honors courses, research opportunities, advising and mentoring. Honors College students have SAT scores ranking in the top 10 percent nationally.

With nearly 50,000 alumni, NJIT is an acclaimed institution.

- *BuzzFeed.com* ranked NJIT as the #1 higher education value nationally when considering annual tuition cost and average starting salary of graduates.
- Top one percent for return on investment and eighth in alumni earning potential among public universities nationwide – *PayScale.com*
- Top 10 percent nationally for return on investment and one of four best buys in New Jersey higher education – *Bloomberg Businessweek*
- Third in nation among America's Most Underrated Colleges – *BusinessInsider.com*
- Top National University – *U.S. News and World Report*
- 149th among national universities overall for its range of undergraduate majors and master's and doctoral degree programs and commitment to groundbreaking research - *U.S. News and World Report*
- An "America's Top College" – *Forbes.com*
- A *Princeton Review* Best College
- Top 200 American research universities – *The Center for Measuring University Performance at Arizona State*
- Top 50 among colleges without a medical school for research expenditures and top 10 among universities whose main research is in engineering – *National Science Foundation*
- Top 10 among technological universities in faculty scholarly productivity – *Academic Analytics*
- Top 100 producers of minority degrees, including fifth in the nation for bachelor's degrees in engineering technologies to all minority students – *Diverse: Issues in Higher Education*

# About NJIT

## Research

NJIT's research expenditures totaled more than \$110 million in FY2014 and faculty members welcome student collaboration on research projects.

As of September 1, 2014, NJIT had 185 issued U.S. Patents and 133 pending U.S. patent applications.

## Economic Development

NJIT is committed to economic development for Newark and the region. The university operates several outreach centers that provide direct technical assistance to the state's businesses with the goal of helping small and medium-sized companies. NJIT is also the home of New Jersey's oldest and largest incubator facility, and was one of the first institutions in the nation to adopt economic development as a fourth mission element, together with instruction, research and community service.

The Enterprise Development Center (EDC) at NJIT is New Jersey's largest high technology and life science business incubator, and one of the largest in the nation. EDC resident companies have attracted more than \$80 million in third-party funding since entering the incubator, and generated revenues of \$50 million last year. The approximately 90 member companies employ roughly 500 people.

## The Career Edge

- NJIT was named in the top 1 percent for return on investment and 8th in alumni earning potential among public universities nationwide by *Payscale.com*.
- Students get a head start on their careers through cooperative education, salaried internships that relate specifically to their field of study.
- The 10 fastest-growing occupations for college graduates include NJIT's newest program areas—physician assistant and physical therapy—as well as computer-related occupations.
- Among the CEOs of the S&P 500 companies, engineering is the single most common undergraduate degree (22 percent of the group). More than half of the CEOs have undergraduate degrees in engineering, business management, science, math, or computing.

## The Global Edge

The diversity in NJIT's student body and faculty prepares graduates to understand and succeed in the global marketplace.



## The Technology Edge

NJIT has been designated one of the nation's most technologically sophisticated universities by *Forbes.com* and a *Princeton Review* survey and the university has received major funding from the National Science Foundation and the National Security Agency in recent years.

## The Academic Edge

- NJIT named a Most Wired College by *Princeton Review*.
- NJIT was the first recipient of the Excellence in Technology Education Award presented by New Jersey Technology Council (NJTC), which annually recognizes outstanding technology companies and individuals who contribute to "growth, achievement, and excellence in diverse technology sectors of New Jersey."
- *Forbes.com* and a *Princeton Review* survey designated NJIT as one of the nation's most technologically sophisticated universities based on factors such as the ratio of computers to students, campus-wide and wireless networks, and technology-enhanced learning.
- NJIT has received major National Science Foundation (NSF) funding to define the next generation of computing applications. Most notable is the creation of *SmartCampus*, a wireless peer-to-peer, location-aware community system that immerses students in a world of wearable computers.
- NJIT has been designated a Center of Academic Excellence in Information Assurance (Homeland Security) Education by the **National Security Agency**.
- NJIT partners with Iowa State University in the Center for Information Protection (Homeland Security), an NSF-supported cooperative research center in information assurance.



# About NJIT



## The Regional Edge

New Jersey, with America's highest concentration of pharmaceutical, hi-tech, biotech, and medical device companies is the place to study technology. It has the nation's highest per capita number of engineers and scientists as residents, while also leading in per capita rate of patents issued. Further, the Newark-New York region is a living laboratory for architecture and building sciences, environmental engineering and transportation. .

## The Research Edge

NJIT has been designated by the State of New Jersey as the Homeland Security Technology Systems Center and NJIT operates the world-renowned Big Bear Solar Observatory.



## A History of NJIT

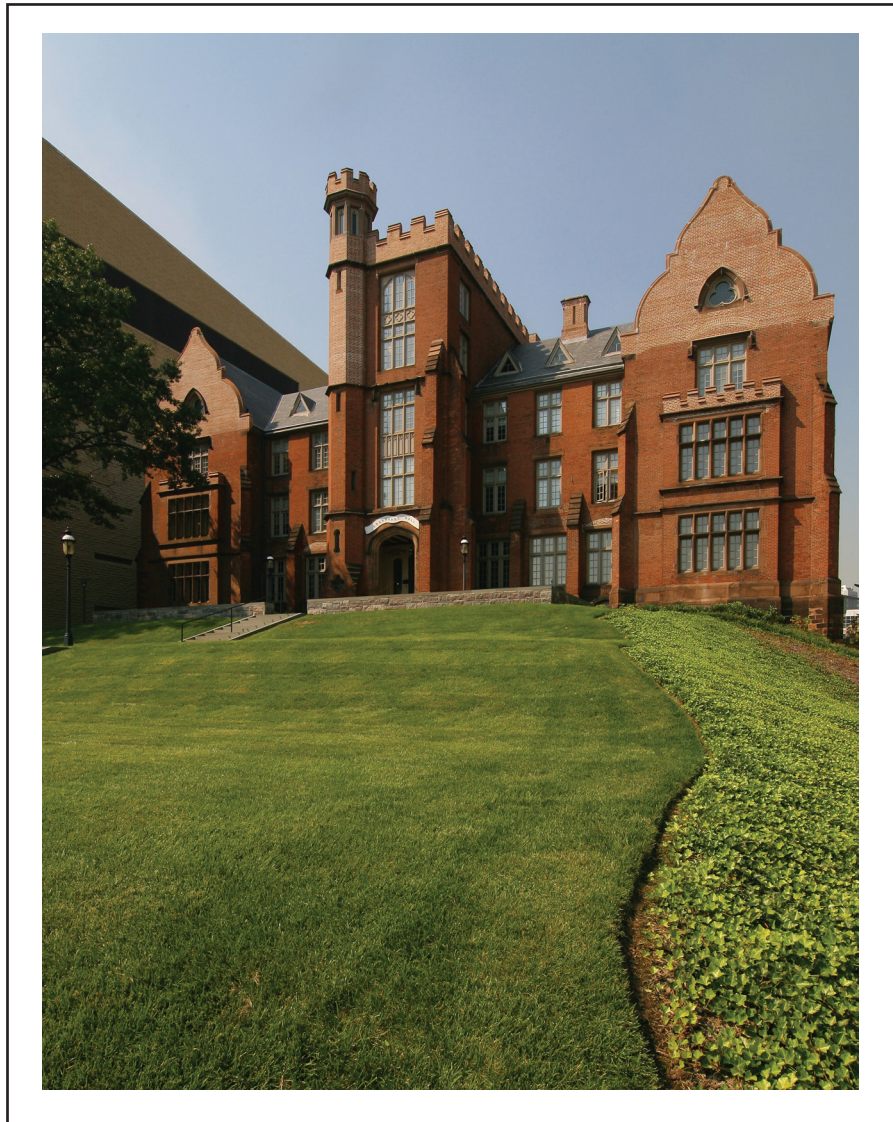
From the Industrial Revolution to the Information Age, New Jersey Institute of Technology has a rich history with its beginnings developing from the industrial age.

In 1881, an act of the New Jersey State Legislature, recognizing an urgent need, sought a home for what would be the state's technical school. The efforts of Newark's public and private sectors resulted with the opening of Newark Technical School, addressing the state's need.

Over time, the university expanded its curriculum and mission. In 1919, the university established baccalaureate programs in three engineering fields. By the middle of the 20th century, Newark Technical School was transformed into the robust Newark College of Engineering.

The post-war period was one of enormous activity with regular expansion of the campus, as well as the introduction of doctoral level programs. In 1975, with the addition of the New Jersey School of Architecture, the institution had evolved into a technological university, emphasizing a broad range of degrees and dedication to significant research and public service. Newark College of Engineering, stronger than ever, remained intact, but a new university name -- New Jersey Institute of Technology -- reflected the institution's expanded mission.

A broadened mission called for the creation of a residential campus and the opening of NJIT's first dormitory in 1980 began a period of steady growth that continues. Two new schools were established during the 1980s--the College of Science and Liberal Arts (1982) and the School of Industrial Management (1988). The Albert Dorman Honors College was established in 1994, and the College of Computing Sciences, was created in 2001. Beginning in 2009 the College of Architecture and Design was created to house the New Jersey School of Architecture and the new school of Art and Design.



# Administration

## Dr. Joel Bloom

### *President, New Jersey Institute of Technology*

Appointed President of New Jersey Institute of Technology on January 12, 2012 by unanimous



vote of NJIT's Board of Trustees, Joel S. Bloom started his career in industry working as an economist.

He subsequently became an educator and administrator for the New York City public schools. Prior to coming to New Jersey, he worked as a research director and instructor at Teachers College, Columbia University.

In New Jersey, he managed state and federally-funded curriculum development and training centers for the state. From 1983 through 1990, Dr. Bloom served as assistant commissioner in the NJ Department of Education for the Division of General Academic Education. He was responsible for managing many of the education department's initiatives including competency testing, curriculum content standards, pre-school programs, establishment of 17 model effective schools, over 300 grants and contracts, and a \$24 million budget.

Immediately prior to his appointment as President, he served as Interim President from September 2011 until January 2012.

Prior to that, he was NJIT's Vice President for Academic and Student Services, as well as founding dean of the Albert Dorman Honors College.

Indeed, since joining NJIT in July 1990, Dr. Bloom has served the university in many capacities.

Promoted in 1996 to Vice President for Academic and Student Services, he was responsible for nine divisions of the university, including pre-college programs, enrollment management, continuing professional education, career development services, dean of student services, freshman studies, educational opportunity programs, library services, physical education and athletics.

Dr. Bloom was appointed as the first dean of the Albert Dorman Honors College in 1998, in addition to his vice president responsibilities. The Honors College enrolls over 650 students who come from 15 states and several foreign countries. The average SAT score is over 1340 and the majority of the incoming freshman class members graduated in the top 15 percent of their high school class. More than 50 percent of the Honors College students maintain a grade-point average higher than 3.5.

Dr. Bloom is chair of the Science Park Board, treasurer of the NJ President's Council, and treasurer of the NJEDge.Net Board. In addition, he serves as a member of the following boards: the Board for Communities and Schools, Newark Alliance, Philadelphia Alliance for Minority Participation, La Casa de Don Pedro, and the Association of Public and Land-grant Universities Presidents Council. Dr. Bloom has been the recipient of national and state education awards, as well as federal, foundation and corporate grant awards. He has published journal articles and presented papers on school improvement, curriculum development, college transition and student assessment.



Dr. Bloom holds a master's degree and a doctorate from Teachers College, Columbia University. He also earned master's and bachelor's degrees from Hunter College of the City University, New York City.

## Charles J. Fey

### *Vice President for Academic and Student Services*



Dr. Fey joined NJIT in September 2012 with 39 years of leadership experience in student services as Vice President of Academic Support and Student Affairs.

At NJIT, he continues his commitment to creating a campus climate that promotes student achievement and student success. His personal philosophy of student engagement extends to the development of innovative programs that inspire challenging and engaging student experiences and encourage each student to reach for his/her dream and work until it is achieved.

Dr. Fey's strong record of accomplishments demonstrates his deep understanding of emerging issues and trends that affect metropolitan campuses and the students who attend them. In addition to his direct involvement with students, Fey oversees numerous offices and departments at NJIT, including including Intercollegiate Athletics, Recreation and Intramurals, Physical Education.

Fey actively participates in student affairs business on a national level and holds or has held board positions in ACPA, NASPA, and APLU. He was the founding president of the Massachusetts College Personnel Association and was president of the Texas Association of College and University Personnel Association. Fey has received numerous awards including the Esther Lloyd Jones Professional Service Award from ACPA; is a Diamond Honoree of ACPA's Foundation; twice received the Outstanding Service award from the Commission on Administrative Leadership of ACPA; and an exemplary service award from MCPA.

Fey earned his bachelor's degree in liberal arts and his masters of education degree in counselor education, college student personnel services, both from The Pennsylvania State University. He holds a doctorate in higher education administration from Texas A&M University.

Prior to NJIT, he was the Vice President for Student Affairs at The University of Akron; was Vice President for Student Affairs at University of Maryland, Baltimore County (UMBC); Dean of Students at the University of Texas at El Paso; served as Vice President and Dean of Student Life at Our Lady of the Lake University in San Antonio; Dean of Students at St. Mary's University, also in San Antonio; Associate Dean of Student Affairs at Keene (NH) State College; Director of Housing/Resident Life at Catholic University of America; and in numerous student affairs and other administrative posts at Newbury Junior College in Boston.

Married to Melba Ann Fey since 1985, Charlie and Melba have two daughters, Kelly Prestel, living in Boston, and Chelsea Fey, living in Arlington, VA and two sons, Lloyd Lopez and Matt Lopez, who live in San Antonio.

# Administration

## Lenny Kaplan

### *Director of Athletics*



Since taking over as head of NJIT's division of physical education and athletics in August 2000, Lenny Kaplan has been instrumental in guiding NJIT's reclassification to NCAA Division I.

First, Kaplan helped stabilize and expand a program that was entering its fourth year in Division II when he arrived in Newark. In late 2002, after discussions with then-President Dr. Robert A. Altenkirch and then-Vice President Dr. Joel Bloom, Kaplan took on the task of steering NJIT's programs into Division I, a process that reached fruition with the NCAA's granting active Division I status, with full championship eligibility effective September 1, 2009.

Throughout Kaplan's tenure, NJIT has enhanced the athletics program, particularly in areas that benefit the student-athletes directly. A hallmark in achieving that aim was the Highlanders Athletics Campaign, which announced in the summer of 2009 that it had raised \$5.4 million against a goal of \$5 million. Of the \$5 million in the goal, \$3 million was for facilities, \$1.5 million for athletics scholarships, and \$500,000 for program support.

The sports offerings have expanded to its current 19 varsity programs, with the newest, men's lacrosse set to debut in 2015. Since 2004, NJIT has renovated its two main on-campus venues—Lubetkin Field at Mal Simon Stadium and the Estelle and Zoom Fleisher Athletic Center. Further, the newest facility, the Naimoli Family Athletic and Recreational Facility, a 25,600-square foot building opened in March 2011 as a heated and air conditioned space that includes indoor tennis courts used for intercollegiate competition.

On Kaplan's watch, the school signed a 10-year partnership to play all home baseball in the professional Bears and Eagles Riverfront Stadium and later agreed to host basketball in the Prudential Center, the downtown Newark home of the NHL's New Jersey Devils.

Under Kaplan's leadership, many teams achieved regional and national Division II ranking. Success for several women's teams was unprecedented, with basketball, tennis and soccer all reaching postseason play for the first time under his administration.

Additionally, men's volleyball captured a 2007 divisional championship in the Eastern Intercollegiate Volleyball Association and the next year reached the EIVA playoff semifinals hosted by eventual 2008 national champion Penn State.

In 2009-10, NJIT's first full year as an active member of NCAA Division I, the women's volleyball team and senior Sabrina Baby became the school's first national statistical champions at the Division I level, as team and individual leaders, respectively in digs per set. Baby was honored as NJIT's first CoSIDA Academic All-America in the Division I era, earning third-team national honors.

Christian Baumbach made history in 2009 when he was NJIT's first Division I individual sport conference champion, taking first place in the Great West Conference cross country race and in the prestigious IC4A University Division race, a competition held for the 101st time in 2009.

Kaplan guided the Highlanders into the all-sports Great West Conference and the women's tennis team won back-to-back GWC titles in 2011 and 2012. In 2012-13, both NJIT basketball teams captured GWC crowns, with the men winning their regular season title and the women's winning the GWC postseason tournament.

Two Highlanders men's basketball standouts—Isaiah Wilkerson (Class of 2012) and Chris Flores (Class of 2013)—received honorable mention on the Associated Press All-America team, the first such national honorees for NJIT at the Division I level.

Wilkerson continued his career as a professional in the NBA D-League and Flores and women's basketball star Rayven Johnson (Class of 2013) went overseas to professional careers in Germany.

In 2012-13, baseball pitcher Mark Leiter, Jr., was selected by the Philadelphia Phillies organization in the Major League Baseball First-Year Player draft and fellow pitcher Tripp Davis signed as a free agent with the Kansas City Royals organization.

In 2013-14, Marko Drljic became the first NJIT men's soccer player to be selected to the All-Region season honors from the NSCAA at the highest level, earning NSCAA/Continental Tire Division I Men's All-North Atlantic Region honors, while men's tennis player Markus Schultz advanced to the round of 16 at the 2013 USTA/ITA National Regional Championships, the furthest any NJIT tennis player has advanced at the ITA tournament.

Two members of the NJIT men's basketball team, Terrence Smith and Damon Lynn finished the 2013-14 season ranked in the top 4 in the nation—Smith third in individual field-goal percentage and Lynn fourth in 3-point field goals made.

NJIT men's fencer David Kong whose weapon is the foil, earned a 16-place finish at the US National Championships and ranks 24th in the nation and 14th under 20. He placed 18th in the men's foil competition at the 2014 NCAA Fencing Championships, becoming the first NJIT fencer in 10 years to advance to the championships.

John Porteous became the first NJIT track and field athlete to qualify to the 2014 NCAA Track and Field Regional, earning a spot in the men's 400-meter hurdles.

Two NJIT sports, women's tennis and men's soccer, were invited to join automatic qualifying Division I conferences in their respective sports. Women's tennis is in the America East Conference, reaching the AEC final in 2014 and men's soccer is one of programs in the Sun Belt Conference, which is sponsoring the sport in 2014 for the first time since 1995.

Before coming to NJIT, Lenny Kaplan served 11 years at Manhattan College, where he began as Manhattan's director of operations and was assistant athletics director from 1991-2000.

Kaplan, a 1988 graduate of St. John's University with a degree in athletics administration, resides in Merrick, NY, with his wife, Nancy, and their sons, Michael and Joshua.

---

## Athletics Senior Staff



**Alexis Schug**  
Assoc. Director of Athletics/SWA  
(973) 596-8452 schug@njit.edu



**Tim Camp**  
Asst. Director of Athletics/Sports Information  
(973) 596-8461 timothy.camp@njit.edu



**Jayson Smikle**  
Assistant Athletic Director for Compliance  
(973) 596-5278 jsmikle@njit.edu



# Administration

## Sports Medicine

NJIT sports medicine is moving forward with the growth of the Highlanders program. Head trainer Matt Koscs, MS/ATC, oversees the program, ably assisted by assistant trainers Paul Grayner, MED/ATC; Melissa Maskery, MS, ATC; Brittany Vondran, MS/ATC; and, Kyle Tuohy, BS/ATC.



**Matt Koscs, ATC, Head Athletic Trainer**

Matt Koscs, who earned both his bachelor's and master's degrees from University of Delaware, has served NJIT as head trainer since July 2009, a year after he joined the staff as an assistant trainer.

As an undergraduate at Delaware, he was recipient of the Paris Delligatti Memorial Award for Excellence in Athletic Training. He earned his MS in Exercise Science from Delaware in 2008.

Prior to his arrival at NJIT, Matt served three years as the head athletic trainer at Hodgson Vocational Technical High School in Newark, DE, from 2005 to 2008.

In addition to his work at the high school level, he was head athletic trainer for the Delaware Dynasty semi-pro soccer team in Wilmington, as well as with the Kirkwood Soccer Club in New Castle in 2005 and 2006.

He was employed from 2005 to 2008 at Christiana Care Physical Therapy Plus, in Newark, DE, where he was an athletic trainer and was the Director of Athletic Training Services in a clinical setting.

He is a NATABOC certified athletic trainer, as well as holding additional certifications as a professional rescuer and in first aid.

He resides in Metuchen, NJ with his wife Kristin and daughters Eloise, Claire and Madeleine.



**Paul Grayner, ATC, Assistant Athletic Trainer**

Paul Grayner, who joined the NJIT staff as an assistant athletic trainer late in the 2008 calendar year, has a diverse background in athletic training, having served at the college and professional levels, as well as in a fitness center setting.

A graduate of Saint Leo College in Florida and holder of a master's degree from American University in Washington, DC, Grayner has served as both a head and assistant trainer in the past.

From the mid-1970s to the mid-1980s, he was a trainer in the minor league systems of the New York Yankees and New York Mets from 1977 to 1985 and in 1984 he was assistant trainer with the Mets. He later worked with the Long Island Knights professional basketball team.

At the collegiate level, he was head trainer at Division I Fairleigh Dickinson University in Teaneck, NJ from 1989 to 1998 and he earlier worked as an assistant trainer at Hofstra (1982-85) and Adelphi (1985) on Long Island before joining FDU as an assistant (1986-89).

In addition to his work in athletic training, Grayner is a financial services representative and a life insurance sales representative.

He resides in Dumont, NJ.



**Brittany Vorndran, ATC, Assistant Athletic Trainer**

Brittany Vorndran, who joined the NJIT staff as an assistant athletic trainer in the summer of 2012, earned her bachelor's degree, majoring in athletic training, from Bridgewater (MA) State University in 2010 and was the school's 2008-09

Athletic Training Student of the Year.

She earned her master's in Kinesiology at James Madison University in Harrisonburg, VA, in May 2012.

At James Madison, she worked with the cross country, track and field, tennis and cheerleading teams.

A resident of Millville, NJ, she has worked as a substitute teacher for the Millville Board of Education.



**Melissa Maskery, ATC,  
Assistant Athletic Trainer**

Melissa Maskery, who joined the NJIT staff as an assistant athletic trainer in the summer of 2013, earned her bachelor's degree, majoring in athletic training and minoring in strength and conditioning, from the

University of Delaware in 2011.

She earned her master's in athletic training at Temple University in May 2013.

As a graduate assistant, she worked in Philadelphia with several Division I teams at Drexel University and as an undergraduate, on the medical staff for Delaware's 2010 Division I Football Championship Series (formerly known as Division I-AA) national runner-up.

She has worked as a trainer at numerous summer camps and before coming to NJIT, she earned the 2013 Merit Award for Research in the College of Health Sciences & Social Work and was the recipient of Drexel University Dragon Award for Leadership.

She is married to Mark Mackey.



**Kyle Tuohy, ATC, Assistant  
Athletic Trainer**

Kyle Tuohy, a 2014 summa cum laude graduate of East Stroudsburg (PA) University, joined the NJIT athletic training staff in September 2014.

Tuohy, who will attend graduate school while working

at NJIT, won multiple awards from his alma mater, including the David Carylton Athletic Training Outstanding Student Award in May 2014.

He had varied clinical internship experience starting in the Fall Semester 2012 and continuing through his senior year.

His internships included stints with the East Stroudsburg women's basketball team; Parkland High School and Pen Argyl High School, both in Pennsylvania; the Tennessee Smokies professional baseball team, Class AA minor league affiliate of the Chicago Cubs; and Lafayette College in Easton, PA, where he worked closely with the Leopards football team in season and also worked with athletes from all in-season sports in the Fall Semester.

He holds several profession-related certifications, including from the National Athletic Trainers Association.



**Louis Rizio, MD, Team  
Physician**

Dr. Rizio is a board certified orthopedic surgeon and is fellowship trained in the field of sports medicine. He is a graduate of Rutgers and after earning his medical degree from the UMDNJ/New Jersey Medical School (recently

reorganized and renamed Rutgers Biomedical and Health Sciences), Dr. Rizio completed his orthopaedic residency at Tufts University in Boston.

# Administration

He then completed a sports medicine fellowship at the University of Miami. During his fellowship, he was assistant team physician of the Miami Dolphins, University of Miami Hurricanes, and the Florida Marlins.

Dr. Rizio, who specializes in sports-related injuries, practices at the Sports Medicine and Orthopaedic Center in Livingston, NJ. Prior to starting his own practice, Dr Rizio was the Chief of Sports Medicine at the NJ Medical School from 2000-2005. He currently is a professional, college, and high school team physician.

In 2013, Dr. Rizio was honored by the magazine New Jersey Monthly on its "Jersey Choice Top Doctors" list.

## Strength and Conditioning

There are many ways to make a team better and a vital path to improvement comes with the mantra "bigger, stronger, faster."

It's how teams get better from within by maximizing individual and team performance in competition. The Strength and Conditioning staff also works closely with the Athletic Training Staff in the areas of injury prevention and rehabilitation.

In the summer and fall of 2014, NJIT's Strength and Conditioning took new direction with the appointment of Bobby Fisk as Head Strength and Conditioning Coach and Drew Culp as Fisk's Assistant Coach.



**Bobby Fisk, Head Strength & Conditioning Coach**

Bobby Fisk, who was a basketball player in his own college days and coached the sport after college, comes to NJIT from Xavier University in Cincinnati, where he was assistant coach of strength and conditioning for

the entire Musketeers' program, which competes in the Big East Conference.

Fisk, a native of Schenectady, NY, spent over two years at Hobart and William Smith Colleges in Geneva, NY, where, as head strength and conditioning coach, he worked with successful teams, including women's soccer (William Smith College), which won the 2013 NCAA Division III National Championship; football (Hobart), which advanced to the 2012 Division III national quarterfinals and the regional finals in 2011 and 2013; and basketball, where Hobart reached the second round of the 2012 NCAA Tournament.

Moving to the Division I level with Xavier in 2013-14, Fisk worked with all 16 of the school's teams, with a primary assignment to women's basketball, men's and women's soccer, baseball, and men's and women's tennis.

He is a graduate of the State University of New York College at Oneonta (BS, Business Economics, 2008), Averett University of Danville, VA (MBA, 2010), and California University of Pennsylvania (MS in Exercise Science, Performance Enhancement & Injury Prevention, 2013)

As a student-athlete, Fisk was a men's basketball player at NCAA Division I UMBC in Baltimore for three years before transferring to Oneonta, where he was on the team for two years, serving as captain as a senior and earning All-State University of New York Athletic Conference honorable mention.

As a senior for Oneonta's Red Dragons, he finished 16th in the nation in Division III in 3-point shooting percentage (.441) and 22nd in 3-pointers made per game (3.2) as a senior at Oneonta.

After graduation from Oneonta, he entered coaching while pursuing his master's degree at Averett, serving that program as assistant men's basketball coach (two years) and head strength and conditioning coach (one year).

Having received his master's degree from



Averett in December 2010, he returned home to the Schenectady area and worked April 2011 to July 2011 as assistant strength and conditioning coach at nearby Siena College and with the minor professional basketball Albany Legends (head strength and conditioning coach).

Fisk holds multiple certifications and professional memberships.



### **Drew Culp, Assistant Strength & Conditioning**

NJIT's head strength and conditioning coach Bobby Fisk named Drew Culp to be his assistant coach in September 2014.

Culp, who earned his bachelor's degree from Penn State University in 2010 and his master's degree from

Penn State in 2012, most recently served as a volunteer assistant strength and conditioning coach at nearby Seton Hall prior to accepting his position with NJIT.

At Seton Hall, Culp worked with the school's Big East Conference men's and women's basketball teams, as well as with the men's soccer team.

Between college and coming to New Jersey, Culp worked at Velocity Sports Performance in Irvine, CA. He was a Sports Performance Coach and Assistant Sports Performance Director. Specifically, he was the Head Strength and Conditioning Coach for the El Toro High School football team and also assisted in training National Football League combine athletes. He also offered private training to athletes in a range of sports and age levels.

Drew Culp was a graduate assistant strength and conditioning coach at Penn State, working with the Nittany Lions football team for over a year through preseason 2012 and working with 11 Olympic Sports teams in his final semester.

He holds multiple certifications, including both strength and conditioning and first aid and CPR.

## **Academic Enrichment**



### **Sandra Taylor, Director of The Learning Center**

Sandra Taylor was appointed as Director of The Learning Center in late September 2014 after serving as Interim Director for the previous 16 months.

She joined NJIT in January 2010 as Academic Advisor for Student-

Athletes working in NJIT's Center for Academic and Personal Enrichment (CAPE), which has since been renamed as The Learning Center.

She mentored student-athletes in the areas of academic support, personal development, leadership, and community service. She was instrumental in bringing the Chi Alpha Sigma Honor Society for student-athletes to campus and has been individually certified from the N4A (National Association of Academic Advisors for Athletics) as an academic advisor for student-athletes.

In May 2013, she was elevated to Interim Director of CAPE and presided over its transition to the Learning Center in August of 2014. The Learning Center provides academic support to all students, mentoring and workshops, tutoring in areas outside of math and writing, and testing accommodations for students with disabilities. She has served on NJIT's Strategic Planning, Academic Advising, Retention and Persistence, Customer Service, Student Satisfaction, and Athletic Oversight Committees.

Prior to joining NJIT, Taylor spent 17 years as a key member of the Manhattan College Department of Athletics. She earned both her bachelor's degree in secondary education and her master's degree in special education from Manhattan College and is working on her doctorate in educational leadership at St. Mary's University in Winona, MN.

Working in the athletics department at Manhattan, a founding member of the Metro Atlantic Athletic Conference, Taylor was Associate Director of Athletics and Senior Woman Administrator, having filled those posts from 1996 until joining NJIT in 2010,

# Administration

For much of her time on the Manhattan staff (1995 to 2003), she was Chief Athletic Department Compliance Officer, with responsibility for Manhattan's adherence to NCAA Division I, MAAC and college regulations. She began her service at Manhattan as Athletic Department Ticket Manager, serving in that capacity from 1993 to 2003.

In her time at Manhattan, she served on numerous NCAA, conference and internal college committees, including service on the NCAA Division I Management Council from 2004 to 2007 and as chair of the NCAA Women's Lacrosse Committee from 2002 to 2006.

At the conference level, she chaired the MAAC Women's Basketball Committee from 1997 to 2009 and also served on four other sport committees, as well as on the MAAC Committee on Athletic Administration, with service as vice-chair in 2008-09.

Internally at Manhattan, her assignments included service on the Middle States Review in 2000 and on the NCAA Certification Committee.

Sandra and her husband, Ken, who is Associate Commissioner for Men's Basketball and Baseball at the MAAC, reside in Monroe Township, NJ, with their daughters, Katherine, who was born in May 2004, and Samantha, who was born in July 2009.



**Mike Spisto, Eligibility Certification Officer/Academic Advisor for Athletics**

Mike Spisto moved to administration as NJIT's Eligibility Certification Office/ Academic Adviser for Athletics in the Spring of 2013, working in the Center for Academic and Personal Enrichment (CAPE), now named

The Learning Center.

For the previous five years, he was the top assistant coach on the men's basketball staff, working with head coach Jim Engles in an association that culminated with the Highlanders capturing the 2013

regular season championship of the Great West Conference.

In addition to 14 years college coaching—five at NJIT—he served as Director of Athletics at the State University of New York at Delhi in the two years before he joined Engles' coaching staff with the Highlanders.

He had two stints as head coach at SUNY at Delhi sandwiched around three years as a Division I assistant with Rider and Albany (NY). He began his coaching career with two years as an assistant at his alma mater, Division III SUNY Oneonta.

At Delhi, which is also an alma mater, he was head coach from 1999 to 2001, left to become a Division I assistant and then returned for another two-year stint as head coach from 2004 to 2006 before becoming AD at Delhi.

His head coaching record in four years at SUNY Delhi was 86-31 and both stints included championships and coaching awards. His first Division I coaching assignment came at Rider University in 2001-02, where he worked alongside Jim Engles as an assistant when Rider captured its first-ever Metro Atlantic Athletic Conference regular season championship.

Heading to the University at Albany (NY), he helped recruit the team that would win back-to-back America East Conference championships.

Spisto's coaching career began at Oneonta State following his 1997 graduation. In addition to his bachelor's degree from Oneonta, he earned an associate's degree from SUNY Delhi, as well as an MSS from United States Sports Academy.

He played at both Delhi and Oneonta and was all-region twice at Delhi, where he is the career assists leader. At Oneonta he was captain as a senior after winning an ECAC title his junior year.

Mike and his wife, Katie-Lynn, reside in Staten Island, NY, with their young children: sons Michael (9) and Christopher (6), and daughter Alyssa (2).

# Remembering Joe Caiola



On June 29, 2014, NJIT athletics lost one of its top administrators, Assistant Director of Athletics Joe Caiola, who passed away unexpectedly at the age of 57 in Fort Myers, Florida.

As hard-working and vital a contributor as he was the department's day-to-day operation, more important to the many that knew him was the way Joe touched so many lives with his warm personality and kind spirit.

Born in Newark on February 16, 1957, Joe Caiola earned two degrees from NJIT, a Bachelor of Science, cum laude, with a major in engineering technology in 1980, and a Master of Science in Management in 1984. He previously earned an Associate in Applied Science in 1978 from Brookdale Community College (Lincroft, NJ) in 1978.

While he was an undergraduate at NJIT, Caiola was a two-year member of the men's basketball team. In his final college game on February 29, 1980, Joe exploded for a career-high 40 points against Concordia of New York. In addition to being Joe's personal career-best, that 40-point total is sixth on the all-time list for the Highlanders, who have fielded intercollegiate basketball teams since 1922.

Upon graduation from NJIT, Caiola embarked on a career in marketing and management in technical staff augmentation and contract engineering services. He held that position full-time for over a decade and later began working as a developer of single-family homes.

However, sports remained a passion for Joe and, along with his full-time work, he became a part-time coach in boys basketball in the mid-1990s.

Not long after, he returned to NJIT as an assistant men's basketball coach in 1997 and soon added responsibilities as an Assistant Director of Athletics. Having spent 17 years on the staff at NJIT, he was the longest-tenured employee of the department among administrators and coaches. At the time of his passing, Joe held the title of Assistant Athletics Director for Business, Facilities, and Events Management.

In addition to his work for NJIT, he was active in youth basketball and baseball in Edison, NJ, his hometown for the last 29 years of his life.

An avid bike rider who, on more than one occasion, rode from Edison to Newark and back, a round-trip of nearly 50 miles, Joe also continued to play recreational basketball in his 50s and played every year in the annual NJIT Alumni basketball games, which he helped organize. He played

throughout the most recent alumni game, held in February 2014.

Joe Caiola was a special person, universally well-liked among his NJIT co-workers and his friendliness and his kind spirit were evident almost immediately when he met new people.

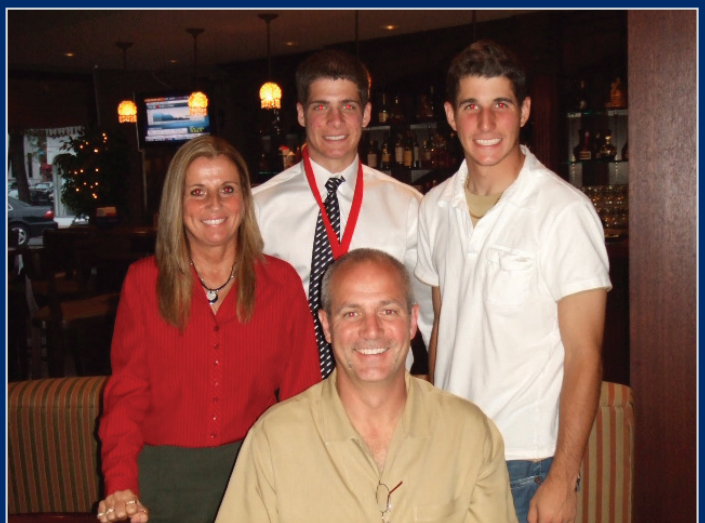
He enthusiastically took on new tasks on the job, no matter how difficult, and he was always the first to help others. Many a co-worker could tell personal stories of how Joe helped them in a time of need.

He worked especially closely with the Highlander baseball program and often traveled to the team's away games. He was the administrator-in-charge at several away Great West Conference baseball tournaments across the country and when NJIT hosted the 2013 Great West Conference Tournament, the last one for the GWC, he was Tournament Director, a post he also held when NJIT hosted previous baseball and soccer championship tournaments. Joe also accompanied other Highlander teams when they traveled to far away tournaments.

He is survived by his wife Carol and their two sons, Joe and Anthony. Both sons followed in their father's path, attending and graduating from NJIT. Joe, the elder of the Caiola brothers earned both bachelor's and master's degrees, while Anthony earned a bachelor's degree and played as member of the Highlanders baseball team for four years, completing his playing career in 2012.

His sons and their accomplishment were a special source of pride and joy for Joe. If you knew Joe well enough to speak to him regularly, you would hear news about all that his boys were doing as their lives progressed from high school all the way through college and entering the job market.

Joe is also survived by his parents, Nicholas and Filomena, and by his brother, Nicholas, Jr., in addition to numerous in-laws, nieces, nephews and cousins.





# Athletic Administration & Coaching Staff

## SENIOR ADMINISTRATION

Lenny Kaplan	Director of Athletics
Andrew Schwartz	Senior Associate Athletic Director
Alexis Schug	Associate Athletic Director/ Senior Women Administrator
Jayson Smikle	Assistant Athletic Director for Compliance
Tim Camp	Assistant Athletic Director for Sports Information
Mike Siegel	Faculty Athletic Representative
Brian Callahan	Senior Women Administrator Assistant Director of Physical Education

## ACADEMIC SUPPORT

Sandra Taylor	Director of The Learning Center; Academic Advisor
Mike Spisto	Athletics Eligibility Certification Officer/Academic Advisor for Athletics

## ATHLETIC TRAINING

Matt Koscs	Head Athletic Trainer
Paul Grayner	Assistant Athletic Trainer
Brittany Vorndran	Assistant Athletic Trainer
Melissa Mackey	Assistant Athletic Trainer
Kyle Tuohy	Assistant Athletic Trainer
Dr. Louis Rizio	Team Physician

## COMPLIANCE

Alexis Schug	Associate Athletic Director/ Senior Women Administrator
Jayson Smikle	Assistant Athletic Director for Compliance
Raquel Green	Compliance Coordinator

## DEVELOPMENT

Tim Paul	Assistant Development Director for Intercollegiate Athletics/Newark College of Engineering
----------	--

## FLEISHER ATHLETIC CENTER

Shannon Abraham	Operations Manager
Jonathan Walker	Front Desk
Danielle Dundas	Receptionist

## SPORTS INFORMATION

Tim Camp	Assistant Athletic Director for Sports Information
Stephanie Pillari	Assistant Sports Information Director
Courtney Caden	Assistant Sports Information Director

## STRENGTH AND CONDITIONING

Bobby Fisk	Head Strength and Conditioning Coach
Drew Culp	Assistant Strength and Conditioning Coach

## COACHING STAFF DIRECTORY

### BASEBALL

Brian Guiliana	Head Coach
Robbie McClellan	Assistant Coach
Grant Neary	Assistant Coach

### MEN'S BASKETBALL

Jim Engles	Head Coach
Brian Kennedy	Assistant Coach
Jesse Agel	Assistant Coach
Dino Presley	Assistant Coach
Jared Czech	Director of Basketball Operations

### WOMEN'S BASKETBALL

Steve Lanpher	Head Coach
Mark McCaleb	Assistant Coach
LaKea Jones	Assistant Coach
Epiphany Smith	Assistant Coach

### MEN'S & WOMEN'S CROSS COUNTRY

Al Alonso	Head Coach
John Crawford	Assistant Coach

### MEN'S AND WOMEN'S FENCING

Yefim Litvan	Head Coach
Jason Henderson	Assistant Coach
Henry Kennard	Assistant Coach
Danielle Henderson	Assistant Coach

### MEN'S SOCCER

Didier Orellana	Head Coach
David Janezic	Assistant Coach
Evan Brandsdorfer	Assistant Coach
Chris Condron	Volunteer Assistant

### WOMEN'S SOCCER

Mandi Risdien	Head Coach
Scott Waddell	Assistant Coach
Tim Verschuren	Volunteer Coach

### MEN'S SWIMMING & DIVING

Michael Lawson	Head Coach
Mark Albright	Assistant Coach
Shawn Bryan	Assistant Coach
Anthony Cacella	Volunteer Diving Coach

### MEN'S AND WOMEN'S TENNIS

Ira Miller	Head Coach
Livia Gherman	Assistant Coach

### MEN'S AND WOMEN'S TRACK AND FIELD (INDOOR & OUTDOOR)

Al Alonso	Head Coach
John Crawford	Assistant Coach
Robert Willmott	Volunteer Coach

### MEN'S VOLLEYBALL

Danny Goncalves	Head Coach
Brennon Dyer	Assistant Coach

### WOMEN'S VOLLEYBALL

Pete Volkert	Head Coach
Ariel Scott	Assistant Coach
Anthony Valbrun	Assistant Coach
Alicja Pawelec	Volunteer Coach

# NJIT & NCAA Division I



*Ryan Hrapsky*

**Beginning on September 1, 2009, the entire NJIT athletics program officially gained across-the-board active membership in NCAA Division I, completing a process that began officially in 2003.**

**NJIT, its teams and student-athletes enjoy the full benefits of Division I membership, including eligibility for Division I postseason championship competition and the inclusion of the Highlanders among the national Division I leaders in statistics maintained by the NCAA.**

Within months of NJIT's active Division I membership, the school won its first national Division I statistical championships, as women's volleyball players Sabrina Baby led the nation in digs per set and her teammates captured the team crown for digs, as well.

The NCAA's decision to make NJIT a full member of Division I completed a specific timetable that required NJIT and its Department of Athletics to meet a series of annual benchmarks before proceeding to the next step in the process.

NJIT, which competed in NCAA Division II beginning in 1997-98 and in NCAA Division III for more than two decades before that, made its first formal move toward Division I reclassification with men's soccer paving the way in 2003. That move grew out of November 2002 meetings among then-President Robert A. Altenkirch, then Vice President Joel Bloom (who would later succeed Altenkirch as NJIT's President) and Director of Athletics Lenny Kaplan. From there came a proposal for Dr. Altenkirch to the Board of Trustees, which unanimously approved in February 2003 a plan to reclassify men's soccer to Division I. Little more than two years later, the NCAA approved NJIT's proposal to begin advancing its entire program to Division I.

Men's soccer achieved active Division I status in 2005 and NJIT women's soccer became postseason-eligible in 2007. The remaining programs also began reclassifying in 2005, with active status taking longer for an entire athletics

# NJIT & NCAA Division I



*Michelle Potestio*

program than under the single-sport- per-gender track used for the two soccer programs.

In 2005-06 the lion's share of the competition for all but the men's soccer program came at the Division II level. In 2006-07, 2007-08, and 2008-09, NJIT's teams competed at the Division I level and fully complied with NCAA Division I rules, but were not eligible for championships at the top level.

Every facet of the program has been enhanced in the move to Division I with a special emphasis placed on student-athlete welfare. Facility upgrades have gone along with sports medicine staff expansion, a strength and conditioning program, and academic enrichment. NJIT has built a model NCAA Division I rules compliance regimen within its athletics program and across the entire university.

Further, the Board of Trustees embraced the transition to Division I as part of the University's strategic plan to enhance the quality of campus life for all students as NJIT makes the transition to being a residential university.

NJIT's teams have competed throughout the United States, taking on opponents from schools that are instantly recognizable for their stature in academics and athletics.

NJIT student-athletes have faced opponents every Ivy League institution, as well as the Patriot League, including Army and Navy, Buckell, Lafayette, and Lehigh.

The Highlanders have also competed against teams from every Division I conference with teams either in the Northeast or Mid-Atlantic States, including the America East, American Athletic, Atlantic 10, Big East, Colonial Athletic Association, Metro Atlantic Athletic, Mid-Eastern Athletic, and Northeast.



The eighth New Jersey-based institution in Division I, NJIT has competed against all seven of its home state peers, including Rutgers and Seton Hall.

In addition, Highlander teams have taken on squads from power conferences such as the ACC, Big Ten, Big 12, and Pac-12.

Two high-profile opponents, Maryland in men's soccer in 2005 and Penn State in men's volleyball in 2008, won national championships following the same regular seasons in which they faced NJIT.

NJIT joined its first Division I conference in 2009-10 when the Great West became an all-sports conference and women's tennis captured back-to-back league titles in 2011 and 2012. In 2012-13, the final year of the GWC, NJIT men's basketball was regular season champion and NJIT women's basketball was GWC Tournament champion.

Moving on from the Great West, NJIT women's tennis joined the America East Conference in 2013-14 and finished as conference runner-up in 2014, the Highlanders' first try at the AEC title. NJIT men's soccer began play as a member of the Sun Belt Conference in 2014, with the Sun Belt champion earning an automatic qualifying berth in the Division I College Cup field.



*Max Miller*

Also in 2013-14, NJIT men's swimming became one of three new members in the Coastal Collegiate Swimming Association (CCSA), a 15-member Division I association.

# Athletics Facilities

**The New Jersey Institute of Technology teams play home games and practice in a combination of facilities on campus and off.**

**The on-campus facilities include Lubetkin Field at Mal Simon Stadium for outdoor sports and the Estelle and Zoom Fleisher Athletic Center for indoor sports. In addition, NJIT in 2011 opened is the Naimoli Family Athletic and Recreational Facility, a multi-purpose indoor facility on the site of the former outdoor tennis courts.**

**Off-campus venues include Bears and Eagles Riverfront Stadium, a professional minor league stadium that is the home of NJIT baseball; the Prudential Center, home of the NHL Devils and NBA Nets, which has hosted selected NJIT basketball games; and, Branch Brook Park in Newark and Van Cortlandt Park in the Bronx, home sites for NJIT cross country. All except for Van Cortlandt Park are less than two miles from the NJIT campus.**

## Lubetkin Field at Mal Simon Stadium

The men's and women's soccer teams play their home games and practice on campus at Lubetkin Field at Mal Simon Stadium, a first-class venue for college soccer.

The field on the west end of NJIT's University Heights campus is an all-weather facility, with 24/7 availability for competition or practice. Outfitted with SprinTurf artificial grass in the summer of 2004, Lubetkin Field at Mal Simon Stadium also includes lighting for night contests, bleacher seating for more than 1,200 spectators, a press box and scoreboard.

The fully-enclosed facility, with its entrance a few feet opposite the entrance of the indoor Estelle and Zoom Fleisher Athletic Center, can take its place alongside any college soccer facility in the Northeast.

The home of Highlanders soccer served as the host site for the first-ever Great West Conference women's soccer championship tournament in November 2009. Previously, NJIT hosted the three-day 2005 ECAC Division II women's soccer championship tournament.

In the fall of 2005, when the Northeast was hit with record rainfall, games went on without a hitch at Lubetkin Field, thanks to the quality of the surface. Indeed, with the rain disrupting schedules around the region, some crucial Big East contests involving Seton Hall were moved to NJIT's home field. Those games, too, went off without a hitch.



*Lubetkin Field at Mal Simon Stadium*



## Estelle and Zoom Fleisher Athletic Center

The NJIT men's and women's basketball teams and men's and women's volleyball teams play their home games in the Fleisher Athletic Center gymnasium, while the swimming and diving team competes and practices in building's pool. The Fleisher Center also houses intercollegiate fencing, as well as all athletic department offices, varsity and general weight and fitness rooms, and the athletic training room.

In the summer of 2006, the gym underwent renovation to include installation of a new floor and baskets, new lighting, new sound system and new scoreboards, along with entirely new seating for approximately 1,500 spectators after the first phase of renovation. The back bay 'C gym' can be sectioned off from the main competition floor, making the facility useful for intramurals, physical education classes and campus recreation time, while being able to host multiple simultaneous events.

A six-lane swimming pool in Fleisher Athletic Center is home to the NJIT swimming team. Fencing has its own area on the second floor of the building.

In addition to all athletic department offices, the Fleisher Athletic Center also houses the sports medicine staff in the Athletic Training Room and the varsity weight room, supervised by the head strength and condition coach. The building's third floor is home to a fitness center, which is open for use by all students and staff.





# Athletics Facilities

## The Naimoli Family Athletic & Recreation Facility

Opened in 2011, the facility is approximately 25,600 square feet. The Naimoli Family Center will be a multi-purpose space for athletics, community recreation, and gatherings involving large numbers of people.

Built on top of the old outdoor tennis courts adjoining the Fleisher Athletic Center, construction of this new building has been made possible, in part, by a generous gift from Vincent Naimoli '62, Chairman and CEO of Anchor Industries International and Chairman Emeritus/Founder of the Tampa Bay Rays major league baseball team.

The facility houses courts for tennis and is available for other athletic and recreational activities, including practice for basketball and volleyball. It is heated and air conditioned, with flooring appropriate for the intended athletics and recreational activities.

Its indoor tennis courts offer vital year round practice and playing opportunities for NJIT's intercollegiate tennis teams, which have been consistently successful in the transition to Division I. In 2011, the women's tennis team became NJIT's first conference championship team in the Division I era.



*The Naimoli Family Athletic & Recreation Facility*

## Branch Brook Park and Van Cortlandt Park

A hallmark of the NJIT cross country program under veteran coach Al Alonso is its ability to host cross country competition that have made Highlander-sponsored races a popular destination for schools from throughout the New York/New Jersey area.

In 2009, NJIT hosted the Great West Conference championships at Van Cortlandt Park in the Bronx, and the course, which is home to some of the most prestigious events in the sport, is also the home venue for other annual NJIT-hosted races. Branch Brook Park, which is a public park of Essex County, reaches into several towns, including Newark, with the park entrance less than a mile from the NJIT campus.



*NJIT Athletics Weight Room at Estelle and Zoom Fleisher Athletic Center*

## Track Facilities

The NJIT men's and women's indoor track & field team trains at the Jersey City Armory which is home to a 6-lane indoor 200m track while the outdoor track & field team trains at the Nat Turner Park 6-lane outdoor 400m track.



## Prudential Center

In October 2007, the Prudential Center ushered in a new era in sports and entertainment in Newark and the entire northern New Jersey area.

Prudential Center is the cornerstone in the revitalization and renaissance of downtown Newark. In addition to the arena, Newark will soon add scores of condominiums, restaurants, themed bars and mixed retail establishments. Prudential Center, one of the finest arenas in the country, is New Jersey's home for hockey, basketball, concerts and numerous other events.

A public/private partnership between the City of Newark and Devils Arena Entertainment made the \$375 million Prudential Center a reality that is changing the face of downtown Newark and making it a destination place for sports and live entertainment in the region.

"The Rock" is located about a mile from NJIT's University Heights campus and is known best as the home of the National Hockey League New Jersey Devils and the former home of the National Basketball Association New Jersey Nets.

The arrival of the spectacular Prudential Center nearly coincided with NJIT's arrival as an NCAA Division I institution--the first in Newark and the newest in New Jersey in more than 20 years. The Rock opened one year after NJIT began Division I competition as part of its NCAA reclassification which is now complete.

In the arena's inaugural year, NJIT played host to six basketball games on four dates, including four men's basketball games and two women's games. Included was the first women's basketball game in the building's history, when the Highlanders entertained Cornell on January 15, 2008.

The Highlanders hosted additional basketball games in subsequent years and have played there each year of the building's existence. Further, NJIT's club ice hockey team plays all of its home games

in the full-size Devils practice rink facility (AmeriHealth Pavilion), which adjoins the main arena and has an 800-seat capacity. And one of the special events held in the main arena is NJIT's annual commencement.



# Athletics Facilities

## Bears and Eagles Riverfront Stadium: Home of the NJIT Highlanders

Joe Torre, then the manager of the New York Yankees, visited New Jersey Institute of Technology on December 8, 2005 to herald a new partnership between NJIT's baseball team, the Highlanders, and Newark professional baseball.

Torre was on hand as the Highlanders signed a 10-year contract to play their home games at Bears & Eagles Riverfront Stadium in Newark.

"I think this partnership is nothing but aces," Torre said during a press conference at NJIT. "It's a partnership between two class organizations that will make for nothing but a lot of fun for everyone."

For the previous two years, the Highlanders played their home games at the stadium. But the team's longer-term commitment to play at the stadium came as NJIT elevated its baseball program to Division I.

"NJIT is bringing Division I baseball to this great stadium," said NJIT President Robert A. Altenkirch, "which will generate the highest level of

excitement. It's a great partnership that allows NJIT to play intercollegiate baseball in a great facility, maybe the best for college baseball in the country."

Bears and Eagles Riverfront Stadium, the \$30 million state-of-the-art home of professional baseball in Newark, officially opened to the public on July 16, 1999.

With a seating capacity of 6,200 Bears and Eagles Riverfront Stadium affords everyone in attendance an up-close view of the action. The ballpark also has 20 luxury suites, a picnic area, a party deck, a concert stage situated behind the outfield wall and a major league-caliber press box featuring two radio booths and two television booths.

The name, Bears and Eagles Riverfront Stadium, honors Newark's rich baseball history. The original Bears were a farm team for the New York Yankees up until 1949 and the Eagles were a very successful Negro League team that played in Newark until 1950.

*Bears and Eagles Riverfront Stadium*





# About Newark



## Newark: The Renaissance City

NJIT is located in the heart of New Jersey's largest city, Newark, with a population of over 300,000, making it the 65th-largest city in the United States. A major urban center, Newark is a city on the move.

Attractions in Newark include:

- The Prudential Center, a major indoor entertainment and sports venue housing New Jersey Devils hockey and major concerts and other premier events
- New Jersey Performing Arts Center
- The Newark Museum
- The Newark Public Library
- Symphony Hall
- Branch Brook Park
- Art galleries, restaurants, shopping
- The Ironbound neighborhood, renowned for its dining and vibrant nightlife
- An urban architectural laboratory



## Newark: New Jersey's College Town

Some 30,000 undergraduate, graduate, and professional students attend classes in the University Heights section, which is home to NJIT, Rutgers-Newark, Rutgers Biomedical and Health Services, and Essex County College.

Adjacent to NJIT to the east, is the Newark campus of Rutgers University and the two schools enjoy an exceptionally close and productive relationship. NJIT and Rutgers students have library privileges at both campuses. NJIT students may also enrich their educational experience by enrolling in Rutgers-Newark courses and in full degree programs in disciplines not offered by NJIT, such as art, music, geology, and psychology.

Each year, the two universities co-sponsor a common season of theatrical productions, as well as 'World Week', a joint program of honors colloquia, and a variety of other cultural and social activities.

NJIT also enjoys a cooperative relationship with its neighbor to the west in the University Heights area, UMDNJ, with several joint degree programs.



## New Jersey/New York Metropolitan Region

NJIT and Newark are a part of a region that is a magnet not only to the rest of the United States, but also to the world.

In Newark and neighboring northern New Jersey alone, attractions such as the Prudential Center, New Jersey Performing Arts Center, Meadowlands Sports Complex, Red Bull Arena, Liberty Science Center, and numerous others are minutes away by car and in most cases accessible by public transportation. Literally dozens of shopping malls are within a 20-minute drive of Newark, as well.

Midtown Manhattan, with all that it and the rest of New York City offer, is less than 15 miles from the NJIT campus.

NJIT students have regular access to discount tickets for Broadway shows, museums, concerts, and sporting events.

The school also sponsors weekend trips throughout the northeastern United States, with activities such as skiing, boating, swimming, hiking, and more.

The spectacular Jersey shore is less than an hour away by car and winter sports are within a couple of hours drive to the west and north.

# Sports & Entertainment Around Newark

**NJIT, with its campus in Newark, NJ, sits in a region that abounds with major professional sports unlike any other in the United States and perhaps in the world. There are nine teams in the major professional leagues (MLB, NFL, NBA, and NHL) located in New York City, northern New Jersey and Long Island.**

**Only one of nine major teams is more than 25 miles from Newark, but most, including MetLife Stadium (Giants and Jets NFL football), Madison Square Garden (NBA Knicks, NHL Rangers), are much closer.**

**The three closest professional sports venues (listed below) are within three miles of NJIT's campus and can be accessed in a matter of minutes at low cost by public transportation, beginning with Newark Light Rail, from campus.**

## Prudential Center

The home of the National Hockey League New Jersey Devils is in downtown Newark at the corner of Mulberry and Edison streets, about one mile from the NJIT's University Heights campus.

Opened in October 2007, 'The Rock' is the centerpiece of the city's Downtown Core Redevelopment Project. In addition to NHL hockey, it has hosted numerous entertainment and sporting events, including NJIT basketball.

NJIT played basketball in the Rock in the inaugural year and in each year since. Indeed, NJIT hosted the first women's basketball game ever played in the Prudential Center on January 15, 2008 (NJIT vs. Cornell).

The arena, with full-capacity seating for 18,500 spectators, features a 4,800 square-foot exterior LED screen, as well as the latest in ice-surface technology and a gourmet restaurant overlooking the ice for Devils games. The building contains 850,000 square feet of space, 9,000 tons of steel, eight million pounds of structural steel and 25,000 cubic yards of concrete.





# Sports & Entertainment Around Newark



## Red Bull Arena

Located in Harrison, NJ, just across the Passaic River from Newark and less than three miles from the NJIT campus, the new home of the New York Red Bulls (opened in March 2010) sets the standard for soccer venues across North America.

The state-of-the-art soccer-specific facility is a major component of a multi-billion dollar development.

Red Bull Arena has a number of key design elements which give its seating bowl a close-to-the-action feeling and the unique stadium roof design extends from its leading edge over the entire seating bowl and then curve down to the concourse.

The overall seating capacity for soccer is 25,000, including 30 luxury suites (20 lower level and 10 upper level) and 1,116 club seats. Other amenities include three stadium clubs and two retail outlets.



## Bears and Eagles Riverfront Stadium

Bears and Eagles Riverfront Stadium, the \$30 million state-of-the-art home of professional baseball and, since 2004, the home of NJIT Highlanders baseball, officially opened to the public on July 16, 1999. With a seating capacity of 6,200, "The Den" affords fans an up-close view of the action. The ballpark also has 20 luxury suites, a picnic area, a party deck, a concert stage situated behind the outfield wall and a major league-caliber press box.

In December 2005, NJIT and the Bears held a joint press conference to herald a new partnership that includes a 10-year deal that extends Bears and Eagles Riverfront Stadium as the home of NJIT Highlanders baseball.



## Men's Fencer David Kong Competes at U.S. National Championships

Then-freshman David Kong, named Male Athlete of the Year for the entire NJIT athletics program, is a national contender, both in NCAA competition and in sanctioned outside competition within the sport.

He placed 16th in foil competition at the US National Championships in April and ranks 24th in the nation overall and 14th under 20 among all fencers. He placed 18th in the men's foil at the 2014 NCAA Fencing Championships in March, becoming the first NJIT fencer in 10 years to advance to the championships.

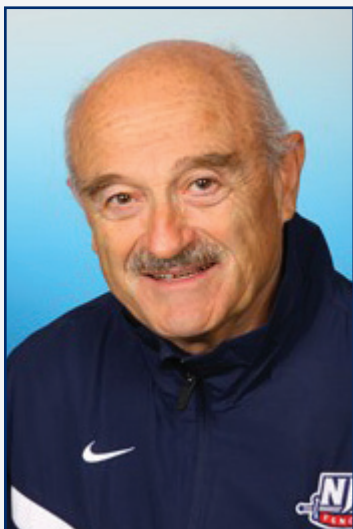
Kong finished in top six at the 2014 NCAA Mid-Atlantic/South Regional and captured the individual men's foil title at the 2014 MACFA Championships.

Earlier, participating in the Junior World Cup in Slovakia, he finished 86th in a field of 182 of the world's best young fencers and competed at the 2014 Junior Olympic Championships, finishing 19th out of 174 fencers.

The NJIT men's team had eight fencers and the women's team had four fencers in the 2014 NCAA Mid-Atlantic/South Regional Fencing Championships.



## Head Coach Yefim Litvan



Yefim Litvan, who has coached internationally for the United States in two Olympic Games and who recently completed a highly successful tenure as a college head coach at Rutgers University, became head coach of the men's and women's fencing teams at New Jersey Institute of

Technology in 2007.

Litvan, who was honored as 2007 Coach of the Year by the United States Fencing Association, entered college coaching in 1990. Since then, he has guided championship-level teams and individuals in both men's and women's fencing and in all three weapons of the sport--sabre, foil and epee.

An émigré from the former Soviet Union, Litvan became an assistant at the University of Pennsylvania in 1990, remaining there until being named head coach at Rutgers in New Brunswick, NJ, in June 1994. He was head coach of Rutgers until 2007 and then joined the NJIT staff.

He joined the United States National Team program in 1995 and was a coach in the 1996 and 2000 Olympic Games. Litvan, who also coached in the World University Games and in the Pan American Games, was on the US coaching staff for the fencing World Championships from 1995 to 1999.

In addition to his college and national team work, Litvan has coached at the New York Athletic Club since 1995 and worked with three fencers who

have combined to compete in five Olympic Games, while combining to win six United States national championships.

In 13 years as coach at Rutgers, Litvan led his teams to 13 berths in the NCAA national championships. The teams consistently finished in the top 15 and made the top 10 in seven NCAA tournaments.

In the March 2007 NCAA national championships, Litvan guided his team to a 12th-place finish. It was the final varsity fencing competition for Rutgers, which announced last year that it was eliminating six varsity intercollegiate sports, including fencing.

In 2003, under his tutelage, women's fencer Alexis Jemal, who had not competed interscholastically prior to college, captured the individual NCAA championship in the women's sabre. In 1996, Litvan's Rutgers team won the NCAA team championship in another weapon of fencing, the epee.

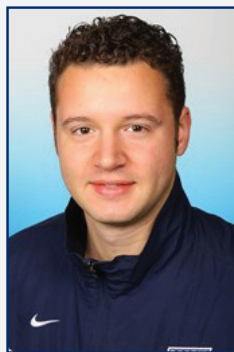
In four years at Penn, Litvan coached three All-Americans and two Ivy League team champions. The Penn women's team was second in the 1994 NCAA championship and the Penn sabre team was second at the NAAs in 1993 and third in 1994.

Litvan's coaching career began in the former Soviet Union in 1959, when he was based in Ukraine. Before immigrating to the United States, more than 20 of his protégés achieved the rank of Master of Sports in the former USSR.

At NJIT, he leads a sport with one of the longest, richest traditions at the school, with records dating back to 1935-36 on the men's side. A separate women's program was founded in 1982-83 and competed until 1990-91. The women's program was re-established in 2003-04 and continues as a Highlander varsity sport.



## Assistant Coach Jason Henderson



Jason Henderson, a star fencer for four years under the tutelage of Yefim Litvan at Rutgers University, was reunited with his old coach in the summer of 2010, signing on as an assistant coach at NJIT on the

staff headed since 2007 by Litvan.

Henderson, who graduated from Rutgers cum laude in January 2008, was a two-time NCAA All-American and four-time NCAA National Championship participant in a four-year career from 2003 to 2007.

A three-year team captain, Henderson graduated with 3.65 cumulative GPA with a double major in sports management and philosophy, making the dean's list for eight semesters and earning numerous awards for academic excellence and leadership.

Henderson was a member of the National Society of Collegiate Scholars; Rutgers Fencing MVP in 2004; Dean's Award for Co-Curricular Excellence; SAAC representative; Cap and Skull Honor Society; Athletic Director's Excellence Award; and, Chi Alpha Sigma—National Athlete Honor Society.

He went on to graduate school, earning a Master of Management Studies in May 2010 from Duke University's Fuqua School of Business.

He is co-founder and director of Air Castles and Slides, LLC, and ACVI Internet and Business Services, LLC, both based in Edison, NJ.

Henderson resides in Piscataway, NJ.

## Assistant Coach Danielle Henderson



A 2010 graduate of Rutgers University with a double major in Cultural Anthropology and Philosophy, Danielle Henderson has built a remarkable list of accomplishments as a scholar and as an athlete, particu-

larly in fencing.

She joined the NJIT fencing coaching staff in 2014-15, where she was reunited with her college coach, Yefim Litvan, and she also works alongside her older brother, NJIT assistant coach Jason Henderson, a two-time All-American for Rutgers in his own right.

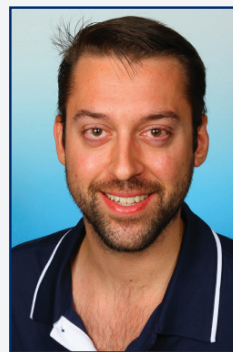
Danielle, who earned a master's in philosophy in Cultural Anthropology from Cambridge University in England in 2011 and she is a candidate for a JD from the University of Pennsylvania in 2015.

On the fencing strip, she was an All-American at Rutgers and also earned a "Full Blue" (highest honor in British University sport, fencing for Cambridge.

An international-level fencer, she was a member of the 2009 United States Pan American Games (western hemisphere) team champions and was a two-time national champion and United States World team member.

On top of all that, in addition to being the Most Valuable Player of the Rutgers fencing team, she was also a letter winner on the Rutgers women's rowing team and was that team's top erg scorer.

## Assistant Coach Henry Kennard



New to the NJIT fencing staff for 2014-15, Henry Kennard is a certified Prévôt of Foil by the United States Fencing Coaches Association, as well as being a 2008 graduate of St. John's University

in Queens, NY, where he was a 3-time All-American.

According to the USFCA official website, Prévôt is the second-highest of four certifications and, describes the site: "The Prévôt level is similar to the Master level professional fencing coach, with more emphasis on training fencers rather than other coaches ... Prévôt candidates must pass a thorough test comprised of oral, written, and practical parts. The practical examination is given by a certified board of two USFCA Fencing Masters."

A coach at the Brooklyn Bridge Fencing Club and Empire United Fencing before that, Kennard placed sixth in the NCAA championships as a fencer for St. John's in 2004, 2007, and 2008 and was All-American second team in each of those years. A junior National Champion in 2004, Kennard was the first high school fencer in Massachusetts history to go undefeated (69-0) in his senior year.

## 2014-15 Rosters

## MEN'S ROSTER

NAME	YR.	EVENT	HOMETOWN/HIGH SCHOOL
Kevin Butryn	Fr.	Epee	Randolph, NJ/Randolph
Ian Constantin	Jr.	Epee	Roselle Park, NJ/Academy for Information Tech.
Cole Degeroges	Fr.	Sabre	Warren, NJ/Watchung Hills Regional
Matt Downey	Sr.	Epee	High Bridge, NJ/Voorhees
Eduardo Ezcurra	Fr.	Epee	Las Rozas, Madrid/Colegio Europeo de Madrid
Andrew Gavrun	So.	Epee	Pompton Lakes, NJ/Pompton Lakes
Gal Gluhic	Fr.	Epee	Ljubljana, Slovenia/Gimnazija Bezigrad
Alex Lewis Hill	Fr.	Sabre	Teaneck, NJ/Teaneck
Ryan Hrapsky	So.	Epee	Point Pleasant Beach, NJ/Point Pleasant Beach
Mike Jurewicz	So.	Sabre	Whippany, NJ/Whippany Park
David Kong	So.	Foil	Rutherford, NJ/St. Peter's Prep
Henrique Marques	Fr.	Foil	São Paulo, Brazil/Colégio Porto Seguro
Andrew Mendez	Fr.	Foil	Newark, NJ/Queen of Peace
Maxwell Miller	Jr.	Foil	Harrington Park, NJ/Northern Valley Regional
Shivank Mishra	Sr.	Sabre	New Delhi, India/Rockwood School (India)
Ian Pershad	Sr.	Foil	Montclair, NJ/Montclair
Simon Rizell	Fr.	Foil	Göthenburg, Sweden
Robert Slawinski	Fr.	Sabre	Middletown, NJ/Middletown

## WOMEN'S ROSTER

NAME	YR.	EVENT	HOMETOWN/HIGH SCHOOL
Julia Aronov	Sr.	Epee	Forest Hills, NY/Francis Lewis
Abigail Bazile	Sr.	Epee	Teaneck, NJ/Teaneck
Grace Dong	Sr.	Foil	Plainsboro, NJ/WW-P High School North
Julia Garcia	Fr.	Epee	Madrid, Spain/Camilo Jose
Katarina Jevtic	Fr.	Sabre	West Allis, WI/Nathan Male
Jennifer Ligo	Sr.	Sabre/Foil	Dayton, NJ/South Brunswick
Michelle Potestio	Jr.	Foil	Staten Island, NY/Tottenville
Alessandra Rodrigues	So.	Foil	Bloomington, NJ
Jule Shigihara	Fr.	Foil	Bonn, Germany/Christophorusschule
Vera Shipman	Fr.	Epee	Newark, NJ/Montclair Kimberley Academy



*Jennifer Ligo*



*Abigail Bazile*



## Program History—Men

YEAR	W-L	COACH	CAPTAINS	MVP	
1935-36	4-6			---	
1936-37	4-6			---	
1937-38	9-1	Norman Wyckoff			---
1938-39	8-3-1	Norman Wyckoff			---
1939-40	7-1	Norman Wyckoff		---	
1940-41	6-2	Norman Wyckoff		---	
1941-42	7-0	A. John Geraci (player)		---	
1942-43		no team – World War II			
1943-44		no team – World War II			
1944-45		no team – World War II			
1945-46		no team – World War II			
1946-47	3-1	Smith		---	
1947-48	5-4	Smith (8-5)		---	
1948-49	5-0	Pelegrino Ringi		---	
1949-50	9-0	Pelegrino Ringi		---	
1950-51	8-0	Pelegrino Ringi		---	
1951-52	8-1	Pelegrino Ringi	Hamilton Bowser,	---	
1952-53	7-1	Pelegrino Ringi (37-2)		---	
1953-54	7-1	Paul Hausser		---	
1954-55	5-3	Paul Hausser		---	
1955-56	6-2	Paul Hausser		---	
1956-57	8-1	Paul Hausser		---	
1957-58	7-2	Paul Hausser		---	
1958-59	6-2	Paul Hausser		---	
1959-60	8-2	Paul Hausser		---	
1960-61	7-1	Paul Hausser		---	
1961-62	10-3	Paul Hausser		---	
1962-63	8-5	Paul Hausser		---	
1963-64	7-5	Paul Hausser		---	
1964-65	6-5	Paul Hausser		---	
1965-66	7-6	Paul Hausser		Stan Karamanol	
1966-67	7-6	Paul Hausser	Bruce Killy, Oleg Moiseenko	Oleg Moiseenko	
1967-68	7-6	Paul Hausser		Len Teslenko	
1968-69	8-3	Paul Hausser		Mike Morse	
1969-70	7-6	Paul Hausser		George Martinez	
1970-71	8-4	Paul Hausser		Greg Soriano	
1971-72	11-1	Paul Hausser		Garbor Hauer	
1972-73	7-7	Paul Hausser		Gary Marso	
1973-74	4-8	Paul Hausser		Jay Haase	
1974-75	6-6	Paul Hausser		Jay Haase	
1975-76	3-8	Paul Hausser		Jerry Spiesback	
1976-77	6-6	Paul Hausser		Bob Lynch	
1977-78	5-4	Paul Hausser		Peter Wessner	
1978-79	3-7	Paul Hausser		Bob Lynch	
1979-80	4-7	Paul Hausser		Bob Lynch	
1980-81		Paul Hausser		Steve Colucci	
1981-82		Paul Hausser	Steve Colucci	Steve Colucci	
1982-83		Paul Hausser		Peter An	
1983-84		Paul Hausser		Ron Heisler	
1984-85	1-8	Paul Hausser		Ron Heisler	
1985-86	2-9	Bob Lynch	Ernie DeRosa	Ernie DeRosa	
1986-87	1-9	Bob Lynch	Ernie DeRosa	David Cruz	

YEAR	W-L	COACH	CAPTAINS	MVP
1987-88	1-9	Bob Lynch		Saul Cruz
1988-89	1-9	Bob Lynch	Chris Kaplonski	Chris Kaplonski
1989-90	2-10	Bob Lynch	Mohammed Shafaie	Wayne Holness
1990-91	4-11	Bob Lynch (11-57)	Stephen Muccione	Mohammed Shafaie
1991-92*	10-4	George LaTorre	Patrick Clune, Fabian Herrera	Patrick Clune
1992-93*	11-6	George LaTorre (21-10)	P. Clune, J. Javier, F. Herrera	Patrick Clune
1993-94		Vladimir Lilov		Jeff Day
1994-95	5-10	Craig Garretson	Geovani Morales	David Johnson
1995-96	5-10	Craig Garretson	Idan Mandelbaum	Edwin Herrera
1996-97		Craig Garretson	Idan Mandelbaum	Idan Mandelbaum
1997-98	4-12	Craig Garretson		Hans Gangwar
1998-99	6-11	Craig Garretson		George Lane
1999-2000	5-11	Idan Mandelbaum		Thomas Nemeth
2000-01	2-16	Idan Mandelbaum (7-27)		Ian LaFond
2001-02	3-15	J. Mlynek/W. Rak	Chris Aliprantis	Ian LaFond
2002-03	9-5	Janusz Mlynek	Chris Aliprantis, Ian LaFond	Phil Dolata
2003-04	5-8	Janusz Mlynek	P. Dolata, M. Edzenga, I. LaFond	Phil Dolata
2004-05	6-11	Janusz Mlynek	Matt Edzenga, Michael Goldsmith	---
2005-06	0-12	Mac Shaker	Rob Tani, Michael Konchalski	Rob Tani
2006-07	1-14	Janusz Mlyneck	Rob Tani	Rob Tani
2007-08	1-17	Yefim Litvan	Javier Vasques	---
2008-09	6-18	Yefim Litvan	Zachary Hvizdak	---
* IAC Champion				
2009-10	9-10	Yefim Litvan	Zachary Hvizdak	---
2010-11	6-12	Yefim Litvan	Max McDermott	---
2011-12	6-12	Yefim Litvan	Max McDermott	---
2012-13	8-12	Yefim Litvan	Max McDermott	Guillaume Lanteri
2013-14	6-16	Yefim Litvan	Bryan Ransinague	David Kong

## Program History—Women

YEAR	W-L	COACH	CAPTAINS	MVP
1982-83		Bob Lynch		Miya Fennar
1988-89	---	Bob Lynch	none	Sarah Rees
1989-90	0-??	Bob Lynch		Ana Sofia Nola
1990-91	0-??	Frank Wadas		Ellen Duffy
2003-04	1-9	Janusz Mlynek	Crystal Cooper	Deepti Sanjai
2004-05	1-10	Januas Mlynek	Michelle Paulter	Deepti Sanjai
2005-06	1-10	Mac Shaker	Deepti Sanjai, Nyakiyo Kairu	Deepti Sanjai
2006-07	0-10	Janusz Mlynek	Jennifer Olszyn	Jennifer Olszyn
2007-08	0-2	Yefim Litvan	Nicole Fagundo	---
2008-09	0-3-1	Yefim Litvan	Vanessa Jorge	---
2009-10	1-16	Yefim Litvan	---	---
2010-11	4-9	Yefim Litvan	Jennifer Ramos	---
2011-12	3-6	Yefim Litvan	Jennifer Ramos	---
2012-13	6-10	Yefim Litvan	Julia Aronov	Julia Graham
2013-14	5-14	Yefim Litvan	Julia Aronov	Julia Aronov

Note: All blank information is not on file. Anyone with documentable proof of missing information is asked to contact NJIT Sports Information at (973) 596-8324 or pillari@njit.edu

background: Grace Dong



# Men's Year-by-Year Results

## 1935-1936 (4-6)

1/17	vs. Alumni	L	5-12
2/16	vs. Lehigh	L	8-9
	vs. Stevens	L	11-16
3/20	vs. Montclair Teachers	W	9-7
3/21	vs. Stevens	L	13-14
3/26	vs. Upsala	W	6-3
	vs. Princeton	L	5-12
	vs. Pahzer	L	4-5
	vs. Montclair Teaches	W	6-3

## 1936-1937 (4-5)

1/8	vs. Lafayette	L	2-15
1/14	vs. Montclair	L	4-5
2/20	vs. Lehigh	W	11-6
2/27	vs. Montclair	W	8-1
3/6	vs. Wagner	W	14-3
3/13	vs. Lafayette	L	5-12
3/20	vs. Temple	L	6-11
4/3	vs. Stevens	L	8-9
4/24	vs. Alumni	W	9-8

## 1937-1938 (9-1)

12/18	vs. Wagner	W	11-6
1/8	vs. Lafayette	L	8-9
1/15	vs. Montclair	W	5-4
2/12	vs. Newark University	W	7-2
2/19	vs. Panzer	W	6-3
2/26	vs. Temple	W	9-8
3/5	vs. Lehigh	W	9-8
3/12	vs. Drew	W	10-7
3/19	vs. NTS	W	8-1
3/26	vs. Alumni	W	10-7

Coach: Norman Wyckoff

## 1938-1939 (8-3-1)

12/17	vs. Newark University	W	10-7
1/7	vs. Montclair State	W	13-4
1/14	vs. Alumni	L	8-9
1/21	vs. Drew	W	9-8
2/4	vs. Wagner	L	8-9
2/11	vs. Panzer	W	9 ½ - 8 ½
2/18	vs. Temple	W	15-2
3/4	vs. Marlin Swim Club	T	
3/11	vs. Fordham	W	10-7
3/25	vs. Newark University	W	15-2
4/1	vs. Lafayette	W	9-8

Coach: Norman Wyckoff

## 1939-1940 (7-1)

12/16	vs. Montclair State	W	12-5
1/6	vs. Cooper Union	W	5-4
1/12	vs. L.I.U.	L	7-10
2/3	vs. Drew	W	12-5
2/9	vs. Newark State	W	5-4
2/17	vs. Brooklyn College	W	10-7
2/24	vs. Wagner	W	10-7
3/2	vs. Temple University	W	9-8

Coach: Norman Wyckoff

## 1940-1941 (6-2)

12/2	vs. Panzer	W	9-8
1/4	vs. Cooper Union	W	7-2
1/18	vs. Panzer	L	7-10
1/25	vs. Newark State	W	8-1
2/8	vs. Temple	W	9-8
2/15	vs. Drew	W	10-7
2/22	vs. Montclair State	L	8-9
3/1	vs. Wagner	W	9-8

Coach: Norman Wyckoff

## 1941-42

Hudson	L
Newark State Teachers	L
Panzer	
Drew	
Brooklyn	
Cooper Union	
Temple	
Wagner	
Philadelphia	

Coach: A. John Geraci (player)

\*\* Schedule Incomplete

## 1947-48

vs. Stevens	W	5-4
vs. Stevens	T	4-4
vs. Panzer	W	6-3
vs. Cooper Union	L	7-9
vs. Drew	W	5-4
vs. Drew	L	5-8
vs. Paterson Teachers	W	5-4
vs. Paterson Teachers	L	4-5
vs. Stevens	W	9-0
vs. Newark Bombers	T	8-8

Coach: Ben D'Armiento (player and captain)

\*\* Schedule Incomplete

## 1949-1950 (7-2)

12/17	at Stevens	L	9-18
1/7	at Lafayette	W	15-12
1/14	NEWARK RUTGERS	W	8-4

1/21	MONTCLAIR STATE	W	10-6
2/18	at Drew	L	11 ½- 15 ½
2/25	COOPER UNION	W	16 ½-10 ½
3/4	SAINT PETER'S	W	19-8
3/18	at Paterson State	W	16-11
3/25	JERSEY CITY STATE	W	

Coach: Pelegrino Ringi

## 1950-1951 (8-0)

12/16	vs. Newark Rutgers		
1/13	MONTCLAIR STATE	W	9-0
1/20	PACE	W	19-8
2/10	at Saint Peter's	W	20-7
2/17	PATERSON STATE T.C	W	17-10
2/24	LAFAYETTE	W	17-10
3/3	at Stevens	W	14-13
3/9	vs. Paterson State		
3/10	at Cooper Union	W	16-11
3/17	DREW	W	15-12
3/24	vs. Fordham		
3/31	N.C.E. Invitation Tournament		

Coach: Pelegrino Ringi

## 1951-1952 (8-1)

1/12	at Lafayette	W	16-11
1/19	FORDHAM	W	15-12
2/2	at Drew	W	15-12
2/16	NEWARK RUTGERS	W	18-9
2/23	SAINT PETER'S	W	17-10
3/1	STEVENS TECH	W	15-12
3/8	MONTCLAIR STATE	W	20-7
3/15	at Paterson State	L	13-14
3/22	Tournament		
3/29	COOPER UNION	W	17-10

Coach: Pelegrino Ringi

\*\* Schedule Incomplete

## 1952-1953 (7-1)

1/10	PATERSON STATE	W	17-10
1/31	vs. at Fordham	W	15-12
2/14	DREW	W	16-11
2/21	at Cooper Union	W	16-11
3/7	LAFAYETTE	W	16-11
3/21	at Stevens	W	14-13
3/28	vs. NEWARK RUTGERS	W	18-9
4/4	at Saint Peter's	L	13-14

Coach: Pelegrino Ringi

## 1953-1954 (7-1)

1/9	vs. Pace	W	16-11
1/30	vs. Fordham	W	16-11
2/13	vs. Drew	L	12-15
2/20	vs. Cooper Union	W	21-6



3/6	vs. Lafayette	W	16-11
3/13	vs. Newark Rutgers	W	15-12
3/20	vs. Stevens	W	15-12
3/27	vs. Saint Peter's	W	14-13

Coach: Paul Hausser

#### 1954-1955 (5-3)

vs. Yeshiva	L	12-15
vs. FDU	W	20-7
vs. Pace	W	16-11
vs. Drew	W	14-13
vs. Cooper Union	W	15-12
vs. St. Peter's	L	12-15
vs. Stevens	L	13-14
vs. Newark Rutgers	W	14-13

Coach: Paul Hausser

\*\* Schedule Incomplete

#### 1955-1956 (6-2)

vs. FDU	W	19-8
vs. Pace	W	17-10
vs. Yeshiva	L	13-14
vs. Drew	L	12-15
vs. Cooper Union	W	15-12
vs. St. Peter's	W	16-11
vs. Stevens	W	16-11
vs. Newark Rutgers	W	16-11

Coach: Paul Hausser

\*\* Schedule Incomplete

#### 1956-1957 (8-1)

vs. Brooklyn Poly	W	14-13
vs. Yeshiva	W	14-13
vs. FDU	W	21-6
vs. Cooper Union	W	20-7
vs. Drew	W	18-9
vs. St. Peter's	W	16-11
vs. Stevens	L	11-16
vs. Newark Rutgers	W	16-11
vs. Pace	W	18-9

Coach: Paul Hausser

\*\*Schedule Incomplete

#### 1957-1958 (5-2)

vs. Drew	W	15-12
vs. Pace	W	17-10
vs. FDU	W	20-7
vs. Brooklyn Poly	L	9-18
vs. Cooper Union	W	20-7
vs. St. Peter's	W	17-10
vs. Stevens	L	13-14

Coach: Paul Hausser

\*\* Schedule Incomplete

#### 1958-1959 (6-2)

vs. Pace	L	12-15
vs. Drew	W	14-13
vs. Saint Peter's	W	15-12
vs. FDU	W	15-12
vs. Cooper Union	W	18-9
vs. Newark-Rutgers	W	14-13
vs. Brooklyn Poly	W	15-12
vs. Stevens	L	10-17

Coach: Paul Hausser

\*\*Schedule Incomplete

#### 1959-1960 (8-2)

vs. Pace	W	14-13
vs. Paterson State	W	16-11
vs. Jersey City	W	23-4
vs. Drew	W	14-13
vs. Saint Peter's	W	Forfeit
vs. FDU	W	16-11
vs. Cooper Union	W	18-9
vs. Newark-Rutgers	W	14-13
vs. Brooklyn Poly	L	12-15
vs. Stevens	L	13-14

Coach: Paul Hausser

\*\* Schedule Incomplete

#### 1960-1961 (6-3)

vs. St. Peter's	W	14-13
vs. Jersey City	W	14-13
vs. Pace	cancelled	
vs. RIT	cancelled	
vs. Drew	W	14-13
vs. Cooper Union	cancelled	
vs. FDU	W	14-13
vs. Paterson State	W	15-12
vs. Newark Rutgers	L	11-16
vs. Brooklyn Poly	W	14-13
vs. Stevens	L	13-14

Coach: Paul Hausser

\*\*Schedule Incomplete

#### 1961-1962 (10-3)

vs. Saint Peter's	L	9-18
vs. Jersey City	W	16-11
vs. Seton Hall	W	16-11
vs. Temple	W	16-11
vs. Cooper Union	L	12-15
vs. Brooklyn Poly	W	17-10
vs. FDU	W	17-10
vs. Paterson State	W	18-9
vs. Newark Rutgers	L	13-14
vs. RIT	W	14-13



Ian Pershad

vs. Pace	W	15-12
vs. Drew	W	14-13
vs. Stevens	W	16-11

Coach: Paul Hausser

\*\*Schedule Incomplete

#### 1962-1963 (8-5)

vs. Jersey City	W	18-9
vs. Seton Hall	W	14-13
vs. Temple	W	14-13
vs. MIT	W	14-13
vs. Cooper Union	L	12-15
vs. Brooklyn Poly	W	14-13
vs. St. Peter's	L	12-15
vs. Paterson State	W	14-13
vs. Newark Rutgers	L	13-14
vs. RIT	W	15-12
vs. Pace	W	15-12
vs. Drew	L	13-14
vs. Stevens	L	13-14

Coach: Paul Hausser

\*Schedule Incomplete

# Men's Year-by-Year Results

## 1963-1964 (7-5)

vs. Jersey City	W	19-8
vs. Seton Hall	L	12-15
vs. Temple	W	15-12
vs. Pace	W	15-12
vs. RIT	cancelled	
vs. Paterson State	L	8-19
vs. Saint Peter's	W	14-13
vs. Stevens	W	16-11
vs. Brooklyn Poly	W	15-12
vs. MIT	L	13-14
vs. Newark Rutgers	W	15-12
vs. West Point	L	12-15
vs. Drew	L	11-16

Coach: Paul Hausser  
\*\*Schedule Incomplete

## 1964-1965 (6-5)

vs. Jersey City	L	13-14
vs. Temple	W	14-13
vs. Stevens	W	14-13
vs. Brooklyn Poly	L	13-14
vs. Saint Peter's	W	18-9

vs. Paterson State	L	13-14
vs. West Point	L	12-15
vs. Montclair State	W	20-7
vs. Newark Rutgers	L	10-17
vs. Seton Hall	W	17-10
vs. Drew	W	14-13

Coach: Paul Hausser  
\*\*Schedule Incomplete

## 1966-1967 (7-7)

vs. Seton Hall	L	12-15
vs. RIT	L	10-17
vs. Hobart	W	20-7
vs. Pace	L	11-16
vs. Temple	L	10-17
vs. Montclair State	W	18-9
vs. St. Peter's College	W	14-13
vs. Jersey City	W	15-12
vs. West Point	L	9-18
vs. Brooklyn Poly	L	11-20
vs. Stevens	L	11-16
vs. Newark Rutgers	W	15-12
vs. Paterson State	W	16-11
vs. Drew	W	16-11

Coach: Paul Hausser  
\*\*Schedule Incomplete

## 1967-1968 (7-6)

vs. Seton Hall	L	12-15
vs. Saint Peter's	W	18-9
vs. Penn State	W	15-12
vs. Temple	L	9-18
vs. Paterson State	W	14-13
vs. West Point	L	8-19
vs. Jersey City	W	19-8
vs. Montclair State	W	16-11
vs. RIT	W	16-11
vs. Stevens	L	12-15
vs. Newark Rutgers	L	14-13
vs. Brooklyn Poly	W	14-13
vs. Drew	L	10-17

Coach: Paul Hausser  
\*\*Schedule Incomplete

## 1968-1969 (8-3)

vs. Seton Hall	W	17-10
vs. Stevens	W	18-9
vs. West Point	L	11-16
vs. Temple	L	13-14
vs. Paterson State	W	15-12
vs. Jersey City	W	27-0
vs. Drew	W	20-7
vs. Montclair State	W	14-13

vs. Penn State	L	10-17
vs. Newark Rutgers	W	20-7
vs. Saint Peter's	W	18-9

Coach: Paul Hausser  
\*\*Schedule Incomplete

## 1969-1970 (7-6)

vs. Stevens	L	13-14
vs. Jersey City	W	25-2
vs. Temple	L	12-15
vs. Montclair State	L	6-21
vs. Paterson State	W	18-9
vs. Brooklyn	W	17-10
vs. Drew	W	17-10
vs. Penn State	L	9-18
vs. St. John's	L	12-15
vs. Hobart	W	19-8
vs. Newark Rutgers	W	15-12
vs. Seton Hall	L	12-15
vs. Saint Peter's	W	22-5

Coach: Paul Hausser  
\*\*Schedule Incomplete

## 1970-1971 (7-5)

vs. Jersey City	W	20-7
vs. Paterson State	W	15-12
vs. Temple	L	11-16
vs. Brooklyn	W	20-7
vs. Montclair State	L	9-18
vs. Drew	W	20-7
vs. Seton Hall	W	16-11
vs. Penn State	L	13-14
vs. St. John's	L	11-16
vs. Newark Rutgers	W	18-9
vs. Stevens	L	13-14
vs. Saint Peter's	W	18-9

Coach: Paul Hausser  
\*\*Schedule Incomplete

## 1971-1972 (10-2)

vs. Jersey City	W	20-7
vs. Temple	L	8-19
vs. Seton Hall	L	10-17
vs. Brooklyn	W	14-13
vs. Montclair State	W	14-13
vs. Drew	W	20-7
vs. Penn State	W	16-11
vs. Newark Rutgers	W	14-13
vs. William Paterson	W	15-12
vs. Stevens	W	15-12
vs. St. Peter's	W	17-10
vs. FDU-Madison	W	20-7

Coach: Paul Hausser



Mike Jurewicz

\*\*Schedule Incomplete

### 1972-1973 (7-7)

vs. Jersey City	W	20-7
vs. Pratt	W	15-12
vs. Temple	W	Forfeit
vs. Seton Hall	L	11-16
vs. Brooklyn	L	10-17
vs. Montclair State	L	12-15
vs. Drew	L	13-14
vs. Penn State	L	12-15
vs. Paterson	L	9-18
vs. Newark Rutgers	W	15-12
vs. Stevens	L	13-14
vs. Saint Peter's	W	16-11
vs. FDU-Madison	W	18-9
vs. CCM	W	20-7

Coach: Paul Hausser

\*\*Schedule Incomplete

### 1973-1974 (4-8)

vs. Jersey City	W	18-9
vs. Pratt	W	Forfeit
vs. Temple	L	9-18
vs. Seton Hall	L	10-17
vs. Montclair State	L	10-12
vs. Drew	L	12-15
vs. Penn State	L	6-21
vs. Paterson	L	12-15
vs. Newark Rutgers	L	11-16
vs. Stevens	L	11-16
vs. Saint Peter's	W	19-8
vs. FDU-Madison	W	18-4

Coach: Paul Hausser

\*\*Schedule Incomplete

### 1974-1975 (6-6)

vs. Jersey City	W	15-12
vs. Temple	L	12-15
vs. Seton Hall	L	8-19
vs. Kean	W	Forfeit
vs. Montclair State	L	13-14
vs. Drew	W	17-10
vs. Pratt	W	14-13
vs. Penn State	L	6-21
vs. Newark Rutgers	L	13-13
(Fence off 3-0)		
vs. Stevens	L	13-14
vs. William Paterson	cancelled	
vs. St. Peter's	W	20-7
vs. FDU-Madison	W	Forfeit

Coach: Paul Hausser

\*\*Schedule Incomplete

### 1975-1976 (3-8)

1/17	at Temple	L	9-18
1/21	at Seton Hall	L	5-22
1/24	KEAN	W	Forfeit
1/28	at Montclair State	W	16-11
1/31	DREW	L	6-21
2/4	at Pratt	W	Forfeit
2/7	at Penn State		cancelled
2/11	WILLIAM PATERSON	L	4-23
2/14	at Newark Rutgers	L	8-19
2/18	STEVENS	L	4-23
2/21	at Jersey City	L	7-20
2/25	SAINT PETER'S	L	10-17
2/28	CCNY		cancelled

Coach: Paul Hausser

\*\*Schedule Incomplete

### 1976-1977 (6-6)

vs. Temple	W	Forfeit
vs. Seton Hall	L	5-22
vs. Haverford	W	15-12
vs. UMBC	W	14-13
vs. Montclair State	W	16-11
vs. Drew	L	10-17
vs. William Paterson	L	9-18
vs. Rutgers-Newark	L	11-16
vs. Stevens	L	11-16
vs. Jersey City	W	18-9
vs. Saint Peter's	W	19-8
vs. CCNY	L	7-20

Coach: Paul Hausser

\*\*Schedule Incomplete

### 1977-1978 (5-4)

vs. Temple	L	12-17
vs. Seton Hall	L	12-15
vs. Haverford		cancelled
vs. UMBC		cancelled
vs. Montclair State	W	22-5
vs. Drew	W	15-12
vs. William Paterson		cancelled
vs. Newark Rutgers	W	18-9
vs. Stevens	L	10-17
vs. Jersey City	W	17-12
vs. Saint Peter's	W	19-8
vs. CCNY	L	13-14

Coach: Paul Hausser

\*\*Schedule Incomplete

### 1979-1980 (5-6)

vs. Temple	L	8-19
vs. Seton Hall	W	16-11
vs. Haverford	W	16-11
vs. Muhlenberg	L	11-16
vs. Drew	W	15-12
vs. Paterson	L	9-18
vs. Newark Rutgers	L	13-14
vs. Stevens	L	13-14
vs. Jersey City	W	Forfeit
vs. Saint Peter's	W	18-9
vs. CCNY	L	8-19

Coach: Paul Hausser

\*\*Schedule Incomplete

### 1980-1981 (5-5)

vs. Temple	L	8-19
vs. Seton Hall	W	14-13
vs. Saint Peter's	W	15-12
vs. NYU Poly	W	17-10
vs. Drew	L	13-14
vs. Newark Rutgers	L	10-17
vs. William Paterson	L	8-19
vs. Jersey City	W	4-3
vs. Stevens	L	10-17
vs. CCNY		cancelled
vs. Yeshiva	W	18-9

Coach: Paul Hausser

\*\*Schedule Incomplete

### 1981-1982 (5-7)

vs. Temple	L	12-15
vs. George Mason	W	Forfeit
vs. Seton Hall	L	13-14
vs. Johns Hopkins	L	12-15
vs. Drew	L	11-16
vs. Newark-Rutgers	L	11-16
vs. William Paterson	L	7-20
vs. Saint Peter's	W	14-13
vs. Haverford	L	10-17
vs. Lafayette	W	14-13
vs. Yeshiva	W	19-8
vs. Stevens	W	14-13
vs. NYU Poly		cancelled
vs. Jersey City		cancelled

Coach: Paul Hausser

\*\*Schedule Incomplete



## Men's Year-by-Year Results

2005-2006 (0-8)				2007-2008 (1-13)				2009-2010 (9-10)			
11/13	SACRED HEART	L	2-25	<i>Stevens Invitational</i>				2/8	LAFAYETTE	L	9-18
	Stevens Invitational			12/2	vs. Yeshiva	L	12-15	2/8	HUNTER	L	11-16
11/20	vs. Johns Hopkins	L	2-25	12/2	vs. Hunter	L	8-14	2/8	DREW	L	5-22
11/20	vs. Yeshiva	L	6-21	12/2	at Stevens	L	7-20	2/22	MACFA Conference Tournament		
11/20	at Stevens	L	3-24	12/2	vs. Johns Hopkins	L	1-26	3/7	NCAA Regionals		
11/20	vs. Hunter	L	7-20	12/9	vs. Yeshiva (at Sacred Heart)W		16-11	Coach: Yefim Litvan			
	Johns Hopkins Invitational			12/9	at Sacred Heart			2009-2010 (9-10)			
1/29	vs. Virginia Tech	L	3-24	<i>Johns Hopkins Invitational</i>				<i>Drew Invitational</i>			
1/29	vs. Virginia	L	6-21	1/27	vs. William & Mary			11/14	at Drew	W	15-12
1/29	vs. William & Mary	L	3-24	1/27	vs. Maryland	L	4-23	11/14	vs. Maryland	W	23-4
1/29	at Johns Hopkins	postponed		1/27	vs. Virginia	L	11-16	11/14	vs. Lafayette	W	17-10
2/5	at Sacred Heart	postponed		1/27	vs. Virginia Tech	L	8-19	11/14	vs. Stevens	L	10-17
2/12	CORNELL	postponed		1/27	vs. St. John's (MD)	L	11-16	11/14	vs. Rutgers	L	10-17
2/12	DREW	postponed		1/27	vs. North Carolina	L	1-26	11/14	vs. St. John's (MD)	W	23-3
2/12	LAFAYETTE	postponed		2/10	HAVERFORD	L	1-26	12/4-6	North American Cup		
2/12	ARMY	postponed		2/10	CORNELL	L	8-19	1/9	at Penn	L	7-20
2/12	HAVERFORD	postponed		2/10	ARMY	L	6-21	<i>Philadelphia Invitational (at UPenn)</i>			
2/19	ARMY			2/10	LAFAYETTE	L	12-15	1/9	vs. Sacred Heart	L	6-21
2/19	HAVERFORD			2/10	DREW			1/9	vs. Duke	L	5-22
2/19	DREW			2/21	PRINCETON			1/9	vs. North Carolina	L	6-21
2/19	CORNELL			Coach: Yefim Litvan				<i>West Point Invitational</i>			
2/19	LAFAYETTE	L	2-25	**Schedule Incomplete				1/23	Hunter	W	21-6
Coach: Mac Shaker				2008-2009 (6-18)				1/23	at Army	W	14-13
**Schedule Incomplete				<i>Haverford Invitational</i>				1/23	vs. Clemson	L	13-14
2006-2007 (1-15)				11/9	at Haverford	L	3-24	2/7	vs. Stevens (at Princeton)L		8-19
<i>Stevens Invitational</i>				11/9	vs. North Carolina	L	3-24	2/7	at Princeton	L	2-25
11/19	vs. Hunter	W	14-13	11/9	vs. William & Mary	L	10-17	2/13	MACFA Multi Meet A vs. C		
11/19	vs. Yeshiva	L	7-20	11/9	vs. Virginia	W	18-9	2/21	HAVERFORD	L	10-17
11/19	at Stevens	L	1-26	11/9	vs. Virginia Tech	W	19-8	2/21	WILLIAM & MARY	W	14-13
<i>Army Invitational</i>				11/9	vs. Johns Hopkins	L	5-22	2/21	VIRGINIA	W	21-6
1/21	vs. Stony Brook	L	2-25	<i>UPenn Invitational</i>				2/21	VIRGINIA TECH	W	18-9
1/21	at Army	L	2-25	1/11	at Penn	L	0-27	2/28	MACFA Championships		
1/21	vs. Hunter	L	5-22	1/11	vs. Duke	L	1-26	Coach: Yefim Litvan			
<i>Johns Hopkins Invitational</i>				1/11	vs. UNC	L	4-23	2010-2011 (3-1)			
1/28	vs. Virginia Tech	L	10-17	1/11	vs. Drew	L	5-22	10/15-17	North American Cup		
1/28	vs. Virginia	L	11-14	1/11	vs. Sacred Heart	L	9-18	11/7/13	Temple Open		
1/28	vs. William & Mary	L	0-27	1/18	at Army Invitational			<i>Drew Invitational</i>			
1/28	vs. Maryland	L	5-22	<i>Sacred Heart Invitational</i>				11/21	vs. Maryland	W	18-9
1/28	vs. St. John's (MD)	L	6-21	1/25	at Sacred Heart	L	1-26	1/21	vs. Hunter	W	18-9
2/11	HAVERFORD**	L	0-27	1/25	vs. Yeshiva	W	16-11	11/21	vs. Rutgers	L	13-14
2/11	ARMY**	L	2-25	1/25	vs. New Haven	W	18-9	11/21	at Drew	W	15-12
2/11	LAFAYETTE**	L	6-21	<i>Stevens Invitational</i>				1/22	Penn Invitational		
2/11	CORNELL**	L	2-25	2/1	at Stevens	L	4-23	1/30	Stevens Invitational (C vs. A)		
2/11	DREW**	L	1-26	2/1	vs. Cornell	L	5-22	2/13	MACFA (Round Robin)		
3/4	vs. Hunter (at Drew)	postponed		2/1	vs. Army	L	6-21	3/6	MACFA Championship		
Coach: Janusz Mlynec				2/1	vs. Stony Brook	W	14-13	(at William & Mary)			
** Home games played in Maplewood, NJ				2/8	ST. JOHN'S (MD)	W	17-4	3/12	NCAA Regional (at Drew)		
				2/8	MARYLAND	L	10-17	Coach: Yefim Litvan			
				2/8	RUTGERS	L	7-20				

**2011-2012 (6-12)**

11/20	ARMY	L	10-17
11/20	STEVENS	L	12-15
11/20	HUNTER	W	17-10
11/20	YESHIVA	W	20-7

12/2-12/4NAC Open

*UPenn Invitational*

1/22	vs. Drew	L	10-17
1/22	vs. Johns Hopkins	L	10-17
1/22	at UPenn	L	8-19
1/22	vs. Duke	L	2-25
1/22	vs. Sacred Heart	L	4-23
1/22	vs. North Carolina	W	14-13

*Stevens Invitational*

1/29	vs. Maryland	W	15-12
1/29	vs. Johns Hopkins	L	5-22
1/29	vs. Virginia	W	16-11
1/29	vs. William & Mary	L	11-16
2/11	HAVERFORD	L	9-18

*Drew Invitational*

2/12	vs. Lafayette	W	15-12
2/12	vs. Rutgers	L	12-15
2/12	vs. Cornell	L	10-17
3/4	MACFA Championships		

Coach: Yefim Litvan

**2012-2013 (8-12)**

11/12 North American Cup

*Haverford Invitational*

11/17	vs. Johns Hopkins	L	8-19
11/17	at Haverford	L	12-15
11/17	vs. William & Mary	W	17-10
11/17	vs. Maryland	W	15-12
11/17	vs. Virginia	W	18-9

*Lafayette Invitational*

11/18	at Lafayette	W	14-13
11/18	vs. Drew	L	13-14
11/18	vs. Rutgers	W	16-11
11/18	vs. Cornell	W	14-13
11/30	at Columbia	L	10-17
11/30	vs. Stevens (at Columbia)	L	12-15
1/13	MACFA – B vs. C (at Stevens)		

*Temple Invitational*

1/26	vs. Duke	L	6-21
1/26	vs. Haverford	L	7-20
1/26	vs. North Carolina	L	7-20
1/26	vs. UPenn	L	6-21
1/26	vs. Sacred Heart	L	4-23

*Stevens Invitational*

2/10	vs. Hunter	W	17-10
2/10	vs. Army	L	11-16

2/10 at Stevens L 11-16

2/10 vs. Yeshiva W 23-4

3/3 MACFA Championships (at Maryland)

3/9 NCAA Regionals (at Lafayette)

Coach: Yefim Litvan

**2013-2014 (6-16)**

11/8-20 North American Cup (D1 &amp; Junior)

*Columbia Invitational*

11/22	vs. Stevens	L	7-10
11/22	vs. Princeton	L	3-24
11/22	at Columbia	L	3-24

*MACEA B vs. C (at Johns Hopkins)*

11/24	vs. Virginia	W	19-8
11/24	vs. Maryland	W	17-10
11/24	vs. William & Mary	W	17-10
11/24	at Johns Hopkins	L	7-20
11/24	vs. Navy	L	13-14

1/11 Alumni Meet

1/25 Penn Invitational

*2014 Eric Sollee Invitational**at Brandeis University*

2/1	vs. Brown	L	11-16
2/1	vs. Stevens	L	9-18
2/1	at Brandeis	L	6-21
2/1	vs. Boston College	L	12-15
2/1	vs. Haverford	L	11-16
2/1	vs. MIT	L	7-20

*MACEA B Round Robin (at Stevens)*

2/9	vs. Yeshiva	W	16-11
2/9	vs. Army	L	13-14
2/9	at Stevens	L	11-16
2/9	vs. Hunter	L	13-14

*NJIT Invitational*

2/16	DREW	W	17-10
2/16	LAFAYETTE	L	11-16
2/16	RUTGERS	W	16-11
2/16	CORNELL	L	13-14

3/2 MACFA Championships (at Army)

5th out of 14 teams

3/8 NCAA Regional Championships  
(at Lafayette)3/22-23 NCAA Division I Fencing  
Championships (at Ohio State)

Coach: Yefim Litvan

**David Kong**

# Men's All-Time Roster

(First season: 1935-36; complete thru 2013-2014)

## A

ACOCCELLA, Norm 58  
ALAI, John 54, 55  
ALBANESE, Emil 49, 50, 51  
ALDOVER, Christian 10, 11, 12, 13, 14  
ALVARADO, Patrick 07, 08, 09  
AMOS, Doug 53  
AN, Peter 81  
ANDERSON, Art 59, 60  
ANDERSON, George 70, 71, 72, 73  
ANDERSON, Greg 72, 73, 74  
ANDREOLI, Aldo 55  
APPLEBAUGH, Robert 53, 54

## B

BALLISTER, Ronald 68, 69  
BANTA, R. 42  
BARCELONA, Vin 72, 73, 74, 75  
BARENSIRCHER, K. 54  
BARTH, Roland 58, 59, 60  
BARTHA, Mike 70, 71, 75  
BEATTIE, John 71, 72, 73, 74  
BEBEE, D. 60, 61, 62  
BEM, Ed 74, 75  
BENAMY, Phil 78  
BERG, Charles 55, 56  
BESADA, Peter 09, 10, 11, 12  
BIONDO, Greg 09, 10, 11, 12  
BIRD, R. 50, 51  
BLOOM, Phil 57, 58, 59, 60  
BORNAKO, Greg 67, 68, 69, 70  
BOSCHI, J. 59  
BOWLES, Larry 55  
BOWSER, Hamilton 49, 50, 51, 52  
BOWSER, Robert 52, 54, 55, 57, 58  
BRADFORD, Nevin 37, 40  
BRILLANT, Phil 08, 09  
BROWN, Art 68  
BROWN, Steve 67  
BROWN, William 68, 69, 70, 71  
BRUMMER, Harry 53  
BUELL, Jim 53, 54  
BUNTIN, E. 54  
BURTIS, Don 61, 62, 63, 64  
BYRNE, Ed 62, 63, 64, 65

## C

CAIRNS, Wally 53  
CAPRIO, Michael 09  
CARR, Dylan 10, 11, 12, 13  
CHIN, Gilbert 82  
CICAK, Peter 63, 64, 65  
CILLI, Lenny 73, 74, 75, 76, 77  
CLUNE, Patrick 92  
COLUCCI, Steve 79, 80, 81, 82  
CONSTANTIN, Ian 13, 14  
CONTRETAS, Andy 06  
CORBO, Nick 61  
CRAIG, Hugh 46  
CRESPO, Jose 79  
CRIMMINS, Dave 49, 50, 51, 52  
CRITTENDEN, Richard 51  
CURTIS, Ronald 68, 69

## D

D'ADDARIO, R. 50, 51  
D'ARMIENTO, Ben 46, 47, 48, 49  
D'EMIDIO, Vinnie 70, 71, 72, 73  
DANIEL, Justin 10  
DAVIS, Michael 08  
DAVIS, William 76, 77, 78  
DAVISON, George 52, 53, 54  
DAY, Jeff 92  
DECKER, Don 66  
DEGUIA, Paolo 07  
DEMBECKS, Andrew 60, 61, 62, 63  
DENCH, John 46  
DENNEY, William 68, 69  
DENNING, Tony 39, 40  
DEROSA, James 07  
DEVALVE, Dan 08  
DEVENJO, Matthew 09, 10, 11, 12  
DEVITO, Enzo 66, 67  
DEVITO, Louis 57, 58, 59, 60  
DISHUK, Gary 07, 08  
DOLID, Paul 49  
DORNBUSH, Bernie 61, 62  
DOUGHERTY, Warren 66, 67, 68, 69  
DOW, Robert 68  
DOWNEY, Matt 14  
DRABINIS, Al 62, 63, 64  
DUNCAN, Jeff 60, 61, 62  
DURBAK, Demetro 57, 58, 59, 60

## E

ELGRAM, Roger 64, 65  
ERDREICH, John 62, 63, 64, 65

## F

FECHER, George 55, 56  
FENNAR, Miya 80, 81  
FERNANDEZ, Dennis 68, 69  
FORMAN, Shemley 07  
FOSTER, John 38  
FRANK, George 69, 70  
FREE, Joe 56, 57  
FUCHS, Brian 80, 81, 82

## G

GARABRANT, Gary 62, 63, 64  
GARDNER, John 69, 70, 71  
GARRETSON, Craig 92  
GERACI, A. John 39, 40, 41, 42  
GERBER, Lawrence M. 46  
GILBERT, S. 60  
GIORDANO, Lou 59, 60  
GLATT, Marvin 64  
GO, Lennart 07  
GOVEL, Edward 46, 47  
GRABER, William 06  
GREEN, Harry 58  
GROSS, Bernard 47  
GULINO, Frank 82  
GUSTIFSON, Paul 61

## H

HAASE, Jay 72, 73, 74, 75  
HAASE, John 69, 70, 71, 72  
HALLAS, Pete 70  
HAMFELDT, Michael 09, 10, 11, 12  
HAMILTON, William 37, 40  
HARGIS, James, I. 47  
HARRISON, Bill 38, 39, 40, 41  
HARWOOD, Robert 62, 63  
HASCUP, Bruce 68, 69, 70, 71  
HATCHMAN, Harry 47  
HATKE, David 10, 11, 12  
HAUER, Gabe 71, 72, 73  
HAY, Oscar 74, 75, 76  
HE, Edward 11, 12, 13, 14  
HEISLER, Ron 81  
HELLMAR, R. 50



HELLSTROM, Edward C. 46  
HERRERA, Fabian 92  
HIGGINS, William 68  
HOFFMAN, George 60, 61, 62, 63  
HOWES, Richard P. 46  
HRAPSKY, Ryan 14  
HUNTER, Aaron 92  
HURLEY, John 75, 76  
HVIZDAK, Zachary 08, 09, 10, 11

## I

ILG, Carl 57  
IPPOLITO, Mark 66  
ISCHER, Valentin 10  
IVASKA, Tony 53

## J

JACOBS, Joe 66, 67  
JAKOSITZ, Jack 55  
JANIEC, Kris 07  
JAREA, J. 59  
JAREZ, J.  
JAVIER, Joe 92  
JEAN, Gerard "Jerry" 62, 63, 64, 65  
JENSEN, Chris 37, 38, 40  
JONES, Roger 36, 37  
JONKER, Dan 47  
JUINTA, Tom 52, 53, 54  
JUREWICZ, Mike 14

## K

KARAMANOL, Stan 64, 65, 66  
KEESSEE, Don 56, 57, 58  
KELLERS, Al 60, 61  
KILLY, Bruce 64, 65, 66, 67  
KIRK, Andrew 08, 09, 10, 11  
KISS, John 81, 82  
KLAPHOLZ, Dave 76  
KLAPPHOLZ, Leon 47, 48, 49  
KLAUSNER, Sheldon 46  
KONCHALSKI, Michael 06  
KONG, David 14  
KORRY, Henry 68, 69, 70  
KOSVIC, Tom 60, 61, 62, 63  
KRAM, William 52, 53, 54  
KRONSEDER, John 37, 38, 39, 40  
KUM, Steven 07  
KURZEJA, Stan 51, 52, 53, 54

## L

LA RUE, Charles 56  
LAGANELLA, Larry 51, 53  
LANDELLS, James 64  
LANTERI, Guillaume 12, 13  
LARUSSO, Tom 59, 60, 61, 62, 63  
LAWLESS, William 58  
LAWRENCE, Devis 74, 75  
LAYENDECKER, Richard 68, 69, 70, 71  
LENK, Paul 52, 53, 54  
LERNER, Richard 64  
LEVIN, Harvey 64, 65, 66  
LEVY, Harvey 46  
LOGANELLA 52  
LOPES, Robert 76, 77  
LORENZ, Paul 07, 08, 09  
LUBAS, Mike 80  
LUCK, Felex E. 46  
LUTKENHOUSE, Nick 10  
LYNCH, Robert 77, 78, 79, 80

## M

MAHON, D. 59, 60  
MALETTA, Tony 46  
MALLON, Harry 37, 40  
MARKOSIAN, Varooshn 37, 38, 39, 40  
MARREN, Rich 76  
MARSH, Gary 70, 71, 72, 73  
MARTINEZ, George 67, 68, 69, 70  
MATE 49  
MATONTI, Gus 35  
MCCLAUD, Glen 74  
MCDERMOTT, Max 10, 11, 12, 13  
MCDONALD, John 67  
MEDDLES, Ed 68  
MEEHAN, Steve 81, 82  
MENDOZA, Pedro 75, 76, 77  
MENJIVAR, Mario 06  
MENKES, Bernie 47  
MESSINA, Peter 69, 70, 71, 72  
MESSING, Louis R. 46  
MICHEL, John 78, 79, 80  
MICHEL, Ron 55, 57, 58  
MILLER, Maxwell 14  
MISHRA, Shivank 14  
MITCHELL, William 60, 61, 62, 63  
MOISEENKO, Oleg 64, 65, 66, 67  
MORSE, Mike 67, 68, 69

MOREHOUSE, Don 53  
MOY, Ken 72, 73, 75, 76  
MUI, SK 73, 74  
MULSHINE, Tom 62

## N

NAPOLITANO, Pat 56, 57  
NARCAVAGE, George 63  
NELSON, Mike 63, 64, 65, 66  
NICHOLLS, Ronald 55, 56, 57  
NICOLAY, Edward P. 46  
NICOLAY, Herbert A. 46  
NIZNAN, Neil 77  
NOCTOR, Jim 77  
NORDFORS, Edgar 46, 47  
NORDMAN, Eberhardt 54, 55, 56, 57  
NORDMAN, Otto 54, 55, 56, 57  
NUCCI, L. 40, 42

## O

O'BRIEN, Chuck 81, 82  
O'BRIEN, Ed 79, 80  
O'REILLY, Robert 78, 79  
OLIVER, Eric 09

## P

PANCOAST, Andrew 06  
PANG, Ronald 77, 78, 80, 81  
PARR, Ben 55, 56  
PARSONS 51  
PATTEN, Tom 76, 77, 78, 79  
PERRY, Alan 56, 57, 58, 59, 60  
PERSHAD, Ian 12, 13, 14  
PETROSKY, Walter 39, 40, 41  
PICCININNO, Lou 58  
PINTERICH, Steve 65, 66  
PITT, Walter 37, 40  
POLIS, Dan 53, 54, 55  
POLIZZI, Emanuel 64, 65, 66, 67  
POTOCZNICK, George 63, 64, 65, 66, 67  
POTOCZNIAC, Joe 66, 67  
PRICE, Don 56  
PRINCE, Elio 55, 57  
PRUESSE, Carl 56, 57, 58, 59  
PURCELL, Vinnie 49, 50, 51

# Men's All-Time Roster

(First season: 1935-36; complete thru 2013-2014)



Ian Constantin

## R

RAMJATTAN, Amrit 08, 09  
RANSINANGUE, Bryan 11, 12, 13, 14  
RENNER, Jack 38, 39, 40  
RENNER, R. 37, 40  
RENVER, John 37, 38  
REYNOLDS, Thomas 06  
RODRIGUES, David 06  
RODRIGUEZ, Dan 82  
ROSENFELD, Rudy 64, 65, 66, 67  
ROSENZWEIG, Robert 64, 65, 66  
ROSSI, Tony 74  
ROTOLLO, Victor 49, 50  
RUOFF, Jeff 66

## S

SADOWSKI, Alex 13, 14  
SAHAFAIE, Mohammud 92  
SANCHEZ, Rufo 40, 42  
SAYRE, William 38, 39  
SCALRGA, Frank 47  
SCHAEFER, Walt 56, 57  
SCHENCK, Elwood 37, 40  
SCHNEIDER, Jerry 62, 63

SCHULMAN, I. 59  
SELLS, Tyler 08, 09  
SHEEHY, George 71  
SHEN, Ray 79, 80  
SIMKINS 69  
SINNOT, Dan 53  
SKIDMORE, Ritchie 42  
SKUCAS, John 55, 56, 57, 58  
SLIZZA, Dick 56, 57, 58  
SMITH, Jim 66  
SORGI, Tony 09, 10, 11, 12  
SORIANO, Greg 69, 70, 71, 72  
SPENGLER, Keith 06  
SPICER, Ron 61  
SPIESBACH, Gerry 72, 73, 74, 75, 76  
SPINA, John 62, 63, 64, 66, 67  
STAVINSKI, D. 54  
STEMMER, Jay 58  
STILLWAGGON, Jack 38, 39, 40, 41  
STUMPFL, Ed 56  
SULLIVAN, Jim 50, 51, 52, 53  
SZELUGA, Robert 77, 78, 79

## T

TAESTZCHE, Bill 49, 50, 51, 52  
TAESTZCHE, Bob 49, 50, 51, 52  
TANI, Rob 06, 07, 08  
TENGWELL, Ed 81  
TERNINKO, Jack 59, 60, 61  
TESLENKO, Lenny 66, 67, 68  
TINKHAM, Robert 64, 65  
TOBANKIN, Harry 50, 51, 52, 53  
TOGONON, Alvin 06, 07  
TOGONON, Carlo 06, 07  
TRUONG, Andrew 13, 14

## U

UNGARDO, Tony 70  
UNGER, Bill 75  
URBANNECK, George 67, 68

## V

VACHINO, Ray 52, 53  
VALENTE, Nick 69, 70  
VAN DENBURGH, Leland 37, 38, 40  
VANARELLI, J. 47  
VANDERSCHANS, P. 47  
VANSPLINTER, Peter 59, 60

VASELLI, John 69, 70, 71, 72  
VASQUES, Javier 07, 08  
VAVARI, Bashir 80  
VELESE, Jose 66, 67, 68  
VERMIGGIN, Tony 72  
VOGEL, Robert 62, 64, 65

## W

WARSHAW, Herman E. 46  
WEATE, Mike 82  
WEINREB, Marius 54, 55, 56  
WELTMER, George 62  
WESSNER, 76, 77, 78  
WESTON, Greg 92  
WHALEN, Mike 82  
WIEGLEB, Ernest 46  
WILL, Tom 67  
WISE, L. 59  
WOLFE, Tom 80, 81  
WOLFENDEN, Dan 12, 13  
WOLFSON, Steve 92  
WYCKOFF, Norman 34  
WYROUGH, W. 42  
WYSZKOWSKI, Edward P. 46, 47

## Y

YOUNG, Rolan 92  
YUSEM, Quinn 10

## Z

ZIEMSKI, Gary 77  
ZIVARI, Bashir 80

*Records are incomplete. Please e-mail  
pillari@njit.edu with any additions or  
corrections.*



# Women's Year-by-Year Results

## 2005-06 (0-7)

11/13	at Sacred Heart	L	9-18
11/20	at Stevens Tech	L	3-24
11/20	vs. Yeshiva (at Stevens Tech)	L	9-18
11/20	vs. Hunter (at Stevens Tech)		
11/20	vs. Johns Hopkins (at Stevens Tech)		
1/21	vs. Drew (at Baltimore, MD)	L	1-26
1/21	vs. Cornell (at Baltimore, MD)	L	1-26
1/21	vs. Penn (at Baltimore, MD)	L	0-27
1/21	vs. Northwestern (at Baltimore, MD)	L	0-27
2/5	vs. Fairleigh Dickinson (at Philadelphia)		
2/5	vs. James Madison (at Philadelphia)		
2/5	vs. Stevens Tech (at Philadelphia)		
2/5	vs. Hunter (at Philadelphia)		
2/10	at Drew		
2/11	DREW		
2/19	HAVERFORD		
2/19	LAFAYETTE		
2/19	DREW		
2/19	ARMY		
2/19	CORNELL		

Coach: Mac Shaker

\*\*Schedule Incomplete

## 2006-07 (0-10)

12/3			
1/21	vs. Fairleigh Dickinson (at West Point)	L	1-26
1/21	at Army	L	3-24
1/21	vs. Hunter (at West Point)	L	3-24
2/4	vs. Fairleigh Dickinson (at Philadelphia, PA)	L	3-24
2/4	vs. Johns Hopkins (at Philadelphia, PA)	L	1-26
2/4	vs. Army (at Philadelphia, PA)	L	2-25
2/4	vs. Stevens Tech (at Philadelphia, PA)	L	2-25
2/10	at Drew	L	2-25
2/10	vs. Temple (at Drew)	L	2-25
2/10	vs. Fairleigh Dickinson (at Drew)	L	2-25
3/3	(at Smith College)		

Coach: Janusz Mlynck

\*\*Schedule Incomplete

## 2007-08 (0-1)

12/2	(at Jersey City, NJ)		
12/9	vs. Yeshiva (at Sacred Heart)	L	0-9
12/9	at Sacred Heart		
1/20	vs. Stevens Tech (at Army)		
1/27	at Johns Hopkins		
2/23	(at Hunter)		

Coach: Yefim Litvan

\*\*Schedule Incomplete

## 2008-09 (0-3-1)

12/4	QUEENS	T	9-9
12/7	NIWFA Christmas Tournament (at Jersey City, NJ)		
1/18	at Army Invitational		
1/25	at Sacred Heart	L	2-25
1/25	vs. New Haven (at Fairfield, CT)	L	4-23
1/25	vs. Yeshiva (at Fairfield, CT)	L	8-19
3/7	NCAA Regionals		
3/8	NCAA Regionals		
3/19	NCAA Finals		

Coach: Yefim Litvan

## 2009-10 (1-16)

11/14	at Drew	L	12-15
11/14	vs. Maryland (at Drew)	W	13-9
11/14	vs. Rutgers (at Drew)	L	5-11
12/1	QUEENS	L	11-16
12/6	NIWFA Christmas Tournament		
1/9	vs. Drew (at Penn)	L	13-14
1/9-10	vs. Sacred Heart (at Penn)	L	5-22
1/9	vs. Fairleigh Dickinson (at Penn)	L	10-17
1/9	vs. North Carolina vs Penn	L	4-23
1/23	vs. Clemson (at Army)	L	7-14
1/23	at Army	L	10-17
1/23	vs. Hunter (at Army)	L	8-19
1/23	vs. CCNY (at Army)	L	8-17
1/23	vs. Stevens Tech (at Army)	L	6-21
2/7	vs. Fairleigh Dickinson (at Princeton)	L	9-18
2/7	vs. Stevens Tech (at Princeton)	L	6-21
2/7	at Princeton	L	1-26
3/6	NIWFA Championships		
3/13	NCAA Regionals		

Coach: Yefim Litvan

\*\*Schedule Incomplete

## 2010-11 (2-1)

10/15-17	North American Cup		
11/21	vs. Maryland (at Drew Invitational)	W	16-11
11/21	vs. Drew (at Drew Invitational)	W	15-12
11/21	vs. Rutgers (at Drew Invitational)	L	7-17
12/2	QUEENS	cancelled	
12/5	NIFWA Christmas Invitational (at Cobra Fencing Club)		
1/22-23	Philadelphia Invitational (at Temple)		
2/13	Stevens Invitational		
3/12	NCAA Regionals		

Coach: Yefim Litvan

## 2011-12 (3-6)

11/20	FAIRLEIGH DICKINSON	W	14-13
11/20	HUNTER	W	20-7
12/4	NIWFA Christmas Invitational (at Cobra Fencing Club)		
1/21	vs. Drew (at UPenn)	W	17-10
1/21	vs. Duke (at UPenn)	L	4-23
1/21	vs. Cornell (at UPenn)	L	3-24
1/21	vs. Northwestern (at UPenn)	L	4-23
1/21	at Penn	L	6-21
2/11	HAVERFORD		
2/12	vs. Lafayette (at Drew)	L	12-15
2/12	vs. Rutgers (at Drew)	L	13-14
3/3	NIFWA Championships		
3/10	NCAA Regional (at Lafayette)		

Coach: Yefim Litvan

## 2012-13 (6-10)

11/9-12	North American Cup Haverford Invitational (at Haverford)		
11/17	at Haverford	L	8-19
11/17	vs. Johns Hopkins	L	5-22
11/17	vs. Maryland	W	15-12
11/17	vs. William & Mary	W	14-13
11/17	vs. Virginia	L	13-14
	Lafayette Invitational (at Lafayette)		
11/18	at Lafayette	W	14-13
11/18	vs. Yeshiva	W	16-11
11/18	vs. Drew	L	11-16
11/18	vs. Rutgers	L	9-18
	Columbia Invitational (at Columbia)		
11/30	at Columbia	L	2-25
11/30	vs. Tufts	W	15-12
12/2	NIFWA Christmas Invitational Penn Invitational (at Temple)		
1/26	vs. Haverford	L	8-19
1/26	vs. Johns Hopkins	L	6-21
1/26	vs. North Carolina	L	8-19
1/26	vs. Duke	L	5-22
2/9	NJIT Invitational		
2/15	at The City College of New York	W	14-13
3/2	NIWFA Championships (at Swarthmore)		
3/9	NCAA Regional (at Lafayette)		

Coach: Yefim Litvan

background: Alessandra Rodrigues



# Women's All-Time Roster

## 2013-14 (5-14)

11/8-11 North American Cup (D1 & Junior)

*Columbia Invitational (at Columbia)*

11/22 at Columbia L 3-24

11/22 vs. Princeton L 0-27

*John Hopkins Invitational (at Johns Hopkins)*

11/24 at Johns Hopkins L 6-21

11/24 vs. Army W 15-12

11/24 vs. Yeshiva W 25-2

11/24 vs. Virginia W 16-11

11/24 vs. Navy L 13-14

12/8 NIWFA Christmas Invitational  
(at Rutgers)

1/11 Alumnae Day

1/26 Philadelphia Invitational (at Penn)

*2014 Eric Sollee Invitational (at Brandis University)*

2/1 at Brandis L 5-22

2/1 vs. Boston College L 5-22

2/1 vs. Brown L 3-24

2/1 vs. Haverford L 7-20

2/1 vs. MIT L 7-20

2/1 vs. Stevens L 7-20

*NJIT Invitational*

2/16 QUEENS W 22-5

2/16 FAIRLEIGH DICKINSON L 8-19

2/16 LAFAYETTE L 13-14

2/16 RUTGERS L 11-16

2/16 ARMY W 17-10

2/20 FAIRLEIGH DICKINSON L 12-15

3/1 NIWFA Championships (at Army)

3/8 NCAA Regional Championships  
(at Lafayette)

*Coach: Yefim Litvan*

## A

ALADE, Opeyemi 12, 13, 14

AMAECHI, Felicia 05, 06, 07

ANZAR, Ana 91

ARONOV, Julia 12, 13, 14

## B

BAILEY, Linda 02

BANDEIRA, Carla 97, 98, 99

BAZILE, Abigail 13, 14

BOCHNIEWICZ, Elaine 01

BOJARSKI, Judy

## C

CAMARGO, Andrea 10, 11, 13, 14

CHOU, Ashley 04

CHRISTIAN, Margaret 13, 14

CILENTO, Karen 10, 11

CONNERAN, Maria 10, 11

COOPER, Crystal 01, 04

## D

DANG, Jiaxi 14

DEATS, Jennifer 92, 93

DONG, Grace 14

DUFFY, Ellen 90, 91

DUPUIS, Lauren 12

## E

EDWARDS, Sherry 09, 10

ERICKSON, Chris 05

## F

FAGUNDO, Nicole 07, 08

FENNAR, Miya

## G

GRAHAM, Jalia 10, 11, 12, 13

GUNNARSON, Breanna 12

## H

HAGEN, Kristen 10, 11

HARPULA, Jennifer 94, 95, 96

HAWN, Vivian 14

HIGGINS, Teresa 07

HO, Jessica 04, 05

HUAN, Hannah 12, 13, 14

HUGHES, Jessica 05, 07

## J

JORGE, Vanessa 08, 09, 10

## K

KAIRU, Nyakiyo 05, 06

KUNZ, Karen 93

## L

LEPELLETIER, Allison 01, 02

LIGO, Jennifer 12, 13, 14

## M

MALDONADO, Laurabeth 09, 10

MALDONADO, Macarena 09, 10, 11, 12

MARSHALL, Mia 13, 14

MCCARTNEY, Alexa 07

MCGOWAN, Kelsey 11

MCLEACH, Darlene

MUDALIAR, Yashil 12

MUHAMMAD, Faizah 11

## N

NELSON, Marissa 14

## O

OHUABUNWA, Barbara 06

OLSZTYN, Jennifer 05, 06, 07

## P

PAULTER, Michelle 04, 05

PHATAK, Uma 02, 04, 05

POTESTIO, Michelle 13, 14

## R

RAMJATTAN, Crystal 12

RAMOS, Jennifer 09, 10, 11, 12

REZA, Jabeen 04

RICHMOND, Rebecca 13, 14

RIVERA, Maritza 91

ROMERO, Ana 91

ROSE, Carol

RUSSO, Christina 04

RUSTOM, Layyal 10

## S

SANJAI, Deepti 04,  
05

SHAH, Shivani 11

SILVA, Jennifer 11, 12, 13, 14

SOBERS, Sophia 09, 10

## T

TOSCANO, Sharon 98

## V

VENERACION, Sheryl 97, 98, 99

VOTA, Amanda 07

*Records are incomplete. Please e-mail  
pillari@njit.edu with any additions or  
corrections.*

# Hall of Fame

Name	Grad. Year	Contribution	Sport (s)	Years Active	Year of Induction	Name	Grad. Year	Contribution	Sport (s)	Years Active	Year of Induction
BAKUN, Andrew I.	1982	Athlete/Asst. Coach	M-Soccer	1978-81/ 90-91	2005	IRIS, Herb	1951	Benefactor	--	--	2007
BAKUN, Myron	1967	Athlete	M-Soccer	1964-66	1991	KAMINSKY, Nicholas J.	1978	Athlete	Baseball	1975-78	2006
BARTH, Roland E.	1960	Athlete	M-Fencing	1957-59	2009	KASBARIAN, Raymond P.	1966	Founder/Athlete	Judo	1962-66	1989
			M-Soccer	1956-59		KETZNER, Robert Shelby	--	Coach	Rifle	1962-86	1987
BAUDER, Fred "Coach"	--	Coach	M-Basketball	1932-61	1989	KHOWAYLO, Alex	1969	Athlete	M-Soccer	1960-63	1996
BLUM, Raymond E.	1950	Distinguished Alumnus	Speedskating/ Cycling	--	1996	LUBETKIN, Charles "Tudy"	1953	Athlete	M-Basketball/ M-Track	1949-52	1994
						LYNCH, Robert K.	1984	Athlete/Coach	M-Fencing	1977-80/ 86-91	1993
BORJA, Hernan "Chico"	1981	Athlete	M-Soccer	1977-80	1986	MacDONALD, Dan	1984	Athlete	Baseball	1981-84	1992
BORNAKO, Gregory "Egor"	1970	Athlete	M-Fencing	1966-70	1987	OLSEN, Richard J.	1969	Athlete	M-Basketball	1965-69	1988
BOWSER, Hamilton V.	1952	Athlete	M-Fencing	1948-52	1989	OLSON, George R.	1977	Athlete	Baseball	1974-77	1987
BRADLEY, Thomas	1978	Athlete	M-Swimming	1974-78	1990	PAULIUS, Raymond V.	1985	Athlete	M-Soccer	1980-83	2006
BROWN, Andrew D.	1963	Athlete	M-Soccer	1956-59	2006	RODGERS, Tarik	1996	Athlete	M-Volleyball	1992-95	2010
CRIMMINS, David	1952	Athlete	M-Fencing	1948-52	2007	ROGERS, Warren	1988	Athlete	M-Basketball	1983-87	1993
CRUZ, Edward	1963	Athlete	M-Soccer	1959-62	1995	ROMULUS, Rudy	1991	Athlete	M-Volleyball	1988-91	1996
DAWSON, Marilyn E.	1986	Athlete	WVB/WBKB/SB	1982-86	1991	ROSS, Jonathan A.	1956	Athlete	M-Soccer	1953-55	2010
DeNICOLA, Carmine P.	1978	Athlete	Baseball	1975-78	2005	SARLO, Paul A.	1992	Athlete	Baseball	1989-91	2005
DeNURE, Dave	--	Coach	M-Volleyball W-Volleyball W-Basketball	1982-98 1986-90 1987-88	2009	SCHMID, John "Gene"	--	Asst Coach/Coach	Baseball	1968-72/ 73-97	2002
DeVITO, Louis	1960	Athlete	M-Soccer/ M-Fencing	1956-60	1992	SIMON, J. Malcolm	--	Coach	M-Soccer	1955-83	1994
								Director of Athletics	--	1983-94	
DIAS, Joe A.	1977	Athlete	M-Soccer	1973-76	1993	SKURLA, Peter J.	1941	Athlete	Bowling	1937-41	1992
DRURY, Eugene M.	1963	Athlete	M-Tennis	1960-63	1988	SORIANO, Gregory	1975	Athlete	M-Fencing	1968-72	2010
ENG, Katherine	1993	Athlete	W-Volleyball	1989-92	2007	SWANSON, Robert F.	--	Director of Athletics	--	1947-82	1986
ETIENNE, Yves	1979	Athlete	M-Volleyball	1976-78	1990	TAETZSCH, Robert	1952	Athlete	M-Fencing	1948-52	2007
FEHN, Gilbert F.	1940	Athlete	M-Basketball/ M-Tennis	1936-40	1992	TAETZSCH, William	1952	Athlete	M-Fencing	1948-52	2007
						TOSATO, Lawrence P.	1956	Athlete	M-Basketball/ Baseball	1952-56	1987
FITZGERALD, Joseph M.	--	Coach/Asst. Coach	M-Basketball	1961-66/ 52-61	1986	TUBELLO, Jeffrey	1976	Athlete	Rifle	1972-76	1988
FLEISHER, Seymour "Zoom"	1951	Athlete	M-Basketball	1947-51	1992	VAN WRIGHT, Nevea	1997	Athlete	W-Basketball	1991-96	2005
GAGLIARDO, Salvatore A.	1985	Athlete	M-Basketball	1981-85	1995	WALSH, John J.	1966	Athlete	MSoc/MBKB/ Baseball	1962-66	1986
GALLAGHER, Thomas G.	1985	Athlete	M-Basketball	1981-85	1991	WASNIEWSKI, Frank	1980	Athlete	M-Tennis	1977-80	1990
GIOVANNOLI, Arnold L.	1953	Athlete	M-Basketball	1950-53	1993	WELGOS, Bob	1962	Athlete	M-Basketball/ Bowling	1959-62	2005
GOLDRICK PITT, Elizabeth M.	1990	Athlete	W-Volleyball/ Softball/WBKB/WTen	1985-90	1995	WOROBEC, Myron S.	1966	Athlete	M-Soccer	1962-65	1994
GRAZIANO, Jean M.	1989	Athlete	Softball	1986-89	2009	YONEZUKA, Yoshishada	--	Founder/Coach	Judo	1962-?	1991
GRUENEWALD, Wendy A.	1997	Athlete	WBKB/Softball/ W-Volleyball/W-Soccer	1992-96	2003	ZORN, Werner	1962	Athlete	M-Soccer	1958-61	1988
HAASE, Jay W.	1975	Athlete	M-Fencing	1971-75	1988						
HAMMOND, Kenneth W.	1979	Athlete	M-Soccer	1974-77	2003						
HANDWERKER, Andy	1963	Athlete	M-Soccer	1959-62	2002						
HAUSSER, Paul C.	--	Administrator Coach	-- Fencing/Baseball	1953-91 1954-88/53-72	1990	<b>Teams</b>	<b>Year</b>	<b>Accomplishments</b>		<b>Year of Induction</b>	
HUBEY, Ali	1972	Athlete	M-Soccer	1968-71	1990	Men's Soccer	1960	NAIA co-National Champion		1988	
HURTADO, Fabian	1975	Athlete	M-Soccer	1970-74	1987	Men's Basketball	1981-82	NJIT's first ECAC and IAC champion		1990	
						Baseball	1982	NJIT's second ECAC and IAC champion		1993	

background: Julia Aronov



## Directions

### FOR GPS USERS

The address for Lubetkin Field at Mal Simon Stadium, the Estelle and Zoom Fleisher Athletic Center, and the Naimoli Family Athletic and Recreational Facility is 80 Lock Street, Newark, NJ, 07102.

### BY CAR

**New Jersey Turnpike: Driving North from South Jersey:** Take NJ Turnpike to Exit 13A Newark Airport. After toll stay to left and follow signs to Rt. 1 & 9 North. You will merge onto Rt. 1 & 9 North. Airport will be on right. Follow signs for downtown Newark and Rt. 21 North-(left lane exit ramp). Downtown Newark will be in front of you. NYC will be off to your right. Follow Rt. 21 North (McCarter Highway). Turn left on Raymond Blvd. Follow Raymond Blvd. past Warren Street traffic light and Fleisher Athletic Center, Naimoli Center, and Lubetkin Field at Mal Simon Stadium will be to your right (one soccer goal line runs along Warren Street and the soccer sideline parallels Lock Street).

**New Jersey Turnpike: Driving South from North Jersey:** Take exit 15W to Route 280 West, then follow Route 280 West directions.

**Route 280 West:** After drawbridge, take Exit 15A (Rt. 21 South - McCarter Highway). Follow Rt. 21 South to Raymond Blvd. Turn right on Raymond Blvd. Follow Raymond Blvd. past Warren Street traffic light and Fleisher Athletic Center, Naimoli Center, and Lubetkin Field at Mal Simon Stadium will be to your right (one soccer goal line runs along Warren Street and the soccer sideline parallels Lock Street).

**Route 280 East:** Take Exit 15 (Rt. 21 South - McCarter Highway). Follow Rt. 21 South to Raymond Blvd. Turn right on Raymond Blvd. Follow Raymond Blvd. past Warren Street traffic light and Fleisher Athletic Center, Naimoli Center, and Lubetkin Field at Mal Simon Stadium will be to your right (one soccer goal line runs along Warren Street and the soccer sideline parallels Lock Street).

**Garden State Parkway (North & South bound):** Take exit 145 to Route 280 East, then follow Route 280 East directions.

**Route 1 & 9 North & South:** Take exit marked Newark, Rt. 21 North (McCarter Highway). Follow Rt. 21 North (McCarter Highway). Turn left on Raymond Blvd. Follow Raymond Blvd. past Warren Street traffic light and Fleisher Athletic Center, Naimoli Center, and Lubetkin Field at Mal Simon Stadium will be to your right (one soccer goal line runs along Warren Street and the soccer sideline parallels Lock Street).

**Route 78 East:** Take Route 78 East to Rt. 21 North. Turn left on Raymond Blvd. Follow Raymond Blvd. past Warren Street traffic light and Fleisher Athletic Center, Naimoli Center, and Lubetkin Field at Mal Simon Stadium will be to your right (one soccer goal line runs along Warren Street and the soccer sideline parallels Lock Street).

**Route 22 East:** Take Route 22 East to Route 21 North. Turn left on Raymond Blvd. Follow Raymond Blvd. past Warren Street traffic light and Fleisher Athletic Center, Naimoli Center, and Lubetkin Field at Mal Simon Stadium will be to your right (one soccer goal line runs along Warren Street and the soccer sideline parallels Lock Street).



Stadium will be to your right (one soccer goal line runs along Warren Street and the soccer sideline parallels Lock Street).

**Route 21 North:** Follow Rt. 21 North to Raymond Blvd. Turn left onto Raymond Blvd. Follow Raymond Blvd. past Warren Street traffic light and Fleisher Athletic Center, Naimoli Center, and Lubetkin Field at Mal Simon Stadium will be to your right (one soccer goal line runs along Warren Street and the soccer sideline parallels Lock Street).

**Route 21 South:** Follow Rt. 21 South (McCarter Highway) to Raymond Blvd. Turn Right on Raymond Blvd. Follow Raymond Blvd. past Warren Street traffic light and Fleisher Athletic Center, Naimoli Center, and Lubetkin Field at Mal Simon Stadium will be to your right (one soccer goal line runs along Warren Street and the soccer sideline parallels Lock Street).

**New York Thruway:** Thruway to Exit 14A, Garden State Parkway. Follow Garden State Parkway directions above.

**George Washington Bridge:** NJ Turnpike South to Exit 15W. Follow Route 280 West directions above.

**Lincoln Tunnel:** West on Rt. 3 to Rt. 21 South. Turn right onto Raymond Blvd. Follow Raymond Blvd. past Warren Street traffic light and Fleisher Athletic Center, Naimoli Center, and Lubetkin Field at Mal Simon Stadium will be to your right (one soccer goal line runs along Warren Street and the soccer sideline parallels Lock Street).

**From Brooklyn, Queens and Long Island:** Take Verrazano-Narrows Bridge (Interstate 278) and follow 278 across Staten Island. Cross Goethels Bridge. Follow signs to New Jersey Turnpike North then follow New Jersey Turnpike directions above.

### PARKING

**Bus/Van Parking:** Visiting buses and vans may usually park on Lock Street adjacent to the athletic center. Please be careful not to block the parking space reserved for the doctor.

**Visitor Parking:** Visitor parking may be reserved in advance through your host. Otherwise, visitor parking at NJIT is available in the NJIT parking deck. Turn right onto Warren Street. Turn right onto Colden Street and proceed around the block to Summit Street. Parking Deck entrance is located to your right before the intersection with Warren Street.

**Parking for on-campus athletic contests:** NJIT is offering free off-street parking for fans attending regular season home soccer and volleyball matches and basketball games. The parking entrance, marked by a yellow sign is located on New Street.

### OTHER TRANSPORTATION SYSTEMS

**Newark Liberty International Airport:** Minutes from the NJIT campus. A minibus (Newark Airlink) or taxi service connects the airport with Penn Station in Newark. Bus, Newark Light Rail, and taxi connections are available at the station.

**Newark Penn Station:** Located in downtown Newark, connections to the NJIT campus may be made by bus, Newark Light Rail, or taxi.

**Morris & Essex Broad Street Station:** A five-block walk to the NJIT campus via MLK Boulevard to Central Avenue. Taxi service is also available.

**Newark Light Rail:** From Penn Station in Newark, take the Warren Street stop for the NJIT campus. The Warren Street stop is on the sidewalk behind the press box for Lubetkin Field at J. Macolm Simon Stadium.

### HOTELS DOWNTOWN

#### Hilton Newark Gateway

Gateway Center, Raymond Boulevard & McCarter Highway  
Newark, NJ, 973/622-5000

#### Robert Treat Hotel

50 Park Place, Newark, NJ, 973/622-1900

#### Hampton Inn & Suites Newark Riverwalk

100 Passaic Ave, Harrison, NJ, 973/483-1900

### NEAR NEWARK LIBERTY INTERNATIONAL AIRPORT

#### Best Western Newark Airport West

101 International Way, Newark, NJ, 973/621-6200

#### Hilton Newark Airport

1170 Spring Street, Elizabeth, NJ, 908/351-3900

#### Holiday Inn Newark Liberty International Airport

160 Frontage Road, Newark, NJ, 973/589-1000





#### 2014-15 Highlanders Men's Fencing

Back Row (l-r): Assistant Coach Jason Henderson, Kevin Butryn, Eduardo Ezcurra, Cole Degeroges, Andrew Gavrun, Gal Gluhic, David Kong, Mike Jurewicz, Ryan Hrapsky, Alex Lewis Hill, Assistant Coach Henry Kennard, Head Coach Yefim Litvan

Front Row (l-r): Andrew Mendez, Robert Slawinski, Simon Rizell, Ian Pershad, Henrique Marques, Maxwell Miller, Shivank Mishra, Ian Constantin



#### 2014-15 Highlanders Women's Fencing

Back Row (l-r): Assistant Coach Jason Henderson, Julia Garcia, Jule Shighihara, Nia Johnson, Abigail Bazile, Katarina Jevtic, Mehnaz Moon, Head Coach Yefim Litvan, Assistant Coach Henry Kennard

Front Row (l-r): Alessandra Rodrigues, Jennifer Ligo, Michelle Potestio

## 2014-15 HIGHLANDERS FENCING

### NOVEMBER

1-2	Sat.-Sun.	Temple Open (M/W)	10am
15	Sat.	Columbia Invitational (M/W)	10am
16	Sun.	MACFA B vs. C (at Johns Hopkins) (M)	10am
<b>30</b>	<b>Sun.</b>	<b>ALUMNAE/ALUMNI MEET (M/W)</b>	<b>10am</b>

### DECEMBER

7	Sun.	NIWFA Christmas Invitational (at Rutgers) (W)	10am
---	------	---	------

### JANUARY

18	Sun.	Vassar Invitational (M/W)	10am
25	Sun.	Philadelphia Invitational (at Penn) (M/W)	10am
31	Sat.	Eric Sollee Invitational (at Brandies) (M/W)	10am

### FEBRUARY

8	Sun.	FDU Invitational (W)	10am
		MACFA B Round Robin (at Stevens) (M)	10am
<b>15</b>	<b>Sun.</b>	<b>MACFA – A vs. B (M)</b>	<b>10am</b>
22	Sun.	Squad Championships (M/W) (at FDU-Florham)	10am

### MARCH

1	Sun.	MACFA Championships (at Army) (M)	10am
		NIWFA Championships (at Army) (W)	10am
7-8	Sat.-Sun	NCAA Regional Championships (M/W)	10am
19-22	Thu.-Sun.	NCAA National Championships (M/W)	10am

Head Coach: Yefim Litvan

Assistant Coaches: Jason Henderson (Rutgers '08), Danielle Henderson (Rutgers '10),  
Henry Kennard (St. John's University '08)

Home events BOLD/CAPS at Estelle and Zoom Fleisher Athletic Center