



HIGHLANDERS

NEW JERSEY INSTITUTE OF TECHNOLOGY

New Jersey Institute of Technology

2013-14
Fencing



NJITHIGHLANDERS.COM





NJIT

2013-14 Fencing

TABLE OF CONTENTS

About NJIT	2-5
University Administration	6-9
Athletics Senior Staff	9
Sports Medicine & Strength and Conditioning ...	10
Academic Support	11
NJIT in Division I	12-13
Athletics Facilities	14-16
About Newark	17
Sports & Entertainment Around Newark	18-19
Head Coach Yefim Litvan	20
Assistant Coach Jason Henderson	21
Rosters	22
2012-13 Results	23
Program History	24-26
Hall of Fame	27
Athletic Administration & Coaching Staff ..	28
Directions to NJIT	29
Women's Team Photo	30
Men's Team Photo	31

WHY THE HIGHLANDERS?

The home of NJIT, University Heights, was formerly known as the Newark Highlands and NJIT's mailing address used to be High Street, until the thoroughfare was renamed in memory of Dr. Martin Luther King, Jr.

In 2006-07, NJIT athletics, in keeping with its move to NCAA Division I, unveiled a new graphic identity, which included a new Highlanders logo. Developed by CN Foundry for NJIT, the logo depicts the traditional Highlander, whose ferocity and bravery against all odds are the stuff of legend.

FENCING

Head Coach: Yefim Litvan
NJIT record: Men 36-81 (6); Women 14-46-1 (6)
Career record: 13 NCAA berths in 13 seasons at Rutgers
Email: litvan@njit.edu
Assistant Coach: Jason Henderson
Student Assistant: Max McDermott
First Year of Program: Men 1935-36; Women 1982-83
Home Arena: Fleisher Multi-Purpose Room
Affiliation: NCAA National Collegiate
Men's Conference: Middle Atlantic Collegiate Fencing Association
Women's Conference: National Intercollegiate Women's Fencing Assoc.
2012-13 Records: Men 8-12; Women 6-10

QUICK FACTS

Location: University Heights, Newark, NJ
Founded: 1881
Enrollment: 10,130 (total)
NJIT website: www.njit.edu
Nickname/Colors: Highlanders/Red and White (Blue accent)
Affiliations: NCAA Division I, ECAC
University President: Dr. Joel Bloom, EdD
Director of Athletics: Lenny Kaplan
Athletic Department Phone: 973-596-3636

ON THE COVER:

Front cover: Julia Aronov, Bryan Ransinangue
Inside back cover: 2013-14 team photos

MEDIA RELATIONS

NJIT Athletics website: www.njithighlanders.com
Facebook & Twitter:
www.facebook.com/njithighlanders
@njithighlanders
Assistant AD for Sports Information: Tim Camp
Phone/Email: 973-596-8461/
timothy.camp@njit.edu
Assistant SID: Stephanie Pillari
Phone/Email: 973-596-8324/pillari@njit.edu
Assistant SID: Courtney Caden
Phone/Email: (973) 596-8485/caden@njit.edu
Sports Information FAX: (973) 596-8440

MEDIA INFORMATION

This guide is designed to assist in coverage of NJIT men's and women's fencing. For home events, NJIT sports information will provide official box score/results following the conclusion of a match. Coach Yefim Litvan and requested athletes will be available for interviews following a 10-minute cooling off period. Radio broadcast requests should be made at least 10 business days prior to the contest. Requests for coach and player interviews on nonevent days should be made through the NJIT sports information office (973-596-8461).

CREDITS

The 2013-14 NJIT Men's and Women's Fencing Media Guide is a production of the NJIT Sports Information Office in cooperation with the Office of Strategic Communications. Written and edited by Tim Camp and Stephanie Pillari. Cover and interior design by Karyn Olsen. NJIT photographs and information courtesy of Office of Strategic Communications. All interior team and action photography by Larry Levanti. Red Bull Arena photo (p. 19) courtesy of Getty Images/RBNY.

About NJIT

NJIT is New Jersey's Science & Technology University. With roots going back to 1881, when it was founded as Newark Technical School, New Jersey Institute of Technology observed its 125th anniversary in 2006.

Located in University Heights, Newark, NJ, home to more than 30,000 college students, NJIT's campus is just 10 miles from New York City.

Playing a critical role in shaping New Jersey's future, NJIT, as a major public technological university, is an important pipeline for the flow of technology into society. The university's educational programs prepare students to be leaders in the technology-dependent economy of the 21st century. University researchers seek new knowledge to improve processes and products for industry. Through public and private partnerships and economic development efforts, the university helps to grow new business ventures that fuel the economy.

In recent years, NJIT has put more than \$83 million toward new and improved buildings and facilities on the 45-acre campus, including biomedical engineering labs and a campus center.

Instructional Programs

NJIT offers an ever-expanding array of educational programs, with eight new academic programs approved beginning in 2009-10, which comes after the addition of 14 new programs in 2008. As of 2009, NJIT lists 55 bachelor's degree majors, 53 master's degree programs and 19 doctoral programs — through six schools:

- Newark College of Engineering**
- College of Architecture and Design**
- College of Science and Liberal Arts**
- School of Management**
- Albert Dorman Honors College**
- College of Computing Sciences**

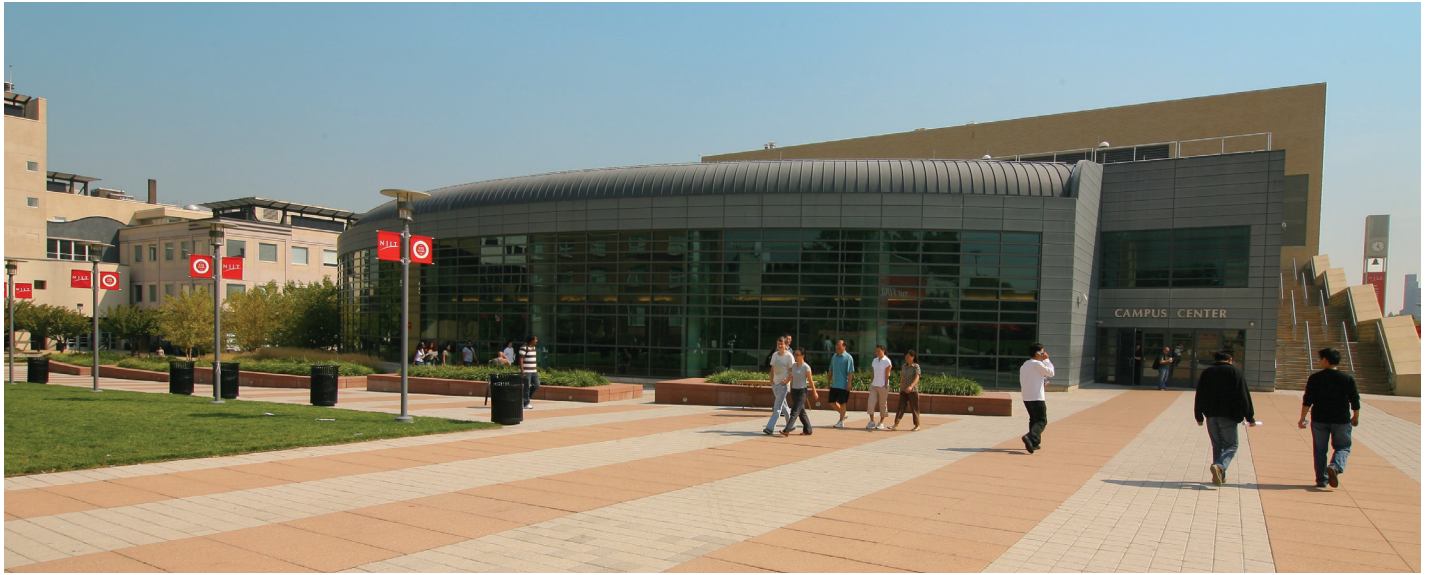
NJIT has 490 full-time faculty; more than 98 percent of whom hold the highest degree in their field. The student-faculty ratio is 16:1, with more than 7,125 undergraduate students and more than 2,825 graduate students. Our students hail from 33 states and more than 100 countries to rank eighth in the nation for diversity. Albert Dorman Honors College enrolls more than 500 students who take advantage of honors courses, research opportunities, advising and mentoring. Honors College students have SAT scores ranking in the top 10 percent nationally.

With more than 44,000 alumni, NJIT is rated by U.S. News and World Report as a top-tier research university offering bachelor's, master's and doctoral degrees.

Research

NJIT's research expenditures totaled more than \$100 million in 2011. As of June 30, 2011, NJIT had 134 issued patents, of which 60 are licensed to third parties.





Strategic Initiatives

The University's 2010-2015 strategic plans identify several focal areas for growth and development in education of young people and professionals.

- Sustainable Systems, including sustainable design, environmental science and engineering, ecology and alternative energy technologies.
- Digital Everywhere, including wireless telecommunications, social networks and cloud computing, network security and financial bubble research.
- Life and Healthcare Science and Engineering, including tissue engineering and adult stem cell research, rehabilitation medicine, biomedical informatics and data mining, and drug development and pharmaceutical manufacturing techniques.

On-going projects designed to enhance campus life and increase residential students on campus by 600:

- Warren Street Village at NJIT, which includes the Dorman Residential Honors College, 6-story facility with residence floors to house 360 honors scholars, as well as a common area with studying and other facilities to be used by commuter and residential honors students alike, designed to increase academic and social collaboration among honors scholars. The complex will also house five duplex town houses for Greek organizations and will have a restaurant, convenience store and a fitness center.

- The Gateway Project, which will integrate development of an enhanced University Heights neighborhood, envisioned with such improved amenities as enhanced housing and new commercial space with shops and restaurants.

Economic Development

NJIT is committed to economic development for Newark and the region. The university operates several outreach centers that provide direct technical assistance to the state's businesses with the goal of helping small and medium-sized companies. NJIT is also the home of New Jersey's oldest and largest incubator facility, and was one of the first institutions in the nation to adopt economic development as a fourth mission element, together with instruction, research and community service. More than 60 technology start-up companies, many of which hire NJIT students, are on campus.

About NJIT

The Career Edge

All 10 of the majors with the highest starting salaries for 2005-06 grads are in engineering, computing and business, according to the National Association of Colleges and Employers.

Computer and data processing services lead the list of the 10 fastest-growing occupations in projections compiled by the U.S. Department of Labor. Computer-related employment is expected to grow 117 percent by 2008, according to the Career Guide to Industries.

As technology changes all fields, those with science and technology backgrounds are positioned to lead. Among the CEOs of the S&P 500 companies, engineering is the single largest undergraduate degree and more than half of CEOs have undergraduate degrees in engineering, business management, science, math and computing.

The Global Edge

The high level of diversity in NJIT's student body and faculty prepares graduates to understand and succeed in the global marketplace. U.S. News ranks NJIT 10th among national universities for campus diversity.

NJIT was named among the top 500 world universities in a study by the Institute of Higher Education, Shanghai Jiao Tong University. Institutions were judged on quality of education, quality of faculty, research output and size; only 170 US institutions were ranked in the top 500.

The Technology Edge

NJIT has been designated as one of the nation's most technologically sophisticated universities by Forbes.com and a Princeton Review survey and the university has received major funding from the National Science Foundation and the National Security Agency in recent years.

The Academic Edge

NJIT has long been a national leader in applying new technologies and approaches to the education experience. NJIT was a pioneer in requiring computer science for students in all majors and the School of Architecture has led innovations in teaching CAD and digital design. The School's innovative "paperless" first-year program was recently cited by Campus Technology Magazine.

Students have a wide range of educational choices in building an interest-tailored program. Among their options are cross-enrolling at neighboring Rutgers to enrich their program with subjects such as music and languages.

NJIT students learn emerging technologies from researchers behind the technologies, developing valuable marketplace skills. Real-world experience through experiential learning makes graduates more marketable, with many co-op opportunities leading to permanent jobs.

The Regional Edge

New Jersey, with America's highest concentration of pharmaceutical, hi-tech, biotech, and medical device companies, is the place to study technology. It has the nation's highest per capita number of engineers and scientists as residents, while also leading in per capita rate of patents issued. Further, the Newark-New York region is a living laboratory for architecture and building sciences, environmental engineering and transportation.





The Research Edge

NJIT has been designated by the State of New Jersey as the Homeland Security Technology Systems Center and NJIT operates the world-renowned Big Bear Solar Observatory.

A History of NJIT

From the Industrial Revolution to the Information Age, New Jersey Institute of Technology has a rich history with its beginnings developing from the industrial age.

In 1881, an act of the New Jersey State Legislature, recognizing an urgent need, sought a home for what would be the state's technical school. The efforts of Newark's public and private sectors resulted with the opening of Newark Technical School, addressing the state's need.

Over time, the university expanded its curriculum and mission. In 1919, the university established baccalaureate programs in three engineering fields. By the middle of the 20th century, Newark Technical School was transformed into the robust Newark College of Engineering.

The post-war period was one of enormous activity with regular expansion of the campus, as well as the introduction of doctoral level programs. In 1975, with the addition of the New Jersey School of Architecture, the institution had evolved into a technological university, emphasizing a broad range of degrees and dedication to significant research and public service. Newark College of Engineering, stronger than ever, remained intact, but a new university name — New Jersey Institute of Technology — reflected the institution's expanded mission.

A broadened mission called for the creation of a residential campus and the opening of NJIT's first dormitory in 1980 began a period of steady growth that continues. Two new schools were established during the 1980s—the College of Science and Liberal Arts (1982) and the School of Industrial Management (1988). The Albert Dorman Honors College was established in 1994, and the newest school, the College of Computing Sciences, was created in 2001. Beginning in 2009 the College of Architecture and Design was created to house the New Jersey School of Architecture and the new school of Art and Design.

Dr. Joel Bloom *President, New Jersey Institute of Technology*



On January 9, 2012, the New Jersey Institute of Technology Board of Trustees voted unanimously to appoint Dr. Joel Bloom as President of the University, effective immediately.

Dr. Bloom had been serving as Interim President of NJIT since September 28, 2011, following the resignation of the previous president, Robert A. Altenkirch,

who had been in that post since July 2002.

Speaking for the NJIT Board of Trustees, Kathleen Wielkopolski said: "It is in the best interest of the university to appoint a president at the earliest possible date to provide stability and continuity to the important work of the university; that is, educating New Jersey's future science and technology leaders, responding to opportunities presented by the governor for workforce and economic development, building NJIT's national academic and research reputation, and proceeding with our ongoing significant fund raising initiatives, specifically, the \$150 million 'NJIT NEXT' campaign."

Bloom, who was NJIT Vice President for Academic and Student Services, as well as founding dean of the Albert Dorman Honors College, is well-positioned to take on this leadership role. Bloom, with a career spanning 20 years at NJIT, is passionate about the university and its students as their education in the sciences, engineering, technology, design and management transforms their future and that of their families.

As Vice President for Academic and Student Services, Dr. Bloom is responsible for eight divisions of the university, including physical education and athletics. In that role, his guidance has been vital in NJIT's transition in intercollegiate athletics to NCAA Division I from Division II, an endeavor that began in earnest following November 2002 discussions among Dr. Bloom, then-President Altenkirch, and Director of Athletics Lenny Kaplan. The transition reached official fruition on September 1, 2009, when the NCAA embraced NJIT as an across-the-board active (full) member of Division I following completion of a rigorous formal process.

Bloom's impact on the university has been significant. Under his watch, student enrollment increased from 7,600 to over 10,000 students, including increases in female and minority students. The average SAT math score is now in the top quarter nationally; Dorman Honors College enrollment increased 70 percent, totaling 685 with combined average SAT scores over 1335 for fall 2011; articulation agreements are currently signed with the state's high-tech high schools and 19 county colleges; and accelerated joint admission agreements exist with Rutgers Biomedical and Health Sciences, St. George's Medical School, SUNY College of Optometry and Seton Hall Law School.

In his role as dean of the Dorman Honors College and Vice President for Student and Academic Services, Bloom was integral in helping to shape the academic plan for the university. Further, Bloom led the development of a Dorman Residential Honors College and the planning for a Greek Village in collaboration with Greek alumni and currently enrolled students. Previously, Bloom led the successful effort to raise \$23M for Dorman Honors College scholarships.

Bloom expanded the Center for Pre-College Programs to help prepare students for the rigors of science, mathematics, engineering and technology education; with the college deans and faculty, he expanded honors courses

and undergraduate research, established the university's medical and health committee of faculty to advise and assist undergraduate students entry into graduate and professional schools and to coordinate the health-related NJIT disciplines; he increased retention and graduation rates, and planned residence halls that transformed a commuter campus to one with more than 50 percent of the freshmen living on campus.

As the university proceeds to implement a major comprehensive fundraising campaign, "Dr. Bloom brings an understanding of the university, its history and contacts, and will provide the necessary continuity needed at this time," said Trustee Wielkopolski.

Bloom has served the Newark community through his participation in the development of Science Park High School. He has also initiated multiple programs with the Newark Public Schools, most recently with the new Central High School—yielding the largest number of enrolled NJIT freshmen from the school. For over a decade, he has served as vice chair of the board for Community and Schools, a national dropout prevention program serving Newark and other urban school districts. He is active in many education organizations including The NJ Presidents' Council Executive Board for New Jersey Edgenet and the executive board of the NSF-funded Philadelphia Alliance for Minority Participation.

He has received national and state education awards, as well as federal, foundation and corporate grant awards. He has published journal articles and presented papers on school improvement, curriculum development, college transition and student assessment.

Prior to joining NJIT, Bloom served seven years as an assistant commissioner for the New Jersey Department of Education for the Division of General Academic Education. He was responsible for managing many of the education department's initiatives during Governor Thomas Kean's administration and was responsible for

statewide assessment, curriculum standards, math/science/technology education, and the improvement of urban education through piloting the Effective Schools research and Alternative Education programs.

Formerly a teacher and school administrator in New York City Public Schools, Dr. Bloom was also a director of research and instructor at Teacher's College, Columbia University.

He holds a master's degree and a doctorate from Teacher's College, Columbia University. He also earned master's and bachelor's degrees from Hunter College of the City University of New York.

Charles J. Fey *Vice President for Academic and Student Services*



Dr. Charles J Fey, joined NJIT with 39 years of leadership experience in student services as the new NJIT Vice President of Academic and Student Support Service in September 2012.

Previously, he was Vice President for student engagement and success and a professor in the graduate school at the University of Akron where he managed a \$53 million divisional budget, a student affairs staff of 386 members, supervised three associate vice presidents, two assistant vice presidents plus fund-raised through gifts and grant-writing.

Fey's four years at Akron followed a decade of service at the University of Maryland Baltimore Campus (UMBC), a research extensive university and member of the University System of Maryland. UMBC is best known for its undergraduate honors college. His last position was as vice president for student affairs. More than 20 years of student support service experiences at six other institutions of higher learning preceded this position.

His proudest recent achievement was the creation and management of the Akron Experience, a signature program designed to advance total student learning and engagement to help students make intellectual connections between in-class and out-of-class learning while insuring pathways of success.

While there, he also partnered with the Provost on projects to enhance the equality of student life and the student experience. These efforts resulted in the creation of living/learning communities which were so remarkable that they have received national recognition. The out of the classroom

experiences created and implemented by members of his division resulted in Akron being named the "Campus of the Year" award from Campus Activities magazine.

At UMBC, three programs resulted in markedly higher retention and graduation rates--the latter from 54 to 61 percent. He partnered with the provost, faculty members and residence life staff to expand a successful residence hall faculty-mentoring program and living learning and communities and oversaw the establishment of a learning community for commuter students.

Working with the Provost's Office, he and a Vice Provost developed a first-year experience program featuring a traditional credit-bearing course which resulted in the establishment of an undergraduate education office.

Fey received his EdD in the administration of higher education from Texas A&M University. He received both his BA in liberal arts from Pennsylvania State University as well as his Master of Education in counselor/education/college student personal services. He did post master's degree coursework in business management and higher education at Catholic University.

Lenny Kaplan *Director of Athletics*

Since taking over as head of NJIT's division of physical education and athletics in August 2000, Lenny Kaplan has been instrumental in guiding NJIT's reclassification to NCAA Division I.



Kaplan helped stabilize and expand a program that was entering its fourth year in Division II when he arrived in Newark. In late 2002, after discussions with then-university President Dr. Robert

A. Altenkirch and then-Vice President Dr. Joel Bloom, Kaplan took on the task of

steering NJIT's programs into Division I, a process that reached fruition with the NCAA's granting active Division I status, with full championship eligibility effective September 1, 2009.

Throughout Kaplan's tenure, NJIT has enhanced the athletics program, particularly in areas that benefit the student-athletes directly. A hallmark in achieving that aim was the Highlanders Athletics Campaign, which announced in the summer of 2009 that it had raised \$5.4 million of the \$5 million goal. Of the \$5 million in the goal, \$3 million was for facilities, \$1.5 million for athletic scholarships, and \$500,000 for program support.

The sports offerings have expanded to the current 18 varsity programs. And since 2004, NJIT has renovated its two main on-campus venues—Lubetkin Field at Mal Simon Stadium at Lubetkin Field and the Estelle and Zoom Fleisher Athletic Center. Further, the Naimoli Family Recreation Center, a 25,600-square foot facility opened early in 2011 enhanced the recreational and intercollegiate opportunities on campus.

The school also signed a 10-year partnership to play all home baseball in the professional Bears and Eagles Riverfront Stadium and later agreed to host basketball in the new Prudential Center, downtown Newark home of the NHL's New Jersey Devils. The NJIT club hockey team also plays all of its home contests in the AmeriHealth Pavilion, which is part of the Prudential Center and serves as a practice rink for the Devils.

Under Kaplan's leadership, many teams achieved regional and national Division II ranking. Success for several women's teams was unprecedented, with basketball, tennis and soccer all reaching postseason play for the first time in his administration,

Additionally, men's volleyball captured a 2007 divisional championship in the Eastern Intercollegiate Volleyball Association and the next year reached the EIVA playoff semifinals hosted by eventual 2008 national champion Penn State.

Kaplan guided the Highlanders toward further stability with membership in the newly-expanded all-sports Great West

Administration

Conference, which offers a conference home for 11 of NJIT's varsity sports.

In 2009-10, NJIT's first year as a full active member of Division I, the women's volleyball team and senior Sabrina Baby became the school's first national statistical champions at the Division I level, as team and individual leaders, respectively, digs per set. Baby was honored as the school's first CoSIDA Academic All-America in the Division I era, earning third-team national honors.

Christian Baumbach, a sophomore at the time, made history in 2009 as NJIT's first individual conference champion at the Division I level, when he won the Great West Conference men's cross country race. He also won the prestigious IC4A University Division race in the 101st annual running of that contest.

In 2010-11, the Highlanders earned their first-ever Division I conference team championship when women's tennis captured the Great West title in May.

In 2012, following a run to the championship game of the Great West Conference tournament, senior captain Isaiah Wilkerson received honorable mention on the Associated Press Division I All-America team, becoming the first NJIT student-athlete to earn honors from the AP in the Division I era.

By practically any measure, the 2012-13 year was the most successful for NJIT athletics since the program made the move to NCAA Division I competition, beginning in 2004 with men's soccer.

Both NJIT basketball teams captured Great West Conference championships—a first for those sports at the Division I level. In fact, the women's team, which won the 2013 Great West Tournament, had never won a conference tournament title at any level since beginning play in 1986-87, and the men, who won multiple championships in Division III, had not finished first in a conference since 2002-03 at the Division II level.

On an individual level, impressive news came in June after the conclusion of 2012-13 competition. In less than a week, senior pitcher Mark Leiter, Jr. was selected in the 22nd round of the annual Major League Baseball First-Year Player Draft by the Philadelphia Phillies and classmate and fellow pitcher Tripp Davis signed a free agent contract to play in the Kansas City Royals organization.

Men's basketball star Chris Flores, also a 2013 graduate, was one of six prospects brought in by the Brooklyn Nets on June 12 for a closed workout in preparation for the 2013 NBA Draft. Joining Flores among the six prospects in his workout were players from such perennial college basketball powers as Kentucky, North Carolina, and Pitt.

Men's soccer made the biggest mark among the fall teams, notching 10 wins to double the previous Division I high for a program that brought NJIT (then NCE) its only national championship with an NAIA national title in an undefeated 1960 season.

The NJIT men's tennis team had their best Division I season, posting a 16-6 record.

The leader was freshman Markus Schultz, who hails from Hagersten, Sweden. Named Newcomer of the Year for the overall NJIT athletics program, Schultz was 20-1 in singles and finished the year ranked 18th in the NCAA Division I Northeast Region by the authoritative ITA. He is the first NJIT tennis player to earn ITA regional ranking at the Division I level (women's players Iulia Doci in 2005 and the late Fatima Kasem in 2004-05 were regionally ranked by the ITA in Division II).

In outdoor track and field, junior Kelsey Jackson became NJIT's first woman individual Great West Conference champion when she captured the high jump title. The NJIT men won their first-ever team championship in the Collegiate Track Conference, competing as one of 17 teams that included teams from all three NCAA divisions.

NJIT's outstanding home facilities have allowed it to host conference championships in the Great West Conference and allowed it to host ECAC postseason championships in 2005-06.

Before coming to NJIT, Lenny Kaplan served 11 years at Manhattan College, where he began as Manhattan's director of operations and was assistant athletics director from 1991-2000.

Kaplan, a 1988 graduate of St. John's University with a degree in athletics administration, resides in Merrick, NY, with his wife, Nancy, and their sons, Michael and Joshua.

Athletics Senior Staff



Alexis Schug

Assoc. Director of Athletics/SWA
(973) 596-8452 schug@njit.edu



Joe Caiola

Asst. Director of Athletics/Business & Facilities
(973) 642-7224 caiola@adm.njit.edu



Tim Camp

Asst. Director of Athletics/Sports Information
(973) 596-8461 timothy.camp@njit.edu



Jayson Smikle

Assistant Athletic Director for Compliance
(973) 596-5278 jsmikle@njit.edu



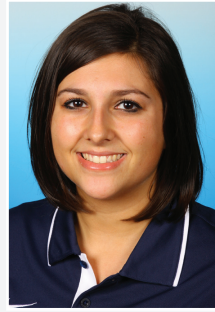
Matt Koscs



Paul Grayner



Melissa Maskery



Brittany Vorndran

Sports Medicine

NJIT sports medicine is moving forward with expanded facilities and a staff of four full-time trainers led by head trainer Matt Koscs, MS/ATC, with assistant trainers Paul Grayner, MEd/ATC, Melissa Maskery, and Brittany Vondran. They work with team physicians Louis Rizio, MD, and Stephen Matta, DO.

Matt Koscs, who earned both his bachelor's and master's degrees from the University of Delaware, has served NJIT as head trainer since July 2009, a year after he joined the staff as an assistant trainer. As an undergrad at Delaware, he was recipient of the Paris Delligatti Memorial Award for Excellence in Athletic Training.

Prior to NJIT, he served three years as head trainer at Hodgson Vocational Technical High School in Newark, DE. He also worked with soccer clubs in Delaware and was employed at Christiana Care Physical Therapy Plus, in Newark, DE.

Paul Grayner, who holds a bachelor's degree from Saint Leo College in Florida and a master's from American University in Washington, DC, has a diverse background in athletic training, having served at the college and professional levels, as well as in a fitness center setting. He joined the NJIT staff late in 2008.

From the mid-1970s to the mid-1980s, he was a trainer in the minor league systems of the New York Yankees and New York Mets and in 1984 he was assistant trainer with the Mets. He later worked with the Long Island Knights professional basketball team.

At the collegiate level, he was head trainer at Fairleigh Dickinson University in Teaneck, NJ from 1989 to 1998 and earlier worked as an assistant trainer at Hofstra, Adelphi and FDU.

Melissa Maskery, who joined the NJIT staff as an assistant athletic trainer in the summer of 2013, earned her bachelor's degree, majoring in athletic training and minoring in strength and conditioning, from the University of Delaware in 2011.

She earned her master's in athletic training at Temple University in May 2013. As a graduate assistant at Drexel, she worked with several teams and was on the medical staff for the 2010 National Championship Division IAA Football team.

At Drexel, she earned the 2013 Merit Award for Research in the College of Health Sciences & Social Work and was the recipient of Drexel University Dragon Award for Leadership. She resides in Wyckoff, NJ.

Brittany Vorndran, who joined the NJIT staff as an assistant athletic trainer in the summer of 2012, earned her bachelor's degree, majoring in athletic training, from Bridgewater (MA) State College in 2010 and was the school's 2008-09 Athletic Training Student of the Year.

She earned her master's in Kinesiology at James Madison University in Harrisonburg, VA, in May 2012. At James Madison, she worked with the cross country, track and field, tennis and cheerleading teams.

A resident of Millville, NJ, she has worked as a substitute teacher for the Millville Board of Education.

Dr. Louis Rizio is a board certified orthopedic surgeon and is fellowship trained in the field of sports medicine. He is a graduate of Rutgers and after earning his medical degree from the UMDNJ/New Jersey Medical School, Dr. Rizio completed his orthopedic residency at Tufts University in Boston.

He then completed a sports medicine fellowship at the University of Miami and was assistant team physician of the Hurricanes, as well as the Miami Dolphins, the Miami Hurricanes.

Dr. Rizio practices at the New Jersey Sports Medicine Institute in Livingston, NJ. Prior to starting his own practice, Dr. Rizio was the Chief of Sports Medicine at the NJ Medical School from 2000-2005. He is affiliated with four New Jersey hospitals: St. Barnabas Medical Center (Livingston); Short Hills Medical Center (Short Hills); Mountainside Hospital (Montclair); and, Overlook Hospital (Summit).

Dr. Stephen Matta, who is board certified in family medicine, currently specializes in primary care sports medicine at Mountainside Hospital in Montclair, NJ, a post he assumed after three years in the family practice residency program at Valley Baptist Medical Center in Harlingen, TX. He is a 2007 graduate of a five-year DO/MBA dual degree program with Philadelphia College of Osteopathic Medicine for his medical degree and Saint Joseph's University for an

MBA in healthcare administration. He is a 2002 magna cum laude graduate of Duquesne University in Pittsburgh, with a BS in honors chemistry. He and his family reside in Belleville, NJ.

Strength and Conditioning

Strength and conditioning is a key part of a successful Division I program, with an eye toward maximizing individual and team performance in competition. The strength and conditioning coach also works closely with the Athletic Training Staff in the areas of injury prevention and injury rehabilitation.

Administration



Dan Huff

The 2008-09 year brought another dimension to NJIT athletics with the hiring of *Dan Huff*, CSCS, as the program's first full-time strength and conditioning coach. In addition to the hiring of a full-time coach to coordinate

the strength and conditioning, NJIT renovated the weight rooms and purchased new equipment, with the area dedicated to use by the Highlander teams.

Huff previously served five years as strength and conditioning coordinator at Fairleigh Dickinson University in Teaneck, NJ, from 2003 to 2008, working with an 18-sport NCAA Division I program.

Huff was Sports Performance Director for Velocity Sports Performance in Wall, NJ, immediately before accepting his position at NJIT. He is a graduate of William Paterson University of New Jersey. He holds numerous certifications.

Academic Enrichment

NJIT's Center for Academic and Personal Enrichment (CAPE) added a new component in 2007 with the addition of an Associate Director position that was created for the specific purpose of serving the needs of NJIT's student-athletes.

The position focuses on five key areas: academic support, career development, personal development, leadership and community service including the Student-Athlete Advisory Committee and CHAMPS Life Skills for NJIT's nearly 300 student-athletes.

Sandra Taylor filled the post in January 2010, having previously spent her professional career at Manhattan College, which is also her alma mater.

Working at Manhattan, a founding member of the Metro Atlantic Athletic Conference, Taylor was most recently Associate Director of Athletics and Senior Woman

Administrator, filling those posts from 1996 to 2010.

For much of that time (1995-2003), she was Chief Athletic Department Compliance Officer. She began her service at Manhattan as Athletic Department Ticket Manager, serving in that capacity from 1993 to 2003.

She served on numerous NCAA, conference and internal college committees, including service on the NCAA Division I Management Council from 2004 to 2007 and as chair of the NCAA Women's Lacrosse Committee from 2002 to 2006.

She earned both her bachelor's degree in secondary education and her master's degree in special education from Manhattan College and is a doctoral candidate in educational leadership at St. Mary's University in Winona, MN.

Sandra and her husband, Ken, who is Associate Commissioner for Men's Basketball and Baseball at the MAAC, reside in Monroe Township, NJ, with their daughters, Katherine, who was born in May 2004, and Samantha, who was born in July 2009.

Mike Spisto moved to administration as NJIT's Eligibility Certification Office/Academic Adviser for Athletics in the Spring of 2013, working in the Center for Academic and Personal Enrichment (CAPE).

For the previous five years, he was the top assistant coach on the men's basketball staff, working with head coach Jim Engles in an association that culminated with the Highlanders capturing the regular season championship of the Great West Conference.

In addition to 14 years college coaching—five at NJIT—he served as Director of Athletics at the State University of New York at Delhi in the two years before he joined Engles' coaching staff with the Highlanders.

He had two stints as head coach at the SUNY at Delhi sandwiched around three years as a Division I assistant with Rider and Albany (NY). He began his coaching



Sandra Taylor

career with two years an assistant at his alma mater, Division III SUNY Oneonta.

At Delhi, which is also an alma mater, he was head coach from 1999 to 2001, left to become a Division I assistant and then returned for another two-year stint as head coach from 2004 to 2006 before becoming AD at Delhi.

His head coaching record in four years at SUNY Delhi was 86-31 and both stints included championships and coaching awards.

His first Division I coaching assignment came at Rider University in 2001-02, where he worked alongside Jim Engles as an assistant when Rider captured its first-ever Metro Atlantic Athletic Conference regular season championship.

Heading to the University at Albany (NY), he helped recruit the team that would win back-to-back America East Conference championships

Spisto's coaching career began at Oneonta State following his 1997 graduation. In addition to his bachelor's degree from Oneonta, he earned an associate's degree from SUNY Delhi, as well as an MSS from United States Sports Academy.

He played at both Delhi and Oneonta and was all-region twice at Delhi, where he is the career assists leader. At Oneonta he was captain as a senior after winning an ECAC title his junior year.

Mike and his wife, Katie-Lynn, reside in Staten Island, NY, with their young children: sons Michael and Christopher, and daughter Alyssa.



Mike Spisto

NJIT and NCAA Division I

Beginning on September 1, 2009, the entire NJIT athletics program officially gained across-the-board active membership in NCAA Division I, completing a process that began officially in 2003.

NJIT, its teams, and student-athletes enjoy the full benefits of Division I membership, including eligibility for Division I postseason championship competition and the inclusion of the Highlanders among the national Division I leaders in statistics maintained by the NCAA.

Within months of NJIT's active Division I membership, the school won its first national Division I statistical championships, as women's volleyball player Sabrina Baby led the nation in digs per set, while she and her teammates captured the team digs crown for digs, as well.



Max Miller

Background photo: Ian Pershad

The NCAA's decision making NJIT a full member of Division I completed a specific timetable that required NJIT and its Department of Athletics to meet a series of annual benchmarks before proceeding to the next step.

NJIT, which previously competed in NCAA Division II, first moved to reclassify its men's soccer program in 2003. The move grew out of November 2002 meetings among President Robert A. Altenkirch, Vice President Joel Bloom, and Director of Athletics Lenny Kaplan. From there, came a proposal from Dr. Altenkirch to the Board of Trustees, which unanimously approved in February 2003 a plan to reclassify men's soccer to Division I. Little more than two years later, the NCAA approved NJIT's proposal to begin advancing its entire program to Division I.

Men's soccer achieved active Division I status in 2005 and NJIT women's soccer became postseason-eligible in 2007. The remainder of NJIT's athletics program also began reclassifying in 2005, with active status taking longer for an entire program than under the single-sport-per-gender track used for the two soccer teams.

In 2005-06 the lion's share of the competition for all but men's soccer came at the Division II level. In 2006-07, 2007-08, and 2008-09, NJIT's teams competed at the Division I level and complied full with NCAA Division I rules, but were not eligible for championships at the top level.

Every facet of the program has been enhanced in the reclassification, with a special emphasis placed on student-athlete welfare. Facility upgrades have gone along with sports medicine staff expansion, a strength and conditioning

program, and academic enrichment. NJIT has also built a model NCAA Division I rules compliance regimen within its athletics program and across the entire university.

A key late benchmark in reclassification came in the spring of 2009, with NJIT's successful completion of the NCAA Division I certification self-study. An in-depth project that takes approximately one year to complete and involves an on-campus visit from a Peer Review team, Division I certification, renewable every 10 years, is required of all active Division I institutions.

"We completed a major milestone in demonstrating that we have the infrastructure in place and the commitment to compete at the highest levels, not only academically but now athletically as well," said Dr. Altenkirch, who made upgrading athletics a priority from the beginning of his tenure as the seventh President of NJIT in May 2002.

Professor Robert English, the NCAA Faculty Athletics Representative and Interim Dean of the School of Management, added, "I am very impressed with NJIT's student-athletes who have worked hard to meet the challenge of the heightened level of Division I competition and at the same time continued to excel academically, with many athletes earning academic honors and awards and several earning perfect 4.0 GPAs during the semester of competition."

Further, the NJIT Board of Trustees embraced the transition to Division I as part of the university's strategic plan to enhance the quality of campus life in NJIT's transition to a residential university.

NJIT and NCAA Division I

Going back to early announcements of NJIT's NCAA reclassification plans, Altenkirch stated: "As NJIT continues to grow academically, and as a residential university, strengthening the athletics program through the transition to Division I will allow us to align the university with our academic peers."

Already, NJIT's teams have competed throughout the United States, taking on opponents from schools that are instantly recognizable for their stature in academics and athletics.

NJIT student-athletes have all faced opponents from eight Ivy League schools and 9 Patriot League schools including Army and Navy, Bucknell, Lafayette, and Leigh.

The eighth New Jersey-based institution Division I, NJIT has competed against all seven of its home state peers including Rutgers and Seton Hall.

In addition, Highlander teams have taken on squads from such famed conferences as the Atlantic Coast Conference, Big East Conference, Big Ten Conference, Big 12 Conference, and Pac 10 Conference.

Two high-profile opponents--Maryland in men's soccer in 2005 and Penn State in men's volleyball in 2008—won national championships following the same regular seasons in which they faced NJIT.

The Highlanders have also competed against members of all of the conferences based in the Northeastern and Mid-Atlantic regions of the United States, including America East, Atlantic 10, Colonial, Metro Atlantic, Mid-Eastern, and Northeast.

The eighth New Jersey-based institution in Division I, NJIT has competed against all seven of its home state peers,

including Big East programs Rutgers and Seton Hall.

NJIT's longest-established Division I program, men's soccer, gained its first win against a Big East foe in 2008, defeating Rutgers a year after topping San Diego State for the Highlanders' first win over a Top 25-ranked team.

NJIT began play as a core member of its first Division I conference, the Great West Conference, which began full competition in 2009-10. In the spring of 2011, the second season for the GWC, the Highlanders celebrated their first Division I team championship, when women's tennis captured the Great West title.

Previously, NJIT was in the Metropolitan Swim Conference, which, in 2012-13, included 22 programs from all three NCAA Divisions. NJIT and St. Francis of Brooklyn were the only Met Conference representatives from Division I. With its place in Division I officially certified by the NCAA, NJIT looks ahead to continued growth.

NJIT is one of three new members of the Coastal Collegiate Swimming Association (CCSA), announced in August 2013 of the 15-member Division I conference. NJIT was announced as a new CCSA conference member along with UMBC (University of Maryland, Baltimore County) and University of the Incarnate Word (San Antonio, TX). The Highlanders will be one of seven schools competing on the men's side of the CCSA, joining Davidson, Gardner-Webb, Howard, Incarnate Word, UMBC (winner of the last two America East Conference titles), and VMI. Previously, NJIT was in the Metropolitan Swim Conference, which, in 2012-13, included 22 programs from all three NCAA Divisions. NJIT and St. Francis of

Brooklyn were the only Met Conference representatives from Division I.

For his part, Director of Athletics Lenny Kaplan said: "We are looking forward to being a solid and successful member of Division I and we are excited by the opportunity to write a new chapter in the history of NJIT athletics."



Michelle Potestio

Background photo: Abigail Bazile

Athletics Facilities

The New Jersey Institute of Technology teams play home games and practice in a combination of facilities on campus and off.

The on-campus facilities include Lubetkin Field at Mal Simon Stadium for outdoor sports and the Estelle and Zoom Fleisher Athletic Center for indoor sports. In addition, NJIT in 2011 opened is the Naimoli Family Athletic and Recreational Facility, a multi-purpose indoor facility on the site of the former outdoor tennis courts.

Off-campus venues include Bears and Eagles Riverfront Stadium, a professional minor league stadium that is the home of NJIT baseball; the Prudential Center, home of the NHL Devils and NBA Nets, which has hosted selected NJIT basketball games; and, Branch Brook Park in Newark and Van Cortlandt Park in the Bronx, home sites for NJIT cross country. All except for Van Cortlandt Park are less than two miles from the NJIT campus.

Lubetkin Field at Mal Simon Stadium

The men's and women's soccer teams play their home games and practice on campus at Lubetkin Field at Mal Simon Stadium, a first-class venue for college soccer.

The field on the west end of NJIT's University Heights campus is an all-weather facility, with 24/7 availability for competition or practice. Outfitted with SprinTurf artificial grass in the summer of 2004, Lubetkin Field at Mal Simon Stadium also includes lighting for night contests, bleacher seating for more than 1,200 spectators, a press box and scoreboard.

The fully-enclosed facility, with its entrance a few feet opposite the entrance of the indoor Estelle and Zoom Fleisher Athletic Center, can take its place alongside any college soccer facility in the Northeast.

The home of Highlanders soccer served as the host site for the first-ever Great West Conference women's soccer championship tournament in November 2009. Previously, NJIT hosted the three-day 2005 ECAC Division II women's soccer championship tournament.

In the fall of 2005, when the Northeast was hit with record rainfall, games went on without a hitch at Lubetkin Field, thanks

to the quality of the surface. Indeed, with the rain disrupting schedules around the region, some crucial Big East contests involving Seton Hall were moved to NJIT's home field. Those games, too, went off without a hitch.

Estelle and Zoom Fleisher Athletic Center

The NJIT men's and women's basketball teams and men's and women's volleyball teams play their home games in the Fleisher Athletic Center gymnasium, while the swimming and diving team competes and practices in building's pool. The Fleisher Center also houses intercollegiate fencing, as well as all athletic department offices, varsity and general weight and fitness rooms, and the athletic training room.

In the summer of 2006, the gym underwent renovation to include installation of a new floor and baskets, new lighting, new sound system and new scoreboards, along with entirely new seating for approximately 1,500 spectators after the first phase of renovation. The back bay 'C gym' can be sectioned off from the main competition floor, making the facility useful for intramurals, physical education classes and campus recreation time, while being able to host multiple simultaneous events.

A six-lane swimming pool in Fleisher Athletic Center is home to the NJIT swimming team. Fencing has its own area on the second floor of the building.

In addition to all athletic department offices, the Fleisher Athletic Center also houses the sports medicine staff in the Athletic Training Room and the varsity weight room, supervised by the head strength and condition coach. The building's third floor is home to a fitness center, which is open for use by all students and staff.



Lubetkin Field at Mal Simon Stadium

Athletics Facilities



NJIT Athletics Weight Room at Estelle and Zoom Fleisher Athletic Center

The Naimoli Family Athletic & Recreation Facility

Opened in 2011, the facility is approximately 25,600 square feet. The Naimoli Family Center will be a multi-purpose space for athletics, community recreation, and gatherings involving large numbers of people.

Built on top of the old outdoor tennis courts adjoining the Fleisher Athletic Center, construction of this new building has been made possible, in part, by a generous gift from Vincent Naimoli '62, Chairman and CEO of Anchor Industries International and Chairman Emeritus/ Founder of the Tampa Bay Rays major league baseball team.

The facility houses courts for tennis and is available for other athletic and recreational activities, including practice for basketball and volleyball. It is heated and air conditioned, with flooring appropriate for the intended athletics and recreational activities.

Its indoor tennis courts offer vital year round practice and playing opportunities for NJIT's intercollegiate tennis teams, which have been consistently successful in the transition to Division I. In 2011, the women's tennis team became NJIT's first conference championship team in the Division I era.

Bears and Eagles Riverfront Stadium: Home of the NJIT Highlanders

Joe Torre, then the manager of the New York Yankees, visited New Jersey Institute of Technology on December 8, 2005 to herald a new partnership between NJIT's baseball team, the Highlanders, and the Newark Bears.

Torre, a friend of the Bears and of college baseball, was on hand as the Highlanders signed a 10-year contract to play their home games at Bears & Eagles Riverfront Stadium in Newark.

"I think this partnership is nothing but aces," Torre said during a press conference at NJIT. "It's a partnership between two

class organizations that will make for nothing but a lot of fun for everyone."

For the previous two years, the Highlanders played their home games at the stadium. But the team's longer-term commitment to play at the stadium came as NJIT elevated its baseball program to Division I.

"NJIT is bringing Division I baseball to this great stadium," said NJIT President Robert A. Altenkirch, "which will generate the highest level of excitement. It's a great partnership that allows NJIT to play intercollegiate baseball in a great facility, maybe the best for college baseball in the country."

Bears and Eagles Riverfront Stadium, the \$30 million state-of-the-art home of the Newark Bears, officially opened to the public on July 16, 1999.

With a seating capacity of 6,200 Bears and Eagles Riverfront Stadium affords everyone in attendance an up-close view of the action. The ballpark also has 20 luxury suites, a picnic area, a party deck, a concert stage situated behind the outfield wall and a major league-caliber press box featuring two radio booths and two television booths.

The name, Bears and Eagles Riverfront Stadium, honors Newark's rich baseball history. The original Bears were a farm team for the New York Yankees up until 1949 and the Eagles were a very successful Negro League team that played in Newark until 1950.



Bears and Eagles Riverfront Stadium

Athletics Facilities



Prudential Center

In October 2007, the Prudential Center ushered in a new era in sports and entertainment in Newark and the entire northern New Jersey area.

Prudential Center is the cornerstone in the revitalization and renaissance of downtown Newark. In addition to the arena, Newark will soon add scores of condominiums, restaurants, themed bars and mixed retail establishments. Prudential Center, one of the finest arenas in the country, is New Jersey's home for hockey, basketball, concerts and numerous other events.

A public/private partnership between the City of Newark and Devils Arena Entertainment made the \$375 million Prudential Center a reality that is changing the face of downtown Newark and making it a destination place for sports and live entertainment in the region.

"The Rock" is located about a mile from NJIT's University Heights campus and is known best as the home of the National Hockey League New Jersey Devils and the former home of the National Basketball Association New Jersey Nets.

The arrival of the spectacular Prudential Center nearly coincided with NJIT's arrival as an NCAA Division I institution--the first in Newark and the newest in New Jersey in more than 20 years. The Rock opened one year after NJIT began Division I competition as part of its NCAA reclassification which is now complete.

In the arena's inaugural year, NJIT played host to six basketball games on four dates, including four men's basketball games and two women's games. Included was the first women's basketball game in the building's history, when the Highlanders entertained Cornell on January 15, 2008.

The Highlanders hosted additional basketball games in subsequent years and have played there each year of the building's existence. Further, NJIT's club ice hockey team plays all of its home games in the full-size Devils practice rink facility

(AmeriHealth Pavilion), which adjoins the main arena and has an 800-seat capacity. And one of the special events held in the main arena is NJIT's annual commencement.

Branch Brook Park and Van Cortlandt Park

A hallmark of the NJIT cross country program under veteran coach Al Alonso is its ability to host cross country competition that have made Highlander-sponsored races a popular destination for schools from throughout the New York/New Jersey area.

In 2009, NJIT hosted the Great West Conference championships at Van Cortlandt Park in the Bronx, and the course, which is home to some of the most prestigious events in the sport, is also the home venue for other annual NJIT-hosted races. Branch Brook Park, which is a public park of Essex County, reaches into several towns, including Newark, with the park entrance less than a mile from the NJIT campus.

About Newark



Newark: The Renaissance City

NJIT is located in the heart of New Jersey's largest city, Newark, with a population of over 300,000, making it the 65th-largest city in the United States. A major urban center, Newark is a city on the move.

Attractions in Newark include:

- **The Prudential Center, a major indoor entertainment and sports venue housing New Jersey Devils hockey and major concerts and other premier events**
- **New Jersey Performing Arts Center**
- **The Newark Museum**
- **The Newark Public Library**
- **Symphony Hall**
- **Branch Brook Park**
- **Art galleries, restaurants, shopping**
- **The Ironbound neighborhood, renowned for its dining and vibrant nightlife**
- **An urban architectural laboratory**
- **Professional minor league baseball (Newark Bears)**

Newark: New Jersey's College Town

Some 30,000 undergraduate, graduate, and professional students attend classes in the University Heights section, which is home to NJIT, Rutgers-Newark, Rutgers Biomedical and Health Services, and Essex County College.

Adjacent to NJIT to the east, is the Newark campus of Rutgers University and the two schools enjoy an exceptionally close and productive relationship. NJIT and Rutgers students have library privileges at both campuses. NJIT students may also enrich their educational experience by enrolling in Rutgers-Newark courses and in full degree programs in disciplines not offered by NJIT, such as art, music, geology, and psychology.

Each year, the two universities co-sponsor a common season of theatrical productions, as well as 'World Week', a joint program of honors colloquia, and a variety of other cultural and social activities.

NJIT also enjoys a cooperative relationship with its neighbor to the west in the University Heights area, UMDNJ, with several joint degree programs.

New Jersey/New York Metropolitan Region

NJIT and Newark are a part of a region that is a magnet not only to the rest of the United States, but also to the world.

In Newark and neighboring northern New Jersey alone, attractions such as the Prudential Center, New Jersey Performing Arts Center, Meadowlands Sports Complex, Red Bull Arena, Liberty Science Center, and numerous others are minutes away by car and in most cases accessible by public transportation. Literally dozens of shopping malls are within a 20-minute drive of Newark, as well.

Midtown Manhattan, with all that it and the rest of New York City offer, is less than 15 miles from the NJIT campus.

NJIT students have regular access to discount tickets for Broadway shows, museums, concerts, and sporting events.

The school also sponsors weekend trips throughout the northeastern United States, with activities such as skiing, boating, swimming, hiking, and more.

The spectacular Jersey shore is less than an hour away by car and winter sports are within a couple of hours drive to the west and north.

Sports & Entertainment Around Newark

NJIT, with its campus in Newark, NJ, sits in a region that abounds with major professional sports unlike any other in the United States and perhaps in the world. There are nine teams in the major professional leagues (MLB, NFL, NBA, and NHL) located in New York City, northern New Jersey and Long Island.

Only one of nine major teams is more than 25 miles from Newark, but most, including the New Meadowlands Stadium (Giants and Jets NFL football), Madison Square Garden (NBA Knicks, NHL Rangers), are much closer.

The three closest professional sports venues (listed below) are within three miles of NJIT's campus and can be accessed in a matter of minutes at low cost by public transportation, beginning with Newark Light Rail, from campus.

Prudential Center

The home of the National Hockey League New Jersey Devils is in downtown Newark at the corner of Mulberry and Edison streets, about one mile from the NJIT's University Heights campus.

Opened in October 2007, 'The Rock' is the centerpiece of the city's Downtown Core Redevelopment Project. In addition to NHL hockey, it has hosted numerous entertainment and sporting events, including NJIT basketball.

NJIT played basketball in the Rock in the inaugural year and in each year since. Indeed, NJIT hosted the first women's basketball game ever played in the Prudential Center on January 15, 2008 (NJIT vs. Cornell).

The arena, with full-capacity seating for 18,500 spectators, features a 4,800 square-foot exterior LED screen, as well as the latest in ice-surface technology and a gourmet restaurant overlooking the ice for Devils games. The building contains 850,000 square feet of space, 9,000 tons of steel, eight million pounds of structural steel and 25,000 cubic yards of concrete.



Sports & Entertainment Around Newark



Red Bull Arena

Located in Harrison, NJ, just across the Passaic River from Newark and less than three miles from the NJIT campus, the new home of the New York Red Bulls (opened in March 2010) sets the standard for soccer venues across North America.

The state-of-the-art soccer-specific facility is a major component of a multi-billion dollar development.

Red Bull Arena has a number of key design elements which give its seating bowl a close-to-the-action feeling and the unique stadium roof design extends from its leading edge over the entire seating bowl and then curve down to the concourse.

The overall seating capacity for soccer is 25,000, including 30 luxury suites (20 lower level and 10 upper level) and 1,116 club seats. Other amenities include three stadium clubs and two retail outlets.



Bears and Eagles Riverfront Stadium

Bears and Eagles Riverfront Stadium, the \$30 million state-of-the-art home of the professional baseball Newark Bears and since 2004 the home of NJIT Highlanders baseball, officially opened to the public on July 16, 1999. With a seating capacity of 6,200, "The Den" affords fans an up-close view of the action. The ballpark also has 20 luxury suites, a picnic area, a party deck, a concert stage situated behind the outfield wall and a major league-caliber press box.

In December 2005, NJIT and the Bears held a joint press conference to herald a new partnership that includes a 10-year deal that extends Bears and Eagles Riverfront Stadium as the home of NJIT Highlanders baseball.

COACHING STAFF



HEAD COACH YEFIM LITVAN

Yefim Litvan, who has coached internationally for the United States in two Olympic Games and who recently completed a highly successful tenure as a college head coach at Rutgers University, became head coach of the men's and women's fencing teams at New Jersey Institute of Technology in 2007.

Litvan, who was honored as 2007 Coach of the Year by the United States Fencing Association,

entered college coaching in 1990. Since then, he has guided championship-level teams and individuals in both men's and women's fencing and in all three weapons of the sport--sabre, foil and epee.

An émigré from the former Soviet Union, Litvan became an assistant at the University of Pennsylvania in 1990, remaining there until being named head coach at Rutgers in New Brunswick, NJ, in June 1994. He was head coach of Rutgers until 2007 and then joined the NJIT staff.

He joined the United States National Team program in 1995 and was a coach in the 1996 and 2000 Olympic Games. Litvan, who also coached in the World University Games and in the Pan American Games, was on the US coaching staff for the fencing World Championships from 1995 to 1999.

In addition to his college and national team work, Litvan has coached at the New York Athletic Club since 1995 and worked with three fencers who have combined to compete in five Olympic Games, while combining to win six United States national championships.

In 13 years as coach at Rutgers, Litvan led his teams to 13 berths in the NCAA national championships. The teams consistently finished in the top 15 and made the top 10 in seven NCAA tournaments.

In the March 2007 NCAA national championships, Litvan guided his team to a 12th-place finish. It was the final varsity fencing competition for Rutgers, which announced last year that it was eliminating six varsity intercollegiate sports, including fencing.

In 2003, under his tutelage, women's fencer Alexis Jemal, who had not competed interscholastically prior to college, captured the individual NCAA championship in the women's sabre. In 1996, Litvan's Rutgers team won the NCAA team championship in another weapon of fencing, the epee.

In four years at Penn, Litvan coached three All-Americans and two Ivy League team champions. The Penn women's team was second in the 1994 NCAA championship and the Penn sabre team was second at the NCAAs in 1993 and third in 1994.

Litvan's coaching career began in the former Soviet Union in 1959, when he was based in Ukraine. Before immigrating to the United States, more than 20 of his protégés achieved the rank of Master of Sports in the former USSR.

At NJIT, he leads a sport with one of the longest, richest traditions at the school, with records dating back to 1935-36 on the men's side. A separate women's program was founded in 1982-83 and competed until 1990-91. The women's program was re-established in 2003-04 and continues as a Highlander varsity sport.



ASSISTANT COACH JASON HENDERSON



Jason Henderson, a star fencer for four years under the tutelage of Yefim Litvan at Rutgers University, was reunited with his old coach in the summer of 2010, signing on as an assistant coach at NJIT on the staff headed since 2007 by Litvan.

Henderson, who graduated from Rutgers cum laude in January 2008, was a two-time NCAA All-American and four-time NCAA National Championship participant in a four-year career from 2003 to 2007.

A three-year team captain, Henderson graduated with 3.65 cumulative GPA with a double major in sports management and philosophy, making the dean's list for eight semesters and earning numerous awards for academic excellence and leadership.

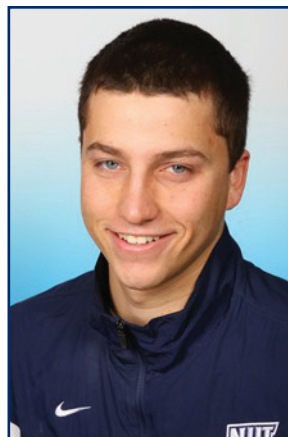
Henderson was a member of the National Society of Collegiate Scholars; Rutgers Fencing MVP in 2004; Dean's Award for Co-Curricular Excellence; SAAC representative; Cap and Skull Honor Society; Athletic Director's Excellence Award; and, Chi Alpha Sigma—National Athlete Honor Society.

He went on to graduate school, earning a Master of Management Studies in May 2010 from Duke University's Fuqua School of Business.

He is co-founder and director of Air Castles and Slides, LLC, and ACVI Internet and Business Services, LLC, both based in Edison, NJ.

Henderson resides in Piscataway, NJ.

STUDENT ASSISTANT MAX MCDERMOTT



Assistant Coach Jason Henderson

2013-14 ROSTERS

MEN'S ROSTER

NAME	YR.	EVENT	HOMETOWN/HIGH SCHOOL
Christian Aldover	Sr.	Sabre	Wayne, NJ/Wayne Hills
Ian Constantin	So.	Epee	Roselle Park, NJ/Academy of Information Technology
Matt Downey	Jr.	Epee	High Bridge, NJ/Voorhees (Raritan Valley CC)
Edward He	Sr.	Epee	Livingston, NJ/Livingston
Ryan Hrapsky	Fr.	Epee	Point Pleasant Beach, NJ/Point Pleasant Beach
Michal Jurewicz	Fr.	Sabre	Whippany, NJ/Whippany Park
David Kong	Fr.	Foil	Rutherford, NJ/St. Peter's Prep
Maxwell Miller	Fr.	Foil	Harrington Park, NJ/Northern Valley Regional
Shivank Mishra	Jr.	Sabre	New Delhi, India/Rockwood School (India)
Ian Pershad	Jr.	Foil	Montclair, NJ/Montclair
Bryan Ransinangue	Sr.	Sabre	Wayne, NJ/Wayne Hills
Alex Sadowski	So.	Sabre	Millington, NJ/Watchung Hills
Andrew Truong	Sr.	Foil	River Edge, NJ/River Dell

WOMEN'S ROSTER

NAME	YR.	EVENT	HOMETOWN/HIGH SCHOOL
Opeyemi Alade	Sr.	Sabre	Belleville, NJ/Belleville
Julia Aronov	Jr.	Epee	Forest Hills, NY/Francis Lewis
Abigail Bazile	Jr.	Epee	Teaneck, NJ/Teaneck
Andrea Camargo	Sr.	Foil	Ringwood, NJ/Lakeland
Margaret Christian	Sr.	Epee	Lake Hopatcong, NJ/Montville
Jiaxi Dang	Gr.	Epee	Shenzhen, China/Shenzhen Yangang Middle School
Grace Dong	Jr.	Foil	Plainsboro, NJ/WW-P High School North
Vivian Hawn	So.	Epee	East Hanover, NJ/Mountain Lakes
Hannah Huan	Sr.	Foil	Franklin Lakes, NJ/BC Academics
Jennifer Ligo	Jr.	Sabre	Dayton, NJ/South Brunswick
Mia Marshall	Jr.	Epee	Linden, NJ/Linden
Michelle Potestio	So.	Foil	Staten Island, NY/Tottenville
Rebecca Richmond	So.	Epee	Lindwood, NJ/Mainland Regional
Alessandra Rodrigues	Fr.	Foil	Bloomington, NJ
Jennifer Silva	Sr.	Sabre	Newark, NJ/Science Park



MEN'S RESULTS

11/12	North American Cup	8am
<i>Haverford Invitational</i>		
11/17	vs. Johns Hopkins	L, 8-19
	at Haverford	L, 12-15
	vs. William & Mary	W, 17-10
	vs. Maryland	W, 15-12
	vs. Virginia	W, 18-9
<i>Lafayette Invitational</i>		
11/18	at Lafayette	W, 14-13
	vs. Drew	L, 13-14
	vs. Rutgers	W, 16-11
	vs. Cornell	W, 14-13
<i>Columbia Invitational</i>		
11/30	at Columbia	L, 10-17
	vs. Stevens	L, 12-15
<i>MACFA – B vs. C (at Stevens)</i>		
1/13	MACFA – B vs. C	10am
<i>Philadelphia Invitational (at Temple)</i>		
1/26	vs. Duke	L, 6-21
	vs. Haverford	L, 7-20
	vs. North Carolina	L, 7-20
	vs. UPenn	L, 6-21
	vs. Sacred Heart	L, 4-23
<i>Stevens Invitational</i>		
2/10	at Stevens	L, 11-16
	vs. Hunter	W, 17-10
	vs. Army	L, 11-16
	vs. Yeshiva	W, 23-4
3/3	MACFA Championships	All Day
3/9	NCAA Regional	All Day

WOMEN'S RESULTS

11/9-12	North American Cup (Virginia Beach, VA)	All Day
<i>Haverford Invitational</i>		
11/17	at Haverford	L, 8-19
	vs. Johns Hopkins	L, 5-22
	vs. Maryland	W, 15-12
	vs. William & Mary	W, 14-13
	vs. Virginia	L, 13-14
<i>Lafayette Invitational</i>		
11/18	at Lafayette	W, 14-13
	vs. Yeshiva	W, 16-11
	vs. Drew	L, 11-16
	vs. Rutgers	L, 9-18
<i>Columbia Invitational</i>		
11/30	at Columbia	L, 2-25
	vs. Tufts	W, 15-12
12/2	NIFWA Christmas Invitational	8am
<i>Philadelphia Invitational (at Temple)</i>		
1/26	vs. Haverford	L, 8-19
	vs. Johns Hopkins	L, 6-21
	vs. North Carolina	L, 8-19
2/9	NJIT Invitational	All Day
3/2	NIFWA Championships	All Day
3/10	NCAA Regional	All Day

PROGRAM HISTORY

MEN

YEAR	W-L	COACH	CAPTAINS	MVP
1935-36	4-6			---
1936-37	4-6			---
1937-38	9-1			---
1938-39				---
1939-40	7-1			---
1940-41	6-2			---
1941-42	7-0			---
1942-43		no team – World War II		
1943-44		no team – World War II		
1944-45		no team – World War II		
1945-46		no team – World War II		
1946-47	3-1	Smith		---
1947-48	5-4	Smith (8-5)		---
1948-49	5-0	Pelegrino Ringi		---
1949-50	9-0	Pelegrino Ringi		---
1950-51	8-0	Pelegrino Ringi		---
1951-52	8-1	Pelegrino Ringi	Hamilton Bowser,	---
1952-53	7-1	Pelegrino Ringi (37-2)		---
1953-54	7-1	Paul Hausser		---
1954-55	5-3	Paul Hausser		---
1955-56	6-2	Paul Hausser		---
1956-57	8-1	Paul Hausser		---
1957-58	7-2	Paul Hausser		---
1958-59	6-2	Paul Hausser		---
1959-60	8-2	Paul Hausser		---
1960-61	7-1	Paul Hausser		---
1961-62	10-3	Paul Hausser		---
1962-63	8-5	Paul Hausser		---
1963-64	7-5	Paul Hausser		---
1964-65	6-5	Paul Hausser		---
1965-66	7-6	Paul Hausser		Stan Karamanol
1966-67	7-6	Paul Hausser	Bruce Killy, Oleg Moiseenko	Oleg Moiseenko
1967-68	7-6	Paul Hausser		Len Teslenko
1968-69	8-3	Paul Hausser		Mike Morse
1969-70	7-6	Paul Hausser		George Martinez
1970-71	8-4	Paul Hausser		Greg Soriano
1971-72	11-1	Paul Hausser		Garbor Hauer
1972-73	7-7	Paul Hausser		Gary Marso
1973-74	4-8	Paul Hausser		Jay Haase

YEAR	W-L	COACH	CAPTAINS	MVP
1974-75	6-6	Paul Hausser		Jay Haase
1975-76	3-8	Paul Hausser		Jerry Spiesback
1976-77	6-6	Paul Hausser		Bob Lynch
1977-78	5-4	Paul Hausser		Peter Wessner
1978-79	3-7	Paul Hausser		Bob Lynch
1979-80	4-7	Paul Hausser		Bob Lynch
1980-81		Paul Hausser		Steve Colucci
1981-82		Paul Hausser	Steve Colucci	Steve Colucci
1982-83		Paul Hausser		Peter An
1983-84		Paul Hausser		Ron Heisler
1984-85	1-8	Paul Hausser		Ron Heisler
1985-86	2-9	Bob Lynch	Ernie DeRosa	Ernie DeRosa
1986-87	1-9	Bob Lynch	Ernie DeRosa	David Cruz
1987-88	1-9	Bob Lynch		Saul Cruz
1988-89	1-9	Bob Lynch	Chris Kaplonski	Chris Kaplonski
1989-90	2-10	Bob Lynch	Mohammed Shafaie	Wayne Holness
1990-91	4-11	Bob Lynch (11-57)	Stephen Muccione	Mohammed Shafaie
1991-92*	10-4	George LaTorre	Patrick Clune, Fabian Herrera	Patrick Clune
1992-93*	11-6	George LaTorre (21-10)	P. Clune, J. Javier, F. Herrera	Patrick Clune
1993-94		Vladimir Lilov		Jeff Day
1994-95	5-10	Craig Garretson		David Johnson
1995-96	5-10	Craig Garretson	Geovani Morales	Edwin Herrera
1996-97		Craig Garretson	Idan Mandelbaum	Idan Mandelbaum
1997-98	4-12	Craig Garretson	Idan Mandelbaum	Hans Gangwar
1998-99	6-11	Craig Garretson		George Lane
1999-2000	5-11	Idan Mandelbaum		Thomas Nemeth
2000-01	2-16	Idan Mandelbaum (7-27)		Ian LaFond
2001-02	3-15	J. Mlynek/W. Rak	Chris Aliprantis	Ian LaFond
2002-03	9-5	Janusz Mlynek	Chris Aliprantis, Ian LaFond	Phil Dolata
2003-04	5-8	Janusz Mlynek	P. Dolata, M. Edzenga, I. LaFond	Phil Dolata
2004-05	6-11	Janusz Mlynek	Matt Edzenga, Michael Goldsmith	---
2005-06	0-12	Mac Shaker	Rob Tani, Michael Konchalski	Rob Tani
2006-07	1-14	Janusz Mlyneck	Rob Tani	Rob Tani
2007-08	1-17	Yefim Litvan	Javier Vasques	---
2008-09	6-18	Yefim Litvan	Zachary Hvizdak	
* IAC Champion				
2009-10	9-10	Yefim Litvan	Zachary Hvizdak	---
2010-11	6-12	Yefim Litvan	Max McDermott	---
2011-12	6-12	Yefim Litvan	Max McDermott	---
2012-13	8-12	Yefim Litvan	Max McDermott	Guillaume Lanteri

PROGRAM HISTORY

W O M E N

YEAR	W-L	COACH	CAPTAINS	MVP
1982-83		Bob Lynch		Miya Fennar
1988-89	---	Bob Lynch	none	Sarah Rees
1989-90	0-??	Bob Lynch		Ana Sofia Nola
1990-91	0-??	Frank Wadas		Ellen Duffy
2003-04	1-9	Janusz Mlynek	Crystal Cooper	Deepti Sanjai
2004-05	1-10	Janusz Mlynek	Michelle Paulter	Deepti Sanjai
2005-06	1-10	Mac Shaker	Deepti Sanjai, Nyakiyo Kairu	Deepti Sanjai
2006-07	0-10	Janusz Mlynek	Jennifer Olsztyn	Jennifer Olsztyn
2007-08	0-2	Yefim Litvan	Nicole Fagundo	---
2008-09	0-3-1	Yefim Litvan	Vanessa Jorge	---
2009-10	1-16	Yefim Litvan	---	---
2010-11	4-9	Yefim Litvan	Jennifer Ramos	
2011-12	3-6	Yefim Litvan	Jennifer Ramos	---
2012-13	6-10	Yefim Litvan	Julia Aronov	Julia Graham

Note: All blank information is not on file. Anyone with documentable proof of missing information is asked to contact NJIT Sports Information at (973) 596-8324 or pillari@njit.edu

NJIT HALL OF FAME

Name	Grad. Year	Contribution	Sport (s)	Years Active	Year of Induction	Name	Grad. Year	Contribution	Sport (s)	Years Active	Year of Induction
BAKUN, Andrew I.	1982	Athlete/Asst. Coach	M-Soccer	1978-81/ 90-91	2005	IRIS, Herb	1951	Benefactor	--	--	2007
BAKUN, Myron	1967	Athlete	M-Soccer	1964-66	1991	KAMINSKY, Nicholas J.	1978	Athlete	Baseball	1975-78	2006
BARTH, Roland E.	1960	Athlete	M-Fencing	1957-59	2009	KASBARIAN, Raymond P.	1966	Founder/Athlete	Judo	1962-66	1989
			M-Soccer	1956-59		KETZNER, Robert Shelby	--	Coach	Rifle	1962-86	1987
BAUDER, Fred "Coach"	--	Coach	M-Basketball	1932-61	1989	KHOWAYLO, Alex	1969	Athlete	M-Soccer	1960-63	1996
BLUM, Raymond E.	1950	Distinguished Alumnus	Speedskating/ Cycling	--	1996	LUBETKIN, Charles "Tudy"	1953	Athlete	M-Basketball/ M-Track	1949-52	1994
BORJA, Hernan "Chico"	1981	Athlete	M-Soccer	1977-80	1986	LYNCH, Robert K.	1984	Athlete/Coach	M-Fencing	1977-80/ 86-91	1993
BORNAKO, Gregory "Egor"	1970	Athlete	M-Fencing	1966-70	1987	MacDONALD, Dan	1984	Athlete	Baseball	1981-84	1992
BOWSER, Hamilton V.	1952	Athlete	M-Fencing	1948-52	1989	OLSEN, Richard J.	1969	Athlete	M-Basketball	1965-69	1988
BRADLEY, Thomas	1978	Athlete	M-Swimming	1974-78	1990	OLSON, George R.	1977	Athlete	Baseball	1974-77	1987
BROWN, Andrew D.	1963	Athlete	M-Soccer	1956-59	2006	PAULIUS, Raymond V.	1985	Athlete	M-Soccer	1980-83	2006
CRIMMINS, David	1952	Athlete	M-Fencing	1948-52	2007	RODGERS, Tarik	1996	Athlete	M-Volleyball	1992-95	2010
CRUZ, Edward	1963	Athlete	M-Soccer	1959-62	1995	ROGERS, Warren	1988	Athlete	M-Basketball	1983-87	1993
DAWSON, Marilyn E.	1986	Athlete	WVB/WBKB/SB	1982-86	1991	ROMULUS, Rudy	1991	Athlete	M-Volleyball	1988-91	1996
DeNICOLA, Carmine P.	1978	Athlete	Baseball	1975-78	2005	ROSS, Jonathan A.	1956	Athlete	M-Soccer	1953-55	2010
DeNURE, Dave	--	Coach	M-Volleyball W-Volleyball W-Basketball	1982-98 1986-90 1987-88	2009	SARLO, Paul A.	1992	Athlete	Baseball	1989-91	2005
						SCHMID, John "Gene"	--	Asst Coach/Coach	Baseball	1968-72/ 73-97	2002
DeVITO, Louis	1960	Athlete	M-Soccer/ M-Fencing	1956-60	1992	SIMON, J. Malcolm	--	Coach	M-Soccer	1955-83	1994
DIAS, Joe A.	1977	Athlete	M-Soccer	1973-76	1993			Director of Athletics	--	1983-94	
DRURY, Eugene M.	1963	Athlete	M-Tennis	1960-63	1988	SKURLA, Peter J.	1941	Athlete	Bowling	1937-41	1992
ENG, Katherine	1993	Athlete	W-Volleyball	1989-92	2007	SORIANO, Gregory	1975	Athlete	M-Fencing	1968-72	2010
ETIENNE, Yves	1979	Athlete	M-Volleyball	1976-78	1990	SWANSON, Robert F.	--	Director of Athletics	--	1947-82	1986
FEHN, Gilbert F.	1940	Athlete	M-Basketball/ M-Tennis	1936-40	1992	TAETZSCH, Robert	1952	Athlete	M-Fencing	1948-52	2007
						TAETZSCH, William	1952	Athlete	M-Fencing	1948-52	2007
FITZGERALD, Joseph M.	--	Coach/Asst. Coach	M-Basketball	1961-66/ 52-61	1986	TOSATO, Lawrence P.	1956	Athlete	M-Basketball/ Baseball	1952-56	1987
FLEISHER, Seymour "Zoom"	1951	Athlete	M-Basketball	1947-51	1992	TUBELLO, Jeffrey	1976	Athlete	Rifle	1972-76	1988
GAGLIARDO, Salvatore A.	1985	Athlete	M-Basketball	1981-85	1995	VAN WRIGHT, Nevea	1997	Athlete	W-Basketball	1991-96	2005
GALLAGHER, Thomas G.	1985	Athlete	M-Basketball	1981-85	1991	WALSH, John J.	1966	Athlete	MSoc/MBKB/ Baseball	1962-66	1986
GIOVANNOLI, Arnold L.	1953	Athlete	M-Basketball	1950-53	1993						
GOLDRICK PITT, Elizabeth M.	1990	Athlete	W-Volleyball/ Softball/WBKB/WTen	1985-90	1995	WASNIEWSKI, Frank	1980	Athlete	M-Tennis	1977-80	1990
						WELGOS, Bob	1962	Athlete	M-Basketball/ Bowling	1959-62	2005
GRAZIANO, Jean M.	1989	Athlete	Softball	1986-89	2009	WOROBEC, Myron S.	1966	Athlete	M-Soccer	1962-65	1994
GRUENEWALD, Wendy A.	1997	Athlete	WBKB/Softball/ W-Volleyball/W-Soccer	1992-96	2003	YONEZUKA, Yoshishada	--	Founder/Coach	Judo	1962-?	1991
HAASE, Jay W.	1975	Athlete	M-Fencing	1971-75	1988	ZORN, Werner	1962	Athlete	M-Soccer	1958-61	1988
HAMMOND, Kenneth W.	1979	Athlete	M-Soccer	1974-77	2003						
HANDWERKER, Andy	1963	Athlete	M-Soccer	1959-62	2002						
HAUSSER, Paul C.	--	Administrator Coach	-- Fencing/Baseball	1953-91 1954-88/53-72	1990	Teams	Year	Accomplishments		Year of Induction	
HUBEY, Ali	1972	Athlete	M-Soccer	1968-71	1990	Men's Soccer	1960	NAIA co-National Champion		1988	
HURTADO, Fabian	1975	Athlete	M-Soccer	1970-74	1987	Men's Basketball	1981-82	NJIT's first ECAC and IAC champion		1990	
						Baseball	1982	NJIT's second ECAC and IAC champion		1993	

Athletic Administration & Coaching Staff

SENIOR ADMINISTRATION

Lenny Kaplan	Director of Athletics
Alexis Schug	Associate Athletic Director/ Senior Women Administrator
Joe Caiola	Assistant Director of Athletics/Business/Facilities
Tim Camp	Assistant Athletic Director for Sports Information
Jayson Smikle	Assistant Athletic Director for Compliance
Wenda Noel-Lane	Administrative Assistant for the Director of Athletics
Mike Siegel	Faculty Athletic Representative
Brian Callahan	Senior Women Administrator Assistant Director of Physical Education

ACADEMIC SUPPORT

Sandra Taylor	Associate Director CAPE – Athlete Academic Advisor
Mike Spisto	Eligibility Certification Officer/Academic Advisor for Athletics

ATHLETIC TRAINING

Matt Koscs	Head Athletic Trainer
Paul Grayner	Assistant Athletic Trainer
Melissa Maskery	Assistant Athletic Trainer
Brittany Vorndran	Assistant Athletic Trainer

COMPLIANCE

Alexis Schug	Associate Athletic Director/ Senior Women Administrator
Jayson Smikle	Assistant Athletic Director for Compliance

DEVELOPMENT

Darlene Lamourt	Development Officer for Athletics
-----------------	--------------------------------------

FLEISHER ATHLETIC CENTER

Shannon Abraham	Operations Manager/Tickets
Jonathan Walker	Front Desk
Courtney Caden	Receptionist

SPORTS INFORMATION

Tim Camp	Assistant Athletic Director for Sports Information
Stephanie Pillari	Assistant Sports Information Director

STRENGTH AND CONDITIONING

Dan Huff	Head Strength and Conditioning Coach
----------	-----------------------------------------

COACHING STAFF DIRECTORY

BASEBALL

Brian Guiliana	Head Coach
Robbie McClellan	Assistant Coach

MEN'S BASKETBALL

Jim Engles	Head Coach
Brian Kennedy	Assistant Coach
Jesse Agel	Assistant Coach
Michael Brown	Assistant Coach
TJ Tibbs	Director of Basketball Operations

WOMEN'S BASKETBALL

Steve Lanpher	Head Coach
Mark McCaleb	Assistant Coach
LaKea Jones	Assistant Coach
Epiphany Smith	Assistant Coach

MEN'S & WOMEN'S CROSS COUNTRY

Al Alonso	Head Coach
John Crawford	Assistant Coach

MEN'S AND WOMEN'S FENCING

Yefim Litvan	Head Coach
Jason Henderson	Assistant Coach

MEN'S SOCCER

Didier Orellana	Head Coach
David Janezic	Assistant Coach
Hernando Santamaria	Assistant Coach

WOMEN'S SOCCER

Mandi Riden	Head Coach
Erwin van Bennekom	Assistant Coach
Katrina Smedley	Assistant Coach
Tim Verschuren	Volunteer Coach

MEN'S SWIMMING & DIVING

Michael Lawson	Head Coach
Mark Albright	Assistant Coach
Daniel Schittone	Assistant Coach
Anthony Cacella	Volunteer Diving Coach

MEN'S AND WOMEN'S TENNIS

Mike Sowter	Head Coach
Carmen Selaru-Stewart	Assistant Coach
Bernie Jones	Assistant Coach

MEN'S AND WOMEN'S TRACK AND FIELD (INDOOR & OUTDOOR)

Al Alonso	Head Coach
John Crawford	Assistant Coach

MEN'S VOLLEYBALL

Ryan McNeil	Head Coach
Francesca Garay	Graduate Assistant Coach

WOMEN'S VOLLEYBALL

JR Martins	Head Coach
Poline Mackiewicz	Assistant Coach

Directions to NJIT

FOR GPS USERS

The address for Lubetkin Field at Mal Simon Stadium, the Estelle and Zoom Fleisher Athletic Center, and the Naimoli Family Athletic and Recreational Facility is 80 Lock Street, Newark, NJ, 07102.

BY CAR

New Jersey Turnpike: Driving North from South Jersey: Take NJ Turnpike to Exit 13A Newark Airport. After toll stay to left and follow signs to Rt. 1 & 9 North. You will merge onto Rt. 1 & 9 North. Airport will be on right. Follow signs for downtown Newark and Rt. 21 North-(left lane exit ramp). Downtown Newark will be in front of you. NYC will be off to your right. Follow Rt. 21 North (McCarter Highway). Turn left on Raymond Blvd. Follow Raymond Blvd. past Warren Street traffic light and Fleisher Athletic Center, Naimoli Center, and Lubetkin Field at Mal Simon Stadium will be to your right (one soccer goal line runs along Warren Street and the soccer sideline parallels Lock Street).

New Jersey Turnpike: Driving South from North Jersey: Take exit 15W to Route 280 West, then follow Route 280 West directions.

Route 280 West: After drawbridge, take Exit 15A (Rt. 21 South - McCarter Highway). Follow Rt. 21 South to Raymond Blvd. Turn right on Raymond Blvd. Follow Raymond Blvd. past Warren Street traffic light and Fleisher Athletic Center, Naimoli Center, and Lubetkin Field at Mal Simon Stadium will be to your right (one soccer goal line runs along Warren Street and the soccer sideline parallels Lock Street).

Route 280 East: Take Exit 15 (Rt. 21 South - McCarter Highway). Follow Rt. 21 South to Raymond Blvd. Turn right on Raymond Blvd. Follow Raymond Blvd. past Warren Street traffic light and Fleisher Athletic Center, Naimoli Center, and Lubetkin Field at Mal Simon Stadium will be to your right (one soccer goal line runs along Warren Street and the soccer sideline parallels Lock Street).

Garden State Parkway (North & South bound): Take exit 145 to Route 280 East, then follow Route 280 East directions.

Route 1 & 9 North & South: Take exit marked Newark, Rt. 21 North (McCarter Highway). Follow Rt. 21 North (McCarter Highway). Turn left on Raymond Blvd. Follow Raymond Blvd. past Warren Street traffic light and Fleisher Athletic Center, Naimoli Center, and Lubetkin Field at Mal Simon Stadium will be to your right (one soccer goal line runs along Warren Street and the soccer sideline parallels Lock Street).

Route 78 East: Take Route 78 East to Rt. 21 North. Turn left on Raymond Blvd. Follow Raymond Blvd. past Warren Street traffic light and Fleisher Athletic Center, Naimoli Center, and Lubetkin Field at Mal Simon Stadium will be to your right (one soccer goal line runs along Warren Street and the soccer sideline parallels Lock Street).

Route 22 East: Take Route 22 East to Route 21 North. Turn left on Raymond Blvd. Follow Raymond Blvd. past Warren Street traffic light and Fleisher Athletic Center, Naimoli Center, and Lubetkin Field at Mal Simon Stadium will be to your right (one soccer goal line runs along Warren Street and the soccer sideline parallels Lock Street).



Route 21 North: Follow Rt. 21 North to Raymond Blvd. Turn left onto Raymond Blvd. Follow Raymond Blvd. past Warren Street traffic light and Fleisher Athletic Center, Naimoli Center, and Lubetkin Field at Mal Simon Stadium will be to your right (one soccer goal line runs along Warren Street and the soccer sideline parallels Lock Street).

Route 21 South: Follow Rt. 21 South (McCarter Highway) to Raymond Blvd. Turn Right on Raymond Blvd. Follow Raymond Blvd. past Warren Street traffic light and Fleisher Athletic Center, Naimoli Center, and Lubetkin Field at Mal Simon Stadium will be to your right (one soccer goal line runs along Warren Street and the soccer sideline parallels Lock Street).

New York Thruway: Thruway to Exit 14A, Garden State Parkway. Follow Garden State Parkway directions above.

George Washington Bridge: NJ Turnpike South to Exit 15W. Follow Route 280 West directions above.

Lincoln Tunnel: West on Rt. 3 to Rt. 21 South. Turn right onto Raymond Blvd. Follow Raymond Blvd. past Warren Street traffic light and Fleisher Athletic Center, Naimoli Center, and Lubetkin Field at Mal Simon Stadium will be to your right (one soccer goal line runs along Warren Street and the soccer sideline parallels Lock Street).

From Brooklyn, Queens and Long Island: Take Verrazano-Narrows Bridge (Interstate 278) and follow 278 across Staten Island. Cross Goethels Bridge. Follow signs to New Jersey Turnpike North then follow New Jersey Turnpike directions above.

PARKING

Bus/Van Parking: Visiting buses and vans may usually park on Lock Street adjacent to the athletic center. Please be careful not to block the parking space reserved for the doctor.

Visitor Parking: Visitor parking may be reserved in advance through your host. Otherwise, visitor parking at NJIT is available in the NJIT parking deck. Turn right onto Warren Street. Turn right onto Colden Street and proceed around the block to Summit Street. Parking Deck entrance is located to your right before the intersection with Warren Street.

Parking for on-campus athletic contests: NJIT is offering free off-street parking for fans attending regular season home soccer and volleyball matches and basketball games. The parking entrance, marked by a yellow sign is located on New Street.

OTHER TRANSPORTATION SYSTEMS

Newark Liberty International Airport: Minutes from the NJIT campus. A minibus (Newark Airlink) or taxi service connects the airport with Penn Station in Newark. Bus, Newark Light Rail, and taxi connections are available at the station.

Newark Penn Station: Located in downtown Newark, connections to the NJIT campus may be made by bus, Newark Light Rail, or taxi.

Morris & Essex Broad Street Station: A five-block walk to the NJIT campus via MLK Boulevard to Central Avenue. Taxi service is also available.

Newark Light Rail: From Penn Station in Newark, take the Warren Street stop for the NJIT campus. The Warren Street stop is on the sidewalk behind the press box for Lubetkin Field at J. Macolm Simon Stadium.

HOTELS DOWNTOWN

Hilton Newark Gateway
Gateway Center, Raymond Boulevard & McCarter Highway
Newark, NJ, 973/622-5000

Robert Treat Hotel
50 Park Place, Newark, NJ, 973/622-1900

Hampton Inn & Suites Newark Riverwalk
100 Passaic Ave, Harrison, NJ, 973/483-1900

NEAR NEWARK LIBERTY INTERNATIONAL AIRPORT

Best Western Newark Airport West
101 International Way, Newark, NJ, 973/621-6200

Hilton Newark Airport
1170 Spring Street, Elizabeth, NJ, 908/351-3900

Holiday Inn Newark Liberty International Airport
160 Frontage Road, Newark, NJ, 973/589-1000



2013-14 Highlanders Women's Fencing

Back Row (l-r): Assistant Coach Jason Henderson, Margaret Christian, Mia Marshall, Abigail Bazile, Jennifer Silva, Opeyemi Alade, Head Coach Yefim Litvan

Front Row (l-r): Michelle Potestio, Hannah Huan, Vivan Hawn, Jiaxi Dang, Julia Aronov, Jennifer Ligo



2013-14 Highlanders Men's Fencing

Back Row (l-r): Assistant Coach Jason Henderson, Alex Sadowski, Ian Pershad, Maxwell Miller, David Kong, Matt Downey, Mike Jurewicz, Ryan Hrapsky, Bryan Ransinangue, Head Coach Yefim Litvan

Front Row (l-r): Andrew Truong, Edward He, Christian Aldover, Ian Constantin, Shivank Mishra

2013-14 HIGHLANDERS FENCING

NOVEMBER

North American Cup (Cleveland, OH)

8-11 North American Cup (D1 & Junior) **M, W**

Columbia Invitational (New York, NY)

22 Columbia, Princeton **W**

22 Columbia, Princeton, Stevens **M**

Johns Hopkins Invitational (Baltimore, MD)

24 vs. Johns Hopkins, Army, Yeshiva, Virginia, Navy **W**

MACFA B vs. C (at Johns Hopkins, Baltimore, MD)

24 vs. Johns Hopkins, Maryland, William & Mary, Virginia, Navy **M**

DECEMBER

8 NIWFA Christmas Invitational (at Rutgers, Piscataway, NJ) **W**

JANUARY

11 Alumnae Day (Newark, NJ) **M, W**

26 Penn Invitational (Philadelphia, PA) **M, W**

FEBRUARY

2014 Eric Sollee Invitational (at Brandeis University, Waltham, MA)

1 Brandeis, Boston College, Brown, Haverford, MIT, Stevens **M, W**

MACFA B Round Robin (at Stevens)

1 Stevens, Yeshiva, Army, Hunter **M**

NJIT Invitational (Newark, NJ)

16 Queens, Fairleigh Dickinson, Lafayette, Rutgers, Army **W**

16 Drew, Lafayette, Rutgers, Cornell **M**

MARCH

1 NIWFA Championships (at Army, West Point, NY) **W**

1 MACFA Championships (at Army, West Point, NY) **M**

8 NCAA Regional Championships **M, W**

20-23 NCAA Championships (at Ohio State) **M, W**

Head Coach: Yefim Litvan
Assistant Coach: Jason Henderson