



FENCING 2012



NJITHIGHLANDERS.COM



NJIT

MANAGEMENT

NJIT

SCIENCE &
LIBERAL ARTS

ARCHITECTURE

NEW JERSEY INSTITUTE OF TECHNOLOGY

About NJIT	2-3
University Administration	4-5
Student-athlete support	6-7
Athletics Senior Staff	7
NJIT in Division I	8-9
Head Coach Yefim Litvan	10
Assistant Coaches	11
Rosters	12
2010-11 Results	13
Program History	14-15
Athletics Facilities	16-18
About Newark	19
Sports & Entertainment Around Newark	20-21
Hall of Fame	22
Directions to NJIT	23

MEDIA INFORMATION

This guide is designed to assist in coverage of NJIT fencing. For home matches, the NJIT sports information office will provide official results approximately 10 minutes following each event. Coach Yefim Litvan and requested fencers will be available for interviews following a 10-minute cooling off period. Radio broadcast requests should be made at least 10 business days prior to the contest. Requests for coach and player interviews on nongame days should be made through the NJIT sports information office (973-596-8461).

CREDITS

The 2012 NJIT Fencing Guide is a production of the NJIT Sports Information Office in cooperation with the Office of Strategic Communications. Written and edited by Tim Camp and Stephanie Pillari. Cover and interior design by Karyn Olsen Designs. NJIT photographs and information courtesy of the Office of Strategic Communications. All interior team and action photography by Larry Levanti. Red Bull Arena photo (p. 21) courtesy of Getty Images/RBNY.

WHY THE HIGHLANDERS?

The home of NJIT, University Heights, was formerly known as the Newark Highlands and NJIT's mailing address used to be High Street, until the thoroughfare was renamed in memory of Dr. Martin Luther King, Jr.



In 2006-07, NJIT athletics, in keeping with its move to NCAA Division I, unveiled a new graphic identity, which includes a new Highlanders logo (shown). Developed by CN Foundry for NJIT, the logo depicts the traditional Highlander, whose ferocity and bravery against all odds are the stuff of legend.

QUICK FACTS

Location: University Heights, Newark, NJ

Founded: 1881

Enrollment: 5,924 (undergraduate)

NJIT website: www.njit.edu

Nickname: Highlanders

Colors: Red and White with Navy accent

Home Field: Fleisher Multi-Purpose Room

Affiliations: NCAA Division I, ECAC

Conference: Great West Conference

Interim President: Joel Bloom, EdD

Director of Athletics: Lenny Kaplan

Athletic Department Phone: 973-596-3636

Sports Information

NJIT Athletics website: www.njithighlanders.com

Results hotline: 973-596-5555

Assistant AD for Sports Information: Tim Camp

Phone/Email: 973-596-8461/timothy.camp@njit.edu

Assistant SID: Stephanie Pillari

Phone/Email: 973-596-8324/pillari@njit.edu

Fencing

Head Coach (alma mater, year): Yefim Litvan

Phone/Email: 973-596-8490; litvan@njit.edu

Career Record: 13 NCAA berths in 13 seasons at Rutgers

Assistant Coaches: Jason Henderson

Men's Captain: Max McDermott

Women's Captain: Jennifer Ramos

First Year of Program: Men 1935-36; Women 1982-83

Home Arena: Fleisher Multi-Purpose Room

Affiliation: NCAA National Collegiate

Men's Conference: Middle Atlantic Collegiate Fencing Association

Women's Conference: National Intercollegiate Women's Fencing Assoc.

2010-11 Records: Men 6-12; Women 4-9

On the cover: (left to right): Jalia Graham, Christian Aldover

Inside back cover: 2012 Men's and Women's Fencing Teams

ABOUT NJIT

NJIT is New Jersey's Science & Technology University. With roots going back to 1881, when it was founded as Newark Technical School, New Jersey Institute of Technology observed its 125th anniversary in 2006.

Located in University Heights, Newark, NJ, home to more than 30,000 college students, NJIT's campus is just 10 miles from New York City.

Playing a critical role in shaping New Jersey's future, NJIT, as a major public technological university, is an important pipeline for the flow of technology into society. The university's educational programs prepare students to be leaders in the technology-dependent economy of the 21st century. University researchers seek new knowledge to improve processes and products for industry. Through public and private partnerships and economic development efforts, the university helps to grow new business ventures that fuel the economy.

In recent years, NJIT has put more than \$83 million toward new and improved buildings and facilities on the 45-acre campus, including biomedical engineering labs and a campus center.

Instructional Programs

NJIT offers an ever-expanding array of educational programs. As of 2011, NJIT lists 57 bachelor's degree majors, 57 master's degree programs and 21 doctoral programs -- through six schools: — through six schools:



**Newark College of Engineering
College of Architecture and Design
College of Science and Liberal Arts
School of Management
Albert Dorman Honors College
College of Computing Sciences**

NJIT has over 400 full-time faculty; more than 98 percent of whom hold the highest degree in their field. The student-faculty ratio is 13:1, with over 6,000 undergraduate students and nearly 3,000 graduate students. Our students hail from more than 30 states and more than 100 countries to rank eighth in the nation for diversity.

Albert Dorman Honors College enrolls more than 500 students who take advantage of honors courses, research opportunities, advising and mentoring. Honors College students have SAT scores ranking in the top 10 percent nationally.

With more than 44,000 alumni, NJIT is rated by *US News and World Report* as a top-tier national research university offering bachelor's, master's and doctoral degrees. In the 2010 edition of *US News and World Report's* Annual Guide to America's Best Colleges, NJIT ranked 115 among

the nation's best national universities. It was NJIT's fifth consecutive year on the top tier list.

NJIT was named by *The Princeton Review* as one of the country's best 376 institutions for undergraduate education in the annual college guide for 2012 and on *PrincetonReview.com* one of 220 "best" institutions in the Northeast. Only 15 percent of America's 2,500 four-year colleges and three colleges outside the USA are profiled in the book, which profiles and rates schools.

Research

In 2009, NJIT's research expenditures topped \$92 million and faculty members welcome student collaboration on research projects.

Economic Development

NJIT is committed to economic development for Newark and the region. The university operates several outreach centers that provide direct technical assistance to the state's businesses with the goal of helping small and medium-sized companies. NJIT is also the home of New Jersey's oldest and largest incubator facility, and was one of the first institutions in the nation to adopt economic development as a fourth mission element, together with instruction, research and community service. More than 60 technology start-up companies, many of which hire NJIT students, are on campus.

The Career Edge

NJIT offers degrees in nine of the 11 "most wanted" degrees in '11, according to the National Association of Colleges and Employers, which conducts annual surveys of businesses to track hiring expectations. The average starting salary offers for the top 11 fields in the 2011 survey ranges from over \$46,000 to a high of over \$63,000 (for computer science majors).

Computer and data processing services lead the list of the 10 fastest-growing occupations in projections compiled by the US Department of Labor.

As technology changes all fields, those with science and technology backgrounds are positioned to lead. Among the CEOs of the S&P 500 companies, engineering is the single



ABOUT NJIT

largest undergraduate degree and more than half of CEOs have undergraduate degrees in engineering, business management, science, math and computing.

The Global Edge

The diversity in NJIT's student body and faculty prepares graduates to understand and succeed in the global marketplace. NJIT was named among the world's top 500 universities in a study by the Institute of Higher Education, Shanghai Jiao Tong University.

The Technology Edge

NJIT has been designated one of the nation's most technologically sophisticated universities by Forbes.com and a Princeton Review survey and the university has received major funding from the National Science Foundation and the National Security Agency in recent years.

The Academic Edge

NJIT has long been a national leader in applying new technologies and approaches to the educational experience. NJIT was a pioneer in requiring computer science for students in all majors and the School of Architecture has led innovations in teaching CAD and digital design. The school's innovative "paperless" first-year program was recently cited by Campus Technology Magazine.

Students have a wide range of educational choices in building an interest-tailored program. Among their options are cross-enrolling at neighboring Rutgers to enrich their program with subjects such as music and languages.

NJIT students learn emerging technologies from the researchers behind the technologies, developing valuable marketplace skills. Real-world experience through experiential learning makes graduates more marketable, with many co-op opportunities leading to permanent jobs.

The Regional Edge

New Jersey, with America's highest concentration of pharmaceutical, hi-tech, biotech, and medical device companies is the place



to study technology. It has the nation's highest per capita number of engineers and scientists as residents, while also leading in per capita rate of patents issued. Further, the Newark-New York region is a living laboratory for architecture and building sciences, environmental engineering and transportation.

The Research Edge

NJIT has been designated by the State of New Jersey as the Homeland Security Technology Systems Center and NJIT operates the world-renowned Big Bear Solar Observatory.

A History of NJIT

From the Industrial Revolution to the Information Age, New Jersey Institute of Technology has a rich history with its beginnings developing from the industrial age.

In 1881, an act of the New Jersey State Legislature, recognizing an urgent need, sought a home for what would be the state's technical school. The efforts of Newark's public and private sectors resulted with

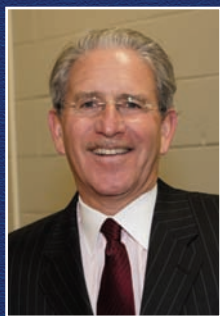
the opening of Newark Technical School, addressing the state's need.

Over time, the university expanded its curriculum and mission. In 1919, the university established baccalaureate programs in three engineering fields. By the middle of the 20th century, Newark Technical School was transformed into the robust Newark College of Engineering.

The post-war period was one of enormous activity with regular expansion of the campus, as well as the introduction of doctoral level programs. In 1975, with the addition of the New Jersey School of Architecture, the institution had evolved into a technological university, emphasizing a broad range of degrees and dedication to significant research and public service. Newark College of Engineering, stronger than ever, remained intact, but a new university name -- New Jersey Institute of Technology -- reflected the institution's expanded mission.

A broadened mission called for the creation of a residential campus and the opening of NJIT's first dormitory in 1980 began a period of steady growth that continues. Two new schools were established during the 1980s--the College of Science and Liberal Arts (1982) and the School of Industrial Management (1988). The Albert Dorman Honors College was established in 1994, and the newest school, the College of Computing Sciences, was created in 2001. Beginning in 2009 the College of Architecture and Design was created to house the New Jersey School of Architecture and the new school of Art and Design.





Dr. Joel Bloom
President

On January 9, 2012, the New Jersey Institute of Technology Board of Trustees voted unanimously to appoint Dr. Joel Bloom as President of the University, effective immediately.

Dr. Bloom, had been serving as Interim President of NJIT since September 28, 2011, following the resignation of the previous president, Robert A. Altenkirch, who had been in that post since July 2002.

Speaking for the NJIT Board of Trustees, Kathleen Wielkopolski said: "It is in the best interest of the university to appoint a president at the earliest possible date to provide stability and continuity to the important work of the university; that is, educating New Jersey's future science and technology leaders, responding to opportunities presented by the governor for workforce and economic development, building NJIT's national academic and research reputation, and proceeding with our ongoing significant fund raising initiatives, specifically, the \$150 million 'NJIT NEXT' campaign."

Bloom, who is NJIT Vice President for Academic and Student Services, as well as founding dean of the Albert Dorman Honors College, is well-positioned to take on this leadership role. Bloom, with a career spanning 20 years at NJIT, is passionate about the university and its students as their education in the sciences, engineering, technology, design and management transforms their future and that of their families.

As Vice President for Academic and Student Services, Dr. Bloom is responsible for eight divisions of the university, including physical education and athletics. In that role, his guidance has been vital in NJIT's transition in intercollegiate athletics to NCAA Division I from Division II, an endeavor that began in earnest following November 2002 discussions among Dr. Bloom, then-President Altenkirch, and Director of Athletics Lenny Kaplan. The transition reached official fruition on September 1, 2009, when the NCAA embraced NJIT as an across-the-board active (full) member of

Division I following completion of a rigorous formal process.

Bloom's impact on the university has been significant. Under his watch, student enrollment increased from 7,600 to over 9,500 students, including increases in female and minority students. The average SAT math score is now in the top quarter nationally; Dorman Honors College enrollment increased 70 percent, totaling 685 with combined average SAT scores over 1335 for fall 2011; articulation agreements are currently signed with the state's high-tech high schools and 19 county colleges; and accelerated joint admission agreements exist with UMDNJ Medical and Dental Schools, St. George's Medical School, SUNY College of Optometry and Seton Hall Law School.

In his role as dean of the Dorman Honors College and Vice President for Student and Academic Services, Bloom has been integral in helping to shape the academic plan for the university. Further, Bloom is leading the development of a Dorman Residential Honors College and the planning for a Greek Village in collaboration with Greek alumni and currently enrolled students. Previously, Bloom led the successful effort to raise \$23M for Dorman Honors College scholarships.

Bloom expanded the Center for Pre-College Programs to help prepare students for the rigors of science, mathematics, engineering and technology education; with the college deans and faculty, he expanded honors courses and undergraduate research, established the university's medical and health committee of faculty to advise and assist undergraduate students entry into graduate and professional schools and to coordinate the health-related NJIT disciplines; he increased retention and graduation rates, and planned residence halls that transformed a commuter campus to one with more than 50 percent of the freshmen living on campus.

As the university proceeds to implement a major comprehensive fundraising campaign, "Dr. Bloom brings an understanding of the university, its history and contacts, and will provide the necessary continuity needed at this time," said Trustee Wielkopolski.

Bloom has served the Newark community through his participation in the development of Science Park High School. He has also initiated multiple programs with the Newark Public

Schools, most recently with the new Central High School—yielding the largest number of enrolled NJIT freshmen from the school. For over a decade, he has served as vice chair of the board for Community and Schools, a national dropout prevention program serving Newark and other urban school districts. He is active in many education organizations including The NJ Presidents' Council Executive Board for New Jersey Edgnet and the executive board of the NSF-funded Philadelphia Alliance for Minority Participation.

He has received national and state education awards, as well as federal, foundation and corporate grant awards. He has published journal articles and presented papers on school improvement, curriculum development, college transition and student assessment.

Prior to joining NJIT, Bloom served seven years as an assistant commissioner for the New Jersey Department of Education for the Division of General Academic Education. He was responsible for managing many of the education department's initiatives during Governor Thomas Kean's administration and was responsible for statewide assessment, curriculum standards, math/science/technology education, and the improvement of urban education through piloting the Effective Schools research and Alternative Education programs.

Formerly a teacher and school administrator in New York City Public Schools, Dr. Bloom was also a director of research and instructor at Teacher's College, Columbia University.

He holds a master's degree and a doctorate from Teacher's College, Columbia University. He also earned master's and bachelor's degrees from Hunter College of the City University of New York.

Upon becoming Interim President, Dr. Bloom announced that Jack Gentul, Dean of Students, will serve as Interim Vice President for Academic and Student Services and that Distinguished Professor of Electrical and Computer Engineering, Atam Dhawan, currently the Associate Dean of the Albert Dorman Honors College, will become the Interim Dean.



Jack Gentul
*Interim Vice President
for Academic and
Student Services*

When Dr. Joel Bloom was named Interim President of NJIT in late September 2011, he turned to veteran administrator Jack

Gentul, the Dean of Students, to fill the role of Interim Vice President for Academic and Student Services.

The Dean of Students at NJIT since 2001, Jack Gentul has a career of more than 30 years in the field of student affairs. After graduating from Binghamton University in 1973 with a degree in theater, he attended Rutgers University, where he received a master's in education in 1979. While doing his graduate work at Rutgers, Gentul worked in both the Dean of Students office and in residence life.

His first professional job was at Rutgers as Livingston Towers Coordinator and Assistant to the Dean for Handicapped Affairs. From Rutgers, he moved to Trenton State College (now the College of New Jersey) where he served as a Residence Area Coordinator from 1980 to 1982.

He next moved to Upsala College in East Orange, NJ, where he served as Assistant Dean for Residence Life. After Upsala, Gentul became the founding Director of the Center for Students with Disabilities at New York University in 1983 and later became the Associate Director of Student Life for NYU. During his stay at NYU, he earned a PhD in Higher Education Administration from the school in 1997.

He was selected in 1999 as Dean for Students at Pace University, Westchester, a position he held until coming to NJIT to serve as Dean of Students at NJIT in 2001.

Two of his children, daughter Adrienne, and son Walker are intercollegiate athletes. Adrienne, who swam and played soccer in high school, was a three-year member of the crew team at Lehigh University. Walker, who played soccer and ran track in high school, is on the track team at Springfield College. Another son, Alex, is completing a graduate degree in education at Rutgers, while son Robert is a student at NYU and is organizing an ultimate frisbee club there.



Lenny Kaplan
Director of Athletics

Since taking over as head of NJIT's division of physical education and athletics in August 2000, Lenny Kaplan has been

instrumental in guiding NJIT's reclassification to NCAA Division I.

Kaplan helped stabilize and expand a program that was entering its fourth year in Division II when he arrived in Newark. In late 2002, after discussions with university President Dr. Robert A. Altenkirch and Vice President Dr. Joel Bloom, Kaplan took on the task of steering NJIT's programs into Division I, a process that reached fruition with the NCAA's granting active Division I status, with full championship eligibility effective September 1, 2009.

Throughout Kaplan's tenure, NJIT has enhanced the athletics program, particularly in areas that benefit the student-athletes directly.

The sports offerings have expanded to the current 18 varsity programs. And since 2004, NJIT has renovated its two main on-campus venues—Lubetkin Field at J. Malcolm Simon Stadium at Lubetkin Field and the Estelle and Zoom Fleisher Athletic Center. Further, the Naimoli Family Recreation Center, a 25,600-square foot facility opened early in 2011 enhanced the recreational and intercollegiate opportunities on campus.

The school also signed a 10-year partnership to play all home baseball in the professional Bears and Eagles Riverfront Stadium and later agreed to host basketball in the new Prudential Center, downtown Newark home of the NHL's New Jersey Devils.

Under Kaplan's leadership, many teams achieved regional and national Division II ranking. Success for several women's teams was unprecedented, with basketball, tennis and soccer all reaching postseason play for the first time in his administration,

Additionally, men's volleyball captured a 2007 divisional championship in the Eastern Intercollegiate Volleyball Association and the next year reached the EIVA playoff semifinals

hosted by eventual 2008 national champion Penn State.

Kaplan guided the Highlanders toward further stability with membership in the newly-expanded all-sports Great West Conference, which offers a conference home for 11 of NJIT's varsity sports.

In 2009-10, NJIT's first year as a full active member of Division I, the women's volleyball team and senior Sabrina Baby became the school's first national statistical champions at the Division I level, as team and individual leaders, respectively, digs per set. Baby was honored as the school's first CoSIDA Academic All-America in the Division I era, earning third-team national honors.

Christian Baumbach, a sophomore at the time, made history in 2009 as NJIT's first individual conference champion at the Division I level, when he won the Great West Conference men's cross country race. He also won the prestigious IC4A University Division race in the 101st annual running of that contest.

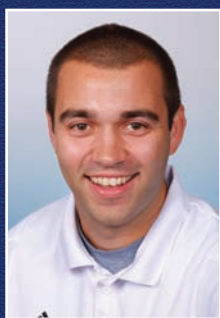
In 2010-11, the Highlanders earned their first-ever Division I conference team championship when women's tennis captured the Great West title in May.

NJIT's outstanding home facilities will allow it to host conference championships in the Great West Conference and allowed it to host ECAC postseason championships in 2005-06.

Before coming to NJIT, Lenny Kaplan served 11 years at Manhattan College, where he began as Manhattan's director of operations and was assistant athletics director from 1991-2000.

Kaplan, a 1988 graduate of St. John's University with a degree in athletics administration, resides in Merrick, NY, with his wife, Nancy, and their sons, Michael and Joshua.

STUDENT-ATHLETE SUPPORT



Matt Koscs



Paul Grayner



Sandra Brendle

Sports Medicine

NJIT sports medicine is moving forward with expanded facilities and a staff of three full-time trainers led by head trainer Matt Koscs, MS/ATC, with assistant trainers Paul Grayner, MEd/ATC, and Sandra Brendle, MSED/ATC. They work with team physicians Louis Rizio, MD, and Stephen Matta, DO.

Matt Koscs, who earned both his bachelor's and master's degrees from the University of Delaware, has served NJIT as head trainer since July 2009, a year after he joined the staff as an assistant trainer. As an undergrad at Delaware, he was recipient of the Paris Delligatti Memorial Award for Excellence in Athletic Training.

Prior to NJIT, he served three years as head trainer at Hodgson Vocational Technical High School in Newark, DE. He also worked with soccer clubs in Delaware and was employed at Christiana Care Physical Therapy Plus, in Newark, DE.

Paul Grayner, who holds a bachelor's degree from Saint Leo College in Florida and a master's from American University in Washington, DC, has a diverse background in athletic training, having served at the college and professional levels, as well as in a fitness center setting. He joined the NJIT staff late in 2008.

From the mid-1970s to the mid-1980s, he was a trainer in the minor league systems of the New York Yankees and New York Mets and in 1984 he was assistant trainer with the Mets. He later worked with the Long Island Knights professional basketball team.

Adelphi and FDU.

Sandra Brendle, who joined the NJIT staff as an assistant trainer in the summer of 2009, earned her bachelor's degree, majoring in athletic training, from Greensboro (NC) College in 2007. She earned her master's in athletic training at Old Dominion University in May 2009. At ODU, she worked with seven teams and was on the medical staff for the 2008 NCAA Division I Women's Basketball Tournament first and second rounds. At Greensboro, she was 2006 Athletic Training Student of the Year and worked on the 2004 NCAA Division III Men's and Women's Soccer Championship tournament medical staff.

Dr. Louis Rizio is a board certified orthopedic surgeon and is fellowship trained in the field of sports medicine. He is a graduate of Rutgers and after earning his medical degree from the UMDNJ/New Jersey Medical School, Dr. Rizio completed his orthopedic residency at Tufts University in Boston.

He then completed a sports medicine fellowship at the University of Miami and was assistant team physician of the Hurricanes, as well as the Miami Dolphins, the Miami Hurricanes.

Dr. Rizio practices at the New Jersey Sports Medicine Institute in Livingston, NJ. Prior to starting his own practice, Dr. Rizio was the Chief of Sports Medicine at the NJ Medical School from 2000-2005. He is affiliated with four New Jersey hospitals: St. Barnabas Medical Center (Livingston); Short Hills Medical Center (Short Hills); Mountainside Hospital (Montclair); and, Overlook Hospital (Summit).

At the collegiate level, he was head trainer at Fairleigh Dickinson University in Teaneck, NJ from 1989 to 1998 and earlier worked as an assistant trainer at Hofstra,

Dr. Stephen Matta, who is board certified in family medicine, currently specializes in primary care sports medicine at Mountainside Hospital in Montclair, NJ, a post he assumed after three years in the family practice residency program at Valley Baptist Medical Center in Harlingen, TX. He is a 2007 graduate of a five-year DO/MBA dual degree program with Philadelphia College of Osteopathic Medicine for his medical degree and Saint Joseph's University for an MBA in healthcare administration. He is a 2002 magna cum laude graduate of Duquesne University in Pittsburgh, with a BS in honors chemistry. He and his family reside in Belleville, NJ.

Strength and Conditioning

Strength and conditioning is a key part of a successful Division I program, with an eye toward maximizing individual and team performance in competition. The strength and conditioning coach also works closely with the Athletic Training Staff

in the areas of injury prevention and injury rehabilitation.



Dan Huff

The 2008-09 year brought another dimension to NJIT athletics with the hiring of *Dan Huff*, CSCS, as the program's first full-time strength and conditioning coach.

In addition to the hiring of a full-time coach to coordinate the strength and conditioning, NJIT renovated the weight rooms and purchased new equipment, with the area dedicated to use by the Highlander teams.

Huff previously served five years as strength and conditioning coordinator at Fairleigh Dickinson University in Teaneck, NJ, from 2003 to 2008, working with an 18-sport NCAA Division I program.

Huff was Sports Performance Director for Velocity Sports Performance in Wall, NJ, immediately before accepting his position at

STUDENT-ATHLETE SUPPORT

NJIT. He is a graduate of William Paterson University of New Jersey. He holds numerous certifications.

Academic Enrichment

NJIT's Center for Academic and Personal Enrichment (CAPE) added a new component in 2007 with the addition of an Associate Director position that was created for the specific purpose of serving the needs of NJIT's student-athletes.

The position focuses on five key areas: academic support, career development, personal development, leadership and community service including the Student-Athlete Advisory Committee and CHAMPS Life Skills for NJIT's nearly 300 student-athletes.

Sandra Taylor filled the post in January 2010, having previously spent her professional career at Manhattan College, which is also her alma mater.

Working at Manhattan, a founding member of the Metro Atlantic Athletic Conference, Taylor was most recently Associate Director of Athletics and Senior Woman Administrator, filling those posts from 1996 to 2010.

For much of that time (1995-2003), she was Chief Athletic Department Compliance Officer. She began her service at Manhattan as Athletic Department Ticket Manager, serving in that capacity from 1993 to 2003.



Sandra Taylor

She served on numerous NCAA, conference and internal college committees, including service on the NCAA Division I Management Council from 2004 to 2007 and as chair of the NCAA Women's Lacrosse Committee from 2002 to 2006.

She earned both her bachelor's degree in secondary education and her master's degree in special education from Manhattan College and is a doctoral candidate in educational leadership at St. Mary's University in Winona, MN.

Sandra and her husband, Ken, who is Associate Commissioner for Men's Basketball and Baseball at the MAAC, reside in Monroe Township, NJ, with their daughters, Katherine, who was born in May 2004, and Samantha, who was born in July 2009.

New to the staff in 2011-12 is *Elizabeth Bookwalter*, the eligibility certification officer/academic advisor, who brings a wealth of experience to her post at NJIT.



Elizabeth Bookwalter

Most recently before coming to NJIT, she worked from March 2009 to 2011 in the NCAA Eligibility Center as Associate Director of Client Relations/Coordinator of Customer Service.

She is a journalism graduate of The Ohio State University and she earned her master's degree from the University of Tennessee with a concentration in sport management.

At Ohio State, she was a student intern in the Athletic Communications Office and she was a graduate assistant for compliance at Tennessee, while also working as a project leader/project assistant for the legal firm Vorys, Sater, Seymour and Pease, LLP.

She began full-time work in NCAA compliance at American University in Washington, DC, in 2006, before joining the compliance office at Florida State University, where she served from September 2006 to March 2009.

NJIT's Center for Academic and Personal Enrichment, headed by Dr. Marybeth Boger, is a resource available to all students within NJIT's Student Services Division. The CAPE provides academic support services and activities to enhance students' academic and professional development and it works with academic and administrative departments to help students develop the necessary analytical and problem-solving skills to become independent learners.

CAPE provides tutoring, student success workshops and testing accommodations.

ATHLETICS SENIOR STAFF



Alexis Schug
Assoc. Director of Athletics/SWA
(973) 596-8452
schug@njit.edu



Joe Caiola
Asst. Director of Athletics/
Business & Facilities
(973) 642-7224
caiola@adm.njit.edu



Tim Camp
Asst. Director of Athletics/
Sports Information
(973) 596-8461
timothy.camp@njit.edu

NJIT AND NCAA DIVISION I

Beginning on September 1, 2009, the entire NJIT athletics program officially gained across-the-board active membership in NCAA Division I, completing a process that began officially in 2003.

NJIT, its teams, and student-athletes enjoy the full benefits of Division I membership, including eligibility for Division I postseason championship competition and the inclusion of the Highlanders among the national Division I leaders in statistics maintained by the NCAA.

Within months of NJIT's active Division I membership, the school won its first national Division I statistical championships, as women's volleyball player Sabrina Baby led the nation in digs per set, while she and her teammates captured the team digs crown for digs, as well.

The NCAA's decision making NJIT a full member of Division I completed a specific timetable that required NJIT and its Department of Athletics to meet a series of annual benchmarks before proceeding to the next step.

Edward He



background photo Macarena Maldonado

NJIT, which previously competed in NCAA Division II, first moved to reclassify its men's soccer program in 2003. The move grew out of November 2002 meetings among President Robert A. Altenkirch, Vice President Joel Bloom, and Director of Athletics Lenny Kaplan. From there, came a proposal from Dr. Altenkirch to the Board of Trustees, which unanimously approved in February 2003 a plan to reclassify men's soccer to Division I. Little more than two years later, the NCAA approved NJIT's proposal to begin advancing its entire program to Division I.

Men's soccer achieved active Division I status in 2005 and NJIT women's soccer became postseason-eligible in 2007. The remainder of NJIT's athletics program also began reclassifying in 2005, with active status taking longer for an entire program than under the single-sport-per-gender track used for the two soccer teams.

In 2005-06 the lion's share of the competition for all but men's soccer came at the Division II level. In 2006-07, 2007-08, and 2008-09, NJIT's teams competed at the Division I level and complied full with NCAA Division I rules, but were not eligible for championships at the top level.

Every facet of the program has been enhanced in the reclassification, with a special emphasis placed on student-athlete welfare. Facility upgrades have gone along with sports medicine staff expansion, a strength and conditioning program, and academic enrichment. NJIT has also built a model NCAA Division I rules compliance regimen within its athletics program and across the entire university.

A key late benchmark in reclassification came in the spring of 2009, with NJIT's successful completion of the NCAA Division I certification self-study. An in-depth project that takes approximately one year to complete and involves an on-campus visit from a Peer Review team, Division I certification, renewable every 10 years, is required of all active Division I institutions.

"We completed a major milestone in demonstrating that we have the infrastructure in place and the commitment to compete at the highest levels, not only academically but now athletically as well," said Dr. Altenkirch, who made upgrading athletics a priority from the beginning of his tenure as the seventh President of NJIT in May 2002.

Professor Robert English, the NCAA Faculty Athletics Representative and Interim Dean of the School of Management, added, "I am very impressed with NJIT's

NJIT AND NCAA DIVISION I

student-athletes who have worked hard to meet the challenge of the heightened level of Division I competition and at the same time continued to excel academically, with many athletes earning academic honors and awards and several earning perfect 4.0 GPAs during the semester of competition.”

Further, the NJIT Board of Trustees embraced the transition to Division I as part of the university’s strategic plan to enhance the quality of campus life in NJIT’s transition to a residential university.

Going back to early announcements of NJIT’s NCAA reclassification plans, Altenkirch stated: “As NJIT continues to grow academically, and as a residential university, strengthening the athletics program through the transition to Division I will allow us to align the university with our academic peers.”

Already, NJIT’s teams have competed throughout the United States, taking on opponents from schools that are instantly

Jaila Graham



background photo Guillaume Lanteri

recognizable for their stature in academics and athletics.

NJIT teams and student-athletes have faced opponents from seven of the eight Ivy League schools (all except for Brown, which will be the opening opponent for Highlander women’s basketball in 2011-12) and all eight Patriot League schools, including Army and Navy, Bucknell, Lafayette, and Lehigh.

In addition, Highlander teams have taken on squads from such famed conferences as the Atlantic Coast Conference, Big East Conference, Big Ten Conference, Big 12 Conference, and Pac 10 Conference.

Two high-profile opponents--Maryland in men’s soccer in 2005 and Penn State in men’s volleyball in 2008—won national championships following the same regular seasons in which they faced NJIT.

The Highlanders have also competed against members of all of the conferences based in the Northeastern and Mid-Atlantic regions of the United States, including America East, Atlantic 10, Colonial, Metro Atlantic, Mid-Eastern, and Northeast.

The eighth New Jersey-based institution in Division I, NJIT has competed against all seven of its home state peers, including Big East programs Rutgers and Seton Hall.

NJIT’s longest-established Division I program, men’s soccer, gained its first win against a Big East foe in 2008, defeating Rutgers a year after topping San Diego State for the Highlanders’ first win over a Top 25-ranked team.

NJIT began play as a core member of its first Division I conference, the Great West Conference, which began full competition in 2009-10. In the spring of 2011, the second season for the GWC, the Highlanders celebrated their first Division I team championship, when women’s tennis captured the Great West title.

With its place in Division I officially certified by the NCAA, NJIT looks ahead to continued growth. That outlook is consistent with President Altenkirch’s frequently expressed view that, “the transition to Division I is just that, a transition, a process rather than an event.”

For his part, Director of Athletics Lenny Kaplan said: “We are looking forward to being a solid and successful member of Division I and we are excited by the opportunity to write a new chapter in the history of NJIT athletics.”



FENCING 2012



Head Coach Yefim Litvan

Yefim Litvan, who has coached internationally for the United States in two Olympic Games and who recently completed a highly successful tenure as a college head coach at Rutgers University, became head coach of the men's and women's fencing teams at New Jersey Institute of Technology in 2007.

Litvan, who was honored as 2007 Coach of the Year by the United States Fencing Association, entered college coaching in 1990. Since then, he has guided championship-level teams and individuals in both men's and women's fencing and in all three weapons of the sport--sabre, foil and epee.

An émigré from the former Soviet Union, Litvan became an assistant at the University of Pennsylvania in 1990, remaining there until being named head coach at Rutgers in New Brunswick, NJ, in June 1994. He was head coach of Rutgers until 2007 and then joined the NJIT staff.

He joined the United States National Team program in 1995 and was a coach in the 1996 and 2000 Olympic Games. Litvan, who also coached in the World University Games and in the Pan American Games, was on the US coaching staff for the fencing World Championships from 1995 to 1999.

In addition to his college and national team work, Litvan has coached at the New York Athletic Club since 1995 and worked with three fencers who have combined to compete in five Olympic Games, while combining to win six United States national championships.

In 13 years as coach at Rutgers, Litvan led his teams to 13 berths in the NCAA national championships. The teams consistently finished in the top 15 and made the top 10 in seven NCAA tournaments.

In the March 2007 NCAA national championships, Litvan guided his team to a 12th-place finish. It was the final varsity fencing competition for Rutgers, which announced last year that it was eliminating six varsity intercollegiate sports, including fencing.

In 2003, under his tutelage, women's fencer Alexis Jemal, who had not competed interscholastically prior to college, captured the individual NCAA championship in the women's sabre. In 1996, Litvan's Rutgers team won the NCAA team championship in another weapon of fencing, the epee.

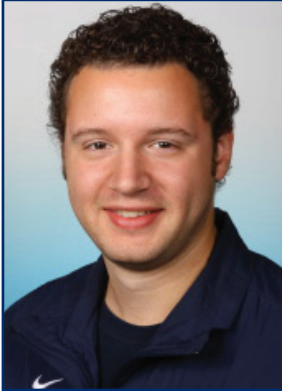
In four years at Penn, Litvan coached three All-Americans and two Ivy League team champions. The Penn women's team was second in the 1994 NCAA championship and the Penn sabre team was second at the NCAAs in 1993 and third in 1994.

Litvan's coaching career began in the former Soviet Union in 1959, when he was based in Ukraine. Before immigrating to the United States, more than 20 of his protégés achieved the rank of Master of Sports in the former USSR.

At NJIT, he leads a sport with one of the longest, richest traditions at the school, with records dating back to 1935-36 on the men's side. A separate women's program was founded in 1982-83 and competed until 1990-91. The women's program was re-established in 2003-04 and continues as a Highlander varsity sport.



COACHING STAFF



Jason Henderson

Assistant Coach, Men and Women

Jason Henderson, a star fencer for four years under the tutelage of Yefim Litvan at Rutgers University, was reunited with his old coach in the summer of 2010, signing on as an assistant coach at NJIT on the staff headed since 2007 by Litvan.

Henderson, who graduated from Rutgers cum laude in January 2008, was a two-time NCAA All-American and four-time NCAA National Championship participant in a four-year career from 2003 to 2007.

A three-year team captain, Henderson graduated with 3.65 cumulative GPA with a double major in sports management and philosophy, making the dean's list for eight semesters and earning numerous awards for academic excellence and leadership.

Henderson was a member of the National Society of Collegiate Scholars; Rutgers Fencing MVP in 2004; Dean's Award for Co-Curricular Excellence; SAAC representative; Cap and Skull Honor Society; Athletic Director's Excellence Award; and, Chi Alpha Sigma—National Athlete Honor Society.

He went on to graduate school, earning a Master of Management Studies in May 2010 from Duke University's Fuqua School of Business.

He is co-founder and director of Air Castles and Slides, LLC, and ACVI Internet and Business Services, LLC, both based in Edison, NJ.

Henderson resides in Piscataway, NJ.



FENCING 2012

2012 ROSTERS

MEN'S ROSTER

Name	Yr.	Event	Hometown/High School
Christian Aldover	Jr.	Sabre	Wayne, NJ / Wayne Hills
Peter Besada	Sr.	Epee	Rutherford, NJ / Rutherford
Greg Biondo	Sr.	Epee	Mount Arlington, NJ / Roxbury
Dylan Carr	Jr.	Sabre	Glen Gardner, NJ / Voorhees
Matthew DeVenjo	Sr.	Foil	Little Falls, NJ / Passaic Valley
Michael Hamfeldt	Sr.	Foil	Morristown, NJ / Morristown
David Hatke	Jr.	Sabre	Greenford, NJ / Morris Knolls
Edward He	So.	Epee	Livingston, NJ / Livingston
Guillaume Lanteri	Fr.	Epee	Paris, France / Lycée Carnot Cammer
Max McDermott	Jr.	Foil	Clinton, NJ / North Hunterdon
Ian Pershad	Fr.	Foil	Montclair, NJ / Montclair
Bryan Ransinangue	So.	Sabre	Wayne, NJ / Wayne Hills
Tony Sorgi	Sr.	Foil	Glen Gardener, NJ / Voorhees
Dan Wolfenden	Fr.	Epee/Foil	Oxford, NJ / Warren Hills Regional

WOMEN'S ROSTER

Name	Yr.	Event	Hometown/High School
Opeyemi Alade	So.	Sabre	Belleville, NJ / Belleville
Julia Aronov	Fr.	Epee	Forest Hills, NY / Francis Lewis
Lauren Dupuis	Sr.	Foil	Tuckerton, NJ / Pinelands Regional
Jaila Graham	Sr.	Epee	Linden, NJ / Linden
Breanna Gunnarson	So.	Sabre/Foil	Longmont, CO / Silver Creek
Hannah Huan	Fr.	Foil	Franklin Lakes, NJ / Bergen County Academics
Jennifer Ligo	Fr.	Sabre/Foil	Dayton, NJ / South Brunswick
Macarena Maldonado	Sr.	Epee	Oakland, NJ / Indian Hills
Yashil Mudaliar	Jr.	Sabre	Mumbia, India / Jamnabai Narsee School (Mumbai)
Crystal Ramjattan	So.	Foil	Englewood, NJ / Teaneck
Jennifer Ramos	Sr.	Foil	Newark, NJ / Benedictine Academy
Jennifer Silva	So.	Sabre	Newark, NJ / Science Park

FENCING 2012



2010 - 2011 RESULTS

MEN'S RESULTS

Date	Invitational	Time/Result
10/15-17	North American Cup	All Day

Temple Open

11/7	Temple Open	10:00am
------	-------------	---------

Drew Invitational

11/21	Drew Invitational at Drew	W 15-12
	vs. Hunter (at Drew)	W 18-9
	vs. Rutgers (at Drew)	L 13-14
	vs. Maryland (at Drew)	W 18-9

Philadelphia Invitational

1/22	Philadelphia Invitational vs. Penn	L 6-21
	vs. Sacred Heart (at Temple)	L 7-20
	vs. Duke (at Temple)	L 2-25
	vs. John Hopkins (at Temple)	L 5-22
	vs. Drew (at Temple)	L 10-17
	vs. North Carolina (at Temple)	L 5-22

Stevens Invitational

1/30	Stevens Invitational vs. Virginia (at Stevens)	W 21-6
	vs. Haverford (at Stevens)	L 8-19
	vs. Lafayette (at Stevens)	L 11-16
	vs. William & Mary (at Stevens)	W 15-12

MACFA Round Robin

2/13	MACFA (Round Robin) vs. Army (at NJIT)	L 11-16
	vs. Yeshiva (at NJIT)	W 21-6
	vs. Stevens (at NJIT)	L 4-23
	vs. Colgate (at NJIT)	L 8-19

3/6	MACFA Championship (W&M)	10:00am
-----	--------------------------	---------

3/12	NCAA Regional (at Drew)	8:00am
------	-------------------------	--------

WOMEN'S RESULTS

Date	Invitational	Time/Result
------	--------------	-------------

Drew Invitational

11/21	Drew Invitational at Drew	W 15-12
	vs. Rutgers (at Drew)	L 7-17
	vs. Maryland (Drew)	W 16-11

12/2	Queens	Cancelled
------	--------	-----------

12/5	NIFWA Christmas Invitational	10:00am
------	------------------------------	---------

Philadelphia Invitational

1/23	Philadelphia Invitational vs. Johns Hopkins (at Temple)	L 7-20
	vs. Sacred Heart (at Temple)	L 9-18
	vs. North Carolina (at Temple)	L 6-21
	vs. Northwestern (at Temple)	L 4-23
	vs. Haverford (at Temple)	L 7-20

Stevens Invitational

2/13	Stevens Invitational vs. Tufts (at Stevens)	L 10-17
	vs. Stevens (at Stevens)	L 6-21
	vs. FDU (at Stevens)	W 17-9
	vs. Brandies (at Stevens)	L 7-20
	vs. Queens (at Stevens)	W 17-9

3/12	NCAA Regionals	
------	----------------	--



FENCING 2012

PROGRAM HISTORY

MEN Year	W-L	Coach	Captains	MVP
1935-36	4-6			---
1936-37	4-6			---
1937-38	9-1			---
1938-39				---
1939-40	7-1			---
1940-41	6-2			---
1941-42	7-0			---
1942-43		no team – World War II		
1943-44		no team – World War II		
1944-45		no team – World War II		
1945-46		no team – World War II		
1946-47	3-1	Smith		---
1947-48	5-4	Smith (8-5)		---
1948-49	5-0	Pelegrino Ringi		---
1949-50	9-0	Pelegrino Ringi		---
1950-51	8-0	Pelegrino Ringi		---
1951-52	8-1	Pelegrino Ringi	Hamilton Bowser	---
1952-53	7-1	Pelegrino Ringi (37-2)		---
1953-54	7-1	Paul Hausser		---
1954-55	5-3	Paul Hausser		---
1955-56	6-2	Paul Hausser		---
1956-57	8-1	Paul Hausser		---
1957-58	7-2	Paul Hausser		---
1958-59	6-2	Paul Hausser		---
1959-60	8-2	Paul Hausser		---
1960-61	7-1	Paul Hausser		---
1961-62	10-3	Paul Hausser		---
1962-63	8-5	Paul Hausser		---
1963-64	7-5	Paul Hausser		---
1964-65	6-5	Paul Hausser		---
1965-66	7-6	Paul Hausser		Stan Karamanol
1966-67	7-6	Paul Hausser	Bruce Killy, Oleg Moiseenko	Oleg Moiseenko
1967-68	7-6	Paul Hausser		Len Teslenko
1968-69	8-3	Paul Hausser		Mike Morse
1969-70	7-6	Paul Hausser		George Martinez
1970-71	8-4	Paul Hausser		Greg Soriano
1971-72	11-1	Paul Hausser		Garbor Hauer
1972-73	7-7	Paul Hausser		Gary Marso
1973-74	4-8	Paul Hausser		Jay Haase
1974-75	6-6	Paul Hausser		Jay Haase
1975-76	3-8	Paul Hausser		Jerry Spiesback
1976-77	6-6	Paul Hausser		Bob Lynch
1977-78	5-4	Paul Hausser		Peter Wessner
1978-79	3-7	Paul Hausser		Bob Lynch
1979-80	4-7	Paul Hausser		Bob Lynch
1980-81		Paul Hausser		Steve Colucci
1981-82		Paul Hausser	Steve Colucci	Steve Colucci
1982-83		Paul Hausser		Peter An
1983-84		Paul Hausser		Ron Heisler

FENCING 2012



PROGRAM HISTORY

MEN				
Year	W-L	Coach	Captains	MVP
1984-85	1-8	Paul Hausser		Ron Heisler
1985-86	2-9	Bob Lynch	Ernie DeRosa	Ernie DeRosa
1986-87	1-9	Bob Lynch	Ernie DeRosa	David Cruz
1987-88	1-9	Bob Lynch		Saul Cruz
1988-89	1-9	Bob Lynch	Chris Kaplonski	Chris Kaplonski
1989-90	2-10	Bob Lynch	Mohammed Shafaie	Wayne Holness
1990-91	4-11	Bob Lynch (11-57)	Stephen Muccione	Mohammed Shafaie
1991-92*	10-4	George LaTorre	Patrick Clune, Fabian Herrera	Patrick Clune
1992-93*	11-6	George LaTorre (21-10)	P. Clune, J. Javier,	Patrick Clune
F. Herrera				
1993-94		Vladimir Lilov		Jeff Day
1994-95	5-10	Craig Garretson		David Johnson
1995-96	5-10	Craig Garretson	Geovani Morales	Edwin Herrera
1996-97		Craig Garretson	Idan Mandelbaum	Idan Mandelbaum
1997-98	4-12	Craig Garretson	Idan Mandelbaum	Hans Gangwar
1998-99	6-11	Craig Garretson		George Lane
1999-2000	5-11	Idan Mandelbaum		Thomas Nemeth
2000-01	2-16	Idan Mandelbaum (7-27)		Ian LaFond
2001-02	3-15	J. Mlynek/W. Rak	Chris Aliprantis	Ian LaFond
2002-03	9-5	Janusz Mlynek	Chris Aliprantis, Ian LaFond	Phil Dolata
2003-04	5-8	Janusz Mlynek	P. Dolata, M. Edzenga, I. LaFond	Phil Dolata
2004-05	6-11	Janusz Mlynek	Matt Edzenga, Michael Goldsmith	---
2005-06	0-12	Mac Shaker	Rob Tani, Michael Konchalski	Rob Tani
2006-07	1-14	Janusz Mlyneck	Rob Tani	Rob Tani
2007-08	1-17	Yefim Litvan	Javier Vasques	---
2008-09	6-18	Yefim Litvan	Zachary Hvizdak	---
* IAC Champion				
2009-10	9-10	Yefim Litvan	Zachary Hvizdak	---
2010-11	6-12	Yefim Litvan	Max McDermott	---
WOMEN				
Year	W-L	Coach	Captains	MVP
1982-83		Bob Lynch		Miya Fennar
1988-89	---	Bob Lynch	none	Sarah Rees
1989-90	0-??	Bob Lynch		Ana Sofia Nolau
1990-91	0-??	Frank Wadas		Ellen Duffy
2003-04	1-9	Janusz Mlynek	Crystal Cooper	Deepti Sanjai
2004-05	1-10	Janusz Mlynek	Michelle Paulter	Deepti Sanjai
2005-06	1-10	Mac Shaker	Deepti Sanjai, Nyakiyo Kairu	
2006-07	0-10	Janusz Mlynek	Jennifer Olsztyn	Deepti Sanjai
2007-08	0-2	Yefim Litvan	Nicole Fagundo	Jennifer Olsztyn
2008-09	0-3-1	Yefim Litvan	Vanessa Jorge	---
2009-10	1-16	Yefim Litvan	---	---
2010-11	4-9	Yefim Litvan	Jennifer Ramos	---

Note: All blank information is not on file. Anyone with documentable proof of missing information is asked to contact NJIT Sports Information at (973) 596-8324 or timothy.camp@njit.edu.

ATHLETICS FACILITIES

The New Jersey Institute of Technology teams play home games and practice in a combination of facilities on campus and off.

The on-campus facilities include Lubetkin Field at J. Malcolm Simon Stadium for outdoor sports and the Estelle and Zoom Fleisher Athletic Center for indoor sports. In addition, NJIT in 2011 opened is the Naimoli Family Athletic and Recreational Facility, a multi-purpose indoor facility on the site of the former outdoor tennis courts.

Off-campus venues include Bears and Eagles Riverfront Stadium, a professional minor league stadium that is the home of NJIT baseball; the Prudential Center, home of the NHL Devils and NBA Nets, which has hosted selected NJIT basketball games; and, Branch Brook Park in Newark and Van Cortlandt Park in the Bronx, home sites for NJIT cross country. All except for Van Cortlandt Park are less than two miles from the NJIT campus.



Lubetkin Field at J. Malcolm Simon Stadium

Lubetkin Field at J. Malcolm Simon Stadium

The men's and women's soccer teams play their home games and practice on campus at Lubetkin Field at J. Malcolm Simon Stadium, a first-class venue for college soccer.

The field on the west end of NJIT's University Heights campus is an all-weather facility, with 24/7 availability for competition or practice. Outfitted with SprinTurf artificial grass in the summer of 2004, Lubetkin Field at J. Malcolm Simon Stadium also includes lighting for night contests, bleacher seating for more than 1,000 spectators, a press box and scoreboard.

The fully-enclosed facility, with its entrance a few feet opposite the entrance of the indoor Estelle and Zoom Fleisher Athletic Center, can take its place alongside any college soccer facility in the Northeast.

The home of Highlanders soccer served as the host site for the first-ever Great West Conference women's soccer championship tournament in November 2009. Previously, NJIT hosted the three-day 2005 ECAC Division II women's soccer championship tournament.

In the fall of 2005, when the Northeast was hit with record rainfall, games went on

without a hitch at Lubetkin Field, thanks to the quality of the surface. Indeed, with the rain disrupting schedules around the region, some crucial Big East contests involving Seton Hall were moved to NJIT's home field. Those games, too, went off without a hitch.

Estelle and Zoom Fleisher Athletic Center

The NJIT men's and women's basketball teams and men's and women's volleyball teams play their home games in the Fleisher Athletic Center gymnasium, while the swimming team competes and practices in building's pool. The Fleisher Center also houses intercollegiate fencing, as well as all athletic department offices, varsity and general weight and fitness rooms, and the athletic training room.

In the summer of 2006, the gym underwent renovation to include installation of a new floor and baskets, new lighting, new sound system and new scoreboards, along with entirely new seating for approximately 1,500 spectators after the first phase of renovation. The back bay 'C gym' can be sectioned off from the main competition floor, making the facility useful for intramurals, physical education classes and campus recreation time, while being able to host multiple simultaneous events.

ATHLETICS FACILITIES

A six-lane swimming pool in Fleisher Athletic Center is home to the NJIT swimming team. Fencing has its own area on the second floor of the building.

In addition to all athletic department offices, the Fleisher Athletic Center also houses the sports medicine staff in the Athletic Training Room and the varsity weight room, supervised by the head strength and condition coach. The building's third floor is home to a fitness center, which is open for use by all students and staff.

The Naimoli Family Athletic and Recreation Facility

Opened in 2011, the facility is approximately 25,600 square feet. The Naimoli Family Center will be a multi-purpose space for athletics, community recreation, and gatherings involving large numbers of people.

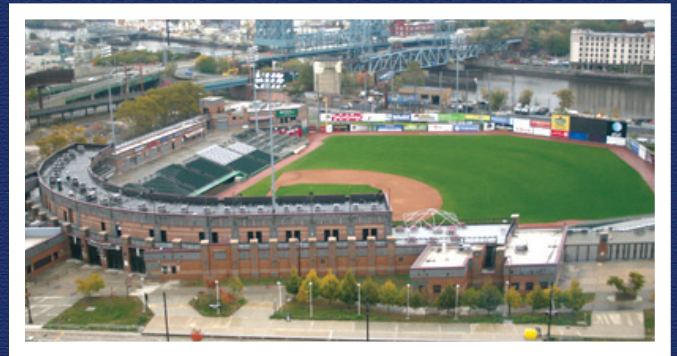
Built on top of the old outdoor tennis courts adjoining the Fleisher Athletic Center, construction of this new building has been made possible, in part, by a generous gift from Vincent Naimoli '62, Chairman and CEO of Anchor Industries International and Chairman Emeritus/ Founder of the Tampa Bay Rays major league baseball team.

The facility houses courts for tennis and is available for other athletic and recreational activities, including practice for basketball and volleyball. It is heated and air conditioned, with flooring appropriate for the intended athletics and recreational activities.

Its indoor tennis courts offer vital year round practice and playing opportunities for NJIT's intercollegiate tennis teams, which have been consistently successful in the transition to Division I. In 2011, the women's tennis team became NJIT's first conference championship team in the Division I era.

Bears and Eagles Riverfront Stadium: Home of the NJIT Highlanders

Joe Torre, then the manager of the New York Yankees, visited New Jersey Institute of Technology on December 8, 2005 to herald a new partnership between NJIT's baseball team, the Highlanders, and the Newark Bears.



Bears and Eagles Riverfront Stadium

Torre, a friend of the Bears and of college baseball, was on hand as the Highlanders signed a 10-year contract to play their home games at Bears & Eagles Riverfront Stadium in Newark.

"I think this partnership is nothing but aces," Torre said during a press conference at NJIT. "It's a partnership between two class organizations that will make for nothing but a lot of fun for everyone."

For the previous two years, the Highlanders played their home games at the stadium. But the team's longer-term commitment to play at the stadium came as NJIT elevated its baseball program to Division I.

"NJIT is bringing Division I baseball to this great stadium," said NJIT President Robert A. Altenkirch, "which will generate the highest level of excitement. It's a great partnership that allows NJIT to play intercollegiate baseball in a great facility, maybe the best for college baseball in the country."

Bears and Eagles Riverfront Stadium, the \$30 million state-of-the-art home of the Newark Bears, officially opened to the public on July 16, 1999.

With a seating capacity of 6,200 Bears and Eagles Riverfront Stadiums affords everyone in attendance an up-close view of the action. The ballpark also has 20 luxury suites, a picnic area, a party deck, a concert stage situated behind the outfield wall and a major league-caliber press box featuring two radio booths and two television booths.



ATHLETICS FACILITIES



The name, Bears and Eagles Riverfront Stadium, honors Newark's rich baseball history. The original Bears were a farm team for the New York Yankees up until 1949 and the Eagles were a very successful Negro League team that played in Newark until 1950.

Prudential Center

In October 2007, the Prudential Center ushered in a new era in sports and entertainment in Newark and the entire northern New Jersey area.

Prudential Center is the cornerstone in the revitalization and renaissance of downtown Newark. In addition to the arena, Newark will soon add scores of condominiums, restaurants, themed bars and mixed retail establishments. Prudential Center, one of the finest arenas in the country, is New Jersey's home for hockey, basketball, concerts and numerous other events.

A public/private partnership between the City of Newark and Devils Arena Entertainment made the \$375 million Prudential Center a reality that is changing the face of downtown Newark and making it a destination place for sports and live entertainment in the region.

"The Rock" is located about a mile from NJIT's University Heights campus and is known best as the home of the National Hockey League New Jersey Devils and now, the home of the National Basketball Association New Jersey Nets.

The arrival of the spectacular Prudential Center nearly coincided with NJIT's arrival as an NCAA Division I institution—the first in Newark and the newest in New Jersey in more than 20 years. The Rock opened one year after NJIT began Division I competition as part of its NCAA reclassification which is now complete.

In the arena's inaugural year, NJIT played host to six basketball games on four dates, including four men's basketball games and two women's games. Included was the first women's basketball game in the building's history, when the Highlanders entertained Cornell on January 15, 2008.

The Highlanders hosted additional basketball games in subsequent years and have played there each year of the building's existence. Further, NJIT's club ice hockey team plays all of its home games

in the full-size Devils practice rink facility (AmeriHealth Pavilion), which adjoins the main arena and has an 800-seat capacity. And one of the special events held in the main arena is NJIT's annual commencement.

Branch Brook Park and Van Cortlandt Park

A hallmark of the NJIT cross country program under veteran coach Al Alonso is its ability to host cross country competition that have made Highlander-sponsored races a popular destination for schools from throughout the New York/New Jersey area.

In 2009, NJIT hosted the Great West Conference championships at Van Cortlandt Park in the Bronx, and the course, which is home to some of the most prestigious events in the sport, is also the home venue for other annual NJIT-hosted races. Branch Brook Park, which is a public park of Essex County, reaches into several towns, including Newark, with the park entrance less than a mile from the NJIT campus.

ABOUT NEWARK



Newark: The Renaissance City

NJIT is located in the heart of New Jersey's largest city, Newark, with a population of over 300,000, making it the 65th-largest city in the United States. A major urban center, Newark is a city on the move.

Attractions in Newark include:

- **The Prudential Center, a major indoor entertainment and sports venue housing New Jersey Devils hockey, New Jersey Nets basketball, major concerts and other premier events**
- **New Jersey Performing Arts Center**
- **The Newark Museum**
- **The Newark Public Library**
- **Symphony Hall**
- **Branch Brook Park**
- **Art galleries, restaurants, shopping**
- **The Ironbound neighborhood, renowned for its dining and vibrant nightlife**
- **An urban architectural laboratory**
- **Professional minor league baseball (Newark Bears)**

Newark: New Jersey's College Town

Some 30,000 undergraduate, graduate, and professional students attend classes in the University Heights section, which is home to NJIT, Rutgers-Newark, the University of Medicine and Dentistry of New Jersey (UMDNJ), and Essex County College.

Adjacent to NJIT to the east, is the Newark campus of Rutgers University and the two schools enjoy an exceptionally close and productive relationship. NJIT and Rutgers students have library privileges at both campuses. NJIT students may also enrich their educational experience by enrolling in Rutgers-Newark courses and in full degree programs in disciplines not offered by NJIT, such as art, music, geology, and psychology.

Each year, the two universities co-sponsor a common season of theatrical productions, as well as 'World Week', a joint program of honors colloquia, and a variety of other cultural and social activities.

NJIT also enjoys a cooperative relationship with its neighbor to the west in the University Heights area, UMDNJ, with several joint degree programs.

New Jersey/New York Metropolitan Region

NJIT and Newark are a part of a region that is a magnet not only to the rest of the United States, but also to the world.



In Newark and neighboring northern New Jersey alone, attractions such as the Prudential Center, New Jersey Performing Arts Center, Meadowlands Sports Complex, Red Bull Arena, Liberty Science Center, and numerous others are minutes away by car and in most cases accessible by public transportation. Literally dozens of shopping malls are within a 20-minute drive of Newark, as well.

Midtown Manhattan, with all that it and the rest of New York City offer, is less than 15 miles from the NJIT campus.

NJIT students have regular access to discount tickets for Broadway shows, museums, concerts, and sporting events.

The school also sponsors weekend trips throughout the northeastern United States, with activities such as skiing, boating, swimming, hiking, and more.

The spectacular Jersey shore is less than an hour away by car and winter sports are within a couple of hours drive to the west and north.



SPORTS & ENTERTAINMENT AROUND NEWARK

NJIT, with its campus in Newark, NJ, sits in a region that abounds with major professional sports unlike any other in the United States and perhaps in the world. There are nine teams in the major professional leagues (MLB, NFL, NBA, and NHL) located in New York City, northern New Jersey and Long Island.

Only one of nine major teams is more than 25 miles from Newark, but most, including the New Meadowlands Stadium (Giants and Jets NFL football), Madison Square Garden (NBA Knicks, NHL Rangers), are much closer.

The three closest professional sports venues (listed below) are within three miles of NJIT's campus and can be accessed in a matter of minutes at low cost by public transportation, beginning with Newark Light Rail, from campus.

Prudential Center

The home of the National Hockey League New Jersey Devils and the New Jersey Nets of the National Basketball Association is in downtown Newark at the corner of Mulberry and Edison streets, about one mile from the NJIT's University Heights campus.

Opened in October 2007, 'The Rock' is the centerpiece of the city's Downtown Core Redevelopment Project. In addition to NHL hockey and NBA basketball, it has hosted numerous entertainment and sporting events, including NJIT basketball.

NJIT played basketball in the Rock in the inaugural year and in each year since. Indeed, NJIT hosted the first women's basketball game ever played in the Prudential Center on January 15, 2008 (NJIT vs. Cornell).

The arena, with full-capacity seating for 18,500 spectators, features a 4,800 square-foot exterior LED screen, as well as the latest in ice-surface technology and a gourmet restaurant overlooking

the ice for Devils games. The building contains 850,000 square feet of space, 9,000 tons of steel, eight million pounds of structural steel and 25,000 cubic yards of concrete.

Red Bull Arena

Located in Harrison, NJ, just across the Passaic River from Newark and less than three miles from the NJIT campus, the new home of the New York Red Bulls (opened in March 2010) sets the standard for soccer venues across North America.

The state-of-the-art soccer-specific facility is a major component of a multi-billion dollar development.

Red Bull Arena has a number of key design elements which give its seating bowl a close-to-the-action feeling and the unique stadium roof design extends from its leading edge over the entire seating bowl and then curve down to the concourse.

The overall seating capacity for soccer is 25,000, including 30 luxury suites (20 lower level and 10 upper level) and 1,116





Red Bull Arena

club seats. Other amenities include three stadium clubs and two retail outlets.

Bears and Eagles Riverfront Stadium

Bears and Eagles Riverfront Stadium, the \$30 million state-of-the-art home of the professional baseball Newark Bears and since 2004 the home of NJIT Highlanders baseball, officially opened to the public on July 16, 1999. With a seating capacity of

6,200, "The Den" affords fans an up-close view of the action. The ballpark also has 20 luxury suites, a picnic area, a party deck, a concert stage situated behind the outfield wall and a major league-caliber press box.

In December 2005, NJIT and the Bears held a joint press conference to herald a new partnership that includes a 10-year deal that extends Bears and Eagles Riverfront Stadium as the home of NJIT Highlanders baseball.

Bears and Eagles Riverfront Stadium





FENCING 2012

NJIT HALL OF FAME

Name	Grad. Year	Contribution	Sport (s)	Years Active	Year of Induction
BAKUN, Andrew I.	1982	Athlete/Asst. Coach	M-Soccer	1978-81/90-91	2005
BAKUN, Myron	1967	Athlete	M-Soccer	1964-66	1991
BARTH, Roland E.	1960	Athlete	M-Fencing	1957-59	2009
			M-Soccer	1956-59	
BAUDER, Fred "Coach"	--	Coach	M-Basketball	1932-61	1989
BLUM, Raymond E.	1950	Distinguished Alumnus	Speedskating/Cycling	--	1996
BORJA, Hernan "Chico"	1981	Athlete	M-Soccer	1977-80	1986
BORNAKO, Gregory "Egor"	1970	Athlete	M-Fencing	1966-70	1987
BOWSER, Hamilton V.	1952	Athlete	M-Fencing	1948-52	1989
BRADLEY, Thomas	1978	Athlete	M-Swimming	1974-78	1990
BROWN, Andrew D.	1963	Athlete	M-Soccer	1956-59	2006
CRIMMINS, David	1952	Athlete	M-Fencing	1948-52	2007
CRUZ, Edward	1963	Athlete	M-Soccer	1959-62	1995
DAWSON, Marilyn E.	1986	Athlete	WVB/WBKB/SB	1982-86	1991
DeNICOLA, Carmine P.	1978	Athlete	Baseball	1975-78	2005
DeNURE, Dave	--	Coach	M-Volleyball	1982-98	2009
			W-Volleyball	1986-90	
			W-Basketball	1987-88	
DeVITO, Louis	1960	Athlete	M-Soccer/M-Fencing	1956-60	1992
DIAS, Joe A.	1977	Athlete	M-Soccer	1973-76	1993
DRURY, Eugene M.	1963	Athlete	M-Tennis	1960-63	1988
ENG, Katherine	1993	Athlete	W-Volleyball	1989-92	2007
ETIENNE, Yves	1979	Athlete	M-Volleyball	1976-78	1990
FEHN, Gilbert F.	1940	Athlete	M-Basketball/M-Tennis	1936-40	1992
FITZGERALD, Joseph M.	--	Coach/Asst. Coach	M-Basketball	1961-66/52-61	1986
FLEISHER, Seymour "Zoom"	1951	Athlete	M-Basketball	1947-51	1992
GAGLIARDO, Salvatore A.	1985	Athlete	M-Basketball	1981-85	1995
GALLAGHER, Thomas G.	1985	Athlete	M-Basketball	1981-85	1991
GIOVANNOLI, Arnold L.	1953	Athlete	M-Basketball	1950-53	1993
GOLDRICK PITT, Elizabeth M.	1990	Athlete	WVB/SB/WBKB/WTen	1985-90	1995
GRAZIANO, Jean M.	1989	Athlete	Softball	1986-89	2009
GRUENEWALD, Wendy A.	1997	Athlete	WBKB/SB/WVB/WSoc	1992-96	2003
HAASE, Jay W.	1975	Athlete	M-Fencing	1971-75	1988
HAMMOND, Kenneth W.	1979	Athlete	M-Soccer	1974-77	2003
HANDWERKER, Andy	1963	Athlete	M-Soccer	1959-62	2002
HAUSSER, Paul C.	--	Administrator	--	1953-91	1990
		Coach	Fencing/Baseball	1954-88/53-72	
HUBEY, Ali	1972	Athlete	M-Soccer	1968-71	1990
HURTADO, Fabian	1975	Athlete	M-Soccer	1970-74	1987
IRIS, Herb	1951	Benefactor	--	--	2007
KAMINSKY, Nicholas J.	1978	Athlete	Baseball	1975-78	2006
KASBARIAN, Raymond P.	1966	Founder/Athlete	Judo	1962-66	1989
KETZNER, Robert Shelby	--	Coach	Rifle	1962-86	1987
KHOWAYLO, Alex	1969	Athlete	M-Soccer	1960-63	1996
LUBETKIN, Charles "Tudy"	1953	Athlete	M-Basketball/M-Track	1949-52	1994
LYNCH, Robert K.	1984	Athlete/Coach	M-Fencing	1977-80/86-91	1993
MacDONALD, Dan	1984	Athlete	Baseball	1981-84	1992
OLSEN, Richard J.	1969	Athlete	M-Basketball	1965-69	1988
OLSON, George R.	1977	Athlete	Baseball	1974-77	1987
PAULIUS, Raymond V.	1985	Athlete	M-Soccer	1980-83	2006
RODGERS, Tarik	1996	Athlete	M-Volleyball	1992-95	2010
ROGERS, Warren	1988	Athlete	M-Basketball	1983-87	1993
ROMULUS, Rudy	1991	Athlete	M-Volleyball	1988-91	1996
ROSS, Jonathan A.	1956	Athlete	M-Soccer	1953-55	2010
SARLO, Paul A.	1992	Athlete	Baseball	1989-91	2005
SCHMID, John "Gene"	--	Asst Coach/Coach	Baseball	1968-72/73-97	2002
SIMON, J. Malcolm	--	Coach	M-Soccer	1955-83	1994
		Director of Athletics	--	1983-94	
SKURLA, Peter J.	1941	Athlete	Bowling	1937-41	1992
SORIANO, Gregory	1975	Athlete	M-Fencing	1968-72	2010
SWANSON, Robert F.	--	Director of Athletics	--	1947-82	1986
TAETZSCH, Robert	1952	Athlete	M-Fencing	1948-52	2007
TAETZSCH, William	1952	Athlete	M-Fencing	1948-52	2007
TOSATO, Lawrence P.	1956	Athlete	M-Basketball/Baseball	1952-56	1987
TUBELLO, Jeffrey	1976	Athlete	Rifle	1972-76	1988
VAN WRIGHT, Nevea	1997	Athlete	W-Basketball	1991-96	2005
WALSH, John J.	1966	Athlete	MSoc/MBKB/Baseball	1962-66	1986
WASNIEWSKI, Frank	1980	Athlete	M-Tennis	1977-80	1990
WELGOS, Bob	1962	Athlete	M-Basketball/Bowling	1959-62	2005
WOROBEC, Myron S.	1966	Athlete	M-Soccer	1962-65	1994
YONEZUKA, Yoshishada	--	Founder/Coach	Judo	1962-?	1991
ZORN, Werner	1962	Athlete	M-Soccer	1958-61	1988
Teams	Year	Accomplishments	Year of Induction		
Men's Soccer	1960	NAIA co-National Champion	1988		
Men's Basketball	1981-82	NJIT's first ECAC and IAC champion	1990		
Baseball	1982	NJIT's second ECAC and IAC champion	1993		

DIRECTIONS TO NJIT

FOR GPS USERS

The address for Lubetkin Field at J. Malcolm Simon Stadium, the Estelle and Zoom Fleisher Athletic Center, and the Naimoli Family Athletic and Recreational Facility is 80 Lock Street, Newark, NJ, 07102.

BY CAR

New Jersey Turnpike: Driving North from

South Jersey: Take NJ Turnpike to Exit 13A Newark Airport. After toll stay to left and follow signs to Rt. 1 & 9 North. You will merge onto Rt. 1 & 9 North. Airport will be on right. Follow signs for downtown Newark and Rt. 21 North (left lane exit ramp). Downtown Newark will be in front of you. NYC will be off to your right. Follow Rt. 21 North (McCarter Highway). Turn left on Raymond Blvd. Follow Raymond Blvd. past Warren Street traffic light and Fleisher Athletic Center, Naimoli Center, and Lubetkin Field at J. Malcolm Simon Stadium will be to your right (one soccer goal line runs along Warren Street and the soccer sideline parallels Lock Street).

New Jersey Turnpike: Driving South from

North Jersey: Take exit 15W to Route 280 West, then follow Route 280 West directions.

Route 280 West: After drawbridge, take Exit 15A (Rt. 21 South - McCarter Highway). Follow Rt. 21 South to Raymond Blvd. Turn right on Raymond Blvd. Follow Raymond Blvd. past Warren Street traffic light and Fleisher Athletic Center, Naimoli Center, and Lubetkin Field at J. Malcolm Simon Stadium will be to your right (one soccer goal line runs along Warren Street and the soccer sideline parallels Lock Street).

Route 280 East: Take Exit 15 (Rt. 21 South - McCarter Highway). Follow Rt. 21 South to Raymond Blvd. Turn right on Raymond Blvd. Follow Raymond Blvd. past Warren Street traffic light and Fleisher Athletic Center, Naimoli Center, and Lubetkin Field at J. Malcolm Simon Stadium will be to your right (one soccer goal line runs along Warren Street and the soccer sideline parallels Lock Street).

Garden State Parkway (North & South

bound): Take exit 145 to Route 280 East, then follow Route 280 East directions.

Route 1 & 9 North & South: Take exit marked Newark, Rt. 21 North (McCarter Highway). Follow Rt. 21 North (McCarter Highway). Turn left on Raymond Blvd. Follow Raymond Blvd. past Warren Street traffic light and Fleisher Athletic Center, Naimoli Center, and Lubetkin Field at J. Malcolm Simon Stadium will be to your right (one soccer goal line runs along Warren Street and the soccer sideline parallels Lock Street).

Route 78 East: Take Route 78 East to Rt. 21 North. Turn left on Raymond Blvd. Follow Raymond Blvd. past Warren Street traffic light and Fleisher Athletic Center, Naimoli Center, and Lubetkin Field at J. Malcolm Simon Stadium will be to your right (one soccer goal line runs along Warren Street and the soccer sideline parallels Lock Street).

Route 22 East: Take Route 22 East to Route 21 North. Turn left on Raymond Blvd. Follow Raymond Blvd. past Warren Street traffic light and Fleisher Athletic Center, Naimoli Center, and Lubetkin Field at J. Malcolm Simon Stadium will be to your right (one soccer goal line runs along Warren Street and the soccer sideline parallels Lock Street).



Route 21 North: Follow Rt. 21 North to Raymond Blvd. Turn left onto Raymond Blvd. Follow Raymond Blvd. past Warren Street traffic light and Fleisher Athletic Center, Naimoli Center, and Lubetkin Field at J. Malcolm Simon Stadium will be to your right (one soccer goal line runs along Warren Street and the soccer sideline parallels Lock Street).

Route 21 South: Follow Rt. 21 South (McCarter Highway) to Raymond Blvd. Turn Right on Raymond Blvd. Follow Raymond Blvd. past Warren Street traffic light and Fleisher Athletic Center, Naimoli Center, and Lubetkin Field at J. Malcolm Simon Stadium will be to your right (one soccer goal line runs along Warren Street and the soccer sideline parallels Lock Street).

New York Thruway: Thruway to Exit 14A, Garden State Parkway. Follow Garden State Parkway directions above.

George Washington Bridge: NJ Turnpike South to Exit 15W. Follow Route 280 West directions above.

Lincoln Tunnel: West on Rt. 3 to Rt. 21 South. Turn right onto Raymond Blvd. Follow Raymond Blvd. past Warren Street traffic light and Fleisher Athletic Center, Naimoli Center, and Lubetkin Field at J. Malcolm Simon Stadium will be to your right (one soccer goal line runs along Warren Street and the soccer sideline parallels Lock Street).

From Brooklyn, Queens and Long Island: Take Verrazano-Narrows Bridge (Interstate 278) and follow 278 across Staten Island. Cross Goethels Bridge. Follow signs to New Jersey Turnpike North then follow New Jersey Turnpike directions above.

PARKING

Bus/Van Parking: Visiting buses and vans may usually park on Lock Street adjacent to the athletic center. Please be careful not to block the parking space reserved for the doctor.

Visitor Parking: Visitor parking may be reserved in advance through your host. Otherwise, visitor parking at NJIT is available in the NJIT parking deck. Turn right onto Warren Street. Turn right onto Colden Street and proceed around the block to Summit Street. Parking Deck entrance is located to your right before the intersection with Warren Street.

Parking for on-campus athletic contests:

NJIT is offering free off-street parking for fans attending regular season home soccer matches, volleyball games and basketball games. The parking entrance, marked by a sign, is located across Warren Street from the soccer field.

OTHER TRANSPORTATION SYSTEMS

Newark Liberty International Airport: Minutes from the NJIT campus. A minibus (Newark Airlink) or taxi service connects the airport with Penn Station in Newark. Bus, Newark Light Rail, and taxi connections are available at the station.

Newark Penn Station: Located in downtown Newark, connections to the NJIT campus may be made by bus, Newark Light Rail, or taxi.

Morris & Essex Broad Street Station: A five-block walk to the NJIT campus via MLK Boulevard to Central Avenue. Taxi service is also available.

Newark Light Rail: From Penn Station in Newark, take the Warren Street stop for the NJIT campus. The Warren Street stop is on the sidewalk behind the press box for Lubetkin Field at J. Malcolm Simon Stadium.

OFFICIAL HOTEL OF THE HIGHLANDERS

SpringHill Suites Newark Liberty International Airport

652 Route 1 & 9 South, Newark, NJ
973/624-5300 (ask for Melanie Schellhas)
ASK FOR SPECIAL NJIT HIGHLANDERS RATE
(discount code NJIS for kings, NJIT for doubles)

DOWNTOWN

Hilton Newark Gateway

Gateway Center, Raymond Boulevard & McCarter Highway
Newark, NJ, 973/622-5000

Robert Treat Hotel

50 Park Place, Newark, NJ, 973/622-1900

Hampton Inn & Suites Newark Riverwalk

100 Passaic Ave, Harrison, NJ, 973/483-1900

NEAR NEWARK LIBERTY INTERNATIONAL AIRPORT

Best Western Newark Airport West

101 International Way, Newark, NJ, 973/621-6200

Hilton Newark Airport

1170 Spring Street, Elizabeth, NJ, 908/351-3900

Holiday Inn Newark Liberty International Airport

160 Frontage Road, Newark, NJ, 973/589-1000



2012 HIGHLANDERS MEN'S FENCING

Back Row (l-r): Assistant Coach Jason Henderson, Ian Pershad, Greg Biondo, Peter Besada, Max McDermott, Guillaume Lanteri, Dan Wolfenden, Edward He, David Hatke, Head Coach Yefim Litvan

Front Row (l-r): Christian Aldover, Bryan Ransinangue, Tony Sorgi



2012 HIGHLANDERS WOMEN'S FENCING

Back Row (l-r): Assistant Coach Jason Henderson, Opeyemi Alade, Jennifer Silva, Macarena Maldonado, Jaila Graham, Jennifer Ramos, Lauren Dupris, Head Coach Yefim Litvan

Front Row (l-r): Crystal Ramjattan, Julia Aronov, Jennifer Ligo, Hannah Huan



2011-12 HIGHLANDERS FENCING

NOVEMBER

20	Sun.	MACFA B Round Robin (at Hunter) (M)	10:00am
		Hunter Invitational (W)	10:00am

DECEMBER

2-4	Sun.-Tue.	NAC Open (Kansas City, MO) (M)	8:00am
4	Sun.	NIFWA Christmas Invitational (W)	8:00am

JANUARY

15	Sun.	Philadelphia Invitational (M/W)	10:00am
29	Sun.	MACFA – B vs. C (at Stevens) (M)	10:00am

FEBRUARY

12	Sun.	MACFA – A vs. B (at Drew) (M)	10:00am
		vs.Lafayette/at Drew (W)	10:00am
26	Sun.	NIFWA (W)	10:00am

MARCH

4	Sun.	MACFA Championships (M)	10:00am
10	Sat.	NCAA Regional (W)	10:00am
11	Sun.	NCAA Regional (M)	10:00am

Head Coach: Yefim Litvan

Assistant Coach: Jason Henderson (Rutgers '08)

Home matches Bold/CAPS at the Estelle and Zoom Fleisher Athletic Center