



NEW JERSEY INSTITUTE OF TECHNOLOGY

WOMEN'S BASKETBALL

2014-15 MEDIA GUIDE



HIGHLANDERS

njithighlanders.com





Follow us on Facebook: <https://www.facebook.com/pages/NJIT-Womens-Basketball/177630402320397>
Follow us on Twitter: <https://twitter.com/njithighlanders>

TABLE OF CONTENTS

About NJIT	2-7
University Administration	8-11
Athletics Senior Staff	11
Sports Medicine	12-13
Strength & Conditioning	14-15
Academic Enrichment	15-16
Remembering Joe Caiola	17
Athletic Administration & Coaching Staff ..	18
NJIT in Division I	19-21
Athletics Facilities	22-26
About Newark	27
Sports & Entertainment Around Newark ..	28-29
Head Coach Steve Lanpher	30-33
Assistant Coaches	34-35
Roster	36
Class Photos	37
Players	38-55
2013-14 Statistics and Results	56
Single Game/Team Records	57
All-Time Career Records	58-59
Division I Career Records	60-61
Single Season Records	62-63
Division I Season Records/Firsts	64-65
Division I Superlatives	66
Year-by-Year	67-71
All-Time Roster	72-73
Awards and Honors	74-75
All-Time Records vs. Opponents	76-77
Hall of Fame	78
Directions to NJIT	79

WOMEN'S BASKETBALL

Head Coach (alma mater, year):

Steve Lanpher (College of St. Joseph (VT), 1987)
Phone/Email: 973-596-3633/lanpher@njit.edu

Career Record: 129-75 (7)

NJIT Career Record: 24-36 (2)

Assistant Coaches: Mark McCaleb (Massachusetts '89), LaKea Jones (VCU '08), Epiphany Smith (Saint Anselm (NH) '12)

Captains: Kim Tullis and Alyssa Albanese

Letter winners returners/lost: 8/3

Starters returners/lost: 3/2

2013-14 record: 8-21

QUICK FACTS

Location: University Heights, Newark, NJ

Founded: 1881

Enrollment: 10,130 (total) 7,286 (undergraduate)

NJIT website: www.njit.edu

Nickname/Colors: Highlanders/
Red and White (Blue accent)

Home Court (capacity):

Estelle and Zoom Fleisher Athletic Center (1,500)

Affiliations: NCAA Division I

University President: Dr. Joel Bloom, EdD

Director of Athletics: Lenny Kaplan

Athletic Department Phone: 973-596-3636

WHY HIGHLANDERS?

The home of NJIT, University Heights, was formerly known as the Newark Highlands and NJIT's mailing address used to be High Street, until the thoroughfare was renamed in memory of Dr. Martin Luther King, Jr.

In 2006-07, NJIT athletics, in keeping with its move to NCAA Division I, unveiled a new graphic identity, which included a new Highlanders logo. Developed by CN Foundry for NJIT, the logo depicts the traditional Highlander, whose ferocity and bravery against all odds are the stuff of legend.

MEDIA RELATIONS

NJIT Athletics website:

www.njithighlanders.com

Facebook & Twitter: @NJITHighlanders

Assistant AD for Sports Information:

Tim Camp, 973-596-8461/timothy.camp@njit.edu

Assistant SID: Stephanie Pillari, 973-596-8324/
pillari@njit.edu

Assistant SID: Courtney Caden, 973-596-8485/
caden@njit.edu

MEDIA INFORMATION

This guide is designed to assist in coverage of NJIT basketball. For home games, the NJIT sports information office will provide official box score 10 minutes following each game. Coach Steve Lanpher and requested players will be available for interviews following a 10-minute cooling-off period. Radio broadcast requests should be made at least 10 business days prior to the contest.

Requests for coach and player interviews on non-game days should be made through the NJIT sports information office (973-596-8461).

CREDITS

The 2014-15 NJIT Women's Basketball Media Guide is a production of the NJIT Sports Information Office in cooperation with NJIT's Office of Strategic Communications. Written and edited by Tim Camp, with Stephanie Pillari. Cover and interior design by Karyn Olsen Design. NJIT photographs and information courtesy of Strategic Communications. All interior team and action photography by Larry Levanti. Red Bull Arena photo (p. 53) courtesy of Getty/Images/RBNY.

On the cover: (l-r): Martina Matejckova, Alyssa Albanese, Nicole Maticka, Kim Tullis

About NJIT



NJIT is New Jersey's Science & Technology University. With roots going back to 1881, when it was founded as Newark Technical School, New Jersey Institute of Technology observed its 125th anniversary in 2006.

Located in University Heights, Newark, NJ, home to more than 30,000 college students, NJIT's campus is just 10 miles from New York City.

Playing a critical role in shaping New Jersey's future, NJIT, as a major public technological university, is an important pipeline for the flow of technology into society. The university's educational programs prepare students to be leaders in the technology-dependent economy of the 21st century. University researchers seek new knowledge to improve processes and products for industry. Through public and private partnerships and economic development efforts, the university helps to grow new business ventures that fuel the economy.

In recent years, NJIT has put tens of millions of dollars toward new and improved buildings and facilities on the 48-acre campus, including biomedical engineering labs and a campus center.

Instructional Programs

NJIT offers an ever-expanding array of educational programs, with many new programs added in the last five years and more to come. In 2014 NJIT lists 125 undergraduate and graduate degree programs through six schools:

- Newark College of Engineering
- College of Architecture and Design
- College of Science and Liberal Arts
- School of Management
- Albert Dorman Honors College
- College of Computing Sciences

NJIT has 277 tenured or tenure track faculty; 99 percent of whom hold doctoral degrees or the highest degree attainable in their field. The student-faculty ratio is 16:1, with over 7,000 undergraduate students and nearly 3,000 graduate students. Our students hail from 33 states and more than 100 countries to rank eighth in the nation for diversity.



Albert Dorman Honors College enrolls more than 500 students who take advantage of honors courses, research opportunities, advising and mentoring. Honors College students have SAT scores ranking in the top 10 percent nationally.

With nearly 50,000 alumni, NJIT is an acclaimed institution.

- *BuzzFeed.com* ranked NJIT as the #1 higher education value nationally when considering annual tuition cost and average starting salary of graduates.
- Top one percent for return on investment and eighth in alumni earning potential among public universities nationwide – *PayScale.com*
- Top 10 percent nationally for return on investment and one of four best buys in New Jersey higher education – *Bloomberg Businessweek*
- Third in nation among America's Most Underrated Colleges – *BusinessInsider.com*
- Top National University – *U.S. News and World Report*
- 149th among national universities overall for its range of undergraduate majors and master's and doctoral degree programs and commitment to groundbreaking research - *U.S. News and World Report*
- An "America's Top College" – *Forbes.com*
- A *Princeton Review* Best College
- Top 200 American research universities – *The Center for Measuring University Performance at Arizona State*
- Top 50 among colleges without a medical school for research expenditures and top 10 among universities whose main research is in engineering – *National Science Foundation*
- Top 10 among technological universities in faculty scholarly productivity – *Academic Analytics*
- Top 100 producers of minority degrees, including fifth in the nation for bachelor's degrees in engineering technologies to all minority students – *Diverse: Issues in Higher Education*

About NJIT

Research

NJIT's research expenditures totaled more than \$110 million in FY2014 and faculty members welcome student collaboration on research projects.

As of September 1, 2014, NJIT had 185 issued U.S. Patents and 133 pending U.S. patent applications.

Economic Development

NJIT is committed to economic development for Newark and the region. The university operates several outreach centers that provide direct technical assistance to the state's businesses with the goal of helping small and medium-sized companies. NJIT is also the home of New Jersey's oldest and largest incubator facility, and was one of the first institutions in the nation to adopt economic development as a fourth mission element, together with instruction, research and community service.

The Enterprise Development Center (EDC) at NJIT is New Jersey's largest high technology and life science business incubator, and one of the largest in the nation. EDC resident companies have attracted more than \$80 million in third-party funding since entering the incubator, and generated revenues of \$50 million last year. The approximately 90 member companies employ roughly 500 people.

The Career Edge

- NJIT was named in the top 1 percent for return on investment and 8th in alumni earning potential among public universities nationwide by *Payscale.com*.
- Students get a head start on their careers through cooperative education, salaried internships that relate specifically to their field of study.
- The 10 fastest-growing occupations for college graduates include NJIT's newest program areas—physician assistant and physical therapy—as well as computer-related occupations.
- Among the CEOs of the S&P 500 companies, engineering is the single most common undergraduate degree (22 percent of the group). More than half of the CEOs have undergraduate degrees in engineering, business management, science, math, or computing.

The Global Edge

The diversity in NJIT's student body and faculty prepares graduates to understand and succeed in the global marketplace.

The Technology Edge

NJIT has been designated one of the nation's most technologically sophisticated universities by *Forbes.com* and a *Princeton Review* survey and the university has received major funding from the National Science Foundation and the National Security Agency in recent years.

The Academic Edge

- NJIT named a Most Wired College by *Princeton Review*.
- NJIT was the first recipient of the Excellence in Technology Education Award presented by New Jersey Technology Council (NJTC), which annually recognizes outstanding technology companies and individuals who contribute to "growth, achievement, and excellence in diverse technology sectors of New Jersey."
- *Forbes.com* and a *Princeton Review* survey designated NJIT as one of the nation's most technologically sophisticated universities based on factors such as the ratio of computers to students, campus-wide and wireless networks, and technology-enhanced learning.
- NJIT has received major National Science Foundation (NSF) funding to define the next generation of computing applications. Most notable is the creation of *SmartCampus*, a wireless peer-to-peer, location-aware community system that immerses students in a world of wearable computers.
- NJIT has been designated a Center of Academic Excellence in Information Assurance (Homeland Security) Education by the **National Security Agency**.
- NJIT partners with Iowa State University in the Center for Information Protection (Homeland Security), an NSF-supported cooperative research center in information assurance.



About NJIT



The Regional Edge

New Jersey, with America's highest concentration of pharmaceutical, hi-tech, biotech, and medical device companies is the place to study technology. It has the nation's highest per capita number of engineers and scientists as residents, while also leading in per capita rate of patents issued. Further, the Newark-New York region is a living laboratory for architecture and building sciences, environmental engineering and transportation. .

The Research Edge

NJIT has been designated by the State of New Jersey as the Homeland Security Technology Systems Center and NJIT operates the world-renowned Big Bear Solar Observatory.

A History of NJIT

From the Industrial Revolution to the Information Age, New Jersey Institute of Technology has a rich history with its beginnings developing from the industrial age.

In 1881, an act of the New Jersey State Legislature, recognizing an urgent need, sought a home for what would be the state's technical school. The efforts of Newark's public and private sectors resulted with the opening of Newark Technical School, addressing the state's need.

Over time, the university expanded its curriculum and mission. In 1919, the university established baccalaureate programs in three engineering fields. By the middle of the 20th century, Newark Technical School was transformed into the robust Newark College of Engineering.

The post-war period was one of enormous activity with regular expansion of the campus, as well as the introduction of doctoral level programs. In 1975, with the addition of the New Jersey School of Architecture, the institution had evolved into a technological university, emphasizing a broad range of degrees and dedication to significant research and public service. Newark College of Engineering, stronger than ever, remained intact, but a new university name -- New Jersey Institute of Technology -- reflected the institution's expanded mission.

A broadened mission called for the creation of a residential campus and the opening of NJIT's first dormitory in 1980 began a period of steady growth that continues. Two new schools were established during the 1980s--the College of Science and Liberal Arts (1982) and the School of Industrial Management (1988). The Albert Dorman Honors College was established in 1994, and the College of Computing Sciences, was created in 2001. Beginning in 2009 the College of Architecture and Design was created to house the New Jersey School of Architecture and the new school of Art and Design.



Administration

Dr. Joel Bloom

President, New Jersey Institute of Technology

Appointed President of New Jersey Institute of Technology on January 12, 2012 by unanimous



vote of NJIT's Board of Trustees, Joel S. Bloom started his career in industry working as an economist.

He subsequently became an educator and administrator for the New York City public schools. Prior to coming to New Jersey, he worked as a research director and instructor at Teachers College, Columbia University.

In New Jersey, he managed state and federally-funded curriculum development and training centers for the state. From 1983 through 1990, Dr. Bloom served as assistant commissioner in the NJ Department of Education for the Division of General Academic Education. He was responsible for managing many of the education department's initiatives including competency testing, curriculum content standards, pre-school programs, establishment of 17 model effective schools, over 300 grants and contracts, and a \$24 million budget.

Immediately prior to his appointment as President, he served as Interim President from September 2011 until January 2012.

Prior to that, he was NJIT's Vice President for Academic and Student Services, as well as founding dean of the Albert Dorman Honors College.

Indeed, since joining NJIT in July 1990, Dr. Bloom has served the university in many capacities.

Promoted in 1996 to Vice President for Academic and Student Services, he was responsible for nine divisions of the university, including pre-college programs, enrollment management, continuing professional education, career development services, dean of student services, freshman studies, educational opportunity programs, library services, physical education and athletics.

Dr. Bloom was appointed as the first dean of the Albert Dorman Honors College in 1998, in addition to his vice president responsibilities. The Honors College enrolls over 650 students who come from 15 states and several foreign countries. The average SAT score is over 1340 and the majority of the incoming freshman class members graduated in the top 15 percent of their high school class. More than 50 percent of the Honors College students maintain a grade-point average higher than 3.5.

Dr. Bloom is chair of the Science Park Board, treasurer of the NJ President's Council, and treasurer of the NJEDge.Net Board. In addition, he serves as a member of the following boards: the Board for Communities and Schools, Newark Alliance, Philadelphia Alliance for Minority Participation, La Casa de Don Pedro, and the Association of Public and Land-grant Universities Presidents Council. Dr. Bloom has been the recipient of national and state education awards, as well as federal, foundation and corporate grant awards. He has published journal articles and presented papers on school improvement, curriculum development, college transition and student assessment.

Dr. Bloom holds a master's degree and a doctorate from Teachers College, Columbia University. He also earned master's and bachelor's degrees from Hunter College of the City University, New York City.

Charles J. Fey

Vice President for Academic and Student Services



Dr. Fey joined NJIT in September 2012 with 39 years of leadership experience in student services as Vice President of Academic Support and Student Affairs.

At NJIT, he continues his commitment to creating a campus climate that promotes student achievement and student success. His personal philosophy of student engagement extends to the development of innovative programs that inspire challenging and engaging student experiences and encourage each student to reach for his/her dream and work until it is achieved.

Dr. Fey's strong record of accomplishments demonstrates his deep understanding of emerging issues and trends that affect metropolitan campuses and the students who attend them. In addition to his direct involvement with students, Fey oversees numerous offices and departments at NJIT, including including Intercollegiate Athletics, Recreation and Intramurals, Physical Education.

Fey actively participates in student affairs business on a national level and holds or has held board positions in ACPA, NASPA, and APLU. He was the founding president of the Massachusetts College Personnel Association and was president of the Texas Association of College and University Personnel Association. Fey has received numerous awards including the Esther Lloyd Jones Professional Service Award from ACPA; is a Diamond Honoree of ACPA's Foundation; twice received the Outstanding Service award from the Commission on Administrative Leadership of ACPA; and an exemplary service award from MCPA.

Fey earned his bachelor's degree in liberal arts and his masters of education degree in counselor education, college student personnel services, both from The Pennsylvania State University. He holds a doctorate in higher education administration from Texas A&M University.

Prior to NJIT, he was the Vice President for Student Affairs at The University of Akron; was Vice President for Student Affairs at University of Maryland, Baltimore County (UMBC); Dean of Students at the University of Texas at El Paso; served as Vice President and Dean of Student Life at Our Lady of the Lake University in San Antonio; Dean of Students at St. Mary's University, also in San Antonio; Associate Dean of Student Affairs at Keene (NH) State College; Director of Housing/Resident Life at Catholic University of America; and in numerous student affairs and other administrative posts at Newbury Junior College in Boston.

Married to Melba Ann Fey since 1985, Charlie and Melba have two daughters, Kelly Prestel, living in Boston, and Chelsea Fey, living in Arlington, VA and two sons, Lloyd Lopez and Matt Lopez, who live in San Antonio.

Administration

Lenny Kaplan

Director of Athletics



Since taking over as head of NJIT's division of physical education and athletics in August 2000, Lenny Kaplan has been instrumental in guiding NJIT's reclassification to NCAA Division I.

First, Kaplan helped stabilize and expand a program that was entering its fourth year in Division II when he arrived in Newark. In late 2002, after discussions with then-President Dr. Robert A. Altenkirch and then-Vice President Dr. Joel Bloom, Kaplan took on the task of steering NJIT's programs into Division I, a process that reached fruition with the NCAA's granting active Division I status, with full championship eligibility effective September 1, 2009.

Throughout Kaplan's tenure, NJIT has enhanced the athletics program, particularly in areas that benefit the student-athletes directly. A hallmark in achieving that aim was the Highlanders Athletics Campaign, which announced in the summer of 2009 that it had raised \$5.4 million against a goal of \$5 million. Of the \$5 million in the goal, \$3 million was for facilities, \$1.5 million for athletics scholarships, and \$500,000 for program support.

The sports offerings have expanded to its current 19 varsity programs, with the newest, men's lacrosse set to debut in 2015. Since 2004, NJIT has renovated its two main on-campus venues—Lubetkin Field at Mal Simon Stadium and the Estelle and Zoom Fleisher Athletic Center. Further, the newest facility, the Naimoli Family Athletic and Recreational Facility, a 25,600-square foot building opened in March 2011 as a heated and air conditioned space that includes indoor tennis courts used for intercollegiate competition.

On Kaplan's watch, the school signed a 10-year partnership to play all home baseball in the professional Bears and Eagles Riverfront Stadium and later agreed to host basketball in the Prudential Center, the downtown Newark home of the NHL's New Jersey Devils.

Under Kaplan's leadership, many teams achieved regional and national Division II ranking. Success for several women's teams was unprecedented, with basketball, tennis and soccer all reaching postseason play for the first time under his administration.

Additionally, men's volleyball captured a 2007 divisional championship in the Eastern Intercollegiate Volleyball Association and the next year reached the EIVA playoff semifinals hosted by eventual 2008 national champion Penn State.

In 2009-10, NJIT's first full year as an active member of NCAA Division I, the women's volleyball team and senior Sabrina Baby became the school's first national statistical champions at the Division I level, as team and individual leaders, respectively in digs per set. Baby was honored as NJIT's first CoSIDA Academic All-America in the Division I era, earning third-team national honors.

Christian Baumbach made history in 2009 when he was NJIT's first Division I individual sport conference champion, taking first place in the Great West Conference cross country race and in the prestigious IC4A University Division race, a competition held for the 101st time in 2009.

Kaplan guided the Highlanders into the all-sports Great West Conference and the women's tennis team won back-to-back GWC titles in 2011 and 2012. In 2012-13, both NJIT basketball teams captured GWC crowns, with the men winning their regular season title and the women's winning the GWC postseason tournament.

Two Highlanders men's basketball standouts—Isaiah Wilkerson (Class of 2012) and Chris Flores (Class of 2013)—received honorable mention on the Associated Press All-America team, the first such national honorees for NJIT at the Division I level.

Wilkerson continued his career as a professional in the NBA D-League and Flores and women's basketball star Rayven Johnson (Class of 2013) went overseas to professional careers in Germany.

In 2012-13, baseball pitcher Mark Leiter, Jr., was selected by the Philadelphia Phillies organization in the Major League Baseball First-Year Player draft and fellow pitcher Tripp Davis signed as a free agent with the Kansas City Royals organization.

In 2013-14, Marko Drljic became the first NJIT men's soccer player to be selected to the All-Region season honors from the NSCAA at the highest level, earning NSCAA/Continental Tire Division I Men's All-North Atlantic Region honors, while men's tennis player Markus Schultz advanced to the round of 16 at the 2013 USTA/ITA National Regional Championships, the furthest any NJIT tennis player has advanced at the ITA tournament.

Two members of the NJIT men's basketball team, Terrence Smith and Damon Lynn finished the 2013-14 season ranked in the top 4 in the nation—Smith third in individual field-goal percentage and Lynn fourth in 3-point field goals made.

NJIT men's fencer David Kong whose weapon is the foil, earned a 16-place finish at the US National Championships and ranks 24th in the nation and 14th under 20. He placed 18th in the men's foil competition at the 2014 NCAA Fencing Championships, becoming the first NJIT fencer in 10 years to advance to the championships.

John Porteous became the first NJIT track and field athlete to qualify to the 2014 NCAA Track and Field Regional, earning a spot in the men's 400-meter hurdles.

Two NJIT sports, women's tennis and men's soccer, were invited to join automatic qualifying Division I conferences in their respective sports. Women's tennis is in the America East Conference, reaching the AEC final in 2014 and men's soccer is one of programs in the Sun Belt Conference, which is sponsoring the sport in 2014 for the first time since 1995.

Before coming to NJIT, Lenny Kaplan served 11 years at Manhattan College, where he began as Manhattan's director of operations and was assistant athletics director from 1991-2000.

Kaplan, a 1988 graduate of St. John's University with a degree in athletics administration, resides in Merrick, NY, with his wife, Nancy, and their sons, Michael and Joshua.

Athletics Senior Staff



Alexis Schug
Assoc. Director of Athletics/SWA
(973) 596-8452 schug@njit.edu



Tim Camp
Asst. Director of Athletics/Sports Information
(973) 596-8461 timothy.camp@njit.edu



Jayson Smikle
Assistant Athletic Director for Compliance
(973) 596-5278 jsmikle@njit.edu

Administration

Sports Medicine

NJIT sports medicine is moving forward with the growth of the Highlanders program. Head trainer Matt Koscs, MS/ATC, oversees the program, ably assisted by assistant trainers Paul Grayner, MED/ATC; Melissa Maskery, MS, ATC; Brittany Vondran, MS/ATC; and, Kyle Tuohy, BS/ATC.



Matt Koscs, ATC, Head Athletic Trainer

Matt Koscs, who earned both his bachelor's and master's degrees from University of Delaware, has served NJIT as head trainer since July 2009, a year after he joined the staff as an assistant trainer.

As an undergraduate at Delaware, he was recipient of the Paris Delligatti Memorial Award for Excellence in Athletic Training. He earned his MS in Exercise Science from Delaware in 2008.

Prior to his arrival at NJIT, Matt served three years as the head athletic trainer at Hodgson Vocational Technical High School in Newark, DE, from 2005 to 2008.

In addition to his work at the high school level, he was head athletic trainer for the Delaware Dynasty semi-pro soccer team in Wilmington, as well as with the Kirkwood Soccer Club in New Castle in 2005 and 2006.

He was employed from 2005 to 2008 at Christiana Care Physical Therapy Plus, in Newark, DE, where he was an athletic trainer and was the Director of Athletic Training Services in a clinical setting.

He is a NATABOC certified athletic trainer, as well as holding additional certifications as a professional rescuer and in first aid.

He resides in Metuchen, NJ with his wife Kristin and daughters Eloise, Claire and Madeleine.



Paul Grayner, ATC, Assistant Athletic Trainer

Paul Grayner, who joined the NJIT staff as an assistant athletic trainer late in the 2008 calendar year, has a diverse background in athletic training, having served at the college and professional levels, as well as in a fitness center setting.

A graduate of Saint Leo College in Florida and holder of a master's degree from American University in Washington, DC, Grayner has served as both a head and assistant trainer in the past.

From the mid-1970s to the mid-1980s, he was a trainer in the minor league systems of the New York Yankees and New York Mets from 1977 to 1985 and in 1984 he was assistant trainer with the Mets. He later worked with the Long Island Knights professional basketball team.

At the collegiate level, he was head trainer at Division I Fairleigh Dickinson University in Teaneck, NJ from 1989 to 1998 and he earlier worked as an assistant trainer at Hofstra (1982-85) and Adelphi (1985) on Long Island before joining FDU as an assistant (1986-89).

In addition to his work in athletic training, Grayner is a financial services representative and a life insurance sales representative.

He resides in Dumont, NJ.



Brittany Vorndran, ATC, Assistant Athletic Trainer

Brittany Vorndran, who joined the NJIT staff as an assistant athletic trainer in the summer of 2012, earned her bachelor's degree, majoring in athletic training, from Bridgewater (MA) State University in 2010 and was the school's 2008-09

Athletic Training Student of the Year.

She earned her master's in Kinesiology at James Madison University in Harrisonburg, VA, in May 2012.

At James Madison, she worked with the cross country, track and field, tennis and cheerleading teams.

A resident of Millville, NJ, she has worked as a substitute teacher for the Millville Board of Education.



**Melissa Maskery, ATC,
Assistant Athletic Trainer**

Melissa Maskery, who joined the NJIT staff as an assistant athletic trainer in the summer of 2013, earned her bachelor's degree, majoring in athletic training and minoring in strength and conditioning, from the

University of Delaware in 2011.

She earned her master's in athletic training at Temple University in May 2013.

As a graduate assistant, she worked in Philadelphia with several Division I teams at Drexel University and as an undergraduate, on the medical staff for Delaware's 2010 Division I Football Championship Series (formerly known as Division I-AA) national runner-up.

She has worked as a trainer at numerous summer camps and before coming to NJIT, she earned the 2013 Merit Award for Research in the College of Health Sciences & Social Work and was the recipient of Drexel University Dragon Award for Leadership.

She is married to Mark Mackey.



**Kyle Tuohy, ATC, Assistant
Athletic Trainer**

Kyle Tuohy, a 2014 summa cum laude graduate of East Stroudsburg (PA) University, joined the NJIT athletic training staff in September 2014.

Tuohy, who will attend graduate school while working

at NJIT, won multiple awards from his alma mater, including the David Carylton Athletic Training Outstanding Student Award in May 2014.

He had varied clinical internship experience starting in the Fall Semester 2012 and continuing through his senior year.

His internships included stints with the East Stroudsburg women's basketball team; Parkland High School and Pen Argyl High School, both in Pennsylvania; the Tennessee Smokies professional baseball team, Class AA minor league affiliate of the Chicago Cubs; and Lafayette College in Easton, PA, where he worked closely with the Leopards football team in season and also worked with athletes from all in-season sports in the Fall Semester.

He holds several profession-related certifications, including from the National Athletic Trainers Association.



**Louis Rizio, MD, Team
Physician**

Dr. Rizio is a board certified orthopedic surgeon and is fellowship trained in the field of sports medicine. He is a graduate of Rutgers and after earning his medical degree from the UMDNJ/New Jersey Medical School (recently

reorganized and renamed Rutgers Biomedical and Health Sciences), Dr. Rizio completed his orthopaedic residency at Tufts University in Boston.

Administration

He then completed a sports medicine fellowship at the University of Miami. During his fellowship, he was assistant team physician of the Miami Dolphins, University of Miami Hurricanes, and the Florida Marlins.

Dr. Rizio, who specializes in sports-related injuries, practices at the Sports Medicine and Orthopaedic Center in Livingston, NJ. Prior to starting his own practice, Dr Rizio was the Chief of Sports Medicine at the NJ Medical School from 2000-2005. He currently is a professional, college, and high school team physician.

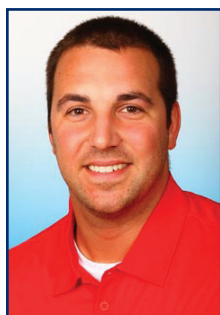
In 2013, Dr. Rizio was honored by the magazine New Jersey Monthly on its "Jersey Choice Top Doctors" list.

Strength and Conditioning

There are many ways to make a team better and a vital path to improvement comes with the mantra "bigger, stronger, faster."

It's how teams get better from within by maximizing individual and team performance in competition. The Strength and Conditioning staff also works closely with the Athletic Training Staff in the areas of injury prevention and rehabilitation.

In the summer and fall of 2014, NJIT's Strength and Conditioning took new direction with the appointment of Bobby Fisk as Head Strength and Conditioning Coach and Drew Culp as Fisk's Assistant Coach.



Bobby Fisk, Head Strength & Conditioning Coach

Bobby Fisk, who was a basketball player in his own college days and coached the sport after college, comes to NJIT from Xavier University in Cincinnati, where he was assistant coach of strength and conditioning for

the entire Musketeers' program, which competes in the Big East Conference.

Fisk, a native of Schenectady, NY, spent over two years at Hobart and William Smith Colleges in Geneva, NY, where, as head strength and conditioning coach, he worked with successful teams, including women's soccer (William Smith College), which won the 2013 NCAA Division III National Championship; football (Hobart), which advanced to the 2012 Division III national quarterfinals and the regional finals in 2011 and 2013; and basketball, where Hobart reached the second round of the 2012 NCAA Tournament.

Moving to the Division I level with Xavier in 2013-14, Fisk worked with all 16 of the school's teams, with a primary assignment to women's basketball, men's and women's soccer, baseball, and men's and women's tennis.

He is a graduate of the State University of New York College at Oneonta (BS, Business Economics, 2008), Averett University of Danville, VA (MBA, 2010), and California University of Pennsylvania (MS in Exercise Science, Performance Enhancement & Injury Prevention, 2013)

As a student-athlete, Fisk was a men's basketball player at NCAA Division I UMBC in Baltimore for three years before transferring to Oneonta, where he was on the team for two years, serving as captain as a senior and earning All-State University of New York Athletic Conference honorable mention.

As a senior for Oneonta's Red Dragons, he finished 16th in the nation in Division III in 3-point shooting percentage (.441) and 22nd in 3-pointers made per game (3.2) as a senior at Oneonta.

After graduation from Oneonta, he entered coaching while pursuing his master's degree at Averett, serving that program as assistant men's basketball coach (two years) and head strength and conditioning coach (one year).

Having received his master's degree from

Averett in December 2010, he returned home to the Schenectady area and worked April 2011 to July 2011 as assistant strength and conditioning coach at nearby Siena College and with the minor professional basketball Albany Legends (head strength and conditioning coach).

Fisk holds multiple certifications and professional memberships.



Drew Culp, Assistant Strength & Conditioning

NJIT's head strength and conditioning coach Bobby Fisk named Drew Culp to be his assistant coach in September 2014.

Culp, who earned his bachelor's degree from Penn State University in 2010 and his master's degree from

Penn State in 2012, most recently served as a volunteer assistant strength and conditioning coach at nearby Seton Hall prior to accepting his position with NJIT.

At Seton Hall, Culp worked with the school's Big East Conference men's and women's basketball teams, as well as with the men's soccer team.

Between college and coming to New Jersey, Culp worked at Velocity Sports Performance in Irvine, CA. He was a Sports Performance Coach and Assistant Sports Performance Director. Specifically, he was the Head Strength and Conditioning Coach for the El Toro High School football team and also assisted in training National Football League combine athletes. He also offered private training to athletes in a range of sports and age levels.

Drew Culp was a graduate assistant strength and conditioning coach at Penn State, working with the Nittany Lions football team for over a year through preseason 2012 and working with 11 Olympic Sports teams in his final semester.

He holds multiple certifications, including both strength and conditioning and first aid and CPR.

Academic Enrichment



Sandra Taylor, Director of The Learning Center

Sandra Taylor was appointed as Director of The Learning Center in late September 2014 after serving as Interim Director for the previous 16 months.

She joined NJIT in January 2010 as Academic Advisor for Student-

Athletes working in NJIT's Center for Academic and Personal Enrichment (CAPE), which has since been renamed as The Learning Center.

She mentored student-athletes in the areas of academic support, personal development, leadership, and community service. She was instrumental in bringing the Chi Alpha Sigma Honor Society for student-athletes to campus and has been individually certified from the N4A (National Association of Academic Advisors for Athletics) as an academic advisor for student-athletes.

In May 2013, she was elevated to Interim Director of CAPE and presided over its transition to the Learning Center in August of 2014. The Learning Center provides academic support to all students, mentoring and workshops, tutoring in areas outside of math and writing, and testing accommodations for students with disabilities. She has served on NJIT's Strategic Planning, Academic Advising, Retention and Persistence, Customer Service, Student Satisfaction, and Athletic Oversight Committees.

Prior to joining NJIT, Taylor spent 17 years as a key member of the Manhattan College Department of Athletics. She earned both her bachelor's degree in secondary education and her master's degree in special education from Manhattan College and is working on her doctorate in educational leadership at St. Mary's University in Winona, MN.

Working in the athletics department at Manhattan, a founding member of the Metro Atlantic Athletic Conference, Taylor was Associate Director of Athletics and Senior Woman Administrator, having filled those posts from 1996 until joining NJIT in 2010,

Administration

For much of her time on the Manhattan staff (1995 to 2003), she was Chief Athletic Department Compliance Officer, with responsibility for Manhattan's adherence to NCAA Division I, MAAC and college regulations. She began her service at Manhattan as Athletic Department Ticket Manager, serving in that capacity from 1993 to 2003.

In her time at Manhattan, she served on numerous NCAA, conference and internal college committees, including service on the NCAA Division I Management Council from 2004 to 2007 and as chair of the NCAA Women's Lacrosse Committee from 2002 to 2006.

At the conference level, she chaired the MAAC Women's Basketball Committee from 1997 to 2009 and also served on four other sport committees, as well as on the MAAC Committee on Athletic Administration, with service as vice-chair in 2008-09.

Internally at Manhattan, her assignments included service on the Middle States Review in 2000 and on the NCAA Certification Committee.

Sandra and her husband, Ken, who is Associate Commissioner for Men's Basketball and Baseball at the MAAC, reside in Monroe Township, NJ, with their daughters, Katherine, who was born in May 2004, and Samantha, who was born in July 2009.



Mike Spisto, Eligibility Certification Officer/Academic Advisor for Athletics

Mike Spisto moved to administration as NJIT's Eligibility Certification Office/ Academic Adviser for Athletics in the Spring of 2013, working in the Center for Academic and Personal Enrichment (CAPE), now named

The Learning Center.

For the previous five years, he was the top assistant coach on the men's basketball staff, working with head coach Jim Engles in an association that culminated with the Highlanders capturing the 2013

regular season championship of the Great West Conference.

In addition to 14 years college coaching—five at NJIT—he served as Director of Athletics at the State University of New York at Delhi in the two years before he joined Engles' coaching staff with the Highlanders.

He had two stints as head coach at SUNY at Delhi sandwiched around three years as a Division I assistant with Rider and Albany (NY). He began his coaching career with two years as an assistant at his alma mater, Division III SUNY Oneonta.

At Delhi, which is also an alma mater, he was head coach from 1999 to 2001, left to become a Division I assistant and then returned for another two-year stint as head coach from 2004 to 2006 before becoming AD at Delhi.

His head coaching record in four years at SUNY Delhi was 86-31 and both stints included championships and coaching awards. His first Division I coaching assignment came at Rider University in 2001-02, where he worked alongside Jim Engles as an assistant when Rider captured its first-ever Metro Atlantic Athletic Conference regular season championship.

Heading to the University at Albany (NY), he helped recruit the team that would win back-to-back America East Conference championships.

Spisto's coaching career began at Oneonta State following his 1997 graduation. In addition to his bachelor's degree from Oneonta, he earned an associate's degree from SUNY Delhi, as well as an MSS from United States Sports Academy.

He played at both Delhi and Oneonta and was all-region twice at Delhi, where he is the career assists leader. At Oneonta he was captain as a senior after winning an ECAC title his junior year.

Mike and his wife, Katie-Lynn, reside in Staten Island, NY, with their young children: sons Michael (9) and Christopher (6), and daughter Alyssa (2).

Remembering Joe Caiola



On June 29, 2014, NJIT athletics lost one of its top administrators, Assistant Director of Athletics Joe Caiola, who passed away unexpectedly at the age of 57 in Fort Myers, Florida.

As hard-working and vital a contributor as he was the department's day-to-day operation, more important to the many that knew him was the way Joe touched so many lives with his warm personality and kind spirit.

Born in Newark on February 16, 1957, Joe Caiola earned two degrees from NJIT, a Bachelor of Science, cum laude, with a major in engineering technology in 1980, and a Master of Science in Management in 1984. He previously earned an Associate in Applied Science in 1978 from Brookdale Community College (Lincroft, NJ) in 1978.

While he was an undergraduate at NJIT, Caiola was a two-year member of the men's basketball team. In his final college game on February 29, 1980, Joe exploded for a career-high 40 points against Concordia of New York. In addition to being Joe's personal career-best, that 40-point total is sixth on the all-time list for the Highlanders, who have fielded intercollegiate basketball teams since 1922.

Upon graduation from NJIT, Caiola embarked on a career in marketing and management in technical staff augmentation and contract engineering services. He held that position full-time for over a decade and later began working as a developer of single-family homes.

However, sports remained a passion for Joe and, along with his full-time work, he became a part-time coach in boys basketball in the mid-1990s.

Not long after, he returned to NJIT as an assistant men's basketball coach in 1997 and soon added responsibilities as an Assistant Director of Athletics. Having spent 17 years on the staff at NJIT, he was the longest-tenured employee of the department among administrators and coaches. At the time of his passing, Joe held the title of Assistant Athletics Director for Business, Facilities, and Events Management.

In addition to his work for NJIT, he was active in youth basketball and baseball in Edison, NJ, his hometown for the last 29 years of his life.

An avid bike rider who, on more than one occasion, rode from Edison to Newark and back, a round-trip of nearly 50 miles, Joe also continued to play recreational basketball in his 50s and played every year in the annual NJIT Alumni basketball games, which he helped organize. He played

throughout the most recent alumni game, held in February 2014.

Joe Caiola was a special person, universally well-liked among his NJIT co-workers and his friendliness and his kind spirit were evident almost immediately when he met new people.

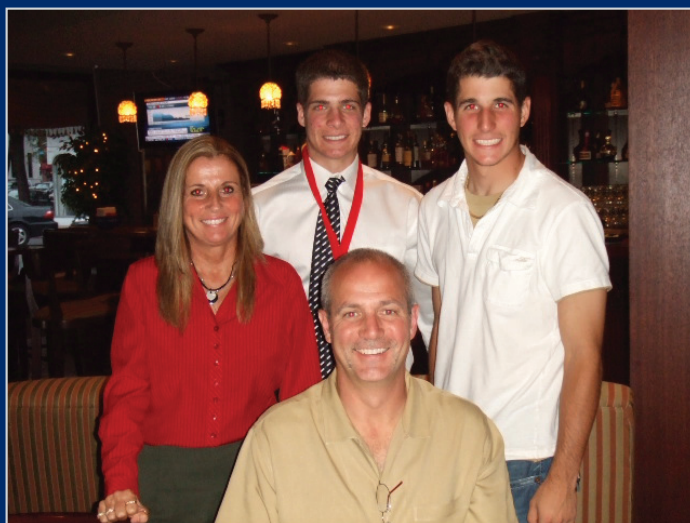
He enthusiastically took on new tasks on the job, no matter how difficult, and he was always the first to help others. Many a co-worker could tell personal stories of how Joe helped them in a time of need.

He worked especially closely with the Highlander baseball program and often traveled to the team's away games. He was the administrator-in-charge at several away Great West Conference baseball tournaments across the country and when NJIT hosted the 2013 Great West Conference Tournament, the last one for the GWC, he was Tournament Director, a post he also held when NJIT hosted previous baseball and soccer championship tournaments. Joe also accompanied other Highlander teams when they traveled to far away tournaments.

He is survived by his wife Carol and their two sons, Joe and Anthony. Both sons followed in their father's path, attending and graduating from NJIT. Joe, the elder of the Caiola brothers earned both bachelor's and master's degrees, while Anthony earned a bachelor's degree and played as member of the Highlanders baseball team for four years, completing his playing career in 2012.

His sons and their accomplishment were a special source of pride and joy for Joe. If you knew Joe well enough to speak to him regularly, you would hear news about all that his boys were doing as their lives progressed from high school all the way through college and entering the job market.

Joe is also survived by his parents, Nicholas and Filomena, and by his brother, Nicholas, Jr., in addition to numerous in-laws, nieces, nephews and cousins.



Athletic Administration & Coaching Staff

SENIOR ADMINISTRATION

Lenny Kaplan TBA	Director of Athletics Senior Associate Athletic Director
Alexis Schug	Associate Athletic Director/ Senior Women Administrator
Jayson Smikle	Assistant Athletic Director for Compliance
Tim Camp	Assistant Athletic Director for Sports Information
Mike Siegel	Faculty Athletic Representative Senior Women Administrator
Brian Callahan	Assistant Director of Physical Education

ACADEMIC SUPPORT

Sandra Taylor	Director of The Learning Center; Academic Advisor Athletics
Mike Spisto	Eligibility Certification Officer/Academic Advisor for Athletics

ATHLETIC TRAINING

Matt Koscs	Head Athletic Trainer
Paul Grayner	Assistant Athletic Trainer
Brittany Vorndran	Assistant Athletic Trainer
Melissa Mackey	Assistant Athletic Trainer
Kyle Tuohy	Assistant Athletic Trainer
Dr. Louis Rizio	Team Physician

COMPLIANCE

Alexis Schug	Associate Athletic Director/ Senior Women Administrator
Jayson Smikle	Assistant Athletic Director for Compliance
Raquel Green	Compliance Coordinator

DEVELOPMENT

Darlene Lamourt	Development Officer for Athletics
-----------------	-----------------------------------

FLEISHER ATHLETIC CENTER

Shannon Abraham	Operations Manager
Jonathan Walker	Front Desk
Danielle Dundas	Receptionist

SPORTS INFORMATION

Tim Camp	Assistant Athletic Director for Sports Information
Stephanie Pillari	Assistant Sports Information Director
Courtney Caden	Assistant Sports Information Director

STRENGTH AND CONDITIONING

Bobby Fisk	Head Strength and Conditioning Coach
Drew Culp	Assistant Strength and Conditioning Coach

COACHING STAFF DIRECTORY

BASEBALL

Brian Guiliana	Head Coach
Robbie McClellan	Assistant Coach
Grant Neary	Assistant Coach

MEN'S BASKETBALL

Jim Engles	Head Coach
Brian Kennedy	Assistant Coach
Jesse Agel	Assistant Coach
Dino Presley	Assistant Coach
Jared Czech	Director of Basketball Operations

WOMEN'S BASKETBALL

Steve Lanpher	Head Coach
Mark McCaleb	Assistant Coach
LaKea Jones	Assistant Coach
Epiphany Smith	Assistant Coach

MEN'S & WOMEN'S CROSS COUNTRY

Al Alonso	Head Coach
John Crawford	Assistant Coach

MEN'S AND WOMEN'S FENCING

Yefim Litvan	Head Coach
Jason Henderson	Assistant Coach
Henry Kennard	Assistant Coach
Danielle Henderson	Assistant Coach

MEN'S SOCCER

Didier Orellana	Head Coach
David Janezic	Assistant Coach
Evan Brandsdorfer	Assistant Coach
Chris Condron	Volunteer Assistant

WOMEN'S SOCCER

Mandi Ridsen	Head Coach
Scott Waddell	Assistant Coach
Tim Verschuren	Volunteer Coach

MEN'S SWIMMING & DIVING

Michael Lawson	Head Coach
Mark Albright	Assistant Coach
Shawn Bryan	Assistant Coach
Anthony Cacella	Volunteer Diving Coach

MEN'S AND WOMEN'S TENNIS

Ira Miller	Head Coach
Livia Gherman	Assistant Coach

MEN'S AND WOMEN'S TRACK AND FIELD (INDOOR & OUTDOOR)

Al Alonso	Head Coach
John Crawford	Assistant Coach
Robert Willmott	Volunteer Coach

MEN'S VOLLEYBALL

Danny Goncalves	Head Coach
Brennon Dyer	Assistant Coach

WOMEN'S VOLLEYBALL

Pete Volkert	Head Coach
Ariel Scott	Assistant Coach
Anthony Valbrun	Assistant Coach
Alicja Pawelec	Volunteer Coach

NJIT & NCAA Division I

Beginning on September 1, 2009, the entire NJIT athletics program officially gained across-the-board active membership in NCAA Division I, completing a process that began officially in 2003.

NJIT, its teams and student-athletes enjoy the full benefits of Division I membership, including eligibility for Division I postseason championship competition and the inclusion of the Highlanders among the national Division I leaders in statistics maintained by the NCAA.

Within months of NJIT's active Division I membership, the school won its first national Division I statistical championships, as women's volleyball players Sabrina Baby led the nation in digs per set and her teammates captured the team crown for digs, as well.

The NCAA's decision to make NJIT a full member of Division I completed a specific timetable that required NJIT and its Department of Athletics to meet a series of annual benchmarks before proceeding to the next step in the process.

NJIT, which competed in NCAA Division II beginning in 1997-98 and in NCAA Division III for more than two decades before that, made its first formal move toward Division I reclassification with men's soccer paving



Martina Matejckova

the way in 2003. That move grew out of November 2002 meetings among then-President Robert A. Altenkirch, then Vice President Joel Bloom (who would later succeed Altenkirch as NJIT's President) and Director of Athletics Lenny Kaplan. From there came a proposal for Dr. Altenkirch to the Board of Trustees, which unanimously approved in February 2003 a plan to reclassify men's soccer to Division I. Little more than two years later, the NCAA approved NJIT's proposal to begin advancing its entire program to Division I.

Men's soccer achieved active Division I status in 2005 and NJIT women's soccer became postseason-eligible in 2007. The

NJIT & NCAA Division I



Camerin Spahn

remaining programs also began reclassifying in 2005, with active status taking longer for an entire athletics program than under the single-sport- per-gender track used for the two soccer programs.

In 2005-06 the lion's share of the competition for all but the men's soccer program came at the Division II level. In 2006-07, 2007-08, and 2008-09, NJIT's teams competed at the Division I level and fully complied with NCAA Division I rules, but were not eligible for championships at the top level.

Every facet of the program has been enhanced in the move to Division I with a

special emphasis placed on student-athlete welfare. Facility upgrades have gone along with sports medicine staff expansion, a strength and conditioning program, and academic enrichment. NJIT has built a model NCAA Division I rules compliance regimen within its athletics program and across the entire university.

Further, the Board of Trustees embraced the transition to Division I as part of the University's strategic plan to enhance the quality of campus life for all students as NJIT makes the transition to being a residential university.

NJIT's teams have competed throughout the United States, taking on opponents from schools that are instantly recognizable for their stature in academics and athletics.

NJIT student-athletes have faced opponents every Ivy League institution, as well as the Patriot League, including Army and Navy, Buckell, Lafayette, and Lehigh.

The Highlanders have also competed against teams from every Division I conference with teams either in the Northeast or Mid-Atlantic States, including the America East, American Athletic, Atlantic 10, Big East, Colonial Athletic Association, Metro Atlantic Athletic, Mid-Eastern Athletic, and Northeast.

The eighth New Jersey-based institution in Division I, NJIT has competed against all seven of its home state peers, including Rutgers and Seton Hall.

In addition, Highlander teams have taken on squads from power conferences such as the ACC, Big Ten, Big 12, and Pac-12.

Two high-profile opponents, Maryland in men's soccer in 2005 and Penn State in men's volleyball in 2008, won national championships following the same regular seasons in which they faced NJIT.



Alana Dudley

NJIT joined its first Division I conference in 2009-10 when the Great West became an all-sports conference and women's tennis captured back-to-back league titles in 2011 and 2012. In 2012-13, the final year of the GWC, NJIT men's basketball was regular season champion and NJIT women's basketball was GWC Tournament champion.

Moving on from the Great West, NJIT women's tennis joined the America East Conference in 2013-14 and finished as conference runner-up in 2014, the Highlanders' first try at the AEC title. NJIT men's soccer began play as a member of the Sun Belt Conference in 2014, with the Sun Belt champion earning an automatic qualifying berth in the Division I College Cup field.

Also in 2013-14, NJIT men's swimming and diving became one of three new members in the Coastal Collegiate Swimming Association (CCSA), a 15-member Division I association.

Athletics Facilities

The New Jersey Institute of Technology teams play home games and practice in a combination of facilities on campus and off.

The on-campus facilities include Lubetkin Field at Mal Simon Stadium for outdoor sports and the Estelle and Zoom Fleisher Athletic Center for indoor sports. In addition, NJIT in 2011 opened is the Naimoli Family Athletic and Recreational Facility, a multi-purpose indoor facility on the site of the former outdoor tennis courts.

Off-campus venues include Bears and Eagles Riverfront Stadium, a professional minor league stadium that is the home of NJIT baseball; the Prudential Center, home of the NHL Devils and NBA Nets, which has hosted selected NJIT basketball games; and, Branch Brook Park in Newark and Van Cortlandt Park in the Bronx, home sites for NJIT cross country. All except for Van Cortlandt Park are less than two miles from the NJIT campus.

Lubetkin Field at Mal Simon Stadium

The men's and women's soccer teams play their home games and practice on campus at Lubetkin Field at Mal Simon Stadium, a first-class venue for college soccer.

The field on the west end of NJIT's University Heights campus is an all-weather facility, with 24/7 availability for competition or practice. Outfitted with SprinTurf artificial grass in the summer of 2004, Lubetkin Field at Mal Simon Stadium also includes lighting for night contests, bleacher seating for more than 1,200 spectators, a press box and scoreboard.

The fully-enclosed facility, with its entrance a few feet opposite the entrance of the indoor Estelle and Zoom Fleisher Athletic Center, can take its place alongside any college soccer facility in the Northeast.

The home of Highlanders soccer served as the host site for the first-ever Great West Conference women's soccer championship tournament in November 2009. Previously, NJIT hosted the three-day 2005 ECAC Division II women's soccer championship tournament.

In the fall of 2005, when the Northeast was hit with record rainfall, games went on without a hitch at Lubetkin Field, thanks to the quality of the surface. Indeed, with the rain disrupting schedules around the region, some crucial Big East contests involving Seton Hall were moved to NJIT's home field. Those games, too, went off without a hitch.



Lubetkin Field at Mal Simon Stadium

Estelle and Zoom Fleisher Athletic Center

The NJIT men's and women's basketball teams and men's and women's volleyball teams play their home games in the Fleisher Athletic Center gymnasium, while the swimming and diving team competes and practices in building's pool. The Fleisher Center also houses intercollegiate fencing, as well as all athletic department offices, varsity and general weight and fitness rooms, and the athletic training room.

In the summer of 2006, the gym underwent renovation to include installation of a new floor and baskets, new lighting, new sound system and new scoreboards, along with entirely new seating for approximately 1,500 spectators after the first phase of renovation. The back bay 'C gym' can be sectioned off from the main competition floor, making the facility useful for intramurals, physical education classes and campus recreation time, while being able to host multiple simultaneous events.

A six-lane swimming pool in Fleisher Athletic Center is home to the NJIT swimming and diving team. Fencing has its own area on the second floor of the building.

In addition to all athletic department offices, the Fleisher Athletic Center also houses the sports medicine staff in the Athletic Training Room and the varsity weight room, supervised by the head strength and condition coach. The building's third floor is home to a fitness center, which is open for use by all students and staff.



Athletics Facilities

The Naimoli Family Athletic & Recreation Facility

Opened in 2011, the facility is approximately 25,600 square feet. The Naimoli Family Center will be a multi-purpose space for athletics, community recreation, and gatherings involving large numbers of people.

Built on top of the old outdoor tennis courts adjoining the Fleisher Athletic Center, construction of this new building has been made possible, in part, by a generous gift from Vincent Naimoli '62, Chairman and CEO of Anchor Industries International and Chairman Emeritus/Founder of the Tampa Bay Rays major league baseball team.

The facility houses courts for tennis and is available for other athletic and recreational activities, including practice for basketball and volleyball. It is heated and air conditioned, with flooring appropriate for the intended athletics and recreational activities.

Its indoor tennis courts offer vital year round practice and playing opportunities for NJIT's intercollegiate tennis teams, which have been consistently successful in the transition to Division I. In 2011, the women's tennis team became NJIT's first conference championship team in the Division I era.

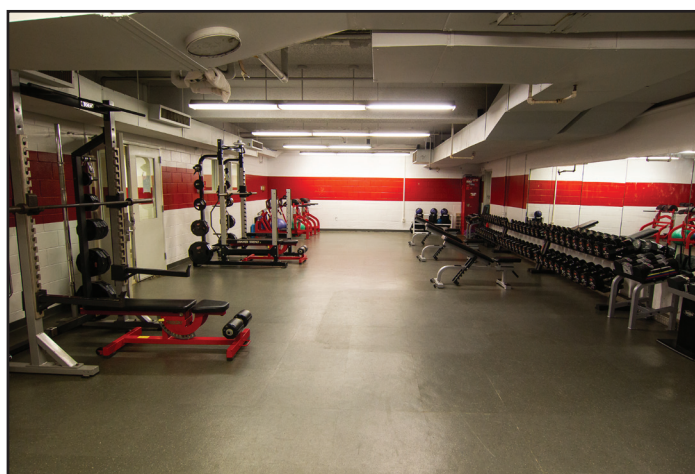


The Naimoli Family Athletic & Recreation Facility

Branch Brook Park and Van Cortlandt Park

A hallmark of the NJIT cross country program under veteran coach Al Alonso is its ability to host cross country competition that have made Highlander-sponsored races a popular destination for schools from throughout the New York/New Jersey area.

In 2009, NJIT hosted the Great West Conference championships at Van Cortlandt Park in the Bronx, and the course, which is home to some of the most prestigious events in the sport, is also the home venue for other annual NJIT-hosted races. Branch Brook Park, which is a public park of Essex County, reaches into several towns, including Newark, with the park entrance less than a mile from the NJIT campus.



NJIT Athletics Weight Room at Estelle and Zoom Fleisher Athletic Center

Track Facilities

The NJIT men's and women's indoor track & field team trains at the Jersey City Armory which is home to a 6-lane indoor 200m track while the outdoor track & field team trains at the Nat Turner Park 6-lane outdoor 400m track.



Prudential Center

In October 2007, the Prudential Center ushered in a new era in sports and entertainment in Newark and the entire northern New Jersey area.

Prudential Center is the cornerstone in the revitalization and renaissance of downtown Newark. In addition to the arena, Newark will soon add scores of condominiums, restaurants, themed bars and mixed retail establishments. Prudential Center, one of the finest arenas in the country, is New Jersey's home for hockey, basketball, concerts and numerous other events.

A public/private partnership between the City of Newark and Devils Arena Entertainment made the \$375 million Prudential Center a reality that is changing the face of downtown Newark and making it a destination place for sports and live entertainment in the region.

"The Rock" is located about a mile from NJIT's University Heights campus and is known best as the home of the National Hockey League New Jersey Devils and the former home of the National Basketball Association New Jersey Nets.

The arrival of the spectacular Prudential Center nearly coincided with NJIT's arrival as an NCAA Division I institution--the first in Newark and the newest in New Jersey in more than 20 years. The Rock opened one year after NJIT began Division I competition as part of its NCAA reclassification which is now complete.

In the arena's inaugural year, NJIT played host to six basketball games on four dates, including four men's basketball games and two women's games. Included was the first women's basketball game in the building's history, when the Highlanders entertained Cornell on January 15, 2008.

The Highlanders hosted additional basketball games in subsequent years and have played there each year of the building's existence. Further, NJIT's club ice hockey team plays all of its home games

in the full-size Devils practice rink facility (AmeriHealth Pavilion), which adjoins the main arena and has an 800-seat capacity. And one of the special events held in the main arena is NJIT's annual commencement.

Athletics Facilities

Bears and Eagles Riverfront Stadium: Home of the NJIT Highlanders

Joe Torre, then the manager of the New York Yankees, visited New Jersey Institute of Technology on December 8, 2005 to herald a new partnership between NJIT's baseball team, the Highlanders, and Newark professional baseball.

Torre was on hand as the Highlanders signed a 10-year contract to play their home games at Bears & Eagles Riverfront Stadium in Newark.

"I think this partnership is nothing but aces," Torre said during a press conference at NJIT. "It's a partnership between two class organizations that will make for nothing but a lot of fun for everyone."

For the previous two years, the Highlanders played their home games at the stadium. But the team's longer-term commitment to play at the stadium came as NJIT elevated its baseball program to Division I.

"NJIT is bringing Division I baseball to this great stadium," said NJIT President Robert A. Altenkirch, "which will generate the highest level of

excitement. It's a great partnership that allows NJIT to play intercollegiate baseball in a great facility, maybe the best for college baseball in the country."

Bears and Eagles Riverfront Stadium, the \$30 million state-of-the-art home of professional baseball in Newark, officially opened to the public on July 16, 1999.

With a seating capacity of 6,200 Bears and Eagles Riverfront Stadium affords everyone in attendance an up-close view of the action. The ballpark also has 20 luxury suites, a picnic area, a party deck, a concert stage situated behind the outfield wall and a major league-caliber press box featuring two radio booths and two television booths.

The name, Bears and Eagles Riverfront Stadium, honors Newark's rich baseball history. The original Bears were a farm team for the New York Yankees up until 1949 and the Eagles were a very successful Negro League team that played in Newark until 1950.

Bears and Eagles Riverfront Stadium



About Newark



Newark: The Renaissance City

NJIT is located in the heart of New Jersey's largest city, Newark, with a population of over 300,000, making it the 65th-largest city in the United States. A major urban center, Newark is a city on the move.

Attractions in Newark include:

- The Prudential Center, a major indoor entertainment and sports venue housing New Jersey Devils hockey and major concerts and other premier events
- New Jersey Performing Arts Center
- The Newark Museum
- The Newark Public Library
- Symphony Hall
- Branch Brook Park
- Art galleries, restaurants, shopping
- The Ironbound neighborhood, renowned for its dining and vibrant nightlife
- An urban architectural laboratory



Newark: New Jersey's College Town

Some 30,000 undergraduate, graduate, and professional students attend classes in the University Heights section, which is home to NJIT, Rutgers-Newark, Rutgers Biomedical and Health Services, and Essex County College.

Adjacent to NJIT to the east, is the Newark campus of Rutgers University and the two schools enjoy an exceptionally close and productive relationship. NJIT and Rutgers students have library privileges at both campuses. NJIT students may also enrich their educational experience by enrolling in Rutgers-Newark courses and in full degree programs in disciplines not offered by NJIT, such as art, music, geology, and psychology.

Each year, the two universities co-sponsor a common season of theatrical productions, as well as 'World Week', a joint program of honors colloquia, and a variety of other cultural and social activities.

NJIT also enjoys a cooperative relationship with its neighbor to the west in the University Heights area, UMDNJ, with several joint degree programs.



New Jersey/New York Metropolitan Region

NJIT and Newark are a part of a region that is a magnet not only to the rest of the United States, but also to the world.

In Newark and neighboring northern New Jersey alone, attractions such as the Prudential Center, New Jersey Performing Arts Center, Meadowlands Sports Complex, Red Bull Arena, Liberty Science Center, and numerous others are minutes away by car and in most cases accessible by public transportation. Literally dozens of shopping malls are within a 20-minute drive of Newark, as well.

Midtown Manhattan, with all that it and the rest of New York City offer, is less than 15 miles from the NJIT campus.

NJIT students have regular access to discount tickets for Broadway shows, museums, concerts, and sporting events.

The school also sponsors weekend trips throughout the northeastern United States, with activities such as skiing, boating, swimming, hiking, and more.

The spectacular Jersey shore is less than an hour away by car and winter sports are within a couple of hours drive to the west and north.

Sports & Entertainment Around Newark

NJIT, with its campus in Newark, NJ, sits in a region that abounds with major professional sports unlike any other in the United States and perhaps in the world. There are nine teams in the major professional leagues (MLB, NFL, NBA, and NHL) located in New York City, northern New Jersey and Long Island.

Only one of nine major teams is more than 25 miles from Newark, but most, including MetLife Stadium (Giants and Jets NFL football), Madison Square Garden (NBA Knicks, NHL Rangers), are much closer.

The three closest professional sports venues (listed below) are within three miles of NJIT's campus and can be accessed in a matter of minutes at low cost by public transportation, beginning with Newark Light Rail, from campus.

Prudential Center

The home of the National Hockey League New Jersey Devils is in downtown Newark at the corner of Mulberry and Edison streets, about one mile from the NJIT's University Heights campus.

Opened in October 2007, 'The Rock' is the centerpiece of the city's Downtown Core Redevelopment Project. In addition to NHL hockey, it has hosted numerous entertainment and sporting events, including NJIT basketball.

NJIT played basketball in the Rock in the inaugural year and in each year since. Indeed, NJIT hosted the first women's basketball game ever played in the Prudential Center on January 15, 2008 (NJIT vs. Cornell).

The arena, with full-capacity seating for 18,500 spectators, features a 4,800 square-foot exterior LED screen, as well as the latest in ice-surface technology and a gourmet restaurant overlooking the ice for Devils games. The building contains 850,000 square feet of space, 9,000 tons of steel, eight million pounds of structural steel and 25,000 cubic yards of concrete.



Sports & Entertainment Around Newark



Red Bull Arena

Located in Harrison, NJ, just across the Passaic River from Newark and less than three miles from the NJIT campus, the new home of the New York Red Bulls (opened in March 2010) sets the standard for soccer venues across North America.

The state-of-the-art soccer-specific facility is a major component of a multi-billion dollar development.

Red Bull Arena has a number of key design elements which give its seating bowl a close-to-the-action feeling and the unique stadium roof design extends from its leading edge over the entire seating bowl and then curve down to the concourse.

The overall seating capacity for soccer is 25,000, including 30 luxury suites (20 lower level and 10 upper level) and 1,116 club seats. Other amenities include three stadium clubs and two retail outlets.



Bears and Eagles Riverfront Stadium

Bears and Eagles Riverfront Stadium, the \$30 million state-of-the-art home of professional baseball and, since 2004, the home of NJIT Highlanders baseball, officially opened to the public on July 16, 1999. With a seating capacity of 6,200, "The Den" affords fans an up-close view of the action. The ballpark also has 20 luxury suites, a picnic area, a party deck, a concert stage situated behind the outfield wall and a major league-caliber press box.

In December 2005, NJIT and the Bears held a joint press conference to herald a new partnership that includes a 10-year deal that extends Bears and Eagles Riverfront Stadium as the home of NJIT Highlanders baseball.

Head Coach Steve Lanpher



Named to lead the NJIT women's basketball program in July of 2012, Steve Lanpher led the team to its first conference championship when the Highlanders captured the Great West Conference Tournament title on March 16, 2013 in Chicago.

In guiding his first Highlander team in 2012-13, Lanpher got NJIT to peak at precisely the right time, as the squad won its last 5 games and 8 of the last 9. Included in the closing burst were wins in the GWC Tournament over Texas-Pan American in the semifinals and then over regular season champ Utah Valley in the title game.

A common thread in the two tournament wins—defense, as the Highlanders scored exactly 52 points in each contest, but held UTPA and UVU to 42 points apiece. With senior Rayven Johnson, the tournament MVP, scoring 20 points and pulling down an NJIT DI-record 18 rebounds, the Highlanders held Utah Valley, an explosive team, to 10-for-50 shooting from the field. GWC Player of the Year Sammie Jensen of UVU managed just 2 points on 2-for-13 shooting.

Winning with defense was a goal of Lanpher's and in his team's 16 wins just one opponent topped 64 points (Texas-Pan American scored 75 in an overtime loss to NJIT).

The GWC title was the first at any level for NJIT women's basketball, which began Division III competition in 1986-87 and experienced a measure of success, but no championships, in the latter years of its Division II era, which ended in 2005-06.

In Lanpher's second season, with the go-to player Rayven

Johnson having taken her game to pro ball in Germany, the Highlanders faced a rebuilding season and sustained eight losses by 7 points or less. Still, they won three in a row beginning February 17 before falling in the finale at Hofstra.

When he took over at NJIT, the personable Lanpher already was a veteran of nearly 20 years coaching girls and women's basketball, having most recently been the women's basketball associate head coach at the University of Massachusetts when he got the call to lead the Highlander program.

Lanpher (pronounced Lan-FEER), who has been a head coach at the high school, junior college and at the four-year college level in NCAA Division III, has seven years experience as either an assistant coach or associate head coach at the NCAA Division I level.

In 2006, he became an assistant coach at the University of Vermont, beginning a six-year association with head coach Sharon Dawley, who promoted him to associate head coach for his last two years at Vermont and hired him as associate head coach at UMass, when she was named head coach there in 2010.

Vermont's combined record in Lanpher's four years on the staff there was 91-40. In his second year with the Catamounts, they finished 24-9 and advanced to the second round of the Women's National Invitation Tournament in postseason. The next two years, they were America East Conference champions, reaching the NCAA Division I Tournament in both 2009 and 2010. The 2009 team finished 21-12 and the 2010 team was 27-7, including a win in the first round of the NCAAs.

At UMass, Lanpher assisted Coach Dawley in the first two years of work toward building a championship-quality program in the rugged Atlantic 10 Conference.

"Steve is a great guy and I'm going to miss him and his family," said Dawley, the UMass head coach of her former top assistant. "I'm thrilled that he's getting this opportunity to take over his own program. He's passionate about



basketball and developing great relationships with the student-athletes. He's passionate about them excelling in the classroom, as well as on the basketball court."

A 1987 graduate of College of St. Joseph in Rutland, VT, with a bachelor's degree and a master's degree three years later, Lanpher began his coaching career with a three-year stint as head girls basketball coach at West Rutland High School. He returned to the College of St. Joseph as women's basketball coach in 1993-94, before serving in the United States Army as a Ranger in the First Ranger Battalion in Savannah, GA.

Returning to civilian life, he was the head coach of a startup women's junior college program at Dean College in Massachusetts, where he was Region XXI Coach of the Year in 1998. From Dean, he moved to Pratt Community College in Kansas, where he led the team to 18 wins in his second year, a 10-win improvement over the first year.

Entering the Division I college ranks for the first time in 2001 as an assistant coach at Lamar University in Texas, he spent a year there before returning to Vermont as head coach at Division III Norwich University, where his four-year mark was 93-28. The records in the last two of his four years at Norwich were 25-4 in 2004-05 and 25-5 in 2005-06. At Norwich, he was a finalist for New England Coach of the Year and was conference co-Coach of the Year, with his team leading the nation in scoring defense one year and advancing to the second round of the Division III national tournament.

In naming Lanpher to lead the fortunes of NJIT women's basketball, Lenny Kaplan, the Director of Athletics, cited the coach's background. "We were looking for someone who had been a part of multiple successful programs," said Kaplan. "Steve's head coaching experience, particularly at Norwich, combined with his work at Vermont and UMass helped make him a great fit for us. We look forward to his guiding our program toward new levels of success in Division I."

Said Lanpher, the new coach of the Highlanders: "I am both humbled and honored to be selected as the next women's basketball coach at NJIT. I would like to thank President (Dr. Joel) Bloom, (Vice President) Dr. (Jack) Gentul, the entire search committee, and especially Lenny Kaplan for the faith and trust they have shown me. I am extremely excited about leading the women's basketball program to greater heights, both on and off the floor. I will work tirelessly to make our program one of honor, pride and respect and a source of pride for the entire NJIT community."





Assistant Coach/ Defensive Coordinator Mark McCaleb



McCaleb has served as both an assistant and a head coach at the collegiate level, beginning in 1996. He has been an assistant at three different Division I programs (Central Connecticut, Northeastern, and Delaware) and was a successful head coach in a seven-year stretch, beginning in 2003-04 at Division III Saint Joseph's (Maine) and continuing in the ensuing six years at Division II Bridgeport.

Before joining the staff at NJIT, he was an assistant coach in 2011-12 at Division III Springfield.

McCaleb earned his master's degree from Springfield after graduating from the University of Massachusetts with a bachelor's degree in 1989.

At Bridgeport, McCaleb took over a program that was 3-24 overall in 2003-04, the year before he took over, and led a stunning 19-win leap to 22-9 in his first season at the helm.

McCaleb guided Bridgeport to two NCAA Tournament appearances (2004-05 and 2009-10), posting a 103-71 record, including a 20-10 mark in his final season (2009-10). His record at Saint Joseph's was 13-12, giving him a seven-year head coaching mark of 116-83.

In his most recent pre-NJIT Division I stop in 2010-11, he assisted at Delaware, which won 20 games and reached the Women's National Invitation Tournament. He assisted at Central Connecticut from 1996 to 2001 and at Northeastern from 2001 to 2003.

Assistant Coach/ Recruiting Coordinator La Kea Jones



La Kea Jones joined the NJIT women's basketball coaching staff in the summer of 2010 after two one-year stints as an assistant at Division I programs Mount Saint Mary's (MD) (2008-09) and Southeast Missouri State University (2009-10).

At Southeast Missouri State, her team was honored by its peer players and coaches in the Ohio Valley Conference with the conference's team Sportsmanship

Award. The 2009-10 Redhawks were the fourth-youngest Division I team in the nation, with nine freshmen on the roster.

While at Mount St. Mary's, she helped coach the team to a 14-16 record, a six-game improvement from the previous year and the best record for the program since the 2000-01 season.

Her duties included assisting in the development of both guards and post position players, scouting, film exchanges, editing game film, recruiting as well organizing travel and team meal arrangements.

She moved into coaching after a four-year Division I playing career for Virginia Commonwealth University, where she started every season at point guard from 2004 to 2008.

She graduated with rankings in the VCU program's top 10 in five career categories. She was first in games played (121, with 109 starts) and minutes played. She ranked third all-time in assists, with 424, including 159 assists during her senior year, which ranks fifth on the school's single-season charts. She also ranked eighth in career steals, with 177, and 10th in career three-pointers made.

Assistant Coach Epiphany Smith

During her senior season she played in a school record 1,129 minutes.

Jones averaged a career-high 8.5 points per game as a sophomore. Her senior year her averages were 4.2 ppg, 4.7 assists and 1.9 steals per game. Her 159 assists during her senior campaign led the Colonial Athletic Association. She recorded 31 double-digit scoring games in her career.

Jones posted a 67-54 career playing record with the VCU Rams and helped the program to its second postseason berth and best record in program history in her senior campaign.

Virginia Commonwealth finished the 2007-08 season with a 26-8 mark, made an appearance in the school's first-ever CAA Championship Game and advanced to the second round of the Women's National Invitational Tournament, the deepest trip into postseason in program history.

Jones graduated with a bachelor's degree in criminal justice from Virginia Commonwealth in 2008.

She is from Clinton, MD, and graduated from National Christian Academy there before heading to college in Virginia.

She resides in Jersey City, NJ.



Epiphany Smith is in her first full-time college coaching position, having joined coach Steve Lanpher's NJIT staff in the summer of 2012.

Smith, who hails from Arkansas, represented two colleges on the basketball court, earning her degree from Saint Anselm College in Manchester, NH, receiving her BS in Natural Science in May 2012.

A one-year starter and captain at Division I Texas-Pan American, Smith was named Independent Newcomer of the Year and All-Independent All-Star in 2008-09 after leading the Broncs with 4.3 assists per game and ranking second with 10 points per game.

She completed her playing eligibility at Division II Saint Anselm in 2012, playing three seasons for the Hawks. A second-team all-conference selection in one of the nation's top Division II conferences, the Northeast-10, Smith led the Hawks with 14.3ppg and 3.4apg while ranking second in the league in three-pointers made per game in 2009-10.

Smith worked as an instructor at clinics conducted by Kate Connolly Basketball Clinic and Saint Anselm's Women's Basketball Clinic.

"I am very pleased to have Epiphany join our coaching staff at NJIT", first-year head coach Steve Lanpher stated. "She played with passion, energy and integrity, which I look forward to her bringing these same attributes to NJIT."

2014-15 Roster

NUMERICAL

NO.	NAME	YR	HT	POS	HOMETOWN/HIGH SCHOOL (LAST COLLEGE/HS LOCATION)
1	Alana Dudley	So.	5-9	G	Whippany, NJ/Whippany Park
2	Kim Tullis	Sr.	5-9	G	Silver Spring, MD/Our Lady of Good Counsel
3	Alyssa Albanese	Sr.	5-3	G	Fort Washington, MD/Elizabeth Seton
4	Ruta Vetra	So.	6-0	G	Jurmala, Latvia/Our Lady of Mercy Academy (Newfield, NJ)
10	Ronni Grandison	Jr.	5-10	G/F	West Chester, OH/Lakota West (UMass)
11	Nicole Maticka	Sr.	6-3	C	Bratislava, Slovakia /Life Center Academy (Burlington, NJ)
12	Olivia Dudley	So.	5-9	G	Whippany, NJ/Whippany Park (Stony Brook redshirt)
14	Martina Matejckova	Sr.	5-11	F	Banska Bystrica, Slovakia /Sports Gymnasium BB
21	Maria Ruban	Fr.	6-5	C	Kiev, Ukraine /Our Lady of Mercy Academy (Newfield, NJ)
24	Camerin Spahn	So.	6-0	G	Freehold, NJ/Freehold
25	Bianca Picard	Fr.	5-6	G	Skippack, PA/Souderton
34	Leah Horton	So.	6-1	F	Macungie, PA/Emmaus (Temple)
	Kelly Guarino*	Fr.	5-7	G	Thiells, NY/Albertus Magnus

ALPHABETICAL

NO.	NAME	YR	HT	POS	HOMETOWN/HIGH SCHOOL (LAST COLLEGE/HS LOCATION)
3	Alyssa Albanese	Sr.	5-3	G	Fort Washington, MD/Elizabeth Seton
1	Alana Dudley	So.	5-9	G	Whippany, NJ/Whippany Park
12	Olivia Dudley	So.	5-9	G	Whippany, NJ/Whippany Park (Stony Brook redshirt)
10	Ronni Grandison	Jr.	5-10	G/F	West Chester, OH/Lakota West (UMass)
	Kelly Guarino*	Fr.	5-7	G	Thiells, NY/Albertus Magnus
34	Leah Horton	So.	6-1	F	Macungie, PA/Emmaus (Temple)
14	Martina Matejckova	Sr.	5-11	F	Banska Bystrica, Slovakia /Sports Gymnasium BB
11	Nicole Maticka	Sr.	6-3	C	Bratislava, Slovakia /Life Center Academy (Burlington, NJ)
25	Bianca Picard	Fr.	5-6	G	Skippack, PA/Souderton
21	Maria Ruban	Fr.	6-5	C	Kiev, Ukraine /Our Lady of Mercy Academy
24	Camerin Spahn	So.	6-0	G	Freehold, NJ/Freehold
2	Kim Tullis	Sr.	5-9	G	Silver Spring, MD/Our Lady of Good Counsel
4	Ruta Vetra	So.	6-0	G	Jurmala, Latvia/Our Lady of Mercy Academy (Newfield, NJ)

*--will sit out the 2014-15 season due to off-season surgery

PRONUNCIATION GUIDE

Alyssa Albanese al-ben-EEZ

Martina Matejckova MAR-tin-a ma-CHEEK-uh-va

Nicole Maticka ma-TEE-ska

Maria Ruban last name is like "Rubin"

Ruta Vetra ROOT-a VET-ra

Seniors



Junior



Sophomores



Freshmen



2

Kim Tullis**SR | 5-9 | Guard | Silver Spring, MD/Our Lady of Good Counsel****2014-15:** Co-captain.**2013-14:** Only player to start every game (29). ... scored in double-figures two times with a career-high 11 points at Delaware State (January 7).**2012-13:** Played in 17 games. ... grabbed a career-high six rebounds at Houston Baptist (March 9).**Team Note:** 2012-13 Great West Conference Tournament Champions. ...The 16 wins are the most in the Division I era and tied for the third-most in program history (16 wins in 1995-96 in Division III; 16 wins in 2002-03 in Division II). The team won its last 5 straight and 8 of the last 9.**2011-12:** Appeared in 21 games as a freshman. ... averaged 5.2mpg. ...season-high 4 points at Houston Baptist (Feb. 18).**Prior to NJIT:** Hails from the DC suburbs of Maryland (born in Cheverly, resides in Silver Spring) ... Came college having been a complementary player on a loaded high school team. Her senior team at Our Lady of

Good Counsel in Olney, MD, posted a 29-5 overall record in 2010-11 and was the 12th-ranked team in the country and second in Maryland on the authoritative web site maxpreps.com (ESPN Rise listed her team 48th nationally). ...Tullis was an honorable mention all-conference selection in the WCAC, where her team was 15-3. Her high scoring game was 13 points in a season-opening win against Bullis School, which went on to a 21-7 finish.

Personal: Kimberly A. Tullis. ... daughter of Kenneth and Janis Tullis. ... business major. ... born 3/31/93 in Cheverly, MD.**Career Highs**

POINTS: 11 at Delaware State-1.7.14

REBOUNDS: 9 at Howard-11.17.13

ASSISTS: 6 vs. Dartmouth-1.18.14

STEALS: 2 vs. Bucknell-11.30.13

BLOCKS: 3 vs. Brown-1.11.14

Yr	GP/GS	FG-FGA	%	3FG-A	%	FT-FA	%	Reb-Avg.	Pts-Avg.	A-Blk-Stl
11-12	21-0	3-12	.250	1-4	.250	3-4	.750	10-0.5	10-0.5	4-2-4
12-13	17-0	5-14	.357	1-6	.167	2-5	.400	21-1.2	13-0.8	5-1-6
13-14	29-29	34-106	.321	14-51	.275	14-51	.275	84-2.9	96-3.3	49-7-17
Total	67-29	42-132	.318	16-61	.262	19-38	.500	115-1.7	119-1.8	58-10-27





Alyssa Albanese

SR | 5-3 | Guard | Fort Washington, MD/Elizabeth Seton



2014-15: Co-captain.

2013-14: Led the Highlanders with 115 assists (NJIT D1 season record; 4.0apg) , aising her career mark to 234 with one season left to play. ... set the NJIT D1 record for assists in a game twice (10 vs. FDU on December 19; 10 vs. UMass Lowell on March 4). ... Superb game with a points-assists double-double, netting a career-high 23 points (6-11 field goals, 3-5 on threes, and 8-10 at the foul line) and matching her career-best 10 assists against UMass Lowell (3/4/14). ... notched 10 double-figure scoring games.

2012-13: Led the team with 77 assists (2.5apg). Dished out a season-high 7 assists vs. Utah Valley (Jan. 26). appeared in 31 contests (10 starts). ... Scored a season-high 18 vs. Texas-Pan American on (Jan . 12). ... scored 108 points in her second season at NJIT.

Team Note: 2012-13 Great West Conference Tournament Champions. ...The 16 wins are the most in the Division I era and tied for the third-most in program history (16 wins in 1995-96 in Division III; 16 wins in 2002-03 in Division II). The team won its last 5 straight and 8 of the last 9.

2011-12: Played in every game but one (29) at the point guard position. ... averaged 15.6mpg as a freshman. ... scored a season-high 10 points at Lehigh (Dec. 7) and dished out a season-high 6 assists vs. Chicago State (March 3).

Prior to NJIT: First-team all-county player for Elizabeth Seton High School in Bladensburg, MD, about 10 miles outside of Washington, DC ... Received an 85 “scouts grade” (described on the ESPN Rise web site as a “player is a multiyear starter at the mid-major level) and three stars (out of five possible) after ranking 79th at her position in the 2011 class from the ESPN unit that covers high school sports and tracks college recruiting. ...As a senior, she averaged 10.3 points and shot an impressive .824 (56-68) at the foul line. She had 11 double-figure scoring games, including a high of 26 vs. St. Mary’s Ryken. Despite her small stature, she routinely battled her way to at least five rebounds and grabbed 11 in a game against Bishop O’Connell. Adding to her value as a point guard, the position that controls the ball late in games, she never missed more than two free throws in a game and one of those times was a 10-for-12 effort in the season opener against St. Vincent Pallotti, as part of a 22-point game.

Personal: Alyssa Albanese. ... daughter of Maria Albanese. ... information technology major. ... born on 2/11/93 in Hampton, Virginia.

Career Highs

POINTS: 23 vs. UMass Lowell—3.4.14

REBOUNDS: 7 vs. Utah Valley-1.26.13

ASSISTS: 10 vs. UMass Lowell—3.4.14/10 vs. FDU-12.10.13*

STEALS: 5 at St. John’s (NY)-12.28.12

3PT-FIELD GOALS MADE: 2 at LIU Brooklyn-11.20.13/ at Stony Brook-11.8.13

* NJIT D1 single-game record

Yr	GP/GS	FG-FGA	%	3FG-A	%	FT-FA	%	Reb-Avg.	Pts-Avg.	A-Blk-Stl
11-12	29-10	24-73	.329	2-13	.154	18-31	.581	40-1.4	68-2.3	42-0-25
12-13	31-10	43-128	.336	0-12	.000	22-31	.710	52-1.7	108-3.5	77-1-33
13-14	29-27	73-230	.317	19-63	.302	59-84	.702	69-2.4	224-7.7	115-72-38
Total	89-47	140-431	.325	21-88	.239	99-146	.678	161-1.8	400-4.5	234-2-96





Nicole Maticka

SR | 6-3 | Center | Bratislava, Slovakia/Life Center Academy
(Burlington, NJ)



2014-15: Ranks second all-time at NJIT with 163 career blocks and one season remaining to play.

2013-14: Played in 14 games, with five starts. ... missed 15 games from December 5 due to a foot injury and returned to action on February 17 against Rutgers-Newark, blocking 5 shots, scoring 4 points and pulling down 4 rebounds.

2012-13: Played in 30 games, starting two. ... Notched 54 blocks (1.8bpg) to rank second on the team. ... Matched her own single-game school-record with 9 blocks vs. Colgate (Feb. 5).

Team Note: 2012-13 Great West Conference Tournament Champions. ...The 16 wins are the most in the Division I era and tied for the third-most in program history (16 wins in 1995-96 in Division III; 16 wins in 2002-03 in Division II). The team won its last 5 straight and 8 of the last 9.

2011-12: Completed her freshman season setting numerous school records at NJIT. ...the 6-foot-4 freshman was 12th in the nation in blocks per game (2.8), with 83 blocked shots on the season. ... The 83 blocked shots is a NJIT season school record, which also made her the career leader for the Division I era (since 2006-07) with one season complete (since surpassed) ... Set the school record for blocks in a game with 9 vs. Longwood on February 26. ... Played in all 30 games, starting 23 contests and averaging 6.6ppg and 2.8rpg. ... Season-high 17 points vs. Chicago State (March 3).

Prior to NJIT: As a senior at Life Center Academy in South Jersey, she posted strong numbers in 2010-11, including one that jumps out in particular—4.9 blocked shots per game. Maticka had a high of 12 blocks in one game (against Academy of the New Church from PA) and seven other games with at least five blocks. ...She also checked in with averages of 9.7 points, 6 rebounds, 1.4 steals and 1.3 assists per game. Her scoring high was 18 points vs. Girard College, a boarding school from Philadelphia, and her rebounding high was nine against The Hun School of Princeton, NJ. ...Maticka, from the national capital, Bratislava, played on her country's u16, u18, and u20 teams.

Personal: Nicole Maticka. ... daughter of Karin Maticka and Oto Maticky. ... business major. ... born 3/3/93 in Bratislava, Slovakia.

Career Highs

POINTS: 17 vs. Chicago State-3.3.12

REBOUNDS: 9 vs. Wagner-11.19.11

BLOCKS: 9 vs. Colgate-2.5.13* 9 vs. Longwood-2.26.12*

ASSISTS: 3 at Penn-1.11.12

STEALS: 3-two times

*NJIT School/Division I single-game record

Yr	GP/GS	FG-FGA	%	3FG-A	%	FT-FA	%	Reb-Avg.	Pts-Avg.	A-Blk-Stl
11-12	30-23	81-185	.438	17-52	.327	20-31	.645	130-4.3	199-6.6	24-83-23
12-13	30-2	42-98	.429	4-18	.222	12-16	.750	77-2.6	100-3.3	16-54-20
13-14	14-5	26-63	.413	6-21	.286	5-7	.714	36-2.6	63-4.5	11-26-6
Total	74-30	149-346	.431	27-91	.297	37-54	.685	243-3.3	362-4.9	51-163-49



14

Martina Matejcikova**SR | 5-11 | Forward | Banska Bystrica, Slovakia/
Sports Gymnasium BB**

2013-14: Played in all 29 games, with 23 starts. ... Second-leading scorer on the team with 9.4ppg. Paced the Highlanders from behind the 3-point arc, knocking down 33 three-pointers. ...Sank a sizzling 5 threes against UMass Lowell (March 4). ... Scored in double-figures 10 times, with a career-high 27 points on two occasions (at Maryland-Eastern Shore, January 29) and (vs. UMass Lowell, March 4). ... Against UMass Lowell, she did most of her damage in 17 minutes work in the second half, when she scored 18 and made all four of her 3-point tries and 6-for-9 on all field goal attempts, plus the two foul shots.

2012-13: Played in all 31 games, with five starts and averaged 3.8ppg and 2.8rpg. ... Notched 13 points vs. Rutgers-Newark (November 18).

Team Note: 2012-13 Great West Conference Tournament Champions. ...The 16 wins are the most in the Division I era and tied for the third-most in program history (16 wins in 1995-96 in Division III; 16 wins in 2002-03 in Division II). The team won its last 5 straight and 8 of the last 9.

2011-12: Joined the NJIT squad in January of 2012. ... played in nine games averaging 12.9mpg. ... notched a career-high 10 points vs. Houston Baptist (February 18).

Prior to NJIT: Can play both forward positions... Was a reserve on the Slovakia 2010 u18 national team, playing in 6 of the team's 8 games. Her tournament high was 4 points against Spain, which would go on to finish second in the tournament. Two years earlier, playing in the 2008 u16 European Championships, Matejcikova appeared in 6 of the team's 7 games, logging over 20 minutes in each game, while netting a high of 10 points vs. the Netherlands. She averaged 5.2 points and 4.7 rebounds in that tournament, posting two 7-rebound outings.

Personal: Martina Matejcikova. ...daughter of Lubica Matejcikova and Miroslav Matejcik. ... international business major. ... born 7/19/92 in Banska Bystrica.

Career Highs

POINTS: 27 vs. UMass Lowell—3.4.14/at UMES-1.29.14

REBOUNDS: 9 at Houston Baptist-1.19.12

ASSISTS: 8 vs. Rutgers-Newark—2.17.14

STEALS: 3-four different times

BLOCKS: 4 vs. Rutgers-Newark—2.17.14

3PT FIELD GOALS MADE: 5 vs. UMass Lowell—3.4.14

Yr	GP/GS	FG-FGA	%	3FG-A	%	FT-FA	%	Reb-Avg.	Pts-Avg.	A-Blk-Stl
11-12	9-0	13-27	.481	7-14	.500	2-6	.333	19-2.1	35-3.9	7-2-4
12-13	31-5	44-135	.326	19-62	.306	12-21	.571	70-2.3	119-3.8	23-16-29
13-14	29-23	97-247	.393	97-247	.393	33-97	.635	87-3.0	274-9.4	56-35-27
Total	69-28	154-409	.377	59-173	.341	61-101	.604	176-2.6	428-6.2	86-53-60



1

Alana Dudley

SO | 5-9 | Guard | Whippany, NJ/Whippany Park HS



2014-15: True point guard with a good vision of the court to go along with her quick speed and ball handling skills. 2013-14: Played in all 29 games, with 3 starts, the first at South Dakota State (December 2. ... Averaged 5.7ppg. ... Scored career-high 14 at Howard - 6-for-9 from the field and 2-for-2 from downtown. ... Scored the game-winning basket at LIU-Brooklyn with :00.2 remaining on the clock. ... Sank 30 3-pointers to rank second on the team (recorded career-high 3 three-pointers vs. VCU December 28).

Prior to NJIT: Point guard, was a 1,000-point scorer at Whippany Park High School and led the Wildcats to an 18-9 overall record, earning All-Daily Record first-team honors, All-Morris and All-Group 1 second-team accolades in her senior year. ...As a senior, she averaged 18.6ppg, 2.2rpg, 2.5apg and 2.2spg while registering 503 points. She finished with 1,096 career points, becoming the 11th player at Whippany Park HS to reach the 1,000-point milestone.

Personal: Alana Elizabeth Dudley. ... daughter of Moss and Gina Dudley. ... a member of the National Honor Society, Alana is enrolled in NJIT's Albert Dorman Honors College as a mathematical sciences major. Her older sister, Olivia, is a teammate. ... born 9/7/95 in Englewood, NJ.

Career Highs

POINTS: 14 vs. Howard-11.17.13

REBOUNDS: 4 vs. Marshall-1.5.14

ASSISTS: 4 vs. Northeastern-11.23.13 4 vs. VCU—12.28.13

STEALS: 3 at Seton Hall-12.20.13

BLOCKS: 1 at URI-12.7.13

Yr	GP/GS	FG-FGA	%	3FG-A	%	FT-FA	%	Reb-Avg.	Pts-Avg.	A-Blk-Stl
13-14	29/3	58-152	.382	30-78	.385	18-29	.621	39-1.3	164-5.7	40-3-14
Total	29/3	58-152	.382	30-78	.385	18-29	.621	39-1.3	164-5.7	40-3-14



4

Ruta Vetra**SO | 6-0 | Guard | Jurmala, Latvia/Our Lady of Mercy Academy (Newfield, NJ)**

2014-15: Multi-faceted player who can play multiple positions from point guard to power forward.

2013-14: Played in 23 out of 29 games as a freshman. ... Scored a career-high 10 points with 5 rebounds vs. Harvard (1/15/14).

Prior to NJIT: Ruta Vetra came to the United States from Latvia and enrolled at Our Lady of Mercy Academy in 2011-12. At the school in Newfield, NJ, she was a teammate of fellow Highlander newcomer Maria Ruban. ... Vetra, who overcame a season-ending knee injury in 2011-12, returned to the Villagers the following season shooting 80 percent from the free throw line, averaging nine rebounds a game and less than 10 points a game. ... She played for the Latvian national u16 team, which captured the regular season title while earning MVP playoff honors. Her team placed third in the European Championship Division B.

Personal: Ruta Vetra. ... daughter of Gundars and Argita Vetra. ... A member of the National Honor Society, Vetra majors in communications at NJIT. ... Father, Gundars, played professionally in Europe and was the first Latvian to play in the NBA when he spent the 1992-93 season as a reserve guard and forward for the Minnesota Timberwolves. Her sister, Laura, played basketball for Fairfield (2009-13) after attending Forth Worth Christian School in Texas. ... born 3/2/95 in Riga, Latvia.

Career Highs

Points: 10 vs. Harvard-1.15.14

REBOUNDS: 5 vs. Harvard-1.15.14

ASSISTS: 2 vs. Marshall-1.5.14

STEALS: 1 vs. Marshall-1.5.14

BLOCKS: 1 at URI-12.7.13

Yr	GP/GS	FG-FGA	%	3FG-A	%	FT-FA	%	Reb-Avg.	Pts-Avg.	A-Blk-Stl
13-14	23/0	11-38	.289	2-6	.333	17-25	.680	26-1.1	41-1.8	8-2-1
Total	23/0	11-38	.289	2-6	.333	17-25	.680	26-1.1	41-1.8	8-2-1



12

Olivia DudleySO | 5-9 | Guard | Whippany, NJ/Whippany Park HS
(Stony Brook)

2013-14: Played in 18 games. ... Scored a career-high 9 points vs. UAlbany (12/10/13). ... Went 3-for-3 from behind the arc in 21 minutes vs. UAlbany.

Prior to NJIT: A guard and the older sister of NJIT teammate Alana, Olivia starred at Whippany Park High School, departing as the all-time leading scorer (boy or girl) with 1,752 points. She averaged 18.5ppg in her senior season, leading the Wildcats to the Group I State finals in 2012. ...She guided the Wildcats in capturing the North Jersey Section II Group I Championship (2011-12), North 2 Group I Sectional title (2012) and throughout her 4-year career at Whippany Park, recorded four consecutive 20+ win seasons. ...All-Northwest Jersey Athletic Conference/Liberty Division first-team honors as a junior and senior while adding All-Liberty second-team accolades (as a senior) to her resume. ... She joins younger sister (Alana) after spending one season at Stony Brook (2012-13). Olivia, who was a walk-on for the Seawolves, did not appear in any games, and came to NJIT with four years of eligibility.

Personal: Olivia Nicole Dudley. ... daughter of Moss and Gina Dudley. ... biology major. ... Plays alongside younger sister (Alana). ... born 11/23/93 in Englewood, NJ.

Career Highs

POINTS: 9 vs. UAlbany-12.10.13

REBOUNDS: 2 vs. Bucknell-11.30.13

ASSISTS: 2 vs. FDU-12.19/2 vs. UAlbany-12.10

STEALS: 1 vs. FDU-12.19.13

Yr	GP/GS	FG-FGA	%	3FG-A	%	FT-FA	%	Reb-Avg.	Pts-Avg.	A-Blk-Stl
13-14	18/0	8/44	.182	8-32	.250	0-0	.000	18-1.0	24-1.3	9-0-2
Total	18/0	8/44	.182	8-32	.250	0-0	.000	18-1.0	24-1.3	9-0-2



24

Camerin Spahn

SO | 6-0 | Guard | Freehold, NJ/Freehold



2014-15: Versatile forward who has the ability to score inside as well as outside.

2013-14: Played in all 29 contests off the bench for the Highlanders. ... Scored in every game but eight. ... Career-high 8 pts vs. VCU (December 29).

Prior to NJIT: Four-year starter at Freehold High School, led her senior team to its first NJSIAA Central Jersey Group III Sectional Championship in a double overtime victory over Neptune High School. Spahn made the two biggest free throws of her high school career, hitting the game-winner in the final 10 seconds against Neptune. She also helped guide the Colonials to a 23-6 mark and Central Jersey Group III crown in 2012-13. ... An All-B North Division first-team and All-Shore third-team honoree in her senior season, Spahn averaged 13.3ppg, 8.2rpg and 3.5apg while closing out her Colonial career scoring 1,046 points.

Personal: Camerin M. Spahn. ... daughter of Ken and Karen Spahn. ... a three-year member of the National Honor Society and Student Council Class President, she is enrolled in NJIT's Albert Dorman Honors College and majors in civil engineering. ... Spahn was recognized by New Jersey Association of Intercollegiate Athletics for Women "Woman of the Year" award. The NJIAIW presents the award to one outstanding athlete from each school in the state, based on athletic excellence, academic success and community service. ... Her father, Ken, received a Master of

Science and Management Engineering from NJIT in 1992. ... born 4/15/95 in New Brunswick, NJ.

Career Highs

POINTS: 8 vs. VCU-12.28.13

REBOUNDS: 6 at Seton Hall-12.20.13

ASSISTS: 3 at SDSU-12.3.13/Lehigh-11.11.13

STEALS: 1 at SDSU-12.2.13

BLOCKS: 1—two times

Yr	GP/GS	FG-FGA	%	3FG-A	%	FT-FA	%	Reb-Avg.	Pts-Avg.	A-Blk-Stl
13-14	29/0	30-87	.345	4-19	.211	10-18	.556	57-2.0	74-2.6	12-3-6
Total	29/0	30-87	.345	4-19	.211	10-18	.556	57-2.0	74-2.6	12-3-6



10

Ronni Grandison

JR | 5-10 | Guard | West Chester, OH/Lakota West (UMass)



2014-15: Eligible for competition after sitting out 2013-14 as a transfer from UMass. ... Expected to be an important player immediately.

2013-14: Redshirted under NCAA transfer rules.

Prior to NJIT: Played a year-and-a-half at UMass for the Minutewomen (2011-12) and departed after the first semester of the 2012-13 season. ...Grandison, a two-year letter-winner at Lakota West High School in Ohio, guided the Firebirds to a Sectional title in 2009-10. She earned back-to-back honors, tabbing Greater Miami Conference second team honors in 2009-10 and 2010-11 while also tabbing District 15 All-Star honors in her junior and senior seasons.

Personal: Ronni Christina Grandison. ... Daughter of Ronnie and Barb Grandison. ... Her father, Ronnie, played four seasons in the NBA for five different teams (Boston Celtics, Miami Heat, New York Knicks, Atlanta Hawks and Charlotte Hornets), also playing in the CBA and overseas. ...majors in science technology & society at NJIT. ... born 11/2/92 in Rochester, MN.

21

Maria Ruban

FR | 6-5 | Center | Kiev, Ukraine/Our Lady of Mercy Academy (Newfield, NJ)



2014-15: Will see her first college action after attending NJIT, but redshirting in 2013-14. ... Adds excellent height to the NJIT roster.

Summer 2014: Made the Ukraine U20 National Women's Team and represented her country in the European Championships in Italy from July 3 to July 13.

2013-14: Redshirted at NJIT, practicing with the Highlanders, but not appearing in a game.

Prior to NJIT: The 6-foot-5 center from Kiev, Ukraine, attended Our Lady of Mercy Academy in Newfield, NJ, where she was a teammate of fellow Highlander Ruta Vetra. Ruban, who was 16 when she arrived to the United States, played her junior and senior season for the Villagers. She represented Ukraine on the u16 national team.

Personal: Maria Ruban. ... daughter of Oleg and Tatiana Ruban. ... Maria's dad, Oleg Ruban, was a long time professional player in Europe and he continues as one of the top coaches in Ukraine. He has coached age group youth national teams for both genders and is also a top club coach in Ukraine ... undecided- engineering major. ... born 11/5/94 in Kiev, Ukraine.

34

Leah Horton

SO | 6-1 | Forward | Macungie, PA/Emmaus (Temple)



2014-15: Talented post player who is eligible after redshirting at NJIT under NCAA transfer rules.

2013-14: Practiced, but could not compete for NJIT under NCAA transfer rules.

Prior to NJIT: Played one season as a Temple University Owl in 2012-13. ...Horton earned Lehigh Valley first-team all-conference accolades as a junior and senior at Emmaus High School, which is a few miles from Allentown. She averaged 14.4ppg as a junior and 12.2ppg in her senior season.

Personal: Leah Vanette Horton. ... daughter of Brian and Etta Horton. ... majors in Law, Technology, and Culture at NJIT. ... born 3/30/94 in Reading, PA.

25

Bianca Picard

FR | 5-6 | Guard | Skippack, PA/Souderton



2014-15: True freshman will compete for playing time as a guard.

Prior to NJIT: 1,000-point scorer as a senior at Souderton High School. ... the 5-foot-6 point guard earned Pennsylvania Interscholastic Athletic Association (PIAA) all-Conference first team and Wissahickon Tournament MVP. ... Surpassed 1,000 career points in high school on February 18 of her senior year.

Personal: Bianca Ashley Picard. ... daughter of Sara and Mark Picard. ... Her older brother, AJ, averaged 17 ppg as a senior at Cabrini College in 2013-14 ... communications (media arts) major. ... born 4/12/96 in Abington, PA.

13

Kelly Guarino

FR | 5-6 | Guard | Skippack, PA/Souderton



2014-15: After suffering three ACL tears in high school, Guarino will redshirt the 2014-15 season at NJIT to rehabilitate her left knee.

Before NJIT: Guarino, who did not play in her junior season at Albertus Magnus High School in Rockland County, NJ, due to injury, earned New York State Sportswriters Association All-State, All-League and All-Section during her sophomore and senior seasons. ... In her final season, Guarino was selected all-Hudson Valley/Westchester and on the All-Metro team. ... played AAU for the Hudson Valley Elite.

Personal: Kelly Elizabeth Guarino. ... daughter of Deborah McGovern and Anthony Guarino. ... business major. ... born 4/4/96 in Nyack, NY.

2013-14 Statistics & Results

RECORD:	OVERALL	HOME	AWAY	NEUTRAL
ALL GAMES	8-21	6-8	2-13	0-0
CONFERENCE	0-0	0-0	0-0	0-0
NON-CONFERENCE	8-21	6-8	2-13	0-0

#	Player	gp-gs	min	avg	Total		3-Point		F-Throw		Rebounds										pts	avg
					fg-fga	fg%	3fg-fga	3fg%	ft-fa	ft%	off	def	tot	avg	pf	dq	a	to	blk	stl		
15	Shakia Robinson	29-25	793	27.3	146-249	.586	0-0	.000	38-78	.487	83	107	190	6.6	90	1	25	100	12	28	330	11.4
14	Martina Matejcikova	29-23	723	24.9	97-247	.393	33-97	.340	47-74	.635	19	68	87	3.0	85	3	56	73	35	27	274	9.4
50	Uju Nwankwo	29-28	888	30.6	99-246	.402	0-0	.000	73-114	.640	79	166	245	8.4	89	2	39	58	45	15	271	9.3
03	Alyssa Albanese	29-27	896	30.9	73-230	.317	19-63	.302	59-84	.702	8	61	69	2.4	54	0	115	72	1	38	224	7.7
10	Alana Dudley	29-3	573	19.8	58-152	.382	30-78	.385	18-29	.621	7	32	39	1.3	43	0	40	51	3	14	164	5.7
13	Denisa Domiterova	25-5	287	11.5	40-118	.339	28-93	.301	8-9	.889	8	21	29	1.2	27	0	24	14	1	9	116	4.6
02	Kim Tullis	29-29	733	25.3	34-106	.321	14-51	.275	14-29	.483	30	54	84	2.9	37	1	49	37	7	17	96	3.3
24	Camerin Spahn	29-0	333	11.5	30-87	.345	4-19	.211	10-18	.556	15	42	57	2.0	42	1	12	25	3	6	74	2.6
11	Nicole Maticka	14-5	252	18.0	26-63	.413	6-21	.286	5-7	.714	15	21	36	2.6	39	0	11	8	26	6	63	4.5
04	Ruta Vetra	23-0	199	8.7	11-38	.289	2-6	.333	17-25	.680	8	18	26	1.1	21	0	8	7	2	1	41	1.8
12	Olivia Dudley	18-0	148	8.2	8-44	.182	8-32	.250	0-0	.000	3	15	18	1.0	15	0	9	13	0	2	24	1.3
Team											55	68	123		1		28					
Total.....		29	5825		622-1580	.394	144-460	.313	289-467	.619	330	673	1003	34.6	543	8	388	486	135	163	1677	57.8
Opponents.....		29	5825		653-1629	.401	154-462	.333	427-609	.701	387	700	1087	37.5	492	-	368	424	106	191	1887	65.1

TEAM STATISTICS	NJIT	OPP
SCORING	1677	1887
Points per game	57.8	65.1
Scoring margin	-7.2	-
FIELD GOALS-ATT	622-1580	653-1629
Field goal pct	.394	.401
3 POINT FG-ATT	144-460	154-462
3-point FG pct	.313	.333
3-pt FG made per game	5.0	5.3
FREE THROWS-ATT	289-467	427-609
Free throw pct	.619	.701
F-Throws made per game	10.0	14.7
REBOUNDS	1003	1087
Rebounds per game	34.6	37.5
Rebounding margin	-2.9	-
ASSISTS	388	368
Assists per game	13.4	12.7
TURNOVERS	486	424
Turnovers per game	16.8	14.6
Turnover margin	-2.1	-
Assist/turnover ratio	0.8	0.9
STEALS	163	191
Steals per game	5.6	6.6
BLOCKS	135	106
Blocks per game	4.7	3.7
ATTENDANCE	7161	7363
Home games-Avg/Game	14-512	15-491
Neutral site-Avg/Game	-	0-0

Score by Periods	1st	2nd	OT	Totals
NJIT	829	839	9	1677
Opponents	907	968	12	1887

Date	Opponent		Score	Att.
11-8-13	at Stony Brook	L	44-50	1630
11/11/13	at Lehigh	L	72-77	566
11/13/13	NEW HAMPSHIRE	L	40-53	766
11/17/13	at Howard	L	73-80	172
11/20/13	at LIU Brooklyn	W	60-58	485
11/23/13	at Northeastern	L	55-79	298
11/26/13	at St. Francis Brooklyn	L	53-58	115
11/30/13	BUCKNELL	W	61-59	716
12/2/13	at South Dakota State	L	46-71	1141
12/5/13	LAFAYETTE	L	45-61	500
12/07/13	at Rhode Island	L	42-57	324
12/10/13	UALBANY	L	64-75	500
12/19/13	FAIRLEIGH DICKINSON	W	84-71	399
12/21/13	at Seton Hall	L	48-74	427
12/28/13	VCU	L	72-77	594
12/30/13	WAGNER	W	58-52	300
1/2/14	CLEMSON	L	37-84	299
1/5/14	MARSHALL	L	56-57	300
1/7/14	at Delaware State	Lot	72-75	87
1/11/14	BROWN	W	48-43	499
1/15/14	HARVARD	L	56-75	900
1/18/14	DARTMOUTH	L	45-48	488
1/25/14	at Penn	L	48-84	273
01/29/14	at Maryland Eastern Shore	L	61-68	1010
02/03/14	at SIUE	L	54-59	502
2/17/14	RUTGERS-NEWARK	W	71-42	400
02/22/14	at Incarnate Word	W	57-48	225
3/4/14	UMASS LOWELL	W	87-75	500
03/08/14	at Hofstra	L	68-77	108

* - Conference game

Records

Individual Single Game Records

Points

37, Jessica Gerald vs. CSU Bakersfield, 1/11/08
36, Rayven Johnson at Texas-Pan American, 2/2/13
35, Sharon Kukal vs. Queens, 1/28/98
34, Jessica Gerald at Chicago State, 1/17/09
34, SchrKya Massey vs. Nyack, 1/23/02
34, Nevea Van Wright vs. Mount St. Vincent, 12/10/93

Rebounds

25, Dion McMillian vs. Bloomfield, 1/30/87
25, Wendy Gruenewald vs. St. Elizabeth, 12/3/92
23, Dion McMillian vs. Drew, 11/22/86

Assists

13, Jackie McCaffrey vs. Nyack, 2/25/05
12, Nicole Ballou vs. Felician, 1/15/02
11, Tamara McNair vs. St. Elizabeth, 2/5/97
11, Lauren Battista vs. Old Westbury, 1/28/95

Blocks

9, Nicole Maticka vs. Longwood, 2/26/12
9, Nicole Maticka vs. Colgate, 2/5/13
8, Nicole Maticka vs. Fairleigh Dickinson, 11/16/11

Steals

10, Tamika Fogg vs. Yeshiva, 2/24/96
10, Kristie Simpson vs. St. Joseph's, 2/19/96
10, Nevea Van Wright vs. Medgar Evers, 2/16/94

Field Goals

13, Nevea Van Wright vs. Mount St. Vincent, 12/10/93
12, Jessica Gerald at Chicago State, 1/17/09
11, Rayven Johnson at Texas-Pan American, 2/2/13

Field Goal-Attempts

29, SchrKya Massey vs. Holy Family, 2/2/02
29, Nevea Van Wright vs. St. Elizabeth, 1/29/94
27, Jessica Gerald at Chicago State, 1/17/09
23, Rayven Johnson at Texas-Pan American, 2/2/13

Three-Pointers

9, Rayven Johnson vs. Houston Baptist, 1/15/11

Three-Point Attempts

19, Jackie O'Connor vs. Goldey-Beacom, 2/3/01

Most 3FGs without missing

5-5, Nevea Van Wright vs. Mount St. Mary (NY), 12/4/93

Free-Throws Made

16, Tamika Fogg vs. John Jay, 12/7/96
14, Jessica Gerald at Maine, 11/29/08

Free-Throw Attempts

27, Tamika Fogg vs. John Jay, 12/7/96

Most FTs without missing

12-12, Odelia Pyron vs. Queens (NY), 12/11/99

Minutes

48, Kelly Crowe at Teikyo Post, 2/4/04

Triple Doubles

* Lauren Battista vs. Old Westbury, 1/28/95
(10 points, 11 rebounds, 11 assists)
* Kristie Simpson vs. St. Joseph's, 2/19/96
(22 points, 11 rebounds, 10 steals)

Team Single Game Records

Most Points: 97 at Teikyo Post (94) (2 OT), 2/4/04

Most Points, Regulation: 92 vs. Yeshiva (12), 2/24/96

Most Points Allowed: 122 vs. Saint Rose (27), 11/15/97

Least Points Allowed: 12 vs. Yeshiva, 2/24/96;

12 vs. New York Maritime, 2/19/94

Highest Victory Margin: 80 vs. Yeshiva (92-12), 2/24/96

Most Field Goals: 41 vs. Baruch, 2/12/96

Most Field-Goal Attempts: 92 vs. York (NY), 1/10/96

Most Three-Pointers: 17 (of 31) vs. Houston Baptist, 1/15/11

Most Three-Point Attempts: 45 vs. Goldey-Beacom, 2/3/01

Best Perfect Game (3FG): 6-6 vs. Mount St. Mary (NY), 12/4/93

Most Free-Throws Made: 37 vs. Norfolk State (37-47) 11/18/08

Most Free-Throw Attempts: 51 at Lafayette (35-51), 12/28/06

Best Perfect Game (FT): 12-12 vs. University of the Sciences
in Philadelphia, 12/22/01

Most Rebounds: 71 vs. John Jay, 12/7/96

Most Assists: 29 vs. NYIT, 1/22/00

Most Steals: 37 vs. Bard, 2/18/96

Most Blocked Shots: 14 vs. Baruch, 2/12/96

Most Turnovers Forced: 48 vs. Bard, 2/19/96

All-Time Career Records

Points (min. 1,000 pts)

1,504	Jessica Gerald	2007-11
1,497	Kelly Crowe	2003-07
1,322	Nevea Van Wright	1991-94, 95-96
1,248	Rayven Johnson	2009-12
1,165	Lindsey Reggo	2000-04
1,132	Jackie O'Connor	1997-2001
1,072	Selena Kershaw	2001-06
1,006	Wendy Gruenewald	1992-96
983	Nicole Ballou	1999-2003
978	SchrKya Massey#	2001-2003
922	Sharon Kukal	1997-99

Massey scored 71 points in two seasons at Loyola (Md.) College for a career total of 1,049.

^ Shakia Robinson scored 330 points in one season at NJIT and 679 points in three seasons at UMass for a career total of 1,009.

Scoring Average (min. 35 games)

18.5	SchrKya Massey (978/53)	2001-03
18.1	Sharon Kukal (922/51)	1997-99
16.3	Nevea Van Wright (1322/81)	1991-94, 95-96
14.9	Kristie Simpson (553/37)	1995-97
14.7	Jessica Gerald (1504/102)	2007-11
13.2	Kelly Crowe (1497/113)	2003-07

Rebounds

1,060	Wendy Gruenewald	1992-96
852	Rayven Johnson	2009-12
780	Selena Kershaw	2001-06
737	Uju Nwankwo	2010-14
696	Liliana Alvarez	1990-94
582	Taiwo Oyelola	2006-10
573	Kate Duncan	2000-04
572	Dion McMillian	1986-88
560	Ivana Seric	2007-11
542	Sharon Kukal	1997-99
508	Lauren Daley	1998-2000
489	Kehinde Oyelola	2006-10

Rebound Average (min. 35 games)

15.9	Dion McMillian (572/36 G)	1986-88
12.5	Wendy Gruenewald (1060/85 G)	1992-96
10.6	Sharon Kukal (542/51 G)	1997-99
9.5	Kristie Simpson (350/37 G)	1995-97
9.4	Lauren Daley (508/54 G)	1998-2000

Assists (min. 200)

396	Nicole Ballou	1999-2003
342	Jackie McCaffrey	2004-09
307	Kelly Crowe	2003-07
296	Aine O'Dwyer	2003-07
283	Erika Velez	2003-08
275	Ivana Seric	2007-11
256	Nevea Van Wright	1991-94, 95-96
243	Jackie O'Connor	1997-2001
234	Alyssa Albanese	2011-pres.
226	Kimberly Dweck	2009-12
213	SchrKya Massey	2001-2003

Blocks

179	Uju Nwanwko	2010-14
163	Nicole Maticka	2011-pres.
102	Liliana Alvarez	1990-94
100	Selena Kershaw	2001-2006
89	Wendy Gruenewald	1992-96
80	Lauren Daley	1998-2000
69	Ivana Seric	2007-11

Steals (min. 160)

282	Kelly Crowe	2003-07
203	Jackie McCaffrey	2004-09
193	Nicole Ballou	1999-2003
190	Erika Velez	2003-08
171	Nevea Van Wright	1991-94, 95-96
168	Jackie O'Connor	1997-2001
160	SchrKya Massey	2001-03

Games Played

118	Kimberly Dweck	2009-12
116	Rayven Johnson	2009-12
115	Jackie McCaffrey	2004-09
113	Kelly Crowe	2003-07
	Aine O'Dwyer	2003-07
112	Selena Kershaw	2001-06
111	Uju Nwankwo	2010-14
	Taiwo Oyelola	2006-10
	Jill Dickinson	2005-09
110	Kehinde Oyelola	2006-10
109	Nicole Ballou	1999-2003
	Kate Duncan	2000-04
	Lindsey Reggo	2000-04



Alyssa Albanese

Field Goals

460	Kelly Crowe	2003-07
458	Nevea Van Wright	1991-94, 95-96
443	Rayven Johnson	2009-12
431	Jessica Gerald	2007-10
429	Selena Kershaw	2001-06
427	Wendy Gruenewald	1992-96

Field-Goal Attempts

1,310	Jessica Gerald	2007-10
1,269	Nevea Van Wright	1991-94, 95-96
1,265	Lindsey Reggo	2000-04
1,211	Rayven Johnson	2009-12
1,132	Kelly Crowe	2003-07
1,121	Jackie O'Connor	1997-2001

Field-Goal Percentage (min. 150 made)

.490	Kristie Simpson (217/443)	1995-97
.456	Selena Kershaw (429/940)	2001-06
.449	Sharon Kukal (335/746)	1997-99
.424	Uju Nwankwo (306/722)	2010-14
.395	Lauren Daley (178/451)	1998-2000
.393	Ivana Seric (271/689)	2007-11

Three-Point Field Goals (min. 120)

222	Jackie O'Connor	1997-2001
192	Jessica Gerald	2007-11
171	Jill Dickinson	2005-09
164	Lindsey Reggo	2000-04
139	Nevea Van Wright	1991-94, 95-96
134	Kelly Crowe	2003-07
129	Denisa Domiterova	2011-14
123	Nicole Ballou	1999-03

Three-Point Attempts

720	Jackie O'Connor	1997-2001
660	Jessica Gerald	2007-11
539	Lindsey Reggo	2000-04
430	Nicole Ballou	1999-03
411	Nevea Van Wright	1991-94, 95-96

Three-Point Percentage (min. 50 made)

.361	Nevea Van Wright (139-411)	1991-94, 95-96
.348	Sarah Olson (103/296)	2011-12
	Jackie Lupo (72-207)	2002-05
.337	Denisa Domiterova (129/383)	2011-14
.336	Kehinde Oyelola (83-247)	2006-10
.308	Jackie O'Connor (222-720)	1997-2001
.304	Lindsey Reggo (164-539)	2000-04

Free-Throws Made

450	Jessica Gerald	2007-11
443	Kelly Crowe	2003-07
317	Rayven Johnson	2009-12
269	SchrKya Massey	2001-03
267	Nevea Van Wright	1991-94, 95-96
252	Sharon Kukal	1997-99

Free-Throw Attempts

659	Kelly Crowe	2003-07
595	Jessica Gerald	2007-11
436	Rayven Johnson	2009-12
406	Nevea Van Wright	1991-94, 95-96
388	Selena Kershaw	2001-06
365	Sharon Kukal	1997-99
364	SchrKya Massey	2001-03

Free-Throw Percentage (min. 100 made, .700)

.758	Taiow Oyelola (244-322)	2006-10
.756	Jessica Gerald (450-595)	2007-11
.739	SchrKya Massey (269-364)	2001-03
.727	Rayven Johnson (317-436)	2009-12
.703	Jill Dickinson (142-202)	2005-09
.702	Jackie O'Connor (174-248)	1997-2001

Division I Career Records

(competition began in 2006-07)

Points

1504	Jessica Gerald	2007-11
1248	Rayven Johnson	2009-12
865	Taiwo Oyelola	2006-10
806	Uju Nwankwo	2010-14
745	Kehinde Oyelola	2006-10
712	Jill Dickinson	2006-09
648	Ivana Seric	2007-11

Scoring Average (min. 50 games)

14.7	Jessica Gerald (1504/102 g)	2007-11
10.8	Rayven Johnson (1248/116 g)	2009-12
8.3	Jill Dickinson (712/86 g)	2006-09
7.8	Taiwo Oyelola (865/111 g)	2006-10
7.3	Uju Nwankwo (806/111 g)	2010-2014
6.7	Kehinde Oyelola (745/110 g)	2006-10
6.4	Ivan Seric (648/101 g)	2007-11

Rebounds

852	Rayven Johnson	2009-12
737	Uju Nwankwo	2010-14
582	Taiwo Oyelola	2006-10
560	Ivana Seric	2007-11
489	Kehinde Oyelola	2006-10

Rebound Average (min. 50 games)

7.3	Rayven Johnson (852/116 g)	2009-12
6.6	Uju Nwanwko (737/111)	2010-14
5.5	Ivana Seric (560/101)	2007-11
5.2	Taiwo Oyelola (582/111)	2006-10
4.4	Kehinde Oyelola (489/110)	2006-10

Assists

275	Ivana Seric	2007-11
234	Alyssa Albanese	2011-pres.
226	Kimberly Dweck	2009-12
205	Melanie Griffin	2008-12
140	Jackie McCaffrey	2007-09
114	Katie Pickielski	2006-10
109	Jill Dickinson	2006-09

Blocks

179	Uju Nwankwo	2010-14
163	Nicole Maticka	2011-pres.
69	Ivana Seric	2007-11
36	Taiwo Oyelola	2006-10
33	Katie Pickielski	2006-10
29	Kehinde Oyelola	2006-10
25	Maya Al-Shingieti	2007-09



Ruta Vetra

Steals

131	Taiwo Oyelola	2006-10
116	Ivana Seric	2007-11
114	Jill Dickinson	2006-09
112	Jessica Gerald	2007-11
109	Kehinde Oyelola	2006-10

Games

118	Kimberly Dweck	2009-12
116	Rayven Johnson	2009-12
111	Uju Nwankwo	2010-14
	Taiwo Oyelola	2006-10
110	Kehinde Oyelola	2006-10
107	Katie Pickielski	2006-10
102	Jessica Gerald	2007-11
101	Ivana Seric	2007-11

Field Goals

443	Rayven Johnson	2009-12
431	Jessica Gerald	2007-11
306	Uju Nwanwko	2010-14
282	Taiwo Oyelola	2006-10
249	Kehinde Oyelola	2006-10
236	Jill Dickinson	2006-09
196	Ivana Seric	2007-11

Field-Goal Attempts

1310	Jessica Gerald	2007-11
1211	Rayven Johnson	2009-12
780	Taiwo Oyelola	2006-10
722	Uju Nwankwo	2010-14
677	Kehinde Oyelola	2006-10
664	Jill Dickinson	2006-09
599	Katie Piekieski	2006-10

Field-Goal Percentage

(min. 2.5 made per game and 50 games played)

.424	Uju Nwankwo (111G/306-722)	2010-14
.393	Ivana Seric (101 G/271-689)	2007-11
.367	Kehinde Oyelola (110 G/249-677)	2006-10
.366	Rayven Johnson (116G/443-1211)	2009-12
.362	Taiwo Oyelola (111 G/282-780)	2006-10
.355	Jill Dickinson (86 G/236-664)	2006-09

Three-Point Field Goals

192	Jessica Gerald	2007-11
135	Jill Dickinson	2006-09
129	Denisa Domiterova	2011-14
103	Sarah Olson	2011-13
91	Nicole Maticka	2011-pres.
88	Alyssa Albanese	2011-pres.
83	Kehinde Oyelola	2006-10



Olivia Dudley

Three-Point Attempts

660	Jessica Gerald	2007-11
431	Jill Dickinson	2006-09
383	Denisa Domiterova	2011-14
296	Sarah Olson	2011-12
247	Kehinde Oyelola	2006-10
231	Taiwo Oyelola	2006-10

Three-Point Percentage (min. 20 made)

.348	Sarah Olson (103-296)	2011-12
.337	Denisa Domiterova (129-383)	2011-14
.336	Kehinde Oyelola (83-247)	2006-10
.333	Colleen Vogel (30-90)	2006-08
.291	Jessica Gerald (192-660)	2007-11
.247	Taiwo Oyelola (57-231)	2006-10

Free-Throws Made

450	Jessica Gerald	2007-11
317	Rayven Johnson	2009-12
244	Taiwo Oyelola	2006-10
194	Uju Nwankwo	2010-14
164	Kehinde Oyelola	2006-10
140	Katie Piekieski	2006-10
105	Jill Dickinson	2006-09

Free-Throw Attempts

595	Jessica Gerald	2007-11
436	Rayven Johnson	2009-12
322	Taiwo Oyelola	2006-10
299	Uju Nwankwo	2010-14
238	Kehinde Oyelola	2006-10
206	Ivana Seric	2007-11
194	Katie Piekieski	2006-10

Free-Throw Percentage

(min. 90 made)

.758	Taiwo Oyelola (244-322)	2006-10
.756	Jessica Gerald (450-595)	2007-11
.755	Jill Dickinson (105-139)	2006-09
.742	Jackie McCaffrey (98-132)	2007-09
.727	Rayven Johnson (317-436)	2009-12

Single Season Records

Points

539	Schrkya Massey	2001-02
509	Sharon Kukal	1997-98
493	Rayven Johnson	2012-13
482	Kelly Crowe	2004-05
446	Jessica Gerald	2009-10
439	SchrKya Massey	2002-03
413	Sharon Kukal	1998-99
409	Nevea Van Wright	1993-94
405	Kelly Crowe	2005-06
379	Nevea Van Wright	1992-93
375	Lindsey Reggo	2002-03

Scoring Average (min. 20 games)

21.2	Sharon Kukal (509/24 G)	1997-98
20.7	SchrKya Massey (539/26 G)	2001-02
19.5	Nevea Van Wright (409/21 G)	1994-95
17.2	Nevea Van Wright (379/22 G)	1993-94
16.7	Jessica Gerald (318/19 G)	2008-09

Rebounds

326	Rayven Johnson	2012-13
316	Dion McMillian	1986-87
314	Wendy Gruenewald	1992-93
309	Sharon Kukal	1998-99
284	Lauren Daley	1999-2000
270	Wendy Gruenewald	1994-95
256	Dion McMillian	1987-88
246	Wendy Gruenewald	1993-94
245	Uju Nwankwo	2013-14
241	Kristine Simpson	1994-95
236	Uju Nwankwo	2012-13
	Merna Maloon	1997-98
232	Rayven Johnson	2011-12
230	Wendy Gruenewald	1995-96

Rebound Average (min. 14 games)

16.6	Dion McMillian (316/19 G)	1986-87
15.1	Dion McMillian (256/17 G)	1987-88
14.3	Wendy Gruenewald (314/22 G)	1992-93
12.9	Wendy Gruenewald (246/19 G)	1993-94
11.7	Wendy Gruenewald (270/23 G)	1994-95

Assists (min. 100)

120	Nicole Ballou	2002-03
115	Alyssa Albanese	2013-14
113	SchrKya Massey	2001-02
111	Nancy Belbo	1993-94
110	Jackie McCaffrey	2004-05
102	Nicole Ballou	2001-02
101	Nicole Ballou	2000-01
100	SchrKya Massey	2002-03

Blocks (min. 40)

83	Nicole Maticka	2011-12
66	Liliana Alvarez	1992-93
61	Uju Nwankwo	2012-13
54	Nicole Maticka	2012-13
50	Uju Nwankwo	2011-12
49	Lauren Daley	1999-2000
45	Uju Nwankwo	2013-14

Steals (min. 70)

94	Kelly Crowe	2003-04
88	SchrKya Massey	2001-02
76	Nevea Van Wright	1993-94
72	SchrKya Massey	2002-03
71	Brenda Rodriguez	1994-95
70	Kelly Crowe	2004-05

Three-Point Field Goals

77	Denisa Domiterova	2011-12
68	Jackie O'Connor	2000-01
64	Jill Dickinson	2008-09
62	Jessica Gerald	2010-11
58	Jessica Gerald	2009-10
	Lindsey Reggo	2002-03
	Jackie O'Connor	1999-2000
57	Sarah Olson	2012-13
	Nevea Van Wright	1993-94
56	Jackie O'Connor	1998-99
47	Nicole Ballou	2001-02
45	Kelly Crowe	2004-05
	Jill Dickinson	2007-08

Games

31	Rayven Johnson	2012-13
	Sarah Olson	2012-13
	Uju Nwankwo	2012-13
	Melanie Griffin	2012-13
	Martina Matejcikova	2012-13
	Alyssa Albanese	2012-13
	Kimberly Dweck	2012-13
30	Nicole Maticka	2012-13
	Sarah Olson	2011-12
	Uju Nwankwo	2011-12
	Nicole Maticka	2011-12
	Kimberly Dweck	2011-12
	Melanie Griffin	2011-12
	Kelly Crowe	2004-05
	Selena Kershaw	2004-05
	Aine O'Dwyer	2004-05
	Jackie McCaffrey	2004-05
	Lisa Neria	2004-05
	Jackie Lupo	2004-05



Nicole Maticka

Field Goals

200	SchrKya Massey	2001-02
184	Sharon Kukal	1997-98
175	Rayven Johnson	2012-13
154	SchrKya Massey	2002-03

Field-Goal Attempts

506	SchrKya Massey	2001-02
455	Rayven Johnson	2012-13
446	SchrKya Massey	2002-03
414	Sharon Kukal	1997-98

Field-Goal Percentage (min. 2.5 made per game)

.586	Shakia Robinson (29G/146-249)	2013-14
.537	Emese Gyuricza (26 G/73-136)	2005-06
.480	Selena Kershaw (26 G/109-227)	2001-02
.476	Kristie Simpson (23 G/139-292)	1994-95

Three-Point Attempts

230	Jackie O'Connor	2000-01
205	Denisa Domiterova	2011-12
203	Jessica Gerald	2010-11
197	Jessica Gerald	2009-10
175	Lindsey Reggo	2002-03
173	Jackie O'Connor	1999-2000

Three-Point Percentage (min. 20 made)

.535	Veronica Mullen (23/43)	1999-2000
.393	Nevea Van Wright (57/145)	1993-94
.390	Sarah Olson (57/146)	2012-13
.385	Alana Dudley (30/78)	2013-14
.376	Denisa Domiterova (77/205)	2011-12
.371	Nicole Ballou (36/97)	1999-2000

Free-Throws Made

144	Jessica Gerald	2009-10
141	Kelly Crowe	2004-05
	Sharon Kukal	1997-98
138	SchrKya Massey	2001-02
137	Rayven Johnson	2012-13

Free-Throw Attempts

204	Sharon Kukal	1997-98
199	Kelly Crowe	2005-06
198	Jessica Gerald	2009-10
195	Kelly Crowe	2004-05
189	SchrKya Massey	2001-02
184	Rayven Johnson	2012-13

Free-Throw Percentage (min. 50 made)

.806	Jessica Gerald (100/124)	2010-11
.794	Jackie McCaffrey (50/63)	2007-08
.765	Taiwo Oyelola (78/102)	2008-09
.757	Jessica Gerald (106/140)	2007-08
.754	Taiwo Oyelola (52/69)	2007-08

Team Single Season Records

Most Games: 31, 2012-13

Most Wins: 18, 2004-05

Best Winning Percentage: .762, 1994-95 (16-5)

Most Consecutive Wins: 7, 1995-96

Most Points: 2,013, 2002-03

Highest Scoring Average: 67.9, 2001-02

Fewest Points Allowed: 1,054, 1987-88

Lowest Scoring Defense: 52.3, 1992-93

Highest Scoring Margin: +4.5, 2005-06

Most Rebounds: 1,251, 2002-03

Highest Rebound Average: 52.2, 1992-93

Highest Rebounding Margin: +9.3, 1994-95

Most Field Goals: 744, 2004-05

Most Field-Goal Attempts: 1855, 2002-03

Highest Field-Goal Percentage: .408, 2004-05

Most Three-Pointers: 184, 2011-12

Most Three-Point Attempts: 562, 2000-01

Highest Three-Point Percentage: .370, 1993-94

Most Free-Throws Made: 419, 2004-05

Most Free-Throw Attempts: 674, 2005-06

Highest Free-Throw Percentage: .709, 2006-07 (366-516)

Most Assists: 388, 2013-14

Most Steals: 337, 2004-05

Most Blocked Shots: 164, 2011-12

Most Turnovers Forced: 637, 2004-05

Division I Single Season Records

(competition began in 2006-07)

Points

493	Rayven Johnson	2012-13
446	Jessica Gerald	2009-10
368	Jessica Gerald	2007-08
335	Rayven Johnson	2011-12
330	Shakia Robinson	2013-14
318	Jessica Gerald	2008-09
285	Kehinde Oyelola	2008-09
279	Taiwo Oyelola	2009-10

Scoring Average (min. 20 games)

15.9	Rayven Johnson (31G/493pts)	2012-13
15.4	Jessica Gerald (29 G/446 pts)	2009-10
12.7	Jessica Gerald (29 G/368 pts)	2007-08
11.5	Rayven Johnson (29G/334pts)	2011-12
11.4	Shakia Robinson (29G/330pts)	2013-14
9.8	Kehinde Oyelola (29 G/285 pts)	2008-09
9.6	Taiwo Oyelola (29 G/279 pts)	2009-10

Note: Jessica Gerald averaged 16.7ppg in 19 games in 2008-09 before being injured)

Rebounds

326	Rayven Johnson	2012-13
236	Uju Nwankwo	2012-13
232	Rayven Johnson	2011-12
283	Uju Nwankwo	2011-12
245	Uju Nwankwo	2013-14
190	Shakia Robinson	2013-14
182	Taiwo Oyelola	2009-10
169	Ivana Seric	2009-10
164	Taiwo Oyelola	2008-09
162	Kehinde Oyelola	2008-09
158	Taiwo Oyelola	2007-08

Rebound Average (min. 20 games)

10.5	Rayven Johnson (31G/326 rebs)	2012-13
8.4	Uju Nwankwo (29G/245 rebs)	2013-14
8.0	Rayven Johnson (29G/232 rebs)	2011-12
7.6	Uju Nwankwo (31G/236 rebs)	2012-13
6.6	Shakia Robinson (29G/190 rebs)	2013-14
6.3	Taiwo Oyelola (29 G/182 rebs)	2009-10
6.1	Uju Nwankwo (30G/183 rebs)	2011-12
5.8	Ivana Seric (29 G/169 rebs)	2009-10
5.7	Taiwo Oyelola (29 G/165 rebs)	2008-09
5.6	Kehinde Oyelola (29 G/162 rebs)	2008-09
5.6	Taiwo Oyelola (28 G/158 rebs)	2007-08

Assists

115	Alyssa Albanese	2013-14
90	Ivana Seric	2009-10
77	Alyssa Albanese	2012-13
76	Jackie McCaffrey	2007-08
75	Melanie Griffin	2009-10
73	Kimberly Dweck	2012-13

71	Kimberly Dweck	2011-12
	Aine O'Dwyer	2006-07
70	Ivana Seric	2008-09

Blocks

83	Nicole Maticka	2011-12
61	Uju Nwankwo	2012-13
54	Nicole Maticka	2012-13
50	Uju Nwankwo	2011-12
45	Uju Nwankwo	2013-14
35	Martina Matejckikova	2013-14
26	Nicole Maticka	2013-14

Steals

61	Erika Velez	2007-08
52	Taiwo Oyelola	2009-10
50	Jackie McCaffrey	2008-09
49	Melanie Griffin	2009-10
48	Kelly Crowe	2006-07

Three-Point Field Goals

77	Denisa Domiterova (77-205)	2011-12
64	Jill Dickinson (64-169)	2008-09
58	Jessica Gerald (58-197)	2009-10
57	Sarah Olson (57-146)	2012-13
46	Sarah Olson (46-150)	2011-12
45	Jill Dickinson (45-154)	2007-08
40	Kehinde Oyelola (40-112)	2008-09
38	Jessica Gerald (38-144)	2007-08

Games Played

31	Rayven Johnson	2012-13
	Sarah Olson	2012-13
	Uju Nwankwo	2012-13
	Melanie Griffin	2012-13
	Martina Matejckikova	2012-13
	Alyssa Albanese	2012-13
	Kimberly Dweck	2012-13
30	Done by 6 different players	
29	Done 16 times, twice each by:	
	Jill Dickinson	(07-08; 08-09)
	Jackie McCaffrey	(07-08; 08-09)

Field Goals

175	Rayven Johnson	2012-13
146	Shakia Robinson	2013-14
127	Rayven Johnson	2011-12
122	Jessica Gerald	2009-10
112	Jessica Gerald	2007-08
99	Uju Nwankwo	2013-14
	Kehinde Oyelola	2008-09
97	Martina Matejckikova	2013-14
95	Taiwo Oyelola	2009-10
93	Denisa Domiterova	2011-12

92	Jessica Gerald	2008-09
----	----------------	---------

Field-Goal Attempts

455	Rayven Johnson	2012-13
376	Jessica Gerald	2009-10
330	Jessica Gerald	2007-08
325	Rayven Johnson	2011-12
274	Jessica Gerald	2008-09
	Kelly Crowe	2006-07
265	Denisa Domiterova	2011-12
259	Kehinde Oyelola	2008-09

Field-Goal Percentage (min. 2.5 made per game)

.586	Shakia Robinson (29 GP; 146-249)	2013-14
.497	Uju Nwankwo (30 GP; 91-183)	2011-12
.455	Ivana Seric * (15 GP; 45-99)	2007-08
.438	Nicole Maticka (30 GP; 81-185)	2011-12
.419	Ivana Seric (29 GP; 78-186)	2008-09

*--Seric entered NJIT in the 2nd semester of 2007-08

Three-Point Attempts

205	Denisa Domiterova	2011-12
169	Jill Dickinson	2008-09
154	Jill Dickinson	2007-08
150	Sarah Olson	2011-12
146	Sarah Olson	2012-13
144	Jessica Gerald	2007-08
116	Jessica Gerald	2008-09
112	Kehinde Oyelola	2008-09

Three-Point Percentage (min. 25 made and .300)

.425	Jackie McCaffrey (34-80)	2008-09
.390	Sarah Olson (57-146)	2012-13
.379	Jill Dickinson (64-169)	2008-09
.376	Denisa Domiterova (77-205)	2011-12
.357	Kehinde Oyelola (40-112)	2008-09
.329	Colleen Vogel (27-82)	2006-07

Free-Throws Made (min. 75)

144	Jessica Gerald (144-198)	2009-10
137	Rayven Johnson (137-184)	2012-13
106	Jessica Gerald (106-140)	2007-08
100	Jessica Gerald (100-133)	2008-09
78	Taiwo Oyelola (78-102)	2007-08
78	Kelly Crowe	2006-07

Free-Throw Attempts (min. 100 attempts)

184	Rayven Johnson (144-198)	2012-13
140	Jessica Gerald (106-140)	2007-08
133	Jessica Gerald (100-133)	2008-09
114	Uju Nwankwo (73-114)	2013-14
107	Kelly Crowe (78-107)	2006-07
105	Rayven Johnson (71-105)	2011-12
102	Taiwo Oyelola (78-102)	2008-09

Free-Throw Percentage (min. 50 made)

.794	Jackie McCaffrey (50-63)	2007-08
.765	Taiwo Oyelola (78-102)	2008-09
.757	Jessica Gerald (106-140)	2007-08
.754	Taiwo Oyelola (52-69)	2007-08
.745	Rayven Johnson (144-198)	2012-13
.744	Jill Dickinson (64-86)	2006-07

Division I Firsts (vs. Morgan State)

First basket: Aine O'Dwyer, layup (19:11)

First rebound: Ali Baumlin (17:25 first half, defensive)

First assist: Ali Baumlin (16:18 first half, assisted Kelly Crowe)

First steal: Kelly Crowe (19:40 first half)

First blocked shot: Lesley Hendricks (2:42 first half, blocked Dominisha Britton)

First three-point basket: Katie Piekelski (14:47 second half)

First lead: 2-1 (on O'Dwyer's layup 1:07 into the game)

First player to reach double-figure scoring: Katie Piekelski (jumper with 15:31 remaining)

First player to reach double-figure rebounding: Ali Baumlin (1:04 remaining)



Division I Superlatives

vs. Division I Opponents only

NJIT	TEAM	Opponents
91 vs. Norfolk State (11/18/06).....	Points	96, South Dakota State (2/8/07)]
34 vs. Fairleigh Dickinson (12/19/13).....	Field Goals Made	38, Utah Valley (2/28/09)
76 at Texas-Pan American (2/2/13).....	Field Goal Attempts	76, DePaul (1/20/11)
.569 (29-51) vs. Utah Valley (1/30/10)	Field Goal Percentage633 (38-60), Utah Valley (2/28/09)
17 (17-31) vs. Houston Baptist (1/15/11).....	3 pt. FG Made	14, Harvard (1/9/11)
43(10-43) vs. North Dakota (2/10/11).....	3 pt. FG Attempts	29, Lehigh (12/9/06) 29, Chicago State (1/26/08)
.733 (11-15) vs. Chicago State (3/2/13).....	3 pt. FG Percentage (min. 10 att.)688 (11-16), Navy (1/3/12)
37 vs. Norfolk State (11/18/06).....	Free Throws Made	35, Chicago State (2/8/08)
51 vs. Lafayette (12/28/06)	Free Throw Attempts	41, Chicago State (2/8/08)
1.000 (19-19) vs. St. Francis (11/20/12)	Free Throw Percentage(min. 10 att.)941 (16-17), FDU (1/15/09)
67 vs. Houston Baptist (2/16/13)	Rebounds	58, DePaul (1/20/11)
26 vs. Longwood (2/14/09).....	Assists	31, Utah Valley (2/28/09)
18, three different times	Steals	21, Texas-Pan American, (1/13/07) 21, Fairleigh Dickinson (12/12/06)
13 vs. Chicago State (3/3/12).....	Blocked Shots	11, Texas-Pan American (2/3/07) 11, Hofstra (12/29/08) 11, South Dakota (2/12/11)

INDIVIDUALS

NJIT	TEAM	Opponents
37, Jessica Gerald vs. CSU Bakersfield (1/11/08).....	Points	41, Robyn Fairbanks, Utah Valley (2/28/09)
13, Jessica Gerald vs. CSU Bakersfield (1/11/08).....	Field Goals Made	18, Robyn Fairbanks, Utah Valley (2/28/09)
27, Jessica Gerald at Chicago State (1/17/09).....	Field Goal Attempts	28, Crystal Smith, Longwood (1/14/12)
.833 (10-12) Shakia Robinson at Lehigh (11/11/13).....	FG Pct (min 10 att)800 (8-10), Chelsey Bunyer, Wagner (12/21/07)
9, Rayven Johnson vs. Houston Baptist (1/15/11).....	3 pt. FG Made	8, Takisha Cranberry, West Virginia (11/28/08)
15, Jill Dickinson at Monmouth (1/24/08).....	3 pt. FG Attempts	14, Courtney Waldon, Chicago State (1/26/08)
15, Jessica Gerald vs. North Dakota (3/9/11).....		14, Courtney Waldon, Chicago State (2/7/09)
15, Denisa Domiterova at Navy (1/3/12)		
.818 (9-11), Rayven Johnson vs. Houston Baptist (1/15/11)	3 pt. FG Pct (min 5 att.)	1.000 (6-6), Alexis Yackley, South Dakota (2/12/11)
14 (of 16), Jessica Gerald at Maine (11/29/08).....	Free Throws Made	17 (of 22), Becky Fernandes, Longwood (1/4/09)
14 (of 19), Rayven Johnson at Texas-Pan Am (2/2/13)		
19 (14-19), Rayven Johnson at Texas-Pan Am (2/2/13).....	Free Throw Attempts	22, Becky Fernandes, Longwood (1/4/09)
1.000 (10-10), Jessica Gerald vs. Savannah State (2/16/08) ..	FT Pct (min 10)	1.000 (10-10), Jasmin Dixon, Chicago State (2/8/08)
18, Rayven Johnson vs. Utah Valley (3/16/13).....	Rebounds	17, Elo Edeferioka, Hofstra (3/8/14) 17, Robyn Fairbanks, Utah Valley (2/21/08) 17, Caila Desroches, Chicago State (1/22/11)
10, Alyssa Albanese vs. UMass Lowell (3/4/14).....	Assists	13, Johnell Burts, Saint Peter's (11/14/07)
10, Alyssa Albanese vs. Fairleigh Dickinson (12/19/13)		
7, Kelly Crowe vs. Monmouth (1/23/07)	Steals	8, Alex Bentley, Penn State (12/23/12)
7, Taiwo Oyelola vs. Houston Baptist (2/18/10)		8, MaHogany Daniel, Texas-Pan American (2/3/07) 8, Ivy Smith, Savannah State (2/25/08)
9, Nicole Maticka vs. Colgate (2/5/13)	Blocked Shots	10, Ali Ridge, Wagner (1/18/07)
9, Nicole Maticka vs. Longwood (2/26/12)		

Year-by-Year

NOTE: the NCAA recognizes only games against varsity teams from 4-year degree granting institutions as official contests; games against JV teams, club teams and others are listed for the historical record, but are not included in official won-lost records.

1986-87 (0-15)

11/22	at Drew	L	32-65
11/23	vs. Johns Hopkins	L	37-80
12/2	ST. ELIZABETH	L	40-73
12/4	at Upsala	L	47-57
12/10	at FDU-Madison	L	21-86
12/12	at St. Thomas Aquinas	L	24-76
12/13	vs. Old Westbury	L	36-71
12/18	OLD WESTBURY	L	51-64
1/7	at William Paterson	L	24-73
1/30	Bloomfield	L	48-66
1/27	at Old Westbury	L	23-75
	at Georgian Court	L	18-81
2/3	RUTGERS-NEWARK	L	36-103
2/9	DOMINICAN (NY)	L	47-76
2/11	at St. Elizabeth	L	45-71

WIAC (0-3)

Coach: John Speiss

1987-88 (2-11)

	Greensboro	L	33-62
	St. Elizabeth	L	32-53
	Bloomfield	L	29-85
	FDU-Madison	L	31-70
	Vassar	L	52-54
	Upsala	L	56-79
	Nazareth	L	43-103
	Notre Dame College	L	36-52
1/30	at Caldwell	L	70-81
	Drew	L	34-53
2/10	NY MARITIME	W	47-31
	Bloomfield	L	37-85
	VASSAR	W	62-59

Coach: Dave DeNure

1988-89

No Team

1989-90 (0-12)

1/8	at FDU-Madison		
1/13	FDU-MADISON		
1/20	at Mt. St. Vincent		
1/23	at MT. ST. MARY (NY)		
1/27	ST. ELIZABETH		
1/29	at Bloomfield		
2/5	at Caldwell		
2/7	at Drew		
2/8	BLOOMFIELD		
2/16	at Mt. St. Mary (NY)		
2/17	at Upsala		
2/20	at St. Elizabeth		

Coach: Bill Avant

1990-91 (3-17)

Yeshiva	W	40-23
Mt. St. Vincent	L	24-68
St. Elizabeth	L	25-68
Drew	L	17-55
Caldwell	L	20-77
Centenary (NJ)	L	33-66
FDU-Madison	L	30-64
Mt. St. Mary (NY)	L	22-65
Upsala	L	24-70
Hunter	L	27-77
Caldwell	L	21-74
NY Maritime	W	39-24
St. Elizabeth	L	20-67
Mt. St. Mary (NY)	L	28-76
NY Maritime	L	61-69
FDU-Madison	L	38-71
Upsala	L	43-90
Yeshiva	W	54-32
Centenary	L	40-60

Coach: Brenda Zabriskie

1991-92 (8-14)

11/22	vs. Medgar Evers	W	39-37
11/23	vs. Mt. St. Vincent	L	39-64
11/26	MT. ST. VINCENT	L	27-38
12/5	ST. ELIZABETH*	L	52-86
12/9	at FDU-Madison*	L	35-83
12/11	YESHIVA	W	63-24
12/12	HUNTER	L	53-76
1/13	MT. ST. MARY (NY)*	L	54-79
1/22	N.Y. MARITIME	W	80-18
1/24	at St. Elizabeth*	L	59-71
1/30	NEW ROCHELLE	W	71-40
1/31	YORK (NY)	W	62-51
2/3	UPSALA*	L	62-95
2/4	FDU-MADISON*	L	38-72
2/10	at York (NY)	W	67-58
2/13	at Upsala*	L	54-84
2/15	CENTENARY	L	64-66
2/17	at Yeshiva	W	69-35
2/19	Centenary (NJ) *	L	55-81
2/22	at Drew	L	50-66
	at NY Maritime	W	53-25
2/26	at Mt. St. Mary (NY) *	L	35-64

* WIAC (0-8)

Coach: Brenda Zabriskie

1992-93 (8-14)

11/21	YORK (NY)	W	52-50
11/24	at Upsala*	L	49-81
11/30	OLD WESTBURY	L	56-65
12/3	ST. ELIZABETH*	L	43-53
12/5	DREW	L	59-67
12/7	FDU-MADISON*	L	46-71
12/8	at New Rochelle	W	79-37
1/11	CCNY	W	62-43
1/13	at York (NY)	L	37-39
1/16	MT. ST. VINCENT**	W	71-45



Camerin Spahn

1/18	at Centenary (NJ) *	L	52-74
1/22	at St. Elizabeth*	L	57-64
1/23	at Mt. St. Mary (NY)*	L	41-67
1/26	at Stevens Tech**	W	57-28
1/30	at NY Maritime**	W	64-16
2/1	UPSALA*	L	57-62
2/2	at FDU-Madison*	L	45-77
2/9	STEVENS TECH**	W	71-25
2/6	at Mt. St. Vincent**	L	37-39
2/15	at Yeshiva**	W	62-17
2/17	CENTENARY*	L	38-65
2/23	MT. ST. MARY (NY) *	L	47-63

* WIAC (0-10)

** IAC (5-1)

Coach: Brenda Zabriskie

1993-94 (13-8)

11/23	UPSALA*	L	51-93
11/29	DREW	W	63-62
12/1	at St. Elizabeth*	L	53-59
12/4	at Mt. St. Mary (NY)*	L	58-76
12/6	at FDU-Madison*	L	48-60
12/10	vs. Medgar Evers	W	68-48
12/11	vs. Baruch	W	62-54
1/10	at CCNY	W	53-52
1/15	MT. ST. VINCENT	W	58-56
1/22	at Staten Island	W	67-55
1/25	BARUCH	W	57-53
1/27	FDU-MADISON*	L	57-68
1/29	ST. ELIZABETH*	W	65-56
2/7	CENTENARY (NJ)*	W	84-59
2/14	at Upsala*	L	53-71

Year-by-Year

2/16	at Medgar Evers	L	73-86
2/19	NY MARITIME	W	40-12
2/22	at Manhattanville	L	45-48
2/25	NY MARITIME+	W	67-12
2/26	MT. ST. VINCENT+	W	60-49
2/28	at Centenary (NJ)*	W	61-36

* WIAC (3-6)

+ IAC Tournament

Coach: Brenda Zabriskie-DeNure

1994-95 (12-11)

11/22	at Drew	W	59-58
11/30	ST. ELIZABETH*	L	48-53
12/7	STATEN ISLAND	L	68-72
1/5	at Warner Southern	L	48-65
1/6	vs. Bethel	L	55-77
1/7	vs. Houten	L	39-58
1/9	CCNY	W	68-66
1/11	at York (NY)	L	33-34
1/14	at Mt. St. Vincent*	L	52-53
1/16	at Centenary (NJ) *	W	69-57
1/18	at St. Elizabeth*	L ot	69-73
1/21	BARUCH	W	54-45
1/24	ST. JOSEPH'S (NY)	W	74-29
1/26	FDU-MADISON*	L	40-69
1/28	OLD WESTBURY	W	68-37
2/2	at Richard Stockton	L	46-65
2/6	CENTENARY (NJ) *	W	62-59
2/8	MT. ST. MARY (NY) *	L	57-75
2/10	at Lehman	W	89-42
2/15	MEDGAR EVERS	W	76-63
2/20	MANHATTANVILLE	W	70-50
2/23	vs. Yeshiva +	W	77-26
2/26	vs. Mt. St. Vincent+	W	53-46

* WIAC (2-5)

+ IAC Tournament

Coach: Brenda Zabriskie-DeNure

1995-96 (16-5)

11/21	DREW	L	62-71
11/29	at St. Elizabeth	W	63-36
12/2	vs CCNY	W	57-55
12/3	at Manhattanville	L	55-61
12/5	MT. ST. VINCENT	W	82-48
12/7	at Staten Island	W	52-45
1/6	STOCKTON	L	50-57
1/10	at York (NY)	W	80-37
1/13	at Mt. St. Vincent	W	70-52
1/15	at Centenary (NJ)	W	73-66
1/25	at FDU-Madison	L	43-49
1/30	ST. ELIZABETH	W	59-42
2/5	CENTENARY (NJ)	W	76-72
2/7	at Mt. St. Mary (NY)	L	41-59
2/9	HUNTER	W	62-42
2/12	at Baruch	W	91-37
2/14	NY MARITIME	W	88-15
2/18	at Bard	W	74-35
2/19	ST. JOSEPH'S (NY)	W	73-24
2/24	YESHIVA	W	92-12
2/25	MT. ST. VINCENT	W	60-43

* WIAC (4-1)

Coach: Maureen O'Neil

1996-97 (7-15)

11/22	at Rutgers-Newark	L	33-74
11/23	vs. Manhattanville	L	36-68
12/2	GEORGIAN COURT	L	21-74
12/4	at Mt. St. Vincent	W	60-50
12/5	at Montclair State	L	38-85
12/7	vs. John Jay	W	53-49
12/11	ST. JOSEPH'S (NY)*	W	75-53
1/7	at Richard Stockton	L	42-84
1/13	at Centenary (NJ) *	L	56-75
1/15	at York (NY)	W	58-34
1/21	QUEENS (NY)	L	46-70
1/23	MT. ST. VINCENT	L	43-65
1/27	ST. JOSEPH'S(Bkln)*	W	73-55
1/30	FDU-MADISON	L	47-64
2/1	at Caldwell	L	
2/3	at CENTENARY (NJ) *	L	51-82
2/5	ST. ELIZABETH	W	52-42
2/7	STATEN ISLAND	L	51-62
2/13	BARD	W	58-46
2/17	ST. JOSEPH'S (NY)*	L	52-53
2/20	at St. Elizabeth*	L	39-65
2/22	at Mt. St. Mary (NY)	L	44-81

* WIAC (3-4)

Coach: Bill McColl

1997-98 (5-21)

First year Division II

11/15	at St. Rose*	L	27-122
11/17	CALDWELL	L	60-77
11/23	at Bridgeport	L	44-81
11/28	vs. Bloomfield	W	59-53
11/29	at Molloy*	L	54-63
12/3	DOWLING*	L	65-76
12/6	at Mercy*	L	67-76
12/8	at Concordia (NY)*	L	65-77
12/10	at Adelphi*	L	52-76
12/13	SOUTHAMPTON*	L	56-87
1/5	at Dist. Of Columbia	L	50-59
1/7	CW POST*	L	47-70
1/10	at Dowling*	L	57-88
1/14	QUEENS (NY)*	W	50-48
1/17	PHILADELPHIA TEXTILE*	L	64-93
1/19	at C.W. Post*	L	45-63
1/21	at Molloy*	L	38-61
1/24	MERCY*	L	59-67
1/28	at Queens (NY)*	W	66-57
1/31	MOLLOY	L	53-66
2/4	at Philadelphia Textile*	L	54-83
2/7	CONCORDIA (NY)*	W	70-65
2/11	at Southampton*	L	52-79
2/14	DIST. OF COLUMBIA	W	62-51
2/18	ADELPHI*	L	48-59
2/21	ST. ROSE*	L	30-63

* New York Collegiate Athletic Conference (3-17)

Coach: Kim Barnes Arico

1998-99 (11-16)

11/27	at District of Columbia	L	75-87
11/28	vs. Elizabeth City	L	55-80
12/2	ADELPHI*	L	65-69
12/5	MOLLOY*	W	62-56
12/9	at Philadelphia Textile*	L	49-86
12/12	ST. ROSE*	L	64-98
1/2	DOWLING*	L	62-75
1/4	CONCORDIA (NY)*	L	56-66
1/6	at Southampton*	L	48-72
1/9	at New York Tech*	W	55-42
1/13	QUEENS (NY)*	W	68-44
1/16	at Mercy*	W	54-47
1/18	CW POST*	W 3ot	62-59
1/20	at Adelphi*	L ot	56-58
1/23	at St. Augustine	L	43-74
1/25	at Molloy*	W	65-57
1/27	PHILADELPHIA TEXTILE*	L	45-71
1/30	at St. Rose*	L	40-81
2/1	DOWLING*	W	65-61
2/3	at Concordia (NY)*	W	61-50
2/6	SOUTHAMPTON*	L	52-63
2/7	DIST. OF COLUMBIA	L	55-57
2/10	NEW YORK TECH*	W	75-32
2/13	at Queens (NY)*	W	53-49
2/17	MERCY*	W	54-41
2/20	at C.W. Post*	L	51-59
2/23	at Southampton+	L	51-74

* New York Collegiate Athletic Conference (9-12)



Olivia Dudley

+ NYCAC Tournament

Coach: Kim Barnes Arico

1999-2000 (11-16)

11/20	at College of New Jersey	L	53-77
11/21	vs. Lehman	W	74-56
11/23	ST. PAUL'S	L ot	62-66
12/1	ADELPHI*	L	58-75
12/4	at New York Tech*	W	74-61
12/8	PHILADELPHIA*	L	69-78
12/11	at Queens (NY)*	W	72-59
12/19	ST. ROSE*	L	51-87
1/5	MOLLOY*	L	61-68
1/8	at Mercy*	L	46-77
1/12	DOWLING*	W	57-49
1/15	at C.W. Post*	L	64-75
1/17	CONCORDIA (NY)*	W	85-59
1/19	at Adelphi*	L	56-78
1/22	NEW YORK TECH*	W	77-51
1/26	at Philadelphia*	L	52-81
1/29	QUEENS (NY)*	W	64-54
2/2	SOUTHAMPTON*	L	58-80
2/5	at Molloy*	W	72-70
2/9	MERCY*	L	52-64
2/12	at Dowling*	W	72-52
2/16	C.W. POST*	W	64-51
2/18	ST. AUGUSTINE	L	56-58
2/20	at Concordia (NY)*	W	72-65
2/23	at Southampton*	L	53-79
2/26	at St. Rose*	L	42-94
2/29	at Philadelphia+	L	65-80

* New York Collegiate Athletic Conference (10-12)

+ NYCAC Tournament

Coach: Sharon Manning Beverly

2000-01 (4-23)

11/21	DOMINICAN (NY)*	L	44-67
11/27	KUTZTOWN	L	63-85
11/29	at Goldey-Beacom*	W	73-52
12/2	at USP*	L	46-61
12/4	SOUTHAMPTON	L	51-74
12/6	at Nyack*	L	49-67
12/9	at Wilmington (DE)*	L	52-74
12/15	HOLY FAMILY*	L	30-72
12/19	BLOOMFIELD*	L	48-65
1/2	at Eckerd	L	52-84
1/3	at St. Leo	L	49-80
1/9	GEORGIAN COURT*	L	53-65
1/11	at Teikyo Post*	L	67-78
1/13	at Felician*	L	54-74
1/17	at Dominican (NY)*	L	42-79
1/20	at Bloomfield*	L	58-62
1/27	USP*	L	56-79
1/30	CALDWELL*	L	56-78
2/1	at Georgian Court*	L	66-68
2/3	GOLDEY-BEACOM*	W	57-56
2/6	TEIKYO POST*	W	62-60
2/7	NYACK*	L	68-83
2/10	FELICIAN*	L	58-73
2/12	at Caldwell*	L	52-72

2/14	WILMINGTON (DE)*	W	62-47
2/17	at Holy Family*	L	55-72
2/21	at New Haven	L	63-90

* Central Atlantic Collegiate Conference (4-18)

Coach: Sharon Manning Beverly

2001-02 (15-12)

11/17	vs. Lynn	L	53-59
11/18	vs. Mercy	W	73-68
11/20	at Southampton	L	60-95
11/27	NYACK*	W	77-63
12/1	at Wilmington (DE)*	W	71-43
12/5	DOMINICAN (NY)*	L	65-78
12/8	at Felician*	L	69-77
12/10	at Caldwell*	L	60-80
12/15	GEORGIAN COURT*	W	64-51
12/22	USP*	W	64-51
1/3	TEIKYO POST*	W	79-49
1/5	at Holy Family*	L	44-65
1/8	at Bloomfield*	L	62-75
1/10	at Dominican (NY)*	W	72-65
1/15	FELICIAN*	W	76-73
1/19	at Goldey-Beacom*	W	63-42
1/23	at Nyack*	W	91-84
1/26	CALDWELL*	W ot	74-70
2/2	HOLY FAMILY*	L	53-71
2/5	at Teikyo Post*	W	88-58
2/7	at Georgian Court*	W	76-53
2/9	GOLDEY-BEACOM*	W	76-45
2/12	at USP*	L	60-79
2/14	BLOOMFIELD*	L	62-67
2/16	WILMINGTON (DE)*	W	83-54
2/18	at Kutztown	L	59-69
2/23	NEW HAVEN	L	53-72

* Central Atlantic Collegiate Conference (14-8, 4th/12)

Coach: Sharon Manning Beverly

2002-03 (16-12)

11/22	vs. Stonehill	L	64-80
11/23	vs. La Roche	W	85-52
11/26	NYACK*	W	63-56
12/1	KUTZTOWN	L	67-70
12/4	at Wilmington (DE)*	W	64-39
12/7	at Dominican (NY)*	W	77-69
12/10	at Goldey-Beacom*	W	67-35
12/14	at Felician*	W	76-67
12/21	at Georgian Court*	L	51-67
12/30	at Eckerd	L	56-66
1/2	at St. Leo	L	40-96
1/5	USP*	W	81-51
1/7	at Caldwell*	L	57-68
1/9	TEIKYO POST*	W	74-38
1/14	at Bloomfield*	L	64-65
1/16	DOMINICAN (NY)*	W	60-56
1/18	at Holy Family*	L	69-79
1/21	FELICIAN*	W	82-77
1/25	GOLDEY-BEACOM*	W	73-60
1/28	at Nyack*	W	69-61
2/1	CALDWELL*	W	53-51
2/5	at Teikyo Post*	L	59-65

2/8	HOLY FAMILY*	L	50-61
2/11	at USP*	L	55-58
2/15	BLOOMFIELD*	W	59-56
2/19	GEORGIAN COURT*	W	77-54
2/22	WILMINGTON (DE)*	W	72-50
2/26	at Caldwell+	L	63-64

* Central Atlantic Collegiate Conference (15-7, 4th/12)

+ CACC Tournament

Coach: Kim Bowen

2003-04 (12-16)

11/21	at Assumption	L	43-66
11/22	vs. Stonehill	L	56-73
11/25	at Nyack*	W	79-61
12/3	WILMINGTON (DE)*	W	62-50
12/9	at Felician*	L	52-56
12/12	at American International	L	52-86
12/13	vs. Southern Connecticut	L	33-67
12/20	GEORGIAN COURT*	W	68-49
12/30	at Kutztown	W	67-59
1/5	CALDWELL*	L	68-71
1/8	TEIKYO POST*	L	56-68
1/13	BLOOMFIELD*	W	73-64
1/15	at Dominican (NY)*	L	58-73
1/17	at Holy Family*	L	58-93
1/24	at Goldey-Beacom*	W	67-60
1/27	NYACK*	W	68-52
1/29	at USP*	L	61-65
1/31	at Caldwell*	W ot	91-89
2/2	DOMINICAN (NY)*	L	61-67
2/4	at Teikyo Post*	W 2 ot	97-94
2/7	HOLY FAMILY*	L	52-84
2/10	USP*	L	71-74
2/14	at Bloomfield*	L	73-75
2/18	at Georgian Court*	L	75-76
2/21	at Wilmington (DE)*	W	54-45
2/24	FELICIAN*	W	78-40
2/26	GOLDEY-BEACOM*	W	68-43
3/2	at USP+	L	52-92

* Central Atlantic Collegiate Conference (11-11, T-6th/12)

+ CACC Tournament

Coach: Kim Bowen Lusk

2004-05 (18-12)

11/15	ASSUMPTION	L	48-54
11/19	vs. East Stroudsburg^	W	66-55
11/20	at Kutztown^	L ot	68-69
11/30	at Felician*	W	65-55
12/2	GOLDEY-BEACOM*	W	98-72
12/4	HOLY FAMILY*	L	53-73
12/7	at Post (CT)*	W	62-49
12/11	at USP*	L	55-70
12/29	at Bryant#	L	59-70
12/30	vs. American International	L	58-77
1/5	WILMINGTON (DE)*	L	72-74
1/11	at Caldwell*	W	70-52
1/15	at Bloomfield *	L	68-84
1/18	DOMINICAN (NY)*	W	47-35
1/20	at Nyack*	W	73-46
1/25	FELICIAN*	W	62-56

Year-by-Year

1/27	at Goldey-Beacom*	W	83-54
1/29	at Holy Family *	L	59-77
2/1	POST (CT)*	W	77-49
2/5	USP*	W	61-44
2/8	GEORGIAN COURT*	W	71-63
2/12	at Wilmington (DE)*	L	69-78
2/15	CALDWELL*	W	77-56
2/19	BLOOMFIELD*	W	73-55
2/22	at Dominican (NY)*	W	68-64
2/25	NYACK*	W	73-40
2/26	at Georgian Court*	W	82-52
3/2	DOMINICAN (NY) \$	W	67-45
3/4	vs. Holy Family \$	L	73-84
3/11	at Philadelphia U. !	L	56-63

*Central Atlantic Collegiate Conference (16-6, 4th/12)

^Kutztown University Classic

#Comfort Suites Holiday Classic

\$CACC Tournament

!ECAC Tournament at Philadelphia (1st postseason appearance in program history)

Coach: Kim Bowen Lusk

2005-06 (17-10)

11/22	KUTZTOWN	W	49-40
11/29	CALDWELL*	W	61-57
12/1	HOLY FAMILY*	L	46-58
12/3	at Goldey-Beacom*	W	76-69
12/6	at Bloomfield*	L	59-67
12/10	NYACK*	W	66-35
12/12	at Georgian Court*	W	74-57
12/28	vs. Nebraska-Kearney^	L	50-76
12/29	vs. Virginia-Wise^	W	79-63
1/7	at USP*	L	53-55
1/10	WILMINGTON (DE) *	W	70-46
1/12	FELICIAN*	W	51-33
1/19	at Post (CT)*	W	79-66
1/21	DOMINICAN (NY)*	L	60-65
1/24	at Wilmington (DE)*	W	55-53
1/26	BLOOMFIELD*	L	60-67
1/28	GOLDEY-BEACOM*	W	68-55
1/31	at Nyack*	W	64-49
2/2	USP*	L	56-59
2/4	at Felician*	W	71-66
2/7	at Dominican (NY)*	W	77-72
2/11	PHILADELPHIA*	L	61-72
2/14	at Holy Family*	L	56-68
2/18	at Caldwell*	L	45-52
2/21	GEORGIAN COURT*	W	76-58
2/25	POST (CT) *	W	76-52

*CACC (15-9, 6th/13)

^South Padre Island Shootout

Coach: Kim Bowen Lusk

2006-07 (4-24)

First year Division I

11/13	MORGAN STATE	L	55-63
11/17	vs. North Florida ^	L	46-52
11/18	vs. Norfolk State ^	W	91-70
11/21	WILMINGTON (DE)	W	86-54
11/26	at UMBC	L	51-78

11/28	SAINT PETER'S	L	61-67
12/2	at Winston-Salem State	L	41-72
12/6	at Princeton	L	51-75
12/9	LEHIGH	L	44-70
12/12	at Fairleigh Dickinson	L	69-78
12/22	ST. FRANCIS (NY)	L	36-59
12/28	at Lafayette	W	70-59
1/4	at Cornell	L	42-65
1/6	at Long Island	L	51-60
1/11	at Texas A&M Kingsville	L	57-66
1/13	at Texas-Pan American	L	44-55
1/18	at Wagner	L	41-61
1/23	MONMOUTH	L	54-58
1/27	IPFW	L	70-81
2/1	UTAH VALLEY STATE	L	48-79
2/3	TEXAS-PAN AMERICAN	L	57-70
2/8	at South Dakota State	L	30-96
2/10	at North Dakota State	L	49-81
2/17	LONGWOOD	W	50-38
2/20	at IPFW	L	43-58
2/24	at Utah Valley State	L	40-71
3/1	NORTH DAKOTA STATE	L	54-73
3/3	SOUTH DAKOTA STATE	L	47-72

^Longwood Tournament

Coach: Kim Bowen Lusk

2007-08 (10-19)

11/11	at St. Francis (NY)	L	54-58
11/14	at Saint Peter's	L	52-68
11/28	UMBC	W	58-44
12/1	LAFAYETTE	L	53-61
12/5	PRINCETON	L	45-56
12/8	at Lehigh	L	58-73
12/12	LONG ISLAND	L	63-67
12/21	WAGNER	W	55-54
12/28	at Saint Joseph's (PA) +	L	59-68
12/29	vs. Davidson +	L	48-55
1/3	COLUMBIA	L	48-65
1/8	at Texas-Pan American	W	67-61
1/11	vs. Cal State-Bakersfield	W	76-61
1/15	CORNELL	L	60-75
1/19	LONGWOOD	L	55-62
1/24	at Monmouth	L	62-79
1/26	CHICAGO STATE	W	66-57
1/28	TEXAS-PAN AMERICAN	W	65-56
2/7	at Utah Valley	L	69-78
2/9	at Chicago State	L	60-80
2/14	MORGAN STATE	L	45-59
2/16	UTAH VALLEY	W	82-72
2/25	at Savannah State	L	58-65
3/2	at Longwood	L	49-60
3/6	vs. Florida Gulf Coast^	L	63-75
3/7	at Texas-Pan American^	W	59-49
3/8	vs. Utah Valley^	W	77-72

+ Saint Joseph's (PA) Hilton Philadelphia Hawk Classic

^ National Division I Independent Tournament

Coach: Margaret McKeon

2008-09 (8-21)

11/14	AMERICAN	L	63-70
-------	----------	---	-------

11/18	at Wagner	L	73-82
11/25	at Fordham	L	45-57
11/28	vs. West Virginia +	L	42-76
11/29	at Maine +	W	68-60
12/5	at Lafayette	L	49-70
12/9	at Albany (NY)	W	58-47
12/18	LEHIGH	L	54-65
12/29	vs. Hofstra #	L	54-65
12/30	vs. William & Mary #	L	46-58
1/4	at Longwood	L	80-84
1/7	at UMass	L	50-63
1/9	at Yale	L	66-74
1/11	at Savannah State	W	65-56
1/15	at Fairleigh Dickinson	W	79-69
1/17	at Chicago State	L	60-71
1/21	at Boston College	L	50-78
1/24	TEXAS-PAN AMERICAN	W	69-54
1/28	at Bryant	L	62-66
2/7	CHICAGO STATE	L	64-66
2/12	UTAH VALLEY	L	58-70
2/14	LONGWOOD	W	83-67
2/18	BRYANT	L	47-48
2/21	at Texas-Pan American	L	56-68
2/24	SAVANNAH STATE	W	68-41
2/28	at Utah Valley	L	86-94
3/5	at Utah Valley^	L	66-75
3/6	vs. Savannah State^	L	56-64
3/7	vs. Texas-Pan American^	W	49-45

+ Dead River Company Classic, hosted by Maine

Saint Peter's Holiday Classic, hosted by Saint Peter's

^ National Division I Independent Tournament

Coach: Margaret McKeon

2009-10 (11-18)

11/15	at Penn State	L	57-79
11/17	WAGNER	W	68-56
11/19	ALBANY	L	49-52
11/21	MAINE	W	63-50
11/24	at American	L	57-65
11/27	at Rhode Island	L	47-51
12/3	at Marquette	L	41-81
12/9	COLGATE	W	52-41
12/18	at Lehigh	L	38-64
12/20	UMASS	L	59-70
12/29	at Virginia Tech #	L	51-67
12/30	vs. Central Conn. State#	W	69-66
1/4	FAIRLEIGH DICKINSON	W	69-61
1/9	YALE	L	58-68
1/12	HARVARD	L	53-69
1/14	at Texas-Pan American*	L	54-62
1/16	at Houston Baptist*	W	83-70
1/23	CHICAGO STATE*	W	60-56
1/30	UTAH VALLEY*	W	79-69
2/6	at Savannah State	L	51-54
2/18	HOUSTON BAPTIST*	W	72-46
2/20	TEXAS-PAN AMERICAN*	W	70-66
2/23	at North Dakota*	L	44-69
2/25	SOUTH DAKOTA*	W	55-53
2/28	NORTH DAKOTA*	L	49-59
3/4	at Utah Valley*	L	61-70

3/6	at Chicago State*	L	51-69
3/7	at South Dakota*	L	48-59
3/11	vs. South Dakota^	L	49-57

*Great West Conference games (6-6, t-4th/7)

^ Great West Conference Tournament

Hilton Garden Classic, hosted by Virginia Tech

Coach: Margaret McKeon

2010-11(7-21)

11/14	NAVY	L	55-72
11/17	at Colgate	L	58-85
11/20	RHODE ISLAND	L	51-57
11/24	DELAWARE STATE	L ot	74-82
11/27	PENN	W	74-63
12/1	at Manhattan	L	48-62
12/7	at Wagner	L	55-71
12/9	LEHIGH	L	45-53
12/19	at Missouri	L	37-72
12/22	HOWARD	W	60-57
1/3	at Fairleigh Dickinson	L	41-59
1/6	at Brown	W	63-61
1/9	at Harvard	L	64-76
1/12	TEXAS-PAN AMERICAN*	W	68-60
1/15	HOUSTON BAPTIST*	W	82-55
1/20	at DePaul	L	43-90
1/22	at Chicago State*	L	42-83
1/29	at Utah Valley*	W	52-52
2/3	SAVANNAH STATE	W	59-49
2/10	NORTH DAKOTA*	L	51-67
2/12	SOUTH DAKOTA*	L	40-76
2/17	at Houston Baptist*	L	66-71
2/19	at Texas-Pan American*	L	53-72
2/24	at South Dakota*	L	28-72
2/26	at North Dakota*	L	37-58
3/3	UTAH VALLEY*	L	50-67
3/5	CHICAGO STATE*	L	43-66
3/9	vs. North Dakota ^	L	56-83

* Great West Conference games (3-9, 6th/7)

^ Great West Conference Tournament

Coach: Margaret McKeon

2011-12 (13-17)

11/13	BROWN	W	70-66
11/16	FAIRLEIGH DICKINSON	L	57-68
11/19	WAGNER	W	68-65
11/23	at Delaware State	W	65-49
11/27	MANHATTAN	L	66-75
12/3	BUCKNELL	W	54-53
12/7	at Lehigh	L	37-61
12/11	RIDER	L	50-60
12/18	COLGATE	L	44-54
12/21	SAINT PETER'S	W (ot)	66-59
12/29	vs. Buffalo\$	L	53-66
12/30	vs. New Hampshire \$	L	71-79
1/3	at Navy	L	51-67
1/5	at Howard	L	31-58
1/11	at Penn	W	52-48
1/14	at Longwood	L	71-72
1/19	at Houston Baptist*	W	69-52
1/21	at Texas-Pan American*	W	41-40



Nicole Maticka

1/26	NORTH DAKOTA*	L	55-65
1/28	UTAH VALLEY*	L	54-61
2/4	at Chicago State*	L	70-86
2/9	at Utah Valley*	W	48-46
2/11	at North Dakota*	L	42-68
2/16	TEXAS-PAN AMERICAN*	W	61-52
2/18	HOUSTON BAPTIST*	W	88-28
2/26	LONGWOOD	L	66-69
3/3	CHICAGO STATE*	W	69-49
3/8	vs. Houston Baptist^	W	61-42
3/9	vs. Utah Valley^	L	52-63

* Great West Conference games (6-4, 3rd/6)

^ Great West Conference Tournament

\$ Cyclone Challenge (at Iowa State)

Coach: Margaret McKeon

2012-13 (16-15)

11/9	at Seton Hall	L	66-69
11/12	at Rider	W	53-51
11/15	CENTENARY (NJ)	W	72-37
11/18	RUTGERS-NEWARK	W	90-31
11/20	ST. FRANCIS (Brooklyn)	W	73-61
11/25	STONY BROOK	L	34-59
11/28	at UAlbany	L	41-76
12/1	NORTHEASTERN	L	45-59
12/5	at Fairleigh Dickinson	L	58-67
12/8	DELAWARE STATE	W	55-42
12/11	at Saint Peter's	W	62-35
12/21	at VCU	L	52-64
12/23	at Penn State	L	37-82
12/28	at St. John's	L	37-55

12/30	RHODE ISLAND	W	48-44
1/3	at Colgate	L	36-72
1/5	LEHIGH	L	45-46
1/8	at Bucknell	L	35-52
1/12	TEXAS-PAN AMERICAN*	W	60-55
1/15	at Brown	L	51-53
1/19	at Chicago State*	L	57-58
1/24	HOWARD	L	33-46
1/26	UTAH VALLEY*	W	49-46
2/2	at Texas-Pan American*	W ot	81-75
2/5	COLGATE	W	53-51
2/9	at Utah Valley*	L	47-64
2/16	HOUSTON BAPTIST*	W	77-48
3/2	CHICAGO STATE*	W	59-33
3/9	at Houston Baptist*	W	65-49
3/15	vs. #3 Chicago State^	W	52-42
3/16	vs. #1 Utah Valley^	W	52-42

* Great West Conference games (6-2; 2nd out of 5 teams)

^ Great West Conference Tournament

NJIT wins Great West Conference Tournament; First women's basketball championship at any level (NCAA Division I, Division II, or Division III, the first season of which was 1986-87).

Coach: Steve Lanpher

2013-14 (8-21)

11/8	at Stony Brook	L	44-50
11/11	at Lehigh	L	72-77
11/13	NEW HAMPSHIRE	L	40-53
11/17	at Howard	L	73-80
11/20	at LIU Brooklyn	W	60-58
11/23	at Northeastern	L	55-79
11/26	St. Francis Brooklyn	L	53-58
11/30	BUCKNELL	W	61-59
12/2	at South Dakota State	L	46-71
12/5	LAFAYETTE	L	45-61
12/7	at Rhode Island	L	42-57
12/10	UALBANY	L	64-75
12/19	FAIRLEIGH DICKINSON	W	84-71
12/21	at Seton Hall	L	48-74
12/28	VCU	L	72-77
12/30	WAGNER	W	58-52
1/2	CLEMSON	L	37-84
1/5	MARSHALL	L	56-57
1/7	at Delaware State	L ot	72-75
1/11	BROWN	W	48-43
1/15	HARVARD	L	56-75
1/18	DARTMOUTH	L	45-48
1/25	at Penn	L	48-84
1/29	at Maryland Eastern Shore	L	61-68
2/3	at Southern Ill.-Edwardsville	L	54-59
2/17	RUTGERS-NEWARK	W	71-42
2/22	at Incarnate Word	W	57-48
3/4	UMASS LOWELL	W	87-75
3/8	at Hofstra	L	68-77

Coach: Steve Lanpher

All-Time Varsity Roster

(First season: 1986-87; complete thru 2013-14)

A

ALBANESE, Alyssa 12, 13, 14
AL-SHINGIETI, Maya 08, 09
ALVAREZ, Jady 04
ALVAREZ, Liliana 91, 92, 93, 94
AUGUSTINE, Joann 95

B

BALDWIN, Ayisha 97
BALLOU, Nicole 00, 01, 02, 03
BATTISTA, Laura 94, 95
BAUMLIN, Ali 06, 07
BEGASSE, Eileen 87
BELBO, Nancy 94
BERNARDO, Carolena 87
BROWN, Jessica 88
BURNEY, Teresa 93, 94

C

CALWER, Heike 91
CORSARO, Denise 87
COURTNEY, Schevilla 96
CROWE, Kelly 04, 05, 06, 07
CRUZ, Iris 88, 90, 92

D

DALEY, Lauren 99, 00
DASH, Sharon 90
DAUMER, Kate 05, 06
DAVILA, Nidia 97
DAVIS, Nyasia 12
DAWSON, Marilyn 87
DICKINSON, Jill 06, 07, 08, 09
DIXON, Shonte 03
DOMITEROVA, Denisa 12, 13, 14
DOMONKOS, Eileen 92, 93
DUDLEY, Alana 14
DUDLEY, Olivia 14
DUNCAN, Kate 01, 02, 03, 04
DWECK, Kimberly 10, 11, 12, 13
DYER, Quinda 94

E

EBEWO, Eti 04, 05, 06
ENGLAND, Button 02

F

FELIZ, Tania 97,98
FOGG, Tamika 96, 97
FORTIER, Linda 88
FOSTER, Takiya 02
FUKAZAWA, Ursula 91
FUSCO, Elisa 88

G

GARNER, Tywana 90
GAVIN, Kerri Ann 99
GERALD, Jessica 08, 09, 10, 11
GOLDRICK, Liz 87, 90
GRANT, Natasha 91, 93
GRAY, Winsome 90
GRIFFIN, Melanie 09,10, 11 (rs), 12, 13
GRUENEWALD, Wendy 93, 94, 95, 96
GUARDADO, Luisa 96, 97, 99
GUY, Laquana 01
GYURICZA, Emese 05, 06

H

HEMINGWAY, Denaya 04, 05, 06
HENDRICKS, Lesley 07
HICKMAN, Jamie 92
HOBSON, Renee 88, 90, 92
HRNCIAR, Kim 92
HUFNAGEL, Elaine 91

J

JENERSON, Elizabeth 02
JOHNSON, Rayven 10, 11, 12, 13
JOHNSON, Adriana 08 09
JOHNSON, Hanifa 95, 96
JORDAN, Tennille 99, 00, 01, 02
JOSEPH, Jennifer 91, 94

K

KERSHAW, Selena 02, 03, 04, 05
KUBIAK, Gretchen 99
KUKAL, Sharon 98,99

L

LUPO, Jackie 03, 04, 05



Alana Dudley

M

MACK, Alexis 93,95
MACK, Demesha 90
MALINOWSKI, Tracey 87
MALLORY, Colette 94
MALOON, Merna 98
MASSEY, SchrKya 02, 03
MATCIKA, Nicole 12, 13, 14
MATEJCIKOVA, Martina 12, 13, 14
McCAFFREY, Jackie 05, 06, 08, 09
McMILLIAN, Dion 87,88
McNAIR, Tamara 96,97,98
MILLER, Alison 07, 08
MITROVIC, Sandy 93
MOSLEY, Kyrra 96
MULLEN, Veronica 99, 00

N

NWANKWO, Uju 11, 12, 13, 14

O

OCHS, Gina 91
O'CONNOR, Jackie 98,99,00,01
O'DWYER, Aine 04, 05, 06, 07
OLSON, Sarah 12, 13
OYELOLA, Kehinde 07, 08, 09, 10
OYELOLA, Taiwo 07, 08, 09, 10

P

PANTANO, Lisa 95
PARKER, Kristian 11
PATRIKIOS, Stephanie 01, 02
PIEKIELSKI, Katie 07, 08, 09, 10
POLIMEDA, Joie 98
PRESENDIEU, Aulina 99, 00, 01
PYRON, Odelia 98, 99, 00, 01

R

RAFF, Michele 94
REGGO, Lindsey 01, 02, 03, 04
RICHARDSON, Tiffany 95
ROBERTS, Deborah 92, 93, 94
ROBINSON, Erica 90
ROBINSON, Shakia 14
ROBINSON, Sharae 03
RODRIGUEZ, Brenda 95



Martina Matejickova

RODRIGUEZ, Natalie 96, 97, 98
ROESSNER, Chrissa 98

S

SAMMS, Chevanese 01, 02, 03
SANCHEZ, Maria 10, 11
SCHARTNER, Emily 10, 11
SCHMIDT, Diane 95
SERIC, Ivana 08, 09, 10, 11
SIMPSON, Kristie 95, 96
SMITH, Ashley 09
SMITH, Darnella 88
SNEED, Brandy 02
SPAHN, Camerin 14

T

THIBEAUD, Lucie 91, 92, 93, 94
THOMSON, Deanra 92
TRUKOWSKI, Tracy 94
TRYMAN, Naima 99
TUDOR, Lauren 00
TULLIS, Kim 12, 13, 14
TURNBULL, Breanna 03, 04, 05, 06

U

ULLOA, Alba 97

V

VAN WRIGHT, Nevea 92, 93, 94, 96
VELEZ, Erika 04, 05, 06, 08
VETRA, Ruta 14
VOGEL, Colleen 07, 08
VOGEL, Jessica 03, 04, 05, 06

W

WASHINGTON, Keri 08
WASHINGTON, Lisa 87
WEBER, Cynthia 95
WIGHTON, Kathryn 07, 08, 09, 10
WILLIAMS, Marcy 11
WINCHESTER, Melsha 98, 99, 00, 01
WOMACK, Racquel 93
WORLEY, Sandy 88,90



Ruta Vetra

Z

ZAMBRANO, Claudia 97, 98
ZIEMBA, Melissa 96
ZORIC, Jelena 11, 12, 13

*Note: Only second year of playing season is listed;
i.e., 95 = 1994-95 season.*

*Only second year of playing season listed; i.e. 03 =
2002-03 season.*

**Corrections welcome. Please contact
Stephanie Pillari at pillari@njit.edu**

Current players bold

All-Time Awards and Honors

CONFERENCE CHAMPIONSHIPS

Independent Athletic Conference
1996 (Tournament)

ALL-CONFERENCE

Women's Intercollegiate Athletic Conference

1987-88 Dion McMillian,
Sandy Worley (2nd)
1989-90 Tywana Garner (2nd)
1990-91 Liliana Alvarez
1991-92 Nevea Van Wright (hm)
1992-93 Nevea Van Wright
1993-94 Kristie Simpson
Lauren Battista (2nd)
Wendy Gruenewald (2nd)
1995-96 Nevea Van Wright
Wendy Gruenewald
Kristie Simpson (2nd)
1996-97 Tamika Fogg
Tamara McNair (2nd)

New York Collegiate Athletic Conference

1997-98 Sharon Kukal (2nd)
1998-99 Sharon Kukal

Central Atlantic Collegiate Conference

2001-02 SchrKya Massey
2002-03 SchrKya Massey
2004-05 Kelly Crowe (2nd and All-Tourn)
Selena Kershaw (3rd)
2005-06 Kelly Crowe (3rd)
Selena Kershaw (3rd)

DIVISION I ERA

NCAA DIVISION I INDEPENDENT NEWCOMER OF THE YEAR

2007-08 Jessica Gerald

ALL-NCAA DIVISION I INDEPENDENT

2007-08 Taiwo Oyelola (hm)

ALL-GREAT WEST CONFERENCE

2009-10 Jessica Gerald (1st)
Taiwo Oyelola (hm)
2010-11 Jessica Gerald (2nd)
Rayven Johnson (hm)
Ivana Seric (hm)
2011-12 Rayven Johnson (1st)
Denisa Domiterova (2nd)
Nicole Maticka (hm)
2012-13 Rayven Johnson (1st)
Uju Nwankwo (2nd)
Kimberly Dweck (hm)

GREAT WEST CONFERENCE DEFENSIVE PLAYER OF THE YEAR

2012-13 Uju Nwankwo
(Co-Defensive Player of the Year)

GREAT WEST CONFERENCE NEWCOMER OF THE YEAR

2011-12 Denisa Domiterova

GREAT WEST CONFERENCE ALL-NEWCOMER TEAM

2011-12 Denisa Domiterova

NCAA DIVISION I INDEPENDENT ALL ACADEMIC

2006-07 Ali Baumlín, Kelly Crowe
Aine O'Dwyer
2007-08 Katie Piekelski
Jill Dickinson
Kathryn Wighton
2008-09 Maya Al-Shingieti
Jill Dickinson
Katie Piekelski
Ivana Seric

GREAT WEST CONFERENCE ALL-ACADEMIC

2009-10 Jessica Gerald,
Katie Piekelski
Ivana Seric
2010-11 Jessica Gerald
Maria Sanchez
Emily Schartner
Ivana Seric

CONFERENCE ACADEMIC PLAYER OF THE YEAR

New York Collegiate Athletic Conference
1999-2000 Lauren Daley

ALL-JERSEY 9 ASSOCIATION

1992-93 Nevea Van Wright
1993-94 Wendy Gruenewald

ALL-NJCBCA

1995-96 Wendy Gruenewald
1997-98 Sharon Kukal
1998-99 Sharon Kukal

NJCBCA PLAYER OF THE YEAR

1998-99 Sharon Kukal

ALL-MET WRITERS (Division II)

1998-99 Sharon Kukal
2002-03 SchrKya Massey (2nd)
2003-04 Kelly Crowe (2nd)
2004-05 Kelly Crowe (1st)
2005-06 Kelly Crowe (1st)

ALL-MET WRITERS (Division I)

2012-13 Rayven Johnson

ALL-TIME TEAM MVPS

1986-87
1987-88 Dion McMillian
1988-89 no team
1989-90 Tywana Garner
1990-91 Liliana Alvarez
1991-92 Nevea Van Wright
1992-93 Nevea Van Wright
1993-94 Nevea Van Wright
1994-95 Wendy Gruenewald
1995-96 Nevea Van Wright
1996-97 Tamika Fogg
1997-98 Sharon Kukal
1998-99 Sharon Kukal
1999-00 Lauren Daley
2000-01 Jackie O'Connor
2001-02 SchrKya Massey
2002-03 Nicole Ballou, SchrKya Massey
2003-04 Kelly Crowe
2004-05 Kelly Crowe
2005-06 Kelly Crowe, Selena Kershaw
2006-07 Jill Dickinson
2007-08 Jessica Gerald
2008-09 Jessica Gerald
2009-10 Jessica Gerald
2010-11 N/A
2011-12 N/A
2012-13 Rayven Johnson
2013-14 Alyssa Albanese

ALL-TIME CAPTAINS

1986-87 Tracey Malinowski, Dion McMillian
1987-88 Dion McMillian
1988-89 no team
1989-90
1990-91
1991-92
1992-93
1993-94
1994-95 Lauren Battista, Wendy Gruenewald
1995-96
1996-97
1997-98
1998-99 Sharon Kukal
1999-00 Lauren Daley, Jackie O'Connor
2000-01 Jackie O'Connor, Odelia Pyron
2001-02 Nicole Ballou, Chevanese Samms
2002-03 Nicole Ballou, SchrKya Massey
2003-04 Kate Duncan, Lindsey Reggo
2004-05 Kelly Crowe, Selena Kershaw
2005-06 Kelly Crowe, Selena Kershaw
2006-07 Kelly Crowe, Aine O'Dwyer
2007-08 Katie Piekieski
2008-09 Jackie McCaffrey
2009-10 Game captains
2010-11 Game captains
2011-12 Game captains
2012-13 Rayven Johnson
2013-14 Shakia Robinson, Uju Nwanwko, Kim Tullis

All-Time Records vs. Opponents

Adelphi	0-6	Iowa State	0-0	Saint Peter's	2-2
Albany	1-3	John Jay	1-0	Saint Leo	0-2
American International	0-2	Johns Hopkins	0-1	Saint Rose	0-6
American	0-2	Kutztown	2-4	Savannah State	4-3
Assumption	0-2	Lafayette	1-3	Seton Hall	0-2
Bard	2-0	La Roche	1-0	SIUE	0-1
Baruch	4-0	Lehigh	0-8	St. Augustine	0-2
Bethel	0-1	Lehman	2-0	St. Elizabeth	4-15
Bloomfield	4-5-1	Lynn	0-1	St. Francis (Brooklyn)	1-3
Boston College	0-1	Long Island Brooklyn	1-2	St. John's	0-1
Bridgeport	0-1	Longwood	2-5	St. Joseph's (Brooklyn)	1-0
Brown	3-1	Maine	2-0	St. Joseph's (LI)	0-1
Bryant (Division II)	0-1	Manhattan	0-2	Saint Joseph's (PA)	0-1
Bryant (Division I)	0-2	Manhattanville	1-3	St. Paul's	0-1
Bucknell	2-1	Marshall	0-1	St. Thomas Aquinas	0-1
Buffalo	0-1	Marquette	0-1	Southampton	0-9
CSU Bakersfield	1-0	Maryland Eastern Shore	0-1	South Dakota	1-4
Centenary (NJ)	7-8	Medgar Evers	3-1	South Dakota State	0-3
Central Connecticut State	1-0	Mercy	3-4	Southern Connecticut	0-1
CCNY	4-0	Minnesota	0-1	Staten Island	2-2
Chicago State	4-8	Missouri	0-1	Stevens	2-0
Clemson	0-1	Molloy	3-4	Stonehill	0-2
Colgate	2-3	Monmouth	0-2	Stony Brook	0-2
Columbia	0-1	Montclair State	0-1	Texas-Pan American	12-5
Concordia (NY)	4-2	Morgan State	0-2	Texas A&M Kingsville	0-1
Cornell	0-2	Mount Saint Mary (NY)	0-12	UMass	0-2
CW Post	2-4	Mount Saint Vincent	8-7	UMass Lowell	1-0
Dartmouth	0-1	Navy	0-2	UMBC	1-0
Davidson	0-1	Nazareth	0-1	Upsala	0-11
Delaware State	2-2	Nebraska-Kearney	0-1	Utah Valley	7-11
DePaul	0-1	New Hampshire	0-2	USP	3-10
District of Columbia	1-3	New Haven	0-2	Vassar	1-1
Dominican (NY)	7-7	New Jersey, College of	0-1	Virginia Commonwealth	0-2
Dowling	3-3	New Rochelle	2-0	Virginia Tech	0-1
Drew	2-7	New York Maritime	8-1	Virginia-Wise	1-0
East Stroudsburg	1-0	NYIT	4-0	Wagner	4-3
Eckerd	0-2	Norfolk State	1-0	Warner Southern	0-1
Elizabeth City	0-1	Northeastern	0-2	West Virginia	0-1
FDU-Teaneck	3-5	North Dakota	0-7	William Paterson	0-1
Felician	8-4	North Dakota State	0-2	William & Mary	0-1
Florida Gulf Coast	0-1	North Florida	1-0	Wilmington (DE)	10-3
Fordham	0-1	Notre Dame (RI)	0-1	Winston-Salem State	0-1
Georgian Court	8-6	Nyack	10-2	Yale	0-2
Goldey-Beacom	12-0	Old Westbury	1-4	Yeshiva	7-0
Greensboro	0-1	Penn	2-1	York (NY)	5-2
Harvard	0-3	Penn State	0-2		
Holy Family	0-13	Philadelphia	1-9		
Hofstra	0-2	Post (CT)	9-3		
Houghton	0-1	Princeton	0-2		
Houston Baptist	8-1	Queens (NY)	6-1		
Howard	1-3	Rhode Island	1-3		
Hunter	1-2	Richard Stockton	0-3		
IPFW	0-2	Rider	1-1		
Incarinate Word	1-0	Rutgers-Newark	1-2		

Total Division I era (includes 2 games vs. DII opponents, 1-1; includes 3 games vs. DIII opponents, 3-0) – 77-156 -- .330
Total Division II era – 109-138 -- .441
Total Division III era – 69-122 --.361
Total All-Time – 255-416 -- .380

All-Time Records vs. Division I Opponents

American	0-2
Binghamton	0-0
Boston College	0-1
Brown	3-1
Bryant	0-2
Bucknell	2-1
Buffalo	0-1
CSU Bakersfield	1-0
Central Connecticut State	1-0
Chicago State	4-8
Clemson	0-1
Colgate	2-3
Columbia	0-1
Cornell	0-2
Davidson	0-1
Delaware State	2-2
Dartmouth	0-1
DePaul	0-1
FDU-Teaneck	3-5
Florida Atlantic	0-0
Florida Gulf Coast	0-1
Fordham	0-1
Harvard	0-3
Hofstra	0-2
Houston Baptist	8-1
Howard	1-3
IPFW	0-2
Incarnate Word	1-0

Iowa State	0-0
Lafayette	1-3
Lehigh	0-8
Long Island Brooklyn	1-2
Longwood	2-5
Maine	2-0
Manhattan	0-2
Marquette	0-1
Marshall	0-1
Maryland-Eastern Shore	0-1
Minnesota	0-1
Missouri	0-1
Monmouth	0-2
Morgan State	0-2
Navy	0-2
Norfolk State	1-0
New Hampshire	0-2
North Dakota	0-7
North Dakota State	0-2
Northeastern	0-2
North Florida	0-1
Penn.	2-1
Penn State	0-2
Princeton	0-2
Rider	1-1
Rhode Island	1-3
Savannah State	4-3
St. Francis Brooklyn	1-3

St. John's (NY)	0-1
Saint Joseph's	0-1
Saint Peter's	2-2
Seton Hall	0-2
South Dakota	1-4
South Dakota State	0-3
Southern Illinois Edwardsville	0-1
Stony Brook	0-2
Texas-Pan American	12-5
UAlbany	1-3
UMass	0-2
UMass Lowell	1-0
UMBC	1-1
Utah Valley	5-10
Virginia Commonwealth	0-2
Virginia Tech	0-1
Wagner	4-3
West Virginia	0-1
William & Mary	0-1
Winston-Salem State	0-1
Wofford	0-0
Yale	0-2

2014-15 opponents in bold
 Total Division I era (since 2006-07) (includes 2 games vs. DII opponents, 1-1; includes 3 games vs. DIII opponents, 3-0)
 – 77-156 -- .330

All-Time NJIT Coaching Records

Name	WIN	LOSS	PCT.	SEASONS
(NCAA Division III era (10 seasons; 1986-87 to 1987-88; 1989-90 to 1996-97)				
John Speiss	0	15	.000	1 (1986-87)
Dave DeNure	2	11	.154	1 (1987-88)
Bill Avant	0	12	.000	1 (1989-90)
Brenda Zabriskie-DeNure	44	64	.407	5 (1990-95)
Maureen O'Neil	16	5	.762	1 (1995-96)
Bill McColl	7	15	.318	1 (1996-97)
NCAA Division II era (9 seasons; 1997-98 to 2005-06)				
Kim Barnes Arico	16	37	.302	2 (1997-99)
Sharon Manning Beverly	30	51	.370	3 (1999-02)
Kim Bowen Lusk	63	50	.558	4 (2002-06)
NCAA Division I era begins in 2006-07				
Kim Bowen Lusk	4	24	.143	1 (2006-07)
Bowen Lusk total	67	74	.475	5 (2002-07)
Margaret McKeon	49	96	.338	5 (2007-12)
Steve Lanpher	24	36	.400	2 (2012-pres.)
All-Time Total	271	431	.386	27 (1986-present)

Hall of Fame

Name	Grad. Year	Contribution	Sport (s)	Years Active	Year of Induction	Name	Grad. Year	Contribution	Sport (s)	Years Active	Year of Induction
BAKUN, Andrew I.	1982	Athlete/Asst. Coach	M-Soccer	1978-81/ 90-91	2005	IRIS, Herb	1951	Benefactor	--	--	2007
BAKUN, Myron	1967	Athlete	M-Soccer	1964-66	1991	KAMINSKY, Nicholas J.	1978	Athlete	Baseball	1975-78	2006
BARTH, Roland E.	1960	Athlete	M-Fencing	1957-59	2009	KASBARIAN, Raymond P.	1966	Founder/Athlete	Judo	1962-66	1989
			M-Soccer	1956-59		KETZNER, Robert Shelby	--	Coach	Rifle	1962-86	1987
BAUDER, Fred "Coach"	--	Coach	M-Basketball	1932-61	1989	KHOWAYLO, Alex	1969	Athlete	M-Soccer	1960-63	1996
BLUM, Raymond E.	1950	Distinguished Alumnus	Speedskating/ Cycling	--	1996	LUBETKIN, Charles "Tudy"	1953	Athlete	M-Basketball/ M-Track	1949-52	1994
						LYNCH, Robert K.	1984	Athlete/Coach	M-Fencing	1977-80/ 86-91	1993
BORJA, Hernan "Chico"	1981	Athlete	M-Soccer	1977-80	1986	MacDONALD, Dan	1984	Athlete	Baseball	1981-84	1992
BORNAKO, Gregory "Egor"	1970	Athlete	M-Fencing	1966-70	1987	OLSEN, Richard J.	1969	Athlete	M-Basketball	1965-69	1988
BOWSER, Hamilton V.	1952	Athlete	M-Fencing	1948-52	1989	OLSON, George R.	1977	Athlete	Baseball	1974-77	1987
BRADLEY, Thomas	1978	Athlete	M-Swimming	1974-78	1990	PAULIUS, Raymond V.	1985	Athlete	M-Soccer	1980-83	2006
BROWN, Andrew D.	1963	Athlete	M-Soccer	1956-59	2006	RODGERS, Tarik	1996	Athlete	M-Volleyball	1992-95	2010
CRIMMINS, David	1952	Athlete	M-Fencing	1948-52	2007	ROGERS, Warren	1988	Athlete	M-Basketball	1983-87	1993
CRUZ, Edward	1963	Athlete	M-Soccer	1959-62	1995	ROMULUS, Rudy	1991	Athlete	M-Volleyball	1988-91	1996
DAWSON, Marilyn E.	1986	Athlete	WVB/WBKB/SB	1982-86	1991	ROSS, Jonathan A.	1956	Athlete	M-Soccer	1953-55	2010
DeNICOLA, Carmine P.	1978	Athlete	Baseball	1975-78	2005	SARLO, Paul A.	1992	Athlete	Baseball	1989-91	2005
DeNURE, Dave	--	Coach	M-Volleyball W-Volleyball W-Basketball	1982-98 1986-90 1987-88	2009	SCHMID, John "Gene"	--	Asst Coach/Coach	Baseball	1968-72/ 73-97	2002
DeVITO, Louis	1960	Athlete	M-Soccer/ M-Fencing	1956-60	1992	SIMON, J. Malcolm	--	Coach	M-Soccer	1955-83	1994
								Director of Athletics	--	1983-94	
DIAS, Joe A.	1977	Athlete	M-Soccer	1973-76	1993	SKURLA, Peter J.	1941	Athlete	Bowling	1937-41	1992
DRURY, Eugene M.	1963	Athlete	M-Tennis	1960-63	1988	SORIANO, Gregory	1975	Athlete	M-Fencing	1968-72	2010
ENG, Katherine	1993	Athlete	W-Volleyball	1989-92	2007	SWANSON, Robert F.	--	Director of Athletics	--	1947-82	1986
ETIENNE, Yves	1979	Athlete	M-Volleyball	1976-78	1990	TAETZSCH, Robert	1952	Athlete	M-Fencing	1948-52	2007
FEHN, Gilbert F.	1940	Athlete	M-Basketball/ M-Tennis	1936-40	1992	TAETZSCH, William	1952	Athlete	M-Fencing	1948-52	2007
FITZGERALD, Joseph M.	--	Coach/Asst. Coach	M-Basketball	1961-66/ 52-61	1986	TOSATO, Lawrence P.	1956	Athlete	M-Basketball/ Baseball	1952-56	1987
FLEISHER, Seymour "Zoom"	1951	Athlete	M-Basketball	1947-51	1992	TUBELLO, Jeffrey	1976	Athlete	Rifle	1972-76	1988
GAGLIARDO, Salvatore A.	1985	Athlete	M-Basketball	1981-85	1995	VAN WRIGHT, Nevea	1997	Athlete	W-Basketball	1991-96	2005
GALLAGHER, Thomas G.	1985	Athlete	M-Basketball	1981-85	1991	WALSH, John J.	1966	Athlete	MSoc/MBKB/ Baseball	1962-66	1986
GIOVANNOLI, Arnold L.	1953	Athlete	M-Basketball	1950-53	1993	WASNIEWSKI, Frank	1980	Athlete	M-Tennis	1977-80	1990
GOLDRICK PITT, Elizabeth M.	1990	Athlete	W-Volleyball/ Softball/WBKB/WTen	1985-90	1995	WELGOS, Bob	1962	Athlete	M-Basketball/ Bowling	1959-62	2005
GRAZIANO, Jean M.	1989	Athlete	Softball	1986-89	2009	WOROBEC, Myron S.	1966	Athlete	M-Soccer	1962-65	1994
GRUENEWALD, Wendy A.	1997	Athlete	WBKB/Softball/ W-Volleyball/W-Soccer	1992-96	2003	YONEZUKA, Yoshishada	--	Founder/Coach	Judo	1962-?	1991
HAASE, Jay W.	1975	Athlete	M-Fencing	1971-75	1988	ZORN, Werner	1962	Athlete	M-Soccer	1958-61	1988
HAMMOND, Kenneth W.	1979	Athlete	M-Soccer	1974-77	2003						
HANDWERKER, Andy	1963	Athlete	M-Soccer	1959-62	2002	Teams	Year	Accomplishments		Year of Induction	
HAUSSER, Paul C.	--	Administrator Coach	-- Fencing/Baseball	1953-91 1954-88/53-72	1990	Men's Soccer	1960	NAIA co-National Champion		1988	
HUBEY, Ali	1972	Athlete	M-Soccer	1968-71	1990	Men's Basketball	1981-82	NJIT's first ECAC and IAC champion		1990	
HURTADO, Fabian	1975	Athlete	M-Soccer	1970-74	1987	Baseball	1982	NJIT's second ECAC and IAC champion		1993	

Directions

FOR GPS USERS

The address for Lubetkin Field at Mal Simon Stadium, the Estelle and Zoom Fleisher Athletic Center, and the Naimoli Family Athletic and Recreational Facility is 80 Lock Street, Newark, NJ, 07102.

BY CAR

New Jersey Turnpike: Driving North from South

Jersey: Take NJ Turnpike to Exit 13A Newark Airport. After toll stay to left and follow signs to Rt. 1 & 9 North. You will merge onto Rt. 1 & 9 North. Airport will be on right. Follow signs for downtown Newark and Rt. 21 North (left lane exit ramp). Downtown Newark will be in front of you. NYC will be off to your right. Follow Rt. 21 North (McCarter Highway). Turn left on Raymond Blvd. Follow Raymond Blvd. past Warren Street traffic light and Fleisher Athletic Center, Naimoli Center, and Lubetkin Field at Mal Simon Stadium will be to your right (one soccer goal line runs along Warren Street and the soccer sideline parallels Lock Street).

New Jersey Turnpike: Driving South from North

Jersey: Take exit 15W to Route 280 West, then follow Route 280 West directions.

Route 280 West: After drawbridge, take Exit 15A (Rt. 21 South - McCarter Highway). Follow Rt. 21 South to Raymond Blvd. Turn right on Raymond Blvd. Follow Raymond Blvd. past Warren Street traffic light and Fleisher Athletic Center, Naimoli Center, and Lubetkin Field at Mal Simon Stadium will be to your right (one soccer goal line runs along Warren Street and the soccer sideline parallels Lock Street).

Route 280 East: Take Exit 15 (Rt. 21 South - McCarter Highway). Follow Rt. 21 South to Raymond Blvd. Turn right on Raymond Blvd. Follow Raymond Blvd. past Warren Street traffic light and Fleisher Athletic Center, Naimoli Center, and Lubetkin Field at Mal Simon Stadium will be to your right (one soccer goal line runs along Warren Street and the soccer sideline parallels Lock Street).

Garden State Parkway (North & South bound): Take exit 145 to Route 280 East, then follow Route 280 East directions.

Route 1 & 9 North & South: Take exit marked Newark, Rt. 21 North (McCarter Highway). Follow Rt. 21 North (McCarter Highway). Turn left on Raymond Blvd. Follow Raymond Blvd. past Warren Street traffic light and Fleisher Athletic Center, Naimoli Center, and Lubetkin Field at Mal Simon Stadium will be to your right (one soccer goal line runs along Warren Street and the soccer sideline parallels Lock Street).

Route 78 East: Take Route 78 East to Rt. 21 North. Turn left on Raymond Blvd. Follow Raymond Blvd. past Warren Street traffic light and Fleisher Athletic Center, Naimoli Center, and Lubetkin Field at Mal Simon Stadium will be to your right (one soccer goal line runs along Warren Street and the soccer sideline parallels Lock Street).

Route 22 East: Take Route 22 East to Route 21 North. Turn left on Raymond Blvd. Follow Raymond Blvd. past Warren Street traffic light and Fleisher Athletic Center, Naimoli Center, and Lubetkin Field at Mal Simon Stadium will be to your right (one soccer goal line runs along Warren Street and the soccer sideline parallels Lock Street).



Stadium will be to your right (one soccer goal line runs along Warren Street and the soccer sideline parallels Lock Street).

Route 21 North: Follow Rt. 21 North to Raymond Blvd. Turn left onto Raymond Blvd. Follow Raymond Blvd. past Warren Street traffic light and Fleisher Athletic Center, Naimoli Center, and Lubetkin Field at Mal Simon Stadium will be to your right (one soccer goal line runs along Warren Street and the soccer sideline parallels Lock Street).

Route 21 South: Follow Rt. 21 South (McCarter Highway) to Raymond Blvd. Turn Right on Raymond Blvd. Follow Raymond Blvd. past Warren Street traffic light and Fleisher Athletic Center, Naimoli Center, and Lubetkin Field at Mal Simon Stadium will be to your right (one soccer goal line runs along Warren Street and the soccer sideline parallels Lock Street).

New York Thruway: Thruway to Exit 14A, Garden State Parkway. Follow Garden State Parkway directions above.

George Washington Bridge: NJ Turnpike South to Exit 15W. Follow Route 280 West directions above.

Lincoln Tunnel: West on Rt. 3 to Rt. 21 South. Turn right onto Raymond Blvd. Follow Raymond Blvd. past Warren Street traffic light and Fleisher Athletic Center, Naimoli Center, and Lubetkin Field at Mal Simon Stadium will be to your right (one soccer goal line runs along Warren Street and the soccer sideline parallels Lock Street).

From Brooklyn, Queens and Long Island: Take Verrazano-Narrows Bridge (Interstate 278) and follow 278 across Staten Island. Cross Goethels Bridge. Follow signs to New Jersey Turnpike North then follow New Jersey Turnpike directions above.

PARKING

Bus/Van Parking: Visiting buses and vans may usually park on Lock Street adjacent to the athletic center. Please be careful not to block the parking space reserved for the doctor.

Visitor Parking: Visitor parking may be reserved in advance through your host. Otherwise, visitor parking at NJIT is available in the NJIT parking deck. Turn right onto Warren Street. Turn right onto Colden Street and proceed around the block to Summit Street. Parking Deck entrance is located to your right before the intersection with Warren Street.

Parking for on-campus athletic contests: NJIT is offering free off-street parking for fans attending regular season home soccer and volleyball matches and basketball games. The parking entrance, marked by a yellow sign is located on New Street.

OTHER TRANSPORTATION SYSTEMS

Newark Liberty International Airport: Minutes from the NJIT campus. A minibuss (Newark Airlink) or taxi service connects the airport with Penn Station in Newark. Bus, Newark Light Rail, and taxi connections are available at the station.

Newark Penn Station: Located in downtown Newark, connections to the NJIT campus may be made by bus, Newark Light Rail, or taxi.

Morris & Essex Broad Street Station: A five-block walk to the NJIT campus via MLK Boulevard to Central Avenue. Taxi service is also available.

Newark Light Rail: From Penn Station in Newark, take the Warren Street stop for the NJIT campus. The Warren Street stop is on the sidewalk behind the press box for Lubetkin Field at J. Macolm Simon Stadium.

HOTELS DOWNTOWN

Hilton Newark Gateway

Gateway Center, Raymond Boulevard & McCarter Highway
Newark, NJ, 973/622-5000

Robert Treat Hotel

50 Park Place, Newark, NJ, 973/622-1900

Hampton Inn & Suites Newark Riverwalk

100 Passaic Ave, Harrison, NJ, 973/483-1900

NEAR NEWARK LIBERTY INTERNATIONAL AIRPORT

Best Western Newark Airport West

101 International Way, Newark, NJ, 973/621-6200

Hilton Newark Airport

1170 Spring Street, Elizabeth, NJ, 908/351-3900

Holiday Inn Newark Liberty International Airport

160 Frontage Road, Newark, NJ, 973/589-1000



2014-15 Women's Basketball

Standing Row (l-r): Assistant Coach Epiphany Smith, Kelby Payano, Leah Horton, Ruta Vetra, Maria Ruban, Camerin Spahn, Ronni Grandison, Alana Dudley, Assistant Coach Mark McCaleb, Assistant Coach La Kea Jones

Sitting Row (l-r): Bianca Picard, Martina Matejcikova, Nicole Maticka, Head Coach Steve Lanpher, Kim Tullis, Alyssa Albanese, Kelly Guarino

2014-15 HIGHLANDERS WOMEN'S BASKETBALL

NOVEMBER

14	Fri.	at New Hampshire	11:00 a.m.
16	Sun.	at Dartmouth	2:00 p.m.
19	Wed.	at Fairleigh Dickinson	7:00 p.m.
21	Fri.	LEHIGH	7:00 p.m.
25	Tue.	ST. FRANCIS BROOKLYN	7:00 p.m.

Florida Atlantic Thanksgiving Tournament

28	Fri.	at Florida Atlantic	12:00 p.m.
29	Sat.	vs. Northeastern/North Dakota St.	4:30 p.m./TBD

DECEMBER

2	Tue.	WAGNER	7:00 p.m.
6	Sat.	BINGHAMTON	12:00 p.m.
9	Tue.	HOFSTRA	5:30 p.m.
11	Thu.	LIU BROOKLYN	7:00 p.m.
14	Sun.	at St. John's	2:00 p.m.
19	Fri.	at Seton Hall	7:00 p.m.
21	Sun.	at Lafayette	2:00 p.m.
29	Mon.	at Clemson	7:00 p.m.

JANUARY

2	Fri.	at Wofford	1:00 p.m.
4	Sun.	CHICAGO STATE	2:00 p.m.
7	Wed.	TEXAS-PAN AMERICAN (Education Day)	11:30 a.m.
12	Mon.	COLUMBIA	7:00 p.m.
18	Sun.	at Harvard	2:00 p.m.
20	Tue.	at Brown	11:30 a.m.
24	Sat.	PENN	2:00 p.m.

FEBRUARY

3	Tue.	DELAWARE STATE	5:30 p.m.
7	Sat.	COLLEGE OF ST. JOSEPH (VT)	2:00 p.m.
11	Wed.	MORGAN STATE	7:00 p.m.
16	Mon.	at Texas-Pan American	7:00 p.m. (CT)
24	Tue.	MARYLAND EASTERN SHORE	7:00 p.m.
27	Fri.	ST. JOSEPH'S BROOKLYN (SENIOR DAY)	7:00 p.m.

MARCH

3	Tue.	at UMass Lowell	7pm
---	------	-----------------	-----

Head Coach: Head Coach: Steve Lanpher
(College of St. Joseph (VT), '87), third season

Assistant Coaches: Mark McCaleb (Massachusetts '89),
LaKea Jones (Virginia Commonwealth, '08), Epiphany Smith (Saint Anselm (NH), '12)
Home games CAPS/BOLD played at the Estelle and Zoom Fleisher Athletic Center