

Women's Basketball
2007-08



njithighlanders.com



NJIT™

New Jersey's Science &
Technology University



About NJIT.....	2-3
University Administration	4
Student-Athlete Support	5
NJIT in Division I	6
Coaching Staff.....	7-8
All-Time Coaching Records	9
Roster	10
Outlook	11-13
Player Profiles.....	14-24
2006-07 Statistics and Results	25
Athletic Facilities	26
About Newark.....	27
Happenings In and Around Newark	28
School Records	29-32
All-Time Results	33-35
Division I Superlatives	35
All-Times Roster/Series Records	36
2007-08 Opponents Information.....	37-40
Directions/Accommodations	41
Athletics/PE Staff	42
NJIT Hall of Fame	43
Spotters Chart.....	44

Front cover (l-r): Femi Oyelola (50); Jill Dickinson (33); Taiwo Oyelola; captain Katie Piekieski (14; Steve Smith photo). **Back cover:** 2007 Midnight Madness; **Inside front cover:** Eberhardt Hall. **Inside back cover:** the 2007-08 Highlanders team picture (all photos by Larry Levanti, except as noted).

MEDIA INFORMATION

This guide is designed to assist in coverage of NJIT basketball. For home games, the NJIT sports information office will provide an official box score 10 minutes following each game. Coach Margaret McKeon and requested players will be available for interviews following a 10-minute cooling-off period. Radio broadcast requests should be made at least 10 business days prior to the contest.

Requests for coach and player interviews on non-game days should be made through the NJIT sports information office (973-596-8461).

CREDITS

The 2007-08 NJIT Women's Basketball Media Guide is a production of the NJIT Sports Information Office in cooperation of the Office of University Communications. Compiled, written and edited by Tim Camp and Stephanie Pillari. Cover and interior design by Samantha Horning Graphic Design. NJIT photographs and information

courtesy of University Communications. Page 26 photo of the Prudential Center, courtesy of the New Jersey Devils. Page 5 (Rigby headshot); action photos on pages 8, 10, 12, 13 (F. Oyelola), 14, 16 (by Steve Smith). Page 15 and 16 action photos (by Jim Clarke), All other team and action photos by Larry Levanti. Printing by Prestige Graphics, Union, NJ.

WHY THE HIGHLANDERS?

The home of NJIT, University Heights, was formerly known as the Newark Highlands and NJIT's mailing address used to be High Street, until the thoroughfare was re-named in memory of Dr. Martin Luther King, Jr.

In 2006-07, NJIT athletics, in keeping with its move to NCAA Division I, is unveiling a new graphic identity, which includes a new Highlanders logo. Developed by CN Foundry for NJIT, the logo depicts the traditional Highlander, whose courage and bravery against all odds are the stuff of legend.



QUICK FACTS

NEW JERSEY INSTITUTE OF TECHNOLOGY (NJIT)

Location: University Heights, Newark, NJ

Founded: 1881

Enrollment: 5,380 (undergraduate)

NJIT website: www.njit.edu

Nickname/colors: Highlanders/red and white (blue accent)

Home court: Estelle and Zoom Fleisher Athletic Center/Prudential Center (1,500/18,500)

Affiliations: NCAA Division I, ECAC

Conference: Independent

University President:

Dr. Robert A. Altenkirch

Director of Athletics: Lenny Kaplan

Athletic Department phone:

973-596-3636

Sports Information

NJIT athletics website:

www.njithighlanders.com

Results hotline: 973-596-5555

Assistant AD for Sports Information:

Tim Camp (973-596-8461;

timothy.camp@njit.edu)

Assistant SID: Stephanie Pillari

(973-596-8324; pillari@adm.njit.edu)

Women's Basketball

Head coach (alma mater, year):

Margaret McKeon (St. John's '91)

Contact info: 973-596-3633;

margaret.m.mckeeon@njit.edu

Record at School: First year

Assistant coaches: Siobhan Kilkenny, Mary Kacic

Captain: Katie Piekieski

NJIT is New Jersey's Science & Technology University. With roots going back to 1881, when it was founded as Newark Technical School, New Jersey Institute of Technology observed its 125th anniversary in 2006.

Located in University Heights, Newark, NJ, home to more than 30,000 college students, NJIT's campus is just 10 miles from New York City.

Playing a critical role in shaping New Jersey's future, NJIT, as a major public technological university, is an important pipeline for the flow of technology into society. The university's educational programs prepare students to be leaders in the technology-dependent economy of the 21st century. University researchers seek new knowledge to improve processes and products for industry. Through public and private partnerships and economic development efforts, the university helps to grow new business ventures that fuel the economy.

In recent years, NJIT has put more than \$83 million toward new and improved buildings and facilities on the 45-acre campus, including biomedical engineering labs and a campus center.

INSTRUCTIONAL PROGRAMS

NJIT offers 92 degree programs — 33 undergraduate, 40 master's and 19 doctoral programs — through six schools:

Newark College of Engineering
New Jersey School of Architecture
College of Science and Liberal Arts
School of Management
Albert Dorman Honors College
College of Computing Sciences

NJIT has 416 full-time faculty; more than 98 percent of whom hold the highest degree in their field. The student-faculty ratio is 13:1, with more than 5,200 undergraduate students and nearly 2,800 graduate students. Our students hail from 33 states and more than 100 countries to rank eighth in the nation for diversity.

Albert Dorman Honors College enrolls more than 500 students who take advantage of honors courses, research opportunities, advising and mentoring. Honors College students have SAT scores ranking in the top 10 percent nationally.

RESEARCH

NJIT drew more than \$75 million in research funding in 2005 and faculty members welcome student collaboration on research projects.

ECONOMIC DEVELOPMENT

NJIT is committed to economic development for Newark and the region. The university operates several outreach centers that provide direct technical assistance to the state's businesses with the goal of helping small and medium-sized companies. NJIT is also the home of New Jersey's oldest and largest incubator facility, and was one of the first institutions in the nation to adopt economic development as a fourth mission element, together with instruction, research and community service. More than 60 technology start-up companies, many of which hire NJIT students, are on campus.

THE CAREER EDGE

All 10 of the majors with the highest starting salaries for 2005-06 grads are in engineering, computing and business, according to the National Association of Colleges and Employers.

Computer and data processing services lead the list of the 10 fastest-growing occupations in projections compiled by the US Department of Labor. Computer-related employment is expected to grow 117 percent by 2008, according to the Career Guide to Industries.





THE TECHNOLOGY EDGE

NJIT has been designated one of the nation's most technologically sophisticated universities by Forbes.com and a Princeton Review survey and the university has received major funding from the National Science Foundation and the National Security Agency in recent years.

THE ACADEMIC EDGE

NJIT has long been a national leader in applying new technologies and approaches to the educational experience. NJIT was a pioneer in requiring computer science for students in all majors and the School of Architecture has led innovations in teaching CAD and digital design. The school's innovative "paperless" first-year program was recently cited by Campus Technology Magazine.

Students have a wide range of educational choices in building an interest-tailored program. Among their options are cross-enrolling at neighboring Rutgers to enrich their program with subjects such as music and languages.

NJIT students learn emerging technologies from the researchers behind the technologies, developing valuable marketplace skills. Real-world experience through experiential learning makes graduates more marketable, with many co-op opportunities leading to permanent jobs.

THE REGIONAL EDGE

New Jersey, with America's highest concentration of pharmaceutical, hi-tech, biotech, and medical device companies is the place to study technology. It has the nation's highest per capita number of engineers and scientists as residents, while also leading in per capita rate of patents issued. Further, the Newark-New York region is a living laboratory for architecture and building sciences, environmental engineering and transportation.

THE RESEARCH EDGE

NJIT has been designated by the State of New Jersey as the Homeland Security Technology Systems Center and NJIT operates the world-renowned Big Bear Solar Observatory.

A HISTORY OF NJIT

From the Industrial Revolution to the Information Age, New Jersey Institute of Technology has a rich history with its beginnings developing from the industrial age.

In 1881, an act of the New Jersey State Legislature, recognizing an urgent need, sought a home for what would be the state's technical school. The efforts of Newark's public and private sectors resulted with the opening of Newark Technical School, addressing the state's need.

Over time, the university expanded its curriculum and mission. In 1919, the university established baccalaureate programs in three engineering fields. By the middle of the 20th century, Newark Technical School was transformed into the robust Newark College of Engineering.

The post-war period was one of enormous activity with regular expansion of the campus, as well as the introduction of doctoral level programs. In 1975, with the addition of the New Jersey School of Architecture, the institution had evolved into a technological university, emphasizing a broad range of degrees and dedication to significant research and public service. Newark College of Engineering, stronger than ever, remained intact, but a new university name — New Jersey Institute of Technology — reflected the institution's expanded mission.

A broadened mission called for the creation of a residential campus and the opening of NJIT's first dormitory in 1980 began a period of steady growth that continues. Two new schools were established during the 1980s—the College of Science and Liberal Arts (1982) and the School of Industrial Management (1988). The Albert Dorman Honors College was established in 1994, and the newest school, the College of Computing Sciences, was created in 2001.



As technology changes all fields, those with science and technology backgrounds are positioned to lead. Among the CEOs of the S&P 500 companies, engineering is the single largest undergraduate degree and more than half of CEOs have undergraduate degrees in engineering, business management, science, math and computing.

THE GLOBAL EDGE

The diversity in NJIT's student body and faculty prepares graduates to understand and succeed in the global marketplace. NJIT was named among the world's top 500 universities in a study by the Institute of Higher Education, Shanghai Jiao Tong University.

DR. ROBERT A. ALTENKIRCH*President*

Dr. Robert A. Altenkirch, formerly vice president for research at Mississippi State University (MSU), joined NJIT as the university's seventh president in July 2002. During his tenure as MSU vice president for research, science and engineering, expenditures as reported to National Science Foundation (NSF) increased dramatically—75% from 1997 to 2001.

Prior to his appointment as vice president at MSU, Altenkirch served as professor of mechanical and materials engineering and dean of the College of Engineering and Architecture at Washington State University. From 1988 to 1995, he was professor of mechanical engineering and dean of the College of Engineering at MSU. He also served as professor and chair of mechanical engineering at the University of Kentucky.

In addition to the research program, his responsibilities encompassed congressional relations, intellectual property management and economic development. While dean of engineering at MSU, he led the effort to secure National Science Foundation funding for the establishment of the MSU NSF Engineering Research Center for Computational Field Simulation in 1990. Additionally, the Center was instrumental in helping the State of Mississippi attract a \$1 billion Nissan manufacturing plant.

Altenkirch holds a PhD from Purdue University, an MS from the University of California, Berkeley, and a BSME from Purdue, all in mechanical engineering. He is the author of over 50 publications and nearly 100 presentations in combustion and heat transfer and served as principal investigator for ten Space Shuttle experiments investigating the spread of fire in reduced gravity. He is a Fellow of the American Society of Mechanical Engineers.

DR. JOEL BLOOM*Vice President of
Academic and Student Services*

Dr. Joel Bloom has worked at NJIT since July 1990. In his current position, he is responsible for nine divisions of the university, including Physical Education and Athletics.

Dr. Bloom is also Dean of the Albert Dorman Honors College, which enrolls more than 525 students who are typically in the top 10 percent of their high school graduating class.

Prior to NJIT, Dr. Bloom spent seven years as assistant Commissioner in the New Jersey Department of Education. He is currently the Chair of the NASULGC Council of Chief Student Affairs Officers and the Newark Consortium Board for Pre-College Education.

Dr. Bloom earned his Bachelor's and Master's Degrees from Hunter College, and holds a Master's and Doctorate from Columbia University Teachers College.

**LENNY KAPLAN***Director of Athletics*

Since taking over as head of NJIT's division of physical education and athletics in August 2000, Lenny Kaplan was instrumental in establishing a sound NCAA Division II program, setting the stage for the reclassification into NCAA Division I.

Kaplan helped solidify and expand an NJIT program that was entering its fourth year in Division II when he arrived in Newark and in late 2002, after discussions with university President Dr. Robert A. Altenkirch and Vice President Dr. Joel Bloom, Kaplan began the task of steering NJIT's programs into Division I, a process that is set to reach fruition with full championship eligibility in 2009-10.

Along the way, NJIT has enhanced the athletics program, particularly in areas that will benefit the student-athletes directly.

The sports offerings have expanded to 19 varsity sports, and since 2004, NJIT has renovated its two main on-campus venues—Lubetkin Field and the Estelle and Zoom Fleisher Athletic Center. The school also signed a 10-year partnership to play its home baseball in the Bears and Eagles Riverfront Stadium and agreed to host basketball in the new home of the NHL's New Jersey Devils.

In 2005-06, NJIT's outstanding home facilities allowed it to host two ECAC Division II postseason championships—women's soccer in the fall and baseball in the spring.

Under Kaplan's leadership, many teams achieved regional and national Division II ranking. Success for several women's teams was unprecedented, with basketball, tennis and soccer all reaching postseason play for the first time.

Additionally, men's volleyball captured a 2007 divisional championship in the Eastern Intercollegiate Volleyball Association.

Before coming to NJIT, Lenny Kaplan served 11 years at Manhattan College, where he began as Manhattan's director of operations and then advanced to assistant athletics director.

Kaplan, a 1988 graduate of St. John's University with a degree in athletics administration, resides in Merrick, NY, with his wife, Nancy, and their sons, Michael and Joshua.

SPORTS MEDICINE

NJIT's sports medicine staff takes on a new look in 2007-08 with the addition of head athletic trainer Drew Van Dam, MS/ATC/L and assistant athletic trainer Amanda Albright, MS/ATC/L.



Drew Van Dam

They will work with team physicians Louis Rizio, MD, and Rutvik (Rudy) Patel, DO.

Van Dam, a New Jersey native who earned his bachelor's degree from Springfield (MA) College and his master's degree from Ohio University, comes to NJIT from the Atlanta Braves organization, where he was trainer with five different teams from 2001 to 2007.

He began with the Rookie level Gulf Coast Braves and moved up the organizational ladder to the Class AA Mississippi Braves, where he worked in 2006 and 2007.

In addition to his work with the Southern League Braves, he was the Braves' short-season athletic training coordinator, overseeing the athletic trainers for the organization's three short-season squads. He advised the trainers with the short-season teams and also provided medical information to each club, as well as to minor and major league officials with the Atlanta Braves.

In 2007, Van Dam was the Southern Division team trainer in the Southern League All-Star Game and he was honored as South Atlantic League Trainer of the Year in 2003.

In addition to his work in professional baseball, Van Dam has worked on the training staff at the College of New Jersey, as well as on the staff of the Hun School of Princeton and at Wellston (OH) High School.

Amanda Albright comes to NJIT from Bloomsburg (PA) University, where she advanced through the ranks from athletic



Amanda Albright

training graduate assistant, to part-time assistant athletic trainer and then to full-time assistant athletic trainer.

Albright, who earned her bachelor's degree from Slippery Rock (PA) University, received her master's degree from Bloomsburg.

In addition to her athletic training work, she was a Physical Therapy Aide in Slippery Rock and in Lock Haven, PA.

Dr. Rizio is a board certified orthopedic surgeon and is fellowship trained in the field of sports medicine. He is a graduate of Rutgers and after earning his medical degree from the UMDNJ/New Jersey Medical School, Dr. Rizio completed his orthopedic residency at Tufts University in Boston.

He then completed a sports medicine fellowship at the University of Miami. During his fellowship, he was assistant team physician of the Miami Dolphins, University of Miami Hurricanes, and the Florida Marlins.

Dr. Rizio, who specializes in sports-related injuries, practices at the New Jersey Sports Medicine Institute. Prior to starting his own practice, Dr. Rizio was the Chief of Sports Medicine at the NJ Medical School from 2000-2005. He currently is a professional (New Jersey Pride professional lacrosse), college, and high school team physician.

Dr. Patel practices in association with Dr. Rizio. A cum laude graduate of New York Institute of Technology, Dr. Patel earned his DO from the New York College of Osteopathic Medicine. He was chief resident in Family Medicine at the Robert Wood Johnson Medical School in New Brunswick, NJ, from 2003 to 2006.

ACADEMIC ENRICHMENT

NJIT's Center for Academic and Professional Enrichment (CAPE) took on a new facet with the hiring of Erika Rigby, whose position as Associate Director of CAPE was created for the specific purpose of supporting the academic and professional enrichment of NJIT's student-athletes.

She focuses on five key areas: academic support, career development, personal development, leadership and community service including the Student-Athlete Advisory Committee and CHAMPS Life Skills for NJIT's nearly 300 student-athletes in 19 intercollegiate sports.

Erika Rigby came to NJIT from Seton Hall University, where she was Associate Director of Academic Support Services for the Pirates athletic program from 2004 until taking her current post in the fall of 2007. At Seton Hall, she worked directly with men's basketball,

women's soccer, women's volleyball and swimming, assisting in class scheduling, tests and tutoring sessions.



Erika Rigby

The Jersey City, NJ, native is working with her fourth Division I program in a career that began in 1997 at Northern Arizona, where she was director of the Academic Enrichment Program.

She returned to her hometown, serving as Academic/Athletic Coordinator at Saint Peter's College, where she was responsible for the academic progress of over 300 student-athletes in 20 sports, from 1999 to 2004.

Rigby holds a bachelor's degree in psychology from Providence College, where she was an intercollegiate runner who earned Big East Conference all-academic honors.

She earned two master's degrees—one from Northern Arizona in educational leadership and one from Saint Peter's in administration and supervision—and she is pursuing her doctorate in higher education at Seton Hall.

A member of the National Association of Academic Advisors for Athletes, she is on the NCAA Initial Eligibility Waiver Committee.

She also worked in the office of former United States Senator Bill Bradley of New Jersey.

NJIT's Center for Academic and Professional Enrichment, headed by Dr. Marybeth Boger, is a resource available to all students within NJIT's Student Services Division. It provides academic support services and activities to enhance students' academic and professional development.

The CAPE works together with academic and administrative departments to help students develop the necessary analytical and problem-solving skills to become independent learners.

CAPE provides individual tutoring sessions, group tutorial sessions, student success workshops and testing accommodations.

New Jersey Institute of Technology athletics is on the move to the top level of college athletics—NCAA Division I.

The reclassification is well underway, with all of the programs that previously competed in Division II moving up to face Division I competition effective in 2006-07.

The NCAA has okayed NJIT to reclassify its entire athletics program to Division I, a four-year process that will bring all Highlander sports to full Division I status and championship eligibility in 2009-10.

Two sports—men's soccer and women's soccer—are paving the way on a faster NCAA track that allows lower division schools to elevate one sport in each gender to Division I in a process that takes two years to complete.

NJIT men's soccer became a full member of NCAA Division I at the start of the 2005 season, when the Highlanders arrived at championship eligibility. The men's journey to the top level began in 2003. NJIT women's soccer began a similar two-year process in 2005, with full Division I status and championship eligibility arriving in the 2007 season.

The larger process of advancing the entire program to Division I takes four years to complete and includes application, a detailed strategic plan and in-depth annual review of the institution's progress in moving toward its goal of complying with NCAA Division I rules and building a strong, broad-based athletics program.

NJIT's move to Division I has gone quickly since the November 2002 discussions among President Robert A. Altenkirch, Vice President Joel Bloom and Athletics Director Lenny Kaplan.

From there, came a proposal from Dr. Altenkirch to the Board of Trustees, which unanimously approved in February 2003 a plan to reclassify men's soccer to Division I. Little more than two years later, the NCAA approved NJIT's proposal to advance its entire program to Division I.

Along the way, scholarship and operating budgets have been enhanced, with expanded coaching staffs, increased scholarship dollars and upgraded facilities for competition and practice.

Upgrading athletics has been a priority for Dr. Altenkirch since he was selected as the seventh President of NJIT in May 2002.

"As NJIT continues to grow academically, and as a residential university, strengthening the athletics program through the transition to Division I will allow us to align the university athletically with our academic peers," said Altenkirch. "It will also enable us to recruit the best and brightest student-athletes, improve athletics facilities available to the entire NJIT community, gain regional and national visibility, and build strong linkages with students that will carry over to their days as alumni."

DIVISION I FIRSTS FOR NJIT

(11/13/06 vs. Morgan State)

FIRST BASKET

Aine O'Dwyer, layup (19:11)

FIRST REBOUND

Ali Baumlin (17:25 first half, defensive)

FIRST ASSIST

Ali Baumlin (16:18 first half, assisted Kelly Crowe)

FIRST STEAL

Kelly Crowe (19:40 first half)

FIRST BLOCKED SHOT

Lesley Hendricks (2:42 first half, blocked Dominisha Britton)

FIRST THREE-POINT BASKET

Katie Piekieski (14:47 second half)

FIRST LEAD

2-1, on O'Dwyer's layup (1:07 into the game)

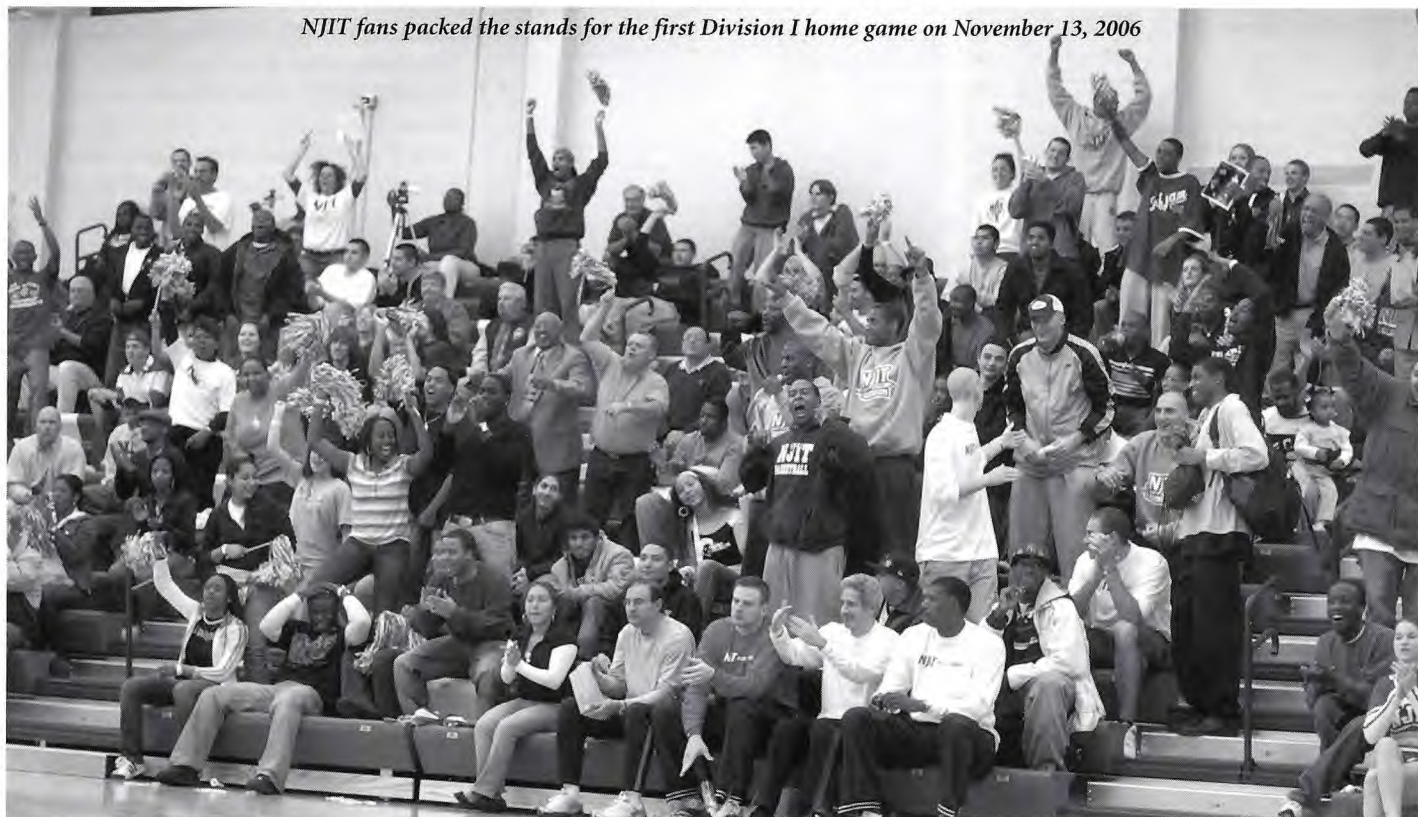
FIRST PLAYER TO REACH DOUBLE-FIGURE SCORING

Katie Piekieski (jumper with 15:31 remaining)

FIRST PLAYER TO REACH DOUBLE-FIGURE REBOUNDING

Ali Baumlin (1:04 remaining)

NJIT fans packed the stands for the first Division I home game on November 13, 2006



MARGARET McKEON

Head Coach

(First Season at NJIT, sixth season overall)



Margaret McKeon joined NJIT women's basketball as head coach in July 2007, bringing with her a deep passion for teaching basketball and a proven record of having transformed a struggling program into an NCAA Division I Tournament qualifier.

"What I love to do is teach," she said before her first season leading NJIT's fortunes. "I have a passion for the game and my goal is to help young women not only play the game, but grow as people. There are a lot of life lessons for them and for me."

McKeon's track record includes five NCAA Division I postseason tournament appearances in her years as an assistant coach and head coach. At NJIT, she will head a program that completed its first season of Division I competition in March 2007.

"I am very happy to be back in the tri-state area," said McKeon, a native of Queens, NY, where she was a star player in high school and college. "And I am very excited for this opportunity to build a Division I program from the ground up."

"The vision of Dr. (Robert) Altenkirch (NJIT President) and Dr. (Joel) Bloom (Vice President of Academic and Student Services) to move the entire athletic program forward is the reason I became interested in this job. NJIT already has a reputation for academic excellence and I look forward to working with Lenny Kaplan and his staff to develop a competitive Division I program that will attract the types of student-athletes who are eager to excel in the classroom, as well as on the court."

In five years as head coach at Boston University (1999-2004), McKeon transformed the Terriers from a team with five wins the season before her arrival to one that earned a spot in the NCAA Division I Tournament by her fourth season and was only a game short of repeating as America East Conference champion on the following year.

Before her years as head coach at BU, McKeon was assistant and then associate head coach at George Washington from 1995 to 1999, during which time GW posted a combined record of 93-31. In her four seasons on the staff, the Colonials went to the NCAAs three times, were ranked 10th in the nation and advanced to the Division I tournament's Elite Eight in 1996-97.

At Boston University, McKeon took over a program that was established, but had failed to achieve double-figure wins totals in each of its previous three seasons, including a 5-22 record the year before she was named head coach. In her first year (1999-00) the Terriers were 8-21, but they moved upward quickly, reaching the 17-win mark in her third season. That 17-11 record in 2001-02 was BU's first winning record in seven years.

In the 2002-03 NCAA season, the Terriers won the America East Conference championship and advanced to face UConn in the NCAAs.

The 2003-04 season was her biggest triumph at BU when the Terriers chalked up a 19-11 overall record and a second straight spot in the America East postseason championship game.

Overall, her Boston University teams won 70 games in five seasons, including a combined 52-37 record the last three seasons.

The steady overall improvement was apparent in conference play, as well. McKeon's teams went from 3-15 in conference her first year to 10-6 by her third year. Her America East Conference regular season record over her last three seasons at BU was 32-18, with postseason championship game appearances the last two seasons.

In her four seasons as an assistant coach at George Washington, the Colonials won three Atlantic 10 Conference championships, advancing to the NCAA Tournament all three times. GW ranked 10th nationally and reached the tournament's Elite Eight in 1996-97 and the Colonials advanced to the second round two other times, including 1995-96, when they finished 18th in the final national poll.

Earlier, at the University of Houston, she was part of a staff that recruited what one service rated as the 10th best in the nation in 1994. In her first year as a college coach, McKeon was on the staff for the 1991-92 Arizona State squad that reached the NCAAs. The Sun Devils' combined record in her two seasons there was 37-19, playing in the Pacific 10, one of the nation's elite women's basketball conferences.

McKeon is a 1991 graduate of St. John's University in Queens, NY, earning a BA in athletic administration.

A collegiate star at both St. John's and at Oklahoma, she was all-Big East for St. John's, setting a conference single-game assists record that still stands, with 18 against Georgetown on January 16, 1991. She also starred at Oklahoma, earning all-conference honorable mention.

Before college, she starred at Christ the King Regional High School in Queens, a school renowned for its powerhouse girls' basketball program that has produced such talent as WNBA players Sue Bird and Chamique Holdsclaw. Between high school and college, she coached the New York Liberty Belles AAU Basketball Club, the most successful girls AAU program in the Northeast.

A member of the Women's Basketball Coaches Association since 1991, McKeon was a speaker at two WBCA national conventions.

She resides in Woodside, NY.

SIOBHAN KILKENNY

Assistant Coach



An international player for her native Ireland and a former collegiate star stateside, Siobhan Kilkenny joined the New Jersey Institute of Technology women's basketball coaching staff for the 2005-06 season.

Kilkenny, a 2003 graduate of Manhattan College (bachelor of science degree in physical education), is a former member of the Irish Senior National women's basketball team and was part of her nation's national team program from 1994 to 2004.

She represented Ireland in the 2001 and 2004 Women's European Basketball Championships and was the 2003 Irish International Player of the Year.

While at Manhattan, she was named Most Valuable Player of the 2003 Metro Atlantic Athletic Conference Tournament after leading her team to the championship and an automatic berth in the NCAA Division I Tournament.

Also that year, she was an All-MAAC 2nd team honoree for the regular season and was also named to the All-Met (NY) 2nd team. A strong all-around player at shooting guard and small forward, Kilkenny averaged 12 points, 6 rebounds and 2.7 steals per game as a senior, placing her among the conference leaders in all three categories, including third place in steals.

She is fourth on Manhattan's all-time career steals list (202) and was named to the Big Apple Classic first team in 2001 and 2002.

Prior to accepting her position on the NJIT coaching staff, Kilkenny was playing professional women's basketball for the Pabellon Ourense (Spain) club team.

Prior to NJIT she gained extensive experience working at summer camps and also coached girls basketball with the Castlebar Rockets club team in her hometown and also in Westchester County, NY.

A member of the Women's Basketball Coaches Association and the American Alliance for Health, Physical Education, Recreation and Dance, Kilkenny is active in Metropolitan New York women's soccer and Gaelic football leagues.

She has teaching experience in schools in Westchester County, NY, as well as having done student teaching in Westchester and in the Riverdale section of the Bronx, NY.

She resides in South Amboy, NJ.

MARY KACIC

Assistant Coach



Mary Kacic joined the NJIT coaching staff in July 2007 after a year as interim assistant women's basketball coach at Division I Fordham in 2006-07.

She previously coached two years at Division II Dowling (2003 to 2005), as well as serving as a head coach in the renowned Liberty Belles girls AAU program in 2003.

She has also worked as a coach and counselor in camps conducted by Manhattan College, UConn, Siena College, Christ the King HS and Eastern Invitational.

She is certified as a strength and conditioning coach (CSCS) by the National Strength and Conditioning Association and is a certified basketball referee.

As a player, Kacic starred at Christ the King High, which ranked first in the nation by USA Today following her senior year (1998) and

captured the New York State Federation crown all each season from 1995 to 1998. She was all-tri-state (NY, NJ, CT), all-city and all-Queens as a senior.

Kacic went on to play Division I college ball at Manhattan, where she was a four-year member of the varsity and a two-year captain. She received the prestigious 2002 Metro Atlantic Athletic Conference/New York State Lottery Scholar-Athlete of the Year, an honor given to the top scholar-athlete among the MAAC's 10 women's basketball teams.

She completed her playing eligibility at Dowling in 2003, helping the team to the NCAA Division II tournament. Kacic earned all-conference and all-tournament honors, as well as all-region recognition from the Met (NY) Basketball Writers Association.

Kacic earned degrees from the two colleges she represented on the basketball court. She was a magna cum laude graduate of Manhattan, receiving her BS in exercise science in February 2003. In May 2004, she received her MBA in general management from Dowling.

She resides in Howard Beach, NY.

STUDENT MANAGERS

Saurabh Oberoi

Sayali Joshi

Jaya Dwivedi

Neha Sethi

Action from NJIT's first Division I game vs. Morgan State



NJIT All-Time Coaching Records

(Listed chronologically)

NAME	WIN	LOST	PCT.	SEASONS
<i>NCAA Division III era (10 seasons; 1986-87 to 1987-88; 1989-90 to 1996-97)</i>				
John Speiss	0	15	.000	1 (1986-87)
Dave DeNure	2	11	.154	1 (1987-88)
Bill Avant	0	12	.000	1 (1989-90)
Brenda Zabriskie-DeNure	44	64	.407	5 (1990-95)
Maureen O'Neil	16	5	.762	1 (1995-96)
Bill McColl	7	15	.318	1 (1996-97)
<i>NCAA Division II era (9 seasons; 1997-98 to 2005-06)</i>				
Kim Barnes Arico	16	37	.302	2 (1997-99)
Sharon Manning Beverly	30	51	.370	3 (1999-02)
Kim Bowen Lusk	63	50	.558	4 (2002-06)
<i>NCAA Division I era begins in 2006-07</i>				
Kim Bowen Lusk	4	25	.138	1 (2006-07)
Bowen Lusk total	67	75	.472	5 (2002-07)
All-Time Total	182	284	.391	20



NUMERICAL

No.	Name	Ht.	Pos.	Yr.	Hometown/High School
00	Taiwo Oyelola	5-11	F	So.	Roselle, NJ/Abraham Clark
3	Alison Miller	5-7	G	So.	Shelton, CT/St. Joseph
5	Adriana Johnson	5-4	G	Fr.	Tobyhanna, PA/Pocono Mountain West
10	Jackie McCaffrey	5-8	G	Jr.	Bronx, NY/The Masters School
14	Katie Piekieski	5-10	G	So.	Atco, NJ/Hammonton
15	Erika Velez	5-7	G	Sr.	Garnerville, NY/North Rockland
21	Keri Washington	5-8	G	Fr.	Ewing, NJ/The Pennington School
23	Colleen Vogel	5-8	G	So.	Emerson, NJ/Emerson
25	Jessica Gerald	5-8	G	Fr.	Woolwich Twp., NJ/Kingsway Regional
33	Jill Dickinson	5-8	G	Jr.	Milltown, NJ/Spotswood
34	Kathryn Wighton	6-4	F	So.	Warren, NJ/Rutgers Prep
50	Kehinde "Femi" Oyelola	5-11	F	So.	Roselle, NJ/Abraham Clark
55	Maya Al-Shingieti	6-1	F	Fr.	Vienna, VA/George C. Marshall

ALPHABETICAL

No.	Name	Ht.	Pos.	Yr.	Hometown/High School
55	Maya Al-Shingieti	6-1	F	Fr.	Vienna, VA/George C. Marshall
33	Jill Dickinson	5-8	G	Jr.	Milltown, NJ/Spotswood
25	Jessica Gerald	5-8	G	Fr.	Woolwich Twp., NJ/Kingsway Regional
5	Adriana Johnson	5-4	G	Fr.	Tobyhanna, PA/Pocono Mountain West
10	Jackie McCaffrey	5-8	G	Jr.	Bronx, NY/The Masters School
3	Alison Miller	5-7	G	So.	Shelton, CT/St. Joseph
50	Kehinde "Femi" Oyelola	5-11	F	So.	Roselle, NJ/Abraham Clark
00	Taiwo Oyelola	5-11	F	So.	Roselle, NJ/Abraham Clark
14	Katie Piekieski	5-10	G	So.	Atco, NJ/Hammonton
15	Erika Velez	5-7	G	Sr.	Garnerville, NY/North Rockland
23	Colleen Vogel	5-8	G	So.	Emerson, NJ/Emerson
21	Keri Washington	5-8	G	Fr.	Ewing, NJ/The Pennington School
34	Kathryn Wighton	6-4	F	So.	Warren, NJ/Rutgers Prep

Head Coach: Margaret McKeon (St. John's, '91) 1st season

Assistant Coaches: Siobhan Kilkenny, Mary Kacic

Captain: Katie Piekieski

Katie Piekieski





Taiwo Oyelola

A year ago, NJIT women's basketball experienced its first season of NCAA Division I competition, reclassifying after nine seasons in Division II.

With a new coach and six players who did not play on last year's team, 2007-08 looms as another transformative season for the Highlanders.

Margaret McKeon is the new head coach. A native of Queens, NY, and a former star player at St. John's, McKeon took the helm at NJIT in July 2007, having previously guided Boston University to unprecedented success in a five-year tenure as head coach there.

Taking over a BU program that had just five wins the season before she became head coach, McKeon led the Terriers to their first-ever NCAA postseason tournament bid in her fourth season (2002-03) and then came within a game of returning to the Big Dance in 2004.

Before that, she was a top assistant coach at high-level programs, including George Washington, which made the NAAs three times, advancing to the 1997 Elite Eight. Before GW, she coached at Arizona State and then Houston.

At NJIT, she takes over a program that won four games in 2006-07, its Division I debut season.

Nine of the 11 players who represented NJIT a season ago were first or second-year players. This year, only one player—senior Erika Velez—has more than two years collegiate experience. But all of her experience is at the Division II level, as she missed the first Division I season due to injury.

Six players who competed in the first Division I season are slated to do so again. And they are joined by four freshman and the veterans Velez and Jackie McCaffrey, who are back in action after missing last season.

"Our philosophy is basically that hard work pays off," said McKeon. "We teach fundamentals on a daily basis and encourage individual talents. A good program is built on team work, commitment and work ethic."



Katie Piekelski

On offense, NJIT, which averaged 52 points in a halfcourt-oriented offense last year, will have a new willingness to shoot early in the possession. "We try to play in an up-tempo style and give each player an opportunity to be a scoring threat," said McKeon.

A visit to preseason practice reveals a team that is responding to the new regime.

"They trust my experience," said the coach. "And they have begun to understand that the lessons they are learning on the basketball court will prepare them for life after basketball. That's all a coach can ask of her team."

If things go as planned, the regular Highlander playing rotation will include

nine or 10 players, none of whom will be asked to play much more than 30 minutes. With 12 players slated to begin the season in uniform, nearly everyone has a shot at making that rotation.

The top two returning scorers are junior guard Jill Dickinson (9.4 ppg) and sophomore guard Katie Piekelski (7.9 ppg). Dickinson was NJIT's top scorer in 2006-07 and Piekelski finished third. This season, they will have the opportunity to showcase their abilities.

Dickinson, who scored in double-figures 11 times last season, produced the team's best individual scoring game in each of her first two seasons. Her 31 points off the bench as a freshman were the most in the team's final Division II season and her 22 points at Lafayette last year were the most to start the Division I era.

Two other sophomore guards were regulars as freshmen. Alison Miller was in 25 games with one start and Colleen Vogel was in all 28 games, starting five.

Vogel will not play this season due to injury, but Miller is in the mix for 2007-08. "Alison will get playing time. She's strong, she works hard and she competes," said McKeon.

Two players who shared point guard during the program's successful last two Division II seasons (combined 35 wins, including a program-best 18 in 2004-05) are back after a year away.

Jackie McCaffrey, a junior, started 56 games and produced over 200 assists those two seasons before spending a year away from basketball. Velez, this year's only senior, was injured in the 10th game of 2005-06 and hasn't played since.

"Jackie has an opportunity to make an impact for us as a point guard or off guard," said McKeon. "She should make her presence known."

Sophomore twins Taiwo and Femi Oyelola appeared in 25 and 26 games, respectively, a year ago in reserve roles.

"For the twins, it's going to be a com-

ing out year," McKeon predicted. "Taiwo has the potential to be someone who can give us a double-double and Femi has the potential to be a low-post scorer and defender and she can be one of our leading rebounders."

Athletic wing players Jessica Gerald and Keri Washington, along with post player Maya Al-Shingieti will be counted on from the first day.

Underlining their athleticism on the basketball court, Gerald and Washington were high school track and field stars. Gerald was all-South Jersey and Washington was all-New Jersey prep in track and field. Washington was also an all-state soccer player.



Alison Miller



Kathryn Wighton

Gerald was an accomplished scorer (1,720 points), while Washington was an all-around contributor on teams that played in four straight state Prep A title games.

On the offensive end, Gerald combines the speed to score in the open floor with an explosive first step and both rookies have the ability to be among the team's top defenders. "Jessica has quick hands and quick feet," said McKeon.

Washington will produce defensive deflections and score on putbacks off of offensive rebounds. "Keri is someone who will get a lot of her points off her defense and rebounding," McKeon said. "A team needs someone like that."

Al-Shingieti is a mobile post player who will help with defense and rebounds. "Maya should be our best low post defender and shot blocker," said the coach. "She'll make her presence known inside."

Sophomore center Kathryn Wighton played in 22 games as a freshman. "Kathryn has the potential to be a shot blocker and she has a presence because of her size," said McKeon. "I'm expecting some big things for her."

Adriana Johnson, a quick freshman point guard with good court vision, is competing for playing time in that spot. "Adriana is a floor general," said the coach, "and will have an opportunity to play at point guard."

The 2007-08 schedule is full of exciting opportunities and challenges.

The Highlanders will host two home games in the newest major indoor sports arena in North America—the Prudential Center, the state-of-the-art downtown Newark home of the National Hockey League New Jersey Devils.

"The Rock" will be the site of January home games against Cornell (Jan. 15 at 6 pm) and against Chicago State (Jan. 26 at 3 pm).

The slate of opponents is impressive, too. In addition to the 14 foes back from

last year's schedule, there will be six new opponents, which will yield at least three and perhaps four new games against teams that won between 19 and 23 games apiece last year.

Three of those potential opponents will come in the Hawks Classic December 28 and 29 at Saint Joseph's (PA) in Philadelphia. NJIT's first opponent will be host Saint Joe's, a 19-game winner in 2006-07.

The next night, NJIT will face either Davidson (23 wins last year) or Auburn (21 wins) from the Southeastern Conference, which is likely the country's top women's basketball conference.

Cal State Bakersfield, a new Division I Independent a year behind NJIT in the Division I reclassifying process, won 23 games a year ago in Division II. NJIT and CSUB will meet at least once and could meet twice.

The teams will play on January 11 in a neutral site game at Texas-Pan American and they could meet again in the season-end Division I Independent tournament, also at UTPA (March 6 to 8).



Femi Oyelola

There's no question that these Highlanders are something of a blank slate. Only one player has more than two years of college experience, none have more than one year of Division I experience and four players will make their collegiate debuts.

Looking at the big picture, McKeon said: "It's a challenge we can meet. We will try to play mistake free and become a better team in each game."

#1 Katie PIEKIELSKI



*Sophomore
Guard
5-10
Atco, NJ/
Hammonton HS*

Team captain ... Last name is pronounced pe-KEL-skee ... she is set to be back in the regular playing rotation, as she was in her rookie season.

Margaret McKeon on Piekieski: "The best word to describe her is 'steady'. Katie is a well-rounded player—good in a lot of areas. She's a hard worker who has a drive and a passion to be good. She'll be a workhorse for us."

2006-07: Played in all 28 games (20 starts) and averaged 7.9 ppg (3rd on the team) ... reached double-figure scoring 10 times, including the first five games ... in NJIT's

first-ever Division I game, Piekieski notched a game-high 20 points vs. Morgan State (11/13). Added 9 rebounds vs. Morgan ... career-high 21 points vs. Wilmington (DE) in an 86-54 victory three games later (11/21) ... led the NJIT scorers five times ... a solid .737 (56-76) on foul shots and made 22 three-point baskets.

Prior to NJIT: 1,000-point career scorer. ... all-Group 3 South Jersey all-star. ... two-time Cape Atlantic League first-team ... McDonald's all-American nominee at Hammonton High for coach Tom Inzillo. ... AAU team was the Philadelphia Belles coached by Tony Plakis ... two-time all-league first team; all-group 3 South Jersey and all-South Jersey in softball ... member of the National Honor Society, graduating in the top 5% of her class (13th in a class of 340) and was named Camden County Best of the Class "Best All Around."

Personal: Katie Piekieski ... daughter of Rob and Kathy Piekieski. ... enrolled in NJIT's Albert Dorman Honors College majoring in biology and mathematics ... born 12/18/87 in Woodbury, NJ.

CAREER HIGHS

Points: 21 vs. Wilmington (DE) – 11/21/06

Rebounds: 9 vs. Morgan State – 11/13/06

Blocks: 3 at Wagner – 1/18/07

Assists: 3 at Utah Valley – 2/24/07

3 at Princeton – 12/6/06

Steals: 3 – three times

Minutes: 40 at Texas A&M Kingsville – 1/11/07

Yr	GP/GS	FG-FGA	%	3FG-A	%	FT-FA	%	Reb-Avg.	Pts-Avg.	A-Blk-Stl
2006-07	28-20	72-249	.289	22-114	.193	56-76	.737	88-3.1	222-7.9	31-13-22



#15 Erika VELEZ



Senior

Guard

5-7

Garnerville, NY/

North Rockland

HS

The team's only senior, she played three seasons before missing 2006-07 due to injury.

Margaret McKeon on Velez: "She is a great defender who will be one of our top perimeter defenders."

2006-07: Medical redshirt.

2005-06: Sustained a season-ending injury in the 10th game (1/7 at USP) ... started all 10 games before the injury. ... career-high 15 rebounds vs. Goldey-Beacom (12/3) sandwiched by 9 rebounds in the games immediately before and

immediately after her 15-board effort. ... 5 assists and 3 blocks with the 15 rebounds vs. Goldey-Beacom and 8 assists vs. Caldwell (11/29).

2004-05: Played in 28 games, starting 27 ... career-high 19 points at Bryant (12/29/04) and dished out 7 assists vs. Holy Family (12/4/04).

2003-04: Slowed by early-season stress fracture ... started 14 games and played in 23 ... averaged a team-best 3.5 assists ... 10 assists vs. USP (2/10) ... game-winning steal and free-throws in closing seconds of overtime at Caldwell (1/31).

Prior to NJIT: Team MVP, all-county and two-time all-league for coach Richard Korn playing in a strong program at North Rockland High ... team won a sectional championship her sophomore year ... played for the AAU Rockland Royals and coach Bob Salerno.

Personal: Erika Teresa Velez ... daughter of Joe Velez and Cynthia Soto ... majoring in chemical engineering. ... resides in Port St. Lucie, FL ... born 9/4/85 in Nyack, NY.

CAREER HIGHS

Points: 19 at Bryant – 12/29/04

Rebounds: 15 at Goldey-Beacom – 12/3/05

Assists: 10 vs. USP – 2/10/04

Blocks: 3 vs. Goldey-Beacom – 12/3/05

Steals: 6 at Georgian Court – 2/26/05

3-pointers: 2 vs. Nyack – 1/27/04

Minutes: 37 at Teikyo Post – 2/4/04

Yr	GP/GS	FG-FGA	%	3FG-A	%	FT-FA	%	Reb-Avg.	Pts-Avg.	A-Blk-Stl
2003-04	23/14	52-113	.460	7-22	.318	24-43	.558	96-4.2	135-5.9	81-4-43
2004-05	28/27	67-141	.475	5-9	.263	35-63	.556	124-4.4	174-6.2	99-14-62
2005-06	10/10	23-56	.411	1-6	.167	16-21	.762	58-5.8	63-6.3	34-10-24
2006-07	Did not play—injured									
Total	61/51	142-310	.458	13-37	.351	75-127	.591	278-4.6	372-6.1	214-28-129

#10 Jackie McCaffrey



*Junior
Guard
5-8
Bronx, NY/
The Masters
School*

Started 56 games her first two seasons with NJIT, but did not to play in 2006-07.

Margaret McKeon on McCaffrey: "Jackie is an all-around athlete and she's really a hard worker. She is quick and explosive with the ball and has a chance to make an impact at either point guard or off guard."

2006-07: Did not participate in basketball ... competed in track and field and swimming for NJIT.

2005-06: Started 26 games and led the team with 92 assists ... second with 53 steals—at least one steal in 23 of 26 games ... shared team scoring lead in back-to-

back games (16 vs. Goldey-Beacom, 1/28; 14 at Nyack, 1/31) ... six double-figure scoring games, all from 1/26 on ... shot 10-13 on free throws vs. Goldey-Beacom (1/28) and 9-10 at Dominican (2/7) ... 7-10 from the field at Nyack (1/31).

2004-05: Started all 30 games ... school-record 13 assists vs. Nyack on 2/25/05 ... season assists leader (110) ... averaged 32 minutes, 6.5 ppg and 3.9 rpg, while shooting 87 percent from the foul line.

Prior to NJIT: Won four league championships at the Masters School in Dobbs Ferry, NY, under coach Peggy Green ... three-time team MVP and two-year captain ... team was state independent runner-up her senior season ... also won a team championship in cross-country ... played AAU ball for the Westchester Lady Knicks coached by Larry DiNizo.

Personal: Jaclyn Brett McCaffrey ... daughter of Tom and Lisa McCaffrey ... enrolled in NJIT's Albert Dorman Honors College majoring in business/MBA ... born 1/8/86 in Yonkers, NY.



CAREER HIGHS

Points: 16 vs. Goldey-Beacom – 1/28/06; 16 vs. Georgian Court – 2/8/05

Rebounds: 9 vs. Dominican – 3/2/05

Blocks: 1 seven times

Assists: 13 vs. Nyack – 2/25/05 (school record)

Steals: 5 vs. Georgian Court – 2/8/05; 5 vs. Dominican – 1/21/06

Minutes: 40 three times

Yr	GP/GS	FG-FGA	%	3FG-A	%	FT-FA	%	Reb-Avg.	Pts-Avg.	A-Blk-Stl
2004-05	30-30	61-167	.365	9-30	.300	33-38	.868	50-1.7	194-6.5	110-7-59
2005-06	27-26	51-151	.338	7-25	.280	74-114	.649	78-2.9	183-6.8	92-2-53
Total	57-56	112-318	.352	16-55	.291	107-152	.704	128-2.2	377-6.6	202-9-112

#33 Jill DICKINSON



*Junior
Guard
5-8
Milltown, NJ/
Spotswood HS*

Tough competitor who, as a sophomore facing Division I competition, improved her output in nearly every category over her rookie season in Division II.

Margaret McKeon on Dickinson: "Jill has a quick release and can get off a shot from anywhere on the court. She has three-point range and she shoots well off the dribble."

2006-07: Team MVP and top scorer (9.4 ppg) ... one of two to start all 28 games ... reached double-figure scoring 11 times, including an NJIT season-best 22 at Lafayette (12/28) ... second on the team with 43 steals ... had two 9-rebound games—UMBC (11/26) and Princeton (12/6).

2005-06: Appeared in 25 games and was third with 8.1 ppg ... shot a team-best (.313, 36-115) from behind the arc ... had a 31-point outburst, which came in 29 minutes as a reserve vs. Post on 1/19 (8-16 FG, 5-12 3FG, 10-17 FT, 31 pts, 3 assts, 3 stls) ... CACC Rookie of the Week 1/23.

Prior to NJIT: 1,000-point scorer for coach Graham Peabody at Spotswood High ... all-Blue Division for four years ... Greater Middlesex Conference first-team as a senior ... Spotswood's 2005 Female Athlete of the Year ... MVP at Spotswood 2003-04, 2004-05 ... South Amboy Christmas Tournament MVP ... Athlete of the Week in the Star-Ledger and Home News Tribune ... all-Blue Division in softball ... played AAU for Hoops America and coach Rich Leary (New Jersey Demons).

Personal: Jill Lauren Dickinson ... daughter of Deborah and William Dickinson, Sr. ... business major ... sister, Beth, was a Division I player and is a former coach at Fordham and Georgetown ... born 9/11/87 in New Brunswick, NJ.

CAREER HIGHS

Points: 31 at Post (CT) – 1/19/06

Rebounds: 9 at Princeton – 12/6/06; 9 at UMBC – 11/26/06

Assists: 5 vs. Wilmington (DE) – 11/21/06

Blocks: 1 vs. Longwood – 2/17/07; 1 vs. North Florida – 11/17/06

Steals: 5 vs. Texas-Pan American – 2/3/07

3-pointers: 5 at Post (CT) – 1/19/06

Minutes: 40 vs. St. Francis (NY) – 12/22/06

Yr	GP/GS	FG-FGA	%	3FG-A	%	FT-FA	%	Reb-Avg.	Pts-Avg.	A-Blk-Stl
2005-06	25-0	65-201	.323	36-115	.313	37-63	.587	64-2.6	203-8.1	27-2-23
2006-07	28-28	86-234	.368	26-108	.241	64-86	.744	95-3.4	262-9.4	39-2-43
Total	53-28	151-435	.347	62-223	.278	101-149	.678	159-3.0	465-8.8	66-4-66

#00 Taiwo OYELOLA



*Sophomore
Forward
5-10
Roselle, NJ/
Abraham Clark
HS*

Name is pronounced tie-WO O-yay-LO-la ... Figures in the plans at both forward spots and looms as an important scorer and rebounder in coach Margaret McKeon's system.

Margaret McKeon on Taiwo Oyelola: "Taiwo is talented. She can put the ball on the floor in transition and she can score on the block or shoot out to three-point range. She could also be one of our leading rebounders."

2006-07: Played in 25 games ... career-high 13 points against Lafayette (12/28). Shot 11-13 at the foul line that night ... second on the team, shooting .746 from the free throw line (44-59). Went 8-for-8 at the line vs. Texas-Pan American (2/3)

Prior to NJIT: She and her twin sister, Kehinde, were four-sport standouts at Abraham Clark High in Roselle, NJ ... in basketball, Taiwo was second-team all-county and second-team all-conference for champions under coach Kimberly Kenny ... Played AAU for Roselle Angels coached by Keith Jefferson ... all-conference first team in tennis and all-Sky Conference in the Mountain Valley Conference playing softball. ... also took part in track and field.

Personal: Her heritage is Nigerian. ... Taiwo Abinbola Oyelola. ... Twin sister of teammate Kehinde and daughter of Alarape (mother) and Olaleye Oyelola (father) ... majoring in management. ... born 8/17/88 in Newark, NJ.



CAREER HIGHS

Points: 13 at Lafayette – 12/28/06
Rebounds: 9 at Princeton – 12/6/06
Assists: 2 vs. St. Francis (NY)—12/22/06
Blocks: 2 at UMBC – 11/26/06
Steals: 2 - three times
Minutes: 24 at Texas-Pan American – 1/13/07

Yr	GP/GS	FG-FGA	%	3FG-A	%	FT-FA	%	Reb-Avg.	Pts-Avg.	A-Blk-Stl
2006-07	25-0	23-95	.242	—	—	44-59	.746	78-3.1	90-3.6	10-9-15

#3 Alison MILLER



Sophomore
Guard
5-7
Shelton, CT/
St. Joseph HS

Hard-worker who is in the mix for playing time at guard.

Margaret McKeon on Miller: "She's hard-nosed and she likes to compete. She's also one of our strongest players physically. I expect her to play for us."

2006-07: Played in 25 games with one start as a freshman ... got her start at Princeton (12/6) and played a season-high 18 minutes ... her .500 field goal percentage (13-26) was the team's highest. Had four games in which she made every shot ... also shot well at the foul line (.727; 16-22).

Prior to NJIT: Earned three varsity letters playing for coach Joseph Cavallaro at St. Joseph HS in Trumbull, CT. ... a captain, she was named to the all-Fairfield County Interscholastic Athletic Conference team as a senior also made all-tournament teams at the St. Theresa, St. Mark & Notre Dame Appalachia tournaments ... AAU club team was the Connecticut Future Stars, where she was coached by Jessica Manetti. ... earned two varsity letters for volleyball. ... Principal's honor roll student from 2002 to 2006.

Personal: Alison Marie Miller ... Daughter of Bruce and Diane Miller ... biology major. ... born 4/23/88 in Bridgeport, CT.

CAREER HIGHS

Points: 6 at IPFW – 2/20/07; 6 vs. Wilmington (DE) – 11/21/06

Rebounds: 2 at South Dakota State – 2/8/07; 2 at Texas A&M-Kingsville – 1/11/07

Assists: 2 at IPFW – 2/20/07; 2 vs. Lehigh – 12/9/06

Steals: 2 at IPFW – 2/20/07

Minutes: 18 at Princeton – 12/6/06

Yr	GP/GS	FG-FGA	%	3FG-A	%	FT-FA	%	Reb-Avg.	Pts-Avg.	A-Blk-Stl
2006-07	25-1	13-26	.500	0-1	.000	16-22	.727	10-0.4	42-1.7	9-0-6

#23 Colleen VOGEL



Sophomore
Guard
5-8
Emerson, NJ/Emerson HS

Will not play this season due to injury.

2006-07: Played every game, leading the team from behind the arc (27-82; .329) and fourth in scoring (5.4 ppg) ... reached double-figure scoring seven times, including five straight (2/10 to 3/1) ... started the last five games ... career-high 15 points at Wagner (1/18) ... had six games in which she made every three-point try.

Prior to NJIT: Four-year starter for coach Brooke Renkens at Emerson HS, scoring 1,253 career points, including 107 three-pointers ... two-time first-team all-league and all-North Jersey. ... second-team all-suburban and third-team all-county. ... two-time team MVP. ... played AAU basketball for coach Rich Wejnert on the New Jersey Monarchs ... participated in track ... scholastic and academic honors included: National Honor Society and Who's Who Among America's High School Students. Also, National Youth Leadership Council (Washington, DC), Free Enterprise Award (Ramapo College) and Homer S. Pace Medal (Pace Business).

Personal: Colleen Mary Vogel. ... daughter of Artie and Noreen Vogel ... enrolled in NJIT's Albert Dorman Honors College majoring in business management ... her sister, Claire, played basketball at Division I Elon ... born 6/12/88 in Eastchester, NY.



CAREER HIGHS

Points: 15 at Wagner – 1/18/07

Rebounds: 6 vs. Norfolk State – 11/18/06

Assists: 3 vs. Wilmington (DE) – 11/21/06

Steals: 2 – three times

Blocks: 1 vs. Monmouth 1/23/07

Minutes: 31 vs. Longwood – 2/17/07; 31 at North Dakota State – 2/10/07

Yr	GP/GS	FG-FGA	%	3FG-A	%	FT-FA	%	Reb-Avg.	Pts-Avg.	A-Blk-Stl
2006-07	28-5	54-165	.327	27-82	.329	21-31	.677	44-1.6	156-5.6	21-1-20

#34 Kathryn WIGHTON



Sophomore
Center
6-4
Warren, NJ/Rutgers Prep

Last name is pronounced WY-ton ... the program's tallest player.

Margaret McKeon on Wighton: "I'm looking forward to coaching her. She can be a presence in the middle because of her size. She's a good face-up shooter and she has the potential to be a shot blocker. She will play."

2006-07: Played in 22 games (one start) and averaged 6.7 minutes ... career-high 12 rebounds vs. South Dakota State (2/8), a 25-win team ... her three two-block games all came after 2/3 ... achieved her career scoring high (5) vs. two of NJIT's strongest opponents (Utah Valley, 2/1; South Dakota State, 2/8)

Prior to NJIT: Helped Rutgers Prep of Somerset, NJ, win state, county and conference championships in 2003-04 under coach Mary Coyle Klinger. ... Played AAU basketball for the New Jersey Cardinals, coached by Kristen Somogyi, and the Philadelphia Belles, coached by Mike Flynn ... also played high school volleyball.

Personal: Kathryn Lee Wighton. ... daughter of John and Cris Wighton ... majoring in communications ... born 3/3/88 in New Brunswick, NJ.

CAREER HIGHS

Points: 5 at South Dakota State – 2/8/07; at Utah Valley—2/1/07

Rebounds: 12 at South Dakota State – 2/8/07

Blocks: 2 – three times

Assists: 1 – three times

Steals: 2 at South Dakota State – 2/8/07

Minutes: 21 at Utah Valley State – 2/24/07

Yr	GP/GS	FG-FGA	%	3FG-A	%	FT-FA	%	Reb-Avg.	Pts-Avg.	A-Blk-Stl
2006-07	22-1	14-38	.368	—	—	2-4	.500	39-1.8	30-1.4	3-12-5

#50 Kehinde "Femi" OYELOLA



*Sophomore
Forward
5-11
Roselle, NJ/Abraham Clark HS*

Known by the first name "Femi" and her name is pronounced FEM-me O-yay-LO-la

Margaret McKeon on Femi Oyelola: "She's talented on the block and has a lot of good low-post moves. She can score from the high post or the low post and we're looking for her to be one of our leading rebounders and low-post defenders."

2006-07: Appeared in 26 games, averaging 11 minutes ... scored in double figures twice (17 vs. Norfolk State, 11/18; 11 vs. Saint Peter's, 11/28). Also had 9 rebounds against Saint Peter's ...

Prior to NJIT: She and her twin sister, Taiwo, were four-sport standouts at Abraham Clark High in Roselle, NJ. ... Her basketball coach was Kimberly Kenny, who directed the team to the conference championship. ... Femi was conference Player of the Year, first- team all-county and first-team all-conference. ... Played AAU for the Roselle Angels, coached by Keith Jefferson ... in track and field, she was first-team all-county in the discus and javelin and was Thrower of the Year. ... second-team all-conference in tennis and also played softball.

Personal: Her heritage is Nigerian. ... Kehinde Olufemi Oyelola. ... Twin sister of teammate Taiwo and daughter of Alarape (mother) and Olaleye Oyelola (father) ... majoring in management. ... born 8/17/88 in Newark, NJ.

CAREER HIGHS

Points: 17 vs. Norfolk State – 11/18/06

Rebounds: 9 vs. St. Peter's – 11/28/06; 9 vs. Wilmington (DE) – 11/21/06

Blocks: 1 three times

Assists: 2 vs. Lehigh – 12/9/06

Steals: 3 vs. Lehigh – 12/9/06

Minutes: 21 vs. Monmouth 1/23/07; 21 vs. Norfolk State – 11/18/06

Yr	GP/GS	FG-FGA	%	3FG-A	%	FT-FA	%	Reb-Avg.	Pts-Avg.	A-Blk-Stl
2006-07	26-0	33-89	.371	—	—	37-56	.661	77-3.0	103-4.0	7-3-16



#5 Adriana JOHNSON



*Freshman
Guard
5-4
Tobyhanna, PA/Pocono Mountain
West HS*

Quick freshman point guard.

Margaret McKeon on Johnson: "She can handle the ball and she sees the floor well. She has a good basketball mind."

Prior to NJIT: All-time leading girl's scorer at Pocono Mountain West HS in Pocono Summit, PA (1,150 points in 105 games) ... career averages were 11 ppg, 4.2 rpg, 3.7 assists and 2.9 steals ... as a senior, averaged 16.5 ppg ... McDonald's All-America nominee ... Most Valuable Player of the Hoop Group Lehigh Valley Festival as a senior ... played on the Lehigh Valley West team in the Via All-Star Classic ... scored 15 in the Perryman & Keglovits All-Star game ... team captain her last three years in high school, she collected numerous MVP, all-conference and all-tournament honors throughout her high school playing career ... ranked 50th in a class of 482 with a cumulative grade point average of 3.70.

Personal: Adriana I. Johnson ... nickname is 'AJ' ... daughter of Marcela and Joe Johnson ... business management major ... born 2/27/89 in Scranton, PA.

#21 Keri WASHINGTON



*Freshman
Guard
5-8
Ewing, NJ/The Pennington School*

Exceptional all-around athlete who is focusing on basketball after being a Division I recruit in both basketball and soccer and all-state in three high school sports.

Margaret McKeon on Washington: "Keri can run all day and she's fast. She has the potential to be a very good defender and she could be a good rebounder at a guard spot."

Prior to NJIT: All-state in basketball, soccer and track ... prep all-state first team (Star-Ledger) in basketball as a senior playing for coach Dean Waters ... helped Pennington to four straight state Prep A titles games in basketball and four straight state soccer crowns. ... third-team basketball all-prep as a junior ... in track, she was 2nd-team all-prep at 400 meters and 2nd-team all-prep in soccer as a junior.

Personal: Keri Lynn Washington ... twin sister of Kori, who is a freshman women's soccer player at NJIT. Both twins were three-sport high school stars ... daughter of Mark and Myra Washington. Both parents graduated from College of New Jersey and father Mark played there before playing professional basketball in England ... business management major ... born 7/4/89 in New Brunswick, NJ.

#25 Jessica GERALD



*Freshman
Guard
5-8
Woolwich Township, NJ/
Kingsway Regional HS*

Talented athlete who will be making the freshman transition to college.

Margaret McKeon on Gerald: "She's one of our top athletes and she has an explosive first step. She can score in the open floor and drive the ball to the hole. She has quick hands and feet, so she could be one of our best defenders."

Prior to NJIT: All-time leading scorer for coach Bob Green at Kingsway Regional HS with 1,720 career points ... Kingsway-record 42 points against Winslow Township in January 2007 ... named as one of 25 seniors to watch statewide in preseason by the Star-Ledger ... all-state Group 3 second team as a senior (Star-Ledger) ... all-state Group 3 third team and all-South Jersey third team as a junior (Star-Ledger) ... third-leading scorer in South Jersey (22.1 ppg) as a junior ... AAU team was the South Jersey Blitz, coached by Tobin Wrice ... also excelled in track and field—as a senior, was second in the South Jersey Group 3 long jump and triple jump and lead runner in her school's 4 x 400 relay team, which was fifth in South Jersey.

Personal: Jessica Caryn Gerald ... daughter of David and Luvenia Gerald ... majoring in management ... born 3/26/89 in New York, NY.

#55 Maya AL-SHINGIETI



*Freshman
Forward
6-1
Vienna, VA/George C. Marshall HS*

Name is pronounced MY-a AL-shin-GET-ee ... will compete for playing time as a low-post player.

Margaret McKeon on Al-Shingieti: "Maya is a great kid and she has a big upside. She could be a shot blocker and our best low-post defender. She's mobile and she should make her presence known inside."

Prior to NJIT: Played the post on championship teams for coach Noel Klippenstein at George C. Marshall HS of Falls Church, VA, in the Washington, DC suburbs ... as a senior was 2nd-team all-Northern Region (Northern VA WBCA) and honorable mention AAA all-state (VirginiaPreps.com) and 1st-team all-district after averaging 12 points and 9 rebounds per game ... leading scorer (16) for her team in the Northern Virginia Classic all-star game ... as a junior she was 2nd-team all-Liberty District on a team that finished 22-6 and was district champion. She was all-tournament in the championship run ... junior averages were 7.5 ppg, 7 rpg and 2.5 blocks ... her AAU team, the Vogues, coached by Fred Priester made the 2006 national Sweet 16 and the 2005 US Junior Nationals championship ... did not begin playing basketball until the eighth grade.

Personal: Sumayya Abubaker Al-Shingieti ... daughter of Iman and Abubaker Al-Shingieti ... communications major ... older brother, Hasan, was team manager of the George Mason men's team that advanced to the 2006 Final Four ... born 2/1/89 in Northampton, MA.

NJIT Combined Team Statistics All games

RECORD:	OVERALL	HOME	AWAY	NEUTRAL
ALL GAMES.....	(4-24)	(2-10)	(1-13)	(1-1)
CONFERENCE.....	(0-0)	(0-0)	(0-0)	(0-0)
NON-CONFERENCE.....	(4-24)	(2-10)	(1-13)	(1-1)

## Player	GP-GS	Min--Avg	---TOTAL---		---3-PTS---		---REBOUNDS---		PF	FO	A	TO	Blk	Stl	Pts	Avg
			FG-FGA	Pct	3FG-FGA	Pct	FT-FTA	Pct								
33 DICKINSON, Jill....	28-28	889 31.8	86-234	.368	26-108	.241	64-86	.744	23	72	95	3.4	72	1	39	62
21 CROWE, Kelly.....	28-27	806 28.8	72-274	.263	24-89	.270	78-107	.729	37	90	127	4.5	62	1	55	109
14 PIEKIELSKI, Katie..	28-20	694 24.8	72-249	.289	22-114	.193	56-76	.737	27	61	88	3.1	64	4	31	74
10 O'DWYER, Aine.....	28-28	770 27.5	68-160	.425	0-4	.000	24-31	.774	35	96	131	4.7	39	0	71	74
23 VOGEL, Colleen.....	28-5	506 18.1	54-165	.327	27-82	.329	21-31	.677	10	34	44	1.6	39	0	21	51
25 HENDRICKS, Lesley..	24-3	373 15.5	39-108	.361	9-27	.333	9-18	.500	20	36	56	2.3	35	0	17	66
50 OYELOLA, Kehinde...	26-0	288 11.1	33-89	.371	0-0	.000	37-56	.661	30	47	77	3.0	33	0	7	24
00 OYELOLA, Taiwo....	25-0	298 11.9	23-95	.242	0-0	.000	44-59	.746	31	47	78	3.1	40	0	10	35
52 BAUMLIN, Ali.....	27-27	641 23.7	28-81	.346	0-0	.000	15-26	.577	52	62	114	4.2	53	0	21	39
32 MILLER, Alison....	25-1	187 7.5	13-26	.500	0-1	.000	16-22	.727	6	4	10	0.4	12	0	9	26
34 WIGHTON, Kathryn...	22-1	148 6.7	14-38	.368	0-0	.000	2-4	.500	16	23	39	1.8	33	0	3	13
TEAM.....									61	71	132	4.7	1		26	
Total.....	28	5600	502-1519	.330	108-425	.254	366-516	.709	348	643	991	35.4	483	6	284	599
Opponents.....	28	5600	686-1629	.421	134-426	.315	375-575	.652	409	742	1151	41.1	497	-	403	525

TEAM STATISTICS	NJIT	OPP	DATE	OPPONENT	W/L	SCORE	ATTEND
SCORING.....	1478	1881	11/13/06	MORGAN STATE	L	55-63	421
Points per game.....	52.8	67.2	*11/17/06	vs North Florida	L	46-52	89
Scoring margin.....	-14.4	-	*11/18/06	vs Norfolk State	W	91-70	76
FIELD GOALS-ATT.....	502-1519	686-1629	11/21/06	WILMINGTON	W	86-54	301
Field goal pct.....	.330	.421	11/26/06	at UMBC	L	51-78	234
3 POINT FG-ATT.....	108-425	134-426	11/28/06	SAINT PETER'S	L	61-67	344
3-point FG pct.....	.254	.315	12/02/06	at Winston-Salem State	L	41-72	2001
3-pt FG made per game..	3.9	4.8	12/06/06	at Princeton	L	51-75	355
FREE THROWS-ATT.....	366-516	375-575	12/9/06	LEHIGH	L	44-70	351
Free throw pct.....	.709	.652	12/12/06	at Fairleigh Dickinson	L	69-78	93
REBOUNDS.....	991	1151	12/22/06	ST.FRANCIS (NY)	L	36-59	112
Rebounds per game.....	35.4	41.1	12/28/06	at Lafayette	W	70-59	549
Rebounding margin.....	-5.7	-	01/04/07	at Cornell	L	42-65	132
ASSISTS.....	284	403	01/06/07	at Long Island	L	51-60	178
Assists per game.....	10.1	14.4	1/11/07	at Texas A&M-Kingsville	L	57-66	211
TURNOVERS.....	599	525	01-13-07	at Texas-Pan American	L	44-55	215
Turnovers per game.....	21.4	18.8	01/18/07	at Wagner	L	41-61	407
Turnover margin.....	-2.6	-	1/23/07	MONMOUTH	L	54-58	379
Assist/turnover ratio..	0.5	0.8	1/27/07	IPFW	L	70-81	345
STEALS.....	237	320	2/1/07	UTAH VALLEY STATE	L	48-79	200
Steals per game.....	8.5	11.4	2/3/07	TEXAS-PAN AMERICAN	L	57-70	179
BLOCKS.....	53	147	2/8/07	at South Dakota State	L	30-96	1309
Blocks per game.....	1.9	5.3	02/10/07	at North Dakota State	L	49-81	1010
WINNING STREAK.....	0	-	2/17/07	LONGWOOD	W	50-38	450
Home win streak.....	0	-	2/20/07	at IPFW	L	43-58	225
ATTENDANCE.....	3633	7316	2/24/07	at Utah Valley State	L	40-71	232
Home games-Avg/Game...	12-303	14-511	3/1/07	NORTH DAKOTA STATE	L	54-73	200
Neutral site-Avg/Game..	-	2-82	3/3/07	SOUTH DAKOTA STATE	L	47-72	351

SCORE BY PERIODS:	1st	2nd	Total
NJIT.....	655	823	- 1478
Opponents.....	881	1000	- 1881

The NJIT basketball teams will have home games this season in the downtown Newark Prudential Center and on-campus in the newly-renovated gymnasium of the Estelle and Zoom Fleisher Athletic Center.

“The Rock”, located about a mile from NJIT’s University Heights campus, opened in October 2007 as the new home of the National Hockey League New Jersey Devils. Highlander basketball will play four dates—two stand-alone men’s games and two men’s women’s doubleheaders—in the 18,500-seat state-of-the-art arena with dates in December 2007 and January 2008.

The Fleisher Athletic Center gym, also home to NJIT’s volleyball teams, underwent renovation in the summer of 2006. Included in the makeover was installation of a new floor and baskets and a repositioning of the main playing court. The gym also got new lighting, a new sound system and new scoreboards, along with entirely new seating for more than 1,000 spectators after the first phase of renovation. Future plans include the addition of more seating, which will nearly double the seating

capacity, while maintaining the up close-feel that puts spectators close to the action and contributes to the homecourt advantage.

The back bay ‘C gym’ can be sectioned off from the main competition floor, making the facility useful for intramurals, physical education classes and campus recreation time, while being able to host multiple simultaneous events.

The NJIT basketball teams also have full access to the other facilities in the Fleisher Center. These include the fitness area (containing computer-controlled biking equipment, Cybex resistance units and an indoor track), a free-weight room, four racquetball courts (which can be converted for squash), a martial arts center and an aerobics dance studio.

A six-lane swimming pool in Fleisher Athletic Center is home to the NJIT men’s and women’s swimming teams, while the two varsity tennis squads play on the four outdoor lighted tennis courts behind Fleisher Athletic Center. The NJIT Campus Center houses six regulation bowling lanes.

Lubetkin Field, with its entrance a few feet from the entrance of the Fleisher Athletic Center, is a first-class venue for college soccer. Outfitted with SprinTurf artificial grass in the summer of 2004, Lubetkin Field also includes lighting for night contests, bleacher seating for more than 1,000 spectators, a press box and scoreboard. The installation of the new surface, a walking track and new landscaping was done at a cost of \$1.2 million.

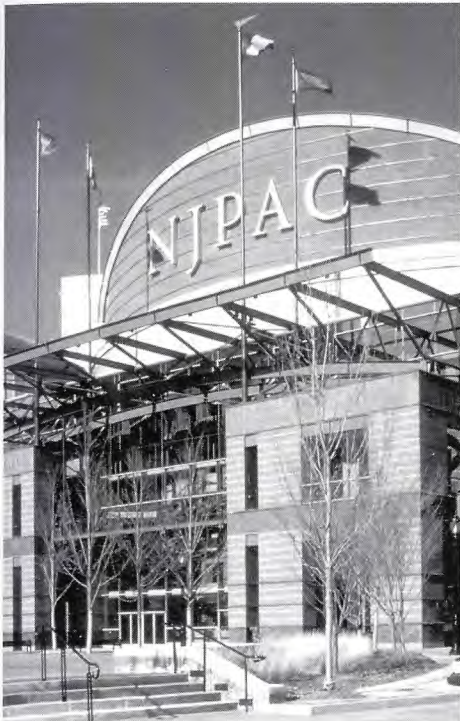
Bears and Eagles Riverfront Stadium, opened in 1999 at a cost of \$30 million and with a seating capacity of 6,200, became the home of NJIT baseball in 2004. In a joint December 2005 press conference, New York Yankees manager Joe Torre was a featured speaker as NJIT and the Newark Bears announced a 10-year partnership that cemented the downtown stadium as the home of all Highlanders home games for the decade to come.

NJIT, which offers a growing list of club sports, also has a robust intramural program, which makes use of the numerous athletic facilities.



NEWARK: THE RENAISSANCE CITY

NJIT is located in the heart of New Jersey's largest city. A major urban center, Newark is a city on the move. Some 30,000 undergraduate, graduate and professional students attend classes in University Heights at the city's four public institutions of higher learning: NJIT, Rutgers-Newark, the University of Medicine and Dentistry of New Jersey, and Essex County College.



Attractions in Newark's revitalized downtown include:

- . The Newark Museum
- . New Jersey Performing Arts Center
- . The Newark Public Library
- . Symphony Hall
- . Branch Brook Park
- . Art galleries, restaurants, and shopping
- . An urban architectural laboratory
- . Professional minor league baseball (Newark Bears)
- . New Jersey Devils Hockey and other events at the Prudential Center

Above Left: New Jersey Performing Arts Center, located minutes from campus, is quickly becoming one of the state's more popular entertainment venues.

Above Right: Aerial view of downtown Newark.

Right: The Newark Museum, a staple in the revitalization efforts in the downtown Newark area.



NEWARK: NEW JERSEY'S COLLEGE TOWN

Adjacent to NJIT is the Newark campus of Rutgers University.

NJIT and Rutgers enjoy an exceptionally close and productive consortial relationship within the thriving University Heights section of Newark. NJIT and Rutgers students have library privileges at both campuses. NJIT students may also enrich their educational experience by enrolling in Rutgers-Newark courses and in full degree programs in disciplines not offered at NJIT, such as art, music, geology and psychology.

Each year the two universities co-sponsor a common season of theatrical productions, as well as 'World Week,' a joint program of honors colloquia, and a variety of other cultural and social activities.

NEW JERSEY/NEW YORK METROPOLITAN REGION

The NJIT campus is in one of the nation's most exciting cultural and business regions. Advantages include:

- . Minutes from New Jersey Performing Arts Center, Liberty Science Center, Meadowlands Sports Complex, Manhattan and all of its attractions, Newport Center Mall, and Secaucus Outlet Center.
- . Discount tickets for Broadway shows, museums, concerts, and sporting events.
- . Weekend trips throughout the Northeastern United States: skiing, boating, swimming, hiking, and more.
- . The spectacular Jersey shore is less than one hour away.



PRUDENTIAL CENTER

The new home of the National Hockey League New Jersey Devils is going up in downtown Newark at the corner of Mulberry and Edison streets, about one mile from the NJIT's University Heights campus.

Opened in October 2007, 'The Rock' is set the centerpiece of the city's Downtown Core Redevelopment Project. In addition to the world's best hockey, it will be home to numerous entertainment and sporting events, including NJIT basketball. In December 2007 and January 2008, NJIT will host two stand-alone men's games and two men's/women's doubleheaders in North America's newest major arena.

The arena, with seating for 18,500 spectators, features a 4,800 square-foot exterior LED screen, as well as the latest in ice-surface technology and a gourmet restaurant overlooking the ice for Devils games. The building will contain 850,000 square feet of space, 9,000 tons of steel, eight million pounds of structural steel and 25,000 cubic yards of concrete.

RED BULL PARK

The Red Bulls of Major League Soccer and AEG New York broke ground in September 2006 for Red Bull Park, a 25,000-seat soccer stadium and a major component of the Harrison MetroCentre development, located across the Passaic River, about two miles from NJIT's campus.



The \$100 million 'soccer specific' stadium will feature a 360-degree European-style roof/canopy covering the majority of the seating. When completed in the summer of 2008, Red Bull Park will be the home of the MLS Red Bulls, international soccer and other events. AEG developed and operates 'soccer specific' stadiums in California and in Illinois.

The multi-billion dollar Harrison MetroCentre will feature three million square feet of office space; 3,500 residential units; 300,000 square feet of retail space and over 10,000 decked parking spaces when completed.

BEARS AND EAGLES RIVERFRONT STADIUM

Bears and Eagles Riverfront Stadium, the \$30 million state-of-the-art home of the professional baseball Newark Bears and since 2004 the home of NJIT Highlanders baseball, officially opened to the public on July 16, 1999. With a seating capacity of 6,200, "The Den" affords fans an up-close view of the



action. The ballpark also has 20 luxury suites, a picnic area, a party deck, a concert stage situated behind the outfield wall and a major league-caliber press box.

In December 2005, NJIT and the Bears held a joint press conference to herald a new partnership that includes a 10-year deal that extends Bears and Eagles Riverfront Stadium as the home of NJIT Highlanders baseball.



Points

1,497	Kelly Crowe	2003-07
1,322	Nevea Van Wright	1991-94, 95-96
1,165	Lindsey Reggo	2000-04
1,132	Jackie O'Connor	1997-2001
1,072	Selena Kershaw	2001-06
1,006	Wendy Gruenewald	1992-96
983	Nicole Ballou	1999-2003
978	SchrKya Massey	2001-2003
922	Sharon Kukal	1997-99
826	Liliana Alvarez	1990-94

Note: Massey scored 71 points in two seasons at Loyola (Md.) College for a career total of 1,049. Mullen scored 641 points in two seasons at Adelphi University for a career total of 1,262.

Scoring Average

(min. 30 games)

18.5	SchrKya Massey (978/53)	2001-03
18.1	Sharon Kukal (922/51)	1997-99
16.3	N. Van Wright (1322/81)	1991-94, 95-96
14.9	Kristie Simpson (553/37)	1995-97
13.2	Kelly Crowe (1497/113)	2003-07
12.7	Tamika Fogg (407/32)	1995-97

Rebounds

1,060	Wendy Gruenewald	1992-96
780	Selena Kershaw	1991-06
696	Liliana Alvarez	1990-94
678	Aine O'Dwyer	2003-07
573	Kate Duncan	2000-04
572	Dion McMillian	1986-88
542	Sharon Kukal	1997-99
508	Lauren Daley	1998-2000
423	Chevanese Samms	2000-03
	Nevea Van Wright	1991-94, 95-96

Rebound Average

(min. 30 games)

15.9	Dion McMillian (572/36)	1986-88
12.5	Wendy Gruenewald (1060/85)	1992-96
10.6	Sharon Kukal (542/51)	1997-99
9.5	Kristie Simpson (350/37)	1995-97
9.4	Lauren Daley (508/54)	1998-2000

Assists

396	Nicole Ballou	1999-2003
307	Kelly Crowe	2003-07
269	Aine O'Dwyer	2003-07
256	Nevea Van Wright	1991-94, 95-96
243	Jackie O'Connor	1997-2001
214	Erika Velez	2003-pres.
213	SchrKya Massey	2001-2003
202	Jackie McCaffrey	2004-pres.
167	Lindsey Reggo	2000-04
118	Wendy Gruenewald	1992-96

Blocks

102	Liliana Alvarez	1990-94
100	Selena Kershaw	2001-06
89	Wendy Gruenewald	1992-96
80	Lauren Daley	1998-2000
55	Chevanese Samms	2000-03
24	Tamika Fogg	1995-97
23	Kate Duncan	2000-04
	SchrKya Massey	2001-03
21	Nevea Van Wright	1991-94, 95-96
20	Nancy Belbo	1993-94

Steals

282	Kelly Crowe	2003-07
193	Nicole Ballou	1999-2003
171	Nevea Van Wright	1991-94, 95-96
168	Jackie O'Connor	1997-2001
160	SchrKya Massey	2001-03
155	Aine O'Dwyer	2003-07
133	Wendy Gruenewald	1992-96
129	Erika Velez	2003-pres.
119	Tamika Fogg	1995-97
112	Lindsey Reggo	2000-04
112	Jackie McCaffrey	2004-pres.

Three-Point Field Goals

222	Jackie O'Connor	1997-2001
164	Lindsey Reggo	2000-04
139	Nevea Van Wright	1991-94, 95-96
134	Kelly Crowe	2003-07
123	Nicole Ballou	1999-2003
72	Jackie Lupo	2002-2005
62	Jill Dickinson	2005-pres.
40	Tamara McNair	1995-98
38	Veronica Mullen	1998-2000
37	Natalie Rodriguez	1995-98

Games

113	Kelly Crowe	2003-07
113	Aine O'Dwyer	2003-07
112	Selena Kershaw	2001-06
109	Kate Duncan	2000-04
	Lindsey Reggo	2000-04
	Nicole Ballou	1999-2003
106	Jackie O'Connor	1997-2001
103	Jessica Vogel	2002-06
103	Odelia Pyron	1997-2001
92	Melsha Winchester	1997-2001

Field Goals

460	Kelly Crowe	2003-07
458	Nevea Van Wright	1991-94, 95-96
429	Selena Kershaw	2001-06
427	Wendy Gruenewald	1992-96
416	Lindsey Reggo	2000-04

Field-Goal Attempts

1,269	Nevea Van Wright	1991-94, 95-96
1,265	Lindsey Reggo	2000-04
1,132	Kelly Crowe	2003-pres.
1,121	Jackie O'Connor	1997-2001
1,116	Wendy Gruenewald	1992-96
1,064	Nicole Ballou	1999-2003

Field-Goal Percentage

(min. 30 games)

.490	Kristie Simpson (217-443)	1995-97
.456	Selena Kershaw (429-940)	2001-2006
.449	Sharon Kukal (335-746)	1997-99
.395	Lauren Daley (178-451)	1998-2000
.383	W. Gruenewald (427-1116)	1992-96
.372	Veronica Mullen (242-650)	1998-2000

Three-Point Field Goal Attempts

720	Jackie O'Connor	1997-2001
539	Lindsey Reggo	2000-04
430	Nicole Ballou	1999-03
411	Nevea Van Wright	1991-94, 95-96
151	Tamara McNair	1995-98

Three-Point Field Goal Percentage

(min. 30 made)

.361	N. Van Wright (139-411)	1991-94, 95-96
.348	Jackie Lupo (72-207)	2002-05
.349	Veronica Mullen (38-109)	1998-99
.308	Jackie O'Connor (222-720)	1997-2001
.304	Lindsey Reggo (164-539)	2000-pres.

Free Throws Made

443	Kelly Crowe	2003-07
269	SchrKya Massey	2001-03
267	Nevea Van Wright	1991-94, 95-96
252	Sharon Kukal	1997-99
206	Selena Kershaw	2001-06
204	Nicole Ballou	1999-2003

Free-Throw Attempts

659	Kelly Crowe	2003-07
406	Nevea Van Wright	1991-94, 95-96
388	Selena Kershaw	2001-06
365	Sharon Kukal	1997-99
364	SchrKya Massey	2001-03
293	Nicole Ballou	1999-2003

Free-Throw Percentage

(min. 100 made)

.739	SchrKya Massey (269-364)	2001-03
.704	Jackie McCaffrey (107-152)	2004-pres.
.702	Jackie O'Connor (174-248)	1997-2001
.696	Nicole Ballou (204-293)	1999-pres.
.690	Sharon Kukal (252-365)	1997-99
.678	Jill Dickinson (101-149)	2005-pres.
.672	Kelly Crowe (443-659)	2003-07
.658	N. Van Wright (267-406)	1991-94, 95-96

Points

539	Schrkya Massey	2001-02
509	Sharon Kukal	1997-98
482	Kelly Crowe	2004-05
439	Schrkya Massey	2002-03
413	Sharon Kukal	1998-99
409	Nevea Van Wright	1993-94
405	Kelly Crowe	2005-06
379	Nevea Van Wright	1992-93
375	Lindsey Reggo	2002-03
374	Kristie Simpson	1994-95

Scoring Average*(min. 14 games)*

21.2	Sharon Kukal	1997-98
20.7	Schrkya Massey	2001-02
19.5	Nevea Van Wright	1994-95
17.2	Nevea Van Wright	1993-94
16.3	Kristie Simpson	1994-95

Rebounds

316	Dion McMillian	1986-87
314	Wendy Gruenewald	1992-93
309	Sharon Kukal	1998-99
284	Lauren Daley	1999-2000
270	Wendy Gruenewald	1994-95
256	Dion McMillian	1987-88
246	Wendy Gruenewald	1993-94
241	Kristine Simpson	1994-95
236	Merna Maloon	1997-98
230	Wendy Gruenewald	1995-96

Rebound Average*(min. 14 games)*

16.6	Dion McMillian	1986-87
15.1	Dion McMillian	1987-88
14.3	Wendy Gruenewald	1992-93
12.9	Wendy Gruenewald	1993-94
11.7	Wendy Gruenewald	1994-95

Assists

120	Nicole Ballou	2002-03
113	Schrkya Massey	2001-02
111	Nancy Belbo	1993-94
110	Jackie McCaffrey	2004-05
102	Nicole Ballou	2001-02
101	Nicole Ballou	2000-01
100	Schrkya Massey	2002-03
99	Erika Velez	2004-05
99	Keri Ann Gavin	1998-99
97	Kelly Crowe	2004-05

Blocks

66	Liliana Alvarez	1992-93
49	Lauren Daley	1999-2000
36	Liliana Alvarez	1993-94
34	Selena Kershaw	2001-02
31	Lauren Daley	1998-99
30	Chevanese Samms	2000-01
25	Wendy Gruenewald	1995-96

*Kelly Crowe, NJIT's career scoring leader*

23	Selena Kershaw	2004-05
22	Selena Kershaw	2005-06
20	Nancy Belbo	1993-94
	Wendy Gruenewald	1992-93

Steals

94	Kelly Crowe	2003-04
88	Schrkya Massey	2001-02
76	Nevea Van Wright	1993-94
72	Schrkya Massey	2002-03
71	Brenda Rodriguez	1994-95
70	Kelly Crowe	2004-05
65	Tamara McNair	1996-97
	Tamika Fogg	1995-96
	Lauren Battista	1994-95
	Nancy Belbo	1993-94
	Liliana Alvarez	1992-93

Three-Point Field Goals

68	Jackie O'Connor	2000-01
58	Lindsey Reggo	2002-03
	Jackie O'Connor	1999-2000
57	Nevea Van Wright	1993-94
56	Jackie O'Connor	1998-99
47	Nicole Ballou	2001-02

45	Kelly Crowe	2004-05
43	Lindsey Reggo	2003-04
40	Jackie O'Connor	1997-98
39	Jackie Lupo	2003-04

Games

30	Kelly Crowe	2004-05
	Selena Kershaw	2004-05
	Aine O'Dwyer	2004-05
	Jackie McCaffrey	2004-05
	Lisa Neira	2004-05
	Jackie Lupo	2004-05

Field Goals

200	Schrkya Massey	2001-02
184	Sharon Kukal	1997-98
154	Schrkya Massey	2002-03

Field-Goal Attempts

506	Schrkya Massey	2001-02
446	Schrkya Massey	2002-03
414	Sharon Kukal	1997-98

Field-Goal Percentage*(min. 3 made per game)*

.537	Emese Gyuricza	2005-06
.480	Selena Kershaw	2001-02
.476	Kristie Simpson	1994-95

Three-Point Field Goal Attempts

230	Jackie O'Connor	2000-01
175	Lindsey Reggo	2002-03
173	Jackie O'Connor	1999-2000

Three-Point Field Goal Percentage*(min. 20 made)*

.535	Veronica Mullen	1999-2000
.393	Nevea Van Wright	1993-94
.371	Nicole Ballou	1999-2000

Free Throws Made

141	Kelly Crowe	2004-05
141	Sharon Kukal	1997-98
138	Schrkya Massey	2001-02

Free-Throw Attempts

204	Sharon Kukal	1997-98
199	Kelly Crowe	2005-06
195	Kelly Crowe	2004-05
189	Schrkya Massey	2001-02

Free-Throw Percentage*(min. 35 made)*

.749	Schrkya Massey	2002-03
.744	Jill Dickinson (64-86)	2006-07
.737	Nevea Van Wright	1995-96
.730	Schrkya Massey	2001-02
.729	Jackie O'Connor	2000-01

INDIVIDUAL SINGLE-GAME RECORDS

Points

35	Sharon Kukal vs. Queens	1/28/98
34	SchrKya Massey vs. Nyack	1/23/02
34	Nevea Van Wright vs. Mt. St. Vincent	12/10/93

Rebounds

25	Dion McMillian vs. Bloomfield	1/30/87
25	Wendy Gruenewald vs. St. Elizabeth	12/3/92
23	Dion McMillian vs. Drew	11/22/86

Assists

13	Jackie McCaffrey vs. Nyack	2/25/05
12	Nicole Ballou vs. Felician	1/15/02
11	Tamara McNair vs. St. Elizabeth	2/5/97

Blocks

7	Liliana Alvarez vs. Mount St. Mary	1/23/93
---	------------------------------------	---------

Steals

10	Kelly Crowe vs. Post	12/7/04
10	Tamika Fogg vs. Yeshiva	2/24/96
10	Kristie Simpson vs. St. Joseph's	2/19/96
10	Nevea Van Wright vs. Medgar Evers	2/16/94

Field Goals

13	Nevea Van Wright vs. Mt. St. Vincent	12/10/93
----	--------------------------------------	----------

Field-Goal Attempts

29	SchrKya Massey vs. Holy Family	2/2/02
29	Nevea Van Wright vs. St. Elizabeth	1/29/94

Three-Pointers

7	Nevea Van Wright vs. New York Maritime	2/19/94
---	--	---------

Three-Point Attempts

19	Jackie O'Connor vs. Goldey-Beacom	2/3/01
----	-----------------------------------	--------

Most 3FGs without missing

5-5	Nevea Van Wright vs. Mount St. Mary	12/4/93
-----	-------------------------------------	---------

Free-Throws Made

16	Tamika Fogg vs. John Jay	12/7/96
----	--------------------------	---------

Free-Throw Attempts

27	Tamika Fogg vs. John Jay	12/7/96
----	--------------------------	---------

Most FTs without missing

12-12	Odelia Pyron vs. Queens (NY)	12/11/99
-------	------------------------------	----------

Minutes

48	Kelly Crowe at Teikyo Post	2/4/04
----	----------------------------	--------

Triple Doubles

Lauren Battista vs. Old Westbury (10 points, 11 rebounds, 11 assists)	1/28/95
Kristie Simpson vs. St. Joseph's (22 points, 11 rebounds, 10 steals)	2/19/96

TEAM SINGLE-GAME RECORDS

Most Points	97 at Teikyo Post (94) (20T)....	2/4/04
Most Points, Regulation	92 vs. Yeshiva (12).....	2/24/96
Least Points	17 vs. Drew (55).....	1990-91
Most Points Allowed	122 vs. Saint Rose	11/15/97
Least Points Allowed	12 vs. Yeshiva.....	2/24/96
	vs. NY Maritime.....	2/19/94
Highest Victory Margin	80 vs. Yeshiva (92-12).....	2/24/96
Highest Losing Margin	95 vs. Saint Rose (27-122) ..	11/15/97
Most Field Goals	41 vs. Baruch	2/12/96
Most Field-Goal Attempts	92 vs. York (NY)	1/10/96
Most Three-Pointers	11 vs. Felician	1/15/02
	vs. Goldey-Beacom	2/3/01
Most Three-Point Attempts	45 vs. Goldey-Beacom	2/3/01
Best Perfect Game (3FG)	6-6 vs. Mount St. Mary	12/4/93
Most Free-Throws Made	37 vs. Norfolk State (37-47)...	11/18/06
Most Free-Throw Attempts	51 at Lafayette (35-51).....	12/28/06
Best Perfect Game (FT)	12-12 vs. Philadelphia Sciences	12/22/01
Most Rebounds	71 vs. John Jay	12/7/96
Most Assists	29 vs. NYIT	1/22/00
Most Steals	37 vs. Bard	2/18/96
Most Blocked Shots	14 vs. Baruch	2/12/96
Most Turnovers	40 at Texas-Pan American	1/13/07
Most Turnovers Forced	48 s. Bard	2/19/96
Most Fouls	31 at Nyack	11/25/03

TEAM SINGLE-SEASON RECORDS

Most Games	30	2004-05
Most Wins	18	2004-05
Best Winning Percentage	762	1994-95 (16-5)
Most Losses	24	2006-07
Most Consecutive Wins	7	1995-96
Most Points	2,013	2002-03
Highest Scoring Average	67.9	2001-02
Least Points	555	1986-87
Most Points Allowed	1,924	2000-01
Least Points Allowed	1,054	1987-88
Lowest Scoring Defense	52.3	1992-93
Highest Scoring Margin	+4.5	2005-06
Most Rebounds	1,251	2002-03
Highest Rebound Average	52.2	1992-93
Highest Rebounding Margin	+9.3	1994-95
Most Field Goals	744	2004-05
Most Field-Goal Attempts	1,855	2002-03
Highest Field-Goal Percentage	408	2004-05
Most Three-Pointers	144	2003-04
Most Three-Point Attempts	562	2000-01
Highest Three-Point Percentage	370	1993-94
Most Free-Throws Made	419	2004-05
Most Free-Throw Attempts	674	2005-06
Highest Free-Throw Percentage	709	2006-07 (366-516)
Most Assists	503	2004-05
Most Steals	337	2004-05
Most Blocked Shots	105	1992-93
Most Turnovers	647	1998-99
Most Turnovers Forced	637	2004-05
Most Fouls	593	2002-03

CONFERENCE CHAMPIONSHIPS

Independent Athletic Conference

1996 (Tournament)

ALL-CONFERENCE

Women's Intercollegiate Athletic Conference

1987-88	Dion McMillian Sandy Worley (2nd)
1989-90	Tywana Garner (2nd)
1990-91	Liliana Alvarez
1991-92	Nevea Van Wright (HM)
1992-93	Nevea Van Wright
1993-94	Kristie Simpson Laura Battista (2nd) Wendy Gruenewald (2nd)
1995-96	Nevea Van Wright Wendy Gruenewald Kristie Simpson (2nd)
1996-97	Tamika Fogg Tamara McNair (2nd)
New York Collegiate Athletic Conference	
1997-98	Sharon Kukal (2nd)
1998-99	Sharon Kukal
Central Atlantic Collegiate Conference	
2001-02	SchrKya Massey
2002-03	SchrKya Massey
2004-05	Kelly Crowe (2nd and All-Tournament), Selena Kershaw (3rd)
2005-06	Kelly Crowe (3rd), Selena Kershaw (3rd)

**NCAA DIVISION I INDEPENDENT
ALL ACADEMIC**

2006-07	Ali Baumlin, Kelly Crowe, Aine O'Dwyer
---------	--

**CONFERENCE ACADEMIC
PLAYER OF THE YEAR**

New York Collegiate Athletic Conference

1999-2000	Lauren Daley
-----------	--------------

ALL-JERSEY 9 ASSOCIATION

1992-93	Nevea Van Wright
1993-94	Wendy Gruenewald

NJCBCA PLAYER OF THE YEAR

1998-99	Sharon Kukal
---------	--------------

ALL-NJCBCA

1995-96	Wendy Gruenewald
1997-98	Sharon Kukal
1998-99	Sharon Kukal

ALL-MET WRITERS

1998-99	Sharon Kukal
2002-03	SchrKya Massey (2nd)
2003-04	Kelly Crowe (2nd)
2004-05	Kelly Crowe (1st)
2005-06	Kelly Crowe (1st)

ALL-TIME TEAM MVPS

1986-87
1987-88Dion McMillian
1988-89no team
1989-90Tywana Garner
1990-91Liliana Alvarez
1991-92Nevea Van Wright
1992-93Nevea Van Wright
1993-94Nevea Van Wright
1994-95Wendy Gruenewald
1995-96Nevea Van Wright
1996-97Tamika Fogg
1997-98Sharon Kukal
1998-99Sharon Kukal
1999-2000Lauren Daley
2000-01Jackie O'Connor
2001-02SchrKya Massey
2002-03Nicole Ballou, SchrKya Massey
2003-04Kelly Crowe
2004-05Kelly Crowe
2005-06Kelly Crowe, Selena Kershaw
2006-07Jill Dickinson

ALL-TIME CAPTAINS

1986-87Tracey Malinowski, Dion McMillian
1987-88Dion McMillian
1988-89no team
1989-90
1990-91
1991-92
1992-93
1993-94
1994-95Lauren Battista, Wendy Gruenewald
1995-96
1996-97
1997-98
1998-99Sharon Kukal
1999-2000Lauren Daley, Jackie O'Connor
2000-01Jackie O'Connor, Odella Pyron
2001-02Nicole Ballou, Chevanese Samms
2002-03Nicole Ballou, SchrKya Massey
2003-04Kate Duncan, Lindsey Reggo
2004-05Kelly Crowe, Selena Kershaw
2005-06Kelly Crowe, Selena Kershaw
2006-07Kelly Crowe, Aine O'Dwyer

1986-87 (0-15)

11/22	at Drew	L	32-65
11/23	vs. Johns Hopkins	L	37-80
12/2	ST. ELIZABETH	L	40-73
12/4	at Upsala	L	47-57
12/10	at FDU-Madison	L	21-86
12/12	at St. Thomas Aquinas	L	24-76
12/13	vs. Old Westbury	L	36-71
12/18	OLD WESTBURY	L	51-64
1/7	at William Paterson	L	24-73
1/30	at Bloomfield	L	48-66
1/27	at Old Westbury	L	23-75
	at Georgian Court	L	18-81
2/3	RUTGERS-NEWARK	L	36-103
2/9	DOMINICAN (NY)	L	47-76
2/11	at St. Elizabeth	L	45-71

* WIAC (0-3)

Coach: John Speiss

1987-88 (2-11)

	Greensboro	L	33-62
	St. Elizabeth	L	32-53
	Bloomfield	L	29-85
	FDU-Madison	L	31-70
	Vassar	L	52-54
	Upsala	L	56-79
	Nazareth	L	43-103
	Notre Dame College	L	36-52
1/30	at Caldwell	L	70-81
	Drew	L	34-53
2/10	N.Y. MARITIME	W	47-31
	Bloomfield	L	37-85
	VASSAR	W	62-59

* WIAC ()

Coach: Dave DeNure

1988-89

No Team

1989-90 (0-12)

1/8	at FDU-Madison		
1/13	FDU-MADISON		
1/20	at Mt. St. Vincent		
1/23	at MT. ST. MARY'S		
1/27	ST. ELIZABETH		
1/29	at Bloomfield		
2/5	at Caldwell		
2/7	at Drew		
2/8	BLOOMFIELD		
2/16	at Mt. St. Mary's		
2/17	at Upsala		
2/20	at St. Elizabeth		

* WIAC ()

Coach: Bill Avant

1990-91 (3-17)

	Yeshiva	W	40-23
	Mt. St. Vincent	L	24-68
	St. Elizabeth	L	25-68
	Drew	L	17-55
	Caldwell	L	20-77
	Centenary	L	33-66
	FDU-Madison	L	30-64
	Mt. St. Mary	L	22-65
	Upsala	L	24-70
	Hunter	L	27-77
	Caldwell	L	21-74
	N.Y. Maritime	W	39-24
	St. Elizabeth	L	20-67
	Bloomfield	L	31-104
	Mt. St. Mary	L	28-76
	N.Y. Maritime	L	61-69
	FDU-Madison	L	38-71
	Upsala	L	43-90
	Yeshiva	W	54-32
	Centenary	L	40-60

Coach: Brenda Zabriskie

1991-92 (8-14)

11/22	vs. Medgar-Evers	W	39-37
11/23	vs. Mt. St. Vincent	L	39-64
11/26	MT. ST. VINCENT	L	27-38
12/5	ST. ELIZABETH*	L	52-86
12/9	at FDU-Madison*	L	35-83
12/11	YESHIVA	W	63-24
12/12	HUNTER	L	53-76
1/13	MT. ST. MARY'S*	L	54-79
1/22	N.Y. MARITIME	W	80-18

1/24	at St. Elizabeth*	L	59-71
1/30	NEW ROCHELLE	W	71-40
1/31	YORK (NY)	W	62-51
2/3	UPSALA*	L	62-95
2/4	FDU-MADISON*	L	38-72
2/10	at York (NY)	W	67-58
2/13	at Upsala*	L	54-84
2/15	CENTENARY	L	64-66
2/17	at Yeshiva	W	69-35
2/19	Centenary*	L	55-81
2/22	at Drew	L	50-66
	at New York Maritime	W	53-25
2/26	at Mt. St. Mary's*	L	35-64

* WIAC ()

Coach: Brenda Zabriskie

1992-93 (8-14)

11/21	YORK	W	52-50
11/24	at Upsala*	L	49-81
11/30	OLD WESTBURY	L	56-65
12/3	ST. ELIZABETH*	L	43-53
12/5	DREW	L	59-67
12/7	FDU-MADISON*	L	46-71
12/8	at New Rochelle	W	79-37
1/11	CCNY	W	62-43
1/13	at York	L	37-39
1/16	MT. ST. VINCENT**	W	71-45
1/18	at Centenary*	L	52-74
1/22	at St. Elizabeth* (ot)	L	57-64
1/23	at Mt. St. Mary*	L	41-67
1/26	at Stevens Tech**	W	57-28
1/30	at N.Y. Maritime**	W	64-16
2/1	UPSALA*	L	57-62
2/2	at FDU-Madison*	L	45-77
2/9	STEVENS TECH**	W	71-25
2/6	at Mt. St. Vincent**	L	37-39
2/15	at Yeshiva**	W	62-17
2/17	CENTENARY*	L	38-65
2/23	MT. ST. MARY*	L	47-63

* WIAC (0-10)

** IAC (5-1)

Coach: Brenda Zabriskie

1993-94 (13-8)

11/23	UPSALA*	L	51-93
11/29	DREW	W	63-62
12/1	at St. Elizabeth*	L	53-59
12/4	at Mt. St. Mary*	L	58-76
12/6	at FDU-Madison*	L	48-60
12/10	vs. Medgar-Evers	W	68-48
12/11	vs. Baruch	W	62-54
1/10	at CCNY	W	53-52
1/15	MT. ST. VINCENT	W	58-56
1/22	at Staten Island	W	67-55
1/25	BARUCH	W	57-53
1/27	FDU-MADISON*	L	57-68
1/29	ST. ELIZABETH*	W	65-56
2/7	CENTENARY*	W	84-59
2/14	at Upsala*	L	53-71
2/16	at Medgar-Evers	L	73-86
2/19	N.Y. MARITIME	W	40-12
2/22	at Manhattanville	L	45-48
2/25	N.Y. MARITIME+	W	67-12
2/26	MT. ST. VINCENT+	W	60-49
2/28	at Centenary*	W	61-36

* WIAC (3-6)

+ IAC Tournament

Coach: Brenda Zabriskie-DeNure

1994-95 (12-11)

11/22	at Drew	W	59-58
11/30	ST. ELIZABETH*	L	48-53
12/7	STATEN ISLAND	L	68-72
1/5	at Warner Southern	L	48-65
1/6	vs. Bethel	L	55-77
1/7	vs. Houten	L	39-58
1/9	CCNY	W	68-66
1/11	at York	L	33-34
1/14	at Mt. St. Vincent*	L	52-53
1/16	at Centenary*	W	69-57
1/18	at St. Elizabeth* (ot)	L	69-73
1/21	BARUCH	W	54-45
1/24	ST. JOSEPH'S (NY)	W	74-29
1/26	FDU-MADISON*	L	40-69
1/28	OLD WESTBURY	W	68-37
2/2	at Richard Stockton	L	46-65
2/6	CENTENARY*	W	62-59
2/8	MT. ST. MARY*	L	57-75
2/10	at Lehman	W	89-42

2/15	MEDGAR-EVERS	W	76-63
2/20	MANHATTANVILLE	W	70-50
2/23	vs. Yeshiva +	W	77-26
2/26	vs. Mt. St. Vincent+	W	53-46

* WIAC (2-5)

+ IAC Tournament

Coach: Brenda Zabriskie-DeNure

1995-96 (16-5)

11/21	DREW	L	62-71
11/29	at St. Elizabeth	W	63-36
12/2	vs CCNY	W	57-55
12/3	at Manhattanville	L	55-61
12/5	MT. ST. VINCENT	W	82-48
12/7	at Staten Island	W	52-45
1/6	STOCKTON	L	50-57
1/10	at York	W	80-37
1/13	at Mt. St. Vincent	W	70-52
1/15	at Centenary	W	73-66
1/25	at FDU-Madison	L	43-49
1/30	ST. ELIZABETH	W	59-42
2/5	CENTENARY	W	76-72
2/7	at Mt. St. Mary	L	41-59
2/9	HUNTER	W	62-42
2/12	at Baruch	W	91-37
2/14	N.Y. MARITIME	W	88-15
2/18	at Bard	W	74-35
2/19	ST. JOSEPH'S (NY)	W	73-24
2/24	YESHIVA	W	92-12
2/25	MT. ST. VINCENT	W	60-43

* WIAC (4-1)

Coach: Maureen O'Neil

1996-97 (7-15)

11/22	at Rutgers-Newark	L	33-74
11/23	vs. Manhattanville	L	36-68
12/2	GEORGIAN COURT	L	21-74
12/4	at Mt. St. Vincent	W	60-50
12/5	at Montclair State	L	38-85
12/7	vs. John Jay	W	53-49
12/11	ST. JOSEPH'S (NY)*	W	75-53
1/7	at Richard Stockton	L	42-84
1/13	at Centenary*	L	56-75
1/15	at York	W	58-34
1/21	QUEENS (NY)	L	46-70
1/23	MT. ST. VINCENT	L	43-65
1/27	ST. JOSEPH'S(Bkn)*	W	73-55
1/30	FDU-MADISON	L	47-64
2/1	at Caldwell	L	
2/3	at CENTENARY*	L	51-82
2/5	ST. ELIZABETH	W	52-42
2/7	STATEN ISLAND	L	51-62
2/13	BARD	W	58-46
2/17	ST. JOSEPH'S (NY)*	L	52-53
2/20	at St. Elizabeth*	L	39-65
2/22	at Mt. St. Mary	L	44-81

* WIAC (3-4)

Coach: Bill McColl

1997-1998 (5-21)

First Year Division II

11/15	at St. Rose*	L	27-122
11/17	CALDWELL	L	60-77
11/23	at Bridgeport	L	44-81
11/28	vs. Bloomfield	W	59-53
11/29	at Molloy*	L	54-63
12/3	DOWLING*	L	65-76
12/6	at Mercy*	L	67-76
12/8	at Concordia (NY)*	L	65-77
12/10	at Adelphi*	L	52-76
12/13	SOUTHAMPTON*	L	56-87
1/5	at Dist. Of Columbia	L	50-59
1/7	C.W. POST*	L	47-70
1/10	at Dowling*	L	57-88
1/14	QUEENS (NY)*	W	50-48
1/17	PHILA. TEXTILE*	L	64-93
1/19	at C.W. Post*	L	45-63
1/21	at Molloy*	L	38-61
1/24	MERCY*	L	59-67
1/28	at Queens (NY)*	W	66-57
1/31	MOLLOY	L	53-66
2/4	at Phila. Textile*	L	54-83
2/7	CONCORDIA (NY)*	W	70-65
2/11	at Southampton*	L	52-79
2/14	DIST. OF COLUMBIA	W	62-51
2/18	ADELPHI*	L	48-59
2/21	ST. ROSE*	L	30-63

* NYCAC (3-17)

Coach: Kim Barnes Arico

1998-99 (11-16)

11/27	at District of Columbia	L	75-87
11/28	vs. Elizabeth City	L	55-80
12/2	ADELPHI*	L	65-69
12/5	MOLLOY*	W	62-56
12/9	at Philadelphia Textile*	L	49-86
12/12	ST. ROSE*	L	64-98
1/2	DOWLING*	L	62-75
1/4	CONCORDIA (NY)*	L	56-66
1/6	at Southampton*	L	48-72
1/9	at New York Tech*	W	55-42
1/13	QUEENS (NY)*	W	68-44
1/16	at Mercy*	W	54-47
1/18	C.W. POST* (3ot)	W	62-59
1/20	at Adelphi* (ot)	L	56-58
1/23	at St. Augustine	L	43-74
1/25	at Molloy*	W	65-57
1/27	PHILA. TEXTILE*	L	45-71
1/30	at St. Rose*	L	40-81
2/1	DOWLING*	W	65-61
2/3	at Concordia (NY)*	W	61-50
2/6	SOUTHAMPTON*	L	52-63
2/7	DIST. OF COLUMBIA	L	55-57
2/10	NEW YORK TECH*	W	75-32
2/13	at Queens (NY)*	W	53-49
2/17	MERCY*	W	54-41
2/20	at C.W. Post*	L	51-59
2/23	at Southampton+	L	51-74

* NYCAC (9-12)

+ NYCAC Tournament

Coach: Kim Barnes Arico

1999-2000 (11-16)

11/20	at Coll of New Jersey	L	53-77
11/21	vs. Lehman	W	74-56
11/23	ST. PAUL'S (ot)	L	62-66
12/1	ADELPHI*	L	58-75
12/4	at New York Tech*	W	74-61
12/8	PHILADELPHIA*	L	69-78
12/11	at Queens (NY)*	W	72-59
12/19	ST. ROSE*	L	51-87
1/5	MOLLOY*	L	61-68
1/8	at Mercy*	L	46-77
1/12	DOWLING*	W	57-49
1/15	at C.W. Post*	L	64-75
1/17	CONCORDIA (NY)*	W	85-59
1/19	at Adelphi*	L	56-78
1/22	NEW YORK TECH*	W	77-51
1/26	at Philadelphia*	L	52-81
1/29	QUEENS (NY)*	W	64-54
2/2	SOUTHAMPTON*	L	58-80
2/5	at Molloy*	W	72-70
2/9	MERCY*	L	52-64
2/12	at Dowling*	W	72-52
2/16	C.W. POST*	W	64-51
2/18	ST. AUGUSTINE	L	56-58
2/20	at Concordia (NY)*	W	72-65
2/23	at Southampton*	L	53-79
2/26	at St. Rose*	L	42-94
2/29	at Philadelphia+	L	65-80

* NYCAC (10-12)

+ NYCAC Tournament

Coach: Sharon Manning Beverly

2000-01 (4-23)

11/21	DOMINICAN*	L	44-67
11/27	KUTZTOWN	L	63-85
11/29	at Goldey-Beacom*	W	73-52
12/2	at USP*	L	46-61
12/4	SOUTHAMPTON	L	51-74
12/6	at Nyack*	L	49-67
12/9	at Wilmington (DE)*	L	52-74
12/15	HOLY FAMILY*	L	30-72
12/19	BLOOMFIELD*	L	48-65
1/2	at Eckerd	L	52-84
1/3	at St. Leo	L	49-80
1/9	GEORGIAN COURT*	L	53-65
1/11	at Teikyo Post*	L	67-78
1/13	at Felician*	L	54-74
1/17	at Dominican (NY)*	L	42-79
1/20	at Bloomfield*	L	58-62
1/27	USP*	L	56-79
1/30	CALDWELL*	L	56-78
2/1	at Georgian Court*	L	66-68
2/3	GOLDEY-BEACOM*	W	57-56
2/6	TEIKYO POST*	W	62-60

2/7	NYACK*	L	68-83
2/10	FELICIAN*	L	58-73
2/12	at Caldwell*	L	52-72
2/14	WILMINGTON (DE)*	W	62-47
2/17	at Holy Family*	L	55-72
2/21	at New Haven	L	63-90

* CACC (4-18)

Coach: Sharon Manning Beverly

2001-02 (15-12)

11/17	vs. Lynn	L	53-59
11/18	vs. Mercy	W	73-68
11/20	at Southampton	L	60-95
11/27	NYACK*	W	77-63
12/1	at Wilmington (DE)*	W	71-43
12/5	DOMINICAN (NY)*	L	65-78
12/8	at Felician*	L	69-77
12/10	at Caldwell*	L	60-80
12/15	GEORGIAN COURT*	W	64-51
12/22	USP*	W	64-51
1/3	TEIKYO POST*	W	79-49
1/5	at Holy Family*	L	44-65
1/8	at Bloomfield*	L	62-75
1/10	at Dominican (NY)*	W	72-65
1/15	FELICIAN*	W	76-73
1/19	at Goldey-Beacom*	W	63-42
1/23	at Nyack*	W	91-84
1/26	CALDWELL* (ot)	W	74-70
2/2	HOLY FAMILY*	L	53-71
2/5	at Teikyo Post*	W	88-58
2/7	at Georgian Court*	W	76-53
2/9	GOLDEY-BEACOM*	W	76-45
2/12	at USP*	L	60-79
2/14	BLOOMFIELD*	L	62-67
2/16	WILMINGTON (DE)*	W	83-54
2/18	at Kutztown	L	59-69
2/23	NEW HAVEN	L	53-72

* CACC (14-8, 4th/12)

Coach: Sharon Manning Beverly

2002-03 (16-12)

11/22	vs. Stonehill	L	64-80
11/23	vs. La Roche	W	85-52
11/26	NYACK*	W	63-56
12/1	KUTZTOWN	L	67-70
12/4	at Wilmington (DE)*	W	64-39
12/7	at Dominican (NY)*	W	77-69
12/10	at Goldey-Beacom*	W	67-35
12/14	at Felician*	W	76-67
12/21	at Georgian Court*	L	51-67
12/30	at Eckerd	L	56-66
1/2	at St. Leo	L	40-96
1/5	USP*	W	81-51
1/7	at Caldwell*	L	57-68
1/9	TEIKYO POST*	W	74-38
1/14	at Bloomfield*	L	64-65
1/16	DOMINICAN (NY)*	W	60-56
1/18	at Holy Family*	W	69-79
1/21	FELICIAN*	W	82-77
1/25	GOLDEY-BEACOM*	W	73-60
1/28	at Nyack*	W	69-61
2/1	CALDWELL*	W	53-51
2/5	at Teikyo Post*	L	59-65
2/8	HOLY FAMILY*	L	50-61
2/11	at USP*	L	55-58
2/15	BLOOMFIELD*	W	59-56
2/19	GEORGIAN COURT*	W	77-54
2/22	WILMINGTON (DE)*	W	72-50
2/26	at Caldwell+	L	63-64

* CACC (15-7, 4th/12)

+ CACC Tournament

Coach: Kim Bowen

2003-04 (12-16)

11/21	at Assumption	L	43-66
11/22	vs. Stonehill	L	56-73
11/25	at Nyack*	W	79-61
12/3	WILMINGTON (DE)*	W	62-50
12/9	at Felician*	L	52-56
12/12	at American Int'l	L	52-86
12/13	vs. Southern Conn.	L	33-67
12/20	GEORGIAN COURT*	W	68-49
12/30	at Kutztown	W	67-59
1/5	CALDWELL*	L	68-71
1/8	TEIKYO POST*	L	56-68
1/13	BLOOMFIELD*	W	73-64
1/15	at Dominican (NY)*	L	58-73
1/17	at Holy Family*	L	58-93
1/24	at Goldey-Beacom*	W	67-60

1/27	NYACK*	W	68-52
1/29	at USP*	L	61-65
1/31	at Caldwell* (ot)	W	91-89
2/2	DOMINICAN (NY)*	L	61-67
2/4	at Teikyo Post* (2ot)	W	97-94
2/7	HOLY FAMILY*	L	52-84

* CACC (11-11, T-6th/12)

+ CACC Tournament

Coach: Kim Bowen Lusk

2004-05 (18-12)

11/15	ASSUMPTION	L	48-54
11/19	vs. East Stroudsburg^	W	66-55
11/20	at Kutztown^ (ot)	L	68-69
11/30	at Felician*	W	65-55
12/2	GOLDEY-BEACOM*	W	98-72
12/4	HOLY FAMILY*	W	53-73
12/7	at Post*	W	62-49
12/11	at USP*	L	55-70
12/29	at Bryant#	L	59-70
12/30	vs. American Int'l	L	58-77
1/5	WILMINGTON (DE)*	L	72-74
1/11	at Caldwell*	W	70-52
1/15	at Bloomfield	L	68-84
1/18	DOMINICAN (NY)*	W	47-35
1/20	at Nyack*	W	73-46
1/25	FELICIAN*	W	62-56
1/27	at Goldey-Beacom*	W	83-54
1/29	at Holy Family	L	59-77
2/1	POST*	W	77-49
2/5	USP*	W	61-44
2/8	GEORGIAN COURT*	W	71-63
2/12	at Wilmington (DE)*	L	69-78
2/15	CALDWELL*	W	77-56
2/19	BLOOMFIELD*	W	73-55
2/22	at Dominican (NY)*	W	68-64
2/25	NYACK*	W	73-40
2/26	at Georgian Court*	W	82-52
3/2	DOMINICAN (NY)\$	W	67-45
3/4	vs. Holy Family\$	L	73-84
3/11	at Philadelphia U. I	L	56-63

*CACC

^Kutztown University Classic

#Comfort Suites Holiday Classic

\$CACC Tournament

IECAC Tournament at Philadelphia

Coach: Kim Bowen Lusk

2005-06 (17-10)

11/22	KUTZTOWN	W	49-40
11/29	CALDWELL*	W	61-57
12/1	HOLY FAMILY*	L	46-58
12/3	at Goldey-Beacom*	W	76-69
12/6	at Bloomfield*	L	59-67
12/10	NYACK*	W	66-35
12/12	at Georgian Court*	W	74-57
12/28	vs. Nebraska-Kearney^	L	50-76
12/29	vs. Uva-Wise^	W	79-63
1/7	at USP*	L	53-55
1/10	WILMINGTON*	W	70-46
1/12	at Philadelphia*	W	49-46
1/17	FELICIAN*	W	51-33
1/19	at Post*	W	79-66
1/21	DOMINICAN*	L	60-65
1/24	at Wilmington*	W	55-53
1/26	BLOOMFIELD*	L	60-67
1/28	GOLDEY-BEACOM*	W	68-55
1/31	at Nyack*	W	64-49
2/2	USP*	L	56-59
2/4	at Felician*	W	71-66
2/7	at Dominican*	W	77-72
2/11	PHILADELPHIA*	L	61-72
2/14	at Holy Family*	L	56-68
2/18	at Caldwell*	L	45-52
2/21	GEORGIAN COURT*	W	76-58
2/25	POST*	W	76-52

*CACC (15-9, 6th/13)

^South Padre Island Shootout

Coach: Kim Bowen Lusk

2006-07 (4-24) First Year Division I

11/13	MORGAN STATE	L	55-63	1/6	at Long Island	L	51-60
11/17	*vs. North Florida	L	46-52	1/11	at Texas A&M Kingsville	L	57-66
11/18	*vs. Norfolk	W	91-70	1/13	at Texas-Pan American	L	44-55
11/21	WILMINGTON (DE)	W	86-54	1/18	at Wagner	L	41-61
11/26	at UMBC	L	51-78	1/23	MONMOUTH	L	54-58
11/28	SAINT PETER'S	L	61-67	1/27	IPFW	L	70-81
12/2	at Winston-Salem State	L	41-72	2/1	UTAH VALLEY STATE	L	48-79
12/6	at Princeton	L	51-75	2/3	TEXAS-PAN AMERICAN	L	57-70
12/9	LEHIGH	L	44-70	2/8	at South Dakota State	L	30-96
12/12	at Fairleigh Dickinson	L	69-78	2/10	at North Dakota State	L	49-81
12/22	ST. FRANCIS (NY)	L	36-59	2/17	LONGWOOD	W	50-38
12/28	at Lafayette	W	70-59	2/20	at IPFW	L	43-58
1/4	at Cornell	L	42-65	2/24	at Utah Valley State	L	40-71
				3/1	NORTH DAKOTA STATE	L	54-73
				3/3	SOUTH DAKOTA STATE	L	47-72

*Longwood Tournament

Coach: Kim Bowen Lusk

WOMEN'S BASKETBALL DIVISION I SUPERLATIVES...

Team

NJIT

91 vs. Norfolk, (11.18.06)
24 vs. Norfolk State, (11.18.06)
70 vs. Morgan State, (11.13.06)
.453 (24-53) vs. Norfolk State, (11.18.06)
8 vs. North Dakota State, (3.1.07)
32 vs. UMBC, (11.26.06)
.800 (4-5) vs. LIU, (1.6.07)
37 vs. Norfolk State, (11.18.06)

51 vs. Lafayette, (12.28.06)
.900 (18-20) vs. Texas-Pan American, (1.13.07)
49 vs. Saint Peter's (11.28.07)

15 at Texas-Pan American, (1.11.07)
14, Monmouth (1.23.07)

5 at Utah Valley (2.24.07)

Points

Field Goals Made
Field Goal Attempts
Field Goal Percentage
3 Pt. Field Goals Made
3 Pt. Field Goal Attempts
3 Pt. Field Goal Percentage
Free Throws Made
Free Throw Attempts
Free Throw Percentage
Rebounds

Assists
Steals

Blocked Shots

Opponents

96, South Dakota State, (2.8.07)
36, South Dakota State, (2.8.07)
74, Norfolk State, (11.18.06)
.509 (28-55), IPFW, (1.27.07)
11, Princeton, (12.6.06)
29, Lehigh, (12.9.06)
.583 (7-12), North Dakota State, (2.10.07)
22, Fairleigh Dickinson (12.12.06)
Texas-Pan American (2.3.07)
36, Texas-Pan American, (2.3.07)
.818, IPFW, (1.27.07)
56, South Dakota State, (2.8.07)
Morgan State (11.13.07)
24, UMBC, (11.26.06)
21, Texas-Pan American, (1.13.07)
Fairleigh Dickinson (12.12.06)
North Florida (11.17.06)
11, Texas-Pan American, (2.3.07)
Wagner (1.18.07)

Individuals

NJIT

22, Jill Dickinson vs. Lafayette (12.28.06)
6, Colleen Vogel vs. Wagner (1.18.07)
16, Colleen Vogel vs. North Dakota St. (2.10.07)
Katie Piekieski vs. Morgan State (11.13.06)
.857 (6-7) Colleen Vogel vs. Wagner (1.18.07)
4, Kelly Crowe vs. IPFW (1.27.07)
11, Katie Piekieski vs. UMBC (11.26.06)
Jill Dickinson vs. UMBC (11.26.06)
1.000 (4-4), Kelly Crowe vs. IPFW (1.27.07)
11, Taiwo Oyelola vs. Lafayette (12.28.06)
13, Taiwo Oyelola vs. Lafayette (12.28.06)
Kelly Crowe vs. Lafayette (12.28.06)
1.000 (8-8) Taiwo Oyelola vs. Texas-Pan American
13, Aine O'Dwyer vs. Lafayette (12.28.06)
7, Aine O'Dwyer vs. South Dakota State (3.307)
7, Kelly Crowe vs. Monmouth (1.23.07)
3, Katie Piekieski vs. Wagner (1.18.07)

Points

Field Goals Made
Field Goal Attempts

Field Goal Percentage
3 Pt. Field Goals Made
3 Pt. Field Goal Attempts
3 Pt. Field Goal Percentage
Free Throws Made
Free Throw Attempts
Free Throw Percentage
Rebounds
Assists
Steals
Blocked Shots

Opponents

25, Megan Vogel, South Dakota State, (2.8.07)
10, Robyn Fairbanks, Utah Valley, (2.24.07)
21, Chelsey Bunyer, Wagner (1.18.07)

1.000 (5-5), Jerri Penley, North Dakota State (3.1.07)
4, Megan Vogel, South Dakota State (2.8.07)
10, Sara Ellis, Lehigh (12.9.06)

1.000 (3-3) Amanda Girodat, North Dakota St. (2.10.07)
9, Gayle Coats, FDU (12.12.06)
13, MaHogany Daniel, Texas-Pan American (2.3.07)

1.000 (5-5) (three different people) (1.13.07)
15, Shalonda Carter, Winston-Salem St. (12.2.06)
10, Gayle Coats, FDU (12.12.06)
8, MaHognay Daniel, Texas-Pan American (2.3.07)
10, Ali Ridge, Wagner (1.18.07)

-A-

ALVAREZ, Jady 04
ALVAREZ, Liliana 91, 92, 93, 94
AUGUSTINE, Joann 95

-B-

BALDWIN, Ayisha 97
BALLOU, Nicole 00, 01, 02, 03
BATTISTA, Laura 94, 95
BAUMLIN, Ali 06, 07
BEGASSE, Eileen 87
BELBO, Nancy 94
BERNARDO, Carolena 87
BROWN, Jessica 93, 94

-C-

CALWER, Heike 91
CORSARO, Denise 87
COURTNEY, Schevilla 96
CROWE, Kelly 04, 05, 06, 07
CRUZ, Iris 88, 90, 92

-D-

DALEY, Lauren 99, 00
DASH, Sharon 90
DAUMER, Kate 05, 06
DAVILA, Nadia 97
DAWSON, Marilyn 87
DICKINSON, Jill 06, 07
DIXON, Shonte 03, 04
DOMONKOS, Eileen 92, 93
DUNCAN, Kate 01, 02, 03, 04
DYER, Quinda 94

-E-

EBEWO, Eti 04, 05, 06
ENGLAND, Button 02

-F-

FELIZ, Tania 97, 98
FOGG, Tamika 96, 97
FORTIER, Linda 88

FOSTER, Takiya 02
FUKAZAWA, Ursula 91
FUSCO, Elisa 88

-G-

GARNER, Tywana 90
GAVIN, Kerri Ann 99
GOLDRICK, Liz 87, 90
GRANT, Natasha 91, 93
GRAY, Winsome 90
GRUENEWALD, Wendy 93, 94, 95, 96
GUY, Laquana 01
GYURICZA, Emese 05, 06

-H-

HEMINGWAY, Denaya 04, 05, 06
HENDRICKS, Lesley 07
HICKMAN, Jamie 92
HOBSON, Renee 88, 90, 92
HRNCIAR, Kim 92
HUFNAGEL, Elaine 91

-J-

JENERSON, Elizabeth 02
JOHNSON, Hanifa 95, 96
JORDAN, Tennille 99, 00, 01, 02
JOSEPH, Jennifer 91, 94

-K-

KERSHAW, Selena 02, 03, 04, 05
KUBIAK, Gretchen 99
KUKAL, Sharon 98, 99

-L-

LUPO, Jackie 03, 04, 05

-M-

MACK, Alexis 93, 95
MACK, Demesha 90
MALINOWSKI, Tracey 87
MALLORY, Colette 94
MALOON, Merna 98
MASSEY, SchrKy 02, 03

McCAFFREY, Jackie 05, 06
McMILLIAN, Dion 87, 88
McNAIR, Tamara 96, 97, 98
MILLER, Alison 07
MITROVIC, Sandy 93
MOSLEY, Kyrra 96
MULLEN, Veronica 99, 00

-N-

NEIRA, Lisa 05

-O-

OCHS, Gina 91
O'CONNOR, Jackie 98, 99, 00, 01
O'DWYER, Aine 04, 05, 06, 07
OYELOLA, Kehinde 07
OYELOLA, Taiwo 07

-P-

PANTANO, Lisa 95
PATRIKIOS, Stephanie 01, 02
PIEKELSKI, Katie 07
POLMEDA, Joie 98
PRESENDIEU, Aulina 99, 00, 01
PYRON, Odelia 98, 99, 00, 01

-R-

RAFF, Michelle 94
REGGO, Lindsey 01, 02, 03, 04
RICHARDSON, Tiffany 95
ROBERTS, Deborah 92, 93, 94
ROBINSON, Erica 90
ROBINSON, Sharae 03
RODRIGUEZ, Brenda 95
RODRIGUEZ, Natalie 96, 97, 98
ROESSNER, Chrissa 98

-S-

SAMMS, Chevanese 01, 02, 03
SCHMIDT, Diane 95
SIMPSON, Kristie 95, 96
SMITH, Darnella 88
SNEED, Brandy 02

-T-

THIBEAUD, Lucie 91, 92, 93, 94
THOMSON, Deanra 92
TRUKOWSKI, Tracy 94
TRYMAN, Naima 99
TUDOR, Lauren 00
TURNBULL, 03, 04, 05, 06

-U-

ULLOA, Alba 97

-V-

VAN WRIGHT, Nevea 92, 93, 94, 96
VELEZ, Erika 03, 04, 05
VOGEL, Colleen 07

-W-

WASHINGTON, Lisa 87
WEBER, Cynthia 95
WIGHTON, Kathryn 07
WINCHESTER, Melsha 98, 99, 00, 01
WOMACK, Racquel 93
WORLEY, Sandy 88, 90

-Z-

ZAMBRANO, Claudia 97, 98
ZIEMBA, Melissa 96

Note: Only second year of playing season is listed, i.e., 95=1994-95 season

ALL-TIME RECORDS VS. OPPONENTS

Adelphi	0-6	Georgian Court	8-6	New Jersey, Coll. of	0-1	South Dakota State	0-2
American International	0-2	Goldey-Beacom	12-0	New Rochelle	2-0	Southern Connecticut	0-1
Assumption	0-2	Greensboro	0-1	New York Maritime	8-1	Staten Island	2-2
Bard	2-0	Holy Family	0-13	NYIT	4-0	Stevens Tech	2-0
Baruch	4-0	Houghton	0-1	Norfolk State	1-0	Stonehill	0-2
Bethel	0-1	Hunter	1-2	North Dakota State	0-2	Texas-Pan American	0-2
Bloomfield	4-15	John Jay	1-0	North Florida	1-0	Texas A&M Kingsville	0-1
Bridgeport	0-1	Johns Hopkins	0-1	Norte Dame (RI)	0-1	UMBC	0-1
Bryant	0-1	IPFW	0-2	Nyack	10-2	Upsala	0-11
Caldwell	6-13	Kutztown	2-4	Old Westbury	1-4	Utah Valley	0-2
Cal State Bakersfield	0-0	Lafayette	1-0	Philadelphia	1-9	USP	3-10
Centenary (NJ)	6-8	La Roche	1-0	Post (CT)	9-3	Vassar	1-1
CCNY	4-0	Lehigh	0-1	Princeton	0-1	Virginia-Wise	1-0
Chicago State	0-0	Lehman	2-0	Queens (NY)	6-1	Wagner	0-1
Columbia	0-0	Lynn	0-1	Richard Stockton	0-3	Warner Southern	0-1
Concordia (NY)	4-2	Long Island	0-1	Rutgers-Newark	0-2	William Paterson	0-1
Cornell	0-1	Longwood	1-0	St. Augustine	0-2	Wilmington (DE)	10-3
CW Post	2-4	Manhattanville	1-3	St. Elizabeth	4-15	Winston-Salem State	0-1
District of Columbia	1-3	Medgar Evers	3-1	St. Francis (NY)	0-1	Yeshiva	7-0
Dominican (NY)	7-7	Mercy	3-4	St. Joseph's (Brooklyn)	1-0	York (NY)	5-2
Dowling	3-3	Molloy	3-4	St. Joseph's (LI)	3-1	<i>2007-08 opponents in bold</i>	
Drew	2-7	Monmouth	0-1	St. Joseph's (PA)	0-0	Total Division I - 4-24 - .143	
East Stroudsburg	1-0	Montclair State	0-1	St. Paul's	0-1	Total Division II - 113-162 - .411	
Eckerd	0-2	Morgan State	0-1	St. Thomas Aquinas	0-1	All-time - 182-284 - .391	
Elizabeth City	0-1	Mt. St. Mary (NY)	0-12	Saint Peter's	0-1		
FDU-Teaneck	0-1	Mt. St. Vincent	8-7	Saint Leo	0-2		
Felician	8-4	Nazareth	0-1	Saint Rose	0-6		
Florida Gulf Coast	0-0	Nebraska-Kearney	0-1	Savannah State	0-0		
Fordham	0-0	New Haven	0-2	Southampton	0-9		

AUBURN UNIVERSITY

Potential 2nd Round Opponent
Hawks Classic
Dec. 29, 2 pm/ 4 pm at Philadelphia, PA

UCF Holiday Classic
Dec. 31, 4:30pm/ 7:30 pm, at Orlando, FL

General Information

Location: Auburn, AL
Founded: 1856
Enrollment: 23,547

Nickname/colors: Tigers/Burnt Orange & Navy Blue
Home Court: Beard-Eaves-Memorial Coliseum (10,500)

Conference: Southeastern

President: Dr. Jay Gouge
Director of Athletics: Jay Jacobs

Sports Information

Basketball Contact: Carol White
Office Phone: 334-844-9182
Email: whitocr@auburn.edu

Women's Basketball

Head Coach (alma mater, year): Nell Fortner (Texas, '82)
Career record (years): 68-52 (4)
Record at school (years): 51-41 (3)

Series vs. NJIT: No previous meetings
2006-07 overall/conference (finish): 21-13/6-8(9th)
Returning/lost (starters): 11 (5)/2 (0)

**CALIFORNIA STATE UNIVERSITY**

Jan. 11, 7 pm, neutral site game at Texas-Pan American

Potential Opponent
Division I Independent Tournament
Mar. 6-Mar. 8 at Edinburg, TX

General Information

Location: Bakersfield, CA
Founded: 1970
Enrollment: 8,000

Nickname/colors: Roadrunners/Blue and Gold
Home Court (capacity): Icardo Center (3,880)

Conference: Independent

President: Dr. Horace Mitchell
Director of Athletics: Rudy Carvajal

Sports Information

Basketball Contact: Kevin Gilmore
Office Phone: 661-654-6071
Email: kgilmore@csu.edu

Women's Basketball

Head Coach (alma mater, year): Tim La Kose (CS Northridge, '91)
Career record (years): 278-100 (14)
Record at school (years): 142-33 (6)

Series vs. NJIT: No previous meetings
2006-07 overall/conference (finish): 23-6/20-2 (1st; DII)
Returning/lost (starters): 5(2)/6 (3)

**CHICAGO STATE UNIVERSITY**

Jan. 26, 3 pm, Prudential Center
Feb. 9, 2 pm, at Chicago IL

Potential Opponent
Division I Independent Tournament
Mar. 6-Mar. 8 at Edinburg, TX

General Information

Location: Chicago, IL
Founded: 1867
Enrollment: 7,200

Nickname: Cougars
Colors: Evergreen and White
Home Arena (capacity): Jacoby Dickens Center (2,500)

Conference: Independent

President: Dr. Elnora D. Daniel
Director of Athletics: Wayne Baskerville

Sports Information

Basketball Contact: Ruben R. Perez, Jr.
Office phone: 773-995-2217
E-mail: rperez21@csu.edu

Women's Basketball

Head coach (alma mater, year): Angela Jackson (Old Dominion '91)
Career record (years): 42-71 (5)
Record at school (years): same

Series vs. NJIT: No previous meetings
2006-07 overall record: 9-20
Letterwinners returning/lost (starters): 5(3)/7(2)

**COLUMBIA UNIVERSITY**

Jan. 3, 7 pm, Fleisher Athletic Center

General Information

Location: New York, NY
Founded: 1754
Enrollment: 5,621

Nickname: Lions
Colors: Columbia Blue & White
Home Court (capacity): Francis Leavenworth Gymnasium (2,700)

Conference: Ivy League

President: Lee C. Bollinger
Director of Athletics: Dr. M Dianne Murphy

Sports Information

Basketball Contact: Pete McHugh
Office phone: 212-854-2534
E-mail: ptm2102@columbia.edu

Women's Basketball

Head coach (alma mater, year): Paul Nixon (Vanderbilt '93)
Career record (years): 14-31 (3)
Record at school (years): same

Series vs. NJIT: No previous meetings
2006-07 overall/conference (finish): 8-20/4-10 (7th)
Returning/lost (starters): 11 (2)/4 (3)

**CORNELL UNIVERSITY**

Jan. 15, 6 pm, Prudential Center

General Information

Location: Ithaca, NY
Founded: 1865
Enrollment: 13,700

Nickname/colors: Big Red/Carnelian Red and White
Home Court: Newman Arena (4,473)

Conference: Ivy League

President: David J. Skorton
Director of Athletics: J. Andrew Noel Jr.

Sports Information

Basketball Contact: Julie Greco
Office Phone: 607-255-9788
Email: jag235@cornell.edu

Women's Basketball

Head Coach (alma mater, year): Dayna Smith (Rhode Island '96)
Career record (years): 42-93 (5)
Record at school (years): same

Series vs. NJIT: Cornell leads, 1-0
2006-07 overall/conference (finish): 12-15/8-6 (3rd)
Returning/lost (starters): 10 (4)/3 (1)

**DAVIDSON UNIVERSITY**

Potential 2nd Round Opponent
Hawks Classic
Dec. 29, 2 pm/ 4 pm at Philadelphia, PA

General Information

Location: Davidson, NC
Founded: 1837
Enrollment: 1,700

Nickname/colors: Wildcats/Red and Black
Home Court (capacity): John M. Belk Arena (5,700)

Conference: Southern

President: Tom Ross
Director of Athletics: Jim Murphy

Sports Information

Basketball Contact: Gavin McFarlin
Office Phone: 704-894-2635
Email: gamcfarlin@davidson.edu

Women's Basketball

Head Coach (alma mater, year): Annette Watts (East Tennessee State '81)
Career record (years): 99-77 (6)
Record at school (years): same

Series vs. NJIT: No previous meetings
2006-07 overall/conference (finish): 23-9/13-5 (T-2nd)
Returning/lost (starters): 9(2)/3(3)



FAIRLEIGH DICKINSON UNIVERSITY

Nov. 17, 2 pm, Fleisher Athletic Center

General Information**Location:** Teaneck, NJ**Founded:** 1942**Enrollment:** 5,753**Nickname/colors:** Knights/Burgundy & Blue**Home Court (capacity):** Rothman Center (4,500)**Conference:** Northeast**President:** Dr. J Michael Adams**Director of Athletics:** David A. LangfordSports Information**Basketball Contact:** Wes Heinel**Office Phone:** 201-692-9361**Email:** Heinelwr@fd.eduWomen's Basketball**Head Coach (alma mater, year):** Peter Cinella

(Western New England College)

Career record (years): 291-130 (14)**Record at school (years):** First season**Series vs. NJIT:** FDU leads, 1-0**2006-07 overall/conference (finish):** 11-18/8-10 (7th)**Returning/lost (starters):** 7(4)/1(1)**FLORIDA GULF COAST UNIVERSITY**

Potential Opponent

Division I Independent Tournament

Mar. 6-Mar. 8 at Edinburg, TX

General Information**Location:** Fort Myers, FL**Founded:** 1997**Enrollment:** 9,400**Nickname/colors:** Eagles/Kelly Green and Royal Blue**Home Court (capacity):** Alico Arena (4,500)**Conference:** Atlantic Sun (DI reclassifying)**President:** Dr. Wilson Bradshaw**Director of Athletics:** Car McAlooseSports Information**Basketball Contact:** Mike Hill**Office Phone:** 239-590-7064**Email:** mhill@fgcu.eduWomen's Basketball**Head Coach (alma mater, year):** Karl Smesko

(Kent State '93)

Career record (years): 193-48 (8)**Record at school (years):** 132-21 (5)**Series vs. NJIT:** No previous meetings**2006-07 overall record:** 34-1 (DII)**Returning/lost (starters):** 6(2)/6(3)**LAFAYETTE COLLEGE**

Dec. 1, 7 pm, at Fleisher Athletic Center

General Information**Location:** Easton, PA**Founded:** 1826**Enrollment:** 2,346**Nickname/colors:** Leopards/Maroon & White**Home Court (capacity):** Allan P. Kirby Sports Center (3,500)**Conference:** Patriot League**President:** Daniel H. Weiss**Director of Athletics:** Bruce McCutcheonSports Information**Basketball Contact:** Katie Meier**Office Phone:** 610-330-5518**Email:** meierk@lafayette.eduWomen's Basketball**Head Coach (alma mater, year):** Tammy Smith

(East Stroudsburg '82)

Career record (years): 140-211 (14)**Record at school (years):** 27-143 (6)**Series vs. NJIT:** NJIT leads, 1-0**2006-07 overall/conference (finish):** 7-23/5-9 (6th)**Postseason:** Lost in quarterfinals to Holy Cross (49-64)**Returning/lost (starters):** 8(4)/1(1)**LEHIGH UNIVERSITY**

Dec. 8, 3:30 pm, at Lehigh

General Information**Location:** Bethlehem, PA**Founded:** 1865**Enrollment:** 4,700**Nickname/colors:** Mountain Hawks/Brown & White**Home Court:** Stabler Arena (5,600)**Conference:** Patriot League**President:** Dr. Alice P. Gast**Director of Athletics:** Joe SterrettSports Information**Basketball Contact:** Travis Collins**Office Phone:** 610-758-5101**Email:** tsc207@lehigh.eduWomen's Basketball**Head Coach (alma mater, year):** Sue Troyan

(Dickinson '88)

Career record (years): 163-179 (12)**Record at school (years):** same**Series vs. NJIT:** Lehigh leads, 1-0**2006-07 overall/conference (finish):** 11-20/5-9 (7)**Returning/lost (starters):** 11(3)/3 (2)**LONG ISLAND UNIVERSITY**

Dec. 12, 7 pm, Fleisher Athletic Center

General Information**Location:** Brooklyn, NY**Founded:** 1926**Enrollment:** 11,000**Nickname/colors:** Blackbirds/Black and Silver**Home Court (capacity):** Wellness, Recreation and Athletic Center (2,500)**Conference:** Northeast**President:** David J. Steinberg**Director of Athletics:** John SuarezSports Information**Basketball Contact:** Shawn Sweeney**Office Phone:** 718-488-1307**Email:** Shawn.Sweeney@liu.eduWomen's Basketball**Head Coach (alma mater, year):** Stephanie Gaitley

(Villanova '82)

Career record (years): 383-225 (21)**Record at school (years):** 83-32 (5)**Series vs. NJIT:** LIU leads, 1-0**2006-07 overall/conference (finish):** 22-9/15-3 (T-1st)**Returning/lost (starters):** 10 (4)/4 (1)**LONGWOOD UNIVERSITY**

Jan. 19, 7 pm, Fleisher Athletic Center

Mar. 2, 2 pm, at Farmville, VA

General Information**Location:** Farmville, VA**Founded:** 1839**Enrollment:** 4,350**Nickname/colors:** Lancers/Blue & White**Home Court (capacity):** Willett Hall (1,726)**Conference:** Independent**President:** Dr. Patricia P. Cormier**Director of Athletics:** Troy AustinSports Information**Basketball Contact:** Christina O'Brien**Office Phone:** 434-395-2568**Email:** obreincm@longwood.eduWomen's Basketball**Head Coach (alma mater, year):** Kristin Caruso

(University of Connecticut '90)

Career record (years): 32-79 (4)**Record at school (years):** first year**Series vs. NJIT:** NJIT leads, 1-0**2006-07 overall record:** 8-21**Returning/lost (starters):** 8(3)/5(2)

MONMOUTH UNIVERSITY

Jan. 24, 7 pm, at West Long Branch, NJ

General Information

Location: West Long Branch, NJ

Founded: 1933

Enrollment: 4,500

Nickname/colors: Hawks/Midnight Blue and White

Home Court (capacity): William T. Boylan Gymnasium (2,500)

Conference: Northeast

President: Vice Admiral Paul G. Gaffney II

Director of Athletics: Dr. Marilyn McNeil

Sports Information

Basketball Contact: Ed Occhipinti

Office Phone: 732-263-5834

Email: eocchipi@monmouth.edu

Women's Basketball

Head Coach (alma mater, year): Michele Baxter (St. John's Fisher '87)

Career record (years): 40-31 (4)

Record at school (years): same

Series vs. NJIT: Monmouth leads, 1-0

2006-07 overall/conference (finish): 18-13/10-8 (T-4th)

Returning/lost (starters): 12 (5)/1 (0)

**MORGAN STATE UNIVERSITY**

Feb. 14, 7 pm, Fleisher Athletic Center

General Information

Location: Baltimore, MD

Founded: 1867

Enrollment: 7,500

Nickname/colors: Lady Bears/Orange and Blue

Home Court (capacity): Talmadge Hill Field House (4,250)

Conference: Mid-Eastern Athletic

President: Dr. Earl S. Richardson

Director of Athletics: Floyd Kerr

Sports Information

Basketball Contact: Kevin Paige

Office Phone: 443-885-3009

Email: ravenspr26@aol.com

Women's Basketball

Head Coach (alma mater, year): Donald Beasley (Morgan State '84)

Career record (years): 23-36 (2)

Record at school (years): same

Series vs. NJIT: Morgan State leads, 1-0

2006-07 overall/conference (finish): 18-12/11-7 (4th)

Returning/lost (starters): 2(3)/7(2)

**PRINCETON UNIVERSITY**

Dec. 5, 7 pm, Fleisher Athletic Center

General Information

Location: Princeton, NJ

Founded: 1746

Enrollment: 4,600

Nickname/colors: Tigers/Orange & Black

Home Court: Jadwin Gym

Conference: Ivy League

President: Shirley Tilghman

Director of Athletics: Gary D. Walters

Sports Information

Basketball Contact: Andrew Borders

Office Phone: 609-258-5788

Email: Aborders@princeton.edu

Women's Basketball

Head Coach (alma mater, year): Courtney Banghart (Dartmouth '00)

Career record (years): First season

Record at school (years): same

Series vs. NJIT: Princeton leads, 1-0

2006-07 overall/conference (finish): 13-15/7-7 (T-4th)

Returning/lost (starters): 10 (4)/7 (1)

**SAINT JOSEPH'S UNIVERSITY**

Hawks Classic

Dec. 28, 2 pm at Philadelphia, PA

General Information

Location: Philadelphia, PA

Founded: 1851

Enrollment: 4,150

Nickname/colors: Hawks/Crimson and Gray

Home Court (capacity): Alumni Memorial Fieldhouse (3,200)

Conference: Atlantic 10

President: Timothy R. Lannon, S.J.

Director of Athletics: Don DiJulia

Sports Information

Basketball Contact: Jack Jumper

Office Phone: 610-660-3389

Email: jjumper@sju.edu

Women's Basketball

Head Coach (alma mater, year): Cindy Griffin (Saint Joseph's '91)

Career record (years): 159-111 (9)

Record at school (years): 111-78 (5)

Series vs. NJIT: No previous meetings

2006-07 overall/conference (finish): 19-14/8-6 (T-5th)

2006-07 Philadelphia Big 5 record (finish): 3-1(2nd)

Returning/lost (starters): 8 (1)/5 (4)

**SAINT PETER'S COLLEGE**

Nov. 14, 7 pm, at Jersey City, NJ

General Information

Location: Jersey City, NJ

Founded: 1872

Enrollment: 3,282

Nickname/colors: Peacocks/Blue & White

Home Court: Yanitelli Center

Conference: Metro Atlantic Athletic

President: Eugene J. Cornacchia, PhD

Director of Athletics: William Stein

Sports Information

Basketball Contact: Pat Coleman

Office Phone: 201-761- 7315

Email: Pcoleman@spc.edu

Women's Basketball

Head Coach (alma mater, year): Stephanie DeWolfe (Saint Peter's '97)

Career record (years): 36-50 (3)

Record at school (years): same

Series vs. NJIT: Saint Peter's leads, 1-0

2006-07 overall/conference (finish): 12-18/7-11 (7)

Returning/lost (starters): 9(4)/5(1)

**SAVANNAH STATE UNIVERSITY**

Feb. 16, 2 pm, Fleisher Athletic Center

Feb. 23, 2 pm, at Savannah, GA

General Information

Location: Savannah, GA

Founded: 1890

Enrollment: 3,000

Nickname/colors: Lady Tigers/Burnt Orange and Reflex Blue

Home Court (capacity): Tiger Arena (6,000)

Conference: Independent

President: Dr. Earl G. Yarbrough, Sr.

Director of Athletics: Robert "Tony" O'Neal

Sports Information

Basketball Contact: Opio Mashariki

Office Phone: 912-356-2446

Email: mashariki@savstate.edu

Women's Basketball

Head Coach (alma mater, year): Cedric Baker (Voorhies College '90)

Career record (years): 220-196 (15)

Record at school (years): 28-83 (4)

Series vs. NJIT: No previous meetings

2006-07 overall/conference (finish): 12-17

Returning/lost (starters): 10(4)/2(1)



ST. FRANCIS COLLEGE (NY)

Nov. 11, 2 pm, at Brooklyn, NY

General Information**Location:** Brooklyn, NY**Founded:** 1884**Enrollment:** 2,300**Nickname/colors:** Terriers/Red and White**Home Court (capacity):** Peter Aquilone Court (1200)**Conference:** Northeast**President:** Dr. Frank Macchiarola**Director of Athletics:** Irma GarciaSports Information**Basketball Contact:** David Gansell**Office Phone:** 718-489-5490**Email:** dgansell@stfranciscollege.eduWomen's Basketball**Head Coach (alma mater, year):** Brenda Milano (Wagner '95)**Career record (years):** 37-77 (4)**Record at school (years):** same**Series vs. NJIT:** St. Francis leads, 1-0**2006-07 overall/conference (finish):** 13-18/7-11 (8)**Returning/lost (starters):** 9(4)/1(1)**UNIVERSITY OF TEXAS-PAN AMERICAN**

Jan. 9, 7 pm, at Texas-Pan American

Jan. 28, 7 pm, Fleisher Athletic Center

Potential Opponent*Division I Independent Tournament**Mar. 6-Mar. 8 at Edinburg, TX*General Information**Location:** Edinburg, TX**Founded:** 1927**Enrollment:** 19,576**Nickname/colors:** Lady Broncs/Forest Green, Orange and White**Home Court (capacity):** UTPA Fieldhouse (4,000)**Conference:** Independent**President:** Dr. Blandina Cardenas**Director of Athletics:** Scott StreetSports Information**Basketball Contact:** TBA**Office Phone:** 956-381-2240**Email:** TBAWomen's Basketball**Head Coach (alma mater, year):** DeAnn Craft (University Central Florida '87)**Career record (years):** 150-167 (18)**Record at school (years):** 45-68 (4)**Series vs. NJIT:** UTPA leads, 2-0**2006-07 overall:** 11-18**Returning/lost (starters):** 11(1)/4 (4)**UMBC**

Nov. 28, 7 pm, Fleisher Athletic Center

General Information**Location:** Baltimore, MD**Founded:** 1966**Enrollment:** 12,000**Nickname/colors:** Retrievers/Black & Gold with Red**Home Court (capacity):** RAC Arena (4,024)**Conference:** America East**President:** Dr. Freeman Harbowski**Director of Athletics:** Dr. Charles BrownSports Information**Basketball Contact:** Jessica Bernheim**Office Phone:** 410-455-2639**Email:** Jessica@umbc.eduWomen's Basketball**Head Coach (alma mater, year):** Phil Stern (Concordia '94)**Career record (years):** 151-162 (11)**Record at school (years):** 57-90 (4)**Series vs. NJIT:** UMBC leads, 1-0**2006-07 overall/conference (finish):** 16-17/6-10 (7th)**Postseason:** American East Champions, defeated No. 1 Hartford 48-46, America East Finals, lost to No. 1 Connecticut, 82-33, NCAA First Round**Returning/lost (starters):** 5(2)/7(3)**UTAH VALLEY**

Feb. 7, 7:05 pm (MT), at Utah Valley

Feb. 21, 7 pm, Fleisher Athletic Center

Potential Opponent*Division I Independent Tournament**Mar. 6-Mar. 8 at Edinburg, TX*General Information**Location:** Orem, UT**Founded:** 1941**Enrollment:** 23,000**Nickname/colors:** Wolverines/Forest Green, Gold and White**Home Court (capacity):** The McKay Center (8,500)**Conference:** Independent**President:** Dr. William A. Sederburg**Director of Athletics:** Mike JacobsenSports Information**Basketball Contact:** Clint Burgi**Office Phone:** 801-863-8644**Email:** burgicl@uvsc.eduWomen's Basketball**Head Coach (alma mater, year):** Cathy Nixon (BYU '89)**Career record (years):** 231-137 (12)**Record at school (years):** same**Series vs. NJIT:** Utah Valley leads, 2-0**2006-07 overall record:** 15-13**Returning/lost (starters):** 13(4)/2(1)**WAGNER COLLEGE**

Dec. 21, 1 pm, Fleisher Athletic Center

General Information**Location:** Staten Island, NY**Founded:** 1883**Enrollment:** 2,000**Nickname/colors:** Seahawks/Green & White**Home Court (Capacity):** Spiro Sports Center (2,100)**Conference:** Northeast Conference**President:** Dr. Richard Guarasci**Director of Athletics:** Walt HamelineSports Information**Basketball Contact:** Kevin Ross**Office Phone:** 718-390-3215**Email:** Kevin.Ross@wagner.eduWomen's Basketball**Head Coach (alma mater, year):** Gela Mikalauskas (Kean '77)**Career record (years):** 179-185 (13)**Record at school (years):** same**Series vs. NJIT:** Wagner leads, 1-0**2006-07 overall/conference (finish):** 3-26/1-17 (11)**Returning/lost (starters):** 8 (3)/6 (3)

BY CAR

New Jersey Turnpike: Driving North from South Jersey:

NJ Turnpike to Exit 13A Newark Airport. After toll booth stay to left follow signs to Rt. 1 & 9 North. You will merge onto Rt. 1 & 9 North. Airport will be on right. Follow signs for downtown Newark and Rt. 21 North (left lane exit ramp). Downtown Newark will be in front of you. Follow Rt. 21 North (McCarter Highway). Turn left on Raymond Blvd. Follow Raymond Blvd. past Warren St. traffic light (Raymond Blvd. becomes Lock St.) Fleisher Athletic Center & Lubetkin Field will be on your right.

New Jersey Turnpike: Driving South from North Jersey:

Take exit 15W to Route 280 West. Then follow Route 280 West directions.

Route 280 West: After drawbridge, take Exit 15A (Rt. 21 South - McCarter Highway). Follow Rt. 21 South to Raymond Blvd. Turn right on Raymond Blvd. Follow Raymond Blvd. past Warren St. traffic light (Raymond Blvd. becomes Lock St.) Fleisher Athletic Center & Lubetkin Field will be on your right.

Route 280 East: Take Exit 15 (Rt. 21 South - McCarter Highway). Follow Rt. 21 South to Raymond Blvd. Turn right on Raymond Blvd. Follow Raymond Blvd. past Warren St. traffic light (Raymond Blvd. becomes Lock St.) Fleisher Athletic Center & Lubetkin Field will be on your right.

Garden State Parkway (North & South bound): Take exit 145 to Route 280 East, then follow Route 280 East directions.

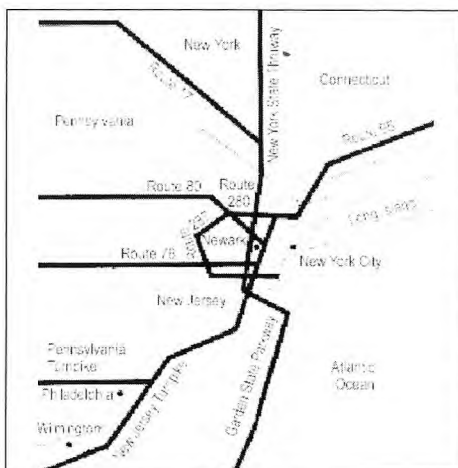
Route 1 & 9 North & South: Take exit marked Newark, Rt. 21 North. Follow Rt. 21 North (McCarter Highway). Turn left on Raymond Blvd. Follow Raymond Blvd. past Warren St. traffic light (Raymond Blvd. becomes Lock St.) Fleisher Athletic Center & Lubetkin Field will be on your right.

Route 78 East: Take Route 78 East to Rt. 21 North. Turn left on Raymond Blvd. Follow Raymond Blvd. past Warren St. traffic light (Raymond Blvd. becomes Lock St.) Fleisher Athletic Center & Lubetkin Field will be on your right.

Route 22 East: Take Route 22 East to Route 21 North. Turn left on Raymond Blvd. Follow Raymond Blvd. pass Warren Street Stop Light and Fleisher Athletic Center & Lubetkin Field will be on your right.

Route 21 North: Follow Rt. 21 North to Raymond Blvd. Turn left onto Raymond

Blvd. Follow Raymond Blvd. past Warren St. traffic light (Raymond Blvd. becomes Lock St.) Fleisher Athletic Center & Lubetkin Field will be on your right.



Route 21 South: Follow Rt. 21 South (McCarter Highway) to Raymond Blvd. Turn Right on Raymond Blvd. Follow Raymond Blvd. past Warren St. traffic light (Raymond Blvd. becomes Lock St.) Fleisher Athletic Center & Lubetkin Field will be on your right. *

New York Thruway: Thruway to Exit 14A, Garden State Parkway. Follow Garden State Parkway directions above.

George Washington Bridge: NJ Turnpike South to Exit 15W. Follow Route 280 West directions above.

Lincoln Tunnel: West on Rt. 3 to Rt. 21 South. Turn right onto Raymond Blvd. Follow Raymond Blvd. pass Warren Street Stop Light and Fleisher Athletic Center & Lubetkin Field will be on your right.

From Brooklyn, Queens and Long Island: Take Verrazano-Narrows Bridge (Interstate 278) and follow 278 across Staten Island. Cross Goethels Bridge. Follow signs to New Jersey Turnpike North and follow New Jersey Turnpike directions above.

OTHER TRANSPORTATION SYSTEMS

Newark International Airport: Five miles from the NJIT campus. A minibuss (Newark Airlink) or taxi service connects the airport with Penn Station in Newark. Bus, city subway, and taxi connections may be obtained at the station.

Newark Penn Station: Connections to the NJIT campus may be made by bus, city subway, or taxi.

Morris & Essex Broad Street Station: A

five-block walk to the NJIT campus via King Boulevard to Central Avenue. Taxi service is also available

Newark City Subway: From Penn Station in Newark, take the Warren Street stop for the NJIT campus.

DOWNTOWN HOTELS

Comfort Suites

1348 McCarter Highway, Newark
973/481-5200

Hampton Inn & Suites Newark Riverwalk

100 Passaic Avenue, 973/483-1900

Hilton Newark Gateway

Gateway Center, Raymond Blvd. & McCarter Highway, 973/622-5000

Robert Treat Hotel

50 Park Place, Newark, 973/622-1000

HOTELS NEAR NEWARK AIRPORT

Best Western Newark Airport West

101 International Way, Newark
973/621-6200

Courtyard by Marriot Newark Liberty International Airport

600 Route 1 & 9, Newark, 973/643-8500

Days Inn Newark 450 Rt.1 South (near Haynes Ave.), Newark, 973/242-0900

Fairfield Inn & Suites Newark Liberty International Airport 618 Rt.1 & 9 South, Newark, 973/242-2600

Four Points by Sheraton Newark Airport 901 Spring St., Elizabeth, 908/527-1600

Hampton Inn Newark Airport

1128-38 Spring St., Elizabeth
908/355-0500

Hilton Newark Airport 1170 Spring St., Elizabeth, 908/351-3900

Holiday Inn Newark Liberty

International Airport 160 Frontage Rd., Newark, 973/589-1000

Marriott Newark Liberty International Airport, Newark, 973/623-0006

Ramada Inn Newark Liberty

International Airport 550 Rt.1 & 9 South, Newark, 973/824-4000

Sheraton Newark Airport Hotel

128 Frontage Rd., Newark, 973/690-5500

Wyndham Newark Airport

1000 Spring St., Elizabeth,
908/436-4600



Shannon Abraham
Operations Manager
(973) 596-6406
abraham@njit.edu



Amanda Albright
Assistant Athletic Trainer
(973) 596-3623



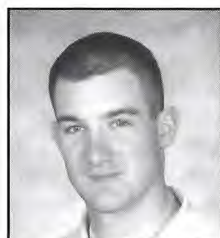
Adalberto M. Alonso
Head M/W Track & Field
Head M/W Cross Country
(973) 596-3636
alonso@njit.edu



Phil Baboulis
Head Women's Tennis
Head Men's Tennis
(973) 596-3636
pbtennis@optonline.net



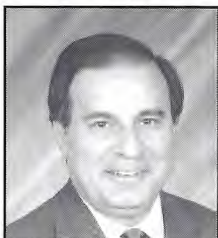
Joe Caiola
Asst. Director of Athletics/
Business & Facilities
(973) 642-7224
caiola@adm.njit.edu



Brian Callahan
Head Baseball
(973) 596-5827
callahan@njit.edu



Tim Camp
Asst. Director of Athletics
Sports Information
(973) 596-8461
timothy.camp@njit.edu



Jim Casciano
Head Men's Basketball
(973) 596-5727
casciano@adm.njit.edu



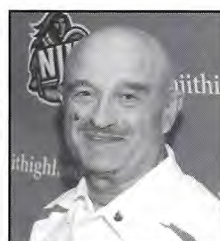
Dr. Roy Cornely
Faculty Athletics Rep.
(973) 596-3537
cornely@adm.njit.edu



Duane Felczak
Asst. Director of Phys. Ed.
(973) 596-3637
felczak@adm.njit.edu



Lenny Kaplan
Director of Athletics
(973) 596-3636
kaplan@adm.njit.edu



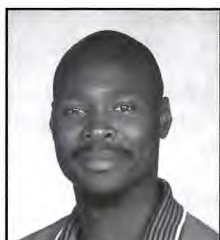
Yefim Litvan
Head Men's Fencing
Head Women's Fencing
(973) 596-8490
litvan@njit.edu



Pedro Lopes
Head Men's Soccer
(973) 596-5219
pedro.j.lopes@njit.edu



Margaret McKeon
Head Women's Basketball
(973) 596-3633
margaret.m.mckeon@njit.edu



Ryan McNeil
Head Men's Volleyball
Head Women's Volleyball
(973) 596-5380
mcneil@adm.njit.edu



Risa Ott
Assistant Athletic Director
of Compliance
(973) 596-3181
ott@admin.njit.edu



Michelle Paulter
Receptionist
(973) 596-3636
mlp2@njit.edu



Stephanie Pillari
Asst. Sports Information Director
(973) 596-8324
pillari@adm.njit.edu



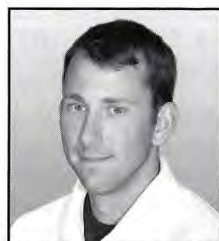
Alyssa Radu
Head Women's Soccer
(973) 596-2928
radu@adm.njit.edu



Eric Rasmussen
Head Men & Women's Swimming
(973) 596-5229
rasmussen@njit.edu



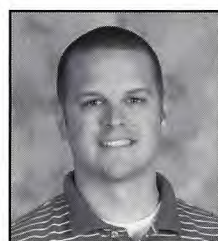
Alexis Schug
Associate Athletic Director/
Senior Woman Administrator
(973) 596-8452
schug@njit.edu



Drew VanDam
Head Athletic Trainer
(973) 596-3623
drew.j.vandam@njit.edu



Jonathan Walker
Front Desk Attendant
Equipment Specialist
(973) 596-5730



Tim Wuorinen
Coordinator for Compliance
and Student Athlete Services
(973) 596-5278
wuorinen@adm.njit.edu

Name	Grad. Year	Contribution	Sport(s)	Years	Year of Induction
BAUDER, Fred "Coach"	--	Coach	M-Basketball	1932-61	1989
BAKUN, Andrew I.	1982	Athlete/Asst. Coach	M-Soccer	1978-81/90-91	2005
BAKUN, Myron	1967	Athlete	M-Soccer	1964-66	1991
BLUM, Raymond E.	1950	Distinguished Alum.	Speedskating/Cycling	--	1996
BORJA, Hernan "Chico"	1981	Athlete	M-Soccer	1977-80	1986
BORNAKO, Gregory "Egor"	1970	Athlete	M-Fencing	1966-70	1987
BOWSER, Hamilton V.	1952	Athlete	M-Fencing	1948-52	1989
BRADLEY, Thomas	1978	Athlete	M-Swimming	1974-78	1990
BROWN, Andrew D.	1982	Athlete	M-Soccer	1956-78	2006
CRIMMINS, David	1952	Athlete	M-Fencing	--	2007
CRUZ, Edward	1963	Athlete	M-Soccer	1959-62	1995
DAWSON, Marilyn E.	1986	Athlete	WVB/WBKB/SB	1982-86	1991
DeNICOLA, Carmine P.	1978	Athlete	Baseball	1975-78	2005
DeVITO, Louis	1960	Athlete	M-Soccer/M-Fencing	1956-60	1992
DIAS, Joe A.	1977	Athlete	M-Soccer	1973-76	1993
DRURY, Eugene M.	1963	Athlete	M-Tennis	1960-63	1988
ENG, Katherine	1993	Athlete	W-Volleyball	1989-92	2007
ETIENNE, Yves	1979	Athlete	M-Volleyball	1976-78	1990
FEHN, Gilbert F.	1940	Athlete	M-Basketball/M-Tennis	1936-40	1992
FITZGERALD, Joseph M.	--	Coach /Asst. Coach	M-Basketball	1961-66/52-61	1986
FLEISHER, Seymour "Zoom"	1951	Athlete	M-Basketball	1947-51	1992
GAGLIARDO, Salvatore A.	1985	Athlete	M-Basketball	1981-85	1995
GALLAGHER, Thomas G.	1985	Athlete	M-Basketball	1981-85	1991
GIOVANNOLI, Arnold L.	1953	Athlete	M-Basketball	1950-53	1993
GOLDRICK PITT, Elizabeth M.	1990	Athlete	WVB/SB/WBKB/WTen	1985-90	1995
GRUENEWALD, Wendy A.	1997	Athlete	WBKB/SB/WVB/WSoc	1992-96	2003
HAASE, Jay W.	1975	Athlete	M-Fencing	1971-75	1988
HAMMOND, Kenneth W.	1979	Athlete	M-Soccer	1974-77	2003
HANDWERKER, Andy	1963	Athlete	M-Soccer	1959-62	2002
HAUSSER, Paul C.	--	Administrator	--	1953-91	1990
		Coach	Fencing /Baseball	1954-88/53-72	
HUBEY, Ali	1972	Athlete	M-Soccer	1968-71	1990
HURTADO, Fabian	1975	Athlete	M-Soccer	1970-73	1987
IRIS, Herb	1951	Benefactor	--	--	2007
KAMINSKY, Nicholas J.	1978	Athlete	Baseball	1975-78	2006
KASBARIAN, Raymond P.	1966	Founder/Athlete	Judo	1962-66	1989
KETZNER, Robert Shelby	--	Coach	Rifle	1962-86	1987
KHOWAYLO, Alex	1969	Athlete	M-Soccer	1960-63	1996
LUBETKIN, Charles "Tudy"	1953	Athlete	M-Basketball/M-Track	1949-52	1994
LYNCH, Robert K.	1984	Athlete/Coach	M-Fencing	1977-80/86-91	1993
MacDONALD, Dan	1984	Athlete	Baseball	1981-84	1991
OLSEN, Richard J.	1969	Athlete	M-Basketball	1965-69	1988
OLSON, George R.	1977	Athlete	Baseball	1974-77	1987
PAULIUS, Raymond V.	1985	Athlete	M-Soccer	1980-83	2006
ROGERS, Warren E.	1988	Athlete	M-Basketball	1983-87	1993
ROMULUS, Rudy	1991	Athlete	M-Volleyball	1988-91	1996
SARLO, Paul A.	1992	Athlete	Baseball	1989-91	2005
SCHMID, John "Gene"	--	Coach/Asst. Coach	Baseball	1973-97/68-72	2002
SIMON, J. Malcolm	--	Coach	M-Soccer	1955-83	1994
		Athletics Director	--	1983-94	
SKURLA, Peter J.	1941	Athlete	M-Basketball	1937-41	1992
SWANSON, Robert F.	--	Athletics Director	--	1947-82	1986
TAETZSCH, Robert	1952	Athlete	M-Fencing	--	2007
TAETZSCH, William	1952	Athlete	M-Fencing	--	2007
TOSATO, Lawrence P.	1956	Athlete	M-Basketball/Baseball	1952-56	1987
TUBELLO, Jeffrey	1976	Athlete	Rifle	1972-76	1988
VAN WRIGHT, Nevea	1997	Athlete	W-Basketball	1991-96	2005
WALSH, John J.	1966	Athlete	MSoc/MBKB/Baseball	1962-66	1986
WASNIEWSKI, Frank	1980	Athlete	M-Tennis	1977-80	1990
WELGOS, Bob	1962	Athlete	M-Basketball/Bowling	1959-62	2005
WOROBEC, Myron S.	1966	Athlete	M-Soccer	1962-65	1994
YONEZUKA, Yoshisada	--	Founder/Coach	Judo	1962-??	1991
ZORN, Werner	1962	Athlete	M-Soccer	1958-61	1988

1960 Men's Soccer Team

1981-82 Men's Basketball Team

1982 Baseball Team

NAIA co-national champion 1988

NJIT's first ECAC and IAC champion 1990

NJIT's second ECAC and IAC champion 1993



MARGARET MCKEON
Head Coach



SIOBHAN KILKENNY
sha-VON
Assistant Coach



MARY KACIC
KAY-sik
Assistant Coach



00 TAIWO OYELOLA
tie-WO O-yay-LO-la
F 5-11 So
Roselle, NJ



3 ALISON MILLER
G 5-7 So
Shelton, CT



5 ADRIANA JOHNSON
G 5-4 Fr
Tobyhanna, PA



10 JACKIE MCCAFFREY
G 5-8 Jr
Bronx, NY



14 KATIE PIEKIELSKI
Captain
pe-KEL-skee
G 5-10 So
Atco, NJ



15 ERIKA VELEZ
G 5-7 Sr
Garnerville, NY



21 KERI WASHINGTON
G 5-8 Fr
Ewing, NJ



23 COLLEEN VOGEL
G 5-8 So
Emerson, NJ



25 JESSICA GERALD
G 5-8 Fr
Woolwich Twp., NJ



33 JILL DICKINSON
G 5-8 Jr
Milltown, NJ



34 KATHRYN WIGHTON
WY-ton
C 6-3 Fr
Warren, NJ



50 KEHINDE "FEMI" OYELOLA
(known by first name Femi)
FEM-me O-yay-LO-la
F 5-11 So
Roselle, NJ



55 MAYA AL-SHINGIATI
MY-a AL-shin-GET-ee
F 6-1 Fr
Vienna, VA



THE 2007-08 NJIT WOMEN'S BASKETBALL TEAM

Top Row (L-R): Assistant Coach Mary Kacic, Strength & Conditioning Coach Taylor Hatcher, Femi Oyelola, Keri Washington, Maya Al-Shingiet, Kathryn Wighton, Katie Piekelski, Taiwo Oyelola, Assistant Athletic Trainer Amanda Albright, Assistant Coach Siobhan Kilkenny

Bottom Row (L-R): Adriana Johnson, Colleen Vogel, Jill Dickinson, Head Coach Margaret McKeon, Erika Velez, Alison Miller, Jessica Gerald
(Not pictured: Jackie McCaffrey)



Women's Basketball Schedule 2007-08

Date	Day	Opponent	Time
NOVEMBER			
11	Sun.	at St. Francis (NY)	2:00pm
14	Wed.	at Saint Peter's	7:00pm
17	Sat.	FAIRLEIGH DICKINSON	2:00pm
28	Wed.	UMBC	7:00pm
DECEMBER			
1	Sat.	LAFAYETTE	2:00pm
5	Wed.	PRINCETON	7:00pm
8	Sat.	at Lehigh	3:30pm
12	Wed.	LONG ISLAND	7:00pm
21	Fri.	WAGNER	1:00pm
<i>Hawks Classic (at Saint Joseph's (PA) - Philadelphia, PA)</i>			
28	Fri.	at Saint Joseph's (PA)	2:00pm
29	Sat.	Auburn/Davidson	2:00pm/4:00pm
JANUARY			
3	Thu.	COLUMBIA	7:00pm
9	Wed.	at Texas Pan-American	7:00pm (CT)
11	Fri.	vs. Cal State Bakersfield	7:00pm (CT)
		at Texas Pan-American	

Date	Day	Opponent	Time
JANUARY			
15	Tue.	CORNELL**	6:00pm
19	Sat.	LONGWOOD	2:00pm
24	Thu.	at Monmouth	7:00pm
26	Sat.	CHICAGO STATE**	3:00pm
28	Mon.	TEXAS-PAN AMERICAN	7:00pm
FEBRUARY			
7	Thu.	at Utah Valley	7:05pm (MT)
9	Sat.	at Chicago State	2:00pm (CT)
14	Thu.	MORGAN STATE	7:00pm
16	Sat.	SAVANNAH STATE	2:00pm
21	Thu.	UTAH VALLEY	7:00pm
23	Sat.	at Savannah State	2:00pm
MARCH			
2	Sun.	at Longwood	2:00pm
Independent Tournament (at Texas-Pan American - Edinburg, TX)			
<i>Teams: NJIT, Texas-Pan American, Chicago State, Utah Valley, Florida Gulf Coast, Cal State Bakersfield</i>			
6-8	Thu.-Sat.	TBA	TBA

Head Coach: Margaret McKeon (St. John's '91) **Assistant Coaches:** Siobhan Kilkenny and Mary Kacic **Strength & Conditioning Coach:** Taylor Hatcher
Home matches in **BOLD BLACK CAPS** at Estelle and Zoom Fleisher Athletic Center. **Denotes home games at the Prudential Center
Schedule is subject to change - visit www.njithighlanders.com for updated times