



Jessica Vogel  
Senior



Kelly Crowe  
Junior  
All-Met 2nd team;  
All-CACC 2nd team



Aine O'Dwyer  
Junior



Selena Kershaw  
Senior





**The NJIT Campus Center**

## NJIT FACTS

Location:	University Heights, Newark, NJ, 07102
Founded:	1881
Undergraduate Enrollment:	5,366
Nickname:	Highlanders
Colors:	Red and white
Home court (capacity):	Fleisher Athletic Center (1,500)
Affiliations:	NCAA Division I (reclassifying from NCAA Division II) Eastern College Athletic Conference Central Atlantic Collegiate Conference
Conference:	
President:	Dr. Robert A. Altenkirch
Director of Athletics:	Lenny Kaplan
Athletics Department Phone:	973-596-3636
Athletics Department Fax:	973-596-8295
Athletics Department URL:	<a href="http://athletics.njit.edu">http://athletics.njit.edu</a>
NJIT Women's Basketball Head Coach :	Kim Bowen Lusk (Southern Connecticut '99)
Career record:	46-40 (three seasons, all at NJIT)
Coach Lusk's office phone:	973-596-3633
Best time to call:	mornings
E-mail:	<a href="mailto:bowen@adm.njit.edu">bowen@adm.njit.edu</a>
Assistant Coaches:	Nicole Ballou (973-596-3636), Siobhan Kilkenny (973-596-8442)
Captains:	Selena Kershaw, Kelly Crowe
Assistant Athletic Director for Sports Information:	Tim Camp
Office phone:	973-596-8461
E-mail:	<a href="mailto:timothy.camp@njit.edu">timothy.camp@njit.edu</a>
Home phone:	201-451-1043
Assistant Sports Information Director:	Stephanie Pillari
Office phone:	973-596-8324
E-mail:	<a href="mailto:pillari@adm.njit.edu">pillari@adm.njit.edu</a>
Home phone:	201-666-5649
Sports information fax:	973-596-8440
2004-05 overall record:	18-12
CACC record/finish:	16-6/4th place
Postseason:	CACC Tournament, 1-1 (def. Dominican, NY; lost semi-final Holy Family); ECAC, 0-1 (Philadelphia University)
Starters returning/lost:	5/0
Letterwinners returning/lost:	10/3
Admissions Office Phone:	1-800-925-NJIT
Admissions Email:	<a href="mailto:admissions@njit.edu">admissions@njit.edu</a>
Online Undergraduate Application:	<a href="http://www.njit.edu/admissions/undergrad/undergrad_apply.php">http://www.njit.edu/admissions/undergrad/undergrad_apply.php</a>



Quick Facts.....	IFC
Season Outlook .....	2
The Highlanders In Division I .....	3
University Administration .....	4
Coaching Staff .....	5-6
Roster .....	7
Statistics and Results .....	8
Returning Player Profiles .....	9-19
Newcomer Profiles .....	20
About NJIT .....	21-23
Athletics Facilities .....	24
About Newark .....	25
Happenings In and Around Newark.....	26
School Records .....	27-29
All-Time Honors .....	30
Year By Year Results .....	31-32
"The Last Time".....	32
All-Time Roster .....	33
All-Time Records vs. Opponents .....	33
Opponent Information .....	34-36
Directions/Accommodations .....	37
Athletics and Physical Education Staff Directory .....	38
NJIT Hall of Fame .....	39
Central Atlantic Collegiate Conference .....	40
Team Picture .....	IBC
Schedule.....	OBC



## CREDITS

The 2005-06 NJIT Women's Basketball Guide is a production of the NJIT Sports Information Office in cooperation with the Office of University Communications. Tim Camp was the editor and principle writer, with editorial updates and research assistance by Stephanie Pillari. Thanks to the women's basketball coaching staff for their assistance and cooperation. Cover design by Johanna Moroch. Interior design by Samantha Horning. Team photography by Jim Clarke and other photos courtesy of the Office of University Communications. Opponent information and logos courtesy of opponent sports information offices. Printing by Prestige Graphics, Union, New Jersey.

## WHY THE HIGHLANDERS?

The area on which the NJIT campus sits, now known as University Heights, was formerly called the Newark Highlands. The mailing address of the University used to be on High Street, until the road was re-named Dr. Martin Luther King Jr. Boulevard.

## MEDIA INFORMATION

This guide is designed to assist the media in its coverage of New Jersey Institute of Technology women's basketball. NJIT sports information will provide an official NCAA box score 10 minutes after the conclusion of each home game, with full play-by-play available on request.

All requests for interviews with coaches and players should be made through the sports information office at (973) 596-8461. Following games, Coach Lusk and selected players will be available on the floor following the standard 10-minute cooling-off period. Visiting radio requests should be made at least two weeks in advance.



Above: NJIT's clock tower.



It's safe to say that New Jersey Institute of Technology has never felt better heading into a women's basketball season.

The Highlanders are coming off the best season in program history, as NJIT set its record for wins (18) and advanced to postseason play beyond its conference tournament for the first time (ECAC Division II Tournament).

All five starters and five others, four of whom played in at least 20 games, return from last year's record-setting squad. They are fortified by a freshman class that will provide help in the frontcourt and in the backcourt.

"We are confident we can be as good as we were last year. Hopefully, we'll be better," said fourth-year coach Kim Bowen Lusk, who has 46 wins in three seasons. "Our goal is to win the [Central Atlantic Collegiate] conference and make the ECAC's."

NJIT, which is beginning the process of reclassifying to NCAA Division I from Division II, is playing its final season in the Division II CACC. As a result, the Highlanders will not be part of the CACC postseason tournament, leaving the regular season title and an ECAC bid as the prizes for 2005-06.

Last season, the Highlanders were 16-6 in the CACC, good for fourth place, five games off the lead.

NJIT, which typically starts a three-guard lineup, is led by multi-skilled junior guard Kelly Crowe, who was All-CACC 2nd team, All-CACC Tournament and All-Met (NY) 2nd team, after averaging 16.1 points, 4 rebounds, 3.2 assists and 2.3 steals.

She made a team-best 45 three-pointers and after just two seasons ranks in the NJIT career top 10 in points (846), assists (183), steals (167) and threes (76). Not surprisingly, Crowe was voted onto this year's 10-player coaches' preseason All-CACC team.

Also voted to the preseason All-CACC team was senior 6-foot-1 post player Selena Kershaw, who led last year's team in rebounding (6.1 rpg) and barely missed averaging double-figure scoring (9.9 ppg).

A fifth-year senior, Kershaw came back strong after being an injury red-shirt in 2003-04. This year, healthy and the fittest she's been in college,

Kershaw is primed for a big finish. "Selena can be a dominant post player for us," said Lusk of the 2004-05 All-CACC 3rd team pick who was named to this year's preseason All-CACC team.

Junior Aine O'Dwyer returns up front after starting 26 games a year ago and averaging 6.8 points and 5.3 rebounds (second on the team). O'Dwyer, who has played for Ireland's under 20 National Team, is a threat inside or out.

Sophomore Jackie McCaffrey and junior Erika Velez are the other returning starters. Their 2004-05 statistics were remarkably similar—McCaffrey averaged 6.5 ppg to 6.2 ppg for Velez; Velez collected 4.4 rpg to McCaffrey's 3.9 rpg; in assists, McCaffrey had a team-leading 110 and Velez was second, with 99; and in steals, it was 62 for Velez and 59 for McCaffrey.

McCaffrey handled the demanding task of starting at point guard as a rookie. "Jackie improved a lot as last season went along," said Lusk of the player who set the program's single-game assists record, with 13, last February 25. "She has grown to where she can run our offense well and we expect her to pick up where she left off."

The versatile Velez can play either guard position.

The team's balance goes beyond the starters, where 6-foot-5 Emese Gyuricza averaged 6.8 points and 4.5 rebounds appearing in every game, averaging about 15 minutes an appearance. Gyuricza, who hails from Hungary, played two years at Division I Centenary (LA), before coming to NJIT last year.

Kate Daumer, a 6-foot sophomore, appeared in 28 games as a freshman, getting a taste of the college game with 190 minutes of action that included one start.

Senior swing players Breanna Turnbull and Jessica Vogel return, as does junior forward Eti Ebewo. Turnbull was in 26 games with four starts for the 2002-03 Highlanders, who had a 16-12 record. The Canadian had an injury-plagued 2003-04 and came back last year to appear in 20 games.

Vogel got into 24 games last year

and enters her senior season with 80 career games played, including 26 starts. She averaged 7.6 points and 4.4 rebounds through her first two seasons.

Ebewo, the 5-foot-10 junior, lends depth to the frontcourt. She has been in 39 career games, with three starts. Another junior, Denaya Hemingway, will sit out the 2005-06 season as an injury redshirt.

The freshmen could help, but 2005-06 is unlike any other for the Highlanders. "This is the first time we won't have to start a freshman," said Lusk, who has counted on rookies in each of her previous years at the helm. "We finally have a group of upperclassmen who have played."

Even though they won't be rushed, freshmen Ali Baumlin and Jill Dickinson have a chance to contribute.

Baumlin, a mobile 6-footer, scored over 1,000 points at Monroe (NJ) High School and has the potential to score in the post, rebound and defend. "Ali has been a pleasant surprise," said Lusk. "She has a chance to get some minutes."

Dickinson, a 5-foot-9 guard from Milltown in Central New Jersey, was a 1,000-point scorer at Spotswood High School and offers NJIT another outside threat.

A third freshman is 5-foot-10 swing player Brittany Monio, who played her high school ball in Stillwater, Minnesota.

In Lusk's first year, she led the team to a 16-12 record, matching the old record for most wins. A year later, with injuries intervening, the Highlanders slipped to 12-16. Then came the 2004-05 breakthrough, with a record 18 wins and the ECAC berth.

"I feel 100% comfortable with this team," said the coach. "We've been together as players and staff for as much as four years. This should be our best year."

In addition to this year's goals, the 2005-06 Highlanders will lay the groundwork for the huge change that comes with the reclassification to Division I. Next year, the team will play a Division I schedule for the first time, with full Division I championship eligibility arriving in the 2009-10 season.



New Jersey Institute of Technology athletics is on the move to the top level of college athletics--NCAA Division I.

The exciting news came this summer, when the NCAA gave NJIT the green light to reclassify its entire athletics program from Division II to Division I, a four-year process that will bring all Highlander sports to full Division I status and championship eligibility in 2009-10.

Two sports—men's soccer and women's soccer—are paving the way under NCAA rules that allow Division II or Division III schools to elevate one sport in each gender to Division I in a process that takes two years to complete.

NJIT men's soccer is already a full member of NCAA Division I, having arrived at championship eligibility in the 2005 season. The men's journey to the top level began in 2003, under the NCAA's two-year single-sport per gender reclassification process. Highlanders women's soccer is begin-

ning a similar two-year process in 2005, with full Division I status and championship eligibility arriving in the 2007 season.

The larger process of advancing the entire program to NCAA I takes four years to complete and includes application, a detailed strategic plan and in-depth annual review of the institution's progress in moving toward its goal of complying with NCAA Division I rules and building a strong, broad-based athletics program.

New Jersey Institute of Technology's move to Division I has moved quickly since the November 2002 discussions among President Robert A. Altenkirch, Vice President Joel Bloom and Athletics Director Lenny Kaplan.

From there, came a proposal from Dr. Altenkirch to the Board of Trustees, which unanimously approved in February 2003 a plan to reclassify men's soccer to Division I. Little more than two years later, the NCAA has approved NJIT's proposal to advance its

entire 15-sport program to Division I.

Along the way, scholarship and operating budgets have been enhanced, with expanded coaching staffs, increased scholarship dollars and upgraded facilities for competition and practice.

Upgrading athletics has been a priority for Dr. Altenkirch since he was selected as the seventh President of NJIT in May 2002.

"As NJIT continues to grow academically, and as a residential university, strengthening the athletics program through the transition to Division I will allow us to align the university athletically with our academic peers," said Altenkirch. "It will also enable us to recruit the best and brightest student-athletes, improve athletics facilities available to the entire NJIT community, gain regional and national visibility, and build strong linkages with students that will carry over to their days as alumni."

*Lubetkin Field was site of the first Division I competition at NJIT on September 1, 2004, when the men's soccer team hosted Monmouth University.*





## Dr. Robert A. Altenkirch

### *President*

Dr. Robert A. Altenkirch, formerly vice president for research at Mississippi State University (MSU), joined NJIT as the university's seventh president in July 2002. During his tenure as MSU vice president for research, science and engineering, expenditures as reported to National Science Foundation (NSF) increased dramatically—75% from 1997 to 2001.



Prior to his appointment as vice president at MSU, Altenkirch served as professor of mechanical and materials engineering and dean of the College of Engineering and Architecture at Washington State University. From 1988 to 1995, he was professor of mechanical engineering and dean of the College of Engineering at MSU. He also served as professor and chair of mechanical engineering at the University of Kentucky.

In addition to the research program, his responsibilities encompassed congressional relations, intellectual property management and economic development. While dean of engineering at MSU, he led the effort to secure National Science Foundation funding for the establishment of the MSU NSF Engineering Research Center for Computational Field Simulation in

1990. Additionally, the Center was instrumental in helping the State of Mississippi attract a \$1 billion Nissan manufacturing plant.

Altenkirch holds a PhD from Purdue University, an MS from the University of California, Berkeley, and a BSME from Purdue, all in mechanical engineering. He is the author of over 50 publications and nearly 100 presentations in combustion and heat transfer and served as principal investigator for ten Space Shuttle experiments investigating the spread of fire in reduced gravity. He is a Fellow of the American Society of Mechanical Engineers.

## Dr. Joel Bloom

### *Vice President of Academic and Student Services*

Dr. Joel Bloom has worked at NJIT since July 1990. In his current position, he is responsible for nine divisions of the university, including Physical Education and Athletics.



Dr. Bloom is also Dean of the Albert Dorman Honors College, which enrolls more than 525 students who are typically in the top 10 percent of their high school graduating class.

Prior to NJIT, Dr. Bloom spent seven years as assistant Commissioner in the New Jersey Department of Education. He is currently the Chair of

the NASULGC Council of Chief Student Affairs Officers and the Newark Consortium Board for Pre-College Education.

Dr. Bloom earned his Bachelor's and Master's Degrees from Hunter College, and holds a Master's and Doctorate from Columbia University Teachers College.

## Lenny Kaplan

### *Director of Athletics*

After serving 11 years in the athletics department at Division-I Manhattan College, Lenny Kaplan was appointed in August 2000 to head NJIT's division of physical education and athletics.



Kaplan is a 1988 graduate of St. John's University with a degree in athletics administration. After three years as Manhattan's director of operations, he served as an assistant athletics director with the Jaspers from 1991-2000.

Kaplan is the Central Atlantic Collegiate Conference Executive Committee Supervisor for men's basketball, and serves on the NCAA Division II nominating committee, the D-II Women's Soccer Regional Advisory Committee, and the Eastern Intercollegiate Volleyball Association Executive Committee.

Kaplan resides in Merrick, New York, with his wife, Nancy, and their sons, Michael and Joshua.



# Kim Bowen Lusk

## Head Coach

THIRD SEASON AT NJIT, (Won 46, Lost 40)

In just three seasons as head coach, Kim Bowen Lusk has led New Jersey Institute of Technology women's basketball to unprecedented success.



Lusk's third season (2004-05) saw the Highlanders post a program-best 18 wins and earn NJIT women's basketball its first postseason berth beyond its own conference tournament (2005 Eastern College Athletic Conference Division II Championship Tournament).

With a combined three-year record of 46-40, Lusk is the winningest career coach in the young program's history.

NJIT began women's basketball at the Division III level in 1986-87 and moved up to Division II in 1997-98. Now, the Highlanders are reclassifying to NCAA Division I.

In her first season (2002-03), during which her title was Interim Head Coach, she guided NJIT to a 16-12 record, tying the existing school record

for victories in a season. Along the way, those Highlanders advanced to the semifinals of the Central Atlantic Collegiate Conference Tournament.

The "interim" tag was removed from her coaching title in April 2003 and she promoted to Assistant Director of Athletics at the same time.

In Lusk's second season, the injury-embattled 2003-04 Highlanders dipped to 12-16, but they bounced back for the record-setting success of 2004-05, winning a record 18 games and advancing to play in the ECAC Tournament after splitting two games in the CACC conference tournament.

Lusk was named interim head coach in September 2002 after one season as first assistant coach under Sharon Manning Beverly, who headed NJIT's women's basketball program from 1999-2000 to 2001-02. Prior to NJIT, Lusk spent two years as a graduate assistant at the University of New Haven.

Lusk was a four-year swing player and two-year captain at Southern Connecticut State University, graduating in 1999 with a bachelor's degree in psychology. She holds the Owls' school record for assists in a game, dishing out 15 against Albertus Magnus College during her junior season.

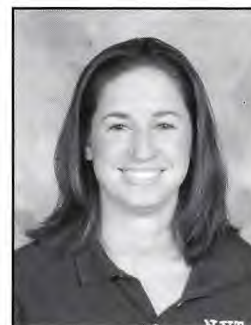
A native of Valhalla, New York, Lusk earned a master's of business administration with a concentration in sports management from New Haven in 2001.

She resides in Dobbs Ferry, New York with her husband, Jim, and daughter, Madison, who was born on March 1, 2005, the date of NJIT's first ECAC postseason game. Kim and Jim are expecting the arrival of their second child in late April 2006.

# Nicole Ballou

## Assistant Coach

The first time you meet Nicole Ballou, you might not guess that she was a highly successful college basketball player. Listed at 5-foot-2 in her playing days, she was a player who combined determination and guile to stand out on the basketball court, ranking as one of the top players to come through the women's basketball program at New Jersey Institute of Technology.



Today, she applies many of the same qualities that guided her success as a player and student to her growing career as a coach, which began in 2003, as she moved smoothly from the court to the bench as an assistant at NJIT.

In 2002-03, she was the senior starting point guard and co-Most Valuable Player of a team that tied the existing record for most wins in program history (16).

In 2003, she graduated from NJIT as a dean's list student and moved directly into coaching. At the end of her second year as an assistant coach, the Highlanders had a new school record for wins (18) and had advanced beyond

## KIM BOWEN LUSK'S COACHING TIMELINE

YEAR	SCHOOL	RECORD	NOTES
1999-01	New Haven		Assistant Coach
2001-02	NJIT		Assistant Coach
2002-03	NJIT	16-12	Interim head coach; tied existing school record for wins
2003-04	NJIT	12-16	Named full-time head coach
2004-05	NJIT	18-12	School record for wins; made ECAC Division II Championship Tournament



their conference tournament in post-season play for the first time.

A four-year starter at point guard and two-year captain, Nicole Ballou never missed a game and she completed her career as the all-time leader in games played (109), assists (396) and steals (193).

Her 12 assists in a game vs. Felician on January 15, 2002 also ranked as the school record until it was broken in February 2005 by Jackie McCaffrey (13 vs. Georgian Court).

The Staten Island, NY, native came to NJIT after a fine scholastic career at Notre Dame Academy, where she collected a slew of captaincies and MVP and sportsmanship awards, while starring in softball and cross country in addition to basketball.

Ballou was NJIT's New Jersey Association of Intercollegiate Athletics for Women Woman of the Year in 2002. She earned her bachelor's degree in management from NJIT in 2003 and is pursuing an MBA in operations management from New Jersey's Science & Technology University. She also assists the sports information office and coordinates the Junior Highlander Kids Club.

## Siobhan Kilkenny *Assistant Coach*

An international player for her native Ireland and a former collegiate star stateside, Siobhan Kilkenny joined the New Jersey Institute of Technology women's basketball coaching staff for the 2005-06 season.

Kilkenny, a 2003 graduate of Manhattan College (bachelor of science degree in physical education), is a member of the Irish Senior National women's basketball team and has been part of her nation's national team program since 1994.

She represented Ireland in the 2001 and 2004 Women's European Basketball Championships and was the 2003 Irish International Player of the Year.



While at Manhattan, she was named Most Valuable Player of the 2003 Metro Atlantic Athletic Conference Tournament after leading her team to the championship and an automatic berth in the NCAA Division I Tournament.

Also that year, she was an All-MAAC 2nd team honoree for the regular season and was also named to the All-Met (NY) 2nd team. A strong all-around player at shooting guard and small forward, Kilkenny averaged 12 points, 6 rebounds and 2.7 steals per game as a senior, placing her among the conference leaders in all three categories, including third place in steals.

She is fourth on Manhattan's all-time career steals list (202) and was named to the Big Apple Classic first team in 2001 and 2002.

Prior to accepting her position on the NJIT coaching staff, Kilkenny was playing professional women's basketball for the Pabellon Ourense (Spain) club team.

While NJIT is her first college coaching assignment, she has extensive experience working at summer camps

and also coached girls basketball with the Castlebar Rockets club team in her hometown and also in Westchester County, NY.

A member of the Women's Basketball Coaches Association and the American Alliance for Health, Physical Education, Recreation and Dance, Kilkenny is active in Metropolitan New York women's soccer and Gaelic football leagues.

She has teaching experience in schools in Westchester County, NY, as well as having done student teaching in Westchester and in the Riverdale section of the Bronx, NY. She is also American Red Cross certified in First Aid and CPR.

## Dayana Escalante Angelica Sepulveda *Managers*

NJIT juniors Dayana Escalante and Angelica Sepulveda return for their second seasons as women's basketball managers.

Escalante of Waldwick, NJ, maintains a GPA over 3.0, majoring in architecture.

Sepulveda, also an architecture major with a GPA over 3.0, spent the fall of 2005 as a goalkeeper on NJIT's women's soccer team. A versatile athlete, she took part in cross country as a freshman.

## ALL-TIME COACHING RECORDS

*(ranked by career wins)*

NAME	WON	LOST	PCT.	SEASONS
Kim Bowen Lusk	46	40	.535	3 (2002-present)
Brenda Zabriskie-DeNure	44	64	.407	5 (1990-95)
Sharon Manning Beverly	30	51	.370	3 (1999-2002)
Kim Barnes Arico	16	37	.302	2 (1997-99)
Maureen O'Neil	16	5	.762	1 (1995-96)
Bill McColl	7	15	.318	1 (1996-97)
Dave DeNure	2	11	.154	1 (1987-88)
John Speiss	0	15	.000	1 (1986-87); (NJIT's first season)
Bill Avant	0	12	.000	1 (1989-90)
<b>TOTAL</b>	<b>161</b>	<b>250</b>	<b>.392</b>	<b>18 (1986-pres.)</b>



## ALPHABETICAL

No.	Name	Yr.	Pos.	Ht.	Hometown/High School (Previous College)
31	Baumlin, Ali	Fr	F	6-0	Monroe, NJ/Monroe Township
21	Crowe, Kelly	Jr	G	5-9	Wayne, PA/Upper Merion Area
32	Daumer, Kate	So	F	6-0	Macungie, PA/Emmaus
22	Dickinson, Jill	Fr	G	5-9	Milltown, NJ/ Spotswood
50	Ebewo, Etieme	Jr	F	5-10	Parlin, NJ/Old Bridge
42	Gyuricza, Emese	Sr	C	6-5	Szolnok, Hungary/Mt. Pleasant Area, PA (Centenary, LA)
55	Hemingway, Denaya	Jr	G/F	5-9	Jersey City, NJ/Ferris
30	Kershaw, Selena	Sr	C	6-1	South Orange, NJ/Columbia
11	McCaffrey, Jackie	So	G	5-8	Bronx, NY/The Masters School
23	Monio, Brittany	Fr	G/F	5-10	Stillwater, MN/Stillwater
10	O' Dwyer, Aine	Jr	G/F	5-10	Tipperary, Ireland/Scoil Ruain
5	Turnbull, Breanna	Sr	G/F	5-11	Kingston, ONT/Frontenac Secondary
15	Velez, Erika	Jr	G	5-7	Garnerville, NY/North Rockland
20	Vogel, Jessica	Sr	G/F	5-10	Shamong, NJ/Shawnee

## NUMERICAL

No.	Name	Yr.	Pos.	Ht.	Hometown/High School (Previous College)
5	Breanna Turnbull	Sr	G/F	5-11	Kingston, ONT/Frontenac Secondary
10	Aine O' Dwyer	Jr	G/F	5-10	Tipperary, Ireland/Scoil Ruain
11	Jackie McCaffrey	So	G	5-8	Bronx, NY/The Masters School
15	Erika Velez	Jr	G	5-7	Garnerville, NY/North Rockland
20	Jessica Vogel	Sr	G/F	5-10	Shamong, NJ/Shawnee
21	Kelly Crowe	Jr	G	5-9	Wayne, PA/Upper Merion Area
22	Jill Dickinson	Fr	G	5-9	Milltown, NJ/ Spotswood
23	Brittany Monio	Fr	G/F	5-10	Stillwater, MN/Stillwater
30	Selena Kershaw	Sr	C	6-1	South Orange, NJ/Columbia
31	Ali Baumlin	Fr	F	6-0	Monroe, NJ/Monroe Township
32	Kate Daumer	So	F	6-0	Macungie, PA/Emmaus
42	Emese Gyuricza	Sr	C	6-5	Szolnok, Hungary/Mt. Pleasant Area, PA (Centenary, LA)
50	Etieme Ebewo	Jr	F	5-10	Parlin, NJ/Old Bridge
55	Denaya Hemingway	Jr	G/F	5-9	Jersey City, NJ/Ferris

Head Coach: Kim Bowen Lusk (Southern Connecticut '99), 4th year

Assistant Coaches: Nicole Ballou, Siobhan Kilkenny

The 2005-06 NJIT women's basketball coaching staff (l-r): assistant coach Nicole Ballou; head coach Kim Bowen Lusk; assistant coach Siobhan Kilkenny





2004-05 Women's Basketball  
NJIT Combined Team Statistics  
All games

<b>RECORD:</b>	<b>OVERALL</b>	<b>HOME</b>	<b>AWAY</b>	<b>NEUTRAL</b>
<b>ALL GAMES.....</b>	<b>(18-12)</b>	<b>(10-3)</b>	<b>(7-7)</b>	<b>(1-2)</b>
<b>CONFERENCE.....</b>	<b>(16-6)</b>	<b>(9-2)</b>	<b>(7-4)</b>	<b>(0-0)</b>
<b>NON-CONFERENCE.....</b>	<b>(2-6)</b>	<b>(1-1)</b>	<b>(0-3)</b>	<b>(1-2)</b>

##	Player	GP-GS	Min--Avg	---TOTAL---		---3-PTS---		---REBOUNDS---		PF	FO	A	TO	Blk	Stl	Pts	Avg
				FG-FGA	Pct	3FG-FGA	Pct	FT-FTA	Pct								
21	CROWE, Kelly.....	30-30	930 31.0	148-404	.366	45-131	.344	141-195	.723	40	80	120	4.0	71	0	97	16.1
30	KERSHAW, Selena....	30-25	619 20.6	119-269	.442	0-0	.000	58-88	.659	92	92	184	6.1	90	1	22	9.9
10	O'DWYER, Aine.....	30-26	724 24.1	92-201	.458	2-7	.286	17-34	.500	58	100	158	5.3	58	1	68	6.8
42	GYURICZA, Emese....	29-5	417 14.4	86-172	.500	0-0	.000	25-33	.758	51	80	131	4.5	65	2	21	6.8
11	McCAFFREY, Jackie..	30-30	980 32.7	61-167	.365	9-30	.300	63-91	.692	38	78	116	3.9	69	0	110	6.5
14	NEIRA, Lisa.....	30-4	566 18.9	64-155	.413	17-57	.298	33-38	.868	2	48	50	1.7	37	0	46	5.9
15	VELEZ, Erika.....	28-27	764 27.3	67-141	.475	5-19	.263	35-63	.556	39	85	124	4.4	79	1	99	6.2
31	LUPO, Jackie.....	30-2	455 15.2	51-157	.325	25-82	.305	24-36	.667	33	57	90	3.0	31	0	17	5.0
32	DAUMER, Kate.....	28-1	190 6.8	19-48	.396	0-0	.000	3-6	.500	11	23	34	1.2	19	0	7	1.5
20	VOGEL, Jessica.....	24-0	166 6.9	15-55	.273	1-9	.111	1-3	.333	7	17	24	1.0	7	0	8	1.3
55	HEMINGWAY, Denaya..	15-0	58 3.9	8-20	.400	0-1	.000	12-22	.545	5	3	8	0.5	6	0	1	1.9
05	TURNBULL, Breanna..	20-0	102 5.1	8-19	.421	0-0	.000	4-9	.444	6	11	17	0.9	9	0	6	1.0
50	EBEWO, Eti.....	16-0	53 3.3	7-20	.350	0-0	.000	3-7	.429	0	16	16	1.0	15	0	1	1.1
TEAM.....										57	67	124	4.1	1	11		
Total.....		30	6024	745-1828	.408	104-336	.310	419-625	.670	439	757	1196	39.9	557	5	503	67.1
Opponents.....		30	5981	631-1724	.366	98-352	.278	449-665	.675	445	740	1185	39.5	496	14	347	60.3

TEAM STATISTICS	NJIT-W	OPP	DATE	OPPONENT	W/L	SCORE	ATTEND
SCORING.....	2013	1809	11/15/04	ASSUMPTION	L	48-54	249
Points per game.....	67.1	60.3	11-19-04	vs East Stroudsburg	W	66-55	100
Scoring margin.....	+6.8	-	11-20-04	at Kutztown	LOT	68-69	103
FIELD GOALS-ATT.....	745-1828	631-1724	*11/30/04	at Felician	W	65-55	200
Field goal pct.....	.408	.366	*12/2/04	GOLDEY-BEACOM	W	98-72	327
3 POINT FG-ATT.....	104-336	98-352	*12/04/04	HOLY FAMILY	L	53-73	205
3-point FG pct.....	.310	.278	*12/7/04	at Post	W	62-49	194
3-pt FG made per game..	3.5	3.3	*12/11/04	at USP	L	55-70	105
FREE THROWS-ATT.....	419-625	449-665	#12/29/04	at Bryant	L	59-70	115
Free throw pct.....	.670	.675	*12/30/04	vs American International	L	58-77	101
REBOUNDS.....	1196	1185	*1/5/05	WILMINGTON (DE)	L	72-74	87
Rebounds per game.....	39.9	39.5	*1/11/05	at Caldwell	W	70-52	117
Rebounding margin.....	+0.4	-	*01/15/05	at Bloomfield	L	68-84	-
ASSISTS.....	503	347	*1/18/05	DOMINICAN (NY)	W	47-35	125
Assists per game.....	16.8	11.6	*1/20/05	at Nyack	W	73-46	250
TURNOVERS.....	545	637	*1/25/05	FELICIAN	W	62-56	49
Turnovers per game.....	18.2	21.2	*1/27/05	at Goldey-Beacom	W	83-54	118
Turnover margin.....	+3.1	-	*1/29/05	at Holy Family	L	59-77	150
Assist/turnover ratio..	0.9	0.5	*2/1/05	POST	W	77-49	69
STEALS.....	337	260	*2/5/05	USP	W	61-44	198
Steals per game.....	11.2	8.7	*2/8/05	GEORGIAN COURT	W	71-63	69
BLOCKS.....	85	132	*2/12/05	at Wilmington (DE)	L	69-78	-
Blocks per game.....	2.8	4.4	*2/15/05	CALDWELL	W	77-56	109
WINNING STREAK.....	0	-	*2/19/05	BLOOMFIELD	W	73-55	127
Home win streak.....	9	-	*2/22/05	at Dominican (NY)	W	68-64	200
ATTENDANCE.....	1954	2253	*2/25/05	NYACK	W	73-40	97
Home games-Avg/Game....	13-150	14-147	*2/26/05	at Georgian Court	W	82-52	250
Neutral site-Avg/Game..	-	3-67	\$3/2/05	DOMINICAN (NY)	W	67-45	243
			\$3/4/05	vs Holy Family University	L	73-84	-
			*03-11-05	at Philadelphia U.	L	56-63	250

\* = Conference game

^ Kutztown University Classic

# Comfort Suites Holiday Classic at Bryant

\$ CACC Tournament

! ECAC Tournament at Philadelphia

NJIT.....	986	1018	9	-	2013
Opponents.....	867	938	10	-	1815



21

# KELLY CROWE

Junior • Guard • 5-9  
Wayne, PA/Upper Merion Area HS



Co-captain and go-to player in the backcourt. ... After just two seasons, ranks among the school top 10 career leaders in points, assists, steals and three-point field goals. ... Voted to the coaches' 10-player Preseason all-Central Atlantic Collegiate Conference team.

**2004-05:** All-Met Writers 2nd team. ... All-CACC 2nd team. ... All-CACC Tournament. ... Started all 30 games. ... averaged 16.1 points, 3.2 assists and 2.3 steals. ... shot team-best .344 from three-point range and .723 from the foul line. ... Scored a high of 31 points vs. eventual champion Holy Family in the CACC Tournament (3/4).

**2003-04:** Second-team All-Met Writers ... team MVP. ... set single-season school record for steals with 94... averaged team-high 13.0 points, 5.1 rebounds, 3.1 assists and 3.4 steals ... scored 32 points in double-overtime win over Teikyo Post (2/4). ... NJIT's Female Newcomer of the Year.

**Prior to NJIT:** All-time leading scorer at Upper Merion HS (1,324 points) ... also holds school career record for steals... teams won back-to-back league titles under coach Tom Schurtz ... all-league in soccer, basketball and volleyball ... won three league titles in volleyball... was named school's most athletic female as a senior ... played AAU basketball for coach Kim Gredzinski's Fencor program.

**Personal:** Kelly Elizabeth Crowe. ... Daughter of Jim and Glenn Crowe. ... majoring in applied mathematics. ... student in NJIT's Albert Dorman Honors College ... born 1/16/85 in Philadelphia, PA.

**Coach Lusk on Crowe:** "Kelly is a versatile guard who can score in many ways. We will look for her leadership on both ends of the court this year. She has worked hard in the off-season and has improved both mentally and physically."

## CAREER HIGHS

<b>POINTS</b>	32	at Teikyo Post	2/4/04
<b>REBOUNDS</b>	11	vs. Goldey-Beacom	1/27/05
<b>ASSISTS</b>	6	nine times	
<b>BLOCKS</b>	2	at Kutztown	12/30/03
<b>STEALS</b>	10	at Post	2/7/04
<b>3-POINTERS</b>	4	vs. Bloomfield	2/19/05
<b>MINUTES</b>	48*	at Teikyo Post	2/4/04

\*school record

Year	GP/GS	FG-FGA	%	3FG-A	%	FT-FTA	%	Reb-Avg	Pts-Avg	A-Blk-Stl
2003-04	28/28	122-363	.336	31-110	.282	89-158	.563	143-5.1	364-13.0	86-6-94*
2004-05	30/30	148-404	.336	45-131	.344	141-195	.723	120-4.0	482-16.1	97-5-70
<b>Total</b>	<b>58/58</b>	<b>270-767</b>	<b>.352</b>	<b>76-241</b>	<b>.315</b>	<b>230-353</b>	<b>.652</b>	<b>263-4.5</b>	<b>846-14.6</b>	<b>183-11-167</b>

\*school record





## SELENA KERSHAW

Senior • Forward/Center • 6-1  
South Orange, NJ/Columbia HS



Fifth-year senior co-captain is a major presence in the low post on both ends of the court. ... Voted to the coaches' 10-player Preseason all-Central Atlantic Collegiate Conference team.

**2004-05:** All-CACC third team. ... Led NJIT in rebounding (6.1 rpg) and blocks (23). ... Appeared in 30 games, starting 25. ... averaged 20.6 mins and 9.9 points. ... scored a season-high 21 points vs. Holy Family on 1/29/05.

**2003-04:** Started the first three games before suffering a season-ending ankle injury. ... named to all-tournament team at Assumption Tip-Off Mixer. ... was granted a medical red-shirt season.

**2002-03:** Appeared in 26 games, starting 13. ... averaged 6.2 points and a team-high 6.5 rebounds. ... had 4 double-doubles.

**2001-02:** Set school single-season record for field-goal percentage (.480) as a freshman. ... led NJIT in rebounding (8.1 pg) and blocks (34). ... also averaged 11.2 points in 26 games ... had seven double-doubles. ... career-high 25 points vs. Caldwell 1/26.

**Prior to NJIT:** Won two state championships at Columbia High for coach Johanna Wright... also played for the AAU Newark Panthers and coach Brad Howard.

**Personal:** Selena Rachel Kershaw ... Daughter of Kim and Sandra Kershaw... father, Kim, and uncle, Gerald Kershaw, are NJIT graduates. ... majoring in information technology. ... born 1/17/83 in Livingston, NJ.

**Coach Lusk on Kershaw:** "Selena is a talented post player who knows who to score with her back to the basket. We are looking to her for consistency in scoring and rebounding. She should lead our inside game, as well as give us good leadership on the court."

### CAREER HIGHS

<b>POINTS</b>	25	vs. Caldwell	1/26/02
<b>REBOUNDS</b>	16	at Eckerd	12/30/02
<b>ASSISTS</b>	2	vs. Bloomfield	2/15/03
		at Bloomfield	1/14/03
<b>BLOCKS</b>	4	at Philadelphia U.	3/11/05
	4	at Goldey-Beacom	1/20/02
<b>STEALS</b>	5	vs. Bloomfield	2/19/05
<b>3-POINTERS</b>	0		
<b>MINUTES</b>	40	vs. Caldwell	1/26/02

Year	GP/GS	FG-FGA	%	3FG-A	%	FT-FTA	%	Reb-Avg	Pts-Avg	A-Blk-Stl
2001-02	26/21	109-227	.480	0-0	---	72-124	.581	210-8.1	290-11.2	7-34-17
2002-03	26/13	67-152	.441	0-0	---	28-65	.431	168-6.5	162-6.2	12-18-19
2003-04*	3/3	12-27	.444	0-0	---	4-9	.444	15-5.0	28-9.3	1-3-2
2004-05	30/25	119-269	.442	0-0	---	58-88	.659	184-6.1	269-9.9	22-23-31
<b>Total</b>	<b>85/62</b>	<b>307-675</b>	<b>.455</b>	<b>0-0</b>	<b>---</b>	<b>154-286</b>	<b>.538</b>	<b>497-5.8</b>	<b>776-9.1</b>	<b>42-78-69</b>

\* granted medical redshirt season



5

**BREANNA TURNBULL**Senior • Guard/Forward • 5-11  
Kingston, Ontario/Frontenac Secondary School

Aiming for an increased role in her senior season.

**2004-05:** Appeared in 20 games as a reserve for the record-setting 18-win Highlanders ... averaged 5.1 minutes per game in her 20 appearances.

**2003-04:** Missed most of preseason and the first seven games due to injury ... in 16 games, averaged 2.6 points and 1.2 rebounds in 6.5 minutes.

**2002-03:** Made four starts among her 26 appearances for a team that was 16-12 ... in 17.9 minutes per game, averaged 4.5 points, 3.6 rebounds and 1.2 assists.

**Prior to NJIT:** Rookie of the Year, four-year captain and four-time MVP for coach Tim McCue at Frontenac Secondary... team won 2001 provincial championship... earned B'nai B'rith award and had the top accounting mark in her graduating year... also played soccer... played for her father, Tom Turnbull, on the Kingston Magic club team.

**Personal:** Breanna M. Turnbull. ... Daughter of Tom and Holly Turnbull... Comes from a basketball family, having been coached by her dad, while sister, Taryn, was a scholarship basketball player at Division I Tulane and brother, Stuart, plays at Carleton University in Canada. ... Breanna is majoring in management ... student in NJIT's Albert Dorman Honors College ... born 4/15/83 in Kingston, Ontario.

**Coach Lusk on Turnbull:** "Bre is a hard worker who provides us with depth in the guard position. She is a tall guard who can create some match up difficulties and should see significant time off the bench."

**CAREER HIGHS**

<b>POINTS</b>	12	vs. USP	1/5/03
<b>REBOUNDS</b>	11	vs. La Roche	11/23/02
<b>ASSISTS</b>	5	vs. Georgian Court	2/19/03
<b>BLOCKS</b>	1	six times	
<b>STEALS</b>	4	at Wilmington	12/4/02
<b>3-POINTERS</b>	0		
<b>MINUTES</b>	34	vs. La Roche	11/23/02

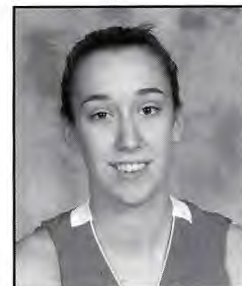
Year	GP/GS	FG-FGA	%	3FG-A	%	FT-FTA	%	Reb-Avg	Pts-Avg	A-Blk-Stl
2002-03	26/4	45-112	.402	0-2	.000	27-49	.551	94-3.6	117-4.5	29-3-19
2003-04	16/0	13-27	.481	0-0	---	16-23	.696	19-1.2	42-2.6	7-3-6
2004-05	20/0	8-19	.421	0-0	---	4-9	.444	17-0.9	20-1.0	6-0-2
<b>Total</b>	<b>62/4</b>	<b>66-158</b>	<b>.418</b>	<b>0-2</b>	<b>.000</b>	<b>47-81</b>	<b>.580</b>	<b>130-2.1</b>	<b>179-2.9</b>	<b>42-6-27</b>





## JESSICA VOGEL

Senior • Guard/Forward • 5-10  
Shamong, NJ/Shawnee HS



Offers valuable veteran experience that includes 26 career starts to a deep backcourt, with the ability to help at shooting guard.

**2004-05:** Appeared in 24 games, scoring 32 points, with 8 assists and 3 steals.

**2003-04:** Appeared in all 28 games with 17 starts... accumulated 7.6 points and 4.2 rebounds per game... recorded first career double-double vs. Felician (2/24).

**2002-03:** Played in all 28 games, starting nine... averaged 7.0 points and 4.6 rebounds in 23.3 minutes per game... leading returning free-throw shooter (.710).

**Prior to NJIT:** Second-team all-league, Unsung Hero Award and captain's award winner for coach Gina Santone at Shawnee HS. ... three-time league player of the week ... National Honor Society member ... was on school honor roll every semester ... also participated in track and field.

**Personal:** Jessica Rose Vogel. ... Daughter of Paul and Loretta Vogel... father, Paul, played at current Central Atlantic Collegiate Conference rival Dominican College ... majoring in mechanical engineering ... vice president of NJIT's chapter of the American Society of Mechanical Engineers and member of the Student Activities Council... born 5/7/84 in Belleville, NJ.

**Coach Lusk on Vogel:** "Jess has the ability to create her own shot and should see significant time off the bench."

### CAREER HIGHS

<b>POINTS</b>	18	vs. USP	2/10/04
		vs. Wilmington	12/3/03
<b>REBOUNDS</b>	13	vs. Bloomfield	2/15/03
<b>ASSISTS</b>	6	at Wilmington	2/21/04
<b>BLOCKS</b>	1	four times	
<b>STEALS</b>	3	vs. Nyack	1/28/03
		vs. La Roche	11/23/02
<b>3-POINTERS</b>	2	six times	
<b>MINUTES</b>	34	vs. Stonehill	11/22/02

Year	GP/GS	FG-FGA	%	3FG-A	%	FT-FTA	%	Reb-Avg	Pts-Avg	A-Blk-Stl
2002-03	28/9	82-235	.349	11-47	.234	22-31	.710	130-4.6	190-7.0	27-0-23
2003-04	28/17	87-227	.383	17-50	.340	21-36	.583	118-4.2	212-7.6	51-3-17
2004-05	24/0	15-55	.273	1-9	.111	1-3	.333	24-1.8	32-1.3	8-1-3
<b>Total</b>	<b>80/26</b>	<b>102-517</b>	<b>.197</b>	<b>29-106</b>	<b>.274</b>	<b>44-70</b>	<b>.629</b>	<b>272-3.4</b>	<b>441-5.5</b>	<b>86-4-43</b>





## EMESE GYURICZA

Senior • Center • 6-5  
Szolnok, Hungary/Mt. Pleasant (PA) Area HS



Believed to be the tallest player in program history, she presents matchup problems for opponents on both ends of the floor.

**2004-05:** Appeared in 29 of the team's 30 games, starting five. ... Averaged less than 15 minutes per game, but tied for third on the team in scoring (6.8 ppg) and was third in rebounding (4.5 rpg). Her 22 blocked shots were second on the team.

**Prior to NJIT:** Former member of Hungarian U-17 national team ... National Honor Society member at Mt. Pleasant (PA) High School, where she participated in basketball and threw the discus and shot put for the track and field team ... played two seasons at Centenary, a Division I school in Louisiana.

**Personal:** Daughter of Ferenc Gyuricza and Livia Paksi ... architecture major ... born 8/5/84 in Szolnok, Hungary.

**Coach Lusk on Gyuricza:** "Mesi may be the tallest player in our conference. She has the ability to turn and shoot over people as well as step out and shoot. She will be expected to come off the bench and make her presence known."

### CAREER HIGHS\*

<b>POINTS</b>	18	at Caldwell	1/11/05
<b>REBOUNDS</b>	9	at Post	12/7/04
<b>BLOCKS</b>	4	vs. Caldwell	2/15/05

\*2004-05 for NJIT

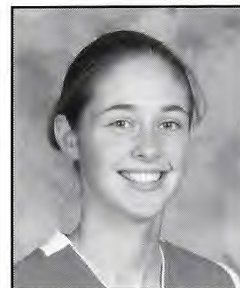
Year	GP/GS	FG-FGA	%	3FG-A	%	FT-FTA	%	Reb-Avg	Pts-Avg	A-Blk-Stl
<b>At Centenary (LA)</b>										
2002-03	24/6	12-28	.429	0-0	---	4-6	.667	25-1.0	28-1.2	3-7-1
2003-04	11/0	2-6	.333	0-0	---	0-0	---	8-0.7	4-0.4	3-2-2
<b>Total</b>	<b>35/6</b>	<b>14-34</b>	<b>.412</b>	<b>0-0</b>	<b>---</b>	<b>4-6</b>	<b>.667</b>	<b>33-0.9</b>	<b>32-0.9</b>	<b>6-9-3</b>
<b>At NJIT</b>										
2004-05	29/5	86-172	.500	---	---	25-33	.758	131-4.5	197-6.8	21-22-6



10

## ÁINE O'DWYER

Junior • Guard/Forward • 5-10  
Tipperary, Ireland/Scoil Ruain



Strong and versatile player who can operate close to the basket or on the perimeter.

**2004-05:** Played in all 30 games, starting 26. ... Tied for third on the team in scoring (6.8 ppg) and was second in rebounding (5.3 rpg). ... third on the team from the field, shooting 46 percent ... scored a high of 19 points vs. Nyack (2/25/05).

**2003-04:** NJIT's leading rebounder (7.6 pg) and also averaged 8.6 points... posted six double-figure rebound games and four double-doubles... 18 points and 15 boards at Georgian Court 2/18... started 26 of 28 games and played nearly 30 minutes a game.

**Prior to NJIT:** Won three all-Ireland titles with Scoil Ruain for coach Sean O'Regan... also played soccer, Gaelic football and Camogie soccer ... league Player of the Year in soccer as a senior ... played club basketball for the Tipperary Talons and was the Underage Club Player of the Year in 1999.

**Personal:** Áine Mary O'Dwyer ... Fourth of six children of John and Rosaleen O'Dwyer ... uncle Niall Quinn is a professional soccer player in England ... Áine played women's soccer for NJIT in 2005 (12 games, 11 starts, 1 goal, 1 assist). ... civil engineering major ... played for Ireland's national U-20 team in the summer of 2004 ... born 5/5/85 in Tipperary, Ireland.

**Coach Lusk on O'Dwyer:** "Áine runs the floor well and can play numerous positions. We will look for her to contribute more offensively this year."

### CAREER HIGHS

POINTS	19	vs. Nyack	2/25/05
	19	vs. Caldwell	1/5/04
REBOUNDS	15	at Georgian Court	2/18/04
	6	at Caldwell	1/11/05
ASSISTS		vs. Nyack	1/27/04
		vs. Stonehill	11/22/03
BLOCKS	1	11 times	
STEALS	5	at Kutztown	11/20/04
3-POINTERS	1	nine times	
MINUTES	40	at Goldey-Beacom	1/24/04

Year	GP/GS	FG-FGA	%	3FG-A	%	FT-FTA	%	Reb-Avg	Pts-Avg	A-Blk-Stl
2003-04	28/26	99-251	.394	7-34	.206	37-56	.661	213-7.6	242-8.6	52-6-30
2004-05	30/26	92-201	.458	2-7	.286	17-34	.500	158-5.3	203-6.8	68-5-47
<b>Total</b>	<b>58/52</b>	<b>198-452</b>	<b>.438</b>	<b>9-41</b>	<b>.220</b>	<b>54-90</b>	<b>.600</b>	<b>371-6.4</b>	<b>442-7.6</b>	<b>120-11-77</b>





# ERIKA VELEZ

Junior • Guard • 5-7  
Garnerville, NY/North Rockland HS



Solid all-around player who will play both guard positions this year.

**2004-05:** Played in 28 games, starting 27. ... averaged 6.2 points, 4.4 rebounds, 3.5 assists, and 2.2 steals. ... shot .475 from the field. ... scored a personal career-high 19 points at Bryant (12/29/04) and dished out 7 assists vs. Holy Family (12/4/04).

**2003-04:** Slowed by early-season stress fracture ... started 14 games and played in 23 ... averaged 5.9 points, 4.2 rebounds and a team-best 3.5 assists ... was among the CACC's top 10 in assists and assist/turnover ratio ... 10 assists vs. USP 2/10 ... game-winning steal and free-throws in closing seconds of overtime at Caldwell (1/31).

**Prior to NJIT:** Team MVP, all-county and two-time all-league for coach Richard Korn playing in a strong program at North Rockland High. ... team won a sectional championship her sophomore year ... played for the AAU Rockland Royals and coach Bob Salemo.

**Personal:** Erika Teresa Velez. ... daughter of Joe Velez and Cynthia Stila ... majoring in chemical engineering ... born 9/4/85 in Nyack, NY.

**Coach Lusk on Velez:** "We are looking to Erika to provide us with more leadership on the court. She's a great defender and we will look to her to stop the other team's best player."

## CAREER HIGHS

POINTS	19	at Bryant	12/29/04
REBOUNDS	9	vs. Teikyo Post	2/4/04
ASSISTS	10	vs. USP	2/10/04
BLOCKS	2	vs. Caldwell	1/5/04
STEALS	6	at Georgian Court	2/26/05
3-POINTERS	2	vs. Nyack	1/27/04
MINUTES	37	at Teikyo Post	2/4/04

Year	GP/GS	FG-FGA	%	3FG-A	%	FT-FTA	%	Reb-Avg	Pts-Avg	A-Blk-Stl
2003-04	23/14	52-113	.460	7-22	.318	24-43	.558	96-4.2	135-5.9	81-4-43
2004-05	28/27	67-141	.475	5-9	.263	35-63	.556	124-4.4	174-6.2	99-14-62
Total	51/41	119-254	.468	12-31	.387	59-106	.557	220-4.3	309-6.1	180-18-106





## ETI EBEWO

Junior • Forward • 5-10  
Parlin, NJ/Old Bridge HS



Hard worker who will offer the team depth at forward.

**2004-05:** Appeared in 16 games. ... posted 1.1 points and 1.0 rebounds in averaging 5.1 minutes of play.

**2003-04:** Made three starts among her 23 appearances ... 1.6 points and 1.5 rebounds in 7 minutes per contest.

**Prior to NJIT:** Played for coach Ken Fischer at Old Bridge ... also participated in track and field and volleyball ... won a county championship in the shot put ... played for coach Eric Short on the AAU Wildcats.

**Personal:** Eti Ebewo. ... daughter of Juliana Ebewo ... majoring in electrical engineering ... born 3/19/85 in Oklahoma City, OK.

**Coach Lusk on Ebewo:** "Eti is constantly improving. She has improved her offensive game tremendously and could see some time off the bench."

### CAREER HIGHS

POINTS	7	vs. Goldey-Beacom	12/2/04
REBOUNDS	4	vs. Goldey-Beacom	2/26/04
		at Georgian Court	2/18/04
ASSISTS	1	two times	
BLOCKS	1	four times	
STEALS	1	five times	
3-POINTERS	0		
MINUTES	15	at Georgian Court	2/18/04

Year	GP/GS	FG-FGA	%	3FG-A	%	FT-FTA	%	Reb-Avg	Pts-Avg	A-Blk-Stl
2003-04	23/3	10-33	.303	0-0	---	17-30	.567	35-1.5	37-1.6	1-2-3
2004-05	16/0	7-20	.353	0-0	---	3-7	.429	16-1.0	17-1.1	1-2-2
Total	39/9	17-53	.321	0-0	---	20-37	.541	51-1.3	54-1.4	2-4-5





## DENAYA HEMINGWAY

Junior • Guard/Forward • 5-9  
Jersey City, NJ/Ferris HS



Will sit out the 2005-06 season as a medical redshirt.

**2004-05:** Appeared in 15 games. ... scored 28 points in 58 minutes and made eight of 20 shots.

**2003-04:** Limited by injury to 14 games... averaged 3.9 points and 3.4 rebounds.

**Prior to NJIT:** Three-time all-county selection for coach William Millevoi at Ferris High School in Jersey City, NJ. ... three-time second-team all-state ... was second-team all-county in volleyball ... also threw the shot put for the track and field team.

**Personal:** Daughter of Monica Hemingway ... has seven younger siblings ... management major ... born 7/15/85 in Jersey City, NJ.

**Coach Lusk on Hemingway:** "We are looking forward to having her back healthy and in good shape for next season."

### CAREER HIGHS

POINTS	10	at American Int.	12/12/03
REBOUNDS	6	at Holy Family	1/17/04
ASSISTS	2	at American Int.	12/12/03
		at Nyack	11/25/03
BLOCKS	1	four times	
STEALS	3	vs. Georgian Court	12/20/03
3-POINTERS	0		
MINUTES	29	at Nyack	11/25/03

Year	GP/GS	FG-FGA	%	3FG-A	%	FT-FTA	%	Reb-Avg	Pts-Avg	A-Blk-Stl
2003-04	14/0	21-54	.389	0-4	.000	13-23	.565	47-3.4	55-3.9	4-2-7
2004-05	16/0	8-19	.421	0-0	---	4-9	.444	17-0.9	20-1.0	1-2-1
Total	30/0	29-73	.397	0-4	---	17-32	.531	64-2.1	75-2.5	5-4-8



11

## JACKIE McCaffrey

Sophomore • Guard • 5-8  
Bronx, NY/The Masters School



Will again be entrusted with starting the NJIT offense from her role as point guard and will have important defensive duties, as well. ... Coach Lusk likens her to the "Energizer bunny".

**2004-05:** Started all 30 games and ran the point. ... school-record 13 assists vs. Nyack on 2/25/05. ... led the team for the season in assists, with 110 (3.7 per game). ... averaged 32 minutes, 6.5 points and 3.9 rebounds, while shooting 70 percent from the foul line.

**Prior to NJIT:** Won four league championships with Masters under coach Peggy Green... three-time team MVP and two-year captain ... team was state independent runner-up her senior season ... also won a team league championship in cross-country ... played AAU ball for the Westchester Lady Knicks.

**Personal:** Jaclyn Brett McCaffrey. ... Daughter of Tom and Lisa McCaffrey ... majoring in biology ... born 1/8/86 in Yonkers, NY.

**Coach Lusk on McCaffrey:** "Jackie is one of our hardest workers and a great defensive player. We will look for her to help control the tempo of the game for us as well as run our offense."

### CAREER HIGHS

POINTS	16	vs. Georgian Court	2/8/05
REBOUNDS	9	vs. Dominican	3/2/05
ASSISTS	13	vs. Nyack	2/25/05*
BLOCKS	1	seven times	
STEALS	5	vs. Georgian Court	2/8/05

\*school record

Year	GP/GS	FG-FGA	%	3FG-A	%	FT-FTA	%	Reb-Avg	Pts-Avg	A-Blk-Stl
2004-05	30/30	61-167	.365	9-30	.300	33-38	.868	50-1.7	194-6.5	110-7-59



32

**KATE DAUMER**Sophomore • Forward • 6-0  
Macungie, PA/Emmaus HS

Talented small forward who could challenge for more playing time after getting her feet wet in the college game last year as a freshman.

**2004-05:** Appeared in 28 games, with one start. ... averaged 6.8 minutes per outing, scoring 41 points, while pulling down 34 rebounds.

**Prior to NJIT:** Captain and second-team all-conference for coach Bill Pugh at Emmaus High ... played for Lehigh Valley's AAU entry under coach Tom Walsh ... won school's Student of the Week award during her senior year.

**Personal:** Katherine Elizabeth Daumer. ... daughter of Dreux and Erin Daumer ... management major ... born 9/7/85 in Philadelphia.

**Coach Lusk on Daumer:** "Kate has the ability to score in the paint and shoot the outside shot. She will play a much bigger role this season and could even earn a starting position."

**CAREER HIGHS**

<b>POINTS</b>	6	vs. Felician	1/29/05
<b>REBOUNDS</b>	4	vs. Caldwell	1/15/05
<b>ASSISTS</b>	1	seven times	
<b>BLOCKS</b>	2	vs. USP	12/11/04
<b>STEALS</b>	2	two times	
<b>3-POINTERS</b>	0		
<b>MINUTES</b>	21	at Nyack	1/20/05

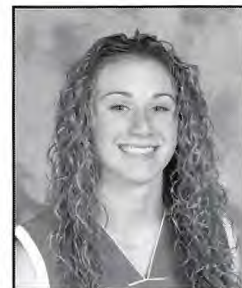
Year	GP/GS	FG-FGA	%	3FG-A	%	FT-FTA	%	Reb-Avg	Pts-Avg	A-Blk-Stl
2004-05	28/1	19-48	.396	0-0	—	3-6	.500	34-1.2	41-1.5	7-4-10





## JILL DICKINSON

Freshman • Guard • 5-9  
Milltown, NJ/Spotswood HS



Outside shooting threat, who brings a great work ethic to NJIT's team.

**Prior to NJIT:** 1,000-point scorer for coach Graham Peabody at Spotswood High. ...all-Blue Division for four years. ... Greater Middlesex Conference first team as a senior. ... Spotswood's 2005 Female Athlete of the Year. ... MVP at Spotswood 2003-04, 2004-05. ... South Amboy Christmas Tournament MVP. ... Athlete of the Week in the Star-Ledger and Home News Tribune. ... all-Blue Division in softball. ... Played AAU for Hoops America and coach Rich Leary (New Jersey Demons)

**Personal:** Jill Lauren Dickinson. ... daughter of Deborah and William Dickinson, Sr. ... majoring in management. ... sister, Beth Ann Dickinson, is a former player and coach at Fordham and is now assistant coach at Georgetown. ... born 9/11/87 in New Brunswick, NJ.

**Coach Lusk on Dickinson:** "Jill is a great athlete with a strong work ethic. She has the ability to play the 1 and 2 spot and will challenge for a starting position."



## BRITTANY MONIO

Freshman • Guard/Forward • 5-10  
Stillwater, MN/Stillwater Area HS



Likely to see her freshman action in a reserve role.

**Prior to NJIT:** Two-year varsity letter recipient at Stillwater Area High School, playing for coach Deb Van Klei. ... record-holder for season blocks. ...three-year varsity letter recipient in soccer as a goalkeeper. Stillwater Area, was second in the state of Minnesota her sophomore year.

**Personal:** Brittany R. Monio. ... daughter of Kevin and Shelli Monio. ... majoring in architecture. ... born 5/16/86 in Maplewood, MN.

**Coach Lusk on Monio:** "Brittany has the ability to play inside or out and creates a tough matchup defensively. She has a lot of raw talent and we are looking forward to watching her progress."



## ALI BAUMLIN

Freshman • Forward • 6-0  
Monroe Township, NJ/Monroe Township HS



Mobile, big who could contribute quality minutes off the bench right away.

**Prior to NJIT:** First girls 1,000-point scorer at Monroe Township High School, playing for coach Keith Hudak. ... Graduated as the school's all-time scoring leader. ... Averaged over 16 points and close to 15 rebounds per game in her career. ... all-division '02, '04, '05. ... all-area 2002-05. ... school's Female Athlete of the Year 2005. ... played her AAU ball for coach Fred Klatsky with the Central Jersey Hawks. ... three-year varsity letter recipient in track and field and all-division in the discus 2003-05. ... National Honor Society. ... graduated in the top 10 percent of her class.

**Personal:** Alison Teal Baumlín. ... daughter of Al and Robin Baumlín. ... majoring in management. ... black belt in tae kwan do. ... born 3/12/87 in Perth Amboy, NJ.

**Coach Lusk on Baumlín:** "Ali adds depth to our post players. She is a strong player who is not afraid to be physical and can finish around the basket".



NJIT's Campus Center, opened in September 2004, is the final phase of a three-year, \$83.5-million campus makeover. It is designed to be the focal point of a vibrant campus life. The center features a soaring, two-story circular dining hall, sheathed in gleaming, double-pane, energy-conserving glass.

The construction program encompasses two tall multi-story buildings – the East Building, housing the Albert Dorman Honors College, the Department of Biomedical Engineering, and administrative offices, and the center itself, featuring dining facilities, student offices and lounges, game rooms, campus store and ballroom. The two buildings are connected by a sky bridge,

and a European-style piazza featuring a 55-foot clock tower.

In an effort to improve communication and socialization on the 45-acre urban campus, the architects scaled the complex to create the feel of an outdoor room and give more spatial definition to the campus. "To promote socializing, we wanted to encourage people to move through spaces, not around them," said Thomas Levering, associate partner at the architectural firm.

The new round campus dining hall adds height and verve plus doubles the dining space. Its smoky gray glass provides a strong presence on the campus green. A 28,000 square-foot, rooftop grass terrace crowns it. Paths around it reroute traffic to the

center. The clock tower stands adjacent to one entrance to the center. The donated tower features a carillon that will chime hourly.

The construction represents a major portion of more than a \$100 million facilities improvement plan. Completed are additional residence space and an additional building for the business incubator program. Upgrades in the works include two of NJIT's oldest buildings, Cullimore and Eberhardt halls, located adjacent to the complex.

"A good-looking center tells a visual story," said Levering. "A center with the right stuff says life outside the classroom is as important as life within it."



NJIT's new campus center.



NJIT's history spans from the Industrial Revolution to the Information Age. Newark was a factory town when the tuition-free evening school was founded in 1881 to support local industries. From the early days, science and technology have been the engines fueling the university's development.

Over time, the university both anticipated and responded to change by expanding its curriculum and mission. Most notably, in 1919, the university established baccalaureate programs in three engineering fields. By 1975, NJIT offered a broad range of undergraduate and graduate degrees. All programs included significant research and public service components with the goal of providing an academic environment that fostered intellectual depth and breadth, as well as social responsibility.

Today, continuing a fourfold mission of instruction, research, economic development and public service, NJIT is among the leading comprehensive technological universities in the nation. The university offers 92 degree programs in 33 undergraduate majors, 40 masters and 19 doctoral programs. It has state-of-the-art facilities on a 45-acre campus in Newark and a solar observatory in Big Bear, California.

*Below: Aerial photo of NJIT's campus center.*



## NJIT'S SIX COLLEGES

While there has been tremendous growth and diversification at NJIT, its roots are in engineering education. For more than eight decades, Newark College of Engineering (NCE) has been preparing engineering students to use science, mathematics, technology and problem-solving skills to design, construct, test and maintain products, services, and information systems.

The New Jersey School of Architecture, established in 1973, is one of the largest architecture schools in the nation and is nationally recognized for the innovative integration of computer technology into the design curriculum.

The College of Science and Liberal Arts (CSLA), established in 1982, is moving into the forefront of many national research activities from solar astronomy to computational and mathematical modeling. CSLA provides students with the skill sets for the professional marketplace including literacy in the computer, mathematical, physical and biological sciences, as well as the traditional liberal arts disciplines.

The School of Management, established in 1988, combines the best of the traditional business disciplines (e.g., finance, marketing, accounting, e-commerce) with the power of information and technology management to develop professionals who can manage and communicate effectively.

The Albert Dorman Honors College, established in 1993, offers one of the nation's leading technologically oriented honors programs for students who are prepared to undertake a rigorous and individualized course of study.

The College of Computing Sciences, established in 2001, encompasses a department of computer science, focused on both the theoretical areas of computing and the development of new computer technology, as well as a department of information systems, concentrated on applications involving people and organizations.

*Below: NJIT's clock tower and carillon.*



## NJIT: NEW JERSEY'S TECHNOLOGICAL RESEARCH UNIVERSITY

NJIT plays a critical role in shaping New Jersey's future. As a major public technological university, NJIT is an important conduit through which technology flows into society. The university's educational programs prepare students to be leaders in the technology-dependent economy of the 21st century. University researchers seek new knowledge to improve processes and products for industry. Through public and private partnerships and economic development efforts, the university hopes to grow new business ventures that fuel the economy.



In addition to its degree programs, the university offers a full spectrum of resources in technological specialties including:

- *enrichment programs for professionals through the Division of Continuing Professional Education.*
- *programs designed to attract elementary and high school students through careers in technology.*
- *extensive eLearning courses.*
- *selected courses available at locations throughout New Jersey.*

A strong applied research program is the very core of the technological research university, generating the

advances that fuel a knowledge-based economy. NJIT's research programs have grown exponentially over the past 25 years, from a total expenditure of \$500,000 in 1978 to more than \$75 million today. The university conducts cutting-edge applied research through multidisciplinary centers of excellence, specialized high-tech labs, and partnerships with industry to develop commercially promising new technologies.

NJIT is committed to economic development for Newark, New Jersey, and the region. The university operates several outreach centers that provide direct technical assistance to the state's businesses with the goal of

helping small and medium-sized companies become more productive, profitable, and globally competitive.

NJIT is also the home of New Jersey's oldest and largest incubator facility, and was one of the first institutions in the nation to adopt economic development as a fourth mission element. The university's research centers work in collaboration with corporate partners to speed technology transfer, and numerous outreach programs help businesses become more productive. Extensive initiatives in transportation research based at the university focus on the infrastructure New Jersey needs for a thriving economy.

Laurel Hall





The NJIT men's and women's basketball teams play their home games in the main gymnasium of the Estelle and Zoom Fleisher Athletic Center.

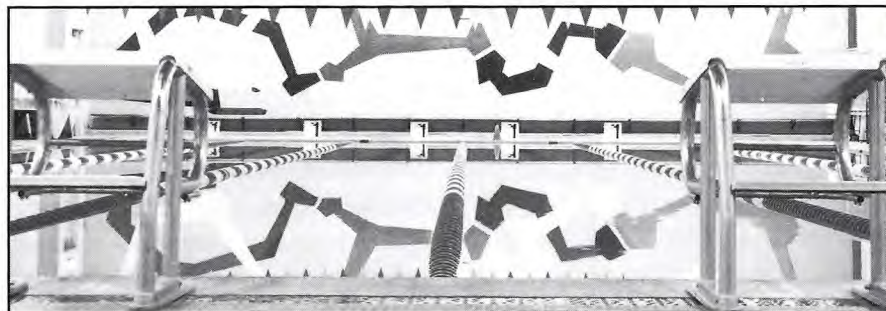
The facility, with seating for approximately 1,500 spectators, is also home to the Highlanders' men's and women's volleyball teams. The back bay, "C gym," area can be sectioned off from the main floor, making the entire gymnasium useful for intramural events, physical education classes, and campus recreation time, and able to host multiple events simultaneously.



The Fleisher Athletic Center is slated for a makeover in the summer of 2006, which will enhance the facility in its everyday use by the NJIT community, as well offering a more enjoyable experience for fans at intercollegiate contests.

Among the anticipated improvements are new spectator seating in the main gymnasium, as well improved lighting and sound. Locker and office space will be reconfigured to bring the facility in line with the needs of Division I competition, including a new court-side "press row" and a room that can serve as working space for media on game days and team meeting and study areas at other times.

The basketball teams also have access to all of the other facilities in the Fleisher Athletic Center. These include



the fitness area (containing computer-controlled biking equipment, Cybex resistance units, and an indoor track), two weight rooms (free-weight and hammer-strength), four racquetball courts (which can be converted for squash), and a martial arts/fencing center. A six-lane swimming pool is home to NJIT's men's and women's swimming teams, while the two varsity tennis squads host meets and practices at four lighted outdoor hardcourt tennis courts behind the building. The newly-renovated campus center houses six regulation bowling lanes.

The NJIT soccer teams play and practice at Lubetkin Field, a lighted, campus facility, with a newly-installed SprinTurf surface, adjacent to the Fleisher Center. A \$1.2 million renovation project in the summer of 2004 added the artificial grass, a walking track and new landscaping.

Lubetkin contains a midfield scoreboard and pressbox facilities, with

seating to hold approximately 1,000 spectators. It is also used for club sports and intramural events, as well as by the NJIT baseball team for practice.

Bears & Eagles Riverfront Stadium in downtown Newark, the facility of the Newark Bears of the independent Atlantic League of Professional Baseball Clubs, became the full-time home of Highlander baseball in 2004 and offers one of the finest college baseball playing venues in the nation.

NJIT offers several club sports, including cricket, judo, men's lacrosse and track and field, plus a full intramural program.

Each NJIT student must pass two physical education classes as a graduation requirement. Offerings include aerobics, archery, bowling, dance, fencing, golf, karate, swimming, skiing, strength training and conditioning, volleyball and water safety.



Top: Fleisher Pool. Above left: Fleisher Athletic Center gymnasium. Above: Hammer-strength weight room.



## NEWARK: THE RENAISSANCE CITY

NJIT is located in the heart of New Jersey's largest city. A major urban center, Newark is a city on the move. Some 30,000 undergraduate, graduate and professional students attend classes in University Heights at the city's four public institutions of higher learning: NJIT, Rutgers-Newark, the University of Medicine and Dentistry of New Jersey, and Essex County College.



Attractions in Newark's revitalized downtown include:

- *The Newark Museum*
- *New Jersey Performing Arts Center*
- *The Newark Public Library*
- *Symphony Hall*
- *Branch Brook Park*
- *Art galleries, restaurants, and shopping*
- *An urban architectural laboratory*
- *Professional minor league baseball (Newark Bears)*

## NEWARK: NEW JERSEY'S COLLEGE TOWN

Adjacent to NJIT is the Newark campus of Rutgers University.

NJIT and Rutgers enjoy an exceptionally close and productive consor-tial relationship within the thriving University Heights section of Newark. NJIT and Rutgers students have library privileges at both campuses. NJIT students may also enrich their educational experience by enrolling in Rutgers-Newark courses and in full degree programs in disciplines not offered at NJIT, such as art, music, geology and psychology.

Each year the two universities co-sponsor a common season of theatrical productions, as well as 'World Week,' a joint program of honors colloquia, and a variety of other cultural and social activities.



Above left: New Jersey Performing Arts Center, located minutes from campus, is quickly becoming one the the state's more popular entertainment venues.

Above: The Newark Museum, a staple in the revitalization efforts in the downtown Newark area.

## NEW JERSEY/ NEW YORK METROPOLITAN REGION

The NJIT campus is in one of the nation's most exciting cultural and business regions. Advantages include:

- *Minutes from New Jersey Performing Arts Center, Liberty Science Center, Meadowlands Sports Complex, Manhattan and all of its attractions, Newport Center Mall, and Secaucus Outlet Center.*
- *Discount tickets for Broadway shows, museums, concerts, and sporting events.*
- *Weekend trips throughout the Northeastern United States: skiing, boating, swimming, hiking, and much more.*
- *The spectacular Jersey shore is less than one hour away.*





## MetroStars Stadium

"The MetroStars plan to build a \$92.2 million stadium that would give the Major League Soccer club a home of their own.... the team, expects the new 20,000-seat venue to open in June 2007. "

## Newark/New Jersey Devils Arena

"Officials from both the city of Newark and the New Jersey Devils....unveiled the design for the long-awaited Newark/New Jersey Devils Arena. The facility is being planned as the centerpiece of the city's Downtown Core Redevelopment Project."

The proposed 17,000-plus seat, 700,000 square-foot arena is scheduled to be ready for the 2007 season.



*The Estelle and Zoom Fleisher Athletic Center, home of NJIT basketball.*





## POINTS

1,322	Nevea Van Wright	1991-94, 95-96
1,165	Lindsey Reggo	2000-04
1,132	Jackie O'Connor	1997-2001
1,006	Wendy Gruenewald	1992-96
983	Nicole Ballou	1999-2003
978	SchrKya Massey	2001-2003
922	Sharon Kukal	1997-99
846	Kelly Crowe	2003-pres.
826	Liliana Alvarez	1990-94
776	Selena Kershaw	2001-pres.

Note: Massey scored 71 points in two seasons at Loyola (Md.) College for a career total of 1,049. Mullen scored 641 points in two seasons at Adelphi University for a career total of 1,262.

## SCORING AVERAGE

(min. 30 games)

18.5	SchrKya Massey (978/53)	2001-03
18.1	Sharon Kukal (922/51)	1997-99
16.3	N. Van Wright (1322/81)	1991-94, 95-96
14.9	Kristie Simpson (553/37)	1995-97
14.6	Kelly Crowe (846/58)	2003-pres.
12.7	Tamika Fogg (407/32)	1995-97

## REBOUNDS

1,060	Wendy Gruenewald	1992-96
696	Liliana Alvarez	1990-94
573	Kate Duncan	2000-04
572	Dion McMillian	1986-88
542	Sharon Kukal	1997-99
508	Lauren Daley	1998-2000
497	Selena Kershaw	2001-pres.
423	Chevanese Samms	2000-03
	Nevea Van Wright	1991-94, 95-96
419	Lindsey Reggo	2000-04

## REBOUND AVERAGE

(min. 30 games)

15.9	Dion McMillian (572/36)	1986-88
12.5	Wendy Gruenewald (1060/85)	1992-96
10.6	Sharon Kukal (542/51)	1997-99
9.5	Kristie Simpson (350/37)	1995-97
9.4	Lauren Daley (508/54)	1998-2000

## ASSISTS

396	Nicole Ballou	1999-2003
256	Nevea Van Wright	1991-94, 95-96
243	Jackie O'Connor	1997-2001
213	SchrKya Massey	2001-2003
183	Kelly Crowe	2003-pres.
180	Erika Velez	2003-pres.
167	Lindsey Reggo	2000-04
118	Wendy Gruenewald	1992-96
114	Veronica Mullen	1998-2000
111	Nancy Belbo	1993-94

## BLOCKS

102	Liliana Alvarez	1990-94
89	Wendy Gruenewald	1992-96
80	Lauren Daley	1998-2000
78	Selena Kershaw	2001-pres.
55	Chevanese Samms	2000-03
24	Tamika Fogg	1995-97
23	Kate Duncan	2000-04

	SchrKya Massey	2001-03
21	Nevea Van Wright	1991-94, 95-96
20	Nancy Belbo	1993-94

## STEALS

193	Nicole Ballou	1999-2003
171	Nevea Van Wright	1991-94, 95-96
168	Jackie O'Connor	1997-2001
167	Kelly Crowe	2003-pres.
160	SchrKya Massey	2001-03
133	Wendy Gruenewald	1992-96
119	Tamika Fogg	1995-97
112	Lindsey Reggo	2000-04
107	Tamara McNair	1995-98
106	Erika Velez	2003-pres.

## THREE-POINT FIELD GOALS

222	Jackie O'Connor	1997-2001
164	Lindsey Reggo	2000-04
139	Nevea Van Wright	1991-94, 95-96
123	Nicole Ballou	1999-2003
76	Kelly Crowe	2003-pres.
72	Jackie Lupo	2002-2005
40	Tamara McNair	1995-98
38	Veronica Mullen	1998-2000
37	Natalie Rodriguez	1995-98
32	Melsha Winchester	1997-2001

## GAMES

109	Kate Duncan	2000-04
	Lindsey Reggo	2000-04
	Nicole Ballou	1999-2003
106	Jackie O'Connor	1997-2001
103	Odelia Pyron	1997-2001
92	Melsha Winchester	1997-2001
85	Wendy Gruenewald	1992-96
81	Nevea Van Wright	1991-94, 95-96
78	Chevanese Samms	2000-03
76	Tennille Jordan	1998-2002

## FIELD GOALS

458	Nevea Van Wright	1991-94, 95-96
427	Wendy Gruenewald	1992-96
416	Lindsey Reggo	2000-04



Current assistant coach Nicole Ballou '03 tops all Highlanders in assists, steals and games.

368	Jackie O'Connor	1997-2001
354	SchrKya Massey	2001-03

## FIELD-GOAL ATTEMPTS

1,269	Nevea Van Wright	1991-94, 95-96
1,265	Lindsey Reggo	2000-04
1,121	Jackie O'Connor	1997-2001
1,116	Wendy Gruenewald	1992-96
1,064	Nicole Ballou	1999-2003

## FIELD-GOAL PERCENTAGE

(min. 30 games)

.490	Kristie Simpson (217-443)	1995-97
.455	Selena Kershaw (188-406)	2001-pres.
.449	Sharon Kukal (335-746)	1997-99
.395	Lauren Daley (178-451)	1998-2000
.383	W. Gruenewald (427-1116)	1992-96
.372	Veronica Mullen (242-650)	1998-2000

## THREE-POINT FIELD GOAL ATTEMPTS

720	Jackie O'Connor	1997-2001
539	Lindsey Reggo	2000-04
430	Nicole Ballou	1999-03
411	Nevea Van Wright	1991-94, 95-96
151	Tamara McNair	1995-98

## THREE-POINT FIELD GOAL PERCENTAGE (min. 30 made)

.365	Kelly Crowe (230-353)	2003-pres.
.361	N. Van Wright (139-411)	1991-94, 95-96
.348	Jackie Lupo (72-207)	2002-05
.349	Veronica Mullen (38-109)	1998-99
.308	Jackie O'Connor (222-720)	1997-2001
.304	Lindsey Reggo (164-539)	2000-pres.
.286	Nicole Ballou (123-430)	1999-03

## FREE THROWS MADE

269	SchrKya Massey	2001-03
267	Nevea Van Wright	1991-94, 95-96
252	Sharon Kukal	1997-99
230	Kelly Crowe	2003-pres.
204	Nicole Ballou	1999-2003
174	Jackie O'Connor	1997-2001

## FREE-THROW ATTEMPTS

406	Nevea Van Wright	1991-94, 95-96
365	Sharon Kukal	1997-99
364	SchrKya Massey	2001-03
353	Kelly Crowe	2003-pres.
293	Nicole Ballou	1999-2003
269	Lindsey Reggo	2000-04

## FREE-THROW PERCENTAGE

(min. 100 made)

.739	SchrKya Massey (269-364)	2001-03
.702	Jackie O'Connor (174-248)	1997-2001
.696	Nicole Ballou (204-293)	1999-pres.
.690	Sharon Kukal (252-365)	1997-99
.658	N. Van Wright (267-406)	1991-94, 95-96
.652	Kelly Crowe (230-353)	2003-pres.



## POINTS

539	SchrKya Massey	2001-02
509	Sharon Kukal	1997-98
482	Kelly Crowe	2004-05
439	SchrKya Massey	2002-03
413	Sharon Kukal	1998-99
409	Nevea Van Wright	1993-94
379	Nevea Van Wright	1992-93
375	Lindsey Reggo	2002-03
374	Kristie Simpson	1994-95
366	Veronica Mullen	1999-2000

## SCORING AVERAGE

(min. 14 games)

21.2	Sharon Kukal	1997-98
20.7	SchrKya Massey	2001-02
19.5	Nevea Van Wright	1994-95
17.2	Nevea Van Wright	1993-94
16.3	Kristie Simpson	1994-95

## REBOUNDS

316	Dion McMillian	1986-87
314	Wendy Gruenewald	1992-93
309	Sharon Kukal	1998-99
284	Lauren Daley	1999-2000
270	Wendy Gruenewald	1994-95
256	Dion McMillian	1987-88
246	Wendy Gruenewald	1993-94
241	Kristine Simpson	1994-95
236	Merna Maloon	1997-98
230	Wendy Gruenewald	1995-96



Jackie O'Connor '01 holds the single-season and career records for three-point field goals.

## REBOUND AVERAGE

(min. 14 games)

16.6	Dion McMillian	1986-87
15.1	Dion McMillian	1987-88
14.3	Wendy Gruenewald	1992-93
12.9	Wendy Gruenewald	1993-94
11.7	Wendy Gruenewald	1994-95

## ASSISTS

120	Nicole Ballou	2002-03
113	SchrKya Massey	2001-02
111	Nancy Belbo	1993-94
110	Jackie McCaffrey	2004-05
102	Nicole Ballou	2001-02
101	Nicole Ballou	2000-01
100	SchrKya Massey	2002-03
99	Erika Velez	2004-05
99	Keri Ann Gavin	1998-99
97	Kelly Crowe	2004-05

## BLOCKS

66	Liliana Alvarez	1992-93
49	Lauren Daley	1999-2000
36	Liliana Alvarez	1993-94
34	Selena Kershaw	2001-02
31	Lauren Daley	1998-99
30	Cheyane Samms	2000-01
25	Wendy Gruenewald	1995-96
23	Selena Kershaw	2004-05
20	Nancy Belbo	1993-94
	Wendy Gruenewald	1992-93

## STEALS

94	Kelly Crowe	2003-04
88	SchrKya Massey	2001-02
76	Nevea Van Wright	1993-94
72	SchrKya Massey	2002-03
71	Brenda Rodriguez	1994-95
70	Kelly Crowe	2004-05
65	Tamara McNair	1996-97
	Tamika Fogg	1995-96
	Lauren Battista	1994-95
	Nancy Belbo	1993-94
	Liliana Alvarez	1992-93

## THREE-POINT FIELD GOALS

68	Jackie O'Connor	2000-01
58	Lindsey Reggo	2002-03
	Jackie O'Connor	1999-2000
57	Nevea Van Wright	1993-94
56	Jackie O'Connor	1998-99
47	Nicole Ballou	2001-02
45	Kelly Crowe	2004-05
43	Lindsey Reggo	2003-04
40	Jackie O'Connor	1997-98
39	Jackie Lupo	2003-04

## GAMES

30	Kelly Crowe	2004-05
	Selena Kershaw	2004-05
	Aine O'Dwyer	2004-05
	Jackie McCaffrey	2004-05
	Lisa Neira	2004-05
	Jackie Lupo	2004-05

## FIELD GOALS

200	SchrKya Massey	2001-02
184	Sharon Kukal	1997-98
154	SchrKya Massey	2002-03

## FIELD-GOAL ATTEMPTS

506	SchrKya Massey	2001-02
446	SchrKya Massey	2002-03
414	Sharon Kukal	1997-98

## FIELD-GOAL PERCENTAGE

(min. 30 games)

.500	Emese Gyuricza	2004-05
.480	Selena Kershaw	2001-02
.476	Kristie Simpson	1994-95

## THREE-POINT FIELD GOAL ATTEMPTS

230	Jackie O'Connor	2000-01
175	Lindsey Reggo	2002-03
173	Jackie O'Connor	1999-2000

## THREE-POINT FIELD GOAL PERCENTAGE (min. 20 made)

.535	Veronica Mullen	1999-2000
.393	Nevea Van Wright	1993-94
.371	Nicole Ballou	1999-2000

## FREE THROWS MADE

141	Kelly Crowe	2004-05
141	Sharon Kukal	1997-98
138	SchrKya Massey	2001-02

## FREE-THROW ATTEMPTS

204	Sharon Kukal	1997-98
195	Kelly Crowe	2004-05
189	SchrKya Massey	2001-02

## FREE-THROW PERCENTAGE

(min. 35 made)

.749	SchrKya Massey	2002-03
.737	Nevea Van Wright	1995-96
.730	SchrKya Massey	2001-02
.729	Jackie O'Connor	2000-01
.728	Kate Duncan	2001-02



## INDIVIDUAL SINGLE-GAME RECORDS

### POINTS

35	Sharon Kukal vs. Queens	1/28/98
34	SchrKya Massey vs. Nyack	1/23/02
34	Nevea Van Wright vs. Mt. St. Vincent	12/10/93

### REBOUNDS

25	Dion McMillian vs. Bloomfield	1/30/87
25	Wendy Gruenewald vs. St. Elizabeth	12/3/92
23	Dion McMillian vs. Drew	11/22/86

### ASSISTS

13	Jackie McCaffrey vs. Nyack	2/25/05
12	Nicole Ballou vs. Felician	1/15/02
11	Tamara McNair vs. St. Elizabeth	2/5/97

### BLOCKS

7	Liliana Alvarez vs. Mount St. Mary	1/23/93
---	------------------------------------	---------

### STEALS

10	Kelly Crowe vs. Post	12/7/04
10	Tamika Fogg vs. Yeshiva	2/24/96
10	Kristie Simpson vs. St. Joseph's	2/19/96
10	Nevea Van Wright vs. Medgar Evers	2/16/94

### FIELD GOALS

13	Nevea Van Wright vs. Mt. St. Vincent	12/10/93
----	--------------------------------------	----------

### FIELD-GOAL ATTEMPTS

29	SchrKya Massey vs. Holy Family	2/2/02
29	Nevea Van Wright vs. St. Elizabeth	1/29/94

### THREE-POINTERS

7	Nevea Van Wright vs. New York Maritime	2/19/94
---	--	---------

### THREE-POINT ATTEMPTS

19	Jackie O'Connor vs. Goldey-Beacom	2/3/01
----	-----------------------------------	--------

### MOST 3FGS WITHOUT MISSING

5-5	Nevea Van Wright vs. Mount St. Mary	12/4/93
-----	-------------------------------------	---------

### FREE-THROWS MADE

16	Tamika Fogg vs. John Jay	12/7/96
----	--------------------------	---------

### FREE-THROW ATTEMPTS

27	Tamika Fogg vs. John Jay	12/7/96
----	--------------------------	---------

### MOST FTS WITHOUT MISSING

12-12	Odelia Pyron vs. Queens (NY)	12/11/99
-------	------------------------------	----------

### MINUTES

48	Kelly Crowe at Teikyo Post	2/4/04
----	----------------------------	--------

### TRIPLE DOUBLES

Lauren Battista vs. Old Westbury (10 points, 11 rebounds, 11 assists)	1/28/95
Kristie Simpson vs. St. Joseph's (22 points, 11 rebounds, 10 steals)	2/19/96

## TEAM SINGLE-GAME RECORDS

<b>Most Points</b>	98 vs. Goldey Beacom	12/2/04
<b>Most Points, Regulation</b>	98 vs. Goldey Beacom	12/2/04
<b>Least Points</b>	17 vs. Drew (55)	1990-91
<b>Most Points Allowed</b>	122 vs. Saint Rose	11/15/97
<b>Least Points Allowed</b>	12 vs. Yeshiva	2/24/96
	vs. NY Maritime	2/19/94
<b>Highest Victory Margin</b>	80 vs. Yeshiva (92-12)	2/24/96
<b>Highest Losing Margin</b>	95 vs. Saint Rose (27-122)	11/15/97
<b>Most Field Goals</b>	41 vs. Baruch	2/12/96
<b>Most Field-Goal Attempts</b>	92 vs. York (NY)	1/10/96
<b>Most Three-Pointers</b>	11 vs. Felician	1/15/02
	vs. Goldey-Beacom	2/3/01
<b>Most Three-Point Attempts</b>	45 vs. Goldey-Beacom	2/3/01
<b>Best Perfect Game (3FG)</b>	6-6 vs. Mount St. Mary	12/4/93
<b>Most Free-Throws Made</b>	32 vs. Mercy	11/18/01
<b>Most Free-Throw Attempts</b>	50 at Teikyo Post (20T)	2/4/04
<b>Best Perfect Game (FT)</b>	12-12 vs. Philadelphia Sciences	12/22/01
<b>Most Rebounds</b>	71 vs. John Jay	12/7/96
<b>Most Assists</b>	29 vs. NYIT	1/22/00
<b>Most Steals</b>	37 vs. Bard	2/18/96
<b>Most Blocked Shots</b>	14 vs. Baruch	2/12/96
<b>Most Turnovers</b>	39 vs. Manhattanville	11/23/96
	vs. Montclair State	12/6/96
<b>Most Turnovers Forced</b>	48 s. Bard	2/19/96
<b>Most Fouls</b>	31 at Nyack	11/25/03

## TEAM SINGLE-SEASON RECORDS

<b>Most Games</b>	30	2004-05
<b>Most Wins</b>	18	2004-05
<b>Best Winning Percentage</b>	.762	1994-95 (16-5)
<b>Most Losses</b>	23	2000-01
<b>Most Consecutive Wins</b>	7	1995-96
<b>Most Consecutive Losses, Season</b>	16	2000-01
<b>Most Points</b>	2,013	2002-03
<b>Highest Scoring Average</b>	67.9	2001-02
<b>Least Points</b>	555	1986-87
<b>Most Points Allowed</b>	1,924	2000-01
<b>Least Points Allowed</b>	1,054	1987-88
<b>Lowest Scoring Defense</b>	52.3	1992-93
<b>Highest Scoring Margin</b>	+4.4	1994-95
<b>Most Rebounds</b>	1,251	2002-03
<b>Highest Rebound Average</b>	52.2	1992-93
<b>Highest Rebounding Margin</b>	+9.3	1994-95
<b>Most Field Goals</b>	744	2004-05
<b>Most Field-Goal Attempts</b>	1,855	2002-03
<b>Highest Field-Goal Percentage</b>	.408	2004-05
<b>Most Three-Pointers</b>	144	2003-04
<b>Most Three-Point Attempts</b>	562	2000-01
<b>Highest Three-Point Percentage</b>	.370	1993-94
<b>Most Free-Throws Made</b>	419	2004-05
<b>Most Free-Throw Attempts</b>	625	2004-05
<b>Highest Free-Throw Percentage</b>	.670	2004-05
<b>Most Assists</b>	503	2004-05
<b>Most Steals</b>	337	2004-05
<b>Most Blocked Shots</b>	105	1992-93
<b>Most Turnovers</b>	647	1998-99
<b>Most Turnovers Forced</b>	637	2004-05
<b>Most Fouls</b>	593	2002-03



## CONFERENCE CHAMPIONSHIPS

Independent Athletic Conference

1996 (Tournament)

### ALL-CONFERENCE

Women's Intercollegiate Athletic Conference

1987-88	Dion McMillian
	Sandy Worley (2nd)
1989-90	Tywana Garner (2nd)
1990-91	Liliana Alvarez
1991-92	Nevea Van Wright (HM)
1992-93	Nevea Van Wright
1993-94	Kristie Simpson
	Lauren Battista (2nd)
	Wendy Gruenewald (2nd)
1995-96	Nevea Van Wright
	Wendy Gruenewald
	Kristie Simpson (2nd)
1996-97	Tamika Fogg
	Tamara McNair (2nd)

New York Collegiate Athletic Conference

1997-98	Sharon Kukal (2nd)
1998-99	Sharon Kukal

Central Atlantic Collegiate Conference

2001-02	SchrKya Massey
2002-03	SchrKya Massey
2004-05	Kelly Crowe (2nd and All-Tournament)
	Selena Kershaw (3rd)

### CONFERENCE ACADEMIC PLAYER OF THE YEAR

New York Collegiate Athletic Conference

1999-2000	Lauren Daley
-----------	--------------

### ALL-JERSEY 9 ASSOCIATION

1992-93	Nevea Van Wright
1993-94	Wendy Gruenewald

### NJCBCA PLAYER OF THE YEAR

1998-99	Sharon Kukal
---------	--------------

### ALL-NJCBCA

1995-96	Wendy Gruenewald
1997-98	Sharon Kukal
1998-99	Sharon Kukal

### ALL-MET WRITERS

1998-99	Sharon Kukal
2002-03	SchrKya Massey (2nd)
2003-04	Kelly Crowe (2nd)
2005-05	Kelly Crowe (2nd)

## ALL-TIME TEAM MVPS

1986-87	.....
1987-88	.....Dion McMillian
1988-89	.....no team
1989-90	.....Tywana Garner
1990-91	.....Liliana Alvarez
1991-92	.....Nevea Van Wright
1992-93	.....Nevea Van Wright
1993-94	.....Nevea Van Wright
1994-95	.....Wendy Gruenewald
1995-96	.....Nevea Van Wright
1996-97	.....Tamika Fogg
1997-98	.....Sharon Kukal
1998-99	.....Sharon Kukal
1999-2000	.....Lauren Daley
2000-01	.....Jackie O'Connor
2001-02	.....SchrKya Massey
2002-03	.....Nicole Ballou, SchrKya Massey
2003-04	.....Kelly Crowe
2004-05	.....Kelly Crowe

## ALL-TIME CAPTAINS

1986-87	.....Tracey Malinowski, Dion McMillian
1987-88	.....Dion McMillian
1988-89	.....no team
1989-90	.....
1990-91	.....
1991-92	.....
1992-93	.....
1993-94	.....
1994-95	.....Lauren Battista, Wendy Gruenewald
1995-96	.....
1996-97	.....
1997-98	.....
1998-99	.....Sharon Kukal
1999-2000	.....Lauren Daley, Jackie O'Connor
2000-01	.....Jackie O'Connor, Odelia Pyron
2001-02	.....Nicole Ballou, Chevanese Samms
2002-03	.....Nicole Ballou, SchrKya Massey
2003-04	.....Kate Duncan, Lindsey Reggo
2004-05	.....Selena Kershaw, Kelly Crowe



## 1986-87 (0-15)

11/22	at Drew	L	32-65
11/23	vs. Johns Hopkins	L	37-80
12/2	ST. ELIZABETH	L	40-73
12/4	at Upsala	L	47-57
12/10	at FDU-Madison	L	21-86
12/12	at St. Thomas Aquinas	L	24-76
12/13	vs. Old Westbury	L	36-71
12/18	OLD WESTBURY	L	51-64
1/7	at William Paterson	L	24-73
1/30	at Bloomfield	L	48-66
1/27	at Old Westbury	L	23-75
	at Georgian Court	L	18-81
2/3	RUTGERS-NEWARK	L	36-103
2/9	DOMINICAN (NY)	L	47-76
2/11	at St. Elizabeth	L	45-71

\* WIAC (0-3)

Coach: John Speiss

## 1987-88 (2-11)

	Greensboro	L	33-62
	St. Elizabeth	L	32-53
	Bloomfield	L	29-85
	FDU-Madison	L	31-70
	Vassar	L	52-54
	Upsala	L	56-79
	Nazareth	L	43-103
	Notre Dame College	L	36-52
1/30	at Caldwell	L	70-81
	Drew	L	34-53
2/10	N.Y. MARITIME	W	47-31
	Bloomfield	L	37-85
	VASSAR	W	62-59

\* WIAC (I)

Coach: Dave DeNure

## 1988-89

No Team

## 1989-90 (0-12)

1/8	at FDU-Madison		
1/13	FDU-MADISON		
1/20	at Mt. St. Vincent		
1/23	at MT. ST. MARY'S		
1/27	ST. ELIZABETH		
1/29	at Bloomfield		
2/5	at Caldwell		
2/7	at Drew		
2/8	BLOOMFIELD		
2/16	at Mt. St. Mary's		
2/17	at Upsala		
2/20	at St. Elizabeth		

\* WIAC (I)

Coach: Bill Avant

## 1990-91 (3-17)

	Yeshiva	W	40-23
	Mt. St. Vincent	L	24-68
	St. Elizabeth	L	25-68
	Drew	L	17-55
	Caldwell	L	20-77
	Centenary	L	33-66
	FDU-Madison	L	30-64
	Mt. St. Mary	L	22-65
	Upsala	L	24-70
	Hunter	L	27-77
	Caldwell	L	21-74
	N.Y. Maritime	W	39-24
	St. Elizabeth	L	20-67
	Bloomfield	L	31-104
	Mt. St. Mary	L	28-76
	N.Y. Maritime	L	61-69
	FDU-Madison	L	38-71
	Upsala	L	43-90
	Yeshiva	W	54-32
	Centenary	L	40-60

Coach: Brenda Zabriskie

## 1991-92 (8-14)

11/22	vs. Medgar-Evers	W	39-37
11/23	vs. Mt. St. Vincent	L	39-64
11/26	MT. ST. VINCENT	L	27-38
12/5	ST. ELIZABETH*	L	52-86
12/9	at FDU-Madison*	L	35-83
12/11	YESHIVA	W	63-24
12/12	HUNTER	L	53-76
1/13	MT. ST. MARY'S*	L	54-79
1/22	N.Y. MARITIME	W	80-18
1/24	at St. Elizabeth*	L	59-71
1/30	NEW ROCHELLE	W	71-40
1/31	YORK (NY)	W	62-51
2/3	UPSALA*	L	62-95
2/4	FDU-MADISON*	L	38-72
2/10	at York (NY)	W	67-58
2/13	at Upsala*	L	54-84
2/15	CENTENARY	L	64-66

2/17	at Yeshiva	W	69-35
2/19	Centenary*	L	55-81
2/22	at Drew	L	50-66
	at New York Maritime	W	53-25
2/26	at Mt. St. Mary's*	L	35-64

\* WIAC (I)

Coach: Brenda Zabriskie

## 1992-93 (8-14)

11/21	YORK	W	52-50
11/24	at Upsala*	L	49-81
11/30	OLD WESTBURY	L	56-65
12/3	ST. ELIZABETH*	L	43-53
12/5	DREW	L	59-67
12/7	FDU-MADISON*	L	46-71
12/8	at New Rochelle	W	79-37
1/11	CCNY	W	62-43
1/13	at York	L	37-39
1/16	MT. ST. VINCENT**	W	71-45
1/18	at Centenary*	L	52-74
1/22	at St. Elizabeth* [ot]	L	57-64
1/23	at Mt. St. Mary*	L	41-67
1/26	at Stevens Tech**	W	57-28
1/30	at N.Y. Maritime**	W	64-16
2/1	UPSALA*	L	57-62
2/2	at FDU-Madison*	L	45-77
2/9	STEVENS TECH**	W	71-25
2/6	at Mt. St. Vincent**	L	37-39
2/15	at Yeshiva**	W	62-17
2/17	CENTENARY*	L	38-65
2/23	MT. ST. MARY*	L	47-63

\* WIAC (0-10)

\*\* IAC (5-1)

Coach: Brenda Zabriskie

## 1993-94 (13-8)

11/23	UPSALA*	L	51-93
11/29	DREW	W	63-62
12/1	at St. Elizabeth*	L	53-59
12/4	at Mt. St. Mary*	L	58-76
12/6	at FDU-Madison*	L	48-60
12/10	vs. Medgar-Evers	W	68-48
12/11	vs. Baruch	W	62-54
1/10	at CCNY	W	53-52
1/15	MT. ST. VINCENT	W	58-56
1/22	at Staten Island	W	67-55
1/25	BARUCH	W	57-53
1/27	FDU-MADISON*	L	57-68
1/29	ST. ELIZABETH*	W	65-56
2/7	CENTENARY*	W	84-59
2/14	at Upsala*	L	53-71
2/16	at Medgar-Evers	L	73-86
2/19	N.Y. MARITIME	W	40-12
2/22	at Manhattanville	L	45-48
2/25	N.Y. MARITIME+	W	67-12
2/26	MT. ST. VINCENT+	W	60-49
2/28	at Centenary*	W	61-36

\* WIAC (3-6)

+ IAC Tournament

Coach: Brenda Zabriskie-DeNure

## 1994-95 (12-11)

11/22	at Drew	W	59-58
11/30	ST. ELIZABETH*	L	48-53
12/7	STATEN ISLAND	L	68-72
1/5	at Warner Southern	L	48-65
1/6	vs. Bethel	L	55-77
1/7	vs. Houten	L	39-58
1/9	CCNY	W	68-66
1/11	at York	L	33-34
1/14	at Mt. St. Vincent*	L	52-53
1/16	at Centenary*	W	69-57
1/18	at St. Elizabeth* [ot]	L	69-73
1/21	BARUCH	W	54-45
1/24	ST. JOSEPH'S (NY)	W	74-29
1/26	FDU-MADISON*	L	40-69
1/28	OLD WESTBURY	W	68-37
2/2	at Richard Stockton	L	46-65
2/6	CENTENARY*	W	62-59
2/8	MT. ST. MARY*	L	57-75
2/10	at Lehman	W	89-42
2/15	MEDGAR-EVERS	W	76-63
2/20	MANHATTANVILLE	W	70-50
2/23	vs. Yeshiva +	W	77-26
2/26	vs. Mt. St. Vincent+	W	53-46

\* WIAC (2-5)

+ IAC Tournament

Coach: Brenda Zabriskie-DeNure

## 1995-96 (16-5)

11/21	DREW	L	62-71
11/29	at St. Elizabeth	W	63-36
12/2	vs. CCNY	W	57-55
12/3	at Manhattanville	L	55-61
12/5	MT. ST. VINCENT	W	82-48
12/7	at Staten Island	W	52-45

1/6	STOCKTON	L	50-57
1/10	at York	W	80-37
1/13	at Mt. St. Vincent	W	70-52
1/15	at Centenary	W	73-66
1/25	at FDU-Madison	L	43-49
1/30	ST. ELIZABETH	W	59-42
2/5	CENTENARY	W	76-72
2/7	at Mt. St. Mary	L	41-59
2/9	HUNTER	W	62-42
2/12	at Baruch	W	91-37
2/14	N.Y. MARITIME	W	88-15
2/18	at Bard	W	74-35
2/19	ST. JOSEPH'S (NY)	W	73-24
2/24	YESHIVA	W	92-12
2/25	MT. ST. VINCENT	W	60-43

\* WIAC (4-1)

Coach: Maureen O'Neil

## 1996-97 (7-15)

11/22	at Rutgers-Newark	L	33-74
11/23	vs. Manhattanville	L	36-68
12/2	GEORGIAN COURT	L	21-74
12/4	at Mt. St. Vincent	W	60-50
12/5	at Montclair State	L	38-85
12/7	vs. John Jay	W	53-49
12/11	ST. JOSEPH'S (NY)*	W	75-53
1/7	at Richard Stockton	L	42-84
1/13	at Centenary*	L	56-75
1/15	at York	W	58-34
1/21	QUEENS (NY)	L	46-70
1/23	MT. ST. VINCENT	L	43-65
1/27	ST. JOSEPH'S(Bkln)*	W	73-55
1/30	FDU-MADISON	L	47-64
2/1	at Caldwell	L	
2/3	at CENTENARY*	L	51-82
2/5	ST. ELIZABETH	W	52-42
2/7	STATEN ISLAND	L	51-62
2/13	BARD	W	58-46
2/17	ST. JOSEPH'S (NY)*	L	52-53
2/20	at St. Elizabeth*	L	39-65
2/22	at Mt. St. Mary	L	44-81

\* WIAC (3-4)

Coach: Bill McCall

## 1997-1998 (5-21)

11/15	at St. Rose*	L	27-122
11/17	CALDWELL	L	60-77
11/23	at Bridgeport	L	44-81
11/28	vs. Bloomfield	W	59-53
11/29	at Molloy*	L	54-63
12/3	DOWLING*	L	65-76
12/6	at Mercy*	L	67-76
12/8	at Concordia (NY)*	L	65-77
12/10	at Adelphi*	L	52-76
12/13	SOUTHAMPTON*	L	56-87
1/5	at Dist. Of Columbia	L	50-59
1/7	C.W. POST*	L	47-70
1/10	at Dowling*	L	57-88
1/14	QUEENS (NY)*	W	50-48
1/17	PHILA. TEXTILE*	L	64-93
1/19	at C.W. Post*	L	45-63
1/21	at Molloy*	L	38-61
1/24	MERCY*	L	59-67
1/28	at Queens (NY)*	W	66-57
1/31	MOLLOY	L	53-66
2/4	at Phila. Textile*	L	54-83
2/7	CONCORDIA (NY)*	W	70-65
2/11	at Southampton*	L	52-79
2/14	DIST. OF COLUMBIA	W	62-51
2/18	ADELPHI*	L	48-59
2/21	ST. ROSE*	L	30-63

\* NYCAC (3-17)

Coach: Kim Barnes Arico

## 1998-99 (11-16)

11/27	at District of Columbia	L	75-87
11/28	vs. Elizabeth City	L	55-80
12/2	ADELPHI*	L	65-69
12/5	MOLLOY*	W	62-56
12/9	at Philadelphia Textile*	L	49-86
12/12	ST. ROSE*	L	64-98
1/2	DOWLING*	L	62-75
1/4	CONCORDIA (NY)*	L	56-66
1/6	at Southampton*	L	48-72
1/9	at New York Tech*	W	55-42
1/13	QUEENS (NY)*	W	68-44
1/16	at Mercy*	W	54-47
1/18	C.W. POST* (3ot)	W	62-59
1/20	at Adelphi* [ot]	L	56-58
1/23	at St. Augustine	L	43-74
1/25	at Molloy*	W	65-57
1/27	PHILA. TEXTILE*	L	45-71
1/30	at St. Rose*	L	40-81
2/1	DOWLING*	W	65-61
2/3	at Concordia (NY)*	W	61-50
2/6	SOUTHAMPTON*	L	52-63

2/7	DIST. OF COLUMBIA	L	55-57
2/10	NEW YORK TECH*	W	75-32
2/13	at Queens (NY)*	W	53-49
2/17	MERCY*	W	54-41
2/20	at C.W. Post*	L	51-59
2/23	at Southampton+	L	51-74

\* NYCAC (9-12)

+ NYCAC Tournament

Coach: Kim Barnes Arico

## 1999-2000 (11-16)

11/20	at Coll of New Jersey	L	53-77
11/21	vs. Lehman	W	74-56
11/23	ST. PAUL'S (ot)	L	62-66
12/1	ADELPHI*	L	58-75
12/4	at New York Tech*	W	74-61
12/8	PHILADELPHIA*	L	69-78
12/11	at Queens (NY)*	W	72-59
12/19	ST. ROSE*	L	51-87
1/5	MOLLOY*	L	61-68
1/8	at Mercy*	L	46-77
1/12	DOWLING*	W	57-49
1/15	at C.W. Post*	L	64-75
1/17	CONCORDIA (NY)*	W	85-59
1/19	at Adelphi*	L	56-78
1/22	NEW YORK TECH*	W	77-51
1/26	at Philadelphia*	L	52-81
1/29	QUEENS (NY)*	W	64-54
2/2	SOUTHAMPTON*	L	58-80
2/5	at Molloy*	W	72-70
2/9	MERCY*	L	52-64
2/12	at Dowling*	W	72-52
2/16	C.W. POST*	W	64-51
2/18	ST. AUGUSTINE	L	56-58
2/20	at Concordia (NY)*	W	72-65
2/23	at Southampton*	L	53-79
2/26	at St. Rose*	L	42-94
2/29	at Philadelphia*	L	65-80



2/12 at USP\* L 60-79  
2/14 BLOOMFIELD\* L 62-67  
2/16 WILMINGTON (DE)\* W 83-54  
2/18 at Kutztown L 59-69  
2/23 NEW HAVEN L 53-72

\* CACC (14-8, 4th/12)

Coach: Sharon Manning Beverly

## 2002-03 (16-12)

11/22 vs. Stonehill L 64-80  
11/23 vs. La Roche W 85-52  
11/26 NYACK\* W 63-56  
12/1 KUTZTOWN L 67-70  
12/4 at Wilmington (DE)\* W 64-39  
12/7 at Dominican (NY)\* W 77-69  
12/10 at Goldey-Beacom\* W 67-35  
12/14 at Felician\* W 76-67  
12/21 at Georgian Court\* L 51-67  
12/30 at Eckerd L 56-66  
1/2 at St. Leo L 40-96  
1/5 USP\* W 81-51  
1/7 at Caldwell\* L 57-68  
1/9 TEIKYO POST\* W 74-38  
1/14 at Bloomfield\* L 64-65  
1/16 DOMINICAN (NY)\* W 60-56  
1/18 at Holy Family\* L 69-79  
1/21 FELICIAN\* W 82-77  
1/25 GOLDEY-BEACOM\* W 73-60  
1/28 at Nyack\* W 69-61

2/1 CALDWELL\* W 53-51  
2/5 at Teikyo Post\* L 59-65  
2/8 HOLY FAMILY\* L 50-61  
2/11 at USP\* L 55-58  
2/15 BLOOMFIELD\* W 59-56  
2/19 GEORGIAN COURT\* W 77-54  
2/22 WILMINGTON (DE)\* W 72-50  
2/26 at Caldwell+ L 63-64

\* CACC (15-7, 4th/12)

+ CACC Tournament

Coach: Kim Bowen

## 2003-04 (12-16)

11/21 at Assumption L 43-66  
11/22 vs. Stonehill L 56-73  
11/25 at Nyack\* W 79-61  
12/3 WILMINGTON (DE)\* W 62-50  
12/9 at Felician\* L 52-56  
12/12 at American Int'l L 52-86  
12/13 vs. Southern Conn. L 33-67  
12/20 GEORGIAN COURT\* W 68-49  
12/30 at Kutztown W 67-59  
1/5 CALDWELL\* L 68-71  
1/8 TEIKYO POST\* L 56-68  
1/13 BLOOMFIELD\* W 73-64  
1/15 at Dominican (NY)\* L 58-73  
1/17 at Holy Family\* L 58-93  
1/24 at Goldey-Beacom\* W 67-60  
1/27 NYACK\* W 68-52

1/29 at USP\* L 61-65  
1/31 at Caldwell\* (ot) W 91-89  
2/2 DOMINICAN (NY)\* L 61-67  
2/4 at Teikyo Post\* (2ot) W 97-94  
2/7 HOLY FAMILY\* L 52-84  
2/10 USP\* L 71-74  
2/14 at Bloomfield\* L 73-75  
2/18 at Georgian Court\* L 75-76  
2/21 at Wilmington (DE)\* W 54-45  
2/24 FELICIAN\* W 78-40  
2/26 GOLDEY-BEACOM\* W 68-43  
3/2 at USP+ L 52-92

\* CACC (11-11, T-6th/12)

+ CACC Tournament

Coach: Kim Bowen Lusk

## 2004-05 (18-12)

11/15 ASSUMPTION L 48-54  
11/19 vs. East Stroudsburg^ W 66-55  
11/20 at Kutztown^ (ot) L 68-69  
11/30 at Felician\* W 65-55  
12/2 GOLDEY-BEACOM\* W 98-72  
12/4 HOLY FAMILY\* L 53-73  
12/7 at Post\* W 62-49  
12/11 at USP\* L 55-70  
12/29 at Bryant# L 59-70  
12/30 vs. American Int'l L 58-77  
1/5 WILMINGTON (DE)\* L 72-74  
1/11 at Caldwell\* W 70-52

1/15 at Bloomfield L 68-84  
1/18 DOMINICAN (NY)\* W 47-35  
1/20 at Nyack\* W 73-46  
1/25 FELICIAN\* W 62-56  
1/27 at Goldey-Beacom\* W 83-54  
1/29 at Holy Family L 59-77  
2/1 POST\* W 77-49  
2/5 USP\* W 61-44  
2/8 GEORGIAN COURT\* W 71-63  
2/12 at Wilmington (DE)\* L 69-78  
2/15 CALDWELL\* W 77-56  
2/19 BLOOMFIELD\* W 73-55  
2/22 at Dominican (NY)\* W 68-64  
2/25 NYACK\* W 73-40  
2/26 at Georgian Court\* W 82-52  
3/2 DOMINICAN (NY)\$ W 67-45  
3/4 vs. Holy Family\$ L 73-84  
3/11 at Philadelphia U. I L 56-63

\*CACC

^Kutztown University Classic

#Comfort Suites Holiday Classic

\$CACC Tournament

!ECAC Tournament at Philadelphia

Coach: Kim Bowen Lusk

## THE LAST TIME A HIGHLANDER...

Kelly Crowe, 31  
vs. Holy Family, 3/4/05

Scored 30+ points

Never

Scored 40+ points

Kelly Crowe, 12  
vs. Teikyo Post, 2/4/04

Made 12+ field goals

SchrKya Massey, 27  
vs. Holy Family, 2/8/03

Attempted 25+ field goals

Aine O'Dwyer, 15  
at Georgian Court, 2/18/04

Had 15+ rebounds

Lauren Daley  
vs. NYIT, 1/22/00

Had 20+ rebounds

Kelly Crowe, 5  
vs. Holy Family 3/4/05

Made 5+ three-point field goals

Jackie McCaffrey, 13  
vs. Nyack, 2/21/05 (school record)

Had 10+ assists

Kelly Crowe, 10  
vs. Post, 12/7/04 (tied school record)

Had 10+ steals

Lauren Daley  
vs. Molloy, 1/5/00

Blocked 5+ shots

Kristie Simpson  
vs. St. Joseph's (NY), 2/19/96

Had a triple-double

SchrKya Massey (29-10) & Selena Kershaw (25-10)  
vs. Caldwell, 1/26/02

Had 20+ points and 10+ rebounds

Kelly Crowe, 48  
at Teikyo Post, 2/4/04

Played 41+ minutes

Melissa Czerencha, 46 & Courtney McGinnis, 46  
Teikyo Post, 2/11/03

## THE LAST TIME AN NJIT OPPONENT...

Jayme Gray, 30  
Caldwell, 1/31/04

Tysell Bozeman, 46  
Felician, 1/21/03

Jayme Gray, 12  
Caldwell, 1/31/04

Tysell Bozeman, 44  
Felician, 1/21/03

Tadj Williams, 15  
Post, 12/7/04

Kandice Harper, 20  
Bloomfield, 2/14/04

Melissa Elsbree, 5  
Georgian Court, 2/18/04

Kate Baun, 12  
Holy Family, 2/7/04

Chris Arteaga  
Rutgers-Newark, 11/22/96

Megan Bauer, 5  
Holy Family, 3/4/05

Tysell Bozeman  
Felician, 1/15/02

Leah Shumoski (24-10)  
USP, 3/2/04

## THE LAST TIME THE HIGHLANDERS...

2/1/99 vs. Dowling

Shot 55+ percent from the floor

12/13/04 vs. Southern Connecticut (22.8)

Shot 25- percent from the floor

3/2/04 at USP (87.5)

Shot 85+ percent at the foul line

1/15/02 vs. Felician (11)

Made 10+ three-point field goals

12/2/04 vs. Goldey-Beacom (98)

Scored 90+ points

2/13/04 vs. Southern Connecticut (33)

Scored 40- points

2/26/05 at Georgian Court (82-52)

Won by 30+ points

## THE LAST TIME AN NJIT OPPONENT...

2/12/05 by Wilmington (56.9)

2/1/05 by Post (21.2)

1/18/03 by Holy Family (85.7)

2/16/02 by Wilmington (10)

3/2/04 by USP (92)

2/24/04 by Felician (40)

3/2/04 by USP (92-52)



## — A —

ALVAREZ, Jady 04  
ALVAREZ, Liliana 91,92,93,94  
AUGUSTINE, Joann 95

## — B —

BALDWIN, Ayisha 97  
BALLOU, Nicole 00,01,02,03  
BATTISTA, Laura 94,95  
BEGASSE, Eileen 87  
BELBO, Nancy 94  
BERNARDO, Carolena 87  
BROWN, Jessica 88  
BURNEY, Teresa 93,94

## — C —

CALWER, Heike 91  
CORSARO, Denise 87  
COURTNEY, Schevilla 96  
CROWE, Kelly 04,05  
CRUZ, Iris 88,90,92

## — D —

DALEY, Lauren 99,00  
DASH, Sharon 90  
DAUMER, Kate 05  
DAVILA, Naida 97  
DAWSON, Marilyn 87  
DIXON, Shonte 03,04  
DOMONKOS, Eileen 92,93  
DUNCAN, Kate 01,02,03,04  
DYER, Quinda 94

## — E —

EBEWO, Eti 04,05  
ENGLAND, Button 02

## — F —

FELIZ, Tania 97,98  
FOGG, Tamika 96,97  
FORTIER, Linda 88  
FOSTER, Takiya 02  
FUKAZAWA, Ursula 91  
FUSCO, Elisa 88

## — G —

GARNER, Tywana 90  
GAVIN, Kerri Ann 99  
GOLDRICK, Liz 87,90  
GRANT, Natasha 91,93  
GRAY, Winsome 90  
GRUENEWALD, Wendy 93,94,95,96  
GUARDADO, Luisa 96,97,99  
GUY, Laquana 01  
GYURICZA, Emese 05

## — H —

HEMINGWAY, Denaya 04,05  
HICKMAN, Jamie 92  
HOBSON, Renee 88,90,92  
HRNCIAR, Kim 92  
HUFNAGEL, Elaine 91

## — J —

JENERSON, Elizabeth 02  
JOHNSON, Hanifa 95,96  
JORDAN, Tennille 99,00,01,02  
JOSEPH, Jennifer 91,94

## — K —

KERSHAW, Selena 02,03,04,05  
KUBIAK, Gretchen 99  
KUKAL, Sharon 98,99

## — L —

LUPO, Jackie 03,04,05

## — M —

MACK, Alexis 93,95  
MACK, Demesha 90  
MALINOWSKI, Tracey 87  
MALLORY, Colette 94  
MALOON, Merna 98  
MASSEY, SchrKya 02,03  
McCAFFREY, Jackie 05  
McMILLIAN, Dion 87,88  
McNAIR, Tamara 96,97,98  
MITROVIC, Sandy 93  
MOSLEY, Kyrra 96  
MULLEN, Veronica 99,00

## — N —

NEIRA, Lisa 05

## — O —

OCHS, Gina 91  
O'CONNOR, Jackie 98,99,00,01  
O'DWYER, Aine 04,05

## — P —

PANTANO, Lisa 95  
PATRIKIOS, Stephanie 01,02  
POLIMEDA, Joie 98  
PRESENDIEU, Aulina 99,00,01  
PYRON, Odelia 98,99,00,01

## — R —

RAFF, Michele 94  
REGGO, Lindsey 01,02,03,04  
RICHARDSON, Tiffany 95  
ROBERTS, Deborah 92,93,94  
ROBINSON, Erica 90  
ROBINSON, Sharae 03  
RODRIGUEZ, Brenda 95

RODRIGUEZ, Natalie 96,97,98  
ROESSNER, Chrissa 98

## — S —

SAMMS, Chevanese 01,02,03  
SCHMIDT, Diane 95  
SIMPSON, Kristie 95,96  
SMITH, Darnella 88  
SNEED, Brandy 02

## — T —

THIBEAUD, Lucie 91,92,93,94  
THOMSON, Deanra 92  
TRUKOWSKI, Tracy 94  
TRYMAN, Naima 99  
TUDOR, Lauren 00  
TURNBULL, Breanna 03,04,05

## — U —

ULLOA, Alba 97

## — V —

VAN WRIGHT, Nevea 92,93,94,96  
VELEZ, Erika 04,05  
VOGEL, Jessica 03,04,05

## — W —

WASHINGTON, Lisa 87  
WEBER, Cynthia 95  
WINCHESTER, Melsha 98,99,00,01  
WOMACK, Racquel 93  
WORLEY, Sandy 88,90

## — Z —

ZAMBRANO, Claudia 97,98  
ZIEMBA, Melissa 96

*Note: Only second year of playing season is listed; i.e., 95 = 1994-95 season.*

## ALL-TIME RECORDS VS. OPPONENTS

Adelphi .....	0-6	Kutztown.....	1-4	Saint Leo .....	0-2
American International .....	0-2	La Roche .....	1-0	St. Paul's .....	0-1
Assumption .....	0-2	Lehman .....	2-0	Saint Rose .....	0-6
Bard .....	2-0	Lynn .....	0-1	St. Thomas Aquinas .....	0-1
Baruch .....	4-0	Manhattanville .....	1-3	<b>USP .....</b>	<b>3-8</b>
Bethel .....	0-1	Medgar Evers .....	3-1	Southampton .....	0-9
<b>Bloomfield .....</b>	<b>4-13</b>	Mercy .....	3-4	Southern Connecticut.....	0-1
Bridgeport.....	0-1	Molloy .....	3-4	Staten Island .....	2-2
Bryant .....	0-1	Montclair State .....	0-1	Stevens Tech .....	2-0
<b>Caldwell .....</b>	<b>5-12</b>	Mt. St. Mary (NY).....	0-12	Stonehill .....	0-2
Centenary (NJ) .....	6-8	Mt. St. Vincent.....	8-7	Upsala .....	0-11
CCNY .....	4-0	Nazareth .....	0-1	Vassar .....	1-1
Concordia (NY) .....	4-2	<b>Nebraska-Kearney .....</b>	<b>0-0</b>	<b>Virginia-Wise .....</b>	<b>0-0</b>
CW Post.....	2-4	New Haven .....	0-2	Warner Southern .....	0-1
District of Columbia .....	1-3	New Jersey, Coll. of .....	0-1	William Paterson .....	0-1
<b>Dominican (NY) .....</b>	<b>6-6</b>	New Rochelle .....	2-0	<b>Wilmington (DE) .....</b>	<b>7-3</b>
Dowling .....	3-3	New York Maritime .....	8-1	Yeshiva .....	7-0
Drew .....	2-7	NYIT .....	4-0	York (NY) .....	5-2
East Stroudsburg .....	1-0	Notre Dame (RI) .....	0-1		
Eckerd .....	0-2	<b>Nyack .....</b>	<b>8-2</b>		
Elizabeth City .....	0-1	<b>Oklahoma Christian .....</b>	<b>0-0</b>		
FDU-Madison .....	0-15	Old Westbury.....	1-4		
<b>Felician .....</b>	<b>6-4</b>	<b>Philadelphia .....</b>	<b>0-8</b>		
Georgian Court .....	6-6	<b>Post.....</b>	<b>7-3</b>		
Goldie-Beacom .....	10-0	Queens (NY) .....	6-1		
Greensboro .....	0-1	Richard Stockton .....	0-3		
<b>Holy Family .....</b>	<b>0-11</b>	Rutgers-Newark.....	0-2		
Houghton .....	0-1	St. Augustine.....	0-2		
Hunter .....	1-2	St. Elizabeth .....	4-15		
John Jay .....	1-0	St. Joseph's (Brooklyn).....	1-0		
Johns Hopkins .....	0-1	St. Joseph's (LI) .....	3-1		

2005-06 opponents in bold

**Total Division II**  
92-128, .418

**Total Division III**  
69-122, .361

**All-time**  
161-250, .392



## KUTZTOWN UNIVERSITY

Nov. 22, 6 pm at Fleisher Athletic Center

### GENERAL INFORMATION

**Location:** Kutztown, PA  
**Founded:** 1866  
**Enrollment:** 9,400  
**Nickname:** Golden Bears  
**Colors:** Maroon and Gold  
**Home court (capacity):** Keystone Hall (3,400)  
**Affiliations:** NCAA Division II  
**Conference:** Pennsylvania State Athletic (East)  
**President:** Dr. F. Javier Cevallos  
**Director of Athletics:** Greg Bamberger

### SPORTS INFORMATION

**Basketball Contact:** Josh Leiboff  
**Office phone:** (610) 683-4182  
**E-mail:** leiboff@kutztown.edu

### BASKETBALL

**Head coach:** Janet Malouf (Rutgers '89)  
**(alma mater, year):** [610] 683-4467  
**Career record (years):** 175-125 (12)  
**Record at school (years):** same  
**2004-05 overall record:** 12-15  
**Conference record/finish:** 5-7/4th  
**Starters returning/lost:** 4/1  
**Letterwinners returning/lost:** 12/2



## CALDWELL COLLEGE

Nov. 29, 6 pm at Fleisher Athletic Center  
 Feb. 18, 6 pm at Caldwell, NJ

### GENERAL INFORMATION

**Location:** Caldwell, NJ  
**Founded:** 1939  
**Enrollment:** 2,270  
**Nickname:** Cougars  
**Colors:** Scarlet, White and Gold  
**Home court (capacity):** George R. Newman Center (1,800)  
**Affiliations:** NCAA Division II, ECAC  
**Conference:** Central Atlantic Collegiate Conference  
**President:** Sister Patrice Werner  
**Director of Athletics:** Mark A. Corino

### SPORTS INFORMATION

**Basketball Contact:** Matt McLagan  
**Office phone:** (973) 618-3567  
**E-mail:** mmclagan@caldwell.edu

### BASKETBALL

**Head coach:** Nicole Durnien-Amato  
**Career record (years):** 83-59 (5)  
**Record at school (years):** same  
**2004-05 overall record:** 9-19  
**Conference record/finish:** 8-14/9th  
**Starters returning/lost:** 7/2  
**Letterwinners returning/lost:** 4/1



## HOLY FAMILY UNIVERSITY

Dec. 1, 6 pm at Fleisher Athletic Center  
 Feb. 14, 6pm at Philadelphia, PA

### GENERAL INFORMATION

**Location:** Philadelphia, PA  
**Founded:** 1954  
**Enrollment:** 2,100 undergraduate  
**Nickname:** Tigers  
**Colors:** White & Blue  
**Home court:** College Center  
**Affiliations:** NCAA Division II, ECAC  
**Conference:** Central Atlantic Collegiate Conference  
**President:** Sister Francesca Onley  
**Director of Athletics:** Sandra Michael

### SPORTS INFORMATION

**Basketball Contact:** James Wagner  
**Office phone:** (215) 637-7700 x3488  
**E-mail:** jwagner@holyfamily.edu

### BASKETBALL

**Head coach:** Mike McLaughlin  
**Career record (years):** 291-48 (11)  
**Record at school (years):** same  
**2004-05 overall record:** 25-6  
**Conference record/finish:** 21-1/1st  
**Postseason:** CACC Champions (def. Post 84-52; def. NJIT 84-73; def. USP 65-59); NCAA (lost to AIC, 55-76)



## GOLDEY-BEACOM COLLEGE

Dec. 3, 1 pm at Wilmington, DE  
 Jan. 28, 1 pm at Fleisher Athletic Center

### GENERAL INFORMATION

**Location:** Wilmington, DE  
**Founded:** 1886  
**Enrollment:** 1,700  
**Nickname:** Lightning  
**Colors:** Blue and Gold  
**Home court:** MBNA America Hall  
**Affiliations:** NCAA Division II, ECAC  
**Conference:** Central Atlantic Collegiate Conference  
**President:** Dr. Mohammed Ilyas  
**Director of Athletics:** Chris Morgan

### SPORTS INFORMATION

**Basketball Contact:** Jennifer Smith  
**Office phone:** (302) 225-6224  
**E-mail:** smithj@gbcc.edu

### BASKETBALL

**Head coach:** Jennifer Smith  
**Career record (years):** First year  
**Record at school (years):** same  
**2004-05 overall record:** 5-22  
**Conference record/finish:** 4-18/10th



## BLOOMFIELD COLLEGE

Dec. 6, 6 pm at Bloomfield, NJ  
 Jan. 26, 6 pm at Fleisher Athletic Center

### GENERAL INFORMATION

**Location:** Bloomfield, NJ  
**Founded:** 1868  
**Enrollment:** 2,300  
**Nickname:** Deacons  
**Colors:** Maroon and Gold  
**Home court:** Bloomfield College Gymnasium  
**Affiliations:** NCAA Division II, ECAC  
**Conference:** Central Atlantic Collegiate Conference  
**President:** Richard A. Levao  
**Director of Athletics:** Sheila Wooten

### SPORTS INFORMATION

**Basketball Contact:** Gladstone Harris  
**Office phone:** (973) 748-9000 x362  
**E-mail:** gladstone\_harris@bloomfield.edu

### BASKETBALL

**Head coach:** Jerry Wimberly (Savannah State, '90)  
**Career record (years):** 35-24 (2)  
**Record at school (years):** same  
**2004-05 overall record:** 21-9  
**Conference record/finish:** 19-3/2nd  
**Postseason:** CACC Tournament (def. Wilmington, 67-64; lost to USP, 60-78); ECAC (lost to Southampton, 68-71).  
**Starters returning/lost:** 3/2



## NYACK COLLEGE

Dec. 10, 1 pm at Fleisher Athletic Center  
 Jan. 31, 6 pm at Nyack, NY

### GENERAL INFORMATION

**Location:** Nyack, NY  
**Founded:** 1882  
**Undergraduate Enrollment:** 970  
**Nickname:** Warriors  
**Colors:** Crimson, Grey and Navy  
**Home court:** Bowman Gymnasium  
**Affiliations:** NCAA Division II, NCCAA I  
**Conference:** Central Atlantic Collegiate Conference  
**President:** David Jennings  
**Director of Athletics:** Keith Davie

### SPORTS INFORMATION

**Basketball Contact:** Josh Thompson  
**Office phone:** (845) 358-1710 x512  
**E-mail:** josh.thompson@nyack.edu

### BASKETBALL

**Head coach:** Josh Thompson  
**Career record (years):** 13-69 (3)  
**Record at school (years):** same  
**2004-05 overall record:** 3-24  
**Conference record/finish:** 3-19/12  
**Starters returning/lost:** 3/2





## GEORGIAN COURT UNIVERSITY

*Dec. 12, 7 pm at Lakewood, NJ  
Feb. 21, 6 pm at Fleisher Athletic Center*

### GENERAL INFORMATION

**Location:** Lakewood, NJ  
**Founded:** 1908  
**Enrollment:** 2,500  
**Nickname:** Lions  
**Colors:** Blue and Gold  
**Home court (capacity):** The Casino (800)  
**Affiliations:** NCAA Division II, ECAC  
**Conference:** Central Atlantic Collegiate Conference  
**President:** Sr. Rosemary Jefferies  
**Director of Athletics:** Laura Liesman

### SPORTS INFORMATION

**Basketball Contact:** Dave Pizzuto  
**Office phone:** (732) 987-2690  
**E-mail:** pizzuto@dgeorgian.edu

### BASKETBALL

**Head coach:** Brad Campbell  
**Coach's office phone:** (732) 987-2605  
**Career record (years):** 4-23 (1)  
**Record at school (years):** same  
**2004-05 overall record:** 4-23  
**Conference record/finish:** 3-19 (t-11th)  
**Starters returning/lost:** 3/2  
**Letterwinners returning/lost:** 6/4



## UNIVERSITY OF NEBRASKA AT KEARNEY

*Dec. 28, 5 pm at South Padre Island, TX  
South Padre Island Shootout*

### GENERAL INFORMATION

**Location:** Kearney, NE  
**Founded:** 1905  
**Enrollment:** 6,500  
**Nickname:** Antelopes (Lopers)  
**Colors:** Royal blue and old gold  
**Home court (capacity):** Health & Sports Center (5,700)  
**Affiliations:** NCAA Division II  
**Conference:** Mountain Athletic (East Region)  
**President:** Doug Kristensen  
**Director of Athletics:** Jon McBride

### SPORTS INFORMATION

**Basketball Contact:** Peter Yazvac  
**Office phone:** (308) 865-8334  
**E-mail:** yazvacpi@unk.edu

### BASKETBALL

**Head coach:** Carol Russell (UNL '93)  
**(alma mater, year):** [308] 865-8330  
**Coach's office phone:** 64-26 (3)  
**Career record (years):** 14-14  
**Record at school (years):** same  
**2004-05 overall record:** 12-7/4  
**Conference record/finish:** 3/2  
**Starters returning/lost:** 5/6  
**Letterwinners returning/lost:** 5/6



## OKLAHOMA CHRISTIAN UNIVERSITY

*Dec. 29, 5/7 pm at South Padre Island, TX  
South Padre Island Shootout*

### GENERAL INFORMATION

**Location:** Oklahoma City, OK  
**Founded:** 1950  
**Enrollment:** 2,000  
**Nickname:** Lady Eagles  
**Colors:** Atlantic Maroon, Silver Gray  
**Home court (capacity):** Eagles' Nest (2,300)  
**Affiliations:** NAIA Division I  
**Conference:** Sooner Athletic Conference  
**President:** Mike O'Neal, Ph.D.  
**Director of Athletics:** DeWayne Hall

### SPORTS INFORMATION

**Basketball Contact:** Stan Green  
**Office phone:** (405) 425-5363  
**Fax:** (405) 425-5351  
**E-mail:** stan.green@ocu.edu

### BASKETBALL

**Head coach:** Stephanie Findley  
**(alma mater, year):** [Oklahoma Christian, '82]  
**Coach's office phone:** (405) 425-5355  
**Career record (years):** 400-235 (21)  
**Record at school (years):** same  
**2004-05 overall record:** 25-8  
**Conference record/finish:** 14-4  
**Starters returning/lost:** 5/0  
**Letterwinners returning/lost:** 11/6



## THE UNIVERSITY OF VIRGINIA'S COLLEGE AT WISE

*Dec. 29, 5/7 pm at South Padre Island, TX  
South Padre Island Shootout*

### GENERAL INFORMATION

**Location:** Wise, VA  
**Founded:** 1954  
**Enrollment:** 1,900  
**Nickname:** Cavaliers  
**Colors:** Red & grey  
**Home court (capacity):** Greear Gym (1,500)  
**Affiliations:** NCAA Division II  
**Conference:** Appalachian Athletic Conference  
**President:** Wayne Edwards  
**Director of Athletics:** Ray Spinella

### SPORTS INFORMATION

**Basketball Contact:** Chris Meyers  
**Office phone:** (276) 328-0188  
**E-mail:** csm62@uvawise.edu

### BASKETBALL

**Head coach:** Rachel Clay-Keohane  
**Coach's office phone:** (276) 328-0205  
**Career record (years):** 46-136 (7)  
**Record at school (years):** same  
**2004-05 overall record:** 11-18  
**Conference record/finish:** 11-11  
**Starters returning/lost:** 5/0  
**Letterwinners returning/lost:** 6/3



## UNIVERSITY OF THE SCIENCES IN PHILADELPHIA

*Jan. 7, 1 pm at Philadelphia, PA  
Feb. 2, 1pm at Fleisher Athletic Center*

### GENERAL INFORMATION

**Location:** Philadelphia, PA  
**Founded:** 1821  
**Enrollment:** 2,450  
**Nickname:** Devils  
**Colors:** Cardinal and Silver  
**Home court (capacity):** Bobby Morgan Arena  
**Affiliations:** NCAA Division II, ECAC  
**Conference:** Central Atlantic Collegiate Conference  
**President:** Dr. Philip Gerbino  
**Director of Athletics:** Robert Morgan

### SPORTS INFORMATION

**Basketball Contact:** Bob Heller  
**Office phone:** (215) 895-3133  
**E-mail:** r.heller@usp.edu

### BASKETBALL

**Head coach:** Nate Ware (East Tenn. State, '69)  
**(alma mater, year):** [215] 596-7428  
**Coach's office phone:** 67-46 (4)  
**Career record (years):** 21-9  
**Record at school (years):** same  
**2004-05 overall record:** 17-5/2nd  
**Conference record/finish:** CACC Tournament (def. Felician '06; 67; def. Bloomfield 78-60; lost to Holy Family 59-65)  
**Postseason:** 5/0  
**Starters returning/lost:** 5/0  
**Letterwinners returning/lost:** 12/2



## WILMINGTON COLLEGE

*Jan. 10, 6p.m. at Fleisher Athletic Center  
Jan. 24, 6p.m. at New Castle, DE*

### GENERAL INFORMATION

**Location:** New Castle, DE  
**Founded:** 1968  
**Enrollment:** 10,002  
**Nickname:** Wildcats  
**Colors:** Forest Green and White  
**Home court:** Pratt Gymnasium  
**Affiliations:** NCAA Division II, ECAC  
**Conference:** Central Atlantic Collegiate Conference  
**President:** Dr. Audrey K. Doberstein  
**Director of Athletics:** Frank C. Aiello

### SPORTS INFORMATION

**Basketball Contact:** Erin T. Harvey  
**Office phone:** (302) 328-9435  
**E-mail:** erin.t.harvey@wilmcoll.edu

### BASKETBALL

**Head coach:** Bill Cleary  
**Coach's office phone:** (302) 328-9425  
**Career record (years):** 16-38 (3)  
**Record at school (years):** same  
**2004-05 overall record:** 14-14  
**Conference record/finish:** 10-12  
**Starters returning/lost:** 5/4  
**Letterwinners returning/lost:** 3/2





## PHILADELPHIA UNIVERSITY

Jan. 12, 6 pm at Philadelphia, PA  
Feb. 11, 1 pm at Fleisher Athletic Center

### GENERAL INFORMATION

**Location:** Philadelphia, PA  
**Founded:** 1884  
**Enrollment:** 2,465  
**Nickname:** Rams  
**Colors:** Maroon & Grey  
**Home court (capacity):** Bucky Harris Gymnasium (1,000)  
**Affiliations:** NCAA Division II, ECAC  
**Conference:** Central Atlantic Collegiate Conference  
**President:** Dr. James P. Gallagher  
**Director of Athletics:** Tom Shirley

### SPORTS INFORMATION

**Basketball Contact:** Tony Berich  
**Office phone:** (215) 951-2852 x1  
**E-mail:** bericht@philau.edu

### BASKETBALL

**Head coach:** Tom Shirley (Allentown, '76)  
**Coach's office phone:** (215) 951-2720  
**Career record (years):** 494-219 (24)  
**Record at school (years):** 345-146 (16)  
**2004-05 overall record:** 20-13  
**Conference record/finish:** 17-7 (T2nd, NYCAC)  
**Postseason:** ECAC (def. NJIT, 63-56; lost to Southampton, 63-68)  
**Starters returning/lost:** 9/3  
**Letterwinners returning/lost:** 3/2



## FELICIAN COLLEGE

Jan. 17, 6 pm at Fleisher Athletic Center  
Feb. 4, 1 pm at Rutherford, NJ

### GENERAL INFORMATION

**Location:** Rutherford, NJ  
**Founded:** 1893  
**Enrollment:** 1,700  
**Nickname:** Golden Falcons  
**Colors:** Hunter Green & Goldenrod  
**Home court (capacity):** Joal & Joe Job Gymnasium  
**Affiliations:** NCAA Division II, ECAC  
**Conference:** Central Atlantic Collegiate Conference  
**President:** Sr. Theresa Mary Martin  
**Director of Athletics:** Ben DiNallo, Jr.

### SPORTS INFORMATION

**Basketball Contact:** Ben DiNallo, Jr.  
**Office phone:** (201) 559-3507  
**E-mail:** dinallo@felician.edu

### BASKETBALL

**Head coach:** Jay Latko  
**Coach's office phone:** (201) 559-3906  
**Career record (years):** first year  
**Record at school (years):** same  
**2004-05 overall record:** 11-17  
**Conference record/finish:** 11-11/6th  
**Starters returning/lost:** 4/1  
**Letterwinners returning/lost:** 12/5



## POST UNIVERSITY

Jan. 19, 6 pm at Waterbury, CT  
Feb. 25, 1 pm at Fleisher Athletic Center

### GENERAL INFORMATION

**Location:** Waterbury, CT  
**Founded:** 1890  
**Enrollment:** 1,600  
**Nickname:** Eagles  
**Colors:** Forest Green, Black and White  
**Home court:** Drubner Center  
**Affiliations:** NCAA Division II, ECAC  
**Conference:** Central Atlantic Collegiate Conference  
**President:** Dr. Jon Jay DeTemple  
**Director of Athletics:** Dan Mara

### SPORTS INFORMATION

**Basketball Contact:** Tim McCaffrey  
**Office phone:** (203) 596-4533  
**E-mail:** tmccaffrey@post.edu

### BASKETBALL

**Head coach:** Todd McEvoy  
**Coach's office phone:** (203) 596-4534  
**Career record (years):** 8-20 (1)  
**Record at school (years):** same  
**2004-05 overall record:** 8-20  
**Conference record/finish:** 8-14/9th



## DOMINICAN COLLEGE

Jan. 21, 1 pm at Fleisher Athletic Center  
Feb. 7, 6 pm at Orangeburg, NY

### GENERAL INFORMATION

**Location:** Orangeburg, NY  
**Founded:** 1952  
**Enrollment:** 850 - full time undergraduate  
**Nickname:** Chargers  
**Colors:** red, white, black  
**Home court (capacity):** Hennessey Center  
**Affiliations:** NCAA Division II, ECAC  
**Conference:** Central Atlantic Collegiate Conference  
**President:** Sister Mary Eileen O'Brien  
**Director of Athletics:** Joe Clinton

### SPORTS INFORMATION

**Basketball Contact:** Kelly-Ann Di Giulio  
**Office phone:** (845) 398-3008/9  
**E-mail:** kellyann.digiulio@dc.edu

### BASKETBALL

**Head coach:** John Burke  
**Coach's office phone:** (845) 398-3008/3009  
**Career record (years):** 59-52 (5)  
**Record at school (years):** same  
**2004-05 overall record:** 14-14  
**Conference record/finish:** 12-10/5th  
**Postseason:** CACC Tournament (lost to NJIT, 45-67)  
**Starters returning/lost:** 5/0  
**Letterwinners returning/lost:** 8/4



After just two seasons, guard Kelly Crowe ranks among the leaders in eight major career statistical categories.





## By Car

**Garden State Parkway (GSP):** Take Exit 145 to Route 280 East, then follow Route 280 East directions.

**New Jersey Turnpike:** Take Exit 15W to Route 280 West, then follow Route 280 West directions.



**Route 280 West:** After drawbridge, take Exit 14B (Broad Street/King Blvd.). At bottom of exit ramp, make a left. Go one block to stop sign. Make a left on King Blvd. Go five lights to Warren Street. Make a right on Warren Street. Go two blocks to Colden Street. Make a left on Colden Street. Follow signs to NJIT Parking Deck.

**Route 280 East:** Take Exit 13 (First Street/Newark). At light, make a right on First Street. Go three lights to W. Market Street. Make the soft left on W. Market Street. Go four lights to King Blvd. Make a left on King Blvd. Go one light to Warren Street. Make a left on Warren Street. Go two blocks to Colden Street. Make a left on Colden Street. Follow signs to NJIT Parking Deck.

**Route 1 & 9 North & South:** Take exit marked Newark, Route 21 (McCarter Highway). Cross bridge. At light at end of bridge, make quick left then quick right for Broad Street. (There are clear signs for Broad Street) Go about 1 mile. Make a left on Court Street. Make a right at third light on King Blvd. Make a left at fifth light on Warren Street. Go two blocks to Colden Street. Make a left on Colden Street. Follow signs to NJIT Parking Deck.

**Route 78:** Take Route 78 to the Garden State Parkway. Follow GSP directions.

**Route 22:** Take Route 22 to Route 21 North. Follow directions for Route 21 North.

**Route 21 North:** Turn left onto Raymond Boulevard. When Raymond Boulevard turns into Lock Street, turn right onto Warren Street. Turn right onto Colden Street and follow signs to the NJIT parking deck.

**Route 21 South:** From 21 South, turn right on Bridge Street. Turn left on Broad Street. Go one block and turn right on Washington Place. Go one block and turn left on Halsey Street. Go one block and turn right on Central Avenue. Make the third left on King Blvd. At first light, turn right on Warren Street. Go two blocks to Colden Street. Make a left on Colden Street. Follow signs to NJIT Parking Deck.

**New York Thruway:** Thruway to Exit 14A, Garden State Parkway. Follow GSP directions above.

**George Washington Bridge:** NJ Turnpike South to Exit 15W. Follow Route 280 West directions above.

**Lincoln Tunnel:** West on Route 3 to NJ Turnpike South to Exit 15W. Follow Route 280 West directions above.

**From Brooklyn, Queens & Long Island:** Take Verrazano-Narrows Bridge (Interstate 278) and follow 278 across Staten Island. Cross Goethels Bridge. Follow signs to New Jersey Turnpike North then follow New Jersey Turnpike directions above.

## Other Transportation Systems

**Newark International Airport:** Five miles from the NJIT campus. A minibus (Newark Airlink) or taxi service connects the airport with Penn Station in Newark. Bus, city subway, and taxi connections may be obtained at the station.

**Newark Penn Station:** Connections to the NJIT campus may be made by bus, city subway, or taxi.

**Morris & Essex Broad Street Station:** A five-block walk to the NJIT campus via King Boulevard to Central Avenue. Taxi service is also available.

**Newark City Subway:** From Penn Station in Newark, take the Warren Street stop for the NJIT campus.

## Downtown Hotels

### Comfort Suites

1348 McCarter Highway, Newark  
973/481-5200

**Hampton Inn & Suites Newark Riverwalk**  
100 Passaic Avenue, 973/483-1900

### Hilton Newark Gateway

Gateway Center, Raymond Blvd. & McCarter Highway, 973/622-5000

### Robert Treat Hotel

50 Park Place, Newark, 973/622-1000

## Hotels Near Newark Airport

### Best Western Newark Airport West

101 International Way, Newark  
973/621-6200

### Courtyard by Marriot Newark Liberty International Airport

600 Route 1 & 9, Newark, 973/643-8500

### Days Inn Newark

450 Rt.1 South (near Haynes Ave.), Newark  
973/242-0900

### Fairfield Inn & Suites Newark Liberty International Airport

618 Rt.1 & 9 South, Newark  
973/242-2600

### Four Points by Sheraton Newark Airport

901 Spring St., Elizabeth, 908/527-1600

### Hampton Inn Newark Airport

1128-38 Spring St., Elizabeth  
908/355-0500

### Hilton Newark Airport

1170 Spring St., Elizabeth  
908/351-3900

### Holiday Inn Newark Liberty International Airport

160 Frontage Rd., Newark, 973/589-1000

### Newark Liberty International Airport Marriott

Newark Liberty International Airport, Newark, 973/623-0006

### Ramada Inn Newark Liberty International Airport

550 Rt.1 & 9 South, Newark  
973/824-4000

### Sheraton Newark Airport Hotel

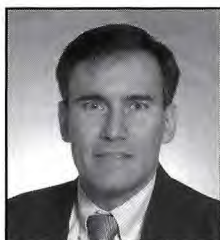
128 Frontage Rd., Newark  
973/690-5500

### Wyndham Newark Airport

1000 Spring St., Elizabeth, 908/436-4600



# Athletics/Physical Education Staff



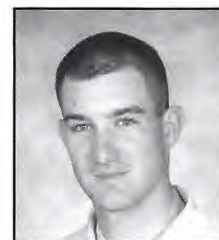
**Adalberto M. Alonso**  
Head M/W Cross-Country  
(973) 596-3636  
alonso@njit.edu



**Phil Baboulis**  
Head Women's Tennis  
Head Men's Tennis  
(973) 596-3636  
pbtennis@optonline.net



**Joe Caiola**  
Asst. Director of Athletics/  
Business & Facilities  
(973) 642-7224  
caiola@adm.njit.edu



**Brian Callahan**  
Head Baseball  
(973) 596-5827  
callahan@njit.edu



**Tim Camp**  
Asst. Director of Athletics  
Sports Information  
(973) 596-8324  
timothy.camp@njit.edu



**Jim Casciano**  
Asst. Director of Athletics/  
Head Men's Basketball  
(973) 596-5727  
casciano@adm.njit.edu



**Dr. Roy Cornely**  
Faculty Athletics Rep.  
(973) 596-3537  
cornely@adm.njit.edu



**Duane Felczak**  
Asst. Director of Phys. Ed.  
(973) 596-3637  
felczak@adm.njit.edu



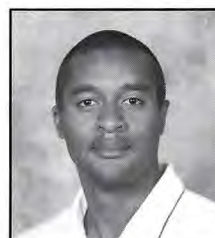
**Damien Franolich**  
Asst. Athletic Trainer  
(973) 596-3623  
franlich@adm.njit.edu



**Maria Honorio**  
Head Athletic Trainer  
(973) 596-3623  
maria.honorio@njit.edu



**Lenny Kaplan**  
Director of Athletics  
(973) 596-3636  
kaplan@adm.njit.edu



**Kevin Leacock**  
Operations Manager  
(973) 596-8239  
leacock@njit.edu



**Pedro Lopes**  
Head Men's Soccer  
(973) 596-5219  
pedro.j.lopes@njit.edu



**Kim Bowen Lusk**  
Asst. Dir. of Athletics  
Head Women's Basketball  
(973) 596-3633  
bowen@adm.njit.edu



**Ryan McNeil**  
Head Men's Volleyball  
Interim Head Women's Volleyball  
Co-Intramural Director  
(973) 596-5380



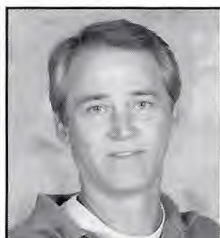
**Michelle Pautler**  
Receptionist  
(973) 596-3636  
mlp2@njit.edu



**Stephanie Pillari**  
Asst. Sports Information Director  
(973) 596-8324  
pillari@adm.njit.edu



**Alyssa Radu**  
Head Women's Soccer/SWA  
(973) 596-2928  
radu@adm.njit.edu



**Eric Rasmussen**  
Head Men & Women's Swimming  
(973) 596-5229  
rasmussen@njit.edu



**Mac Shaker**  
Head Men & Women's Fencing  
(973) 596-8490  
shaker@njit.edu



**Jonathan Walker**  
Front Desk Attendant  
Equipment Specialist  
(973) 596-5730



**Tim Wuorinen**  
Asst. Director of Athletics/  
Compliance & Eligibility  
(973) 596-5278  
wuorinen@adm.njit.edu



# NJIT Alumni Athletic Hall of Fame

Name	Grad. Year	Contribution	Sport(s)	Years	Year of Induction
BAUDER, Fred "Coach"	--	Coach	M-Basketball	1932-61	1989
BAKUN, Andrew I.	1982	Athlete	M-Soccer	1978-81	2005
		Asst. Coach	M-Soccer	1990-91	
BAKUN, Myron	1967	Athlete	M-Soccer	1964-66	1991
BLUM, Raymond E.	1950	Distinguished Alum.	Speedskating/Cycling	--	1996
BORJA, Hernan "Chico"	1981	Athlete	M-Soccer	1977-80	1986
BORNAKO, Gregory "Egor"	1970	Athlete	M-Fencing	1966-70	1987
BOWSER, Hamilton V.	1952	Athlete	M-Fencing	1948-52	1989
BRADLEY, Thomas	1978	Athlete	M-Swimming	1974-78	1990
CRUZ, Edward	1963	Athlete	M-Soccer	1959-62	1995
DAWSON, Marilyn E.	1986	Athlete	WVB/WBKB/SB	1982-86	1991
DeNICOLA, Carmine P.	1978	Athlete	Baseball	1975-78	2005
DeVITO, Louis	1960	Athlete	M-Soccer/M-Fencing	1956-60	1992
DIAS, Joe A.	1977	Athlete	M-Soccer	1973-76	1993
DRURY, Eugene M.	1963	Athlete	M-Tennis	1960-63	1988
ETIENNE, Yves	1979	Athlete	M-Volleyball	1976-78	1990
FEHN, Gilbert F.	1940	Athlete	M-Basketball/M-Tennis	1936-40	1992
FITZGERALD, Joseph M.	--	Coach	M-Basketball	1961-66	1986
		Asst. Coach	M-Basketball	1952-61	
FLEISHER, Seymour "Zoom"	1951	Athlete	M-Basketball	1947-51	1992
GAGLIARDO, Salvatore A.	1985	Athlete	M-Basketball	1981-85	1995
GALLAGHER, Thomas G.	1985	Athlete	M-Basketball	1981-85	1991
GIOVANNOLI, Arnold L.	1953	Athlete	M-Basketball	1950-53	1993
GOLDRICK PITT, Elizabeth M.	1990	Athlete	WVB/SB/WBKB/WTen	1985-90	1995
GRUENEWALD, Wendy A.	1997	Athlete	WBKB/SB/WVB/WSoc	1992-96	2003
HAASE, Jay W.	1975	Athlete	M-Fencing	1971-75	1988
HAMMOND, Kenneth W.	1979	Athlete	M-Soccer	1974-77	2003
HANDWERKER, Andy	1963	Athlete	M-Soccer	1959-62	2002
HAUSSER, Paul C.	--	Administrator	--	1953-91	1990
		Coach	Fencing	1954-88	
		Coach	Baseball	1953-72	
HUBEY, Ali	1972	Athlete	M-Soccer	1968-71	1990
HURTADO, Fabian	1975	Athlete	M-Soccer	1970-73	1987
KASBARIAN, Raymond P.	1966	Founder/Athlete	Judo	1962-66	1989
KETZNER, Robert Shelby	--	Coach	Rifle	1962-86	1987
KHOWAYLO, Alex	1969	Athlete	M-Soccer	1960-63	1996
LUBETKIN, Charles "Tudy"	1953	Athlete	M-Basketball/M-Track	1949-52	1994
LYNCH, Robert K.	1984	Athlete	M-Fencing	1977-80	1993
		Coach	M-Fencing	1986-91	
MacDONALD, Dan	1984	Athlete	Baseball	1981-84	1991
OLSEN, Richard J.	1969	Athlete	M-Basketball	1965-69	1988
OLSON, George R.	1977	Athlete	Baseball	1974-77	1987
ROGERS, Warren E.	1988	Athlete	M-Basketball	1983-87	1993
ROMULUS, Rudy	1991	Athlete	M-Volleyball	1988-91	1996
SARLO, Paul A.	1992	Athlete	Baseball	1989-91	2005
SCHMID, John "Gene"	--	Coach	Baseball	1973-97	2002
		Asst. Coach	Baseball	1968-72	
SIMON, J. Malcolm	--	Coach	M-Soccer	1955-83	1994
		Athletics Director	--	1983-94	
SKURLA, Peter J.	1941	Athlete	Bowling	1937-41	1992
SWANSON, Robert F.	--	Athletics Director	--	1947-82	1986
TOSATO, Lawrence P.	1956	Athlete	M-Basketball/Baseball	1952-56	1987
TUBELLO, Jeffrey	1976	Athlete	Rifle	1972-76	1988
VAN WRIGHT	1997	Athlete	W-Basketball	1991-96	2005
WALSH, John J.	1966	Athlete	MSoc/MBKB/Baseball	1962-66	1986
WASNIEWSKI, Frank	1980	Athlete	M-Tennis	1977-80	1990
WELGOS, Bob	1962	Athlete	M-Basketball/Bowling	1959-62	2005
WOROBEC, Myron S.	1966	Athlete	M-Soccer	1962-65	1994
YONEZUKA, Yoshisada	--	Founder/Coach	Judo	1962-??	1991
ZORN, Werner	1962	Athlete	M-Soccer	1958-61	1988
1960 Men's Soccer Team		NAIA co-national champion	1988		
1981-82 Men's Basketball Team		NJIT's first ECAC and IAC champion	1990		
1982 Baseball Team		NJIT's second ECAC and IAC champion	1993		





When NJIT reclassified its athletic programs to NCAA Division II from Division III in 1997, the Highlanders joined the New York Collegiate Athletic Conference (NYCAC). After three years of NYCAC play, the Highlanders began a new era in the fall of 2000 when they became members of the Central Atlantic Collegiate Conference (CACC).

For its first two seasons in the league, NJIT was the only CACC school with full NCAA membership. The others were in a period of transition while switching affiliation from the National Association of Intercollegiate Athletics (NAIA).

However, five other CACC members completed their provisional requirements in 2002, four more did so in 2003, and this year, Wilmington (Del.) College joined the NCAA fold in 2004. This season, Philadelphia University is in the conference. As a conference, the CACC was voted into active status by the NCAA membership committee in July 2004. Shortly thereafter, it was granted an automatic qualifier into the NCAA Championships in four sports, including men's and women's basketball.

The 2005-06 season will be the last one in the CACC for NJIT, as the Highlanders begin the process of reclassifying to NCAA Division I from Division II. This season, NJIT will play a full CACC regular season conference slate and individual student-athletes will be eligible for conference honors, as well. As a result of the reclassification, NJIT will not be part of postseason competition. Next season, NJIT will play a Division I schedule.

More information is available on the Internet at [www.caccathletics.org](http://www.caccathletics.org).

## 2005 CACC TOURNAMENT

### MARCH 2

- #1 Holy Family 84, #8 Post 52
- #2 Bloomfield 67, #7 Wilmington 64
- #3 USP 76, #6 Felician 67
- #4 NJIT 67, #5 Dominican 45

### MARCH 4

USP 78, Bloomfield 60  
Holy Family 84, NJIT 73

### MARCH 5

Holy Family 65, USP 59

### TOURNAMENT MVP

Kelly Killion, Holy Family

## 2004-05 STANDINGS

	CACC	Overall
Holy Family	21-1 .955	25-6 .806
Bloomfield	19-3 .864	21-9 .700
USP	17-5 .773	21-9 .700
NJIT	16-6 .727	18-12 .600
Dominican	12-10 .545	14-14 .500
Felician	11-11 .500	11-17 .393
Wilmington	10-12 .455	14-14 .500
Caldwell	8-14 .364	9-18 .333
Post	8-14 .364	8-20 .286
Goldey-Beacom	4-18 .182	5-22 .185
Georgian Court	3-19 .130	4-23 .148
Nyack	3-19 .136	3-24 .111

## ALL-CONFERENCE TEAM

### First Team

Guard	Jamie Battinieri	Sr	Holy Family
Guard	Shelby Rance	So	USP
Forward	Keir Dargon	Sr	Bloomfield
Forward	Lauren Meyer	Sr	Georgian Court
Forward	Leah Shumonski	Jr	USP

### Second Team

Guard	Kelly Crowe	So	NJIT
Guard	Andrea Jones	Jr	Wilmington
Guard	Kelly Killion	Fr	Holy Family
Forward	Alesha Clayton	Jr	Felician
Forward	Ashley Dunek	Sr	Holy Family

### Third Team

Guard	Domenica Raymond	Jr	Bloomfield
Forward	Toni Jones	So	Goldey Beacom
Forward	Tadj Williams	So	Post
Center	Nordia Henry	Fr	Wilmington
Center	Selena Kershaw	Jr	NJIT

**Player of the Year:** Jamie Battinieri, *Holy Family*

**Newcomers of the Year:** Marissa Franklin, *Bloomfield* and Kelly Killion, *Holy Family*

**Coach of the Year:** Mike McLaughlin, *Holy Family*

**Team Sportsmanship Award:** *Nyack*

## LEADERS

<b>Scoring</b>	<b>PPG</b>
Lauren Meyer, <i>Georgian Court</i> .....	24.1
<b>Rebounding</b>	<b>RPG</b>
Kim Rowley, <i>Goldey Beacom</i> .....	11.3
<b>Assists</b>	<b>APG</b>
Kelly Killion, <i>Holy Family</i> .....	5.94
<b>Blocks</b>	<b>BPG</b>
Ashley Rossi, <i>Dominican</i> .....	2.46
<b>Steals</b>	<b>SPG</b>
Leah Shumonski, <i>USP</i> .....	3.57
<b>FG Pct</b>	<b>PCT</b>
Danielle Norman, <i>Felician</i> .....	.545
<b>FT Pct</b>	<b>PCT</b>
Jennifer Plante, <i>Post</i> .....	.895
<b>3FG Pct</b>	<b>PCT</b>
Jamie Battinieri, <i>Holy Family</i> .....	.380
<b>3FG/GM</b>	<b>PCT</b>
Jamie Battinieri, <i>Holy Family</i> .....	2.52
<b>Assists/TO</b>	<b>PCT</b>
Kelly Killion, <i>Holy Family</i> .....	2.24





## **The NJIT 2005 Women's Basketball Team**

Back Row – Nicole Ballou, Kim Bowen Lusk, Katie Daumer, Ettie Ebewo, Emese Gyuricza,  
Selena Kershaw, Ali Baumlin, Denaya Hemingway, Siobhan Kilkenny

Front Row – Brittany Monio, Jill Dickinson, Jackie McCaffrey, Breanna Turnbull,  
Jessica Vogel, Erika Velez, Kelly Crowe, Aine O'Dwyer





Erika  
Velez  
Junior

Jackie  
McCaffrey  
Sophomore

## WOMEN'S BASKETBALL 2005-06 SCHEDULE

DATE	OPPONENT	TIME
Nov.22	KUTZTOWN	6 p.m.
Nov.29	CALDWELL*	6 p.m.
Dec.1	HOLY FAMILY*	6 p.m.
Dec.3	Goldey-Beacom*	1 p.m.
Dec.6	at Bloomfield*	6 p.m.
Dec.10	NYACK*	4 p.m.
Dec.12	at Georgian Court*	7 p.m.
South Padre Island Tournament		
Dec.28	Nebraska Kearney	5 p.m.
Dec.29	Consolation/Championship	5 or 7p.m.
Jan.7	at USP*	1 p.m.
Jan.10	WILMINGTON (DE)*	6 p.m.
Jan.12	at Philadelphia*	6 p.m.
Jan.17	FELICIAN*	6 p.m.
Jan.19	at Post*	6 p.m.
Jan.21	DOMINICAN (NY)*	1 p.m.
Jan.24	at Wilmington (DE)*	6 p.m.
Jan.26	BLOOMFIELD*	6 p.m.
Jan.28	GOLDEY-BEACOM*	1 p.m.
Jan.31	at Nyack*	6 p.m.
Feb.2	at USP*	6 p.m.
Feb.4	at Felician*	1 p.m.
Feb.7	at Dominican (NY)*	6 p.m.
Feb.11	PHILADELPHIA*	1 p.m.
Feb.14	at Holy Family*	6 p.m.
Feb.18	at Caldwell*	6 p.m.
Feb.21	GEORGIAN COURT*	6 p.m.
Feb.25	POST*	1 p.m.

\* Central Atlantic Collegiate Conference

Home Games (CAPS) at Fleisher Athletic Center

Head Coach: Kim Bowen Lusk (Southern Connecticut '99) 4th year

Assistant Coaches: Nicole Ballou & Siobhan Kilkenny

# NJIT

New Jersey Institute of Technology