

NEW JERSEY INSTITUTE OF TECHNOLOGY



2000-01 WOMEN'S BASKETBALL



NJIT FACTS

Location	University Heights, Newark, NJ 07102
Founded	1881
Enrollment	5,645 full-time undergraduate
Nickname	Highlanders
Colors	Red and White
President	Dr. Saul K. Fenster
Senior Administrator for Athletics	Lenny Kaplan
Director of Athletics	Dr. James Catalano
Athletic Department Phone	(973) 596-3636
Athletic Department URL	www.njit.edu/athletics
Head Women's Basketball Coach	Sharon Manning Beverly
Office Phone	(973) 596-3633
Best Time to Reach	M-F 10-1
Office FAX	(973) 596-8440
e-mail	beverly@adm.njit.edu
Assistant Coaches	Marie Patrick, Elijah Allen, Chantel Curry, Rich Snedaker
Office Phone	(973) 596-3635
Captains	Jackie O'Connor, Odelia Pyron
Managers	Chelise Gray, Khara Brown, Patricie Smith
Affiliations	NCAA II, ECAC
Conference	Central Atlantic Collegiate (1st year)
Home Arena (cap.)	Entwisle Gymnasium (1,500)
1999-2000 Record	11-16
Conference Record (finish)	10-12 (T-6th/12 in New York Collegiate Athletic)
Conference Tournament	Quarterfinals
Starters Returning/Lost	3/2
Letterwinners Returning/Lost	5/2
Coordinator of Sports Information Services	Mark Mentone
Office Phone	(973) 596-8324
Home Phone	(973) 743-2658
FAX	(973) 596-8440
e-mail	mentone@adm.njit.edu

TABLE OF CONTENTS

2000-01 Quick Facts	IFC
2000-01 Season Outlook	2
President Saul K. Fenster	3
Vice President Joel Bloom	3
Senior Administrator for Athletics Lenny Kaplan	3
Head Coach Sharon Manning Beverly	4
Assistant Coaches/Managers	5
2000-01 Roster	6
1999-2000 Statistics & Results	7
Player Profiles	8
Athletic Facilities	16
Athletics & Physical Education Staff	17
Opponent Information	18
CACC/NYCAC	20
About NJIT	IBC
2000-01 Schedule	OBC

MEDIA INFORMATION

This guide is designed to assist the media in their coverage of New Jersey Institute of Technology women's basketball. The NJIT sports information services department will provide an official NCAA box score 15 minutes after the conclusion of each home game, with play-by-play available upon request.

All requests for interviews with players and coaches must be made through the sports information office, (973) 596-8324. Following games, Coach Beverly and selected players will be available outside the lockerroom following a 10-minute cooling-off period. All visiting radio broadcast requests should be made at least two weeks in advance.

CREDITS

The 2000-01 NJIT Women's Basketball Guide is a production of the NJIT sports information services department, Mark Mentone, coordinator. Writing and design by Mark Mentone on Adobe PageMaker 6.5. Editorial assistance provided by Joe Caiola '80, Sharon Beverly, and Joe Harkins. Additional research by Nicole Ballou '03 and Jackie O'Connor '01. Photography by Mitch Rubin (PM Studios) and Steve Jordan. Aerial photography by Mike Peters. Printing by C&C Printshop, Inc., Bergenfield, N.J.

DIRECTIONS TO NJIT

Garden State Parkway: Take exit 145 to Route 280 East, then follow Route 280 East directions.

New Jersey Turnpike: Take exit 15W to Route 280 West, then follow Route 280 West directions.

Route 280 West: After drawbridge, take Exit 14B (Broad Street/King Blvd.). At bottom of exit ramp, make a left. Go one block to stop sign. Make a left on King Blvd. Go five lights to Warren Street. Make a right on Warren Street. Go two blocks to Colden Street. Make a left on Colden Street. Follow signs to NJIT Parking Deck.

Route 280 East: Take Exit 13 (First Street/Newark). At light, make a right on First Street. Go three lights to W. Market Street. Make the soft left on W. Market Street. Go four lights to King Blvd. Make a left on King Blvd. Go one light to Warren Street. Make a left on Warren Street. Go two blocks to Colden Street. Make a left on Colden Street. Follow signs to NJIT Parking Deck.

Route 1 & 9 North & South: Take exit marked Newark, Route 21 (McCarter Highway). Cross bridge. At light at end of bridge, make quick left then quick right for Broad Street. (There are clear signs for Broad Street) Go about 1 mile. Make a left on Court Street. Make a right at third light on King Blvd. Make a left at fifth light on Warren Street. Go two blocks to Colden Street. Make a left on Colden Street. Follow signs to NJIT Parking Deck.

Route 78: Take Route 78 to the Garden State Parkway. Follow GSP directions.

Route 22: Take Route 22 to Route 21 North. Follow directions for Route 21 North.

Route 21 North: Cross bridge. At light at end of bridge, make quick left then quick right for Broad Street. (There are clear signs for Broad Street.) Go about 1 mile. Make a left on Court Street. Make a right at third light on King Blvd. Make a left at fifth light on Warren Street. Go two blocks to Colden Street. Make a left on Colden Street. Follow signs to the NJIT Parking Deck.

Route 21 South: From 21 South, turn right on Bridge Street. Turn left on Broad Street. Go one block and turn right on Washington Place. Go one block and turn left on Halsey Street. Go one block and turn right on Central Avenue. Make the third left on King Blvd. At first light, turn right on Warren Street. Go two blocks to Colden Street. Make a left on Colden Street. Follow signs to NJIT Parking Deck.

New York Thruway: Thruway to Exit 14A, Garden State Parkway. Follow GSP directions above.

George Washington Bridge: NJ Turnpike South to Exit 15W. Follow Route 280 West directions above.

Lincoln Tunnel: West on Route 3 to NJ Turnpike South to Exit 15W. Follow Route 280 West directions above.

From Brooklyn, Queens and Long Island: Take Verrazano-Narrows Bridge (Interstate 278) and follow 278 across Staten Island. Cross Goethels Bridge. Follow signs to New Jersey Turnpike North then follow New Jersey Turnpike directions above.

ON THE COVER (l-r):

NJIT Head Coach Sharon Manning Beverly with 2000-01 seniors Melsha Winchester, Jackie O'Connor, and Odelia Pyron.

SEASON OUTLOOK

A third consecutive 11-win season will not be acceptable to New Jersey Institute of Technology women's basketball coach **Sharon Manning Beverly**.

The Highlanders graduated four starters from the 11-16 team of 1998-99, and had to learn a new system under first-year coach Beverly last season. So when they turned in the same 11-16 record, it was considered over-achieving. But improvement is expected this season.

"We're stronger this year," Beverly said. "We added quality players who are capable of helping us immediately. With the talent of the newcomers and the improvement of the returning players, we have our sights set on improving on the 11 wins."

After playing in the New York Collegiate Athletic Conference in their first three years of Division-II competition, the Highlanders have joined the Central Atlantic Collegiate Conference (CACC) for 2000-01. Five of the 12 CACC schools are in New Jersey, including NJIT, and three are within a half hour of Newark.

"We're excited about competing in the CACC," Beverly said, "primarily for the in-state rivalries. The conference is also very balanced, meaning just about everyone has a chance to win. Our expectations are to be in the mix at the end."

"We also have a strong nonconference schedule, including top teams in the Pennsylvania State Athletic and Sunshine State Conferences, as well as the NYCAC. We'll be challenged, especially early, but the hope is that we will then be prepared for conference play."

GUARDS

The road to a starting assignment in the Highlander backcourt will have to go through tri-captain **Jackie O'Connor** (9.8 ppg, 4.0 rpg, 3.0 apg in 1999-2000)

and sophomore **Nicole Ballou** (7.0 ppg, 2.7 apg). The duo got the bulk of the starts a year ago, and O'Connor is the leading returning scorer.

"Jackie's outside shot will be an integral part of our offense," Beverly said. "Nicole ran the point for us as a freshman, and we're expecting to see even more good things from her after a year of experience."

Tri-captain **Odelia Pyron** (5.0 ppg, 29 steals) is another experienced guard and an intense defender. Newark native **LaQuana Guy** will push Ballou at the point. A freshman, Guy brings great speed and scoring capabilities from Arts High. Newcomer **Lindsey Reggo** adds further depth.



NJIT must replace *Lauren Daley* (center), the NYCAC's leading rebounder.

POST PLAYERS

The Highlanders lost **Lauren Daley** (10.0 ppg, 10.5 rpg, 40 blocks), Division-II's 13th leading rebounder and the team MVP, to graduation. The elder stateswomen are now tri-captain **Melsha Winchester** (3.4 ppg, 2.5 rpg) and junior **Tenille Jordan** (5.0 ppg, 5.0 rpg).

"Melsha is making the transition from a pure post player to a swing player," Beverly said. "We'll use her at both forward spots. Tenille is much-improved over last year, and we hope to get more from her on the offensive end."

Freshman **Kate Duncan** could make an immediate impact. A Paramus Catholic product, she has been lauded by the coaching staff for her work ethic and grasp of fundamentals.

The most intriguing newcomer could be junior college transfer **Chevanese Samms**. After two years at nearby Essex County College, the 6-foot-3 Samms has excellent speed and jumping ability for her size.

Also vying for playing time will be junior **Aulina Presendieu** (1.5 ppg, 1.4 rpg) and freshman **Stephanie Patrikios** from Palisades Park High School

DR. SAUL K. FENSTER

President

Dr. Saul K. Fenster is the sixth president of New Jersey Institute of Technology. Prior to joining NJIT in 1978, he served in various faculty and administrative capacities at Fairleigh Dickinson University, including six years as provost of the Rutherford campus.



Dr. Fenster is a mechanical engineer. He earned a bachelor's degree from the City College of New York, a master's degree from Columbia University and a Ph.D. from the University of Michigan. He has authored and co-authored two textbooks and numerous research papers and technical articles. His industrial experience includes a period as senior research engineer with the Sperry Rand Corporation and as a partner in an industrial consulting firm.

Dr. Fenster has served on many statewide task forces, commissions and committees. Currently, he is a board member of Prosperity New Jersey; the New Jersey Commission on Science and Technology; Research and Development Council of New Jersey, which he Chairs; the New Jersey State Chamber of Commerce; the New Jersey Alliance for Action; the New Jersey Association of Colleges and Universities; the National Action Council for Minorities in Engineering; and the Liberty Science Center.

DR. JOEL BLOOM

Vice President, Academic and Student Services

Dr. Joel Bloom has worked at NJIT since July 1990, and is currently vice president for academic and student services. Among his student services responsibilities is overseeing the department of athletics and physical education.



Dr. Bloom also serves as the dean of the Albert Dorman Honors College, which enrolls 460 students who come from 15 states and several foreign countries and have an average SAT score of 1322.

Prior to NJIT, Dr. Bloom spent seven years as assistant commissioner in the New Jersey Department of Education for the division of general academic education. He currently chairs the State College Advisory Board and the Newark Consortium Board for Pre-College Education.

Dr. Bloom earned bachelor's and master's degrees from Hunter College, and holds a master's and doctorate from Columbia University Teachers College.

LENNY KAPLAN

Senior Administrator, Athletics, Physical Education, Recreation and Intramurals

After serving 11 years in the athletic department at Division-I Manhattan College, **Lenny Kaplan** was appointed in August of 2000 to NJIT's newly-created position of senior administrator for athletics, physical education, recreation and intramurals.



Kaplan is a 1988 graduate of St. John's University with a degree in athletic administration. After three years as Manhattan's director of operations, he spent the last eight as an assistant athletic director. At NJIT, he reports to Dr. Joel Bloom, vice president for academic and student services.

Kaplan, a native of Commack, Long Island, attended Commack High School South. He resides in Manhattan with his wife, Nancy, and their sons, Michael and Joshua.

SHARON MANNING BEVERLY

Head Coach

Sharon Manning Beverly is in just her second season as women's basketball coach at New Jersey Institute of Technology, but she is no stranger to the sidelines of the New York metropolitan area. Beverly, who guided the Highlanders to an 11-16 record last year, will begin her 20th season as a collegiate head coach when the 2000-01 campaign tips off.

Beverly is the all-time winningest women's basketball coach at Division-I Fairleigh Dickinson University in Teaneck, N.J. Her 11-year stint with the Knights included Northeast Conference (NEC) championships in 1990 and 1992 and a regular-season NEC title in 1993. The 1989-90 season was capped by her selection as New Jersey State Division 2 Coach of the Year.



Coach Beverly (center) with 2000-01 assistants Elijah Allen and Marie Patrick.

The 1991-92 FDU squad finished 23-6 overall, setting a school record for victories. The following season, the Knights went 15-12 and tied for the NEC regular-season title with a 14-4 conference mark. At season's end, Beverly was selected NEC Coach of the Year.

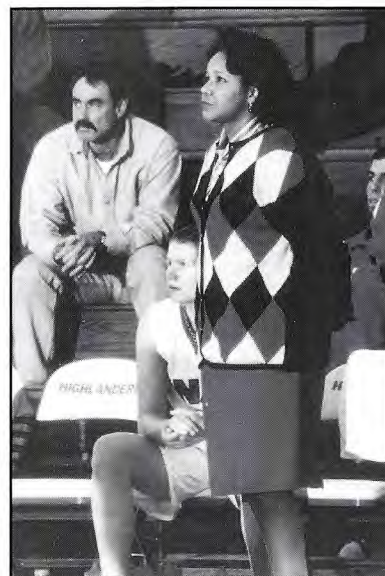
Beverly, who has bachelor's and master's degrees from Queens College, secured her first head coaching position at Molloy College in 1981 following two years as an assistant at her alma mater. After one season at Molloy, she returned to Queens as the head coach, and highlighted a six-year stay with 16-13 record and an Eastern College Athletic Conference Division-I Tournament berth in 1987-88.

Beverly's collegiate playing career began at Queensborough Community College (QCC), where she was selected as a junior college all-star. QCC won regional junior college championships and qualified for the national tournament in both of her seasons. At Queens, her two teams finished seventh and ninth in the nation while competing in the Association for Intercollegiate Athletics for Women national tournament.

Following graduation, Beverly played professionally in Europe. She led her French team in points, rebounds and assists for two consecutive seasons.

In 1991, Beverly was selected as a "Premier Inductee" into the athletic hall of fame at Christ the King High School in New York City. She was an assistant coach for the 1994 U.S. Olympic Festival North Team, and served three years on the NCAA Division-I regional championship selection committee.

Beverly's husband, Randy Beverly, is a former defensive back for the New York Jets and was a major part of the Super Bowl III championship team of 1968. They have one son, Preston.



MARIE PATRICK

Assistant Coach

Marie Patrick comes to NJIT directly from a successful playing career at Fairleigh Dickinson University (FDU). In 1999-2000, she was the Division-I Knights' captain and team most valuable player, and earned first-team all-Northeast Conference honors. She went on to be named FDU's outstanding female athlete.



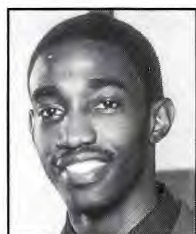
As a junior at FDU, Patrick played for current NJIT head coach Sharon Beverly. Prior to that, she became the all-time leading scorer and rebounder at Salem Community College (SCC), and was named a second-team junior college all-American as a sophomore.

Patrick, a Salem High School graduate, received an associate's degree in personnel management from SCC in 1998 and a bachelor of science in business management in 2000 from FDU.

ELIJAH ALLEN

Assistant Coach

Elijah Allen, a 1998 graduate of Fairleigh Dickinson University, enters his first season as a collegiate coach.



A Newark native, Allen graduated from St. Benedict's Prep in 1993. After earning first-team all-NEC honors as a senior at FDU, he was a first-round draft choice of the New Jersey Shorecats of the United States Basketball League. Allen has played professionally in France.

In his final collegiate game, Allen scored 43 points in a first-round NCAA tournament matchup against the University of Connecticut on March 12, 1998. FDU lost to the No. 2-seeded Huskies, 93-85.

Allen is currently a loan officer for A&E Mortgage Company in Roselle, N.J., and resides in Newark.

CHANTEL CURRY

Volunteer Assistant

Chantel Curry completes the Fairleigh Dickinson connection on the NJIT staff. Curry played four years for Coach Sharon Beverly at FDU before graduating in 1988. She joined Beverly's NJIT staff last season.

Curry averaged 11.4 points and 5.1 assists during her four-year college career. In 1997-98, she was the team MVP for both the Knights' basketball and track & field squads. She is a member of the athletic hall of fame at Greece Athena High School, in Rochester, N.Y.

RICH SNEDAKER JR.

Strength & Conditioning

Rich Snedaker brings his 17 years of experience in the field of exercise science to the Highlanders. He was also the strength and conditioning coach for some of Coach Sharon Beverly's teams at Fairleigh Dickinson.

Snedaker is a former strength and conditioning coach for the New Jersey Nets under head coach Chuck Daly, and is the personal trainer for former Net Jayson Williams. He has also been the director of conditioning and technique for several U.S. Olympic bobsled teams. Snedaker owns and operates Sports Conditioning Specialists in Briarcliff Manor, N.Y.

KHARA BROWN

CHELISE GRAY

Managers

NJIT freshmen Khara Brown and Chelise Gray are in their first year as women's basketball managers.



Brown, 18, is a 2000 graduate of John P. Stevens High School in Edison, N.J. Gray, 17, was a manager for Coach Mark Scarano at Woodbridge High School. Both are majoring in chemical engineering.



Back Row (L-R): Elijah Allen, Marie Patrick, Stephanie Patrikios, Tennille Jordan, Chevanese Samms, Kate Duncan, Melsha Winchester, Sharon Beverly.

Front Row (L-R): Aulina Presendieu, Jackie O'Connor, Laquana Guy, Nicole Ballou, Odelia Pyron, Lindsey Reggo.

NEW JERSEY INSTITUTE OF TECHNOLOGY 2000-01 WOMEN'S BASKETBALL ROSTER

No.	Name	Yr.	Pos.	Ht.	Hometown/High School (College)
5	Stephanie Patrikios	Fr.	F	5-10	Ridgefield, NJ/Palisades Park
12	Laquana Guy	Fr.	G	5-3	Newark, NJ/Arts
13	Nicole Ballou	So.	G	5-3	Staten Island, NY/Notre Dame
15	Chevanese Samms	Jr.	C	6-3	St. Catherine, Jamaica/St. Catherine (Essex CC)
20	Aulina Presendieu	Jr.	F	5-9	East Orange, NJ/East Orange
22	Jackie O'Connor	Sr.	G	5-7	Riverdale, NJ/Pompton Lakes
23	Odelia Pyron	Sr.	G	5-4	Passaic, NJ/Passaic
24	Lindsey Reggo	Fr.	G	5-7	Ridgefield, NJ/Ridgefield Memorial
32	Melsha Winchester	Sr.	G/F	5-10	North Bergen, NJ/North Bergen
33	Kate Duncan	Fr.	F	6-0	Highlands Ranch, CO/Paramus Catholic [NJ]
42	Tennille Jordan	Jr.	F	6-0	Hackensack, NJ/New Milford

Head Coach: Sharon Manning Beverly (Queens-N.Y.), 2nd year

Assistant Coaches: Marie Patrick, Elijah Allen, Chantel Curry

Strength & Conditioning Coach: Rich Snedaker

Captains: Jackie O'Connor '01, Odelia Pyron '01

Managers: Chelise Gray, Khara Brown, Patricie Smith

1999-2000 STATISTICS & RESULTS (11-16)

NAME	GP	FG-FGA	%	3FG-A	%	FT-FTA	%	Reb-Avg	Pts-Avg	A-Blk-Stl
Veronica Mullen	27	143-368	.389	23-43	.535	57-102	.559	117- 4.3	366-13.6	74-2-49
Lauren Daley	27	100-262	.382	0-3	.000	71-113	.628	284-10.5	271-10.0	36-49-20
Jackie O'Connor	27	91-254	.358	58-173	.335	25-37	.676	109-4.0	265-9.8	81-1-39
Lauren Tudor	27	76-178	.427	0-4	.000	39-60	.650	162-6.0	191-7.1	32-7-20
Nicole Ballou	27	60-176	.341	36-97	.371	34-50	.680	56-2.1	190-7.0	73-2-36
Tennille Jordan	27	54-127	.425	0-0	---	28-55	.509	134-5.0	136-5.0	10-4-26
Odelia Pyron	27	33-154	.214	6-34	.176	62-93	.667	67-2.5	134-5.0	25-2-29
Melsha Winchester	26	31-96	.323	15-39	.385	10-15	.667	64-2.5	87-3.4	20-0-15
Aulina Presendieu	17	7-24	.292	1-1	1.000	10-19	.526	23-1.4	25-1.5	2-0-3

11/20 at College of N.J.	L	53-77	1/22 NEW YORK TECH*	W	77-51
11/21 vs. Lehman	W	74-56	1/26 at Philadelphia*	L	52-81
11/23 ST. PAUL'S (OT)	L	62-66	1/29 QUEENS-N.Y.*	W	64-54
12/1 ADELPHI*	L	75-58	2/2 SOUTHAMPTON*	L	58-80
12/4 at New York Tech*	W	74-61	2/5 at Molloy*	W	72-70
12/8 PHILADELPHIA*	L	69-78	2/9 MERCY*	L	52-64
12/11 at Queens-N.Y.*	W	72-59	2/12 at Dowling*	W	72-52
12/19 ST. ROSE*	L	51-87	2/16 C.W. POST	W	64-51
1/5 MOLLOY*	L	61-68	2/18 ST. AUGUSTINE	L	56-58
1/8 at Mercy*	L	46-77	2/20 at Concordia-N.Y.*	W	72-65
1/12 DOWLING*	W	57-49	2/23 at Southampton*	L	53-79
1/15 at C.W. Post*	L	64-75	2/26 at St. Rose*	L	42-94
1/17 CONCORDIA-N.Y.*	W	85-59	2/29 at Philadelphia+	L	65-80
1/19 at Adelphi*	L	56-78	* NYCAC + NYCAC Tournament		

22

JACKIE O'CONNOR**Senior/Co-Captain****5-7 Guard****Riverdale, NJ****Pompton Lakes HS**

Jackie A. O'Connor... second-year co-captain and fourth-year starter at shooting guard... Highlanders' leading returning scorer... has 770 career points and 154 career three-point field goals.

1999-2000: Played in all 27 games... averaged 9.8 points, 4.0 rebounds and 3.0 assists... led NJIT in assists (81) and three-pointers (58).

1998-99: Second on team with 11.5 points per game in 26 contests... also averaged 2.5 rebounds, 1.8 assists, and 1.2 steals... canned team-high 56 three-pointers... shot .703 from the free-throw line.

1997-98: Started as freshman... led team with 40 threes... posted 7.8 points and 3.3 rebounds per game.

Prior to NJIT: Team MVP, all-league and all-county for Coach Robert Olive at Pompton Lakes High... played on a county champion and a Division II state champion... played AAU basketball for coach George Lapp.

Personal: Daughter of John & Kathy O'Connor... business management major with 3.0 GPA... minor in marketing... dean's list student... born 7/15/79 in Pompton Plains, N.J.

Coach Beverly on O'Connor: "Jackie brings the most experience to the floor for us. We will look to her this season to lead us."

Year	GP	FG-FGA	%	3FG-A	%	FT-FTA	%	Reb-Avg	Pts-Avg	A-Blk-Stl
1997-98	26	65-235	.277	40-156	.256	35-53	.673	86-3.3	205-7.8	61-0-42
1998-99	26	96-258	.372	56-161	.348	52-74	.703	66-2.5	300-11.5	48-1-32
1999-2000	27	91-254	.358	58-173	.335	25-37	.676	109-4.0	265-9.8	81-1-39
Total	79	252-747	.337	154-490	.314	112-164	.683	261-3.3	770-9.7	190-2-113

23

ODELIA PYRON

Senior/Co-Captain

5-4 Guard

Passaic, NJ

Passaic HS



Odelia Pyron... co-captain... fourth-year player can fill-in at either guard spot... has played in all 80 of her team's games in her career.

1999-2000: Played in all 27 games... had career highs of 5.0 points, 2.5 rebounds, and 1.1 steals per game.

1998-99: Appeared in every game... averaged 2.6 points and 1.7 rebounds.

1997-98: Contributed 3.3 points and 2.3 rebounds per game in 26 contests as a freshman.

Prior to NJIT: Team MVP and coach's award winner for Coach George Illenye at Passaic High... second-team all-league and all-area as a senior... also lettered in track as sprinter and triple-jumper.

Personal: Daughter of Gerald Pyron and Judith Simmons... majoring in marketing management with 3.7 GPA... enrolled in NJIT's Albert Dorman Honors College... dean's list student... listed in Who's Who Among American Colleges & Universities... three-time NJIT scholar-athlete award winner... born 4/2/79 in Passaic, N.J.

Coach Beverly on Pyron: "Odie's genuine desire to win will be an invaluable asset for us."

Year	GP	FG-FGA	%	3FG-A	%	FT-FTA	%	Reb-Avg	Pts-Avg	A-Blk-Stl
1997-98	26	33-119	.277	6-31	.194	15-35	.429	61-2.3	87-3.3	18-1-19
1998-99	27	27-86	.314	2-10	.200	15-29	.517	45-1.7	71-2.6	21-1-13
1999-2000	27	33-154	.214	6-34	.176	62-93	.667	67-2.5	134-5.0	25-2-29
Total	80	93-359	.259	14-75	.187	92-157	.586	173-2.2	292-3.7	64-4-61

32**MELSHA WINCHESTER****Senior****5-10 Guard/Forward****North Bergen, NJ****North Bergen HS**

Melsha Nicole Winchester... fourth year Highlander making transition from post to swing player.

1999-2000: Played in 26 games... averaged 3.4 points and 2.5 rebounds... canned 15 three-pointers after only two attempts in her first two years.

1998-99: Was limited by injury to 13 games.

1997-98: Posted 1.9 points and 1.5 rebounds per game in 26 contests.

Prior to NJIT: Coach's award and scholar-athlete award winner for Coach Daniel Beardon at North Bergen High... teams won three straight Secaucus Christmas Tournaments... was all-county in volleyball.

Personal: Daughter of Betty Winchester... management major with 3.6 GPA... dean's list student and NJIT scholar-athlete award winner... selected Ms. NJIT... former team MVP for Highlander volleyball team... born 3/2/79 in Brooklyn, N.Y.

Coach Beverly on Winchester: "Melsha can get in a 'zone' and kill a team from long range. We'll need her to be consistent."

Year	GP	FG-FGA	%	3FG-A	%	FT-FTA	%	Reb-Avg	Pts-Avg	A-Blk-Stl
1997-98	26	22-70	.314	0-1	.000	6-23	.261	39-1.5	50-1.9	14-3-11
1998-99	13	1-5	.200	0-1	.000	1-3	.333	10-0.8	3-0.2	2-0-1
1999-2000	26	31-96	.323	15-39	.385	10-15	.667	64-2.5	87-3.4	20-0-15
Total	65	54-171	.316	15-41	.366	17-41	.415	113-1.7	140-2.2	36-3-27

42

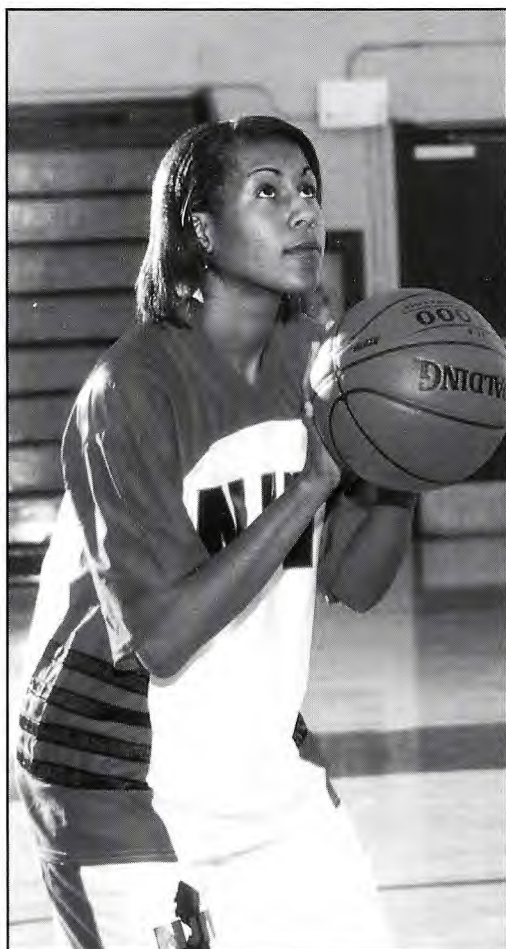
TENNILLE JORDAN

Junior

6-0 Forward

Hackensack, NJ

New Milford HS



Tennille Yolanda Jordan... third-year Highlander should stabilize power forward position.

1999-2000: Played in all 27 games... averaged 5.0 points, 5.0 rebounds and 1.0 steals.

1998-99: Posted 2.3 points and 2.8 rebounds per game in 26 contests.

Prior to NJIT: All-league performer for Coach David Wilson at New Milford High... also participated in volleyball and outdoor track.

Personal: Daughter of Audrey Jordan... majoring in professional & technical communications... NJIT scholar-athlete award winner... born 12/4/79 in Paterson, N.J.

Coach Beverly on Jordan: "Tennille is our most experienced post player. We hope to capitalize on her speed & quickness. She's also a great kid!"

Year	GP	FG-FGA	%	3FG-A	%	FT-FTA	%	Reb-Avg	Pts-Avg	A-Blk-Stl
1998-99	26	24-53	.453	0-0	---	11-21	.524	72-2.8	59-2.3	4-5-7
1999-2000	27	54-127	.425	0-0	---	28-55	.509	134-5.0	136-5.0	10-4-26
Total	53	78-180	.433	0-0	---	39-76	.513	206-3.9	195-3.7	14-9-33

13**NICOLE BALLOU****Sophomore****5-3 Guard****Staten Island, NY****Notre Dame HS**

Nicole Christine Ballou... incumbent and second-year starter at point guard.

1999-2000: Played in all 27 games... accumulated 7.0 points, 2.1 rebounds and 2.6 assists per game... added 39 steals... led team in free-throw percentage (.680)... nailed 36 three-point field goals.

Prior to NJIT: Team MVP, most dedicated, and sportsmanship award winner for Coaches Maureen & John Hannafin... was also team MVP in softball... played for the AAU Staten Island Gators and Coach Jim Lasowski.

Personal: Daughter of West and Debbie Ballou... has an eight-year old sister, Stacie, and two-year-old brother, Andrew.. management major with 3.0 GPA... dean's list student... born 4/22/81 in Staten Island, N.Y.

Coach Beverly on Ballou: "Nicole is developing into a great floor leader. She possesses a deadly outside shot."

Year	GP	FG-FGA	%	3FG-A	%	FT-FTA	%	Reb-Avg	Pts-Avg	A-Blk-Stl
1999-2000	27	60-176	.341	36-97	.371	34-50	.680	56-2.1	190-7.0	73-2-36

AULINA PRESENDIEU

Junior 5-9 Forward
East Orange, NJ/East Orange HS

20


Aulina Presendieu... third-year player gives Coach Beverly frontcourt options.

1999-2000: Appeared in 17 games... averaged 1.5 points and 1.4 rebounds... made her only three-point attempt.

1998-99: Posted 1.7 points and 2.7 rebounds per game in 25 contests... blocked four shots.

Prior to NJIT: Played for Coach Alem Hasam at East Orange High... Essex County scholar-athlete award winner... also captained the volleyball and track & field teams.

Personal: Majoring in industrial engineering with 3.0 GPA... born 1/1/80.

Coach Beverly on Presendieu: "Aulina is an extremely hard worker, especially in practice."

Year	GP	FG-FGA	%	3FG-A	%	FT-FTA	%	Reb-Avg	Pts-Avg	A-Blk-Stl
1998-99	25	13-38	.342	0-1	.000	17-27	.630	67-2.7	43-1.7	6-4-6
1999-2000	17	7-24	.292	1-1	1.000	10-19	.526	23-1.4	25-1.5	2-0-3
Total	42	20-62	.323	1-2	.500	27-46	.587	90-2.1	68-1.6	8-4-9


15

CHEVANESE SAMMS

Junior 6-3 Center
St. Catherine, Jamaica/St. Catherine HS

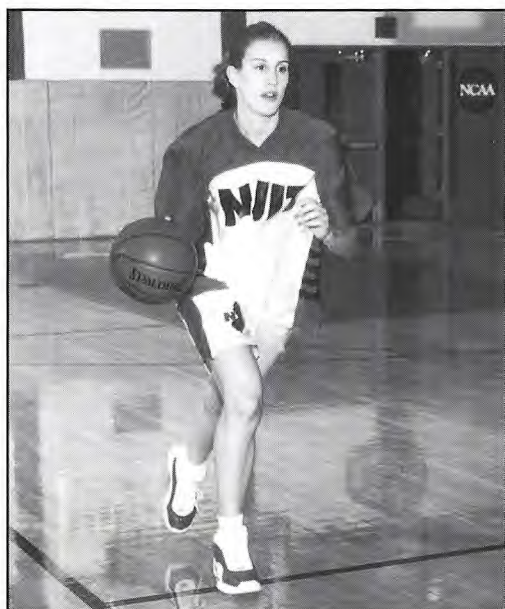
Chevanese LaToya Samms... transfer from Essex County College... potentially dominant post player with good athletic ability for her size.

Prior to NJIT: Played two years for Coach Melvin Knight at Essex CC... also played soccer... played basketball, soccer and netball at St. Catherine High.

Personal: Daughter of Ornell and Gloria Samms... management major with 3.61 GPA... received an honors scholarship to NJIT... national dean's list student and USGA student scholar at ECC... born 5/5/75 in St. Thomas, Jamaica.

Coach Beverly on Samms: "Chev is a very athletic player. She possesses all the tools to develop into an inside force."



KATE DUNCAN**Freshman 6-0 Forward****Highlands Ranch, CO/Paramus Cath. (NJ)****33**

Katherine Danae' Duncan... could make immediate impact at either forward spot.

Prior to NJIT: Played for Coach Al Roth at Paramus Catholic... NJIT scholar-athlete award winner... won coach's award in both basketball and soccer.

Personal: Undeclared major... youngest of three children of Dee and Jean Ann Duncan... family moved to Colorado from northern New Jersey over the summer... born 3/22/82 in Ridgewood, N.J.

Coach Beverly on Duncan: "Kate comes from a great high school program. She is fundamentally sound and is a great asset to our program."

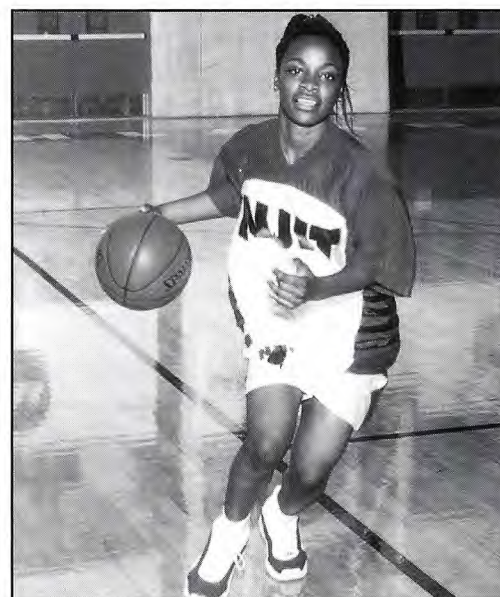
**12****LAQUANA GUY****Freshman 5-3 Guard****Newark, NJ/Arts HS**

Laquana T. Guy... born and raised in Newark... pure point guard will challenge incumbent Nicole Ballou for playing time.

Prior to NJIT: Team MVP, most improved and most dedicated for Coach Brad Moward at Arts High... MVP of Essex County Christmas Tournament... also played volleyball and softball... played for Moward on Lady Panthers AAU team.

Personal: Daughter of Janice Guy... majoring in professional and technical communications... all-American scholar, Edward Blousten scholar and excellence in chemistry and computers award winner... born 3/17/82 in Newark, N.J.

Coach Beverly on Guy: "Quana is fast and quick, a great combination. We will work to strengthen her fundamentals."



STEPHANIE PATRIKIOS

Freshman 5-10 Forward

Ridgefield, NJ/Palisades Park HS

5



Stephanie Patrikios... another talented frontcourt candidate.

Prior to NJIT: All-league performer for Coach Mark Cieslak at Palisades Park High... won team MVP, most improved, most intense, offensive, and defensive awards over the course of her secondary career... also ran cross-country

Personal: Daughter of George and Popi Patrikios... undeclared major... born 2/27/82 in Englewood, N.J.

Coach Beverly on Patrikios: "Steph gives us 100 percent effort all the time. She will develop into a strong post player."



24

LINDSEY REGGO

Freshman 5-7 Guard

Ridgefield, NJ/Ridgefield Mem. HS

Lindsey Elizabeth Reggo... among Coach Beverly's bigger guard options.

Prior to NJIT: All-league and all-county for Coach Robert Kahn at Ridgefield Memorial High... set school career scoring record with 1,756 points... also all-league in cross-country and track... won a state cross-country title.

Personal: Daughter of George and Mary Reggo... history major... born 6/23/82 in Englewood, N.J.

Coach Beverly on Reggo: "A perfectionist! Lindsey always wants to get it right. She'll be a great player someday."



ATHLETIC FACILITIES

The NJIT men's and women's basketball teams play their home games at Entwisle Gymnasium, the main facility in the Fleisher Athletic Center.



Entwisle, with seating for approximately 1,500 spectators, is also home to the Highlanders' men's and women's volleyball teams. The back bay, "C gym," area can be sectioned off from the main floor, making the entire gymnasium area useful for intramural

events, physical education classes, and campus recreation time, and able to host multiple events simultaneously.

The basketball teams also have access to all of the other facilities in the athletic center. These include the fitness area (containing computer controlled biking equipment, Cybex resistance units, and an indoor track), weight room, four racquetball courts (which can be converted for squash), a martial arts center, and an aerobics/dance studio. A six-lane swimming pool is home to NJIT's men's and women's swimming teams, while the two varsity tennis squads host meets and hold practices at four lighted outdoor hardcourt tennis courts behind the building.

The NJIT baseball and men's and women's soccer teams play and practice at Lubetkin Field, a lighted, natural-grass facility on campus grounds immediately adjacent to the Fleisher Center. Lubetkin, which is also used for physical education and intramurals, contains a midfield scoreboard and pressbox facilities, with seating to hold approximately 1,000 spectators.



NJIT also offers several club sports, including bowling, cricket, golf, judo, men's lacrosse and wrestling. The Hazell Student Center houses six regulation bowling lanes.

Physical education offerings include aerobics, archery, bowling, dance, fencing, golf, karate, learn to swim, skiing, strength training and conditioning, volleyball and water safety.

www.njit.edu/athletics

*Under the coordination of NJIT graduate student and athletic webmaster **Amit Desai**, the Highlanders web page has been relaunched. NJIT sports news, results, and schedules are now available at by logging onto <http://www.njit.edu/athletics>.*

*The page is supervised by **Ray Hayling**, Manager of Internet Services, and **Mark Mentone**, Coordinator of Sports Information Services. Assisting Desai with page maintenance are students **Pawan Murthy**, and **Amit Shah**.*

Currently available at the site are rosters and schedules of all 13 NJIT varsity intercollegiate sports, the latest department press releases and weekly notebooks, and an update of upcoming home events. Future plans include biographies of coaches and selected athletes, the NJIT athletic hall of fame, and pictures from recent events.

For Highlander sports news via e-mail, contact Mark Mentone at mentone@adm.njit.edu.

2000-01 ATHLETICS & PHYSICAL EDUCATION STAFF

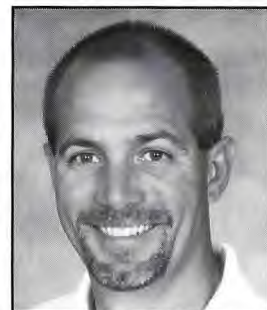
Carla Bandeira
Fencing Coordinator



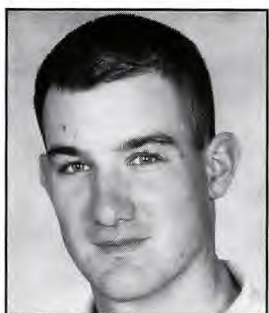
Sharon Beverly
Head Women's Basketball
Asst. AD/SWA



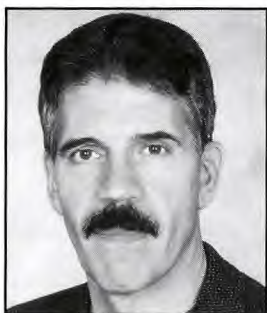
Amy Brander
Asst. Director of Athletics/
Compliance



Joe Caiola
Asst. Director of Athletics/
Business & Facilities



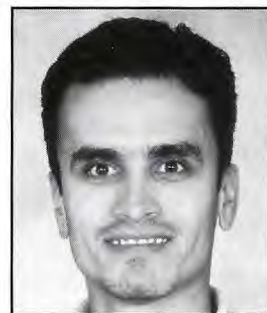
Brian Callahan
Head Baseball



Dr. James Catalano
Head Men's Basketball
Director of Athletics



Vinnie Ann Costanza
Department Secretary



Manny Del Rio
Head Men's Volleyball
Head Women's Volleyball



Duane Felczak
Phys. Ed. Specialist



Ricky Hill
Head Men's Soccer



Lenny Kaplan
Senior Administrator for
Athletics & Phys. Ed.



Shelly Licorish
Head Men's Tennis
Head Women's Tennis



Mark Mentone
Sports Information Coord.



Roger Olean
Athletic Trainer



Tom Romano
Head Women's Soccer
Head M/W Swimming
Intramural Director



John Walker
Front Desk Attendant
Equipment Specialist

2000-01 OPPONENT INFORMATION

Dominican College

Nov. 21, 6 p.m., at Entwisle Gym
Jan. 17, 6 p.m., at Orangeburg, N.Y.



Location: Orangeburg, NY
Founded: 1952
Enrollment: 1,900
Nickname: Lady Chargers
URL: www.dc.edu
Conference: Central Atlantic
Arena: Hennessy Center
Colors: Black, White, Red
President: Sr. Mary Eileen O'Brien
AD: Joseph Clinton
Last Year: 19-12

Head Coach: Steve Baxter
Office Phone: (845) 398-3008
E-Mail: N/A
Overall Record:
Associate Coach: John Burke
Assistant Coach: Laura Cannon
WBKB SID: Laura Cannon
Phone: (845) 398-3008
FAX: (845) 398-3042
E-Mail: laura.cannon@dc.edu

LIU-Southampton

Dec. 4, 7 p.m., at Entwisle Gym



Location: Southampton, NY
Founded: 1963
Enrollment: 1,300
Nickname: Colonials
URL: www.southampton.liu.edu
Conference: New York
Arena:
Colors: Blue and Gold
Chancellor: Robert F.X. Sillerman
AD: Mary Topping
Last Year:

Head Coach: Jim Meyer
Office Phone:
E-Mail: Coach_Meyer@yahoo.com
Overall Record:
Assistants: Ken Moyers
WBKB SID: Darren Johnson
Phone: (631) 287-8360
FAX: (631) 287-8188
E-Mail: djohnson@southampton.liu.edu

Kutztown University

Nov. 27, 7 p.m., at Entwisle Gym



Location: Kutztown, PA
Founded: 1866
Enrollment: 7,800
Nickname: Golden Bears
URL: www.kutztown.edu
Conference: Pennsylvania State
Arena: Keystone Hall
Colors: Maroon and Gold
President: Dr. David McFarland
AD: Clark Yeager
Last Year: 21-6

Head Coach: Janet Malouf
Office Phone: (610) 683-4667
Overall Record: 108-56 (6)
Assistants: Steve Hahn, Angie Holland
WBKB SID: Josh Leiboff
Phone: (610) 683-4182
FAX: (610) 683-4676
E-Mail: leiboff@kutztown.edu
Hotline: (610) 683-4676

Nyack College

Dec. 6, 6 p.m., at Nyack, N.Y.
Feb. 7, 6 p.m., at Entwisle Gym



Location: Nyack, NY
Founded: 1882
Enrollment: 1,000
Nickname: Purple Pride
URL: www.nyackcollege.edu
Conference: Central Atlantic
Arena: Bowman Gymnasium
Colors: Purple and Gold
President: Dr. David E. Schroeder
AD: Keith Davie
Last Year: 9-19

Head Coach: Drew Brauer
Office Phone: (845) 358-1710 x591
E-Mail: brauera@nyack.edu
Overall Record: 33-32 (3)
Assistants: Andre Johnson, Rashidi Aikens
WBKB SID: Drew Brauer
Phone: (845) 358-1710 x591
FAX: (845) 348-1039
E-Mail: brauera@nyack.edu

Goldey Beacom College

Nov. 29, 6 p.m., at Wilmington, Del.
Feb. 3, 1 p.m., at Entwisle Gym



Location: Wilmington, DE
Founded: 1896
Enrollment: 2,000
Nickname: Lightning
URL: goldey.gbc.edu
Conference: Central Atlantic
Arena: MBNA America Hall
Colors: Blue and Gold
President: Mohammad Ilyas
AD: Chris Morgan
Last Year: 1st year of program

Head Coach: Frank Aiello
Office Phone: (302) 225-6334
E-Mail:
Overall Record: First year
Assistants: Brandon Baffone, Mary Malone, Dan Oldham
WBKB SID: Chris Morgan
Phone: (302) 225-6330
FAX: (302) 998-6823
E-Mail: morganc@gbc.edu

Wilmington College

Dec. 9, 1 p.m., at New Castle, Del.
Feb. 14, 6 p.m., at Entwisle Gym



Location: New Castle, DE
Founded: 1968
Enrollment: 6,300
Nickname: Wildcats
URL: www.wilmcoll.edu
Conference: Central Atlantic
Arena: Pratt Gymnasium
Colors: Hunter Green and White
President: Dr. Audrey Doberstein
AD: Bud Livingston
Last Year: 13-15

Head Coach: David Brooker
Office Phone: (302) 328-9435
E-Mail:
Overall Record: First year
Assistants: Ron Handy
WBKB SID: Steve Lenderman
Phone: (302) 328-9435
FAX: (302) 328-8045
E-Mail: volleyball@wilmcoll.edu

University of The Sciences

Dec. 2, 1 p.m., at Philadelphia, Pa.
Jan. 27, 1 p.m., at Entwisle Gym



Location: Philadelphia, PA
Founded: 1822
Enrollment: 1,956
Nickname: Devils
URL: www.usip.edu
Conference: Central Atlantic
Arena: Rosenberger Alumni Hall
Colors: Cardinal and Silver
President: Dr. Philip Gerbino
AD: Robert C. Morgan
Last Year: 17-12

Head Coach: Andy McGovern
Office Phone: (215) 596-8782
E-Mail:
Overall Record: 62-56 (4)
Assistants: Bob Heller, Kevin Cain
WBKB SID: Bob Heller
Phone: (215) 895-3133
FAX: (215) 596-8762
E-Mail: r.heller@usip.edu

Holy Family College

Dec. 15, 6 p.m., at Entwisle Gym
Feb. 17, 6 p.m., at Philadelphia, Pa.



Location: Philadelphia, PA
Founded: 1954
Enrollment: 2,200
Nickname: Tigers
URL: www.hfc.edu
Conference: Central Atlantic
Arena: College Center
Colors: Blue and White
President: Sr. Francesca Olney
AD: Sandra Michael
Last Year: 33-5

Head Coach: Mike McLaughlin
Office Phone: (215) 637-7700 x3367
E-Mail: LadyTigerHoops@aol.com
Overall Record: 115-24 (4)
Assistants: Mark Morrow, Mike Moran, Bernadette Dickson
WBKB SID: Dan Williams
Phone: (215) 637-2603
FAX: (215) 637-6675
E-Mail: athletics@hfc.edu

Bloomfield College

Dec. 19, 5:30 p.m., at Entwisle Gym
Jan. 20, 1 p.m., at Bloomfield, N.J.



Location: Bloomfield, NJ
Founded: 1868
Enrollment: 2,000
Nickname: Deacons
URL: www.bloomfield.edu
Conference: Central Atlantic
Arena: Bloomfield College Gym
Colors: Red and Gold
President: Dr. John F. Noonan
AD: Sheila Wooten
Last Year: 14-17

Head Coach: Matt Donohue
Office Phone: (973) 748-9000 x791
E-Mail: N/A
Overall Record: First year
Assistants: Doug Hedli, Gregory Symons, Richard Porfido
WBKB SID: Steve Patchett
Phone: (973) 748-9000 x780
FAX: (973) 748-2040
E-Mail: steve_patchett@bloomfield.edu

Teikyo Post University

Jan. 11, 6 p.m., at Waterbury, Conn.
Feb. 5, 6 p.m., at Entwisle Gym



Location: Waterbury, CT
Founded: 1890
Enrollment: 1,400
Nickname: Eagles
URL: www.teikyopost.edu
Conference: Central Atlantic
Arena: Drubner Center
Colors: Forest Green & White
President: Dr. Jon Jay DeTemple
AD: Daniel B. Mara
Last Year: 11-21

Head Coach: Paul Ebbs
Office Phone: (203) 596-4534
E-Mail: pebbs@teikyopost.edu
Overall Record: 11-21 (1)
Assistants: Justin Rees, Vincent DiDominzio
WBKB SID: Tom Curle
Phone: (203) 596-4533
FAX: (203) 596-4695
E-Mail: tcurl@teikyopost.edu

St. Leo University

Dec. 31, 3 p.m., at St. Leo, Fla.

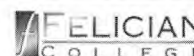


Location: St. Leo, FL
Founded: 1890
Enrollment: 8,720
Nickname: Lions
URL: www.saintleo.edu
Conference: Sunshine State
Arena: Bowman Center
Colors: Brown and Gold
President: Dr. Arthur F. Kirk, Jr.
AD: Fran Reidy
Last Year: 5-22

Head Coach: David Wilson
Office Phone: (352) 588-8447
E-Mail: david.wilson@saintleo.edu
Overall Record: 148-62 (8)
Assistants: Tracy Davis, John Edwards
WBKB SID: Chris Lynch
Phone: (352) 588-8506
FAX: (352) 588-8290
E-Mail: chris.lynch@saintleo.edu

Felician College

Jan. 13, 1 p.m., at Rutherford, N.J.
Feb. 10, 1 p.m., at Entwisle Gym



Location: Lodi, NJ
Founded: 1923
Enrollment: 1,250
Nickname: Golden Falcons
URL: www.felician.edu
Conference: Central Atlantic
Arena: Job Gymnasium
Colors: Hunter Green & Goldenrod
President: Sr. Theresa Mary Martin
AD: Bob Symons
Last Year: 14-17

Head Coach: Ben DiNallo
Office Phone: (201) 559-3507
E-Mail: dinallob@inet.felician.edu
Overall Record: 33-29 (2)
Assistants: Michael Muller, Michael Finding, Eric James
WBKB SID: Ben DiNallo
Phone: (201) 559-3507
FAX: (201) 559-3601
E-Mail: dinallob@inet.felician.edu

Eckerd College

Jan. 2, 7 p.m., at St. Petersburg, Fla.



Location: St. Petersburg, FL
Founded: 1958
Enrollment: 1,582
Nickname: Tritons
URL: www.eckerd.edu
Conference: Sunshine State
Arena: McArthur Center
Colors: Red & Black
President: Dr. Eugene Hotchkiss III
AD: Jim Harley
Last Year: 7-19

Head Coach: Brian Shultes
Office Phone: (727) 864-8586
E-Mail:
Overall Record: 22-57 (3)
Assistants: Paul Honsinger
WBKB SID: TBA
Phone: (727) 864-8242
FAX: (727) 864-8968
E-Mail: TBA

Caldwell College

Jan. 30, 6 p.m., at Entwisle Gym
Feb. 12, 5:30 p.m., at Caldwell, N.J.



Location: Caldwell, NJ
Founded: 1939
Enrollment: 2,100
Nickname: Cougars
URL: www.caldwell.edu
Conference: Central Atlantic
Arena: Student Center Gym
Colors: Scarlet, White and Gold
President: Sr. Patrice Werner
AD: Mark A. Corino
Last Year:

Head Coach: Nicole Amato
Office Phone: (973) 618-3361
E-Mail:
Overall Record:
Assistants: Gary Varjian, Jill Fischman
WBKB SID: Mike Lamberti
Phone: (973) 618-3567
FAX: (973) 618-3370
E-Mail: mlamberti@caldwell.edu

Georgian Court College

Jan. 9, 7 p.m., at Entwisle Gym
Feb. 1, 7 p.m., at Lakewood, N.J.



Location: Lakewood, NJ
Founded: 1908
Enrollment: 1,107
Nickname: Lions
URL: www.georgian.edu
Conference: Central Atlantic
Arena: Casino Arena
Colors: Blue and Gold
President: Dr. Louis Vaccaro
AD: Debbie Emery
Last Year: 7-23

Head Coach: Debbie Emery
Office Phone: (732) 364-2200 x683
E-Mail: demery@georgian.edu
Overall Record: 208-141 (12)
Assistants: Len Anen
WBKB SID: Brian Brodsky
Phone: (732) 364-2200 x689
FAX: (732) 961-9887
E-Mail: bbrodsky@georgian.edu

University of New Haven

Feb. 21, 7 p.m., at West Haven, Conn.



Location: West Haven, CT
Founded: 1920
Enrollment: 1,500
Nickname: Chargers
URL: www.newhaven.edu
Conference: Independent
Arena: Charger Gymnasium
Colors: Blue and Gold
President: Dr. Lawrence DeNardis
AD: Deborah Chin
Last Year: 19-9

Head Coach: Christina Madancy
Office Phone: (203) 932-7098
E-Mail:
Overall Record: First year
Assistants: Kim Bowen
WBKB SID: TBA
Phone: (203) 932-7025
FAX: (203) 932-7470
E-Mail: TBA
Hotline: 1-800-DIAL-UNH x7007

NJIT and the CACC

When NJIT reclassified its athletic programs to NCAA Division II from Division III in 1997, the Highlanders joined the New York Collegiate Athletic Conference (NYCAC). After three years of NYCAC play, the Highlanders began a new era in 2000-01 when they became a member of the Central Atlantic Collegiate Conference (CACC).



NJIT is the only school in the 12-member CACC with full NCAA membership. The other member institutions possess provisional NCAA status, as they are in the process of switching affiliation from the National Association of Intercollegiate Athletics (NAIA). Four CACC schools are within a 30-minute drive of NJIT's Newark, N.J., campus, creating the opportunity for heated local rivalries.

CACC members for 2000-01 include Bloomfield College, Caldwell College, Dominican (N.Y.) College, Felician College, Georgian Court College, Goldey Beacom College, Holy Family College, NJIT, Nyack College, University of the Sciences in Philadelphia, Teikyo Post University, and Wilmington (Del.) College.

'99-'00 CACC STANDINGS

	Overall		Dunkel Rat.
Holy Family	28-3	.903	47.1
Caldwell	19-6	.760	36.1
Dominican	17-11	.607	27.6
Wilmington	12-14	.462	26.9
USP	17-11	.607	26.6
Nyack	10-17	.371	26.5
Felician	12-16	.429	25.1
Teikyo Post	11-20	.355	24.8
Bloomfield	13-16	.449	23.4
Georgian Court	7-21	.250	14.5

NYCAC -- 1999-2000

STANDINGS

	NYCAC		Overall	
Saint Rose	22-0	1.000	34-1	.971
Philadelphia	18-4	.818	22-9	.710
Southampton	17-5	.773	20-9	.690
Adelphi	16-6	.727	18-10	.643
Dowling	12-10	.545	15-13	.536
Molloy	10-12	.455	11-16	.407
NJIT	10-12	.455	11-16	.407
C.W. Post	10-12	.455	10-17	.370
Mercy	8-14	.364	8-18	.308
Queens	6-16	.273	8-18	.308
New York Tech	3-19	.136	4-22	.154
Concordia	0-22	.000	0-26	.000

ALL-CONFERENCE TEAMS

First Team

Ngalula Lukengu, SO, F, *St. Rose*
 Rita Breibaite, SR, C, *Southampton*
 Theresa Carroll, SR, C, *Philadelphia*
 Colleen Sheridan, SR, G, *St. Rose*
 Karen Wusinich, SR, G, *Philadelphia*

Second Team

Johanna Dichiaro, SO, C, *Dowling*
 Kiki Dunston, SR, F, *Queens*
 Nicole LaRocque, SR, G, *St. Rose*
 Meghan Moran, SR, G, *Adelphi*
 Mbuyi Mukendi, JR, C, *St. Rose*

Player of the Year

Ngalula Lukengu, *St. Rose*

Rookie of the Year

Alexis Seeley, *Adelphi*

Academic Player of the Year

Lauren Daley, *NJIT*

Coach of the Year

Kim Barnes-Arico, *Adelphi*

LEADERS

Scoring	GP	Pts.	PPG
Theresa Carroll, <i>Philadelphia</i>	31	671	21.6
Karen Wusinich, <i>Philadelphia</i>	31	659	21.3
Jennifer Batchelor, <i>Concordia</i>	25	399	16.0
Ngalula Lukengu, <i>St. Rose</i>	35	548	15.7
Mary Harrison, <i>Molloy</i>	26	396	15.2

Rebounding	GP	Reb.	RPG
Lauren Daley, <i>NJIT</i>	27	285	10.6
Johanna Dichiaro, <i>Dowling</i>	28	288	10.3
Jen Curtis, <i>Molloy</i>	27	277	10.3
Mary Harrison, <i>Molloy</i>	26	253	9.7
Rita Breibaite, <i>Southampton</i>	29	277	9.6

ABOUT NJIT

NJIT's history spans from the Industrial Revolution to the Information Age. Newark was a factory town when the tuition-free evening school was founded in 1881 to support local industries. From the early days, science and technology have been the engines fueling the university's development.

Over time, the university both anticipated and responded to change by expanding its curriculum and mission. Most notably, in 1919, the university established baccalaureate programs in three engineering fields. By 1975, NJIT offered a broad range of undergraduate and graduate degrees. All programs included significant research and public service components with the goal of providing an academic environment that fostered intellectual depth and breadth, as well as social responsibility.

Today, continuing a fourfold mission of instruction, research, economic development and public service, NJIT is among the leading comprehensive technological universities in the nation. The university has state-of-the-art facilities with more than 2,000,000 square feet of space located on a 45-acre campus in Newark, a Technology and Engineering Center at our 125-acre campus in Mount Laurel shared with Burlington County College, and a solar observatory in Big Bear, Calif.

NJIT's Five Colleges

While there has been tremendous growth and diversification at NJIT, its roots are in engineering education. For more than eight decades, **Newark College of Engineering (NCE)** has been preparing engineering students to use science, mathematics, technology and problem-solving skills to design, construct, test and maintain products, services, and information systems.

The **New Jersey School of Architecture**, established in 1974, is one of the largest architecture schools in the nation and is nationally recognized for the innovative integration of computer technology into the design curriculum.

The **College of Science and Liberal Arts (CSLA)**, established in 1982, is moving into the forefront of many national research activities from solar astronomy to computational and mathematical modeling. CSLA provides students with the skill sets for the

professional marketplace including literacy in the computer, mathematical, physical and biological sciences, as well as the traditional liberal arts disciplines.

The **New Jersey School of Management**, established in 1988, combines the best of the traditional business disciplines (e.g., finance, marketing, accounting, e-commerce) with the power of information and technology management to develop professionals who can manage and communicate effectively.

The **Albert Dorman Honors College**, established in 1993, offers one of the nation's leading technologically oriented honors programs for students who are prepared to undertake a rigorous and individualized course of study.

NJIT Mission Statement

NJIT is a **public, urban, research university**, committed to the **pursuit of excellence** in

- * undergraduate, graduate, and continuing professional **education**, preparing students for productive careers and amplifying their potential for lifelong personal and professional growth;

- * the conduct of **research** in such multi-disciplinary areas as environmental engineering, materials science, manufacturing, productivity enhancement, infrastructure systems, communications, technologies, and an array of bio-related sciences and technologies;

- * contributing to the state's **economic development** through partnerships and joint ventures with the business community and through the development of intellectual property;

- * **service** to both its local communities and the broader society of the state and nation by conducting public policy studies, making educational opportunities widely available, and initiating community-building projects.

NJIT **prepares its graduates** for positions of leadership as professionals and as citizens, **provides educational opportunities** for a broadly diverse student body, **responds to needs** of large and small businesses, state and local governmental agencies, and civic organizations, and **advances the uses of technology** as a means of improving the quality of life.

NJIT offers a **comprehensive array of programs** in engineering technology, computer science, architecture, applied sciences, mathematics, management, policy studies, and related disciplines throughout New Jersey and the nation.

NJIT WOMEN'S BASKETBALL 2000-01 SCHEDULE

Day	Date	Opponent	Time
Tue.	Nov. 21	DOMINICAN*	6:00
Mon.	Nov. 27	KUTZTOWN	7:00
Wed.	Nov. 29	at Goldey Beacom*	6:00
Sat.	Dec. 2	at The Sciences*	1:00
Mon.	Dec. 4	LIU-SOUTHAMPTON	7:00
Wed.	Dec. 6	at Nyack*	6:00
Sat.	Dec. 9	at Wilmington*	1:00
Fri.	Dec. 15	HOLY FAMILY*	6:00
Tue.	Dec. 19	BLOOMFIELD*	5:30
Sun.	Dec. 31	at St. Leo	3:00
Tue.	Jan. 2	at Eckerd	7:00
Tue.	Jan. 9	GEORGIAN COURT*	7:00
Thu.	Jan. 11	at Teikyo Post*	6:00
Sat.	Jan. 13	at Felician*	1:00
Wed.	Jan. 17	at Dominican*	6:00
Sat.	Jan. 20	at Bloomfield*	1:00
Sat.	Jan. 27	THE SCIENCES*	1:00
Tue.	Jan. 30	CALDWELL*	6:00
Thu.	Feb. 1	at Georgian Court*	7:00
Sat.	Feb. 3	GOLDEY BEACOM*	1:00
Mon.	Feb. 5	TEIKYO POST*	6:00
Wed.	Feb. 7	NYACK*	6:00
Sat.	Feb. 10	FELICIAN*	1:00
Mon.	Feb. 12	at Caldwell*	5:30
Wed.	Feb. 14	WILMINGTON*	6:00
Sat.	Feb. 17	at Holy Family*	6:00
Wed.	Feb. 21	at New Haven	7:00

* Central Atlantic Collegiate Conference

Home games (CAPS) at Entwisle Gymnasium