

Men's Basketball
2007-08



njithighlanders.com





About NJIT	2-3
University Administration	4
Student-Athlete Support	5
NJIT in Division I	6
Coaching Staff	7-9
The Total Program	10
Roster	11
Outlook	12-13
Player Profiles.....	14-24
2006-07 Statistics and Results.....	25
Athletic Facilities	26
About Newark.....	27
Happenings In and Around Newark	28
School Records	29-31
Highlanders in Postseason.....	31
All-Time Results	32-36
Division I Superlatives	36
Dick's Sporting Good NIT Season Tip-Off	37
2007-08 Opponents Information	37-41
Directions/Accommodations	42
Athletics/PE Staff	43
NJIT Hall of Fame	44
Spotters Chart.....	48

Front Cover: (l-r): Captain Kraig Peters; Dan Stonkus; Nesho Milosevic.

Back cover: the Highlanders huddle before the start of the game; 2007-08 schedule

Inside front cover: the clock tower on the campus of NJIT. **Inside back cover:** the 2007-08 Highlanders team picture (all photos by Larry Levanti).

MEDIA INFORMATION

This guide is designed to assist in coverage of NJIT basketball. For home games, the NJIT sports information office will provide an official box score 10 minutes following each game. Coach Jim Casciano and requested players will be available for interviews on the basement level of Fleisher Athletic Center following a 10-minute cooling-off period. Radio broadcast requests should be made at least 10 business days prior to the contest.

Requests for coach and player interviews on non-game days should be made through the NJIT sports information office (973-596-8461).

CREDITS

The 2007-08 NJIT Men's Basketball Media Guide is a production of the NJIT Sports Information Office in cooperation of the Office of University Communications. Compiled, written and edited by Tim Camp and Stephanie Pillari. Cover and interior design by Samantha Horning Graphic

Design. NJIT photographs and information courtesy of University Communications. Page 26 photo of the Prudential Center, courtesy of the New Jersey Devils. Page 5 (Rigby headshot); action photos on pages 6, 10, 11, 13 (Magnus), 14, 15, 16 (by Steve Smith). Page 17 and 18 action photos (by Jim Clarke). All other team and action photos by Larry Levanti. Printing by Prestige Graphics, Union, NJ.

WHY THE HIGHLANDERS?

The home of NJIT, University Heights, was formerly known as the Newark Highlands and NJIT's mailing address used to be High Street, until the thoroughfare was re-named in memory of Dr. Martin Luther King, Jr.

In 2006-07, NJIT athletics, in keeping with its move to NCAA Division I, is unveiling a new graphic identity, which includes a new Highlanders logo. Developed by CN Foundry for NJIT, the logo depicts the traditional Highlander, whose courage and bravery against all odds are the stuff of legend.



QUICK FACTS

NEW JERSEY INSTITUTE OF TECHNOLOGY (NJIT)

Location: University Heights, Newark, NJ

Founded: 1881

Enrollment: 5,380 (*undergraduate*)

NJIT website: www.njit.edu

Nickname/colors: Highlanders/red and white (*blue accent*)

Home court: Estelle and Zoom Fleisher Athletic Center/Prudential Center (1,500/18,500)

Affiliations: NCAA Division I, ECAC

Conference: Independent

University President:

Dr. Robert A. Altenkirch

Director of Athletics: Lenny Kaplan

Athletic Department phone:

973-596-3636

Sports Information

NJIT athletics website:

www.njithighlanders.com

Results hotline: 973-596-5555

Assistant AD for Sports Information:

Tim Camp (973-596-8461;
timothy.camp@njit.edu)

Assistant SID: Stephanie Pillari
(973-596-8324; pillari@adm.njit.edu)

Men's Basketball

Head coach (alma mater, year):

Jim Casciano (*Drexel, 1977*)

Contact info: 973-596-5727;

casciano@adm.njit.edu

Career record (years): 262-292 (21 at all colleges); 212-273 (18 at four-year schools)

Assistant coaches: Wendell Alexis, Steve Brodzinski, David Grande

Captain: Kraig Peters

2006-07 record: 5-24

Returning/lost (starters): 5 (3)/6 (2)

NJIT is New Jersey's Science & Technology University. With roots going back to 1881, when it was founded as Newark Technical School, New Jersey Institute of Technology observed its 125th anniversary in 2006.

Located in University Heights, Newark, NJ, home to more than 30,000 college students, NJIT's campus is just 10 miles from New York City.

Playing a critical role in shaping New Jersey's future, NJIT, as a major public technological university, is an important pipeline for the flow of technology into society. The university's educational programs prepare students to be leaders in the technology-dependent economy of the 21st century. University researchers seek new knowledge to improve processes and products for industry. Through public and private partnerships and economic development efforts, the university helps to grow new business ventures that fuel the economy.

In recent years, NJIT has put more than \$83 million toward new and improved buildings and facilities on the 45-acre campus, including biomedical engineering labs and a campus center.

INSTRUCTIONAL PROGRAMS

NJIT offers 92 degree programs — 33 undergraduate, 40 master's and 19 doctoral programs — through six schools:

Newark College of Engineering
New Jersey School of Architecture
College of Science and Liberal Arts
School of Management
Albert Dorman Honors College
College of Computing Sciences

NJIT has 416 full-time faculty; more than 98 percent of whom hold the highest degree in their field. The student-faculty ratio is 13:1, with more than 5,200 undergraduate students and nearly 2,800 graduate students. Our students hail from 33 states and more than 100 countries to rank eighth in the nation for diversity.

Albert Dorman Honors College enrolls more than 500 students who take advantage of honors courses, research opportunities, advising and mentoring. Honors College students have SAT scores ranking in the top 10 percent nationally.

RESEARCH

NJIT drew more than \$75 million in research funding in 2005 and faculty members welcome student collaboration on research projects.

ECONOMIC DEVELOPMENT

NJIT is committed to economic development for Newark and the region. The university operates several outreach centers that provide direct technical assistance to the state's businesses with the goal of helping small and medium-sized companies. NJIT is also the home of New Jersey's oldest and largest incubator facility, and was one of the first institutions in the nation to adopt economic development as a fourth mission element, together with instruction, research and community service. More than 60 technology start-up companies, many of which hire NJIT students, are on campus.

THE CAREER EDGE

All 10 of the majors with the highest starting salaries for 2005-06 grads are in engineering, computing and business, according to the National Association of Colleges and Employers.

Computer and data processing services lead the list of the 10 fastest-growing occupations in projections compiled by the US Department of Labor. Computer-related employment is expected to grow 117 percent by 2008, according to the Career Guide to Industries.





As technology changes all fields, those with science and technology backgrounds are positioned to lead. Among the CEOs of the S&P 500 companies, engineering is the single largest undergraduate degree and more than half of CEOs have undergraduate degrees in engineering, business management, science, math and computing.

THE GLOBAL EDGE

The diversity in NJIT's student body and faculty prepares graduates to understand and succeed in the global marketplace. NJIT was named among the world's top 500 universities in a study by the Institute of Higher Education, Shanghai Jiao Tong University.

THE TECHNOLOGY EDGE

NJIT has been designated one of the nation's most technologically sophisticated universities by Forbes.com and a Princeton Review survey and the university has received major funding from the National Science Foundation and the National Security Agency in recent years.

THE ACADEMIC EDGE

NJIT has long been a national leader in applying new technologies and approaches to the educational experience. NJIT was a pioneer in requiring computer science for students in all majors and the School of Architecture has led innovations in teaching CAD and digital design. The school's innovative "paperless" first-year program was recently cited by Campus Technology Magazine.

Students have a wide range of educational choices in building an interest-tailored program. Among their options are cross-enrolling at neighboring Rutgers to enrich their program with subjects such as music and languages.

NJIT students learn emerging technologies from the researchers behind the technologies, developing valuable marketplace skills. Real-world experience through experiential learning makes graduates more marketable, with many co-op opportunities leading to permanent jobs.

THE REGIONAL EDGE

New Jersey, with America's highest concentration of pharmaceutical, hi-tech, biotech, and medical device companies is the place to study technology. It has the nation's highest per capita number of engineers and scientists as residents, while also leading in per capita rate of patents issued. Further, the Newark-New York region is a living laboratory for architecture and building sciences, environmental engineering and transportation.

THE RESEARCH EDGE

NJIT has been designated by the State of New Jersey as the Homeland Security Technology Systems Center and NJIT operates the world-renowned Big Bear Solar Observatory.

A HISTORY OF NJIT

From the Industrial Revolution to the Information Age, New Jersey Institute of Technology has a rich history with its beginnings developing from the industrial age.

In 1881, an act of the New Jersey State Legislature, recognizing an urgent need, sought a home for what would be the state's technical school. The efforts of Newark's public and private sectors resulted with the opening of Newark Technical School, addressing the state's need.

Over time, the university expanded its curriculum and mission. In 1919, the university established baccalaureate programs in three engineering fields. By the middle of the 20th century, Newark Technical School was transformed into the robust Newark College of Engineering.

The post-war period was one of enormous activity with regular expansion of the campus, as well as the introduction of doctoral level programs. In 1975, with the addition of the New Jersey School of Architecture, the institution had evolved into a technological university, emphasizing a broad range of degrees and dedication to significant research and public service. Newark College of Engineering, stronger than ever, remained intact, but a new university name — New Jersey Institute of Technology — reflected the institution's expanded mission.

A broadened mission called for the creation of a residential campus and the opening of NJIT's first dormitory in 1980 began a period of steady growth that continues. Two new schools were established during the 1980s—the College of Science and Liberal Arts (1982) and the School of Industrial Management (1988). The Albert Dorman Honors College was established in 1994, and the newest school, the College of Computing Sciences, was created in 2001.



DR. ROBERT A. ALTENKIRCH*President*

Dr. Robert A. Altenkirch, formerly vice president for research at Mississippi State University (MSU), joined NJIT as the university's seventh president in July 2002. During his tenure as MSU vice president for research, science and engineering, expenditures as reported to National Science Foundation (NSF) increased dramatically—75% from 1997 to 2001.

Prior to his appointment as vice president at MSU, Altenkirch served as professor of mechanical and materials engineering and dean of the College of Engineering and Architecture at Washington State University. From 1988 to 1995, he was professor of mechanical engineering and dean of the College of Engineering at MSU. He also served as professor and chair of mechanical engineering at the University of Kentucky.

In addition to the research program, his responsibilities encompassed congressional relations, intellectual property management and economic development. While dean of engineering at MSU, he led the effort to secure National Science Foundation funding for the establishment of the MSU NSF Engineering Research Center for Computational Field Simulation in 1990. Additionally, the Center was instrumental in helping the State of Mississippi attract a \$1 billion Nissan manufacturing plant.

Altenkirch holds a PhD from Purdue University, an MS from the University of California, Berkeley, and a BSME from Purdue, all in mechanical engineering. He is the author of over 50 publications and nearly 100 presentations in combustion and heat transfer and served as principal investigator for ten Space Shuttle experiments investigating the spread of fire in reduced gravity. He is a Fellow of the American Society of Mechanical Engineers.

DR. JOEL BLOOM*Vice President of
Academic and Student Services*

Dr. Joel Bloom has worked at NJIT since July 1990. In his current position, he is responsible for nine divisions of the university, including Physical Education and Athletics.

Dr. Bloom is also Dean of the Albert Dorman Honors College, which enrolls more than 525 students who are typically in the top 10 percent of their high school graduating class.

Prior to NJIT, Dr. Bloom spent seven years as assistant Commissioner in the New Jersey Department of Education. He is currently the Chair of the NASULGC Council of Chief Student Affairs Officers and the Newark Consortium Board for Pre-College Education.

Dr. Bloom earned his Bachelor's and Master's Degrees from Hunter College, and holds a Master's and Doctorate from Columbia University Teachers College.

**LENNY KAPLAN***Director of Athletics*

Since taking over as head of NJIT's division of physical education and athletics in August 2000, Lenny Kaplan was instrumental in establishing a sound NCAA Division II program, setting the stage for the reclassification into NCAA Division I.

Kaplan helped solidify and expand an NJIT program that was entering its fourth year in Division II when he arrived in Newark and in late 2002, after discussions with university President Dr. Robert A. Altenkirch and Vice President Dr. Joel Bloom, Kaplan began the task of steering NJIT's programs into Division I, a process that is set to reach fruition with full championship eligibility in 2009-10.

Along the way, NJIT has enhanced the athletics program, particularly in areas that will benefit the student-athletes directly.

The sports offerings have expanded to 19 varsity sports, and since 2004, NJIT has renovated its two main on-campus venues—Lubetkin Field and the Estelle and Zoom Fleisher Athletic Center. The school also signed a 10-year partnership to play its home baseball in the Bears and Eagles Riverfront Stadium and agreed to host basketball in the new home of the NHL's New Jersey Devils.

In 2005-06, NJIT's outstanding home facilities allowed it to host two ECAC Division II postseason championships—women's soccer in the fall and baseball in the spring.

Under Kaplan's leadership, many teams achieved regional and national Division II ranking. Success for several women's teams was unprecedented, with basketball, tennis and soccer all reaching postseason play for the first time.

Additionally, men's volleyball captured a 2007 divisional championship in the Eastern Intercollegiate Volleyball Association.

Before coming to NJIT, Lenny Kaplan served 11 years at Manhattan College, where he began as Manhattan's director of operations and then advanced to assistant athletics director.

Kaplan, a 1988 graduate of St. John's University with a degree in athletics administration, resides in Merrick, NY, with his wife, Nancy, and their sons, Michael and Joshua.

SPORTS MEDICINE

NJIT's sports medicine staff takes on a new look in 2007-08 with the addition of head athletic trainer Drew Van Dam, MS/ATC/L and assistant athletic trainer Amanda Albright, MS/ATC/L.



Drew Van Dam

They will work with team physicians Louis Rizio, MD, and Rutvik (Rudy) Patel, DO.

Van Dam, a New Jersey native who earned his bachelor's degree from Springfield (MA) College and his master's degree from Ohio University, comes to NJIT from the Atlanta Braves organization, where he was trainer with five different teams from 2001 to 2007.

He began with the Rookie level Gulf Coast Braves and moved up the organizational ladder to the Class AA Mississippi Braves, where he worked in 2006 and 2007.

In addition to his work with the Southern League Braves, he was the Braves' short-season athletic training coordinator, overseeing the athletic trainers for the organization's three short-season squads. He advised the trainers with the short-season teams and also provided medical information to each club, as well as to minor and major league officials with the Atlanta Braves.

In 2007, Van Dam was the Southern Division team trainer in the Southern League All-Star Game and he was honored as South Atlantic League Trainer of the Year in 2003.

In addition to his work in professional baseball, Van Dam has worked on the training staff at the College of New Jersey, as well as on the staff of the Hun School of Princeton and at Wellston (OH) High School.

Amanda Albright comes to NJIT from Bloomsburg (PA) University, where she advanced through the ranks from athletic



Amanda Albright

training graduate assistant, to part-time assistant athletic trainer and then to full-time assistant athletic trainer.

Albright, who earned her bachelor's degree from Slippery Rock (PA) University, received her master's degree from Bloomsburg.

In addition to her athletic training work, she was a Physical Therapy Aide in Slippery Rock and in Lock Haven, PA.

Dr. Rizio is a board certified orthopedic surgeon and is fellowship trained in the field of sports medicine. He is a graduate of Rutgers and after earning his medical degree from the UMDNJ/New Jersey Medical School, Dr. Rizio completed his orthopedic residency at Tufts University in Boston.

He then completed a sports medicine fellowship at the University of Miami. During his fellowship, he was assistant team physician of the Miami Dolphins, University of Miami Hurricanes, and the Florida Marlins.

Dr. Rizio, who specializes in sports-related injuries, practices at the New Jersey Sports Medicine Institute. Prior to starting his own practice, Dr. Rizio was the Chief of Sports Medicine at the NJ Medical School from 2000-2005. He currently is a professional (New Jersey Pride professional lacrosse), college, and high school team physician.

Dr. Patel practices in association with Dr. Rizio. A cum laude graduate of New York Institute of Technology, Dr. Patel earned his DO from the New York College of Osteopathic Medicine. He was chief resident in Family Medicine at the Robert Wood Johnson Medical School in New Brunswick, NJ, from 2003 to 2006.

ACADEMIC ENRICHMENT

NJIT's Center for Academic and Professional Enrichment (CAPE) took on a new facet with the hiring of Erika Rigby, whose position as Associate Director of CAPE was created for the specific purpose of supporting the academic and professional enrichment of NJIT's student-athletes.

She focuses on five key areas: academic support, career development, personal development, leadership and community service including the Student-Athlete Advisory Committee and CHAMPS Life Skills for NJIT's nearly 300 student-athletes in 19 inter-collegiate sports.

Erika Rigby came to NJIT from Seton Hall University, where she was Associate Director of Academic Support Services for the Pirates athletic program from 2004 until taking her current post in the fall of 2007. At Seton Hall, she worked directly with men's basketball,

women's soccer, women's volleyball and swimming, assisting in class scheduling, tests and tutoring sessions.



Erika Rigby

The Jersey City, NJ, native is working with her fourth Division I program in a career that began in 1997 at Northern Arizona, where she was director of the Academic Enrichment Program.

She returned to her hometown, serving as Academic/Athletic Coordinator at Saint Peter's College, where she was responsible for the academic progress of over 300 student-athletes in 20 sports, from 1999 to 2004.

Rigby holds a bachelor's degree in psychology from Providence College, where she was an intercollegiate runner who earned Big East Conference all-academic honors.

She earned two master's degrees—one from Northern Arizona in educational leadership and one from Saint Peter's in administration and supervision—and she is pursuing her doctorate in higher education at Seton Hall.

A member of the National Association of Academic Advisors for Athletes, she is on the NCAA Initial Eligibility Waiver Committee.

She also worked in the office of former United States Senator Bill Bradley of New Jersey.

NJIT's Center for Academic and Professional Enrichment, headed by Dr. Marybeth Boger, is a resource available to all students within NJIT's Student Services Division. It provides academic support services and activities to enhance students' academic and professional development.

The CAPE works together with academic and administrative departments to help students develop the necessary analytical and problem-solving skills to become independent learners.

CAPE provides individual tutoring sessions, group tutorial sessions, student success workshops and testing accommodations.

New Jersey Institute of Technology athletics is on the move to the top level of college athletics—NCAA Division I.

The reclassification is well underway, with all of the programs that previously competed in Division II moving up to face Division I competition effective in 2006-07.

The NCAA has okayed NJIT to reclassify its entire athletics program to Division I, a four-year process that will bring all Highlander sports to full Division I status and championship eligibility in 2009-10.

Two sports—men's soccer and women's soccer—are paving the way on a faster NCAA track that allows lower division schools to elevate one sport in each gender to Division I in a process that takes two years to complete.

NJIT men's soccer became a full member of NCAA Division I at the start of the 2005 season, when the Highlanders arrived at championship eligibility. The men's journey to the top level began in 2003. NJIT women's soccer began a similar two-year process in 2005, with full Division I status and championship eligibility arriving in the 2007 season.

The larger process of advancing the entire program to Division I takes four years to complete and includes application, a detailed strategic plan and in-depth annual review of the institution's progress in moving toward its goal of complying with NCAA Division I rules and building a strong, broad-based athletics program.

NJIT's move to Division I has gone quickly since the November 2002 discussions among President Robert A. Altenkirch, Vice President Joel Bloom and Athletics Director Lenny Kaplan.

From there, came a proposal from Dr. Altenkirch to the Board of Trustees, which unanimously approved in February 2003 a plan to reclassify men's soccer to Division I. Little more than two years later, the NCAA approved NJIT's proposal to advance its entire program to Division I.

Along the way, scholarship and operating budgets have been enhanced, with expanded coaching staffs, increased scholarship dollars and upgraded facilities for competition and practice.

Upgrading athletics has been a priority for Dr. Altenkirch since he was selected as the seventh President of NJIT in May 2002.

"As NJIT continues to grow academically, and as a residential university, strengthening the athletics program through the transition to Division I will allow us to align the university athletically with our academic peers," said Altenkirch. "It will also enable us to recruit the best and brightest student-athletes, improve athletics facilities available to the entire NJIT community, gain regional and national visibility, and build strong linkages with students that will carry over to their days as alumni."

DIVISION I FIRSTS FOR NJIT

(11/11/06 vs. Manhattan)

FIRST WIN

Game 1 vs. Manhattan, 56-55

FIRST BASKET

Marc Milbourne Swan, layup (18:31 first half)

FIRST REBOUND

Swan (18:43 first half, defensive)

FIRST ASSIST

Clayton Barker (17:19 first half, assisted Dan Stonkus)

FIRST STEAL

Courcy Magnus (15:49 first half)

FIRST BLOCKED SHOT

Dan Stonkus (5:06 first half, blocked Arturo Dubois)

FIRST THREE-POINT BASKET

Andrew Engel (13:36 first half)

FIRST LEAD

8-7 on Engel's three-pointer with 13:36 left in the first half

BIGGEST LEAD OF OPENING GAME

two points (twice in the first half; three times in second half)

BIGGEST DEFICIT OF OPENING GAME

14 (trailed, 39-25, with 16:08 remaining)

GAME-WINNING BASKET

Clayton Barker layup for 56-55 lead with 31 seconds remaining

FIRST PLAYER TO REACH

DOUBLE-FIGURE SCORING

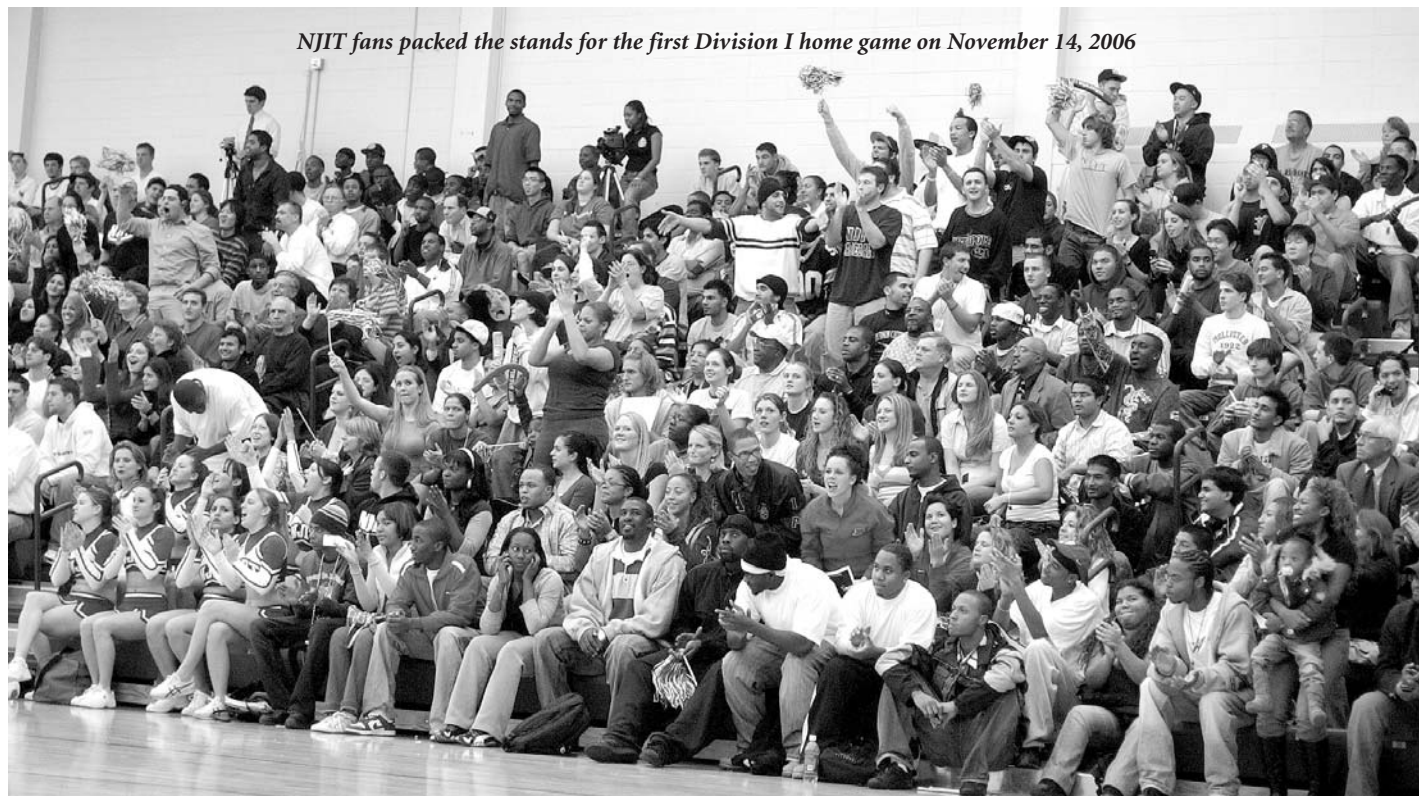
Nesho Milosevic (layup with 11:12 remaining)

FIRST PLAYER TO REACH

DOUBLE-FIGURE REBOUNDING

Nesho Milosevic (4:50 remaining)

NJIT fans packed the stands for the first Division I home game on November 14, 2006



JIM CASCIANO

Head Coach



Entering his 22nd season as a college head coach and his seventh at the NJIT helm, Jim Casciano has achieved the rare distinction of having directed teams at every level of four-year colleges and at the two-year level.

Last year, Casciano's Highlanders moved up to face NCAA Division I competition, adding another layer to a resume that has seen him lead a two-year program (Valley Forge Military), an NAIA program (Castleton State) and all three NCAA levels—Division III (King's, PA); Division II (St. Michael's, VT, and NJIT) and now the reclassification to Division I by NJIT.

He has produced at least 13 wins in a season at every previous step on the competitive ladder and at three of his stops he revitalized downtrodden programs.

Entering 2006-07 with a 5-4 record coaching lower division teams against Division I teams, Casciano led NJIT to wins in its first two games at the new level, upsetting defending Metro Atlantic Athletic Conference regular season champion Manhattan and then Rider.

One of the few other coaches with stops at all levels is Michigan coach John Beilein, who directed programs from the junior college level (Erie CC) and all three levels of the NCAA (Division III Nazareth; Division II Le Moyne; and three other Division I programs before Michigan).

Casciano reached two career milestones on the same night, posting his 250th career college head coaching win and his 200th win at the helm of a four-year program. The historic win came in the 2005-06 season opener against St. Michael's of Vermont in the West Chester (PA) tournament. Interestingly, the game was near his hometown of Bridgeport, PA and 88 of his career wins came as coach of St. Michael's from 1983-89.

Casciano has enjoyed success with the Highlanders. In his second season at NJIT (2002-03), his Highlanders finished first in the Central Atlantic Collegiate Conference and were finalists in the ECAC Division II Tournament. That season's 18 wins were the most in NJIT's Division II era. The prior season, Casciano was co-CACC Coach of the Year, after guiding the Highlanders to second place.

Immediately before coming to NJIT, he won the 2001 ECAC Division III South Championship with King's. After amassing 12 combined wins in his first three seasons, the Monarchs turned the corner in the fourth year (13-11; 1st winning season in 6 years) and then improved to 19-9 in 2000-01, before Casciano left for NJIT.

The turnaround at King's was typical of Casciano's career. In his first head coaching position at Castleton (VT) State in 1982-83, he established a school record for victories (14) and earned a berth in the NAIA tournament.

Next, he moved within Vermont to Division II St. Michael's. After two rebuilding years, his 1985-86 squad was 19-10 and Casciano was conference Coach of the Year. The next year brought a conference title, SMC's first 20-win season (20-11) in 12 years and earned the program's first NCAA tournament berth in 20 years.

The following year (1987-88), St. Michael's was ranked first in the nation in Division II in preseason by Sports Illustrated. Again, after the initial rebuilding, Casciano compiled four consecutive winning seasons with St. Michael's.

Returning to the head coaching ranks in 1993, he took over at Valley Forge Military College in Wayne, PA, compiling a 50-19 record and sending five players on to Division I scholarships in three seasons.

Casciano began coaching as a volunteer assistant to the legendary Rollie Massimino at Villanova. He has also assisted at Delaware, Washington & Lee, Old Dominion and Radford, plus three years as a women's basketball assistant at Temple.

He played college basketball at Drexel University, where he earned a bachelor's degree in business administration in 1977. The Bridgeport, PA, native resides in Basking Ridge, NJ, with his wife, Daphne.



JIM CASCIANO'S COACHING TIMELINE

YEAR	SCHOOL	RECORD	NOTES
1974-75	Villanova		Assistant Coach
1975-76	Delaware		Assistant Coach
1977-80	Washington & Lee		Assistant Coach
1980-82	Old Dominion		Assistant Coach
1982-83	Castleton State	14-11	School record for wins, NAIA berth
1983-84	St. Michael's	7-19	
1984-85	St. Michael's	7-21	
1985-86	St. Michael's	19-10	MCC Coach of the Year, MCC berth
1986-87	St. Michael's	20-11	MCC Champion, NCAA berth
1987-88	St. Michael's	17-11	Sports Illustrated Preseason No. 1, NE-10 berth
1988-89	St. Michael's	18-10	Northeast-10 berth
1989-90	Radford		Assistant Coach
1990-93	Temple		Assistant Coach (women)
1993-94	Valley Forge Military	16-9	
1994-95	Valley Forge Military	17-6	
1995-96	Valley Forge Military	17-4	
1996-97	King's	3-20	
1997-98	King's	2-21	
1998-99	King's	7-17	
1999-2000	King's	13-11	
2000-01	King's	19-9	ECAC champion, MAC berth
2001-02	NJIT	14-13	co-CACC Coach of the Year
2002-03	NJIT	18-11	CACC regular season champion CACC berth; ECAC Tournament runner-up
2003-04	NJIT	10-18	CACC berth
2004-05	NJIT	11-17	CACC berth
2005-06	NJIT	8-19	
2006-07	NJIT	5-24	1st season of Division I competition
NJIT TOTAL	6 seasons	66-102	
OVERALL TOTAL	21 seasons	262-302	
4-YEAR SCHOOLS	18 seasons	212-273	
2-YEAR SCHOOL	3 seasons	50-19	

Notes: Records are listed for seasons as a head coach; 2001-02 record, per NCAA statistical rules, reflects on-court record and does not include a forfeit victory later awarded by administrative action; NCAA statistical rules recognize records at four-year institutions only. Valley Forge Military College (1993-96) competes at the two-year level.

WENDELL ALEXIS*Assistant Coach*

After a long stellar playing career, Wendell Alexis joined the coaching staff at New Jersey Institute of Technology in August 2005.

NJIT is the first college coaching stop for Alexis, but he has spent his entire adult life in the game, having starred at Syracuse, where he graduated in 1986, and continuing through a professional career that lasted nearly 20 years until his retirement in 2004.

A graduate of Christ the King High School in Queens, Alexis was one of the top players in New York City before heading off to Syracuse. He scored 1,212 career points and grabbed over 400 rebounds, earning all-Big East for teams that consistently ranked among the best in the country.

Drafted by the Golden State Warriors in 1986, he spent his professional career overseas, starring in some of the top foreign leagues, including Spain, Italy, Israel, France, Germany and Greece. He was an all-star in the Euroleague (leading club teams from throughout the continent) from 1998 to 2001.

In 1998, he represented the United States as a member of the bronze medal-winning Team USA at the World Basketball Championships in Athens, Greece.

He began his pro career in Spain and moved on to Italy, where he played from 1988 to 1993, earning Italian league Most Valuable Player honors in 1993. Joining the famed Maccabi Tel Aviv team, Alexis was MVP of the Israeli league when his team captured the league and cup championships in 1993-94.

He later played in France and then moved to Germany, where he played from 1996 to 2002. Along the way, Wendell was a three-time MVP of the German league and in 1998 was third in the voting for Athlete of the Year in Berlin, a remarkable feat, considering the overwhelming popularity of soccer in that country.

After a year in Greece, Alexis returned to Germany, where he led his new team, Mitteldeutscher, to its best record and its first-ever European trophy—the 2004 FIBA Cup. As a result, he capped his career as MVP for the Western region of FIBA, basketball's world governing body.

Having gone out at the top of his game as a player, Wendell Alexis spent a year coaching as an assistant at St. Joseph High School in Metuchen, NJ, and also as head coach of the MSU Skyliners 16u AAU team, before joining the staff at NJIT. At St. Joseph, he worked extensively with Andrew Bynum, who went directly from high school to the NBA's Los Angeles Lakers.

He and his wife, Nixia, reside with their three sons in Hillsborough, NJ.

STEVE BRODZINSKI*Assistant Coach*

Steve Brodzinski joined the NJIT coaching staff in the summer of 2007 after spending two seasons as an assistant at Clarion University of Pennsylvania, working for the highly-respected head coach Ron Righter, who has nearly 350 career college wins.

Brodzinski, who earned a master's degree from Clarion in 2007, is a 2005 graduate of New York University, where he was a four-year varsity player, competing on some of the top Division III teams in the Northeast region.

He is also a graduate of longtime Philadelphia high school basketball powerhouse Roman Catholic High, where he started on the Philadelphia Catholic runner up as a senior.

He is the son of Barry Brodzinski, a former college star at La Salle and a longtime coach renowned as a shooting guru. The elder Brodzinski is featured in numerous videos produced and sold by the famed Five-Star Basketball Camp, as well as working one-on-one with many athletes, including NBA pros.

Noting the younger Brodzinski's basketball roots, as well as a passion for coaching that has seen him work as a counselor at Five-Star and at the Duke University camp in his brief career, NJIT head coach Jim Casciano said: "Steve grew up in a basketball family, so he has been around the game and coaching since he was four or five years old. He is someone who will bring enthusiasm and a great work ethic to our program, as well as the ability to relate to our players."

DAVID GRANDE*Assistant Coach*

David Grande, who joined the staff as a volunteer assistant coach for the 2005-06 season, has made his living as a successful businessman, but the game of basketball has never been far from his life.

A 1975 graduate of West Chester University in Pennsylvania, he played basketball there after a year as a student and basketball player at Drexel. He later earned an MBA in marketing from Widener.

He is President of Vitusa Products, Inc. of Berkeley Heights, NJ, and before that was Executive Vice President of Vitusa Corporation of Englewood Cliffs, NJ, from 1981 to 1996. Going back farther he held various corporate managerial positions.

At the same time, Grande coached school and high school basketball from 1986 to 2005, including from 1997 to 2005 at Oratory Prep in Summit, NJ.

He is also a co-founder and board member of Cherished Creations, a non-profit, New Jersey-based charity that helps create better lives for seriously ill children and the underprivileged.

Founded in 1997, it fulfills its mission primarily through a national wish/request program. NJIT head coach Jim Casciano, a college teammate of Grande's at Drexel in the 1970's, has been a supporter of Cherished Creations since its inception and the 2004-05 Highlanders team adopted the wish of a 12-year old girl who was stricken with leukemia.

David and his wife, Angela, reside in Millington, NJ. They are the parents of three children: Daniela, Bianca and Anthony.

TEAM MANAGERS

Purven Shah, *head team manager*

Morris Halton-Lowery, *first assistant manager*

Alvin Rinaldo

Omar Awad

DEDICATED TO EXCELLENCE*“NJIT: The Total Program”*

NJIT’s basketball coach, Jim Casciano, has dedicated his coaching philosophy to the development of the total person. In the classroom, on the court, and in everyday life, Casciano believes his student-athletes will develop into well-rounded, purposeful individuals through a commitment to four areas: (1) Teaching Values; (2) Building Dreams; (3) Formula for Success; and (4) the Head Coach – Casciano’s individual role. The following is a summary of Casciano’s philosophy:

Teaching Values

- Discipline
- Work ethic
- Communications
- Learning
- Caring
- Decision-making

Formula for Success

- Recruit good people
- Develop a strong work ethic
- Emphasis on academic achievement
- Develop basketball skills
- Develop broad-based support
- Community involvement
- Create a “family atmosphere”

Building Dreams

- Gain respect
- Build a tradition
- Campus and community support
- 100% graduation rate
- Championship teams
- NCAA post-season play

Head Coach

- Dedication
- Enthusiasm
- Knowledge
- Positive role model
- Discipline
- Faith
- Family

**JIM CASCIANO’S
“TEN-STEP APPROACH”
to Academic Success**

In his more than 20 years as a head coach, Jim Casciano has a near 100-percent graduation rate of players who have remained in his program for four years. He credits this to his “Ten-Step Approach” to academic success, listed below:

1. Place sincere emphasis on academics.
2. Develop communications with the academic community.

3. The assignment of an assistant coach as academic coordinator, with other coaches serving as academic coaches.

4. Academic Coaches – Time Management Program. (Each coach is assigned players and is responsible for monitoring their academic progress. Use of time management sheets and meeting individually with players weekly or bi-weekly.)

5. Letters of introduction to professors.

6. Monthly Grade Sheets – Each player must personally have his instructors fill out grade sheets and return them to the academic coordinator.

7. Mandatory Study Hall – Held Monday through Thursday, two hours each day, eight hours per-week. Mandatory for all freshmen, transfer students, and any player with less than a 2.75 GPA.

8. Effective use of tutors, counselors, advisors, and resource materials.

9. Effective use of summer school sessions. (Helpful in students maintaining credits and staying on course to graduate.)

10. Emphasis on class attendance and minimizing conflicts with classes as a result of practice, games, and travel.



NUMERICAL

No.	Name	Yr.	Pos.	Ht.	Wt.	Hometown/High School (Previous College)
00	Dan Stonkus	So.	6-9	245	C	Monmouth Junction, NJ/South Brunswick
1	Tyler Epps	Fr.	5-11	175	G	Charlottesville, VA/North Mecklenburg, NC
5	Courcy Magnus	Sr.	6-2	177	G	Plymouth Meeting, PA/Plymouth-Whitemarsh
10	Rey Jefferson	Fr.	6-2	190	G	Budd Lake, NJ/Morristown-Beard School
11	Paulius Skema	Fr.	6-8	204	F	Vilnius, Lithuania/Veritas Christian Academy, NC
12	Brendon Lyn	Fr.	5-9	175	G	Mt. Vernon, NY/Episcopal, VA
13	Jheryl Wilson	Fr.	6-3	185	G	Irvington, NJ/St. Benedict's Prep
20	Johnathan Dixon	Jr.	6-4	215	F	North Brunswick, NJ/Lawrenceville Prep
21	Justin Garriss	Fr.	6-3	190	G	Ledgewood, NJ/Delbarton School
23	Anthony Collier	Fr.	6-4	175	G	Farmington, MI/Southfield-Lathrup
24	Kraig Peters	Sr.	6-4	191	G	Mt. Laurel, NJ/Lenape
32	Kyle Edwards	Jr.	6-6	225	F	Fayetteville, GA/Christian Heritage School, CT
33	Brett Johnson	Sr.	6-4	213	F	Pennsauken, NJ/Roman Catholic, Philadelphia
35	Nesho Milosevic	Jr.	6-8	245	F	Bar, Montenegro/(Sierra College, CA)
15	Gary Garriss *	Jr.	6-5	205	F	Ledgewood, NJ/The Hun School (American U)

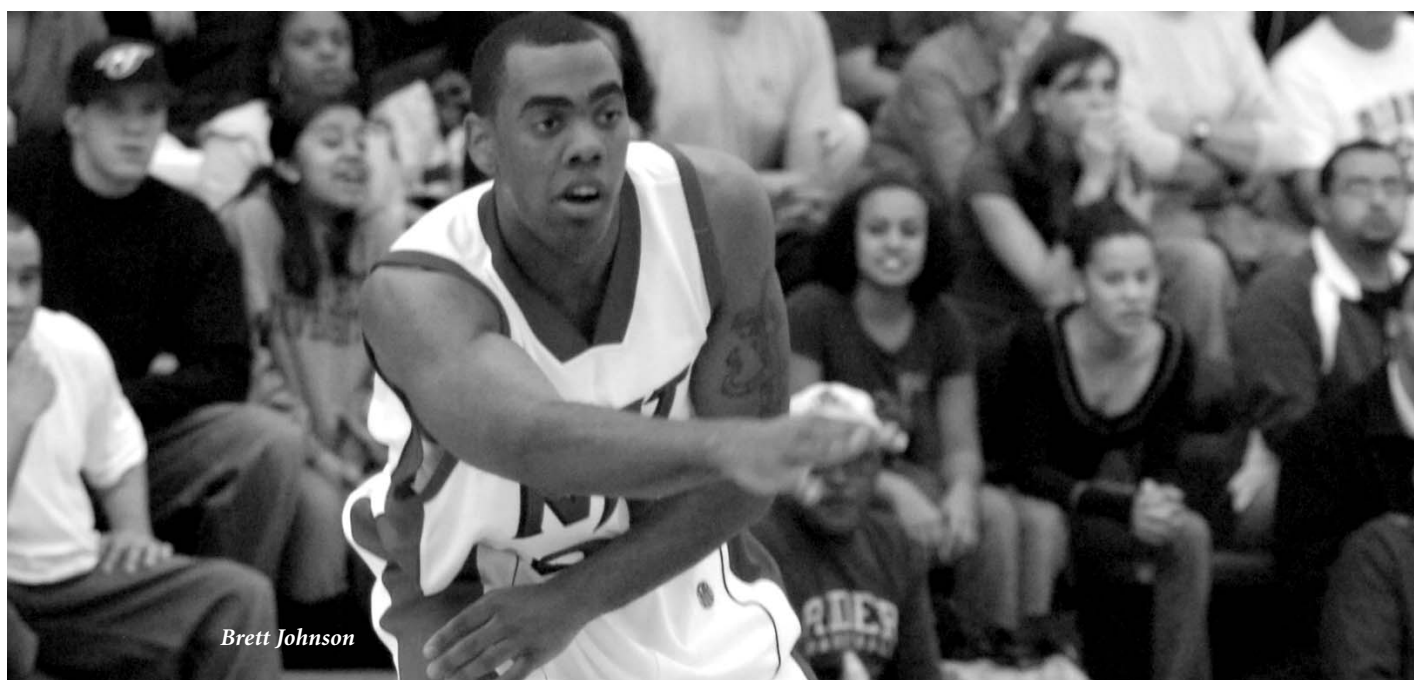
ALPHABETICAL

No.	Name	Yr.	Pos.	Ht.	Wt.	Hometown/High School (Previous College)
23	Anthony Collier	Fr.	6-4	175	G	Farmington, MI/Southfield-Lathrup
20	Johnathan Dixon	Jr.	6-4	215	F	North Brunswick, NJ/Lawrenceville Prep
32	Kyle Edwards	Jr.	6-6	225	F	Fayetteville, GA/Christian Heritage School, CT
1	Tyler Epps	Fr.	5-11	175	G	Charlottesville, VA/North Mecklenburg, NC
15	Gary Garriss *	Jr.	6-5	205	F	Ledgewood, NJ/The Hun School (American U)
21	Justin Garriss	Fr.	6-3	190	G	Ledgewood, NJ/Delbarton School
10	Rey Jefferson	Fr.	6-2	100	G	Budd Lake, NJ/Morristown-Beard School
33	Brett Johnson	Sr.	6-4	213	F	Pennsauken, NJ/Roman Catholic, Philadelphia
12	Brendon Lyn	Fr.	5-9	175	G	Mt. Vernon, NY/Episcopal, VA
5	Courcy Magnus	Sr.	6-2	177	G	Plymouth Meeting, PA/Plymouth-Whitemarsh
35	Nesho Milosevic	Jr.	6-8	245	F	Bar, Montenegro/(Sierra College, CA)
24	Kraig Peters	Sr.	6-4	191	G	Mt. Laurel, NJ/Lenape
11	Paulius Skema	Fr.	6-8	204	F	Vilnius, Lithuania/Veritas Christian Academy, NC
00	Dan Stonkus	So.	6-9	245	C	Monmouth Junction, NJ/South Brunswick
13	Jheryl Wilson	Fr.	6-3	185	G	Irvington, NJ/St. Benedict's Prep

Head Coach: Jim Casciano (Drexel '77)

Assistant Coaches: Wendell Alexis, Stephen Brodzinski, David Grande

*—Gary Garriss is ineligible for competition in 2007-08 under NCAA transfer regulations. He will be eligible in 2008-09 with junior playing eligibility.



Brett Johnson

With over 20 years as a college head coach, Jim Casciano has seen too much to make a lot of bold predictions about his team as it prepares for its second season of Division I competition. He knows it will take time to get where he wants his team to go.

"When you go through rebuilding, you have to start at some point," he said. "Because we do it the traditional way (recruiting and developing high school seniors) we're at that point in terms of being a Division I program.

"I think we're a better team. We're more versatile. We can run more and shoot better and we can play nine players a game without a big drop off when we go to the bench."

Still, he is cautious. "You can't say we've turned the corner until we actually do," said Casciano. "This is more like the beginning of turning the corner.

"The freshmen are learning quickly and the team has bonded on and off the court. They come to play every day and they demand a lot of themselves and they demand a lot of each other."

Casciano turned around three different downtrodden college programs before coming to NJIT. "I've seen this before," said the coach. "You can see the pieces of the puzzle starting to make sense."

Entering 2006-07, no Highlanders had ever played in a Division I game. This year, NJIT returns five players, including three starters, who played in the Division I debut.

The Highlanders will integrate the returnees with as many six freshmen. Indeed, NJIT will feature one of the youngest backcourts in the country. Every pure guard but one, senior Courcy Magnus, is playing college basketball for the first time.

Some of the youth at guard is balanced by the fact that the freshmen are part of the second class recruited strictly for Division I competition. "We've improved the backcourt in terms of depth, shooting, basketball IQ and toughness," said Casciano. "But there's no substitute for experience."

NJIT's first season of Division I competition began as if it had sprung from Casciano's most optimistic dreams.

The season opened at Manhattan, the defending Metro Atlantic Athletic Conference regular season champion. Trailing by 14 early in the second half, the Highlanders rallied to turn the game into a nail-biter over the last 12 minutes. NJIT went ahead for good, 56-55, on senior Clayton Barker's driving layup with 31 seconds left.

Following up the eyebrow-raising season opener, the Highlanders made the area basketball community take notice with a 63-52 win over Rider in NJIT's first home game.

NJIT awakened from the dream in the next game at Columbia and the Highlanders did not win again until January. But the season never became a nightmare, as NJIT remained competitive in most of the remaining contests.

Most of this year's proven talent resides in the frontcourt, where all three starters return. Kraig Peters, the top returning scorer (11 ppg), is on the wing, while the top rebounder, Nesho Milosevic is back on the inside after averaging a team-best 7 rpg and scoring 8.3 ppg. Dan Stonkus (41 blocked shots, 5.8 rpg, 5 ppg) is back in the middle.

Peters combines a strong work ethic with legitimate Division I skills, which points to further improvement. Having produced 18 double-figure scoring games a year ago, he aims to bump that consistency to a higher level, upping his scoring average.

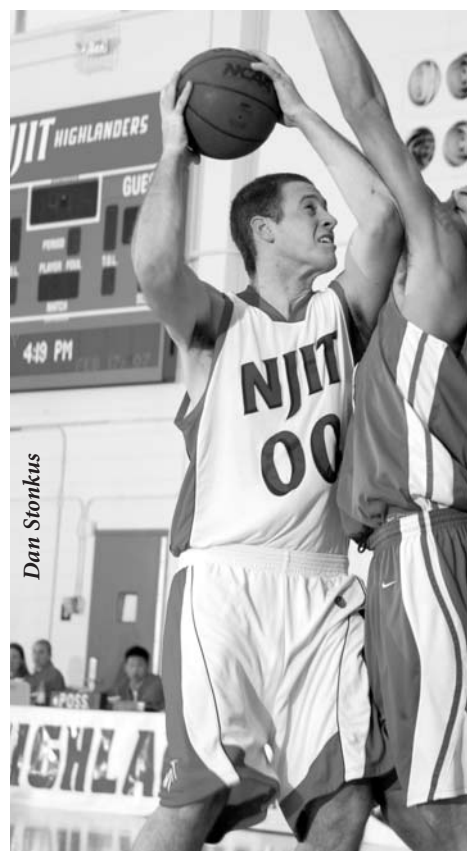
Milosevic, from the Eastern European Republic of Montenegro, first came to the United States in 2005 and played a season of junior college ball at Sierra College in California.

He made a smashing debut for the Highlanders, coming off the bench for 12 points and 11 rebounds in the upset of Manhattan. He went on to post 10 double-figure scoring games and seven double-figure rebounding games. "He can be a consistent double-double for us," said Casciano.

Stonkus, at 6-9, 245, matched up with just about every post player NJIT faced in his



Kraig Peters



Dan Stonkus

freshman season. Having redshirted his first year in college, Stonkus has improved steadily. "We're definitely a different team for the better when he's in," said Casciano. "If he stays on the floor and becomes more assertive on offense, he's another player who can give us double-doubles."

NJIT rotated Milosevic, Stonkus and then-senior Marc Milbourne Swan in the two interior spots a year ago. Milbourne Swan is gone, but the Highlanders have two more options this season in freshman Paulius Skema and junior Kyle Edwards.

Nesho Milosevic



A former age group national player in Lithuania, Skema came to the United States last year and attended prep school, where he received substantial mid-major Division I recruiting interest. He averaged 16 points and 9 rebounds for Veritas Christian, which faced top prep teams.

Edwards, out all last year due to injury, is 6-6, 225, with fluid athletic ability. "Kyle could make a difference," said Casciano. "He runs like a perimeter player and he can play inside or out. We didn't have that type of player last year."

Seniors Brett Johnson and Courcy Magnus are back. Johnson, a good defender, is a small forward. Magnus, who has been both a starter and reserve at guard, can make shots from the perimeter.

The rest of the active roster is made up of freshman guards. Tyler Epps, Justin Garris, Brendon Lyn and Jheryl Wilson are competing for starting roles and all are likely to be in the regular playing rotation.

Lyn, Wilson and Epps are all involved at the point, while Epps and Wilson could slide over to the two guard spot, joining Garris.

Lyn, a pure point guard brings speed, quickness and court sense that has raised the team's energy level. Wilson was a combo guard at nearby St. Benedict's Prep, which ranked fifth nationally and second in the East in USA Today's final polls during his senior year.

Like Lyn, Wilson has the toughness that comes with having grown up in a basketball scene where there is no room for the word "casual". Lyn cut his teeth in Mt. Vernon, NY, which borders the Bronx. Wilson came up in an area that is home to perennial national high school powers St. Benedict's, St. Anthony's of Jersey City and St. Patrick's of Elizabeth, all of whom produce multiple major Division I prospects every year.

Epps, too, comes from a great tradition, having starred at North Mecklenburg High near Charlotte, NC. North Meck had five alumni active in Division I ball in 2006-07. Epps is a good shooter to go with his strength, quickness and high basketball IQ.

Garris, a gifted athlete, likely has his best basketball ahead. At 6-3, he can fill a role similar to the one being played by Highlander senior Kraig Peters.

Walk-on Rey Jefferson, who had a fine high school career, is also on hand. Another walk-on, Anthony Collier is expected to redshirt.

Johnathan Dixon, in his third year at NJIT, is an injury-related question mark. He was hurt during his freshman season, missed all of 2006-07 and has not practiced this preseason.

"Our expectations for the season are higher (than 2006-07), but tempered," said Casciano.

"The schedule is probably tougher, but we still want to win more games."

The increased demands will be clear in game two, when the Highlanders fly to Seattle to take on Washington in the opening round of the Dick's Sporting Goods NIT Season Tip-Off tournament on November 13.

"Playing in the NIT is definitely an honor," said Casciano. "It's going to be a special experience playing a perennial top 30 team on its home court. But that's a tall order for any team."

Not much later (December 6), the Highlanders will host the first of their four games in the new Prudential Center, the downtown Newark home of the NHL New Jersey Devils. The Highlanders will entertain Army, Rutgers, Cornell and Texas-Pan American at "The Rock" in December and January home games.

On January 5, NJIT will visit one of college basketball's most famed sites, the Palestra, for a game in Philadelphia against Penn.

With so many new things—the NIT Season Tip-Off, hosting games in the Prudential Center and playing in the historic Palestra—the Highlanders are set for a season Division I season as compelling as the first. "Our team and coaches are looking forward to every one of these experiences," said the coach.

Courcy Magnus



#24 Kraig PETERS



*Senior
Guard
6-4
191
Mt. Laurel, NJ,
Lenape HS*

Team captain ... combines high energy and quickness with a good shooting touch and is a proven player ... works hard in the weight room and on individual skill development. ... poised to become NJIT's 21st 1,000-point career scorer (needs 162). ... ranks 9th all-time in three-pointers made and 6th in attempts.

Jim Casciano on Peters: "He proved last year that he can play at this level. He was our second-leading scorer last year and he's our top returning scorer, so he'll be more in the spotlight. He should increase his points per game and field goal percentage if he stays within himself. If he does that, he's a good player."

2006-07: Made a fine adjustment to Division I, averaging 11 ppg in DI after netting 11.7 ppg in DII the year before. He improved his 3-point and FT percentages and reached personal game highs in

rebounds, assists and blocks. ... all-tournament at both the Tyler Ugolyn Columbia Classic and UCF Holiday Classic. ... led NJIT scorers 12 times ... scored in double figures 18 times (high of 20 vs. James Madison in the UCF Classic, 12/30). ... scored 18 each vs. Saint Peter's (11/18) and La Salle (1/16). ... career-high 9 rebounds in home-opening win over Rider (11/14).

2005-06: One of two who started all 27 games ... 3rd on the team at 11.7 ppg and shot .705 (67-95) on FTs ... career-high 23 pts. vs. Mansfield (12/30/05). ... Team scoring leader in four games and NJIT was 3-1 in those games.

2004-05: Appeared in all 28 games (20 starts) ... averaged 7.3 ppg (4th) and 3.3 rpg ... shot 80 pct. from the foul line.

Prior to NJIT: Won the Group 4 (largest schools) New Jersey championship as a senior at Lenape under coach Bill Lange, . played AAU ball for coach Earl Pearsall with Youth Interlock Society.

Personal: Kraig Howard Peters ... son of Howard Peters and Karen Solomon-Peters ... management major and dean's list student. ... born 5/28/86.

CAREER HIGHS

Points: 23 vs. Mansfield – 12/30/05

Rebounds: 9 vs. Rider – 11/14/06

Assists: 5 vs. IPFW – 2/17/07

Blocks: 3 vs. Navy – 1/2/07

Steals: 4 vs. Nyack – 1/31/06; 4 at Dominican (NY) – 1/18/05

3-pointers: 5 vs. Mansfield – 12/30/05

Minutes: 41 vs. Nyack – 12/10/05

Yr	GP/GS	FG-FGA	%	3FG-A	%	FT-FA	%	Reb-Avg.	Pts-Avg.	A-Blk-Stl
2004-05	28/20	75-184	.408	9-40	.225	44-55	.800	92-3.3	203-7.3	44-6-25
2005-06	27/27	107-256	.418	36-113	.319	67-95	.705	122-4.5	317-11.7	56-8-21
2006-07	29/28	108-289	.374	50-145	.345	52-69	.754	104-3.6	318-11.0	38-10-29
Total	84/75	290-729	.398	95-298	.319	163-219	.744	318-3.8	838-10.0	138-24-75



#5 Courcy
MAGNUS

Senior
Guard
6-2
177
Plymouth
Meeting, PA/
Plymouth-
Whitemarsh HS

First name is pronounced COR-see ... Veteran shooting guard enters his fourth year in the program having filled both starting and substitute roles in previous seasons.

Jim Casciano on Magnus: "We want Courcy to give us stability, leadership and scoring at the two spot. He could be a catalyst to come in and give us a lift with some shots off the bench, which he did in some games last year."

2006-07: Appeared in every game but three averaging 10.7 minutes and 2.7 ppg ... scored 11 against both Central Florida (12/29) and North Dakota State (3/1). Made all three three-point tries vs. UCF. ... team-best .778 free throw percentage (21-27).

2005-06: One of two players (with Kraig Peters) who started all 27 games. ... averaged 31.8 minutes ... shot a team best .357 from three-point range ... shot 5-for-6 (.833) from behind the arc against Felician on 1/17/06 ... Was fourth on the team averaging 9.8 ppg, which more than doubled his 4.6 ppg the previous season.

2004-05: Appeared in all 28 games as a freshman, starting 10 ... averaged 16.3 minutes per game ... scored a game high 17 points vs. Dominican on 2/22/05 in a game that included five made three-pointers.

Prior to NJIT: Times Herald Player of the Year for coach Jim D'Onofrio at Plymouth-Whitemarsh High ... two-time team MVP ... 1,000-point scorer ... named Player of the Week by three different newspapers ... all-area in soccer.

Personal: Courcy Dane Magnus ... son of Andrew and Betty Jane Magnus ... business management major. ... born 11/5/85 in Norristown, PA.

CAREER HIGHS

Points: 20 vs. Felician – 1/17/06
Rebounds: 8 vs. Wilmington – 1/24/06
Assists: 6 vs. Wilmington – 1/10/06
Blocks: 1 - nine times
Steals: 4 – three times
3-pointers: 6 – three times
Minutes: 40 vs. Felician – 1/17/06

Yr	GP/GS	FG-FGA	%	3FG-A	%	FT-FA	%	Reb-Avg.	Pts-Avg.	A-Blk-Stl
2004-05	28/10	46-137	.336	28-87	.322	9-14	.643	52-1.9	129-4.6	45-3-18
2005-06	27/27	87-228	.382	51-143	.357	39-52	.750	103-3.8	264-9.8	71-5-39
2006-07	26/0	18-63	.286	12-42	.286	21-27	.778	33-1.3	69-2.7	26-1-14
Total	81/37	151-428	.353	91-272	.335	69-93	.742	183-2.3	462-5.7	142-9-71

#33 Brett JOHNSON



*Senior
Forward
6-4
213
Pennsauken, NJ/
Roman Catholic
HS (Philadelphia)*

One of three four-year seniors on the team along with Courcy Magnus and Kraig Peters. He will look to come back from an injury that limited him to 16 appearances a season ago.

Jim Casciano on Johnson: "He's a candidate at small forward and he gives us senior experience. He's a good defender and if he's healthy he could be in the mix."

2006-07: Saw action in 16 games—none after January 23 (injury). ... averaged 6.5 minutes, 1.5 points per game. ... logged double-figure minutes three times with a high of 15 minutes against Navy, when he scored a season-high 5 points and matched his season-best 4 rebounds (1/2). Also grabbed four boards vs. Lafayette (12/4).

2005-06: Appeared in all 27 games (two starts) ... averaged 20.6 minutes, 2.4 ppg and 2.5 rpg.

2004-05: Played in all 28 games with 13 starts ... averaged 25.5 minutes, 6.3 points per game ... second on the team in total rebounds (126) and rpg (4.5) ... second in field goal accuracy (.463) ... made four of his 11 three-point tries.

Prior to NJIT: South Jersey resident crossed the Delaware River to play at perennial Philadelphia power Roman Catholic High School and was all-Catholic playing for veteran coach Dennis Seddon, as the team won a state championship ... played AAU for Youth Interlock Society.

Personal: Brett Lee Johnson ... son of Ronald Johnson and Diana Brandon Falana ... finance major ... born 10/15/85 in Marlton, NJ.



CAREER HIGHS

Points: 15 vs. St. Michael's – 11/20/04

Rebounds: 9 at Goldey-Beacom – 1/27/05

Assists: 5 vs. Philadelphia – 11/23/04

Blocks: 2 – three times

Steals: 3 vs. Bloomfield – 2/19/05; 3 at Rollins – 12/29/05

3-pointers: 5 vs. Goldey-Beacom – 12/2/04

Minutes: 44 vs. Philadelphia – 11/23/04

Yr	GP/GS	FG-FGA	%	3FG-A	%	FT-FA	%	Reb-Avg.	Pts-Avg.	A-Blk-Stl
2004-05	28/13	63-136	.463	4-11	.364	45-70	.643	126-4.5	175-6.3	30-12-33
2005-06	27/2	25-71	.352	1-8	.125	14-31	.452	68-2.5	65-2.4	17-9-21
2006-07	16/0	8-12	.667	0-0		8-14	.571	18-1.1	24-1.5	1-0-4
Total	71/15	96-219	.438	5-19	.263	67-115	.583	212-3.0	264-3.7	48-21-58

#20 Johnathan
DIXON*Junior**Forward**6-4**215**North Brunswick, NJ/Lawrenceville Prep*

Eyes a return after an injury redshirt year.

Jim Casciano on Dixon: "At this point (preseason), we don't know what we can expect. He was out all of last season and he hasn't been able to participate yet this year."

2006-07: Medical redshirt following preseason surgery.

2005-06: Appeared in 19 games off the bench ... contributed 2.6 points and 2.1 rebounds per game ... scored a career-high 12 points in 21 minutes against Bloomfield on 12/6/05.

Prior to NJIT: Scored over 1,000 points at Lawrenceville (NJ) Prep playing for coach Ronald Kane ... all-Prep, all-area and all-county as a senior ... all-county and all-area as a junior ... played AAU ball on the New Jersey Cyclones with NJIT teammate Dan Stonkus.

Personal: Johnathan Patrick Dixon ... known as 'JD' to his teammates and coaches. ... son of Frank Dixon and Doanna Patrick ... majoring in business management. ... born 6/2/1986.

CAREER HIGHS

Points: 12 vs. Bloomfield – 12/6/05

Rebounds: 8 vs. Molloy – 11/22/05

Assists: 3 vs. Holy Family – 12/1/05

Blocks: 1 vs. Bloomfield – 12/6/06; 1 vs. Molloy – 11/22/05

Steals: 2 vs. Holy Family – 12/1/05

3-pointers: 1 vs. Holy Family – 12/1/05; 1 vs. Wilmington – 2/14/05

Minutes: 25 vs. Holy Family – 12/1/05

Yr	GP/GS	FG-FGA	%	3FG-A	%	FT-FA	%	Reb-Avg.	Pts-Avg.	A-Blk-Stl
2005-06	19/0	19-57	.333	2-16	.125	9-15	.600	39-2.1	49-2.6	13-2-4
2006-07	Did not play—injured									

#32 Kyle EDWARDS



*Junior
Forward
6-6
225
Fayetteville, GA/
Christian
Heritage School
(CT)*

Will try to come back from a full season missed due to injury ... returned to school leaner and stronger than a year ago.

Jim Casciano on Edwards: “We expect him to contribute. He gives us depth and versatility and he can make a difference. He’s very athletic—he can jump and runs like a perimeter player—and he’s capable of scoring inside and out.”

2006-07: Medical redshirt following pre-season surgery

2005-06: Played with a balky knee, but showed improvement over his rookie year. ... played in 22 games, starting 15 ... averaged 4.4 points per game ... led the team in blocked shots with (17), had a career-high five blocked shots against Post on 2/25/06 ... third on the team in total rebounds (107) and rpg (4.9).

2004-05: Started in 13 games as a freshman ... averaged 15.7 minutes a game, but led the team in blocked shots, with 25 ... shot 54 percent from the foul line and 41 percent from the field.

Prior to NJIT: Raised in Trumbull, CT, he was team MVP for coach John Naeher at Christian Heritage ... was a member of Norwalk Blue Blazers and Connecticut Magic AAU squads ... also played tennis and ascended to No. 11 on USTA New England regional rankings for his age group ... earned school’s Most Improved Student award.

Personal: Kyle Michael Edwards ... son of Keith and Yvonne Edwards ... business major. ... born 9/4/1986 in Norwalk, CT.



CAREER HIGHS

Points: 12 vs. Philadelphia – 2/1/05; 12 vs. Wilmington – 1/10/06
Rebounds: 10 vs. Bryant – 12/29/04; 10 vs. Philadelphia – 1/12/06
Assists: 2 – four times
Blocks: 5 vs. Post – 2/25/06
Steals: 2 vs. Bloomfield – 1/15/05
3-pointers: 3 vs. Franklin Pierce – 12/30/05
Minutes: 33 vs. Dominican – 1/21/06

Yr	GP/GS	FG-FGA	%	3FG-A	%	FT-FA	%	Reb-Avg.	Pts-Avg.	A-Blk-Stl
2004-05	28/13	30-73	.411	0-0	.000	20-37	.541	83-3.0	80-2.9	13-25-7
2005-06	22/15	41-80	.513	0-2	.000	15-33	.455	107-4.9	97-4.4	6-17-5
2006-07	Did not play—injured									
Total	50/28	71-113	.464	0-2	.000	35-70	.500	190-3.8	177-3.5	19-42-12

#35 Nesho
MILOSEVIC

*Junior
Forward
6-8
145
Bar, Montenegro/
Sierra College
(CA)*

Name is pronounced NEH-sho mill-OH-se-VICH ... talented big man has added 30 pounds since arriving at NJIT in 2006. ... as with most good rebounders, effort is a key to his success. ... quick offensive rebounder who can take similar-sized defenders off the dribble and also has a good jump shot.

Jim Casciano on Milosevic: "He's a key player—bigger and stronger and he seems more confident, having spent another year in the United States, a year in Division I and a year in our system. He can be a consistent double-double for us."

2006-07: Named to the Division I Independent Newcomer 1st team (3-time Division I Newcomer of the Week) and NJIT's Male Newcomer of the Year (entire

athletic program). ... led the Highlanders with 7 rpg ... 10 double-figure scoring games and seven double-figure rebound games, with four double-doubles. ... high of 15 rebounds (2/17 vs. IPFW), two games with 14, plus 10 vs. St. John's of the Big East (12/21). ... NJIT's leading rebounder in 17 games, leading scorer twice ... 3rd on the team with 8.3 ppg and 2nd with 26 blocked shots. ... double-double with 12 points and 11 rebounds in NJIT's first Division I game, an upset over defending MAAC champion Manhattan. ... posted personal-best 21 points, with 10 rebounds at Longwood in NJIT's last win of the season (2/19). Shot 8-11 from the field and 5-5 at the line.

Prior to NJIT: Played one season in junior college at Sierra College in CA. ... Played club ball for "Buducnost", Podgorica. Club won the U18 and U16 championships of Serbia and Montenegro and Montenegro alone. ... secondary school was Slobodan Skerovic.

Personal: Nemanja Milosevic ... son of Nebojsa and Snezana Milosevic. ... older brother, Steven, plays professionally for "Buducnost" from Montenegro. ... father played professionally in Europe for 20 years and younger brother, Milos, plays in high school. ... civil engineering major. born 7/4/87 in Cetinje, Montenegro.

CAREER HIGHS

Points: 21 vs. Longwood – 2/19/07

Rebounds: 15 vs. IPFW – 2/17/07

Assists: 3 vs. Longwood – 2/19/07

Blocks: 3 vs. Columbia – 11/17/06; vs. Army – 12/6/06; vs. Texas-Pan Am – 2/3/07

Steals: 2 vs. Central Florida – 12/29/06

3-pointers: 1 vs. Rider – 11/14/06; 1 vs. Saint Peter's – 11/18/06

Minutes: 37 vs. South Dakota State – 3/3/07

Yr	GP/GS	FG-FGA	%	3FG-A	%	FT-FA	%	Reb-Avg.	Pts-Avg.	A-Blk-Stl
2006-07	29/17	98-215	.456	2-25	.080	42-77	.545	202-7.0	240-8.3	22-26-12

#00 Dan STONKUS



*Sophomore
Center
6-9
245
Monmouth
Junction, NJ/
South Brunswick
HS*

Good post defender who is an essential part of NJIT's defense and rebounding. ... Offense remains a work in progress, but he improved as his rookie season progressed, reaching at least eight points eight times in the last 17 games.

Jim Casciano on Stonkus: "He's a solid kid in the middle who can defend the other team's low post player and gives our other players a comfort level that he's back there. We need him to be more assertive on the offensive end, but he showed improvement last year and we think he's someone who can produce double-doubles.

2006-07: Ranked second among Division I Independents with 1.4 blocks per game on a team-leading 41 total blocked shots. ... played all 29 games (28 starts, only exception was Senior Night) ... career-high 14 points vs. North Dakota State (2/10) and 5 blocks against Longwood (1/10). ... season-high 3 steals in the season-opening upset at defending MAAC regular season champion Manhattan (11/11) ... scored at least 8 points in eight of the last 17 after reaching 8 points just twice in the first 12 contests ... made 16 of his last 22 free throws (.727) after starting out 13-30 (.433). Enters '07-'08 having made his last eight free throws.

2005-06: Redshirted to preserve four years of Division I playing eligibility.

Prior to NJIT: First-team all-Red Division and second-team all-conference for coach Dave Turco at South Brunswick HS ... school career blocked shots leader playing on teams that won two division titles ... AAU teammate with current Highlander Johnathan Dixon on the New Jersey Cyclones.

Personal: Daniel A. Stonkus. ... Son of Alex and Lisa Stonkus ... mechanical engineering major. ... born 2/25/87 in New Brunswick, NJ.



CAREER HIGHS

Points: 14 vs. North Dakota State – 2/10/07
Rebounds: 11 vs. Navy – 1/2/07; 11 vs. IPFW – 1/13/07
Assists: 2 vs. Army – 12/6/06
Blocks: 5 vs. Longwood – 1/10/07
Steals: 3 vs. Manhattan – 11/11/06; vs. Saint Peter's – 11/18/06
3-pointers: none
Minutes: 42 vs. Navy – 1/2/07

Yr	GP/GS	FG-FGA	%	3FG-A	%	FT-FA	%	Reb-Avg.	Pts-Avg.	A-Blk-Stl
2006-07	29/28	58-110	.527	0-1	.000	29-52	.558	167-5.8	145-5.0	12-41-17

#1 Tyler EPPS



*Freshman
Guard
5-11
175
Charlottesville, VA/
North Mecklenburg HS (NC)*

Quick, strong guard comes to NJIT with Division I-ready physical attributes and a strong winning winning background.

Jim Casciano on Epps: “He is a combo guard and now (preseason) we’re looking to plug him in at the two. He has good strength and he’s an excellent outside shooter. We like the fact that he comes from a (high school) program with a history of being a big winner. He’s a tough-minded kid who plays aggressively, so we expect him to contribute for us right away.”

Prior to NJIT: Played in one of the strongest high school programs in basketball-crazed North Carolina. Played for coach Duane Lewis at North Mecklenburg HS, located in the Charlotte area. North Meck was state 4A champion in 2005 and runner-up in 2006 and had five alumni active in NCAA Division I basketball in 2006-07 ... averaged 16 points per game as a senior and the Charlotte Observer 2006-07 Lake Norman-area Player of the Year. ...As a junior, he was the MVP when his squad won the North Carolina 4A West Regional championship game en route to its return visit to the state title game. ... made numerous all-conference teams in his career, including his sophomore year, which he spent at Charlottesville High School in Virginia, averaging 12 points per game.

Personal: Tyler F. Epps. ... history major ... born 8/20/88 in Dayton, OH.

#11 Paulius SKEMA



*Freshman
Forward
6-8
204
Vilnius, Lithuania/
Veritas Christian Academy (NC)*

First name is pronounced as it is spelled. Last name is pronounced SKEE-ma ... Comes to NJIT having played one season of high school basketball in the United States ... received strong recruiting interest from mid-major Division I college programs before signing an early National Letter of Intent with NJIT

Jim Casciano on Skema: “He’s a tough competitor and very good fundamentally. He has an excellent face-up game and he can score out to about 17 feet. He’s becoming more comfortable with his back to the basket and he’s going to help us.”

Prior to NJIT: Averaged 16 points and 9 rebounds in 30 games at Veritas Christian Academy near Asheville, NC. At Veritas he competed against some of the top prep school basketball teams in the country ... national all-tournament at the National Association of Christian Athletes tourney, where he scored 10 in the title game ... a member of his age group national team in Lithuania, which has one of Europe’s richest basketball traditions. In 2004, he played for Lithuania’s under-16 national team that finished 3rd in the European championships held in Greece. ... averaged 3.3 points and 4.4 rebounds in about 16 minutes a game and appeared in all eight games in the international tournament ... scored 10 points against the Republic of Georgia and 7 against Turkey. ...His rebounding high was 7 against Slovenia and he grabbed 6 boards each against Italy and Turkey.

Personal: Paulius Skema ... son of Loreta and Raimundas Skema, who are both physicians. His older sister, Laura, is a student at nearby Caldwell College ... business management major ... born 3/17/88 in Kaunas, Lithuania.

#12 Brendon LYN



*Freshman
Point Guard
5-9
175
Mt. Vernon, NY/
Episcopal HS (VA)*

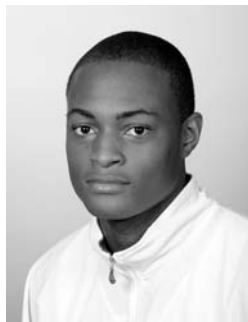
Pure point guard who has honed his skills in New York, Washington, DC, and Philadelphia.

Jim Casciano on Lyn: “He’s a prototypical New York City point guard (his hometown, Mt. Vernon, NY, borders the Bronx). He’s smart and tough and he gives us the quickness to push the ball. He’s also a good on-the-ball defender and he’ll compete for important minutes right away.”

Prior to NJIT: Attending the prestigious Episcopal High School in Alexandria, VA, Lyn was honored on the 2006 Washington Post all-Metro team, as well as making all-Interstate Athletic Conference ... his athletic ability was underlined in track, where he won the IAC sprint championships at 100 (11.3 seconds) and 200 meters (22.83) ...he was also one of four runners on the Episcopal 4 x 400 relay team that captured 1st place in the Prep School Boys division in 2005 at the famed Penn Relays. ... also played football at Episcopal ... in his postgrad prep season at Rise Academy in Philadelphia, Lyn was matched against some of the top postgraduate prep school talent in the country and he did well, averaging 10.5 points, 5 assists and 3 steals a game. Sam Rines, the Rise coach, was the AAU summer coach for Kobe Bryant and Richard Hamilton, among others. Said Rines of Lyn: “He held his own against every top point guard in the country. I expect Brendon to help NJIT become a quality and respected Division I program.”

Personal: Brendon George Paul Lyn ... son of George and April Lyn ... management major ... born 8/30/87 in Brooklyn, NY ... resides in Mt. Vernon, a city in Westchester County, NY, bordering the Bronx.

#13 Jheryl WILSON



*Freshman
Guard
6-3
185
Irvington, NJ/ St. Benedict's Prep*

First name is pronounced ja-RELL ... his signing as a local player who contributed on one of the top high school teams in the country represents a plus in NJIT’s recruiting.

Jim Casciano on Wilson: “He’s a combo guard who we’re looking at as a point in preseason. He’s a savvy, tough player who can create off the dribble. He’s another good on-the-ball defender and he’s in the mix for playing time right away. He comes from an excellent high school program and we think that kind of winning attitude will help us.”

Prior to NJIT: Senior captain for St. Benedict’s Prep, located a couple of minutes drive from NJIT in Newark. ... the Grey Bees finished 2006-07 ranked 5th among the nation’s high school teams in the USA Today Top 25. Benedict’s, which finished 24-1, was ranked second in the East by USA Today. Playing for coach Danny Hurley, Wilson was a four-year player on the varsity, during which time he teamed with at least 15 players who went on to compete in Division I basketball, plus JR Smith, who jumped directly from high school into the NBA. ... high honor roll student ... playing in a star-studded lineup, averaged 6.7 ppg, with a high of 21 ... connected on 20 of 40 three-point attempts. ... NJHoops selected him as one of the top 50 seniors in the state prior to the 2006-07 season.

Personal: Edward Jheryl Wilson ... son of Edward and Patricia Wilson. ... Edward was Jheryl’s AAU coach with the GYM (Gifted Young Minds) club. ... the family resides in Irvington, NJ ... communications major ... born 7/19/89 in Newark.

#15 Gary GARRIS



*Junior
Forward
6-5
205
Ledgewood, NJ/Hun School*

A strong, athletic forward who slashes to the basket and is a good finisher ... having played two seasons of Division I basketball as a reserve for American University in Washington, DC, he is eligible for practice, but not competition, at NJIT in 2007-08. He has two remaining years of eligibility for competition, starting in 2008-09.

Jim Casciano on Gary Garris: "Our biggest regret is that he can't play for us right away. He brings a level of maturity, basketball IQ and athleticism that we've needed. He will make a difference in our program."

Prior to NJIT: Played two seasons of Division I basketball at American U, which won 28 games in his two seasons. His career highs of 4 points and 3 rebounds came as a freshman against George Mason, which would reach the 2006 Final Four. He also had 3 rebounds vs. powerful Maryland. ... before AU, spent a postgrad prep year in the strong program at the Hun School in Princeton, NJ, where he averaged 10 ppg. ... high school star at Morristown-Beard and was a Top 20 all-star at the prestigious Eastern Invitational Camp in the summer between his junior and senior years.

Personal: Gary Wayne Garris. ... son of Gary and Yolanda Garris. ... will be a teammate of his younger brother, Justin, freshman guard on the Highlanders. The brothers will practice together this season and will team in Division I competition the following year. ... born 6/7/86 in Westwood, NJ.

CAREER HIGHS

Points: 4 vs. George Mason – 12/5/05

Rebounds: 3 vs. Maryland – 12/23/05; vs. George Mason – 12/5/05

Assists: none

Blocks: 1 – two times

Steals: 1 – three times

3-pointers: 1 – two times

Minutes: 10 vs. George Mason – 12/5/05

Yr	GP/GS	FGA	%	3FG-A	%	FT-FA	%	Reb-Avg.	Pts-Avg.	A-Blk-Stl
2005-06	9/0	4-12	.333	2-5	.400	1-5	.200	6-0.7	11-1.2	0-2-1
2006-07	6/0	1-8	.125	0-5	.000	0-0	.000	4-0.7	2-0.3	0-0-2
Total	15/0	5-20	.250	2-10	.200	1-5	.200	10-0.7	13-0.9	0-2-3

Note: All stats at American University

#21 Justin GARRIS



*Freshman
Guard
6-3
190
Ledgewood, NJ/Delbarton School*

Athletic wing player whose best basketball may be ahead of him.

Jim Casciano on Justin Garris: "Justin is as athletic as anyone we have and he'll be a two/three for us. He has to work on being more consistent, but we expect big things from him in his career and we expect he will contribute right away."

Prior to NJIT: Top 20 all-star at the highly-regarded Eastern Invitational Camp the summer before his senior year ... at Delbarton School in Morristown, NJ, averaged 11.2 ppg and was a second-team Daily Record all-area pick as a junior. ... The Star-Ledger named Garris on its all-Morris County second team after he helped Delbarton to a 22-6 record and the Morris County Tournament crown. ... repeated as a 2nd-team all-Morris pick as a senior and scored 19 points as the leading scorer in the annual Morris-Sussex all-star game ... scored a career-high 33 points in the quarterfinal of the 2007 North Jersey Non-Public A Tournament. ... performed well in the high-caliber Rutgers summer college league, producing multiple double-figure scoring and rebounding games before his freshman season at NJIT ... qualified for NJ Parochial state track and field championships in both sprints and jumps as early as his freshman and sophomore years.

Personal: Justin E. Garris ... son of Gary and Yolanda Garris. ... will team with older brother, Gary, who transferred to NJ and will practice with the team before playing in games alongside Justin in 2008-09 ... business management major ... born 2/8/89 in Westwood, NJ.

#10 Rey JEFFERSON



*Freshman
Guard
6-2
190
Budd Lake, NJ/
Morristown-Beard School*

First name rhymes with Ray ... walk-on who had a distinguished high school career and will compete for playing time at guard.

Jim Casciano on Jefferson: "He's competing at point guard and he's a very coachable kid who could work his way into playing time."

Prior to NJIT: Two-time all-area (Daily Record), two-time all-Morris County and three-time all-Prep B, including first team as a senior (Star-Ledger) at Morristown-Beard School in Morristown, NJ, under coach Eddie Franz ... averaged 16.6 ppg at Morristown-Beard in 2006-07. High game was 29 and he topped 20 in 10 of 24 games. Added 5 rpg, 3.5 apg and 2.3 spg. ... played alongside NJIT classmate Justin Garris in the Morris-Sussex postseason all-star game and shares Morristown-Beard as a high school alma mater with Gary Garris, a another NJIT teammate who is Justin's older brother ... represented New Jersey in an all-star game in Harrisburg, PA ... AAU team was Morris County Bulls, coached by Gerald Radcliff. ... MetroHoops picked him 43rd in the Class of 2007 for New York City, New Jersey, Philadelphia and Delaware entering his senior year. ... also made all-county third team as a football kick return man.

Personal: Reynaud Emile Jefferson ... son of Keith and Vanesta Jefferson ... communications major ... born 3/17/89.

#23 Anthony COLLIER



*Freshman
Forward/Guard
6-4
175
Farmington, MI/
Southfield-Lathrup HS*

Walk-on swingman comes to NJIT from the northwest suburbs of Detroit.

Jim Casciano on Collier: "Anthony is a very good wing athlete who is making the transition to college and to this level of basketball. We expect that he'll redshirt this year to help in that transition."

Prior to NJIT: Played at Southfield-Lathrup High School in Lathrup Village, MI ... Lathrup was district and city champion ... all-league, league MVP, all-area and honorable mention all-state in basketball where he was coached by Mike Avery... all-league and honorable mention all-area in football and all-league track and field in the high jump.

Personal: Anthony De'Juan Collier ... son of Jenell Bailey ... resides in Farmington, MI ... management major ... born 7/5/89 in Detroit.

NJIT Combined Team Statistics All games

RECORD:	OVERALL	HOME	AWAY	NEUTRAL
ALL GAMES.....	(5-24)	(3-9)	(2-13)	(0-2)
CONFERENCE.....	(0-0)	(0-0)	(0-0)	(0-0)
NON-CONFERENCE.....	(5-24)	(3-9)	(2-13)	(0-2)

## Player	GP-GS	Min--Avg	---TOTAL---		---3-PTS---		----REBOUNDS----										PF	FO	A	TO	Blk	Stl	Pts	Avg
			FG-FGA	Pct	3FG-FGA	Pct	FT-FTA	Pct	Off	Def	Tot	Avg	PF	FO	A	TO	Blk	Stl	Pts	Avg				
01 BARKER, Clayton....	23-23	686 29.8	98-283	.346	38-140	.271	55-73	.753	15	48	63	2.7	76	6	73	91	1	31	289	12.6				
24 PETERS, Kraig.....	29-28	935 32.2	108-289	.374	50-145	.345	52-69	.754	21	83	104	3.6	70	2	38	78	10	29	318	11.0				
35 MILOSEVIC, Nesho...	29-17	751 25.9	98-215	.456	2-25	.080	42-77	.545	50	152	202	7.0	91	3	22	81	26	12	240	8.3				
44 MILBOURNE SWAN, Mar	27-13	541 20.0	73-121	.603	0-2	.000	74-106	.698	39	58	97	3.6	84	2	7	42	0	11	220	8.1				
10 ENGEL, Andrew.....	29-29	846 29.2	62-187	.332	24-95	.253	28-42	.667	14	46	60	2.1	86	4	69	74	4	31	176	6.1				
00 STONKUS, Dan.....	29-28	819 28.2	58-110	.527	0-1	.000	29-52	.558	45	122	167	5.8	95	3	12	50	41	17	145	5.0				
11 MANNING, Michael...	25-7	374 15.0	27-85	.318	16-58	.276	17-27	.630	6	32	38	1.5	16	0	37	33	2	17	87	3.5				
05 MAGNUS, Courcy....	26-0	277 10.7	18-63	.286	12-42	.286	21-27	.778	13	20	33	1.3	36	0	26	27	1	14	69	2.7				
23 STONE, Alex.....	27-0	317 11.7	17-48	.354	3-14	.214	20-36	.556	3	14	17	0.6	24	0	19	22	0	11	57	2.1				
33 JOHNSON, Brett.....	16-0	104 6.5	8-12	.667	0-0	.000	8-14	.571	6	12	18	1.1	6	0	1	7	0	4	24	1.5				
42 LEWIS, Dan.....	22-0	173 7.9	14-27	.519	2-7	.286	2-7	.286	9	15	24	1.1	15	0	6	3	0	3	32	1.5				
54 AHMED, Alat-Eldin..	1-0	2 2.0	0-0	.000	0-0	.000	0-1	.000	0	1	1	1.0	0	0	0	0	0	0	0	0.0				
TEAM.....									41	29	70	2.4	1			11								
Total.....	29	5825	581-1440	.403	147-529	.278	348-531	.655	262	632	894	30.8	600	20	310	519	85	180	1657	57.1				
Opponents.....	29	5825	680-1472	.462	211-551	.383	476-676	.704	265	701	966	33.3	514	-	442	415	82	240	2047	70.6				

TEAM STATISTICS	NJITM	OPP	DATE	OPPONENT	W/L	SCORE	ATTEND
SCORING.....	1657	2047	11/11/06	at Manhattan	W	56-55	1201
Points per game.....	57.1	70.6	11/14/06	RIDER	W	63-52	1025
Scoring margin.....	-13.4	-	11/17/06	at Columbia	L	60-73	-
FIELD GOALS-ATT.....	581-1440	680-1472	11/18/06	vs St. Peter's	L	57-75	-
Field goal pct.....	.403	.462	11/27/06	SIENA	L	40-64	623
3 POINT FG-ATT.....	147-529	211-551	11/29/06	at American	L	50-75	1225
3-point FG pct.....	.278	.383	12/1/06	MAINE	L	58-68	733
3-pt FG made per game..	5.1	7.3	12/4/06	LAFAYETTE	L	57-76	357
FREE THROWS-ATT.....	348-531	476-676	12-6-06	at Army	L	40-60	384
Free throw pct.....	.655	.704	12/11/06	STONY BROOK	L	61-65	411
REBOUNDS.....	894	966	12/21/06	at St. John's	L	50-68	4165
Rebounds per game.....	30.8	33.3	12/29/06	at Central Florida	L	63-75	1725
Rebounding margin.....	-2.5	-	12/30/06	vs James Madison	L	66-70	-
ASSISTS.....	310	442	1/2/07	NAVY	LOT	50-52	311
Assists per game.....	10.7	15.2	01/07/07	at Cornell	L	58-69	419
TURNOVERS.....	519	415	1/10/07	LONGWOOD	W	59-55	623
Turnovers per game.....	17.9	14.3	1/13/07	at IPFW	L	65-82	1046
Turnover margin.....	-3.6	-	01/16/07	at LaSalle	L	59-78	1530
Assist/turnover ratio..	0.6	1.1	01/23/07	at Siena	L	63-87	4362
STEALS.....	180	240	N2/1/07	at Utah Valley State	L	55-86	675
Steals per game.....	6.2	8.3	02-03-07	at Texas-Pan American	L	60-72	1100
BLOCKS.....	85	82	2/8/07	SOUTH DAKOTA STATE	W	67-62	278
Blocks per game.....	2.9	2.8	2/10/07	NORTH DAKOTA STATE	L	57-80	386
WINNING STREAK.....	0	-	2/17/07	IPFW	L	47-52	400
Home win streak.....	0	-	2/19/07	at Longwood	W	78-74	1119
ATTENDANCE.....	5790	21482	2/24/07	UTAH VALLEY STATE	L	47-77	343
Home games-Avg/Game...	12-482	15-1432	2/26/07	TEXAS-PAN AMERICAN	L	58-70	300
Neutral site-Avg/Game..	-	2-0	03/01/07	at North Dakota State	L	52-104	1311
			3/3/07	at South Dakota St.	L	61-71	1220
SCORE BY PERIODS:	1st	2nd	OT	Total			
NJIT.....	761	890	6	- 1657			
Opponents.....	977	1062	8	- 2047			

The NJIT basketball teams will have home games this season in the downtown Newark Prudential Center and on-campus in the newly-renovated gymnasium of the Estelle and Zoom Fleisher Athletic Center.

“The Rock”, located about a mile from NJIT’s University Heights campus, opened in October 2007 as the new home of the National Hockey League New Jersey Devils. Highlander basketball will play four dates—two stand-alone men’s games and two men’s women’s doubleheaders—in the 18,500-seat state-of-the-art arena with dates in December 2007 and January 2008.

The Fleisher Athletic Center gym, also home to NJIT’s volleyball teams, underwent renovation in the summer of 2006. Included in the makeover was installation of a new floor and baskets and a repositioning of the main playing court. The gym also got new lighting, a new sound system and new scoreboards, along with entirely new seating for more than 1,000 spectators after the first phase of renovation. Future plans include the addition of more seating, which will nearly double the seating

capacity, while maintaining the up close-feel that puts spectators close to the action and contributes to the homecourt advantage.

The back bay ‘C gym’ can be sectioned off from the main competition floor, making the facility useful for intramurals, physical education classes and campus recreation time, while being able to host multiple simultaneous events.

The NJIT basketball teams also have full access to the other facilities in the Fleisher Center. These include the fitness area (containing computer-controlled biking equipment, Cybex resistance units and an indoor track), a free-weight room, four racquetball courts (which can be converted for squash), a martial arts center and an aerobics dance studio.

A six-lane swimming pool in Fleisher Athletic Center is home to the NJIT men’s and women’s swimming teams, while the two varsity tennis squads play on the four outdoor lighted tennis courts behind Fleisher Athletic Center. The NJIT Campus Center houses six regulation bowling lanes.

Lubetkin Field, with its entrance a few feet from the entrance of the Fleisher Athletic Center, is a first-class venue for college soccer. Outfitted with SprinTurf artificial grass in the summer of 2004, Lubetkin Field also includes lighting for night contests, bleacher seating for more than 1,000 spectators, a press box and scoreboard. The installation of the new surface, a walking track and new landscaping was done at a cost of \$1.2 million.

Bears and Eagles Riverfront Stadium, opened in 1999 at a cost of \$30 million and with a seating capacity of 6,200, became the home of NJIT baseball in 2004. In a joint December 2005 press conference, New York Yankees manager Joe Torre was a featured speaker as NJIT and the Newark Bears announced a 10-year partnership that cemented the downtown stadium as the home of all Highlanders home games for the decade to come.

NJIT, which offers a growing list of club sports, also has a robust intramural program, which makes use of the numerous athletic facilities.



NEWARK: THE RENAISSANCE CITY

NJIT is located in the heart of New Jersey's largest city. A major urban center, Newark is a city on the move. Some 30,000 undergraduate, graduate and professional students attend classes in University Heights at the city's four public institutions of higher learning: NJIT, Rutgers-Newark, the University of Medicine and Dentistry of New Jersey, and Essex County College.



Attractions in Newark's revitalized downtown include:

- . The Newark Museum
- . New Jersey Performing Arts Center
- . The Newark Public Library
- . Symphony Hall
- . Branch Brook Park
- . Art galleries, restaurants, and shopping
- . An urban architectural laboratory
- . Professional minor league baseball (Newark Bears)
- . New Jersey Devils Hockey and other events at the Prudential Center

Above Left: New Jersey Performing Arts Center, located minutes from campus, is quickly becoming one of the state's more popular entertainment venues.

Above Right: Aerial view of downtown Newark.

Right: The Newark Museum, a staple in the revitalization efforts in the downtown Newark area.



NEWARK: NEW JERSEY'S COLLEGE TOWN

Adjacent to NJIT is the Newark campus of Rutgers University.

NJIT and Rutgers enjoy an exceptionally close and productive consortial relationship within the thriving University Heights section of Newark. NJIT and Rutgers students have library privileges at both campuses. NJIT students may also enrich their educational experience by enrolling in Rutgers-Newark courses and in full degree programs in disciplines not offered at NJIT, such as art, music, geology and psychology.

Each year the two universities co-sponsor a common season of theatrical productions, as well as 'World Week,' a joint program of honors colloquia, and a variety of other cultural and social activities.

NEW JERSEY/ NEW YORK METROPOLITAN REGION

The NJIT campus is in one of the nation's most exciting cultural and business regions. Advantages include:

- . Minutes from New Jersey Performing Arts Center, Liberty Science Center, Meadowlands Sports Complex, Manhattan and all of its attractions, Newport Center Mall, and Secaucus Outlet Center.
- . Discount tickets for Broadway shows, museums, concerts, and sporting events.
- . Weekend trips throughout the Northeastern United States: skiing, boating, swimming, hiking, and more.
- . The spectacular Jersey shore is less than one hour away.



PRUDENTIAL CENTER

The new home of the National Hockey League New Jersey Devils is going up in downtown Newark at the corner of Mulberry and Edison streets, about one mile from the NJIT's University Heights campus.

Opened in October 2007, 'The Rock' is set the centerpiece of the city's Downtown Core Redevelopment Project. In addition to the world's best hockey, it will be home to numerous entertainment and sporting events, including NJIT basketball. In December 2007 and January 2008, NJIT will host two stand-alone men's games and two men's/women's doubleheaders in North America's newest major arena.

The arena, with seating for 18,500 spectators, features a 4,800 square-foot exterior LED screen, as well as the latest in ice-surface technology and a gourmet restaurant overlooking the ice for Devils games. The building will contain 850,000 square feet of space, 9,000 tons of steel, eight million pounds of structural steel and 25,000 cubic yards of concrete.

RED BULL PARK

The Red Bulls of Major League Soccer and AEG New York broke ground in September 2006 for Red Bull Park, a 25,000-seat soccer stadium and a major component of the Harrison MetroCentre development, located across the Passaic River, about two miles from NJIT's campus.



The \$100 million 'soccer specific' stadium will feature a 360-degree European-style roof/canopy covering the majority of the seating. When completed in the summer of 2008, Red Bull Park will be the home of the MLS Red Bulls, international soccer and other events. AEG developed and operates 'soccer specific' stadiums in California and in Illinois.

The multi-billion dollar Harrison MetroCentre will feature three million square feet of office space; 3,500 residential units; 300,000 square feet of retail space and over 10,000 decked parking spaces when completed.

BEARS AND EAGLES RIVERFRONT STADIUM

Bears and Eagles Riverfront Stadium, the \$30 million state-of-the-art home of the professional baseball Newark Bears and since 2004 the home of NJIT Highlanders baseball, officially opened to the public on July 16, 1999. With a seating capacity of 6,200, "The Den" affords fans an up-close view of the



action. The ballpark also has 20 luxury suites, a picnic area, a party deck, a concert stage situated behind the outfield wall and a major league-caliber press box.

In December 2005, NJIT and the Bears held a joint press conference to herald a new partnership that includes a 10-year deal that extends Bears and Eagles Riverfront Stadium as the home of NJIT Highlanders baseball.



POINTS

2028	Clarence Pierce	1992-96
1909	Demond Cowins	2000-04
1875	Chris Miles	1985-89
1755	Lance Andrews	1989-93
1638	Tom Gallagher	1981-85
1617	Clayton Barker	2002-07
1390	Warren Rogers	1983-87
1345	Andrew South	1992-95
1250	Reggie James	1985-89
1231	Ken Chance	1982-86
1224	Bob Zanzalari	1978-82
1202	Marc Milboiurne Swan	2003-07
1192	Sal Gagliardo	1981-85
1177	Phil Renaud	2000-04
1143	Larry Tosato	1952-56
1139	Kevin Jackson	1988-92
1118	Rich Olson	1964-68
1108	Arnold Giovannoli	1949-53
1104	Lou Mezzina	1988-92
1082	Ahmad Rasool^	2000-03
1004	Charles Brown	1985-88

^ Rasool also scored 282 points as a freshman at Wheeling Jesuit University for a collegiate total of 1,364.

• Mars Mellish M'03 scored 546 points at Manhattan College (1997-2000) and 564 at NJIT (2001-02) for a collegiate total of 1,110.

SCORING AVERAGE

(min. 45 games)

24.5	Larry Tosato	1952-56
22.6	Arnold Giovannoli	1949-53
19.9	Clarence Pierce	1992-96
17.2	Tom Gallagher	1981-85
17.0	Demond Cowins	2000-04

REBOUNDS

1191	Rich Olsen	1964-68
1077	Sal Gagliardo	1981-85
1026	Andrew South	1992-95
959	Demond Cowins	2000-04
787	Clarence Pierce	1992-96
733	Latif McMorris	1997-2000
656	Bill Triplett	1987-91
640	Lou Mezzina	1988-92
635*	Bob Zanzalari	1978-82
587	Phil Renaud	2000-04

ASSISTS

611	Lance Andrews	1989-93
485	Joe Marcotte	1993-95
388	Clayton Barker	2002-07
379	Ahmad Rasool	2000-03
361	Russell Murdock	1989-92
332	Clarence Pierce	1992-96

BLOCKS

358	Tory Black	1995-98
344	Andrew South	1992-95
152	Demond Cowins	2000-04
76	Clarence Pierce	1992-96
63	Latif McMorris	1997-99
54	Akida Ellerbee	1992-96
43	Jose Mikulas	2002-04

39	Phil Renaud	2000-04
31	Jeff Sonnemna	1994-98
	Wycliffe Gordon	1996-97

STEALS

273	Clarence Pierce	1992-96
216	Clayton Barker	2002-07
198	Ahmad Rasool	2000-03
158	DeShawn Charles	1998-00
153	Joe Marcotte	1993-95
126	Akida Ellerbee	1992-96
125*	Lance Andrews	1989-93
122	Demond Cowins	2000-04
94	Brian Joyce	1996-97
91	Andrew South	1992-95

GAMES PLAYED

114	Lou Mezzina	1988-92
	Bill Triplett	1987-91
113	Lance Andrews	1989-93
112	Demond Cowins	2000-04
	Phil Renaud	2000-04
111	Jeff Roberto	1990-94
110	Vinnie Williams	1987-91

FIELD GOALS

708	Clarence Pierce	1992-96
691	Demond Cowins	2000-04
621	Chris Miles	1985-89
522	Clayton Barker	2002-07
520	Andrew South	1992-95
488	Reggie James	1985-89
435	Akida Ellerbee	1994-96
400*	Lance Andrews	1989-93
386	Sal Gagliardo	1981-85
385	Phil Renaud	2000-04

FIELD-GOAL ATTEMPTS

1572	Clarence Pierce	1992-96
1342	Clayton Barker	2002-07
1259	Demond Cowins	2000-04
1116	Chris Miles	1985-89
968	Andrew South	1992-95
923	Ahmad Rasool	2000-03
844*	Lance Andrews	1988-93
834	Reggie James	1985-89
737	Kevin Jackson	1988-92
731	Akida Ellerbee	1994-96

FIELD GOAL PERCENTAGE

(min. 200 made)

65.4*	Bill Triplett (253-387)	1987-91
63.9	Marc Milbourne Swan (433-678)	2003-07
59.5	Akida Ellerbee (435-731)	1994-96
58.5	Reggie James (488-834)	1985-89
58.1*	Sal Gagliardo (386-664)	1981-85

THREE-POINT FIELD GOALS

259	Clarence Pierce	1992-96
229	Lance Andrews	1989-93
210	Clayton Barker	2002-07
137	Randle DeFalco	2001-2005
128	Chris Miles	1986-89
124	Owain States	1998-99,00-01

120	Kevin Jackson	1989-91
102	DeShawn Charles	1998-2000
95	Kraig Peters	2004-pres.
91*	Russell Murdock	1989-92

THREE-POINT FIELD-GOAL ATTEMPTS

687	Clarence Pierce	1992-96
604	Clayton Barker	2002-07
501	Lance Andrews	1989-93
399	Randle DeFalco	2001-2005
398	Owain States	1998-99,00-01
306	Kevin Jackson	1989-91
298	Kraig Peters	2004-pres.
254	Ahmad Rasool	2000-03
246	DeShawn Charles	1998-2000
235	Jeff Roberto	1990-94

THREE-POINT FIELD-GOAL PERCENTAGE (min. 50 made)

66.0*	Reggie James (68-103)	1985-89
62.4*	Chris Miles (128-205)	1985-89
44.9	Lance Andrews (229-501)	1989-93
41.5	DeShawn Charles (102-246)	1988-00
40.1	Russell Murdock (91-224)	1989-92
32.8	Clayton Barker (210-604)	2002-07

FREE THROWS MADE

478	Demond Cowins	2000-04
416	Clarence Pierce	1992-96
371	Tom Gallagher	1981-85
357	Clayton Barker	2002-07
332	Marc Milbourne-Swan	2003-07
279	Latif McMorris	1998-2000
267	Ahmad Rasool	2000-03
265	Andrew South	1992-95
263*	Lance Andrews	1989-93
206*	Reggie James	1985-89

FREE-THROW ATTEMPTS

740	Demond Cowins	2000-04
528	Clarence Pierce	1992-96
487	Marc Milbourne-Swan	2003-07
454	Clayton Barker	2002-07
422	Tom Gallagher	1981-85
407	Latif McMorris	1997-2000
370*	Lance Andrews	1989-93
363	Andrew South	1992-95
358	Ahmad Rasool	2000-03
310	Akida Ellerbee	1994-96

FREE-THROW PERCENTAGE

(min. 75 made)

87.9	Tom Gallagher (371-422)	1981-85
84.0	Mars Mellish (100-119)	2001-02
82.3	Darrow Murdock (144-175)	1987-90
79.0*	Chris Miles (181-229)	1985-89
78.8	Clarence Pierce (416-528)	1992-96
78.6	Clayton Barker (357-454)	2002-07

* Complete information unavailable. Total is likely higher, or average different, than indicated.

POINTS

624	Clarence Pierce	1994-95
598	Demond Cowins	2003-04
	Clarence Pierce	1995-96
575	Chris Miles	1988-89
570	Clayton Barker	2005-06
564	Mars Mellish	2000-01
557	Reggie James	1988-89
550	Demond Cowins	2002-03
542	Lance Andrews	1990-91
535	Akide Ellerbee	1995-96

SCORING AVERAGE

24.3	Clarence Pierce	1993-94
22.3	Gary Miller	1973-74
22.1	Clarence Pierce	1995-96
21.9	Clayton Barker	2005-06
21.4	Demond Cowins	2003-04
20.9	Mars Mellish	2000-01
20.8	Clarence Pierce	1994-95
20.5	Arnold Giovannoli	1952-53
20.0	Jerome Anderson	1980-81

REBOUNDS

402	Joe Galvao	1968-69
372	Andrew South	1993-94
370	Bob Zanzalari	1979-80
338	Latif McMorrin	1998-99
335	Andrew South	1994-95
319	Andrew South	1992-93
306	Demond Cowins	2003-04
298	Latif McMorrin	1999-2000
283	Clarence Pierce	1995-96
266	Victor Foster	1987-88

REBOUND AVERAGE

22.3	Joe Galvao	1968-69
14.2	Bob Zanzalari	1979-80
13.8	Andrew South	1993-94
12.6	Bob Zanzalari	1980-81
12.4	Andrew South	1994-95
12.3	Andrew South	1992-93
11.3	Latif McMorrin	1998-99
11.0	Latif McMorrin	1999-2000
10.9	Demond Cowins	2003-04
10.5	Clarence Pierce	1995-96

ASSISTS

292	Joe Marcotte	1994-95
217	Lance Andrews	1992-93
202	Mark Tompeck	1976-77
193	Joe Marcotte	1993-94
178	Lance Andrews	1991-92
169	Brian Joyce	1996-97
159	Clarence Pierce	1995-96
151	Russell Murdock	1989-90
147	DeShawn Charles	1999-2000
133	Ahmad Rasool	2000-01

BLOCKS

198	Tory Black	1996-97
128	Andrew South	1993-94
111	Andrew South	1992-93

105	Andrew South	1994-95
97	Tory Black	1997-98
63	Tory Black	1995-96
56	Demond Cowins	2003-04
41	Dan Stonkus (Division I)	2006-07
38	Jamal Goddson	1993-94
36	Demond Cowins	2001-02

STEALS

94	Brian Joyce	1996-97
	Clarence Pierce	1995-96
93	DeShawn Charles	1999-2000
79	Mars Mellish	2001-02
	Joe Marcotte	1994-95
76	Clarence Pierce	1994-95
74	Joe Marcotte	1993-94
73	Ahmad Rasool	2000-01
71	Clayton Barker	2002-03
70	Lance Andrews	1992-93

THREE-POINT FIELD GOALS

84	Clarence Pierce	1994-95
82	Mars Mellish	2001-02
79	Lance Andrews	1990-91
77	Kevin Jackson	1991-92
68	Owain States	1998-99
67	Clayton Barker	2005-06
64	Lance Andrews	1991-92
63	Russell Murdock	1991-92

GAMES

30	many times
----	------------

FIELD GOALS

240	Chris Miles	1988-89
220	Akida Ellerbee	1995-96
216	Reggie James	1988-89
201	Demond Cowins	2003-04
195	Demond Cowins	2002-03
	Chris Miles	1986-87
193	Andrew South	1993-94
192	Clayton Barker	2005-06
191	Mars Mellish	2001-02
186	Chris Miles	1987-88

FIELD-GOAL ATTEMPTS

475	Clayton Barker	2005-06
456	Mars Mellish	2001-02
453	Chris Miles	1988-89
412	Kevin Jackson	1991-92
385	Clarence Pierce	1993-94
380	Jeff Sonnema	1996-97
378	Reggie James	1988-89
377	Andrew South	1993-94
375	Lance Andrews	1991-92
372	Akida Ellerbee	1995-96

FIELD-GOAL PERCENTAGE

71.3	Bill Triplett (169-237)	1989-90
66.1	Akida Ellerbee (185-280)	1994-95
66.1	Marc Milbourne Swan (127-192)	2005-06
64.0	Sal Gagliardo (142-222)	1984-85
62.4	Reggie James (151-242)	1987-88
61.34	Victor Foster (100-163)	1987-88

61.30	Ken Chance (160-261)	1984-85
61.2	Chris Miles (195-319)	1986-87
61.0	Itay Koren (94-154)	1999-2000

THREE-POINT FIELD GOAL ATTEMPTS

223	Mars Mellish	2001-02
215	Clarence Pierce	1994-95
207	Owain States	1998-99
196	Clarence Pierce	1995-96
191	Clayton Barker	2005-06
191	Owain States	2000-01
189	Kevin Jackson	1991-92
170	Lance Andrews	1991-92
164	Ricky Urban	2003-04
154	Clarence Pierce	1993-94

THREE-POINT FIELD GOAL PERCENTAGE (min 30 made)

67.0	Reggie James (59-88)	1988-89
66.1	Lance Andrews (37-56)	1989-90
63.1	Chris Miles (41-65)	1987-88
	Chris Miles (41-65)	1986-87
61.3	Chris Miles (46-75)	1988-89

FREE THROWS MADE

168	Demond Cowins	2003-04
158	Demond Cowins	2002-03
157	Clarence Pierce	1995-96
137	Tom Gallagher	1984-85
134	Clarence Pierce	1994-95
126	Marc Milbourne Swan	2004-05
123	Lance Andrews	1991-92
119	Clayton Barker	2005-06
110	Mars Mellish	2001-02

FREE-THROW ATTEMPTS

245	Demond Cowins	2003-04
232	Demond Cowins	2002-03
221	Clarence Pierce	1995-96
182	Latif McMorrin	1999-2000
179	Marc Milbourne Swan	2004-05
159	Clarence Pierce	1994-95
157	Akida Ellerbee	1994-95
155	Lance Andrews	1991-92
153	Akida Ellerbee	1995-96
	Tom Gallagher	1984-85

FREE-THROW PERCENTAGE

<i>(min. 35 made)</i>		
90.4	Chris Kelly	1994-95
90.0	Chris Miles	1986-87
89.5	Tom Gallagher	1984-85
87.6	Tom Gallagher	1981-82
87.0	Tom Gallagher	1983-84
86.7	Clarence Pierce	1982-83
86.4	Tom Gallagher	1993-94
84.4	Darrow Murdock	1988-89
84.3	Clarence Pierce	1994-95
	Pete Scheffler	1982-83

INDIVIDUAL SINGLE-GAME RECORDS

POINTS (40+)

45	Clayton Barker vs. Post (CT)	2/25/06
44	Mike Grubbs	1976-77
	Clarence Pierce vs. Stevens	1/15/94
43	Clarence Pierce vs. Manhattanville	2/1/94
42	Chris Miles vs. USMMA-King's Point	2/8/88
41	Akida Ellerbee vs. Centenary (NJ)	1/18/96
40	Joe Caiola vs. Concordia (NY)	2/29/80

REBOUNDS

23	Andrew South vs. New York Maritime	3/7/94
	Vic Foster vs. William Paterson	1/18/88

ASSISTS

17	Joe Marcotte vs. Southern Vermont	2/26/94
	Clarence Pierce vs. Centenary (NJ)	1/18/95
	Joe Marcotte vs. Yeshiva	1/25/94

BLOCKS

16	Tory Black vs. Polytechnic	2/5/97
14	Andrew South vs. Stevens	2/14/94

THREE-POINTERS

8	Clarence Pierce vs. Mount St. Vincent	2/23/95
	Clarence Pierce vs. Manhattanville	2/1/94
5	Clayton Barker vs. Wilmington	12/4/02

TEAM RECORDS

Points, Season2,7611994-95
Points, Game139 vs. Purchase (30)1/26/87
Points Allowed, Game129 by Mercy (79)2/23/77
Least PPG Allowed52.31964-65
Most PPG96.41986-87
Scoring Margin, Season26.11988-89
Field Goals, Season1,0471988-89
FG Attempts, Season2,2361991-92
FG Percentage, Season5531988-89
Field Goals, Game60 vs. Purchase1/26/87
FG Attempts, Game106 vs. Purchase1/26/87
Three-Pointers, Season2811991-92
3FG Attempts, Season7721991-92
3FG Percentage, Season6591986-87
Three-Pointers, Game22 vs. Stevens1/17/90
3FG Attempts, Game44 vs. Pratt11/26/91
Rebounds, Season1,3631994-95
Rebounds, Game71 vs. Bard2/19/94
Wins, Season281994-95
Winning Percentage9331994-95

The Highlanders in Postseason

NCAA DIVISION III

1991
1993
1994
1995*
1996

* national quarterfinals



ECAC DIVISION III METRO

1982*
1983
1985*
1986
1987
1988*
1989
1990
1992
1997

* champion

ECAC DIVISION II

1999
2001
2003



1922-23 ()

Coach: Frank Entwisle

1923-24 (2-1)

YMCA	W	36-32
Stevens Tech JV	L	28-33
YMCA	W	58-15

1924-25 (2-3)

Upsala	W	36-31
Stevens Tech JV	L	21-24
Bloomfield Seminary	L	30-32
Webb Naval	W	34-26
Upsala	L	20-26

1925-26 (2-4)

Upsala	L	
Stevens Tech	L	
Wagner	L	
Webb Naval	L	
Webb Naval	W	
Wagner	W	

1926-27 (7-5)

St. Francis	W	24-14
Webb Naval	W	28-24
Pratt	L	23-29
Columbia Pharmacy	W	29-28
Washington Square	L	14-21
Upsala	L	29-31
Wagner	W	27-21
Cooper Union	W	23-20
Stevens Tech JV	W	25-21
Wagner	W	36-27
Webb Naval	L	18-32
St. Francis	L	23-27

1927-28 (3-8)

St. Francis	L	13-43
Columbia Pharmacy	W	51-35
Princeton JV	L	19-32
Newark Arts & Sci.	W	71-16
Stevens Tech	L	26-42
Washington Square	L	28-43
Newark Normal	L	19-29
Webb Naval	W	20-19
Savage	L	27-48
Upsala	L	33-29
Rider	L	28-40

1928-29 (1-7)

Long Island		
Columbia Pharmacy		
Stevens Tech		
Brooklyn Tech		
Mercer Beasley		
Rider		
Long Island		
Upsala		

1929-30 (4-6)

Webb Naval	W	27-21
Drew	W	20-16
Cooper Union	L	12-28
John Marshall	L	21-55
Brooklyn Polytechnic	W	43-17
Webb Naval	L	12-13
Stevens Tech	L	21-43
Drew	W	24-18
Upsala	L	23-39
Princeton JV	L	3-19

1930-31 (8-1)

Newark Normal	W	47-18
Stevens Tech	L	25-47
Drew	W	33-18
Webb Naval	W	49-26
Brooklyn Poly. (3ot)	W	39-37
NYU	W	39-22
Webb Naval	W	38-17
Drew	W	38-33
Upsala	W	32-31

Coach: Otto Falb

1931-32 (3-6)

Brooklyn Polytechnic	L	15-31
Webb Naval	W	26-19
Drew	W	41-30
LIU	L	27-43
Dana	L	20-31
Upsala	L	28-40
Cooper Union	L	36-50
Drew	W	36-30
Brooklyn	L	14-48

1932-33 (5-4)

at Newark Normal	L	32-36
at Bloomfield Sem.	L	30-35
at Drew	W	43-25
at Brooklyn Poly.	W	41-29
JERSEY CITY STATE	W	30-25
DREW	W	44-29
WEBB NAVAL	W	41-26
UPSALA	L	
DANA	L	

Coach: Fred Bauder

1933-34 (3-6)

Newark Teachers	W	29-26
Newark Teachers	L	17-25
Drew	W	41-25
Drew	W	32-28
Upsala	L	28-72
Rutgers Pharmacy	L	24-38
Brooklyn Polytechnic	L	25-35
Webb Naval	L	22-25
Wagner	L	22-32

Coach: Fred Bauder

1934-35 (5-4)

at Princeton JV	L	24-63
at Drew	W	29-27
DREW	W	28-18
NEWARK NORMAL	W	31-29
At Rutgers Pharmacy	L	26-42
WEBB NAVAL	W	27-21
At Newark Normal	W	27-19
At Wagner	L	22-32
COOPER UNION	L	15-32

Coach: Fred Bauder

1935-36 (8-3)

at Drew	W	30-29
BLOOMFIELD SEM.	L	34-36
BROOKLYN POLY	L	25-28
At Pratt	L	20-43
DREW	W	31-28
NEWARK NORMAL	W	33-24
RUTGERS PHARM.	W	42-34
COOPER UNION	W	27-25
WAGNER	W	36-34
at Upsala	W	34-25
at Newark Normal	W	41-39

Coach: Fred Bauder

1936-37 (5-4)

at Wagner	W	34-27
at Rutgers Pharmacy	L	26-28
DREW	L	21-25
at Newark Normal	W	34-17
at Brooklyn Poly.	L	34-40
at Newark	L	22-47
NEWARK NORMAL	W	36-31
UPSALA	W	37-22
DREW	W	31-18

Coach: Fred Bauder

1937-38 (8-2)

BROOKLYN POLY.	W	42-24
RUTGERS PHARM.	W	43-33
DREW (ot)	W	40-36
NEWARK TEACHERS	W	70-28
at Pratt	L	40-45
at Newark Teachers	W	48-17
at Wagner	W	34-33
at Drew	W	30-28
at Newark	L	32-36
NEWARK	W	43-38

Coach: Fred Bauder

1938-39 (6-5)

CATHEDRAL	W	55-24
at Brooklyn Poly.	L	33-38
MONTCLAIR TEACH.	L	35-46
at Rutgers Pharmacy	W	61-28
NEWARK TEACHERS	W	56-22
BLOOMFIELD	W	36-29
WAGNER	W	50-28
at Drew	W	47-34
at Newark	L	33-38
DREW	L	24-36
MANHATTAN, SI	L	39-41

Coach: Fred Bauder

1939-40 (9-4)

at Panzer	L	27-34
RUTGERS PHARM.	W	49-30
At Newark Teachers	W	50-19
BROOKLYN POLY.	W	47-34
JOHN MARSHALL	L	28-32
DREW	W	38-27
at Upsala	W	55-51

at Drew	W	51-38
at Montclair Teachers	L	28-37
PRATT	W	57-45
at Wagner	W	36-30
NEWARK	L	42-43
UPSALA	W	49-33

Coach: Fred Bauder

1940-41 (2-8)

Drew	L	29-45
Panzer	L	29-53
Brooklyn Polytechnic	L	38-46
Rutgers Pharmacy	L	40-44
Pratt	L	37-55
Newark	L	35-39
Newark Teachers	W	36-25
Drew	L	35-46
Montclair Teachers	L	47-74
Upsala	W	72-53

Coach: Fred Bauder

1941-42 ()

Coach: Fred Bauder

1942-43 (2-6)

Coach: Fred Bauder

1943-44 ()

Coach: Fred Bauder

1944-45 ()

Coach: Fred Bauder

1945-46 ()

Coach: Fred Bauder

1946-47 ()

Coach: Fred Bauder

1947-48 ()

Coach: Fred Bauder

1948-49 ()

Coach: Fred Bauder

1949-50 (5-5)

Drew	W	57-55
Rutgers-Newark	L	44-66
Jersey City Teachers	W	76-62
Stevens Tech	W	50-48
Newark Teachers	W	69-52
St. Peter's	L	60-65
Rutgers Pharmacy	L	43-69
Paterson Teachers	L	59-66
Drew	W	68-64
Rutgers-Newark	L	70-78

Coach: Fred Bauder

1950-51 (10-3)

12/2 at Panzer	L	64-69
12/5 at Newark Teachers	W	65-56
12/9 DREW	W	57-54
12/16 NEWARK TEACH.	W	73-57
1/6 at Rutgers Pharm.	W	83-67
1/13 STEVENS TECH	L	49-57
1/27 PATERSON TEACH.	L	63-64
Jersey City Teachers	W	84-61
at Nat'l Agricultural	W	71-41
2/8 at Rutgers-Newark	W	84-75
2/17 PANZER	W	77-75
2/22 at Drew	W	
2/24 RUTGERS-NEWARK	W	
3/3		

Coach: Fred Bauder

1951-52 (8-7)

12/1 Drew	L	49-67
12/8 Bloomfield	L	52-59
12/15 Stevens Tech	W	53-48
1/5 Jersey City Teachers	L	33-62
1/12 Montclair State	W	59-57
1/19 Newark State	L	54-57
1/26 Panzer	W	86-61
2/2 Montclair State	W	69-62
2/6 Rutgers Pharmacy	L	59-97
2/9 Rutgers-Newark	W	66-62
2/16 Paterson State	W	78-66
2/22 Newark State	W	65-55
2/23 Drew	L	76-86
3/1 Rutgers-Newark	W	66-62
3/8 Panzer	L	73-82

Coach: Fred Bauder

1952-53 (12-5)

Coach: Fred Bauder

1953-54 ()

Coach: Fred Bauder

1954-55 (10-7)

12/4 PATERSON TEACH.	L	89-93
12/11 at Drew	W	88-71
12/18 MONTCLAIR TEACH.	W	92-85
1/7 at Montclair Teachers	L	79-83
1/15 NEWARK TEACHERS	W	67-63
1/22 PANZER	L	62-89
1/29 BLOOMFIELD	W	120-99
2/1 at Paterson Teachers	W	94-91
2/4 at Jersey City Teach.	W	86-71
2/5 at Panzer	L	78-91
2/7 at Rutgers-Newark	W	80-63
2/8 at Rider	W	70-66
2/12 at Bloomfield	L	72-84
2/19 RUTGERS-NEWARK	L	65-69
2/22 DREW	W	59-56
2/26 RIDER	L	64-71
3/5 STEVENS TECH	W	77-71

Coach: Fred Bauder

1955-56 (8-6)

12/3 PATERSON TEACH.	W	103-59
12/10 at Stevens Tech	L	57-64
12/17 RUTGERS-NEWARK	W	86-66
1/7 DREW	W	83-64
1/14 PACE	W	111-73
1/21 BLOOMFIELD	L	87-91
1/31 at Paterson Teachers	W	92-85
2/3 at Panzer	L	94-105
2/7 at Rutgers-Newark	L	69-87
2/9 YESHIVA	L	61-73
2/18 at Drew	W	96-75
2/21 at Jersey City Teach.	W	85-80
2/25 PANZER	L	90-107
3/3 MONTCLAIR TEACH.	W	90-77

Coach: Fred Bauder

1956-57 (9-6)

12/8 S. HALL-PATERSON	W	84-79
12/15 vs. Rutgers-Newark	W	66-54
1/5 vs. Newark Teachers	W	64-49
1/12 DREW	W	73-71
1/19 COOPER UNION	W	78-60
1/26 JERSEY CITY TEAC.	W	72-56
1/29 at Paterson Teachers	L	61-62
2/2 at Montclair Teachers	L	64-67
2/5 at Pace	W	83-64
2/9 at Bloomfield	L	71-79
2/16 at Yeshiva	L	74-99
2/21 at Panzer	L	79-98
2/23 at Drew	W	70-59
3/2 RUTGERS-NEWARK	W	66-50
3/9 STEVENS TECH (ot)	L	70-78

Coach: Fred Bauder

1957-58 (10-6)

12/7 at Rutgers-Newark	W	67-58
12/14 at Stevens Tech	L	64-81
1/11 DREW	W	75-66
1/18 at Monmouth	L	58-75
1/25 NEWARK TEACHERS	L	74-82
1/28 PATERSON TEACH.	W	66-64
1/30 PACE	W	73-59
2/1 at Brooklyn Polytech.	W	86-70
2/4 MONTCLAIR TEACH.	W	77-75
2/6 PANZER	W	74-66
2/8 at Cooper Union	L	66-80
2/15 at Drew	W	72-61
2/21 at Newark Teach. (ot)	L	92-102
2/28 LOWELL TECH	L	69-75
3/1 RUTGERS-NEWARK	W	66-55
3/8 BLOOMFIELD	W	91-75

Coach: Fred Bauder

1958-59 (7-8)

12/6 at Bloomfield	L	57-74
12/13 at Rutgers-Newark	W	87-78
1/10 COOPER UNION	W	80-63
1/17 MONMOUTH	L	72-80
1/24 at Newark State	L	71-84
1/27 BROOKLYN POLY.	W	81-69
1/29 at Paterson State	L	59-73

1959-60 (7-10)

12/12	at Stevens Tech	L	71-79
12/19	at Rutgers-Newark	L	81-89
1/8	at Newark State	W	68-61
1/16	MONTCLAIR STATE	L	73-83
1/23	PACE	W	84-67
1/29	PATERSON STATE	W	85-77
1/30	at Brooklyn Polytech.	L	54-60
2/4	at Monmouth	L	70-93
2/6	at Drew	W	84-75
2/9	at Jersey City State	L	61-81
2/13	at Cooper Union	W	76-71
2/20	at Upsala	L	61-115
2/27	DREW	W	92-66
3/5	RUTGERS-NEWARK	L	78-79

Coach: Fred Bauder

1960-61 (9-9)

12/3	JERSEY CITY STATE	L	54-71
12/10	RUTGERS-NEWARK	W	67-58
12/16	at Newark State	L	62-80
	at RIT	W	72-63
	vs. Illinois Tech	L	50-79
	vs. Indiana Tech	L	52-79

Fitzgerald

1/7	NEWARK STATE	L	65-69
1/14	at Montclair State	L	54-65
	at S. Hall-Paterson	L	
1/27	at Paterson State	L	62-67
1/31	at Pace	L	69-89
2/2	DREW	W	62-60
2/7	BLOOMFIELD	W	89-77
2/9	BROOKLYN POLY.	W	79-65
2/11	LONG ISLAND COLL.	W	74-57
2/18	at Drew	W	77-49
2/25	STEVENS TECH	W	82-61
3/4	at Rutgers-Newark	W	69-66

Coach: Fred Bauder/Joseph Fitzgerald

1961-62 (11-8)

	S. HALL-PATERSON	W	73-70
	At Stevens Tech	W	65-61
	RUTGERS-NEWARK	W	86-73
	vs. Indiana Tech	L	67-78
	vs. Brooklyn Polytech	W	74-58
	vs. Pratt	L	49-51
2/1	At Newark State	L	61-62
	MONTCLAIR STATE	L	70-82
	PATERSON STATE	L	61-73
	Monmouth	L	75-100
	NEWARK STATE	L	86-87
	at Drew	W	66-62
	Trenton State	W	74-66
	Brooklyn Polytechnic	W	82-62
	Long Island College	W	100-79
	DREW	W	88-75
	At Bloomfield	L	80-94
2/24	at Jersey City State	W	67-61
3/2	at Rutgers-Newark	W	66-61

Coach: Joseph Fitzgerald

1962-63 ()

12/1	at Seton Hall-Paterson	L	73-88
12/8	DREW		
12/15	NEWARK STATE	L	67-98
1/5	at Rutgers-Newark		
1/11	at Montclair State		
1/19	JERSEY CITY STATE		
1/26	at Brooklyn Polytech.		
1/29	at Monmouth		
2/1	at Pratt	L	
2/5	TRENTON STATE	W	
2/7	UPSALA	L	
2/9	LONG ISLAND COLL.	W	
2/16	at Drew	W	
2/21	LOWELL TECH	W	
2/23	STEVENS TECH	W	74-48
3/2	Rutgers-Newark	W	

Coach: Joseph Fitzgerald

1963-64 (8-11)

Coach: Joseph Fitzgerald

1964-65 (9-4)Coach: Joseph Fitzgerald
Led NAIA in scoring defense (52.3 ppg)**1965-66 (11-8)**

	Paterson State	W	90-69
	Hunter	W	67-53
	Delaware State	L	63-69
	vs. Stevens Tech	W	68-44
	vs. Fairleigh Dickinson	W	66-56
	Montclair State	W	65-55
	Jersey City State	L	50-71
	Monmouth	L	57-70

	Rutgers-Newark	L	48-59
	DC Teachers	L	93-95
	Delaware State	L	55-91
	Pratt	W	57-54
	Trenton State	L	64-96
	Drew	L	53-56
	FDU-Madison	W	74-66
	Newark State	W	69-64
	Brooklyn Polytechnic	W	71-59
	Stevens Tech	W	91-59
	Bloomfield	W	89-82

Coach: Joseph Fitzgerald

1966-67 (11-8)

	UPSALA	L	56-64
	NEWARK STATE	W	82-62
	BROOKLYN POLY.	W	79-38
	vs. Bloomfield	W	91-61
	at Montclair State	L	54-69
	Rutgers-Newark	W	64-62
	DC TEACHERS	L	52-58
	at Monmouth	L	46-76
	at Trenton State	L	71-94
	RIT	W	69-60
	RUTGERS-NEWARK	W	70-49
1/31	at Boston State	W	59-57
2/1	at Bentley	L	65-86
2/4	JERSEY CITY STATE	L	58-72
2/11	FDU-MADISON	W	67-60
	MONTCLAIR STATE	L	74-86
	Paterson State	W	80-58
	STEVENS TECH	W	73-42
	at Bloomfield	W	74-70

Coach: Lou Torciacollo

1967-68 (13-7)

12/2	UPSALA	W	65-60
12/9	BENTLEY	W	79-76
12/16	MONTCLAIR STATE	L	71-81
	PRATT	W	83-74
	vs. Monmouth	L	66-75
	vs. Upsala	L	59-60
	at Brooklyn Polytech.	W	82-55
	at Newark State	W	73-64
	TRENTON STATE	L	73-82
	at DC Teachers	W	112-85
	at Southeastern	W	64-45
	at Rutgers-Newark	W	79-62
	PATERSON STATE	W	89-66
	at Jersey City State	L	65-67
	at FDU-Madison	L	65-81
	RIT	W	109-87
	MONMOUTH	L	69-71
	at Drew	W	81-50
	at Stevens Tech	W	103-59
	at Bloomfield	W	97-78

Coach: Lou Torciacollo

1968-69 (6-12)

11/30	at Upsala	L	49-57
12/6	LEHMAN	L	50-58
12/14	at Montclair State	L	47-77
12/20	at Hunter	W	69-59
12/27	at Montclair State	L	53-77
1/3	Pratt	W	75-59
1/10	BROOKLYN POLY.	W	75-33
	NEWARK STATE	L	66-70
	at Trenton State	L	46-64
	at Bentley	L	94-97
	RUTGERS-NEWARK	W	57-56
	at Paterson State	L	81-84
	JERSEY CITY STATE	L	58-61
	FDU-MADISON	L	68-73
	at Monmouth	L	73-97
	STEVENS TECH	W	70-47
	DREW	W	92-45
	at Bloomfield	L	73-74

Coach: Lou Torciacollo

1969-70 (7-13)

	UPSALA	L	81-102
	BENTLEY	L	77-100
	Brooklyn Polytechnic	W	77-68
	MONTCLAIR STATE	L	59-101
	at Rutgers-Newark	W	67-65
	BLOOMFIELD	L	52-69
	NEWARK STATE	W	90-76
	PRATT	L	66-67
	at Newark State	W	74-72
	TRENTON STATE	L	44-74
	at DC Teachers	L	83-91
	at Southeastern	W	78-73
	HUNTER	L	35-51
	PATERSON STATE	L	71-81
	at Jersey City State	L	56-76
	at FDU-Madison	L	66-110

	Monmouth	L	70-87
	Stevens Tech	W	62-47
	at Drew	W	50-45
	at Bloomfield	L	57-72

Coach: Lou Torciacollo

1970-71 (6-13)

	at Upsala	L	60-67
	STEVENS TECH	W	57-55
	at Montclair State	L	62-85
	ST. ELIZABETH	W	76-75
	RUTGERS-NEWARK	W	58-52
	STEVENS TECH	W	47-46
	BLOOMFIELD	L	45-61
	PRATT	W	87-76
	NEWARK STATE	L	58-63
1/16	at Trenton State	L	58-74
	at Hunter	L	55-73
	FDU-MADISON	L	57-59
	at Salem State	L	69-95
	at Bentley	L	56-75
	at Paterson State	L	92-113
	BROOKLYN POLY.	W	87-80
	at Monmouth	L	79-115
	JERSEY CITY STATE	L	61-89
	DREW	W	90-61
	at Bloomfield	L	69-78

Coach: Lou Torciacollo

1971-72 (4-16)

	UPSALA	L	60-110
	PRATT	L	74-76
	at Stevens Tech	L	72-91
	MONTCLAIR STATE	L	69-107
	at Rutgers-Newark	L	56-64
	DREW	W	77-66
	STEVENS TECH	L	54-71
	At Newark State	L	58-66
	TRENTON STATE	L	71-88
	HUNTER	L	65-73
	at Southeastern	W	100-62
	at DC Teachers	L	69-87
	at FDU-Madison	L	67-96
	at William Paterson	L	79-92
	N.Y. MARITIME	W	70-45
	BABSON	L	85-87
	MONMOUTH	L	76-114
	at Jersey City State	L	73-97
	at Drew	W	81-70
	at Bloomfield	L	61-96

1972-73 (4-16)

	at Montclair State	L	48-99
11/16	RUTGERS-NEWARK	L	57-60
12/18	STEVENS TECH	L	66-79
	BLOOMFIELD	L	43-58
	NEWARK STATE	L	65-75
	at Trenton State	L	53-83
	at Hunter	L	81-104
1/20	BROOKLYN POLY.	W	73-57
1/24	FDU-MADISON	L	73-85
1/27	at William Paterson	L	68-92
2/2	at Quinnipiac	L	72-94
2/3	at Babson	L	78-87
2/10	at Monmouth	L	63-120
2/16	at N.Y. Maritime	W	83-67
2/17	JERSEY CITY STATE	L	49-83
2/19	DREW	L	71-72
2/23	at Pratt	W	66-56
3/3	at Bloomfield	L	55-72

Coach: Rem Becker

1973-74 ()

Coach: Rem Becker

1974-75 ()

First year NCAA

Coach: Rem Becker

1975-76 (3-17)

	Brooklyn Polytech	W	87-61
	Stevens Tech	L	57-86
	Rutgers-Camden	L	67-87
	Rutgers-Newark	L	58-62
	Yeshiva	L	61-78
	Pratt	W	63-58
	Stevens Tech	L	59-77
	Worcester State	L	49-97
	MIT	L	63-92
	FDU-Madison	L	69-104
	Plymouth State	L	58-68
	Pratt	L	60-77
	Mercy (ot)	W	101-90
	Dominican (NY)	L	57-73
	Jersey City State	L	52-86
	New York Maritime	L	53-57
	Drew (2ot)	L	50-63

	Conn. College	L	75-77
	Bloomfield	L	64-82

* IAC (0-4)

Coach: Rem Becker (17-65)

1976-77 (5-18)

	STEVENS TECH	W	65-63
	BLOOMFIELD	L	64-79
	POLYTECHNIC	W	105-73
	RUTGERS-NEWARK	W	67-64
	at John Jay	L	62-90
	KEAN	L	71-91
	at Yeshiva	L	86-88
	vs. Dominican (NY)	W	80-71
	at Pratt	L	80-102
	at Dominican (NY)	L	67-77
	at Drew	L	76-101
	at MIT	W	53-50
	FDU-MADISON	L	76-84
	at USMMA	L	63-98
	at Coast Guard	L	63-81
	at Conn. College	L	57-69
	at Jersey City State	L	44-70
	at Stevens Institute	L	69-72
	at New York Maritime	L	75-82
	at Concordia (NY)	L	69-66
	at Pratt	L	87-96
	MERCY	L	79-129
	at Bloomfield	L	51-89

Coach: Jim Rake

1977-78 (4-21)

Coach: Jim Rake

1978-79 (5-17)

12/8	at Connecticut College	L	69-95
12/9	at Coast Guard	L	26-58
12/13	KEAN	L	51-87
12/16	Yeshiva	L	57-67
1/6	at FDU-Madison	L	72-88
1/8	DREW	L	64-95
1/15	at Ramapo	L	67-80a
1/20	Rutgers-Newark	L	76-109
1/27	at Bloomfield	L	63-81
1/31	STATEN ISLAND	W	57-53
2/3	at Jersey City State	L	70-114
2/5	NEW YORK TECH	W	54-50
2/9	at N.Y. Maritime	L	60-77
2/10	at Stevens Tech	L	71-98
2/17	at Drew	L	63-94
2/23	at Penn State-Capitol	L	51-61

Coach: Jim Rake (14-56)

1979-80 (20-7)

2/26	CONCORDIA	L	97-110
	Concordia (NY)	W	74-78
	<i>Coach: Jim Rake (14-56)</i>		
1979-80 (20-7)			
	St. Joseph's	W	92-57
12/1	POLYTECHNIC (ot)	W	39-36
12/4	at Northeastern Bible	W	73-40
12/7	Washington (MD)	L	65-74
	Hunter	L^	45-46
12/12	at Kean (ot)	W	84-74
12/13	SARAH LAWRENCE	W	90-40
12/15	Dominican (NY)	W	61-58
	St. Joseph's	W	95-36
12/22	PHILA. BIBLE	W	78-52
1/5	Yeshiva	W	84-65
1/7	at Drew	L	60-65
	Ramapo	W	63-59
1/16	CONN. COLLEGE	W	88-58
1/19	Rutgers-Newark	L	44-50
1/22	FDU-MADISON (2ot)	W	76-74
1/26	at Stevens Tech	W	56-49
2/2	BLOOMFIELD	W	47-44
2/8	N.Y. MARITIME	L	64-70
2/9	STEVENS TECH	W	72-60
2/13	YESHIVA	L	63-70
2/15	at Alvernia	W	61-52
2/16	at United Wesleyan	W	75-56
2/21	DREW	W	54-49
2/23	PENN ST.-CAPITOL	W	75-57
	at Polytechnic	L	60-63
2/29	CONCORDIA (NY)	W	95-68

1980-81 (14-9)

11/25	NORTHEAST. BIBLE	W	74-44
12/1	at Yeshiva	W	65-44
	POLYTECHNIC	W	55-38
	Dominican (NY)	W	94-60
12/13	St. Thomas Aquinas	L	76-99
	LEHMAN	W	46-45
1/6	at Concordia (NY)	W	70-68
1/7	at Bloomfield	L	56-65
1/10	DREW	L	60-86
	Ramapo	L	56-65
1/17	RUTGERS-NEWARK	W	60-53
1/24	STEVENS TECH	W	55-42
	FDU-Madison	L	42-44
	at N.Y. Maritime	L	57-65
2/10	YESHIVA	W	68-46
2/14	at Connecticut College	L	55-62
2/17	BLOOMFIELD	W	64-61
2/18	at Polytechnic (ot)	L	52-59
	Stevens	L	59-60
2/23	at Drew	W	65-63
	Cathedral	W	84-73
	at Alvernia	W	68-65
	at Penn-State Capitol	W	58-57

Coach: Jim Catalano

1981-82 (23-5)

	Bard	W	85-24
	Concordia (NY)	W	69-65
11/24	NORTHEAST. BIBLE	W	87-32
11/28	at Trenton State	L	63-72
12/4	at New York Tech	W	72-48
	Cathedral	W	91-62
12/9	Yeshiva	W	60-59
	MIT	W	73-53
	Florida Tech	W	69-65
1/9	at Drew	L	70-79
	Rutgers-Newark	W	73-64
1/23	at Stevens Tech	W	82-62
1/25	at William Paterson	L	63-78
1/27	at Bloomfield	L	50-65
	Mt. St. Vincent	W	96-63
	at Old Westbury	L	58-64
	Mt. St. Vincent	W	60-51
	Yeshiva	W	62-45
	N.Y. Maritime	W	78-63
	St. Joseph's (NY)	W	88-61
	New York Tech	W	55-28
	Stevens Tech	W	77-63
	Drew	W	66-52
	FDU-Madison	W	72-65
	Drew (ot)	W	79-73
	N.Y. Maritime	W	88-72
	Baruch@	W	79-67
	John Jay@	W	81-63

@ ECAC Tournament

ECAC D-III NY-Metro Champions

Coach: Jim Catalano

1982-83 (19-7)

	St. Joseph's (NY)	W	88-59
	York (NY)	W	60-53
	Trenton State	W	58-54
	Kean	L	71-81
	Polytechnic	W	68-53
	Yeshiva	W	91-60
	Mount St. Vincent	W	65-50
	Illinois Tech	W	76-70
	Binghamton	W	74-72
	FDU-Madison	L	72-78
	Rutgers-Newark	W	86-68
	Upsala	L	72-82
	Stevens	W	91-68
	William Paterson	L	70-73
	Bloomfield	L	66-77
	Drew	W	83-66
3/2	at N.Y. Maritime	W	63-62
	Staten Island@	L	

@ ECAC Tournament

Coach: Jim Catalano

1983-84 (12-12)

	BARUCH	W	79-70
	VASSAR	W	92-58
	vs. Rose-Hulman	L	62-77
	vs. RIT	W	85-74
	at Illinois Tech	L	77-94
	YESHIVA	W	94-57
	vs. Trenton State	L	59-64
	vs. Uptown State	L	59-71
	vs. Kutztown State	L	77-85
	FDU-MADISON	W	67-63
	at Rutgers-Newark	W	71-63
	UPSALA	L	69-91
	at Stevens Tech	W	76-66
	at William Paterson	L	63-86
	at Bloomfield	W	55-53

POLYTECHNIC	W	
at Drew	L	
at Old Westbury	L	
at Yeshiva	W	
N.Y. MARITIME	W	
at St. Thom. Aquinas	L	
at Kean (ot)	L	
STEVENS TECH	W	
DREW	L	

* IAC (5-2)

Coach: Jim Catalano

1984-85 (22-7)

11/27	MT. ST. VINCENT	W	103-75
	vs. Fitchburg State	W	83-68
	vs. N.Y. Maritime	W	66-50
12/6	TRENTON STATE	L	64-66
12/8	N.Y. MARITIME	W	91-70
12/12	at Yeshiva	W	91-61
12/28	vs. Montclair State	W	75-73
12/29	at Upsala	L	82-92
1/4	POLYTECHNIC	W	90-45
	at FDU-Madison	W	77-59
1/11	NORWICH	W	75-57
1/12	RUTGERS-NEWARK	W	118-79
1/19	STEVENS TECH	W	83-66
1/21	WILLIAM PATERSON	L	67-70
1/23	BLOOMFIELD	L	66-70
1/26	at Polytechnic	W	94-65
1/31	OLD WESTBURY	W	69-63
2/2	at Upsala	L	81-90
2/6	YESHIVA	W	102-62
2/8	at N.Y. Maritime	W	75-61
2/9	VASSAR	W	96-62
2/11	at St. Thom. Aquinas	L	62-96
	Kean	W	103-84
2/16	at Stevens Tech	L	60-67
2/20	at Drew	W	68-66
2/27	at Stevens Tech	W	89-68
3/2	JERSEY CITY ST.@	W	89-84
3/6	LEHMAN@	W	57-55
3/9	USMMA@	W	70-68

* IAC (8-1)

@ ECAC Tournament

ECAC D-III NY-Metro Champion

Coach: Jim Catalano

1985-86 (16-10)

@ ECAC Tournament

Coach: Jim Catalano

1986-87 (23-4)

11/21	ROBERTS WESLEYAN	L	78-79
	CCNY	W	108-67
12/1	at Queens (NY)	L	68-80
12/3	MT. ST. VINCENT	W	130-51
	N.Y. MARITIME*	W	120-69
	RAMAPO	W	112-84
12/10	at Yeshiva*	W	90-76
	at Polytechnic*	W	108-54
1/5	at Rutgers-Camden	W	74-65
1/7	KEAN	W	85-68
1/13	at Nyack	W	90-77
1/14	TRENTON STATE	L	73-81
1/17	STEVENS TECH*	W	110-62
	POLYTECHNIC*	W	108-54
1/26	at SUNY-Purchase	W	139-30
1/28	at Drew	W	88-54
	at Western Conn.*	W	83-74
2/2	E. STROUDSBURG	W	90-88
2/4	YESHIVA*	W	85-52
	VASSAR	W	74-51
2/9	USMMA	W	73-55
	at Stevens Tech*	W	88-52
	at N.Y. Maritime*	W	94-53
	WESTERN CONN.*	W	93-77
	MT. ST. MARY'S	W	74-55
	LEHMAN@	W	55-49
3/11	OLD WESTBURY@	L	55-61

* IAC (10-0)

@ ECAC Tournament

Coach: Jim Catalano

1987-88 (22-7)

11/30	at Ramapo	W	85-50
12/2	DREW	W	73-63
12/5	at N.Y. Maritime*	W	103-61
12/9	at Yeshiva*	W	75-68
12/23	at John Jay	W	107-80
12/28	at St. Peter's	L	60-84
12/29	WPI	W	91-78
12/30	FDU-MADISON	L	78-87
1/4	RUTGERS-CAMDEN	L	82-85
1/6	at Kean	L	78-80
1/11	at Webber	W	98-88
1/13	at Trenton State	L	86-111
1/16	at Stevens Tech*	W	93-68
1/18	WILLIAM PATERSON	W	75-70

1/20	POLYTECHNIC*	W	82-47
1/27	PRATT*	W	77-85
1/30	WESTERN CONN.*	W	50-75
2/1	at E. Stroudsburg	L	62-50
2/3	YESHIVA*	W	76-52
2/6	at Vassar	W	67-91
2/8	USMMA	W	75-76
2/10	at Polytechnic*	W	67-56
2/13	STEVENS TECH*	W	56-60
2/15	N.Y. MARITIME*	W	
2/20	at Western Conn.*	L	
2/23	NYACK	W	
	HUNTER@	W	
	at FDU-Madison@	W	
	at Jersey City State@	W	

* IAC (9-1)

@ ECAC Tournament

ECAC D-III Metro Champions

Coach: Jim Catalano (first year full-time)

1988-89 (23-6)

11/18	vs. Albany Pharmacy	W	96-49
11/19	at Hunter	W	83-70
11/23	at Rutgers-Camden	W	81-71
11/26	DAEMEN	W	88-75
11/28	RAMAPO	W	87-83
12/1	at Polytechnic*	W	106-43
12/3	at N.Y. Maritime*	W	91-63
12/7	YESHIVA*	W	95-52
12/21	TRENTON STATE	L	76-96
12/30	JOHN JAY	W	88-60
1/4	KEAN	W	83-81
1/7	MONTCLAIR STATE	L	79-81
1/10	at Inter-American	W	94-75
1/14	STEVENS TECH*	W	114-33
1/18	at Southampton	W	87-86
1/26	at Yeshiva*	W	79-62
1/28	at Western Conn.*	L	67-80
2/1	at Drew	W	88-73
2/6	at USMMA	W	83-70
2/10	at York (NY)	W	107-78
2/11	at Stevens Tech*	W	124-64
2/13	at N.Y. Maritime*	W	108-72
2/15	VASSAR	W	113-62
2/18	WESTERN CONN.*	L	82-84
2/20	POLYTECHNIC*	W	121-57
2/23	at Stony Brook	L	69-75
	Mt. St. Vincent@	W	87-78
	Stony Brook@	W	88-79
	Kean	L	97-116

* IAC (8-2)

@ ECAC Tournament

Coach: Jim Catalano

1989-90 (19-10)

11/22	RUGERS-CAMDEN	W	92-71
11/29	DREW	W	75-71
12/2	N.Y. MARITIME*	W	110-76
12/6	at Yeshiva*	W	75-74
12/8	vs. Medgar-Evers	W	85-78
12/9	at Utica Tech	L	70-86
12/11	STONY BROOK\$	L	82-88
12/13	SOUTHAMPTON	W	92-77
12/22	BLOOMFIELD	W	89-58
12/23	FDU-MADISON	L	62-67
1/3	LEHMAN	W	90-49
1/15	at Kean	L	100-120
1/18	at Stevens Tech	W	79-67
1/25	YESHIVA*	W	99-63
1/27	STATEN ISLAND\$	W	92-60
1/29	POLYTECHNIC*	W	109-60
1/31	at Mt. St. Vincent*	L	77-81
2/2	at York (NY)	W	103-70
2/6	at USMMA\$	L	68-75
2/8	at John Jay	W	fft
2/10	STEVENS TECH*	W	115-52
2/13	Hunter\$	L	71-98
2/17	at N.Y. Maritime*	W	119-83
	WESTERN CONN.*	L	81-84
	Polytechnic*	W	84-76
	Mt. St. Vincent*	W	106-88
	at Western Conn.*	L	56-97
	Upsala@	W	93-92
	Stony Brook@	L	72-85

* IAC (9-3)

\$ Skyline (1-3)

@ ECAC Tournament

Coach: Jim Catalano

1990-91 (25-5)

12/1	at N.Y. Maritime*	W	121-79
12/3	YESHIVA*	W	86-66
12/5	at Manhattanville\$	W	78-77
12/8	UTICA TECH	W	89-76
12/11	STONY BROOK\$	L	78-81
12/13	HUNTERS	W	96-88
12/27	vs. American	W	102-98
1/4	vs. Catholic	W	80-68

87-57	1/5	at York (PA)	W	83-71
96-51	1/10	POLYTECHNIC*	W	124-55
87-74	1/12	at Hunter\$	L	86-96
69-81	1/14	STATEN ISLAND\$	W	115-88
74-71	1/17	STEVENS TECH*	W	124-74
74-65	1/22	USMMA\$	W	82-47
100-84	1/26	at Staten Island\$	W	92-72
100-55	1/29	at Yeshiva*	W	78-65
72-51	2/1	CENTENARY	W	115-74
82-55	2/2	DREW	W	83-64
75-86	2/4	MANHATTANVILLE\$	W	84-69
101-64	2/6	at USMMA\$	W	82-47
96-81	2/8	MT. ST. VINCENT*	W	84-69
92-75	2/12	N.Y. MARITIME*	W	139-93
103-93	2/15	at Polytechnic*	W	119-70
	2/16	at Western Conn.*	L	72-83
	2/18	at Stevens Tech*	W	101-75
	2/20	at Stony Brook	L	79-92
	2/21	POLYTECHNIC+	W	115-65
	2/22	MT. ST. VINCENT+	W	105-70
	2/23	WESTERN CONN.+	W	82-74
	2/28	GLASSBORO ST.@	L	80-88

* IAC (9-1)

\$ Skyline (6-2)

+ IAC Tournament

@ NCAA Tournament

Coach: Jim Catalano

1991-92 (24-6)

76-96	11/26	PRATT	W	137-68
88-60	11/30	STATEN ISLAND\$	W	98-87
83-81	12/2	at Yeshiva*	W	81-67
79-81	12/4	MANHATTANVILLE\$	W	102-75
94-75	12/6	vs. Centenary	W	116-95
114-33	12/7	vs. Upsala	W	97-79
87-86	12/10	STONY BROOK\$	W	91-75
79-62	12/12	at Hunter\$	L	84-92
67-80	12/30	at Florida Tech	L	78-93
88-73	1/4	YESHIVA*	W	86-76
83-70	1/11	HUNTERS	L	78-87
107-78	1/13	at Staten Island\$	W	118-109
124-64	1/16	at Stevens Tech*	W	91-73
108-72	1/18	N.Y. MARITIME*	W	118-53
113-62	1/21	at USMMA\$	W	79-63
82-84	1/25	at Polytechnic*	W	123-83
121-57	1/27	USMMA\$	W	71-61
69-75	1/31	YORK (NY)	W	100-70
87-78	2/3	at Manhattanville\$	L	72-73
88-79	2/7	at Mt. St. Vincent*	W	104-89
97-116	2/8	POLYTECHNIC*	W	110-85
	2/10	ADELPHI	W	72-65
	2/13	at Stony Brook\$	L	65-88
	2/15	BARD*	W	118-63
	2/17	STEVENS TECH*	W	109-79
	2/20	N.Y. Maritime*	W	87-70
92-71	2/22	Mt. St. Vincent*	W	96-72
75-71	3/7	John Jay@	W	106-84
110-76	3/11	FDU-Madison@	W	79-76
75-74	3/14	Glassboro State@	L	84-91

1993-94 (23-4)

12/4	vs. Wesley	W	93-72
12/5	at York (PA)	L	56-67
12/10	at USMMA\$	W	65-58
1/3	YORK (NY)	W	89-62
1/5	USMMA\$	W	76-57
1/7	vs. Clarkson	W	77-57
1/8	at Wilkes	L	60-74
1/13	at Hunter\$	L	77-92
1/15	at Stevens Tech*	W	87-49
1/22	at Polytechnic*	W	113-68
1/25	at Yeshiva*	W	95-55
1/29	HUNTER\$	W	84-62
2/1	MANHATTANVILLE\$	W	96-64
2/3	at Staten Island\$	W	77-66
2/5	at Mt. St. Vincent\$	W	94-72
2/7	POLYTECHNIC\$	W	96-54
2/10	at Stony Brook\$	W	66-61
2/14	STEVENS TECH*	W	74-52
2/16	N.Y. MARITIME*	W	76-63
2/18	at Manhattanville\$	W	69-60
2/19	BARD*	W	112-47
2/20	YESHIVA*	W	61-44
2/24	YESHIVA+	W	75-55
2/26	STONY BROOK\$	W	72-54
2/28	STATEN ISLAND\$	W	92-67
3/5	RICH. STOCKTON@	L	69-74
3/7	N.Y. MARITIME+	W	81-58

* IAC (8-0)
\$ Skyline (10-1)
+ IAC Tournament
@ NCAA Tournament
NCAA First Round
Coach: Jim Catalano

1994-95 (28-2)

11/18	vs. Goucher	W	88-75
11/19	vs. Elmira	W	87-77
11/22	at Yeshiva*	W	96-58
11/29	MT. ST. MARY\$	W	102-60
12/12	STATEN ISLAND\$	W	79-74
12/28	at St. Thomas	W	82-75
1/2	at Staten Island\$	L	76-79
1/4	USMMA\$	W	114-61
1/13	HAVERFORD	W	105-83
1/15	at Stevens Tech*	W	98-69
1/17	at Bard*	W	103-62
1/19	STEVENS TECH*	W	126-79
1/21	POLYTECHNIC*	W	100-47
1/23	MT. ST. VINCENT	W	72-58
1/28	at Hunter\$	W	74-62
1/31	at Manhattanville\$	W	99-56
2/1	vs. Yeshiva*	W	75-55
2/7	at Polytechnic*	W	107-58
2/11	USMMA\$	W	83-77
2/13	HUNTER\$	W	86-61
2/15	at N.Y. Maritime*	W	74-73
2/17	MANHATTANVILLE\$	W	92-59
2/19	at Mt. St. Mary\$	W	104-71
2/21	vs. N.Y. Maritime+	W	88-63
2/23	at Mt. St. Vincent+	W	86-77
2/26	SOUTHERN VT.	W	98-79
3/2	YORK (NY)@	W	87-70
3/4	JERSEY CITY ST.@	W	97-86
3/10	HAMILTON@	W	96-86
3/11	ROWAN@	L	87-101

* IAC (8-0)
\$ Skyline (9-1)
+ IAC Tournament
@ NCAA Tournament
NCAA Elite Eight
Coach: Jim Catalano

1995-96 (17-10)

11/17	vs. Daemen	L	96-108
11/18	vs. Lehman	W	93-83
11/21	BARD*	W	127-40
11/28	MT. ST. MARY\$	W	95-93
11/30	at Centenary\$	L	91-101
12/2	STATEN ISLAND	L	75-86
12/4	at Yeshiva*	W	71-57
12/9	at Polytechnic*	W	77-55
12/29	at Occidental	L	73-88
12/30	vs. LaVerne	L	80-88
1/3	MT. ST. VINCENT*\$	W	78-73
1/13	STEVENS TECH*	W	78-67
1/18	CENTENARY\$	W	91-52
1/20	at USMMA\$	L	68-84
1/22	at Mt. St. Vincent*\$	L	80-81
1/26	at Hunter	W	81-78
1/29	YESHIVA*	W	91-64
1/31	at Manhattanville\$	L	82-86
2/3	at Stevens Tech*	W	94-90
2/6	POLYTECHNIC*	W	98-70
2/7	at Mt. St. Mary\$	L	82-93
2/10	USMMA\$	W	72-68
2/14	N.Y. MARITIME*	W	81-69

2/17	MANHATTANVILLE\$	W	85-62
	At Stevens Tech+	W	87-76
	Vs. Mt. St. Vincent+	W	74-64
	Vs NYU@	L	88-105

* IAC (9-1)
\$ Skyline (5-5)
+ IAC Tournament
@ NCAA Tournament
NCAA First Round
Coach: Jim Catalano

1996-97 (18-9)

11/22	UConn-STAMFORD	W	137-37
11/23	CONCORDIA (NY)	W	70-68
11/26	YESHIVA	W	69-54
11/30	ST. JOSEPH'S (NY)	W	75-38
12/3	MT. ST. MARY*	L	63-78
12/5	at Staten Island	L	46-78
12/7	N.Y. MARITIME*	W	63-62
12/28	at Patten	W	86-78
12/30	at Holy Names	L	54-73
1/4	at Mt. St. Vincent*	W	103-64
1/8	MANHATTANVILLE*	W	60-44
1/18	at USMMA*	W	54-73
1/23	POLYTECHNIC	W	68-58
1/25	at St. Joseph's (NY)	W	72-41
1/27	at Mt. St. Vincent*	L	57-60
1/31	HUNTER	W	85-61
2/3	at Yeshiva	W	64-43
2/5	at Polytechnic	W	56-50
2/7	USMMA*	W	81-60
2/10	BARD	W	88-24
2/12	at Mt. St. Mary*	L	83-85
2/18	at Manhattanville*	L	72-78
2/22	at N.Y. Maritime*	W	66-50
2/25	MOLLOY	L	62-67
2/26	at Yeshiva	W	61-55
2/27	JOHN JAY	W	80-71
3/1	at Staten Island@	L	62-65

* Skyline (5-5)
@ ECAC Tournament
Coach: Jim Catalano

1997-1998 (12-15)

11/14	at W. Va. Wesleyan	L	73-90
11/15	vs. Glenville State	L	62-70
11/19	at Concordia (NY)*	W	86-82
11/22	at St. Rose*	L	68-87
12/3	DOWLING*	L	59-71
12/6	at Mercy (NY)*	L	71-79
12/10	at Adelphi*	L	59-74
12/13	SOUTHAMPTON*	W	94-83
1/3	at Cal-Riverside	W	65-60
1/7	at Cal-Maritime	W	73-53
1/10	at Dowling*	L	78-81
1/14	QUEENS (NY)*	L	90-92
1/17	PHILA. TEXTILE*	L	49-78
1/19	at C.W. Post*	L	65-72
1/21	at Molloy*	L	73-80
1/24	MERCY (NY)*	W	76-68
1/28	at Queens (NY)*	W	71-69
1/31	MOLLOY*	W	72-65
2/2	NEW YORK TECH*	W	66-64
2/4	at Phila. Textile*	L	64-83
2/7	CONCORDIA (NY)*	W	91-71
2/9	C.W. POST*	W	66-65
2/13	at Southampton*	W	98-93
2/14	at New York Tech*	W	86-71
2/18	ADELPHI*	L	46-64
2/21	ST. ROSE*	L	69-79
2/24	at St. Rose+	L	68-79

* NYCAC (10-12)
First year Division II
Coach: Jim Catalano

1998-99 (17-13)

11/14	DIST. OF COLUMBIA	W	73-67
11/15	UMASS LOWELL	W	57-59
11/18	at Columbia	L	58-54
12/2	ADELPHI*	W	60-54
12/5	MOLLOY*	W	75-70
12/9	at Phila. Textile*	L	59-61
12/12	ST. ROSE* (ot)	L	74-86
12/29	at Florida Southern	L	87-91
1/2	DOWLING*	L	72-77
1/4	CONCORDIA (NY)*	W	118-74
1/6	at Southampton* (ot)	W	94-91
1/9	at New York Tech*	W	73-65
1/13	QUEENS (NY)*	W	70-62
1/16	at Mercy*	W	95-82
1/18	C.W. POST*	W	70-47
1/20	at Adelphi*	L	64-76
1/23	at Molloy*	L	73-83
1/27	PHILA. TEXTILE* (ot)	L	67-69
1/30	at St. Rose*	W	57-52
2/3	at Concordia (NY)*	L	89-91
2/6	SOUTHAMPTON*	W	82-59

2/8	at Dowling*	L	75-82
2/10	NEW YORK TECH*	W	59-54
2/13	at Queens (NY)*	L	72-85
2/17	MERCY (NY)*	W	68-51
2/20	at C.W. Post* (ot)	W	70-69
2/23	QUEENS (NY)+ (ot)	W	73-71
2/25	at St. Rose+	L	69-89
3/6	NEW YORK TECH@	W	63-62
3/7	MERRIMACK@	L	82-96

* NYCAC (13-9)
+ NYCAC Tournament
@ ECAC Tournament
Coach: Jim Catalano

1999-2000 (15-12)

11/27	PUERTO RICO	W	87-67
12/1	at New York Tech*	L	72-82
12/3	at Nyack	W	94-83
12/4	vs. Roberts Wesleyan	L	83-98
12/8	PHILADELPHIA*	W	85-78
12/11	at Queens (NY)*	L	70-73
12/19	ST. ROSE*	W	91-87
12/21	ADELPHI*	W	80-70
12/28	at Eckerd	L	67-78
12/30	at Tampa	L	75-94
1/3	at Southampton*	W	96-90
1/5	MOLLOY*	L	57-65
1/8	at Mercy*	L	71-88
1/12	DOWLING*	W	73-70
1/15	at C.W. Post*	W	90-80
1/17	CONCORDIA (NY)*	W	78-66
1/19	at Adelphi*	L	74-77
1/22	NEW YORK TECH*	L	56-60
1/26	at Philadelphia*	L	86-93
1/29	QUEENS (NY)*	W	72-63
2/2	SOUTHAMPTON*	L	66-78
2/5	at Molloy*	W	75-68
2/9	MERCY (NY)*	W	92-77
2/12	at Dowling*	W	97-81
2/16	C.W. POST*	W	76-70
2/20	at Concordia (NY)*	W	102-69
2/26	at St. Rose*	L	70-77

* NYCAC (13-9)
Coach: Jim Catalano

2000-01 (13-15)

11/18	ST. ANSELM	L	66-86
11/21	DOMINICAN (NY)*	L	61-64
11/29	at Goldey Beacom*	W	86-85
12/2	vs. Maine Machias	W	101-87
12/3	at Husson	W	77-74
12/6	at Nyack*	W	80-69
12/9	BOWIE STATE	W	91-78
12/15	HOLY FAMILY*	W	90-69
12/19	BLOOMFIELD*	L	78-87
12/29	at Rollins	L	58-79
12/30	vs. Montevallo (ot)	W	93-91
1/9	at USP*	L	78-81
1/11	at Teikyo Post*	L	71-78
1/13	at Felician*	L	55-94
1/17	at Dominican (NY)*	L	75-84
1/20	at Bowie State	L	52-68
1/23	at Bloomfield*	L	72-80
1/25	at Wilmington (DE)*	W	81-69
1/27	USP*	W	65-42
1/30	CALDWELL*	L	48-52
2/3	GOLDEY BEACOM*	W	75-58
2/6	TEIKYO POST*	L	55-79
2/7	NYACK*	W	81-65
2/10	FELICIAN*	W	72-62
2/12	at Caldwell*	L	46-63
2/14	WILMINGTON (DE)*	W	70-67
2/17	at Holy Family*	L	53-65
3/10	vs. St. Rose@	L	58-62

*CACC (10-10)
^ Felician later forced to forfeit
@ ECAC Tournament
Coach: Jim Catalano

2001-02 (14-13)

11/16	E. STROUD. (2ot)	L	70-75
11/18	at St. Anselm	L	47-69
11/27	NYACK*	W	79-74
12/1	at Wilmington (DE)^	L	
12/5	DOMINICAN (NY)*	L	54-56
12/7	vs. Pitt-Johnstown	L	62-63
12/8	vs. East Stroudsburg	L	49-63
12/10	at Felician*	W	77-74
12/13	at Caldwell*	L	56-57
12/22	USP*	W	65-59
12/29	at Nova Southeastern	W	70-65
12/30	at Barry	L	70-88
1/3	TEIKYO POST*	L	71-73
1/5	at Holy Family*	L	52-74
1/8	at Bloomfield*	W	61-57
1/10	at Dominican* (ot)	W	75-67
1/15	FELICIAN*	W	76-70

1/23	at Nyack*	W	61-51
1/26	CALDWELL*	L	60-63
1/31	at Goldey-Beacom*	W	77-57
2/2	HOLY FAMILY*	W	74-72
2/5	at Teikyo Post*	W	81-77
2/9	GOLDEY-BEACOM*	W	84-80
2/12	at USP*	W	76-53
2/14	BLOOMFIELD*	L	61-64
2/16	WILMINGTON (DE)*	W	87-77
2/23	at Shaw	L	71-87

^ Wilmington later forced to forfeit
* CACC (14-6, 2nd/11)
Coach: Jim Casciano

2002-03 (18-11)

11/22	vs. Stonehill	W	70-64
11/23	at Mansfield (ot)	L	77-84
12/2	NYACK*	W	83-71
12/4	at Wilmington (DE)*	W	88-62
12/7	at Dominican (NY)*	W	78-75
12/10	SHAW (ot)	L	72-84
12/14	MANSFIELD	L	59-68
12/28	vs. Queens (NY)	L	42-56
12/29	vs. Daemen (ot)	L	76-81
1/5	USP*	W	75-69
1/7	at Caldwell*	W	46-53
1/9	TEIKYO POST*	W	83-69
1/14	at Bloomfield*	W	78-75
1/16	DOMINICAN (NY)*	W	71-61
1/18	at Holy Family*	L	61-79
1/21	FELICIAN*	W	75-70
1/25	GOLDEY-BEACOM*	W	91-68
1/28	at Nyack*	W	91-66
2/1	CALDWELL*	W	59-50
2/3	at Felician*	W	81-73
2/5	at Teikyo Post*	L	65-68
2/8	at Holy Family*	W	61-60
2/11	at USP*	L	72-74
2/13	at Goldey-Beacom*	W	73-64
2/15	BLOOMFIELD*	W	98-64
2/19	at West Chester	W	79-76
2/22	WILMINGTON (DE)*	W	105-77
2/27	vs. Felician+	L	68-74
3/15	at Mansfield^	L	73-83

* CACC (16-4, 1st/11)
+ CACC Tournament
^ ECAC Tournament
Coach: Jim Casciano

2003-04 (10-18)

11/19	AMERICAN INT'L	L	50-71
11/21	vs. Queens (NC)	L	59-91
11/22	vs. Goldey-Beacom	W	79-65
11/25	at Nyack*	W	83-76
12/3	WILMINGTON (DE)*	L	62-68
12/13	at Felician*	L	74-91
12/20	at Philadelphia	L	73-87
1/2	vs. Shaw	L	63-81
1/3	vs. North Florida	L	63-73
1/8	TEIKYO POST*	L	83-93
1/13	BLOOMFIELD* (ot)	W	118-115
1/15	at Dominican (NY)* (ot)	W	70-67
1/17	at Holy Family*	W	79-71
1/20	CALDWELL*	L	63-65
1/24	at Goldey-Beacom*	W	73-50
1/27	NYACK*	L	63-65
1/29	at USP*	L	64-66
1/31	at Caldwell*	L	68-78
2/2	DOMINICAN (NY)*	L	67-73
2/4	at Teikyo Post* (ot)	L	91-101
2/7	HOLY FAMILY*	W	86-84
2/10	USP*	W	74-73
2/14	at Bloomfield* (ot)	L	98-100
2/18	WEST CHESTER	L	50-76
2/21	at Wilmington (DE)*	L	66-69
2/24	FELICIAN* (ot)	W	78-70
2/26	GOLDEY-BEACOM*	W	84-70
3/3	at Teikyo Post+	L	69-95

1/15	at Bloomfield*	L	78-80	12/10	NYACK*	L (OT)	80-85
1/18	DOMINICAN (NY)* (ot)	W	76-72	12/29	at Rollins &	L	57-67
1/20	at Nyack*	L	53-63	12/30	vs. Mansfield &	W	71-69
1/25	FELICIAN*	L	56-77	1/7	at USP*	L	56-69
1/27	at Goldey-Beacom* (ot)	W	83-80	1/10	WILMINGTON*	W	82-69
1/29	at Holy Family*	L	81-84	1/12	at Philadelphia*	L	62-68
2/1	POST*	L	66-73	1/17	FELICIAN*	W (OT)	87-82
2/5	USP*	W	72-71	1/19	at Post*	L	64-78
2/12	at Wilmington (DE)*	W	69-54	1/21	DOMINICAN*	L	62-72
2/15	CALDWELL*	W	62-55	1/24	at Wilmington*	L	75-79
2/19	BLOOMFIELD*	L	69-74	1/26	BLOOMFIELD*	L	75-81
2/22	at Dominican (NY)*	L	69-74	1/28	GOLDEY-BEACOM*	L	49-55
2/25	NYACK	L	71-79	1/31	at Nyack*	W	70-69
3/1	at Caldwell\$	L	71-85	2/2	USP*	L	46-60
CACC (10-10,T 6th/11)				2/4	at Felician	L	66-75
^Clarion Doc Jacobs Classic at Saint Michael's				2/7	at Dominican*	L	71-74
#Comfort Suites Holiday Classic at Bryant				2/11	PHILADELPHIA*	L	65-69
\$CACC Tournament				2/14	at Holy Family*	L	61-67
Coach: Jim Casciano				2/18	at Caldwell*	L	70-82
				2/25	POST*	W	74-68

2005-06 (8-19)

11/18	vs. St. Michael's (VT)	W (OT)	79-75	*CACC (5-17, 12th place)			
11/19	at West Chester	L	52-58	^ West Chester Tournament at West Chester			
11/22	at Molloy	W	74-70	& Rollins Tournament at Rollins			
11/29	CALDWELL*	L (OT)	65-71	Coach: Jim Casciano			
12/1	HOLY FAMILY*	L	52-74				
12/3	at Goldey-Beacom*	W	53-51				
12/6	at Bloomfield*	L	83-100				

2006-07 (5-24)

11/11	at Manhattan	W	56-55	3/1	at North Dakota State	L	52-104
11/14	RIDER	W	63-52	3/3	at South Dakota State	L	61-71
11/17	at Columbia (&)	L	60-73	(&) Denotes 3rd Annual Tyler Ugolyn			
11/18	vs. Saint Peter's (&)	L	57-75	Columbia Classic			
11/27	SIENA	L	40-64	(^) Denotes UCF Holiday Classic			
11/29	at American	L	50-75	First year Division I			
12/1	MAINE	L	58-68	Coach: Jim Casciano			
12/4	LAFAYETTE	L	57-76				
12/6	at Army	L	40-60				
12/11	STONY BROOK	L	61-65				
12/21	at St. John's	L	50-68				
12/29	at Central Florida (^)	L	63-75				
12/30	vs. James Madison (^)	L	66-70				
1/2	NAVY	L (ot)	50-52				
1/7	at Cornell	L	58-69				
1/10	LONGWOOD	W	59-55				
1/13	at IPFW	L	65-82				
1/16	at LaSalle	L	59-78				
1/23	at Siena	L	63-87				
2/1	at Utah Valley	L	55-86				
2/3	at Texas-Pan American	L	60-72				
2/8	SOUTH DAKOTA STATE	W	67-62				
2/10	NORTH DAKOTA STATE	L	57-80				
2/17	IPFW	L	47-52				
2/19	at Longwood	W	78-74				
2/24	UTAH VALLEY	L	47-77				
2/26	TEXAS-PAN AMERICAN	L	58-70				

MEN'S BASKETBALL DIVISION I SUPERLATIVES...

Team

NJIT

78 at Longwood, (2.19.07)
 30 at Longwood, (2.19.07)
 58 at Longwood, (2.19.07)
 .517 (30-58) at Longwood, (2.19.07)
 9 at Columbia, (11.17.06)
 29 vs. Maine, (12.1.06)
 .500 (8-16), at Texas-Pan American (2.3.07)
 21 at Cornell, (1.7.07)
 27 vs. Maine/Cornell, (12.1.06/1.7.07)
 .875 (14-16) at South Dakota State, (3.3.07)
 48 vs. Rider, (11.14.06)
 16 vs. Lafayette, (12.4.06)
 14 vs. Lafayette, (12.4.06)
 8 vs. Navy, (1.2.07)

Points

Field Goals Made
 Field Goal Attempts
 Field Goal Percentage
 3 Pt. Field Goals Made
 3 Pt. Field Goal Attempts
 3 Pt. Field Goal Percentage
 Free Throws Made
 Free Throw Attempts
 Free Throw Percentage
 Rebounds
 Assists
 Steals
 Blocked Shots

Opponents

104, North Dakota State, (3.1.07)
 37, North Dakota State, (3.1.07)
 65, North Dakota State, (3.1.07)
 .674 (29-43), Utah Valley, (2.24.07)
 13, Lafayette, (12.4.06)
 29, Navy, (1.2.07)
 .750 (9-12), (2.24.07)
 28, Columbia, (11.17.06)
 35, Columbia, (11.17.06)
 .893 (25-28), IPFW, (1.13.07)
 44, LaSalle, (1.16.07)
 27, North Dakota State, (3.1.07)
 15, North Dakota State, (2.10.07)
 10, Longwood, (1.10.07)

Individuals

NJIT

27, Clayton Barker vs. South Dakota State (2.8.07)
 9, Marc Milbourne Swan at Longwood (2.19.07)
 25, Clayton Baker vs. Navy (1.2.07)
 1.000 (5-5), Marc Milbourne Swan vs. Siena (11.27.06)
 4 (four different people)
 12, Clayton Barker vs. Navy (1.2.07)
 1.000 (3-3), Courcy Magnus vs. UCF (12.29.06)
 10, Marc Milbourne Swan at Cornell (1.7.07)
 13, Marc Milbourne Swan at Cornell (1.7.07)
 1.000 (8-8), Kraig Peters vs. Utah Valley (2.1.07)
 15, Nesho Milosevic vs. IPFW (2.17.07)
 8, Andrew Engel vs. Lafayette (12.4.06)
 6, Andrew Engel vs. Lafayette (12.4.06)
 5, Dan Stonkus vs. Longwood (1.10.07)

Points

Field Goals Made
 Field Goal Attempts
 Field Goal Percentage
 3 Pt. Field Goals Made
 3 Pt. Field Goal Attempts
 3 Pt. Field Goal Percentage
 Free Throws Made
 Free Throw Attempts
 Free Throw Percentage
 Rebounds
 Assists
 Steals
 Blocked Shots

Opponents

28, Ryan Toolson, Utah Valley (2.1.07)
 10, Maurice Sumter, Longwood (2.19.07)
 24, Maurice Sumter, Longwood (2.19.07)
 .857 (6-7) Ryan Toolson/David Heck,
 Utah Valley (2.24.07)
 6 (four players)
 12, Avery Patterson, St. John's (NY) (12.21.06)
 1.000 (4-4) Ronald Moore, Siena (1/23/07)
 10 (three players)
 12, Rodney Green, LaSalle (1.16.07)
 1.000 (8-8) Paul Stoll,
 Texas-Pan American (2.26.07)
 12 (two players)
 11, Pierre Curtis, James Madison, (12.30.06)
 5, Rodney Green, LaSalle (1.16.07)
 4, Maurice Sumter, Longwood (1.10.07)

NJIT PICKED FOR 2007 NIT SEASON TIP-OFF TOURNAMENT

*Highlanders will open vs. Washington Huskies
in Seattle on November 13*

New Jersey Institute of Technology will step into big-time men's college basketball in a big way this season as one of 16 teams picked for the 2007 Dick's Sporting Goods NIT Season Tip-Off Tournament.

The Highlanders, in their second season of NCAA Division I competition, will venture to Seattle for the four-team West Regional, which will be played on November 13 and 14.

NJIT will take on the host Washington Huskies in the Bank of America Arena on November 13 in an 11 pm (EST) start, CM Newton, chair of the NIT Committee announced.

The other two teams in this year's Western Regional are Utah and High Point (NC), who will play in Seattle on November 13 before the NJIT-Washington game. The regional championship and consolation games will take place in the Bank of America Arena on November 14



(7:30 pm EST consolation and 10:30 pm EST championship).

"This is a tremendous honor for us as such a young program to be involved with an event with this level of competition and prestige," said NJIT coach Jim Casciano. "It's a great chance for us to learn, grow and get exposure for our University. It's something we're going to cherish."

Other regional round hosts are: Syracuse (East); Ohio State (Midwest); and, Texas A&M (South).

Founded in 1985 as the Preseason NIT, the 2007 tournament will bring the four regional champions to Madison Square Garden for semifinals (Nov. 21) and championship and consolation (Nov. 23).

ESPN will provide coverage of the event, televising games on ESPN, ESPN2 and ESPNU. Three Madison Square Garden games will be on ESPN2 and the fourth will be on ESPN.

The University of Washington, 19-13 overall a year ago, including 17-2 at home, returns four starters from last year's Pacific 10 Conference contender.

UNIVERSITY OF WASHINGTON

*2007 Dick's Sporting Goods NIT Season Tip-Off
Nov. 13, 11:00pm (ET), at Bank of America Arena, Seattle*

General Information

Location: Seattle, WA
Founded: 1861
Enrollment: 42,000

Nickname/colors: Huskies/Purple and Gold
Home Court (capacity): Bank of America Arena at Hec Edmundson Pavilion (10,000)

Conference: Pacific-10

President: Dr. Mark Emmert
Director of Athletics: Todd Turner

Sports Information

Basketball Contact: Dan Lepsie
Office Phone: 206-543-2230
Email: dsarge@u.washington.edu

Men's Basketball

Head Coach (alma mater, year): Lorenzo Romar (Cincinnati '92)
Career record (years): 177-130 (10)
Record at school (years): 84-42 (4)

Series vs. NJIT: No previous meetings
2006-07 overall/conference(finish): 26-7/13-5(2nd)
Postseason: Lost in the quarterfinals in the Pac-10; lost to No. 5 Connecticut (92-98) in the Sweet Sixteen
Returning/lost (starters): 7(2)/5(3)



HIGH POINT UNIVERSITY

*Potential 2nd Round Opponent
2007 Dick's Sporting Goods NIT Season Tip-Off
Nov. 14, 7:30/10:30 pm (ET), at Seattle, WA*

General Information

Location: High Point, NC
Founded: 1924
Enrollment: 3,000

Nickname/colors: Panthers/Purple and White
Home Court (capacity): Millis Athletic Center (2,565)

Conference: Big South

President: Dr. Nido Qubein
Director of Athletics: Dr. Woody Gibson

Sports Information

Basketball Contact: Brian Morgan
Office Phone: 336-841-4605
Email: bmorgan@highpoint.edu

Men's Basketball

Head Coach (alma mater, year): Bart Lundy (Winthrop '94)
Career record (years): 163-83 (8)
Record at school (years): 48-42 (3)

Series vs. NJIT: No previous meetings
2006-07 overall/conference (finish): 22-10/11-3
Returning/lost (starters): 11(3)/3(2)



UNIVERSITY OF UTAH

*Potential 2nd Round Opponent
2007 Dick's Sporting Goods NIT Season Tip-Off
Nov. 14, 7:30/10:30 pm (ET), at Seattle, WA*

General Information

Location: Salt Lake City, UT
Founded: 1850
Enrollment: 28,619

Nickname/colors: Runnin' Utes/Crimson and White
Home Court (capacity): Jon M. Huntsman Center (15,000)

Conference: Mountain West

President: Michael K. Young
Director of Athletics: Dr. Chris Brown

Sports Information

Basketball Contact: Andy Seeley
Office Phone: 801-581-3771
Email: aseely@huntsman.utah.edu

Men's Basketball

Head Coach (alma mater, year): Jim Boylan (Maine '87)
Career record (years): First year
Record at school (years): same

Series vs. NJIT: No previous meetings
2006-07 record/conference (finish): 11-19/6-10 (7th)
Returning/lost (starters): 9(4)/4(1)



AMERICAN UNIVERSITY

Nov. 24, 2 pm, Fleisher Athletic Center

General Information

Location: Washington, DC

Founded: 1893

Enrollment: 5,294

Nickname/colors: Eagles/AU Red, White & Blue

Home Court (capacity): Bender Arena (4,500)

Conference: Patriot League

President: Dr. Neil Kerwin

Director of Athletics: Keith Gill

Sports Information

Basketball Contact: Anthony Wilson

Office Phone: 202-531-0162

Email: adubs@american.edu

Men's Basketball

Head Coach (alma mater, year):

Jeff Jones (Virginia '82)

Career record (years): 250-205 (15)

Record at school (years): 104-101 (7)

Series vs. NJIT: American leads, 1-0

2006-07 overall/conference (finish): 16-14/7-7(4th)

Returning/lost (starters): 7(1)/7(4)

**ARMY**

Dec. 6, 7 pm, Prudential Center

General Information

Location: West Point, NY

Founded: 1802

Enrollment: 4,400

Nickname/colors: Black Knights, Cadets/Black,

Gold & Gray

Home Court (capacity): Christl Arena (5,043)

Conference: Patriot League

Superintendent: Lt. Gen. Franklin L. Hagenbeck

Director of Athletics: Kevin Anderson

Sports Information

Basketball Contact: Brian Gunning

Office Phone: 845-938-6871

Email: brian.gunning@usma.edu

Men's Basketball

Head Coach (alma mater, year):

Jim Crews (Indiana '76)

Career record (years): 329-313 (21)

Record at school (years): 35-104 (5)

Series vs. NJIT: Army leads, 1-0

2006-07 overall/conference (finish):

15-16/4-10 (t-6th)

Returning/lost (starters): 16 (3)/4 (2)

**UNIVERSITY OF CENTRAL FLORIDA**

UCF Holiday Classic

Dec. 30, 7:30 pm, at Orlando, FL

General Information

Location: Orlando, FL

Founded: 1963

Enrollment: 47,000

Nickname/colors: Knights/Black and Gold

Home Court (capacity): UCF Arena (10,000)

Conference: Conference USA

President: Dr. John C. Hitt

Director of Athletics: Keith R. Tribble

Sports Information

Basketball Contact: Doug Richards

Office Phone: 407-823-2142

Email: Drichards@athletics.ucf.edu

Men's Basketball

Head Coach (alma mater, year):

Kirk Speraw (Iowa '80)

Career record (years): 313-208 (17)

Record at school (years): 231-187 (14)

Series vs. NJIT: UCF leads, 1-0

2006-07 overall/conference (finish): 22-9/11-5 (2nd)

Returning/lost (starters): 9(3)/4(2)

**CHICAGO STATE UNIVERSITY**

Jan. 19, 4 pm (CT), at Chicago, IL

Feb. 16, 2 pm, Fleisher Athletic Center

General Information

Location: Chicago, IL

Founded: 1867

Enrollment: 7,200

Nickname/Colors: Cougars/ Evergreen and White

Home Arena (capacity): Jacoby Dickens Center (2,500)

Conference: Independent

President: Dr. Elnora D. Daniel

Director of Athletics: Wayne Baskerville

Sports Information

Basketball Contact: Ruben R. Perez, Jr.

Office phone: 773-995-2217

E-mail: rperez21@csu.edu

Men's Basketball

Head coach (alma mater, year): Benjy Taylor (Richmond '89)

Career record (years): First season

Record at school (years): same

Series vs. NJIT: no previous meetings

2006-07 overall record: 9-20

Letterwinners returning/lost (starters): 4(2)/7(3)

**COLUMBIA UNIVERSITY**

Jan. 12, 2 pm, Fleisher Athletic Center

General Information

Location: New York, NY

Founded: 1754

Enrollment: 5,621

Nickname: Lions

Colors: Columbia Blue & White

Home Court (capacity): Francis Levien Gymnasium (2,700)

Conference: Ivy League

President: Lee C. Bollinger

Director of Athletics: Dr. M Dianne Murphy

Sports Information

Basketball Contact: Darlene Camacho

Office phone: 212-854-2535

E-mail: dc2164@columbia.edu

Men's Basketball

Head coach (alma mater, year):

Joe Jones (SUNY College at Oswego '87)

Career record (years): 40-60 (4)

Record at school (years): same

Series vs. NJIT: Columbia leads, 2-0

2006-07 overall/conference (finish): 16-12/7-7 (4th)

Returning/lost (starters): 13(5)/3(0)

**CORNELL UNIVERSITY**

Jan. 15, 8 pm, Prudential Center

General Information

Location: Ithaca, NY

Founded: 1865

Enrollment: 13,700

Nickname/colors: Big Red/Carnelian Red & White

Home Court: Newman Arena (4,473)

Conference: Ivy League

President: David J. Skorton

Director of Athletics: J. Andrew Noel Jr.

Sports Information

Basketball Contact: Jeremy Hartigan

Office Phone: 607-255-9788

Email: jh295@cornell.edu

Men's Basketball

Head Coach (alma mater, year):

Steve Donahue (Ursinus '84)

Career record (years): 74-117 (7)

Record at school (years): same

Series vs. NJIT: Cornell leads, 1-0

2006-07 overall/conference (finish): 16-12/9-5 (3rd)

Returning/lost (starters): 12(3)/5(2)



FORDHAM UNIVERSITY

Dec. 8, 1 pm, at Bronx, NY

General Information**Location:** Bronx, NY**Founded:** 1841**Enrollment:** 8,477**Nickname/colors:** Rams/Maroon and White**Home Court (capacity):** Rose Hill Gym (3,200)**Conference:** Atlantic 10**President:** Joseph McShane, SJ**Director of Athletics:** Frank McLaughlinSports Information**Basketball Contact:** Joe DiBari**Office Phone:** 718-817-4240**Email:** dibari@fordham.eduMen's Basketball**Head Coach (alma mater, year):**

Dereck Whittenburg (N.C. State '84)

Career record (years): 120-116 (8)**Record at school (years):** 53-66 (4)**Series vs. NJIT:** No previous meetings**2006-07 overall/conference (finish):**

18-12/10-6 (T-4th)

Returning/lost (starters): 12(5)/1(0)**LAFAYETTE COLLEGE**

Dec. 3, 7 pm, at Easton, PA

General Information**Location:** Easton, PA**Founded:** 1826**Enrollment:** 2,831**Nickname/colors:** Leopards/Maroon & White**Home Court (capacity):** Allan P. Kirby Sports Center (3,500)**Conference:** Patriot League**President:** Daniel H. Weiss**Director of Athletics:** Bruce McCutcheonSports Information**Basketball Contact:** Philip LaBella**Office Phone:** (610) 330-5122**Email:** labellap@lafayette.eduMen's Basketball**Head Coach (alma mater, year):**

Fran O'Hanlon (Villanova '70)

Career record (years): 171-173 (12)**Record at school (years):** same**Series vs. NJIT:** Lafayette leads, 1-0**2006-07 overall/conference (finish):** 9-21/3-11 (8th)**Returning/lost (starters):** 9(4)/4(1)**LA SALLE UNIVERSITY**

Feb. 13, 7 pm, at Philadelphia, PA

General Information**Location:** Philadelphia, PA**Founded:** 1863**Enrollment:** 6,138**Nickname/colors:** Explorers/Blue & Gold**Home Court (capacity):** Tom Gola Arena (4,000)**Conference:** Atlantic 10**President:** Brother Michael McGinniss, F.S.C.**Director of Athletics:** Dr. Thomas BrennanSports Information**Basketball Contact:** Kale Beers**Office Phone:** 215-951-1513**Email:** beers@lasalle.eduMen's Basketball**Head Coach:** Dr. John Giannini**Career record (years):** 331-198 (18)**Record at school (years):** 38-49 (3)**Series vs. NJIT:** La Salle leads, 1-0**2006-07 overall/conference (finish):**

10-20/3-13 (14th)

Returning/lost (starters): 7(1)/2(4)**LEHIGH UNIVERSITY**

Nov. 26, 7 pm, at Bethlehem, PA

General Information**Location:** Bethlehem, PA**Founded:** 1865**Enrollment:** 4,700**Nickname/colors:** Mountain Hawks/Brown & White**Home Court:** Stabler Arena (5,600)**Conference:** Patriot League**President:** Dr. Alice P. Gast**Director of Athletics:** Joe SterrettSports Information**Basketball Contact:** Mike Stagnitta**Office Phone:** 610-758-6631**Email:** mis3@lehigh.eduMen's Basketball**Head Coach (alma mater, year):** Brett Reed

(Eckerd '95)

Career record (years): First season**Record at school (years):** same**Series vs. NJIT:** No previous meetings**2006-07 overall/conference (finish):** 12-19/7-7 (3rd)**Returning/lost (starters):** 7(4)/5(1)**LONG ISLAND UNIVERSITY***Potential 2nd Round Opponent**UCF Holiday Classic*

Dec. 31, 4:30pm/ 7:30 pm, at Orlando, FL

General Information**Location:** Brooklyn, NY**Founded:** 1926**Enrollment:** 11,000**Nickname/colors:** Blackbirds/Black and Silver**Home Court (capacity):** Wellness, Recreation and Athletic Center (2,500)**Conference:** Northeast**President:** David J. Steinberg**Director of Athletics:** John SuarezSports Information**Basketball Contact:** Jeff Mead**Office Phone:** 718-488-1420**Email:** Jeff.Mead@liu.eduMen's Basketball**Head Coach (alma mater, year):**

Jim Ferry (Keene St. '90)

Career record (years): 145-91 (8)**Record at school (years):** 41-72 (4)**Series vs. NJIT:** NJIT (as NCE) leads, 2-1**2006-07 overall/conference (finish):**

10-19/6-12 (10th)

Returning/lost (starters): 10(3)/4(2)**LONGWOOD UNIVERSITY**

Feb. 4, 7pm, Fleisher Athletic Center

Feb. 18, 7pm, at Farmville, VA

General Information**Location:** Farmville, VA**Founded:** 1839**Enrollment:** 4,400**Nickname/colors:** Lancers/Blue & White**Home Court (capacity):** Willett Hall (1,839)**Conference:** Independent**President:** Dr. Patricia P. Cormier**Interim Director of Athletics:** Troy AustinSports Information**Basketball Contact:** Greg Prouty**Office Phone:** 434-392-9679**Email:** proutygd@longwood.eduMen's Basketball**Head Coach (alma mater, year):** Mike Gillian

(North Adams State '86)

Career record (years): 25-94 (4)**Record at school (years):** same**Series vs. NJIT:** NJIT leads, 2-0**2006-07 overall:** 9-22**Returning/lost (starters):** 8(2)/5(3)

LOYOLA COLLEGE (MD)

Jan. 29, 7 pm, Fleisher Athletic Center

General Information**Location:** Baltimore, MD**Founded:** 1852**Enrollment:** 3,400**Nickname/colors:** Greyhounds/Green and Grey**Home Court (capacity):** Reitz Arena (3,253)**Conference:** Metro Atlantic Athletic**President:** Rev. Brian Linnane, S.J.**Director of Athletics:** Joseph BoylanSports Information**Basketball Contact:** Joe DelBalso**Office Phone:** 410-617-2718**Email:** jedelbalso@loyola.eduMen's Basketball**Head Coach (alma mater, year):** Jimmy Patso

(Catholic '89)

Career record (years): 39-48 (3)**Record at school (years):** same**Series vs. NJIT:** No previous meetings**2006-07 overall/conference (finish):**

18-13/12-6 (3rd)

Returning/lost (starters): 9(4)/2(1)**MANHATTAN COLLEGE**

Nov. 10, 2 pm, Fleisher Athletic Center

General Information**Location:** Riverdale, NY**Founded:** 1853**Enrollment:** 3,400**Nickname/colors:** Jaspers/Kelly Green & White**Home Court (capacity):** Draddy Gymnasium (2,345)**Conference:** Metro Atlantic Athletic**President:** Brother Thomas Scanlan, FSC**Director of Athletics:** Robert ByrnesSports Information**Basketball Contact:** Michael Antonaccio**Office Phone:** 718-862-7228**Email:** michael.antonaccio@manhattan.eduMen's Basketball**Head Coach (alma mater, year):**

Barry Rohrsen (St. Francis '95)

Career record (years): 13-17 (1)**Record at school (years):** same**Series vs. NJIT:** NJIT leads, 1-0**2006-07 overall/conference (finish):** 13-7/10-8 (5th)**Returning/lost (starters):** 8(3)/3(2)**NAVY**

Jan. 2, 7 pm, at Annapolis, MD

General Information**Location:** Annapolis, MD**Founded:** 1845**Enrollment:** 4,000**Nickname/colors:** Midshipmen, Mids/Navy Blue and Gold**Home Court (capacity):** Alumni Hall (5,710)**Conference:** Patriot League**Superintendent:** Vice Adm. Jeffrey L. Fowler, USN**Director of Athletics:** Chet GladchukSports Information**Basketball Contact:** Chris Foreman**Office Phone:** 410-293-8774**Email:** forman@usna.eduMen's Basketball**Head Coach (alma mater, year):** Billy Lange

(Rowan '94)

Career record (years): 73-71 (5)**Record at school (years):** 34-52 (2)**Series vs. NJIT:** Navy leads, 1-0**2006-07 overall/conference (finish):**

14-16/4-10 (T-6th)

Returning/lost (starters): 6(2)/4(3)**RIDER UNIVERSITY**

Nov. 28, 7:30 pm, at Lawrenceville, NJ

General Information**Location:** Lawrenceville, NJ**Founded:** 1895**Enrollment:** 5,790**Nickname/colors:** Broncs/Cranberry and White**Home Court (capacity):** Alumni Gymnasium (1,650)**Conference:** Metro Atlantic Athletic**President:** Dr. Mordechai Rozanski**Director of Athletics:** Don HarnumSports Information**Basketball Contact:** Bud Focht**Office Phone:** 609-896-5138**Email:** focht@rider.eduMen's Basketball**Head Coach (alma mater, year):** Tommy Dempsey

(Susquehanna '97; Bloomsburg '05)

Career record (years): 16-15 (1)**Record at school (years):** 104-27 (6)**Series vs. NJIT:** NJIT leads 3-2 (2-2 as NCE)**2006-07 overall/conference (finish):** 16-15/9-9 (7th)**Returning/lost (starters):** 9(4)/2(1)**RUTGERS UNIVERSITY**

Dec. 13, 7 pm, Prudential Center

General Information**Location:** New Brunswick, NJ**Founded:** 1766**Enrollment:** 33,500**Nickname/colors:** Scarlet Knights/Scarlet**Home Court (capacity):** Louis Brown Athletic Center (8,000)**Conference:** BIG EAST**President:** Dr. Richard L. McCormick**Director of Athletics:** Robert E. Mulcahy IIISports Information**Basketball Contact:** Kevin Lorincz**Office Phone:** 732-445-7812**Email:** klorincz@scarletknights.comMen's Basketball**Head Coach (alma mater, year):** Fred Hill

(Montclair '81)

Career record (years): 10-19 (1)**Record at school (years):** same**Series vs. NJIT:** No previous meetings**2006-07 overall/conference (finish):**

10-19/3-13 (T-14th)

Returning/lost (starters): 6(3)/7(2)**STONY BROOK UNIVERSITY**

Dec. 10, 7 pm, at Stony Brook, NY

General Information**Location:** Stony Brook, NY**Founded:** 1957**Enrollment:** 21,685**Nickname/colors:** Seawolves/Scarlet, Blue and Grey**Home Court (capacity):** Stony Brook University Arena (4,000)**Conference:** America East**President:** Dr. Shirley Strum Kenny**Director of Athletics:** Jim FioreSports Information**Basketball Contact:** Phil Hess**Office Phone:** 631-632-7289**Email:** hess@oakland.eduMen's Basketball**Head Coach (alma mater, year):** Steve Pikiell

(UConn '90)

Career record (years): 13-44 (2)**Record at school (years):** same**Series vs. NJIT:** Stony Brook leads, 7-5**2006-07 overall/conference (finish):** 9-20/4-12 (9th)**Returning/lost (starters):** 8(4)/9(1)

UNIVERSITY OF MAINE

Dec. 1, 2 pm, at Orono, ME

General Information

Location: Orono, ME

Founded: 1865

Enrollment: 11,500

Nickname/colors: Black Bears/Blue & White

Home Court (capacity): Harold Alfond tSports Arena (5,712)

Conference: America East

President: Dr. Robert Kennedy

Director of Athletics: Blake James

Sports Information

Basketball Contact: Laura Reed

Office Phone: 207-581-3646

Email: Laura.Reed@umit.maine.edu

Men's Basketball

Head Coach (alma mater, year): Ted Woodward (Bucknell '86)

Career record (years): 38-49 (3)

Record at school (years): same

Series vs. NJIT: Maine leads, 1-0

2006-07 overall/conference (finish): 12-18/7-9 (T-4th)

Returning/lost (starters): 6(1)/5(4)

**UNIVERSITY OF PENNSYLVANIA**

Jan. 5, 7 pm, at Philadelphia, PA

General Information

Location: Philadelphia, PA

Founded: 1740

Enrollment: 10,422

Nickname/colors: Quakers/Red and Blue

Home Court (capacity): The Palestra (8,722)

Conference: Ivy League

President: Amy Gutman

Director of Athletics: Steve Bilsky

Sports Information

Basketball Contact: Mike Mahoney

Office Phone: 215-898-9232

Email: Mahoneyw@pobox.upenn.edu

Men's Basketball

Head Coach (alma mater, year): Glen Miller (Connecticut '86)

Career record (years): 210-166 (14)

Record at school (years): 22-9 (1)

Series vs. NJIT: No previous meetings

2006-07 overall/conference (finish): 22-9/13-1 (1st)

Returning/lost (starters): 11(2)/4(3)

**UNIVERSITY OF TEXAS-PAN AMERICAN**

Potential 2nd Round Opponent

UCF Holiday Classic

Dec. 31, 4:30pm/ 7:30 pm, at Orlando, FL

Jan. 26, 1 pm, Newark, NJ -Prudential Center

Feb. 9, 2 pm (CT), at Edinburg, TX

General Information

Location: Edinburg, TX

Founded: 1927

Enrollment: 19,576

Nickname/colors: Broncs/Forest Green,

Orange & White

Home Court (capacity): UTPA Fieldhouse (4,000)

Conference: Independent

President: Dr. Blandina Cardenas

Director of Athletics: Scott Street

Sports Information

Basketball Contact: TBA

Office Phone: 956-381-2240

Email: jmonaco@utpa.edu

Men's Basketball

Head Coach (alma mater, year): Tom Schuberth (Mississippi State '80)

Career record (years): 14-15 (1)

Record at school (years): same

Series vs. NJIT: UTPA leads, 2-0

2006-07 overall: 14-15

Returning/lost (starters): 7(4)/5(1)

**UTAH VALLEY**

Feb. 2, 2 pm, Fleisher Athletic Center

Feb. 23, 2:05 pm (MT), at Orem, UT

General Information

Location: Orem, UT

Founded: 1941

Enrollment: 23,000

Nickname/colors: Wolverines/Forest Green, Gold and White

Home Court (capacity): The McKay Center (8,500)

Conference: Independent

President: Dr. William A. Sederburg

Director of Athletics: Mike Jacobsen

Sports Information

Basketball Contact: Brent Johnson

Office Phone: 801-863-6231

Email: johnsobe@uvsc.edu

Men's Basketball

Head Coach (alma mater, year): Dick Hunsaker (Webster State '77)

Career record (years): 271-116 (14)

Record at school (years): 104-93 (5)

Series vs. NJIT: Utah Valley leads, 2-0

2006-07 overall record: 22-7

Returning/lost (starters): 6(1)/4(4)

**UNIVERSITY OF VERMONT**

Nov. 20, 7 pm, Fleisher Athletic Center

General Information

Location: Burlington, VT

Founded: 1791

Enrollment: 9,040

Nickname/colors: UVM/Green and Gold

Home Court (capacity): Patrick Gymnasium (3,266)

Conference: America East

President: Dr. Daniel Mark Fogel

Director of Athletics: Dr. Robert Corran

Sports Information

Basketball Contact: Ben Dickie

Office Phone: 802-656-1188

Email: bdickie@uvm.edu

Men's Basketball

Head Coach (alma mater, year): Mike Lonergan (Catholic '88)

Career record (years): 289-113 (14)

Record at school (years): 38-25 (2)

Series vs. NJIT: No previous meetings

2006-07 overall/conference (finish): 25-8/15-1 (1st)

Postseason: 2007 America East Champions; 2007

NIT – lost to Kansas State, 59-57 in the first round

Returning/lost (starters): 9(3)/5(2)



BY CAR

New Jersey Turnpike: Driving North from South Jersey: NJ Turnpike to Exit 13A Newark Airport. After toll booth stay to left follow signs to Rt. 1 & 9 North. You will merge onto Rt. 1 & 9 North. Airport will be on right. Follow signs for downtown Newark and Rt. 21 North-(left lane exit ramp). Downtown Newark will be in front of you. Follow Rt. 21 North (McCarter Highway). Turn left on Raymond Blvd. Follow Raymond Blvd. past Warren St. traffic light (Raymond Blvd. becomes Lock St.) Fleisher Athletic Center & Lubetkin Field will be on your right.

New Jersey Turnpike: Driving South from North Jersey: Take exit 15W to Route 280 West. Then follow Route 280 West directions.

Route 280 West: After drawbridge, take Exit 15A (Rt. 21 South - McCarter Highway). Follow Rt. 21 South to Raymond Blvd. Turn right on Raymond Blvd. Follow Raymond Blvd. past Warren St. traffic light (Raymond Blvd. becomes Lock St.) Fleisher Athletic Center & Lubetkin Field will be on your right.

Route 280 East: Take Exit 15 (Rt. 21 South - McCarter Highway). Follow Rt. 21 South to Raymond Blvd. Turn right on Raymond Blvd. Follow Raymond Blvd. past Warren St. traffic light (Raymond Blvd. becomes Lock St.) Fleisher Athletic Center & Lubetkin Field will be on your right.

Garden State Parkway (North & South bound): Take exit 145 to Route 280 East, then follow Route 280 East directions.

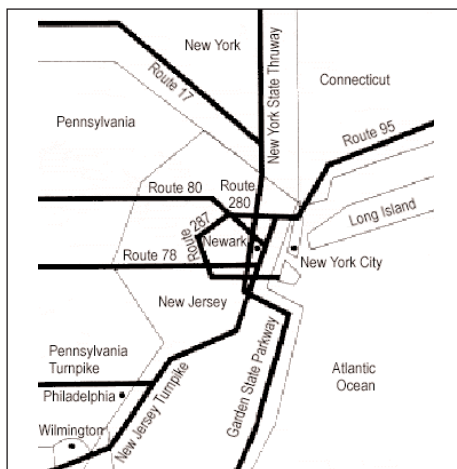
Route 1 & 9 North & South: Take exit marked Newark, Rt. 21 North. Follow Rt. 21 North (McCarter Highway). Turn left on Raymond Blvd. Follow Raymond Blvd. past Warren St. traffic light (Raymond Blvd. becomes Lock St.) Fleisher Athletic Center & Lubetkin Field will be on your right.

Route 78 East: Take Route 78 East to Rt. 21 North. Turn left on Raymond Blvd. Follow Raymond Blvd. past Warren St. traffic light (Raymond Blvd. becomes Lock St.) Fleisher Athletic Center & Lubetkin Field will be on your right.

Route 22 East: Take Route 22 East to Route 21 North. Turn left on Raymond Blvd. Follow Raymond Blvd. past Warren Street Stop Light and Fleisher Athletic Center & Lubetkin Field will be on your right.

Route 21 North: Follow Rt. 21 North to Raymond Blvd. Turn left onto Raymond

Blvd. Follow Raymond Blvd. past Warren St. traffic light (Raymond Blvd. becomes Lock St.) Fleisher Athletic Center & Lubetkin Field will be on your right.



Route 21 South: Follow Rt. 21 South (McCarter Highway) to Raymond Blvd. Turn Right on Raymond Blvd. Follow Raymond Blvd. past Warren St. traffic light (Raymond Blvd. becomes Lock St.) Fleisher Athletic Center & Lubetkin Field will be on your right.

New York Thruway: Thruway to Exit 14A, Garden State Parkway. Follow Garden State Parkway directions above.

George Washington Bridge: NJ Turnpike South to Exit 15W. Follow Route 280 West directions above.

Lincoln Tunnel: West on Rt. 3 to Rt. 21 South. Turn right onto Raymond Blvd. Follow Raymond Blvd. pass Warren Street Stop Light and Fleisher Athletic Center & Lubetkin Field will be on your right.

From Brooklyn, Queens and Long Island: Take Verrazano-Narrows Bridge (Interstate 278) and follow 278 across Staten Island. Cross Goethels Bridge. Follow signs to New Jersey Turnpike North and follow New Jersey Turnpike directions above.

OTHER TRANSPORTATION SYSTEMS

Newark International Airport: Five miles from the NJIT campus. A minibuss (Newark Airlink) or taxi service connects the airport with Penn Station in Newark. Bus, city subway, and taxi connections may be obtained at the station.

Newark Penn Station: Connections to the NJIT campus may be made by bus, city subway, or taxi.

Morris & Essex Broad Street Station: A

five-block walk to the NJIT campus via King Boulevard to Central Avenue. Taxi service is also available

Newark City Subway: From Penn Station in Newark, take the Warren Street stop for the NJIT campus.

DOWNTOWN HOTELS

Comfort Suites

1348 McCarter Highway, Newark
973/481-5200

Hampton Inn & Suites Newark Riverwalk

100 Passaic Avenue, 973/483-1900

Hilton Newark Gateway

Gateway Center, Raymond Blvd. & McCarter Highway, 973/622-5000

Robert Treat Hotel

50 Park Place, Newark, 973/622-1000

HOTELS NEAR NEWARK AIRPORT

Best Western Newark Airport West

101 International Way, Newark
973/621-6200

Courtyard by Marriot Newark Liberty International Airport

600 Route 1 & 9, Newark, 973/643-8500

Days Inn Newark 450 Rt.1 South (near Haynes Ave.), Newark, 973/242-0900

Fairfield Inn & Suites Newark Liberty International Airport 618 Rt.1 & 9 South, Newark, 973/242-2600

Four Points by Sheraton Newark Airport 901 Spring St., Elizabeth, 908/527-1600

Hampton Inn Newark Airport 1128-38 Spring St., Elizabeth 908/355-0500

Hilton Newark Airport 1170 Spring St., Elizabeth, 908/351-3900

Holiday Inn Newark Liberty International Airport 160 Frontage Rd., Newark, 973/589-1000

Marriott Newark Liberty International Airport, Newark, 973/623-0006

Ramada Inn Newark Liberty International Airport 550 Rt.1 & 9 South, Newark, 973/824-4000

Sheraton Newark Airport Hotel 128 Frontage Rd., Newark, 973/690-5500

Wyndham Newark Airport 1000 Spring St., Elizabeth, 908/436-4600



Shannon Abraham
Operations Manager
(973) 596-6406
Abraham@njit.edu



Amanda Albright
Assistant Athletic Trainer
(973) 596-3623



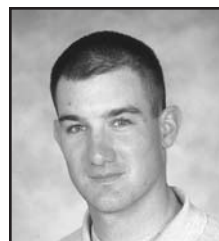
Adalberto M. Alonso
Head M/W Track & Field
Head M/W Cross Country
(973) 596-3636
alonso@njit.edu



Phil Baboulis
Head Women's Tennis
Head Men's Tennis
(973) 596-3636
pbtennis@optonline.net



Joe Caiola
Asst. Director of Athletics/
Business & Facilities
(973) 642-7224
caiola@adm.njit.edu



Brian Callahan
Head Baseball
(973) 596-5827
callahan@njit.edu



Tim Camp
Asst. Director of Athletics
Sports Information
(973) 596-8461
timothy.camp@njit.edu



Jim Casciano
Head Men's Basketball
(973) 596-5727
casciano@adm.njit.edu



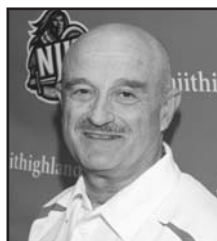
Dr. Roy Cornely
Faculty Athletics Rep.
(973) 596-3537
cornely@adm.njit.edu



Duane Felczak
Asst. Director of Phys. Ed.
(973) 596-3637
felczak@adm.njit.edu



Lenny Kaplan
Director of Athletics
(973) 596-3636
kaplan@adm.njit.edu



Yefim Litvan
Head Men's Fencing
Head Women's Fencing
(973) 596-8490
litvan@njit.edu



Pedro Lopes
Head Men's Soccer
(973) 596-5219
pedro.j.lopes@njit.edu



Margaret McKeon
Head Women's Basketball
(973) 596-3633
margaret.m.mckeon@njit.edu



Ryan McNeil
Head Men's Volleyball
Head Women's Volleyball
(973) 596-5380
mcneil@adm.njit.edu



Risa Ott
Assistant Athletic Director
of Compliance
(973) 596-3181
ott@admin.njit.edu



Michelle Paulter
Receptionist
(973) 596-3636
mlp2@njit.edu



Stephanie Pillari
Asst. Sports Information Director
(973) 596-8324
pillari@adm.njit.edu



Alyssa Radu
Head Women's Soccer
(973) 596-2928
radu@adm.njit.edu



Eric Rasmussen
Head Men & Women's Swimming
(973) 596-5229
rasmussen@njit.edu



Alexis Schug
Associate Athletic Director/
Senior Woman Administrator
(973) 596-8452
schug@njit.edu



Drew VanDam
Head Athletic Trainer
(973) 596-3623
drew.j.vandam@njit.edu



Jonathan Walker
Front Desk Attendant
Equipment Specialist
(973) 596-5730



Tim Wuorinen
Coordinator for Compliance
and Student Athlete Services
(973) 596-5278
wuorinen@adm.njit.edu

Name	Grad. Year	Contribution	Sport(s)	Years	Year of Induction
BAUDER, Fred "Coach"	--	Coach	M-Basketball	1932-61	1989
BAKUN, Andrew I.	1982	Athlete/Asst. Coach	M-Soccer	1978-81/90-91	2005
BAKUN, Myron	1967	Athlete	M-Soccer	1964-66	1991
BLUM, Raymond E.	1950	Distinguished Alum.	Speedskating/Cycling	--	1996
BORJA, Hernan "Chico"	1981	Athlete	M-Soccer	1977-80	1986
BORNAKO, Gregory "Egor"	1970	Athlete	M-Fencing	1966-70	1987
BOWSER, Hamilton V.	1952	Athlete	M-Fencing	1948-52	1989
BRADLEY, Thomas	1978	Athlete	M-Swimming	1974-78	1990
BROWN, Andrew D.	1982	Athlete	M-Soccer	1956-78	2006
CRIMMINS, David	1952	Athlete	M-Fencing	--	2007
CRUZ, Edward	1963	Athlete	M-Soccer	1959-62	1995
DAWSON, Marilyn E.	1986	Athlete	WVB/WBKB/SB	1982-86	1991
DeNICOLA, Carmine P.	1978	Athlete	Baseball	1975-78	2005
DeVITO, Louis	1960	Athlete	M-Soccer/M-Fencing	1956-60	1992
DIAS, Joe A.	1977	Athlete	M-Soccer	1973-76	1993
DRURY, Eugene M.	1963	Athlete	M-Tennis	1960-63	1988
ENG, Katherine	1993	Athlete	W-Volleyball	1989-92	2007
ETIENNE, Yves	1979	Athlete	M-Volleyball	1976-78	1990
FEHN, Gilbert F.	1940	Athlete	M-Basketball/M-Tennis	1936-40	1992
FITZGERALD, Joseph M.	--	Coach /Asst. Coach	M-Basketball	1961-66/52-61	1986
FLEISHER, Seymour "Zoom"	1951	Athlete	M-Basketball	1947-51	1992
GAGLIARDO, Salvatore A.	1985	Athlete	M-Basketball	1981-85	1995
GALLAGHER, Thomas G.	1985	Athlete	M-Basketball	1981-85	1991
GIOVANNOLI, Arnold L.	1953	Athlete	M-Basketball	1950-53	1993
GOLDRICK PITT, Elizabeth M.	1990	Athlete	WVB/SB/WBKB/WTen	1985-90	1995
GRUENEWALD, Wendy A.	1997	Athlete	WBKB/SB/WVB/WSoc	1992-96	2003
HAASE, Jay W.	1975	Athlete	M-Fencing	1971-75	1988
HAMMOND, Kenneth W.	1979	Athlete	M-Soccer	1974-77	2003
HANDWERKER, Andy	1963	Athlete	M-Soccer	1959-62	2002
HAUSSER, Paul C.	--	Administrator	--	1953-91	1990
HUBEY, Ali	1972	Coach	Fencing /Baseball	1954-88/53-72	
HURTADO, Fabian	1975	Athlete	M-Soccer	1968-71	1990
IRIS, Herb	1951	Athlete	M-Soccer	1970-73	1987
KAMINSKY, Nicholas J.	1951	Benefactor	--	--	2007
KASBARIAN, Raymond P.	1978	Athlete	Baseball	1975-78	2006
KETZNER, Robert Shelby	1966	Founder/Athlete	Judo	1962-66	1989
KHOWAYLO, Alex	--	Coach	Rifle	1962-86	1987
LUBETKIN, Charles "Tudy"	1969	Athlete	M-Soccer	1960-63	1996
LYNCH, Robert K.	1953	Athlete	M-Basketball/M-Track	1949-52	1994
MacDONALD, Dan	1984	Athlete/Coach	M-Fencing	1977-80/86-91	1993
OLSEN, Richard J.	1984	Athlete	Baseball	1981-84	1991
OLSON, George R.	1969	Athlete	M-Basketball	1965-69	1988
PAULIUS, Raymond V.	1977	Athlete	Baseball	1974-77	1987
ROGERS, Warren E.	1985	Athlete	M-Soccer	1980-83	2006
ROMULUS, Rudy	1988	Athlete	M-Basketball	1983-87	1993
SARLO, Paul A.	1991	Athlete	M-Volleyball	1988-91	1996
SCHMID, John "Gene"	1992	Athlete	Baseball	1989-91	2005
SCHMID, John "Gene"	--	Coach/Asst. Coach	Baseball	1973-97/68-72	2002
SIMON, J. Malcolm	--	Coach	M-Soccer	1955-83	1994
SKURLA, Peter J.	--	Athletics Director	--	1983-94	
SWANSON, Robert F.	1941	Athlete	Bowling	1937-41	1992
TAETZSCH, Robert	--	Athletics Director	--	1947-82	1986
TAETZSCH, William	1952	Athlete	M-Fencing	--	2007
TOSATO, Lawrence P.	1952	Athlete	M-Fencing	--	2007
TUBELLO, Jeffrey	1956	Athlete	M-Basketball/Baseball	1952-56	1987
VAN WRIGHT, Nevea	1976	Athlete	Rifle	1972-76	1988
WALSH, John J.	1997	Athlete	W-Basketball	1991-96	2005
WASNIEWSKI, Frank	1966	Athlete	MSoc/MBKB/Baseball	1962-66	1986
WELGOS, Bob	1980	Athlete	M-Tennis	1977-80	1990
WOROBEC, Myron S.	1962	Athlete	M-Basketball/Bowling	1959-62	2005
YONEZUKA, Yoshisada	1966	Athlete	M-Soccer	1962-65	1994
ZORN, Werner	--	Founder/Coach	Judo	1962-??	1991
	1962	Athlete	M-Soccer	1958-61	1988

1960 Men's Soccer Team

1981-82 Men's Basketball Team

1982 Baseball Team

NAIA co-national champion 1988

NJIT's first ECAC and IAC champion 1990

NJIT's second ECAC and IAC champion 1993



Hatch Mott MacDonald
CONSULTING ENGINEERS

Headquarters: Millburn, NJ
offices across North America
800.832.3272
www.hatchmott.com

Consulting + Engineering + Technology + Construction

Syska Hennessy Group, Inc.
502 Carnegie Center
Princeton, NJ 08540
Tel: 609.378.0235
Fax: 609.936.0746
www.syska.com



SYSKA HENNESSY GROUP

www.syska.com



ikn.5 architects

864 Mapleton Road | Princeton, NJ 08540
T 609.919.0099 | F 609.919.0088 | www.ikn5architects.com



McCARTER & ENGLISH
ATTORNEYS AT LAW

Basam E. Nabulsi
203.399.5920 fax 203.399.5820
bnabulsi@mccarter.com

McCarter & English, LLP
Financial Centre, Suite A304
695 East Main Street
Stamford, CT 06901-2138
203.399.5900 fax 203.399.5800
www.mccarter.com

McElroy, Deutsch, Mulvaney & Carpenter, LLP
ATTORNEYS AT LAW

1300 Mount Kemble Avenue
Morristown, New Jersey 07962
(973) 993-8100

Newark, NJ Ridgewood, NJ Philadelphia, PA New York, NY Denver, CO

Peter DeBenedetto
President

pdebenedetto@resourcenj.com
Direct Line: 973.625.0715 Ext. 44
Mobile: 908.246.7806

Re:Source
New Jersey, Inc.

66 Ford Road, Suite 141
Denville, NJ 07834
Phone: 973.625.0715
Fax: 973.625.1482

Commercial Flooring www.resourcenj.com

CONNELL FOLEY LLP
connellfoley.com

Roseland
85 Livingston Avenue
Roseland NJ 07068
973-535-0500
973-535-9217 F

Jersey City
Harborside
Financial Center
2510 Plaza Five
Jersey City NJ 07311
201-521-1000
201-521-0100 F

New York
888 Seventh Avenue
New York NY 10106
212-262-2390
212-262-3118 F

Philadelphia
1500 Market Street
12th Floor East Tower
Philadelphia PA 19102
215-246-3403
215-665-5727 F

CONNELL FOLEY

ATTORNEYS AT LAW

We Proudly Support New Jersey Institute of Technology's Basketball Program



W. "Will" N. Cotton
President

P.O. Box 250
Atlantic Highlands, NJ 07716

Tel: (732) 872-8782
Fax: (732) 872-0345

PLEASANT HILL CONSULTANTS

34 PLEASANT HILL RD. • SUCCASUNNA, NJ 07876
(973) 927-0346

Cretex Pressure Pipe, Inc.



Ron Dubrow
Senior Vice President-Sales
rondubrow@prestigegraphics.net

Corporate Offices
2410 Iorio Street
Union, NJ 07083
Ph: 908.964.6000 • Ext. 202
Fx: 908.964.0555

South Jersey Offices
1310 Roller Road
Ocean, NJ 07712
Ph: 732.493.5618
Fx: 732.493.8553

www.prestigegraphics.net



GASES INC.

Welding Equipment
and Supplies

STEVEN C. DE FILLIPPS



1100 HARRISON AVE.
KEARNY, N.J. 07032
201-998-7800
FAX: 201-998-5243

114 EGEL AVE.
MIDDLESEX, N.J. 08846
732-469-3515
FAX: 732-805-0881

(973) 256-8316 • (973) 256-8434 Fax
1-800-377-8316 Outside N.J.
e-mail: bethwood65@aol.com

Frank Pombo's Bethwood



CATERING AT ITS FINEST
WEDDINGS ARE OUR SPECIALTY
BANQUETS - SUNDAY BRUNCH

38 LACKAWANNA AVE. • P.O. BOX 303 • TOTOWA, N.J. 07511



Advanced Electronic Solutions, Inc.

Marc A. Franchino
Branch Manager

Tel: 973-887-3500
Fax: 973-887-3800

mfranchino@nyaes.com

Tel: 718-461-2600
Fax: 718-461-4060



• Access Control • Alarm • CCTV • Fire Systems
• Covert & Countermeasures • Intercom • Turnstiles

PLUMBING LICENSE 9440

BINSKY SERVICE

PROFESSIONAL HVAC SERVICES

Mike Rapp
President

281 CENTENNIAL AVENUE
PISCATAWAY, NEW JERSEY 08854
TELEPHONE: 877-4-BINSKY

TELEPHONE: 732 369-0100 X502
FAX: 732 369-0200
E-MAIL: mrapp@binsky.com

Good Luck Highlanders

FROM YOUR FRIENDS AT
Stobb's Printing Co.

18 WASHINGTON ST • BLOOMFIELD, NJ • 973-748-4441

DFGibson Architects P.C.

David Gibson AIA

40 Clinton Street, Sixth Floor
Newark, New Jersey 07102
P: 973.642.3001 F: 973.642.6343
dgibson@dfgibsonarchitects.com

**LIKE YOU, WE
SUPPORT THE TEAM.
YOU HAVE BETTER
SEATS, THOUGH.**

NJIT
New Jersey's Science &
Technology University

BOOKSTORE

Campus Center • 973-596-3200

efollett.com
ONLINE. ON CAMPUS.

DAN CURRIER

Benjamin Moore
Paints

COMMERCIAL PAINTERS SUPPLY CORP.

PAINT BRUSHES & ROLLERS • MASKING PAPER & TAPE
SCRAPERS & DRYWALL TOOLS • DROPCLOTHS • PLASTIC SHEETING
SPRAY PARTS & EQUIPMENT • LADDERS & SCAFFOLDING
CLOTHING • SAFETY EQUIPMENT • WALLCOVERING EQUIPMENT

61 Grand Avenue • Palisades Park, NJ 07650 • www.cpsmall.com

TEL: (201) 945-8015
(800) 443-1189
FAX: (201) 945-5846

New States
CONTRACTING
Specialty Insulation Contractors

2400 Main Street Extension, Suite 10 Phone (732) 525-0100
Sayreville, NJ 08872 Fax (732) 525-0044
www.newstatecontracting.com

Schindler Elevator Corporation
20 Whippany Road Suite 225
P.O. Box 1935
Morristown, NJ 07962-1935
(973) 397-3666
FAX: (973) 397-3710
Steven_Ryan@us.schindler.com
www.us.schindler.com

Steve Ryan
District Manager

ISO 9001 CERTIFIED

Schindler

Empire
LUMBER & MILLWORK CO.
377 FRELINGHUYSEN AVENUE • PO BOX 2070
NEWARK, NEW JERSEY 07114
(973) 242-2700
FAX (973) 242-3970
DESIGNERS & MANUFACTURERS OF ARCHITECTURAL WOODWORK
HOLLOW METAL DOORS & FRAMES • WOOD DOORS
CUSTOM FABRICATION • ARCHITECTURAL HARDWARE
COMMERCIAL & RESIDENTIAL BUILDING SUPPLIES

V.A.L. FLOORS, INC.

• Ceramic
• Marble
• Wood
• Carpet
• Resilient

555 Gotham Pkwy (201) 617-7900
Carlstadt, NJ 07072 (212) 690-7688
Fax (201) 617-0508

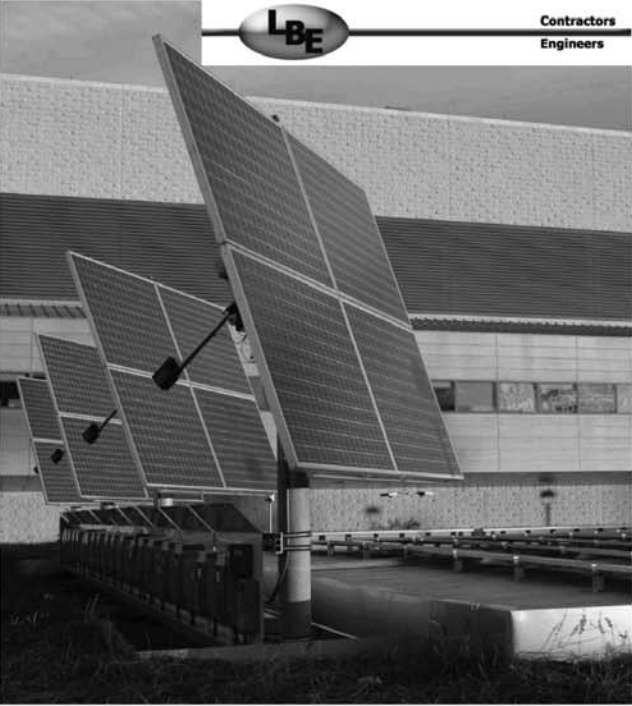
JAMES KURPIEL INC.
19 ORCHARD STREET, HACKENSACK, NEW JERSEY 07601

- STRIPING PARKING LOTS • BLACK TOP SEAL COATING
- ASPHALT CRACK FILLING • POTHOLES REPAIRED
- PARKING LOTS CLEANED • INSTALLATION OF PARKING BUMPERS

JAMES KURPIEL OFFICE (201) 342-3170
PRESIDENT FAX (201) 342-0415

LB Electric Co., LLC
211 Warren St., Suite 418, Newark, NJ 07103
Tel: 973-565-0060 Fax: 973-565-9787
MBE, SBE, DBE Certified

Renewable Energy in the City of Newark



GraybaR®

343 WALSH DR
PARSIPPANY, NJ 07054
973-404-5555
DAVID PFERRER, BRANCH MANAGER
www.graybar.com



JIM CASCIANO
cass-ee-AH-no
Head Coach



WENDELL ALEXIS
Assistant Coach



STEVE BRODZINSKI
brod-ZIN-skee
Assistant Coach



DAVID GRANDE
GRON-day
Assistant Coach



00 DAN STONKUS
STON-kus
C 6-9 245 So
Monmouth Jct., NJ



1 TYLER EPPS
G 5-11 175 Fr
Charlottesville, VA



5 COURCY MAGNUS
COR-see
G 6-2 177 Sr
Plymouth Meeting, PA



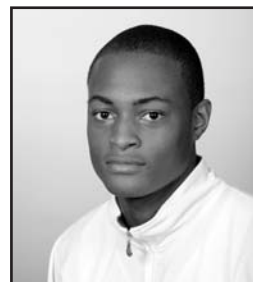
10 REY JEFFERSON
Rey sounds like Ray
G 6-2 190 Fr
Budd Lake, NJ



11 PAULIUS SKEMA
PAUL-ee-us SKEE-ma
F 6-8 204 Fr
Vilnius, Lithuania



12 BRENDON LYN
G 5-9 175 Fr
Mt. Vernon, NY



13 JHERYL WILSON
ja-RELL
G 6-3 185 Fr
Irvington, NJ



20 JOHNATHAN DIXON
F 6-4 215 Jr
North Brunswick, NJ



23 ANTHONY COLLIER
G 6-4 175 Fr
Farmington, MI



24 KRAIG PETERS
Captain
G 6-4 191 Sr
Mt. Laurel, NJ



32 KYLE EDWARDS
F 6-6 225 Jr
Fayetteville, GA



33 BRETT JOHNSON
F 6-4 213 Sr
Pennsauken, NJ



35 NESHO MILOSEVIC
NEH-sho mil-OH-se-VICH
F 6-8 245 Jr
Bar, Montenegro



THE 2007-08 NJIT MEN'S BASKETBALL TEAM

Top (L-R): Assistant Coach Wendell Alexis, Head Team Manager Purven Shah, Brett Johnson, Kyle Edwards, Nesho Milosevic, Dan Stonkus, Paulius Skema, Gary Garris, Justin Garris, Assistant Coach David Grande, Assistant Coach Steve Brodzinski

Bottom (L-R): First Assistant Manager Morris Halton-Lowery, Brendon Lyn, Rey Jefferson, Tyler Epps, Courcy Magnus, Jheryl Wilson, Anthony Collier, Kraig Peters, Johnathan Dixon, Head Coach Jim Casciano



Men's Basketball Schedule 2007-08

Date	Day	Opponent	Time
NOVEMBER			
10	Sat.	MANHATTAN	2:00pm
2007 Dick's Sporting Goods NIT Season Tip-Off (at Washington - Seattle, WA)			
13	Tue.	at Washington	11:00pm
14	Wed.	Utah/High Point	7:30pm/10:30pm
20	Tue.	VERMONT	7:00pm
24	Sat.	AMERICAN	2:00pm
26	Mon.	at Lehigh	7:00pm
28	Wed.	at Rider	7:30pm
DECEMBER			
1	Sat.	at Maine	12:00pm
3	Mon.	at Lafayette	7:00pm
6	Thu.	ARMY**	7:00pm
8	Sat.	at Fordham	1:00pm
10	Mon.	at Stony Brook	7:00pm
13	Thu.	RUTGERS**	7:00pm
UCF Holiday Classic (at UCF - Orlando, FL)			
30	Sun.	at UCF	7:00pm
31	Mon.	LIU/Texas-Pan American	4:30pm/7:30pm

Date	Day	Opponent	Time
JANUARY			
2	Wed.	at Navy	7:00pm
5	Sat.	at Penn	7:00pm
12	Sat.	COLUMBIA	2:00pm
15	Tue.	CORNELL**	8:00pm
19	Sat.	at Chicago State	4:00pm (CT)
26	Sat.	Alumni Day**	11:00am
26	Sat.	TEXAS-PAN AMERICAN**	1:00pm
29	Tue.	LOYOLA (MD)	7:00pm
FEBRUARY			
2	Sat.	UTAH VALLEY	2:00pm
4	Mon.	LONGWOOD	7:00pm
9	Sat.	at Texas-Pan American	7:00pm (CT)
13	Wed.	at LaSalle	7:00pm
16	Sat.	CHICAGO STATE	4:00pm
18	Mon.	at Longwood	7:00pm
23	Sat.	at Utah Valley	2:05pm (MT)

Head Coach: Jim Casciano (Drexel '77) **Assistant Coaches:** Wendell Alexis, Steve Brodzinski, David Grande

Home matches in **BOLD BLACK CAPS** at Estelle and Zoom Fleisher Athletic Center. **Denotes home games at the Prudential Center. Schedule is subject to change - visit www.njithighlanders.com for updated times.