

NEW JERSEY INSTITUTE OF TECHNOLOGY



NJIT
New Jersey Institute of Technology
A Public Research University

CENTRAL ATLANTIC
CACC
COLLEGIATE CONFERENCE



2001-02 MEN'S BASKETBALL



NJIT FACTS

Location	University Heights, Newark, NJ 07102
Founded	1881
Enrollment	5,645 full-time undergraduate
Nickname	Highlanders
Colors	Red and White
President	Dr. Saul K. Fenster
Director of Athletics	Lenny Kaplan (St. John's '88)
Athletic Department Phone	(973) 596-3636
Athletic Department URL	www.njit.edu/athletics
Head Men's Basketball Coach	Jim Casciano (Drexel '74)
Record – All Colleges (Years)	196-191 (15)
Record – Four-Year Schools (Years)	146-172 (12)
Office Phone	(973) 596-5727
Best Time to Reach	mornings
Office FAX	(973) 596-8440
e-mail	casciano@adm.njit.edu
Assistant Coaches	Anthony Walker, Jeff Sonnema, Rich Spottswood
Office Phone	(973) 596-5216. 5217
Captains	Matt Martins, Mars Mellish
Manager	William Abanyie
Affiliations	NCAA II, ECAC
Conference	Central Atlantic Collegiate (since 2000-01)
Home Arena (cap.)	Entwisle Gymnasium (1,500)
1999-2000 Record	14-14
Conference Record (finish)	10-10 (T-6th/11)
Postseason	ECAC Semis
Starters Returning/Lost	4/1
Letterwinners Returning/Lost	7/2
Coordinator of Sports Information Services	Mark Mentone
Office Phone	(973) 596-8324
Home Phone	(973) 743-2658
FAX	(973) 596-8440
e-mail	mentone@adm.njit.edu
Results Hotline	(973) 596-5555

Table of Contents

2000-01 Quick Facts	IFC
2000-01 Season Outlook	2
President Saul K. Fenster	3
Vice President for Academic and Student Services Joel Bloom	3
Senior Administrator for Athletics Lenny Kaplan	3
Head Coach Jim Casciano	4
"The Total Program"	5
Assistant Coaches	6
2001-02 Roster	8
Player Profiles	10
1999-2000 Statistics and Results	16
About NJIT	18
About Newark	20
Athletics Facilities	21
Athletics Communications	22
Modern School Records	23
All-Time Results	24
Opponent Information	28
Directions to NJIT	32
Athletics & Physical Education Staff Directory	33
NJIT Alumni Athletic Hall of Fame	34
Central Atlantic Collegiate Conference	35
2001-02 Schedule	OBC

MEDIA INFORMATION

This guide is designed to assist the media in their coverage of New Jersey Institute of Technology men's basketball. The NJIT sports information services department will provide an official NCAA box score within 15 minutes after the conclusion of each home game, with play-by-play available upon request.

All requests for interviews with players and coaches must be made through the sports information office, 973-596-8324. Following games, Coach Casciano and selected players will be available on the floor following a 10-minute cooling-off period. All visiting radio broadcast requests should be made at least two weeks in advance.

CREDITS

The 2001-02 NJIT Men's Basketball Guide is a production of the NJIT sports information services department, Mark Mentone, coordinator. Writing and design by Mark Mentone on Adobe PageMaker 7.0. Editorial assistance provided by Jim Casciano, Joe Caiola '80, and Carol Pilla. Graphic design consultation from Johanna Moroch. Additional research by Jon Coleman '03 and André Narvaéz '03. Except where indicated, photography by PM Studios, Edison, New Jersey. Printing by Prestige Graphics, Union, New Jersey.



Juniors Joe Accurso (44) and Ahmad Rasool (5)

"NJIT Basketball – The Best of Both Worlds"



NJIT's Gutenberg Information Technologies Center

ON THE COVER:

Left: Sophomore forward
Demand Cowins;

Right: Junior guard
Ahmad Rasool.

The New Jersey Institute of Technology men's basketball program has a different head coach for the first time in 23 years. The new man in town, **Jim Casciano**, feels that change is inevitable in such situations, even on a Highlander squad with eight returning letterwinners.

"When a coach comes in new, he will judge success differently," Casciano said. "Everyone is like a freshman, because when the coach and the system are new, the whole team goes through freshman-like growing pains."

Therefore, Casciano's main goal for the upcoming season is simply to get better as the year goes on.

"It's hard to say how good we'll be," he said. "If we can establish a solid work ethic and understand the commitment necessary to compete at this level, the wins and losses will take care of themselves. How long that process takes is anyone's guess, but if our attitude continues to improve every day, by the second half of the season we can be the type of team people don't want to play."

"Ultimately, my goals for the program are to be in the upper echelon of the (Central Atlantic Collegiate) Conference and to be competitive nationally."

BACKCOURT

In the preseason, junior **Ahmad Rasool** (13.9 ppg, 4.1 rpg, 4.8 apg, 2.6 spg in 2000-01) and graduate student **Mars Mellish** have established themselves as the lead guards. Rasool played his freshman season at Wheeling Jesuit University before transferring to NJIT last year. Mellish, a co-captain, is a 2001 graduate of Manhattan College, and averaged 6.7 points per game over three seasons of play.

"Ahmad is a quick, explosive guard with good scoring ability," Casciano said. "Mars has emerged quickly because of his Division-I experience and being older than the other guys. He can score in many different ways, defend well, and has the intangibles of a leader."

Juniors **Olivier Ehyeremendy** (1.5 ppg, 0.7 apg), **Justin Feintuch** (1.3 ppg), and co-captain **Matt Martins** (1.7 ppg) are competing for roles in the playing rotation.



Demond Cowins (white shirt, foreground) and **Ahmad Rasool** (background) were NJIT's top scorers in 2000-01.

FRONT COURT

Sophomores **Demond Cowins** and **Phil Renaud** are the frontrunners at center and power forward. Cowins led the team in scoring (15.1 ppg), rebounding (7.0 pg) and field-goal percentage (.586) as a rookie, while Phil Renaud put up 13.8 points and 6.3 rebounds per contest while shooting .535 from the field.

Depth comes from juniors **Joe Accurso** and transfer **Yung-Kwang Kiely**. Accurso played in all 28 games last year, with his 11 starts coming mostly in the season's latter stages.

"Demond has the most talent on our team, and he has gotten stronger," Casciano said. "He has the talent to be an all-conference-type player. Phil plays much bigger than his size, and has an uncanny ability to

score around the basket. Joe is a dedicated, hard-working, serviceable post player who will look to expand his game. And Yung gives us size, strength, and an ability to score facing the basket."

Youth will reign at the small forward spot. Sophomore **Ricky Urban** (0.3 ppg, 0.9 rpg) moves over from shooting guard for a spirited competition with freshmen **Kevin Burns** and **Randle DeFalco**.

DR. SAUL K. FENSTER

President

Dr. Saul K. Fenster is the sixth president of New Jersey Institute of Technology. Prior to joining NJIT in 1978, he served in various faculty and administrative capacities at Fairleigh Dickinson University, including six years as provost of the Rutherford campus.

Fenster is a mechanical engineer. He earned a bachelor's degree from the City College of New York, a master's degree from Columbia University and a Ph.D. from the University of Michigan. He has authored and co-authored two textbooks and numerous research papers and technical articles. His industrial experience includes a period as senior research engineer with the Sperry Rand Corporation and as a partner in an industrial consulting firm.

Fenster has served on many statewide task forces, commissions and committees. He is currently a board member of the New Jersey Commission on Science and Technology, and a past chair of the Research and Development Council of New Jersey.



DR. JOEL BLOOM

Vice-President for Academic and Student Services

Dr. Joel Bloom has worked at NJIT since July 1990. In his current position of vice-president for academic and student services, he is responsible for nine divisions of the university, including physical education and athletics.



Bloom also serves as the dean of the Albert Dorman Honors College, which enrolls 460 students from 15 states and several foreign countries with an average SAT score of 1322.

Prior to NJIT, Bloom spent seven years as assistant commissioner in the New Jersey Department of Education for the division of general academic education. He currently chairs the State College Advisory Board and the Newark Consortium Board for Pre-College Education.

Bloom earned bachelor's and master's degrees from Hunter College, and holds a master's and doctorate from Columbia University Teachers College.

LENNY KAPLAN

Senior Administrator for Athletics, Physical Education, Recreation and Intramurals

After serving 11 years in the athletic department at Division-I Manhattan College, **Lenny Kaplan** was appointed in August 2000 to NJIT's newly-created position of senior administrator for athletics, physical education, recreation and intramurals.



Kaplan is a 1988 graduate of St. John's University with a degree in athletic administration. After three years as Manhattan's director of operations, he spent the last eight as an assistant athletic director. At NJIT, he reports to Dr. Joel Bloom, vice-president for academic and student services.

Kaplan is a native of Commack, Long Island, and attended Commack High School South. He resides in Manhattan with his wife, Nancy, and their sons, Michael and Joshua.

Coaching Staff

JIM CASCIANO

Head Coach

Jim Casciano brings his reputation for building winning programs to NJIT for the 2001-02 season.

Casciano comes to NJIT after winning the ECAC Division III South tournament last year with King's College in Wilkes-Barre, Pennsylvania. The Monarchs also earned their first Middle Atlantic Conference playoff berth since 1993-94 en route to a 19-9 overall record.

Casciano, 49, spent five seasons at King's. He had just 12 victories in his first three years before the Monarchs improved to 13-11 in 1999-2000, their first winning campaign out of the previous six. At NJIT, he replaces the program's all-time winningest coach, Jim Catalano, who was 433-176 in 22 seasons, including five NCAA appearances and three ECAC titles, before resigning in April.

"I came to NJIT for the challenge," Casciano said. "I wanted the opportunity to once again build a program, and to work with scholarship athletes. NJIT has great academics, and an athletic department that has a commitment to its athletes and wants to be successful."

Casciano has coached in all three divisions of the NCAA as well as at the NAIA and junior college levels. As a head coach, he has become best-known for rebuilding struggling programs. In his only season at Castleton State (Vt.) College in 1982-83, he established a school record for victories, going 14-11, and earned a berth in the NAIA tournament.

Casciano then moved on to Division-II St. Michael's College in Winooski, Vermont. After two rebuilding years, his 1985-86 squad went 19-10, earning Casciano Mideast Collegiate Conference coach-of-the-year honors.

The next year, the Purple Knights won the MCC championship and earned the program's first NCAA tournament berth in 20 years. With an overall record of 20-11, it was St. Michael's first 20-win season in 12 years. The Knights were ranked No. 1 nationally in Division II by several publications, including Sports Illustrated, in the 1987-88 preseason.

Casciano compiled four consecutive winning seasons with St. Michael's before leaving after the 1988-89 season. After four years as a Division-I assistant,

he became the head coach at Valley Forge Military College in Wayne, Pennsylvania. In three seasons with the NJCAA school, he compiled a 50-19 record and had five players earn Division-I scholarships.



Casciano began his coaching career as an assistant to Rollie Massimino at Villanova University in 1975. He has also assisted at the University of Delaware, Washington & Lee University, Old Dominion University, and Radford University.

Casciano played collegiately at Drexel University, earning a bachelor's degree in business administration in 1974. He and his wife, Daphne, reside in Basking Ridge, New Jersey.

CASCIANO'S HEAD COACHING RECORD

1982-83	Castleton State	14-11
1983-84	St. Michael's	7-19
1984-85	St. Michael's	7-21
1985-86	St. Michael's	19-10
1986-87	St. Michael's	20-11
1987-88	St. Michael's	17-11
1988-89	St. Michael's	18-10
1993-94	Valley Forge Military	16-9
1994-95	Valley Forge Military	17-6
1995-96	Valley Forge Military	17-4
1996-97	King's	3-20
1997-98	King's	2-22
1998-99	King's	7-17
1999-2000	King's	13-11
2000-01	King's	19-9
Total	15 years	196-191
4-year schools	12 years	146-172

CASCIANO'S COACHING TIMELINE

1974-75	Assistant Coach, Villanova University
1975-76	Assistant Coach, University of Delaware
1977-80	Assistant Coach, Washington & Lee University
1980-82	Assistant Coach, Old Dominion University
1982-83	Head Coach, Castleton State College
1983-89	Head Coach, St. Michael's College
1989-90	Assistant Coach, Radford University
1990-93	Assistant Women's Coach, Temple University
1993-96	Head Coach, Valley Forge Military College
1996-2001	Head Coach, King's College

DEDICATED TO EXCELLENCE

"NJIT: The Total Program"

NJIT's basketball coach, Jim Casciano, has dedicated his coaching philosophy to the development of the total person. In the classroom, on the court, and in everyday life, Casciano believes his student-athletes will develop into well-rounded, purposeful individuals through a commitment to four areas: (1) Teaching Values; (2) Building Dreams; (3) Formula for Success; and (4) the Head Coach – Casciano's individual role. The following is a summary of Casciano's philosophy:

Teaching Values

- Discipline
- Work ethic
- Communications
- Learning
- Caring
- Decision making

Formula for Success

- Recruit good people
- Develop a strong work ethic
- Emphasis on academic achievement
- Develop basketball skills
- Develop broad-based support
- Community involvement
- Create a "family atmosphere"

Building Dreams

- Gain respect
- Build a tradition
- Campus and community support
- 100% graduation rate
- Championship teams
- NCAA post-season play

Head Coach

- Dedication
- Enthusiasm
- Knowledge
- Positive role-model
- Discipline
- Faith
- Family

JIM CASCIANO'S "TEN-STEP APPROACH"

to Academic Success

In his 12 years as a head coach, Jim Casciano has a 100-percent graduation ratio of players who have remained in his program for four years. He credits this to his **"Ten-Step Approach"** to academic success, listed below:

1. Place sincere emphasis on academics.
2. Develop communications with the academic community.
3. The assignment of an assistant coach as academic coordinator, with other coaches serving as academic coaches.
4. Academic Coaches – Time Management Program (Each coach is assigned players and is responsible for monitoring their academic progress. Use of time management sheets and meeting with players individually weekly or bi-weekly).
5. Letters of introduction to professors.
6. Monthly Grade Sheets – Each player must personally have his instructors fill out grade sheets and return them to the academic coordinator.
7. Mandatory Study Hall – Held Monday through Thursday, two hours each day, eight hours per-week. Mandatory for all freshmen, transfer students, and any player with less than a 3.0 GPA.
8. Effective use of tutors, counselors, advisors, and resource materials.
9. Effective use of summer school sessions. Helpful in students' maintaining credits and staying on course to graduate.
10. Emphasis on class attendance and minimizing conflicts with classes as a result of practice, games, and travel.

Coaching Staff

ANTHONY WALKER

Assistant Coach

Anthony Walker joins the NJIT staff after two seasons coaching under Jim Casciano at King's College. He will work with the Highlanders' perimeter players and coordinate recruiting.



Walker enjoyed a stellar collegiate playing career at Division-I Radford University. He graduated in 1997 as Radford's second-all-time leading scorer with 1,601 points and the career assist leader with 510.

As a senior, Walker was a first-team all-Big South Conference selection. He became the first player in Radford history to be invited to the Portsmouth (Va.) NBA pre-draft camp. He was the Big South rookie of the year in 1994.

Walker is a graduate of Linden McKinley High School in Ohio, where he was a two-time all-state selection. He then played one season at Hargrave Military Academy. He resides in Woodbridge, New Jersey.

JEFF SONNEMA

Assistant Coach

Jeff Sonnema joined Dr. James Catalano's NJIT staff almost immediately after graduating from NJIT in 1999 with a bachelor of science degree in management. He has been retained by coach Casciano, for whom his familiarity with the school, the returning players, and the Central Atlantic Collegiate Conference will be a major asset for practice planning and scouting.



Sonnema is a former Highlander MVP in both basketball (1997) and baseball (1999) and was a four-year letterwinner in both sports. He led NJIT in scoring (14.4 ppg) and rebounding (8.5 pg) in 1996-97, and was selected to the New Jersey College Basketball Coaches All-Star Game. He was NJIT's Outstanding Senior Male Athlete in 1998 following his final season of baseball eligibility.

Sonnema is also an assistant baseball coach at NJIT. He lives in North Haledon, New Jersey

RICH SPOTTSWOOD

Assistant Coach

Rich Spottswood has played for Coach Casciano at Valley Forge Military and coached with him at King's College. He brings that experience to NJIT as an assistant coach for the 2001-02 season. Among his responsibilities is the coordination of the players' strength and conditioning programs.



A New Orleans native, Spottswood scored over 1,000 points in two seasons at Valley Forge Military Academy playing for Casciano. He averaged 22.0 points per game for his career and was an Eastern Pennsylvania All-Star. He then earned a scholarship to NAIA Division-I University of Mobile (Ala.), where he finished his playing career with two injury-plagued seasons.

Spottswood was a two-time all-league selection for Archbishop Rummel High School in New Orleans. He received a bachelor's degree in health education from Mobile in 1999, and currently resides in Woodbridge, New Jersey.

WILLIAM ABANYIE

Manager

NJIT sophomore William Abanyie is in his first season as men's basketball team manager.

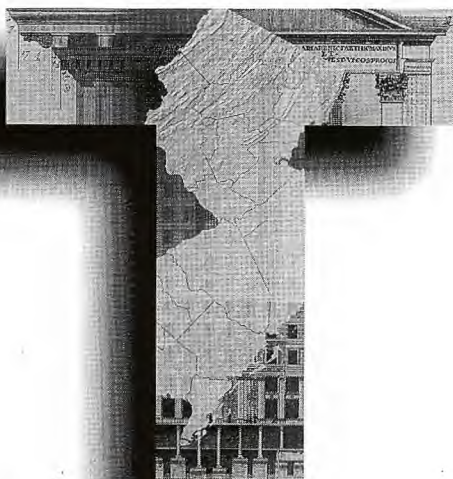


Abanyie, 20, is a 2000 graduate of Willingboro (N.J.) High School. A dean's list student in NJIT's Educational Opportunity Program, he is majoring in professional and technical communications with a grade-point average of 3.1

Abanyie was born in Cape Coast, Ghana. He is the youngest of four children of Tony and Nancey Abanyie of Willingboro.

A Reputation

100 Years In the Making



A century of excellence is an accomplishment to be proud of . . . in any business. At Turner, we are watchful guardians of our reputation for quality, value, service and meeting deadlines and budgets. It is what has generated most of our assignments over the years. Our reputation is why two-thirds of our clients represent repeat business.

Our achievements in New Jersey have been vital in helping build our good name. That is why Turner remains committed to the growth and progress of the Garden State, as well as to continuing to build upon our reputation for excellence.

Turner
Construction
Company

265 Davidson Avenue
Suite 210
Somerset, NJ 08873
732-627-8300
www.turnerconstruction.com

BINSKY SNYDER PROFESSIONAL HVAC SERVICES

Electrical Lic. # 12854 - Plumbing Lic. # 1349

**PREVENTATIVE MAINTENANCE AGREEMENTS
BUILDING AUTOMATION & CONTROL SPECIALISTS
ELECTRICAL & PLUMBING RENOVATIONS
INDUSTRIAL - COMMERCIAL
HEATING & AIR CONDITIONING SERVICE**

24 HOUR EMERGENCY SERVICE

VISIT OUR WEBSITE AT WWW.BINSKYSERVICE.COM

THANKING THE BUSINESS COMMUNITY FOR OVER 15 YEAR'S OF PATRONAGE

Phone 1-877-4-BINSKY
Fax (732) 752-5052

201A Eleventh Street
Piscataway, NJ 08854

2001-02 Roster

No.	Name	Yr.	Pos.	Ht.	Wt.	Hometown/High School (College)
4	Justin Feintuch	Jr.	G	5-11	160	Edison, NJ/J.P. Stevens
5	Ahmad Rasool	Jr.	G	5-11	175	N. Cape May, NJ/Lower Cape May (Wheeling Jesuit)
10	Ricky Urban	So.	G	6-4	185	North Arlington, NJ/North Arlington
11	Olivier Eyheramendy	Jr.	G	5-8	160	Lyon, France/Lyceee Rodin
20	Kevin Burns	Fr.	G	6-4	185	Parlin, NJ/St. Mary Diocesan
21	Matthew Martins	Jr.	G	5-11	180	South Amboy, NJ/South Amboy
23	Mars Mellish	Gr.	G	6-0	187	Brooklyn Park, MN/St. Peter's (Manhattan)
24	Randle DeFalco	Fr.	G/F	6-4	200	Ancaster, Ontario/Ancaster
32	Phil Renaud	So.	F	6-4	230	Hightstown, NJ/Hightstown
33	Demond Cowins	So.	F	6-6	210	Newark, NJ/St. Benedict's Prep
44	Joe Accurso	Jr.	F/C	6-6	215	Middletown, NJ/Christian Brothers Academy
54	Yung-Kwang Kiely	Jr.	F/C	6-6	240	Spring Valley, NY/Spring Valley (New York Tech)

Head Coach: Jim Casciano (Drexel '74), 1st year

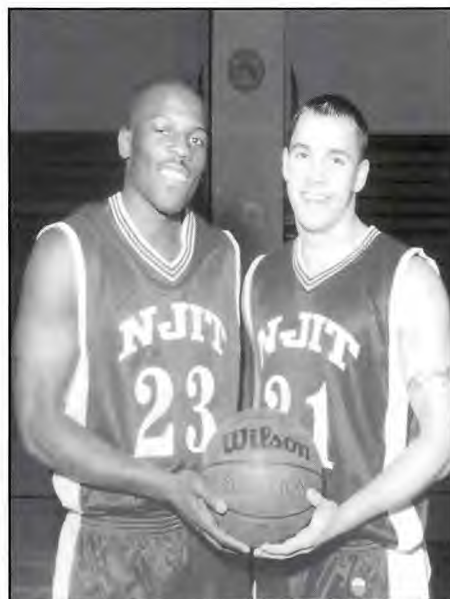
Assistant Coaches: Anthony Walker, Jeff Sonnema, Rich Spottswood

Captains: Mars Mellish, Matthew Martins

Manager: William Abanyie



The 2001-02 NJIT Men's Basketball Coaching Staff: (L-R) Rich Spottswood, Jeff Sonnema, Jim Casciano, and Anthony Walker.



2001-02 Captains Mars Mellish (l.) and Matt Martins.

BILL BEHRLE ASSOCIATES
271 GROVE • VERONA, NEW JERSEY 07044
(973) 239-4900

KING CONCRETE CUTTING & DRILLING, INC.

151 Randolph Street, Building 2A • Passaic, NJ 07055
(800) 960-5464

GFM INCORPORATED



CONSULTANTS, INC.
25 Progress Street
Edison, NJ 08820

Atul Shah, PE
President

Tel. (800) 545 - ATUL • (908) 754 - 8383 • Fax (908) 754 - 8633

Richard Yeats
Chairman



*Fine Lithography
Digital Pre-Press*

Quality Graphics Center, Inc.
262 West First Avenue
Roselle, NJ 07203
908 245 7300
908 245 2868 fax
ryeats@qgcnet.com



Walden Printing Company

If you rely on printed materials in your business or profession, you can rely on us.
Good Luck
NJIT Hoop Team!
63 Orange Avenue • Walden, NY 12586 • (845) 778-3575 • www.waldenprinting.com

MAINTTECH

System Support End to End
1 800 426-TECH

www.maintech.com



**ANDREW MARSHALL, JR.,
AND ASSOCIATES, LLC**

215 UNION STREET
HACKENSACK, NEW JERSEY 07601
PROFESSIONAL ENGINEERS
& LAND SURVEYORS

ANDREW MARSHALL, JR. P.E. & L.S.
CEO

(201) 457-1580
FAX (201) 457-1946



**NETWORK
INSTALLATIONS
CORPORATION**

LOCAL AREA NETWORKS - FIBER OPTICS

654 Springfield Avenue
Berkeley Heights, NJ 07922

(908) 464-7160
FAX: (908) 464-5752

PLEASANT HILL CONSULTANTS

34 PLEASANT HILL RD. • SUCCASUNNA, NJ 07876
(973) 927-0346



George C. Cavallo
Senior Vice President

Dennis M. Cornick
Vice President

"Proud To Serve As Construction Manager"

BEGIN WITH GILBANE
END WITH QUALITY

3150 Brunswick Pike
Lawrenceville, New Jersey 08648

Phone: (609) 671-4200

Fax: (609) 671-4255

www.gilbaneco.com

EDWARD M. SULLIVAN



ARCHITECTURAL & CORPORATE SIGNAGE

• 515 VICTORIA ST., SADDLE BROOK, NJ 07663-6118 •
(201) 845-7555 • FAX (201) 845-3336
MAIERSIGN@AOL.COM

Robin Dorsey
Sales & Purchasing

COMPAQ

NOVELL



**EBONICS COMPUTER
SYSTEMS**



A Div. of Ebonics Point of Sales, Inc.
Consulting, Computer Integration, Networking

122 Green Street, Newark, NJ 07105
Tel. 973-578-8740 Fax 973-578-8409
Email: Robinmd@ebonicstech.com

SEBICON

Microsoft
SOLUTION PROVIDER

THP, Inc.

Housing and Land Use Planners
Traffic and Transportation Engineers

NICHOLAS BELLIZZI, P.E., P.P.
Principal

40 Brunswick Woods Drive, East Brunswick, New Jersey 08816
(732) 257-4040 FAX (732) 257-7953

**Gauging our success by how much we have
assisted our clients in attaining theirs...**

Offices throughout the region
(856) 797-9302
(856) 797-9303 fax
www.oakgroup.net

*Consultations. Remediation.
Demolition. Construction.*

oak
environmental
consultants, inc.



Dan Raviv Associates, Inc.

57 East Willow Street • Millburn, New Jersey 07041
(973) 564-6006 / FAX (973) 564-6442 / DDRAI@ix.netcom.com

**Consultants in hydrogeology and soils, site investigations,
remedial engineering and ISRA compliance.**

ALAN MORTON
President

Mountain Spring
Steamed Distilled
Water Purification System
Complete Coffee Service

10 JOYCE STREET
WEST ORANGE, NJ 07052



PH 1-800-996-3338
Fax 973-243-6797

Player Profiles

4

JUSTIN FEINTUCH

Junior Guard 5-11 160
Edison, N.J./J.P. Stevens HS

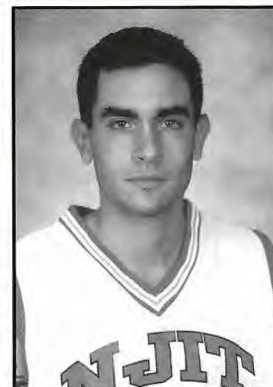
Justin Mitchell Feintuch... pushing for increased playing time in crowded Highlander backcourt.

2000-01: Averaged 1.3 points and 4.9 minutes in 13 games.

1999-2000: Appeared in 12 games... totaled four points, three rebounds and six assists.

Prior to NJIT: Mr. Basketball, honorable-mention all-area and Captain's Award winner for coach Randy Westrol at J.P. Stevens... scored 11 points in 1999 Middlesex County all-star game... also lettered in track and was a member of the National Honor Society and Spanish Honor Society.

Personal: Son of Richard and Nancy Feintuch... father Richard played collegiately at Upsala... management major with GPA of 3.5... member of NJIT's Albert Dorman Honors College... member of Phi Eta Sigma honor society... NJIT scholar-athlete award winner... born 6/5/81 in Edison, N.J.



Year	GP	FG-FGA	%	3FG-A	%	FT-FTA	%	Reb-Avg	Pts-Avg	A-Blk-Stl
1999-2000	12	1-7	.143	1-4	.250	1-4	.250	3-0.3	4-0.3	6-0-0
2000-01	13	6-15	.400	5-14	.357	0-3	.000	3-0.2	17-1.3	5-0-2
Total	25	7-22	.318	6-18	.333	1-7	.143	6-0.2	21-0.8	11-0-2

5

AHMAD RASOOL

Junior Guard 5-11 175
North Cape May, N.J./Lower Cape May RHS

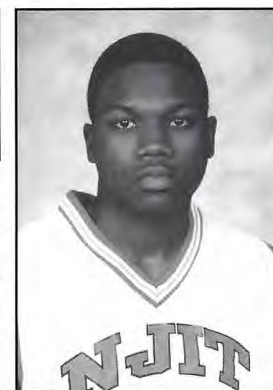
Ahmad W. Rasool... incumbent at point guard is a threat with the shot or the pass.

2000-01: First-team all-Central Atlantic Collegiate Conference... started all 28 games... averaged 13.9 points, 4.1 rebounds... led the Highlanders in assists (4.8 pg) and steals (2.6)... had a near triple-double at Wilmington 1/25 (19 points, nine rebounds, 10 assists).

1999-2000: Played at Wheeling Jesuit University... posted 10.4 points, 3.0 rebounds and 2.4 assists per game.

Prior to NJIT: Played for coach Pat Holden at Lower Cape May Regional.

Personal: Son of Arlene Rasool... management major... born 8/19/81



Year	GP	FG-FGA	%	3FG-A	%	FT-FTA	%	Reb-Avg	Pts-Avg	A-Blk-Stl
1999-2000*	27	88-225	.391	20-64	.313	46-67	.687	80-3.0	282-10.4	64-5-53
2000-01	28	139-325	.428	26-81	.321	84-114	.737	114-4.1	388-13.9	133-1-73
Total	55	227-550	.412	46-145	.317	130-181	.718	204-3.7	670-12.1	197-6-126

* at Wheeling Jesuit University

Player Profiles

10

RICKY URBAN

Sophomore Forward 6-4 185
North Arlington, N.J./North Arlington HS

Richard Anthony Urban... moves from shooting guard to small forward... potential long-range shooting threat.

2000-01: Played in 20 games... totaled six points and 19 rebounds.

Prior to NJIT: All-conference and leading scorer in conference for coach Nick Mazzolla at North Arlington High... honorable-mention all-county... also ran for the cross-country team... honor-roll student all four years of high school.

Personal: Son of Richard and Barbara Urban... majoring in computer science with a GPA of 3.2... born 8/4/82.



Year	GP	FG-FGA	%	3FG-A	%	FT-FTA	%	Reb-Avg	Pts-Avg	A-Blk-Stl
2000-01	20	3-25	.120	0-10	.000	0-4	.000	19-0.9	6-0.3	0-1-2

11

OLIVIER EYHERAMENDY

Junior Guard 5-8 160
Lyon, France/Lyce Rodin

Olivier Iker Eyheramendy... provides Casciano an experienced point guard off the bench.

2000-01: Played in 24 games... averaged 1.5 points and 0.3 assists in 6.3 minutes.

1999-2000: Registered 2.0 points and 0.6 assists per game in 18 appearances.

Prior to NJIT: Played for coach Babacar Sy at Lycee Rodin.

Personal: History major with 3.85 GPA... played on NJIT's men's soccer team as a sophomore... born 1/30/80 in Lyon, France.



Year	GP	FG-FGA	%	3FG-A	%	FT-FTA	%	Reb-Avg	Pts-Avg	A-Blk-Stl
1999-2000	18	15-30	.500	3-11	.273	3-6	.500	5-0.3	36-2.0	10-0-7
2000-01	24	11-36	.306	4-21	.190	10-16	.625	9-0.4	36-1.5	6-1-8
Total	42	26-66	.394	7-32	.219	13-22	.591	14-0.3	72-1.7	16-1-15

Player Profiles

20

KEVIN BURNS

*Freshman Forward 6-4 185
Parlin, N.J./St. Mary Diocesan HS*

Kevin Michael Burns... could step into starting role immediately... has been praised by the coaching staff for his shooting ability and "basketball IQ."

Prior to NJIT: All-county for coach Joe Lewis at St. Mary Diocesan... played on four consecutive division championship teams... was all-division in soccer and also lettered in golf.

Personal: Son of Michael and Cindy Burns... majoring in statistics and actuarial science... born 12/26/82 in Rahway, N.J.



21

MATT MARTINS

*Junior Guard 5-11 180
South Amboy, N.J./South Amboy HS*

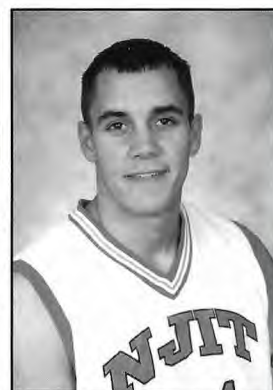
Matthew Thomas Martins... co-captain... will push for a spot in the playing rotation at both guard positions.

2000-01: Averaged 1.7 points and 0.3 rebounds in 7.6 minutes in his 24 appearances.

1999-2000: Played in 19 games... totaled 12 points, seven rebounds and six assists.

Prior to NJIT: All-division for coach George Kryzanowski at South Amboy High... earned scholar-athlete award and sportsmanship award... also played soccer.

Personal: Son of Margaret and Francisco Martins... majoring in business management... born 1/5/81 on Long Island.



Year	GP	FG-FGA	%	3FG-A	%	FT-FTA	%	Reb-Avg	Pts-Avg	A-Blk-Stl
1999-2000	19	4-15	.267	2-6	.333	2-4	.500	7-0.4	12-0.6	6-0-3
2000-01	24	12-29	.414	7-19	.368	9-12	.750	14-0.6	40-1.7	8-0-7
Total	43	16-44	.364	9-25	.360	11-16	.688	21-0.5	52-1.2	14-0-10

Player Profiles

23

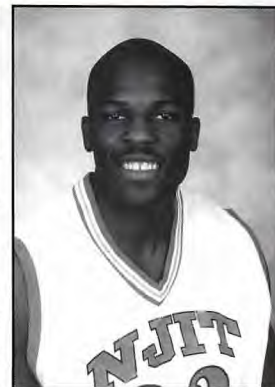
MARS MELLISH

*Graduate Student Guard 6-0 187
Brooklyn Park, Minn./St. Peter's (N.J.) HS*

Mars T. Mellish... co-captain... transfer from Division-I Manhattan College can score in many different ways and defends well.

Prior to NJIT: Played three seasons at Manhattan before graduating in 2001 with a degree in biology... member of 1998 Metro Atlantic Athletic Conference all-rookie team... all-state for coach Bob Greene at St. Peter's High... Middlesex County scholar-athlete team selection... also played for the AAU Central Jersey Jammers and coach Ed Spencer.

Personal: Son of David Simbo and Martha Sinoe... pursuing master's degree in financial management... had a 3.1 cumulative GPA at Manhattan... born 9/21/78 in Liberia.



Year	GP	FG-FGA	%	3FG-A	%	FT-FTA	%	Reb-Avg	Pts-Avg	A-Blk-Stl
1997-98*	29	65-197	.330	23-86	.267	29-46	.630	96-3.3	182-6.3	37-6-29
1998-99*	27	78-230	.339	49-138	.355	41-53	.774	73-2.7	246-9.1	33-10-30
1999-2000*	26	46-100	.460	16-49	.327	10-21	.476	36-1.4	118-4.5	23-3-19
Total	82	199-527	.378	88-273	.322	80-120	.667	205-2.5	546-6.7	93-19-78

* at Manhattan College

24

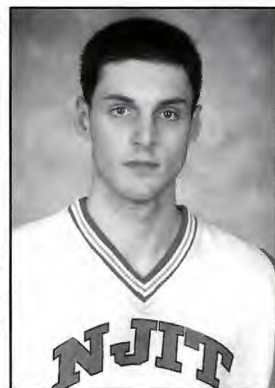
RANDLE DeFALCO

*Freshman Guard/Forward 6-4 200
Ancaster, Ont./Ancaster HS*

Randle Charles DeFalco... could step into a starting position.

Prior to NJIT: Captain and MVP for coach Robert Wynne at Ancaster High... team won provincial bronze medal in 2000... won Ontario championship with Hamilton Blessed Sacrament OBA team... played on Prep Stars Canada AAU team which won the 2000 Steel City Shootout and 2000 Silver Fox Tournament.

Personal: Son of Charles DeFalco and Diane Stevens... majoring in history... student in NJIT's Albert Dorman Honors College... possesses dual citizenship in the United States and Canada... born 4/10/82 in Hamilton, Ont.



Player Profiles

32

PHIL RENAUD

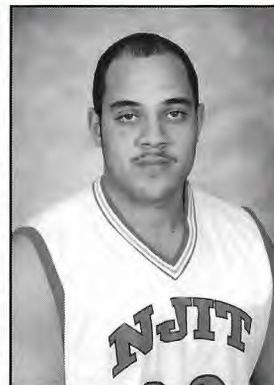
Sophomore Forward 6-4 230
Hightstown, N.J./Hightstown HS

Philippe V. Renaud... returning starter at forward... has shown a knack for scoring around the basket.

2000-01: Became a starter three games into season... averaged 13.8 points and 6.3 rebounds while shooting .535 from the field... scored 20+ points four times... recorded five double-doubles... career-high 25 points at Felician 1/13... career-high 15 rebounds at Husson 12/3.

Prior to NJIT: Three-time team MVP and three-time all-conference performer for coach Don Hess at Hightstown High... team won a conference tournament championship... scored 1,286 points in scholastic career... honor-roll student... also played on the AAU Central Jersey Knights and coach Eric Stein.

Personal: Son of Phil and Robin Renaud... maintains a 3.0 GPA in mechanical engineering... born 11/17/81 in Princeton, N.J.



Year	GP	FG-FGA	%	3FG-A	%	FT-FTA	%	Reb-Avg	Pts-Avg	A-Blk-Stl
2000-01	28	154-288	.535	0-1	.000	79-114	.693	177-6.3	387-13.8	36-16-34

33

DEMOND COWINS

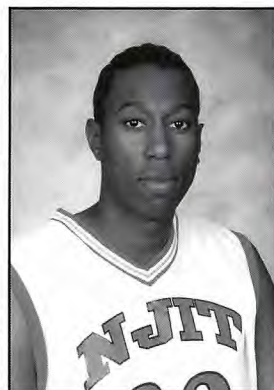
Sophomore Forward 6-6 210
Newark, N.J./St. Benedict's Prep

Demond M. Cowins... returning starter can shoot and handle ball well for his size... has gotten stronger.

2000-01: Started all 28 games... finished among national leaders with .586 shooting percentage... led Highlanders in scoring (15.1 ppg), rebounding (7.0 pg) and blocks (25)... recorded six double-doubles... scored 20 or more points on eight occasions... career-high 28 points vs. USP 1/27... career-high 13 rebounds at Holy Family 2/17... four blocks vs. Felician 2/10.

Prior to NJIT: Played for coach Hank Cordeiro at St. Benedict's Prep and coach Brian Crawford for the AAU Newark Rams... attended Long Island University in 1999-2000.

Personal: Son of Milton Battle and Gina Cowins... majoring in business management... born 3/28/81 in Newark, N.J.



Year	GP	FG-FGA	%	3FG-A	%	FT-FTA	%	Reb-Avg	Pts-Avg	A-Blk-Stl
2000-01	28	164-280	.586	5-20	.250	89-151	.589	197-7.0	422-15.1	32-25-42

Player Profiles

44

JOE ACCURSO

*Junior Center 6-6 215
Hightstown, N.J./Hightstown HS*

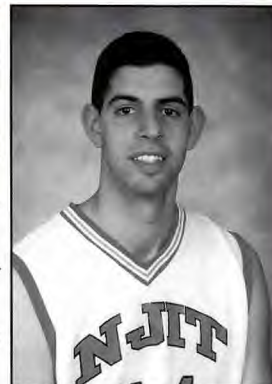
Joseph Anthony Accurso III... emerged as a starter midway through sophomore campaign.

2000-01: Averaged 1.2 points and 1.6 rebounds in 28 games, including 11 starts.

1999-2000: Played in 26 games... accumulated 1.0 points and 1.4 rebounds in 8.8 minutes per game.

Prior to NJIT: Played on county championship team for coach Ed Wicelinski at Christian Brothers Academy... also played on the AAU Central Jersey Hawks for coach John Riveria.

Personal: Son of Joe and Mabel Accurso... majoring in electrical engineering... born 7/26/81 in Spring Valley, N.Y.



Year	GP	FG-FGA	%	3FG-A	%	FT-FTA	%	Reb-Avg	Pts-Avg	A-Blk-Stl
1999-2000	26	11-34	.324	0-1	.000	4-10	.400	37-1.4	26-1.0	9-4-8
2000-01	28	10-24	.417	0-0	---	13-21	.619	46-1.6	33-1.2	20-5-5
Total	54	21-58	.362	0-1	.000	17-31	.548	83-1.5	59-1.1	29-9-13

54

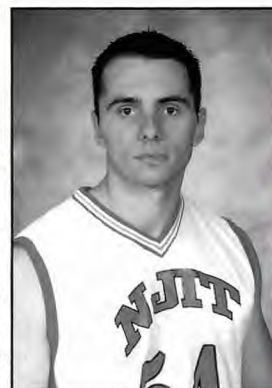
YUNG-KWANG KIELY

*Junior Forward/Center 6-6 240
Spring Valley, N.Y./Spring Valley HS*

Yung-Kwang John Kiely... transfer adds size and strength to the Highlander frontcourt... especially strong when facing basket.

Prior to NJIT: Played scholastically at Spring Valley High... also participated in volleyball, basketball, and football... played one season each at Genesee Community College and New York Institute of Technology... has also attended Rockland County College.

Personal: Son of Michael and Maria Kiely... majoring in humanities & science... born 11/4/78 in Tunisia.



2000-01 Statistics/Results

NJIT 2000-01 Men's Basketball NJIT Combined Team Statistics (Final 2000-01) All games

RECORD:	OVERALL	HOME	AWAY	NEUTRAL
ALL GAMES.....	(14-14)	(7-5)	(5-8)	(2-1)
CONFERENCE.....	(10-10)	(6-4)	(4-6)	(0-0)
NON-CONFERENCE.....	(4-4)	(1-1)	(1-2)	(2-1)

##	Player	GP-GS	Min--Avg	FG-FGA	Pct	---TOTAL---		---3-PTS---		----REBOUNDS----										Pts	Avg
						3FG-FGA	Pct	FT-FTA	Pct	Off	Def	Tot	Avg	PF	FO	A	TO	Blk	Stl		
33	COWINS, Demond.....	28-28	912 32.6	164-280	.586	5-20	.250	89-151	.589	67	130	197	7.0	93	5	32	77	25	42	422	15.1
05	RASOOL, Ahmad.....	28-28	991 35.4	139-325	.428	26-81	.321	84-114	.737	14	100	114	4.1	73	1	133	122	1	73	388	13.9
32	RENAUD, Phil.....	28-26	902 32.2	154-288	.535	0-1	.000	79-114	.693	66	111	177	6.3	105	8	36	68	16	34	387	13.8
20	STATES, Owain.....	28-27	914 32.6	109-318	.343	56-191	.293	73-95	.768	20	95	115	4.1	46	0	59	60	14	30	347	12.4
12	CASTLE, Keicy.....	13-10	329 25.3	51-108	.472	11-33	.333	18-23	.783	18	39	57	4.4	48	2	40	50	1	26	131	10.1
14	COLEY, Anthony.....	25-6	394 15.8	47-129	.364	10-41	.244	13-20	.650	16	33	49	2.0	16	0	23	27	0	11	117	4.7
03	FORST, Keith.....	12-4	231 19.2	16-49	.327	2-10	.200	24-35	.686	4	18	22	1.8	17	0	24	21	2	9	58	4.8
21	MARTINS, Matthew....	24-0	182 7.6	12-29	.414	7-19	.368	9-12	.750	4	10	14	0.6	19	0	8	13	0	7	40	1.7
11	EYHERAMENDY, Olivier	24-0	151 6.3	11-36	.306	4-21	.190	10-16	.625	4	5	9	0.4	16	0	6	10	1	8	36	1.5
44	ACCURSO, Joe.....	28-11	432 15.4	10-24	.417	0-0	.000	13-21	.619	14	32	46	1.6	30	0	20	21	5	5	33	1.2
04	FEINTUCH, Justin....	13-0	64 4.9	6-15	.400	5-14	.357	0-3	.000	1	2	3	0.2	5	0	5	4	0	2	17	1.3
10	URBAN, Ricky.....	20-0	95 4.8	3-25	.120	0-10	.000	0-4	.000	12	7	19	0.9	8	0	0	3	1	2	6	0.3
24	RANFT, Mike.....	2-0	8 4.0	1-1	1.000	0-0	.000	2-2	1.000	0	2	2	1.0	4	0	0	2	0	0	4	2.0
42	TREVINO, Pedro.....	9-0	20 2.2	1-6	.167	0-0	.000	0-2	.000	4	3	7	0.8	1	0	1	0	0	1	2	0.2
TEAM.....											61	47	108	3.9	0		16				
Total.....		28	5625	724-1633	.443	126-441	.286	414-612	.676	305	634	939	33.5	481	16	387	494	66	250	1988	71.0
Opponents.....		28	5556	754-1647	.458	184-506	.364	346-504	.687	340	709	1049	37.5	564	-	425	546	89	249	2038	72.8

TEAM STATISTICS	NJIT	OPP	DATE	OPPONENT	W/L	SCORE	ATTEND
SCORING.....	1988	2038	11/18/00	ST. ANSELM COLLEGE	L	66-86	250
Points per game.....	71.0	72.8	* 11/21/00	DOMINICAN COLLEGE	L	61-64	250
Scoring margin.....	-1.8	-	* 11/29/00	at Goldey Beacom	W	86-85	200
FIELD GOALS-ATT.....	724-1633	754-1647	12/2/00	vs Univ. of Maine Machias	W	101-87	200
Field goal pct.....	.443	.458	12/3/00	at Husson College	W	77-74	200
3 POINT FG-ATT.....	126-441	184-506	* 12/6/00	at Nyack College	W	80-69	250
3-point FG pct.....	.286	.364	12/9/00	BOWIE STATE UNIVERSITY	W	91-78	350
3-pt FG made per game..	4.5	6.6	* 12/15/00	HOLY FAMILY COLLEGE	W	90-69	200
FREE THROWS-ATT.....	414-612	346-504	* 12/19/00	BLOOMFIELD COLLEGE	L	78-87	175
Free throw pct.....	.676	.687	12/29/00	at Rollins College	L	58-79	300
REBOUNDS.....	939	1049	12/30/00	vs University of Montevallo	W OT	93-91	100
Rebounds per game.....	33.5	37.5	* 1/9/01	at Univ. of the Sciences in Phil.	L	78-81	200
Rebounding margin.....	-3.9	-	* 1/11/01	at Teikyo Post University	L	71-78	100
ASSISTS.....	387	425	* 1/13/01	at Felician College	W fo	55-94	75
Assists per game.....	13.8	15.2	* 1/17/01	at Dominican College	L	75-84	200
TURNOVERS.....	494	546	1/20/01	at Bowie State University	L	52-68	795
Turnovers per game.....	17.6	19.5	* 1/23/01	at Bloomfield College	L	72-80	175
Turnover margin.....	+1.9	-	* 1/25/01	at Wilmington (Del.) College	W	81-69	75
Assist/turnover ratio..	0.8	0.8	* 1/27/01	UNIV. OF THE SCIENCES IN PHIL	W	65-42	100
STEALS.....	250	249	* 1/30/01	CALDWELL COLLEGE	L	48-52	350
Steals per game.....	8.9	8.9	* 2/3/01	GOLDEY-BEACOM COLLEGE	W	75-58	100
BLOCKS.....	66	89	* 2/6/01	TEIKYO POST UNIVERSITY	L	55-79	125
Blocks per game.....	2.4	3.2	* 2/7/01	NYACK COLLEGE	W	81-65	250
WINNING STREAK.....	0	-	* 2/10/01	FELICIAN COLLEGE	W	72-62	300
Home win streak.....	3	-	* 2/12/01	at Caldwell College	L	46-63	200
ATTENDANCE.....	2750	3445	* 2/14/01	WILMINGTON (DEL.) COLLEGE	W	70-67	300
Home games-Avg/Game...	12-229	13-232	* 2/17/01	at Holy Family College	L	53-65	250
Neutral site-Avg/Game..	-	3-142	3/10/01	vs College of St. Rose	L	58-62	125

* denotes conference game

CONTRACTORS BUILDING FOR THE FUTURE OF NJIT

FREE ESTIMATES

TEL (201) 797-5440
FAX (201) 797-8965



C & S Fencing, Inc.

VINYL - GALVANIZED
PRIVACY FENCES - GUARD RAILS

CIRO SPINELLA
PRESIDENT

75-77 MIDLAND AVENUE
ELMWOOD PARK, NEW JERSEY 07407

(732) 750-3300
FAX: (732) 750-5777

SOUTH SHORE CONTRACTING INC.

3 CONVERY BOULEVARD, SUITE 100
WOODBIDGE, NEW JERSEY 07095

Glenn Del Russo

Specializing in New & Rehab: Parking Garages • Building Restorations
• Caulking • Waterproofing Systems • Penetrating Sealers

Peter Thorne
President

THORNE'S INDEPENDENT ROOFING

11 Catherine Street
Red Bank, New Jersey 07701
Telephone 908/842-6919
Fax No. 908/219-0516



**ALLIED
FIRE &**

SAFETY EQUIPMENT COMPANY, INC.

517 GREEN GROVE ROAD - PO BOX 607 - NEPTUNE, NJ 07754-0607

JAMES T. NEWELL
VICE PRESIDENT

EMAIL: JAMESN@ALLIEDFIRESAFETY.COM
WWW.ALLIEDFIRESAFETY.COM

TEL 732-922-3399
FAX 732-918-8668



NORDIC CONTRACTING CO., INC.

950 State Highway 10
Randolph, New Jersey 07869

John D. Jacobsen
President

P.O. Box 547
Succasunna, New Jersey 07876

Tel. (973) 584-5213
Fax (973) 584-0806



ROBERT GAGLIANO

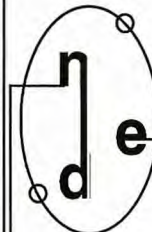
TEL (973) 412-1710
FAX (973) 412-1711
CAR (908) 400-1224
BEEPER (908) 653-3471
E-Mail: coatingtec@aol.com

COATING TECHNOLOGIES
120 Ridge Street • Newark, NJ 07104



1148 ROUTE 22
MOUNTAINSIDE, NJ 07092
(908) 789-6849
FAX: (908) 232-1485

G.F. (JERRY) MURPHY P.E.
PRESIDENT



Lic. #6807

NORDLING, DEAN ELECTRIC CO., INC.

293 PASSAIC AVE., P.O. BOX 923
CHATHAM, NJ 07928-0923

(973) 635-0300
FAX (973) 635-2882

SIEMENS Cerberus Division

Siemens Building Technologies, Inc.

16 Chapin Road, Suite 912
P.O. Box 2034
Pine Brook, NJ 07058

Betty Eichlin
Senior Branch Manager

Tel: (973) 227-6220 Ext. 170
Fax: (973) 227-1220

ABLE ROLLING
STEEL
DOOR INC.

Commercial / Industrial
Rolling Steel Doors
Sectional Overhead Doors
Loading Dock Equipment

atlas door

MASTER DISTRIBUTOR
201-487-2253

FAX 201-487-1566

About NJIT

NJIT's history spans from the Industrial Revolution to the Information Age. Newark was a factory town when the tuition-free evening school was founded in 1881 to support local industries. From the early days, science and technology have been the engines fueling the university's development.

Over time, the university both anticipated and responded to change by expanding its curriculum and mission. Most notably, in 1919, the university established baccalaureate programs in three engineering fields. By 1975, NJIT offered a broad range of undergraduate and graduate degrees. All programs included significant research and public service components with the goal of providing an academic environment that fostered intellectual depth and breadth, as well as social responsibility.

Today, continuing a fourfold mission of instruction, research, economic development and public service, NJIT is among the leading comprehensive technological universities in the nation. The university has state-of-the-art facilities with more than

2,000,000 square feet of space located on a 45-acre campus in Newark, a Technology and Engineering Center at our campus in Mount Laurel shared with Burlington County College, and a solar observatory in Big Bear, California.

NJIT's Six Colleges

While there has been tremendous growth and diversification at NJIT, its roots are in engineering education. For more than eight decades, **Newark College of Engineering (NCE)** has been preparing engineering students to use science, mathematics, technology and problem-solving skills to design, construct, test and maintain products, services, and information systems.

The **New Jersey School of Architecture**, established in 1974, is one of the largest architecture

schools in the nation and is nationally recognized for the innovative integration of computer technology into the design curriculum.

The **College of Science and Liberal Arts (CSLA)**, established in 1982, is moving into the forefront of many national research activities from solar physics to computational and mathematical modeling. CSLA provides students with the skill sets for the professional marketplace including literacy in the computer, mathematical, physical and biological sciences, as well as the traditional liberal arts disciplines.

The **School of Management**, established in 1988, combines the best of the traditional business disciplines (e.g., finance, marketing, accounting, e-commerce) with

the power of information and technology management to develop professionals who can manage and communicate effectively.

The **Albert Dorman Honors College**, established in 1993, offers one of the nation's leading technologically oriented honors programs for students who are

prepared to undertake a rigorous and individualized course of study.

The **College of Computing Sciences**, established in 2001, encompasses a department of computer science focused on both the theoretical areas of computing and the development of new computer technology, as well as a department of information systems, concentrated on applications involving people and organizations.

NJIT Mission Statement

NJIT is a **public, urban, research university**, committed to the **pursuit of excellence** in

- undergraduate, graduate, and continuing professional **education**, preparing students for productive



About NJIT

careers and amplifying their potential for lifelong personal and professional growth;

- the conduct of **research** in such multi-disciplinary areas as environmental engineering, materials science, manufacturing, productivity enhancement, infrastructure systems, communications, technologies, and an array of bio-related sciences and technologies;
- contributing to the state's **economic development** through partnerships and joint ventures with the business community and through the development of intellectual property;

- **service** to both its local communities and the broader society of the state and nation by conducting public policy studies, making educational opportunities widely available, and initiating community-building projects.

NJIT **prepares its graduates** for positions of leadership as professionals and as citizens, **provides educational opportunities** for a broadly diverse student body, **responds to needs** of large and small businesses, state and local governmental agencies, and civic organizations, and **advances the uses of technology** as a means of improving the quality of life.

NJIT – A “MOST-WIRED” UNIVERSITY

Yahoo! Internet Life magazine has perennially ranked NJIT as a “most-wired” university. As such, the university is nationally recognized as a pioneer in the use of computing and information technologies.

As a public research university, NJIT is educating leaders for a technology-driven economy. The university is rethinking educational programs to emphasize marketplace skills, and redesigning its methods of delivering education. Indeed, computing and information technology underpin every facet of the NJIT mission.



NJIT received Carnegie Foundation designation as a Doctoral II university in 1994 and has ranked among the top universities by U.S. News and World Report every year since. NJIT expends more than \$50 million in a panoply of research and development partnerships with industry, government, and other universities. NJIT researchers are making important advances in a wide range of areas, including the biosciences, manufacturing, microelectronics, multimedia, transportation, computer science,

solar physics, environmental engineering and science, and architecture and building science.

NJIT plays an essential role in the economic and social life of the state and nation. At NJIT, the objective is to provide graduates with the requisite analytic skills as well as an ability to integrate the work of multiple disciplines to manage and lead knowledge-based and technology-dependent businesses.

The mission of a technological university requires that NJIT continue to recognize emerging trends in the economy, the sciences, and technology, and to anticipate their impact on society by developing appropriate educational and research programs.

Newark: The Renaissance City

NJIT is located in the heart of New Jersey's largest city. A major urban center, Newark is a city on the move. Some 30,000 undergraduate, graduate and professional students attend classes in University Heights at the city's four public institutions of higher learning: NJIT, Rutgers-Newark, the University of Medicine and Dentistry of New Jersey, and Essex County College.

Attractions in Newark's revitalized downtown include:

- The Newark Museum
- New Jersey Performing Arts Center
- The Newark Public Library
- Symphony Hall
- Branch Brook Park
- Art galleries, restaurants, and shopping
- An urban architectural laboratory
- Professional minor league baseball (Newark Bears)

Newark: New Jersey's College Town

Adjacent to NJIT is the Newark campus of Rutgers University.

NJIT and Rutgers enjoy an exceptionally close

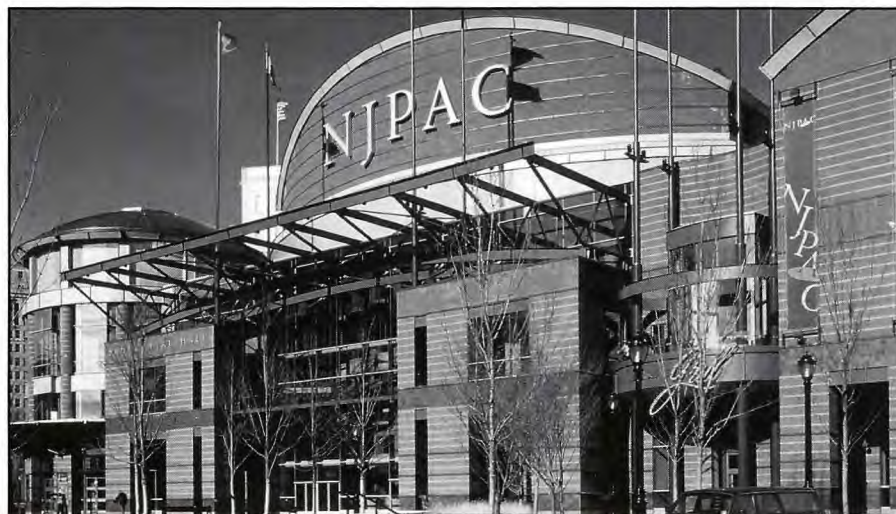
and productive consortial relationship within the thriving University Heights section of Newark. NJIT and Rutgers students have library privileges at both campuses. NJIT students may also enrich their educational experience by enrolling in Rutgers-Newark courses and in full degree programs in disciplines not offered at NJIT, such as art, music, geology and psychology.

Each year the two universities co-sponsor a common season of theatrical productions, as well as "World Week," a joint program of honors colloquia, and a variety of other cultural and social activities.

New Jersey/New York Metropolitan Region

The NJIT campus is in one of the nation's most exciting cultural and business regions. Advantages include:

- Minutes from New Jersey Performing Arts Center, Liberty Science Center, Meadowlands Sports Complex, Manhattan and all of its attractions, Newport Center Mall, and Secaucus Outlet Center.
- Discount tickets for Broadway shows, museums, concerts, and sporting events.
- Weekend trips throughout the Northeastern United States: skiing, boating, swimming, hiking, and much more.
- The spectacular Jersey shore is less than one hour away.



*The New Jersey
Performing Arts
Center in downtown
Newark.
(Photo by Jeff Goldberg,
Esto Photographics, Inc.)*

Athletics Facilities

The NJIT men's and women's basketball teams play their home games at **Entwisle Gymnasium**, the main facility in the **Estelle and "Zoom" Fleisher Athletic Center**.

Entwisle, with seating for approximately 1,500 spectators, is also home to the Highlanders' men's and women's volleyball teams. The back bay, "C gym," area can be sectioned off from the main floor, making the entire gymnasium area useful for intramural events, physical education classes, and campus recreation time, and able to host multiple events simultaneously.



The basketball teams also have access to all of the other facilities in the athletic center. These include the fitness area (containing computer controlled biking equipment, Cybex resistance units, and an indoor track), weight room, four racquetball courts (which can be converted for squash), a martial arts center, and an aerobics/dance studio. A six-lane swimming pool is home to NJIT's men's and women's swimming teams, while the two varsity tennis squads host meets and practices at four lighted outdoor hardcourt tennis courts behind the building.



The NJIT baseball and men's and women's soccer teams play and practice at **Lubetkin Field**, a lighted, natural-grass campus facility immediately adjacent to the Fleisher Center. Lubetkin, which is also used for physical education and intramurals, contains a midfield scoreboard and pressbox facilities, with seating to hold approximately 1,000 spectators.

NJIT also offers several club sports, including bowling, cricket, golf, judo, men's lacrosse and wrestling. The Hazell Student Center houses six regulation bowling lanes.

Physical education offerings include aerobics, archery, bowling, dance, fencing, golf, karate, learn to swim, skiing, strength training and conditioning, volleyball and water safety.

Top: Fleisher fitness center; center: Entwisle Gymnasium; Right: NJIT weight room.



Athletics Communications

The NJIT athletics department now offers several ways for media and fans to keep up with the Highlanders:

www.njit.edu/athletics



NJIT sports news, results, and schedules are available by logging onto <http://www.njit.edu/athletics>. The Highlanders' athletic web page is coordinated by NJIT graduate students **Ashish Bhardwaj** and **Pramendra Jain**.

The page was redesigned and relaunched in the fall of 2000 by then-graduate student **Amit Desai**. Bhardwaj and Jain now maintain the site under the supervision of **Ray Hayling**, manager of internet services, and **Mark Mentone**, coordinator of sports information services.

Currently available are rosters and schedules of all 13 NJIT varsity intercollegiate sports, the latest department press releases and weekly notebooks, biographies of coaches, and the NJIT Alumni Athletic Hall of Fame. Future plans include biographies of selected athletes, record books, and photo albums.



(973) 596-5555

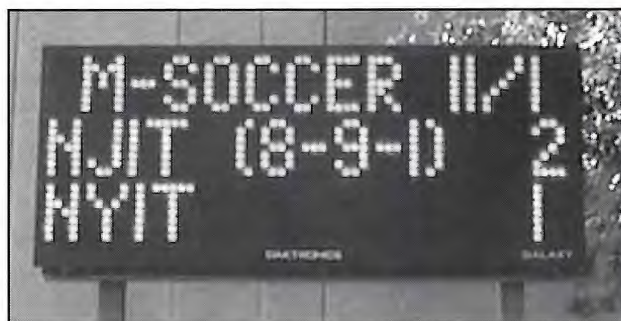
New for 2001-02 is the NJIT Sports Hotline, (973) 596-5555. Option 1 will give the user the most recent varsity results. Option 2 provides upcoming events and special announcements. Users will also be able to leave a message for the sports information office.

E-Mail Distribution List

Anyone can receive the most recent NJIT athletics press releases electronically by joining the department's e-mail distribution list. Membership is free. Created in the winter of 2000-01, the list has been refined so that users can receive all releases or just the ones in which they are most interested.

To begin receiving Highlander news in your inbox, fill out the form on the athletics website or send a message to Mark Mentone at mentone@adm.njit.edu.

Campus Message Board



Mark Mentone

Visitors or members of the campus community are encouraged to regularly check the new electronic message board to the right of the gym entrances to the Fleisher Athletic Center.

The board, installed in January 2001, provides department and campus news 24 hours a day on a flashy amber-colored LED display. Those approaching from the campus green area can learn such tidbits as upcoming events, recreational classes, new staff members, and intramural champions, as well as the latest varsity scores and highlights.

Modern School Records

INDIVIDUAL

Most Points, Career: 2,028, Clarence Pierce, 1992-96
Most Points, Season: 624, Clarence Pierce, 1994-95
Most Points, Game: 44, Mike Grubbs, 1994-95 and Clarence Pierce vs. Stevens Tech, 1/15/94
Most Rebounds, Career: 1,191, Rich Olsen, 1964-68
Most Rebounds, Season: 402, Joe Gavao, 1968-69
Most Rebounds, Game: 23, Andrew South vs. New York Maritime, 3/7/94.
Most Assists, Career: 611, Lance Andrews, 1989-93
Most Assists, Season: 292, Joe Marcotte, 1994-95
Most Assists, Game: 17, Joe Marcotte vs. Yeshiva, 1/25/94; Joe Marcotte vs. Southern Vermont, 2/26/95; and Clarence Pierce vs. Centenary, 1/18/95.
Most Blocked Shots, Season: 198, Tory Black, 1996-97
Most Blocked Shots, Game: 16, Tory Black vs. New York Tech, 2/5/97.

TEAM

Most Points, Season: 2,761, 1994-95
Most Points, Game: 139 vs. SUNY-Purchase (30), 1/26/87.
Most Points Allowed, Game: 129 by Mercy (79), 2/23/77
Least Points Allowed Per Game: 52.3, 1964-65
Most Points Per Game: 96.4, 1986-87
Highest Scoring Margin, Season: 26.1, 1988-89 (90.8-63.9)
Most Field Goals, Season: 1,047, 1988-89
Most Field Goal Attempts, Season: 2,236, 1991-92
Highest Field-Goal Percentage, Season: .553 (996-1,809), 1988-89
Most Field Goals, Game: 60 vs. SUNY-Purchase, 1/26/87.
Most Field Goals Attempted, Game: 106 vs. SUNY-Purchase, 1/26/87
Most Three-Point Field Goals, Season: 281, 1991-92
Most Three-Point Field Goal Attempts, Season: 772, 1991-92
Highest Three-Point Field Goal Percentage, Season: .659, 1986-87
Most Three-Point Field Goals, Game: 22 vs. Stevens Tech, 1/17/90
Most Three-Point Field Goal Attempts, Game: 44 vs. Pratt, 11/26/91
Most Rebounds, Season: 1,363, 1994-95
Most Rebounds, Game: 71 vs. Bard, 2/19/94
Most Victories, Season: 28, 1994-95
Highest Winning Percentage, Season: .933 (28-2), 1994-95

1,000-POINT CLUB

1.	Clarence Pierce (92-96)	2,028
2.	Chris Miles (85-89)	1,875
3.	Lance Andrews (89-93)	1,755
4.	Tom Gallagher (81-85)	1,638
5.	Warren Rogers (83-87)	1,390
6.	Andrew South (92-95)	1,345
7.	Reggie James (85-89)	1,250
8.	Ken Chance (82-86)	1,231
9.	Bob Zanzalari (79-83)	1,224
10.	Sal Gagliardo (81-85)	1,192
11.	Larry Tosato (52-56)	1,143
12.	Kevin Jackson (88-92)	1,139
13.	Rich Olsen (64-68)	1,118
14.	Lou Mezzina (88-92)	1,104
15.	Charles Brown, Jr. (85-88)	1,004



Lance Andrews '93 is NJIT's all-time leader in assists and third on the career scoring list.

Records only available since 1953.

All-Time Results

1922-23 ()

Coach: Entwisle

1923-24 (2-1)

YMCA	W	36-32
Stevens Tech JV	L	28-33
YMCA	W	58-15

Coach:

1924-25 (2-3)

Upsala	W	36-31
Stevens Tech JV	L	21-24
Bloomfield Seminary	L	30-32
Webb Naval	W	34-26
Upsala	L	20-26

Coach:

1925-26 (2-4)

Upsala	L	
Stevens Tech	L	
Wagner	L	
Webb Naval	L	
Webb Naval	W	
Wagner	W	

Coach:

1926-27 (7-5)

St. Francis	W	24-14
Webb Naval	W	28-24
Pratt	L	23-29
Columbia Pharmacy	W	29-28
Washington Square	L	14-21
Upsala	L	29-31
Wagner	W	27-21
Cooper Union	W	23-20
Stevens Tech JV	W	25-21
Wagner	W	36-27
Webb Naval	L	18-32
St. Francis	L	23-27

Coach:

1927-28 (3-8)

St. Francis	L	13-43
Columbia Pharmacy	W	51-35
Princeton JV	L	19-32
Newark Arts & Sci.	W	71-16
Stevens Tech	L	26-42
Washington Square	L	28-43
Newark Normal	L	19-29
Webb Naval	W	20-19
Savage	L	27-48
Upsala	L	33-29
Rider	L	28-40

Coach:

1928-29 (1-7)

Long Island		
Columbia Pharmacy		
Stevens Tech		
Brooklyn Tech		
Mercer Beasley		
Rider		
Long Island		
Upsala		

Coach:

1929-30 (4-6)

Webb Naval	W	27-21
Drew	W	20-16
Cooper Union	L	12-28
John Marshall	L	21-55
Brooklyn Poly.	W	43-17
Webb Naval	L	12-13
Stevens Tech	L	21-43
Drew	W	24-18
Upsala	L	23-39
Princeton JV	L	3-19

Coach:

1930-31 (8-1)

Newark Normal	W	47-18
Stevens Tech	L	25-47
Drew	W	33-18
Webb Naval	W	49-26
Brooklyn Poly. (3ot)	W	39-37
NYU	W	39-22

Webb Naval	W	38-17
Drew	W	38-33
Upsala	W	32-31

Coach: Otto Faib

1931-32 (3-6)

Brooklyn Polytechnic	L	15-31
Webb Naval	W	26-19
Drew	W	41-30
LIU	L	27-43
Dana	L	20-31
Upsala	L	28-40
Cooper Union	L	36-50
Drew	W	36-30
Brooklyn	L	14-48

Coach:

1932-33 (5-4)

at Newark Normal	L	32-36
at Bloomfield Sem.	L	30-35
at Drew	W	43-25
at Brooklyn Poly.	W	41-29
JERSEY CITY STATE	W	30-25
DREW	W	44-29
WEBB NAVAL	W	41-26
UPSALA	L	
DANA	L	

Coach: Fred Bauder

1933-34 (3-6)

Newark Teachers	W	29-26
Newark Teachers	L	17-25
Drew	W	41-25
Drew	W	32-28
Upsala	L	28-72
Rutgers Pharmacy	L	24-38
Brooklyn Polytechnic	L	25-35
Webb Naval	L	22-25
Wagner	L	22-32

Coach: Fred Bauder

1934-35 (5-4)

at Princeton JV	L	24-63
at Drew	W	29-27
DREW	W	28-18
NEWARK NORMAL	W	31-29
At Rutgers Pharmacy	L	26-42
WEBB NAVAL	W	27-21
At Newark Normal	W	27-19
At Wagner	L	22-32
COOPER UNION	L	15-32

Coach: Fred Bauder

1935-36 (8-3)

at Drew	W	30-29
BLOOMFIELD SEM.	L	34-36
BROOKLYN POLY	L	25-28
At Pratt	L	20-43
DREW	W	31-28
NEWARK NORMAL	W	33-24
RUTGERS PHARM.	W	42-34
COOPER UNION	W	27-25
WAGNER	W	36-34
At Upsala	W	34-25
At Newark Normal	W	41-39

Coach: Fred Bauder

1936-37 (5-4)

at Wagner	W	34-27
at Rutgers Pharmacy	L	26-28
DREW	L	21-25
At Newark Normal	W	34-17
At Brooklyn Poly.	L	34-40
At Newark	L	22-47
NEWARK NORMAL	W	36-31
UPSALA	W	37-22
DREW	W	31-18

Coach: Fred Bauder

1937-38 (8-2)

BROOKLYN POLY.	W	42-24
RUTGERS PHARM.	W	43-33
DREW (ot)	W	40-36
NEWARK TEACHERS	W	70-28
At Pratt	L	40-45
At Newark Teachers	W	48-17
At Wagner	W	34-33

At Drew	W	30-28
At Newark	L	32-36
NEWARK	W	43-38

Coach: Fred Bauder

1938-39 (6-5)

CATHEDRAL	W	55-24
At Brooklyn Poly.	L	33-38
MONTCLAIR TEACH.	L	35-46
At Rutgers Pharmacy	W	61-28
NEWARK TEACHERS	W	56-22
BLOOMFIELD	W	36-29
WAGNER	W	50-28
At Drew	W	47-34
At Newark	L	33-38
DREW	L	24-36
MANHATTAN (SI)	L	39-41

Coach: Fred Bauder

1939-40 (9-4)

at Panzer	L	27-34
RUTGERS PHARM.	W	49-30
At Newark Teachers	W	50-19
BROOKLYN POLY.	W	47-34
JOHN MARSHALL	L	28-32
DREW	W	38-27
At Upsala	W	55-51
At Drew	W	51-38
At Montclair Teachers	L	28-37
PRATT	W	57-45
At Wagner	W	36-30
NEWARK	L	42-43
UPSALA	W	49-33

Coach: Fred Bauder

1940-41 (2-8)

Drew	L	29-45
Panzer	L	29-53
Brooklyn Polytechnic	L	38-46
Rutgers Pharmacy	L	40-44
Pratt	L	37-55
Newark	L	35-39
Newark Teachers	W	36-25
Drew	L	35-46
Montclair Teachers	L	47-74
Upsala	W	72-53

Coach: Fred Bauder

1941-42 ()

Coach: Fred Bauder

1942-43 (2-6)

Coach: Fred Bauder

1943-44 ()

Coach: Fred Bauder

1944-45 ()

Coach: Fred Bauder

1945-46 ()

Coach: Fred Bauder

1946-47 ()

Coach: Fred Bauder

1947-48 ()

Coach: Fred Bauder

1948-49 ()

Coach: Fred Bauder

1949-50 (5-5)

Drew	W	57-55
Rutgers-Newark	L	44-66
Jersey City Teachers	W	76-62
Stevens Tech	W	50-48
Newark Teachers	W	69-52
St. Peter's	L	60-65
Rutgers Pharmacy	L	43-69
Paterson Teachers	L	59-66
Drew	W	68-64
Rutgers-Newark	L	70-78

Coach: Fred Bauder

1950-51 (10-3)

12/2	at Panzer	L	64-69
12/5	at Newark Teachers	W	65-56
12/9	DREW	W	57-54
12/16	NEWARK TEACH.	W	73-57
1/6	at Rutgers Pharm.	W	83-67
1/13	STEVENS TECH	L	49-57
1/27	PATERSON TEACH.	L	63-64
	Jersey City Teachers	W	84-61
2/8	at Nat'l Agricultural	W	71-41
2/17	at Rutgers-Newark	W	84-75
2/22	PANZER	W	77-75
2/24	at Drew	W	
3/3	RUTGERS-NEWARK	W	

Coach: Fred Bauder

1951-52 (8-7)

12/1	Drew	L	49-67
12/8	Bloomfield	L	52-59
12/15	Stevens Tech	W	53-48
1/5	Jersey City Teachers	L	33-62
1/12	Montclair State	W	59-57
1/19	Newark State	L	54-57
1/26	Panzer	W	86-61
2/2	Montclair State	W	69-62
2/6	Rutgers Pharmacy	L	59-97
2/9	Rutgers-Newark	W	66-62
2/16	Paterson State	W	78-66
2/22	Newark State	W	65-55
2/23	Drew	L	76-86
3/1	Rutgers-Newark	W	66-62
3/8	Panzer	L	73-82

Coach: Fred Bauder

1952-53 (12-5)

Coach: Fred Bauder

1953-54 ()

Coach: Fred Bauder

1954-55 (10-7)

12/4	PATERSON TEACH.	L	89-93
12/11	at Drew	W	88-71
12/18	MONTCLAIR TEACH.	W	92-85
1/7	at Montclair Teachers	L	79-83
1/15	NEWARK TEACHERS	W	67-63
1/22	PANZER	L	62-89
1/29	BLOOMFIELD	W	120-99
2/1	at Paterson Teachers	W	94-91
2/4	at Jersey City Teach.	W	86-71
2/5	at Panzer	L	78-91
2/7	at Rutgers-Newark	W	80-63
2/8	at Rider	W	70-66
2/12	at Bloomfield	L	72-84
2/19	RUTGERS-NEWARK	L	65-69
2/22	DREW	W	59-56
2/26	RIDER	L	64-71
3/5	STEVENS TECH	W	77-71

Coach: Fred Bauder

1955-56 (8-6)

12/3	PATERSON TEACH.	W	103-59
12/10	at Stevens Tech	L	57-64
12/17	RUTGERS-NEWARK	W	86-66
1/7	DREW	W	83-64
1/14	PACE	W	111-73
1/21	BLOOMFIELD	L	87-91
1/31	at Paterson Teachers	W	92-85
2/3	at Panzer	L	94-105
2/7	at Rutgers-Newark	L	69-87
2/9	YESHIVA	L	61-73
2/18	at Drew	W	96-75
2/21	at Jersey City Teach.	W	85-80
2/25	PANZER	L	90-107
3/3	MONTCLAIR TEACH.	W	90-77

Coach: Fred Bauder

1956-57 (9-6)

12/8	S. HALL-PATERSON	W	84-79
12/15	vs. Rutgers-Newark	W	66-54
1/5	vs. Newark Teachers	W	64-49
1/12	DREW	W	73-71
1/19	COOPER UNION	W	78-60
1/26	JERSEY CITY TEAC.	W	72-56
1/29	at Paterson Teachers	L	61-62
2/2	at Montclair Teachers	L	64-67
2/5	at Pace	W	83-64

All-Time Results

2/9	at Bloomfield	L	71-79
2/16	at Yeshiva	L	74-99
2/21	at Panzer	L	79-98
2/23	at Drew	W	70-59
3/2	RUTGERS-NEWARK	W	66-50
39	STEVENS TECH (ot)	L	70-78
Coach: Fred Bauder			

1957-58 (10-6)

12/7	at Rutgers-Newark	W	67-58
12/14	at Stevens Tech	L	64-81
1/11	DREW	W	75-66
1/18	at Monmouth	L	58-75
1/25	NEWARK TEACH.	L	74-82
1/28	PATERSON TEACH.	W	66-64
1/30	PACE	W	73-59
2/1	at Brooklyn Polytech.	W	86-70
2/4	MONTCLAIR TEACH.	W	77-75
2/6	PANZER	W	74-66
2/8	at Cooper Union	L	66-80
2/15	at Drew	W	72-61
2/21	at Newark Teach. (ot)	L	92-102
2/28	LOWELL TECH	L	69-75
3/1	RUTGERS-NEWARK	W	66-55
3/8	BLOOMFIELD	W	91-75
Coach: Fred Bauder			

1958-59 (7-8)

12/6	at Bloomfield	L	57-74
12/13	at Rutgers-Newark	W	87-78
1/10	COOPER UNION	W	80-63
1/17	MONMOUTH	L	72-80
1/24	at Newark State	L	71-84
1/27	BROOKLYN POLY.	W	81-69
1/29	at Paterson State	L	59-73
1/31	DREW	W	77-70
2/3	at Montclair State	L	68-87
2/6	at Pace	W	97-73
2/7	NEWARK STATE	L	76-85
2/14	UPSALA	L	70-84
2/21	at Drew	W	68-62
2/28	STEVENS TECH	W	58-56
3/7	RUTGERS-NEWARK	L	77-79
Coach: Fred Bauder			

1959-60 (7-10)

12/12	at Stevens Tech	L	71-79
12/19	at Rutgers-Newark	L	81-89
1/8	at Newark State	W	68-61
1/16	MONTCLAIR STATE	L	73-83
1/23	PACE	W	84-67
1/29	PATERSON STATE	W	85-77
1/30	at Brooklyn Polytech.	L	54-60
2/4	at Monmouth	L	70-93
2/6	at Drew	W	84-75
2/9	at Jersey City State	L	61-81
2/13	at Cooper Union	W	76-71
2/20	at Upsala	L	61-115
2/27	DREW	W	92-66
3/5	RUTGERS-NEWARK	L	78-79

Coach: Fred Bauder

1960-61 (9-9)

12/3	JERSEY CITY STATE	L	54-71
12/10	RUTGERS-NEWARK	W	67-58
12/16	at Newark State	L	62-80
	at RIT	W	72-63
	vs. Illinois Tech	L	50-79
	vs. Indiana Tech	L	52-79

Fitzgerald

1/7	NEWARK STATE	L	65-69
1/14	at Montclair State	L	54-65
	at S. Hall-Paterson	L	
1/27	at Paterson State	L	62-67
1/31	at Pace	L	69-89
2/2	DREW	W	62-60
2/7	BLOOMFIELD	W	89-77
2/9	BROOKLYN POLY.	W	79-65
2/11	LONG ISLAND COLL.	W	74-57
2/18	at Drew	W	77-49
2/25	STEVENS TECH	W	82-61
3/4	at Rutgers-Newark	W	69-66
Coach: Fred Bauder/Joseph Fitzgerald			

1961-62 (11-8)

	S. HALL-PATERSON	W	73-70
	At Stevens Tech	W	65-61
	RUTGERS-NEWARK	W	86-73
	Vs. Indiana Tech	L	67-78
	Vs. Brooklyn Polytech.	W	74-58
	Vs. Pratt	L	49-51
2/1	At Newark State	L	61-62
	MONTCLAIR STATE	L	70-82
	PATERSON STATE	L	61-73
	Monmouth	L	75-100
	NEWARK STATE	L	86-87
	At Drew	W	66-62
	Trenton State	W	74-66
	Brooklyn Polytechnic	W	82-62
	Long Island College	W	100-79
	DREW	W	88-75
	At Bloomfield	L	80-94
2/24	At Jersey City State	W	67-61
3/2	at Rutgers-Newark	W	66-61
Coach: Joseph Fitzgerald			

1962-63 ()

12/1	at Seton Hall-Paterson	L	73-88
12/8	DREW		
12/15	NEWARK STATE	L	67-98
1/5	at Rutgers-Newark		
1/11	at Montclair State		
1/19	JERSEY CITY STATE		
1/26	at Brooklyn Polytech.		
1/29	at Monmouth		
2/1	at Pratt	L	
2/5	TRENTON STATE	W	
2/7	UPSALA	L	
2/9	LONG ISLAND COLL	W	
2/16	at Drew	W	
2/21	LOWELL TECH	W	
2/23	STEVENS TECH	W	74-48
3/2	Rutgers-Newark	W	
Coach: Joseph Fitzgerald			

1963-64 (8-11)

Coach: Joseph Fitzgerald

1964-65 (9-4)

Coach: Joseph Fitzgerald
Led NAIA in scoring defense (52.3 ppg)

1965-66 (11-8)

	Paterson State	W	90-69
	Hunter	W	67-53
	Delaware State	L	63-69
	Vs. Stevens Tech	W	68-44
	Vs. Fairleigh Dickinson	W	66-56
	Montclair State	W	65-55
	Jersey City State	L	50-71
	Monmouth	L	57-70
	Rutgers-Newark	L	48-59
	DC Teachers	L	93-95
	Delaware State	L	55-91
	Pratt	W	57-54
	Trenton State	L	64-96
	Drew	L	53-56
	FDU-Madison	W	74-66
	Newark State	W	69-64
	Brooklyn Polytechnic	W	71-59
	Stevens Tech	W	91-59
	Bloomfield	W	89-82
Coach: Joseph Fitzgerald			

1966-67 (11-8)

	UPSALA	L	56-64
	NEWARK STATE	W	82-62
	BROOKLYN POLY.	W	79-38
	Vs. Bloomfield	W	91-61
	At Montclair State	L	54-69
	Rutgers-Newark	W	64-62
	DC TEACHERS	L	52-58
	At Monmouth	L	46-76
	At Trenton State	L	71-94
	RIT	W	69-60
	RUTGERS-NEWARK	W	70-49
1/31	at Boston State	W	59-57
2/1	at Bentley	L	65-86
2/4	JERSEY CITY STATE	L	58-72
2/11	FDU-MADISON	W	67-60
	MONTCLAIR STATE	L	74-86

	Paterson State	W	80-58
	STEVENS TECH	W	73-42
	At Bloomfield	W	74-70
Coach: Lou Torciocollo			

1967-68 (13-7)

12/2	UPSALA	W	65-60
12/9	BENTLEY	W	79-76
12/16	MONTCLAIR STATE	L	71-81
	PRATT	W	83-74
	Vs. Monmouth	L	66-75
	vs. Upsala	L	59-60
	at Brooklyn Polytech.	W	82-55
	at Newark State	W	73-64
	TRENTON STATE	L	73-82
	At DC Teachers	W	112-85
	At Southeastern	W	64-45
	At Rutgers-Newark	W	79-62
	PATERSON STATE	W	89-66
	At Jersey City State	L	65-67
	At FDU-Madison	L	65-81
	RIT	W	109-87
	MONMOUTH	L	69-71
	At Drew	W	81-50
	At Stevens Tech	W	103-59
	At Bloomfield	W	97-78
Coach: Lou Torciocollo			

1968-69 (6-12)

11/30	at Upsala	L	49-57
12/6	LEHMAN	L	50-58
12/14	at Montclair State	L	47-77
12/20	at Hunter	W	69-59
12/27	at Montclair State	L	53-77
1/3	Pratt	W	75-59
1/10	BROOKLYN POLY.	W	75-33
	NEWARK STATE	L	66-70
	At Trenton State	L	46-64
	At Bentley	L	94-97
	RUTGERS-NEWARK	W	57-56
	At Paterson State	L	81-84
	JERSEY CITY STATE	L	58-61
	FDU-MADISON	L	68-73
	At Monmouth	L	73-97
	STEVENS TECH	W	70-47
	DREW	W	92-45
	At Bloomfield	L	73-74
Coach: Lou Torciocollo			

1969-70 (7-13)

	UPSALA	L	81-102
	BENTLEY	L	77-100
	Brooklyn Polytechnic	W	77-68
	MONTCLAIR STATE	L	59-101
	At Rutgers-Newark	W	67-65
	BLOOMFIELD	L	52-69
	NEWARK STATE	W	90-76
	PRATT	L	66-67
	At Newark State	W	74-72
	TRENTON STATE	L	44-74
	At DC Teachers	L	83-91
	At Southeastern	W	78-73
	HUNTER	L	35-51
	PATERSON STATE	L	71-81
	At Jersey City State	L	56-76
	At FDU-Madison	L	66-110
	Monmouth	L	70-87
	Stevens Tech	W	62-47
	At Drew	W	50-45
	At Bloomfield	L	57-72
Coach: Lou Torciocollo			

1970-71 (6-13)

	at Upsala	L	60-67
	STEVENS TECH	W	57-55
	At Montclair State	L	62-85
	ST. ELIZABETH	W	76-75
	RUTGERS-NEWARK	W	58-52
	STEVENS TECH	W	47-46
	BLOOMFIELD	L	45-61
	PRATT	W	87-76
	NEWARK STATE	L	58-63
1/16	at Trenton State	L	58-74
	at Hunter	L	55-73
	FDU-MADISON	L	57-59
	At Salem State	L	69-95
	At Bentley	L	56-75
	At Paterson State	L	92-113

	BROOKLYN POLY.	W	87-80
	At Monmouth	L	79-115
	JERSEY CITY STATE	L	61-89
	DREW	W	90-61
	At Bloomfield	L	69-78
Coach: Lou Torciocollo			

1971-72 (4-16)

	UPSALA	L	60-110
	PRATT	L	74-76
	At Stevens Tech	L	72-91
	MONTCLAIR STATE	L	69-107
	At Rutgers-Newark	L	56-64
	DREW	W	77-66
	STEVENS TECH	L	54-71
	At Newark State	L	58-66
	TRENTON STATE	L	71-88
	HUNTER	L	65-73
	At Southeastern	W	100-62
	At DC Teachers	L	69-87
	At FDU-Madison	L	67-96
	At William Paterson	L	79-92
	N.Y. MARITIME	W	70-45
	BABSON	L	85-87
	MONMOUTH	L	76-114
	At Jersey City State	L	73-97
	At Drew	W	81-70
	At Bloomfield	L	61-96
Coach: Rem Becker			

1972-73 (4-16)

	at Montclair State	L	48-99
11/16	RUTGERS-NEWARK	L	57-60
12/18	STEVENS TECH	L	66-79
	BLOOMFIELD	L	43-58
1/6	NEWARK STATE	L	65-75
	at Trenton State	L	53-83
1/20	at Hunter	L	81-104
1/24	BROOKLYN POLY.	W	73-57
1/27	FDU-MADISON	L	73-85
1/30	at William Paterson	L	68-92
2/2	at Quinnipiac	L	72-94
2/3	at Babson	L	78-87
2/10	at Monmouth	L	63-120
2/16	at N.Y. Maritime	W	83-67
2/17	JERSEY CITY STATE	L	49-83
2/19	DREW	W	71-72
2/23	at Pratt	W	66-56
3/3	at Bloomfield	L	55-72
Coach: Rem Becker			

1973-74 ()

Coach: Rem Becker

1974-75 ()

First year NCAA
Coach: Rem Becker

1975-76 ()

Coach: Rem Becker

1976-77 ()

Coach: Jim Rake

1977-78 ()

Coach: Jim Rake

1978-79 (5-17)

12/8	at Connecticut College	L	69-95
12/9	at Coast Guard	L	26-58
12/13	KEAN	L	51-87
12/16	Yeshiva	L	57-67
1/6	at FDU-Madison	L	72-88
1/8	DREW	L	64-95
1/15	at Ramapo	L	67-80
1/20	Rutgers-Newark	L	76-109
1/27	at Bloomfield	L	63-81
1/31	STATEN ISLAND	W	57-53
2/3	at Jersey City State	L	70-114
2/5	NEW YORK TECH	W	54-50</

All-Time Results

2/23	at Penn State-Capitol	L	51-61
		W	
2/26	at Dominican (NY)	L	97-110
2/28	YESHIVA	W	95-67
	Concordia (NY)	L	74-78

Coach: Jim Rake

1979-80 (21-6)

	St. Joseph's	W	92-57
12/1	NEW YORK TECH	W	39-36
12/4	at Northeastern Bible	W	73-40
12/7	Washington (MD)	L	65-74
	Hunter	L	45-46
12/12	at Kean	W	84-74
12/13	SARAH LAWRENCE	W	90-40
12/15	Dominican (NY)	W	61-58
	St. Joseph's	W	95-36
12/22	PHILA. BIBLE	W	78-52
1/5	Yeshiva	W	84-65
1/7	at Drew	L	60-65
	Ramapo	W	63-59
1/16	CONN. COLLEGE	W	88-58
1/19	Rutgers-Newark	L	44-50
1/22	FDU-MADISON	W	76-74
1/26	at Stevens Tech	W	56-49
2/2	BLOOMFIELD	W	47-44
2/8	N.Y. MARITIME	L	64-70
2/9	STEVENS TECH	W	72-60
2/13	YESHIVA	L	63-70
2/15	at Alvernia	W	61-52
2/16	at United Wesleyan	W	75-56
2/21	DREW	W	54-49
2/23	PENN ST.-CAPITOL	W	75-57
	at Polytechnic	L	60-63
2/29	CONCORDIA (NY)	W	95-68

^ NJIT later awarded forfeit victory

Coach: Jim Catalano

1980-81 (16-9)

11/25	NORTHEAST. BIBLE	W	74-44
12/1	at Yeshiva	W	65-44
	POLYTECHNIC	W	55-38
		W	
12/13	St. Thomas Aquinas	L	76-99
		W	
	LEHMAN	W	46-45
1/6	at Concordia (NY)	W	70-68
1/7	at Bloomfield	L	56-65
1/10	DREW	L	60-86
	Ramapo	L	58-67
1/17	RUTGERS-NEWARK	W	60-53
1/24	STEVENS TECH	W	55-42

	at N.Y. Maritime	L	57-65
2/10	YESHIVA	W	68-46
2/14	at Connecticut College	L	55-62

2/17	BLOOMFIELD	W	64-61
2/18	at Polytechnic	L	52-59

2/23	at Drew	W	65-63
	Cathedral	W	84-73
	At Alvernia	W	68-65
	At Penn-State Capitol	L	66-68

Coach: Jim Catalano

1981-82 (24-5)

	Bard	W	85-24
	Concordia (NY)	W	69-65
11/24	NORTHEAST. BIBLE	W	87-32
11/28	at Trenton State	L	63-72
12/4	at New York Tech	W	72-48
	Cathedral	W	91-62
12/9	Yeshiva	W	60-59
	MIT	W	73-53
	Florida Tech	W	69-65
1/9	at Drew	L	70-79
	Rutgers-Newark	W	73-64
1/23	at Stevens Tech	W	82-62
1/25	at William Paterson	L	63-78
1/27	at Bloomfield	L	50-65
	Mt. St. Vincent	W	96-63
	At Old Westbury	L	58-64
	Mt. St. Vincent	W	60-51
	Yeshiva	W	62-45
	N.Y. Maritime	W	78-63

	St. Joseph's (NY)	W	88-61
	New York Tech	W	55-28
	Stevens Tech	W	77-63
	Drew	W	66-52
	FDU-Madison	W	72-65
	Drew	(ot)	79-73
	N.Y. Maritime	W	88-72
	Baruch	W	79-67
	John Jay	W	81-63

@ ECAC Tournament

ECAC D-III NY-Metro Champions

Coach: Jim Catalano

1982-83 (19-7)

3/2	at N.Y. Maritime	W	63-62
	Staten Island	L	
	@ ECAC Tournament		

Coach: Jim Catalano

1983-84 (12-12)

1/9	at FDU-Madison	W	77-59
-----	----------------	---	-------

Coach: Jim Catalano

1984-85 (22-7)

11/27	MT. ST. VINCENT	W	103-75
11/30	vs. Stevens Tech	W	83-68
		W	
12/6	TRENTON STATE	L	64-66
12/8	N.Y. MARITIME	W	91-70
12/12	at Yeshiva	W	91-61
12/28	vs. Montclair State	W	75-73
12/29	at Upsala	L	82-92
1/4	POLYTECHNIC	W	90-45

1/11	NORWICH	W	75-57
1/12	RUTGERS-NEWARK	W	118-79
1/19	STEVENS TECH	W	83-66
1/21	WILLIAM PATERSON	L	67-70
1/23	BLOOMFIELD	L	66-70
1/26	at Polytechnic	W	94-65
1/31	OLD WESTBURY	W	69-63
2/2	at Upsala	L	81-90
2/6	YESHIVA	W	102-62
2/8	at N.Y. Maritime	W	75-61
2/9	VASSAR	W	96-62
2/11	at St. Thomas Aquinas	L	71-94
	Kean	W	103-84
2/16	at Stevens Tech	L	60-67
2/20	at Drew	W	68-66
2/27		W	89-
3/2	JERSEY CITY ST. @	W	89-84
3/6	LEHMAN @	W	57-55
3/9	USMMA @	W	70-68

@ ECAC Tournament

ECAC D-III NY-Metro Champion

Coach: Jim Catalano

1985-86 (16-10)

@ ECAC Tournament
Coach: Jim Catalano

1986-87 (23-4)

11/21	ROBERTS WESLYN.	L	78-79
	CCNY	W	108-67
12/1	at Queens (NY)	L	68-80
12/3	MT. ST. VINCENT	W	130-51
	N.Y. MARITIME*	W	120-69
	RAMAPO	W	112-84
12/10	at Yeshiva*	W	90-76
	at Polytechnic*	W	108-54
1/5	at Rutgers-Camden	W	74-65
1/7	KEAN	W	85-68
1/13	at Nyack	W	90-77
1/14	TRENTON STATE	L	73-81
1/17	STEVENS TECH*	W	110-62
	POLYTECHNIC*	W	108-54
1/26	at SUNY-Purchase	W	139-30
1/28	at Drew	W	88-54
	at Western Conn.*	W	83-74
2/2	E. STROUDSBURG	W	90-88
2/4	YESHIVA*	W	85-52
	VASSAR	W	74-51
2/9	USMMA	W	73-55
	at Stevens Tech*	W	88-52
	at N.Y. Maritime*	W	94-53
	WESTERN CONN.*	W	93-77
	MT. ST. MARY'S	W	74-55

	LEHMAN @	W	55-49
3/11	OLD WESTBURY @	L	55-61
	* IAC (10-0)		
	@ ECAC Tournament		

Coach: Jim Catalano

1987-88 (22-7)

11/30	at Ramapo	W	85-50
12/2	DREW	W	73-63
12/5	at N.Y. Maritime*	W	103-61
12/9	at Yeshiva*	W	75-68
12/23	at John Jay	W	107-80
12/28	at St. Peter's	L	60-84
12/29	WPI	W	91-78
12/30	FDU-MADISON	L	78-87
1/4	RUTGERS-CAMDEN	L	82-85
1/6	at Kean	L	78-80
1/11	at Webber	W	98-88
1/13	at Trenton State	L	86-111
1/16	at Stevens Tech*	W	93-68
1/18	WILLIAM PATERSON	W	75-70
1/20	POLYTECHNIC*	W	87-57
1/27	PRATT*	W	96-51
1/30	WESTERN CONN.*	W	87-74
2/1	at E. Stroudsburg	L	69-81
2/3	YESHIVA*	W	74-71
2/6	at Vassar	W	74-65
2/8	USMMA	W	100-84
2/10	at Polytechnic*	W	100-55
2/13	STEVENS TECH*	W	72-51
2/15	N.Y. MARITIME*	W	82-55
2/20	at Western Conn.*	L	75-86
2/23	NYACK	W	101-64
	HUNTER @	W	96-81
	At FDU-Madison @	W	92-75
	At Jersey City State @	W	103-93

* IAC (9-1)

@ ECAC Tournament

ECAC D-III Metro Champions

Coach: Jim Catalano (first year full-time)

1988-89 (24-6)

11/18	vs. Albany Pharmacy	W	96-49
11/19	at Hunter	W	83-70
11/23	at Rutgers-Camden	W	81-71
11/26	DAEMEN	W	88-75
11/28	RAMAPO	W	87-83
12/1	at Polytechnic*	W	106-43
12/3	at N.Y. Maritime*	W	91-63
12/7	YESHIVA*	W	95-52
12/21	TRENTON STATE	L	76-96
12/30	JOHN JAY	W	88-60
1/4	KEAN	W	83-81
1/6	DOMINICAN (NY)	W	fft
1/7	MONTCLAIR STATE	L	79-81
1/10	at Inter-American	W	94-75
1/14	STEVENS TECH*	W	114-33
1/18	at Southampton	W	87-86
1/26	at Yeshiva*	W	79-62
1/28	at Western Conn.*	L	67-80
2/1	at Drew	W	88-73
2/6	at USMMA	W	83-70
2/10	at York (NY)	W	107-78
2/11	at Stevens Tech*	W	124-64
2/13	at N.Y. Maritime*	W	108-72
2/15	VASSAR	W	113-62
2/18	WESTERN CONN.*	L	82-84
2/20	POLYTECHNIC*	W	121-57
2/23	at Stony Brook	L	69-75
	Mt. St. Vincent @	W	87-78
	Stony Brook @	W	88-79
	Kean @	L	97-116

* IAC (8-2)

@ ECAC Tournament

Coach: Jim Catalano

1989-90 (19-10)

11/22	RUGERS-CAMDEN	W	92-71
11/29	DREW	W	75-71
12/2	N.Y. MARITIME*	W	110-76
12/6	at Yeshiva*	W	75-74
12/8	vs. Medgar-Evers	W	85-78
12/9	at Utica Tech	L	70-86
12/11	STONY BROOK\$	L	82-88
12/13	SOUTHAMPTON	W	92-77
12/22	BLOOMFIELD	W	89-58
12/23	FDU-MADISON	L	62-67
1/3	LEHMAN	W	90-49

1/15	at Kean	L	100-120
1/18	at Stevens Tech	W	79-67
1/25	YESHIVA*	W	99-63
1/27	STATEN ISLAND\$	W	92-60
1/29	POLYTECHNIC*	W	109-60
1/31	at Mt. St. Vincent*	L	77-81
2/2	at York (NY)	W	103-70
2/6	at USMMA\$	L	68-75
2/8	at John Jay	W	fft
2/10	STEVENS TECH*	W	115-52
	Hunter\$	L	71-98
2/13	at N.Y. Maritime*	W	119-83
2/17	WESTERN CONN.*	L	81-84
	Polytechnic*	W	84-76
	Mt. St. Vincent*	W	106-88
	At Western Conn.*	L	56-97
	Upsala @	W	93-92
	Stony Brook @	L	72-85

* IAC (9-3)

\$ Skyline (1-3)

@ ECAC Tournament

Coach: Jim Catalano

1990-91 (25-5)

12/1	at N.Y. Maritime*	W	121-79
12/3	YESHIVA*	W	86-66
12/5	at Manhattanville\$	W	78-77
12/8	UTICA TECH	W	89-76
12/11	STONY BROOK\$	L	78-81
12/13	HUNTERS\$	W	96-88
12/27	vs. American	W	102-98
1/4	vs. Catholic	W	80-68
1/5	at York (PA)	W	83-71
1/10	POLYTECHNIC*	W	124-55
1/12	at Hunter\$	L	86-96
1/14	STATEN ISLAND\$	W	115-88
1/17	STEVENS TECH*	W	124-74
1/22	USMMA\$	W	82-47
1/26	at Staten Island\$	W	92-72
1/29	at Yeshiva*	W	78-65
2/1	CENTENARY	W	115-74
2/2	DREW	W	83-64
2/4	MANHATTANVILLE\$	W	84-69
2/6	at USMMA\$	W	82-47
2/8	MT. ST. VINCENT*	W	84-69
2/12	N.Y. MARITIME*	W	139-93
2/15	at Polytechnic*	W	119-70
2/16	at Western Conn.*	L	72-83
2/18	at Stevens Tech*	W	101-75
2/20	at Stony Brook	L	79-92
2/21	POLYTECHNIC+	W	115-65
2/22	MT. ST. VINCENT+	W	105-70
2/23	WESTERN CONN.+	W	82-74
2/28	GLASTBORO ST. @	L	80-88

All-Time Results

2/22	Mt. St. Vincent+	W	96-72
3/7	John Jay@	W	106-84
3/11	FDU-Madison@	W	79-76
3/14	Glassboro State@	L	84-91
* IAC (9-0)			
\$ Skyline (6-4)			
+ IAC Tournament			
@ ECAC Tournament			
Coach: Jim Catalano			

1992-93 (22-4)

11/30	YESHIVA*	W	83-52
12/2	at Manhattanville\$	W	91-74
12/5	STEVENS TECH*	W	104-56
12/7	STATEN ISLAND\$	W	104-72
12/9	at Stony Brook\$	L	69-80
12/11	vs. Lycoming	W	94-55
12/12	at Western Maryland	W	78-73
1/7	AMERICAN (PR)	W	81-67
1/9	HUNTERS	W	85-80
1/17	at N.Y. Maritime*	W	96-55
1/19	at USMMA\$	W	94-78
1/21	at Staten Island\$	W	109-85
1/23	POLYTECHNIC*	W	115-43
1/25	USMMA*	W	84-43
1/27	at Adelphi	L	73-78
1/30	at Hunter\$	L	67-75
2/2	MANHATTANVILLE\$	W	67-60
2/5	MT. ST. VINCENT*	W	123-95
2/7	at Polytechnic*	W	123-67
2/11	STONY BROOK\$	W	82-62
2/15	at Stevens Tech*	W	99-54
2/18	at Yeshiva*	W	92-59
2/20	at Bard*	W	106-50
2/23	vs. Stevens Tech+	W	90-63
2/25	vs. Yeshiva+	W	71-50
3/6	Hunter@	L	70-83

* IAC (9-0)
\$ Skyline (8-2)
+ IAC Tournament
@ NCAA Tournament
NCAA Second Round
Coach: Jim Catalano

1993-94 (23-4)

12/4	vs. Wesley	W	93-72
12/5	at York (PA)	L	56-67
12/10	at USMMA\$	W	65-58
1/3	YORK (NY)	W	89-62
1/5	USMMA\$	W	76-57
1/7	vs. Clarkson	W	77-57
1/8	at Wilkes	L	60-74
1/13	at Hunter\$	L	77-92
1/15	at Stevens Tech*	W	87-49
1/22	at Polytechnic*	W	113-68
1/25	at Yeshiva*	W	95-55
1/29	HUNTERS	W	84-62
2/1	MANHATTANVILLE\$	W	96-64
2/3	at Staten Island\$	W	77-66
2/5	at Mt. St. Vincent\$	W	94-72
2/7	POLYTECHNIC\$	W	96-54
2/10	at Stony Brook\$	W	66-61
2/14	STEVENS TECH*	W	74-52
2/16	N.Y. MARITIME*	W	76-63
2/18	at Manhattanville\$	W	69-60
2/19	BARD*	W	112-47
2/20	YESHIVA*	W	61-44
2/24	YESHIVA+	W	75-55
2/26	STONY BROOK\$	W	72-54
2/28	STATEN ISLAND\$	W	92-67
3/5	RICH. STOCKTON@	L	69-74
3/7	N.Y. MARITIME+	W	81-58

* IAC (8-0)
\$ Skyline (10-1)
+ IAC Tournament
@ NCAA Tournament
NCAA First Round
Coach: Jim Catalano

1994-95 (28-2)

11/18	vs. Goucher	W	88-75
11/19	vs. Elmira	W	87-77
11/22	at Yeshiva*	W	96-58
11/29	MT. ST. MARY\$	W	102-60
12/12	STATEN ISLAND\$	W	79-74
12/28	at St. Thomas	W	82-75
1/2	at Staten Island\$	L	76-79
1/4	USMMA\$	W	114-61

1/13	HAVERFORD	W	105-83
1/15	at Stevens Tech*	W	98-69
1/17	at Bard*	W	103-62
1/19	STEVENS TECH*	W	126-79
1/21	POLYTECHNIC*	W	100-47
1/23	MT. ST. VINCENT	W	72-58
1/28	at Hunter\$	W	74-62
1/31	at Manhattanville\$	W	99-56
2/1	vs. Yeshiva*	W	75-55
2/7	at Polytechnic*	W	107-58
2/11	USMMA\$	W	83-77
2/13	HUNTERS	W	86-61
2/15	at N.Y. Maritime*	W	74-73
2/17	MANHATTANVILLE\$	W	92-59
2/19	at Mt. St. Mary\$	W	104-71
2/21	vs. N.Y. Maritime+	W	88-63
2/23	at Mt. St. Vincent+	W	86-77
2/26	SOUTHERN VT.	W	98-79
3/2	YORK (NY)@	W	87-70
3/4	JERSEY CITY ST. @	W	97-86
3/10	HAMILTON@	W	96-86
3/11	ROWAN@	L	87-101

* IAC (8-0)
\$ Skyline (9-1)
+ IAC Tournament
@ NCAA Tournament
NCAA Elite Eight
Coach: Jim Catalano

1995-96 (17-10)

11/17	vs. Daemen	L	96-108
11/18	vs. Lehman	W	93-83
11/21	BARD*	W	127-40
11/28	MT. ST. MARY\$	W	95-93
11/30	at Centenary\$	L	91-101
12/2	STATEN ISLAND	L	75-86
12/4	at Yeshiva*	W	71-57
12/9	at Polytechnic*	W	77-55
12/29	at Occidental	L	73-88
12/30	vs. LaVerne	L	80-88
1/3	MT. ST. VINCENT*\$	W	78-73
1/13	STEVENS TECH*	W	78-67
1/18	CENTENARY\$	W	91-52
1/20	at USMMA\$	L	68-84
1/22	at Mt. St. Vincent*\$	L	80-81
1/26	at Hunter	W	81-78
1/29	YESHIVA*	W	91-64
1/31	at Manhattanville\$	L	82-86
2/3	at Stevens Tech*	W	94-90
2/6	POLYTECHNIC*	W	98-70
2/7	at Mt. St. Mary\$	L	82-93
2/10	USMMA\$	W	72-68
2/14	N.Y. MARITIME*	W	81-69
2/17	MANHATTANVILLE\$	W	85-62
	At Stevens Tech+	W	87-76
	Vs. Mt. St. Vincent+	W	74-64
	Vs NYU @	L	88-105

* IAC (9-1)
\$ Skyline (5-5)
+ IAC Tournament
@ NCAA Tournament
NCAA First Round
Coach: Jim Catalano

1996-97 (18-9)

11/22	UCONN-STAMFORD	W	137-37
11/23	CONCORDIA (NY)	W	70-68
11/26	YESHIVA	W	69-54
11/30	ST. JOSEPH'S (NY)	W	75-38
12/3	MT. ST. MARY*	L	63-78
12/5	at Staten Island	L	46-78
12/7	N.Y. MARITIME*	W	63-62
12/28	at Patten	W	86-78
12/30	at Holy Names	L	54-73
1/4	at Mt. St. Vincent*	W	103-64
1/8	MANHATTANVILLE*	W	60-44
1/18	at USMMA*	L	54-73
1/23	POLYTECHNIC	W	68-58
1/25	at St. Joseph's (NY)	W	72-41
1/27	at Mt. St. Vincent*	L	57-60
1/31	HUNTER	W	85-61
2/3	at Yeshiva	W	64-43
2/5	at Polytechnic	W	56-50
2/7	USMMA*	W	81-60
2/10	BARD	W	88-24
2/12	at Mt. St. Mary*	L	83-85
2/18	at Manhattanville*	L	72-78
2/22	at N.Y. Maritime*	W	66-50

2/25	MOLLOY	L	62-67
2/26	at Yeshiva	W	61-55
2/27	JOHN JAY	W	80-71
3/1*	at Staten Island @	L	62-65
* Skyline (5-5)			
@ ECAC Tournament			
Coach: Jim Catalano			

1997-1998 (12-15)

11/14	at W. Va. Wesleyan	L	73-90
11/15	vs. Glenville State	L	62-70
11/19	at Concordia (NY)*	W	86-82
11/22	at St. Rose*	L	68-87
12/3	DOWLING*	L	59-71
12/6	at Mercy (NY)*	L	71-79
12/10	at Adelphi*	L	59-74
12/13	SOUTHAMPTON*	W	94-83
1/3	at Cal-Riverside	W	65-60
1/7	at Cal-Maritime	W	73-53
1/10	at Dowling*	L	78-81
1/14	QUEENS (NY)*	L	90-92
1/17	PHILA. TEXTILE*	L	49-78
1/19	at C.W. Post*	L	65-72
1/21	at Molloy*	L	73-80
1/24	MERCY (NY)*	W	76-68
1/28	at Queens (NY)*	W	71-69
1/31	MOLLOY*	W	72-65
2/2	NEW YORK TECH*	W	66-64
2/4	at Phila. Textile*	L	64-83
2/7	CONCORDIA (NY)*	W	91-71
2/9	C.W. POST*	W	66-65
2/13	at Southampton*	W	98-93
2/14	at New York Tech*	W	86-71
2/18	ADELPHI*	L	46-64
2/21	ST. ROSE*	L	69-79
2/24	at St. Rose+	L	68-79

* NYCAC (10-12)
First Year Division II
Coach: Jim Catalano

1998-99 (17-13)

11/14	DIST. OF COLUMBIA	W	73-67
11/15	UMASS LOWELL	W	57-54
11/18	at Columbia	L	58-69
12/2	ADELPHI*	W	60-54
12/5	MOLLOY*	W	75-70
12/9	at Phila. Textile*	L	59-61
12/12	ST. ROSE* (ot)	L	74-86
12/29	at Florida Southern	L	87-91
1/2	DOWLING*	L	72-77
1/4	CONCORDIA (NY)*	W	118-74
1/6	at Southampton* (ot)	W	94-91
1/9	at New York Tech*	W	73-65
1/13	QUEENS (NY)*	W	70-62
1/16	at Mercy*	W	95-82
1/18	C.W. POST*	W	70-47
1/20	at Adelphi*	L	64-76
1/23	at Molloy*	L	73-83
1/27	PHILA. TEXTILE* (ot)	L	67-69
1/30	at St. Rose*	W	57-52
2/3	at Concordia (NY)*	L	89-91
2/6	SOUTHAMPTON*	W	82-59
2/8	at Dowling*	L	75-82
2/10	NEW YORK TECH*	W	59-54
2/13	at Queens (NY)*	L	72-85
2/17	MERCY (NY)*	W	68-51
2/20	at C.W. Post* (ot)	W	70-69
2/23	QUEENS (NY)+ (ot)	W	73-71
2/25	at St. Rose+	L	69-89
3/6	NEW YORK TECH@	W	63-62
3/7	MERRIMACK@	L	82-96

* NYCAC (13-9)
+ NYCAC Tournament
@ ECAC Tournament
Coach: Jim Catalano

1999-2000 (15-12)

11/27	PUERTO RICO	W	87-67
12/1	at New York Tech*	L	72-82
12/3	at Nyack	W	94-83
12/4	vs. Roberts Wesleyan	L	83-98
12/8	PHILADELPHIA*	W	85-78
12/11	at Queens (NY)*	L	70-73
12/19	ST. ROSE*	W	91-87
12/21	ADELPHI*	W	80-70
12/28	at Eckerd	L	67-78
12/30	at Tampa	L	75-94
1/3	at Southampton*	W	96-90

1/5	MOLLOY*	L	57-65
1/8	at Mercy*	L	71-88
1/12	DOWLING*	W	73-70
1/15	at C.W. Post*	W	90-80
1/17	CONCORDIA (NY)*	W	78-66
1/19	at Adelphi*	L	74-77
1/22	NEW YORK TECH*	L	56-60
1/26	at Philadelphia*	L	86-93
1/29	QUEENS (NY)*	W	72-63
2/2	SOUTHAMPTON*	L	66-78
2/5	at Molloy*	W	75-68
2/9	MERCY (NY)*	W	92-77
2/12	at Dowling*	W	97-81
2/16	C.W. POST*	W	76-70
2/20	at Concordia (NY)*	W	102-69
2/26	at St. Rose*	L	70-77

* NYCAC (13-9)
Coach: Jim Catalano

2000-01 (14-14)

11/18	ST. ANSELM	L	66-86
11/21	DOMINICAN*	L	61-64
11/29	at Goldkey Beacom*	W	86-85
12/2	vs. Maine Machias	W	101-87
12/3	at Husson	W	77-74
12/6	at Nyack*	W	80-69
12/9	BOWIE STATE	W	91-78
12/15	HOLY FAMILY*	W	90-69
12/19	BLOOMFIELD*	L	78-87
12/29	at Rollins	L	58-79
12/30	vs. Montevallo (OT)	W	93-91
1/9	at USP*	L	78-81
1/11	at Teikyo Post*	L	71-78
1/13	at Felician*	L	55-94
1/17	at Dominican*	L	75-84
1/20	at Bowie State	L	52-68
1/23	at Bloomfield*	L	72-80
1/25	at Wilmington*	W	81-69
1/27	USP*	W	65-42
1/30	CALDWELL*	L	48-52
2/3	GOLDEY BEACOM*	W	75-58
2/6	TEIKYO POST*	L	55-79
2/7	NYACK*	W	81-65
2/10	FELICIAN*	W	72-62
2/12	at Caldwell*	L	46-63
2/14	WILMINGTON*	W	70-67
2/17	at Holy Family*	L	53-65
3/10	vs. St. Rose@	L	58-62

*CACC (10-10)
^ NJIT later awarded forfeit victory
@ ECAC Tournament
Coach: Dr. James Catalano

Note: The information on these pages is as complete as possible based on available information. Any items left blank are missing. Anyone with documentable corrections/additions to these items is asked to contact the sports information office at (973) 596-8324 or mentone@adm.njit.edu.

Opponent Information

East Stroudsburg University

Nov. 16, 7 p.m., at Entwisle Gym
Possible Opponent, Pocono Classic



Location: East Stroudsburg, PA
Founded: 1893
Enrollment: 5,790
Nickname: Warriors
URL: www.esu.edu/athletics/index.htm
Conference: Pennsylvania State Athletic
Colors: Red and Black
President: Dr. Robert J. Dillman
A.D.: Dr. Joy Richman
Head Coach: Mike Power
Record: 11-15 (1 yr.)
Office Phone: (570) 422-3339
E-Mail: michael.power@po-box.esu.edu
Assistants: Mike Yeater
Arena: Koehler Fieldhouse
Last Year: 11-15
MBKB SID: Pete Nevins
Phone: (570) 422-3312
FAX: (570) 422-3586
E-Mail: pete.nevins@po-box.esu.edu
Hotline: (570) 422-3000

St. Anselm College

Nov. 18, 2 p.m., at Manchester, N.H.



Location: Manchester, NH
Founded: 1899
Enrollment: 1,950
Nickname: Hawks
URL: www.anselm.edu/athletics
Conference: Northeast-10
Colors: Blue and White
President: Rev. Jonathan DeFelice
A.D.: Ed Cannon
Head Coach: Keith Dickson
Record: 295-148 (16 yrs.)
Office Phone: (603) 641-7805
E-Mail: kdickson@anselm.edu
Assistants: Sean Ryan, Steve Drecher
Arena: Stoutenburgh Gymnasium
Last Year: 21-7 (NCAA 1st round)
MBKB SID: Kurt Svoboda
Phone: (603) 641-7810
FAX: (603) 641-7172
E-Mail: ksvoboda@anselm.edu
Hotline: (603) 641-7233

Nyack College

Nov. 27, 8 p.m., at Entwisle Gym
Jan. 23, 6 p.m., at Nyack, N.Y.



Location: Nyack, NY
Founded: 1882
Enrollment: 1,000
Nickname: Purple Pride
URL: <http://www.nyackcollege.edu/nyack/programs/athletic/athletic.htm>
Conference: Central Atlantic Collegiate
Colors: Purple and Gold
President: Dr. David E. Schroeder
A.D.: Keith Davie
Head Coach: John D. Jones
Record: First Year
Office Phone: (845) 358-1710 x593
E-Mail: jonesjd@nyack.edu
Assistants: Carl Brooks, Brian Smeal, Kyle Jarrett
Arena: Bowman Gymnasium
Last Year: 12-16
MBKB SID: Drew Brauer
Phone: (845) 358-1710 x591
FAX: (845) 348-1039
E-Mail: brauera@nyack.edu

Wilmington College

Dec. 1, 1 p.m., at New Castle, Del.
Feb. 16, 4 p.m., at Entwisle Gym



Location: New Castle, DE
Founded: 1968
Enrollment: 6,300
Nickname: Wildcats
URL: www.wilmcoll.edu/athletics
Conference: Central Atlantic Collegiate
Colors: Hunter Green and White
President: Dr. Audrey Doberstein
A.D.: Bud Livingston
Head Coach: Bud Livingston
Record: 250-128 (13 yrs)
Office Phone: (302) 328-9435
E-Mail: blivi@wilmcoll.edu
Assistants: Roger Palmer, Michael Romano
Arena: Pratt Gymnasium
Last Year: 18-12
MBKB SID: Steve Lenderman
Phone: (302) 328-9435, option 4
FAX: (302) 328-8045
E-Mail: athletics@wilmcoll.edu

Opponent Information

Dominican College

*Dec. 5, 8 p.m., at Entwisle Gym
Jan. 10, 8 p.m., at Orangeburg, N.Y.*

DOMINICAN
College

Location: Orangeburg, NY
Founded: 1952
Enrollment: 1,900
Nickname: Chargers
URL: www.dc.edu/athletic
Conference: Central Atlantic Collegiate
Colors: Black, White and Red
President: Sr. Mary Eileen O'Brien
A.D.: Joseph Clinton
Head Coach: Joseph Clinton
Record: N/A
Office Phone: (845) 398-3008
E-Mail: joseph.clinton@dc.edu
Associate: Frank Peralta
Assistants: Tony Toapha, Mike Troy, Esteban Diaz
Arena: Hennessy Center
Last Year: 20-9
MBKB SID: Laura Cannon
Phone: (845) 398-3008
FAX: (845) 398-3042
E-Mail: laura.cannon@dc.edu

University of Pittsburgh-Johnstown

*Dec. 7, 3 p.m., at E. Stroudsburg, Pa.
East Stroudsburg Pocono Classic*



Location: Johnstown, PA
Founded: 1927
Enrollment: 2,700
Nickname: Mountain Cats
URL: www.pitt.edu/~upjsport
Conference: Independent
Colors: Navy, Yellow and White
President: Albert L. Etheridge
A.D.: Mike Castner
Head Coach: Robert R. Ukavina
Record: 184-137 (12)
Office Phone: (814) 268-2005
E-Mail:
Assistants: John Sanow
Arena: Sports Center
Last Year:
MBKB SID: Chris Caputo
Phone: (814) 269-2031
FAX:
E-Mail: ccaputo+@pitt.edu

Felician College

*Dec. 10, 7:30 p.m., at Rutherford, N.J.
Jan. 15, 8 p.m., at Entwisle Gym*

FELICIAN
COLLEGE

Location: Lodi, NJ
Founded: 1893
Enrollment: 1,250
Nickname: Golden Falcons
URL: www.felician.edu/athletic
Conference: Central Atlantic Collegiate
Colors: Hunter Green & Goldenrod
President: Sr. Theresa Mary Martin
A.D.: Bob Symons
Head Coach: Darryl Jacobs
Record: 5-21 (1 yr.)
Office Phone: (201) 559-3508
E-Mail: jacobsd@inet.felician.edu
Assistants: Art Redmond, Russ Wiebe
Arena: Job Gymnasium
Last Year: 5-21
MBKB SID: Ben DiNallo Jr.
Phone: (201) 559-3507
FAX: (201) 559-3601
E-Mail: dinallob@inet.felician.edu

Caldwell College

*Dec. 13, 7:30 p.m., at Caldwell, N.J.
Jan. 26, 4 p.m., at Entwisle Gym*



Location: Caldwell, NJ
Founded: 1939
Enrollment: 2,100
Nickname: Cougars
URL: info.caldwell.edu/athletics
Conference: Central Atlantic Collegiate
Colors: Scarlet, White and Gold
President: Sr. Patrice Werner
A.D.: Mark A. Corino
Head Coach: Mark A. Corino
Record:
Office Phone: (973) 618-3260
E-Mail: mcorino@caldwell.edu
Assistants: Dean Johnson, Joe Scott, Nick Del Tufo, Bob Chaewsky
Arena: Student Center Gym
Last Year: 20-8
MBKB SID: Mike Lamberti
Phone: (973) 618-3567
FAX: (973) 618-3377
E-Mail: mlamberti@caldwell.edu
Hotline: (973) 618-3264, option 1

Opponent Information

University of the Sciences in Philadelphia

*Dec. 22, 2 p.m., at Entwisle Gym
Feb. 12, 8 p.m., at Philadelphia, Pa.*



Location: Philadelphia, PA
Founded: 1822
Enrollment: 1,956
Nickname: Devils
URL: www.usip.edu/athletics
Conference: Central Atlantic Collegiate
Colors: Cardinal and Silver
President: Dr. Philip Gerbino
A.D.: Robert C. Morgan
Head Coach: David Pauley
Record: 77-71 (5 yrs)
Office Phone: (215) 596-8817
E-Mail: d.pauley@usip.edu
Assistants: Rich Casey, Dave Conlon, Mike Gallagher
Arena: Rosenberger Alumni Hall
Last Year: 15-15
MBKB SID: Bob Heller
Phone: (215) 295-3133
FAX: (215) 596-8762
E-Mail: r.heller@usip.edu

Nova Southeastern University

Dec. 29, 7 p.m., at Ft. Lauderdale, Fla.



Location: Fort Lauderdale, FL
Founded: 1964
Enrollment: 4,218
Nickname: Knights
URL: www.undergrad.nova.edu/athletics
Conference: Florida Sun
Colors: Navy, White and Grey
President: Ray Ferrero Jr.
A.D.: Corey B. Johnson
Head Coach: Tony McAndrews
Record: 155-227 (12 yrs.)
Office Phone: (954) 262-8263
E-Mail: tonym@nova.edu
Assistants: Jim Darr, Lang Cook
Arena: George Mayer Gym
Last Year: 8-20
MBKB SID: Vicki Greenbaum
Phone: (954) 262-8261
FAX: (954) 262-3926
E-Mail: greenbau@nova.edu

Barry University

Dec. 30, 6 p.m., at Miami Shores, Fla.



Location: Miami Shores, FL
Founded: 1940
Enrollment: 8,650
Nickname: Buccaneers
URL: www.barry.edu/athletics
Conference: Sunshine State
Colors: Navy, Red and White
President: Sr. Jeanne O'Loughlin
A.D.: Michael L. Covone
Head Coach: Cesar Odio
Record: 110-86 (7 yrs.)
Office Phone: (305) 899-3557
E-Mail: codio@mail.barry.edu
Associate: Bill Sullivan
Assistant: Rolando Medina
Arena: Health & Sports Center
Last Year: 18-11
MBKB SID: Dennis Jezek Jr.
Phone: (305) 899-3897
FAX: (305) 899-3556
E-Mail: djezek@mail.barry.edu
Hotline: (305) 899-3571

Teikyo Post University

*Jan. 3, 8 p.m. at Entwisle Gym
Feb. 5, 8 p.m. at Waterbury, Conn.*



Location: Waterbury, CT
Founded: 1890
Enrollment: 1,400
Nickname: Eagles
URL: www.teikyopost.edu/athletics
Conference: Central Atlantic Collegiate
Colors: Forest Green and White
President: Dr. John Jay DeTemple
A.D.: Daniel B. Mara
Head Coach: Tom Curle
Record:
Office Phone: (203) 596-4533
E-Mail: tcurle@teikyopost.edu
Assistants: Phil Gamble, Will Johnson, J.J. DeTemple
Arena: Drubner Center
Last Year: 14-13
MBKB SID: Tom Curle
Phone: (203) 596-4533
FAX: (203) 596-4695
E-Mail: tcurle@teikyopost.edu

Opponent Information

Holy Family College

Jan. 5, 4 p.m., at Philadelphia, Pa.

Feb. 2, 4 p.m., at Entwisle Gym



Location: Philadelphia, PA
Founded: 1954
Enrollment: 2,200
Nickname: Tigers
URL: www.hfc.edu/sports
Conference: Central Atlantic Collegiate
Colors: Blue and White
President: Sr. Francesca Olney
A.D.: Sandra Michael
Head Coach: Dan Williams
Record: 337-153 (15 yrs.)
Office Phone: (215) 637-2603
E-Mail: dwilliams@hfc.edu
Assistants: Dr. John Scanlon, John Kuvik, George O'Brien, Chris Berry, Bob Shay
Arena: College Center
Last Year: 24-11
MBKB SID: Bob Shay
Phone: (215) 637-2603
FAX: (215) 637-6675
E-Mail: rshay@rohmmaas.com

Bloomfield College

Possible Opponent, Pocono Classic

Jan. 8, 7:30 p.m., at Bloomfield, N.J.

Feb. 14, 8 p.m., at Entwisle Gym



Location: Bloomfield, NJ
Founded: 1868
Enrollment: 2,000
Nickname: Deacons
URL: www.bloomfield.edu/athletics
Conference: Central Atlantic Collegiate
Colors: Red and Gold
President: Dr. John F. Noonan
A.D.: Sheila Wooten
Head Coach: Jack Sullivan
Record: 9-18 (1 yr.)
Office Phone: (973) 748-9000 x374
E-Mail:
Assistants: Gerald Holmes
Arena: Bloomfield College Gymnasium
Last Year: 9-18
MBKB SID: Steve Patchett
Phone: (973) 748-9000 x780
FAX: (973) 743-2040
E-Mail: steve_patchett@bloomfield.edu

Goldey-Beacom College

Jan. 19, 3 p.m., at Wilmington, Del.

Feb. 9, 4 p.m., at Entwisle Gym



Location: Wilmington, DE
Founded: 1896
Enrollment: 2,000
Nickname: Lightning
URL: goldey.gbc.edu/athletics
Conference: Central Atlantic Collegiate
Colors: Blue and Gold
President: Mohammad Ilyas
A.D.: Chris Morgan
Head Coach: Mike Colella
Record:
Office Phone: (302) 225-6352
E-Mail:
Assistants: Kenny Mitchell, Drew Matthews, Toby Colella, John Koziol
Arena: MBNA America Hall
Last Year: 5-22
MBKB SID: Frank Aiello
Phone: (302) 225-6334
FAX: (302) 998-6823
E-Mail: aiellof@gbc.edu

Shaw University

Feb. 23, 4 p.m., at Raleigh, N.C.



Location: Raleigh, NC
Founded: 1865
Enrollment: 2,600
Nickname: Bears
URL: www.shawbears.com
Conference: Central Intercollegiate Athletic
Colors: Maroon and White
President: Dr. Talbert O'Scail Shaw
A.D.: Alfonza L. Carter
Head Coach: Joel Hopkins
Record:
Office Phone: (919) 546-8289
E-Mail: jhopkins@shawu.edu
Assistants: Cleo Hill, Byron Williams
Arena:
Last Year: 15-10
MBKB SID: Lecounte Conaway
Phone: (919) 546-8279
FAX: (919) 546-8299
E-Mail:

Directions to NJIT

Garden State Parkway (GSP): Take exit 145 to Route 280 East, then follow Route 280 East directions.

New Jersey Turnpike: Take exit 15W to Route 280 West, then follow Route 280 West directions.

Route 280 West: After drawbridge, take Exit 14B (Broad Street/King Blvd.). At bottom of exit ramp, make a left. Go one block to stop sign. Make a left on King Blvd. Go five lights to Warren Street. Make a right on Warren Street. Go two blocks to Colden Street. Make a left on Colden Street. Follow signs to NJIT Parking Deck.

Route 280 East: Take Exit 13 (First Street/Newark). At light, make a right on First Street. Go three lights to W. Market Street. Make the soft left on W. Market Street. Go four lights to King Blvd. Make a left on King Blvd. Go one light to Warren Street. Make a left on Warren Street. Go two blocks to Colden Street. Make a left on Colden Street. Follow signs to NJIT Parking Deck.

Route 1 & 9 North & South: Take exit marked Newark, Route 21 (McCarter Highway). Cross bridge. At light at end of bridge, make quick left then quick right for Broad Street. (There are clear signs for Broad Street) Go about 1 mile. Make a left on Court Street. Make a right at third light on King Blvd. Make a left at fifth light on Warren Street. Go two blocks to Colden Street. Make a left on Colden Street. Follow signs to NJIT Parking Deck.

Route 78: Take Route 78 to the Garden State Parkway. Follow GSP directions.

Route 22: Take Route 22 to Route 21 North. Follow directions for Route 21 North.

Route 21 North: Cross bridge. At light at end of bridge, make quick left then quick right for Broad Street. (There are clear signs for Broad Street.) Go about 1 mile. Make a left on Court Street. Make a right at third light on King Blvd. Make a left at fifth light on Warren Street. Go two blocks to Colden Street. Make a left on Colden Street. Follow signs to the NJIT Parking Deck.

Route 21 South: From 21 South, turn right on Bridge Street. Turn left on Broad Street. Go one block and turn right on Washington Place. Go one block and

turn left on Halsey Street. Go one block and turn right on Central Avenue. Make the third left on King Blvd. At first light, turn right on Warren Street. Go two blocks to Colden Street. Make a left on Colden Street. Follow signs to NJIT Parking Deck.

New York Thruway: Thruway to Exit 14A, Garden State Parkway. Follow GSP directions above.

George Washington Bridge: NJ Turnpike South to Exit 15W. Follow Route 280 West directions above.

Lincoln Tunnel: West on Route 3 to NJ Turnpike South to Exit 15W. Follow Route 280 West directions above.

From Brooklyn, Queens and Long Island: Take Verrazano-Narrows Bridge (Interstate 278) and follow 278 across Staten Island. Cross Goethels Bridge. Follow signs to New Jersey Turnpike North then follow New Jersey Turnpike directions above.



Athletics/Phys. Ed. Staff



Sharon Beverly
Head Women's Basketball
Asst. AD/SWA
(973) 596-3633
beverly@adm.njit.edu



Joe Caiola
Assistant Director of Athletics/
Business & Facilities
(973) 642-7224
caiola@adm.njit.edu



Brian Callahan
Head Baseball
(973) 596-5827
brianca16@aol.com



Jim Casciano
Head Men's Basketball
Assistant Director of Athletics
(973) 596-5727
casciano@adm.njit.edu



Duane Felczak
Assistant Director of
Physical Education
(973) 596-3637
felczak@adm.njit.edu



Kathleen Heitzman
Assistant Director of Athletics/
NCAA Compliance
(973) 596-5278
heitzman@adm.njit.edu



Ricky Hill
Head Men's Soccer
(973) 596-5219
hill@adm.njit.edu



Lenny Kaplan
Director of Athletics
(973) 596-3636
kaplan@adm.njit.edu



Mark Mentone
Coordinator of Sports
Information Services
(973) 596-8324
mentone@adm.njit.edu



Janusz Mlynek
Co-Head M/W Fencing
(973) 596-3636
mlynekfencing@aol.com



Roger Olean
Athletic Trainer
(973) 596-3623
olean@adm.njit.edu



Witold Rak
Co-Head M/W Fencing
(973) 596-3636
wrak@erols.com



Tom Romano
Head Women's Soccer
Head M/W Swimming
Intramural Director
(973) 596-2928
coachnjit@aol.com



Anthony Valbrun
Head Women's Volleyball
(973) 596-3636
tilapin@aol.com



John Walker
Front Desk Attendant
Equipment Specialist
(973) 596-5730



Vinnie Ann Zinni
Department Secretary
(973) 596-3636
costanza@adm.njit.edu

NJIT Athletic Hall of Fame

<i>Name</i>	<i>Grad. Year</i>	<i>Contribution</i>	<i>Sport(s)</i>	<i>Years</i>	<i>Year of Induction</i>
BAUDER, Fred "Coach"	—	Coach	M-Basketball	1932-61	1989
BAKUN, Myron	1967	Athlete	M-Soccer	1964-66	1991
BLUM, Raymond E.	1950	Distinguished Alum.	Speedskating/Cycling	—	1996
BORJA, Hernan "Chico"	1981	Athlete	M-Soccer	1977-80	1986
BORNAKO, Gregory "Egor"	1970	Athlete	M-Fencing	1966-70	1987
BOWSER, Hamilton V.	1952	Athlete	M-Fencing	1948-52	1989
BRADLEY, Thomas	1978	Athlete	M-Swimming	1974-78	1990
CRUZ, Edward	1963	Athlete	M-Soccer	1959-62	1995
DAWSON, Marilyn E.	1986	Athlete	WVB/WBKB/SB	1982-86	1991
DeVITO, Louis	1960	Athlete	M-Soccer/M-Fencing	1956-60	1992
DIAS, Joe A.	1977	Athlete	M-Soccer	1973-76	1993
DRURY, Eugene M.	1963	Athlete	M-Tennis	1960-63	1988
ETIENNE, Yves	1979	Athlete	M-Volleyball	1976-78	1990
FEHN, Gilbert F.	1940	Athlete	M-Basketball/M-Tennis	1936-40	1992
FITZGERALD, Joseph M.	—	Coach Asst. Coach	M-Basketball M-Basketball	1961-66 1952-61	1986
FLEISHER, Seymour "Zoom"	1951	Athlete	M-Basketball	1947-51	1992
GAGLIARDO, Salvatore A.	1985	Athlete	M-Basketball	1981-85	1995
GALLAGHER, Thomas G.	1985	Athlete	M-Basketball	1981-85	1991
GIOVANNOLI, Arnold L.	1953	Athlete	M-Basketball	1950-53	1993
GOLDRICK PITT, Elizabeth M.	1990	Athlete	WVB/SB/WBKB/WTen	1985-90	1995
HAASE, Jay W.	1975	Athlete	M-Fencing	1971-75	1988
HAUSSER, Paul C.	—	Administrator Coach	— Fencing	1953-91 1954-88	1990
HUBEY, Ali	1972	Athlete	M-Soccer	1968-71	1990
HURTADO, Fabian	1975	Athlete	M-Soccer	1970-73	1987
KASBARIAN, Raymond P.	1966	Founder/Athlete	Judo	1962-66	1989
KETZNER, Robert Shelby	—	Coach	Rifle	1962-86	1987
KHOWAYLO, Alex	1969	Athlete	M-Soccer	1960-63	1996
LUBETKIN, Charles "Tudy"	1953	Athlete	M-Basketball/M-Track	1949-52	1994
LYNCH, Robert K.	1984	Athlete Coach	M-Fencing M-Fencing	1977-80 1986-91	1993
McDONALD, Dan	1984	Athlete	Baseball	1981-84	1991
OLSEN, Richard J.	1969	Athlete	M-Basketball	1965-69	1988
OLSON, George R.	1977	Athlete	Baseball	1974-77	1987
ROGERS, Warren E.	1988	Athlete	M-Basketball	1983-87	1993
ROMULUS, Rudy	1991	Athlete	M-Volleyball	1988-91	1996
SIMON, J. Malcolm	—	Coach Athletics Director	M-Soccer —	1955-83 1983-94	1994
SKURLA, Peter J.	1941	Athlete	Bowling	1937-41	1992
SWANSON, Robert F.	—	Athletics Director	—	1947-82	1986
TOSTATO, Lawrence P.	1956	Athlete	M-Basketball/Baseball	1952-56	1987
TUBELLO, Jeffrey	1976	Athlete	Rifle	1972-76	1988
WALSH, John J.	1966	Athlete	MSoc/MBKB/Baseball	1962-66	1986
WASNIEWSKI, Frank	1980	Athlete	M-Tennis	1977-80	1990
WOROBEC, Myron S.	1966	Athlete	M-Soccer	1962-65	1994
YONEZUKA, Yoshisada	—	Founder/Coach	Judo	1962-??	1991
ZORN, Werner	1962	Athlete	M-Soccer	1958-61	1988

CENTRAL ATLANTIC
CACC
COLLEGIATE CONFERENCE

When NJIT reclassified its athletic programs to NCAA Division II from Division III in 1997, the Highlanders joined the New York Collegiate Athletic Conference (NYCAC). After three years of NYCAC play, the Highlanders began a new era in the fall of 2000 when they became members of the Central Atlantic Collegiate Conference (CACC).

NJIT is the only school in the 12-member CACC with full NCAA membership. The other member institutions possess provisional NCAA status, as they are in the process of switching affiliation from the National Association of Intercollegiate Athletics (NAIA).

The CACC has allowed the Highlanders to save tremendously on travel time and costs. NJIT is centrally located in the conference, and three other member schools are in New Jersey, creating the opportunity for heated local rivalries.

Due to its NCAA status, NJIT cannot participate in the CACC postseason tournament until 2002-03. The Highlanders are eligible for both the NCAA and ECAC Division-II playoffs on an at-large basis.

2001-02 Preseason Coaches Poll: 1. Caldwell College; 2. Wilmington (Del.) College; 3. Dominican (N.Y.) College; 4. Teikyo Post University; 5. Holy Family College; **6. NJIT**; 7t. Felician College; 7t. University of the Sciences in Philadelphia; 9. Bloomfield College; 10. Nyack College; 11. Goldey-Beacom College.

2001 CACC Tournament

February 22

#1 Dominican 75, #8 Bloomfield 53
#2 Caldwell 73, #7 Nyack 51
#3 Wilmington 94, #6 USP 62
#4 Holy Family 76, #5 Teikyo Post 73

February 24

Wilmington 61, Caldwell 51
Holy Family 69, Dominican 58

February 27

Wilmington 74, Holy Family 67

All-Tournament Team

Jason Brooks, Bloomfield
Ontario Edwards, Teikyo Post
Jim Gamble, Holy Family
Tre Gardner, Caldwell
Wayne Gibson, Nyack
Dwayne Earl, Wilmington
Gil Smallboard, Wilmington
Jamar Snider, Dominican
Anthony Starace, Holy Family
Jay Wood, USP

MVP

Dwayne Earl, Wilmington

2000-01 STANDINGS

	CACC	Overall
Dominican	16-4 .800	20-9 .690
Caldwell	16-4 .800	20-8 .714
Wilmington	13-7 .650	18-12 .600
Holy Family	12-8 .600	24-11 .686
Teikyo Post	11-9 .550	14-13 .519
USP	10-10 .500	15-15 .500
NJIT	10-10 .500	14-14 .500
Nyack	8-12 .400	12-16 .429
Bloomfield	6-14 .300	9-18 .333
Felician	5-15 .250	6-20 .231
Goldey-Beacom	4-16 .200	5-22 .185

ALL-CONFERENCE TEAM

Dwayne Earl, *Wilmington*
Ontario Edwards, *Teikyo Post*
John Fitzsimmons, *Dominican*
Ricky Fletcher, *Nyack*
Tre Gardner, *Caldwell*
Herbie Hall, *Bloomfield*
Omar Howard, *Wilmington*
Sulaiman Muhammad, *Caldwell*
Ahmad Rasool, NJIT
Jamar Snider, *Dominican*
Jason Wood, *USP*
Player of the Year
John Fitzsimmons, *Dominican*
Coach of the Year
Joe Clinton, *Dominican*
Team Sportsmanship Award
Dominican

LEADERS

Scoring	GP	Pts.	PPG
Ron Christy, Teikyo Post	15	278	18.5
Jason Wood, USP	29	500	17.2
John Fitzsimmons, Dominican	26	441	17.0
Fred Price, Nyack	24	405	16.9
Herbie Hall, Bloomfield	26	423	16.3

Rebounding	GP	Reb.	RPG
Ricky Fletcher, Nyack	27	351	13.0
Paul Tonkovich, Caldwell	26	272	10.5
Sulaiman Muhammad, Caldwell	26	203	7.8
Armand Skrine, Teikyo Post	26	200	7.7
Jim Gamble, Holy Family	28	208	7.4

Assists	GP	Reb.	RPG
Tre Gardner, Caldwell	25	163	6.5
Omar Howard, Wilmington	26	160	6.2
James Frauenberg, Dominican	26	151	5.8
Tim Ryan, Holy Family	32	173	5.4
Matt Crawford, USP	29	143	4.9

Best Wishes For A "Winning Season!"



From Your Friends At:



- Lowest Prices
- Tremendous Selection Of New & Used Vehicles
- Truck & Sport Utility Headquarters
- Credit Specialists
- State-Of-The-Art Service Department
- Free Shuttle Service
- Saturday Service Hours
- Friendly, No Pressure Atmosphere



Visit us on the web @ www.wymanford.com

1713 SPRINGFIELD AVE., MAPLEWOOD

973-761-6000



The 2001-02 NJIT Men's Basketball Team: **Seated (L-R)**: Phil Renaud, Randle DeFalco, Matt Martins, Olivier Eyheramendy, Justin Feintuch, Ahmad Rasool, Mars Mellish, Ricky Urban. **Standing (L-R)**: Rich Spottswood (Asst. Coach), William Abanyie (Manager), Kevin Burns, Joe Accurso, Demond Cowins, Yung-Kwang Kiely, Jeff Sonnema (Asst. Coach), Jim Casciano (Head Coach). **Missing**: Anthony Walker (Asst. Coach).

NJIT MEN'S BASKETBALL

2001-02 SCHEDULE

Day	Date	Opponent	Time
Fri.	Nov. 16	EAST STROUDSBURG	7:00
Sun.	Nov. 18	at St. Anselm	2:00
Tue.	Nov. 27	NYACK*	8:00
Sat.	Dec. 1	at Wilmington (Del.)*	1:00
Wed.	Dec. 5	DOMINICAN (N.Y.)*	8:00
Fri.-	Dec. 7-	at East Stroudsburg Tournament	
Sat.	Dec. 8	w/Pitt-Johnstown, Bloomfield	
Mon.	Dec. 10	at Felician*	7:30
Thu.	Dec. 13	at Caldwell*	7:30
Sat.	Dec. 22	U.S.P.*	2:00
Sat.	Dec. 29	at Nova Southeastern	7:00
Sun.	Dec. 30	at Barry	6:00
Thu.	Jan. 3	TEIKYO POST*	8:00
Sat.	Jan. 5	at Holy Family*	4:00
Tue.	Jan. 8	at Bloomfield*	7:30
Thu.	Jan. 10	at Dominican (N.Y.)*	8:00
Tue.	Jan. 15	FELICIAN*	8:00
Sat.	Jan. 19	at Goldey-Beacom*	3:00
Wed.	Jan. 23	at Nyack*	6:00
Sat.	Jan. 26	CALDWELL*	4:00
Sat.	Feb. 2	HOLY FAMILY*	4:00
Tue.	Feb. 5	at Teikyo Post*	8:00
Sat.	Feb. 9	GOLDEY-BEACOM*	4:00
Tue.	Feb. 12	at USP*	8:00
Thu.	Feb. 14	BLOOMFIELD*	8:00
Sat.	Feb. 16	WILMINGTON (Del.)*	4:00
Sat.	Feb. 23	at Shaw	4:00

* Central Atlantic Collegiate Conference

Home games (CAPS) at Entwistle Gymnasium