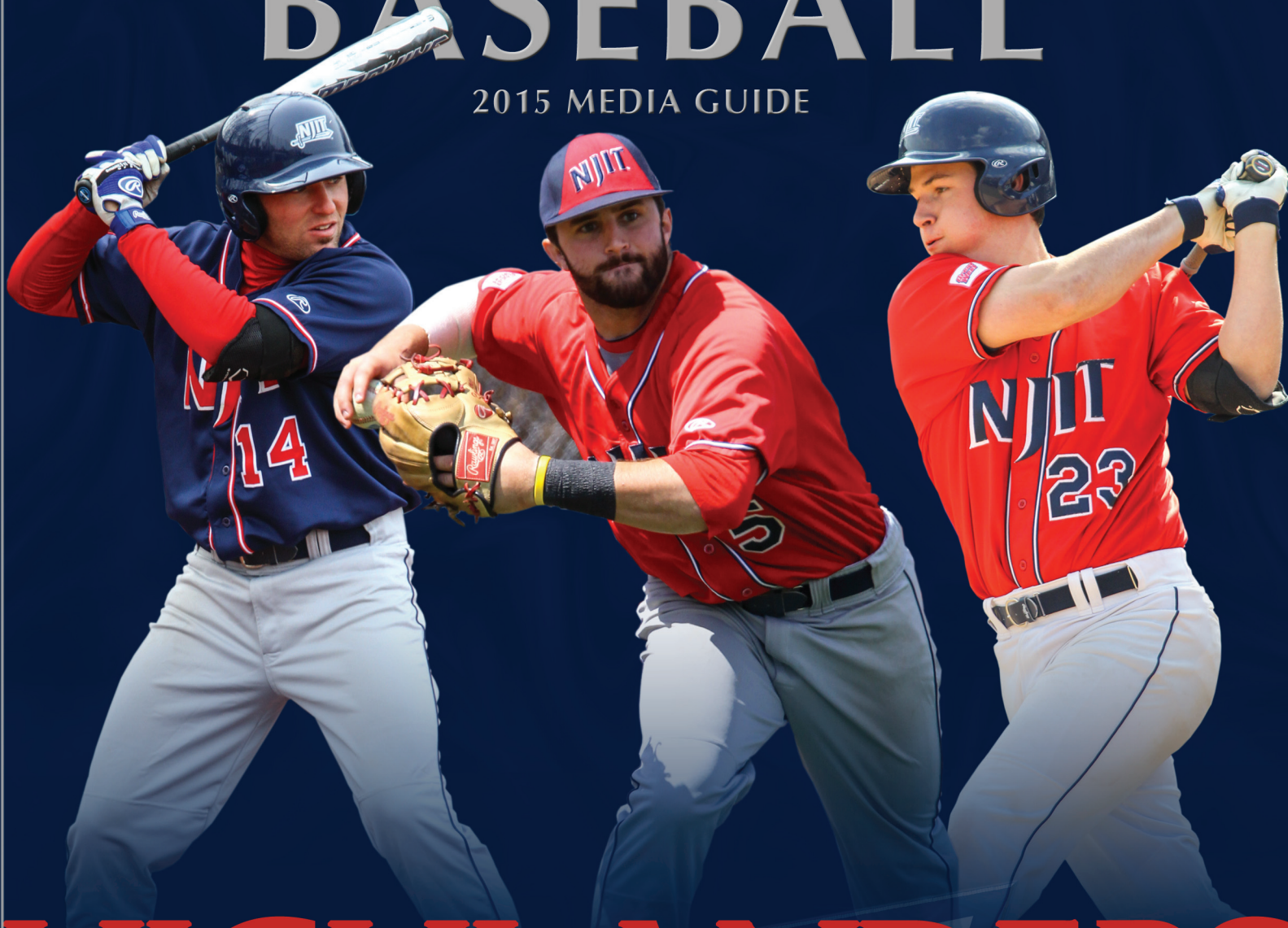




NEW JERSEY INSTITUTE OF TECHNOLOGY

# BASEBALL

2015 MEDIA GUIDE



# HIGHLANDERS

[njithighlanders.com](http://njithighlanders.com)









## NJIT Highlanders Baseball

### School Sports Team

[Like](#)[Follow](#)[Message](#)[Timeline](#)[About](#)[Photos](#)[Likes](#)[Videos](#)

**Follow us on Facebook: <https://www.facebook.com/NJITHighlanders> (or search NJIT Highlanders Baseball)**  
**Follow us on Twitter: <https://twitter.com/NJITHighlanders>**

## TABLE OF CONTENTS

About NJIT	2-7
University Administration	8-11
Athletics Senior Staff	11
Sports Medicine	12-13
Strength & Conditioning	14-15
Academic Enrichment	15-16
Remembering Joe Caiola	17
Athletic Administration & Coaching Staff	18
NJIT in Division I	19-21
Athletics Facilities	22-26
About Newark	27
Sports & Entertainment Around Newark	28-29
Head Coach Brian Guiliana	30-31
Assistant Coaches	32-34
2015 Roster	35
2014 Statistics	36-37
Program History	38-39
All-Time School Records	40-43
Division I School Records	44-49
Year-by-Year	50-61
All-Time Roster	62-64
Hall of Fame	65
Directions to NJIT	66

## BASEBALL

**Head Coach (alma mater, year):** Brian Guiliana (George Washington '96)  
**Phone/Email:** 973-596-5278; [guiliana@njit.edu](mailto:guiliana@njit.edu)  
**Career Record:** 40-59 (2)  
**Assistant Coaches:** Robbie McClellan, Grant Neary  
**Volunteer Coach:** Craig Anderson  
**Captain:** Mike Rampone, Ed Charlton  
**2014 overall/conf. (finish):** 20-25

## QUICK FACTS

**Location:** University Heights, Newark, NJ  
**Founded:** 1881  
**Enrollment:** 10,130 (total) / 7,286 (undergraduate)  
**NJIT website:** [www.njit.edu](http://www.njit.edu)  
**Nickname/Colors:** Highlanders/  
Red and White (Blue accent)  
**Home Field (capacity):** Bears & Eagles Riverfront Stadium (6,200)  
**Field Dimensions:** LF 302; LCF 364; CF 394; RCF 365; RF 323  
**Affiliations:** NCAA Division I Independent, ECAC  
**University President:** Dr. Joel Bloom, EdD  
**Director of Athletics:** Lenny Kaplan  
**Athletic Department Phone:** 973-596-3636

## WHY HIGHLANDERS?

The home of NJIT, University Heights, was formerly known as the Newark Highlands and NJIT's mailing address used to be High Street, until the thoroughfare was renamed in memory of Dr. Martin Luther King, Jr.

In 2006-07, NJIT athletics, in keeping with its move to NCAA Division I, unveiled a new graphic identity, which included a new Highlanders logo. Developed by CN Foundry for NJIT, the logo depicts the traditional Highlander, whose ferocity and bravery against all odds are the stuff of legend.

## MEDIA RELATIONS

**NJIT Athletics website:**  
[www.njithighlanders.com](http://www.njithighlanders.com)  
**Facebook & Twitter:** @NJITHighlanders  
**Assistant AD for Sports Information:**  
Tim Camp, 973-596-8461/[timothy.camp@njit.edu](mailto:timothy.camp@njit.edu)  
**Assistant SID:** Stephanie Pillari, 973-596-8324/[pillari@njit.edu](mailto:pillari@njit.edu)  
**Assistant SID:** Courtney Caden, 973-596-8485 /[caden@njit.edu](mailto:caden@njit.edu)

## MEDIA INFORMATION

This guide is designed to assist in coverage of NJIT baseball. For home games, the NJIT sports information office will provide official box score 10 minutes following each game. Coach Brian Guiliana and requested players will be available for interviews on the field following a 10-minute cooling off period. Radio broadcast requests should be made at least 10 business days prior to the contest. Requests for coach and player interviews on non-game days should be made through the NJIT sports information office (973-596-8461).

## CREDITS

The 2015 NJIT Baseball Media Guide is a production of the NJIT Sports Information Office in cooperation of the Office of Strategic Communications. Written and edited by Tim Camp and Stephanie Pillari. Cover and interior design by Karyn Olsen Designs. NJIT photographs and information courtesy of University Communications. All interior team and action photography by Larry Levanti. Red Bull Arena photo (p. 29) courtesy of Getty Images/RBNY.



# About NJIT

**NJIT is New Jersey's Science & Technology University. With roots going back to 1881, when it was founded as Newark Technical School, New Jersey Institute of Technology observed its 125th anniversary in 2006.**

**Located in University Heights, Newark, NJ, home to more than 30,000 college students, NJIT's campus is just 10 miles from New York City.**

Playing a critical role in shaping New Jersey's future, NJIT, as a major public technological university, is an important pipeline for the flow of technology into society. The university's educational programs prepare students to be leaders in the technology-dependent economy of the 21st century. University researchers seek new knowledge to improve processes and products for industry. Through public and private partnerships and economic development efforts, the university helps to grow new business ventures that fuel the economy.

In recent years, NJIT has put tens of millions of dollars toward new and improved buildings and facilities on the 48-acre campus, including biomedical engineering labs and a campus center.



## Instructional Programs

NJIT offers an ever-expanding array of educational programs, with many new programs added in the last five years and more to come. In 2014 NJIT lists 125 undergraduate and graduate degree programs through six schools:

- Newark College of Engineering
- College of Architecture and Design
- College of Science and Liberal Arts
- School of Management
- Albert Dorman Honors College
- College of Computing Sciences

NJIT has 277 tenured or tenure track faculty; 99 percent of whom hold doctoral degrees or the highest degree attainable in their field. The student-faculty ratio is 16:1, with over 7,000 undergraduate students and nearly 3,000 graduate students. Our students hail from 33 states and more than 100 countries to rank eighth in the nation for diversity.





Albert Dorman Honors College enrolls more than 500 students who take advantage of honors courses, research opportunities, advising and mentoring. Honors College students have SAT scores ranking in the top 10 percent nationally.

With nearly 50,000 alumni, NJIT is an acclaimed institution.

- *BuzzFeed.com* ranked NJIT as the #1 higher education value nationally when considering annual tuition cost and average starting salary of graduates.
- Top one percent for return on investment and eighth in alumni earning potential among public universities nationwide – *PayScale.com*
- Top 10 percent nationally for return on investment and one of four best buys in New Jersey higher education – *Bloomberg Businessweek*
- Third in nation among America's Most Underrated Colleges – *BusinessInsider.com*
- Top National University – *U.S. News and World Report*
- 149th among national universities overall for its range of undergraduate majors and master's and doctoral degree programs and commitment to groundbreaking research - *U.S. News and World Report*
- An "America's Top College" – *Forbes.com*
- A *Princeton Review* Best College
- Top 200 American research universities – *The Center for Measuring University Performance at Arizona State*
- Top 50 among colleges without a medical school for research expenditures and top 10 among universities whose main research is in engineering – *National Science Foundation*
- Top 10 among technological universities in faculty scholarly productivity – *Academic Analytics*
- Top 100 producers of minority degrees, including fifth in the nation for bachelor's degrees in engineering technologies to all minority students – *Diverse: Issues in Higher Education*



# About NJIT

## Research

NJIT's research expenditures totaled more than \$110 million in FY2014 and faculty members welcome student collaboration on research projects.

As of September 1, 2014, NJIT had 185 issued U.S. Patents and 133 pending U.S. patent applications.

## Economic Development

NJIT is committed to economic development for Newark and the region. The university operates several outreach centers that provide direct technical assistance to the state's businesses with the goal of helping small and medium-sized companies. NJIT is also the home of New Jersey's oldest and largest incubator facility, and was one of the first institutions in the nation to adopt economic development as a fourth mission element, together with instruction, research and community service.

The Enterprise Development Center (EDC) at NJIT is New Jersey's largest high technology and life science business incubator, and one of the largest in the nation. EDC resident companies have attracted more than \$80 million in third-party funding since entering the incubator, and generated revenues of \$50 million last year. The approximately 90 member companies employ roughly 500 people.

## The Career Edge

- NJIT was named in the top 1 percent for return on investment and 8th in alumni earning potential among public universities nationwide by *Payscale.com*.
- Students get a head start on their careers through cooperative education, salaried internships that relate specifically to their field of study.
- The 10 fastest-growing occupations for college graduates include NJIT's newest program areas—physician assistant and physical therapy—as well as computer-related occupations.
- Among the CEOs of the S&P 500 companies, engineering is the single most common undergraduate degree (22 percent of the group). More than half of the CEOs have undergraduate degrees in engineering, business management, science, math, or computing.

## The Global Edge

The diversity in NJIT's student body and faculty prepares graduates to understand and succeed in the global marketplace.



## The Technology Edge

NJIT has been designated one of the nation's most technologically sophisticated universities by *Forbes.com* and a *Princeton Review* survey and the university has received major funding from the National Science Foundation and the National Security Agency in recent years.

## The Academic Edge

- NJIT named a Most Wired College by *Princeton Review*.
- NJIT was the first recipient of the Excellence in Technology Education Award presented by New Jersey Technology Council (NJTC), which annually recognizes outstanding technology companies and individuals who contribute to "growth, achievement, and excellence in diverse technology sectors of New Jersey."
- *Forbes.com* and a *Princeton Review* survey designated NJIT as one of the nation's most technologically sophisticated universities based on factors such as the ratio of computers to students, campus-wide and wireless networks, and technology-enhanced learning.
- NJIT has received major National Science Foundation (NSF) funding to define the next generation of computing applications. Most notable is the creation of *SmartCampus*, a wireless peer-to-peer, location-aware community system that immerses students in a world of wearable computers.
- NJIT has been designated a Center of Academic Excellence in Information Assurance (Homeland Security) Education by the **National Security Agency**.
- NJIT partners with Iowa State University in the Center for Information Protection (Homeland Security), an NSF-supported cooperative research center in information assurance.





# About NJIT



## The Regional Edge

New Jersey, with America's highest concentration of pharmaceutical, hi-tech, biotech, and medical device companies is the place to study technology. It has the nation's highest per capita number of engineers and scientists as residents, while also leading in per capita rate of patents issued. Further, the Newark-New York region is a living laboratory for architecture and building sciences, environmental engineering and transportation. .

## The Research Edge

NJIT has been designated by the State of New Jersey as the Homeland Security Technology Systems Center and NJIT operates the world-renowned Big Bear Solar Observatory.

## A History of NJIT

From the Industrial Revolution to the Information Age, New Jersey Institute of Technology has a rich history with its beginnings developing from the industrial age.

In 1881, an act of the New Jersey State Legislature, recognizing an urgent need, sought a home for what would be the state's technical school. The efforts of Newark's public and private sectors resulted with the opening of Newark Technical School, addressing the state's need.

Over time, the university expanded its curriculum and mission. In 1919, the university established baccalaureate programs in three engineering fields. By the middle of the 20th century, Newark Technical School was transformed into the robust Newark College of Engineering.

The post-war period was one of enormous activity with regular expansion of the campus, as well as the introduction of doctoral level programs. In 1975, with the addition of the New Jersey School of Architecture, the institution had evolved into a technological university, emphasizing a broad range of degrees and dedication to significant research and public service. Newark College of Engineering, stronger than ever, remained intact, but a new university name -- New Jersey Institute of Technology -- reflected the institution's expanded mission.

A broadened mission called for the creation of a residential campus and the opening of NJIT's first dormitory in 1980 began a period of steady growth that continues. Two new schools were established during the 1980s--the College of Science and Liberal Arts (1982) and the School of Industrial Management (1988). The Albert Dorman Honors College was established in 1994, and the College of Computing Sciences, was created in 2001. Beginning in 2009 the College of Architecture and Design was created to house the New Jersey School of Architecture and the new school of Art and Design.





# Administration

## Dr. Joel Bloom

### *President, New Jersey Institute of Technology*

Appointed President of New Jersey Institute of Technology on January 12, 2012 by unanimous



vote of NJIT's Board of Trustees, Joel S. Bloom started his career in industry working as an economist.

He subsequently became an educator and administrator for the New York City public schools. Prior to coming to New Jersey, he worked as a research director and instructor at Teachers College, Columbia University.

In New Jersey, he managed state and federally-funded curriculum development and training centers for the state. From 1983 through 1990, Dr. Bloom served as assistant commissioner in the NJ Department of Education for the Division of General Academic Education. He was responsible for managing many of the education department's initiatives including competency testing, curriculum content standards, pre-school programs, establishment of 17 model effective schools, over 300 grants and contracts, and a \$24 million budget.

Immediately prior to his appointment as President, he served as Interim President from September 2011 until January 2012.

Prior to that, he was NJIT's Vice President for Academic and Student Services, as well as founding dean of the Albert Dorman Honors College.

Indeed, since joining NJIT in July 1990, Dr. Bloom has served the university in many capacities.

Promoted in 1996 to Vice President for Academic and Student Services, he was responsible for nine divisions of the university, including pre-college programs, enrollment management, continuing professional education, career development services, dean of student services, freshman studies, educational opportunity programs, library services, physical education and athletics.

Dr. Bloom was appointed as the first dean of the Albert Dorman Honors College in 1998, in addition to his vice president responsibilities. The Honors College enrolls over 650 students who come from 15 states and several foreign countries. The average SAT score is over 1340 and the majority of the incoming freshman class members graduated in the top 15 percent of their high school class. More than 50 percent of the Honors College students maintain a grade-point average higher than 3.5.

Dr. Bloom is chair of the Science Park Board, treasurer of the NJ President's Council, and treasurer of the NJEDge.Net Board. In addition, he serves as a member of the following boards: the Board for Communities and Schools, Newark Alliance, Philadelphia Alliance for Minority Participation, La Casa de Don Pedro, and the Association of Public and Land-grant Universities Presidents Council. Dr. Bloom has been the recipient of national and state education awards, as well as federal, foundation and corporate grant awards. He has published journal articles and presented papers on school improvement, curriculum development, college transition and student assessment.

Dr. Bloom holds a master's degree and a doctorate from Teachers College, Columbia University. He also earned master's and bachelor's degrees from Hunter College of the City University, New York City.

## Charles J. Fey

### *Vice President for Academic and Student Services*



Dr. Fey joined NJIT in September 2012 with 39 years of leadership experience in student services as Vice President of Academic Support and Student Affairs.

At NJIT, he continues his commitment to creating a campus climate that promotes student achievement and student success. His personal philosophy of student engagement extends to the development of innovative programs that inspire challenging and engaging student experiences and encourage each student to reach for his/her dream and work until it is achieved.

Dr. Fey's strong record of accomplishments demonstrates his deep understanding of emerging issues and trends that affect metropolitan campuses and the students who attend them. In addition to his direct involvement with students, Fey oversees numerous offices and departments at NJIT, including including Intercollegiate Athletics, Recreation and Intramurals, Physical Education.

Fey actively participates in student affairs business on a national level and holds or has held board positions in ACPA, NASPA, and APLU. He was the founding president of the Massachusetts College Personnel Association and was president of the Texas Association of College and University Personnel Association. Fey has received numerous awards including the Esther Lloyd Jones Professional Service Award from ACPA; is a Diamond Honoree of ACPA's Foundation; twice received the Outstanding Service award from the Commission on Administrative Leadership of ACPA; and an exemplary service award from MCPA.

Fey earned his bachelor's degree in liberal arts and his masters of education degree in counselor education, college student personnel services, both from The Pennsylvania State University. He holds a doctorate in higher education administration from Texas A&M University.

Prior to NJIT, he was the Vice President for Student Affairs at The University of Akron; was Vice President for Student Affairs at University of Maryland, Baltimore County (UMBC); Dean of Students at the University of Texas at El Paso; served as Vice President and Dean of Student Life at Our Lady of the Lake University in San Antonio; Dean of Students at St. Mary's University, also in San Antonio; Associate Dean of Student Affairs at Keene (NH) State College; Director of Housing/Resident Life at Catholic University of America; and in numerous student affairs and other administrative posts at Newbury Junior College in Boston.

Married to Melba Ann Fey since 1985, Charlie and Melba have two daughters, Kelly Prestel, living in Boston, and Chelsea Fey, living in Arlington, VA and two sons, Lloyd Lopez and Matt Lopez, who live in San Antonio.



# Administration

## Lenny Kaplan

### *Director of Athletics*



Since taking over as head of NJIT's division of physical education and athletics in August 2000, Lenny Kaplan has been instrumental in guiding NJIT's reclassification to NCAA Division I.

First, Kaplan helped stabilize and expand a program that was entering its fourth year in Division II when he arrived in Newark. In late 2002, after discussions with then-President Dr. Robert A. Altenkirch and then-Vice President Dr. Joel Bloom, Kaplan took on the task of steering NJIT's programs into Division I, a process that reached fruition with the NCAA's granting active Division I status, with full championship eligibility effective September 1, 2009.

Throughout Kaplan's tenure, NJIT has enhanced the athletics program, particularly in areas that benefit the student-athletes directly. A hallmark in achieving that aim was the Highlanders Athletics Campaign, which announced in the summer of 2009 that it had raised \$5.4 million against a goal of \$5 million. Of the \$5 million in the goal, \$3 million was for facilities, \$1.5 million for athletics scholarships, and \$500,000 for program support.

The sports offerings have expanded to its current 19 varsity programs, with the newest, men's lacrosse set to debut in 2015. Since 2004, NJIT has renovated its two main on-campus venues—Lubetkin Field at Mal Simon Stadium and the Estelle and Zoom Fleisher Athletic Center. Further, the newest facility, the Naimoli Family Athletic and Recreational Facility, a 25,600-square foot building opened in March 2011 as a heated and air conditioned space that includes indoor tennis courts used for intercollegiate competition.

On Kaplan's watch, the school signed a 10-year partnership to play all home baseball in the professional Bears and Eagles Riverfront Stadium and later agreed to host basketball in the Prudential Center, the downtown Newark home of the NHL's New Jersey Devils.

Under Kaplan's leadership, many teams achieved regional and national Division II ranking. Success for several women's teams was unprecedented, with basketball, tennis and soccer all reaching postseason play for the first time under his administration.

Additionally, men's volleyball captured a 2007 divisional championship in the Eastern Intercollegiate Volleyball Association and the next year reached the EIVA playoff semifinals hosted by eventual 2008 national champion Penn State.

In 2009-10, NJIT's first full year as an active member of NCAA Division I, the women's volleyball team and senior Sabrina Baby became the school's first national statistical champions at the Division I level, as team and individual leaders, respectively in digs per set. Baby was honored as NJIT's first CoSIDA Academic All-America in the Division I era, earning third-team national honors.

Christian Baumbach made history in 2009 when he was NJIT's first Division I individual sport conference champion, taking first place in the Great West Conference cross country race and in the prestigious IC4A University Division race, a competition held for the 101st time in 2009.

Kaplan guided the Highlanders into the all-sports Great West Conference and the women's tennis team won back-to-back GWC titles in 2011 and 2012. In 2012-13, both NJIT basketball teams captured GWC crowns, with the men winning their regular season title and the women's winning the GWC postseason tournament.

Two Highlanders men's basketball standouts—Isaiah Wilkerson (Class of 2012) and Chris Flores (Class of 2013)—received honorable mention on the Associated Press All-America team, the first such national honorees for NJIT at the Division I level.

Wilkerson continued his career as a professional in the NBA D-League and Flores and women's basketball star Rayven Johnson (Class of 2013) went overseas to professional careers in Germany.

In 2012-13, baseball pitcher Mark Leiter, Jr., was selected by the Philadelphia Phillies organization in the Major League Baseball First-Year Player draft and fellow pitcher Tripp Davis signed as a free agent with the Kansas City Royals organization.

In 2103-14, Marko Drljic became the first NJIT men's soccer player to be selected to the All-Region season honors from the NSCAA at the highest level, earning NSCAA/Continental Tire Division I Men's All-North Atlantic Region honors, while men's tennis player Markus Schultz advanced to the round of 16 at the 2013 USTA/ITA National Regional Championships, the furthest any NJIT tennis player has advanced at the ITA tournament.

Two members of the NJIT men's basketball team, Terrence Smith and Damon Lynn finished the 2013-14 season ranked in the top 4 in the nation—Smith third in individual field-goal percentage and Lynn fourth in 3-point field goals made.

NJIT men's fencer David Kong whose weapon is the foil, earned a 16-place finish at the US National Championships and ranks 24th in the nation and 14th under 20. He placed 18th in the men's foil competition at the 2014 NCAA Fencing Championships, becoming the first NJIT fencer in 10 years to advance to the championships.

John Porteous became the first NJIT track and field athlete to qualify to the 2014 NCAA Track and Field Regional, earning a spot in the men's 400-meter hurdles.

Two NJIT sports, women's tennis and men's soccer, were invited to join automatic qualifying Division I conferences in their respective sports. Women's tennis is in the America East Conference, reaching the AEC final in 2014 and men's soccer is one of programs in the Sun Belt Conference, which is sponsoring the sport in 2014 for the first time since 1995.

Before coming to NJIT, Lenny Kaplan served 11 years at Manhattan College, where he began as Manhattan's director of operations and was assistant athletics director from 1991-2000.

Kaplan, a 1988 graduate of St. John's University with a degree in athletics administration, resides in Merrick, NY, with his wife, Nancy, and their sons, Michael and Joshua.

---

## Athletics Senior Staff



**Andrew Schwartz**  
Senior Associate Athletic Director  
(973) 642-7224 aschwartz@njit.edu



**Alexis Schug**  
Assoc. Director of Athletics/SWA  
(973) 596-8452 schug@njit.edu



**Tim Camp**  
Asst. Director of Athletics/Sports Information  
(973) 596-8461 timothy.camp@njit.edu



**Jayson Smikle**  
Assistant Athletic Director for Compliance  
(973) 596-5278 jsmikle@njit.edu



# Administration

## Sports Medicine

NJIT sports medicine is moving forward with the growth of the Highlanders program. Head trainer Matt Koscs, MS/ATC, oversees the program, ably assisted by assistant trainers Paul Grayner, MED/ATC; Melissa Maskery, MS, ATC; Brittany Vondran, MS/ATC; and, Kyle Tuohy, BS/ATC.



**Matt Koscs, ATC, Head Athletic Trainer**

Matt Koscs, who earned both his bachelor's and master's degrees from University of Delaware, has served NJIT as head trainer since July 2009, a year after he joined the staff as an assistant trainer.

As an undergraduate at Delaware, he was recipient of the Paris Delligatti Memorial Award for Excellence in Athletic Training. He earned his MS in Exercise Science from Delaware in 2008.

Prior to his arrival at NJIT, Matt served three years as the head athletic trainer at Hodgson Vocational Technical High School in Newark, DE, from 2005 to 2008.

In addition to his work at the high school level, he was head athletic trainer for the Delaware Dynasty semi-pro soccer team in Wilmington, as well as with the Kirkwood Soccer Club in New Castle in 2005 and 2006.

He was employed from 2005 to 2008 at Christiana Care Physical Therapy Plus, in Newark, DE, where he was an athletic trainer and was the Director of Athletic Training Services in a clinical setting.

He is a NATABOC certified athletic trainer, as well as holding additional certifications as a professional rescuer and in first aid.

He resides in Metuchen, NJ with his wife Kristin and daughters Eloise, Claire and Madeleine.



**Paul Grayner, ATC, Assistant Athletic Trainer**

Paul Grayner, who joined the NJIT staff as an assistant athletic trainer late in the 2008 calendar year, has a diverse background in athletic training, having served at the college and professional levels, as well as in a fitness center setting.

A graduate of Saint Leo College in Florida and holder of a master's degree from American University in Washington, DC, Grayner has served as both a head and assistant trainer in the past.

From the mid-1970s to the mid-1980s, he was a trainer in the minor league systems of the New York Yankees and New York Mets from 1977 to 1985 and in 1984 he was assistant trainer with the Mets. He later worked with the Long Island Knights professional basketball team.

At the collegiate level, he was head trainer at Division I Fairleigh Dickinson University in Teaneck, NJ from 1989 to 1998 and he earlier worked as an assistant trainer at Hofstra (1982-85) and Adelphi (1985) on Long Island before joining FDU as an assistant (1986-89).

In addition to his work in athletic training, Grayner is a financial services representative and a life insurance sales representative.

He resides in Dumont, NJ.



**Brittany Vorndran, ATC, Assistant Athletic Trainer**

Brittany Vorndran, who joined the NJIT staff as an assistant athletic trainer in the summer of 2012, earned her bachelor's degree, majoring in athletic training, from Bridgewater (MA) State University in 2010 and was the school's 2008-09

Athletic Training Student of the Year.

She earned her master's in Kinesiology at James Madison University in Harrisonburg, VA, in May 2012.

At James Madison, she worked with the cross country, track and field, tennis and cheerleading teams.

A resident of Millville, NJ, she has worked as a substitute teacher for the Millville Board of Education.



**Melissa Maskery, ATC,  
Assistant Athletic Trainer**

Melissa Maskery, who joined the NJIT staff as an assistant athletic trainer in the summer of 2013, earned her bachelor's degree, majoring in athletic training and minoring in strength and conditioning, from the

University of Delaware in 2011.

She earned her master's in athletic training at Temple University in May 2013.

As a graduate assistant, she worked in Philadelphia with several Division I teams at Drexel University and as an undergraduate, on the medical staff for Delaware's 2010 Division I Football Championship Series (formerly known as Division I-AA) national runner-up.

She has worked as a trainer at numerous summer camps and before coming to NJIT, she earned the 2013 Merit Award for Research in the College of Health Sciences & Social Work and was the recipient of Drexel University Dragon Award for Leadership.

She is married to Mark Mackey.



**Kyle Tuohy, ATC, Assistant  
Athletic Trainer**

Kyle Tuohy, a 2014 summa cum laude graduate of East Stroudsburg (PA) University, joined the NJIT athletic training staff in September 2014.

Tuohy, who will attend graduate school while working at NJIT, won multiple awards from his alma mater, including the David Carylton Athletic Training Outstanding Student Award in May 2014.

He had varied clinical internship experience starting in the Fall Semester 2012 and continuing through his senior year.

His internships included stints with the East Stroudsburg women's basketball team; Parkland High School and Pen Argyl High School, both in Pennsylvania; the Tennessee Smokies professional baseball team, Class AA minor league affiliate of the Chicago Cubs; and Lafayette College in Easton, PA, where he worked closely with the Leopards football team in season and also worked with athletes from all in-season sports in the Fall Semester.

He holds several profession-related certifications, including from the National Athletic Trainers Association.



**Louis Rizio, MD, Team  
Physician**

Dr. Rizio is a board certified orthopedic surgeon and is fellowship trained in the field of sports medicine. He is a graduate of Rutgers and after earning his medical degree from the UMDNJ/New Jersey Medical School (recently

reorganized and renamed Rutgers Biomedical and Health Sciences), Dr. Rizio completed his orthopaedic residency at Tufts University in Boston.



# Administration

He then completed a sports medicine fellowship at the University of Miami. During his fellowship, he was assistant team physician of the Miami Dolphins, University of Miami Hurricanes, and the Florida Marlins.

Dr. Rizio, who specializes in sports-related injuries, practices at the Sports Medicine and Orthopaedic Center in Livingston, NJ. Prior to starting his own practice, Dr Rizio was the Chief of Sports Medicine at the NJ Medical School from 2000-2005. He currently is a professional, college, and high school team physician.

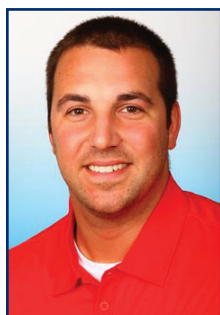
In 2013, Dr. Rizio was honored by the magazine New Jersey Monthly on its "Jersey Choice Top Doctors" list.

## Strength and Conditioning

There are many ways to make a team better and a vital path to improvement comes with the mantra "bigger, stronger, faster."

It's how teams get better from within by maximizing individual and team performance in competition. The Strength and Conditioning staff also works closely with the Athletic Training Staff in the areas of injury prevention and rehabilitation.

In the summer and fall of 2014, NJIT's Strength and Conditioning took new direction with the appointment of Bobby Fisk as Head Strength and Conditioning Coach and Drew Culp as Fisk's Assistant Coach.



**Bobby Fisk, Head Strength & Conditioning Coach**

Bobby Fisk, who was a basketball player in his own college days and coached the sport after college, comes to NJIT from Xavier University in Cincinnati, where he was assistant coach of strength and conditioning for

the entire Musketeers' program, which competes in the Big East Conference.

Fisk, a native of Schenectady, NY, spent over two years at Hobart and William Smith Colleges in Geneva, NY, where, as head strength and conditioning coach, he worked with successful teams, including women's soccer (William Smith College), which won the 2013 NCAA Division III National Championship; football (Hobart), which advanced to the 2012 Division III national quarterfinals and the regional finals in 2011 and 2013; and basketball, where Hobart reached the second round of the 2012 NCAA Tournament.

Moving to the Division I level with Xavier in 2013-14, Fisk worked with all 16 of the school's teams, with a primary assignment to women's basketball, men's and women's soccer, baseball, and men's and women's tennis.

He is a graduate of the State University of New York College at Oneonta (BS, Business Economics, 2008), Averett University of Danville, VA (MBA, 2010), and California University of Pennsylvania (MS in Exercise Science, Performance Enhancement & Injury Prevention, 2013)

As a student-athlete, Fisk was a men's basketball player at NCAA Division I UMBC in Baltimore for three years before transferring to Oneonta, where he was on the team for two years, serving as captain as a senior and earning All-State University of New York Athletic Conference honorable mention.

As a senior for Oneonta's Red Dragons, he finished 16th in the nation in Division III in 3-point shooting percentage (.441) and 22nd in 3-pointers made per game (3.2) as a senior at Oneonta.

After graduation from Oneonta, he entered coaching while pursuing his master's degree at Averett, serving that program as assistant men's basketball coach (two years) and head strength and conditioning coach (one year).

Having received his master's degree from

Averett in December 2010, he returned home to the Schenectady area and worked April 2011 to July 2011 as assistant strength and conditioning coach at nearby Siena College and with the minor professional basketball Albany Legends (head strength and conditioning coach).

Fisk holds multiple certifications and professional memberships.



### **Drew Culp, Assistant Strength & Conditioning**

NJIT's head strength and conditioning coach Bobby Fisk named Drew Culp to be his assistant coach in September 2014.

Culp, who earned his bachelor's degree from Penn State University in 2010 and his master's degree from

Penn State in 2012, most recently served as a volunteer assistant strength and conditioning coach at nearby Seton Hall prior to accepting his position with NJIT.

At Seton Hall, Culp worked with the school's Big East Conference men's and women's basketball teams, as well as with the men's soccer team.

Between college and coming to New Jersey, Culp worked at Velocity Sports Performance in Irvine, CA. He was a Sports Performance Coach and Assistant Sports Performance Director. Specifically, he was the Head Strength and Conditioning Coach for the El Toro High School football team and also assisted in training National Football League combine athletes. He also offered private training to athletes in a range of sports and age levels.

Drew Culp was a graduate assistant strength and conditioning coach at Penn State, working with the Nittany Lions football team for over a year through preseason 2012 and working with 11 Olympic Sports teams in his final semester.

He holds multiple certifications, including both strength and conditioning and first aid and CPR.

## **Academic Enrichment**



### **Sandra Taylor, Director of The Learning Center**

Sandra Taylor was appointed as Director of The Learning Center in late September 2014 after serving as Interim Director for the previous 16 months.

She joined NJIT in January 2010 as Academic Advisor for Student-

Athletes working in NJIT's Center for Academic and Personal Enrichment (CAPE), which has since been renamed as The Learning Center.

She mentored student-athletes in the areas of academic support, personal development, leadership, and community service. She was instrumental in bringing the Chi Alpha Sigma Honor Society for student-athletes to campus and has been individually certified from the N4A (National Association of Academic Advisors for Athletics) as an academic advisor for student-athletes.

In May 2013, she was elevated to Interim Director of CAPE and presided over its transition to the Learning Center in August of 2014. The Learning Center provides academic support to all students, mentoring and workshops, tutoring in areas outside of math and writing, and testing accommodations for students with disabilities. She has served on NJIT's Strategic Planning, Academic Advising, Retention and Persistence, Customer Service, Student Satisfaction, and Athletic Oversight Committees.

Prior to joining NJIT, Taylor spent 17 years as a key member of the Manhattan College Department of Athletics. She earned both her bachelor's degree in secondary education and her master's degree in special education from Manhattan College and is working on her doctorate in educational leadership at St. Mary's University in Winona, MN.

Working in the athletics department at Manhattan, a founding member of the Metro Atlantic Athletic Conference, Taylor was Associate Director of Athletics and Senior Woman Administrator, having filled those posts from 1996 until joining NJIT in 2010,



# Administration

For much of her time on the Manhattan staff (1995 to 2003), she was Chief Athletic Department Compliance Officer, with responsibility for Manhattan's adherence to NCAA Division I, MAAC and college regulations. She began her service at Manhattan as Athletic Department Ticket Manager, serving in that capacity from 1993 to 2003.

In her time at Manhattan, she served on numerous NCAA, conference and internal college committees, including service on the NCAA Division I Management Council from 2004 to 2007 and as chair of the NCAA Women's Lacrosse Committee from 2002 to 2006.

At the conference level, she chaired the MAAC Women's Basketball Committee from 1997 to 2009 and also served on four other sport committees, as well as on the MAAC Committee on Athletic Administration, with service as vice-chair in 2008-09.

Internally at Manhattan, her assignments included service on the Middle States Review in 2000 and on the NCAA Certification Committee.

Sandra and her husband, Ken, who is Associate Commissioner for Men's Basketball and Baseball at the MAAC, reside in Monroe Township, NJ, with their daughters, Katherine, who was born in May 2004, and Samantha, who was born in July 2009.



**Mike Spisto, Eligibility Certification Officer/Academic Advisor for Athletics**

Mike Spisto moved to administration as NJIT's Eligibility Certification Office/ Academic Adviser for Athletics in the Spring of 2013, working in the Center for Academic and Personal Enrichment (CAPE), now named

The Learning Center.

For the previous five years, he was the top assistant coach on the men's basketball staff, working with head coach Jim Engles in an association that culminated with the Highlanders capturing the 2013

regular season championship of the Great West Conference.

In addition to 14 years college coaching—five at NJIT—he served as Director of Athletics at the State University of New York at Delhi in the two years before he joined Engles' coaching staff with the Highlanders.

He had two stints as head coach at SUNY at Delhi sandwiched around three years as a Division I assistant with Rider and Albany (NY). He began his coaching career with two years as an assistant at his alma mater, Division III SUNY Oneonta.

At Delhi, which is also an alma mater, he was head coach from 1999 to 2001, left to become a Division I assistant and then returned for another two-year stint as head coach from 2004 to 2006 before becoming AD at Delhi.

His head coaching record in four years at SUNY Delhi was 86-31 and both stints included championships and coaching awards. His first Division I coaching assignment came at Rider University in 2001-02, where he worked alongside Jim Engles as an assistant when Rider captured its first-ever Metro Atlantic Athletic Conference regular season championship.

Heading to the University at Albany (NY), he helped recruit the team that would win back-to-back America East Conference championships.

Spisto's coaching career began at Oneonta State following his 1997 graduation. In addition to his bachelor's degree from Oneonta, he earned an associate's degree from SUNY Delhi, as well as an MSS from United States Sports Academy.

He played at both Delhi and Oneonta and was all-region twice at Delhi, where he is the career assists leader. At Oneonta he was captain as a senior after winning an ECAC title his junior year.

Mike and his wife, Katie-Lynn, reside in Staten Island, NY, with their young children: sons Michael (9) and Christopher (6), and daughter Alyssa (2).

# Remembering Joe Caiola



On June 29, 2014, NJIT athletics lost one of its top administrators, Assistant Director of Athletics Joe Caiola, who passed away unexpectedly at the age of 57 in Fort Myers, Florida.

As hard-working and vital a contributor as he was the department's day-to-day operation, more important to the many that knew him was the way Joe touched so many lives with his warm personality and kind spirit.

Born in Newark on February 16, 1957, Joe Caiola earned two degrees from NJIT, a Bachelor of Science, cum laude, with a major in engineering technology in 1980, and a Master of Science in Management in 1984. He previously earned an Associate in Applied Science in 1978 from Brookdale Community College (Lincroft, NJ) in 1978.

While he was an undergraduate at NJIT, Caiola was a two-year member of the men's basketball team. In his final college game on February 29, 1980, Joe exploded for a career-high 40 points against Concordia of New York. In addition to being Joe's personal career-best, that 40-point total is sixth on the all-time list for the Highlanders, who have fielded intercollegiate basketball teams since 1922.

Upon graduation from NJIT, Caiola embarked on a career in marketing and management in technical staff augmentation and contract engineering services. He held that position full-time for over a decade and later began working as a developer of single-family homes.

However, sports remained a passion for Joe and, along with his full-time work, he became a part-time coach in boys basketball in the mid-1990s.

Not long after, he returned to NJIT as an assistant men's basketball coach in 1997 and soon added responsibilities as an Assistant Director of Athletics. Having spent 17 years on the staff at NJIT, he was the longest-tenured employee of the department among administrators and coaches. At the time of his passing, Joe held the title of Assistant Athletics Director for Business, Facilities, and Events Management.

In addition to his work for NJIT, he was active in youth basketball and baseball in Edison, NJ, his hometown for the last 29 years of his life.

An avid bike rider who, on more than one occasion, rode from Edison to Newark and back, a round-trip of nearly 50 miles, Joe also continued to play recreational basketball in his 50s and played every year in the annual NJIT Alumni basketball games, which he helped organize. He played

throughout the most recent alumni game, held in February 2014.

Joe Caiola was a special person, universally well-liked among his NJIT co-workers and his friendliness and his kind spirit were evident almost immediately when he met new people.

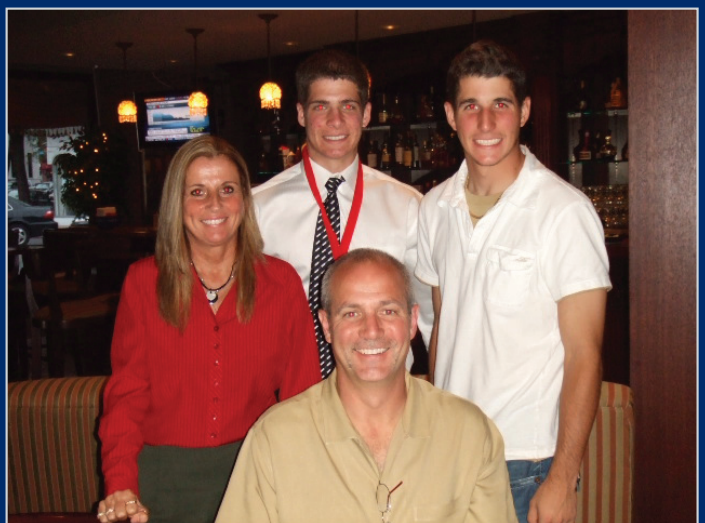
He enthusiastically took on new tasks on the job, no matter how difficult, and he was always the first to help others. Many a co-worker could tell personal stories of how Joe helped them in a time of need.

He worked especially closely with the Highlander baseball program and often traveled to the team's away games. He was the administrator-in-charge at several away Great West Conference baseball tournaments across the country and when NJIT hosted the 2013 Great West Conference Tournament, the last one for the GWC, he was Tournament Director, a post he also held when NJIT hosted previous baseball and soccer championship tournaments. Joe also accompanied other Highlander teams when they traveled to far away tournaments.

He is survived by his wife Carol and their two sons, Joe and Anthony. Both sons followed in their father's path, attending and graduating from NJIT. Joe, the elder of the Caiola brothers earned both bachelor's and master's degrees, while Anthony earned a bachelor's degree and played as member of the Highlanders baseball team for four years, completing his playing career in 2012.

His sons and their accomplishment were a special source of pride and joy for Joe. If you knew Joe well enough to speak to him regularly, you would hear news about all that his boys were doing as their lives progressed from high school all the way through college and entering the job market.

Joe is also survived by his parents, Nicholas and Filomena, and by his brother, Nicholas, Jr., in addition to numerous in-laws, nieces, nephews and cousins.





# Athletic Administration & Coaching Staff

## SENIOR ADMINISTRATION

Lenny Kaplan	Director of Athletics
Andrew Schwartz	Senior Associate Athletic Director
Alexis Schug	Associate Athletic Director/ Senior Women Administrator
Jayson Smikle	Assistant Athletic Director for Compliance
Tim Camp	Assistant Athletic Director for Sports Information
Mike Siegel	Faculty Athletic Representative
Brian Callahan	Senior Women Administrator Assistant Director of Physical Education

## ACADEMIC SUPPORT

Sandra Taylor	Director of The Learning Center; Academic Advisor
Mike Spisto	Athletics Eligibility Certification Officer/Academic Advisor for Athletics

## ATHLETIC TRAINING

Matt Koscs	Head Athletic Trainer
Paul Grayner	Assistant Athletic Trainer
Brittany Vorndran	Assistant Athletic Trainer
Melissa Mackey	Assistant Athletic Trainer
Kyle Tuohy	Assistant Athletic Trainer
Dr. Louis Rizio	Team Physician

## COMPLIANCE

Alexis Schug	Associate Athletic Director/ Senior Women Administrator
Jayson Smikle	Assistant Athletic Director for Compliance
Raquel Green	Compliance Coordinator

## DEVELOPMENT

Tim Paul	Assistant Development Director for Intercollegiate Athletics/Newark College of Engineering
----------	--

## FLEISHER ATHLETIC CENTER

Shannon Abraham	Operations Manager
Jonathan Walker	Front Desk
Danielle Dundas	Receptionist

## SPORTS INFORMATION

Tim Camp	Assistant Athletic Director for Sports Information
Stephanie Pillari	Assistant Sports Information Director
Courtney Caden	Assistant Sports Information Director

## STRENGTH AND CONDITIONING

Bobby Fisk	Head Strength and Conditioning Coach
Drew Culp	Assistant Strength and Conditioning Coach

## COACHING STAFF DIRECTORY

### BASEBALL

Brian Guiliana	Head Coach
Robbie McClellan	Assistant Coach
Grant Neary	Assistant Coach

### MEN'S BASKETBALL

Jim Engles	Head Coach
Brian Kennedy	Assistant Coach
Jesse Agel	Assistant Coach
Dino Presley	Assistant Coach
Jared Czech	Director of Basketball Operations

### WOMEN'S BASKETBALL

Steve Lanpher	Head Coach
Mark McCaleb	Assistant Coach
LaKea Jones	Assistant Coach
Epiphany Smith	Assistant Coach

### MEN'S & WOMEN'S CROSS COUNTRY

Al Alonso	Head Coach
John Crawford	Assistant Coach

### MEN'S AND WOMEN'S FENCING

Yefim Litvan	Head Coach
Jason Henderson	Assistant Coach
Henry Kennard	Assistant Coach
Danielle Henderson	Assistant Coach

### MEN'S SOCCER

Didier Orellana	Head Coach
David Janezic	Assistant Coach
Evan Brandsdorfer	Assistant Coach
Chris Condron	Volunteer Assistant

### WOMEN'S SOCCER

Mandi Risdien	Head Coach
Scott Waddell	Assistant Coach
Tim Verschuren	Volunteer Coach

### MEN'S SWIMMING & DIVING

Michael Lawson	Head Coach
Mark Albright	Assistant Coach
Shawn Bryan	Assistant Coach
Anthony Cacella	Volunteer Diving Coach

### MEN'S AND WOMEN'S TENNIS

Ira Miller	Head Coach
Livia Gherman	Assistant Coach

### MEN'S AND WOMEN'S TRACK AND FIELD (INDOOR & OUTDOOR)

Al Alonso	Head Coach
John Crawford	Assistant Coach
Robert Willmott	Volunteer Coach

### MEN'S VOLLEYBALL

Danny Goncalves	Head Coach
Brennon Dyer	Assistant Coach

### WOMEN'S VOLLEYBALL

Pete Volkert	Head Coach
Ariel Scott	Assistant Coach
Anthony Valbrun	Assistant Coach
Alicja Pawelec	Volunteer Coach

# NJIT & NCAA Division I



*Brian Sondergard*

**Beginning on September 1, 2009, the entire NJIT athletics program officially gained across-the-board active membership in NCAA Division I, completing a process that began officially in 2003.**

**NJIT, its teams and student-athletes enjoy the full benefits of Division I membership, including eligibility for Division I postseason championship competition and the inclusion of the Highlanders among the national Division I leaders in statistics maintained by the NCAA.**

Within months of NJIT's active Division I membership, the school won its first national Division I statistical championships, as women's volleyball players Sabrina Baby led the nation in digs per set and her teammates captured the team crown for digs, as well.

The NCAA's decision to make NJIT a full member of Division I completed a specific timetable that required NJIT and its Department of Athletics to meet a series of annual benchmarks before proceeding to the next step in the process.

NJIT, which competed in NCAA Division II beginning in 1997-98 and in NCAA Division III for more than two decades before that, made its first formal move toward Division I reclassification with men's soccer paving the way in 2003. That move grew out of November 2002 meetings among then-President Robert A. Altenkirch, then Vice President Joel Bloom (who would later succeed Altenkirch as NJIT's President) and Director of Athletics Lenny Kaplan. From there came a proposal for Dr. Altenkirch to the Board of Trustees, which unanimously approved in February 2003 a plan to reclassify men's soccer to Division I. Little more than two years later, the NCAA approved NJIT's proposal to begin advancing its entire program to Division I.

Men's soccer achieved active Division I status in 2005 and NJIT women's soccer became postseason-eligible in 2007. The remaining programs also began reclassifying in 2005, with active status taking longer for an entire athletics



# NJIT & NCAA Division I



*Stephan Halibej*

program than under the single-sport- per-gender track used for the two soccer programs.

In 2005-06 the lion's share of the competition for all but the men's soccer program came at the Division II level. In 2006-07, 2007-08, and 2008-09, NJIT's teams competed at the Division I level and fully complied with NCAA Division I rules, but were not eligible for championships at the top level.

Every facet of the program has been enhanced in the move to Division I with a special emphasis placed on student-athlete welfare. Facility upgrades have gone along with sports medicine staff expansion, a strength and conditioning program, and academic enrichment. NJIT has built a model NCAA Division I rules compliance regimen within its athletics program and across the entire university.

Further, the Board of Trustees embraced the transition to Division I as part of the University's strategic plan to enhance the quality of campus life for all students as NJIT makes the transition to being a residential university.

NJIT's teams have competed throughout the United States, taking on opponents from schools that are instantly recognizable for their stature in academics and athletics.

NJIT student-athletes have faced opponents every Ivy League institution, as well as the Patriot League, including Army and Navy, Buckell, Lafayette, and Lehigh.

The Highlanders have also competed against teams from every Division I conference with teams either in the Northeast or Mid-Atlantic States, including the America East, American Athletic, Atlantic 10, Big East, Colonial Athletic Association, Metro Atlantic Athletic, Mid-Eastern Athletic, and Northeast.

The eighth New Jersey-based institution in Division I, NJIT has competed against all seven of its home state peers, including Rutgers and Seton Hall.

In addition, Highlander teams have taken on squads from power conferences such as the ACC, Big Ten, Big 12, and Pac-12.

Two high-profile opponents, Maryland in men's soccer in 2005 and Penn State in men's volleyball in 2008, won national championships following the same regular seasons in which they faced NJIT.

NJIT joined its first Division I conference in 2009-10 when the Great West became an all-sports conference and women's tennis captured back-to-back league titles in 2011 and 2012. In 2012-13, the final year of the GWC, NJIT men's basketball was regular season champion and NJIT women's basketball was GWC Tournament champion.

Moving on from the Great West, NJIT women's tennis joined the America East Conference in 2013-14 and finished as conference runner-up in 2014, the Highlanders' first try at the AEC title. NJIT men's soccer began play as a member of the Sun Belt Conference in 2014, with the Sun Belt champion earning an automatic qualifying berth in the Division I College Cup field.



*Ed Charlton*

Also in 2013-14, NJIT men's swimming became one of three new members in the Coastal Collegiate Swimming Association (CCSA), a 15-member Division I association.



# Athletics Facilities

**The New Jersey Institute of Technology teams play home games and practice in a combination of facilities on campus and off.**

**The on-campus facilities include Lubetkin Field at Mal Simon Stadium for outdoor sports and the Estelle and Zoom Fleisher Athletic Center for indoor sports. In addition, NJIT in 2011 opened is the Naimoli Family Athletic and Recreational Facility, a multi-purpose indoor facility on the site of the former outdoor tennis courts.**

**Off-campus venues include Bears and Eagles Riverfront Stadium, a professional minor league stadium that is the home of NJIT baseball; the Prudential Center, home of the NHL Devils and NBA Nets, which has hosted selected NJIT basketball games; and, Branch Brook Park in Newark and Van Cortlandt Park in the Bronx, home sites for NJIT cross country. All except for Van Cortlandt Park are less than two miles from the NJIT campus.**

## Lubetkin Field at Mal Simon Stadium

The men's and women's soccer teams play their home games and practice on campus at Lubetkin Field at Mal Simon Stadium, a first-class venue for college soccer.

The field on the west end of NJIT's University Heights campus is an all-weather facility, with 24/7 availability for competition or practice. Outfitted with SprinTurf artificial grass in the summer of 2004, Lubetkin Field at Mal Simon Stadium also includes lighting for night contests, bleacher seating for more than 1,200 spectators, a press box and scoreboard.

The fully-enclosed facility, with its entrance a few feet opposite the entrance of the indoor Estelle and Zoom Fleisher Athletic Center, can take its place alongside any college soccer facility in the Northeast.

The home of Highlanders soccer served as the host site for the first-ever Great West Conference women's soccer championship tournament in November 2009. Previously, NJIT hosted the three-day 2005 ECAC Division II women's soccer championship tournament.

In the fall of 2005, when the Northeast was hit with record rainfall, games went on without a hitch at Lubetkin Field, thanks to the quality of the surface. Indeed, with the rain disrupting schedules around the region, some crucial Big East contests involving Seton Hall were moved to NJIT's home field. Those games, too, went off without a hitch.



*Lubetkin Field at Mal Simon Stadium*

## Estelle and Zoom Fleisher Athletic Center

The NJIT men's and women's basketball teams and men's and women's volleyball teams play their home games in the Fleisher Athletic Center gymnasium, while the swimming and diving team competes and practices in building's pool. The Fleisher Center also houses intercollegiate fencing, as well as all athletic department offices, varsity and general weight and fitness rooms, and the athletic training room.

In the summer of 2006, the gym underwent renovation to include installation of a new floor and baskets, new lighting, new sound system and new scoreboards, along with entirely new seating for approximately 1,500 spectators after the first phase of renovation. The back bay 'C gym' can be sectioned off from the main competition floor, making the facility useful for intramurals, physical education classes and campus recreation time, while being able to host multiple simultaneous events.

A six-lane swimming pool in Fleisher Athletic Center is home to the NJIT swimming team. Fencing has its own area on the second floor of the building.

In addition to all athletic department offices, the Fleisher Athletic Center also houses the sports medicine staff in the Athletic Training Room and the varsity weight room, supervised by the head strength and condition coach. The building's third floor is home to a fitness center, which is open for use by all students and staff.





# Athletics Facilities

## The Naimoli Family Athletic & Recreation Facility

Opened in 2011, the facility is approximately 25,600 square feet. The Naimoli Family Center will be a multi-purpose space for athletics, community recreation, and gatherings involving large numbers of people.

Built on top of the old outdoor tennis courts adjoining the Fleisher Athletic Center, construction of this new building has been made possible, in part, by a generous gift from Vincent Naimoli '62, Chairman and CEO of Anchor Industries International and Chairman Emeritus/Founder of the Tampa Bay Rays major league baseball team.

The facility houses courts for tennis and is available for other athletic and recreational activities, including practice for basketball and volleyball. It is heated and air conditioned, with flooring appropriate for the intended athletics and recreational activities.

Its indoor tennis courts offer vital year round practice and playing opportunities for NJIT's intercollegiate tennis teams, which have been consistently successful in the transition to Division I. In 2011, the women's tennis team became NJIT's first conference championship team in the Division I era.



*The Naimoli Family Athletic & Recreation Facility*

## Branch Brook Park and Van Cortlandt Park

A hallmark of the NJIT cross country program under veteran coach Al Alonso is its ability to host cross country competition that have made Highlander-sponsored races a popular destination for schools from throughout the New York/New Jersey area.

In 2009, NJIT hosted the Great West Conference championships at Van Cortlandt Park in the Bronx, and the course, which is home to some of the most prestigious events in the sport, is also the home venue for other annual NJIT-hosted races. Branch Brook Park, which is a public park of Essex County, reaches into several towns, including Newark, with the park entrance less than a mile from the NJIT campus.



*NJIT Athletics Weight Room at Estelle and Zoom Fleisher Athletic Center*

## Track Facilities

The NJIT men's and women's indoor track & field team trains at the Jersey City Armory which is home to a 6-lane indoor 200m track while the outdoor track & field team trains at the Nat Turner Park 6-lane outdoor 400m track.





## Prudential Center

In October 2007, the Prudential Center ushered in a new era in sports and entertainment in Newark and the entire northern New Jersey area.

Prudential Center is the cornerstone in the revitalization and renaissance of downtown Newark. In addition to the arena, Newark will soon add scores of condominiums, restaurants, themed bars and mixed retail establishments. Prudential Center, one of the finest arenas in the country, is New Jersey's home for hockey, basketball, concerts and numerous other events.

A public/private partnership between the City of Newark and Devils Arena Entertainment made the \$375 million Prudential Center a reality that is changing the face of downtown Newark and making it a destination place for sports and live entertainment in the region.

"The Rock" is located about a mile from NJIT's University Heights campus and is known best as the home of the National Hockey League New Jersey Devils and the former home of the National Basketball Association New Jersey Nets.

The arrival of the spectacular Prudential Center nearly coincided with NJIT's arrival as an NCAA Division I institution--the first in Newark and the newest in New Jersey in more than 20 years. The Rock opened one year after NJIT began Division I competition as part of its NCAA reclassification which is now complete.

In the arena's inaugural year, NJIT played host to six basketball games on four dates, including four men's basketball games and two women's games. Included was the first women's basketball game in the building's history, when the Highlanders entertained Cornell on January 15, 2008.

The Highlanders hosted additional basketball games in subsequent years and have played there each year of the building's existence. Further, NJIT's club ice hockey team plays all of its home games

in the full-size Devils practice rink facility (AmeriHealth Pavilion), which adjoins the main arena and has an 800-seat capacity. And one of the special events held in the main arena is NJIT's annual commencement.

# Athletics Facilities

## Bears and Eagles Riverfront Stadium: Home of the NJIT Highlanders

Joe Torre, then the manager of the New York Yankees, visited New Jersey Institute of Technology on December 8, 2005 to herald a new partnership between NJIT's baseball team, the Highlanders, and Newark professional baseball.

Torre was on hand as the Highlanders signed a 10-year contract to play their home games at Bears & Eagles Riverfront Stadium in Newark.

"I think this partnership is nothing but aces," Torre said during a press conference at NJIT. "It's a partnership between two class organizations that will make for nothing but a lot of fun for everyone."

For the previous two years, the Highlanders played their home games at the stadium. But the team's longer-term commitment to play at the stadium came as NJIT elevated its baseball program to Division I.

"NJIT is bringing Division I baseball to this great stadium," said NJIT President Robert A. Altenkirch, "which will generate the highest level of

excitement. It's a great partnership that allows NJIT to play intercollegiate baseball in a great facility, maybe the best for college baseball in the country."

Bears and Eagles Riverfront Stadium, the \$30 million state-of-the-art home of professional baseball in Newark, officially opened to the public on July 16, 1999.

With a seating capacity of 6,200 Bears and Eagles Riverfront Stadium affords everyone in attendance an up-close view of the action. The ballpark also has 20 luxury suites, a picnic area, a party deck, a concert stage situated behind the outfield wall and a major league-caliber press box featuring two radio booths and two television booths.

The name, Bears and Eagles Riverfront Stadium, honors Newark's rich baseball history. The original Bears were a farm team for the New York Yankees up until 1949 and the Eagles were a very successful Negro League team that played in Newark until 1950.

*Bears and Eagles Riverfront Stadium*





# About Newark



## Newark: The Renaissance City

NJIT is located in the heart of New Jersey's largest city, Newark, with a population of over 300,000, making it the 65th-largest city in the United States. A major urban center, Newark is a city on the move.

Attractions in Newark include:

- The Prudential Center, a major indoor entertainment and sports venue housing New Jersey Devils hockey and major concerts and other premier events
- New Jersey Performing Arts Center
- The Newark Museum
- The Newark Public Library
- Symphony Hall
- Branch Brook Park
- Art galleries, restaurants, shopping
- The Ironbound neighborhood, renowned for its dining and vibrant nightlife
- An urban architectural laboratory



## Newark: New Jersey's College Town

Some 30,000 undergraduate, graduate, and professional students attend classes in the University Heights section, which is home to NJIT, Rutgers-Newark, Rutgers Biomedical and Health Services, and Essex County College.

Adjacent to NJIT to the east, is the Newark campus of Rutgers University and the two schools enjoy an exceptionally close and productive relationship. NJIT and Rutgers students have library privileges at both campuses. NJIT students may also enrich their educational experience by enrolling in Rutgers-Newark courses and in full degree programs in disciplines not offered by NJIT, such as art, music, geology, and psychology.

Each year, the two universities co-sponsor a common season of theatrical productions, as well as 'World Week', a joint program of honors colloquia, and a variety of other cultural and social activities.

NJIT also enjoys a cooperative relationship with its neighbor to the west in the University Heights area, UMDNJ, with several joint degree programs.



## New Jersey/New York Metropolitan Region

NJIT and Newark are a part of a region that is a magnet not only to the rest of the United States, but also to the world.

In Newark and neighboring northern New Jersey alone, attractions such as the Prudential Center, New Jersey Performing Arts Center, Meadowlands Sports Complex, Red Bull Arena, Liberty Science Center, and numerous others are minutes away by car and in most cases accessible by public transportation. Literally dozens of shopping malls are within a 20-minute drive of Newark, as well.

Midtown Manhattan, with all that it and the rest of New York City offer, is less than 15 miles from the NJIT campus.

NJIT students have regular access to discount tickets for Broadway shows, museums, concerts, and sporting events.

The school also sponsors weekend trips throughout the northeastern United States, with activities such as skiing, boating, swimming, hiking, and more.

The spectacular Jersey shore is less than an hour away by car and winter sports are within a couple of hours drive to the west and north.



# Sports & Entertainment Around Newark

**NJIT, with its campus in Newark, NJ, sits in a region that abounds with major professional sports unlike any other in the United States and perhaps in the world. There are nine teams in the major professional leagues (MLB, NFL, NBA, and NHL) located in New York City, northern New Jersey and Long Island.**

**Only one of nine major teams is more than 25 miles from Newark, but most, including MetLife Stadium (Giants and Jets NFL football), Madison Square Garden (NBA Knicks, NHL Rangers), are much closer.**

**The three closest professional sports venues (listed below) are within three miles of NJIT's campus and can be accessed in a matter of minutes at low cost by public transportation, beginning with Newark Light Rail, from campus.**

## Prudential Center

The home of the National Hockey League New Jersey Devils is in downtown Newark at the corner of Mulberry and Edison streets, about one mile from the NJIT's University Heights campus.

Opened in October 2007, 'The Rock' is the centerpiece of the city's Downtown Core Redevelopment Project. In addition to NHL hockey, it has hosted numerous entertainment and sporting events, including NJIT basketball.

NJIT played basketball in the Rock in the inaugural year and in each year since. Indeed, NJIT hosted the first women's basketball game ever played in the Prudential Center on January 15, 2008 (NJIT vs. Cornell).

The arena, with full-capacity seating for 18,500 spectators, features a 4,800 square-foot exterior LED screen, as well as the latest in ice-surface technology and a gourmet restaurant overlooking the ice for Devils games. The building contains 850,000 square feet of space, 9,000 tons of steel, eight million pounds of structural steel and 25,000 cubic yards of concrete.



# Sports & Entertainment Around Newark



## Red Bull Arena

Located in Harrison, NJ, just across the Passaic River from Newark and less than three miles from the NJIT campus, the new home of the New York Red Bulls (opened in March 2010) sets the standard for soccer venues across North America.

The state-of-the-art soccer-specific facility is a major component of a multi-billion dollar development.

Red Bull Arena has a number of key design elements which give its seating bowl a close-to-the-action feeling and the unique stadium roof design extends from its leading edge over the entire seating bowl and then curve down to the concourse.

The overall seating capacity for soccer is 25,000, including 30 luxury suites (20 lower level and 10 upper level) and 1,116 club seats. Other amenities include three stadium clubs and two retail outlets.



## Bears and Eagles Riverfront Stadium

Bears and Eagles Riverfront Stadium, the \$30 million state-of-the-art home of professional baseball and, since 2004, the home of NJIT Highlanders baseball, officially opened to the public on July 16, 1999. With a seating capacity of 6,200, "The Den" affords fans an up-close view of the action. The ballpark also has 20 luxury suites, a picnic area, a party deck, a concert stage situated behind the outfield wall and a major league-caliber press box.

In December 2005, NJIT and the Bears held a joint press conference to herald a new partnership that includes a 10-year deal that extends Bears and Eagles Riverfront Stadium as the home of NJIT Highlanders baseball.

## Head Coach Brian Guiliana



Brian Guiliana, who has been the full-time assistant coach of the Highlanders since 2010, takes over leadership of the program from former head coach Mike Cole.

Guiliana has been involved in all phases of

the Division I program at NJIT, including scouting, recruiting and player development in team and individual practice sessions. On the field in games, he has served as third base coach and on the bench.

“Over the past two years, Brian has played a key role in turning around our baseball program,” said Kaplan in announcing Guiliana’s promotion to head coach. “I am excited to see him continue in his new role as our head coach.”

Guiliana’s two years on the coaching staff were the program’s two most successful seasons on the field since it began Division I competition in 2007.

The 2011 Highlanders won 20 games, up seven from the previous year, and a new program standard at

the Division I level. The 2012 team eclipsed that mark in a 25-27 overall finish that included a 16-12 record in the Great West Conference, which was good for a second-place tie in the regular season. The 2013 Highlanders won its second straight 20-game season, including senior Matt Weckerle ranking no lower than 46th and a high as fifth in eight NCAA Division I offensive categories.

Prior to joining the staff at NJIT in the fall of 2010, Guiliana was well known on the amateur baseball scene in New Jersey as a scout for the then-Florida Marlins, beginning in January 2006. In that role, he covered the entire state of New Jersey and assisted with the rest of the Northeast. As a scout, Guiliana fostered and maintained strong working relationships with high school and college coaches from throughout the state.

The resident of Rockaway, NJ, previously coached and gave private instruction since 1996 and was also active in summer baseball, organizing and managing teams in tournaments throughout the region and had players selected in the annual major league draft.

He is a graduate of The George Washington University in Washington, DC, where he was the recipient of both an academic and an athletic scholarship and was a captain of the GW baseball team, which he led in home runs as a senior.

Brian and his wife Sarah reside in Rockaway, NJ, with their daughters Angelina and Gianna.







## Assistant Coach Robbie McClellan



Robbie McClellan, a former professional pitcher who has built a successful college coaching career, is joining the baseball program at NJIT as an assistant coach, in August of 2012.

McClellan, who pitched in the minor leagues for three seasons after being drafted in the 12th round of the

2003 Major League Baseball June Amateur Draft by the Kansas City Royals, made a quick transition into college coaching when his playing career ended prematurely due to injury.

After retiring from playing in the summer of 2007, he joined the coaching staff at Chandler Gilbert Community College in Arizona that September and has been the program's pitching coach until signing on for the staff at NJIT, where he will fill a similar role. At Chandler Gilbert, a national-level two-year program, 27 of his pitching pupils have either moved on to NCAA Division I programs or to sign professional contracts.

"Coach McClellan is an experienced evaluator and tireless recruiter," head coach Guiliana stated. "Most importantly he has a proven track record of developing players. In five years of coaching in junior college and summer leagues, 27 players have signed professional contracts and over 35 have gone on to play at the Division I level. Coach McClellan will be a major part of the NJIT baseball teams' continued success."

McClellan, himself, pitched two years at Seward County Community College in his native Kansas before moving on to the top Division I program at Arizona State, where his teammates included current major league stars Dustin Pedroia (2007 American League Rookie of the Year and 2008 AL Most Valuable Player for the Red Sox) and Andre Ethier (two-time National League All-Star for the Dodgers).

McClellan was all-conference both of his years at Seward, ranking second in the nation in strikeouts per inning as a freshman (80 strikeouts in 51 innings). At Arizona State, he was a key part of the 2003 team that won 50 games, was ranked first in the nation at one point, advanced to the NCAA postseason Super Regional and ranked seventh in the final national poll, as he posted a 7-0 won-lost record. A year earlier, he was honorable mention all-Pac-10 Conference and earned Pac-10 and National Pitcher of the Week.

Drafted by the Royals, he won 14 games in two seasons in their organization before missing the 2005 season. Joining the independent minor league Traverse City club in Michigan in 2006, he won 12 more games before retiring in July 2007. His manager, Jon Cahill, said at the time: "Robbie has been a great competitor for us the past two seasons and is a first class individual on and off the field. I wish more players had the heart and soul for the game of baseball like he does."

In addition to his coaching at Chandler Gilbert Community College, McClellan served as pitching coach for teams in the famed Cape Cod Baseball League and in the Texas Collegiate League, two of the top summer circuits for college players. In three years on the summer scene, he coached 35 players who were drafted by major league baseball.

He is a 2011 graduate of Northern Arizona University.

## Assistant Coach Grant Neary



Grant Neary joined the NJIT baseball coaching staff in September 2012 as an assistant under first-year head coach Brian Guiliana.

Prior to Neary's arrival at NJIT, he served as the Assistant Baseball coach at Bloomfield College, an NCAA Division II school. In 2012, Bloomfield advanced to the Quarterfinal of the Central Atlantic College

Conference Tournament (CACC) and finished with a 22-21 overall record. Six players on the 2012 squad earned all-Conference honors, two garnered all-Region honors and two were Rawlings Gold Glove Award recipients under Neary's watch.

Neary served as the Associate Head Baseball Coach, Head Baseball Coach, Assistant Athletic Director and Head Strength and Conditioning coach at the City College of New York from 2009-2011.

In 2010 and 2011, Neary led CCNY to the Quarterfinal Round of the CUNY Conference Playoffs. He coached 12 players to All-Conference honors and one National Strength and Conditioning All-American during his time at CCNY.

Before Neary's time at CCNY, he served as the Chief Operating Officer of Power Hitter Sports Performance

LLC from 2006 to 2009. Prior to the opening of his business, he was an Assistant Baseball Coach at Watchung Hills Regional High School from 2005 to 2006.

He helped guide the 2005 Watchung Hills squad to a State Championship and led the Watchung Hills American Legion program to its first playoff berth in over a decade in the summer of 2006.

Neary began his coaching career as an Assistant Strength and Conditioning Coach at Stevens Institute of Technology from 2001-2003. He was a first-team all-State baseball player at Bridgewater-Raritan High School and went on to become a two-sport athlete during his college years. Coach Neary won both a National and a World Championship in Powerlifting. His college baseball career ended prematurely due to reoccurring shoulder injuries.

Currently, Neary is a baseball instructor at the Demarini Top 96 College Recruiting Camp and was the head coach of the Freehold Clippers (ABCCL) in the summer of 2012 with a roster consisting of numerous Division I players from the Atlantic 10 and Big East Conferences and two athletes that competed in the 2012 Division II College World Series.

He is a graduate of Kean University with a degree in Physical Education/Adult Fitness and earned his Master's Degree in Exercise Science and Sport Studies from California University of Pennsylvania. Additionally, he has completed 15 credits toward a Master of Arts in teaching degree from New Jersey City University.

He resides in Rockaway with his wife, Kim, daughter, Finley and son, Jack.



## Volunteer Assistant Coach Craig Anderson



Craig Anderson joined the NJIT baseball coaching staff in September 2014 as a volunteer assistant under third-year head coach Brian Guiliana.

Prior to coming to NJIT, Anderson spent the past two seasons coaching High School baseball at Passaic Valley High School in Little Falls, NJ. While coaching at Passaic Valley, Anderson

was in charge of the pitching staff that showed dramatic improvement in two years. The pitching staff went from an ERA over 8.50 in 2012, to an ERA of 4.14 in 2013. The following season Passaic Valley's pitching staff

dropped their ERA down to a 3.91 in the regular season of 2014.

Anderson was the head pitching instructor at Frozen Ropes in Pine Brook, NJ, where he also helped with the training of two professional pitchers (Luis Garcia, Philadelphia Phillies-Triple A-Major League/ Yoel Espinal, NY Yankees), before starting at NJIT.

Before arriving at Passaic Valley as a coach, Anderson played at Passaic Valley, where he earned first- team all-conference, all-county, and all-group selections.

Anderson, who was highly recruited out of high school, decided to play for Marty Kilgore at Maple Woods JUCO in Kansas City, Missouri. Anderson's college playing career was short lived due to multiple elbow surgeries.

Following his time at Maple Woods, Anderson graduated with a bachelor's degree in Physical Education from Montclair State.

# 2015 Roster

NO.	NAME	YR.	HT.	WT.	POS.	B/T	HOMETOWN/HIGH SCHOOL
1	Rex MacMillan	So.	5-8	155	UTL	R/R	Rutherford, NJ/Rutherford
2	Jesse Uttendorfer	Fr.	5-9	165	OF	L/L	Kingston, NY/Kingston
3	Cody Kramer	So.	5-11	165	C	R/R	Northampton, PA/Northampton
4	Evan Pietronico	Fr.	5-9	175	OF	L/L	Matawan, NJ/St. John Vianney
5	Mike Rampone	Sr.	5-10	190	SS/2B	R/R	Mendham, NJ/Randolph
7	Bryan Haberstroh	So.	5-10	185	2B/SS	R/R	Columbia, PA/Lancaster Catholic
10	Matt McKinnon	Fr.	5-10	165	OF	R/R	Blue Point, NY/Bayport-Blue Point
11	Ian Bentley	Jr.	5-11	170	LHP	L/L	Lancaster, PA/Lancaster Catholic
13	Matt Stalter	Fr.	5-8	175	SS	R/R	Flemington, NJ/Hunterdon Central
14	Brady Hall	Fr.	6-0	180	C	R/R	Waterloo, Canada/Waterloo Collegiate Institute
15	Ed Charlton	Sr.	6-0	195	CF	R/R	Egg Harbor Township/St. Augustine Prep (Richland, NJ)
16	Brent Jones	Fr.	6-4	190	RHP	R/R	Woodstock, GA/Etowah
17	Sean Lubreski	Fr.	6-0	185	RHP	R/R	North Plainfield, NJ/Blair Academy
19	John Gallo	Fr.	6-5	175	RHP	R/R	Melville, NY/Half Hallow Hills East
20	Johnny Malatesta	Fr.	5-11	150	IF/RHP	L/R	Vineland, NJ/Vineland
21	James Sofield	Fr.	6-5	185	RHP	R/R	Jackson, NJ/Jackson Liberty
22	Brian Sondergard	So.	6-3	185	LHP	L/L	West Milford, NJ/West Milford
24	Brandon Pilovsky	Fr.	5-11	170	RHP	R/R	Bayonne, NJ/Hudson Catholic
25	Stephan Halibej	Jr.	6-1	200	C/DH	R/R	Whippany, NJ/Seton Hall Prep
26	Manuel Gonzalez	Fr.	5-11	160	C	R/R	Edison, NJ/Edison
27	Tommy Derer	Fr.	6-1	170	INF	R/S	Philadelphia, PA/Archbishop Ryan
28	Edgar Badaraco	Fr.	6-0	220	C	R/R	Miramar, FL/North Broward Prep
29	Matt Yuhas	Fr.	5-8	165	OF	R/R	Martinsville, NJ Immaculata HS
33	Andres Fernandez	Fr.	6-0	190	RHP	R/R	Leonia, NJ/Leonia
34	Tyler Kapp	Sr.	6-7	200	1B/OF	L/L	Toms River, NJ/Toms River South
36	Joe Fasano	Sr.	6-3	220	RHP	R/R	Smithtown, NY/Smithtown
37	John Saviano	Fr.	6-1	230	RHP	R/R	Sloatsburg, NY/Suffern
55	Justin Chin	Fr.	6-0	195	LHP	L/L	Manalapan, NJ/St. John Vianney

## 2014 Statistics

Record: 20-25 • Home: 8-8 • Away: 11-15 • Neutral: 1-2 • Conference: 0-0

Player	avg	gp-gs	ab	r	h	2b	3b	hr	rbi	tb	slg%	bb	hbp	so	gdp	ob%	sf	sh	sb-att	po	a	e	fld%
WECKERLE, Matt	.318	43-43	151	41	48	8	4	8	27	88	.583	10	20	7	2	.429	1	2	24-24	87	6	1	.989
RAMPONE, Mike	.314	45-45	156	27	49	15	0	3	24	73	.468	27	3	25	4	.418	3	2	7-8	52	52	16	.867
ROCHE, DJ	.306	27-22	85	7	26	7	2	2	22	43	.506	8	1	18	1	.368	1	0	0-0	29	24	2	.964
KRAMER, Cody	.304	16-13	46	8	14	4	0	0	3	18	.391	5	2	5	1	.396	0	0	2-3	94	10	1	.990
CHARLTON, Ed	.275	40-40	142	23	39	8	0	4	34	59	.415	18	3	32	0	.364	2	0	3-3	104	0	4	.963
BICKERT, Teddy	.272	43-43	169	34	46	3	0	3	14	58	.343	14	3	20	0	.337	1	1	0-1	62	1	3	.955
HALIBEJ, Stephan	.268	24-24	82	4	22	5	0	1	13	30	.366	5	2	11	2	.315	3	2	0-0	0	0	0	.000
BROSMAN, Scott	.262	28-27	84	10	22	3	0	2	10	31	.369	9	8	13	3	.382	1	0	0-0	169	18	3	.984
HABERSTROH, Bryan	.236	45-45	157	21	37	11	0	0	5	48	.306	11	1	33	1	.290	0	4	1-4	66	93	19	.893
UTTENDORFER, Jesse	.231	6-6	26	6	6	1	0	0	5	7	.269	1	0	7	2	.259	0	0	1-2	14	0	1	.933
BOUCK, Tom	.208	42-42	144	16	30	7	0	5	17	52	.361	17	6	34	2	.314	2	0	0-0	283	13	3	.990
SWIM, Nick	.179	8-8	28	7	5	0	0	0	1	5	.179	9	0	8	2	.378	0	0	0-0	4	18	4	.846
MACMILLAN, Rex	.171	40-39	123	11	21	4	0	0	13	25	.203	9	2	29	3	.235	2	4	1-2	62	92	4	.975
RENNA, Zack	.167	9-8	24	1	4	0	0	0	2	4	.167	5	1	8	1	.333	0	0	0-0	33	7	0	1.000
EMMETT, Zach	.000	4-0	0	1	0	0	0	0	0	0	.000	0	0	0	0	.000	0	0	0-0	0	0	0	.000
Totals	.260	45-45	1417	217	369	76	6	28	190	541	.382	148	52	250	24	.348	16	15	39-47	1071	390	69	.955
Opponents	.271	45-45	1400	249	380	50	6	12	221	478	.341	215	36	294	23	.378	17	22	66-82	1089	387	62	.960

LOB - Team (342), Opp (370). DPs turned - Team (32), Opp (35). IBB - Team (4), RAMPONE 1, CHARLTON 1, ROCHE 1, BROSMAN 1, Opp (4). Picked off - CHARLTON 1, RENNA 1, HABERSTROH 1, WECKERLE 1.

Player	era	w-l	app-gs	cg	sho	sv	ip	h	r	er	bb	so	2b	3b	hr	ab	b/avg	wp	hbp	bk	sfa	sha
KAPP, Tyler	2.67	3-3	18-0	0	0/0	1	27.0	22	12	8	14	20	2	0	2	97	.227	2	3	0	2	2
BENTLEY, Ian	3.24	6-3	16-8	3	1/0	2	72.1	71	37	26	19	43	10	0	4	280	.254	3	4	0	3	4
ROCHE, DJ	3.97	4-2	12-12	4	2/0	0	68.0	51	42	30	69	85	4	2	3	250	.204	12	3	0	0	3
DANIELE, Alex	4.20	4-4	11-11	1	0/0	0	60.0	56	34	28	28	66	9	1	1	223	.251	6	5	3	5	5
COUGHLIN, Matt	5.73	2-5	10-10	2	0/0	0	55.0	78	45	35	26	32	7	0	0	238	.328	6	6	0	1	3
YANEZ, Jake	6.14	0-2	9-2	0	0/0	0	22.0	27	15	15	23	14	5	0	1	88	.307	4	3	0	0	1
MCAULIFFE, Austin	7.23	1-3	14-1	0	0/0	0	18.2	30	20	15	15	16	4	1	0	84	.357	4	3	0	1	2
SONDERGARD, Brian	9.00	0-1	12-0	0	0/0	0	18.0	30	22	18	6	10	5	1	0	80	.375	1	5	1	3	2
SHIVERS, Frank	9.00	0-0	6-0	0	0/0	0	9.0	12	9	9	3	3	3	1	0	38	.316	0	4	0	0	0
GERAGHTY, Pat	11.57	0-2	5-1	0	0/0	0	7.0	3	13	9	12	5	1	0	1	22	.136	2	0	0	2	0
Totals	4.87	20-25	45-45	10	3/0	3	357.0	380	249	193	215	294	50	6	12	1400	.271	40	36	4	17	22
Opponents	4.09	25-20	45-45	5	1/1	6	363.0	369	217	165	148	250	76	6	28	1417	.260	31	52	4	16	15

PB - Team (9), BROSMAN 7, RENNA 2, Opp (10). Pickoffs - Team (9), ROCHE 5, BENTLEY 2, DANIELE 1, KAPP 1, Opp (4). SBA/ATT - BROSMAN (38-44), ROCHE (16-20), KRAMER (12-19), DANIELE (16-19), RENNA (16-16), BENTLEY (11-14), COUGHLIN (9-12), SONDERGARD (4-5), YANEZ (4-4), MCAULIFFE (2-4), KAPP (2-2), SHIVERS (2-2).



Player	c	po	a	e	fld%	dp	sba	csb	sba%	pb	ci
RENNA, Zack	40	33	7	0	1.000	0	16	0	1.000	2	0
BENTLEY, Ian	14	2	12	0	1.000	1	11	3	.786	0	0
SONDERGARD, Brian	6	2	4	0	1.000	0	4	1	.800	0	0
KRAMER, Cody	105	94	10	1	.990	2	12	7	.632	0	0
BOUCK, Tom	299	283	13	3	.990	29	0	0	---	0	0
WECKERLE, Matt	94	87	6	1	.989	0	0	0	---	0	0
BROSMAN, Scott	190	169	18	3	.984	1	38	6	.864	7	0
MACMILLAN, Rex	158	62	92	4	.975	17	0	0	---	0	0
ROCHE, DJ	55	29	24	2	.964	2	16	4	.800	0	0
CHARLTON, Ed	108	104	0	4	.963	0	0	0	---	0	0
BICKERT, Teddy	66	62	1	3	.955	0	0	0	---	0	0
KAPP, Tyler	19	4	14	1	.947	0	2	0	1.000	0	0
UTTENDORFER, Jesse	15	14	0	1	.933	0	0	0	---	0	0
HABERSTROH, Bryan	178	66	93	19	.893	22	0	0	---	0	0
COUGHLIN, Matt	9	2	6	1	.889	0	9	3	.750	0	0
YANEZ, Jake	8	2	5	1	.875	1	4	0	1.000	0	0
RAMPONE, Mike	120	52	52	16	.867	8	0	0	---	0	0
SWIM, Nick	26	4	18	4	.846	1	0	0	---	0	0
MCAULIFFE, Austin	5	0	4	1	.800	0	2	2	.500	0	0
DANIELE, Alex	14	0	11	3	.786	0	16	3	.842	0	0
GERAGHTY, Pat	1	0	0	1	.000	0	0	0	---	0	0
HALIBEJ, Stephan	0	0	0	0	.000	0	0	0	---	0	0
SHIVERS, Frank	0	0	0	0	.000	0	2	0	1.000	0	0
EMMETT, Zach	0	0	0	0	.000	0	0	0	---	0	0
Totals	1530	1071	390	69	.955	32	66	16	.805	9	0
Opponents	1538	1089	387	62	.960	35	39	8	.830	10	0

# Program History

Year	Record	Conference	Postseason	Head Coach	Captains	MVP
1949				Edward F. Johnson		
1950	6-5			Edward F. Johnson		
1951	7-8			Edward F. Johnson	Charles Field	
1952	1-10			Edward F. Johnson		
1953				Edward F. Johnson	Charlie Sweet	
1954	17 G			Edward F. Johnson	Jack Lyons	
1955	9 G			Joseph Fitzgerald		
1956				Joseph Fitzgerald	Tony Di Vona, Doug Myrah	
1957	5-6			Joseph Fitzgerald		
1958	3-9					
1959	3-5			Paul C. Hausser	Marty Beyer, Ed Moran	
1960				Paul C. Hausser		
1961				Paul C. Hausser		
1962	4-5			Paul C. Hausser		
1963				Paul C. Hausser		
1964	2-6			Paul C. Hausser		
1965	4-6			Paul C. Hausser		Dan Carroll
1966	3-6			Paul C. Hausser	John Walsh	Doug Munson
1967	3-6			Paul C. Hausser	Jim McDonald, Dave Robinson	Dave Robinson
1968	3-8			Paul C. Hausser	Dick Church, Steve Scgieni	Joseph Kavalus
1969	1-6			Paul C. Hausser	Joseph Kavalus	Curt Koeppen
1970	1-10			Paul C. Hausser	Joseph Kavalus	Curt Koeppen
1971	5-10			Paul C. Hausser		Steve Montague
1972	1-9			Paul C. Hausser		Tom Molloy
1973	9-11-1			Gene Schmid		John Fumosa
1974	14-8	IAC		Gene Schmid		Bob Hill
1975^	10-9	1		Gene Schmid		George Olson
1976	18-8	1		Gene Schmid		Carmine DeNicola
1977	19-8	1		Gene Schmid		George Olson
1978	18-11	1		Gene Schmid		Nicholas J. Kaminsky
1979	12-11	1		Gene Schmid		Robert Ahart
1980	16-12			Gene Schmid		Ed Pritzlaff
1981	20-11			Gene Schmid		Jim Tensfeldt
1982	20-6	1	ECAC Champion	Gene Schmid		Jim Tensfeldt
1983	14-13	1	ECAC	Gene Schmid		Jim Tensfeldt
1984	14-13	1	ECAC Final	Gene Schmid		Dan MacDonald
1985	15-15	1	ECAC	Gene Schmid	Steve Sofman, Frank Testa, Jim Mavrakes	
						Thurman Van Riper
1986	12-15	2		Gene Schmid		Jim Mavrakes
1987	15-17-1			Gene Schmid	Tom Spadafino	Michael Sifonios
1988	15-15-1		ECAC Final	Gene Schmid		Jeff McEntee
1989	19-14	1	ECAC	Gene Schmid	Jeff McEntee, Keith Hook, Mike Sifonios	
						Paul Sarlo

Year	Record	Conference	Postseason	Head Coach	Captains	MVP
1990	20-14		ECAC Semis	Gene Schmid	Paul Baboulis, Paul Sarlo	Stephen Galoppo
1991	20-17		Skyline	Gene Schmid	Paul Baboulis, Paul Sarlo	Paul Baboulis
1992	14-12		4	Gene Schmid		Chris Sarnowski
1993	16-16			Gene Schmid	Steve Tice, Steve Galoppo	Steve Tice
1994	11-18	2	1	Gene Schmid		John Czepiel
1995	21-12		3	Gene Schmid		Ron Dollard
1996	16-13			Gene Schmid		Rich Johnson
1997	15-17		NYCAC	Gene Schmid		Eric Bliss
1998#	1-33		9	Jim McDermott		John Biondo
1999	11-25		8	David Sawicki	John Biondo, Jeff Sonnema, Shawn Steffens	
Jeff Sonnema						
2000	4-34		9	David Sawicki	John Biondo, Chris Coleman	John Biondo
CACC						
2001	14-23		7	Brian Callahan	Chris Lyons, Rich Livolsi	Chris Schwartz
2002	14-26		6	Brian Callahan	Tommy Lemanowicz, Steven Kosinski	Tommy Lemanowicz
2003	11-23		5*	Brian Callahan	Steven Kosinski, Dan Raczynski	Chris Schwartz
2004	23-24	2*	ECAC	Brian Callahan	Steven Kosinski, Dan Raczynski, Chris Schwartz	
Chris Schwartz						
2005	22-22	1*	ECAC	Brian Callahan	Anthony D'Agosta, Dan Lupo, Phil Resciniti	
Phil Resciniti						
2006	27-17	4	ECAC Champs DI Independent	Brian Callahan	Anthony D'Agosta, Rob Forbes	Jeff Potter
2007 &	15-28		2-2 in Trn	Brian Callahan	Brian Ascolese, Austin DeRogatis, Derrick McCain	
Kwesi Mitchell						
2008	5-47		1-4 in Trn	Brian Callahan	Chris Cardone, Matt Schlitter, Tom Farina	
2009	4-33			Brian Callahan	PJ Saporito, Matt Melody, Tom Farina	
GWC						
2010	13-44		9-18	Brian Callahan	James D'Aloia, Matt Tomczyk, Kyle McCarthy	
2011	20-35		12-16 (0-2 in GWC Trn)	Mike Cole	James D'Aloia, Matt Tomczyk	
2012	25-27		16-12 (0-2 in GWC Trn)	Mike Cole	James D'Aloia, Bryan Bleakley	
2013	20-34		11-16 (1-2 GWC Trn)	Brian Guiliana	Tripp Davis, Mark Leiter, Jr., Ed Charlton	
2014	20-25		n/a	Brian Guiliana	Ed Charlton, DJ Roche	Matt Weckerle

10 Independent Athletic Conference championships

10 ECAC Tournament berths (7 in Division III; 3 in Division II)

1 Skyline Conference championship

2 ECAC Championships (1 in Division III; 1 in Division II)

^ First year NCAA Division III (1975)

& First year NCAA Division I

# First year NCAA Division II (1998)

\* CACC Tournament berth (2003 - 4th; 2004 - 2nd; 2005- 2nd)

*Note: The information on these pages is as complete as possible based on available information. Anyone with documentable corrections to these items should contact the Sports Information office at (973) 596-8324 or email [pillari@njit.edu](mailto:pillari@njit.edu)*



# School Records



Mike Rampone

## — OFFENSE —

### Games (career)

191	Matt Weckerle	2011-14
181	Teddy Bickert	2010-14
169	Mike Turner	2005-08
166	Matt Tomczyk	2008-11
164	Jeff Peterson	2010-13
158	DJ Roche	2010-14
157	Derrick McCain	2004-07
153	Craig Binkiewicz	2006-09
	Chris Schwartz	2001-04
<b>149</b>	<b>Mike Rampone</b>	<b>2012-pres.</b>
	<b>Ed Charlton</b>	<b>2012-pres.</b>
144	Rob Forbes	2003-06
140	Kwesi Mitchell	2003-07
	Steven Kosinski	2001-04
	Vincent Del Vecchio	2009-11

### Games (season)

56	Teddy Bickert	2010
55	Matt Tomczyk	2011
	Bryan Bleakley	2011
	DJ Roche	2011

	Jeff Peterson	2011	198	Mike Rampone	2013
	Tyler Kapp	2011	197	Ed Charlton	2012
	Matt Tomczyk	2010	189	Bryan Bleakley	2011
54	Teddy Bickert	2011	188	Bryan Bleakley	2010
	Bryan Bleakley	2010	187	Matt Tomczyk	2010
53	Mike Rampone	2013	186	Matt Petrone	2010
	Matt Weckerle	2011	185	Tom Bouck	2012
	Vincent DelVecchio	2011	180	Ed Charlton	2013
50	Miguel Lugo	2008	178	Stephan Halibej	2013
	Stephan Halibej	2013	177	Bryan Bleakley	2012
48	Mike Turner	2008	176	Vincent DelVecchio	2011
47	Dom Hayes	2008	175	Miguel Lugo	2008
	Matt Schlitter	2008			
46	Chris Legiadre	2004			

### Batting Average (career/min 250 AB)

.384	Jim Tensfeldt (139-362)	1980-83
.370	Paul Sarlo (117-316)	1989-91
.361	Frank Testa (122-338)	1982-85

### Batting Average (season) (min 2.5 AB/gm, 75% of team's games)

.500	Paul Sarlo (51-102)	1989
.434	Nick Kaminsky	1978
.427	Craig Binkiewicz	2006

### At-Bats (Career)

717	Matt Weckerle	2011-14
677	Teddy Bickert	2010-14
<b>604</b>	<b>Mike Rampone</b>	<b>2012-pres.</b>
569	Chris Schwartz	2001-04
<b>567</b>	<b>Ed Charlton</b>	<b>2012-pres.</b>
564	Mike Turner	2005-08
556	Matt Tomczyk	2008-11
550	Jeff Peterson	2010-13
531	Derrick McCain	2004-07
516	Craig Binkiewicz	2006-09
471	Kwesi Mitchell	2003-07

### At-Bats (Season)

214	Matt Tomczyk	2011
210	Mike Rampone	2012
208	Matt Weckerle	2012
	Teddy Bickert	2011
205	Teddy Bickert	2010

### Runs Scored (Career)

126	Chris Schwartz	2001-04
	Derrick McCain	2004-07
109	Craig Binkiewicz	2006-09
105	Steven Kosinski	2001-04
	Kwesi Mitchell	2003-07

### Runs Scored (Season)

48	Justin Racz	2006
45	Mike Rampone	2012
43	Derrick McCain	2006
42	Kwesi Mitchell	2007
41	Matt Weckerle	2014
40	Matt Tomczyk	2011
39	Ed Charlton	2012
	Miguel Lugo	2008
38	Chris Schwartz	2002

### Hits (Career)

207	Matt Weckerle	2011-14
201	Chris Schwartz	2001-04
198	Teddy Bickert	2010-14
168	Kwesi Mitchell	2003-07
163	Dan Lupo	2002-05
160	Mike Turner	2005-08
154	Craig Binkiewicz	2006-09
	<b>Ed Charlton</b>	<b>2012-pres.</b>
147	Derrick McCain	2004-07
146	Matt Tomczyk	2008-11
139	Jim Tensfeldt	1980-83
138	Jeff Peterson	2010-13
133	DJ Roche	2010-14
122	Frank Testa	1982-85
117	Paul Sarlo	1989-91
116	Steven Kosinski	2001-04

### Hits (Season)

68	Matt Tomczyk	2011
66	Teddy Bickert	2010
65	Matt Weckerle	2012
62	Ed Charlton	2012
60	Bryan Bleakley	2010
59	Mike Rampone	2012
	Chris Schwartz	2004
56	Kwesi Mitchell	2007
	Craig Binkiewicz	2006
55	Jeff Peterson	2011
	Dan Lupo	2004
54	Mike Rampone	2013
	Bryan Bleakley	2011
	Matt Petrone	2010
	Chris Schwartz	2002
53	Ed Charlton	2013
52	Teddy Bickert	2011
51	Bryan Bleakley	2012
	Paul Sarlo	1989
	Derrick McCain	2006

### Doubles (Career)

42	Bryan Bleakley	2010-12
38	Chris Schwartz	2001-04
<b>36</b>	<b>Mike Rampone</b>	<b>2012-pres.</b>
34	DJ Roche	2010-14
33	Kwesi Mitchell	2003-07
	Matt Weckerle	2011-14

### Doubles (Season)

17	DJ Roche	2011
16	Bryan Bleakley	2012
	Bryan Bleakley	2010
	John Biondo	2000
15	Ed Charlton	2012
	Mike Rampone	2014
13	Vincent Del Vecchio	2010
	Jeff Potter	2006
12	Stephan Halibej	2013
	Matt Tomczyk	2011
	Tommy Lemanowicz	2001
	Cole Cicatelli	2000
11	Bryan Haberstroh	2014
	Teddy Bickert	2013
	Mike Rampone	2013
	Matt Schlitter	2008

### Triples (Career)

14	Chris Schwartz	2001-04
11	Matt Weckerle	2011-14
10	Paul Sarlo	1989-91
	Nick Kaminsky	1975-78

### Triples (Season)

7	Paul Sarlo	1990
	Nick Kaminsky	1978

### Homeruns (Career)

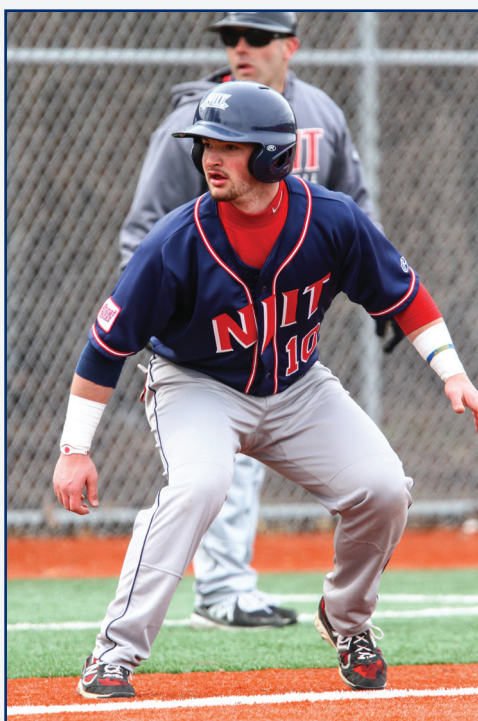
26	Chris Schwartz	2001-04
25	Jim Tensfeldt	1980-83
22	Bryan Bleakley	2009-12

### Homeruns (Season)

13	Kwesi Mitchell	2007
12	Jim Tensfeldt	1983
9	Bryan Bleakley	2012

### Runs Batted In (Career)

131	Chris Schwartz	2001-04
112	Mike Turner	2005-08
107	Matt Weckerle	2011-14
104	Kwesi Mitchell	2003-07
102	Jim Tensfeldt	1980-83
101	Frank Testa	1982-85



Bryan Haberstroh

### Runs Batted In (Season)

44	DJ Roche	2011
	Kwesi Mitchell	2007
42	Mike Turner	2006
41	Paul Sarlo	1991
	Paul Sarlo	1989
40	Austin DeRogatis	2006
39	Chris Schwartz	2001
	Jim Tensfeldt	1982

### Runs Batted In (Game)

9	Jeff Sonnema
---	--------------

### Total Bases (Career)

345	Chris Schwartz	2001-04
289	Bryan Bleakley	2009-12

### Total Bases (Season)

105	Kwesi Mitchell	2007
103	Chris Schwartz	2004
96	Bryan Bleakley	2012

### Walks (Career)

97	Derrick McCain	2004-07
85	Steven Kosinski	2001-04
84	Craig Binkiewicz	2006-09
83	Bryan Bleakley	2009-12
76	Matt Tomczyk	2008-11
68	Frank Papasidero	1974-76
67	Frank Testa	1982-85

### Walks (Season)

30	Derrick McCain	2007
	Chris Sarnowski	1990
	Steven Kosinski	2001
29	Craig Binkiewicz	2007
26	Matt Tomczyk	2011
	Bryan Bleakley	2011
	Steven Kosinski	2004

### Hit By Pitch (Career)

38	Matt Weckerle	2011-14
<b>25</b>	<b>Ed Charlton</b>	<b>2012-pres.</b>
18	Scott Mataya	1999-2002
17	Tommy Lemanowicz	1998, 2000-02
16	Steve Craig	2002-04
	Steven Kosinski	2001-04

# School Records

## Hit By Pitch (Season)

20	Matt Weckerle	2014
13	Ed Charlton	2013
11	Stephan Halibej	2013
	Nick Rabasco	2013
10	Matt Tomczyk	2011
	Tommy Lemanowicz	2002
9	Justin Racz	2006

## Sacrifice Bunts (Career)

13	Phil Pritzlaff	1979-82
----	----------------	---------

## Sacrifice Bunts (Season)

8	Matt Weckerle	2011
7	Teddy Bickert	2011
	Andy Kalwa	1988
	Dan MacDonald	1984
	Michael Smith	1981
	Frank Rafferty	1980

## Stolen Bases (Career)

74	Tom Spadifino	1985-88
	Phil Pritzlaff	1979-82
	Carmine DeNicola	1975-78

## Stolen Bases (Season)

26	Tom Spadifino	1985
25	Derrick McCain	2004

## — DEFENSE —

### Putouts (career)

840	Tom Bouck	2012-14
696	Bryan Bleakley	2009-12
660	Austin DeRogatis	2004-07
580	Frank Papsidero	1974-76

### Putouts (season)

363	Tyler Kapp	2011
362	Tom Bouck	2012
357	Bryan Bleakley	2011
349	Mike Turner	2008
290	Jeff Potter	2006
284	Austin DeRogatis	2006
283	Tom Bouck	2014
273	Teddy Bickert	2010
242	Phil Resciniti	2004



Rex MacMillan

### Assists (Career)

380	Vincent DelVecchio	2009-11
379	Justin Racz	2003-06
373	Ed Charlton	2012-pres.
349	Mike Rampone	2012-pres.
285	Steven Kosinski	2001-04
241	Miguel Lugo	2007-08

### Assists (Season)

158	Matt Tomczyk	2011
139	Matt Rampone	2013
	Vincent DelVecchio	2010
135	Vincent DelVecchio	2011
130	Matt Tomczyk	2010
133	Mike Rampone	2012
126	Miguel Lugo	2008
	Justin Racz	2006
115	Miguel Lugo	2007
106	Vincent DelVecchio	2009
	Dan MacDonald	1982

### Fielding Percentage (career) (min 400 chances)

.974	Jim Stoll (446-458)	1984-86
------	---------------------	---------

### Fielding Percentage (season) (min 100 chances)

1.000	Kwesi Mitchell	2007
	Erik Hansen	2002
	Robert Ahart	1979
	Robert Ahart	1977

## — PITCHING —

### Earned Run Average (career/min 120 IP)

1.54	George Olson	1974-77
------	--------------	---------

### Earned Run Average (season/min 40 IP)

0.92	Jeff Pruneau	1980
------	--------------	------

### Wins (career)

29	Dan MacDonald	1981-84
	George Olson	1974-77
	Chris Legiadre	2002-06

### Wins (season)

10	Dan MacDonald	1982
	George Olson	1977

### Appearances (career)

70	Cory Kuzmik	2005-08
67	Austin McAuliffe	2010-14
62	Matt Melody	2006-09
58	Tripp Davis	2010-13
	Mark Leiter, Jr.	2010-13
	DJ Roche	2010-14
53	Matt Melody	2007-09
48	Kyle Burdi	2010-13
49	PJ Saporito	2006-09
46	Spiro Molfetas	2007-08
45	Chris Parenti	2006-09
	Dan MacDonald	1981-84
	Chris Legiadre	2002-06

### Appearances (season)

27	Matt Melody	2008
25	DJ Roche	2010
26	Spiro Molfetas	2008
22	Vinny Tavaglione	2004
20	Five tied	

### Games Started (Career)

160	Matt Tomczyk	2008-11
138	Vincent DelVecchio	2008-11
58	Tripp Davis	2010-13
56	Mark Leiter, Jr.	2010-13
47	PJ Saporito	2006-09
45	Dan MacDonald	1981-84



41	Chris Legiadre	2002-06
39	Dan Raczynski	2001-04

#### Games Started (season)

15	Tripp Davis	2013
	Mark Leiter, Jr.	2013
	Tripp Davis	2011
	Dan MacDonald	1982
	George Olson	
14	Tripp Davis	2012
	Mark Leiter, Jr.	2012
	Tripp Davis	2010
	Mark Leiter, Jr.	2010
	PJ Saporito	2008
13	Mark Leiter	2011

#### Complete Games (career)

42	Dan MacDonald	1981-84
----	---------------	---------

#### Complete Games (season)

14	Dan MacDonald	1982
----	---------------	------

#### Shutouts (career)

5	Dan MacDonald	1981-84
	George Olson	1974-77

#### Shutouts (season)

3	Jim Schak	1974
---	-----------	------

#### Saves (career)

15	Corey Kuzmik	2005-08
7	Ian Bentley	2013-pres.
5	Austin McAuliffe	2010-14

#### Saves (season)

7	Cory Kuzmik	2007
6	Vinny Tavaglione	2004
5	Ian Bentley	2013
	Cory Kuzmik	2006

#### Innings Pitched (career)

382.2	Tripp Davis	2010-13
360.1	Mark Leiter, Jr.	2010-13
299	Dan MacDonald	1981-84
275.1	Chris Legiadre	2002-06
251.1	PJ Saporito	2006-09
228.2	Dan Raczynski	2001-04



Ian Bentley

#### Innings Pitched (season)

107.1	Tripp Davis	2011
103	George Olson	1977
98.1	Tripp Davis	2012
97.1	Tripp Davis	2013
94.2	Mark Leiter, Jr.	2013
93.2	Mark Leiter, Jr.	2012

#### Innings Pitched (game)

16	Andy Kalwa	1987
----	------------	------

#### Least Walks/9 IP, (season)

0.60	Chris Legiadre	2004
------	----------------	------

#### Strikeouts (career)

364	Mark Leiter, Jr.	2010-13
357	Dan MacDonald	1981-84
309	Tripp Davis	2010-13

#### Strikeouts (season)

106	Mark Leiter, Jr.	2013
105	Dan MacDonald	1983
103	Mark Leiter	2011

#### Strikeouts/9 IP (career)

10.75	Dan MacDonald	1981-84
-------	---------------	---------

#### Strikeouts/9 IP (season)

12.06	Dan MacDonald	1982
-------	---------------	------

### — TEAM RECORDS —

**Most Games:** 57, 2010

**Most Wins:** 27, 2006

**Highest Winning Pct.:** .769 (20-6), 1982

**Most Consecutive Wins:** 15, 1982

**Highest Batting Average:** .317, 2006

**Lowest ERA:** 2.88, 2009

**Highest Fielding Percentage:** .944, 2006

**Most Double Plays:** 51, 2010

**Most Triple Plays:** 1, 1983

**Home Runs:** 34, 2007

#### First Division I Win

2007 Game 5, vs. LIU, March 12, 2007  
(23-12; WP-PJ Saporito)

#### First Division I Home Run

Derrick McCain vs. St. Bonaventure, March 11, 2007

#### First Division I Complete Game Win

Brian Ascolese vs. Army, April 24, 2007  
(W, 2-0)

#### First Division I Complete Game Shutout

PJ Saporito vs. NYIT, May 4, 2007 (W, 2-0)

#### No-Hitters

Ron Brookman vs. Stevens, 19??  
Jeff Pruneau vs. Baruch, 1980

## School Records—Division I

## — OFFENSE —

## Games (career)

191	Matt Weckerle	2011-14
181	Teddy Bickert	2009-14
166	Matt Tomczyk	2008-11
164	Jeff Peterson	2010-13
161	Bryan Bleakley	2009-12
158	DJ Roche	2010-14
<b>149</b>	<b>Mike Rampone</b>	<b>2012-pres.</b>
<b>149</b>	<b>Ed Charlton</b>	<b>2012-pres.</b>
136	James D'Aloia	2008-12
136	Tom Bouck	2012-14
133	Anthony Caiola	2009-12
115	Craig Binkiewicz	2007-09
105	Jeff Pizzi	2009, 2010, 2012
91	Miguel Lugo	2006-08
88	Mike Turner	2007-08

## Games (season)

56	Teddy Bickert	2010
55	Matt Tomczyk	2011
	Bryan Bleakley	2011
	DJ Roche	2011
	Jeff Peterson	2011
	Tyler Kapp	2011
	Matt Tomczyk	2010
54	Teddy Bickert	2011
	Bryan Bleakley	2010
53	Mike Rampone	2013
	Vincent DelVecchio	2011
52	Ed Charlton	2012
	Matt Weckerle	2012
	Bryan Bleakley	2012
	Tom Bouck	2012
51	Mike Rampone	2012
50	Stephan Halibej	2013
	Matt Petrone	2010
	Miguel Lugo	2008

Batting Average  
(career/min 250 AB)

.299	Craig Binkiewicz (115/385)	2007-09
.292	Teddy Bickert (198/677)	2010-14
.291	DJ Roche (133/457)	2010-14
.289	Matt Weckerle (207/717)	2012-14
.287	Matt Schlitter (91/317)	2006-08
<b>.271</b>	<b>Mike Rampone (153/564)</b>	<b>2011-pres.</b>



Cody Kramer

<b>.266</b>	<b>Ed Charlton (138/519)</b>	<b>2012-pres.</b>
.262	Miguel Lugo (84/321)	2006-08

Batting Average, season  
(min 2.5 AB/gm, 75% of team's  
games)

.371	Kwesi Mitchell (56/151)	2007
.359	Tom Bouck (42/128)	2013
.329	DJ Roche (39/57)	2012
.322	Teddy Bickert (66/205)	2010
.319	Bryan Bleakley (60/188)	2010
.318	Matt Tomczyk (68/214)	2011
.316	Dom Hayes (49/155)	2008

## At-Bats (career)

717	Matt Weckerle	2011-14
677	Teddy Bickert	2010-14
<b>564</b>	<b>Mike Rampone</b>	<b>2012-pres.</b>
556	Matt Tomczyk	2008-11
554	Bryan Bleakley	2009-12
550	Jeff Peterson	2010-13
<b>519</b>	<b>Ed Charlton</b>	<b>2012-pres.</b>
457	DJ Roche	2010-14
	Tom Bouck	2012-14
385	Craig Binkiewicz	2007-09

321	Miguel Lugo	2006-08
317	Matt Schlitter	2006-08
312	Mike Turner	2006-08

## At-Bats (season)

214	Matt Tomczyk	2011
210	Mike Rampone	2012
	DJ Roche	2011
208	Matt Weckerle	2012
	Teddy Bickert	2011
206	Jeff Peterson	2011
204	Matt Weckerle	2011
198	Mike Rampone	2013
197	Ed Charlton	2012
189	Bryan Bleakley	2011
188	Bryan Bleakley	2010
187	Tyler Kapp	2011
	Matt Tomczyk	2010
185	Tom Bouck	2012
180	Ed Charlton	2013
178	Stephan Halibej	2013
177	Bryan Bleakley	2012
175	Miguel Lugo	2008
172	Vincent Del Vecchio	2010
170	Matt Schlitter	2008

## Runs Scored (career)

121	Matt Weckerle	2011-14
109	Teddy Bickert	2009-14
<b>101</b>	<b>Mike Rampone</b>	<b>2012-pres.</b>
<b>90</b>	<b>Ed Charlton</b>	<b>2012-pres.</b>
76	Matt Tomczyk	2008-11
75	Craig Binkiewicz	2007-09
71	Jeff Peterson	2010-13
70	Tom Bouck	2012-14
57	Miguel Lugo	2007-08
59	DJ Roche	2010-14
46	Matt Schlitter	2006-08
42	Anthony Caiola	2009-2012
	Kwesi Mitchell	2007

## Runs Scored (season)

45	Mike Rampone	2012
42	Kwesi Mitchell	2007
41	Matt Weckerle	2014
40	Matt Tomczyk	2011
39	Ed Charlton	2012

	Miguel Lugo	2008
36	Craig Binkiewicz	2007
35	Teddy Bickert	2011
34	Derrick McCain	2007
	Teddy Bickert	2014

### Hits (career)

207	Matt Weckerle	2011-14
198	Teddy Bickert	2010-14
179	Bryan Bleakley	2009-12
<b>162</b>	<b>Mike Rampone</b>	<b>2012-pres.</b>
<b>154</b>	<b>Ed Charlton</b>	<b>2012-pres.</b>
146	Matt Tomczyk	2008-11
138	Jeff Peterson	2010-13
133	DJ Roche	2011-14
121	Tom Bouck	2012-14
100	Vincent Del Vecchio	2009-11
98	Craig Binkiewicz	2007-09
91	Matt Schlitter	2006-08
84	Miguel Lugo	2006-08
78	Mike Turner	2006-08

### Hits (season)

68	Matt Tomczyk	2011
66	Teddy Bickert	2010
65	Matt Weckerle	2012
62	Ed Charlton	2012
60	Bryan Bleakley	2010
59	Mike Rampone	2012
58	Matt Weckerle	2011
	DJ Roche	2011
56	Kwesi Mitchell	2007
55	Jeff Peterson	2011
54	Mike Rampone	2013
	Bryan Bleakley	2011
	Matt Petrone	2010
53	Ed Charlton	2013
52	Teddy Bickert	2011
51	Bryan Bleakley	2012
50	Stephan Halibej	2013
	Miguel Lugo	2008

### Doubles (career)

42	Bryan Bleakley	2009-12
<b>36</b>	<b>Mike Rampone</b>	<b>2012-pres.</b>
34	DJ Roche	2011-14
33	Matt Weckerle	2011-14
<b>31</b>	<b>Ed Charlton</b>	<b>2012-pres.</b>

27	Jeff Peterson	2010-13
27	Tom Bouck	2012-14
28	Teddy Bickert	2010-14
21	Matt Schlitter	2006-08
20	Matt Tomczyk	2008-11
19	Vincent DelVecchio	2009-11
	John Berner	2008-10
15	James D'Aloia	2008-12
	Jeff Pizzi	2009, 2010, 2012
	Mike Turner	2006-08
	Miguel Lugo	2006-08
13	Craig Binkiewicz	2007-09

### Doubles (season)

17	DJ Roche	2011
16	Bryan Bleakley	2012
	Bryan Bleakley	2010
15	Ed Charlton	2012
15	Mike Rampone	2014
13	Vincent Del Vecchio	2010
12	Stephan Halibej	2013
	Matt Tomczyk	2011
11	Bryan Haberstroh	2014
	Teddy Bickert	2013
	Mike Rampone	2013
	Matt Schlitter	2008
10	Tom Bouck	2013
	DJ Roche	2012
	Matt Weckerle	2012
	Mike Rampone	2012
	Tom Bouck	2012
	Bryan Bleakley	2011
	Jeff Peterson	2011
	Kwesi Mitchell	2007
	Matt Schlitter	2007

### Triples (career)

15	Matt Weckerle	2011-14
<b>6</b>	<b>Ed Charlton</b>	<b>2012-pres.</b>
5	Matt Tomczyk	2008-11
5	DJ Roche	2011-14
4	Jeff Pizzi	2009, 2010, 2012
3	Matt Petrone	2010
	John Berner	2008-10
	Dom Hayes	2008

### Triples (season)

4	Matt Weckerle	2014
	Ed Charlton	2013
	Matt Weckerle	2011
3	Matt Weckerle	2012
	Matt Petrone	2010
	Dom Hayes	2008
2	DJ Roche	2014
	James D'Aloia	2012
	Matt Tomczyk	2010
	Jeff Pizzi	2009

### Homeruns (career)

22	Bryan Bleakley	2009-12
13	Kwesi Mitchell	2007
13	Tom Bouck	2012-14
9	Matt Tomczyk	2008-11
	<b>Ed Charlton</b>	<b>2012-pres.</b>
8	DJ Roche	2011-14
	<b>Mike Rampone</b>	<b>2012-pres.</b>
	John Berner	2008-10
6	Derrick McCain	2006-07
5	Mike Turner	2006-08

### Homeruns (season)

13	Kwesi Mitchell	2007
9	Bryan Bleakley	2012
8	Matt Weckerle	2014
6	Bryan Bleakley	2010
	Derrick McCain	2007

### Runs Batted In (career)

107	Matt Weckerle	2011-14
92	Bryan Bleakley	2009-12
91	DJ Roche	2011-14
<b>89</b>	<b>Ed Charlton</b>	<b>2012-pres.</b>
76	Jeff Peterson	2010-13
<b>74</b>	<b>Mike Rampone</b>	<b>2012-pres.</b>
71	Matt Tomczyk	2008-11
	Tom Bouck	2012-14
70	Teddy Bickert	2010-14
53	Matt Schlitter	2006-08
47	James D'Aloia	2008-12
46	Mike Turner	2006-08
44	John Berner	2008-10
	Kwesi Mitchell	2007



## School Records—Division I

**Runs Batted In (season)**

44	DJ Roche	2011
	Kwesi Mitchell	2007
36	Bryan Bleakley	2012
34	Matt Weckerle	2012
	Ed Charlton	2014
31	Ed Charlton	2012
30	Tom Bouck	2013
	Tom Bouck	2012
	Jeff Peterson	2011
	Derrick McCain	2007

**Runs Batted In (game)**

7	Kwesi Mitchell	2007
6	Derrick McCain	2007
5	Teddy Bickert	2013

**Total Bases (career)**

304	Matt Weckerle	2011-14
289	Bryan Bleakley	2009-12
248	Teddy Bickert	2010-14
<b>224</b>	<b>Ed Charlton</b>	<b>2012-pres.</b>
	<b>Mike Rampone</b>	<b>2012-pres.</b>
203	Matt Tomczyk	2008-11
201	DJ Roche	2011-14
184	Jeff Peterson	2010-13
128	Matt Schlitter	2006-08
113	Miguel Lugo	2006-08
108	Mike Turner	2006-08
105	Kwesi Mitchell	2007

**Total Bases (season)**

105	Kwesi Mitchell	2007
96	Bryan Bleakley	2012
94	Matt Tomczyk	2011
	Bryan Bleakley	2010
93	DJ Roche	2011
90	Matt Weckerle	2012
88	Matt Weckerle	2014
81	Mike Rampone	2012
80	Matt Weckerle	2011
79	Bryan Bleakley	2011
78	Ed Charlton	2013
77	Teddy Bickert	2010
73	Tom Bouck	2012
	Jeff Peterson	2011
	Mike Rampone	2014
71	Stephan Halibej	2013

70	Mike Rampone	2013
69	Miguel Lugo	2008
67	Matt Schlitter	2007

**Walks (career)**

83	Bryan Bleakley	2009-12
76	Matt Tomczyk	2008-11
<b>70</b>	<b>Mike Rampone</b>	<b>2012-pres.</b>
64	Jeff Peterson	2010-13
61	Craig Binkiewicz	2007-09
58	Matt Weckerle	2011-14
51	Vincent Del Vecchio	2009-11
<b>43</b>	<b>Ed Charlton</b>	<b>2012-pres.</b>
36	John Berner	2008-10

**Walks (season)**

30	Derrick McCain	2007
29	Craig Binkiewicz	2007
27	Matt Weckerle	2014
	Bryan Bleakley	2010
26	Matt Tomczyk	2011
	Bryan Bleakley	2011
25	Ricky Petrosino	2008

**Hit By Pitch (career)**

38	Matt Weckerle	2011-14
27	Bryan Bleakley	2009-12
<b>24</b>	<b>Ed Charlton</b>	<b>2012-pres.</b>
20	Tom Bouck	2012-14
17	Vincent Del Vecchio	2009-11
<b>15</b>	<b>Mike Rampone</b>	<b>2012-pres.</b>
14	Teddy Bickert	2010-14
<b>13</b>	<b>Stephan Halibej</b>	<b>2013-pres.</b>
11	Nick Rabasco	2013
9	Jeff Peterson	2010-13
7	Chris Cardone	2006-08
6	Nick Swim	2013-14
	Matt Schlitter	2006-08

**Hit By Pitch (season)**

20	Matt Weckerle	2014
14	Bryan Bleakley	2012
13	Ed Charlton	2013
11	Stephan Halibej	2013
11	Nick Rabasco	2013
9	Matt Weckerle	2012
8	Ed Charlton	2012
	Mike Rampone	2012
	Tom Bouck	2012
6	James D'Aloia	2010
	Vincent Del Vecchio	2009
	Tom Bouck	2014

**Sacrifice Bunts (career)**

6	Craig Binkiewicz	2007-09
---	------------------	---------

**Sacrifice Bunts (season)**

4	Craig Binkiewicz	2008
---	------------------	------

**Stolen Bases (career)**

38	Matt Weckerle	2011-14
<b>34</b>	<b>Ed Charlton</b>	<b>2012-pres.</b>
33	Craig Binkiewicz	2007-09
<b>18</b>	<b>Mike Rampone</b>	<b>2012-pres.</b>
17	Matt Petrone	2010
	Miguel Lugo	2006-08
14	Teddy Bickert	2010-14



Joe Fasano

### Stolen Bases (season)

24	Matt Weckerle	2014
17	Matt Petrone	2010
16	Ed Charlton	2013
	Craig Binkiewicz	2007
15	Ed Charlton	2012
13	Miguel Lugo	2008
12	Kwesi Mitchell	2007
11	Derrick McCain	2007

## — DEFENSE —

### Putouts (career)

840	Tom Bouck	2012-14
696	Bryan Bleakley	2009-12
506	Teddy Bickert	2010-14
<b>410</b>	<b>Tyler Kapp</b>	<b>2011-pres.</b>
401	Mike Turner	2006-08
380	Matt Tomczyk	2008-11
<b>373</b>	<b>Ed Charlton</b>	<b>2012-pres.</b>
335	Kyle McCarthy	2007-10
281	DJ Roche	2010-14
273	Jeff Peterson	2010-13
262	James D'Aloia	2008-12
246	Craig Binkiewicz	2007-09
240	Vincent DelVecchio	2009-11

### Putouts (season)

363	Tyler Kapp	2011
362	Tom Bouck	2012
357	Bryan Bleakley	2011
349	Mike Turner	2008
325	Bryan Bleakley	2012
283	Tom Bouck	2014
273	Teddy Bickert	2010
217	Bryan Bleakley	2010
195	Tom Bouck	2013
187	Scott Brosman	2013
184	DJ Roche	2011
181	Austin DeRogatis	2007
169	Scott Brosman	2014
157	Zack Renna	2013
155	Ed Charlton	2012
150	Kyle McCarthy	2009

### Assists (career)

380	Vincent Del Vecchio	2009-11
<b>324</b>	<b>Mike Rampone</b>	<b>2012-pres.</b>
363	Matt Tomczyk	2008-11
241	Jeff Peterson	2010-13
	Miguel Lugo	2006-08

### Assists (season)

158	Matt Tomczyk	2011
139	Mike Rampone	2013
	Vincent DelVecchio	2010
135	Vincent DelVecchio	2011
133	Mike Rampone	2012
130	Matt Tomczyk	2010
126	Miguel Lugo	2008

### Fielding Percentage (career) (min 400 chances)

### Fielding Percentage (season) (min 100 chances)

1.000	Kwesi Mitchell (80po/2a/0e)	2007
-------	-----------------------------	------

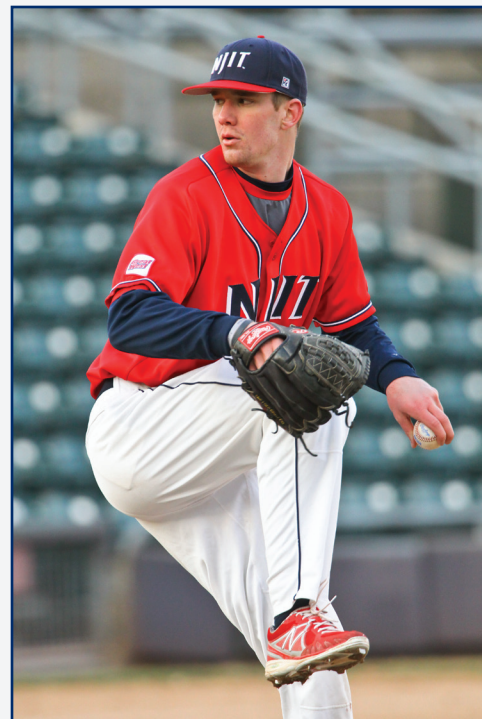
## — PITCHING —

### Earned Run Average (career/min 120 IP)

4.15	Mark Leiter, Jr. (166/360.1 IP)	2010-13
4.92	Matt Coughlin (104/190.1 IP)	2011-14
4.74	Tripp Davis (201/382.1 IP)	2010-13
6.52	Austin McAuliffe (106/146.1 IP)	2010-14
7.80	PJ Saporito (217/250.1 IP)	2006-09

### Earned Run Average (season/min 40 IP)

3.24	Ian Bentley	2014
3.29	Tripp Davis	2012
3.56	Mark Leiter, Jr.	2012
3.69	Tripp Davis	2011
3.81	Bill VanMeerbeke	2012
3.97	DJ Roche	20104
4.02	DJ Roche	2012
4.20	Alex Daniele	2014
4.33	Matt Coughlin	2013
4.72	Tripp Davis	2013
4.76	Mark Leiter, Jr.	2011
4.94	Mark Leiter, Jr.	2013
5.94	DJ Roche	2011
5.95	PJ Saporito	2007



Tyler Kapp

6.12	Rob Pietrocola	2007
6.30	Brian Ascolese	2007

### Wins (career)

19	Tripp Davis	2010-13
18	Mark Leiter, Jr.	2010-13
12	Matt Coughlin	2011-14
11	DJ Roche	2010-14
10	PJ Saporito	2007-09
6	Austin McAuliffe	2010-14
5	Bill VanMeerbeke	2012, 2013
4	Bobby Wyrwa	2007-10
	Cory Kuzmik	2006-08

### Wins (season)

6	Ian Bentley	2014
	Tripp Davis	2011
	PJ Saporito	2007
5	Tripp Davis	2013
	Mark Leiter, Jr.	2013
	Tripp Davis	2012
	Mark Leiter, Jr.	2012
	Mark Leiter, Jr.	2011
4	DJ Roche	2014
	Alex Daniele	2014
	Matt Coughlin	2013

# School Records—Division I

	Matt Coughlin	2012
3	Ian Bentley	2013
	DJ Roche	2012
	Joe Fasano	2012
	Tripp Davis	2010
	Mark Leiter, Jr.	2010
	PJ Saporito	2009
	Cory Kuzmik	2007

## Appearances (career)

67	Austin McAuliffe	2010-14
58	DJ Roche	2010-14
	Tripp Davis	2010-13
	Mark Leiter, Jr.	2010-13
56	Steven Ace	2008-11
53	Matt Melody	2007-09
51	Matt Coughlin	2011-14
48	Kyle Burdi	2010-13
46	Spiro Molfetas	2007-08
<b>44</b>	<b>Joe Fasano</b>	<b>2011-pres.</b>
42	Bobby Wyrwa	2007-10
39	PJ Saporito	2007-09

## Appearances (season)

27	Matt Melody	2008
26	Spiro Molfetas	2008
25	DJ Roche	2010
22	Kyle Burdi	2011
20	Five Tied	2010

## Games Started (career)

58	Tripp Davis	2010-13
56	Mark Leiter, Jr.	2010-13
37	PJ Saporito	2007-09
28	DJ Roche	2010-14
27	Bobby Wyrwa	2007-10
19	Matt Melody	2007-09
16	Rob Pietrocola	2007-08

## Games Started (season)

15	Tripp Davis	2013
	Mark Leiter, Jr.	2013
	Tripp Davis	2011
14	Tripp Davis	2012
	Mark Leiter, Jr.	2012
	Tripp Davis	2010
	Mark Leiter, Jr.	2010
	PJ Saporito	2008



Robbie McClellan

13	Mark Leiter, Jr.	2011
	Bobby Wyrwa	2008
12	PJ Saporito	2007
15	Mark Leiter, Jr.	2010-13
13	Tripp Davis	2010-13
6	PJ Saporito	2007-09
3	Bobby Wyrwa	2007-10
2	Brian Ascolese	2006-07

## Complete Games (career)

15	Mark Leiter, Jr.	2010-13
13	Tripp Davis	2010-13
6	PJ Saporito	2007-09
3	Bobby Wyrwa	2007-10
2	Brian Ascolese	2006-07

## Complete Games (season)

6	Tripp Davis	2011
5	Mark Leiter, Jr.	2013
	PJ Saporito	2009
4	Tripp Davis	2013
	Mark Leiter, Jr.	2010
3	Tripp Davis	2012
	Mark Leiter, Jr.	2012
	Bill VanMeerbeke	2012
	Mark Leiter, Jr.	2011
2	Matt Coughlin	2013
	DJ Roche	2012

	DJ Roche	2011
	Bobby Wyrwa	2010
	Brian Ascolese	2007

## Shutouts (career)

3	DJ Roche	2010-14
2	Tripp Davis	2010-13
	Mark Leiter, Jr.	2010-13
1	PJ Saporito	2007-09
	Bobby Wyrwa	2007-10

## Shutouts (season)

2	DJ Roche	2015
1	Mark Leiter, Jr.	2013
	Tripp Davis	2012
	Mark Leiter, Jr.	2012
	Tripp Davis	2011
	DJ Roche	2011
	PJ Saporito	2007
	Bobby Wyrwa	2008

## Saves (career)

7	Cory Kuzmik	2006-08
	<b>Ian Bentley</b>	<b>2013-pres.</b>
5	Austin McAuliffe	2010-14

## Saves (season)

7	Cory Kuzmik	2007
5	Ian Bentley	2013
3	Austin McAuliffe	2010

## Innings Pitched (career)

382.2	Tripp Davis	2010-13
360.1	Mark Leiter, Jr.	2010-13
208	PJ Saporito	2007-09
204.1	DJ Roche	2010-14
190.1	Matt Coughlin	2011-14
155	Bobby Wyrwa	2007-10
146.1	Austin McAuliffe	2010-14
106	Kyle Burdi	2010-13
94	Cory Kuzmik	2006-08
88.2	Rob Pietrocola	2007-08

## Innings Pitched (season)

107.1	Tripp Davis	2011
98.1	Tripp Davis	2012
97.1	Tripp Davis	2013
94.2	Mark Leiter, Jr.	2013



93.2	Mark Leiter, Jr.	2012
90.2	Mark Leiter, Jr.	2011
81.1	Mark Leiter, Jr.	2010
79.1	Tripp Davis	2010
75.2	PJ Saporito	2007
72.1	Ian Bentley	2014
72.0	Matt Coughlin	2013
	PJ Saporito	2009
70.0	Bobby Wyrwa	2010

#### **Innings Pitched (game)**

9.0	Tripp Davis	2013 (1 time)
	Mark Leiter, Jr.	2013 (1 time)
	Matt Coughlin	2013 (1 time)
	Tripp Davis	2012 (2 times)
	Mark Leiter, Jr.	2012 (1 time)
	Tripp Davis	2011 (4 times)
	Mark Leiter, Jr.	2011 (2 times)
	DJ Roche	2011 (1 time)
	Mark Leiter, Jr.	2010 (2 times)
	Bobby Wyrwa	2010 (1 time)
	PJ Saporito	2009 (2 times)
	Brian Ascolese	2007 (1 time)
	Rob Pietrocola	2007 (1 time)
	PJ Saporito	2007 (1 time)

#### **Least Walks/9 IP (season)**

1.55	PJ Saporito (13 BB/75.2 IP)	2007
------	-----------------------------	------

#### **Strikeouts (career)**

364	Mark Leiter, Jr.	2010-13
309	Tripp Davis	2010-13
202	DJ Roche	2010-14
151	PJ Saporito	2007-09
140	Matt Melody	2007-09
91	Cory Kuzmik	2006-08

#### **Strikeouts (season)**

106	Mark Leiter, Jr.	2013
103	Mark Leiter, Jr.	2011
95	Mark Leiter, Jr.	2012
82	Tripp Davis	2012
87	Tripp Davis	2013
	Tripp Davis	2011
85	DJ Roche	2014
66	Alex Daniele	2014
62	Matt Melody	2008
	PJ Saporito	2007

60	Mark Leiter, Jr.	2010
59	Cory Kuzmik	2008

#### **Strikeouts/9 IP (career)**

7.27	Tripp Davis (309K/382.1IP)	2010-13
7.25	DJ Roche (157K/204.1IP)	2010-14
8.87	Matt Melody (140 K/142 IP)	2007-09
8.71	Cory Kuzmik (91 K/94 IP)	2007-08
9.09	Mark Leiter, Jr. (364K/360.1IP)	2010-13

#### **Strikeouts/9 IP (season)**

7.29	Tripp Davis (87K/107.1IP)	2011
8.04	Tripp Davis (87K/97.1IP)	2013
8.32	DJ Roche (49K/53IP)	2011
10.08	Mark Leiter, Jr. (106K, 94.2IP)	2013
10.22	Mark Leiter, Jr. (103K/90.2IP)	2011
10.73	Matt Melody (62 K/52 IP)	2008

### **— TEAM RECORDS —**

**Most Games:** 57, 2010

**Most Wins:** 25, 2012

**Highest Winning Pct.:** .370 (20-34), 2013

**Most Consecutive Wins:** 5, 2012 (March 31 – April 6)

**Highest Batting Average:** .272, 2012

**Lowest ERA:** 4.69, 2012

**Highest Fielding Percentage:** .953, 2011

**Most Double Plays:** 51, 2010

**Most Triple Plays:** none

**Home Runs:** 34, 2007

## Men's Year-by-Year Results

## 1949

4/12 at Stevens  
 4/15 Open  
 4/16 Open  
 4/23 at Drew  
 4/27 NEWARK RUTGERS  
 4/30 BLOOMFIELD  
 5/4 at Upsala  
 5/7 Open  
 5/11 Open  
 5/14 PANZER  
 5/18 MONTCLAIR STATE  
 5/21 STEVENS  
 5/25 at Montclair State  
 5/28 at Paterson State  
 6/1 Open  
 6/4 at Drew

Coach:

\*\* Schedule Incomplete

## 1950

4/14 at Panzer  
 4/15 at Drew  
 4/17 at Upsala  
 4/20 at Montclair State  
 4/24 MONTCLAIR STATE (at Montclair)  
 4/28 at Utica  
 4/29 at Clarkson Tech  
 5/4 at Newark Rutgers  
 5/6 at Bloomfield  
 5/12 PATERSON STATE  
 5/20 NEW PALTZ  
 5/27 at New Paltz  
 6/10 at Drew

Coach: Ed Johnson

\*\* Schedule Incomplete

## 1951

4/9 at Baltimore  
 4/11 at Stevens Tech  
 4/13 at Montclair State Teachers  
 4/14 PANZER  
 4/21 at Drew  
 4/28 at Newark State Teachers  
 5/5 MONTCLAIR STATE TEACHERS  
 5/5 at Upsala  
 5/12 BLOOMFIELD  
 5/19 NEWARK STATE TEACHERS  
 5/26 FAIRLEIGH DICKINSON  
 5/30 at New Paltz State Teachers



Mike Rampone

6/2 at Drew

Coach: Ed Johnson

\*\* Schedule Incomplete

## 1952

4/5 Fairleigh Dickinson\*  
 4/5 Bloomfield\*  
 4/12 Panzer\*  
 4/15 Baltimore (MD)  
 4/16 Open  
 4/17 Bridgewater (VA)  
 4/18 Lynchburg (VA)  
 4/19 Western Maryland  
 4/26 Stevens Tech  
 5/3 Panzer\*  
 5/10 Bloomfield\*  
 5/17 Montclair State\*(DH)  
 5/24 Open  
 5/31 Drew (DH)

\*N.J.I.A.C. Games

Coach: Ed Johnson

\*\* Schedule Incomplete

## 1953

Coach: Ed Johnson

\*\* Schedule Incomplete

## 1954 (1-7)

4/10 STEVENS L 1-3  
 4/13 at Panzer L 2-13  
 4/14 TRENTON L 2-15  
 4/15 at National Aggies L 8-11  
 4/17 at Drew cancelled  
 4/24 BLOOMFIELD (DH) L 1-2, L 3-5  
 5/1 at Rider L 0-17  
 5/1 at Newark S.T.C W 13-4  
 5/8 at Stevens  
 5/15 MONTCLAIR STATE (DH)  
 5/22 PANZER  
 5/24 NEWARK S.T.C

Coach: Ed Johnson

\*\* Schedule Incomplete

## 1955 (4-8)

4/12 at Paterson State cancelled  
 4/13 at Drew cancelled  
 4/14 NATIONAL AGGIES cancelled  
 4/16 STEVENS L 3-9  
 4/23 BLOOMFIELD (DH) W 4-1, L 2-14  
 4/30 NEWARK S.T.C (DH) W 4-0, W 11-4  
 5/7 at Stevens L 4-5  
 5/14 at Montclair State (DH) L 2-5, L 9-11  
 5/21 PANZER (DH) L 2-6, L 2-11  
 5/28 at Drew (DH) L 1-3, W 8-2

Coach: Joseph Fitzgerald

## 1956 (4-5)

4/7 STEVENS  
 ppd  
 4/9 FAIRLEIGH DICKINSON cancelled  
 4/11 at Saint Peter's L 4-6  
 4/14 at Newark Rutgers L 1-7  
 4/21 at Montclair State L 3-12  
 4/21 BLOOMFIELD W 6-4  
 4/28 DREW (at Madison) W 12-6  
 5/5 at Paterson State W 4-0  
 5/12 at Stevens (DH) L 1-2, L 4-7  
 5/19 PANZER W 11-4  
 5/26 at Bloomfield cancelled

Coach: J. Fitzgerald

## 1957 (6-6)

3/30 PATERSON (at Paterson) W 6-4  
 4/6 at Stevens ppd

4/8	at Drew		ppd
4/10	at Saint Peter's	L	4-7
4/11	at Fairleigh Dickinson	L	2-4
4/13	NEWARK RUTGERS	L	0-4
4/20	DREW (DH)	L 2-5, L 3-6	
4/27	MONTCLAIR STATE	L	4-9
5/4	STEVENS (DH)	W 3-0, W 5-2	
5/11	NEWARK S.T.C (DH)	W 8-5, W 4-1	
5/18	at Panzer	W	3-2

Coach: Paul C. Hausser

### 1958

4/5	at Paterson State	L	2-4
4/8	at Saint Peter's	L	2-4
4/9	at Stevens	L	1-15
4/10	at Newark Rutgers	L	9-11
4/12	FAIRLEIGH DICKINSON (at FDU)		
		L	2-10
4/19	at Montclair State	L	5-9
4/26	at Drew	L	9-10
5/3	STEVENS (at Stevens)	cancelled	
5/10	NEWARK S.T.C (DH)	L 5-6, W 12-2	
5/17	PANZER	L	2-14
4/24	BLOOMFIELD		

Coach: P.C. Hausser

\*\* Schedule Incomplete



Brian Sondergard

### 1959

4/4	PATERSON STATE (at P.S.C)		
		W	3-2
4/7	at Fairleigh Dickinson	L	1-11
4/8	at Saint Peter's	L	4-14
4/9	DREW (at Drew)	W	7-4
4/11	NEWARK RUTGERS		
4/18	MONTCLAIR STATE (at Montclair)		
		W	12-6
4/25	STEVENS (at Stevens)	L	6-13
5/2	NEWARK STATE	L	1-7
5/9	at Stevens	L	2-8
5/16	BLOOMFIELD	L	0-3
5/23	MONMOUTH	cancelled	

Coach: P.C. Hausser

\*\* Schedule Incomplete

### 1960 (3-6-1)

4/4	at Paterson State	L	3-5
4/6	at Newark State	W	9-7
4/7	FAIRLEIGH DICKINSON	cancelled	
4/9	STEVENS (at Stevens)	L	5-9
4/16	at Montclair State	L	2-16
4/23	at Newark Rutgers	L	4-9
4/30	at Drew	L	3-4
5/7	at Bloomfield	W	5-2
5/14	at Stevens	T	8-8
5/21	at Monmouth (DH)	L 0-2, W 5-1	

Coach: Paul C. Hausser

### 1961

4/8	PATERSON STATE (at Paterson)		
		L	1-8
4/11	NEWARK STATE (at Newark State)		
		ppd	
4/13	at Saint Peter's	cancelled	
4/15	MONTCLAIR STATE (at Montclair)		
		L	2-8
4/22	NEWARK RUTGERS	W	11-5
4/29	DREW (at Drew)		
		ppd	
5/6	at Stevens	L	10-11
5/13	BLOOMFIELD	cancelled	
5/13	DREW (at Drew)		
5/16	NEWARK STATE (at Newark State)		
5/20	MONMOUTH	W	5-0

Coach: Paul C. Hausser

\*\* Schedule Incomplete

### 1962 (4-5)

4/7	at Paterson State	cancelled	
4/10	at Stevens	W	4-2
4/12	at Newark State	W	6-0
4/14	at Montclair State	L	1-10
4/21	at Newark Rutgers	W	5-4
4/28	at Drew	W	10-6
5/5	STEVENS (at Stevens)	L	4-5
5/12	at Bloomfield	L	3-4
5/19	at Monmouth (DH)	L 3-4, L 5-15	

Coach: Paul C. Hausser

### 1963 (4-4)

4/6	PATERSON STATE (at Paterson)		
		L	6-12
4/10	STEVENS (at Stevens)	W	4-2
4/11	at Newark State	W	7-0
4/13	MONTCLAIR STATE (at Montclair)		
		W	8-5
4/20	NEWARK RUTGERS	L	6-13
4/27	DREW (at Drew)	L	2-9
5/4	at Upsala	L	0-5
5/11	at Stevens	W	3-2
5/18	MONMOUTH	cancelled	

Coach: Paul C. Hausser

### 1964 (2-6)

4/4	at Paterson	L	4-14
4/6	UPSALA (at Upsala)	L	6-14
4/8	STEVENS	cancelled	
4/10	NEWARK STATE	W	5-2
4/11	at Montclair State	L	1-2
4/18	at Newark Rutgers	W	6-1
4/25	at Drew	L	2-3
5/2	at Monmouth	L	3-5
5/15	at Stevens	L	3-5

Coach: Paul C. Hausser

### 1965 (4-6)

4/3	PATERSON STATE (at Paterson)		
		L	2-9
4/10	MONTCLAIR STATE (at Montclair)		
		L	1-5
4/12	at Upsala	W	8-6
4/15	at Bloomfield	L	2-5
4/17	at Stevens	W	7-1
4/24	NEWARK RUTGERS	L	0-2
5/1	DREW (at Drew)	W	4-3
5/8	at Saint Peter's	L	2-4



## Men's Year-by-Year Results

5/15 at Monmouth L 7-8  
 5/22 at Newark State W 7-4  
 Coach: Paul C. Hausser

**1966 (3-6)**

4/2 at Paterson W 4-1  
 4/9 at Montclair State L 2-10  
 4/11 at Newark Rutgers L 0-8  
 4/14 vs Bloomfield W 4-2  
 4/15 UPSALA L 1-11  
 4/16 at Saint Peter's L 5-6  
 4/23 NEWARK STATE W 8-4  
 4/30 at Drew cancelled  
 5/7 at Monmouth L 1-2  
 5/14 at Stevens L 1-2  
 Coach: Paul C. Hausser

**1967**

4/1 PATERSON L 1-6  
 4/8 at Montclair State cancelled  
 4/10 SAINT PETER'S L 5-8  
 4/12 at Upsala L 9-17  
 4/13 NEWARK RUTGERS W 1-0  
 4/22 DREW (at Drew)  
 4/29 at Newark State W 16-2  
 4/29 STEVENS (at Stevens) W 6-3  
 5/6 at Monmouth L 0-9  
 5/13 at Bloomfield (DH) L 0-1, L 0-1  
 Coach: P.C. Hausser

\*\* Schedule Incomplete



Joe Fasano

**1968 (3-8)**

3/30 at Drew W 19-5  
 4/1 UPSALA (at Upsala) L 0-1  
 4/4 at Paterson L 0-6  
 4/6 MONTCLAIR STATE (at Montclair) L 0-8  
 4/13 at Newark Rutgers L 8-9  
 4/20 at Saint Peter's L 0-4  
 4/27 at Bloomfield (DH) W 3-2, W 2-0  
 5/4 at Monmouth L 5-14  
 5/11 at Stevens L 8-9  
 5/18 NEWARK STATE (at Newark State) L 1-15  
 Coach: Paul C. Hausser

**1969 (1-6)**

3/31 at Upsala W 4-1  
 4/2 PATERSON (at Paterson) cancelled  
 4/4 STEVENS (at Stevens) L 1-5  
 4/5 at Montclair State L 0-5  
 4/12 at Saint Peter's L 2-8  
 4/19 at Bloomfield cancelled  
 4/26 DREW (at Drew) L 2-14  
 5/3 at Monmouth L 3-9  
 5/10 NEWARK RUTGERS cancelled  
 5/17 at Newark State L 4-8  
 Coach: Paul C. Hausser

**1970 (1-10)**

4/1 at Paterson cancelled  
 4/4 at Monmouth L 1-16  
 4/8 at Montclair L 7-8  
 4/11 at Bloomfield (DH) L 3-5, L 5-6  
 4/15 at Upsala L 1-6  
 4/18 at Hunter W 14-6  
 4/22 at Saint Peter's L 0-5  
 4/25 at Drew L 6-9  
 5/2 at Trenton L 2-3  
 5/9 at Newark Rutgers L 4-5  
 5/13 NEWARK STATE (at Newark State) cancelled  
 5/16 at Stevens L 0-2  
 Coach: Paul C. Hausser

**1971 (5-10)**

3/27 UPSALA (at Upsala) L 1-12  
 3/31 at Paterson State L 7-9  
 4/3 at Monmouth L 4-14  
 4/7 at Brooklyn Poly cancelled  
 4/10 at Montclair State L 0-17

4/13 at Howard W 8-5  
 4/14 at Federal City L 2-5  
 4/15 at Univ. of PENN L 2-9  
 4/17 at Saint Peter's L 1-2  
 4/21 at Bloomfield W 24-3  
 4/24 at Drew (DH) W 7-6, W 3-0  
 4/28 NEWARK RUTGERS L 0-10  
 5/1 at Trenton State L 4-9  
 5/5 at Hunter W 14-3  
 5/8 at Stevens cancelled  
 5/12 at Newark State L 6-9  
 5/15 at Pratt cancelled  
 Coach: Paul C. Hausser

**1972 (1-9)**

3/25 at Upsala L 0-3  
 3/29 at William Paterson L 1-2  
 4/1 at Monmouth L 4-12  
 4/7 at Newark State cancelled  
 4/8 at Drew (DH) ppd  
 4/12 at FDU-Madison W 14-6  
 4/15 SAINT PETER'S cancelled  
 4/19 at Bloomfield L 2-8  
 4/22 at N.Y.S.M.C L 2-3  
 4/26 at Newark Rutgers L 3-6  
 4/29 at Trenton State L 4-7  
 5/3 at Hunter cancelled  
 5/6 at Stevens L 1-2  
 5/10 at Newark State cancelled  
 5/11 at Drew L 0-1  
 5/13 at Pratt cancelled  
 5/17 at Brooklyn Poly cancelled  
 Coach: Paul C. Hausser

**1973 (9-11-1)**

3/27 at Newark State L 3-9  
 3/24 UPSALA (at Upsala) L 0-18  
 3/28 at Paterson L 3-9  
 3/31 at Monmouth L 1-3  
 4/4 at Saint Peter's L 2-3  
 4/7 at Montclair State L 1-17  
 4/11 at FDU-Madison T 4-4  
 4/14 at Livingston (DH) W 3-2, W 5-1  
 4/16 at Morgan L 3-12  
 4/18 at D.C. Teachers W 13-4  
 4/19 at Bloomfield W 1-0  
 4/21 at Brooklyn Poly W 9-3  
 4/25 NEWARK RUTGERS W 6-3  
 4/28 at Trenton cancelled  
 5/2 at Hunter W 7-6  
 5/5 at Stevens L 4-8

5/9 at Newark State W 8-0  
 5/12 at Drew (3) L 3-8, L 3-5, W 7-0  
 5/16 at Maritime L 0-5

Coach: Gene Schmid

#### 1974

3/23 at Upsala W 3-0  
 3/27 PATERSON L 1-3  
 3/30 at Monmouth L 1-8  
 4/3 at Saint Peter's W 6-3  
 4/6 at Montclair State L 0-21  
 4/10 at FDU-Madison W 12-0  
 4/12 at Livingston (DH) W 3-1, L 1-2  
 4/13 at Pratt cancelled  
 4/17 at Newark Rutgers W 13-0  
 4/20 DOMINICAN W 6-5  
 4/24 BROOKLYN POLY  
 4/27 at Trenton L 2-9  
 5/1 at Bloomfield W 5-2  
 5/4 at Stevens W 10-6  
 5/5 at Englewood Cliffs (DH) W, W  
 5/8 at Newark State L 3-4  
 5/11 at Drew (DH) W 8-1, W 12-2  
 5/12 at Maritime forfeit  
 5/18 RAMAPO (DH) L 2-9, L 3-9

Coach: Gene Schmid

\*\* Schedule Incomplete

#### 1975 (6-11-1)

3/26 at Livingston W 8-5  
 3/28 at Livingston L 14-15  
 3/29 at Monmouth L 3-14  
 4/2 at Saint Peter's L 8-10  
 4/5 at Montclair State ppd  
 4/9 at FDU-Madison W 4-0  
 4/12 DOMINICAN (DH) L 8-12, L 0-2  
 4/16 RUTGERS-NEWARK L 2-11  
 4/19 BROOKLYN POLY (DH)\* L 4-9, L 0-1  
 4/23 at Maritime\* W 3-2  
 4/26 at Trenton State ppd  
 4/27 at Upsala L 3-14  
 4/30 BLOOMFIELD L 5-6  
 5/3 at Stevens\* W 2-1  
 5/7 at Kean ppd  
 5/10 at Drew (DH)\* T 0-0, L 1-2  
 5/14 PRATT forfeit  
 5/17 at Ramapo (DH) W 5-4, W 6-3

Coach: Gene Schmid

\*-IAC League Game

#### 1976

3/20 at Upsala  
 3/24 at William Paterson  
 3/27 at Monmouth  
 3/31 at Saint Peter's  
 4/3 MONTCLAIR STATE  
 4/5 at Northeastern Bible  
 4/7 at FDU-Madison  
 4/10 at Livingston (DH)  
 4/11 ST THOMAS (DH)  
 4/14 at Rutgers-Newark  
 4/16 DOMINICAN (DH)  
 4/17 NYU POLY (DH)\*  
 4/21 at Maritime\*  
 4/24 at Trenton State  
 4/28 at Bloomfield  
 5/1 at Stevens\*  
 5/5 at Kean  
 5/8 at Drew (DH)\*  
 5/12 at Pratt  
 5/15 RAMAPO (DH)

Coach: Gene Schmid

\*-IAC League Game

\*\* Schedule Incomplete

#### 1977 (19-7)

3/23 at William Paterson ppd  
 3/26 at Livingston (DH) W 11-4, W 8-5  
 3/30 SAINT PETER'S W 4-2  
 4/2 at Montclair State L 1-2 (10)  
 4/8 at Kean L 3-15  
 4/8 STOCKTON W 20-6  
 4/9 at Monmouth (DH) L 1-4, L 1-14  
 4/13 RUTGERS-NEWARK W 7-2  
 4/16 NYU POLY TECH (DH)\* W 5-0, W 9-3  
 4/17 at FDU-Madison W 6-2  
 4/20 MARITIME W 14-0  
 4/23 at Trenton State (DH) W 3-0, L 4-5  
 4/24 DOMINICAN (DH) forfeit  
 4/25 at Northeastern Bible W 16-0  
 4/27 BLOOMFIELD W 10-4  
 4/29 UPSALA L 3-11  
 4/30 at Stevens\* W 7-6  
 5/4 at Kean cancelled  
 5/6 at Seton Hall ppd  
 5/7 DREW\* W 3-0  
 5/7 LIVINGSTON W 3-2  
 5/8 BARUCH (DH) L 2-8, W 5-4



Ian Bentley

5/11 JERSEY CITY STATE L 3-4  
 5/14 at Ramapo (DH) W 9-7, W 8-2  
 5/16 ALUMNI

Coach: Gene Schmid

\*-IAC League Game

\*\*Schedule Incomplete

#### 1978 (12-16-1)

3/25 at Stockton W 7-6  
 3/29 at Saint Peter's W 10-7  
 4/1 at Montclair State L 0-18  
 4/2 RAMAPO L 6-9  
 4/5 at FDU-Madison W 12-4  
 4/8 at Monmouth (DH) L 3-5, L 4-12  
 4/9 at Trenton State L 9-13  
 4/12 at Rutgers-Newark W 13-5  
 4/15 at Stevens (DH) L 1-3, T 0-0  
 4/16 at Upsala W 6-5  
 4/19 at Maritime cancelled  
 4/22 HOWARD (DH) L 7-19, L 0-9  
 4/23 at Livingston (DH) L 8-12, W 5-0  
 4/25 BLOOMFIELD W 14-3  
 4/29 NYU POLY TECH (DH) W 7-3, L 4-7  
 4/30 BARUCH (DH) W 12-8, W 11-2  
 5/3 at Kean L 2-7

## Men's Year-by-Year Results

5/6	STATEN ISLAND (DH)	W 10-3, L 0-1
5/7	at Drew (DH)	L 3-4, W 4-3
5/7	JERSEY CITY STATE	L 1-9
5/10	at Kean	L 1-10
5/12	at Seton Hall	L 2-10

Coach: Gene Schmid

## 1979 (12-11)

3/28	at Saint Peter's	L 1-5
3/31	at Montclair State	L 0-8
4/1	at Ramapo	L 3-6
4/7	MONMOUTH	L 2-10
4/8	at Trenton State	L 6-12
4/11	RUTGERS-NEWARK	W 7-0
4/13	vs Livingston (at Rutgers)	W 9-2
4/17	at FDU-Madison	W 7-6
4/18	MARITIME	W 19-2
4/20	STEVENS*	W 14-5
4/21	at Howard (DH)	L 3-4, L 2-6
4/22	at Stockton	L 2-10
4/25	DREW*	W 11-1
4/26	BLOOMFIELD	cancelled
4/28	NYU POLY TECH	W 4-3
4/29	at Staten Island (DH)	W 7-5, W 7-2
5/2	KEAN	L 5-8
5/4	at Upsala	W 8-6
5/5	at Baruch (DH)	W 8-4, W 8-6
5/6	at Jersey City State	L 5-6
5/8	vs William Paterson	cancelled
5/9	at Kean	L 6-16
5/12	at Seton Hall	cancelled

Coach: Gene Schmid

\*-IAC League Game

## 1980 (16-12)

3/22	at Stockton	cancelled
3/23	at Upsala	L 0-11
3/26	at Saint Peter's	W 2-1
3/29	at Montclair State	cancelled
3/30	at Ramapo	cancelled
4/2	at FDU-Madison	W 12-1
4/5	at Livingston (DH)	L 2-5, W 4-3
4/9	at Rutgers-Newark	W 9-4
4/11	DREW	W 5-3
4/12	at Stevens (DH)*	W 9-5, W 7-2
4/13	at Monmouth	L 3-14
4/15	BLOOMFIELD	W 5-4
4/16	at Maritime	W 10-3
4/19	MANHATTAN (DH)	L 0-1, L 3-10
4/20	at Trenton State	L 2-9



Ed Charlton

4/22	WILLIAM PATERSON	L 6-14
4/23	at Drew*	W 6-3
4/26	at NYU Poly Tech (DH)*	L 0-1, W 11-3
4/27	ST THOMAS AQUINAS	cancelled
4/30	KEAN	cancelled
5/3	BARUCH (DH)	W 10-1, W 7-5
5/4	JERSEY CITY STATE	W 5-4
5/7	at Kean	L 4-9
5/10	at Penn State (Capital Campus) (DH)	W 9-7, W 11-0
5/11	JOHN JAY (DH)	L 7-8, L 5-7
5/14	NYU POLY TECH (IAC Playoff game)	L 1-3

Coach: Gene Schmid

\*-IAC League Game

## 1981 (21-8)

3/25	at Saint Peter's	W 13-5
3/28	at Montclair	L 1-16
3/29	at Ramapo	L 7-8
4/1	at FDU-Madison	W 6-2
4/4	at Livingston (DH)	L 1-2, W 5-4
4/5	ST THOMAS AQUINAS (DH)	W 3-2, W 7-6
4/8	RUTGERS-NEWARK	W 6-5
4/11	STEVENS (DH)*	W 10-0, W 12-8

4/15	MARITIME*	forfeit
4/17	UPSALA	L 5-10 (10)
4/17	MONMOUTH	L 2-11
4/18	MANHATTAN (DH)	W 10-9, W 8-6
4/22	at Stockton	W 5-2
4/25	NYU POLY TECH (DH)*	W 14-0, W 18-12
4/26	at Trenton State	W 10-8
4/28	at William Paterson	L 2-12
4/29	KEAN	W 8-7 (10)
5/2	BARUCH (DH)	W 1-0, W 10-0
5/3	JERSEY CITY STATE	L 0-5
5/8	at Kean	L 3-21
5/9	DREW (DH)*	W 5-1, L 2-4
5/10	PENN STATE (Capital) (DH)	W 5-4, W 7-2

Coach: Gene Schmid

\*-IAC League Game

## 1982 (22-4)

3/24	SAINT PETER'S	W 7-1
3/27	MONTCLAIR STATE	L 0-12
3/28	at Ramapo	L 6-21
4/14	at Rutgers-Newark	W 3-2
4/16	vs Bloomfield (at Breslin)	W 13-3
4/17	MANHATTAN (DH)	W 3-1, W 9-8
4/18	at Livingston (DH)	W 7-6, W 6-1
4/24	at NYU Poly Tech (DH)*	W 23-0, W 10-1
4/25	at Trenton State	L 4-7
4/30	at Upsala	L 1-6
5/1	at Maritime (DH)*	W 16-5, W 5-0
5/2	at Stevens (DH)*	W 10-2, W 8-4
5/2	JERSEY CITY STATE	W 8-6
5/4	WILLIAM PATERSON	W 6-5
5/5	at Kean	W 20-6
5/8	at Drew (DH)*	W 4-0, W 13-0
5/12	at Seton Hall	W 17-5
5/22	vs Manhattanville (at Upsala)#	W 13-0
5/26	vs Brooklyn (at Upsala)#	W 10-8
5/27	BARUCH	W 6-0

Coach: Gene Schmid

\*-IAC League Game

#-ECAC Tournament Game

## 1983 (14-13)

3/26	at Montclair State	L 1-26
3/27	at Ramapo	L 2-8
3/30	FDU	W 3-2
4/1	at Quinnipiac	W 3-2
4/1	at New Haven	L 4-26



4/2	at Sacred Heart	L	2-9
4/6	RUTGERS-NEWARK	W	5-2
4/8	UPSALA	W	9-6
4/13	at St Thomas Aquinas	W	8-7
4/14	BLOOMFIELD	L	3-4
4/17	LIVINGSTON (DH)	L 4-7, W 10-4	
4/18	STEVENS (DH)*	W 2-0, W 6-5	
4/23	NYU POLY TECH (DH)*	W 7-1, W 9-1	
4/24	at Trenton State	L	3-7
4/27	at Kean	L	2-18
4/30	MARITIME (DH)*	W 6-3, W 18-2	
5/1	JERSEY CITY STATE	L	2-3
5/2	SETON HALL	L	0-9
5/3	at William Paterson	L	7-14
5/4	KEAN	L	1-15
5/7	DREW (at Drew) (DH)*	W 5-0, W 7-4	
5/18	vs John Jay (at Kean)#	L	3-4

Coach: Gene Schmid

\*-IAC League Game

#-ECAC Tournament Game

#### 1984 (14-13)

4/1	at Trenton State (DH)	L 9-19, W 8-4	
4/7	at Stevens (DH)*	L 4-6, W 4-3	
4/8	at Saint Peter's	L	6-7
4/11	at Maritime (DH)*	W 3-1, W 7-3	
4/12	at Bloomfield	L	3-4
4/18	at Upsala	L	1-3
4/20	ST THOMAS AQUINAS (DH)	L 4-11, L 1-11	
4/21	at NYU Poly Tech (DH)*	W 15-2, W 13-0	
4/24	DOMINICAN	W	11-0
4/25	KEAN	W	7-6
4/28	at Stockton	W	9-5
4/29	JERSEY CITY STATE	W	4-1
4/30	at Rutgers-Newark	W	6-2
5/2	at Kean	L	7-12
5/5	at Drew (DH)*	L 5-6, L 2-7	
5/6	KING'S (DH)	W 11-5, W 8-7	
5/12	at East Stroudsburg (DH)	L 0-8, L 4-11	
5/18	vs John Jay (at Upsala)#	W	12-2
5/19	at Upsala#	L	7-10

Coach: Gene Schmid

\*-IAC League Game

#-ECAC Tournament Game

#### 1985 (15-15)

3/27	at St Thomas Aquinas	L	3-9
3/30	RUTGERS-NEWARK	L	5-17

3/31	at Trenton State (DH)	L 0-19, L 2-3	
4/3	at Saint Peter's	W	5-4
4/5	at West Connecticut (DH)	W 14-2, W 10-2	
4/6	STEVENS (DH)*	L 3-7, W 7-6	
4/10	CCNY	W	5-4
4/11	BLOOMFIELD	L	2-19
4/13	at Stockton (DH)	W 20-5, W 22-6	
4/14	at Montclair State	L	4-15
4/17	at Upsala	L	3-9
4/20	NYU POLY TECH (DH)*	W 9-0, L 3-4	
4/21	MARITIME (DH)*	W 11-7, W 5-1	
4/24	KEAN	L	4-7
4/26	EAST STROUDSBURG	W	7-6
4/27	at Dominican	L	4-8
4/28	at Jersey City State	L	1-11
4/29	at William Paterson	L	3-9
5/1	at Drew (DH)*	L 6-7, W 12-9	
5/4	vs Dominican (at Upsala) (DH)	W 4-1, W 8-7	

Coach: Gene Schmid

\*-IAC League Game

5/5 at King's (DH)

W 14-0, L 6-7



Rex MacMillan

#### 1986 (12-15)

3/23	at Manhattanville	L	2-5
3/26	at FDU-Madison	L	5-6
3/28	at Rutgers-Cook	W	14-3
3/29	at Rutgers-Newark	L	7-9
4/2	SAINT PETER'S	W	5-3
4/5	at Stevens (DH)*	L 3-5, W 4-3	
4/6	WESTERN CONNECTICUT (DH)*	L 0-3, W 4-1	
4/9	at Trenton State	L	6-9
4/10	at Bloomfield	W	6-2
4/12	at Stockton	W	17-8
4/13	MONTCLAIR STATE	L	3-4
4/19	at NYU Poly Tech (DH)*	W 7-1, W 11-2	
4/20	at Maritime (DH)*	L 4-5, W 16-12	
4/25	MANHATTAN (DH)	W 6-0, L 3-6	
4/26	DOMINICAN	L	2-15
4/27	JERSEY CITY STATE	L	4-21
4/30	DREW (DH)	L 8-9, L 1-3	
5/3	RUTGERS-COOK	W	12-5
5/4	KING'S (DH)	L 3-12, W 5-2	
5/7	at East Stroudsburg	L	4-7

\*-IAC League Game (IAC Record 5-3)

Coach: Gene Schmid

#### 1987 (15-17-1)

3/13	vs Kean (at Palm Beach)	L	5-9
3/15	vs Barry (at Miami Shores) (DH)	W 7-5, L 5-9	
3/16	at Boca Raton	L	2-13
3/17	vs Kean (at Lake Worth)	W	6-0
3/19	vs Jersey City State (at Florida)	L	6-11
3/19	vs Southern Connecticut (at Florida)	L	2-5
3/20	vs Bowdoin (at Miami Dade South)	W	8-3
3/21	vs East Stroudsburg (at Lake Worth)	W	4-2
3/22	at Manhattanville	L	8-11
3/25	at FDU-Madison (DH)	L 0-16, L 4-8	
3/29	MARITIME (at Maritime) (DH)*	W 7-2, W 3-2	
4/8	CCNY	W	10-3
4/9	BLOOMFIELD	L	7-14
4/11	KINGS POINT	L	3-6 (16)
4/12	at Cook's (DH)	W 9-0, W 9-0	
4/15	UPSALA (at Upsala)	L	3-7
4/22	at Western Connecticut (DH)*		



Brian Guiliana

		L 5-8, L 4-5
4/26	JERSEY CITY STATE	W 7-6
4/29	at Drew (DH)	L 4-5, T 4-4
5/1	STEVEN'S (DH)*	W 9-4, W 12-1
5/2	MANHATTAN (DH)	W 6-5, L 0-8
5/6	EAST STROUDSBURG (DH)	L 2-8, L 3-9
5/9	NYU POLY TECH (DH)*	W 17-5, W 6-0

Coach: Gene Schmid

\*-IAC League Game

**1988 (15-15-1)**

Maritime (DH)	W 8-0, W 10-8
CCNY	T 8-8
Plymouth State	L 3-10
Stevens (DH)	W 9-2, L 3-5
St Joseph's	W 7-1
St. Peter's	L 1-14
St Rose (DH)	W 3-2, L 4-14
USMMA (DH)	W 16-14, L 8-9
Mt St Mary's	W 17-4
NYU Poly Tech (DH)	W 13-5, W 4-1
Western Connecticut (DH)	L 2-8, W 5-4
Upsala	L 5-9
Rutgers-Newark	L 8-9
FDU-Madison (DH)	W 9-8, W 9-6

JCS	L 2-13
William Paterson	L 2-13
Drew (DH)	L 2-6, W 12-4
Kings (DH)	L 0-3, L 3-6
Kean	L 2-4
East Stroudsburg (DH)	W 7-2, W 4-1
Lehman	L 2-10

Coach: Gene Schmid

\*\*Schedule Incomplete

**1989 (19-14)**

East Stroudsburg	L 6-8
Nova	L 2-16
Wesleyan	L 5-12
Barry	L 1-14
S. CONN	L 6-23
Bowdin	W 11-8
NY Maritime	W 5-0, W 3-0
UMaine	W 4-2
St Rose	L 5-6, L 4-9
King's Point	W 4-0, W 15-1
Mt. St. Mary's	W 10-2
Bloomfield	W 5-4
Stevens	W 10-3, W 11-5
St. Thomas	W 7-4
FDU-Madison	L 2-8
FDU-Madison	L 6-10
Ursinus	L 7-18
Drew	W 9-4, W 13-4
Manhattan	W 23-21
King's (PA)	W 7-5, W 3-1
East Stroudsburg	L 2-7, L 7-9
NY Poly	W 14-1, W 11-0
Western Connecticut	L 0-8, W 5-3
Drew	L 3-5

Coach: Gene Schmid

\*\*Schedule Incomplete

**1990**

Florida Memorial	W
East Stroudsburg	W

Coach: Gene Schmid

\*\*Schedule Incomplete

**1991 (12-13)**

East Stroudsburg	W 7-4
Southern Connecticut	W 9-0

Coach: Gene Schmid

\*\*Schedule Incomplete

**1993 (16-16)**

Wesleyan	L
Upsala	L
Bowdoin	L
Bowdoin	L
Florida Memorial	W
Stockton State	W
Bloomfield	L
Old Westbury	L
NY Maritime	W
Vassar	W
Manhattanville	L
Stony Brook	W
Kings	W
East Stroudsburg	L
Upsala	L
St. Thomas Aquinas	L
Stevens Tech	W
NY Polytechnic	W
Kings Point	L

Coach: Gene Schmid

\*\*Schedule Incomplete

**1994 (11-18)**

Northwood	L
Northwood	L
Florida Memorial	L
Coast Guard Academy	W
East Stroudsburg	L
Bowdoin	L
Stevens Tech	L
Stevens Tech	L
Staten Island	W
Staten Island	L
Bloomfield	L
Poly Tech	W
Poly Tech	W
USMMA	W
Kings	L
Kings	W
NY Maritime	W
NY Maritime	W
Drew	L
Stony Brook	L
Stony Brook	L
Manhattanville	W
Manhattanville	W
CCNY	W
STAC	L
STAC	L

# Men's Year-by-Year Results

Upsala L  
East Stroudsburg L  
Wentworth L  
Coach: Gene Schmid  
\*\*Schedule Incomplete

**1995 (12-10)**  
Date Opponent Result  
Stevens Tech (DH) W, W  
Coach: Gene Schmid  
\*\*Schedule Incomplete

**1996 (12-13)**  
Coach: Gene Schmid  
@IAC (Record 5-1)  
#Skyline (Record 2-4)  
\*\*Schedule Incomplete

**1997(7-12)**  
IAC Championship W  
Coach: Gene Schmid  
#Skyline (Record 2-4)  
\*\*Schedule Incomplete



Bryan Haberstroh

**1998**  
**First year DII**  
Coach: Jim McDermott  
\*\*Schedule Incomplete

**1999 (11-25)**  
3/20 Mercy@ W 18-6  
Queens@ W 7-3  
Coach: David Sawicki  
@NYCAC (Record 6-18)  
\*\*Schedule Incomplete

**2000**  
Coach: David Sawicki  
\*\*Schedule Incomplete  
**2001**  
\*\*Schedule Incomplete

**2002 (14-26)**  
Coach: Brian Callahan  
\*\*Schedule Incomplete

**2003**  
Coach: Brian Callahan  
\*\*Schedule Incomplete

**2004**  
Coach: Brian Callahan  
\*\*Schedule Incomplete

**2005 (19-12)**  
3/4 vs East Stroudsburg (at Riverbank Park)  
3/5 vs Franklin Pierce (at Riverbank Park)  
3/7 at Molloy  
3/12 at Port Charlotte, FL  
3/13 at Port Charlotte, FL  
3/15 vs Truman State (at Fort Myers, FL)  
3/17 vs East Stroudsburg (at Port Charlotte, FL)  
3/18 vs Wayne State (at Port Charlotte, FL)  
3/21 WEST CHESTER  
3/22 BLOOMFIELD  
3/24 WILMINGTON (DE)  
3/25 at Wilmington (DE)  
3/28 C.W. POST  
3/29 at Caldwell  
3/31 DOMINICAN (NY)  
4/1 at Dominican (NY)  
4/5 FELICIAN

4/7 at Nyack  
4/8 NYACK  
4/9 at Monmouth  
4/12 at Bloomfield  
4/14 at Waterbury, CT  
4/15  
4/18 DOWLING  
4/19 CALDWELL  
4/22 USP  
4/23 at USP  
4/25 at West Chester  
4/26 at Felician  
4/28 at Philadelphia  
4/29 PHILADELPHIA  
5/2 CONCORDIA (NY)  
Coach: Brian Callahan  
@CACC Game (17-3 record)  
\*\*Schedule Incomplete

**2006 (28-17)**  
3/4 EAST STROUDSBERG cancelled  
3/5 FRANKLIN PIERCE cancelled  
3/7 at Molloy ppd  
3/12 vs Minnesota-Duluth ! L 2-11  
3/12 vs Minnesota-Duluth ! W 13-4  
3/13 vs Minnesota-Duluth ! W 5-2  
3/13 vs Minnesota-Duluth ! L 1-16  
3/15 vs St. Thomas Aquinas ! W 10-8  
3/16 vs Manhattan @  
3/17 vs East Stroudsburg ! L 5-8  
3/17 vs East Stroudsburg ! W 7-6  
3/18 vs Wayne State ! W 7-6  
3/18 vs Wayne State ! W 6-5  
3/21 at West Chester L 4-5  
3/22 BLOOMFIELD \$ W 20-11  
3/24 WILMINGTON (DE) \$ L 4-13  
3/25 at Wilmington (DE) L 4-11  
3/25 at Wilmington (DE) L 1-3  
3/28 C.W. POST \$ W 5-4  
3/29 at Caldwell  
L 6-9  
3/31 DOMINICAN (NY) \$ W 7-4  
4/2 at Dominican (NY) L 1-8  
4/2 at Dominican (NY) L 5-15  
4/5 FELICIAN (at First Energy Park) ppd  
4/7 at Nyack W 15-8  
4/8 NYACK ppd  
4/8 NYACK ppd  
4/9 FELICIAN W 3-2



## Men's Year-by-Year Results

4/9	at Monmouth		ppd
4/9	FELICIAN	L	9-10
4/12	at Bloomfield	W	5-0
4/12	at Bloomfield	W	9-7
4/14	at Post	W	8-6
4/15	POST	W	14-7
4/15	POST	W	9-1
4/17	EAST STROUDSBERG		
4/18	DOWLING	L	13-22
4/19	CALDWELL	L	2-7
4/19	CALDWELL	L	8-12
4/22	USP		ppd
4/22	USP		ppd
4/23	at USP		ppd
4/25	WEST CHESTER	W	9-8
4/26	at Felician	L	0-5
4/28	at Philadelphia	W	8-7
4/29	PHILADELPHIA	W	12-3
4/29	PHILADELPHIA	W	9-6
5/2	CONCORDIA (NY)	L	7-8
5/3	at USP	cancelled	
5/6	USP	W	4-3
5/6	USP	W	5-2
5/10	NYACK	W	5-3
5/10	NYACK	L	3-4
5/11	at Mercy	W	8-1
5/21	FELICIAN	W	18-4
5/21		W	10-9
5/21		W	14-4
5/22		W	6-3

Coach: Brian Callahan

\*\*Schedule Incomplete

! at Port Charlotte, FL @ at Palm Beach, FL

\$ at Commerce Bank Park

## 2007 (15-18)

2/16	at Georgia Southern	L	1-34
2/17	at Georgia Southern	L	4-5
2/18	at Georgia Southern	L	2-17
3/11	vs St. Bonaventure @		
		L	6-14
3/12	vs LIU @	W	23-12
3/13	vs Northern Illinois @	L	4-6
3/15	vs Northern Illinois @	W	9-8
3/16	vs Manhattan !	ppd	
3/17	vs Manhattan !	W	5-3
3/17	vs Fordham !	L	2-7
3/21	WAGNER	ppd	
3/24	at Lehigh	L	6-7
3/24	at Lehigh	W	5-4



Cody Kramer

3/25	LEHIGH (at Seton Hall)	L	4-5
3/25	LEHIGH (at Seton Hall)	L	6-12
3/27	ST. PETER'S	W	8-5
3/28	at Villanova	L	2-16
3/30	at UMBC	L	5-18
3/31	at UMBC	W	8-6
4/1	at UMBC	L	2-8
4/4	LAFAYETTE	ppd	
4/6	at Longwood	L	8-9
4/6	at Longwood	L	2-7
4/7	at Longwood	L	1-8
4/7	at Longwood	L	4-6
4/10	at Fordham	L	0-6
4/11	SAINT JOSEPH'S	L	3-9
4/15	CALDWELL	ppd	
4/15	CALDWELL	ppd	
4/17	EAST STROUDSBERG	ppd	
4/18	SAINT JOSEPH'S	W	6-3
4/24	at Army	W	7-2
4/25	ARMY	ppd	
4/26	ST. PETER'S	W	5-4
4/29	FELICIAN	W	8-7(10)
5/1	at Wagner	L	5-11
5/2	at St. Peter's	ppd	
5/4	NYIT	W	2-0
5/5	at NYIT	L	7-10

5/6	at NYIT	L	4-9
5/10	NYIT	L	4-17
5/12	at Binghamton	L	3-11
5/12	at Binghamton	L	1-15
5/13	at Binghamton	W	3-1
5/13	at Binghamton	L	2-3
5/16	at St. Peter's	cancelled	
5/18	at Hartford	cancelled	
5/19	at Hartford	W	4-2
5/19	at Hartford	L	8-9
5/23	vs Northern Colorado \$	W	13-12
5/24	at Utah Valley	L	3-23
5/25	vs South Dakota St. \$	W	7-4
5/26	vs North Dakota St. \$	L	6-9

Coach: Brian Callahan

@ at Palm Beach, FL ! at Lake Worth, FL

\$ at Utah Valley

## 2008 (5-47)

2/22	at USC Upstate	L	3-8
2/23	vs George Washington !	L	5-12
2/14	vs Tennessee-Martin !	W	14-4
3/1	at Furman	L	2-9
3/1	at Furman	L	1-13
3/2	at Furman	L	1-11
3/2	at Furman	L	3-10
3/7	at Delaware State	W	18-11
3/8	at Delaware State	ppd	
3/9	at Delaware State	L	11-18
3/12	at Rutgers	L	3-16
3/15	vs Penn @	L	1-12
3/16	vs Pittsburgh @	L	2-17
3/17	vs LIU @	L	1-4
3/19	vs Miami (at Coral Gables, FL)		
		L	1-13
3/20	at Florida Atlantic	L	11-21
3/21	vs Cornell @	L	2-17
3/25	at Seton Hall	L	1-6
3/26	SETON HALL	L	3-13
3/28	at Monmouth	L	3-10
3/29	at Monmouth	L	4-8
3/30	MONMOUTH	L	5-26
4/2	at Lafayette	ppd	
4/5	at Maine	L	3-15
4/6	vs NYIT (at Maine)	L	2-11
4/6	at Maine	L	0-19
4/8	FORDHAM	L	10-13
4/9	SAINT JOSEPH'S	L	5-14
4/12	VERMONT	L	1-3
4/12	VERMONT	L	3-11

4/13	VERMONT	L	2-17	5/24	vs Lemoyne \$	L	4-14	5/10	at Saint Peter's	L	5-10
4/13	VERMONT	L	6-17	Coach: Brian Callahan				5/10	at Saint Peter's	L	13-14
4/15	at Lehigh	L	1-5	@ at West Palm Beach, FL ! at Spartansburg, SC				Coach: Brian Callahan			
4/16	at Rider	L	1-8	\$ at Edinburg, TX				@ at North Carolina ! at Latana, FL			
4/19	HARTFORD	W	8-0								
4/19	HARTFORD	L	2-4	2009 (4-33)				2010 (13-44)			
4/20	HARTFORD	L	3-5	2/28	vs Pittsburgh @	cancelled		2/26-28	Courtyard by Marriot Baseball Classic		
4/22	ST. PETER'S	L	6-8	2/29	vs Pittsburgh @	cancelled		2/26	vs Butler (at USC-Upstate)	L	3-9
4/23	at Siena	L	2-11	3/1	vs Pittsburgh @	cancelled		2/27	vs Dayton (at USC-Upstate)	L	1-16
4/26	at Binghamton	L	1-7	3/7	at West Virginia	L	0-19	2/28	at USC-Upstate	L	2-3
4/26	at Binghamton	L	5-15	3/7	at West Virginia	L	3-13	3/6	at North Carolina A&T (DH)		
4/27	BINGHAMTON	L	2-3	3/8	at West Virginia	L	3-30			W 13-12, W 6-1	
4/27	BINGHAMTON	L	1-4	3/11	at Rutgers	L	1-11	3/7	at North Carolina A&T	L	4-8
4/29	at St. Peter's	L	10-11	Strike Out Cancer Tournament				3/10	at Rutgers	L	1-10
4/30	FAIRLEIGH DICKINSON	ppd		3/13	at Seton Hall	L	0-7	3/12-14	Strike Out Cancer Tournament		
5/3	at Army	cancelled		3/14	vs Iona (at Seton Hall)	W	2-1	3/12	at Seton Hall	L	2-15 (7)
5/4	at Army	L	0-9	3/15	vs Northeastern (at Seton Hall)			3/13	vs Lafayette (at Seton Hall)	cancelled	
5/4	at Army	L	4-13			L	4-5 (14)	3/14	at Seton Hall	L	0-7
5/13	at Saint Joseph's	W	13-4	Palm Beach Challenge				3/16-20	Russ Matt Central Florida Invitational		
5/16	at Wright State	L	3-9	3/17	vs Long Island !	L	11-13	3/16	vs UMBC @	L	3-4
5/17	at Wright State	L	3-10	3/19	vs UMBC !	L	0-5	3/17	vs Bradley @	W	4-2
5/18	at Wright State	W	7-6	3/20	vs North Dakota State !	L	3-14	3/19	vs North Dakota State @	L	7-8
5/21	vs NYIT \$	L	3-12	3/21	vs North Dakota State !	L	2-19	3/20	vs Long Island @	L	1-2
5/22	at Texas-Pan American	L	3-5	3/25	LEHIGH	L	1-2 (10)	3/24	at Lehigh	L	0-7
5/23	vs Northern Colorado \$	L	3-8	3/27	MONMOUTH	L	0-13	3/27	at Holy Cross (DH)	L 3-8, L 9-10	
				3/28	MONMOUTH	L	0-9	3/28	at Holy Cross (DH)	L 6-15, L 0-16	
				3/29	at Monmouth	L	3-6	3/31	at Lafayette	W	3-2
				4/1	LAFAYETTE	L	4-8 (7)	4/2	MAINE (DH)	L 1-7, L 4-11	
				4/2	MARIST	L	2-12	4/3	MAINE (DH)	L 1-15, L 2-8	
				Catamount Baseball Classic				4/6	at Siena	ppd	
				4/10	vs Manhattan (at Vermont)	L	2-11	4/7	at Rider	L	3-19
				4/11	at Vermont	L	1-6	4/9	at Houston Baptist*	L	6-7
				4/14	SAINT JOSEPH'S	cancelled		4/10	at Houston Baptist (DH)*	L 3-14, W 7-5	
				4/15	RIDER	W	5-3	4/11	at Houston Baptist*	L	5-14
				4/18	at Hartford	L	9-13	4/16	at Chicago State*	W	14-0
				4/18	at Hartford	W	4-3	4/17	at Chicago State (DH)*	W 9-7, W 8-5	
				4/19	at Hartford	L	4-12	4/18	at Chicago State*	W	9-6
				4/22	SIENA	cancelled		4/21	FAIRLEIGH DICKINSON	L	2-14
				4/25	at Binghamton	L	2-8	4/23	TEXAS-PAN AMERICAN* L	7-8 (13)	
				4/25	at Binghamton	L	1-25	4/24	TEXAS-PAN AMERICAN (DH)*		
				4/26	BINGHAMTON	L	2-8			L 0-10, W 10-9	
				4/26	BINGHAMTON	L	2-4	4/25	TEXAS-PAN AMERICAN*#	cancelled	
				4/29	SAINT JOSEPH'S	W	10-7	4/28	at Saint Peter's	L	5-11
				5/2	at Army	L	4-13	4/30	at NYIT*	L	11-14
				5/2	at Army	L	9-16	5/1	at NYIT (DH)*	L 2-7, W 10-4	
				5/3	at Army	L	0-17	5/2	NYIT*	L	6-15
				5/6	at Wagner	L	2-7	5/5	at Wagner	L	2-8
				5/9	SAINT PETER'S	L	3-9	5/8	NO. COLORADO (DH)*^ L	1-13, L 1-7	
				5/9	SAINT PETER'S	L	1-6	5/9	NO. COLORADO (DH)*^ L	0-10, L 5-14	



Tyler Kapp



Tyler Kapp

## Men's Year-by-Year Results

5/14	at Utah Valley*	L	3-13	4/29	at Northern Colorado*	L	3-7
5/15	at Utah Valley (DH)*	L	1-7, L 7-24	4/30	at Northern Colorado (DH)*	L	4-6, L 0-4
5/16	at Utah Valley*	L	2-23	5/1	at Northern Colorado*	L	2-12(7)
5/20	NORTH DAKOTA*	L	1-10	5/4	at Wagner	ppd	
5/21	NORTH DAKOTA (DH)*	W	4-2, W 8-7	5/6	NYIT*	L	6-7 (10)
5/22	NORTH DAKOTA*	L	2-8	5/7	NYIT (DH)*	W	2-0, W 10-9
5/26-28	Great West Conference Tournament			5/8	at NYIT*	L	6-14
5/26	vs Northern Colorado (at UTPA)			5/13	at North Dakota*	W	12-7
		L	1-9	5/14	at North Dakota (DH)*	W	11-5, L 3-6
5/27	vs NYIT (at UTPA)	L	4-14 (8)	5/15	at North Dakota*	W	11-9
5/28	at Texas-Pan American	L	1-14 (7)	5/19	CHICAGO STATE*	W	6-4
Coach: Brian Callahan				5/20	CHICAGO STATE (DH)*	W	6-1, W 5-4
*-Great West Conference Game				5/21	CHICAGO STATE*	L	8-12
#-Game played at Yogi Berra Stadium in Montclair, NJ				5/24-26	Great West Conference Tournament		
^Game played at Diamond Nation in Flemington, NJ				5/24	vs NYIT !	L	2-3
@ at Winter Haven, FL				5/25	vs Chicago State !	W	5-2
				5/26	vs Houston Baptist !	L	3-17 (7)

Coach: Mike Cole

\*-Great West Conference Game

@ at Fordham ! at North Dakota

## 2011 (20-35)

2/26	at No. Carolina A&T (DH)	L	0-4, L 0-12
2/27	at North Carolina A&T	L	9-13
3/4	vs Fairleigh Dickinson @	W	3-0
3/5	vs Saint Peter's @	W	7-6
3/6	vs Saint Peter's @ (DH)		
3/9	at Rutgers	L	3-13
3/15	MANHATTAN	L	1-8
3/18-20	Strike Out Cancer Tournament		
3/18	vs Stony Brook (at Seton Hall)	L	1-14
3/20	vs Fordham (at Seton Hall)	L	6-7 (11)
3/20	at Seton Hall	L	1-2
3/23	SIENA	cancelled	
3/26	at Lehigh (DH)	L	1-8, L 2-6
3/27	LEHIGH (DH)	L	8-9, L 5-7
3/30	LAFAYETTE	L	1-3 (13)
4/2	HARTFORD (DH)	W	3-2(8), W 7-6 (9)
4/3	at Hartford (DH)	W	4-3, L 8-12
4/6	RIDER	L	4-6
4/8	UTAH VALLEY (DH)*	L	3-5, L 8-9 (14)
4/9	UTAH VALLEY*	L	0-2 (11)
4/10	UTAH VALLEY*	L	3-8 (14)
4/12	IONA	W	12-6 (7)
4/15	at Texas-Pan American*	L	7-14
4/16	at Texas-Pan American (DH)*		
		L	1-10, W 11-5
4/17	at Texas-Pan American*	W	6-5(10)
4/20	FAIRLEIGH DICKINSON	W	5-3
4/22	HOUSTON BAPTIST (DH)*		
		L	0-11, W 3-1
4/23	HOUSTON BAPTIST (DH)*		
		W	3-2 (10), L 2-7
4/27	SAINT PETER'S (DH)	L	4-6, L 5-6

## 2012 (25-27)

2/25	at No. Carolina Central (DH)	L	5-8, W 15-2
2/26	at North Carolina Central	W	17-15
3/2	at Delaware State	L	2-3 (10)
3/4	at Delaware State (DH)	W	18-4, W 4-2
3/10	at Presbyterian (DH)	L	1-6, L 1-7
3/11	at Presbyterian	L	3-4
3/14	at Wake Forest	L	7-12
3/16-18	Strike Out Cancer Tournament		
3/16	vs Maine (at Seton Hall)	L	2-3 (11)
3/18	at Seton Hall	L	0-3
3/23	SAINT PETER'S	W	11-0
3/23	SAINT PETER'S	L	4-5 (10)
3/24	at Saint Peter's	L	2-5
3/28	at Siena	cancelled	
3/30	at Hartford	L	10-11
3/30	at Hartford (DH)	L	2-3
3/31	at Hartford	W	9-6
4/3	at Rider	W	2-1
4/5	NO. COLORADO*	W	7-6
4/6	NO. COLORADO (DH)*	W	8-2, W 11-4
4/7	NO. COLORADO*	L	6-11
4/13	at Houston Baptist*	W	9-1
4/14	at Houston Baptist (DH)*	L	1-6, W 13-1
4/15	at Houston Baptist*	W	10-3
4/20	NORTH DAKOTA (DH)*	W	7-5
4/20	NORTH DAKOTA*	W	5-2
4/21	NORTH DAKOTA (DH)*	W	8-7
4/21	NORTH DAKOTA*	L	3-6



Ed Charlton

4/24	at Fairleigh Dickinson	W	12-5
4/26	at Utah Valley*	L	0-14 (7)
4/27	at Utah Valley (DH)*	L	3-6, L 2-12
4/28	at Utah Valley*	L	7-11
5/1	at Wagner	W	4-3
5/4	TEXAS-PAN AMERICAN*	L	3-5
5/5	TEXAS-PAN AMERICAN (DH)*		
		L	0-1, W 4-3 (18)
5/6	TEXAS-PAN AMERICAN*	L	1-2
5/8	WAGNER	cancelled	
5/11	at Chicago State*	W	9-8
5/12	at Chicago State*	W	13-0 (7)
5/13	at Chicago State*	L	1-2
5/13	at Chicago State*	L	2-12 (7)
5/14	FAIRFIELD	L	4-19
5/17	at NYIT*	W	1-0
5/18	at NYIT (DH)*	W	8-4, W 7-2
5/19	NYIT*	W	11-4
Great West Conference Tournament			
5/22	vs North Dakota @	L	0-1
5/23	vs Chicago State @	L	7-11

Coach: Mike Cole

\*-Great West Conference Game

@ at Utah Valley



2013 (20-34)			5/21-23 Great West Conference Tournament			5/4	UALBANY (DH)	W 5-4 (7), L 5-9 (7)
2/17	at North Carolina Central (DH)		5/21	HOUSTON BAPTIST	L 6-11	5/10	at Maryland Eastern Shore (DH)	
	L 4-11, L 1-5		5/22	NYIT	W 9-6		W 12-0, W 5-2	
2/23	at Oklahoma State	L 1-11 (7)	5/23	NORTHERN COLORADO	L 2-4	5/11	NYIT (DH)	W 5-3, W 5-2
2/23	at Oklahoma State	L 3-6	Coach: Brian Guiliana			5/17	at Niagara (DH)	L 1-3 (7), L 4-5 (9)
2/24	at Oklahoma State	L 2-5	*-Great West Conference Game			5/18	at Niagara (DH)	L 3-4 (10), L 2-7 (7)
3/2	at Coppin State	W 4-3 (11)	Coach: Brian Guiliana					
3/3	at Coppin State (DH)	W 13-2	2014 (20-25)					
3/3	at Coppin State	W 10-1	2/15	at North Carolina Central (DH)	cancelled			
3/9	at Presbyterian	L 1-2 (12)	2/16	at North Carolina Central (DH)	cancelled			
3/10	at Presbyterian (DH)	L 2-3, W 1-0	2/22-23 2014 Al Scott Memorial Baseball Classic					
3/12	at Fairleigh Dickinson	ppd	2/22	vs Central Arkansas (at Abilene Christian)				
3/15-17 Frankie Frisch Invitational				L 7-17				
3/15	at Fordham	L 3-8	2/22	at Abilene Christian	L 1-10			
3/16	vs Saint Peter's (at Fordham)	L 3-5 (7)	2/23	vs Central Arkansas (at Abilene Christian)				
3/17	vs Sacred Heart (at Fordham)	W 6-3		W 7-5				
3/19	at Fairleigh Dickinson	ppd	2/23	at Abilene Christian	L 5-6			
3/20	SIENA	L 8-11	3/1	at Coppin State	W 8-2			
3/23	at Rider (DH)	W 4-3, L 0-5	3/2	at Coppin State (DH)	W 13-3, rained out			
3/24	RIDER	L 2-10	3/8	at Maryland Eastern Shore (DH)	ppd			
3/29	at UMass	L 4-10	3/9	at Maryland Eastern Shore (DH)	ppd			
3/30	at UMass (DH)	L 0-1, W 7-6 (11)	3/14-16 Fairleigh Dickinson Tournament					
4/3	FAIRFIELD	W 10-6	3/14	at Fairleigh Dickinson	L 8-11			
4/5	UTAH VALLEY*	L 1-3	3/15	vs Lehigh (at FDU)	W 4-3			
4/6	UTAH VALLEY (DH)*	L 1-5, W 9-7	3/16	vs Lehigh (at FDU)	L 5-7			
4/7	UTAH VALLEY*	L 2-9	3/20	vs Fairfield (at Fordham)	L 3-10			
4/10	RIDER	L 5-6	3/22	RIDER (DH)	W 2-1, L 5-8			
4/13	NYIT (DH)*	W 6-5 (9), W 6-5	3/23	at Rider	W 5-1 (10)			
4/14	at NYIT (at Dowling) (DH)*		3/25	SAINT PETER'S	L 3-6			
	W 11-1 (7), W 10-4		3/28	at LIU Brooklyn	L 5-6			
4/19	at Northern Colorado*	L 4-7	3/29	at LIU Brooklyn	L 10-11 (8)			
4/20	at Northern Colorado (DH)*		4/1	at Siena	cancelled			
	W 2-1, L 6-16 (7)		4/1	BINGHAMTON	L 0-10			
4/21	at Northern Colorado*	L 5-15	4/5	at NYIT (DH)	W 9-5, W 3-0			
4/26	at Texas-Pan American*	L 2-13 (7)	4/6	at NYIT	W 6-2			
4/27	at Texas-Pan American (DH)*		4/9	at Rider	L 3-13			
	L 7-8, L 2-6		4/12	SACRED HEART (DH)	W 5-3, L 3-6			
4/28	at Texas-Pan American*	cancelled	4/13	at Sacred Heart (at The Ballpark at Harbor				
4/30	WAGNER	L 9-12	Yard) (DH)	L 2-8, L 3-8				
5/3	CHICAGO STATE*	W 5-3	4/15	MANHATTAN	ppd			
5/4	CHICAGO STATE (DH)*	W 2-1, L 7-11	4/18	at Wagner (DH)	W 5-0, L 2-3			
5/5	CHICAGO STATE*	W 4-2	4/19	WAGNER	L 7-9			
5/10	at North Dakota*	L 5-25	4/22	at Saint Peter's	W 5-3(10)			
5/11	at North Dakota (DH)*	W 7-6 (7), L 4-6	4/26	at Fairleigh Dickinson (DH)				
5/12	at North Dakota*	L 2-4		W 9-1(7), L 4-12 (7)				
5/16	HOUSTON BAPTIST (DH)*		4/27	at Fairleigh Dickinson (DH)				
	L 5-7, W 5-3			L 2-3 (7), W 5-2 (7)				
5/17	HOUSTON BAPTIST*	L 2-5	4/30	WAGNER	cancelled			
5/18	HOUSTON BAPTIST*	L 1-15	5/3	UALBANY (DH)	L 1-11 (7), W 5-4 (7)			

# All-Time Roster

(first season: 1949; complete 1951-53, 66-67, 69, 1981 thru 2013)

## —A—

ABONIZIO, Anthony 95  
ACE, Steven 08, 09, 10, 11  
ANDREWS, Chris 92,95  
ASCOLESE, Brian 03,04, 05, 07  
ANDRUCHOWITZ, Adam 98  
AURIN, Keith 99  
AVALLONE, Pat 93,94,95

## —B—

BABER, Sean 96  
BABOULIS, Paul 89,90,91  
BACKMAN, Bill 51,52,53  
BACQUE, Chris 06  
BARROQUERIO, Tony 00  
BASHAW, AJ 12  
BASTAN, Bill 51  
BATISTA, Jose 88,89  
BAUTISTA, James 88  
BECKHORN, Bruce 66  
BERGER, Rodney 96  
BERMUDEZ, Gio 07, 08, 09  
BENJAMIN, Andrew 12 13  
**BENTLEY, Ian 13, 14**  
BERNER, John 08, 09, 10  
BETTIO, Mike 85  
BICKERT, Teddy 10, 11, 13, 14  
BIGLER, Evan 07  
BINKIEWICZ 06, 07, 08, 09  
BIONDO, John 98,99,00  
BISCHOFF, Tom 87,88,89,90  
BLAIR, Ryan 02, 03  
BLEAKLEY, Brian 09, 10, 11, 12  
BLISS, Eric 94,95,96,97  
BOCH, Lou 51  
BOGATCH, Keith 88  
BOLAND, Jack 51  
BOUCK, John 09, 10, 11, 12  
BOUCK, Tom 12, 13, 14  
BROSMAN, Scott 11, 12, 13, 14  
BROWN, Keith 81,82  
BURDI, Kyle 10, 11, 12, 13  
BURGALETA, Mike 07, 08  
BYTHELL, Andy 86

## —C—

CAIOLA, Anthony 09, 10, 11, 12  
CAAMANO, Marcus 01  
CARDONE, Chris 05, 06, 07, 08  
CARLSON, Kurt 52  
CARLUCCI, Matt 03  
CARRERA, Rafeal 95,97,98,99  
CARRUBBA, Tom 93,94,96  
CARTER, Chris 99  
CARUSO, Art 93,94,95,96  
CASTRONOVA, Dom 85  
CATALDO, Mike 89  
**CHARLTON, Ed 12, 13, 14**  
CHANCE, K. 84  
CHANDLER, Peter 96  
CICATELLI, Cole 01,02  
CIESLA, Anthony 99,00  
CIMMET, Brian 07  
COLEMAN, Chris 99,00  
COLEMAN, Jerome 05  
COLEMAN, Jon 00,01  
COLES, Alan 52,53  
COLON, Alberto 87  
CONWAY, Mike 98,99  
CORRIGAN, Jason 97,98  
CORSI, Anthony 08  
COSTELLO, Robert 00  
COUGHLAN, Ed 66  
COUGHLIN, Matt 11, 12, 13, 14  
COURTNEY, Brian 52,53  
CRAIG, Steve 02,03,04  
CZEPIEL, John 91,92,93,94

## —D—

D'AGOSTA, Anthony 03, 04, 05, 06  
D'ALOIA, James 08, 09, 10, 12  
DANCY, Jason 95,96  
DANDREA, Chris 89,90  
DANIELE, Alex 14  
DASILVA, Robert 95  
DAVIS, Tripp 10, 11, 12, 13  
DEBIASSE, M. 81  
DEBOER, Ted 51  
DEJAGER, Joe 02  
DEL ROSSO, Sergio 97  
DEL VECCHIO, Vincent 09, 10, 11

DEMIRO, Dan 94  
DEPOORTERE, M 83  
DEPOORTERE, P.J. 81,83  
DEPOORTERE, T. 81,82,83  
DEROGATIS, Austin 04, 05, 06, 07  
DIAMOND, J. 83  
DIMARTINO, Joe 52,53  
DIUBALDI, Anthony 91,93  
DIVONA, Tony 53  
DOBBELAAR, Hank 66  
DOLLARD, Ron 93,94,95,96  
DROSOS, G. 84  
DRZYMKOWSKI, P. 81  
DUBOIS, Mark 86,87

## —E—

EARLY, Adam 85  
EGGLESTON, Jim 89  
EMMETT, Zach 11, 13, 14  
ENTWISTLE, Mike 83,85

## —F—

FALKIEWICZ, Mark 85,86  
FARINA, Tom 06, 07, 08, 09  
FARTHLING, Anthony 00  
**FASANO, Joe 11, 12, 13**  
FERNICOLA, Anothony 85  
FERRARO, Matt 98,99,00  
FIELD, Charles 51  
FINAN, Mike 91,92  
FIUZA, John 86  
FLORES, Sam 87,88,89  
FLYNN, Brian 69  
FORBES, Rob 03, 04, 05, 06  
FOURRE, Mike 95  
FUNK, Russel 86, 87

## —G—

GADOBA, Brian 97,98  
GAGLIARDO, S. 84  
GAJEWSKI, Ed 52  
GALLAGHER, T. 84  
GALOPPO, Steve 90,91,92,93  
GANN, K. 84  
GARCIA, Omar 92  
GARGANO, Jesse 01,02,03,04



Bryan Haberstroh

GERAGHTY, Pat 14  
GERLACH, Bob 51  
GLYNN, Brian 93,94,95  
GOONAN, Chad 98  
GRAULAU, Mark 88,89  
GRAY, Irv 88  
GRAY, John 10  
GROSVENOR, Tom 90,92

## —H—

**HABERSTROH, Bryan 14**  
HAGBURG, Elliot 07  
**HALIBEJ, Stephan 13, 14**  
HALSTEAD, Don 52, 53  
HAMILTON, Tyler 05, 06, 07, 08  
HANEK, Stan 85, 86  
HANSEN, Eric 02  
HART, Jeffrey 93  
HAUCK, Garrett 06  
HAYES, Dom 08  
HELD, Ryan 01,02,03,04  
HENDERSON, Joe 90, 91  
HERRERA, L. 81, 82

HICKEY, Joe 82  
HILL, Tyrone 90, 91, 92  
HOLMES, G. 84  
HOOK, Keith 86,87,88,89  
HURT, M. 83

—I—

IADAROLA, Ralph 53  
IGLESIAS, Charles 86  
IWANOWSKI, Scott 05

—J—

JACONSKI, Scott 93  
JAILE, Jesus 10  
JENSEN, Harry 51  
JOHNSON, Rich 93,94,95,96  
JORDAN, Kris 99  
JULIAN, Ben 99

—K—

KALWA, Andrew 86,87,89,91  
KAPICA, Dan 05, 06, 07  
**KAPP, Tyler 11, 13, 14**  
KEEFE, Dennis 04, 05  
KELLY, A. 84  
KIELB, Steve 52  
KIEMLE, George 66, 67, 69  
KOSINSKI, Steve 01,02,03,04  
KOWTKO, Greg 92  
**KRAMER, Cody 14**  
KREJSA, Don 51  
KROECK, Don 51,52  
KUZMIK, Cory 05, 06, 07, 08

—L—

LAMBERTY, Frankie 97,98,99,00  
LEGIADRE, Chris 02, 04, 05, 06  
LEITER, Jr., Mark 10, 11, 12, 13  
LEMANOWICZ, Tommy  
98,00,01,02  
LEPORE, Eric 96, 97  
LEPPO, Chuck 05, 06, 07  
LIGEL, Mike 12  
LIVOLSI, Rich 98,99,00,01  
LOBDELL, Pat 87,88,89,90  
LOMBARDI, Tony 86, 87

LOVELY, William 82  
LUDWIG, Matt 91  
LUGO, Miguel 07, 08  
LUPO, Dan 02, 03, 04, 05  
LYONS, Chris 98,99,00,01  
LYONS, Jack 52, 53

—M—

MACDONALD, Dan 8182,83  
**MACMILLIAN, Rex 14**  
MADEL, George 51  
MARGOLIN, T.J. 95,96,97,98  
MARROTA, Matt 08  
MARTINEZ, Hector 88  
MARTUCCI, Justin 00  
MATAYA, Scott 99,00,01,02  
MAVRAKES, Jim 83, 85, 86  
MCAULIFFE, Austin 10, 11,  
12, 13, 14  
MCCAIN, Derrick 04, 05, 06, 07  
MCCARTHY, Kevin 01  
MCCARTHY, Kyle 07, 08, 09, 10  
MCDONALD, Jim 66, 67  
MCDONOUGH, John 66  
MCENTEE, Jeff 86,87,88,89  
MCKEE, Josh 95  
MCGLYNN, Connor 12  
MELODY, Matt 06, 07, 08, 09  
MENDONCA, Steve 97  
MEYER, Jim 83, 85, 86  
MILLER, Conrad 66  
MILLER, Vin 51, 52, 53  
MITCHELL, Kwesi 03, 04, 05, 07  
MOLFETAS, Spiro 07, 08  
MONTESINO, Rafael 91  
MORENO, Dan 09  
MORGAN, Mike 02  
MOROGIELLO, Dan 04, 05, 06, 08  
MOUL, Eric 13  
MULCAHY, M. 81  
MUNSON, Doug 66  
MURRAY, Mike 86

—N—

NALBACH, Pete 98,99,00,01  
NARVAEZ, Andre 00,01,02,03

NAZARIO, Rich 07, 08  
NEGRON, Felipe 93  
NISIVOCIA, Jerry 52,53  
NIZOLAK, Mike 88  
NUNN, David 89,90

—O—

ODONNELL, John 53  
OKITA, Reid 09, 10, 12  
OLOHAN, Rob 00,01,03  
ORDONEZ, William 91,94  
O'ROURKE, Bill 66

—P—

PALOMINO, Mike 02,03,04, 05  
PALUMBO, Jon 04, 05  
PALUMBO, Josh 01,02  
PALUMBO, Paul 88  
PAPP, Rick 97  
PARENTI, Chris 07, 08, 09  
PELLIGRINO, M. 82  
PETERSON, Jeff 10, 11, 12, 13  
PETRONE, Matt 10  
PETROSINO, Ricky 07, 08  
PICINICH, J. 84  
PIETROCOLA, Rob 06, 07, 08  
PILIPSKI, Ian 95  
PIOTO, Tom 85,86  
PINTER, Matt 87,88,90  
PIZZI, Jeff 09, 10, 12  
PLOUSSAS, Robert 00  
POORTERE, John de 94  
POTOCZNIK, Marty 02  
POTTER, Jeff 03,04, 05, 06  
POTTER, Glenn 81,82  
POTTER, T. 82,83  
PORCELLO, Jake 12  
PORCELLO, Zach 03,04, 05  
POWERS, Seth 01,02  
PRAGER, Marc 10  
PRESTANO, John 10, 11  
PRINCE, G. 84  
PRITZLAFF, Ed 81,82  
PRITZLAFF, Phil 81,82  
PRUNEAU, Jeff 81,82,83  
PUGLIA, Joe 82,83

PUENTES, Leon 92  
PURIELLO, John 69

—R—

RABASCO, Nick 13  
RACZ, Justin 03,04, 05, 06  
RACZYNSKI, Dan 01,02,03,04  
RAGAS, Brian 04  
**RAMPONE, Mike 12, 13, 14**  
RENNA, Zach 13, 14  
RESCINTI, Phil 02,03,04,05  
RIVERA, Bill 67  
RIVERA, Hector 90,91  
RIVERA, Pete 05, 06  
ROBERTS, Alan 07  
ROBINSON, Dave 66,67  
ROCHE, DJ 10, 11, 12, 14  
RODRIGUEZ, Dario 81,82  
ROGERS, W. 84  
ROMAY, Roberto 82  
ROONEY, Tim 95  
ROYCROFT, Kevin 95,96,97  
ROZANSKI, Jerry 66,67  
RUSSELL, J. 83  
RYAN, M. 84



Tyler Kapp



# Men's All-Time Roster

(first season: 1949; complete 1951-53, 66-67, 69, 1981 thru 2013)

## —S—

SALERNO, Jeff 09, 10  
 SAMOLOWICZ, J.J. 99, 02  
 SANSIL, Andre 97  
 SANTIAGO, Juan 89  
 SAPORITO, PJ 06, 07, 08, 09  
 SARNOWSKI, Chris 89,90,91,92  
 SARLO, C. 81  
 SARLO, Paul 89,90,91  
 SARULLO, Steve 86  
 SCHAFFER, Jeff 03,04, 05, 06  
 SCHIENI, Steve 66,67  
 SCHLITTER, Matt 06, 07, 08  
 SCHMID, Kevin 86  
 SCHUMM, Richard 51  
 SCHUSTER, Al 66  
 SCHWARTZ, Chris 01,02,03,04  
 SCOTT, Randy 07  
 SCRUPSKI, Steve 52,53  
 SEDITA, Chris 98  
 SEELEY, Sean 92,93  
 SERRANO, Camilo 01  
 SESNY, Keith 92,93  
 SHERROD, Thomas 94  
 SHIVERS, Frankie 10, 11, 13, 14  
 SICA, Jerry 85  
 SIERCHIO, George 90,92  
 SIFONIOS, Mike 86,87,88,89  
 SILVESTRO, Eric 92  
 SIMONE, Anthony 96,97  
 SISTA, Larry 52,53  
 SMALL, Andrew 07  
 SMITH, Bob 66  
 SMITH, Mark 94,95  
 SMITH, Mike 81,82  
 SOFMAN, Steve 83,84,85  
**SONDERGARD, Brian 14**  
 SONNEMA, Jeff 96,97,98,99  
 SPADAFINO, Tom 85,86,87,88  
 STAUFENBERGER, P 83  
 STRAMBACK, George 66,67  
 STEBBINS, Scott 81,82,83  
 STEFFENS, Shawn 98,99  
 STERN, Jake 13



*Ian Bentley*

STOLL, Jim 86  
 STRASHINSKY, Vic 52  
 SUHR, Rich 82  
 SWEET, Charlie 52,53  
 SWIM, Nick 13, 14

## —T—

TARASHUK, Paul 83,85,86  
 TAVAGLIONE, Vincent 03,04  
 TAVAREZ, Kennedy 11  
 TEDESCO, Lou 94  
 TENSFELDT, Jim 81,82,83  
 TESTA, Frank 82,83,85  
 THEILLER, Bob 82  
 TICE, Steve 90,91,92,93  
 TOBEY, Tony 81,82  
 TOMCZYK, Matt 08, 09, 10, 11  
 TURNER, Mike 05, 06, 07, 08

## —U—

URBAN, John 52,53  
 URBINA, Luis 97

## —V—

VanMERBEKE, Bill 12, 13  
 VANRIPER, Thurman 82,85,86  
 VENA, Joe 91  
 VENTUNEAC, Sebastian 98  
 VIRGONA, Joseph 69

## —W—

WALDRON, Tom 66  
 WALSH, Jack 66  
 WARES, Joe 51  
 WEBBER, S. 83  
 WECKERLE, Matt 11, 12, 13, 14  
 WEDEKIND, Don 94,95,96,97  
 WELLS, Rick 87,88,89,90  
 WENDLOWSKI, Ryan 01,02,03,04  
 WILSON, Brian 00  
 WILSON, Shaun 99  
 WLADIKA, Ian 10  
 WOLFF, Russell 92  
 WYRWA, Bobby 07, 08

## —Y—

YADVISH, Jack 66,67  
 YANEZ, Jake 14  
 YBARRA, Rick 92,93,94,96

## —Z—

ZAPOTICZNY, Steve 67  
 ZIEGLER, Bob 66,67

Only second year of playing season listed; i.e.  
 03 = 2002-03 season.

## 2015 Returning players bold

*Corrections welcome — please contact Stephanie Pillari at  
 pillari@njit.edu*

# Hall of Fame

Name	Grad. Year	Contribution	Sport (s)	Years Active	Year of Induction	Name	Grad. Year	Contribution	Sport (s)	Years Active	Year of Induction
BAKUN, Andrew I.	1982	Athlete/Asst. Coach	M-Soccer	1978-81/ 90-91	2005	IRIS, Herb	1951	Benefactor	--	--	2007
BAKUN, Myron	1967	Athlete	M-Soccer	1964-66	1991	KAMINSKY, Nicholas J.	1978	Athlete	Baseball	1975-78	2006
BARTH, Roland E.	1960	Athlete	M-Fencing	1957-59	2009	KASBARIAN, Raymond P.	1966	Founder/Athlete	Judo	1962-66	1989
			M-Soccer	1956-59		KETZNER, Robert Shelby	--	Coach	Rifle	1962-86	1987
BAUDER, Fred "Coach"	--	Coach	M-Basketball	1932-61	1989	KHOWAYLO, Alex	1969	Athlete	M-Soccer	1960-63	1996
BLUM, Raymond E.	1950	Distinguished Alumnus	Speedskating/ Cycling	--	1996	LUBETKIN, Charles "Tudy"	1953	Athlete	M-Basketball/ M-Track	1949-52	1994
						LYNCH, Robert K.	1984	Athlete/Coach	M-Fencing	1977-80/ 86-91	1993
BORJA, Hernan "Chico"	1981	Athlete	M-Soccer	1977-80	1986	MacDONALD, Dan	1984	Athlete	Baseball	1981-84	1992
BORNAKO, Gregory "Egor"	1970	Athlete	M-Fencing	1966-70	1987	OLSEN, Richard J.	1969	Athlete	M-Basketball	1965-69	1988
BOWSER, Hamilton V.	1952	Athlete	M-Fencing	1948-52	1989	OLSON, George R.	1977	Athlete	Baseball	1974-77	1987
BRADLEY, Thomas	1978	Athlete	M-Swimming	1974-78	1990	PAULIUS, Raymond V.	1985	Athlete	M-Soccer	1980-83	2006
BROWN, Andrew D.	1963	Athlete	M-Soccer	1956-59	2006	RODGERS, Tarik	1996	Athlete	M-Volleyball	1992-95	2010
CRIMMINS, David	1952	Athlete	M-Fencing	1948-52	2007	ROGERS, Warren	1988	Athlete	M-Basketball	1983-87	1993
CRUZ, Edward	1963	Athlete	M-Soccer	1959-62	1995	ROMULUS, Rudy	1991	Athlete	M-Volleyball	1988-91	1996
DAWSON, Marilyn E.	1986	Athlete	WVB/WBKB/SB	1982-86	1991	ROSS, Jonathan A.	1956	Athlete	M-Soccer	1953-55	2010
DeNICOLA, Carmine P.	1978	Athlete	Baseball	1975-78	2005	SARLO, Paul A.	1992	Athlete	Baseball	1989-91	2005
DeNURE, Dave	--	Coach	M-Volleyball W-Volleyball W-Basketball	1982-98 1986-90 1987-88	2009	SCHMID, John "Gene"	--	Asst Coach/Coach	Baseball	1968-72/ 73-97	2002
DeVITO, Louis	1960	Athlete	M-Soccer/ M-Fencing	1956-60	1992	SIMON, J. Malcolm	--	Coach	M-Soccer	1955-83	1994
								Director of Athletics	--	1983-94	
DIAS, Joe A.	1977	Athlete	M-Soccer	1973-76	1993	SKURLA, Peter J.	1941	Athlete	Bowling	1937-41	1992
DRURY, Eugene M.	1963	Athlete	M-Tennis	1960-63	1988	SORIANO, Gregory	1975	Athlete	M-Fencing	1968-72	2010
ENG, Katherine	1993	Athlete	W-Volleyball	1989-92	2007	SWANSON, Robert F.	--	Director of Athletics	--	1947-82	1986
ETIENNE, Yves	1979	Athlete	M-Volleyball	1976-78	1990	TAETZSCH, Robert	1952	Athlete	M-Fencing	1948-52	2007
FEHN, Gilbert F.	1940	Athlete	M-Basketball/ M-Tennis	1936-40	1992	TAETZSCH, William	1952	Athlete	M-Fencing	1948-52	2007
FITZGERALD, Joseph M.	--	Coach/Asst. Coach	M-Basketball	1961-66/ 52-61	1986	TOSATO, Lawrence P.	1956	Athlete	M-Basketball/ Baseball	1952-56	1987
FLEISHER, Seymour "Zoom"	1951	Athlete	M-Basketball	1947-51	1992	TUBELLO, Jeffrey	1976	Athlete	Rifle	1972-76	1988
GAGLIARDO, Salvatore A.	1985	Athlete	M-Basketball	1981-85	1995	VAN WRIGHT, Nevea	1997	Athlete	W-Basketball	1991-96	2005
GALLAGHER, Thomas G.	1985	Athlete	M-Basketball	1981-85	1991	WALSH, John J.	1966	Athlete	MSoc/MBKB/ Baseball	1962-66	1986
GIOVANNOLI, Arnold L.	1953	Athlete	M-Basketball	1950-53	1993	WASNIEWSKI, Frank	1980	Athlete	M-Tennis	1977-80	1990
GOLDRICK PITT, Elizabeth M.	1990	Athlete	W-Volleyball/ Softball/WBKB/WTen	1985-90	1995	WELGOS, Bob	1962	Athlete	M-Basketball/ Bowling	1959-62	2005
GRAZIANO, Jean M.	1989	Athlete	Softball	1986-89	2009	WOROBEC, Myron S.	1966	Athlete	M-Soccer	1962-65	1994
GRUENEWALD, Wendy A.	1997	Athlete	WBKB/Softball/ W-Volleyball/W-Soccer	1992-96	2003	YONEZUKA, Yoshishada	--	Founder/Coach	Judo	1962-?	1991
HAASE, Jay W.	1975	Athlete	M-Fencing	1971-75	1988	ZORN, Werner	1962	Athlete	M-Soccer	1958-61	1988
HAMMOND, Kenneth W.	1979	Athlete	M-Soccer	1974-77	2003						
HANDWERKER, Andy	1963	Athlete	M-Soccer	1959-62	2002	<b>Teams</b>	<b>Year</b>	<b>Accomplishments</b>		<b>Year of Induction</b>	
HAUSSER, Paul C.	--	Administrator Coach	-- Fencing/Baseball	1953-91 1954-88/53-72	1990	Men's Soccer	1960	NAIA co-National Champion		1988	
HUBEY, Ali	1972	Athlete	M-Soccer	1968-71	1990	Men's Basketball	1981-82	NJIT's first ECAC and IAC champion		1990	
HURTADO, Fabian	1975	Athlete	M-Soccer	1970-74	1987	Baseball	1982	NJIT's second ECAC and IAC champion		1993	

# Directions

## FOR GPS USERS

The address for Lubetkin Field at Mal Simon Stadium, the Estelle and Zoom Fleisher Athletic Center, and the Naimoli Family Athletic and Recreational Facility is 80 Lock Street, Newark, NJ, 07102.

## BY CAR

**New Jersey Turnpike: Driving North from South Jersey:** Take NJ Turnpike to Exit 13A Newark Airport. After toll stay to left and follow signs to Rt. 1 & 9 North. You will merge onto Rt. 1 & 9 North. Airport will be on right. Follow signs for downtown Newark and Rt. 21 North-(left lane exit ramp). Downtown Newark will be in front of you. NYC will be off to your right. Follow Rt. 21 North (McCarter Highway). Turn left on Raymond Blvd. Follow Raymond Blvd. past Warren Street traffic light and Fleisher Athletic Center, Naimoli Center, and Lubetkin Field at Mal Simon Stadium will be to your right (one soccer goal line runs along Warren Street and the soccer sideline parallels Lock Street).

**New Jersey Turnpike: Driving South from North Jersey:** Take exit 15W to Route 280 West, then follow Route 280 West directions.

**Route 280 West:** After drawbridge, take Exit 15A (Rt. 21 South - McCarter Highway). Follow Rt. 21 South to Raymond Blvd. Turn right on Raymond Blvd. Follow Raymond Blvd. past Warren Street traffic light and Fleisher Athletic Center, Naimoli Center, and Lubetkin Field at Mal Simon Stadium will be to your right (one soccer goal line runs along Warren Street and the soccer sideline parallels Lock Street).

**Route 280 East:** Take Exit 15 (Rt. 21 South - McCarter Highway). Follow Rt. 21 South to Raymond Blvd. Turn right on Raymond Blvd. Follow Raymond Blvd. past Warren Street traffic light and Fleisher Athletic Center, Naimoli Center, and Lubetkin Field at Mal Simon Stadium will be to your right (one soccer goal line runs along Warren Street and the soccer sideline parallels Lock Street).

**Garden State Parkway (North & South bound):** Take exit 145 to Route 280 East, then follow Route 280 East directions.

**Route 1 & 9 North & South:** Take exit marked Newark, Rt. 21 North (McCarter Highway). Follow Rt. 21 North (McCarter Highway). Turn left on Raymond Blvd. Follow Raymond Blvd. past Warren Street traffic light and Fleisher Athletic Center, Naimoli Center, and Lubetkin Field at Mal Simon Stadium will be to your right (one soccer goal line runs along Warren Street and the soccer sideline parallels Lock Street).

**Route 78 East:** Take Route 78 East to Rt. 21 North. Turn left on Raymond Blvd. Follow Raymond Blvd. past Warren Street traffic light and Fleisher Athletic Center, Naimoli Center, and Lubetkin Field at Mal Simon Stadium will be to your right (one soccer goal line runs along Warren Street and the soccer sideline parallels Lock Street).

**Route 22 East:** Take Route 22 East to Route 21 North. Turn left on Raymond Blvd. Follow Raymond Blvd. past Warren Street traffic light and Fleisher Athletic Center, Naimoli Center, and Lubetkin Field at Mal Simon Stadium will be to your right (one soccer goal line runs along



Warren Street and the soccer sideline parallels Lock Street).

**Route 21 North:** Follow Rt. 21 North to Raymond Blvd. Turn left onto Raymond Blvd. Follow Raymond Blvd. past Warren Street traffic light and Fleisher Athletic Center, Naimoli Center, and Lubetkin Field at Mal Simon Stadium will be to your right (one soccer goal line runs along Warren Street and the soccer sideline parallels Lock Street).

**Route 21 South:** Follow Rt. 21 South (McCarter Highway) to Raymond Blvd. Turn Right on Raymond Blvd. Follow Raymond Blvd. past Warren Street traffic light and Fleisher Athletic Center, Naimoli Center, and Lubetkin Field at Mal Simon Stadium will be to your right (one soccer goal line runs along Warren Street and the soccer sideline parallels Lock Street).

**New York Thruway:** Thruway to Exit 14A, Garden State Parkway. Follow Garden State Parkway directions above.

**George Washington Bridge:** NJ Turnpike South to Exit 15W. Follow Route 280 West directions above.

**Lincoln Tunnel:** West on Rt. 3 to Rt. 21 South. Turn right onto Raymond Blvd. Follow Raymond Blvd. past Warren Street traffic light and Fleisher Athletic Center, Naimoli Center, and Lubetkin Field at Mal Simon Stadium will be to your right (one soccer goal line runs along Warren Street and the soccer sideline parallels Lock Street).

**From Brooklyn, Queens and Long Island:** Take Verrazano-Narrows Bridge (Interstate 278) and follow 278 across Staten Island. Cross Goethels Bridge. Follow signs to New Jersey Turnpike North then follow New Jersey Turnpike directions above.

## PARKING

**Bus/Van Parking:** Visiting buses and vans may usually park on Lock Street adjacent to the athletic center. Please be careful not to block the parking space reserved for the doctor.

**Visitor Parking:** Visitor parking may be reserved in advance through your host. Otherwise, visitor parking at NJIT is available in the NJIT parking deck. Turn right onto Warren Street. Turn right onto Colden Street and proceed around the block to Summit Street. Parking Deck entrance is located to your right before the intersection with Warren Street.

**Parking for on-campus athletic contests:** NJIT is offering free off-street parking for fans attending regular season home soccer and volleyball matches and basketball games. The parking entrance, marked by a yellow sign is located on New Street.

## OTHER TRANSPORTATION SYSTEMS

**Newark Liberty International Airport:** Minutes from the NJIT campus. A minibus (Newark Airlink) or taxi service connects the airport with Penn Station in Newark. Bus, Newark Light Rail, and taxi connections are available at the station.

**Newark Penn Station:** Located in downtown Newark, connections to the NJIT campus may be made by bus, Newark Light Rail, or taxi.

**Morris & Essex Broad Street Station:** A five-block walk to the NJIT campus via MLK Boulevard to Central Avenue. Taxi service is also available.

**Newark Light Rail:** From Penn Station in Newark, take the Warren Street stop for the NJIT campus. The Warren Street stop is on the sidewalk behind the press box for Lubetkin Field at J. Malcolm Simon Stadium.

## HOTELS DOWNTOWN

### Hilton Newark Gateway

Gateway Center, Raymond Boulevard & McCarter Highway  
Newark, NJ, 973/622-5000

### Robert Treat Hotel

50 Park Place, Newark, NJ, 973/622-1900

### Hampton Inn & Suites Newark Riverwalk

100 Passaic Ave, Harrison, NJ, 973/483-1900

## NEAR NEWARK LIBERTY INTERNATIONAL AIRPORT

### Best Western Newark Airport West

101 International Way, Newark, NJ, 973/621-6200

### Hilton Newark Airport

1170 Spring Street, Elizabeth, NJ, 908/351-3900

### Holiday Inn Newark Liberty International Airport

160 Frontage Road, Newark, NJ, 973/589-1000





### 2015 Highlanders Baseball

Back Row (l-r): Head Coach Brian Guilianna, Assistant Coach Robbie McClellan, Stephan Halibej, Joe Fasano, John Gallo, Tyler Kapp, James Sofield, Brent Jones, Andres Fernandez, Brian Sondergard, Volunteer Coach Craig Anderson, Assistant Coach Grant Neary

Middle Row (l-r): John Saviano, Mike Rampone, Johnny Malatesta, Ed Charlton, Brady Hall, Tommy Derer, Cody Kramer, Bryan Haberstroh, Manuel Gonzalez, Sean Lubreski

Sitting Rowing (l-r): Matt Yuhas, Evan Pietronico, Jesse Uttendorfer, Ian Bentley, Brandon Pilovsky, Justin Chin, Matt McKinnon, Edgar Badaraco, Matt Stalter, Rex MacMillan

## 2015 HIGHLANDERS BASEBALL

### FEBRUARY

Sat.-Sun.	14-15	at George Washington	12pm(DH)/12pm(DH)
Sat.-Sun.	21-22	at Longwood	3:30pm(DH)/1pm
Fri.-Sun.	27-1	at UNC-Ashville	3pm/1pm(DH)/12pm

### MARCH

Sat.-Sun.	7-8	at Delaware State (DH)	12pm/12pm
Sat.-Sun.	14-15	at Towson (DH)	1pm(DH)/1pm(DH)
Tue.	17	at UMBC	1pm
Sat.-Sun.	21-22	<b>NIAGARA</b>	<b>12pm (DH)/12pm(DH)</b>
Fri.-Sun.	27-29	<b>LIU BROOKLYN</b>	<b>6pm/12pm (DH)/12pm</b>
Tue.	31	at Saint Peter's	3:30pm

### APRIL

Fri.	3	<b>NYIT</b>	<b>6pm</b>
Sat.	4	at NYIT	12pm (DH)
Tue.	7	<b>FAIRFIELD</b>	<b>6pm</b>
Wed.	8	<b>RIDER</b>	<b>6pm</b>
Sat.-Sun.	11-12	at UAlbany	12pm (DH)/12pm(DH)
Fri.	17	<b>WAGNER</b>	<b>6pm</b>
Sat.	18	at Wagner	1pm
Sun.	19	<b>WAGNER</b>	<b>1pm</b>
Tue.	21	<b>SIENA</b>	<b>6pm</b>
Sat.	25	at Fairleigh Dickinson	12pm (DH)
Sun.	26	<b>FAIRLEIGH DICKINSON</b>	<b>1pm (DH)</b>
Tue.	28	<b>SAINT PETER'S</b>	<b>6pm</b>

### MAY

Sat.	2	<b>LAFAYETTE</b>	<b>12pm (DH)</b>
Sun.	3	at Lafayette	1pm
Sat.-Sun.	9-10	<b>MANHATTAN (Senior Day)</b>	<b>12pm (DH)/12pm (DH)</b>
Fri.-Sat.	15-16	at Quinnipiac	12pm(DH)/12pm(DH)

Head Coach: Brian Guiliana (George Washington '96), third season  
 Assistant Coach: Robbie McClellan (Northern Arizona '11), Grant Neary  
 Volunteer Coach: Craig Anderson  
 CAPS/Bold = Home games at Bears and Eagles Riverfront Stadium