

PERSPECTIVE OF THE NEWARK CITY HALL.

Central Office in this Building Installed by Gamewell Fire Alarm Telegraph Co.

John H. and Wilson C. Ely, Architects.

THE NEWARK CITY HALL.

JOHN H. & WILSON C. ELY, Architects.

THE City Hall is a much larger building than the Court House previously described and so different in its nature as to make comparisons useless.

The exterior is of gray granite. Massive square towers emphasize the corners with the façade at the main approach standing out in line with these. A broad flight of steps, flanked on either side by pillars bearing ornate bronze electroliers, leads up to the main doorway.

On entering, a vestibule of great beauty presents itself. White marble flanks the walls to the ceiling, a mosaic design on a gold ground. Passing on we come to the great rotunda, fifty feet or more in width and rising to the central dome of the roof.

The circle of the rotunda is broken by four arches which extend to the dome. These are interrupted at the level of the second and fourth stories by the cornices of the orders which terminate at these levels. The order of the first story consists of paired Tuscan columns of Breccia marble with the broad pier bases between flanked with gray veined marble heavily rusticated.

Opposite the main entrance is the grand staircase which sweeps in double flight to the second floor. The carved and polished marbles contrast in tone while the four electroliers designed after Greek tripod lamps set out the design.

Above the second story rises a two-story order of Corinthian conception. The concave pier faces are treated in panel with a sub-order of ornate design. Surmounting the arches before mentioned is the great dome which, with its four pendentives, is decoratively

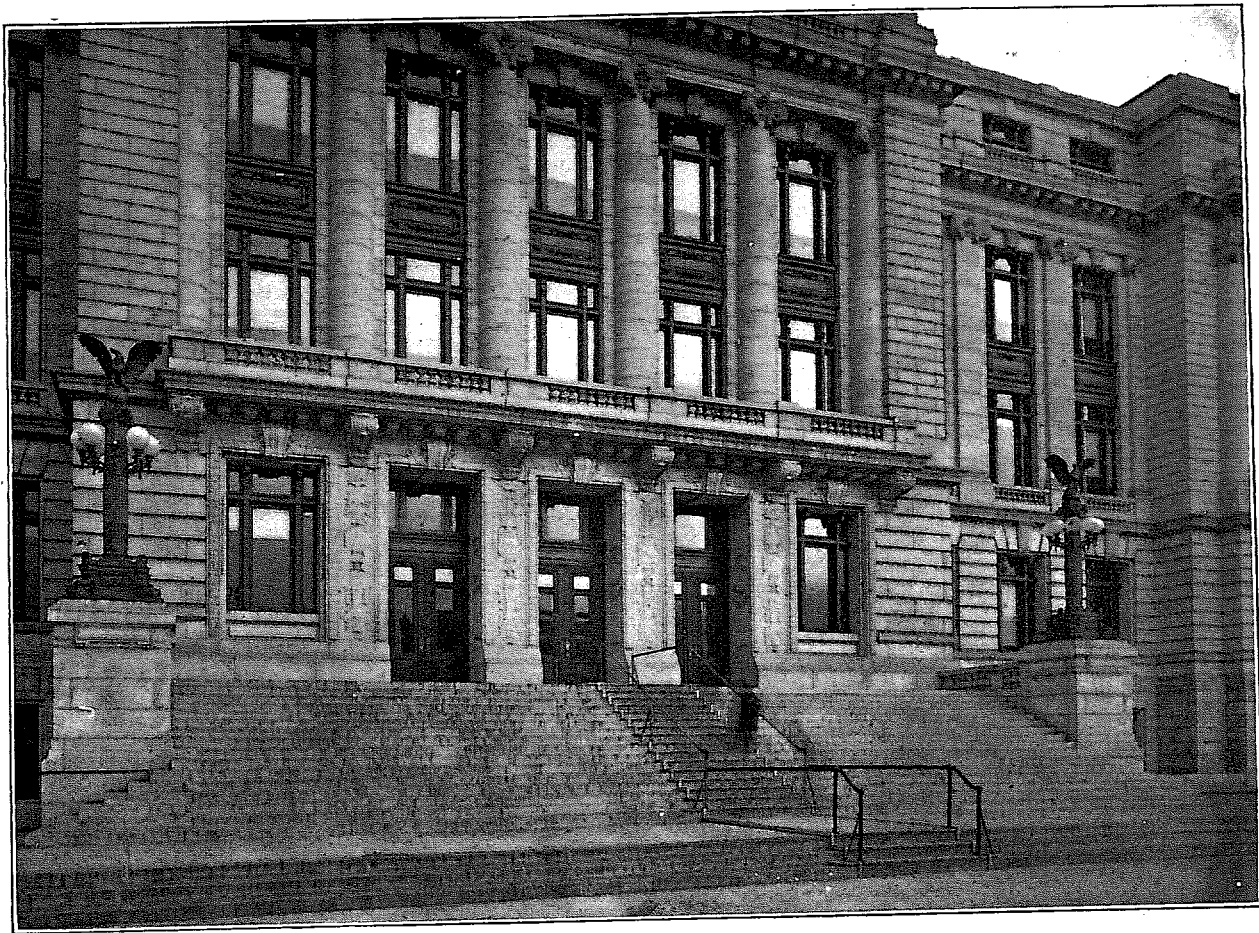
treated as one theme. This dome bears out the late French Renaissance motive of the whole design. Its richly embossed plastering is solidly covered with gold leaf, while the central window of golden glass is designed in keeping.

Flanking the rotunda on either side are two long courts which extend to the roof.

These are plainly finished with two-story pilasters crowned with Corinthian capitals paralleling the secondary order of the rotunda. The top story consists of a series of arches with pendentives, bearing ornate cartouches in white and gold, between. An oblong skylight of leaded glass admits light to the interior. A peculiar construction in these courts is the bridge across them at the first floor level. This is an artifice to admit light and air to the basement below.

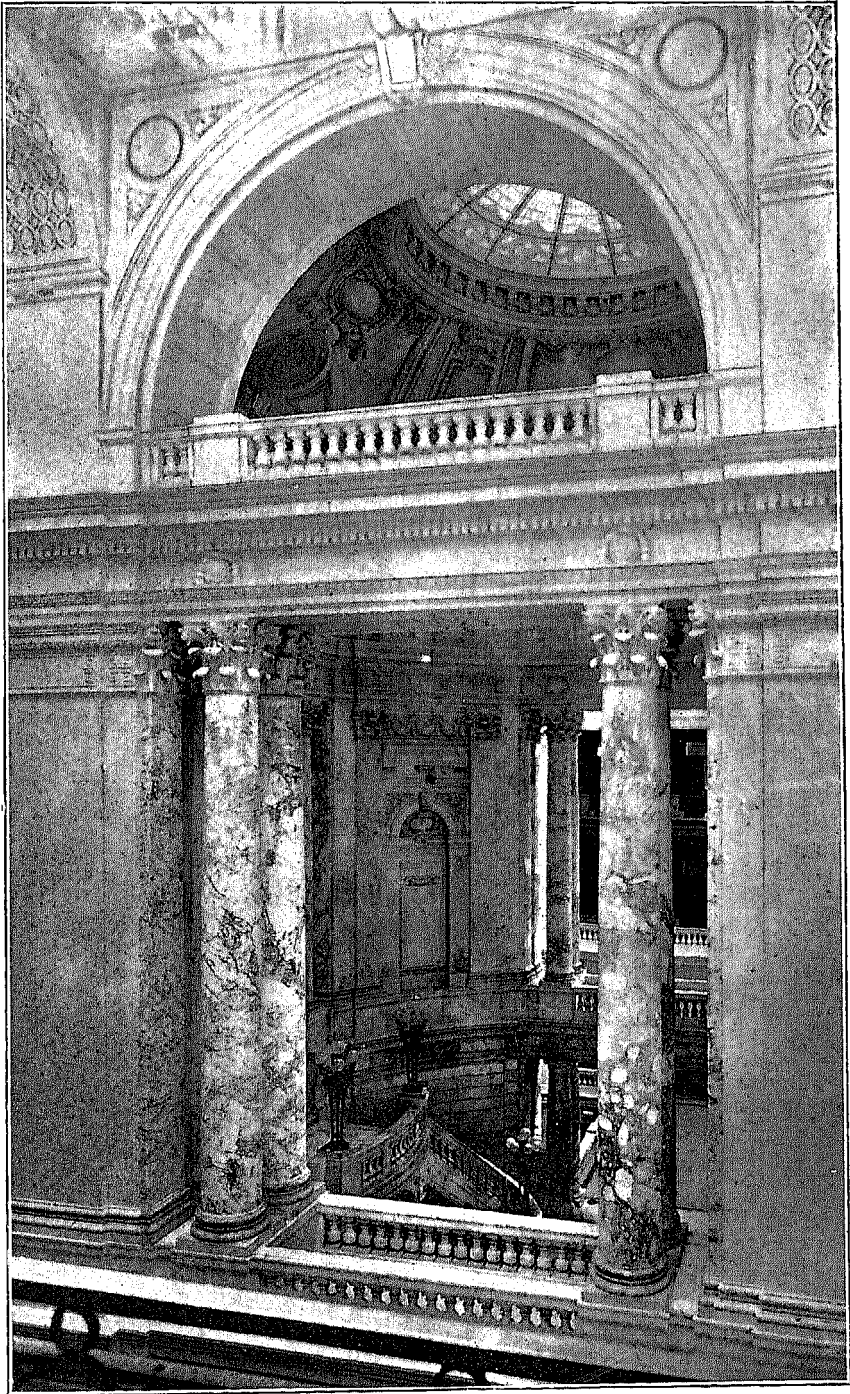
This arrangement of rotunda and courts gives the building a hollow oblong plan about which, on the interior, galleries run, which give access to all the offices. There are four floors and basement in all. These are connected by four elevators and four flights of stairs which run up in the piers of the dome. The arrangement is most convenient, as the traffic is distributed on the first floor and much walking in the upper corridors avoided. Another elevator is provided in the southwest corner for special service.

The Mayor's office is located on the second floor immediately above the entrance. This is furnished in mahogany, with deep red hangings and carpet. The decoration is plain, giving the room a business-like substantiality. The lighting, well diffused and efficient, is pro-

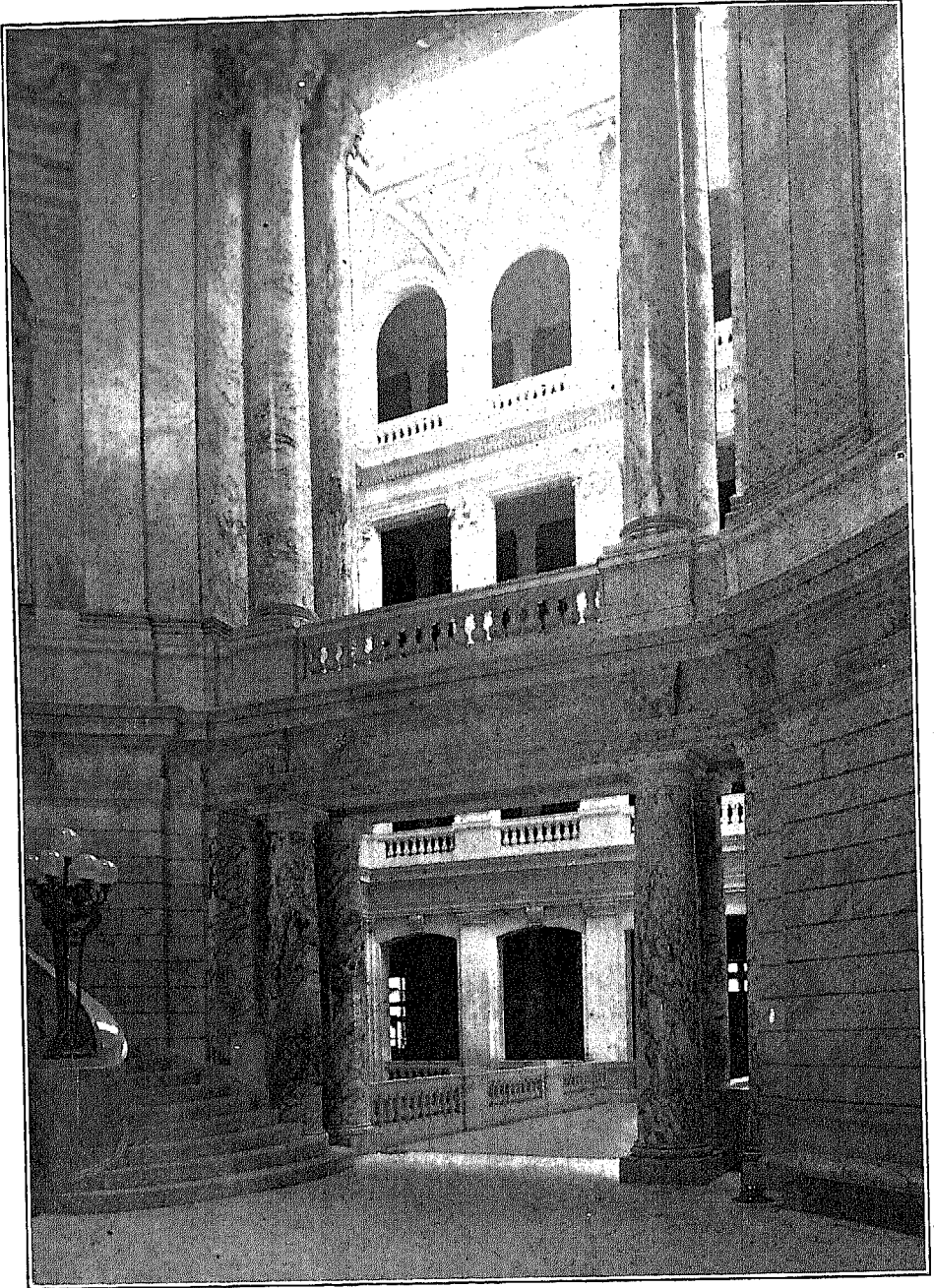


THE APPROACH AND ENTRANCE TO THE CITY HALL.

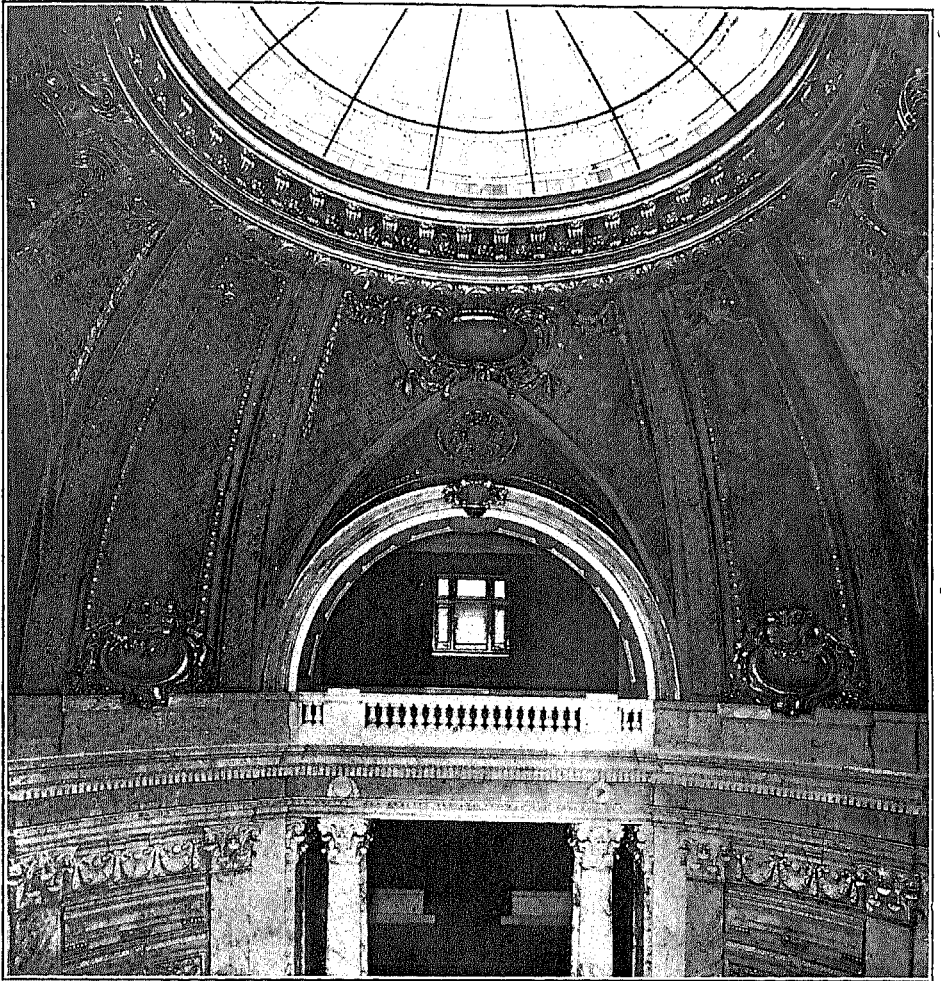
Electric Fixtures: The Browe Company.



LOOKING ACROSS ONE COURT INTO THE ROTUNDA AND THE COURT BEYOND.



LOOKING FROM THE ROTUNDA INTO THE COURT BEYOND.



THE GOLDEN DOME OF THE ROTUNDA.

All decorations: H. Shulz & Son Co.

duced by a row of electric lights running about the ceiling of the room. This system is employed throughout the building.

An outline of the office room afforded may be interesting. The basement contains the head station of the Police Force, the Chief's office, Detective Bureau and office of the Superintendent of Streets, as well as the First and Second District Courts.

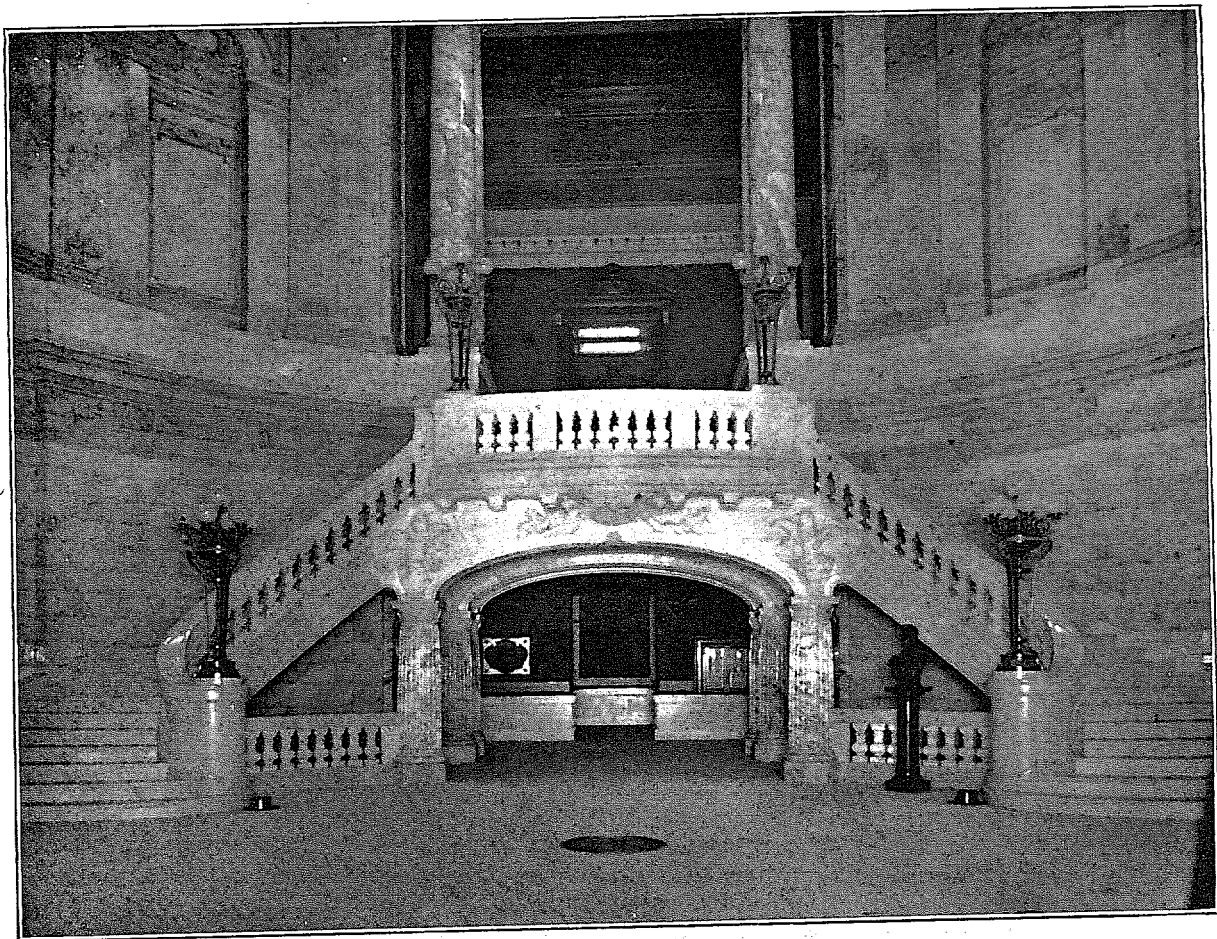
The first floor accommodates the Board of Assessment and Tax Revision,

Department of Water, Controller's, Treasurer's and Auditor's offices.

On the second floor are found the offices of the Mayor, the City Attorney, Police Commissioners, Common Council, Street and Water Commissioners and City Clerk.

The Board of Education occupies a large part of the third floor, with many smaller offices for special Boards, Commissioners, etc.

The Chief of the Fire Department occupies commodious quarters on the



THE GRAND STAIRCASE IN THE ROTUNDA.

Lighting Fixtures: The Browe Co.

fourth floor. Here is being installed the new Gamewell fire alarm system which is said to be one of the finest of its size in the country. It will cost, when completed, over \$50,000.

In thus briefly describing this building there are many points necessarily omitted. However, some inherent structural features may not be overlooked. The large amount of space devoted to interior courts tends to equalize the temperature both in winter and summer. The natural ventilation is excellent, as the rooms all face the street on one side and the interior court on the other.

The acoustic properties in the rotunda and courts are noticeably perfect. A

person speaking in an ordinary tone of voice may be heard distinctly throughout the rotunda.

Among the principal contractors on the City Hall was the firm of H. Shulz & Son Co., who won the job in competition on the merits of their designs. The dome and the ceiling of the foyer, previously described, attract especial attention.

The electric lighting fixtures, especially the two exterior standards, are very attractive and were installed by the Browe Co. of Newark. The bronze for these was cast by Jno. Williams, Inc., of New York.



BRONZE LIGHT STANDARD—CITY HALL ENTRANCE.
Bronze Cast by Jno. Williams, Inc.