



## B'Nai Jeshurun Temple, Newark, N. J.

ALBERT S. GOTTLIEB, ARCHITECT.

THE B'Nai Jeshurun Temple is placed on a plot approximately 100 by 225 feet, the narrow frontage being on High street and the long one on Waverly avenue, with an alley at the rear leading to Quitman street. The building sets back 25 feet on High street, but occupies the remainder of the plot. It faces east with the altar at the west end and the organ in a gallery at the east end.

The structure comprises the auditorium proper and the religious school building adjoining. The auditorium seats 1,600 people — 1,250 on the main floor and 350 in the galleries. The main entrance is from High street through three large doors leading to a main vestibule. Two smaller entrances are on Waverly avenue. There are six large openings for memorial windows, three on the Waverly avenue side and three on the opposite side of the auditorium. In the basement beneath the vestibule end are retiring rooms, lavatories, and coat rooms for men and women. Adjoining the altar are the trustee's room and a study for the rabbi.

To the west of the temple

and connected with it is the religious school building on Waverly avenue of three stories and a basement. It contains twelve class rooms for thirty pupils each, teachers' room, exhibition room, library, ladies' meeting room, and an assembly hall seating 380 people, and equipped with a stage and two dressing rooms at one end. In the basement of the school building are the coat rooms and

lavatories for boys and for girls, as well as a small kitchen and superintendent's office. The rear of the basement contains the heating and ventilating plant. The latter has been made a subject of special study. Fresh air is supplied to the temple auditorium through a series of ducts under the floor and withdrawn through a large duct around the base of the dome. The air passes over air washers before entering the building. All the air in the auditorium can be renewed four times in an hour. A vacuum cleaner is also installed.

The base courses and steps on the exterior are of stone. The walls are faced with light brown brick of rough texture with terra cotta trimmings of



View showing School Building



the same color. All copings are Indiana limestone, and the dome and sloping roofs are covered with gray-green terra cotta tiles, the whole making a restful color scheme.

The interior walls, arches, and dome of the temple are covered with acoustic tile. The architectural ornamentation is in terra cotta of a soft brown color, and all woodwork is of a similar tone to accord with the tone of the tile which is the dominating material. The ark on the altar is of Tavernelle marble, and a red Italian marble is used for the base around the auditorium. The floors of aisles and altar are of cork tile.

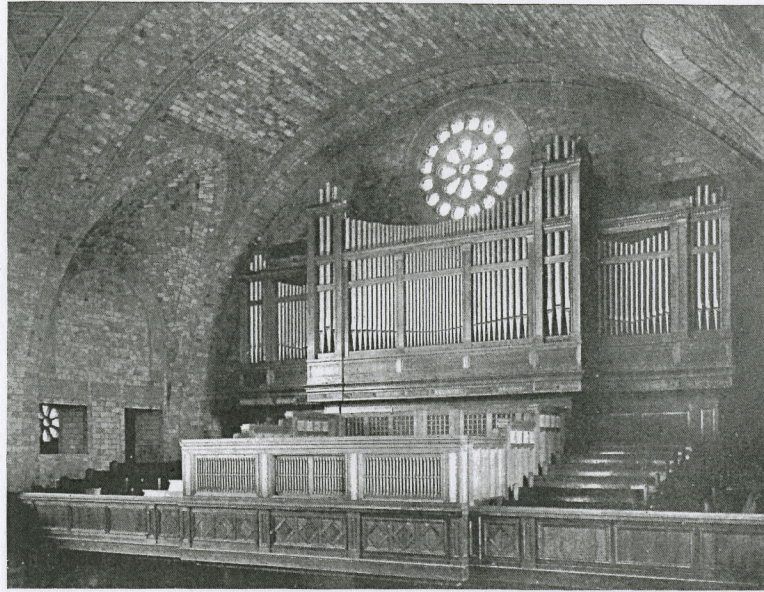
Special consideration was given to the question of acoustics and the plans were submitted at an early stage to Professor Wallace C. Sabine, who has given the study of acoustics much attention and who advised the use of acoustic tile for the walls of the auditorium. The result is most satisfactory. A speaker using a normal tone of voice can be distinctly heard in any

part of the auditorium and without any trace of an echo or reverberation.

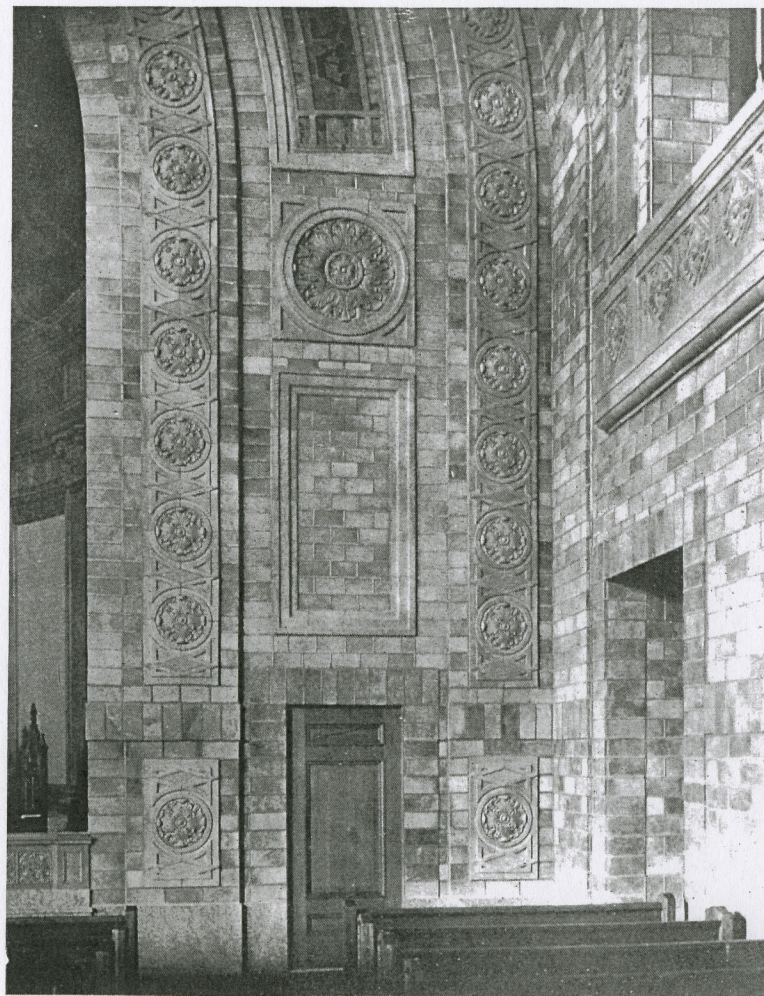
The lighting is by electricity with indirect or concealed fixtures. The main portion of the auditorium is illuminated by powerful lamps and reflectors in a six pointed, star shaped fixture suspended from the center of the dome.

The entire building is fireproof; furthermore, each floor of the school building is supplied with a standpipe and fire hose. It is said that the insurance rate is the lowest on any religious building in the country, it being about nine cents per hundred.

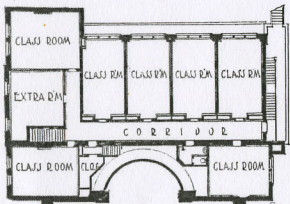
The cost of the structure including all furnishings, except those of the school building, was about \$275,000. The entire group contains about 1,000,000 cubic feet. The height from the sidewalk to the top of the dome is 95 feet, and through a well developed scale, evident in both façades, the building admirably fits its site. It is an interesting expression of synagogue architecture.



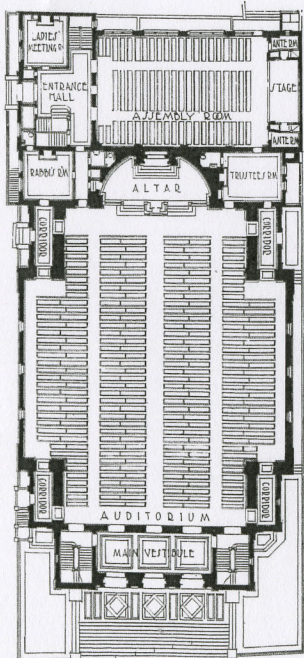
View showing Organ and Gallery at East End



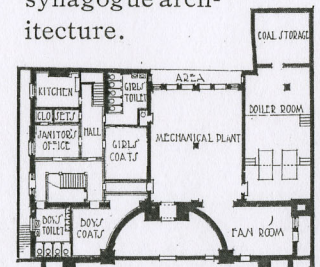
Detail of Interior Wall at West End



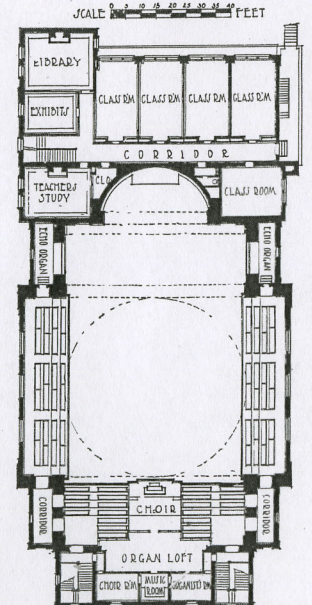
Third Floor Plan



Main Floor Plan

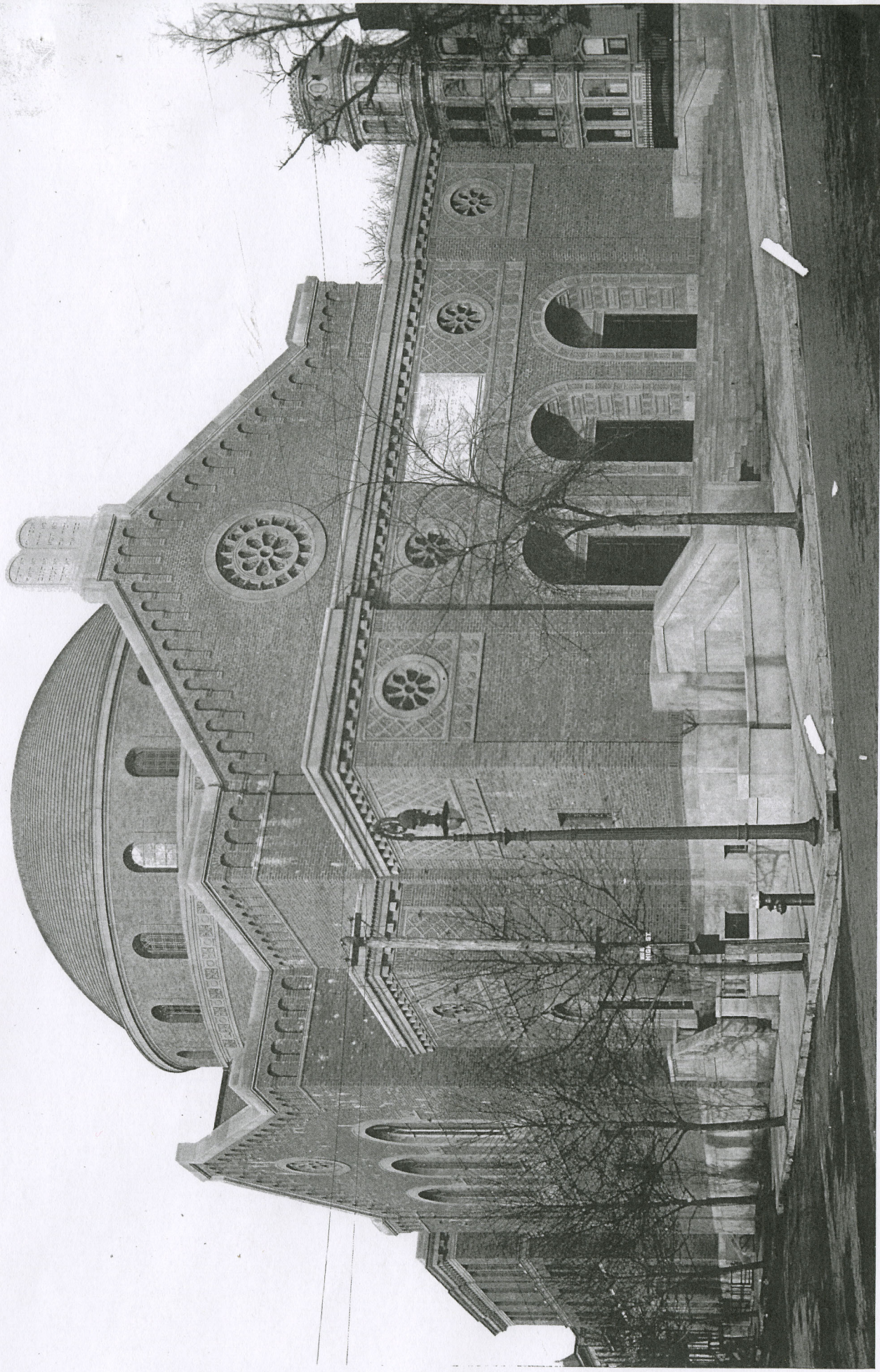


Basement Floor Plan



Gallery Floor Plan





B'NAI JESHURUN TEMPLE, NEWARK, N. J.  
ALBERT S. GOTTLIEB, ARCHITECT.





INTERIOR VIEW LOOKING TOWARD ALTAR

B'NAI JESHURUN TEMPLE, NEWARK, N. J.

ALBERT S. GOTTLIEB, ARCHITECT